

Data Path : Z:\pestpcbsrv\HPCHEM1\ECD_L\Data\PL051923\
 Data File : PL082827.D
 Signal(s) : Signal #1: ECD1A.ch Signal #2: ECD2B.ch
 Acq On : 19 May 2023 18:34
 Operator : AR\AJ
 Sample : PSTDCCC050
 Misc :
 ALS Vial : 4 Sample Multiplier: 1

Instrument :
 ECD_L
 ClientSampleId :
 PSTDCCC050

Integration File signal 1: autoint1.e
 Integration File signal 2: autoint2.e
 Quant Time: May 20 05:02:17 2023
 Quant Method : Z:\pestpcbsrv\HPCHEM1\ECD_L\methods\PL051923.M
 Quant Title : GC Extractables
 QLast Update : Sat May 20 04:58:53 2023
 Response via : Initial Calibration
 Integrator: ChemStation

Volume Inj. : 1 µl
 Signal #1 Phase : ZB-MR2 Signal #2 Phase: ZB-MR1
 Signal #1 Info : 30M x 0.32mm x0.2 Signal #2 Info : 30M x 0.32mm x0.5µm

Compound	RT#1	RT#2	Resp#1	Resp#2	ng/ml	ng/ml

System Monitoring Compounds						
1) SA Tetrachlo...	3.317	2.638	153.6E6	135.7E6	52.277	52.280
28) SA Decachlor...	8.732	7.744	103.8E6	125.0E6	49.506	50.289
Target Compounds						
2) A alpha-BHC	3.766	3.135	236.8E6	201.3E6	53.339	53.957
3) MA gamma-BHC...	4.094	3.461	219.4E6	182.0E6	52.967	54.588
4) MA Heptachlor	4.672	3.793	204.5E6	194.5E6	53.492	53.118
5) MB Aldrin	5.008	4.069	187.4E6	173.9E6	53.271	53.447
6) B beta-BHC	4.298	3.762	93254171	75123234	49.531	52.531
7) B delta-BHC	4.539	3.987	196.6E6	177.1E6	57.174	54.063
8) B Heptachlo...	5.434	4.570	169.7E6	157.5E6	53.050	53.056
9) A Endosulfan I	5.815	4.937	159.1E6	146.6E6	53.038	52.480
10) B gamma-Chl...	5.689	4.818	178.3E6	158.3E6	56.135	52.692
11) B alpha-Chl...	5.767	4.881	169.6E6	158.4E6	52.861	52.758
12) B 4,4'-DDE	5.946	5.072	144.0E6	135.6E6	52.230	55.838
13) MA Dieldrin	6.089	5.201	156.8E6	150.2E6	52.127	53.201
14) MA Endrin	6.316	5.475	138.4E6	135.6E6	51.502	53.434
15) B Endosulfa...	6.539	5.771	129.3E6	124.2E6	48.806	50.180
16) A 4,4'-DDD	6.461	5.626	115.0E6	103.7E6	52.934	53.938
17) MA 4,4'-DDT	6.772	5.874	126.9E6	118.1E6	50.685	52.949
18) B Endrin al...	6.669	5.951	101.4E6	100.9E6	50.453	51.030
19) B Endosulfa...	6.903	6.174	131.9E6	127.3E6	51.434	51.994
20) A Methoxychlor	7.253	6.453	67247916	65993536	50.854	51.892
21) B Endrin ke...	7.383	6.678	132.7E6	141.7E6	52.034	52.415
22) Mirex	7.846	6.849	103.5E6	121.9E6	49.402	52.098

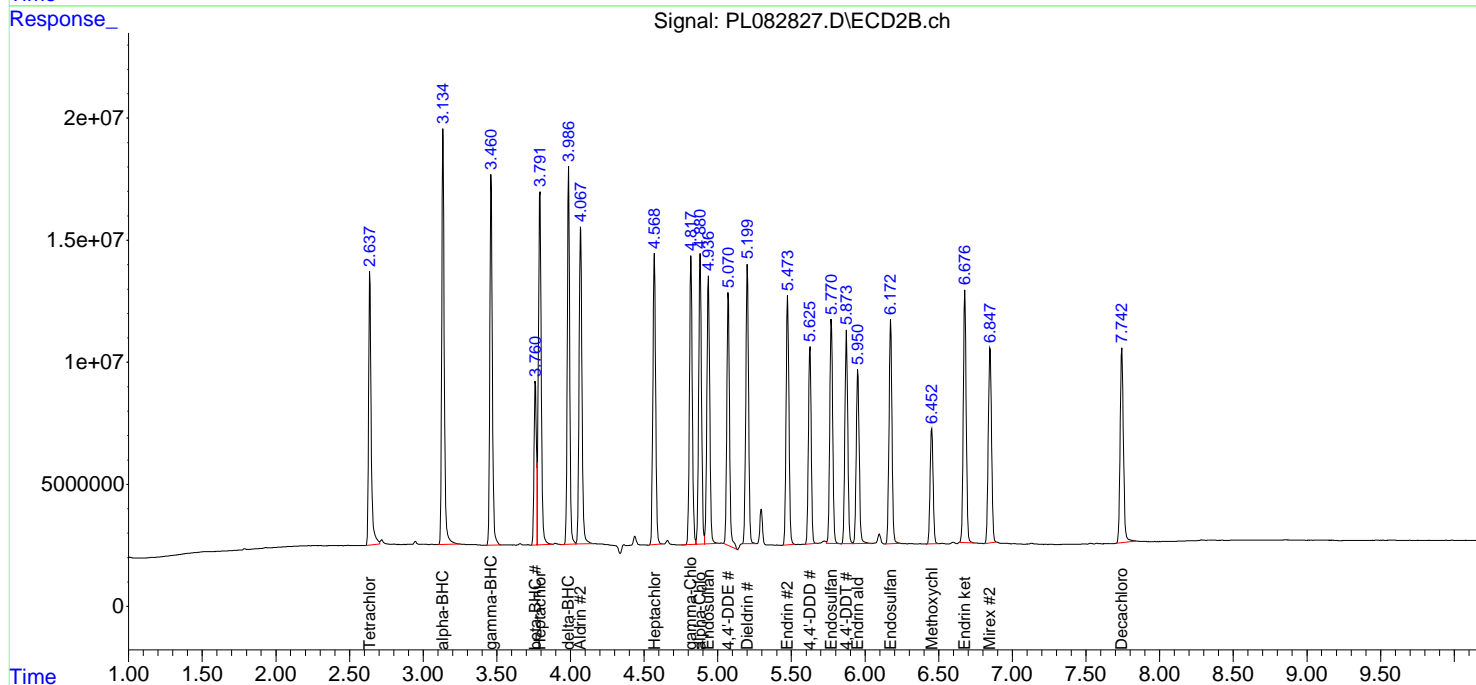
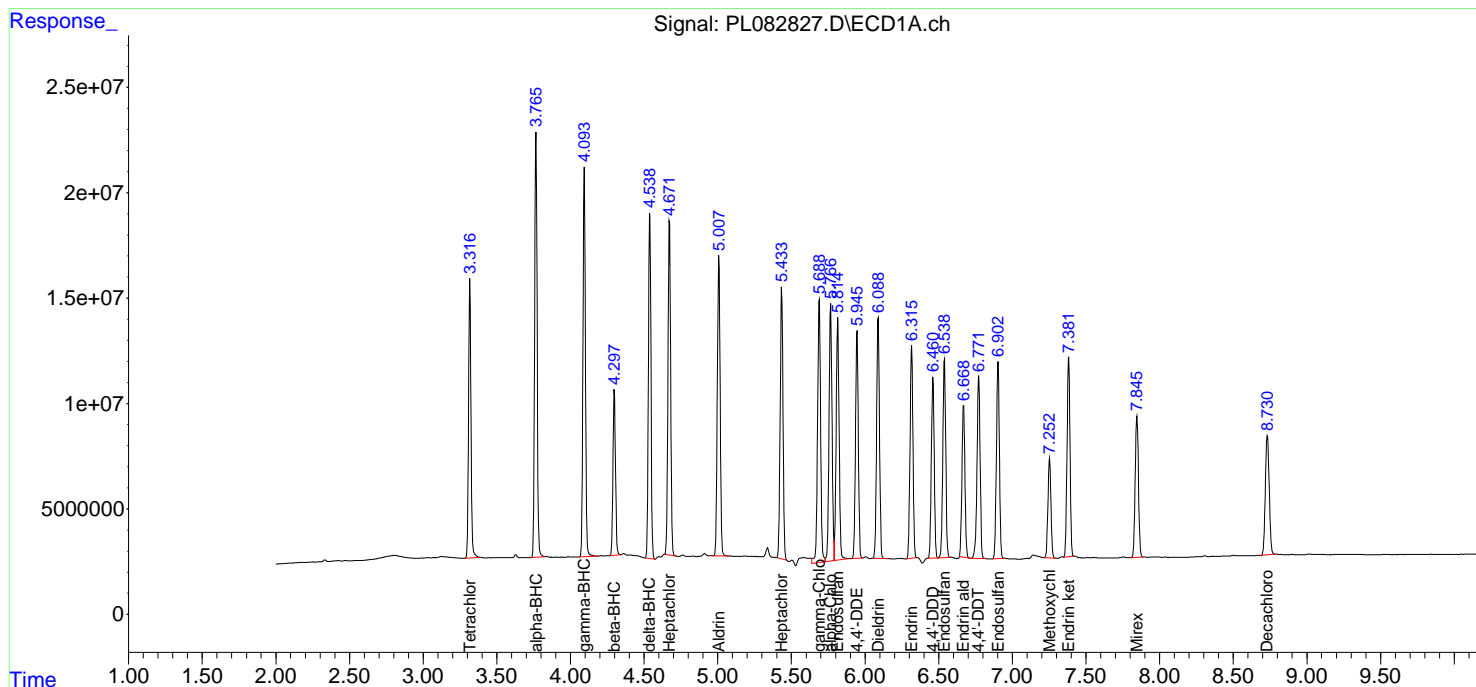
(f)=RT Delta > 1/2 Window (#)=Amounts differ by > 25% (m)=manual int.

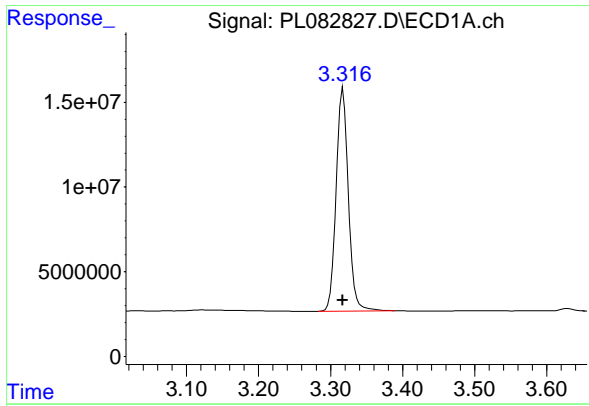
Data Path : Z:\pestpcbsrv\HPCHEM1\ECD_L\Data\PL051923\
 Data File : PL082827.D
 Signal(s) : Signal #1: ECD1A.ch Signal #2: ECD2B.ch
 Acq On : 19 May 2023 18:34
 Operator : AR\AJ
 Sample : PSTDCCC050
 Misc :
 ALS Vial : 4 Sample Multiplier: 1

Instrument :
 ECD_L
 ClientSampleId :
 PSTDCCC050

Integration File signal 1: autoint1.e
 Integration File signal 2: autoint2.e
 Quant Time: May 20 05:02:17 2023
 Quant Method : Z:\pestpcbsrv\HPCHEM1\ECD_L\methods\PL051923.M
 Quant Title : GC Extractables
 QLast Update : Sat May 20 04:58:53 2023
 Response via : Initial Calibration
 Integrator: ChemStation

Volume Inj. : 1 µl
 Signal #1 Phase : ZB-MR2 Signal #2 Phase: ZB-MR1
 Signal #1 Info : 30M x 0.32mm x0.2 Signal #2 Info : 30M x 0.32mm x0.5µm

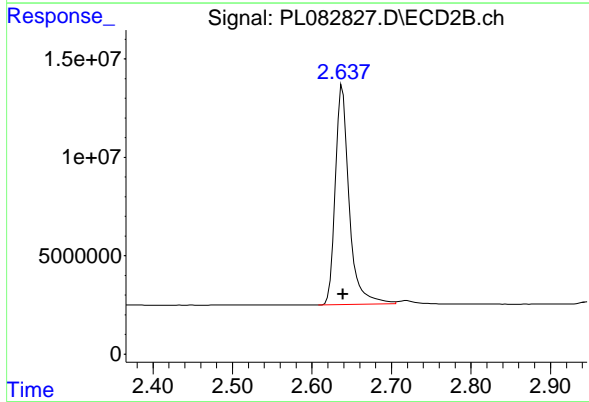




#1 Tetrachloro-m-xylene

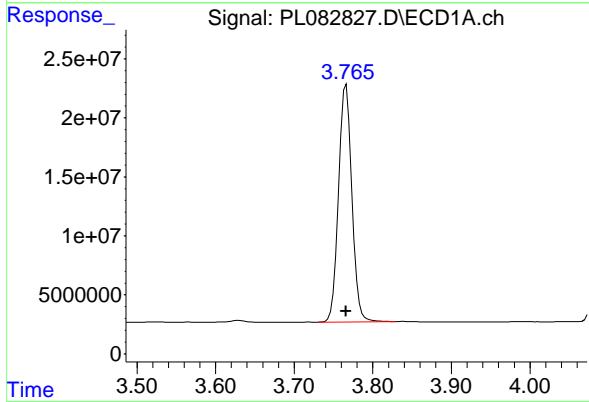
R.T.: 3.317 min
 Delta R.T.: 0.000 min
 Response: 153643674
 Conc: 52.28 ng/ml

Instrument :
 ECD_L
 ClientSampleId :
 PSTDCCC050



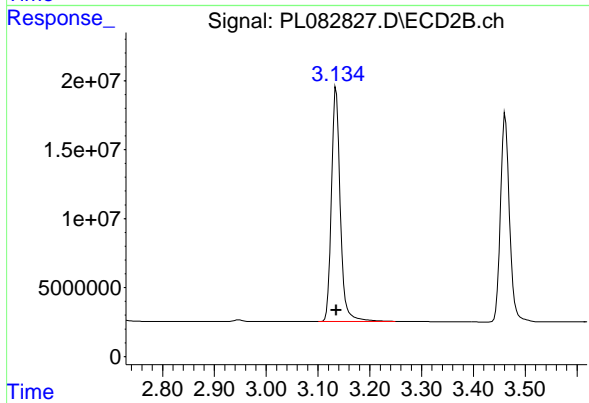
#1 Tetrachloro-m-xylene

R.T.: 2.638 min
 Delta R.T.: 0.000 min
 Response: 135724760
 Conc: 52.28 ng/ml



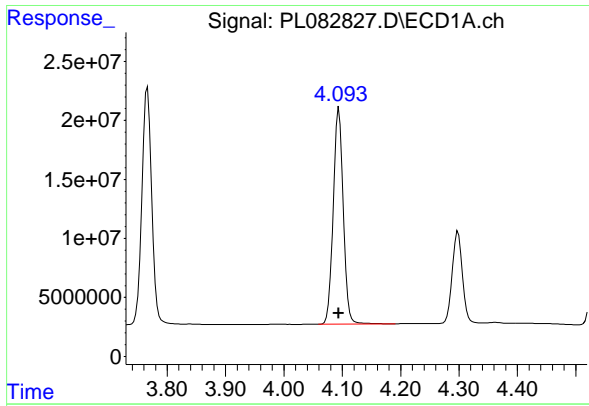
#2 alpha-BHC

R.T.: 3.766 min
 Delta R.T.: 0.000 min
 Response: 236786794
 Conc: 53.34 ng/ml



#2 alpha-BHC

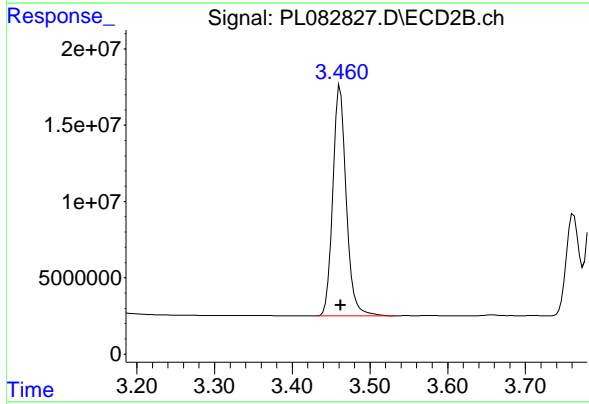
R.T.: 3.135 min
 Delta R.T.: 0.000 min
 Response: 201339166
 Conc: 53.96 ng/ml



#3 gamma-BHC (Lindane)

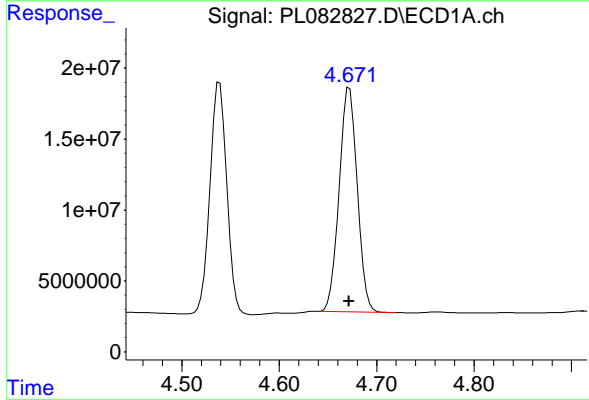
R.T.: 4.094 min
 Delta R.T.: 0.000 min
 Response: 219438082
 Conc: 52.97 ng/ml

Instrument :
 ECD_L
 ClientSampleId :
 PSTDCCC050



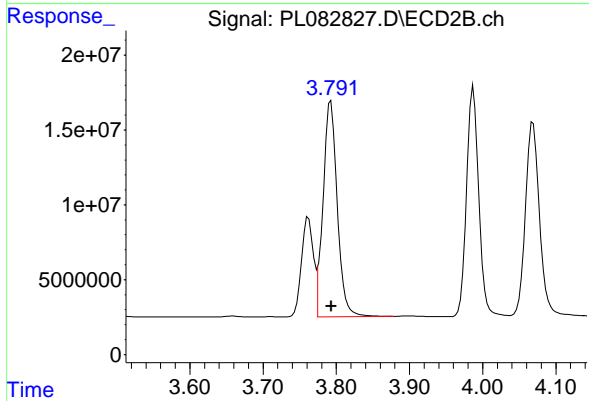
#3 gamma-BHC (Lindane)

R.T.: 3.461 min
 Delta R.T.: 0.000 min
 Response: 181957456
 Conc: 54.59 ng/ml



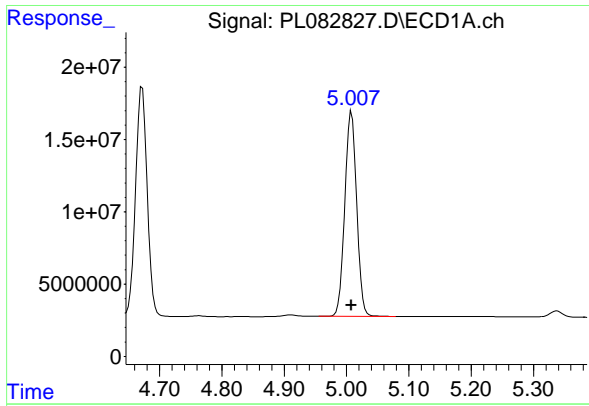
#4 Heptachlor

R.T.: 4.672 min
 Delta R.T.: 0.000 min
 Response: 204471173
 Conc: 53.49 ng/ml



#4 Heptachlor

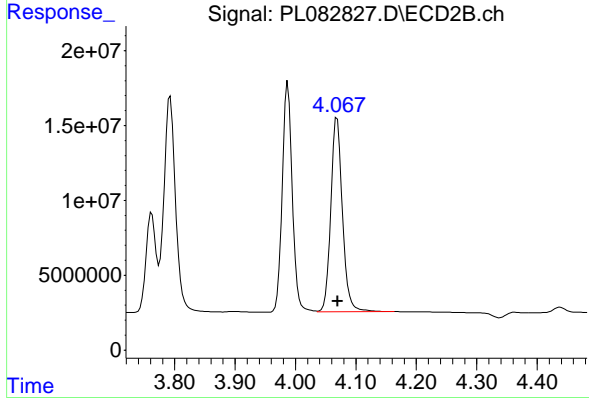
R.T.: 3.793 min
 Delta R.T.: 0.000 min
 Response: 194470027
 Conc: 53.12 ng/ml



#5 Aldrin

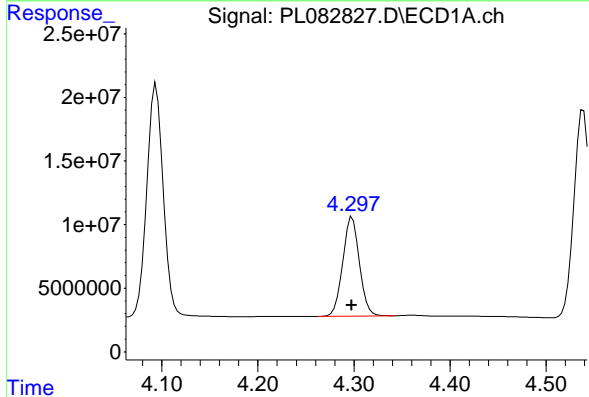
R.T.: 5.008 min
 Delta R.T.: 0.000 min
 Response: 187413462
 Conc: 53.27 ng/ml

Instrument :
 ECD_L
 ClientSampleId :
 PSTDCCC050



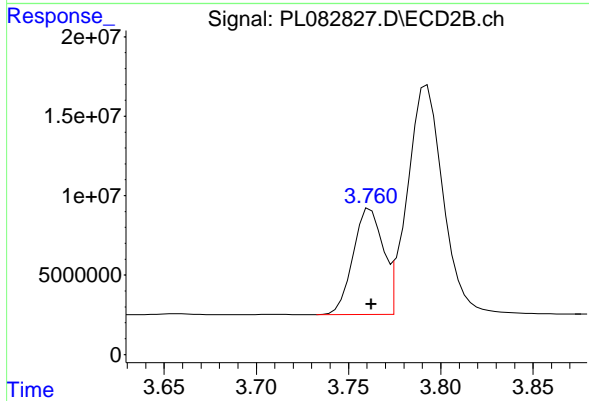
#5 Aldrin

R.T.: 4.069 min
 Delta R.T.: 0.000 min
 Response: 173896926
 Conc: 53.45 ng/ml



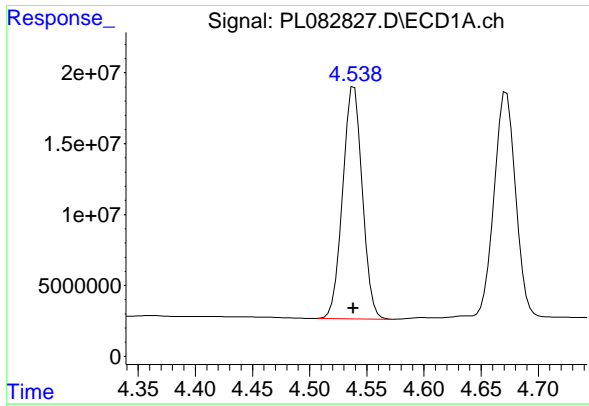
#6 beta-BHC

R.T.: 4.298 min
 Delta R.T.: 0.000 min
 Response: 93254171
 Conc: 49.53 ng/ml



#6 beta-BHC

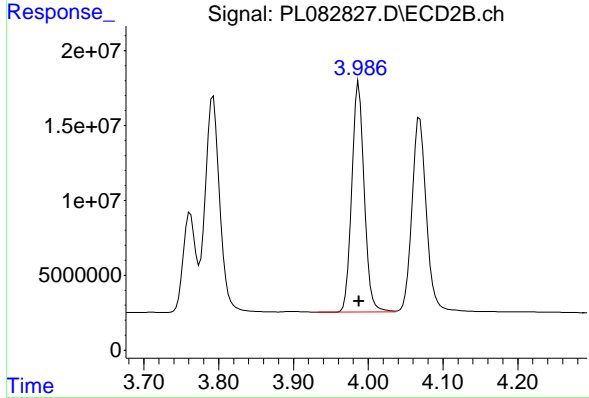
R.T.: 3.762 min
 Delta R.T.: 0.000 min
 Response: 75123234
 Conc: 52.53 ng/ml



#7 delta-BHC

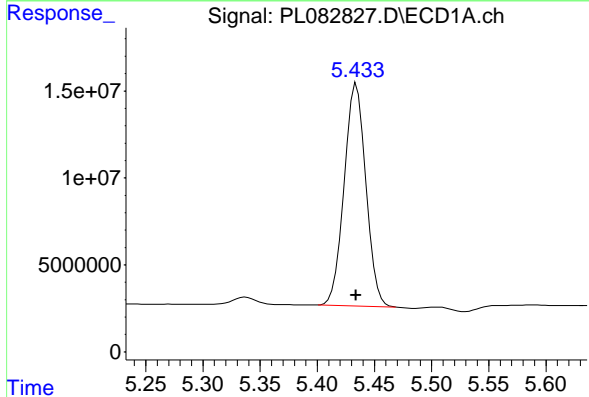
R.T.: 4.539 min
 Delta R.T.: 0.000 min
 Response: 196617054
 Conc: 57.17 ng/ml

Instrument :
 ECD_L
 ClientSampleId :
 PSTDCCC050



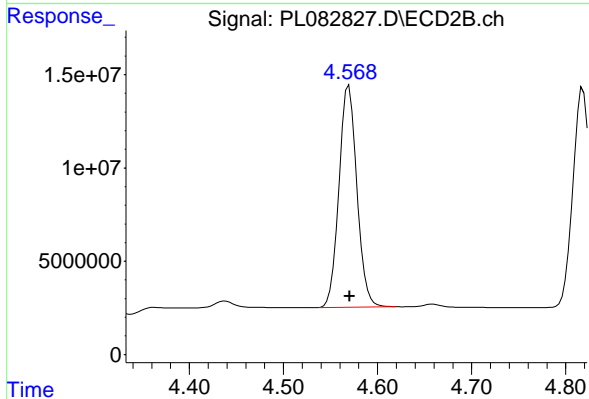
#7 delta-BHC

R.T.: 3.987 min
 Delta R.T.: 0.000 min
 Response: 177135775
 Conc: 54.06 ng/ml



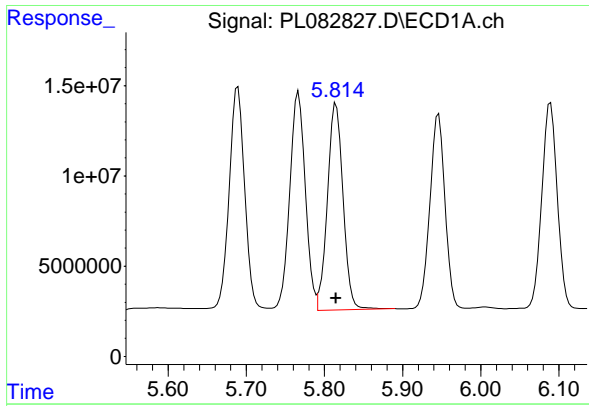
#8 Heptachlor epoxide

R.T.: 5.434 min
 Delta R.T.: 0.000 min
 Response: 169690909
 Conc: 53.05 ng/ml



#8 Heptachlor epoxide

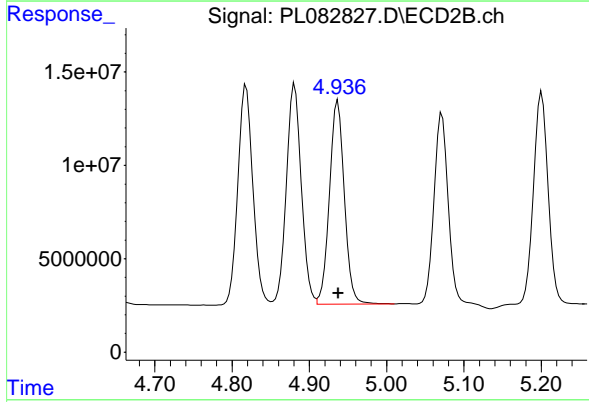
R.T.: 4.570 min
 Delta R.T.: 0.000 min
 Response: 157464989
 Conc: 53.06 ng/ml



#9 Endosulfan I

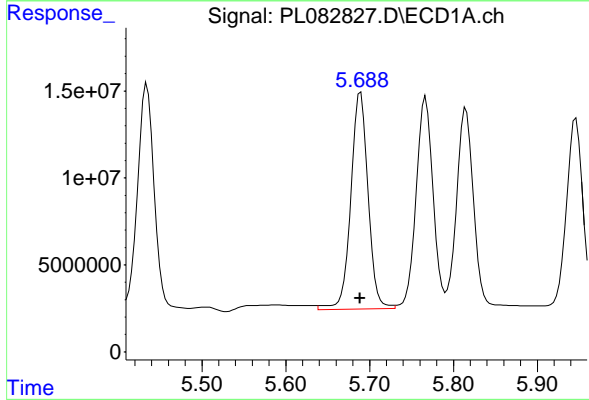
R.T.: 5.815 min
 Delta R.T.: 0.000 min
 Response: 159146245
 Conc: 53.04 ng/ml

Instrument :
 ECD_L
 ClientSampleId :
 PSTDCCC050



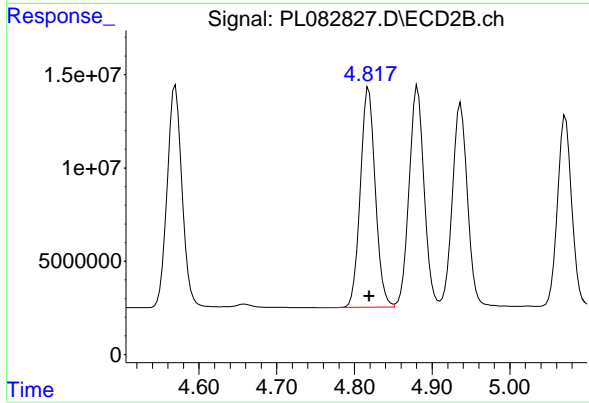
#9 Endosulfan I

R.T.: 4.937 min
 Delta R.T.: 0.000 min
 Response: 146647521
 Conc: 52.48 ng/ml



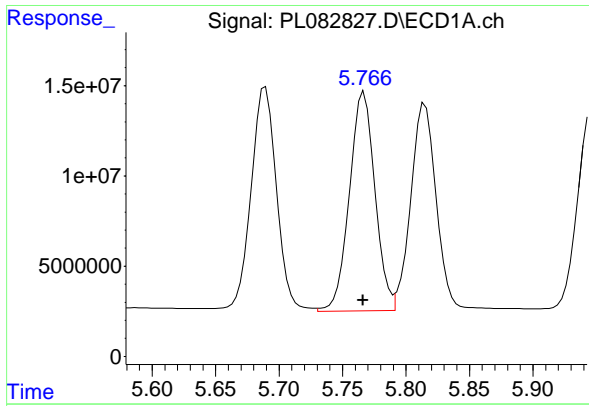
#10 gamma-Chlordane

R.T.: 5.689 min
 Delta R.T.: 0.000 min
 Response: 178339095
 Conc: 56.13 ng/ml



#10 gamma-Chlordane

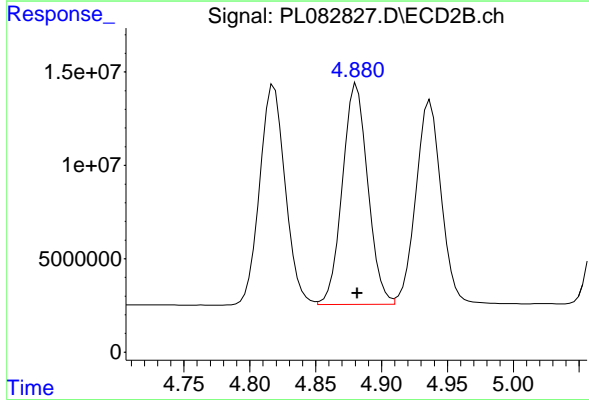
R.T.: 4.818 min
 Delta R.T.: 0.000 min
 Response: 158254771
 Conc: 52.69 ng/ml



#11 alpha-Chlordane

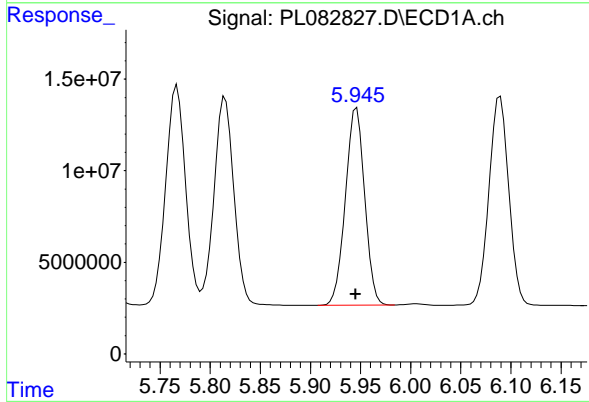
R.T.: 5.767 min
 Delta R.T.: 0.000 min
 Response: 169648108
 Conc: 52.86 ng/ml

Instrument :
 ECD_L
 ClientSampleId :
 PSTDCCC050



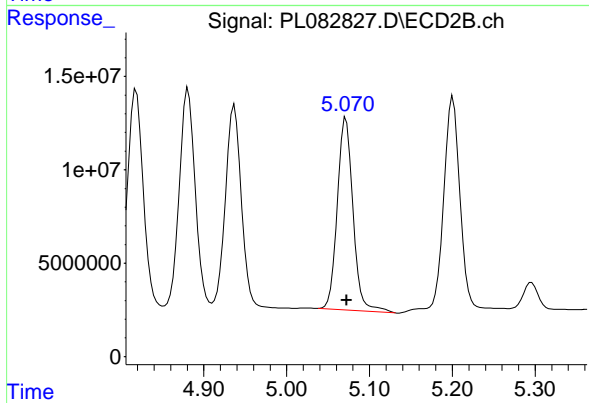
#11 alpha-Chlordane

R.T.: 4.881 min
 Delta R.T.: 0.000 min
 Response: 158378716
 Conc: 52.76 ng/ml



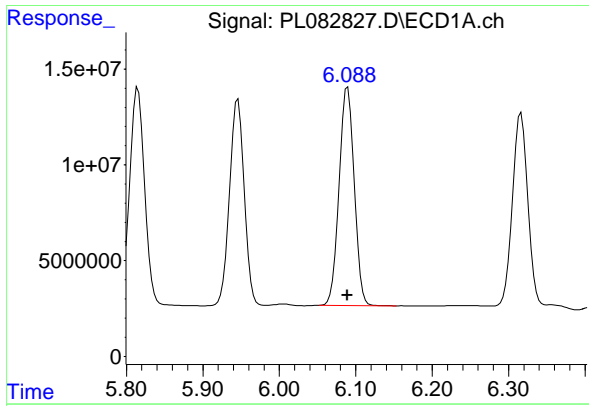
#12 4,4'-DDE

R.T.: 5.946 min
 Delta R.T.: 0.000 min
 Response: 143972799
 Conc: 52.23 ng/ml



#12 4,4'-DDE

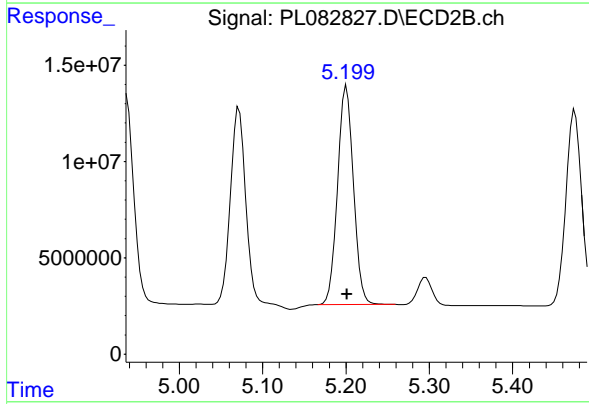
R.T.: 5.072 min
 Delta R.T.: 0.000 min
 Response: 135617456
 Conc: 55.84 ng/ml



#13 Dieldrin

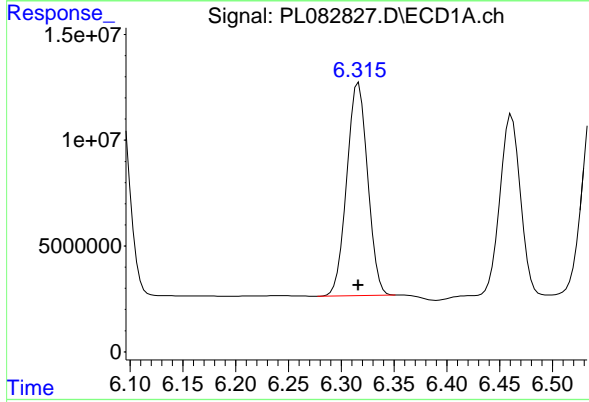
R.T.: 6.089 min
 Delta R.T.: 0.000 min
 Response: 156788694
 Conc: 52.13 ng/ml

Instrument :
 ECD_L
 ClientSampleId :
 PSTDCCC050



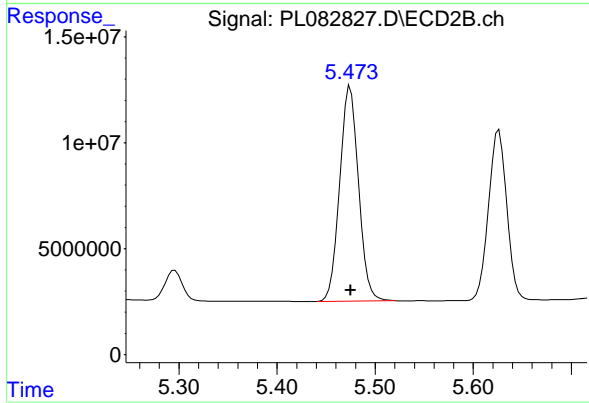
#13 Dieldrin

R.T.: 5.201 min
 Delta R.T.: 0.000 min
 Response: 150183015
 Conc: 53.20 ng/ml



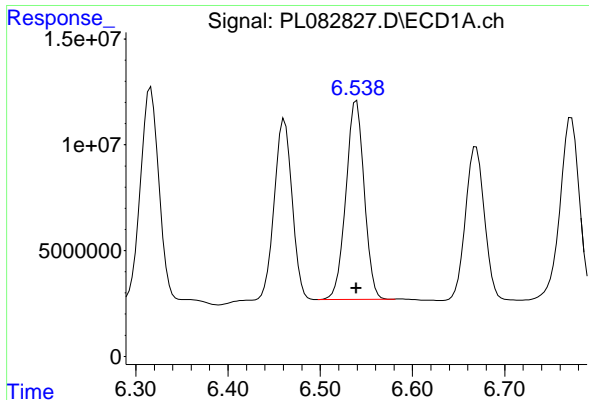
#14 Endrin

R.T.: 6.316 min
 Delta R.T.: 0.000 min
 Response: 138398716
 Conc: 51.50 ng/ml



#14 Endrin

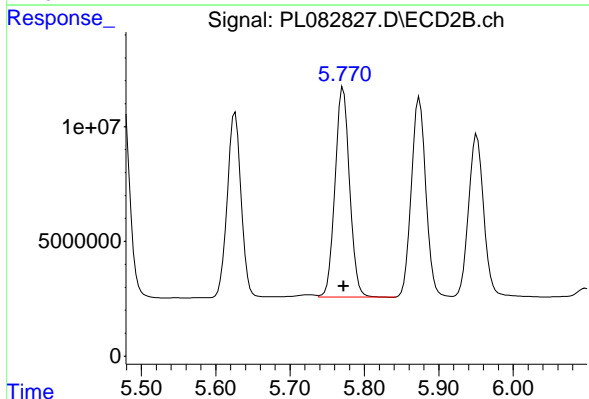
R.T.: 5.475 min
 Delta R.T.: 0.000 min
 Response: 135559744
 Conc: 53.43 ng/ml



#15 Endosulfan II

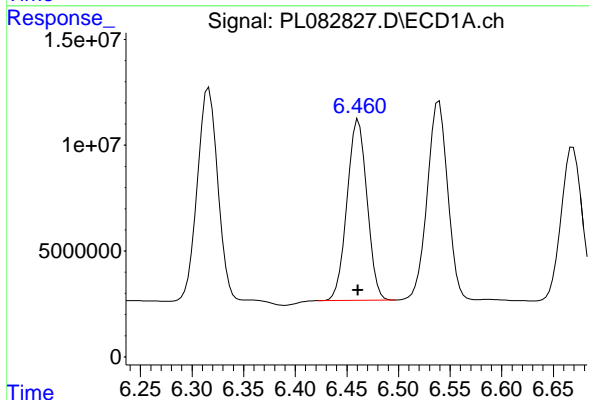
R.T.: 6.539 min
 Delta R.T.: 0.000 min
 Response: 129331432
 Conc: 48.81 ng/ml

Instrument : ECD_L
 ClientSampleId : PSTDCCC050



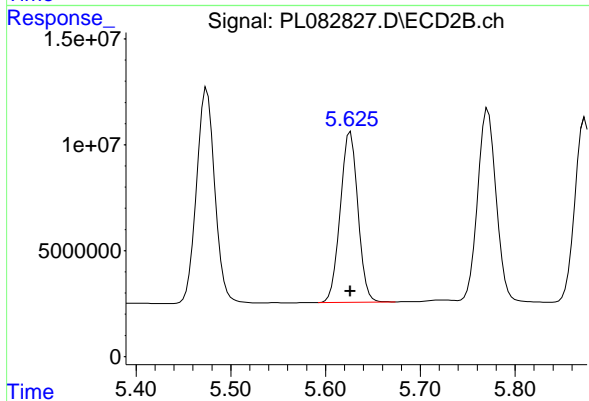
#15 Endosulfan II

R.T.: 5.771 min
 Delta R.T.: 0.000 min
 Response: 124154868
 Conc: 50.18 ng/ml



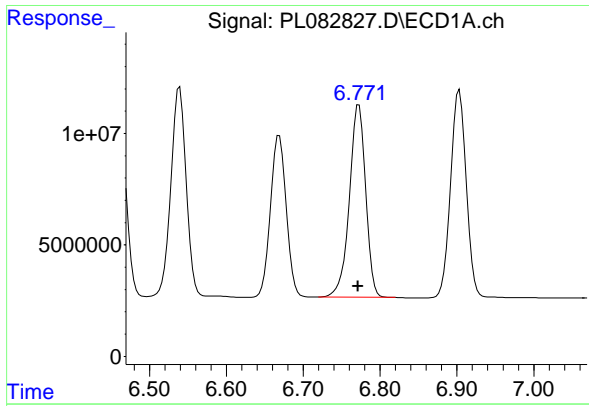
#16 4,4'-DDD

R.T.: 6.461 min
 Delta R.T.: 0.000 min
 Response: 115029719
 Conc: 52.93 ng/ml



#16 4,4'-DDD

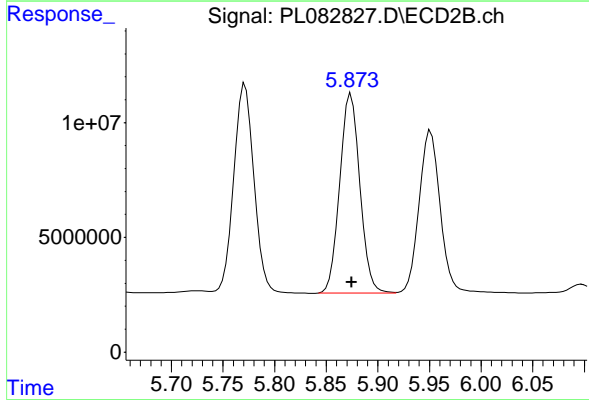
R.T.: 5.626 min
 Delta R.T.: 0.000 min
 Response: 103736033
 Conc: 53.94 ng/ml



#17 4,4'-DDT

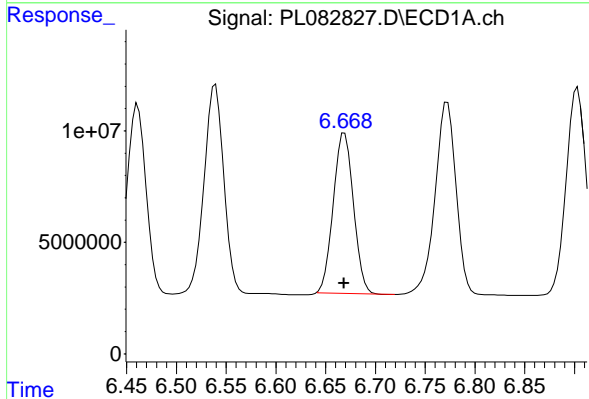
R.T.: 6.772 min
 Delta R.T.: 0.000 min
 Response: 126873179
 Conc: 50.68 ng/ml

Instrument :
 ECD_L
 ClientSampleId :
 PSTDCCC050



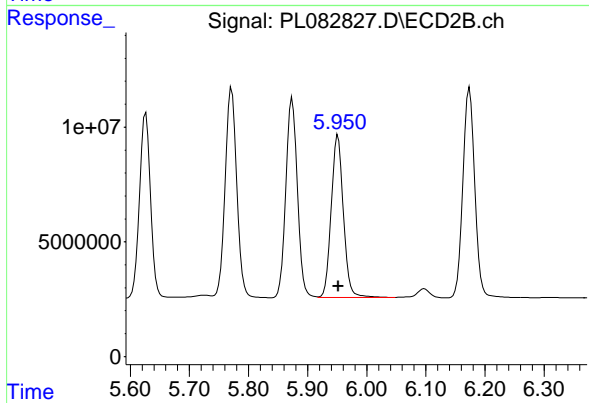
#17 4,4'-DDT

R.T.: 5.874 min
 Delta R.T.: 0.000 min
 Response: 118129547
 Conc: 52.95 ng/ml



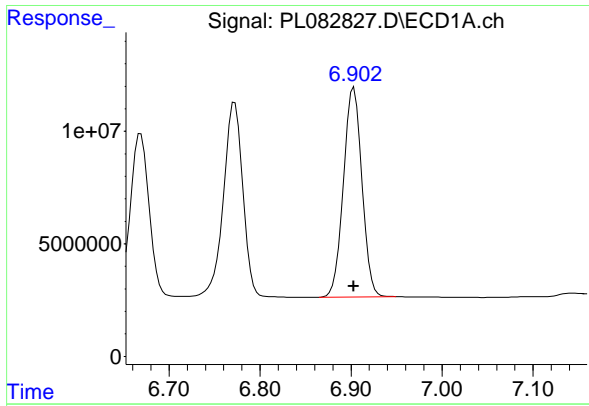
#18 Endrin aldehyde

R.T.: 6.669 min
 Delta R.T.: 0.000 min
 Response: 101444016
 Conc: 50.45 ng/ml



#18 Endrin aldehyde

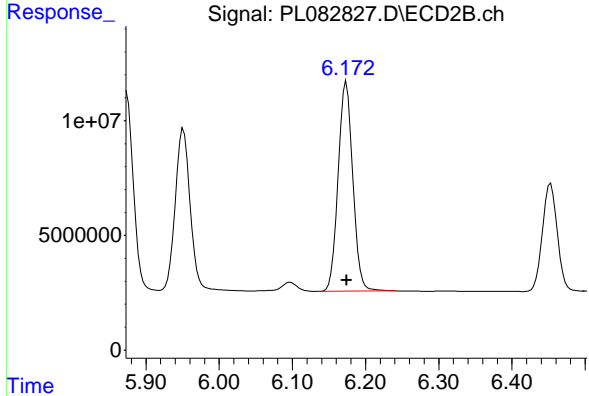
R.T.: 5.951 min
 Delta R.T.: 0.000 min
 Response: 100911184
 Conc: 51.03 ng/ml



#19 Endosulfan Sulfate

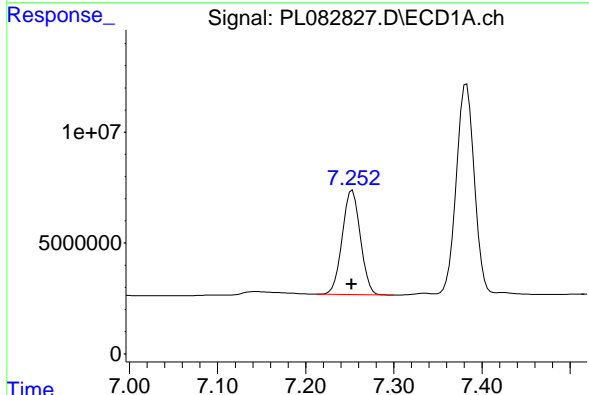
R.T.: 6.903 min
 Delta R.T.: 0.000 min
 Response: 131863521
 Conc: 51.43 ng/ml

Instrument :
 ECD_L
 ClientSampleId :
 PSTDCCC050



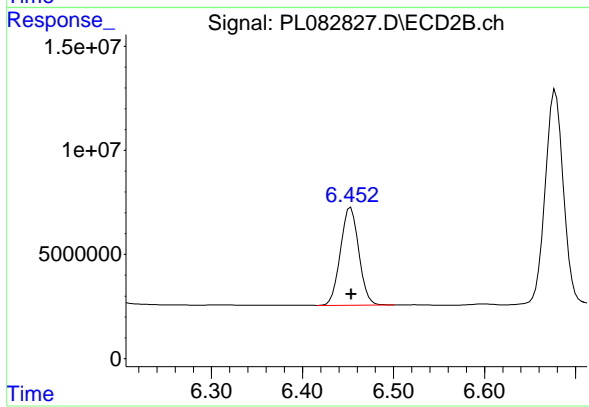
#19 Endosulfan Sulfate

R.T.: 6.174 min
 Delta R.T.: 0.000 min
 Response: 127331383
 Conc: 51.99 ng/ml



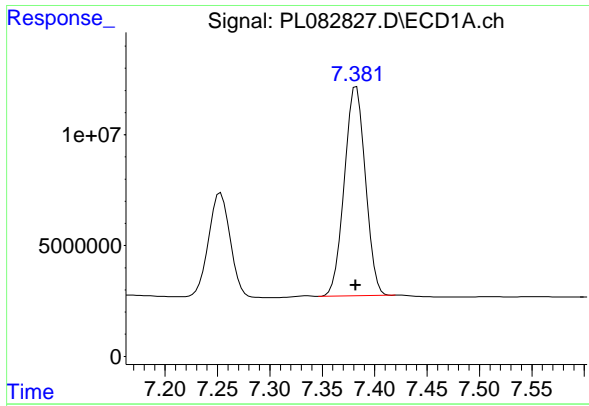
#20 Methoxychlor

R.T.: 7.253 min
 Delta R.T.: 0.000 min
 Response: 67247916
 Conc: 50.85 ng/ml



#20 Methoxychlor

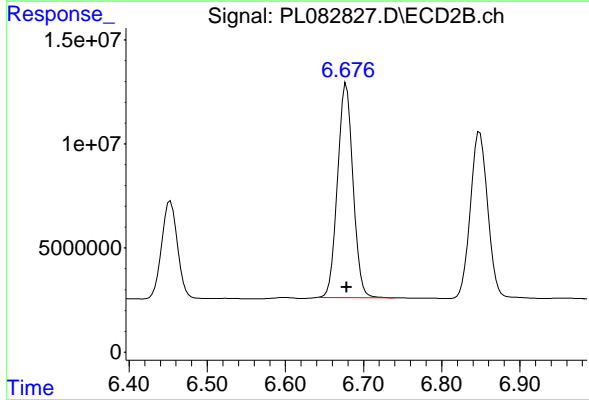
R.T.: 6.453 min
 Delta R.T.: 0.000 min
 Response: 65993536
 Conc: 51.89 ng/ml



#21 Endrin ketone

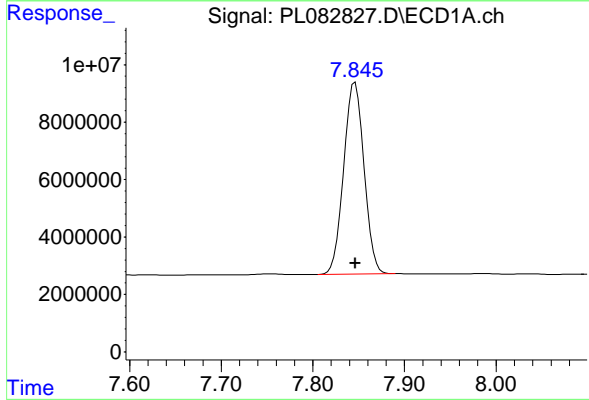
R.T.: 7.383 min
 Delta R.T.: 0.000 min
 Response: 132727256
 Conc: 52.03 ng/ml

Instrument :
 ECD_L
 ClientSampleId :
 PSTDCCC050



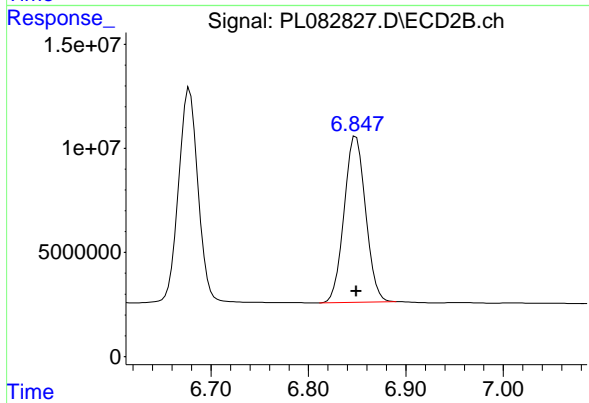
#21 Endrin ketone

R.T.: 6.678 min
 Delta R.T.: 0.000 min
 Response: 141723225
 Conc: 52.42 ng/ml



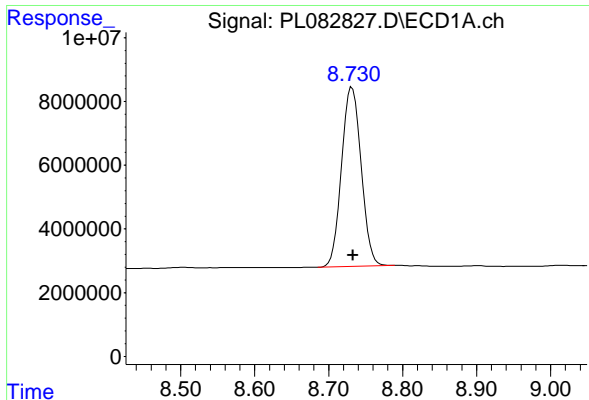
#22 Mirex

R.T.: 7.846 min
 Delta R.T.: 0.000 min
 Response: 103548670
 Conc: 49.40 ng/ml



#22 Mirex

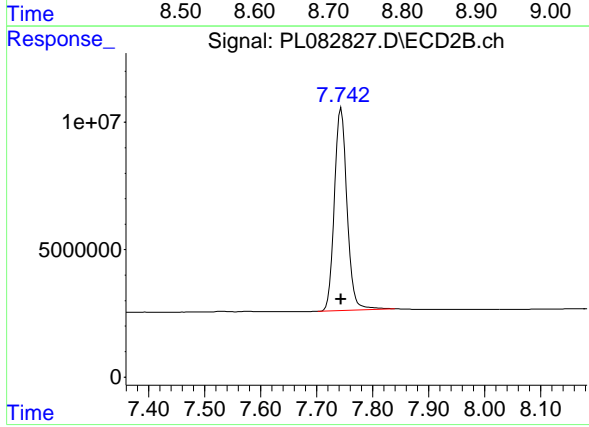
R.T.: 6.849 min
 Delta R.T.: 0.000 min
 Response: 121901522
 Conc: 52.10 ng/ml



#28 Decachlorobiphenyl

R.T.: 8.732 min
Delta R.T.: -0.001 min
Response: 103830799
Conc: 49.51 ng/ml

Instrument :
ECD_L
ClientSampleId :
PSTDCCC050



#28 Decachlorobiphenyl

R.T.: 7.744 min
Delta R.T.: 0.000 min
Response: 125045372
Conc: 50.29 ng/ml