

Data Path : Z:\pestpcbsrv\HPCHEM1\ECD_L\Data\PL051923\
 Data File : PL082839.D
 Signal(s) : Signal #1: ECD1A.ch Signal #2: ECD2B.ch
 Acq On : 19 May 2023 21:36
 Operator : AR\AJ
 Sample : 02849-01
 Misc :
 ALS Vial : 34 Sample Multiplier: 1

Instrument :
 ECD_L
 ClientSampleId :
 TP7

Integration File signal 1: autoint1.e
 Integration File signal 2: autoint2.e
 Quant Time: May 20 05:05:37 2023
 Quant Method : Z:\pestpcbsrv\HPCHEM1\ECD_L\methods\PL051923.M
 Quant Title : GC Extractables
 QLast Update : Sat May 20 04:58:53 2023
 Response via : Initial Calibration
 Integrator: ChemStation

Volume Inj. : 1 µl
 Signal #1 Phase : ZB-MR2 Signal #2 Phase: ZB-MR1
 Signal #1 Info : 30M x 0.32mm x0.2 Signal #2 Info : 30M x 0.32mm x0.5µm

Compound	RT#1	RT#2	Resp#1	Resp#2	ng/ml	ng/ml

System Monitoring Compounds						
1) SA Tetrachlo...	3.317	2.639	40953510	36701987	13.934	14.137
28) SA Decachlor...	8.731	7.743	24891977	30460754	11.868	12.250

Target Compounds

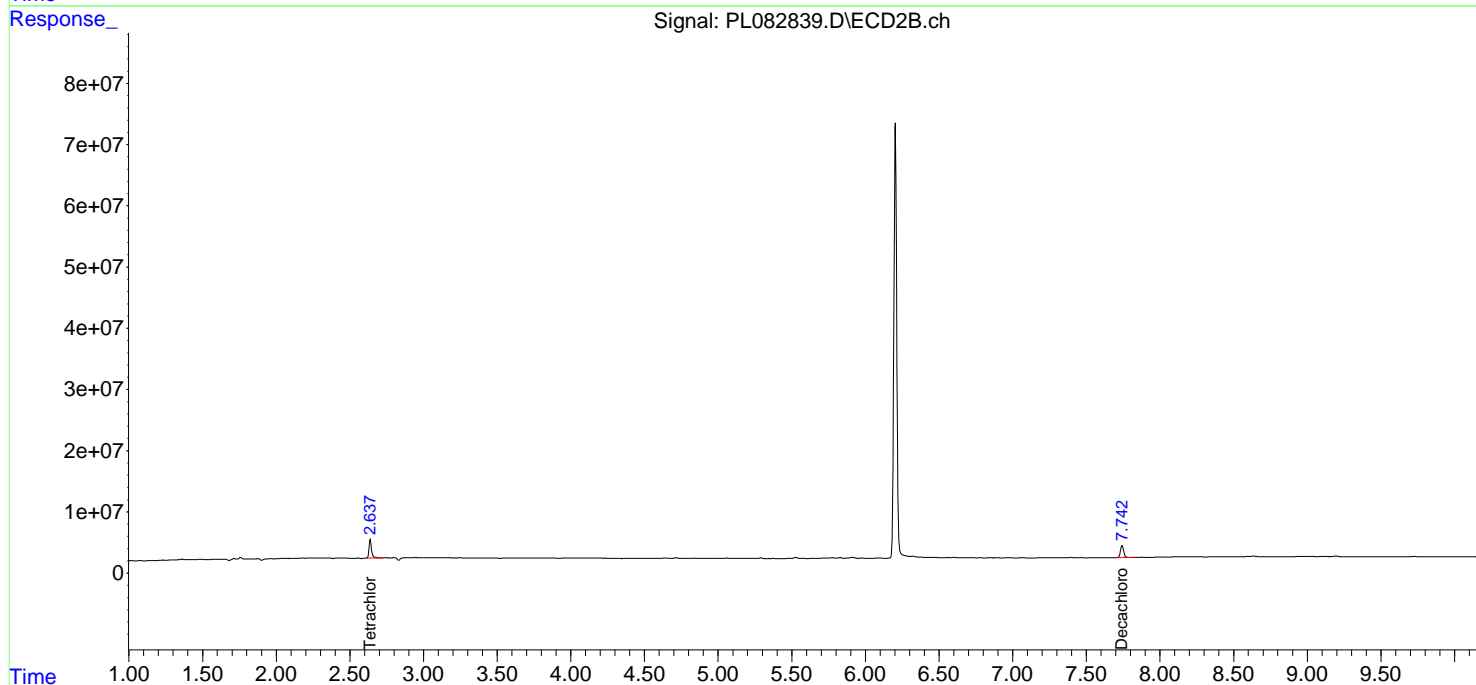
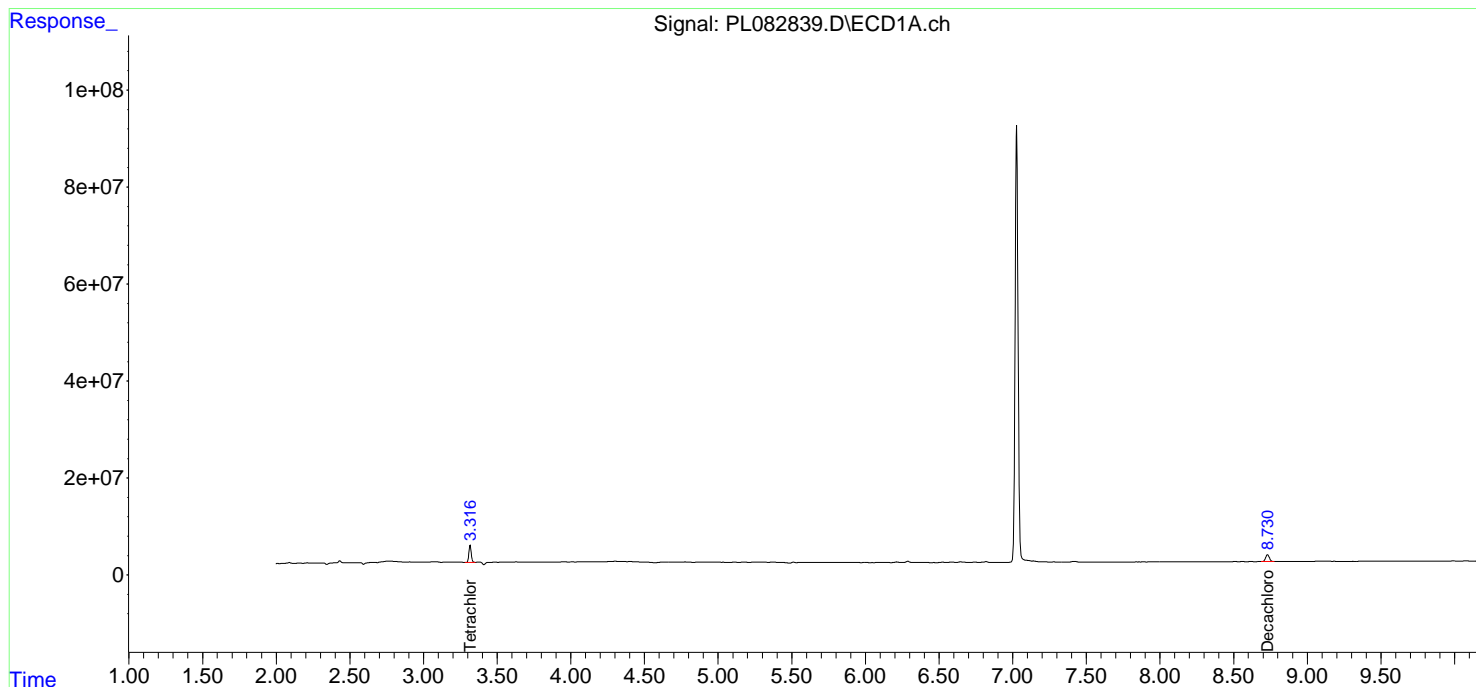
(f)=RT Delta > 1/2 Window (#)=Amounts differ by > 25% (m)=manual int.

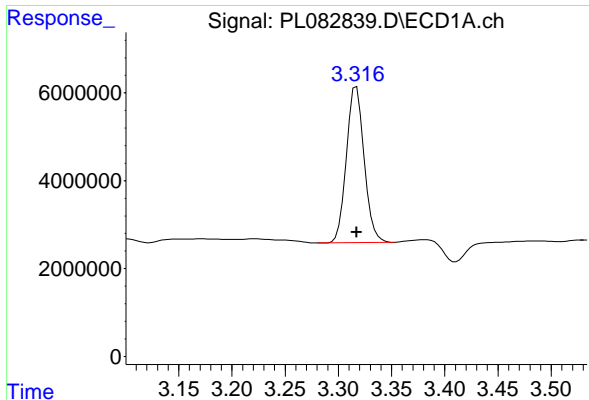
Data Path : Z:\pestpcbsrv\HPCHEM1\ECD_L\Data\PL051923\
Data File : PL082839.D
Signal(s) : Signal #1: ECD1A.ch Signal #2: ECD2B.ch
Acq On : 19 May 2023 21:36
Operator : AR\AJ
Sample : 02849-01
Misc :
ALS Vial : 34 Sample Multiplier: 1

Instrument :
ECD_L
ClientSampleId :
TP7

Integration File signal 1: autoint1.e
Integration File signal 2: autoint2.e
Quant Time: May 20 05:05:37 2023
Quant Method : Z:\pestpcbsrv\HPCHEM1\ECD_L\methods\PL051923.M
Quant Title : GC Extractables
QLast Update : Sat May 20 04:58:53 2023
Response via : Initial Calibration
Integrator: ChemStation

Volume Inj. : 1 µl
Signal #1 Phase : ZB-MR2 Signal #2 Phase: ZB-MR1
Signal #1 Info : 30M x 0.32mm x0.2 Signal #2 Info : 30M x 0.32mm x0.5µm

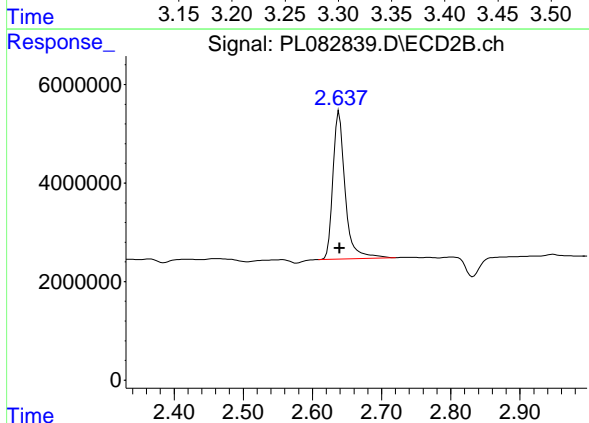




#1 Tetrachloro-m-xylene

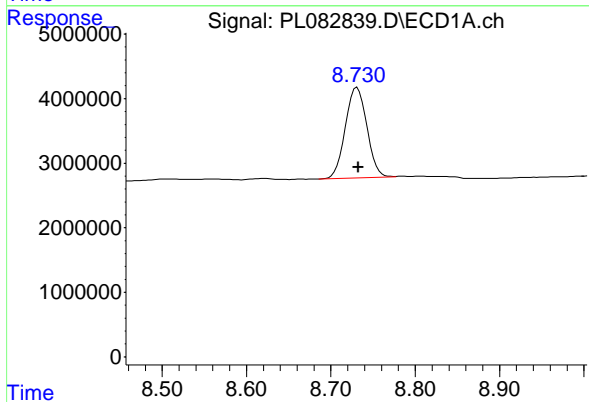
R.T.: 3.317 min
 Delta R.T.: 0.000 min
 Response: 40953510
 Conc: 13.93 ng/ml

Instrument :
 ECD_L
 ClientSampleId :
 TP7



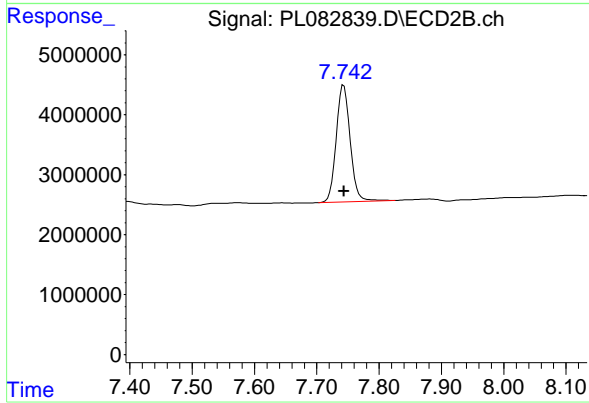
#1 Tetrachloro-m-xylene

R.T.: 2.639 min
 Delta R.T.: 0.000 min
 Response: 36701987
 Conc: 14.14 ng/ml



#28 Decachlorobiphenyl

R.T.: 8.731 min
 Delta R.T.: -0.002 min
 Response: 24891977
 Conc: 11.87 ng/ml



#28 Decachlorobiphenyl

R.T.: 7.743 min
 Delta R.T.: 0.000 min
 Response: 30460754
 Conc: 12.25 ng/ml