

Data Path : Z:\pestpcbsrv\HPCHEM1\ECD_L\Data\PL052020\
 Data File : PL058799.D
 Signal(s) : Signal #1: ECD1A.ch Signal #2: ECD2B.ch
 Acq On : 20 May 2020 09:03
 Operator : AJ\MA
 Sample : PSTDICC100
 Misc :
 ALS Vial : 5 Sample Multiplier: 1

Instrument :
 ECD_L
 ClientSampled :

Integration File signal 1: autoint1.e
 Integration File signal 2: autoint2.e
 Quant Time: May 20 11:13:13 2020
 Quant Method : Z:\pestpcbsrv\HPCHEM1\ECD_L\methods\PL052020.M
 Quant Title : GC Extractables
 QLast Update : Wed May 20 11:12:34 2020
 Response via : Initial Calibration
 Integrator: ChemStation

Volume Inj. : 1 µl
 Signal #1 Phase : ZB-MR2 Signal #2 Phase: ZB-MR1
 Signal #1 Info : 30M x 0.32mm x0.2 Signal #2 Info : 30M x 0.32mm x0.5µm

	Compound	RT#1	RT#2	Resp#1	Resp#2	ng/ml	ng/ml

System Monitoring Compounds							
1)	SA Tetrachlo...	3.531	4.077	179.1E6	270.0E6	97.628	97.840
28)	SA Decachlor...	8.313	9.190	157.3E6	238.4E6	94.294	91.995
Target Compounds							
2)	A alpha-BHC	3.973	4.470	278.5E6	426.8E6	102.838	101.653
3)	MA gamma-BHC...	4.259	4.757	244.5E6	395.4E6	101.351	100.272
4)	MA Heptachlor	4.566	5.272	222.5E6	383.4E6	98.556	98.265
5)	MB Aldrin	4.817	5.580	197.3E6	351.5E6	100.291	99.883
6)	B beta-BHC	4.508	4.924	95111726	162.1E6	94.668	96.533
7)	B delta-BHC	4.716	5.145	226.2E6	376.7E6	102.500	99.931
8)	B Heptachlo...	5.263	5.967	182.0E6	323.4E6	97.775	97.080
9)	A Endosulfan I	5.603	6.326	167.2E6	289.9E6	97.490	96.992
10)	B gamma-Chl...	5.491	6.201	182.3E6	324.3E6	98.747	97.197
11)	B alpha-Chl...	5.550	6.275	180.7E6	318.9E6	97.995	96.443
12)	B 4,4'-DDE	5.714	6.429	170.1E6	295.4E6	101.379	99.751
13)	MA Dieldrin	5.848	6.584	179.0E6	307.7E6	100.083	99.240
14)	MA Endrin	6.106	6.803	158.5E6	255.2E6	99.256	99.856
15)	B Endosulfa...	6.378	7.010	162.0E6	262.6E6	97.184	96.254
16)	A 4,4'-DDD	6.230	6.920	144.5E6	242.3E6	100.253	99.451
17)	MA 4,4'-DDT	6.473	7.220	150.5E6	244.4E6	100.844	99.513
18)	B Endrin al...	6.546	7.135	135.3E6	225.9E6	95.849	95.299
19)	B Endosulfa...	6.760	7.358	156.5E6	253.0E6	96.196	95.814
20)	A Methoxychlor	7.019	7.677	81115887	133.2E6	93.931	94.130
21)	B Endrin ke...	7.252	7.831	180.2E6	271.1E6	96.219	97.056
22)	Mirex	7.448	8.289	139.8E6	197.1E6	92.217	91.383

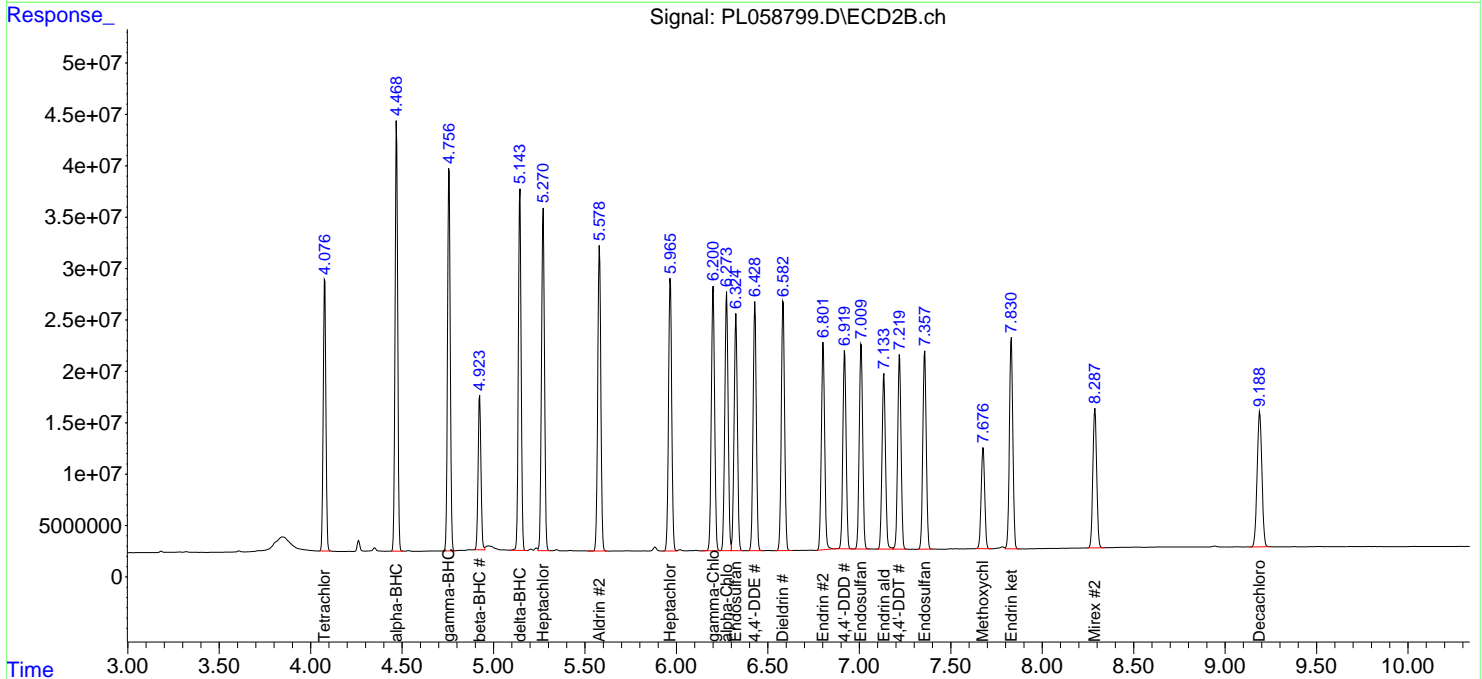
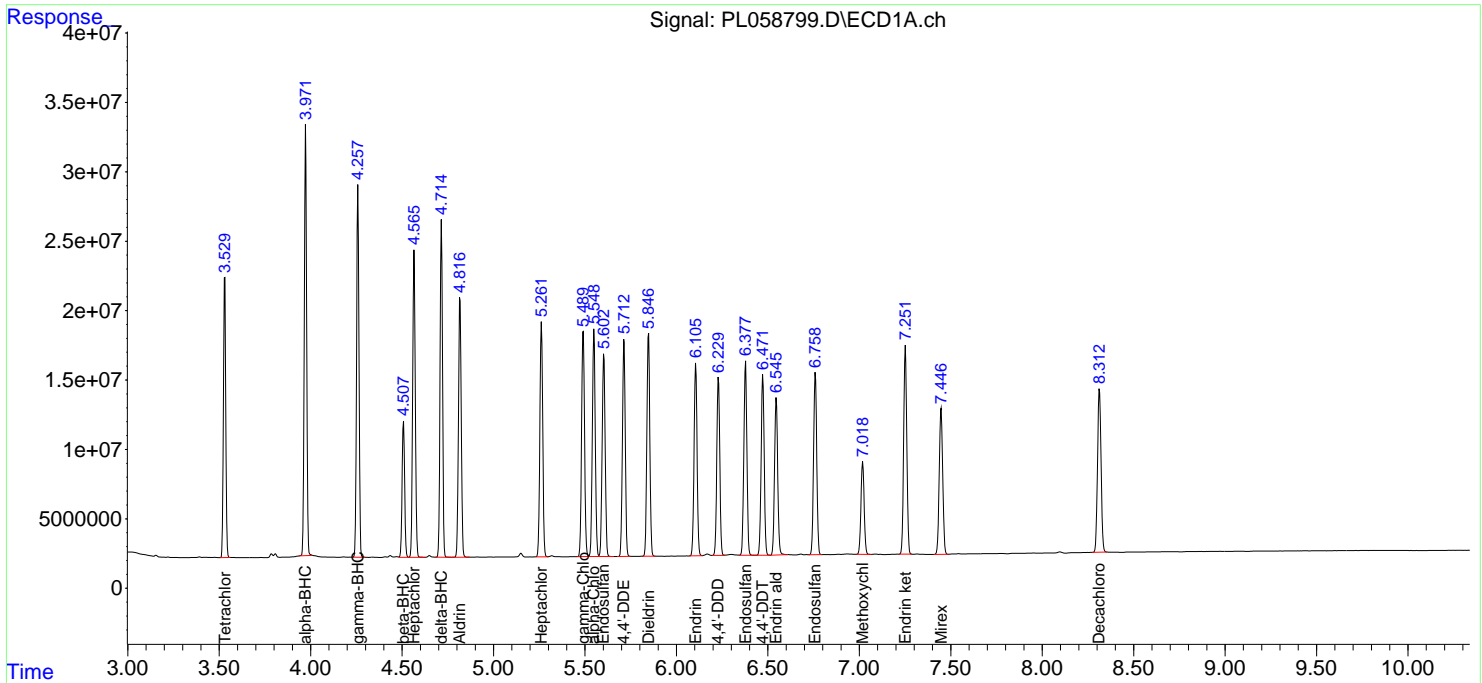
(f)=RT Delta > 1/2 Window (#)=Amounts differ by > 25% (m)=manual int.

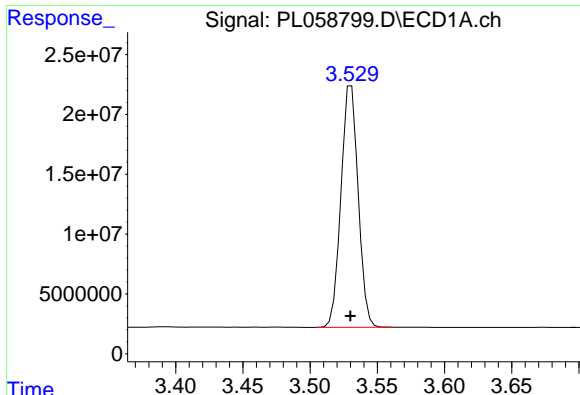
Data Path : Z:\pestpcbsrv\HPCHEM1\ECD_L\Data\PL052020\
 Data File : PL058799.D
 Signal(s) : Signal #1: ECD1A.ch Signal #2: ECD2B.ch
 Acq On : 20 May 2020 09:03
 Operator : AJ\MA
 Sample : PSTDICC100
 Misc :
 ALS Vial : 5 Sample Multiplier: 1

Instrument :
 ECD_L
 ClientSampled :

Integration File signal 1: autoint1.e
 Integration File signal 2: autoint2.e
 Quant Time: May 20 11:13:13 2020
 Quant Method : Z:\pestpcbsrv\HPCHEM1\ECD_L\methods\PL052020.M
 Quant Title : GC Extractables
 QLast Update : Wed May 20 11:12:34 2020
 Response via : Initial Calibration
 Integrator: ChemStation

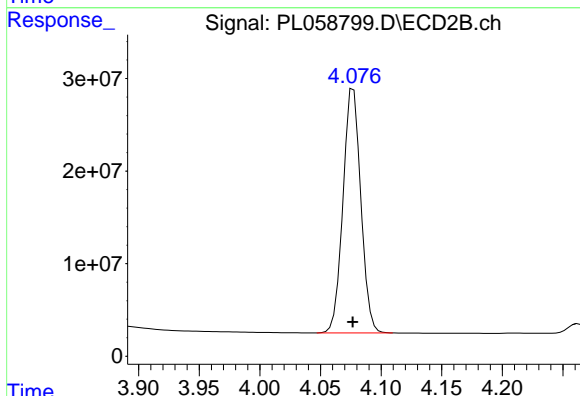
Volume Inj. : 1 µl
 Signal #1 Phase : ZB-MR2 Signal #2 Phase: ZB-MR1
 Signal #1 Info : 30M x 0.32mm x0.2 Signal #2 Info : 30M x 0.32mm x0.5µm



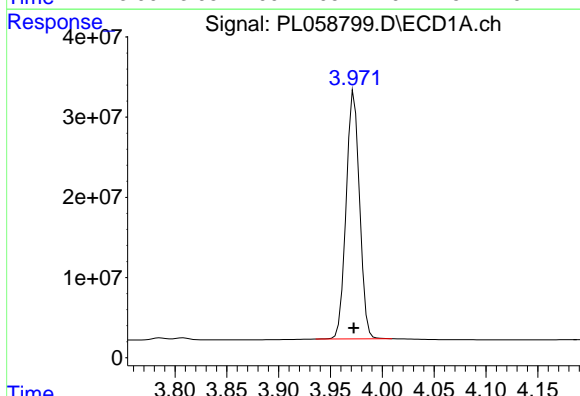


#1 Tetrachloro-m-xylene
 R.T.: 3.531 min
 Delta R.T.: 0.000 min
 Response: 179142687
 Conc: 97.63 ng/ml

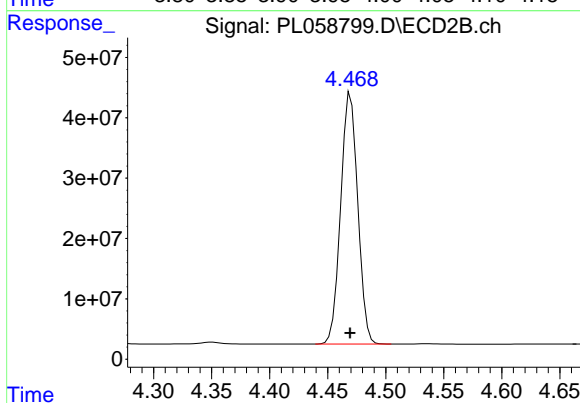
Instrument :
 ECD_L
 ClientSampleId :



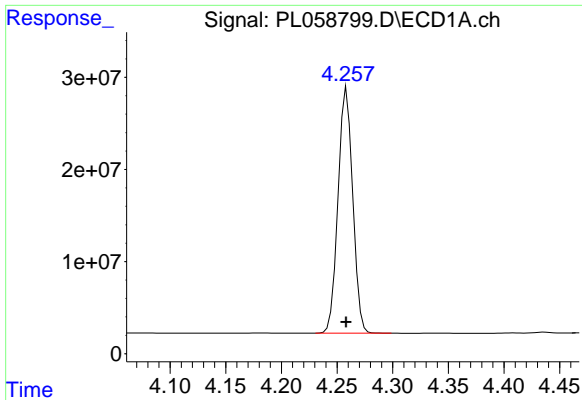
#1 Tetrachloro-m-xylene
 R.T.: 4.077 min
 Delta R.T.: 0.000 min
 Response: 270018624
 Conc: 97.84 ng/ml



#2 alpha-BHC
 R.T.: 3.973 min
 Delta R.T.: 0.000 min
 Response: 278500354
 Conc: 102.84 ng/ml

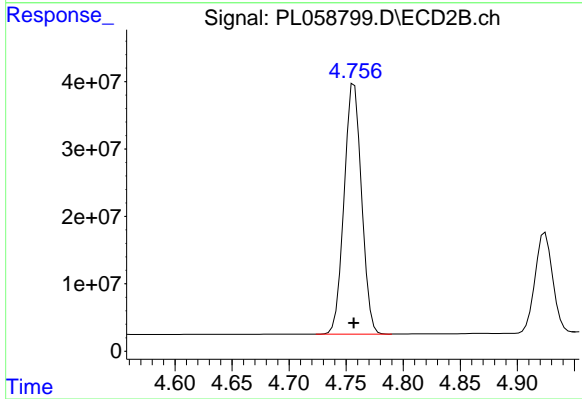


#2 alpha-BHC
 R.T.: 4.470 min
 Delta R.T.: 0.000 min
 Response: 426826682
 Conc: 101.65 ng/ml

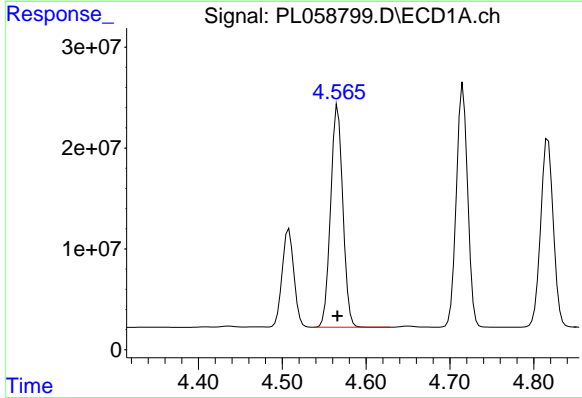


#3 gamma-BHC (Lindane)
R.T.: 4.259 min
Delta R.T.: 0.000 min
Response: 244488880
Conc: 101.35 ng/ml

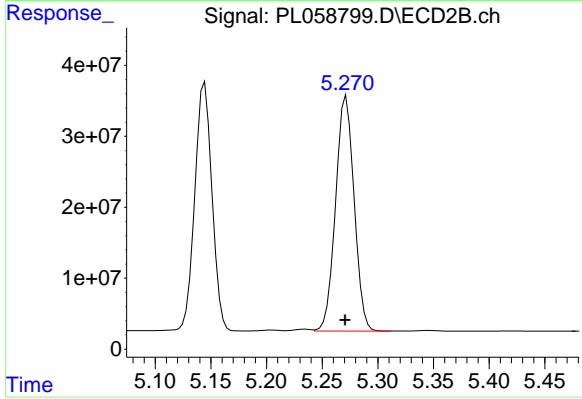
Instrument :
ECD_L
ClientSampleId :



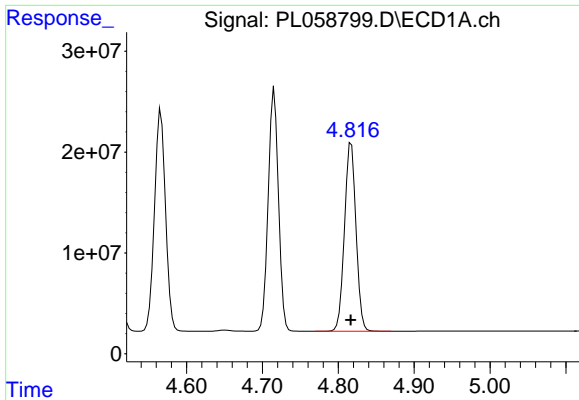
#3 gamma-BHC (Lindane)
R.T.: 4.757 min
Delta R.T.: 0.000 min
Response: 395421409
Conc: 100.27 ng/ml



#4 Heptachlor
R.T.: 4.566 min
Delta R.T.: 0.000 min
Response: 222498872
Conc: 98.56 ng/ml



#4 Heptachlor
R.T.: 5.272 min
Delta R.T.: 0.001 min
Response: 383444838
Conc: 98.27 ng/ml



#5 Aldrin

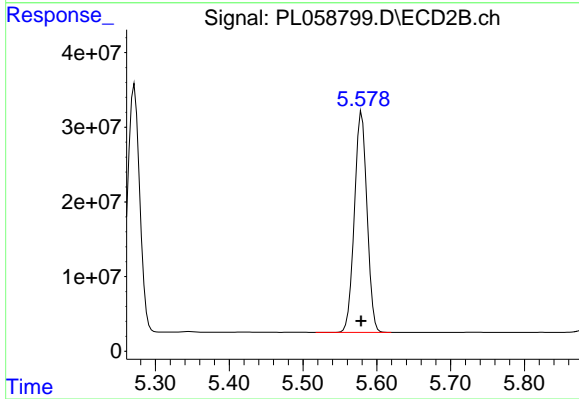
R.T.: 4.817 min

Delta R.T.: 0.000 min

Response: 197324338

Conc: 100.29 ng/ml

Instrument :
ECD_L
ClientSampled :



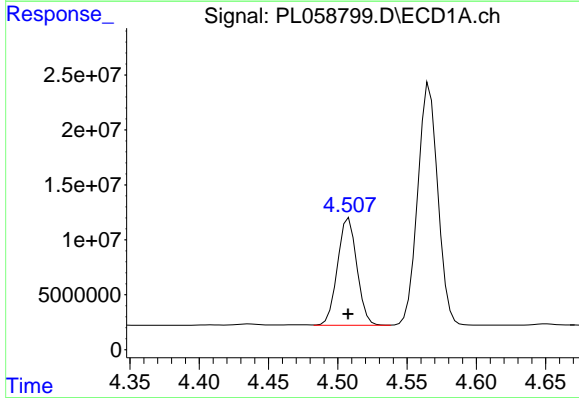
#5 Aldrin

R.T.: 5.580 min

Delta R.T.: 0.000 min

Response: 351524171

Conc: 99.88 ng/ml



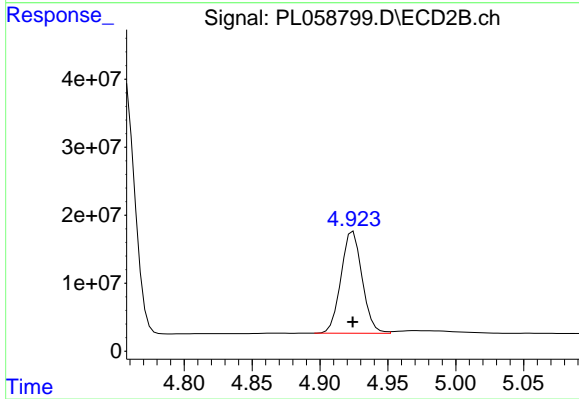
#6 beta-BHC

R.T.: 4.508 min

Delta R.T.: 0.000 min

Response: 95111726

Conc: 94.67 ng/ml



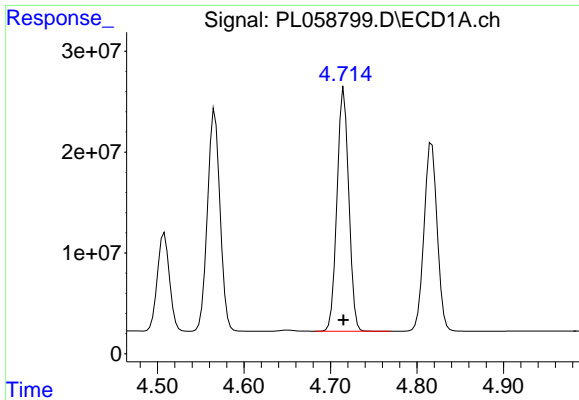
#6 beta-BHC

R.T.: 4.924 min

Delta R.T.: 0.000 min

Response: 162129678

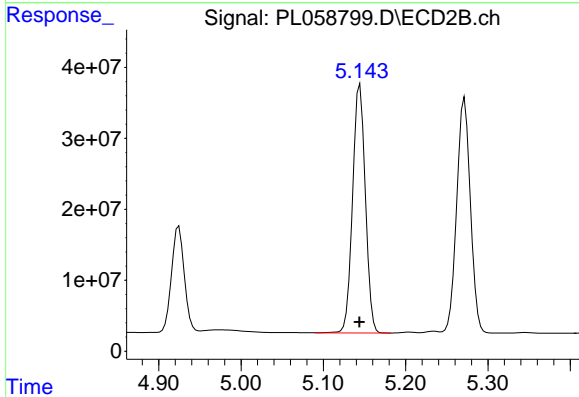
Conc: 96.53 ng/ml



#7 delta-BHC

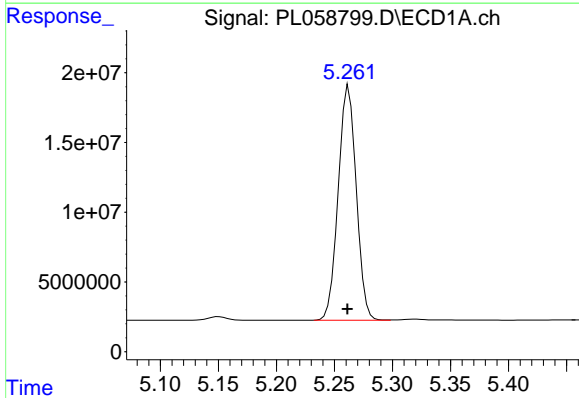
R.T.: 4.716 min
 Delta R.T.: 0.000 min
 Response: 226238598
 Conc: 102.50 ng/ml

Instrument :
 ECD_L
 ClientSampleId :



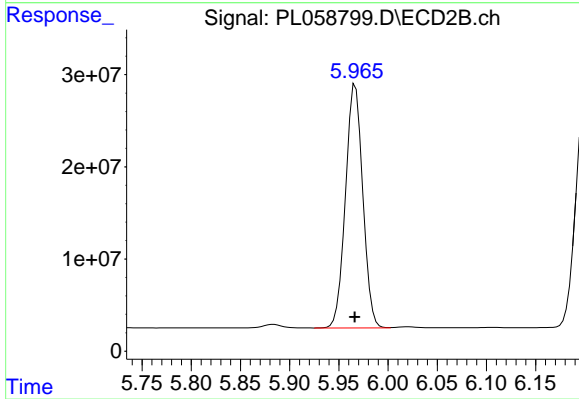
#7 delta-BHC

R.T.: 5.145 min
 Delta R.T.: 0.000 min
 Response: 376681999
 Conc: 99.93 ng/ml



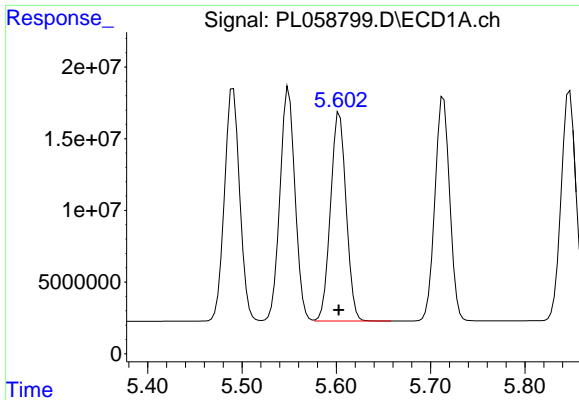
#8 Heptachlor epoxide

R.T.: 5.263 min
 Delta R.T.: 0.001 min
 Response: 181992603
 Conc: 97.77 ng/ml



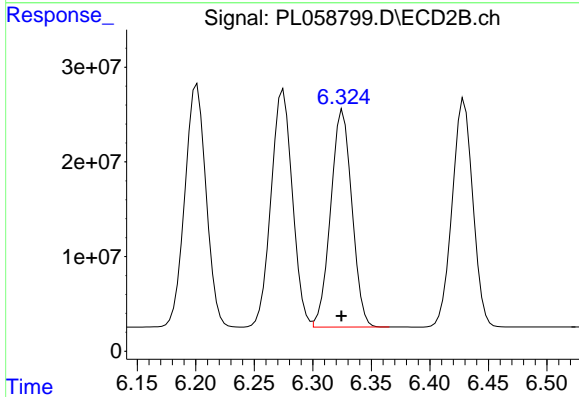
#8 Heptachlor epoxide

R.T.: 5.967 min
 Delta R.T.: 0.000 min
 Response: 323425644
 Conc: 97.08 ng/ml

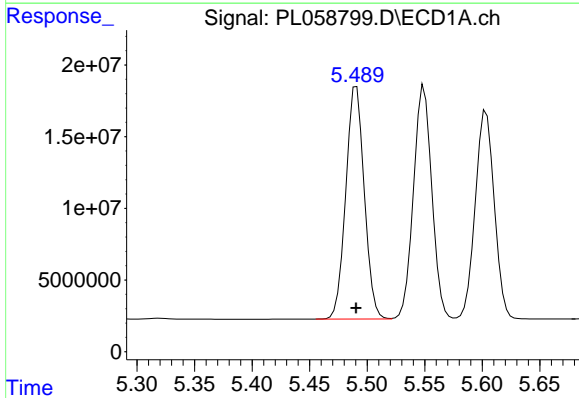


#9 Endosulfan I
 R.T.: 5.603 min
 Delta R.T.: 0.000 min
 Response: 167246755
 Conc: 97.49 ng/ml

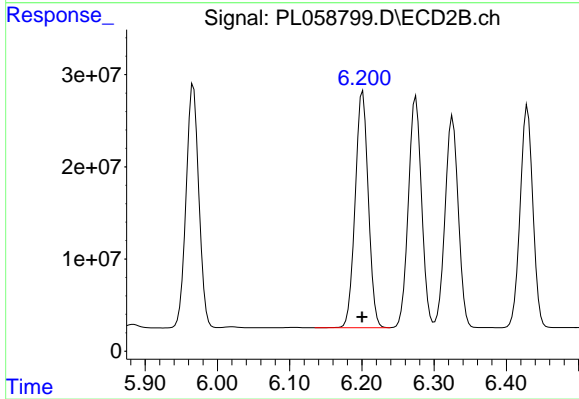
Instrument :
 ECD_L
 ClientSampled :



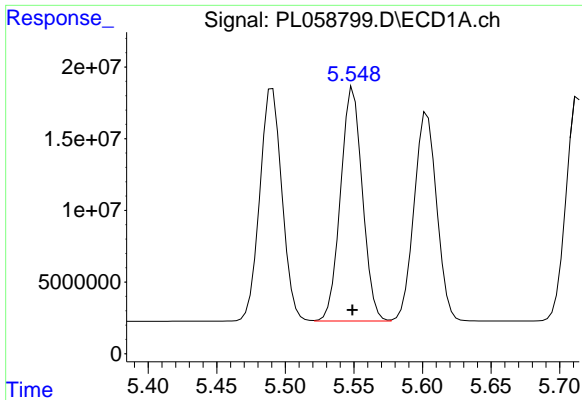
#9 Endosulfan I
 R.T.: 6.326 min
 Delta R.T.: 0.001 min
 Response: 289910460
 Conc: 96.99 ng/ml



#10 gamma-Chlordane
 R.T.: 5.491 min
 Delta R.T.: 0.000 min
 Response: 182295526
 Conc: 98.75 ng/ml

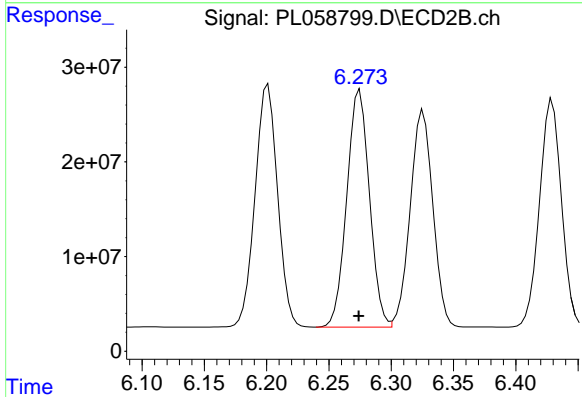


#10 gamma-Chlordane
 R.T.: 6.201 min
 Delta R.T.: 0.000 min
 Response: 324293402
 Conc: 97.20 ng/ml

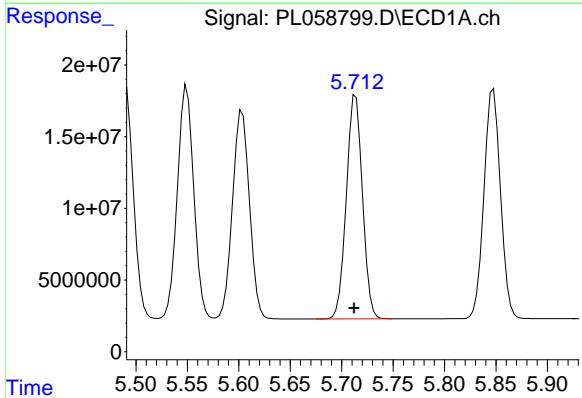


#11 alpha-Chlordane
 R.T.: 5.550 min
 Delta R.T.: 0.000 min
 Response: 180695296
 Conc: 97.99 ng/ml

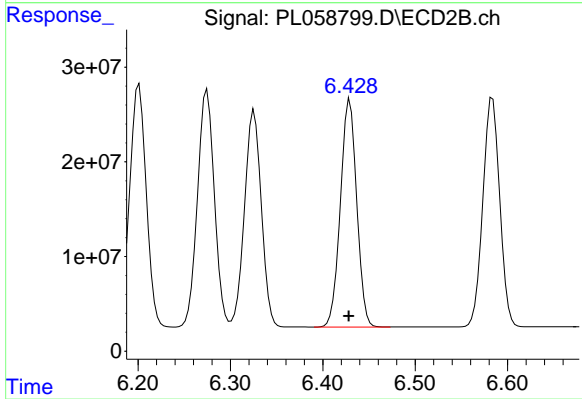
Instrument :
 ECD_L
 ClientSampleId :



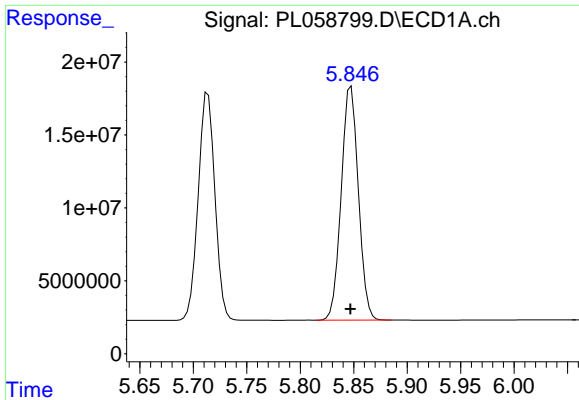
#11 alpha-Chlordane
 R.T.: 6.275 min
 Delta R.T.: 0.000 min
 Response: 318853964
 Conc: 96.44 ng/ml



#12 4,4'-DDE
 R.T.: 5.714 min
 Delta R.T.: 0.002 min
 Response: 170066297
 Conc: 101.38 ng/ml

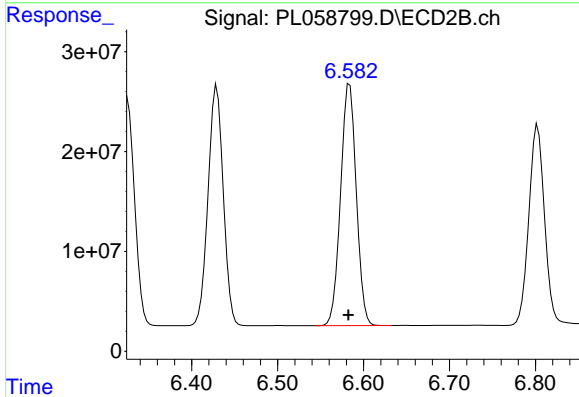


#12 4,4'-DDE
 R.T.: 6.429 min
 Delta R.T.: 0.001 min
 Response: 295433707
 Conc: 99.75 ng/ml

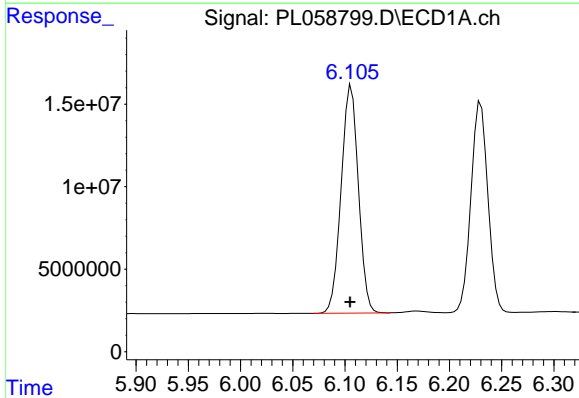


#13 Dieldrin
 R.T.: 5.848 min
 Delta R.T.: 0.000 min
 Response: 178957460
 Conc: 100.08 ng/ml

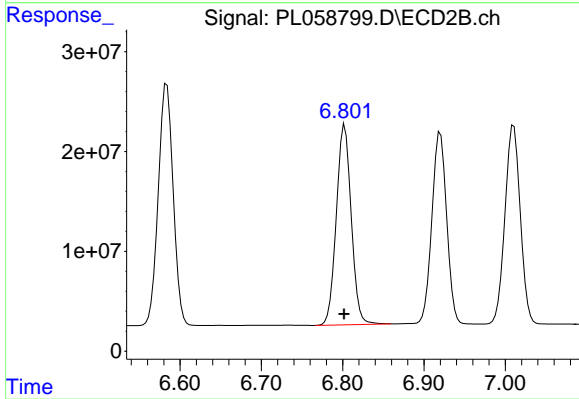
Instrument :
 ECD_L
 ClientSampled :



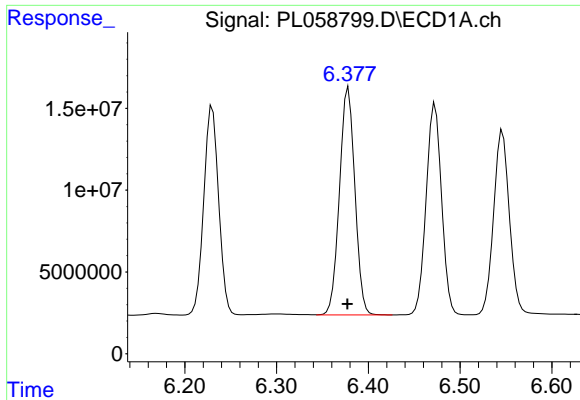
#13 Dieldrin
 R.T.: 6.584 min
 Delta R.T.: 0.001 min
 Response: 307741187
 Conc: 99.24 ng/ml



#14 Endrin
 R.T.: 6.106 min
 Delta R.T.: 0.001 min
 Response: 158459422
 Conc: 99.26 ng/ml



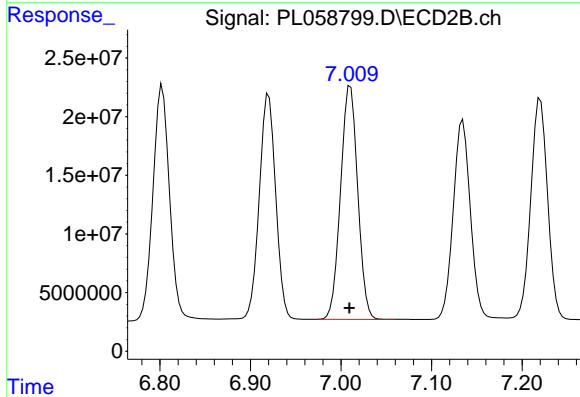
#14 Endrin
 R.T.: 6.803 min
 Delta R.T.: 0.000 min
 Response: 255194011
 Conc: 99.86 ng/ml



#15 Endosulfan II

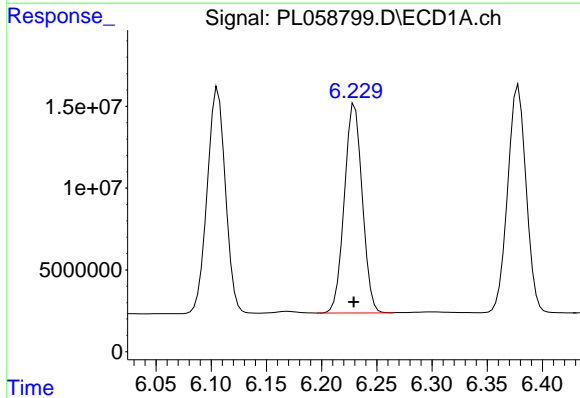
R.T.: 6.378 min
Delta R.T.: 0.001 min
Response: 161990292
Conc: 97.18 ng/ml

Instrument :
ECD_L
ClientSampleId :



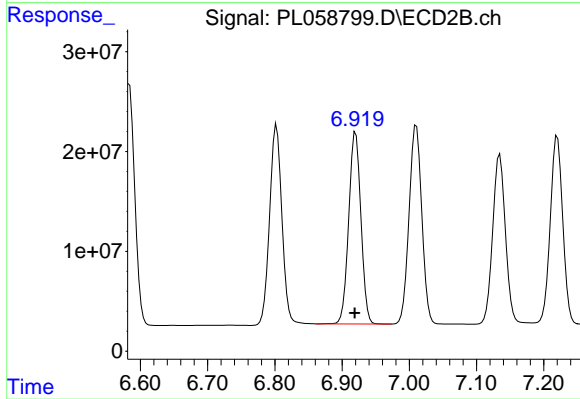
#15 Endosulfan II

R.T.: 7.010 min
Delta R.T.: 0.001 min
Response: 262616242
Conc: 96.25 ng/ml



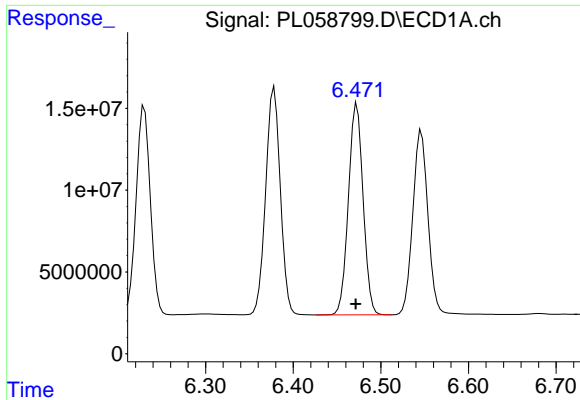
#16 4,4'-DDD

R.T.: 6.230 min
Delta R.T.: 0.000 min
Response: 144459086
Conc: 100.25 ng/ml



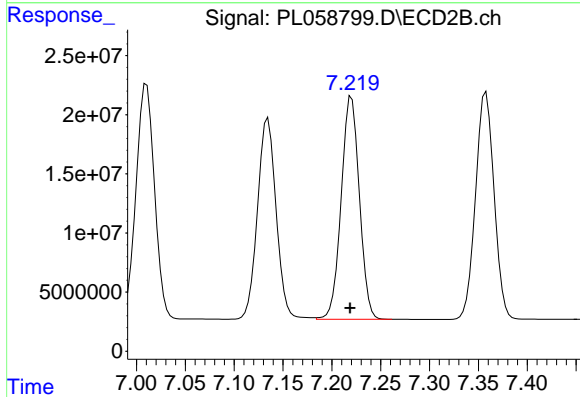
#16 4,4'-DDD

R.T.: 6.920 min
Delta R.T.: 0.001 min
Response: 242256545
Conc: 99.45 ng/ml

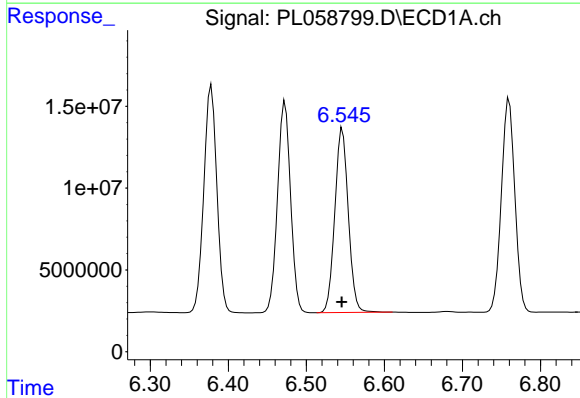


#17 4,4'-DDT
 R.T.: 6.473 min
 Delta R.T.: 0.001 min
 Response: 150511329
 Conc: 100.84 ng/ml

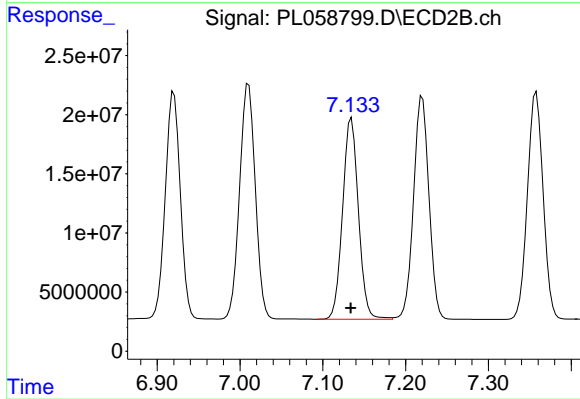
Instrument :
 ECD_L
 ClientSampled :



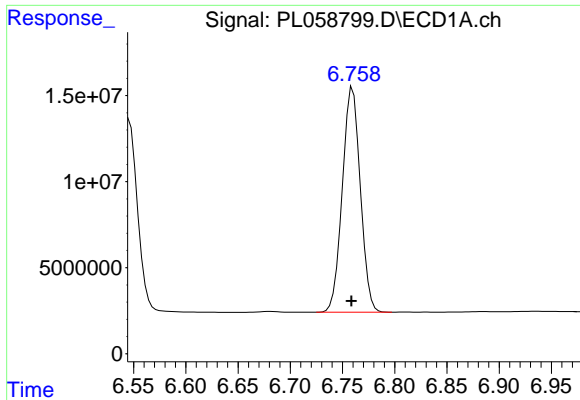
#17 4,4'-DDT
 R.T.: 7.220 min
 Delta R.T.: 0.001 min
 Response: 244370599
 Conc: 99.51 ng/ml



#18 Endrin aldehyde
 R.T.: 6.546 min
 Delta R.T.: 0.001 min
 Response: 135265396
 Conc: 95.85 ng/ml

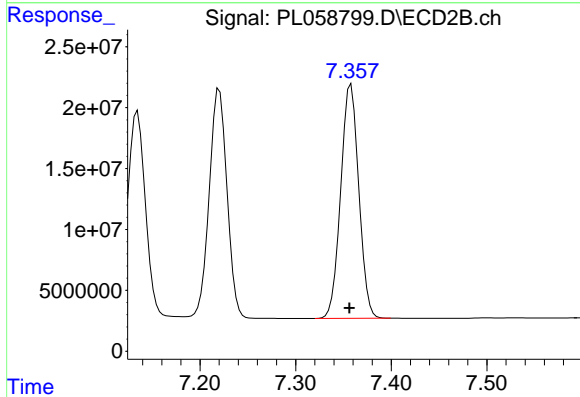


#18 Endrin aldehyde
 R.T.: 7.135 min
 Delta R.T.: 0.000 min
 Response: 225891990
 Conc: 95.30 ng/ml

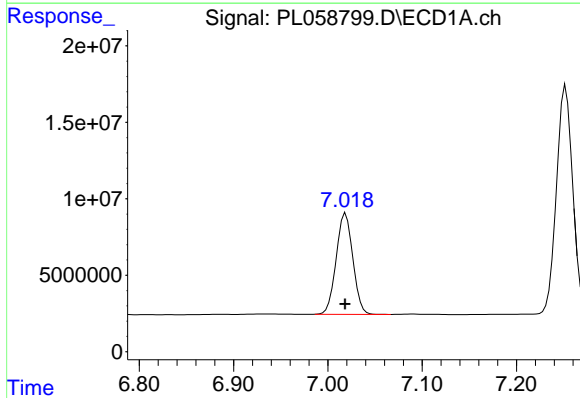


#19 Endosulfan Sulfate
 R.T.: 6.760 min
 Delta R.T.: 0.001 min
 Response: 156465179
 Conc: 96.20 ng/ml

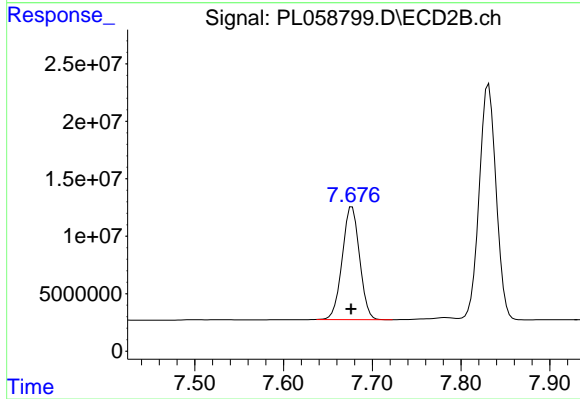
Instrument :
 ECD_L
 ClientSampleId :



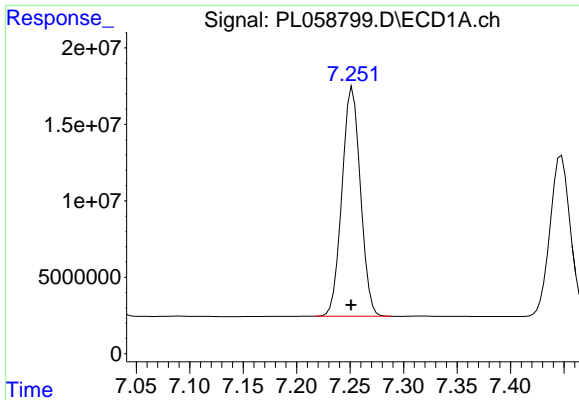
#19 Endosulfan Sulfate
 R.T.: 7.358 min
 Delta R.T.: 0.002 min
 Response: 253027363
 Conc: 95.81 ng/ml



#20 Methoxychlor
 R.T.: 7.019 min
 Delta R.T.: 0.000 min
 Response: 81115887
 Conc: 93.93 ng/ml



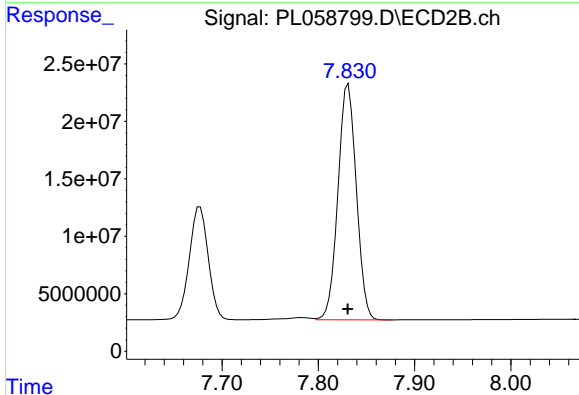
#20 Methoxychlor
 R.T.: 7.677 min
 Delta R.T.: 0.001 min
 Response: 133188047
 Conc: 94.13 ng/ml



#21 Endrin ketone

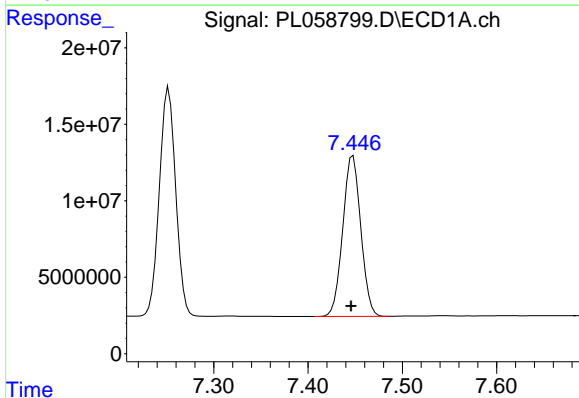
R.T.: 7.252 min
Delta R.T.: 0.002 min
Response: 180174909
Conc: 96.22 ng/ml

Instrument :
ECD_L
ClientSampled :



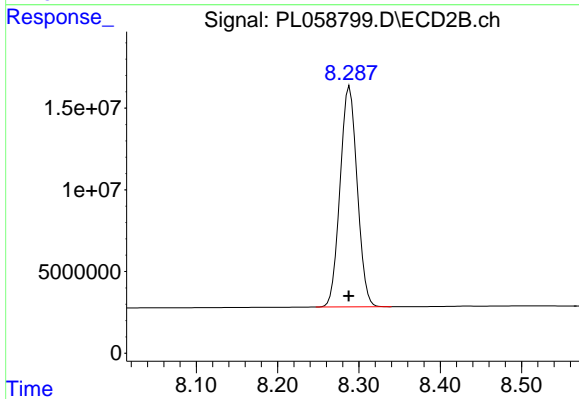
#21 Endrin ketone

R.T.: 7.831 min
Delta R.T.: 0.000 min
Response: 271106880
Conc: 97.06 ng/ml



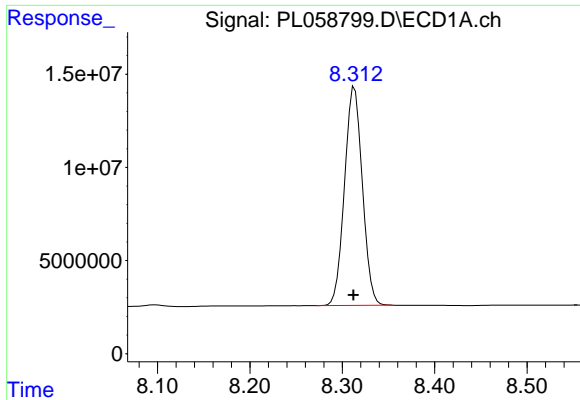
#22 Mirex

R.T.: 7.448 min
Delta R.T.: 0.002 min
Response: 139838362
Conc: 92.22 ng/ml



#22 Mirex

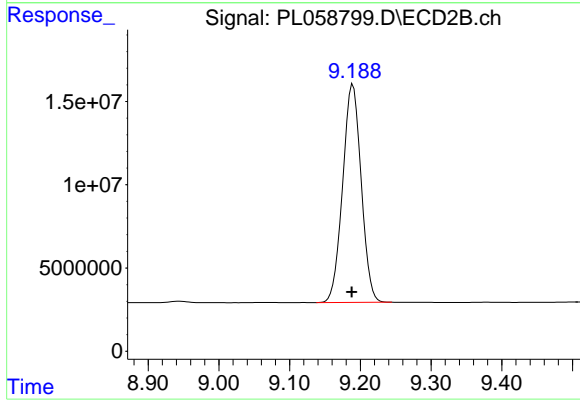
R.T.: 8.289 min
Delta R.T.: 0.000 min
Response: 197129164
Conc: 91.38 ng/ml



#28 Decachlorobiphenyl

R.T.: 8.313 min
Delta R.T.: 0.001 min
Response: 157292442
Conc: 94.29 ng/ml

Instrument :
ECD_L
ClientSampleId :



#28 Decachlorobiphenyl

R.T.: 9.190 min
Delta R.T.: 0.002 min
Response: 238407615
Conc: 91.99 ng/ml