

Data Path : Z:\pestpcbsrv\HPCHEM1\ECD_L\Data\PL052119\
 Data File : PL048794.D
 Signal(s) : Signal #1: ECD1A.ch Signal #2: ECD2B.ch
 Acq On : 21 May 2019 22:39
 Operator : SM\AJ
 Sample : PB119930BS
 Misc :
 ALS Vial : 28 Sample Multiplier: 1

Instrument :
 ECD_L
 ClientSampleId :
 PB119930BS

Integration File signal 1: autoint1.e
 Integration File signal 2: autoint2.e
 Quant Time: May 22 01:16:36 2019
 Quant Method : Z:\pestpcbsrv\HPCHEM1\ECD_L\methods\PL050119.M
 Quant Title : GC Extractables
 QLast Update : Thu May 02 09:36:55 2019
 Response via : Initial Calibration
 Integrator: ChemStation

Volume Inj. : 1 µl
 Signal #1 Phase : ZB-MR2 Signal #2 Phase: ZB-MR1
 Signal #1 Info : 30M x 0.32mm x0.2 Signal #2 Info : 30M x 0.32mm x0.5µm

Compound	RT#1	RT#2	Resp#1	Resp#2	ng/ml	ng/ml

System Monitoring Compounds						
1) SA Tetrachlo...	3.326	3.938	164.6E6	46165352	16.991	18.534
28) SA Decachlor...	7.993	8.974	188.7E6	54167885	18.769	20.408
Target Compounds						
2) A alpha-BHC	3.754	4.327	785.1E6	190.7E6	50.757	54.305
3) MA gamma-BHC...	4.029	4.610	729.3E6	176.1E6	51.327	53.908
4) MA Heptachlor	4.314	5.113	743.5E6	180.5E6	50.534	52.136
5) MB Aldrin	4.553	5.416	713.3E6	166.4E6	52.060	53.727
6) B beta-BHC	4.283	4.785	297.7E6	80395729	50.451	51.668
7) B delta-BHC	4.477	4.999	706.3E6	165.9E6	50.028	58.672
8) B Heptachlor...	4.990	5.803	653.0E6	158.0E6	50.684	54.184
9) A Endosulfan I	5.320	6.158	615.3E6	148.1E6	51.148	52.369
10) B gamma-Chl...	5.212	6.036	672.1E6	160.7E6	50.335	52.196
11) B alpha-Chl...	5.268	6.108	652.5E6	158.8E6	49.907	51.751
12) B 4,4'-DDE	5.436	6.268	630.5E6	146.7E6	49.705	53.121
13) MA Dieldrin	5.559	6.414	659.5E6	154.2E6	50.653	52.561
14) MA Endrin	5.812	6.631	521.2E6	118.5E6	42.816	45.456
15) B Endosulfa...	6.087	6.843	567.4E6	139.2E6	49.163	51.638
16) A 4,4'-DDD	5.947	6.758	496.5E6	120.8E6	51.005	53.821
17) MA 4,4'-DDT	6.181	7.056	454.4E6	112.7E6	45.232	48.023
18) B Endrin al...	6.254	6.966	483.7E6	123.6E6	49.775	52.730
19) B Endosulfa...	6.466	7.189	514.9E6	130.8E6	47.976	50.547
20) A Methoxychlor	6.726	7.516	228.0E6	63278282	41.883	46.352
21) B Endrin ke...	6.947	7.658	607.8E6	147.5E6	52.150	56.454
22) Mirex	7.122	8.107	560.7E6	151.7E6	62.553	71.940
24) Chlordane-2	0.000	5.416f	0	166.4E6	N.D.	1286.321 #
25) Chlordane-3	5.212	6.036	672.1E6	160.7E6	426.847	366.687
26) Chlordane-4	5.268	6.108	652.5E6	158.8E6	449.405	302.681 #
27) Chlordane-5	6.087	0.000	567.4E6	0	1208.311	N.D. #

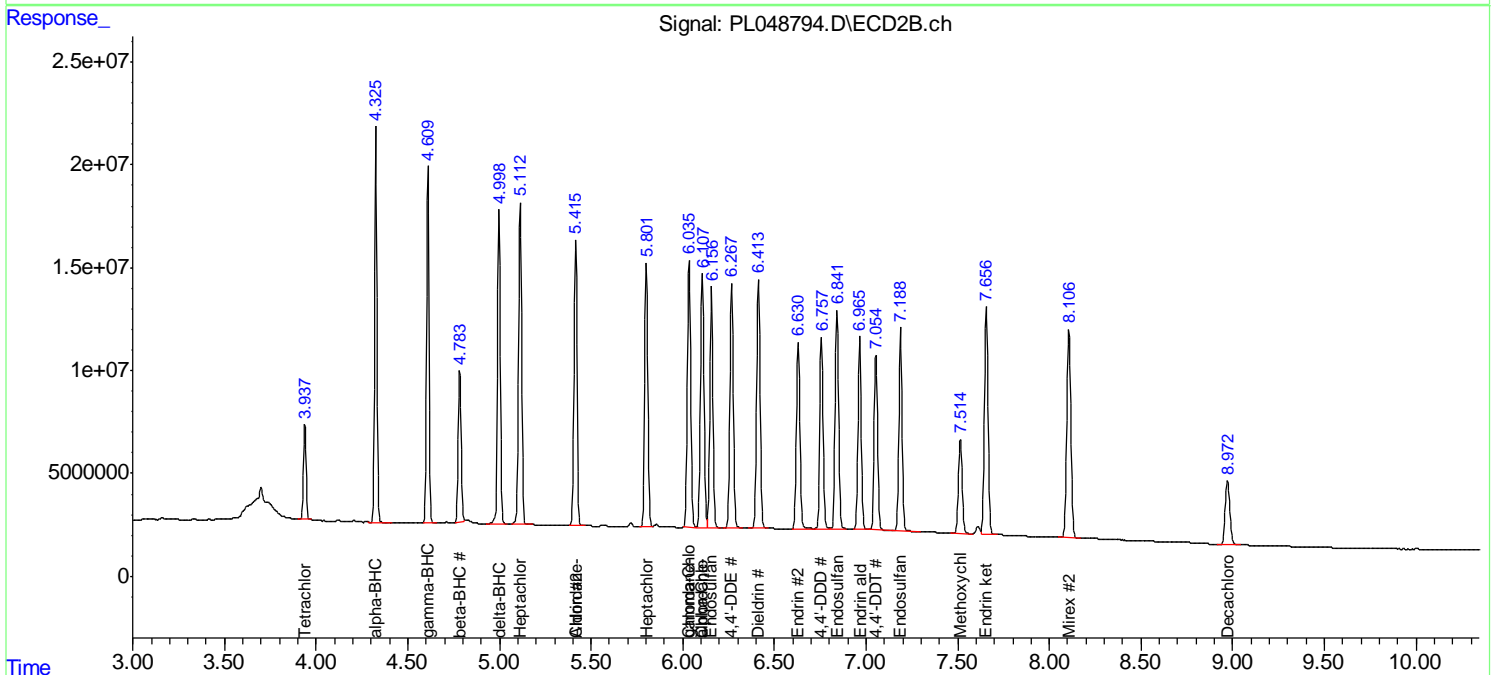
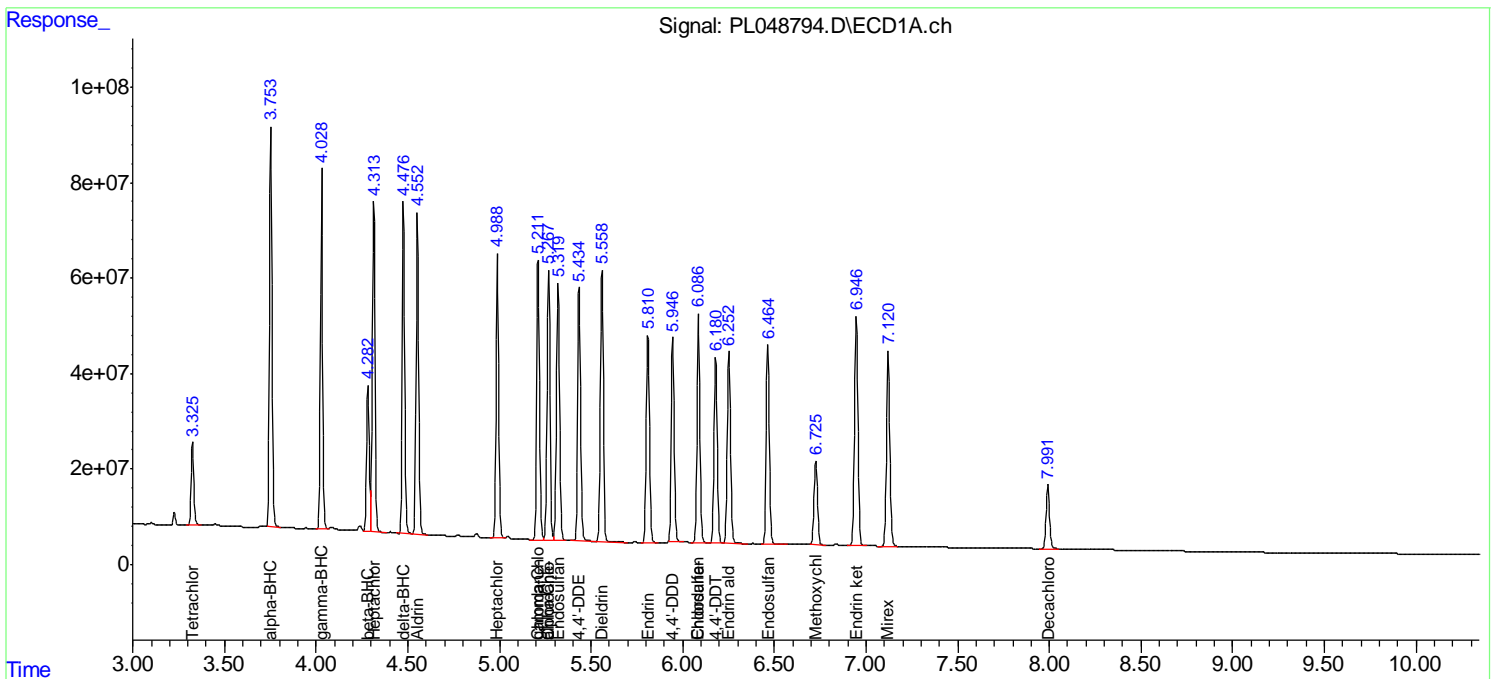
(f)=RT Delta > 1/2 Window (#)=Amounts differ by > 25% (m)=manual int.

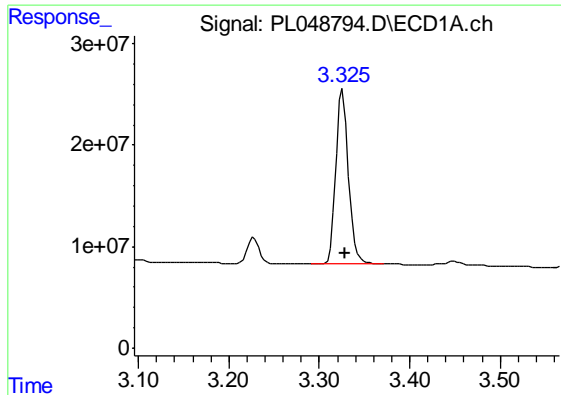
Data Path : Z:\pestpcbsrv\HPCHEM1\ECD_L\Data\PL052119\
 Data File : PL048794.D
 Signal(s) : Signal #1: ECD1A.ch Signal #2: ECD2B.ch
 Acq On : 21 May 2019 22:39
 Operator : SM\AJ
 Sample : PB119930BS
 Misc :
 ALS Vial : 28 Sample Multiplier: 1

Instrument :
 ECD_L
 ClientSampleId :
 PB119930BS

Integration File signal 1: autoint1.e
 Integration File signal 2: autoint2.e
 Quant Time: May 22 01:16:36 2019
 Quant Method : Z:\pestpcbsrv\HPCHEM1\ECD_L\methods\PL050119.M
 Quant Title : GC Extractables
 QLast Update : Thu May 02 09:36:55 2019
 Response via : Initial Calibration
 Integrator: ChemStation

Volume Inj. : 1 µl
 Signal #1 Phase : ZB-MR2 Signal #2 Phase: ZB-MR1
 Signal #1 Info : 30M x 0.32mm x0.2 Signal #2 Info : 30M x 0.32mm x0.5µm

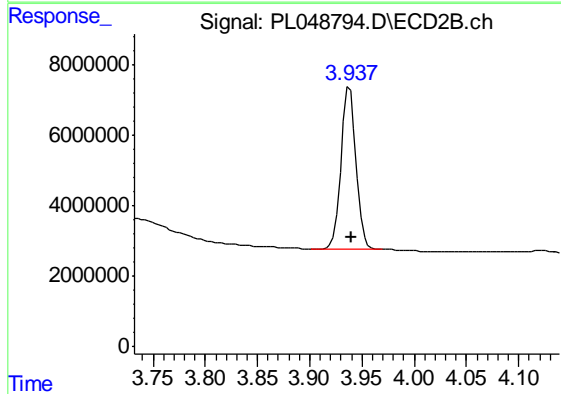




#1 Tetrachloro-m-xylene

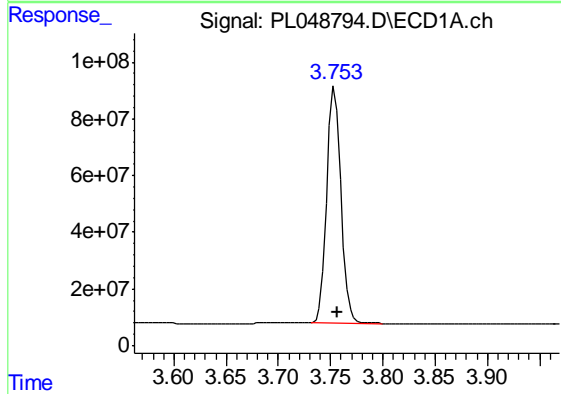
R.T.: 3.326 min
 Delta R.T.: -0.002 min
 Response: 164586957
 Conc: 16.99 ng/ml

Instrument :
 ECD_L
 ClientSampleId :
 PB119930BS



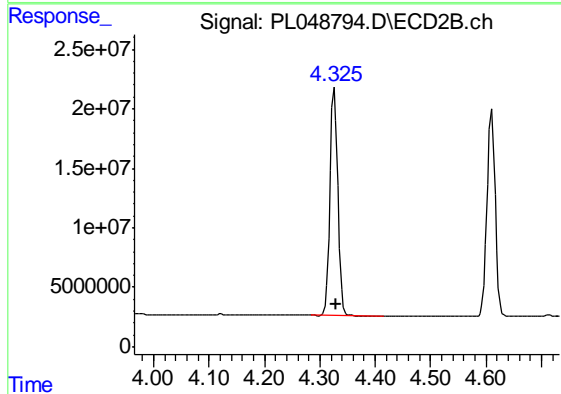
#1 Tetrachloro-m-xylene

R.T.: 3.938 min
 Delta R.T.: -0.001 min
 Response: 46165352
 Conc: 18.53 ng/ml



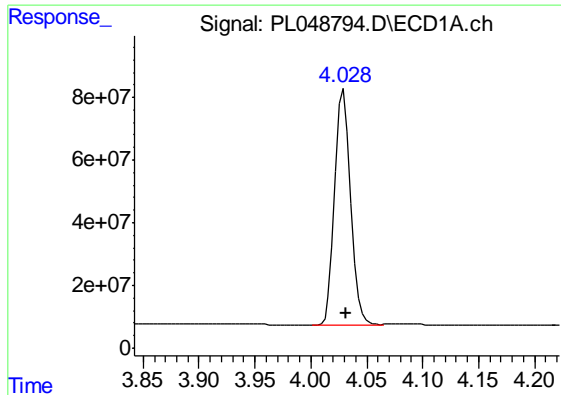
#2 alpha-BHC

R.T.: 3.754 min
 Delta R.T.: -0.002 min
 Response: 785087770
 Conc: 50.76 ng/ml



#2 alpha-BHC

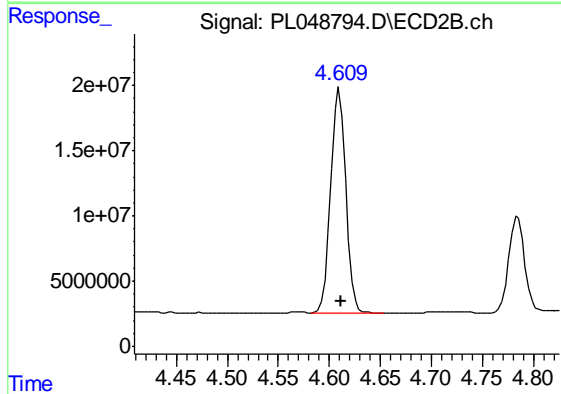
R.T.: 4.327 min
 Delta R.T.: -0.002 min
 Response: 190719588
 Conc: 54.31 ng/ml



#3 gamma-BHC (Lindane)

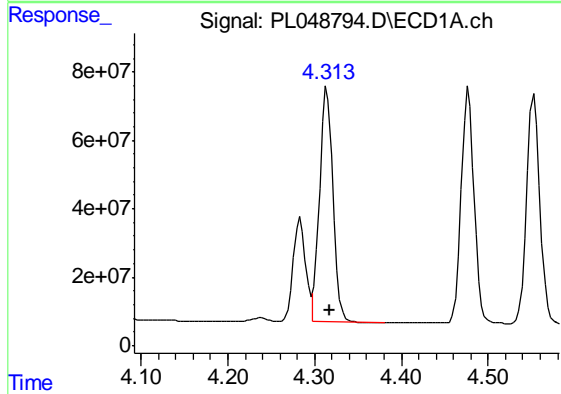
R.T.: 4.029 min
 Delta R.T.: -0.002 min
 Response: 729316544
 Conc: 51.33 ng/ml

Instrument :
 ECD_L
 ClientSampleId :
 PB119930BS



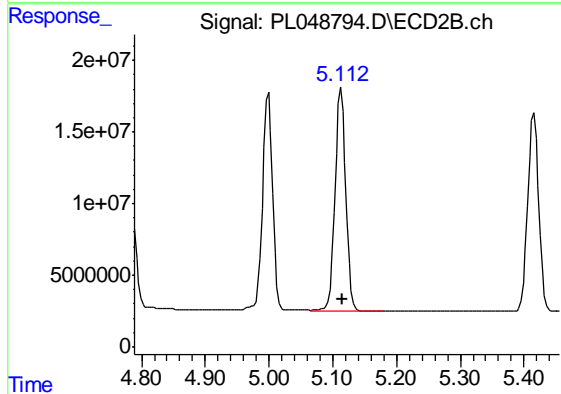
#3 gamma-BHC (Lindane)

R.T.: 4.610 min
 Delta R.T.: -0.002 min
 Response: 176073241
 Conc: 53.91 ng/ml



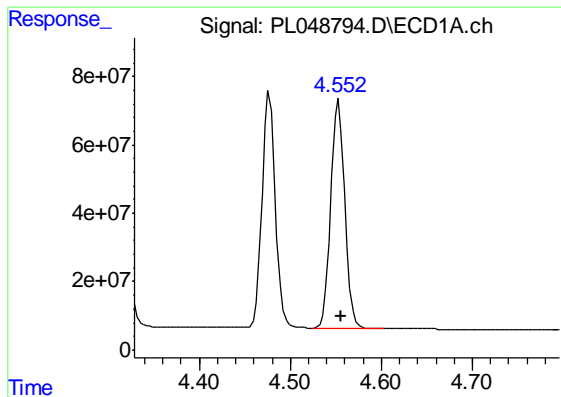
#4 Heptachlor

R.T.: 4.314 min
 Delta R.T.: -0.003 min
 Response: 743464115
 Conc: 50.53 ng/ml



#4 Heptachlor

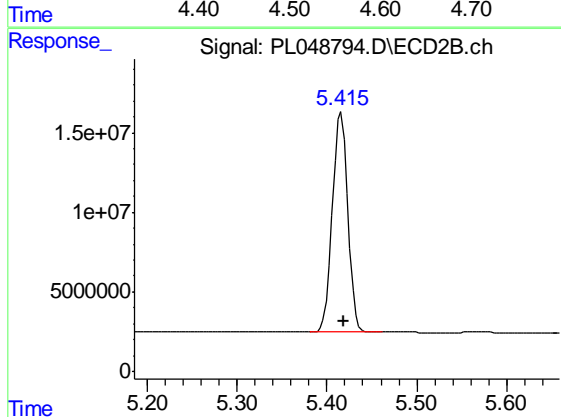
R.T.: 5.113 min
 Delta R.T.: -0.002 min
 Response: 180484091
 Conc: 52.14 ng/ml



#5 Aldrin

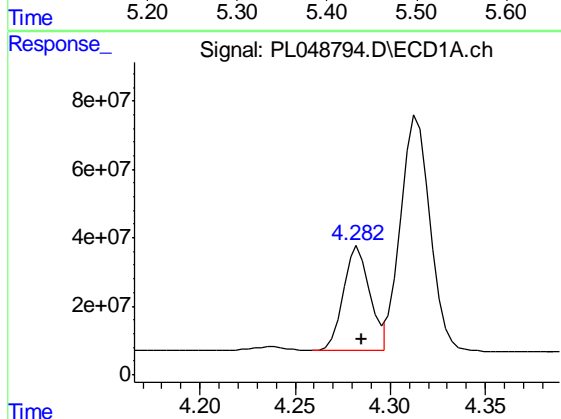
R.T.: 4.553 min
 Delta R.T.: -0.002 min
 Response: 713299979
 Conc: 52.06 ng/ml

Instrument :
 ECD_L
 ClientSampleId :
 PB119930BS



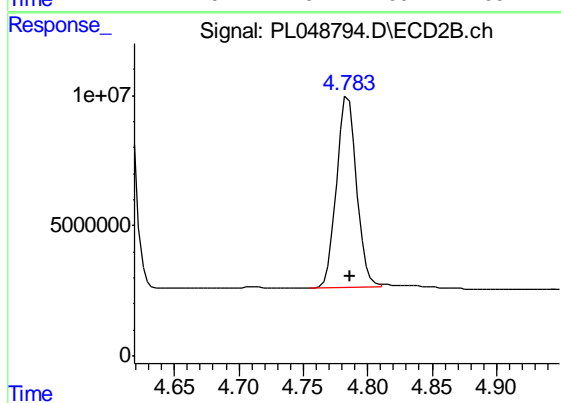
#5 Aldrin

R.T.: 5.416 min
 Delta R.T.: -0.002 min
 Response: 166371163
 Conc: 53.73 ng/ml



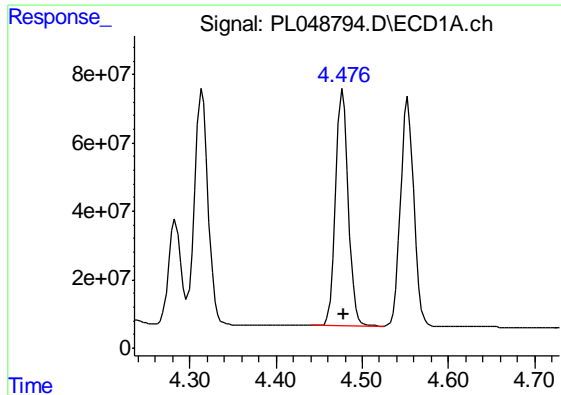
#6 beta-BHC

R.T.: 4.283 min
 Delta R.T.: -0.002 min
 Response: 297737970
 Conc: 50.45 ng/ml



#6 beta-BHC

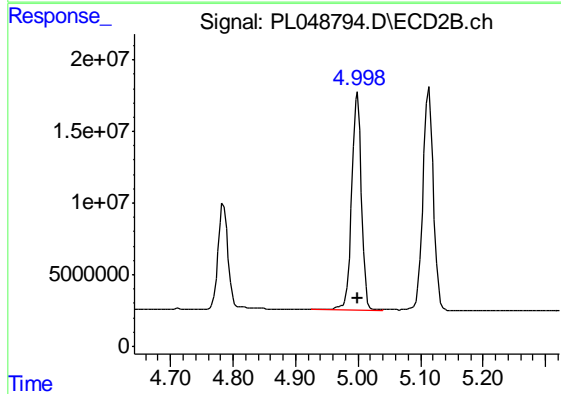
R.T.: 4.785 min
 Delta R.T.: -0.001 min
 Response: 80395729
 Conc: 51.67 ng/ml



#7 delta-BHC

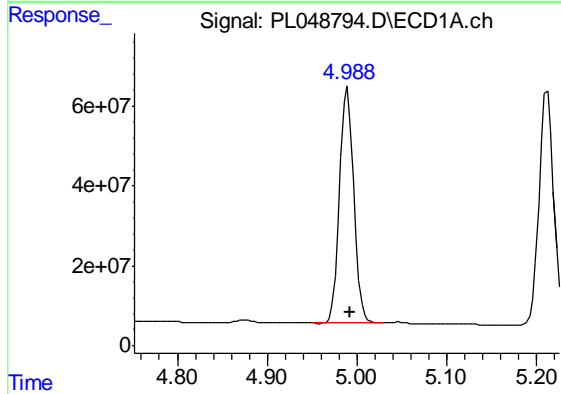
R.T.: 4.477 min
 Delta R.T.: -0.002 min
 Response: 706333104
 Conc: 50.03 ng/ml

Instrument :
 ECD_L
 ClientSampleId :
 PB119930BS



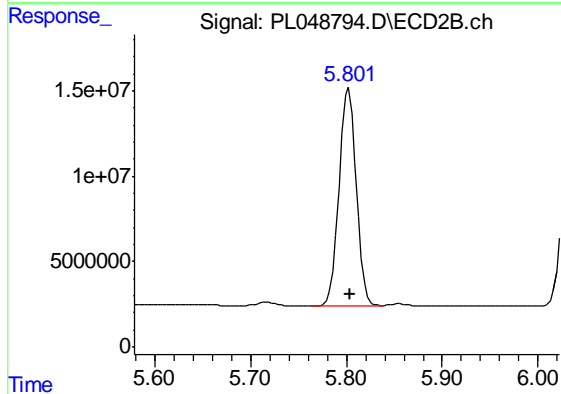
#7 delta-BHC

R.T.: 4.999 min
 Delta R.T.: 0.000 min
 Response: 165916599
 Conc: 58.67 ng/ml



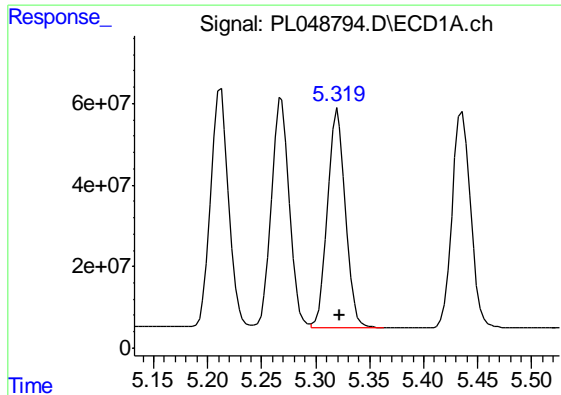
#8 Heptachlor epoxide

R.T.: 4.990 min
 Delta R.T.: -0.002 min
 Response: 653047793
 Conc: 50.68 ng/ml



#8 Heptachlor epoxide

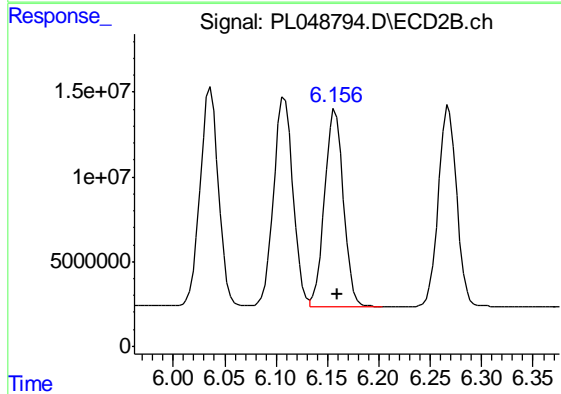
R.T.: 5.803 min
 Delta R.T.: -0.002 min
 Response: 158039869
 Conc: 54.18 ng/ml



#9 Endosulfan I

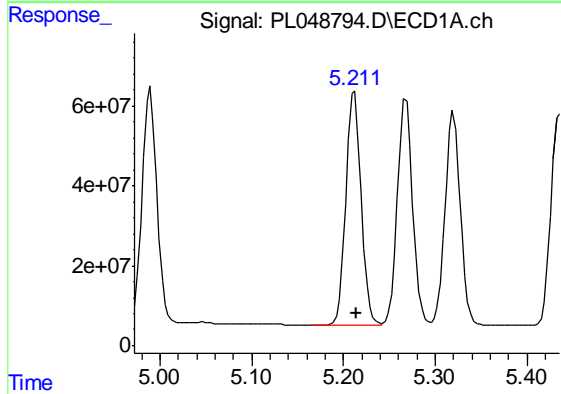
R.T.: 5.320 min
 Delta R.T.: -0.002 min
 Response: 615309173
 Conc: 51.15 ng/ml

Instrument :
 ECD_L
 ClientSampleId :
 PB119930BS



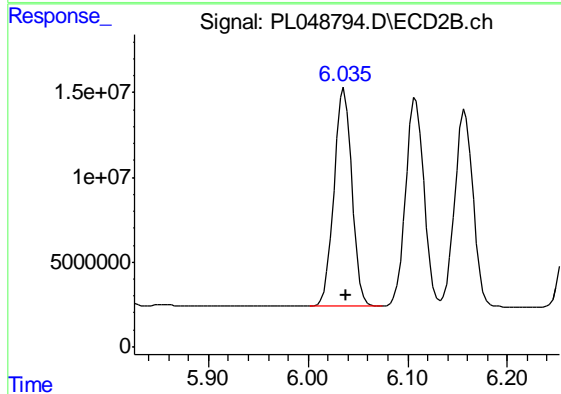
#9 Endosulfan I

R.T.: 6.158 min
 Delta R.T.: -0.002 min
 Response: 148072456
 Conc: 52.37 ng/ml



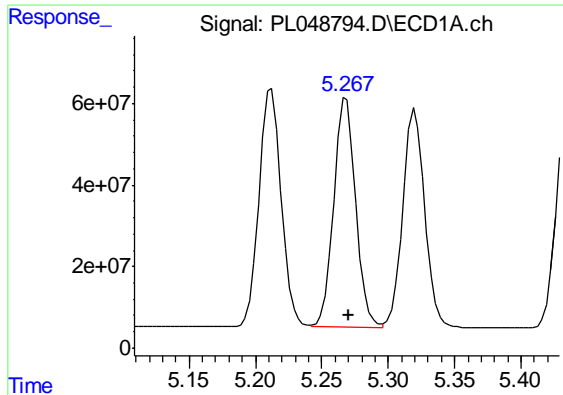
#10 gamma-Chlordane

R.T.: 5.212 min
 Delta R.T.: -0.003 min
 Response: 672094095
 Conc: 50.34 ng/ml



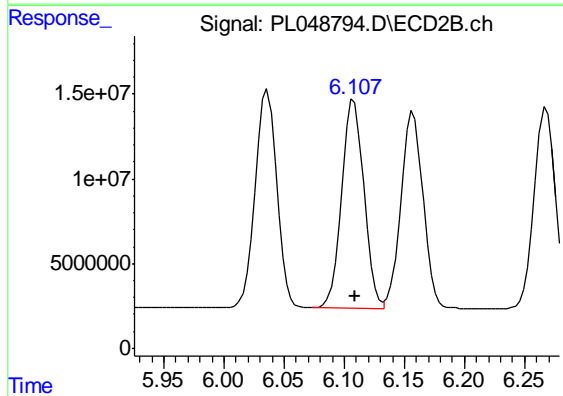
#10 gamma-Chlordane

R.T.: 6.036 min
 Delta R.T.: -0.002 min
 Response: 160693619
 Conc: 52.20 ng/ml

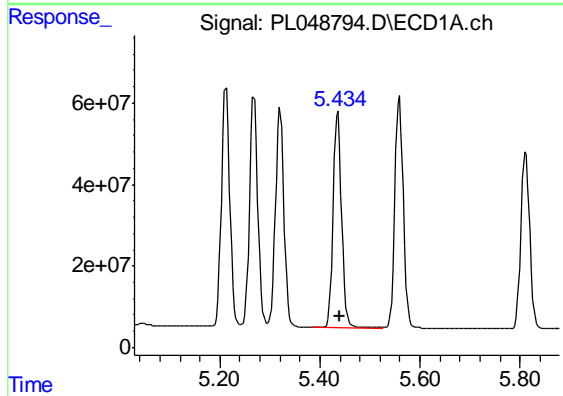


#11 alpha-Chlordane
 R.T.: 5.268 min
 Delta R.T.: -0.002 min
 Response: 652457037
 Conc: 49.91 ng/ml

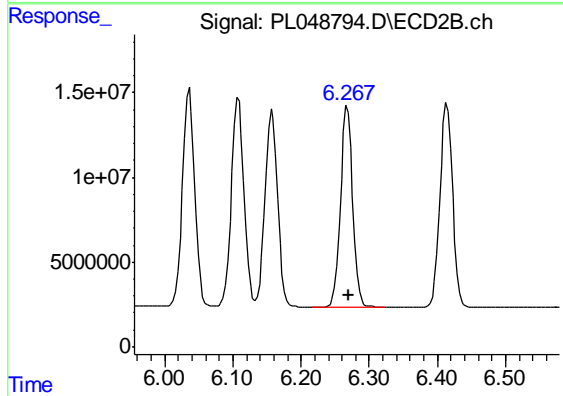
Instrument :
 ECD_L
 ClientSampled :
 PB119930BS



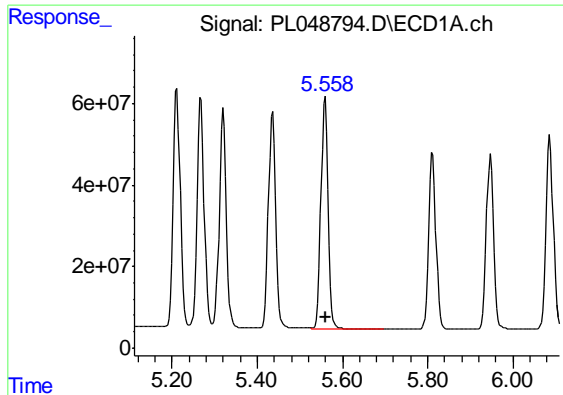
#11 alpha-Chlordane
 R.T.: 6.108 min
 Delta R.T.: -0.001 min
 Response: 158786820
 Conc: 51.75 ng/ml



#12 4,4'-DDE
 R.T.: 5.436 min
 Delta R.T.: -0.003 min
 Response: 630523434
 Conc: 49.71 ng/ml



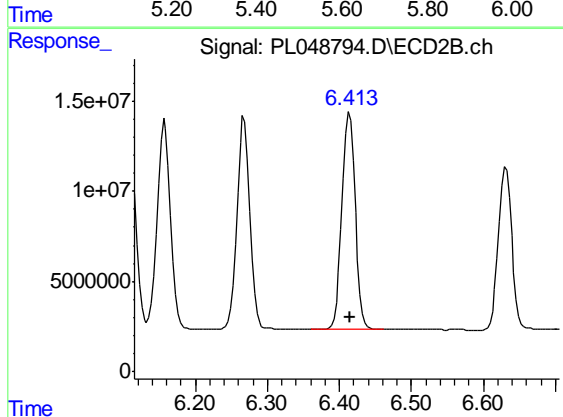
#12 4,4'-DDE
 R.T.: 6.268 min
 Delta R.T.: -0.002 min
 Response: 146662769
 Conc: 53.12 ng/ml



#13 Dieldrin

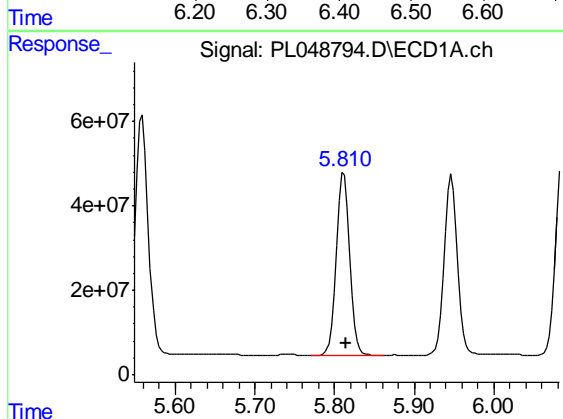
R.T.: 5.559 min
Delta R.T.: -0.003 min
Response: 659534882
Conc: 50.65 ng/ml

Instrument :
ECD_L
ClientSampled :
PB119930BS



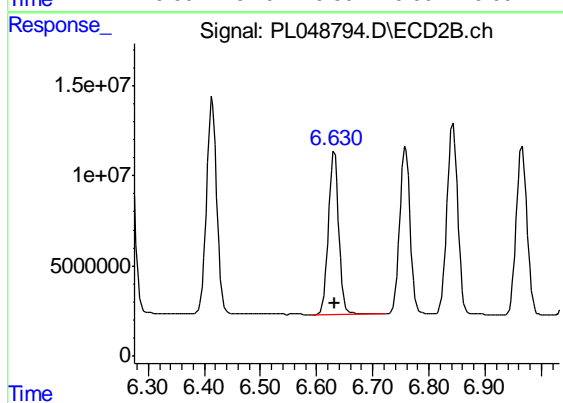
#13 Dieldrin

R.T.: 6.414 min
Delta R.T.: -0.001 min
Response: 154195708
Conc: 52.56 ng/ml



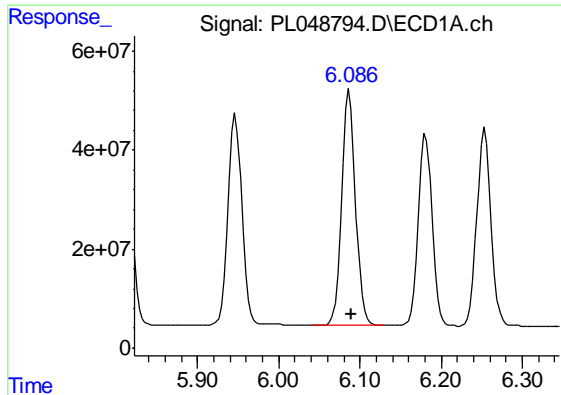
#14 Endrin

R.T.: 5.812 min
Delta R.T.: -0.003 min
Response: 521238186
Conc: 42.82 ng/ml



#14 Endrin

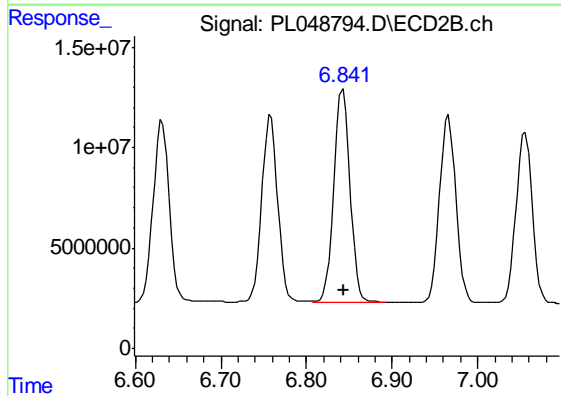
R.T.: 6.631 min
Delta R.T.: -0.001 min
Response: 118522269
Conc: 45.46 ng/ml



#15 Endosulfan II

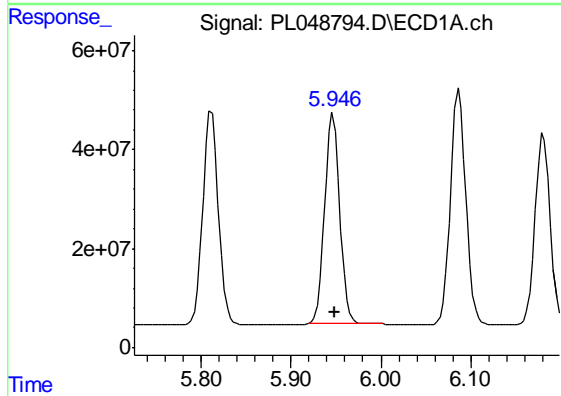
R.T.: 6.087 min
Delta R.T.: -0.002 min
Response: 567369780
Conc: 49.16 ng/ml

Instrument :
ECD_L
ClientSampleId :
PB119930BS



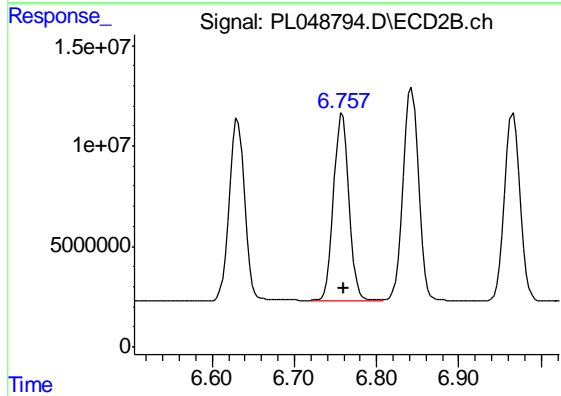
#15 Endosulfan II

R.T.: 6.843 min
Delta R.T.: 0.000 min
Response: 139248023
Conc: 51.64 ng/ml



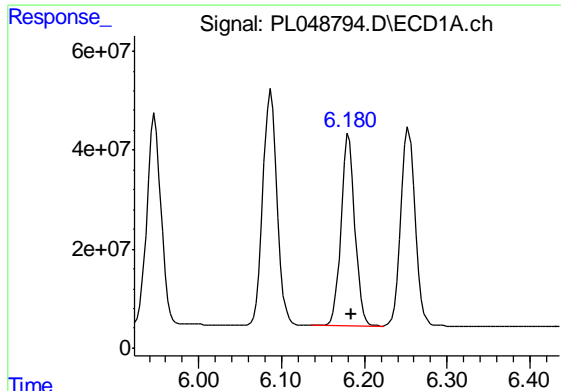
#16 4,4'-DDD

R.T.: 5.947 min
Delta R.T.: -0.002 min
Response: 496490788
Conc: 51.01 ng/ml



#16 4,4'-DDD

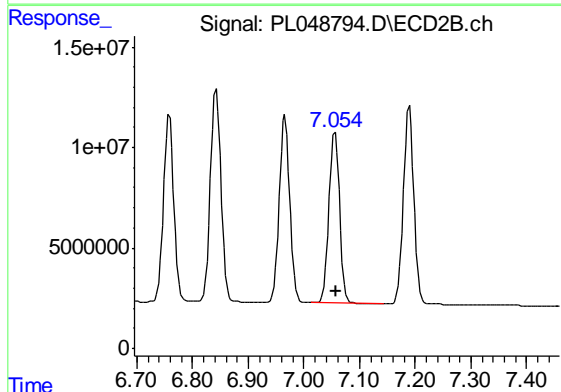
R.T.: 6.758 min
Delta R.T.: -0.001 min
Response: 120777327
Conc: 53.82 ng/ml



#17 4,4'-DDT

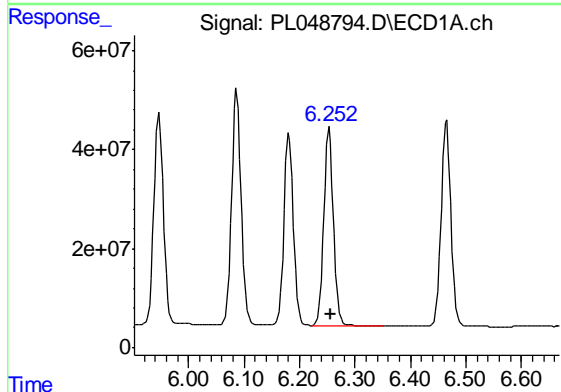
R.T.: 6.181 min
Delta R.T.: -0.003 min
Response: 454422778
Conc: 45.23 ng/ml

Instrument :
ECD_L
ClientSampled :
PB119930BS



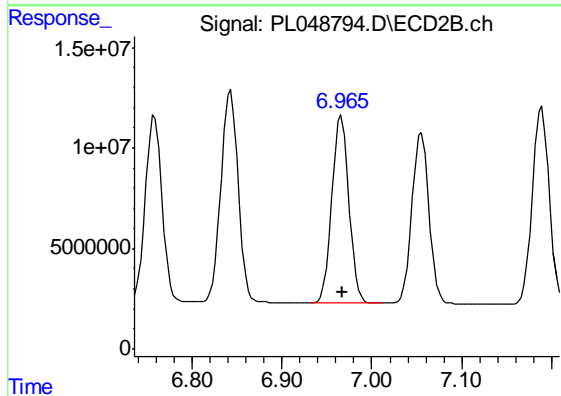
#17 4,4'-DDT

R.T.: 7.056 min
Delta R.T.: -0.001 min
Response: 112692385
Conc: 48.02 ng/ml



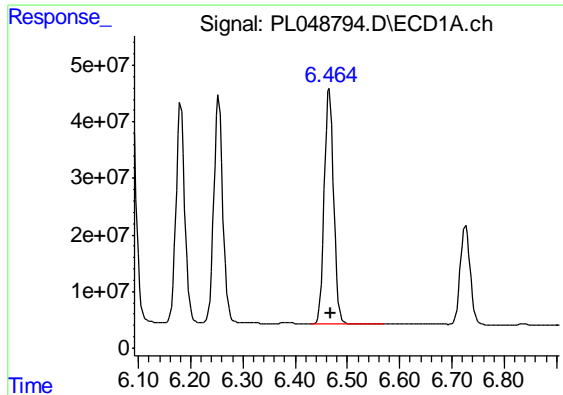
#18 Endrin aldehyde

R.T.: 6.254 min
Delta R.T.: -0.003 min
Response: 483727333
Conc: 49.77 ng/ml



#18 Endrin aldehyde

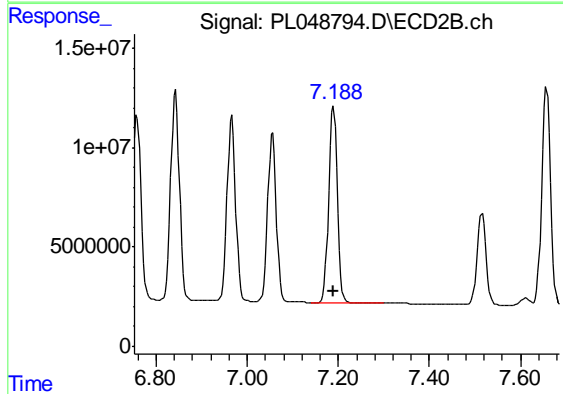
R.T.: 6.966 min
Delta R.T.: -0.001 min
Response: 123570488
Conc: 52.73 ng/ml



#19 Endosulfan Sulfate

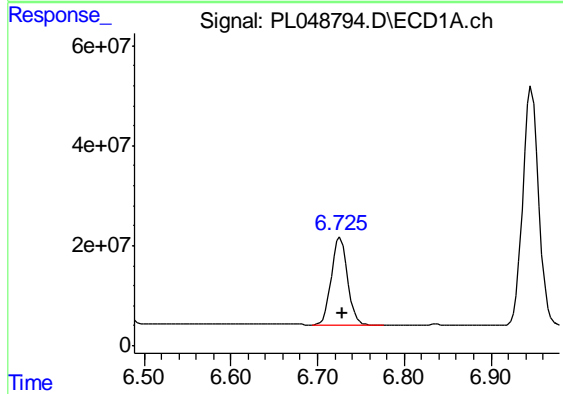
R.T.: 6.466 min
 Delta R.T.: -0.002 min
 Response: 514904574
 Conc: 47.98 ng/ml

Instrument :
 ECD_L
 ClientSampled :
 PB119930BS



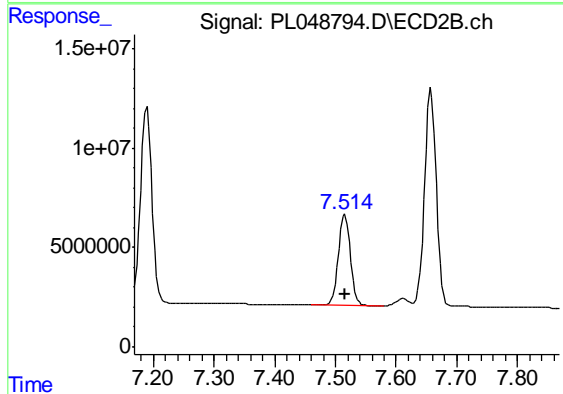
#19 Endosulfan Sulfate

R.T.: 7.189 min
 Delta R.T.: 0.000 min
 Response: 130826114
 Conc: 50.55 ng/ml



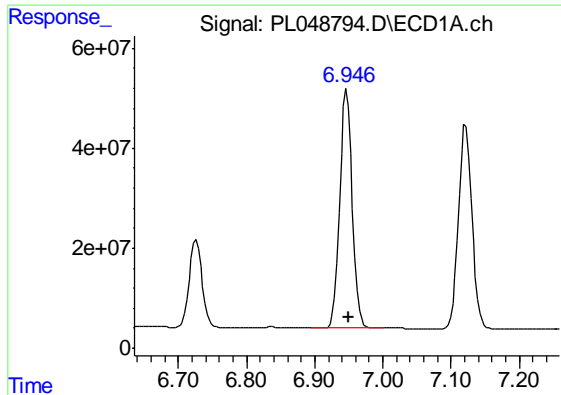
#20 Methoxychlor

R.T.: 6.726 min
 Delta R.T.: -0.003 min
 Response: 228044078
 Conc: 41.88 ng/ml



#20 Methoxychlor

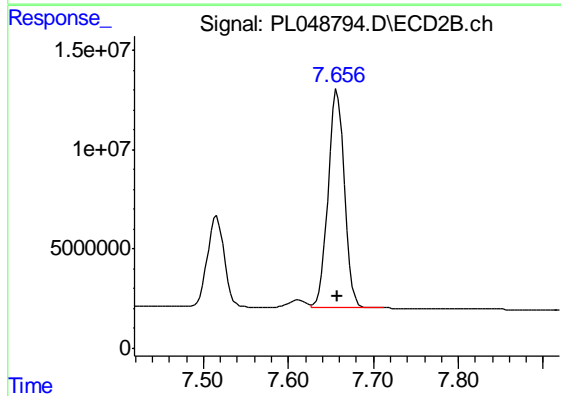
R.T.: 7.516 min
 Delta R.T.: 0.000 min
 Response: 63278282
 Conc: 46.35 ng/ml



#21 Endrin ketone

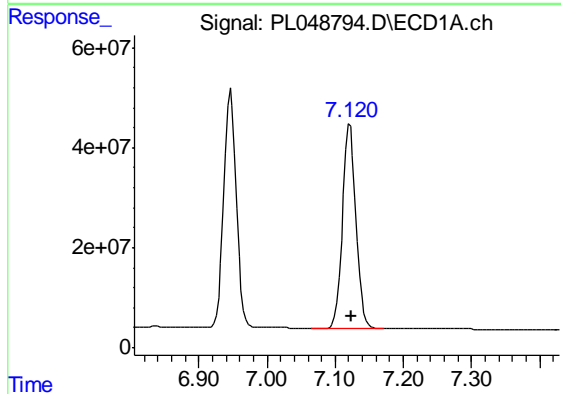
R.T.: 6.947 min
Delta R.T.: -0.003 min
Response: 607808404
Conc: 52.15 ng/ml

Instrument :
ECD_L
ClientSampleId :
PB119930BS



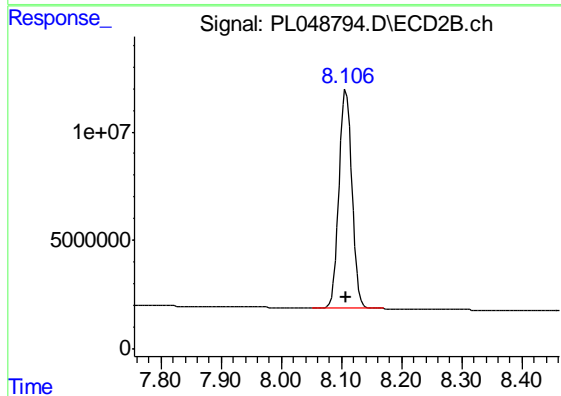
#21 Endrin ketone

R.T.: 7.658 min
Delta R.T.: 0.000 min
Response: 147501818
Conc: 56.45 ng/ml



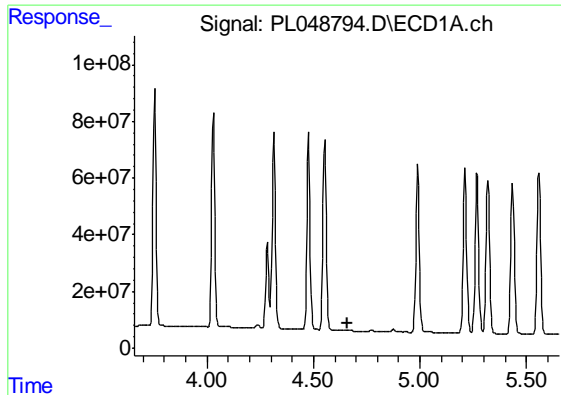
#22 Mirex

R.T.: 7.122 min
Delta R.T.: -0.002 min
Response: 560714223
Conc: 62.55 ng/ml



#22 Mirex

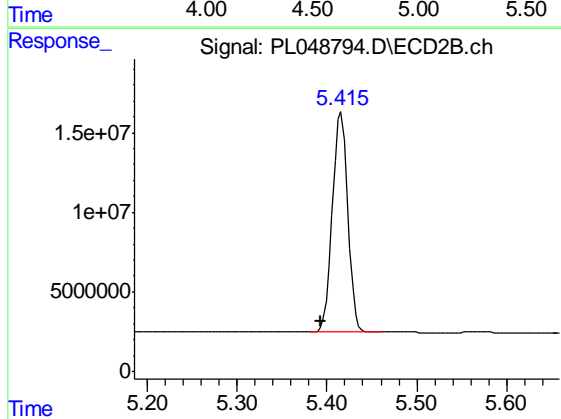
R.T.: 8.107 min
Delta R.T.: -0.001 min
Response: 151712644
Conc: 71.94 ng/ml



#24 Chlordane-2

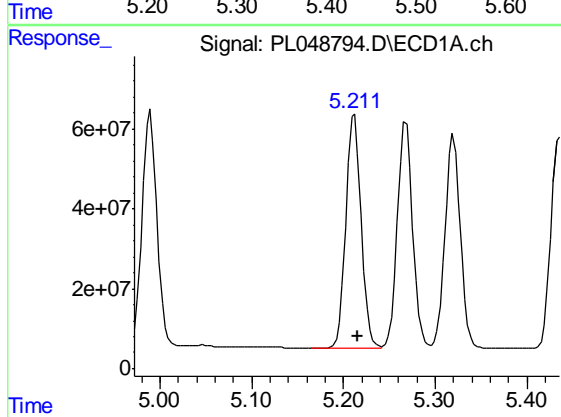
R.T.: 0.000 min
Exp R.T. : 4.658 min
Response: 0
Conc: N.D.

Instrument :
ECD_L
ClientSampled :
PB119930BS



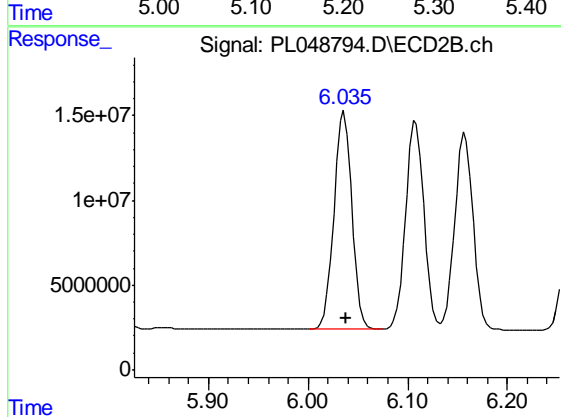
#24 Chlordane-2

R.T.: 5.416 min
Delta R.T.: 0.022 min
Response: 166371163
Conc: 1286.32 ng/ml



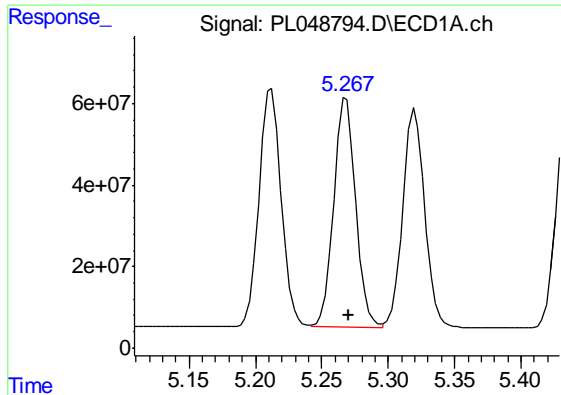
#25 Chlordane-3

R.T.: 5.212 min
Delta R.T.: -0.003 min
Response: 672094095
Conc: 426.85 ng/ml



#25 Chlordane-3

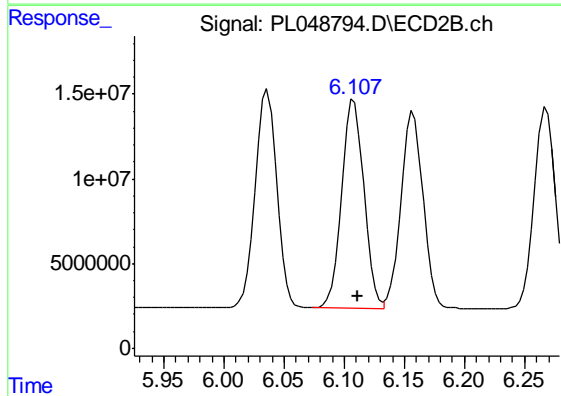
R.T.: 6.036 min
Delta R.T.: -0.002 min
Response: 160693619
Conc: 366.69 ng/ml



#26 Chlordane-4

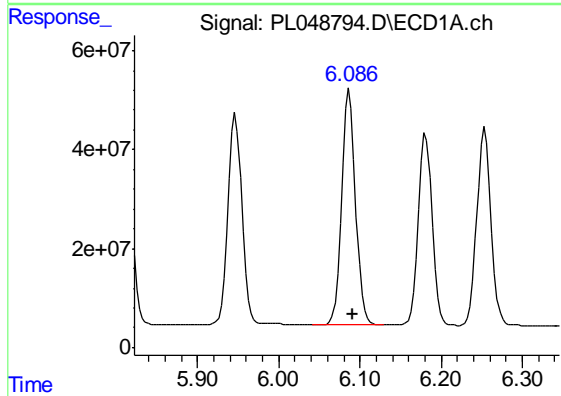
R.T.: 5.268 min
 Delta R.T.: -0.002 min
 Response: 652457037
 Conc: 449.41 ng/ml

Instrument :
 ECD_L
 ClientSampled :
 PB119930BS



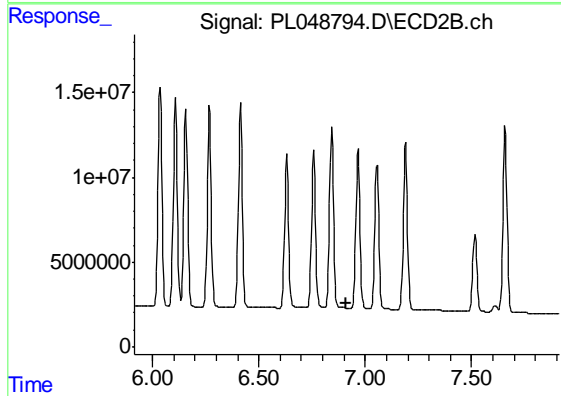
#26 Chlordane-4

R.T.: 6.108 min
 Delta R.T.: -0.003 min
 Response: 158786820
 Conc: 302.68 ng/ml



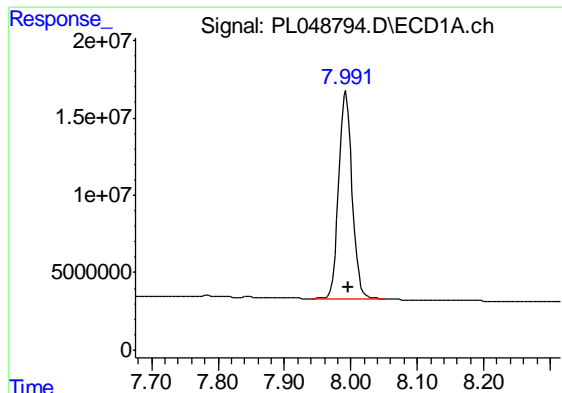
#27 Chlordane-5

R.T.: 6.087 min
 Delta R.T.: -0.004 min
 Response: 567369780
 Conc: 1208.31 ng/ml



#27 Chlordane-5

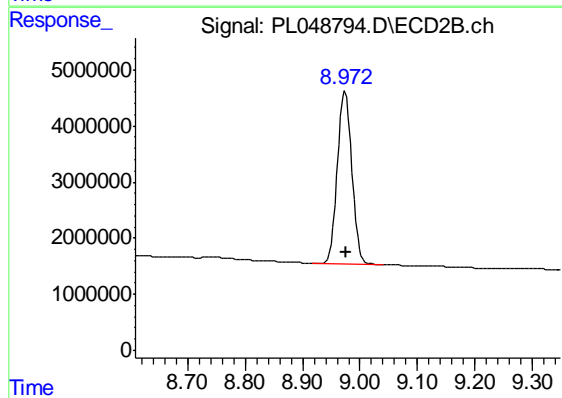
R.T.: 0.000 min
 Exp R.T. : 6.913 min
 Response: 0
 Conc: N.D.



#28 Decachlorobiphenyl

R.T.: 7.993 min
Delta R.T.: -0.003 min
Response: 188711417
Conc: 18.77 ng/ml

Instrument :
ECD_L
ClientSampleId :
PB119930BS



#28 Decachlorobiphenyl

R.T.: 8.974 min
Delta R.T.: -0.001 min
Response: 54167885
Conc: 20.41 ng/ml