

Data Path : Z:\pestpcbsrv\HPCHEM1\ECD_L\Data\PL052120\
 Data File : PL058836.D
 Signal(s) : Signal #1: ECD1A.ch Signal #2: ECD2B.ch
 Acq On : 21 May 2020 14:30
 Operator : AJ\MA
 Sample : L2722-01MS
 Misc :
 ALS Vial : 11 Sample Multiplier: 1

Instrument :
 ECD_L
 ClientSampled :

Integration File signal 1: autoint1.e
 Integration File signal 2: autoint2.e
 Quant Time: May 21 15:09:47 2020
 Quant Method : Z:\pestpcbsrv\HPCHEM1\ECD_L\methods\PL052020.M
 Quant Title : GC Extractables
 QLast Update : Wed May 20 11:27:53 2020
 Response via : Initial Calibration
 Integrator: ChemStation

Volume Inj. : 1 µl
 Signal #1 Phase : ZB-MR2 Signal #2 Phase: ZB-MR1
 Signal #1 Info : 30M x 0.32mm x0.2 Signal #2 Info : 30M x 0.32mm x0.5µm

	Compound	RT#1	RT#2	Resp#1	Resp#2	ng/ml	ng/ml

System Monitoring Compounds							
1)	SA Tetrachlo...	3.529	4.076	35648235	51618770	19.441	19.059
28)	SA Decachlor...	8.311	9.187	28200312	46347697	16.691	17.581
Target Compounds							
2)	A alpha-BHC	3.972	4.469	123.9E6	185.9E6	45.558	46.322
3)	MA gamma-BHC...	4.257	4.756	109.5E6	170.6E6	46.393	45.009
4)	MA Heptachlor	4.565	5.270	103.8E6	174.5E6	46.173	45.553
5)	MB Aldrin	4.815	5.579	90871650	159.8E6	46.938	46.850
6)	B beta-BHC	4.507	4.924	49505873	77681826	48.169	44.643
7)	B delta-BHC	4.714	5.144	97917143	156.5E6	45.667	42.924
8)	Heptachlo...	5.261	5.966	86632072	150.5E6	46.939	45.644
9)	A Endosulfan I	5.602	6.325	80211221	130.0E6	47.253	44.221
10)	B gamma-Chl...	5.489	6.200	86283170	148.0E6	47.063	44.691
11)	B alpha-Chl...	5.548	6.274	84483390	141.1E6	46.171	43.430
12)	B 4,4'-DDE	5.711	6.428	78746552	123.5E6	47.955	43.261
13)	MA Dieldrin	5.846	6.583	84668383	139.7E6	48.235	46.123
14)	MA Endrin	6.104	6.802	71943090	112.0E6	45.903	44.877
15)	B Endosulfa...	6.376	7.010	81145642	135.6E6	48.705	48.371
16)	A 4,4'-DDD	6.228	6.919	67788284	116.8E6	47.889	48.968
17)	MA 4,4'-DDT	6.470	7.219	65596720	108.2E6	45.096	45.516
18)	B Endrin al...	6.544	7.133	65456039	110.7E6	46.383	46.933
19)	B Endosulfa...	6.758	7.357	76783610	124.0E6	47.064	47.173
20)	A Methoxychlor	7.017	7.675	38644737	62258014	45.303	44.640
21)	B Endrin ke...	7.250	7.830	85211650	139.4E6	46.206	50.323
22)	Mirex	7.445	8.287	69890122	99824233	45.188	45.547
23)	Chlordane-1	4.411	0.000	1044751	0	19.968	N.D. #
24)	Chlordane-2	0.000	5.579f	0	159.8E6	N.D.	1566.454 #
25)	Chlordane-3	5.489	6.200	86283170	148.0E6	575.314	388.855 #
26)	Chlordane-4	5.548	6.274	84483390	141.1E6	687.773	309.794 #
27)	Chlordane-5	6.376	0.000	81145642	0	1535.490	N.D. #

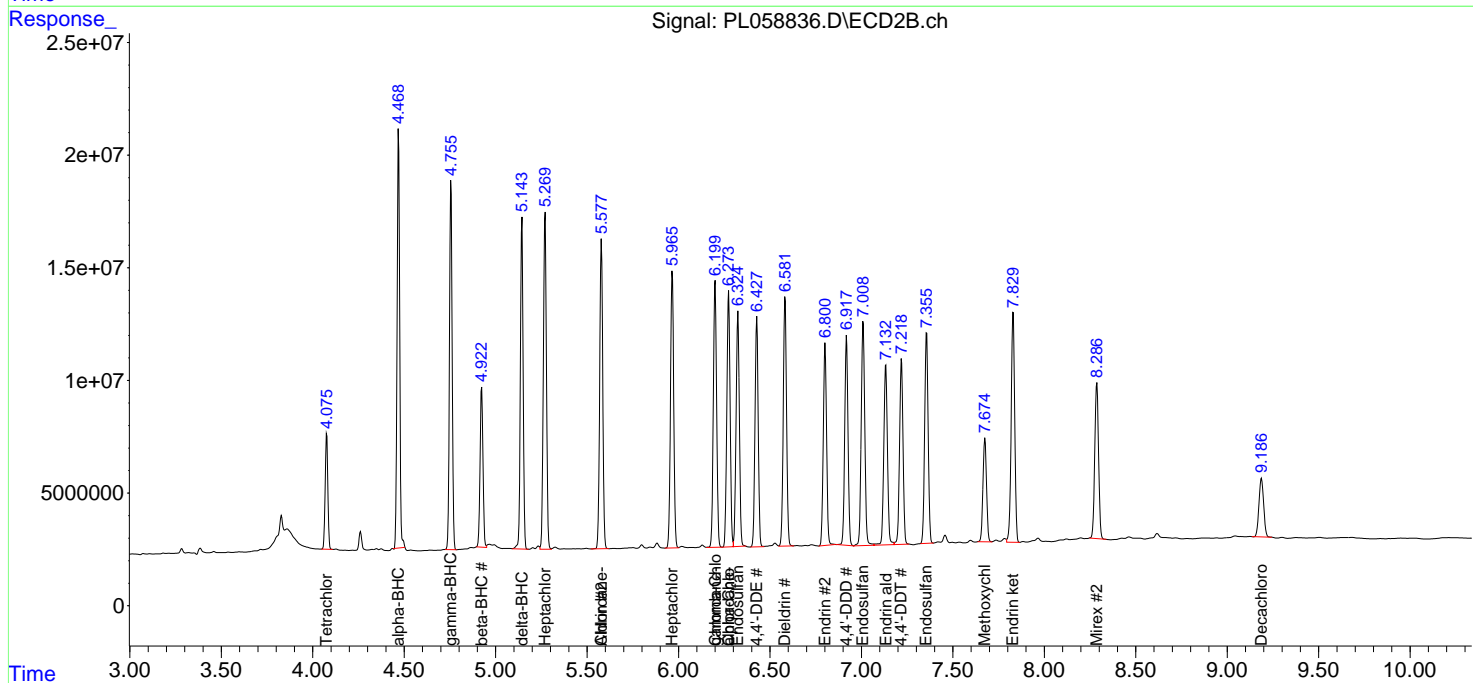
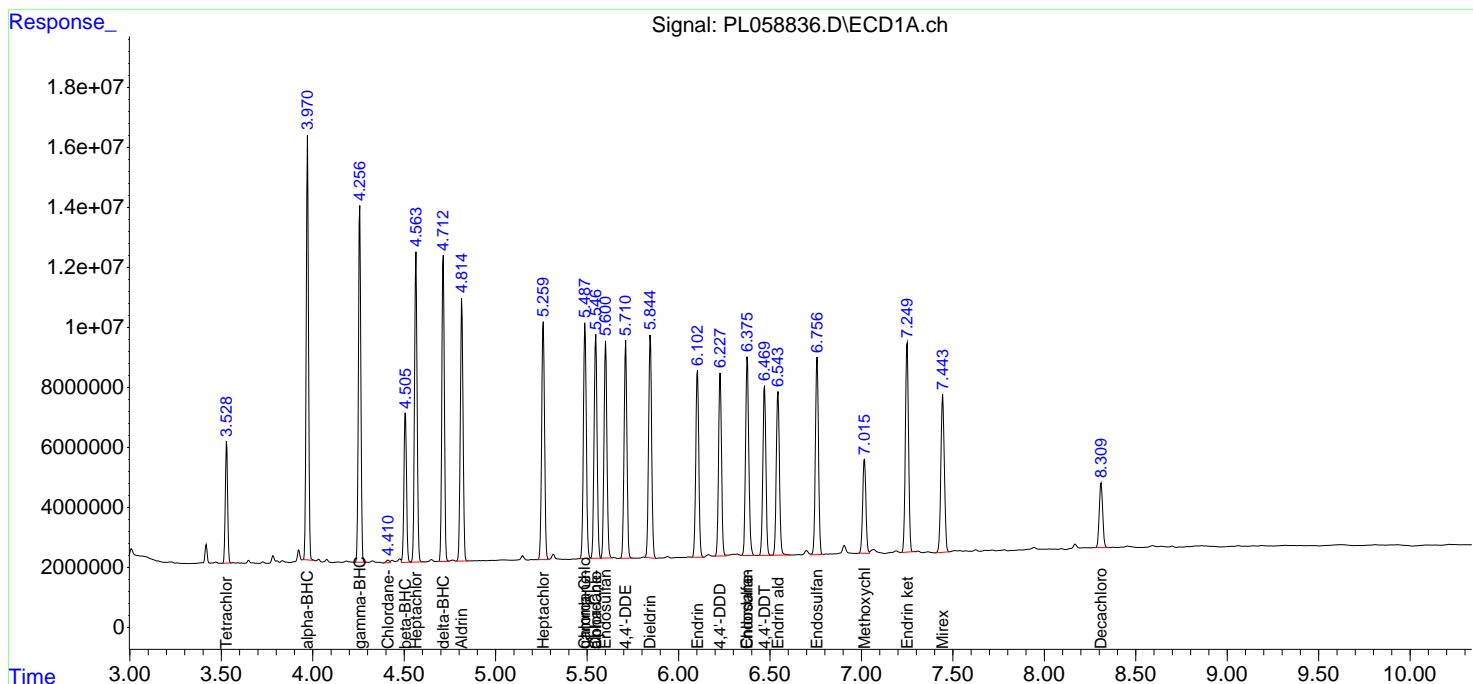
(f)=RT Delta > 1/2 Window (#)=Amounts differ by > 25% (m)=manual int.

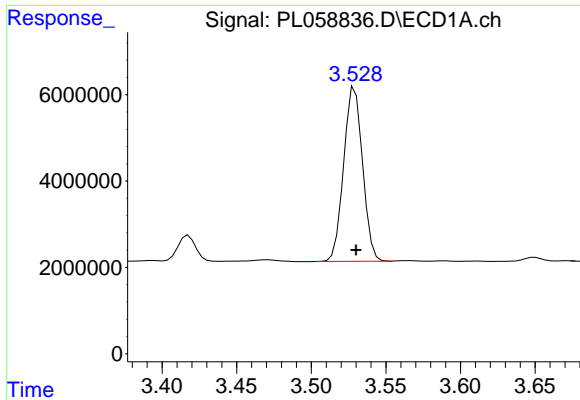
Data Path : Z:\pestpcbsrv\HPCHEM1\ECD_L\Data\PL052120\
 Data File : PL058836.D
 Signal(s) : Signal #1: ECD1A.ch Signal #2: ECD2B.ch
 Acq On : 21 May 2020 14:30
 Operator : AJ\MA
 Sample : L2722-01MS
 Misc :
 ALS Vial : 11 Sample Multiplier: 1

Instrument :
 ECD_L
 ClientSampled :

Integration File signal 1: autoint1.e
 Integration File signal 2: autoint2.e
 Quant Time: May 21 15:09:47 2020
 Quant Method : Z:\pestpcbsrv\HPCHEM1\ECD_L\methods\PL052020.M
 Quant Title : GC Extractables
 QLast Update : Wed May 20 11:27:53 2020
 Response via : Initial Calibration
 Integrator: ChemStation

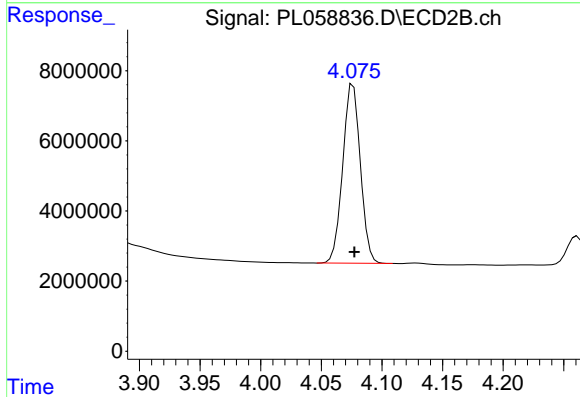
Volume Inj. : 1 µl
 Signal #1 Phase : ZB-MR2 Signal #2 Phase: ZB-MR1
 Signal #1 Info : 30M x 0.32mm x0.2 Signal #2 Info : 30M x 0.32mm x0.5µm



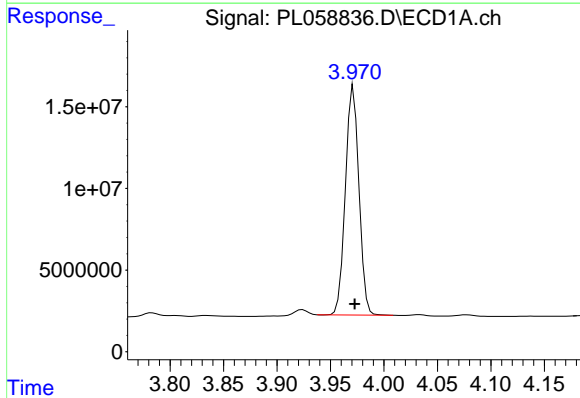


#1 Tetrachloro-m-xylene
 R.T.: 3.529 min
 Delta R.T.: 0.000 min
 Response: 35648235
 Conc: 19.44 ng/ml

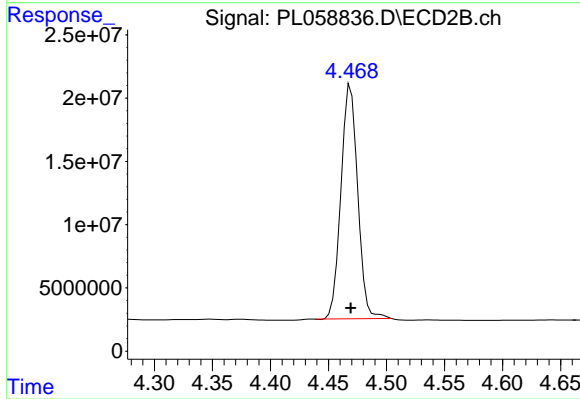
Instrument :
 ECD_L
 ClientSampled :



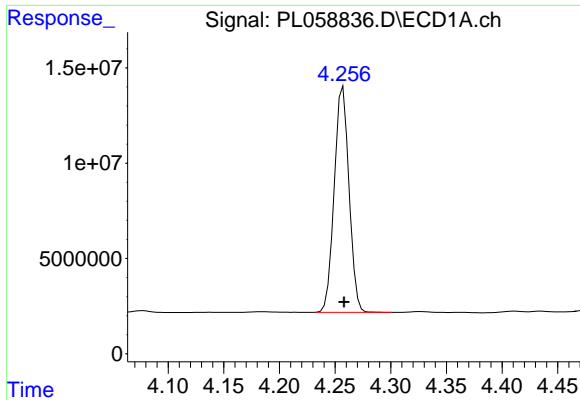
#1 Tetrachloro-m-xylene
 R.T.: 4.076 min
 Delta R.T.: 0.000 min
 Response: 51618770
 Conc: 19.06 ng/ml



#2 alpha-BHC
 R.T.: 3.972 min
 Delta R.T.: -0.001 min
 Response: 123866006
 Conc: 45.56 ng/ml

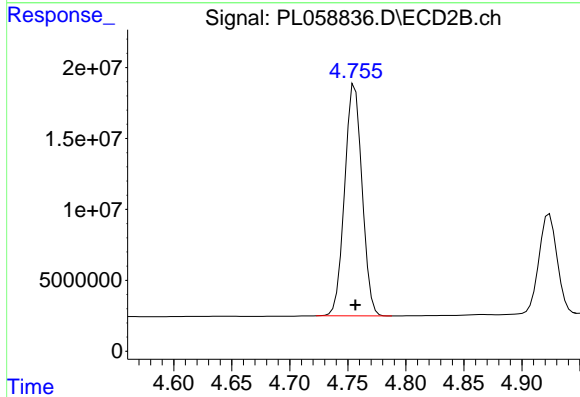


#2 alpha-BHC
 R.T.: 4.469 min
 Delta R.T.: 0.000 min
 Response: 185902456
 Conc: 46.32 ng/ml

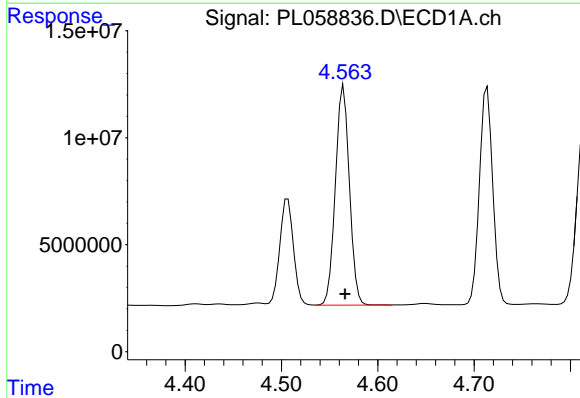


#3 gamma-BHC (Lindane)
 R.T.: 4.257 min
 Delta R.T.: 0.000 min
 Response: 109499135
 Conc: 46.39 ng/ml

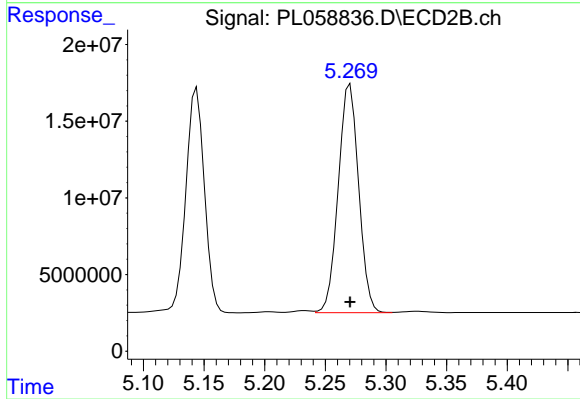
Instrument :
 ECD_L
 ClientSampleId :



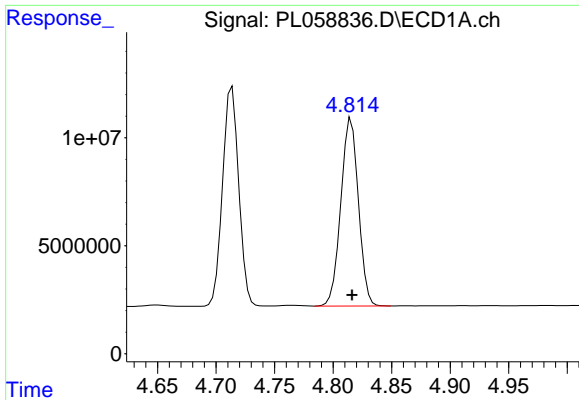
#3 gamma-BHC (Lindane)
 R.T.: 4.756 min
 Delta R.T.: 0.000 min
 Response: 170577443
 Conc: 45.01 ng/ml



#4 Heptachlor
 R.T.: 4.565 min
 Delta R.T.: -0.001 min
 Response: 103817866
 Conc: 46.17 ng/ml

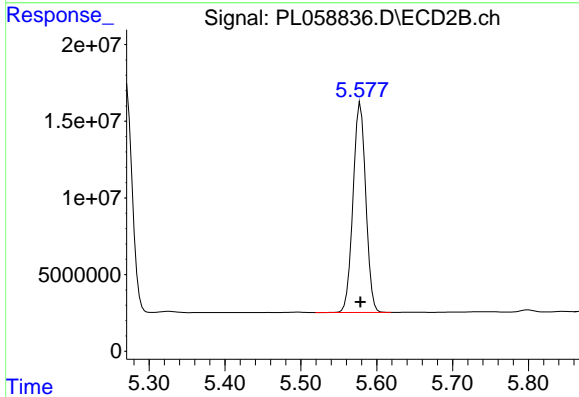


#4 Heptachlor
 R.T.: 5.270 min
 Delta R.T.: 0.000 min
 Response: 174485586
 Conc: 45.55 ng/ml

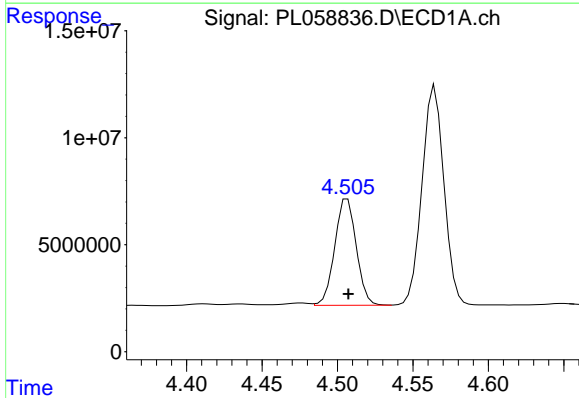


#5 Aldrin
 R.T.: 4.815 min
 Delta R.T.: 0.000 min
 Response: 90871650
 Conc: 46.94 ng/ml

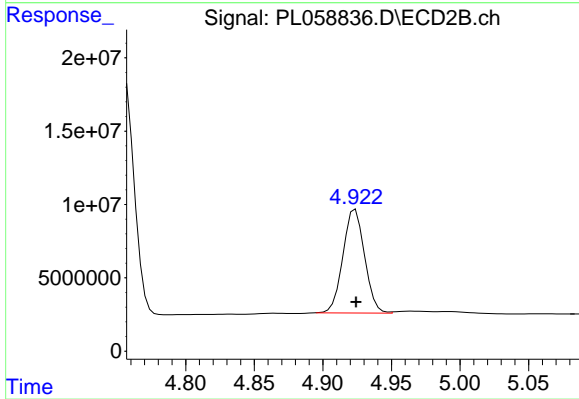
Instrument :
 ECD_L
 ClientSampleId :



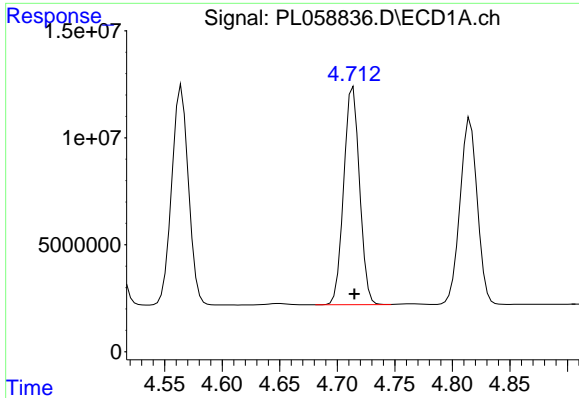
#5 Aldrin
 R.T.: 5.579 min
 Delta R.T.: 0.000 min
 Response: 159811814
 Conc: 46.85 ng/ml



#6 beta-BHC
 R.T.: 4.507 min
 Delta R.T.: 0.000 min
 Response: 49505873
 Conc: 48.17 ng/ml

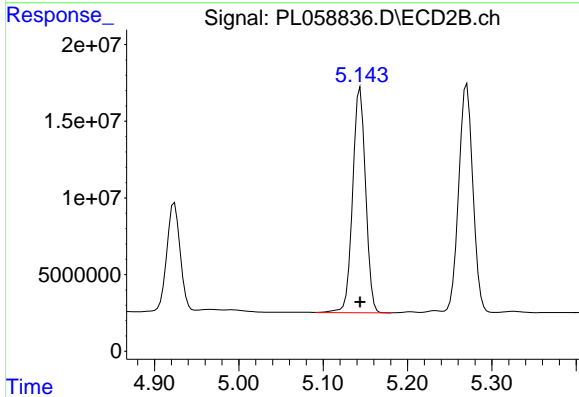


#6 beta-BHC
 R.T.: 4.924 min
 Delta R.T.: 0.000 min
 Response: 77681826
 Conc: 44.64 ng/ml

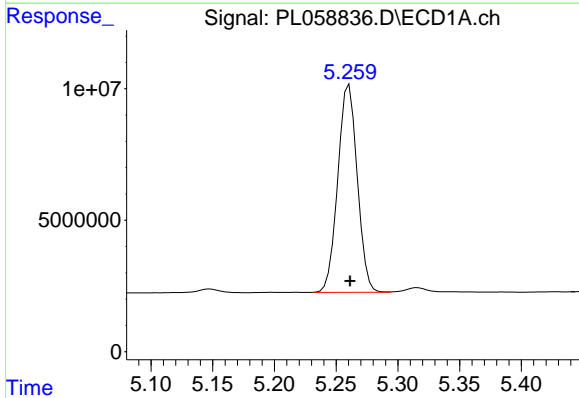


#7 delta-BHC
 R.T.: 4.714 min
 Delta R.T.: -0.001 min
 Response: 97917143
 Conc: 45.67 ng/ml

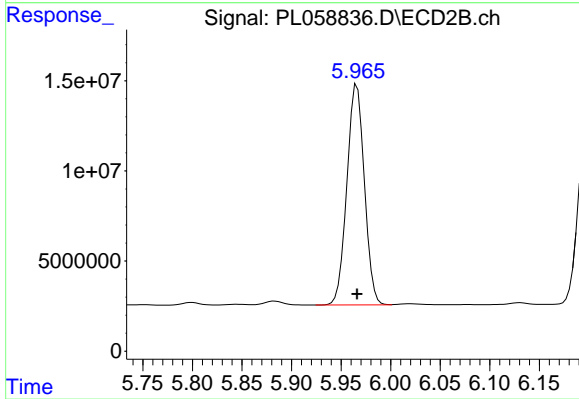
Instrument :
 ECD_L
 ClientSampled :



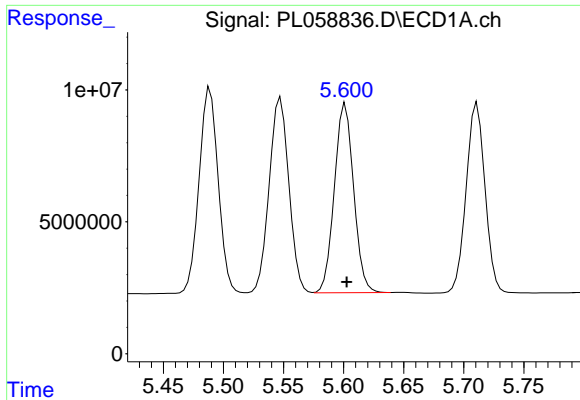
#7 delta-BHC
 R.T.: 5.144 min
 Delta R.T.: 0.000 min
 Response: 156548116
 Conc: 42.92 ng/ml



#8 Heptachlor epoxide
 R.T.: 5.261 min
 Delta R.T.: 0.000 min
 Response: 86632072
 Conc: 46.94 ng/ml

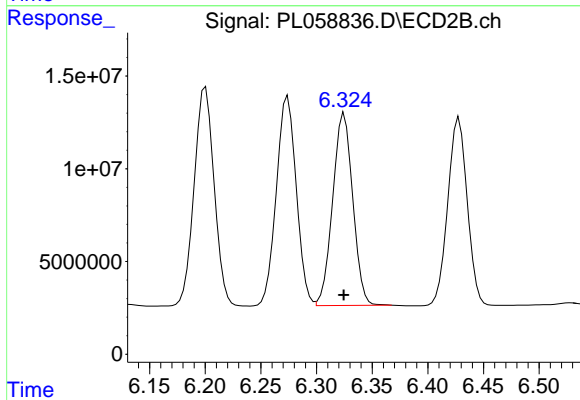


#8 Heptachlor epoxide
 R.T.: 5.966 min
 Delta R.T.: 0.000 min
 Response: 150543821
 Conc: 45.64 ng/ml

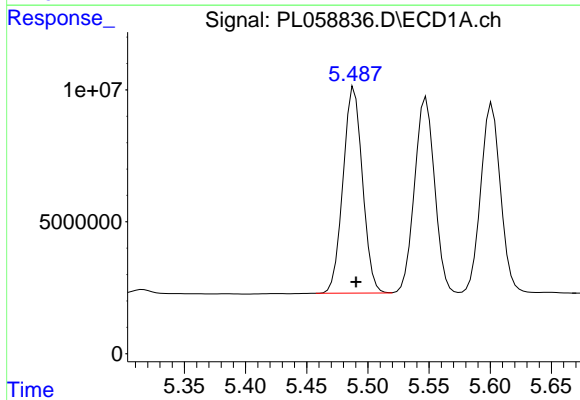


#9 Endosulfan I
 R.T.: 5.602 min
 Delta R.T.: 0.000 min
 Response: 80211221
 Conc: 47.25 ng/ml

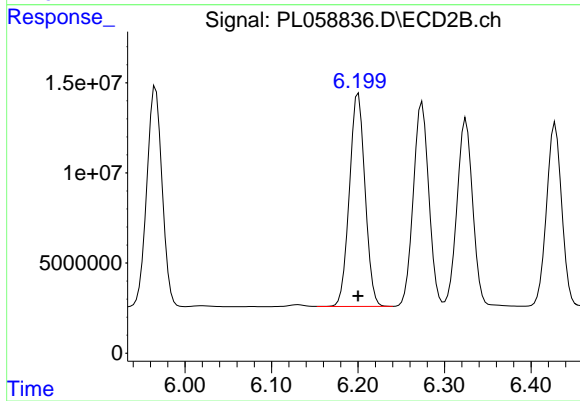
Instrument :
 ECD_L
 ClientSampled :



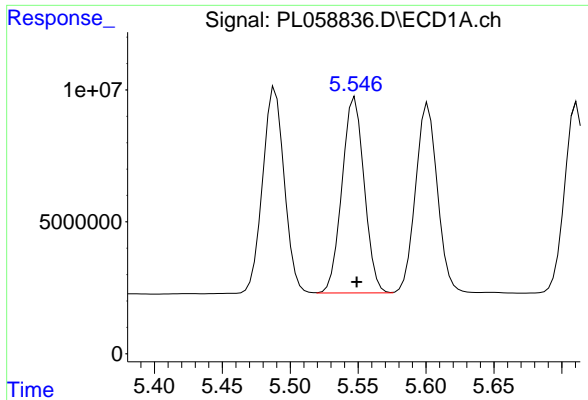
#9 Endosulfan I
 R.T.: 6.325 min
 Delta R.T.: 0.000 min
 Response: 129997900
 Conc: 44.22 ng/ml



#10 gamma-Chlordane
 R.T.: 5.489 min
 Delta R.T.: -0.001 min
 Response: 86283170
 Conc: 47.06 ng/ml



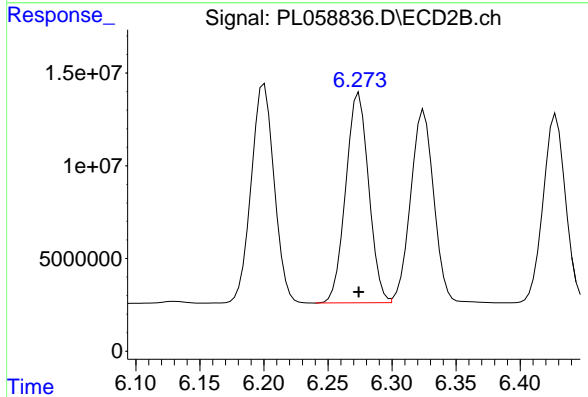
#10 gamma-Chlordane
 R.T.: 6.200 min
 Delta R.T.: 0.000 min
 Response: 148024927
 Conc: 44.69 ng/ml



#11 alpha-Chlordane

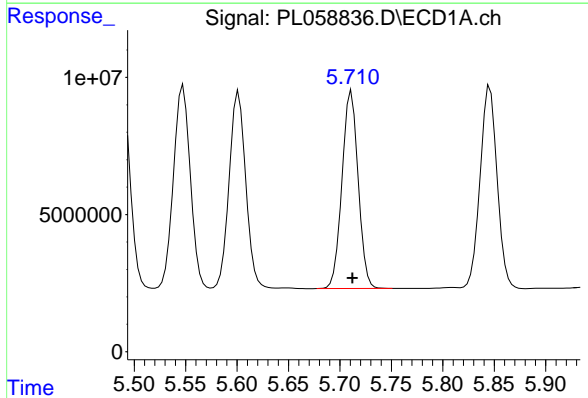
R.T.: 5.548 min
Delta R.T.: -0.001 min
Response: 84483390
Conc: 46.17 ng/ml

Instrument :
ECD_L
ClientSampleId :



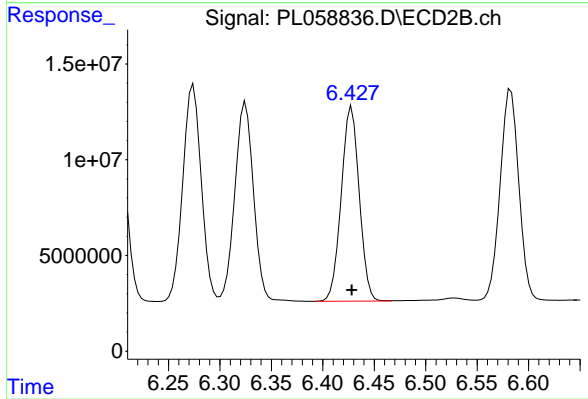
#11 alpha-Chlordane

R.T.: 6.274 min
Delta R.T.: 0.000 min
Response: 141067610
Conc: 43.43 ng/ml



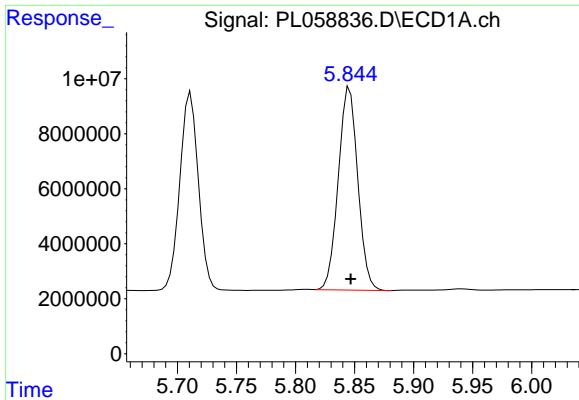
#12 4,4'-DDE

R.T.: 5.711 min
Delta R.T.: 0.000 min
Response: 78746552
Conc: 47.95 ng/ml



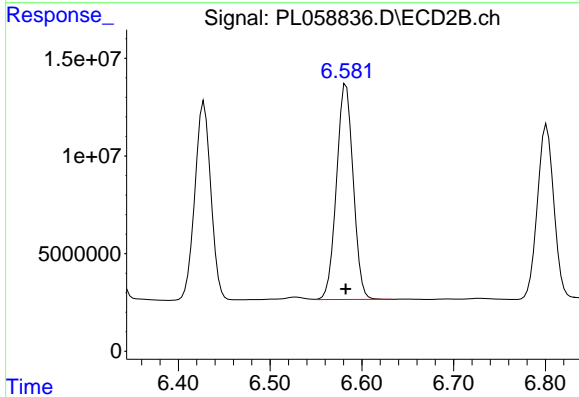
#12 4,4'-DDE

R.T.: 6.428 min
Delta R.T.: 0.000 min
Response: 123463743
Conc: 43.26 ng/ml

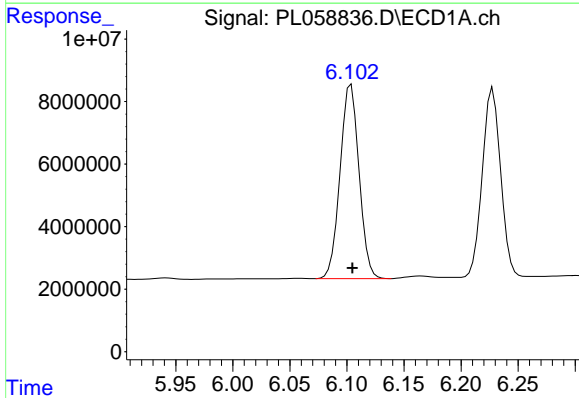


#13 Dieldrin
 R.T.: 5.846 min
 Delta R.T.: -0.001 min
 Response: 84668383
 Conc: 48.23 ng/ml

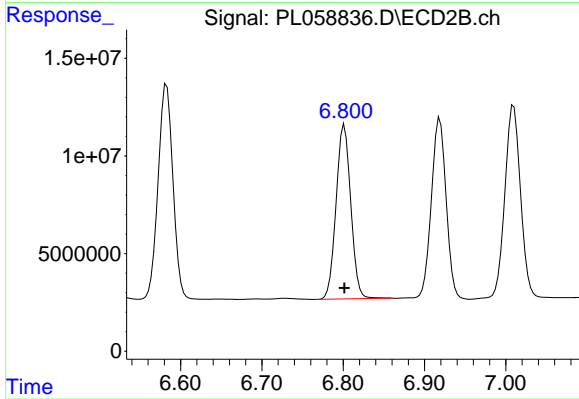
Instrument :
 ECD_L
 ClientSampled :



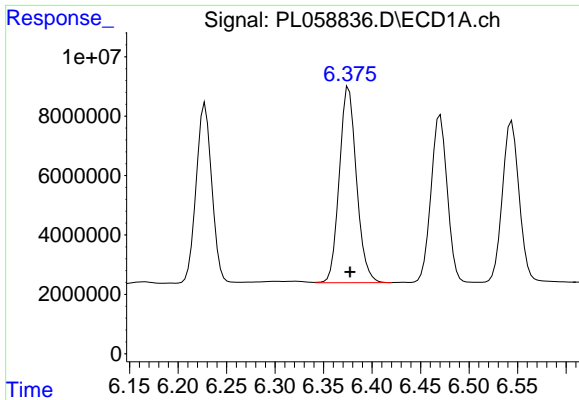
#13 Dieldrin
 R.T.: 6.583 min
 Delta R.T.: 0.000 min
 Response: 139710272
 Conc: 46.12 ng/ml



#14 Endrin
 R.T.: 6.104 min
 Delta R.T.: -0.001 min
 Response: 71943090
 Conc: 45.90 ng/ml



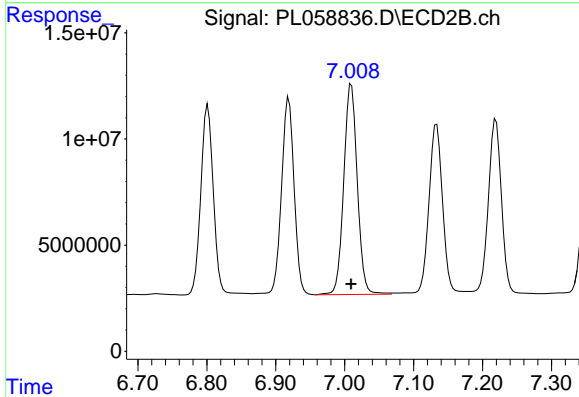
#14 Endrin
 R.T.: 6.802 min
 Delta R.T.: 0.000 min
 Response: 111981759
 Conc: 44.88 ng/ml



#15 Endosulfan II

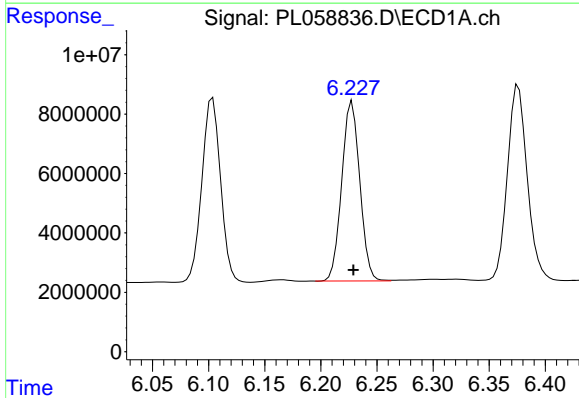
R.T.: 6.376 min
 Delta R.T.: -0.001 min
 Response: 81145642
 Conc: 48.70 ng/ml

Instrument :
 ECD_L
 ClientSampled :



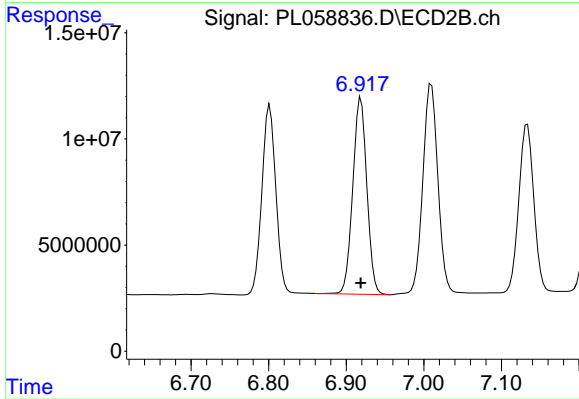
#15 Endosulfan II

R.T.: 7.010 min
 Delta R.T.: 0.000 min
 Response: 135585144
 Conc: 48.37 ng/ml



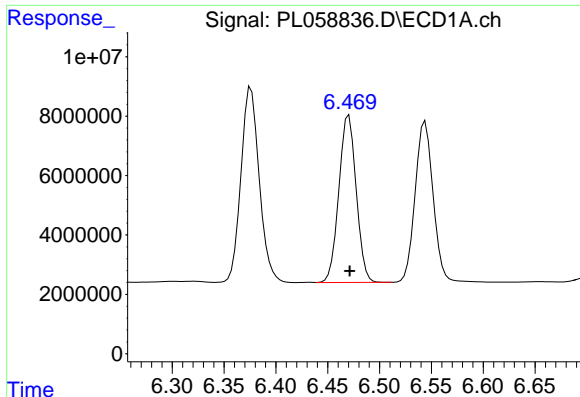
#16 4,4'-DDD

R.T.: 6.228 min
 Delta R.T.: -0.001 min
 Response: 67788284
 Conc: 47.89 ng/ml



#16 4,4'-DDD

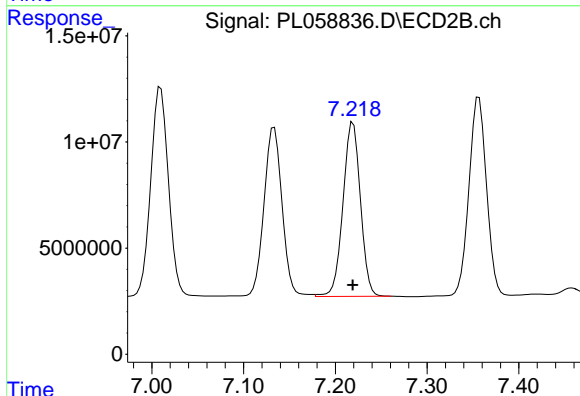
R.T.: 6.919 min
 Delta R.T.: 0.000 min
 Response: 116830023
 Conc: 48.97 ng/ml



#17 4,4'-DDT

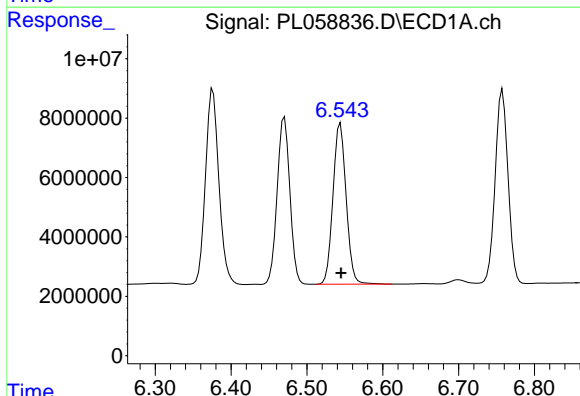
R.T.: 6.470 min
 Delta R.T.: 0.000 min
 Response: 65596720
 Conc: 45.10 ng/ml

Instrument :
 ECD_L
 ClientSampled :



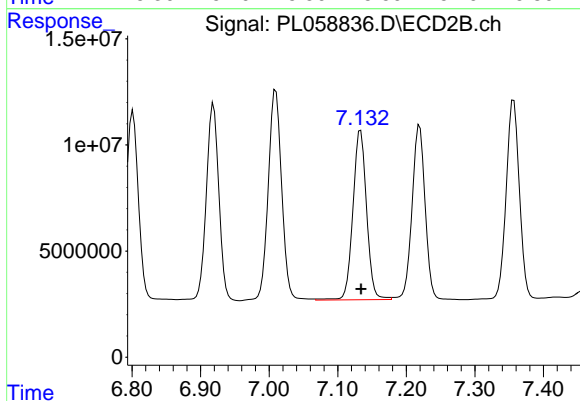
#17 4,4'-DDT

R.T.: 7.219 min
 Delta R.T.: 0.000 min
 Response: 108241316
 Conc: 45.52 ng/ml



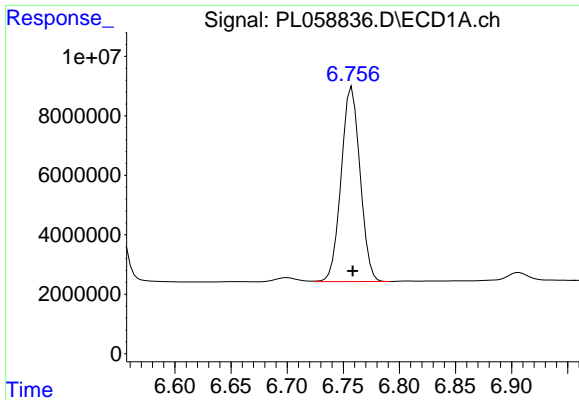
#18 Endrin aldehyde

R.T.: 6.544 min
 Delta R.T.: -0.001 min
 Response: 65456039
 Conc: 46.38 ng/ml



#18 Endrin aldehyde

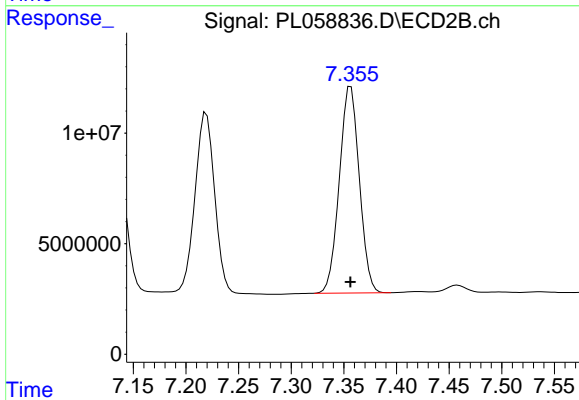
R.T.: 7.133 min
 Delta R.T.: 0.000 min
 Response: 110743098
 Conc: 46.93 ng/ml



#19 Endosulfan Sulfate

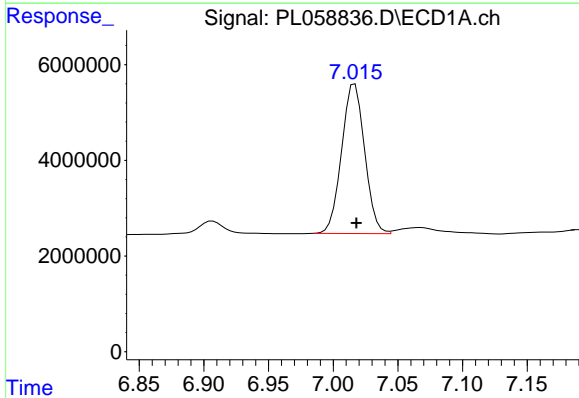
R.T.: 6.758 min
 Delta R.T.: 0.000 min
 Response: 76783610
 Conc: 47.06 ng/ml

Instrument :
 ECD_L
 ClientSampled :



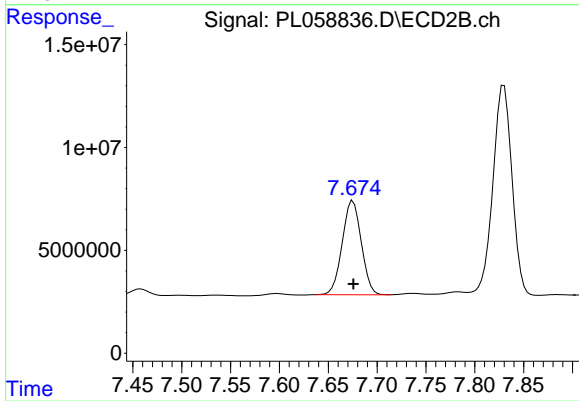
#19 Endosulfan Sulfate

R.T.: 7.357 min
 Delta R.T.: 0.000 min
 Response: 123966084
 Conc: 47.17 ng/ml



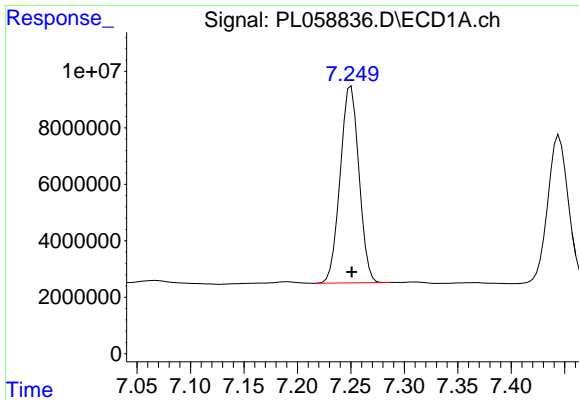
#20 Methoxychlor

R.T.: 7.017 min
 Delta R.T.: -0.001 min
 Response: 38644737
 Conc: 45.30 ng/ml



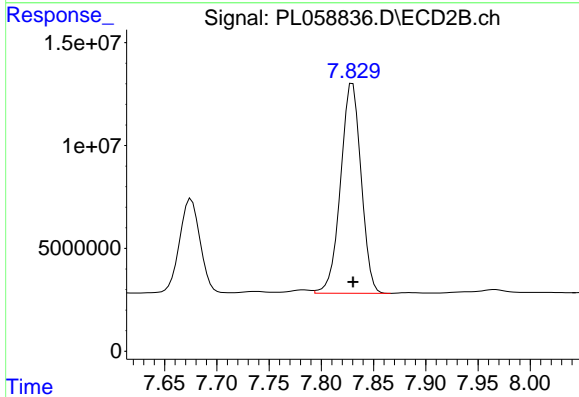
#20 Methoxychlor

R.T.: 7.675 min
 Delta R.T.: 0.000 min
 Response: 62258014
 Conc: 44.64 ng/ml

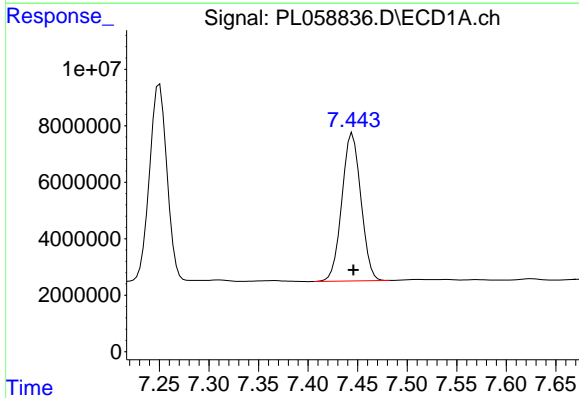


#21 Endrin ketone
 R.T.: 7.250 min
 Delta R.T.: 0.000 min
 Response: 85211650
 Conc: 46.21 ng/ml

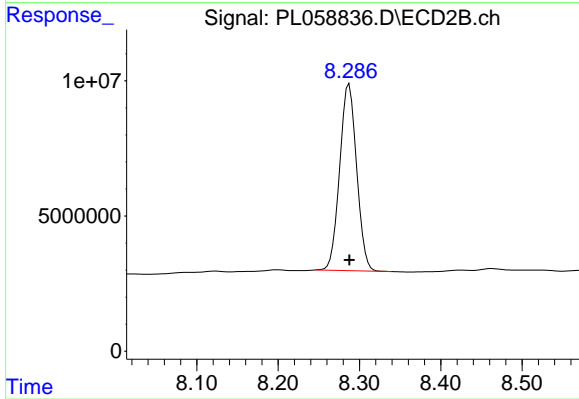
Instrument :
 ECD_L
 ClientSampleId :



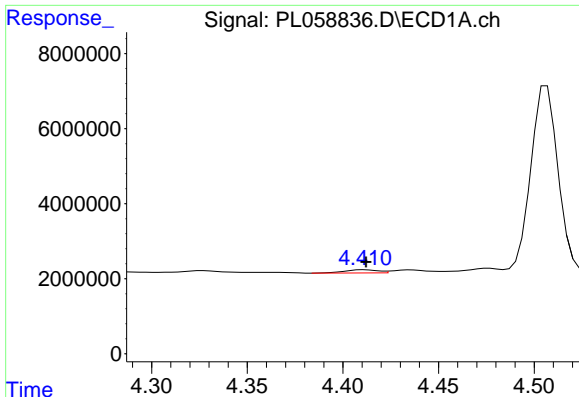
#21 Endrin ketone
 R.T.: 7.830 min
 Delta R.T.: 0.000 min
 Response: 139411935
 Conc: 50.32 ng/ml



#22 Mirex
 R.T.: 7.445 min
 Delta R.T.: 0.000 min
 Response: 69890122
 Conc: 45.19 ng/ml



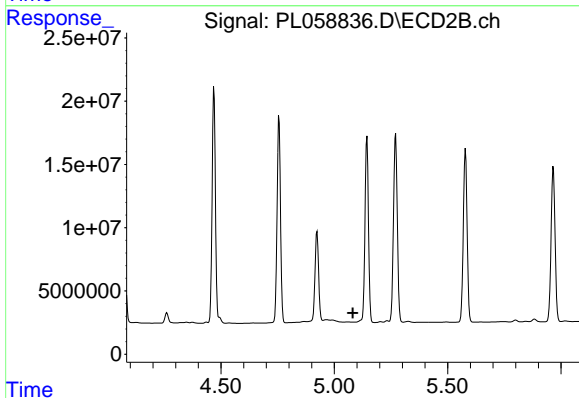
#22 Mirex
 R.T.: 8.287 min
 Delta R.T.: 0.000 min
 Response: 99824233
 Conc: 45.55 ng/ml



#23 Chlordane-1

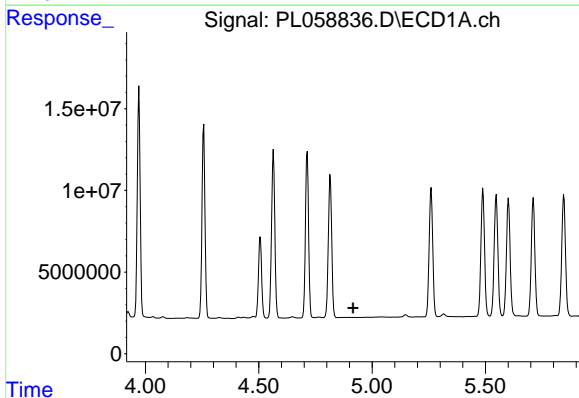
R.T.: 4.411 min
 Delta R.T.: 0.000 min
 Response: 1044751
 Conc: 19.97 ng/ml

Instrument :
 ECD_L
 ClientSampleId :



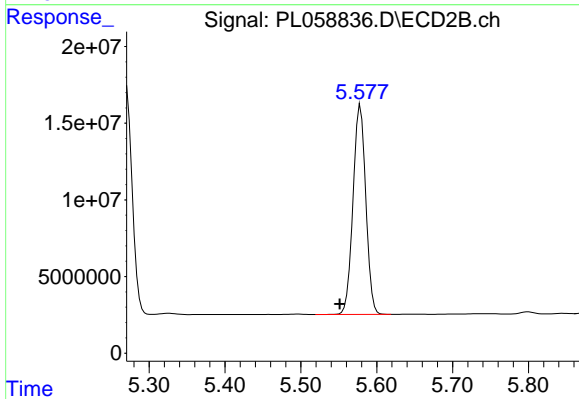
#23 Chlordane-1

R.T.: 0.000 min
 Exp R.T. : 5.081 min
 Response: 0
 Conc: N.D.



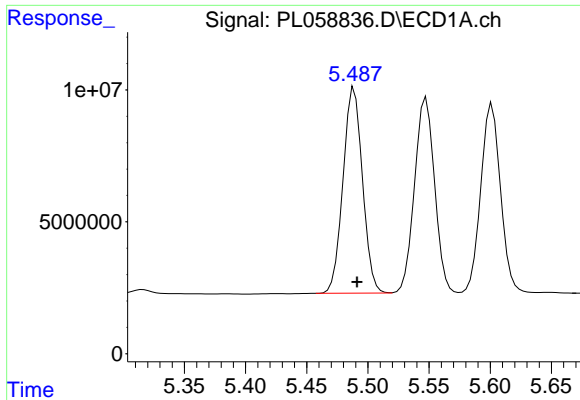
#24 Chlordane-2

R.T.: 0.000 min
 Exp R.T. : 4.917 min
 Response: 0
 Conc: N.D.



#24 Chlordane-2

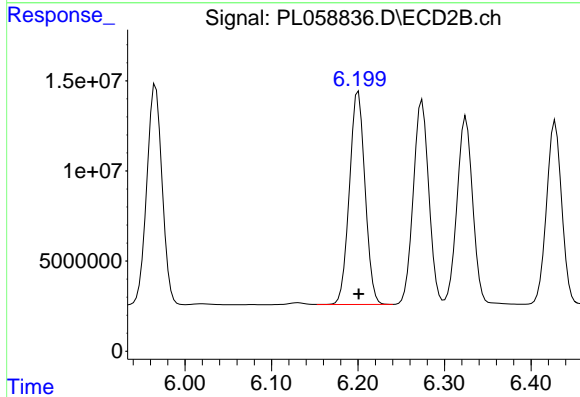
R.T.: 5.579 min
 Delta R.T.: 0.027 min
 Response: 159811814
 Conc: 1566.45 ng/ml



#25 Chlordane-3

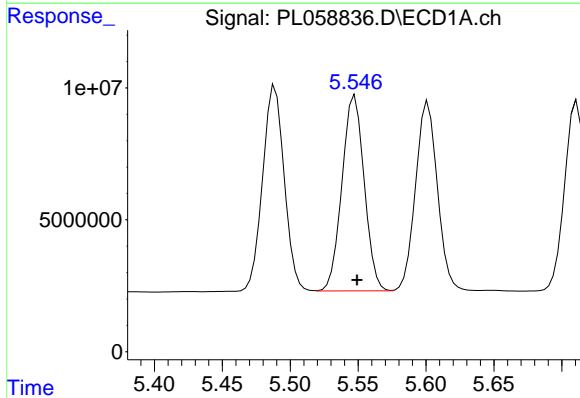
R.T.: 5.489 min
 Delta R.T.: -0.002 min
 Response: 86283170
 Conc: 575.31 ng/ml

Instrument :
 ECD_L
 ClientSampled :



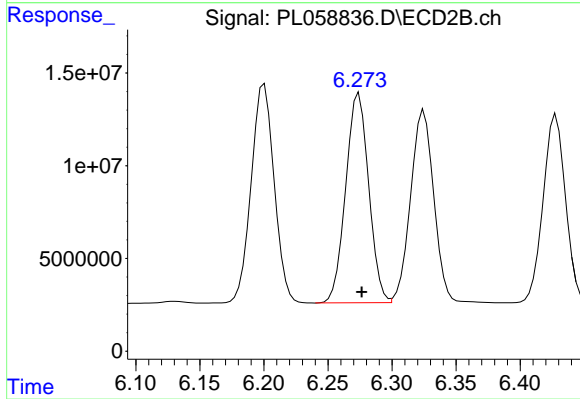
#25 Chlordane-3

R.T.: 6.200 min
 Delta R.T.: 0.000 min
 Response: 148024927
 Conc: 388.85 ng/ml



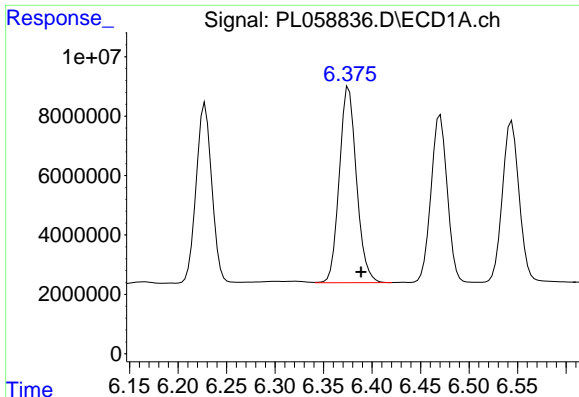
#26 Chlordane-4

R.T.: 5.548 min
 Delta R.T.: -0.002 min
 Response: 84483390
 Conc: 687.77 ng/ml



#26 Chlordane-4

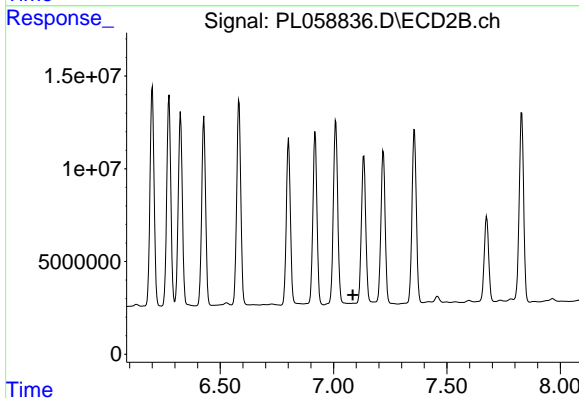
R.T.: 6.274 min
 Delta R.T.: -0.002 min
 Response: 141067610
 Conc: 309.79 ng/ml



#27 Chlordane-5

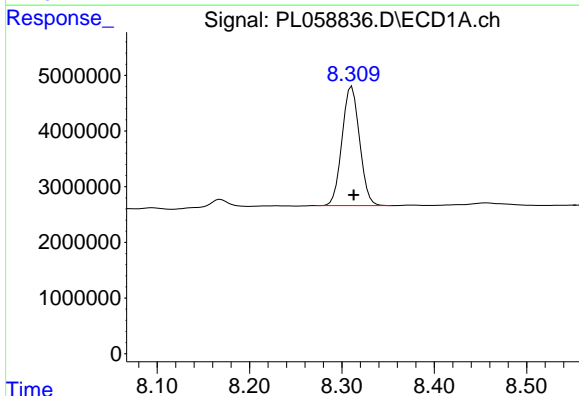
R.T.: 6.376 min
 Delta R.T.: -0.013 min
 Response: 81145642
 Conc: 1535.49 ng/ml

Instrument :
 ECD_L
 ClientSampled :



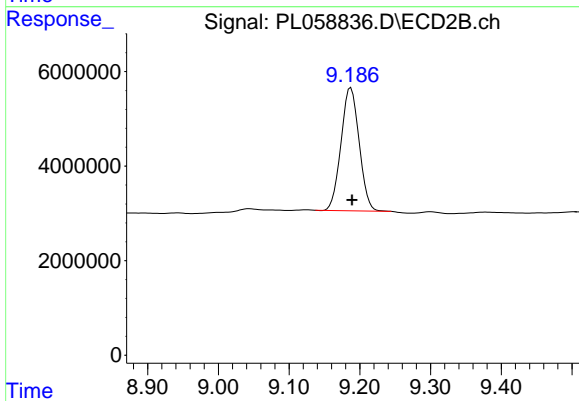
#27 Chlordane-5

R.T.: 0.000 min
 Exp R.T. : 7.085 min
 Response: 0
 Conc: N.D.



#28 Decachlorobiphenyl

R.T.: 8.311 min
 Delta R.T.: -0.002 min
 Response: 28200312
 Conc: 16.69 ng/ml



#28 Decachlorobiphenyl

R.T.: 9.187 min
 Delta R.T.: -0.002 min
 Response: 46347697
 Conc: 17.58 ng/ml