

Data Path : Z:\pestpcbsrv\HPCHEM1\ECD_L\Data\PL052120\
 Data File : PL058857.D
 Signal(s) : Signal #1: ECD1A.ch Signal #2: ECD2B.ch
 Acq On : 21 May 2020 21:56
 Operator : AJ\MA
 Sample : L2728-08
 Misc :
 ALS Vial : 30 Sample Multiplier: 1

Instrument :
 ECD_L
 ClientSampleId :

Integration File signal 1: autoint1.e
 Integration File signal 2: autoint2.e
 Quant Time: May 22 00:45:58 2020
 Quant Method : Z:\pestpcbsrv\HPCHEM1\ECD_L\methods\PL052020.M
 Quant Title : GC Extractables
 QLast Update : Wed May 20 11:27:53 2020
 Response via : Initial Calibration
 Integrator: ChemStation

Volume Inj. : 1 µl
 Signal #1 Phase : ZB-MR1 Signal #2 Phase: ZB-MR1
 Signal #1 Info : 30M x 0.32mm x0.2 Signal #2 Info : 30M x 0.32mm x0.5µm

Compound	RT#1	RT#2	Resp#1	Resp#2	ng/ml	ng/ml

System Monitoring Compounds						
1) SA Tetrachlo...	3.530	4.077	36482124	50860604	19.896	18.779
28) SA Decachlor...	8.311	9.189	31391747	41797449	18.580	15.855
Target Compounds						
2) A alpha-BHC	3.979	0.000	3030444	0	1.115	N.D. #
3) MA gamma-BHC...	4.263	0.000	902997	0	0.383	N.D. #
7) B delta-BHC	0.000	5.120f	0	3517603	N.D.	0.964 #
9) A Endosulfan I	5.620f	0.000	1411803	0	0.832	N.D. #
10) B gamma-Chl...	0.000	6.185f	0	1805026	N.D.	0.545 #
15) B Endosulfa...	0.000	7.012	0	2852508	N.D.	1.018 #
20) A Methoxychlor	0.000	7.677	0	454889	N.D.	0.326 #
25) Chlordane-3	0.000	6.185f	0	1805026	N.D.	4.742 #
27) Chlordane-5	0.000	7.075	0	338121	N.D.	4.268 #

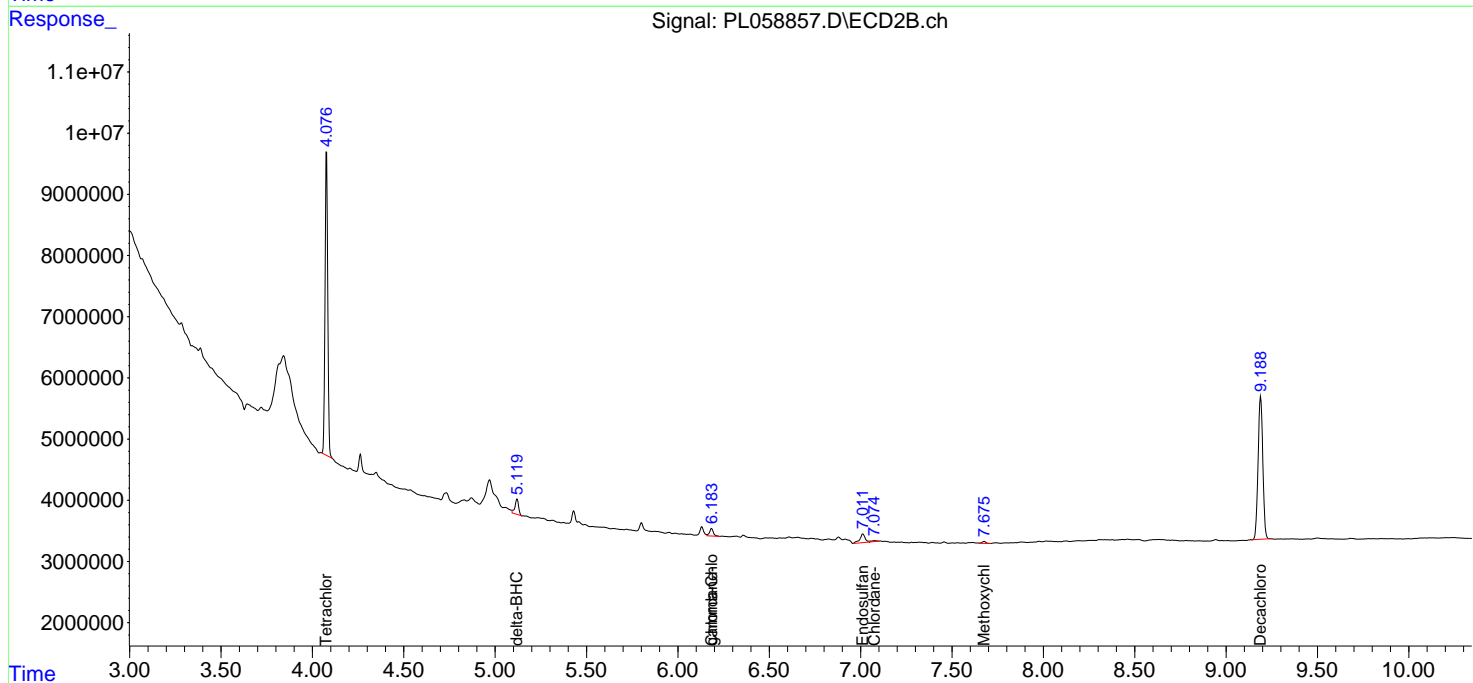
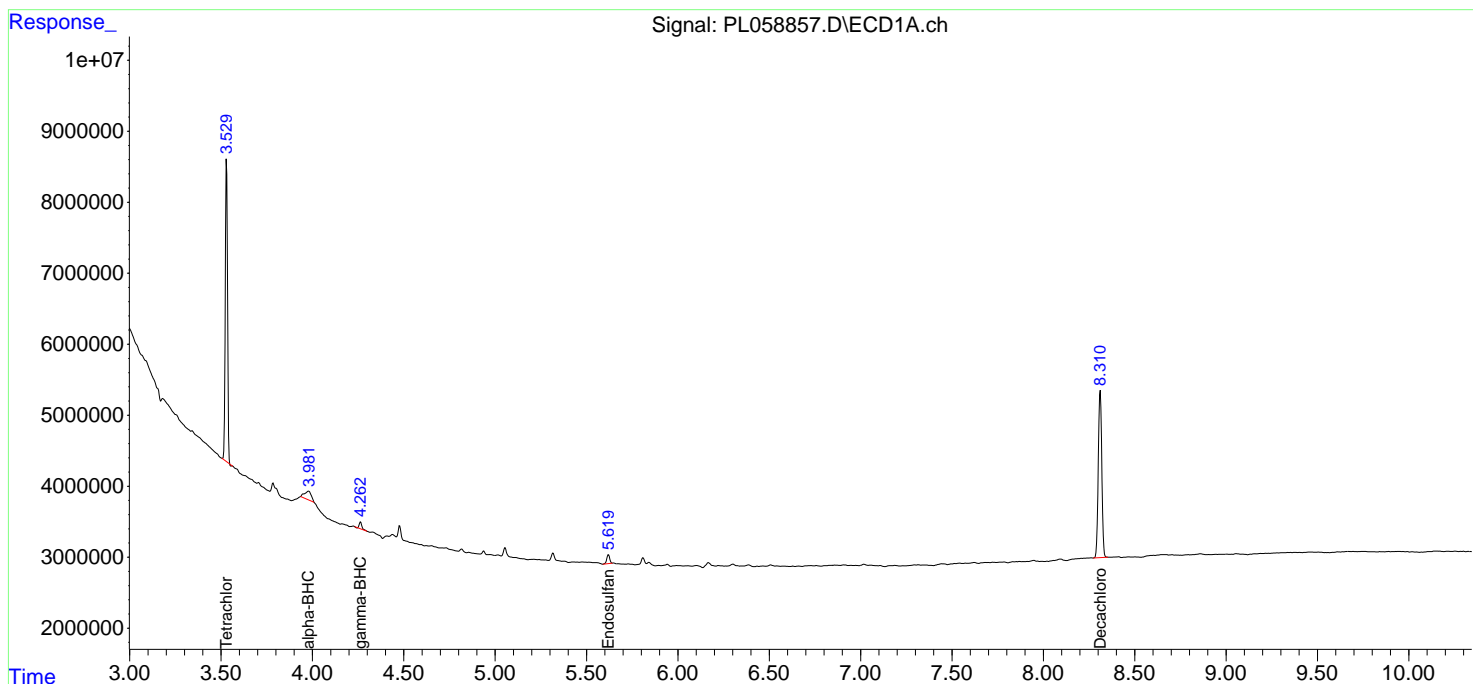
(f)=RT Delta > 1/2 Window (#)=Amounts differ by > 25% (m)=manual int.

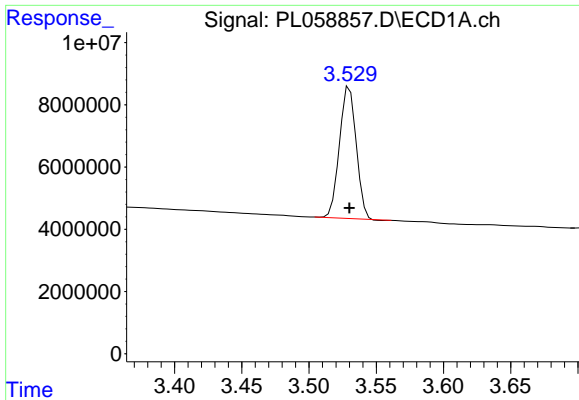
Data Path : Z:\pestpcbsrv\HPCHEM1\ECD_L\Data\PL052120\
 Data File : PL058857.D
 Signal(s) : Signal #1: ECD1A.ch Signal #2: ECD2B.ch
 Acq On : 21 May 2020 21:56
 Operator : AJ\MA
 Sample : L2728-08
 Misc :
 ALS Vial : 30 Sample Multiplier: 1

Instrument :
 ECD_L
 ClientSampled :

Integration File signal 1: autoint1.e
 Integration File signal 2: autoint2.e
 Quant Time: May 22 00:45:58 2020
 Quant Method : Z:\pestpcbsrv\HPCHEM1\ECD_L\methods\PL052020.M
 Quant Title : GC Extractables
 QLast Update : Wed May 20 11:27:53 2020
 Response via : Initial Calibration
 Integrator: ChemStation

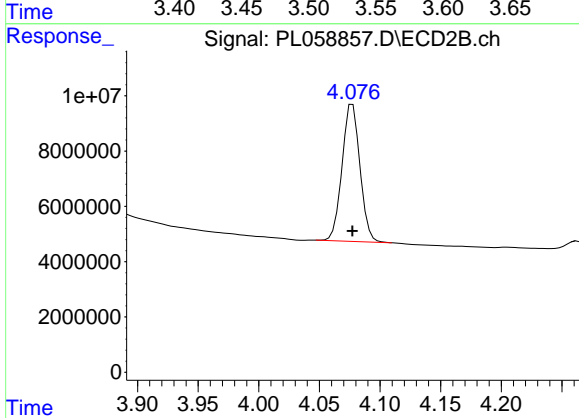
Volume Inj. : 1 µl
 Signal #1 Phase : ZB-MR2 Signal #2 Phase: ZB-MR1
 Signal #1 Info : 30M x 0.32mm x0.2 Signal #2 Info : 30M x 0.32mm x0.5µm



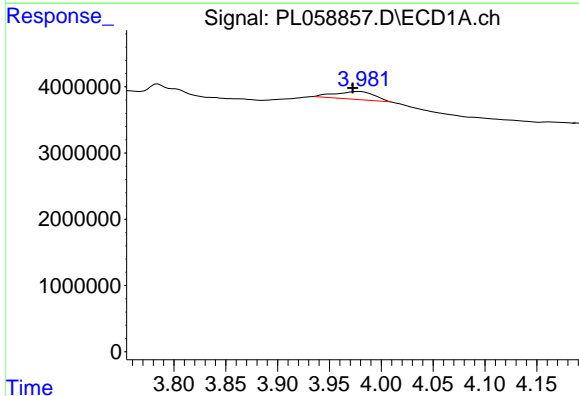


#1 Tetrachloro-m-xylene
 R.T.: 3.530 min
 Delta R.T.: 0.000 min
 Response: 36482124
 Conc: 19.90 ng/ml

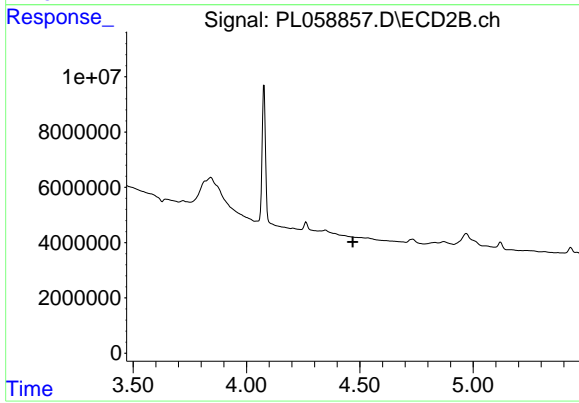
Instrument :
 ECD_L
 ClientSampleId :



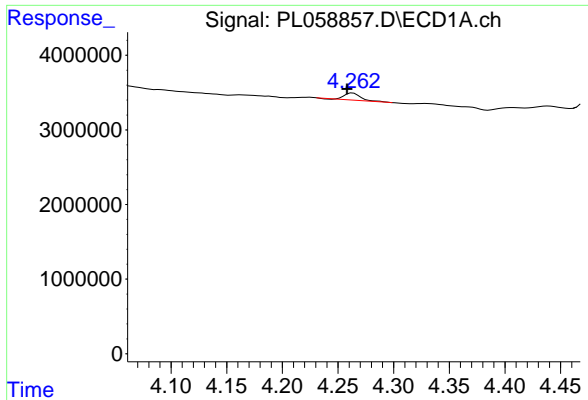
#1 Tetrachloro-m-xylene
 R.T.: 4.077 min
 Delta R.T.: 0.000 min
 Response: 50860604
 Conc: 18.78 ng/ml



#2 alpha-BHC
 R.T.: 3.979 min
 Delta R.T.: 0.006 min
 Response: 3030444
 Conc: 1.11 ng/ml

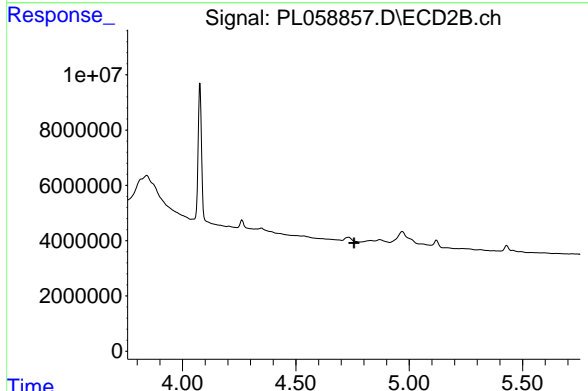


#2 alpha-BHC
 R.T.: 0.000 min
 Exp R.T. : 4.469 min
 Response: 0
 Conc: N.D.

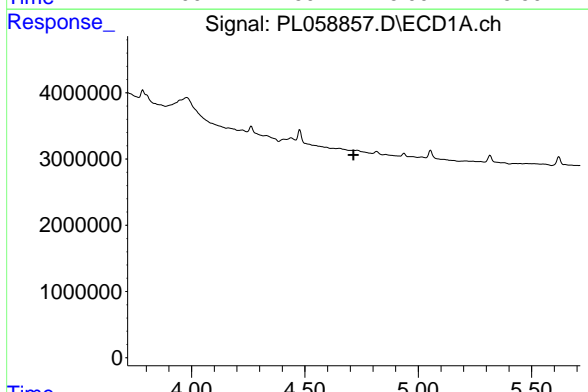


#3 gamma-BHC (Lindane)
 R.T.: 4.263 min
 Delta R.T.: 0.005 min
 Response: 902997
 Conc: 0.38 ng/ml

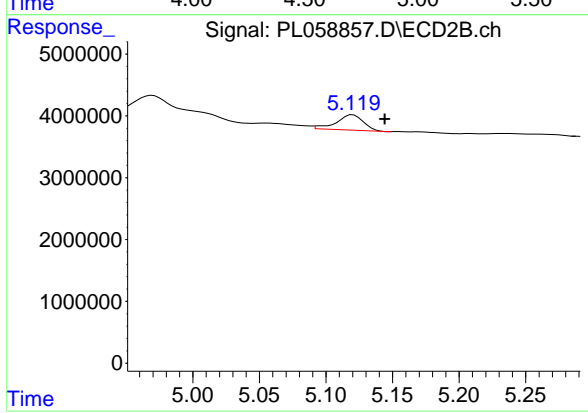
Instrument :
 ECD_L
 ClientSampled :



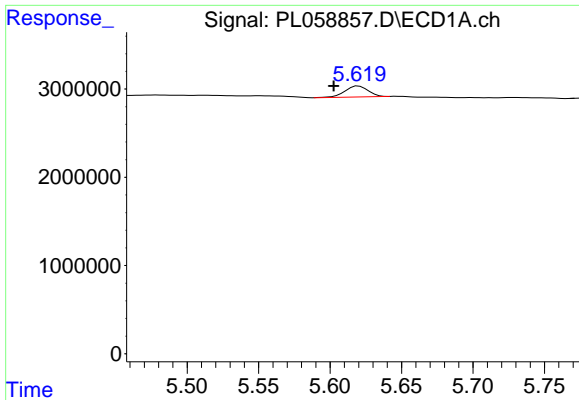
#3 gamma-BHC (Lindane)
 R.T.: 0.000 min
 Exp R.T. : 4.757 min
 Response: 0
 Conc: N.D.



#7 delta-BHC
 R.T.: 0.000 min
 Exp R.T. : 4.715 min
 Response: 0
 Conc: N.D.

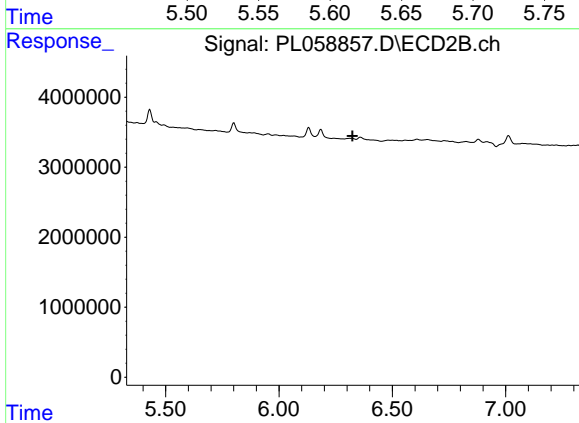


#7 delta-BHC
 R.T.: 5.120 min
 Delta R.T.: -0.024 min
 Response: 3517603
 Conc: 0.96 ng/ml

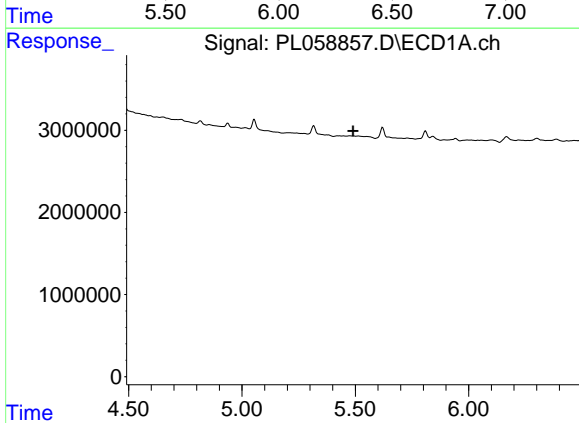


#9 Endosulfan I
 R.T.: 5.620 min
 Delta R.T.: 0.018 min
 Response: 1411803
 Conc: 0.83 ng/ml

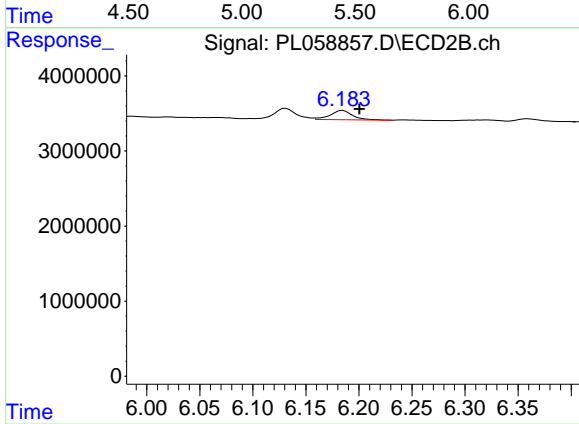
Instrument :
 ECD_L
 ClientSampleId :



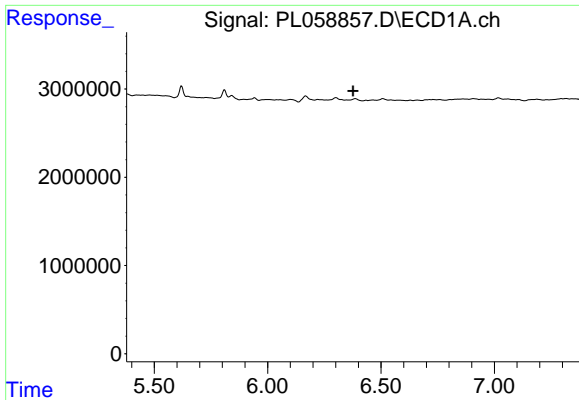
#9 Endosulfan I
 R.T.: 0.000 min
 Exp R.T. : 6.325 min
 Response: 0
 Conc: N.D.



#10 gamma-Chlordane
 R.T.: 0.000 min
 Exp R.T. : 5.490 min
 Response: 0
 Conc: N.D.



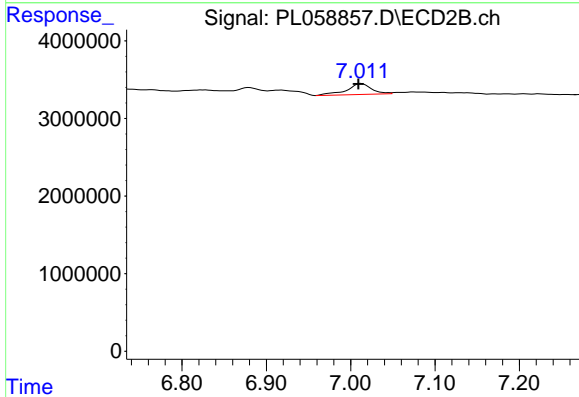
#10 gamma-Chlordane
 R.T.: 6.185 min
 Delta R.T.: -0.016 min
 Response: 1805026
 Conc: 0.54 ng/ml



#15 Endosulfan II

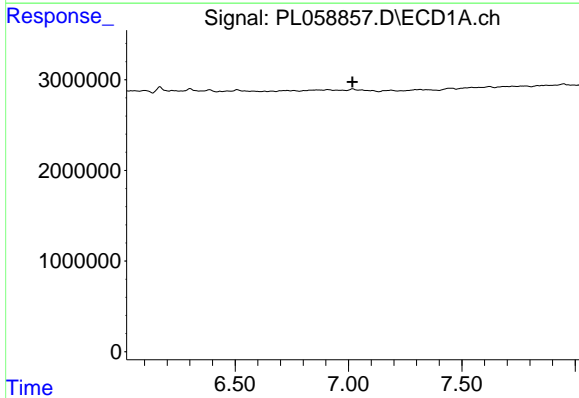
R.T.: 0.000 min
 Exp R.T. : 6.377 min
 Response: 0
 Conc: N.D.

Instrument :
 ECD_L
 ClientSampleId :



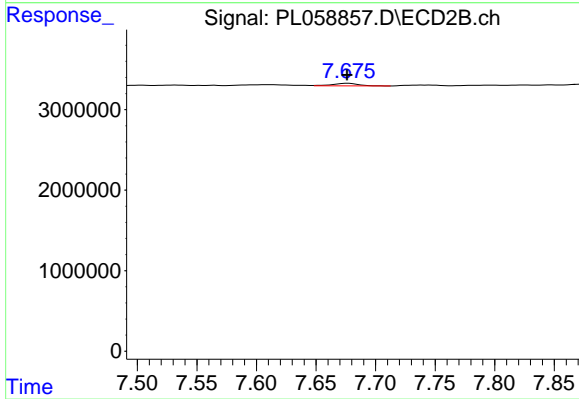
#15 Endosulfan II

R.T.: 7.012 min
 Delta R.T.: 0.003 min
 Response: 2852508
 Conc: 1.02 ng/ml



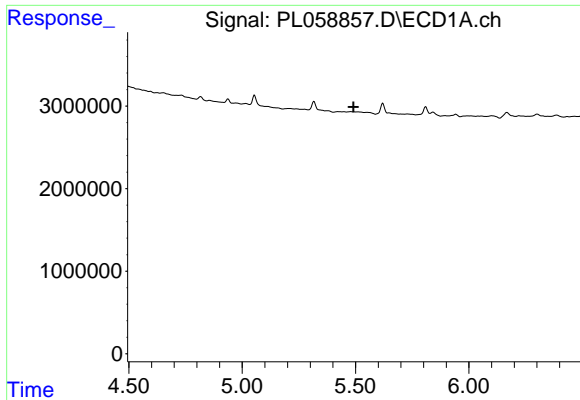
#20 Methoxychlor

R.T.: 0.000 min
 Exp R.T. : 7.018 min
 Response: 0
 Conc: N.D.



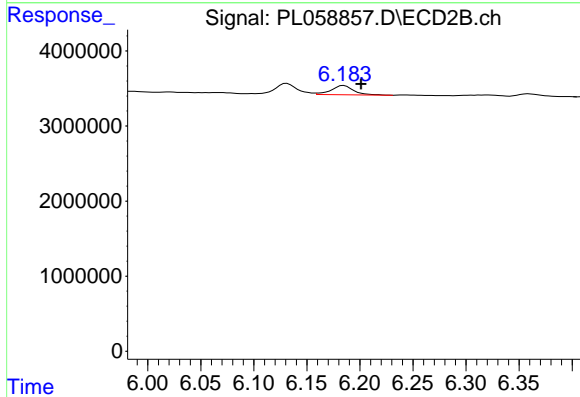
#20 Methoxychlor

R.T.: 7.677 min
 Delta R.T.: 0.000 min
 Response: 454889
 Conc: 0.33 ng/ml

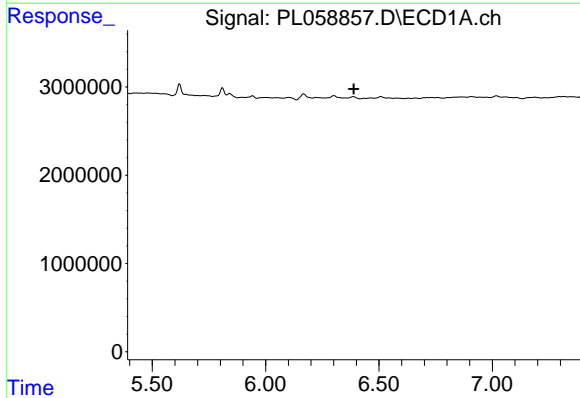


#25 Chlordane-3
 R.T.: 0.000 min
 Exp R.T. : 5.491 min
 Response: 0
 Conc: N.D.

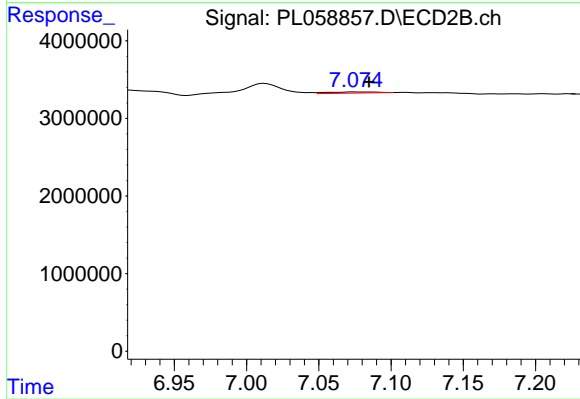
Instrument :
 ECD_L
 ClientSampled :



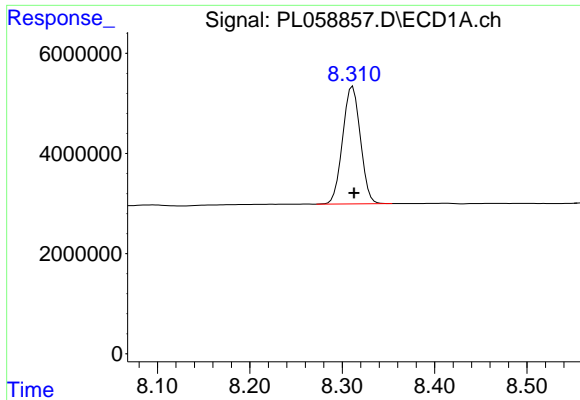
#25 Chlordane-3
 R.T.: 6.185 min
 Delta R.T.: -0.016 min
 Response: 1805026
 Conc: 4.74 ng/ml



#27 Chlordane-5
 R.T.: 0.000 min
 Exp R.T. : 6.389 min
 Response: 0
 Conc: N.D.



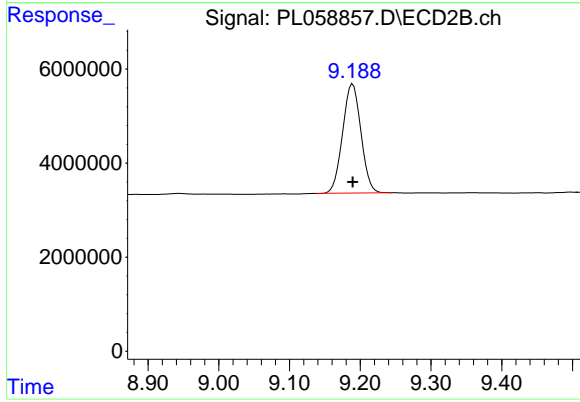
#27 Chlordane-5
 R.T.: 7.075 min
 Delta R.T.: -0.010 min
 Response: 338121
 Conc: 4.27 ng/ml



#28 Decachlorobiphenyl

R.T.: 8.311 min
Delta R.T.: -0.002 min
Response: 31391747
Conc: 18.58 ng/ml

Instrument :
ECD_L
ClientSampleId :



#28 Decachlorobiphenyl

R.T.: 9.189 min
Delta R.T.: 0.000 min
Response: 41797449
Conc: 15.86 ng/ml