

Data Path : Z:\pestpcbsrv\HPCHEM1\ECD_L\Data\PL052124\
 Data File : PL0895661.D
 Signal(s) : Signal #1: ECD1A.ch Signal #2: ECD2B.ch
 Acq On : 21 May 2024 17:32
 Operator : AR\AJ
 Sample : INDA347
 Misc :
 ALS Vial : 10 Sample Multiplier: 1

Instrument :
 ECD_L
 ClientSampleId :

Integration File signal 1: autoint1.e
 Integration File signal 2: autoint2.e
 Quant Time: May 21 22:52:21 2024
 Quant Method : Z:\pestpcbsrv\HPCHEM1\ECD_L\methods\PL051724CLP.M
 Quant Title : GC Extractables
 QLast Update : Fri May 17 15:59:18 2024
 Response via : Initial Calibration
 Integrator: ChemStation

Volume Inj. : 1 µl
 Signal #1 Phase : ZB-MR2 Signal #2 Phase: ZB-MR1
 Signal #1 Info : 30M x 0.32mm x0.2 Signal #2 Info : 30M x 0.32mm x 0.50µm

Compound	RT#1	RT#2	Resp#1	Resp#2	ng/ml	ng/ml

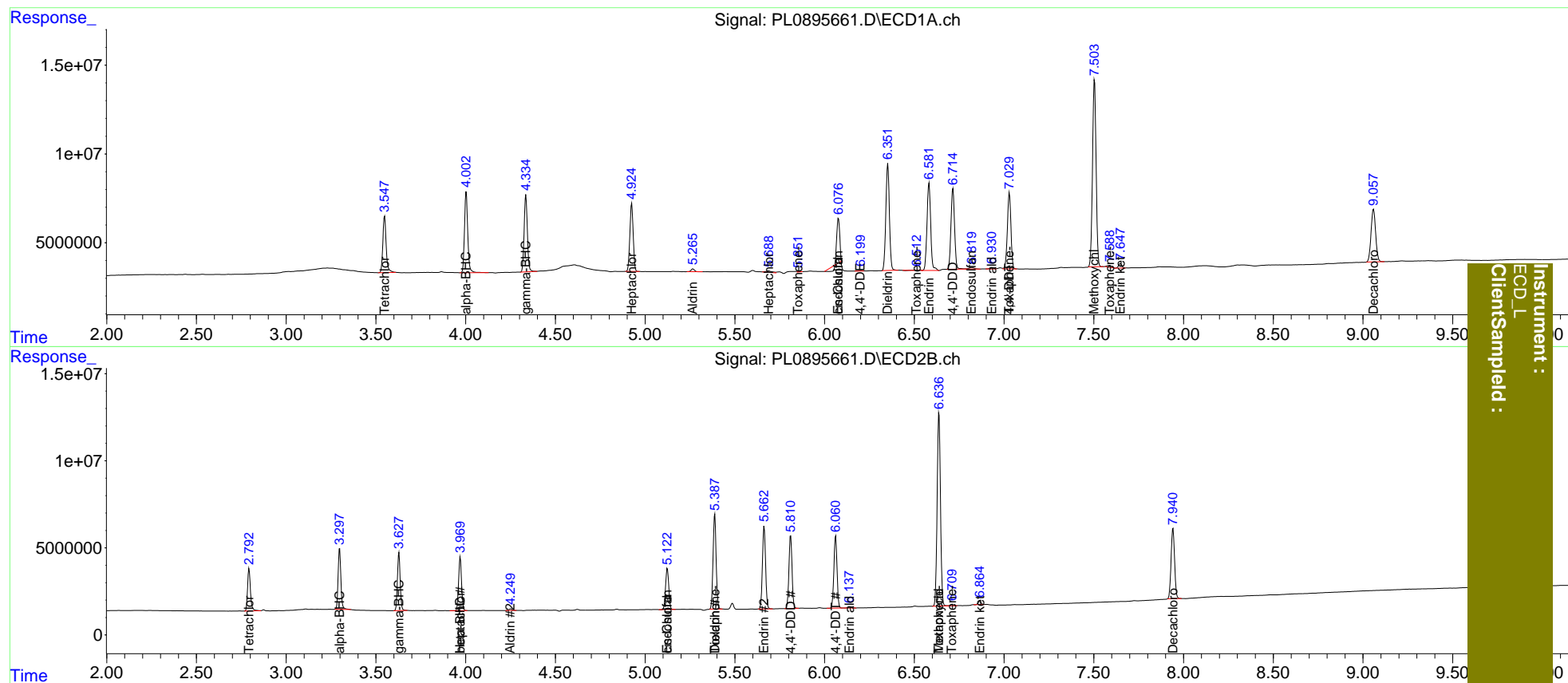
System Monitoring Compounds						
1) SA Tetrachlo...	3.548	2.793	40694874	27049493	20.925	21.079
27) SA Decachlor...	9.059	7.942	52886269	54724144	43.064	45.613
Target Compounds						
2) A alpha-BHC	4.003	3.298	57496574	37737785	20.596	20.954
3) MA gamma-BHC...	4.336	3.629	54154935	35740136	20.603	20.963
4) MA Heptachlor	4.926	3.970	49453793	35122487	20.803	20.830
5) MB Aldrin	5.266	4.251	2014235	1046513	0.839	0.652
6) B beta-BHC	0.000	3.970f	0	35122487	N.D.	40.738
8) B Heptachlo...	5.688	0.000	2032937	0	0.879	N.D. #
9) A Endosulfan I	6.077	5.124	23935946	28904924	11.925	20.809 #
11) B cis-Chlor...	6.077f	5.124f	23935946	28904924	10.950	18.177 #
12) B 4,4'-DDE	6.201	0.000	338686	0	0.185	N.D. #
13) MA Dieldrin	6.353	5.388	82750002	64957978	40.819	42.475
14) MA Endrin	6.582	5.664	70485294	57350489	41.378	41.646
15) B Endosulfa...	6.821	0.000	1746667	0	0.966	N.D. #
16) A 4,4'-DDD	6.715	5.811	63379354	50538811	43.021	44.239
17) MA 4,4'-DDT	7.030	6.062	58899927	50466393	41.940	42.046
18) B Endrin al...	6.931	6.138	1245187	1033027	0.914	0.975
20) A Methoxychlor	7.504	6.638	145.6E6	143.4E6	212.655	211.680
21) B Endrin ke...	7.648	6.865	3268834	2159536	1.878	1.469
22) Toxaphene-1	5.852	0.000	311367	0	42.022	N.D. #
23) Toxaphene-2	6.514f	5.388	440627	64957978	22.167	8011.354 #
24) Toxaphene-3	7.030f	6.638	58899927	143.4E6	1350.861	5054.630 #
25) Toxaphene-4	0.000	6.711f	0	902765	N.D.	22.872
26) Toxaphene-5	7.588	0.000	1730971	0	73.927	N.D. #

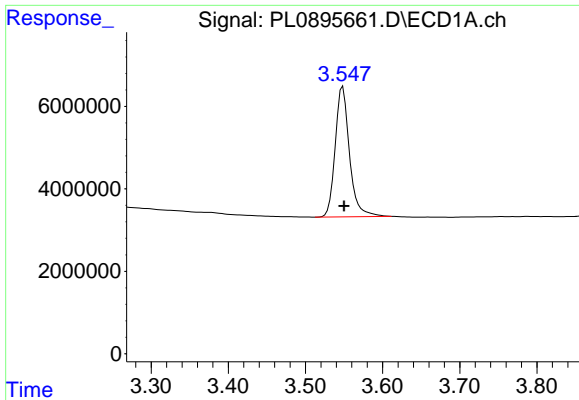
(f)=RT Delta > 1/2 Window (#)=Amounts differ by > 25% (m)=manual int.

Data Path : Z:\pestpcbsrv\HPCHEM1\ECD_L\Data\PL052124\
 Data File : PL0895661.D
 Signal(s) : Signal #1: ECD1A.ch Signal #2: ECD2B.ch
 Acq On : 21 May 2024 17:32
 Operator : AR\AJ
 Sample : INDA347
 Misc :
 ALS Vial : 10 Sample Multiplier: 1

Integration File signal 1: autoint1.e
 Integration File signal 2: autoint2.e
 Quant Time: May 21 22:52:21 2024
 Quant Method : Z:\pestpcbsrv\HPCHEM1\ECD_L\methods\PL051724CLP.M
 Quant Title : GC Extractables
 QLast Update : Fri May 17 15:59:18 2024
 Response via : Initial Calibration
 Integrator: ChemStation

Volume Inj. : 1 µl
 Signal #1 Phase : ZB-MR2 Signal #2 Phase: ZB-MR1
 Signal #1 Info : 30M x 0.32mm x0.2 Signal #2 Info : 30M x 0.32mm x 0.50µm

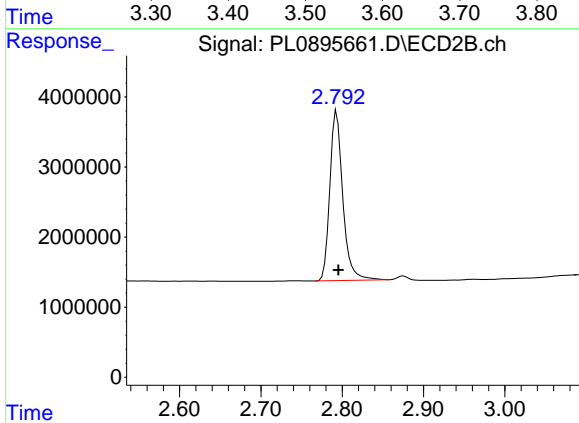




#1 Tetrachloro-m-xylene

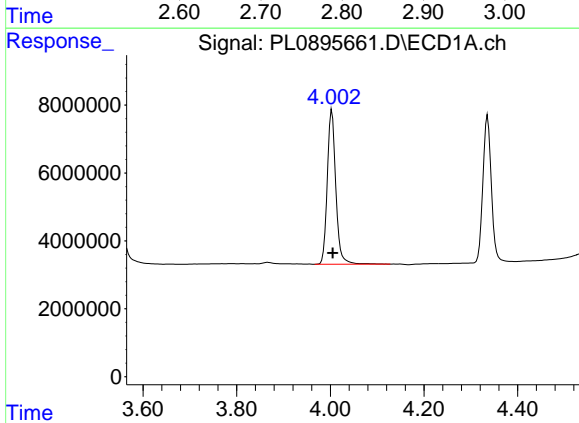
R.T.: 3.548 min
 Delta R.T.: -0.002 min
 Response: 40694874
 Conc: 20.93 ng/ml

Instrument :
 ECD_L
 ClientSampleId :



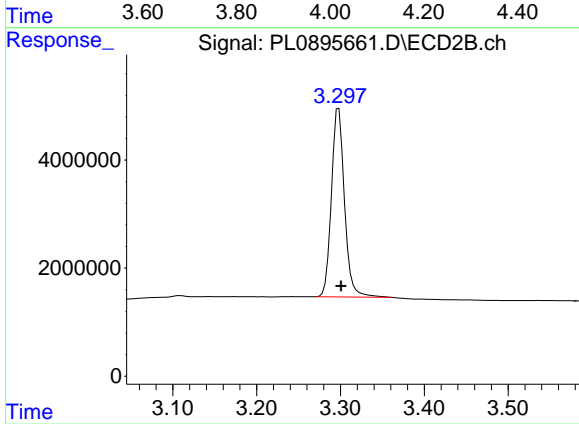
#1 Tetrachloro-m-xylene

R.T.: 2.793 min
 Delta R.T.: -0.002 min
 Response: 27049493
 Conc: 21.08 ng/ml



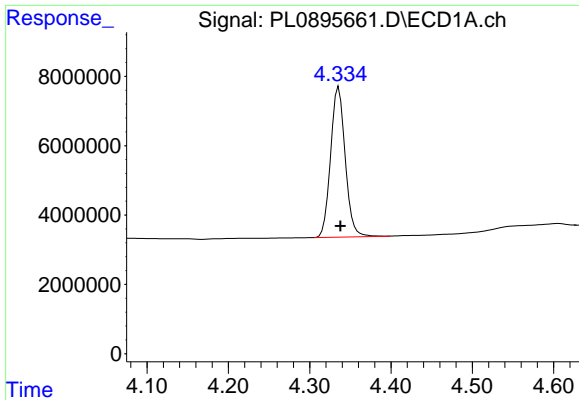
#2 alpha-BHC

R.T.: 4.003 min
 Delta R.T.: -0.002 min
 Response: 57496574
 Conc: 20.60 ng/ml



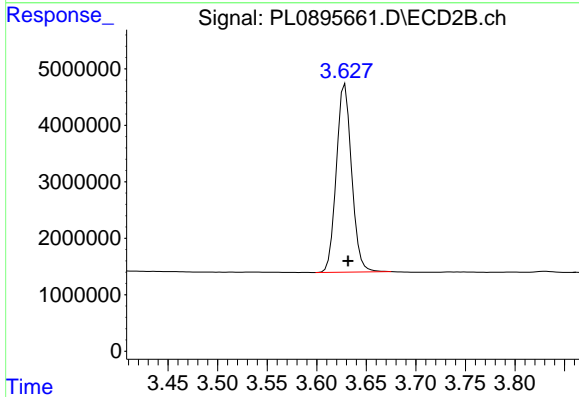
#2 alpha-BHC

R.T.: 3.298 min
 Delta R.T.: -0.003 min
 Response: 37737785
 Conc: 20.95 ng/ml

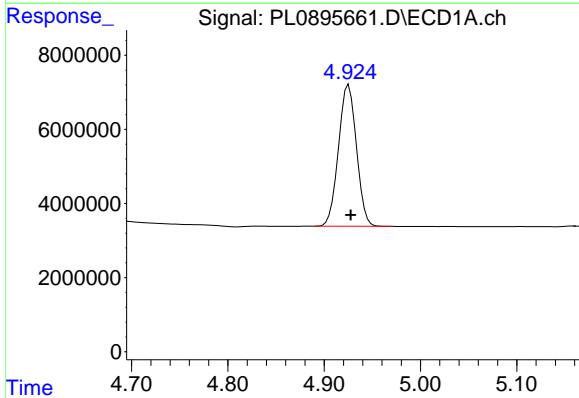


#3 gamma-BHC (Lindane)
 R.T.: 4.336 min
 Delta R.T.: -0.002 min
 Response: 54154935
 Conc: 20.60 ng/ml

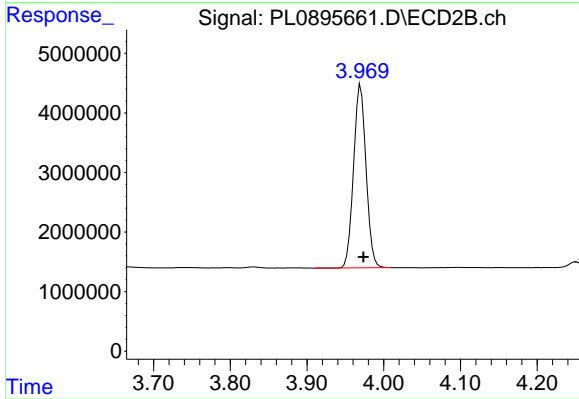
Instrument :
 ECD_L
 ClientSampleId :



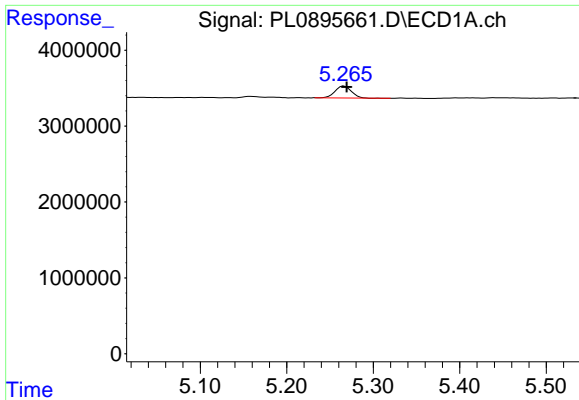
#3 gamma-BHC (Lindane)
 R.T.: 3.629 min
 Delta R.T.: -0.003 min
 Response: 35740136
 Conc: 20.96 ng/ml



#4 Heptachlor
 R.T.: 4.926 min
 Delta R.T.: -0.002 min
 Response: 49453793
 Conc: 20.80 ng/ml

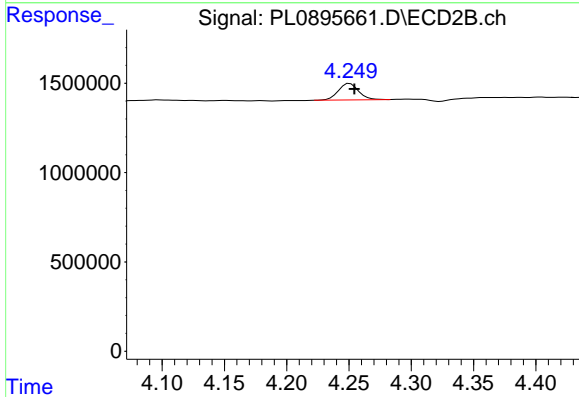


#4 Heptachlor
 R.T.: 3.970 min
 Delta R.T.: -0.003 min
 Response: 35122487
 Conc: 20.83 ng/ml

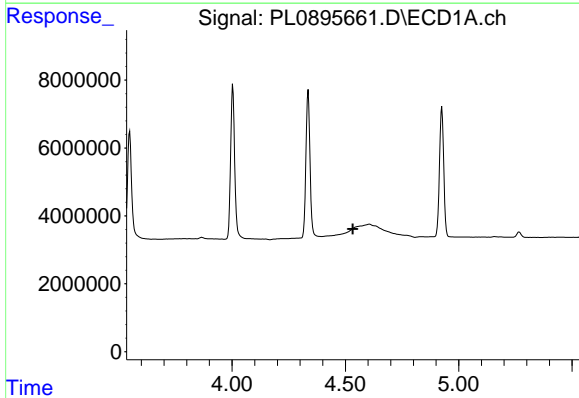


#5 Aldrin
 R.T.: 5.266 min
 Delta R.T.: -0.003 min
 Response: 2014235
 Conc: 0.84 ng/ml

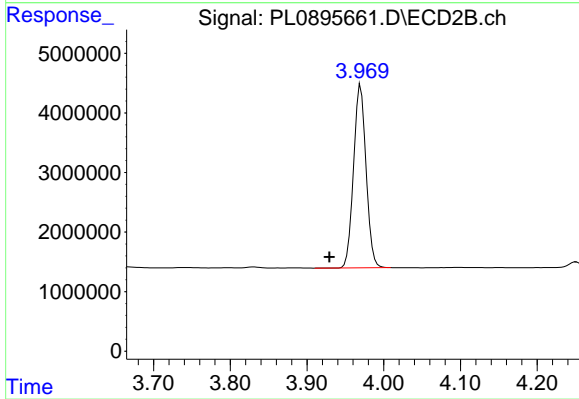
Instrument :
 ECD_L
 ClientSampleId :



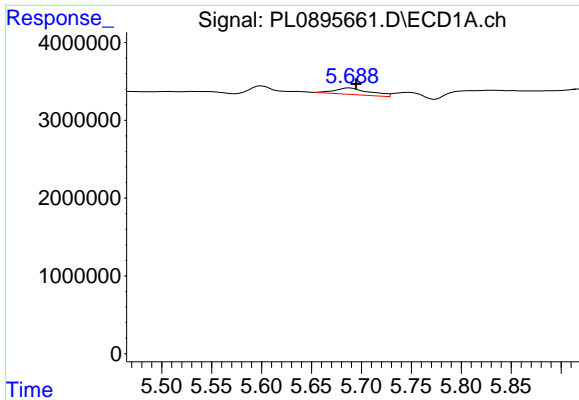
#5 Aldrin
 R.T.: 4.251 min
 Delta R.T.: -0.004 min
 Response: 1046513
 Conc: 0.65 ng/ml



#6 beta-BHC
 R.T.: 0.000 min
 Exp R.T. : 4.533 min
 Response: 0
 Conc: N.D.

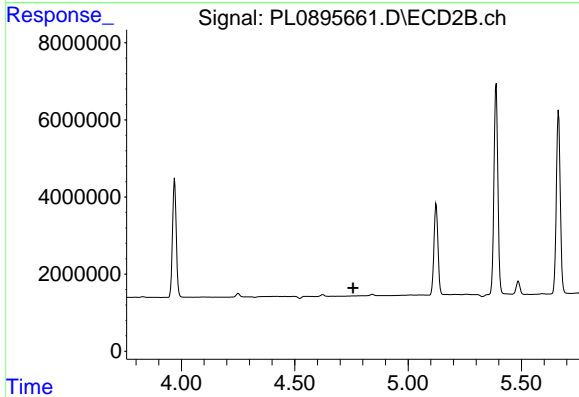


#6 beta-BHC
 R.T.: 3.970 min
 Delta R.T.: 0.041 min
 Response: 35122487
 Conc: 40.74 ng/ml

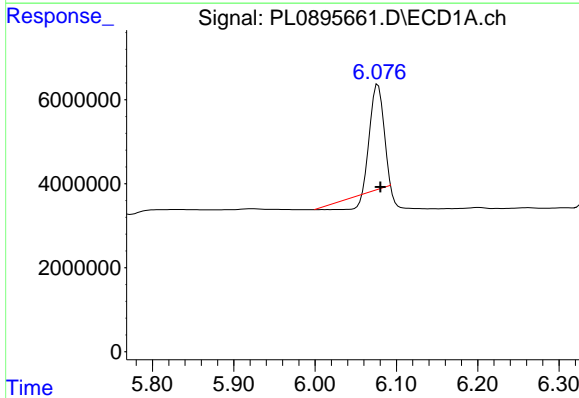


#8 Heptachlor epoxide
 R.T.: 5.688 min
 Delta R.T.: -0.007 min
 Response: 2032937
 Conc: 0.88 ng/ml

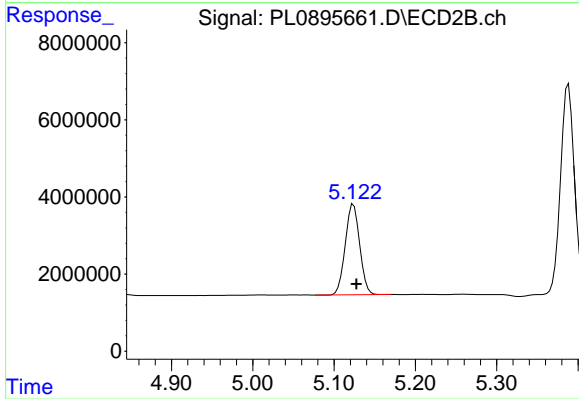
Instrument :
 ECD_L
 ClientSampleId :



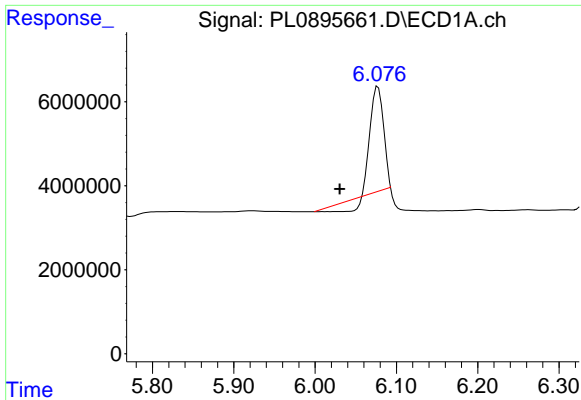
#8 Heptachlor epoxide
 R.T.: 0.000 min
 Exp R.T. : 4.757 min
 Response: 0
 Conc: N.D.



#9 Endosulfan I
 R.T.: 6.077 min
 Delta R.T.: -0.003 min
 Response: 23935946
 Conc: 11.92 ng/ml



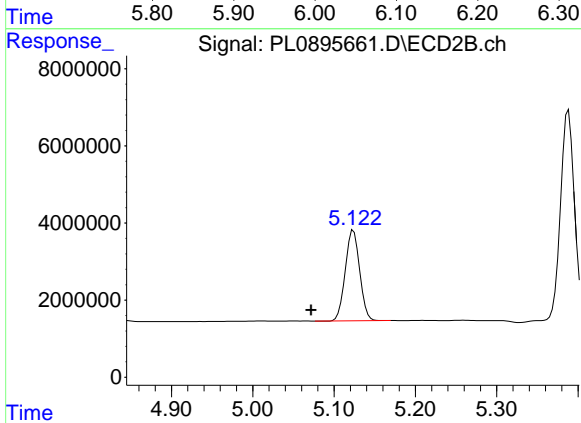
#9 Endosulfan I
 R.T.: 5.124 min
 Delta R.T.: -0.004 min
 Response: 28904924
 Conc: 20.81 ng/ml



#11 cis-Chlordane

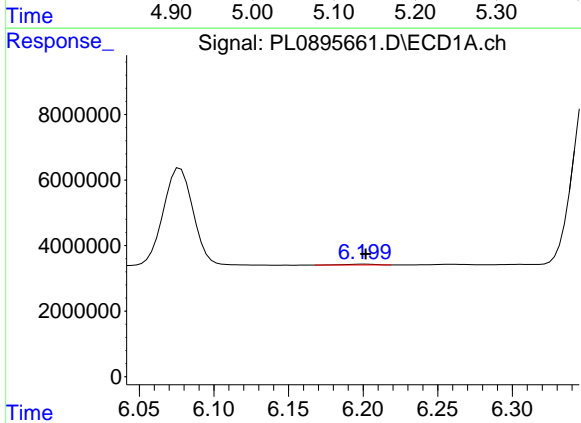
R.T.: 6.077 min
 Delta R.T.: 0.047 min
 Response: 23935946
 Conc: 10.95 ng/ml

Instrument :
 ECD_L
 ClientSampleId :



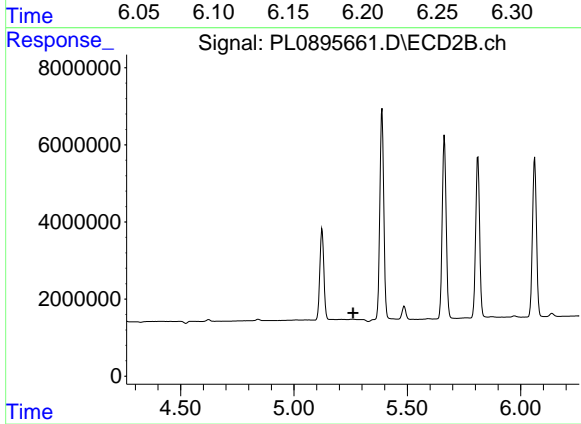
#11 cis-Chlordane

R.T.: 5.124 min
 Delta R.T.: 0.052 min
 Response: 28904924
 Conc: 18.18 ng/ml



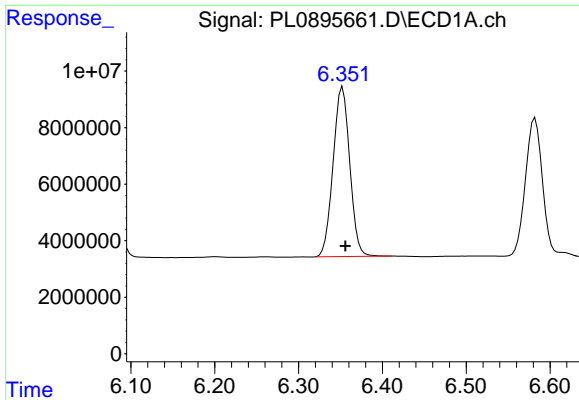
#12 4,4'-DDE

R.T.: 6.201 min
 Delta R.T.: -0.001 min
 Response: 338686
 Conc: 0.19 ng/ml



#12 4,4'-DDE

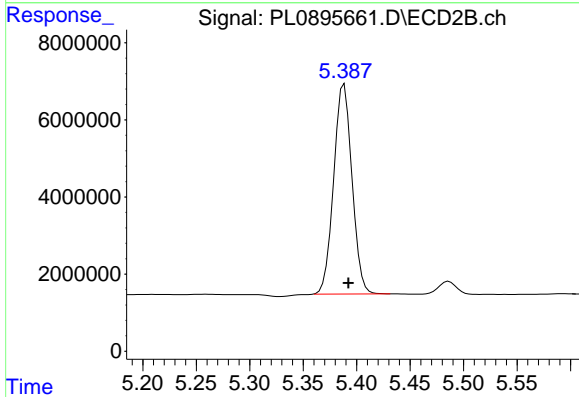
R.T.: 0.000 min
 Exp R.T. : 5.261 min
 Response: 0
 Conc: N.D.



#13 Dieldrin

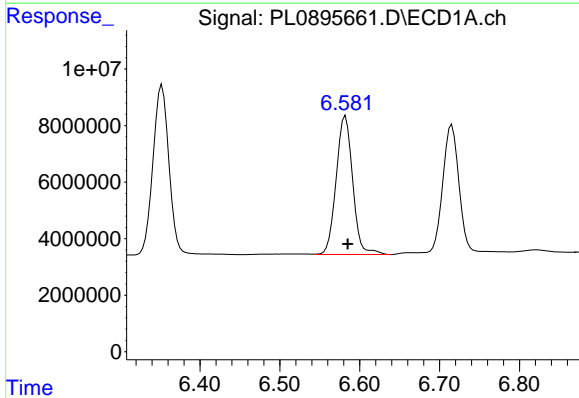
R.T.: 6.353 min
 Delta R.T.: -0.003 min
 Response: 82750002
 Conc: 40.82 ng/ml

Instrument :
 ECD_L
 ClientSampleId :



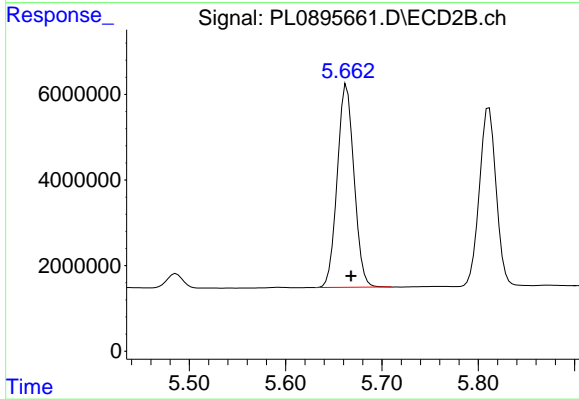
#13 Dieldrin

R.T.: 5.388 min
 Delta R.T.: -0.004 min
 Response: 64957978
 Conc: 42.47 ng/ml



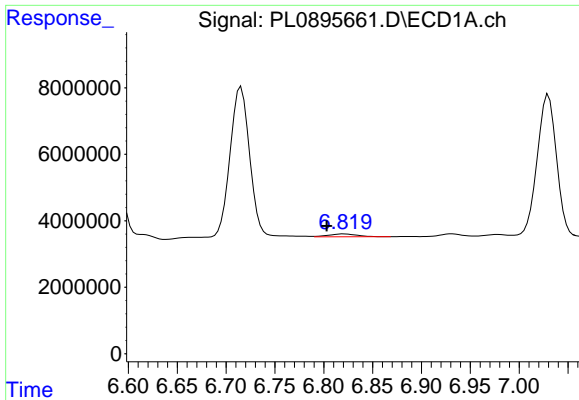
#14 Endrin

R.T.: 6.582 min
 Delta R.T.: -0.003 min
 Response: 70485294
 Conc: 41.38 ng/ml



#14 Endrin

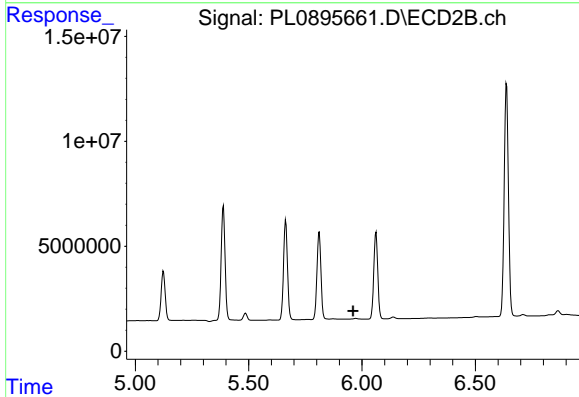
R.T.: 5.664 min
 Delta R.T.: -0.004 min
 Response: 57350489
 Conc: 41.65 ng/ml



#15 Endosulfan II

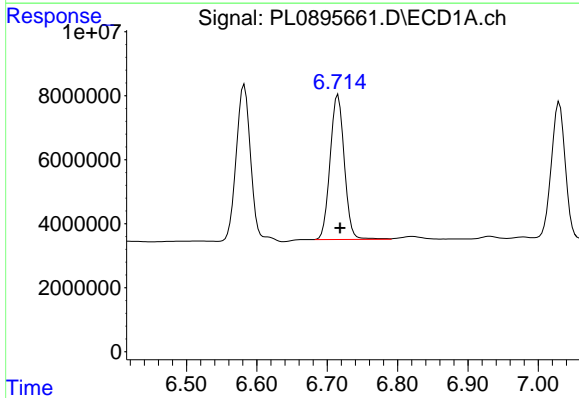
R.T.: 6.821 min
 Delta R.T.: 0.018 min
 Response: 1746667
 Conc: 0.97 ng/ml

Instrument :
 ECD_L
 ClientSampleId :



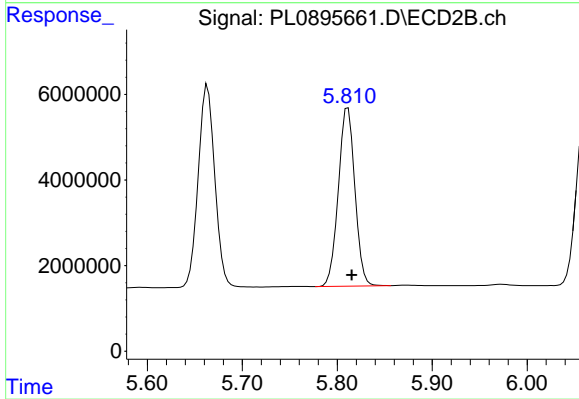
#15 Endosulfan II

R.T.: 0.000 min
 Exp R.T. : 5.961 min
 Response: 0
 Conc: N.D.



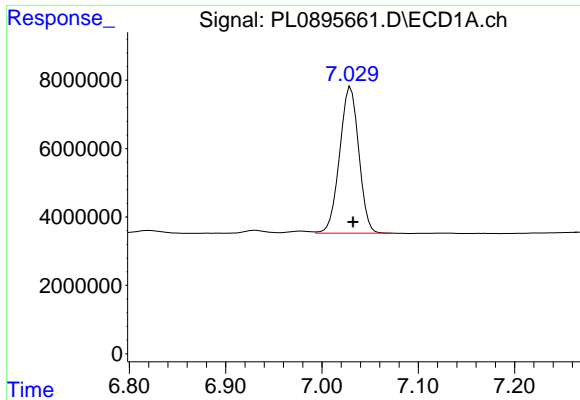
#16 4,4'-DDD

R.T.: 6.715 min
 Delta R.T.: -0.003 min
 Response: 63379354
 Conc: 43.02 ng/ml



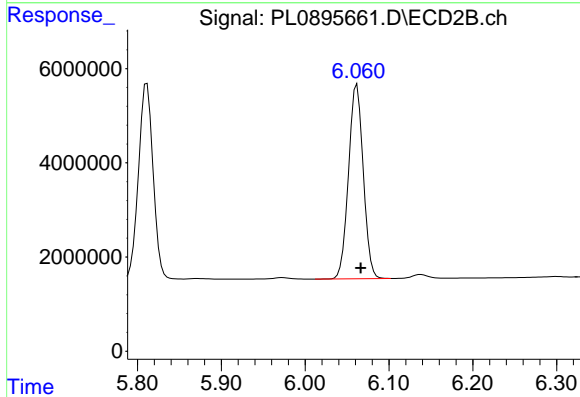
#16 4,4'-DDD

R.T.: 5.811 min
 Delta R.T.: -0.004 min
 Response: 50538811
 Conc: 44.24 ng/ml

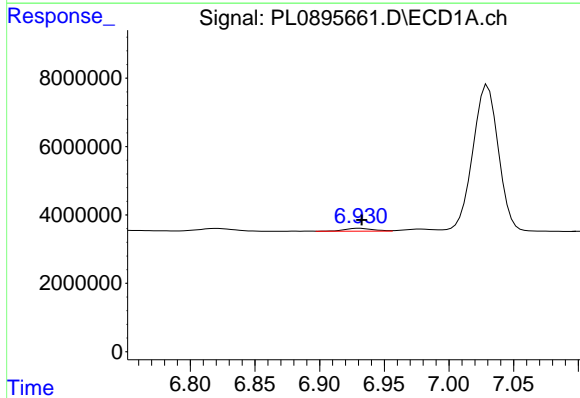


#17 4,4'-DDT
 R.T.: 7.030 min
 Delta R.T.: -0.002 min
 Response: 58899927
 Conc: 41.94 ng/ml

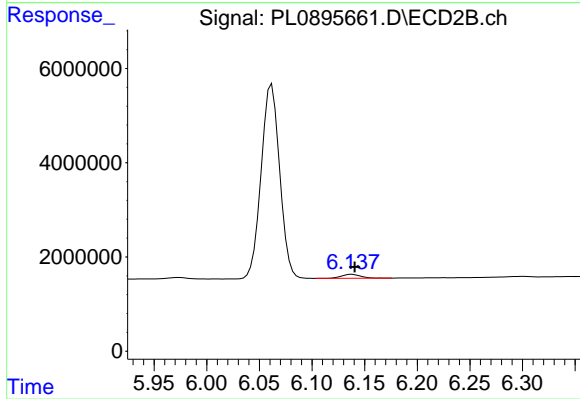
Instrument :
 ECD_L
 ClientSampleId :



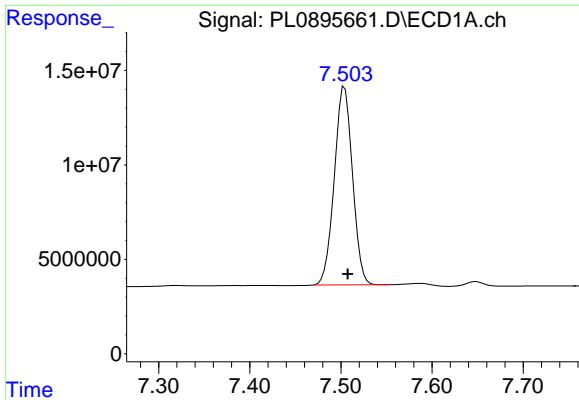
#17 4,4'-DDT
 R.T.: 6.062 min
 Delta R.T.: -0.004 min
 Response: 50466393
 Conc: 42.05 ng/ml



#18 Endrin aldehyde
 R.T.: 6.931 min
 Delta R.T.: -0.001 min
 Response: 1245187
 Conc: 0.91 ng/ml



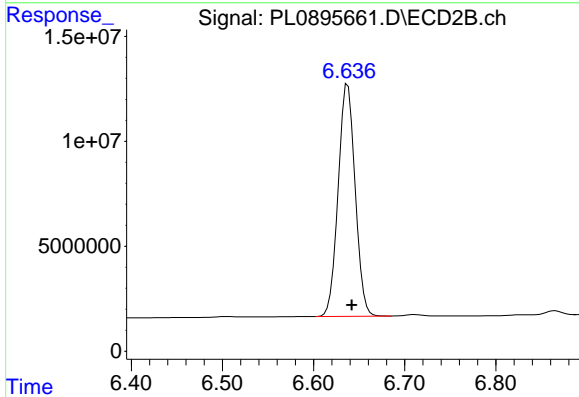
#18 Endrin aldehyde
 R.T.: 6.138 min
 Delta R.T.: -0.003 min
 Response: 1033027
 Conc: 0.97 ng/ml



#20 Methoxychlor

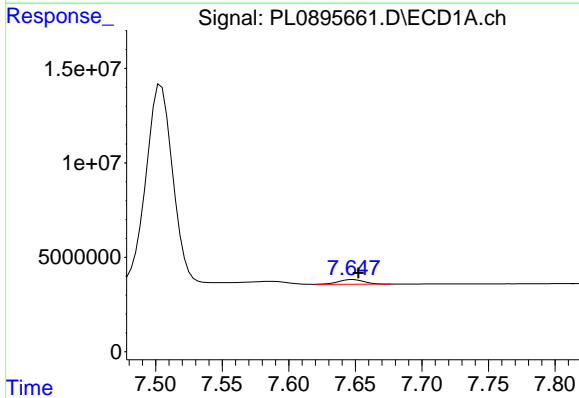
R.T.: 7.504 min
 Delta R.T.: -0.003 min
 Response: 145553874
 Conc: 212.66 ng/ml

Instrument :
 ECD_L
 ClientSampleId :



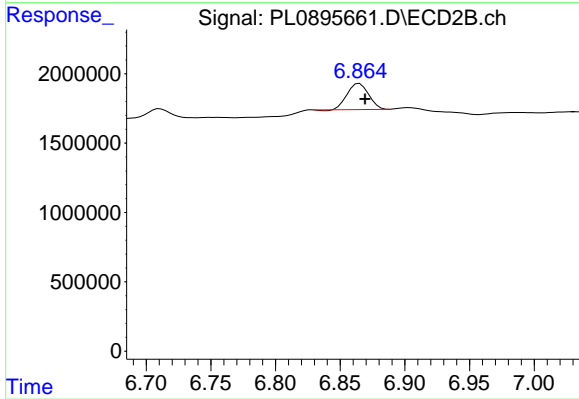
#20 Methoxychlor

R.T.: 6.638 min
 Delta R.T.: -0.004 min
 Response: 143381148
 Conc: 211.68 ng/ml



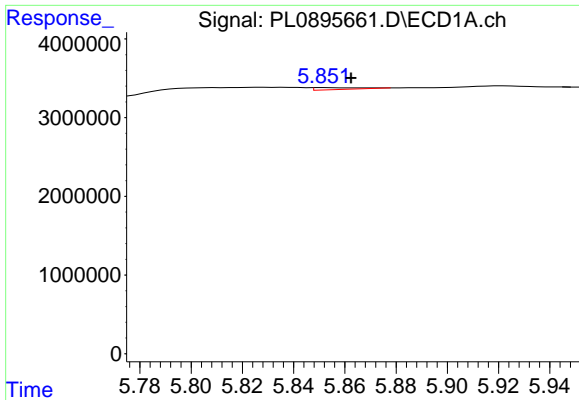
#21 Endrin ketone

R.T.: 7.648 min
 Delta R.T.: -0.004 min
 Response: 3268834
 Conc: 1.88 ng/ml



#21 Endrin ketone

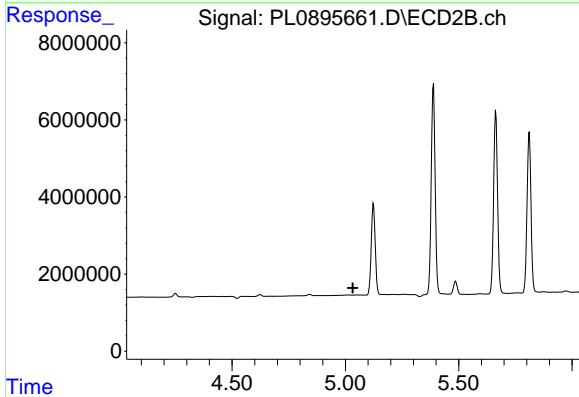
R.T.: 6.865 min
 Delta R.T.: -0.004 min
 Response: 2159536
 Conc: 1.47 ng/ml



#22 Toxaphene-1

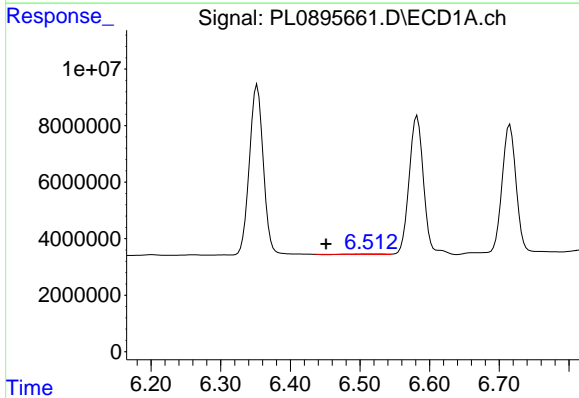
R.T.: 5.852 min
 Delta R.T.: -0.010 min
 Response: 311367
 Conc: 42.02 ng/ml

Instrument :
 ECD_L
 ClientSampleId :



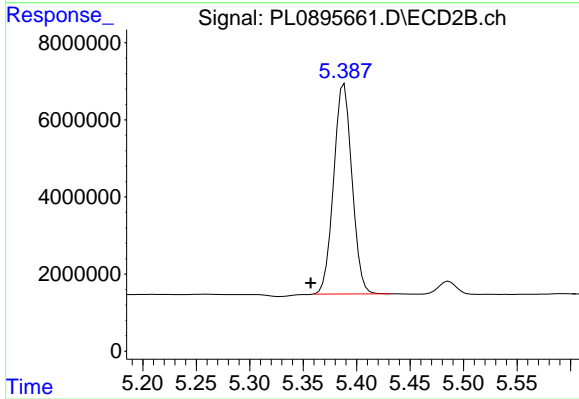
#22 Toxaphene-1

R.T.: 0.000 min
 Exp R.T. : 5.032 min
 Response: 0
 Conc: N.D.



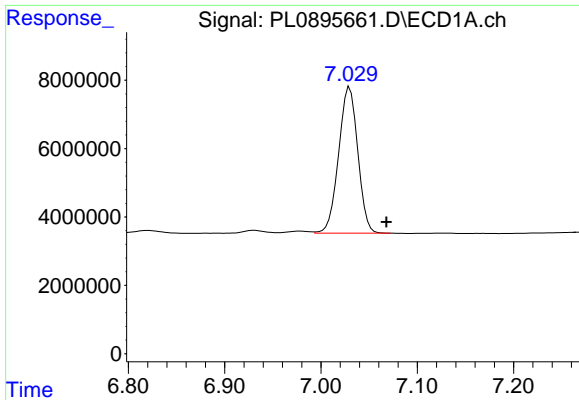
#23 Toxaphene-2

R.T.: 6.514 min
 Delta R.T.: 0.062 min
 Response: 440627
 Conc: 22.17 ng/ml



#23 Toxaphene-2

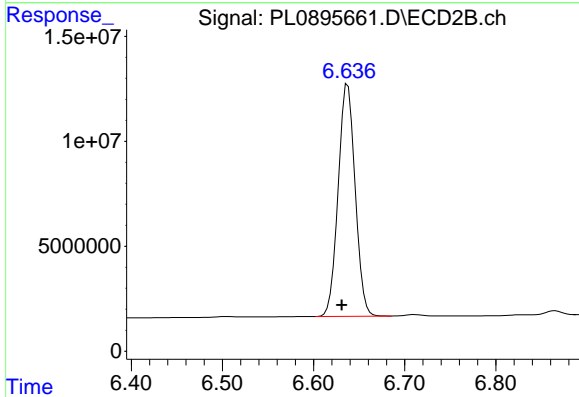
R.T.: 5.388 min
 Delta R.T.: 0.031 min
 Response: 64957978
 Conc: 8011.35 ng/ml



#24 Toxaphene-3

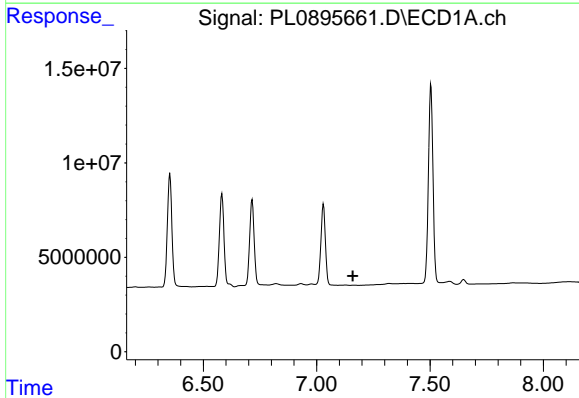
R.T.: 7.030 min
 Delta R.T.: -0.038 min
 Response: 58899927
 Conc: 1350.86 ng/ml

Instrument :
 ECD_L
 ClientSampleId :



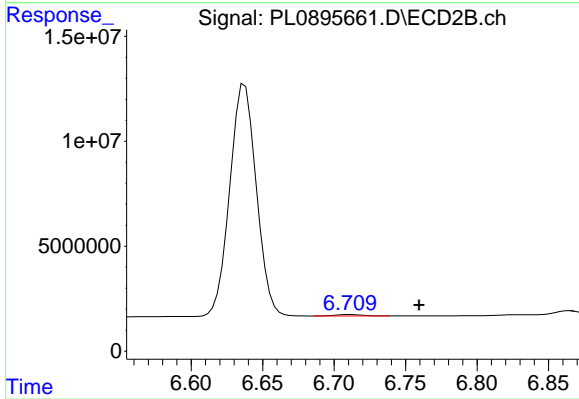
#24 Toxaphene-3

R.T.: 6.638 min
 Delta R.T.: 0.006 min
 Response: 143381148
 Conc: 5054.63 ng/ml



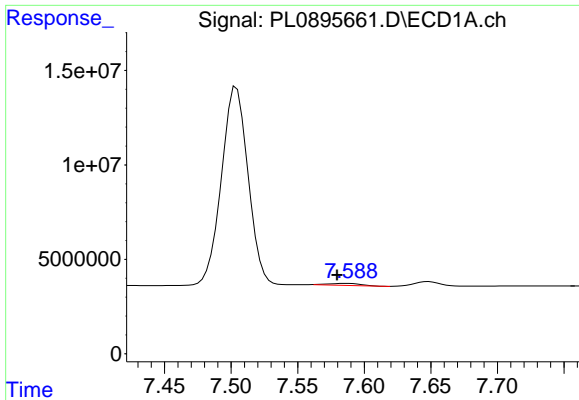
#25 Toxaphene-4

R.T.: 0.000 min
 Exp R.T. : 7.159 min
 Response: 0
 Conc: N.D.



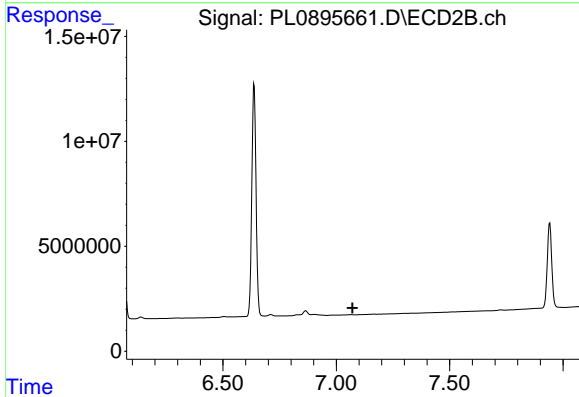
#25 Toxaphene-4

R.T.: 6.711 min
 Delta R.T.: -0.049 min
 Response: 902765
 Conc: 22.87 ng/ml

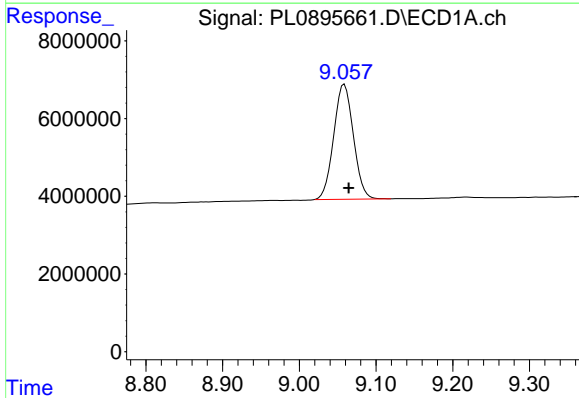


#26 Toxaphene-5
 R.T.: 7.588 min
 Delta R.T.: 0.008 min
 Response: 1730971
 Conc: 73.93 ng/ml

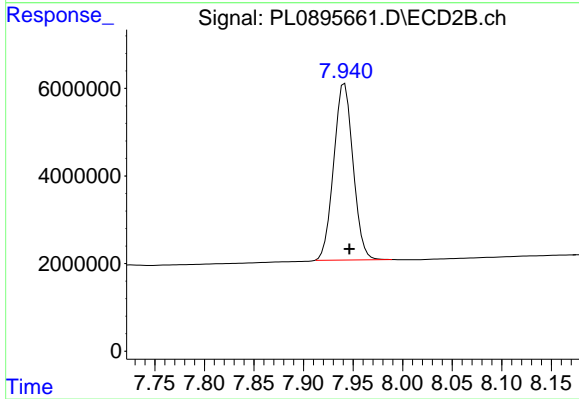
Instrument :
 ECD_L
 ClientSampleId :



#26 Toxaphene-5
 R.T.: 0.000 min
 Exp R.T. : 7.072 min
 Response: 0
 Conc: N.D.



#27 Decachlorobiphenyl
 R.T.: 9.059 min
 Delta R.T.: -0.006 min
 Response: 52886269
 Conc: 43.06 ng/ml



#27 Decachlorobiphenyl
 R.T.: 7.942 min
 Delta R.T.: -0.005 min
 Response: 54724144
 Conc: 45.61 ng/ml