

Data Path : Z:\pestpcbsrv\HPCHEM1\ECD_L\Data\PL052125\
 Data File : PL095738.D
 Signal(s) : Signal #1: ECD1A.ch Signal #2: ECD2B.ch
 Acq On : 21 May 2025 12:15
 Operator : AR\AJ
 Sample : PSTDICC025
 Misc :
 ALS Vial : 8 Sample Multiplier: 1

Instrument :
 ECD_L
 ClientSampleId :
 PSTDICC025

Integration File signal 1: autoint1.e
 Integration File signal 2: autoint2.e
 Quant Time: May 22 06:18:08 2025
 Quant Method : Z:\pestpcbsrv\HPCHEM1\ECD_L\methods\PL052125.M
 Quant Title : GC Extractables
 QLast Update : Thu May 22 06:14:04 2025
 Response via : Initial Calibration
 Integrator: ChemStation

Volume Inj. : 1 µl
 Signal #1 Phase : ZB-MR2 Signal #2 Phase: ZB-MR2
 Signal #1 Info : 30M x 0.32mm x0.5 Signal #2 Info : 30M x 0.32mm x0.25µm

Compound	RT#1	RT#2	Resp#1	Resp#2	ng/ml	ng/ml
System Monitoring Compounds						
1) SA Tetrachlo...	3.572	2.886	76560586	94950949	24.972	24.682
28) SA Decachlor...	9.102	8.063	58871383	110.2E6	25.548	24.905
Target Compounds						
2) A alpha-BHC	4.024	3.396	114.6E6	139.2E6	23.873	23.369
3) MA gamma-BHC...	4.356	3.730	106.1E6	133.9E6	24.117	23.682
4) MA Heptachlor	4.954	4.083	90572384	135.5E6	24.337	24.151
5) MB Aldrin	5.297	4.368	102.0E6	127.4E6	24.216	23.763
6) B beta-BHC	4.543	4.026	48288222	60913646	25.017	24.648
7) B delta-BHC	4.791	4.261	105.8E6	135.3E6	24.143	23.732
8) B Heptachlo...	5.718	4.871	92052683	120.3E6	24.672	24.327
9) A Endosulfan I	6.101	5.243	88752148	116.7E6	24.695	24.479
10) B gamma-Chl...	5.973	5.123	93872153	126.7E6	24.412	24.216
11) B alpha-Chl...	6.053	5.187	95402335	126.5E6	24.652	24.466
12) B 4,4'-DDE	6.224	5.374	87244934	129.6E6	24.023	24.262
13) MA Dieldrin	6.374	5.508	92714141	127.6E6	24.310	24.090
14) MA Endrin	6.602	5.783	77907657	118.3E6	24.458	24.444
15) B Endosulfa...	6.814	6.073	84624751	115.3E6	25.447	24.408
16) A 4,4'-DDD	6.733	5.926	70145317	105.7E6	24.266	24.009
17) MA 4,4'-DDT	7.049	6.180	64751863	115.9E6	24.429	24.121
18) B Endrin al...	6.943	6.251	58843793	84135949	24.874	24.615
19) B Endosulfa...	7.177	6.475	72659491	110.3E6	24.828	24.637
20) A Methoxychlor	7.521	6.750	31284485	65690870	24.800	25.339
21) B Endrin ke...	7.659	6.980	76583035	127.4E6	24.421	24.674
22) Mirex	8.140	7.174	57020908	100.8E6	25.094	25.271

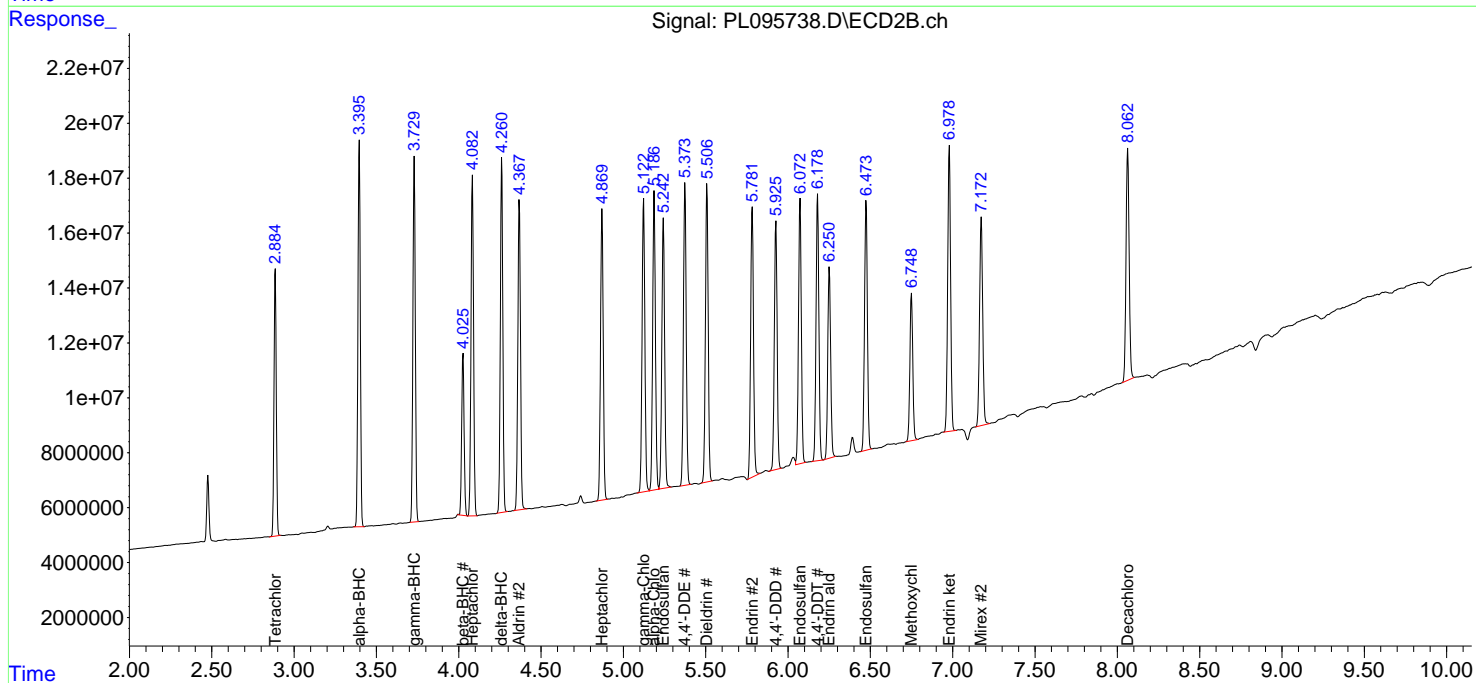
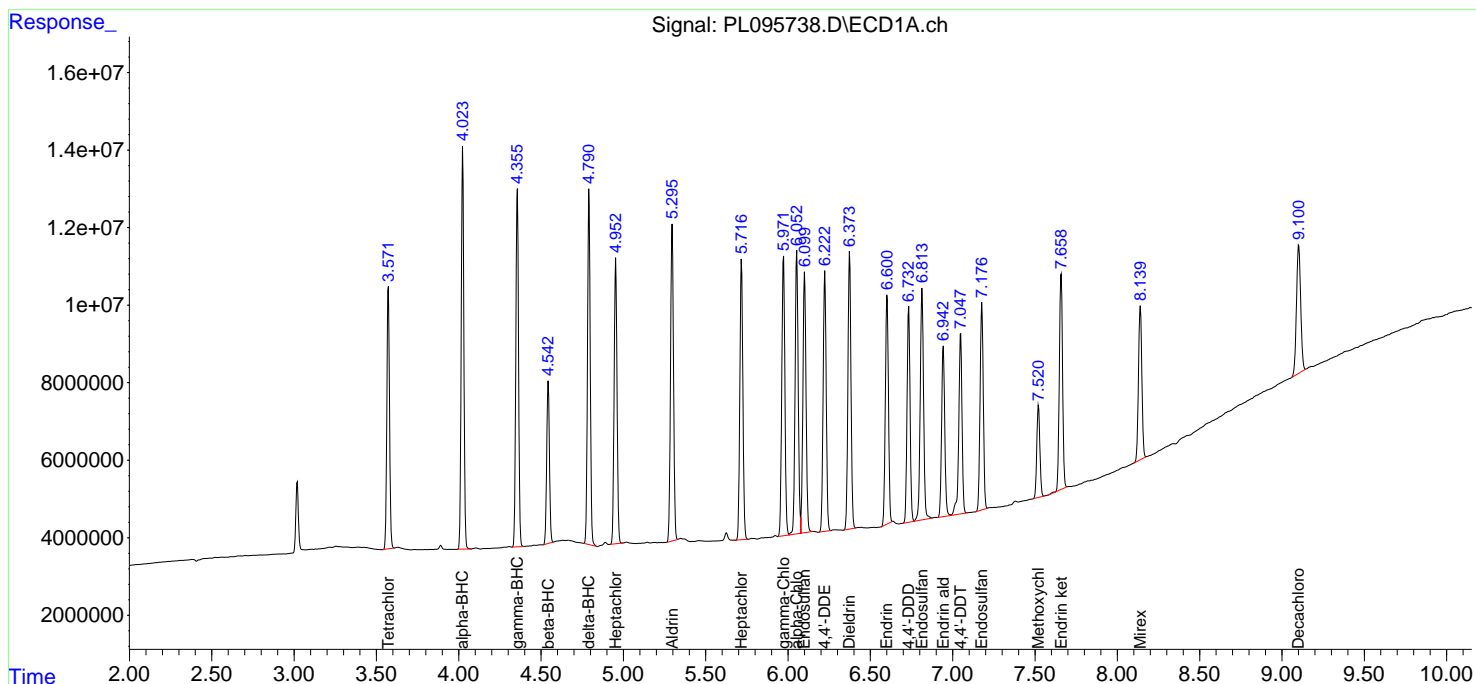
(f)=RT Delta > 1/2 Window (#)=Amounts differ by > 25% (m)=manual int.

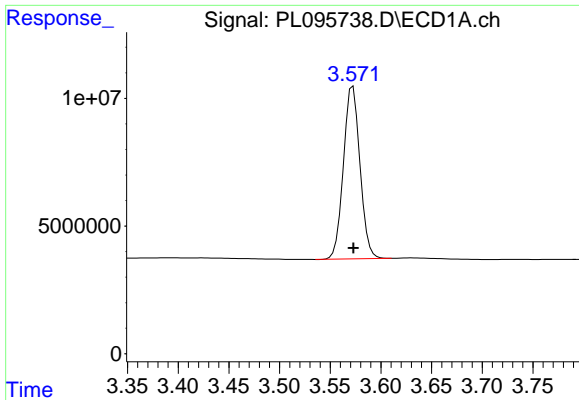
Data Path : Z:\pestpcbsrv\HPCHEM1\ECD_L\Data\PL052125\
 Data File : PL095738.D
 Signal(s) : Signal #1: ECD1A.ch Signal #2: ECD2B.ch
 Acq On : 21 May 2025 12:15
 Operator : AR\AJ
 Sample : PSTDICC025
 Misc :
 ALS Vial : 8 Sample Multiplier: 1

Instrument :
 ECD_L
 ClientSampleId :
 PSTDICC025

Integration File signal 1: autoint1.e
 Integration File signal 2: autoint2.e
 Quant Time: May 22 06:18:08 2025
 Quant Method : Z:\pestpcbsrv\HPCHEM1\ECD_L\methods\PL052125.M
 Quant Title : GC Extractables
 QLast Update : Thu May 22 06:14:04 2025
 Response via : Initial Calibration
 Integrator: ChemStation

Volume Inj. : 1 µl
 Signal #1 Phase : ZB-MR1 Signal #2 Phase: ZB-MR2
 Signal #1 Info : 30M x 0.32mm x0.5 Signal #2 Info : 30M x 0.32mm x0.25µm

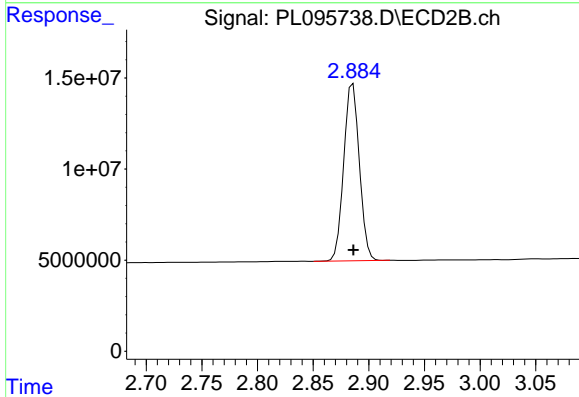




#1 Tetrachloro-m-xylene

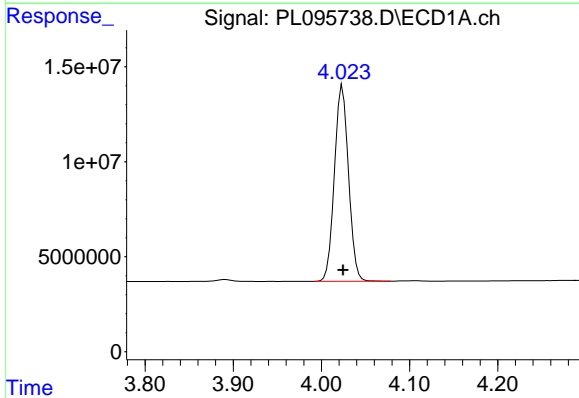
R.T.: 3.572 min
 Delta R.T.: 0.000 min
 Response: 76560586
 Conc: 24.97 ng/ml

Instrument :
 ECD_L
 ClientSampleId :
 PSTDICC025



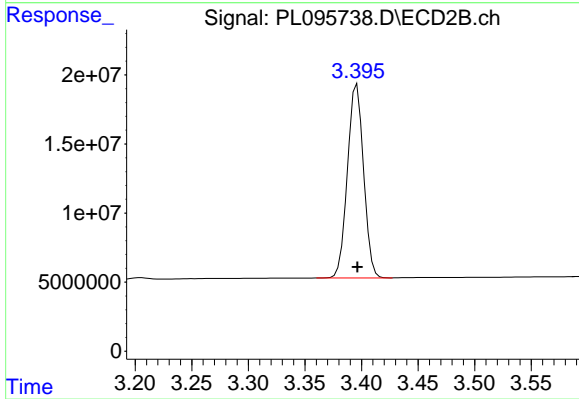
#1 Tetrachloro-m-xylene

R.T.: 2.886 min
 Delta R.T.: 0.000 min
 Response: 94950949
 Conc: 24.68 ng/ml



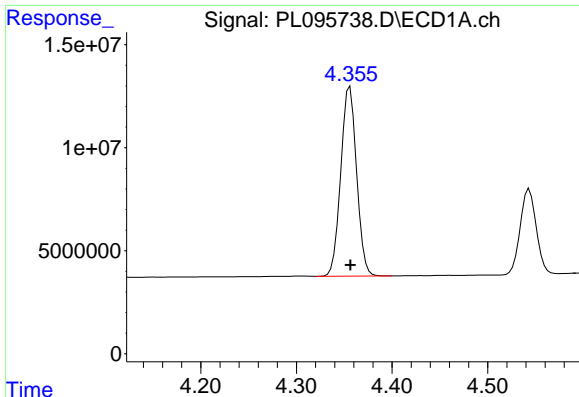
#2 alpha-BHC

R.T.: 4.024 min
 Delta R.T.: 0.000 min
 Response: 114585864
 Conc: 23.87 ng/ml



#2 alpha-BHC

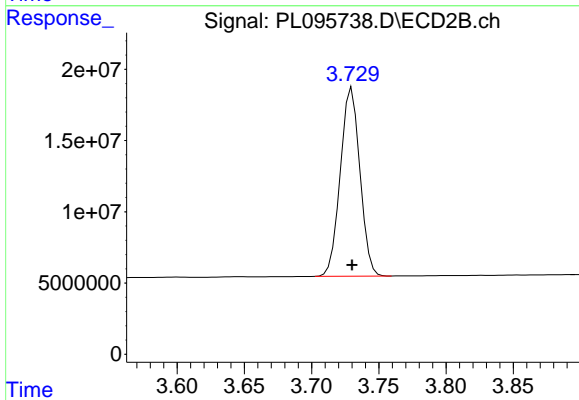
R.T.: 3.396 min
 Delta R.T.: 0.000 min
 Response: 139199253
 Conc: 23.37 ng/ml



#3 gamma-BHC (Lindane)

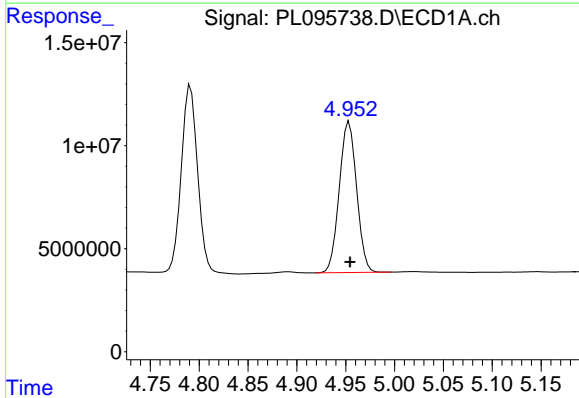
R.T.: 4.356 min
 Delta R.T.: 0.000 min
 Response: 106135149
 Conc: 24.12 ng/ml

Instrument :
 ECD_L
 ClientSampleId :
 PSTDICC025



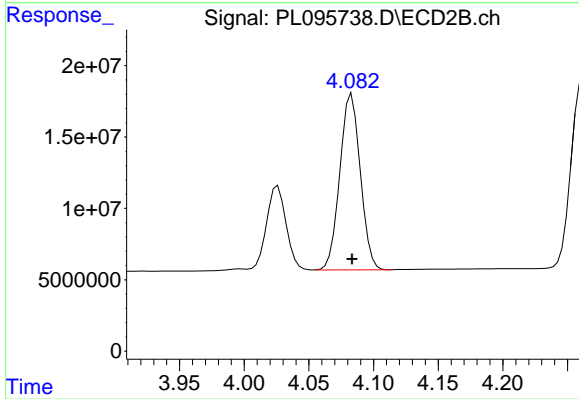
#3 gamma-BHC (Lindane)

R.T.: 3.730 min
 Delta R.T.: 0.000 min
 Response: 133853252
 Conc: 23.68 ng/ml



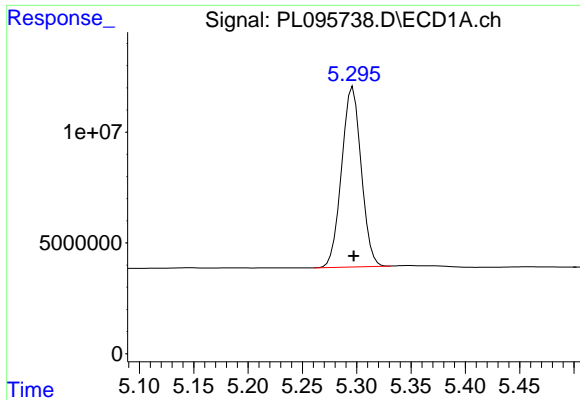
#4 Heptachlor

R.T.: 4.954 min
 Delta R.T.: 0.000 min
 Response: 90572384
 Conc: 24.34 ng/ml



#4 Heptachlor

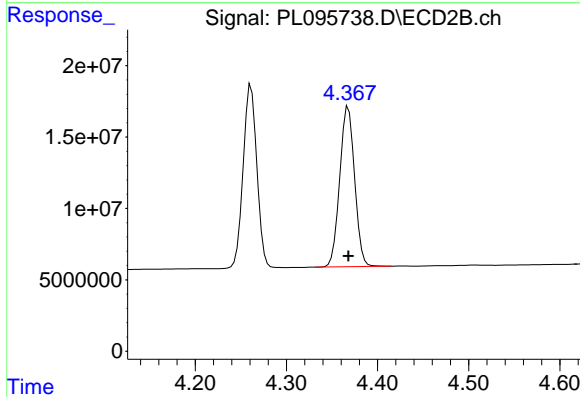
R.T.: 4.083 min
 Delta R.T.: 0.000 min
 Response: 135531388
 Conc: 24.15 ng/ml



#5 Aldrin

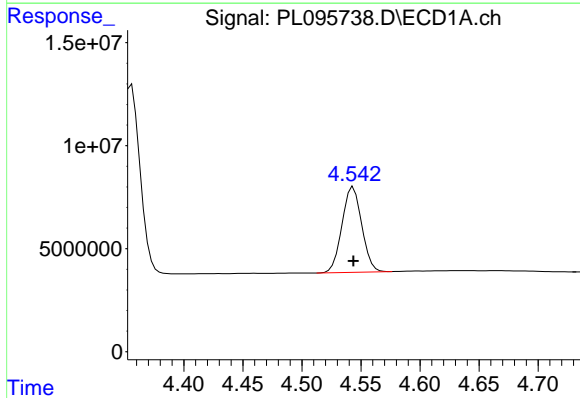
R.T.: 5.297 min
 Delta R.T.: 0.000 min
 Response: 101979772
 Conc: 24.22 ng/ml

Instrument :
 ECD_L
 ClientSampleId :
 PSTDICC025



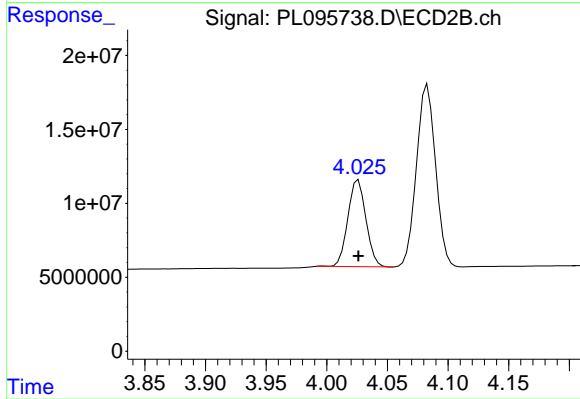
#5 Aldrin

R.T.: 4.368 min
 Delta R.T.: 0.000 min
 Response: 127353124
 Conc: 23.76 ng/ml



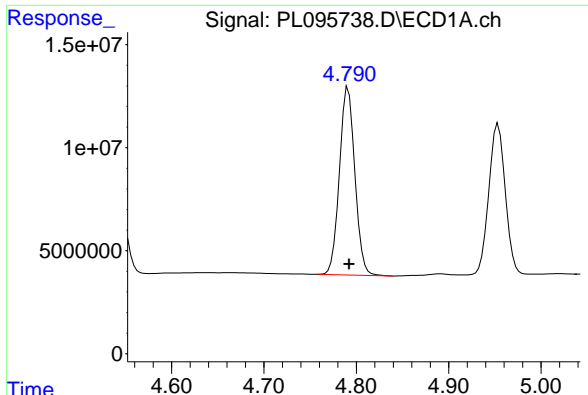
#6 beta-BHC

R.T.: 4.543 min
 Delta R.T.: 0.000 min
 Response: 48288222
 Conc: 25.02 ng/ml



#6 beta-BHC

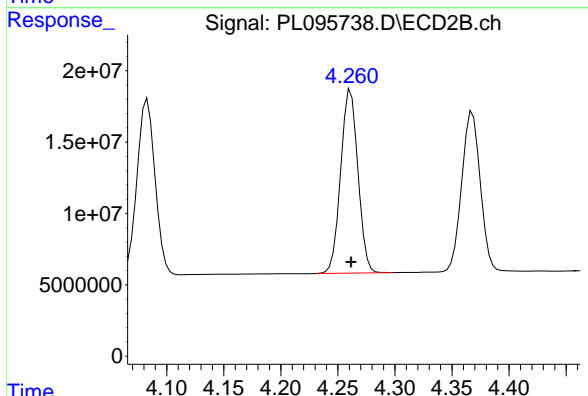
R.T.: 4.026 min
 Delta R.T.: 0.000 min
 Response: 60913646
 Conc: 24.65 ng/ml



#7 delta-BHC

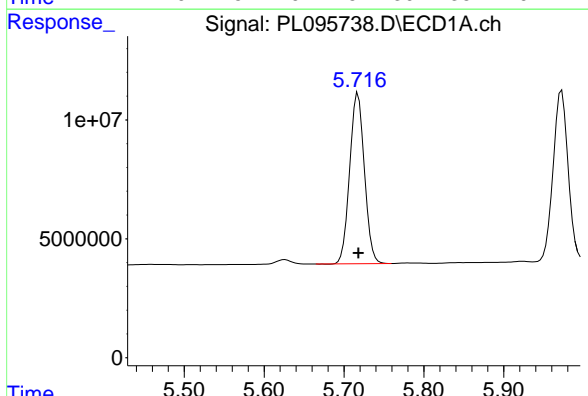
R.T.: 4.791 min
 Delta R.T.: -0.001 min
 Response: 105843753
 Conc: 24.14 ng/ml

Instrument :
 ECD_L
 ClientSampleId :
 PSTDICC025



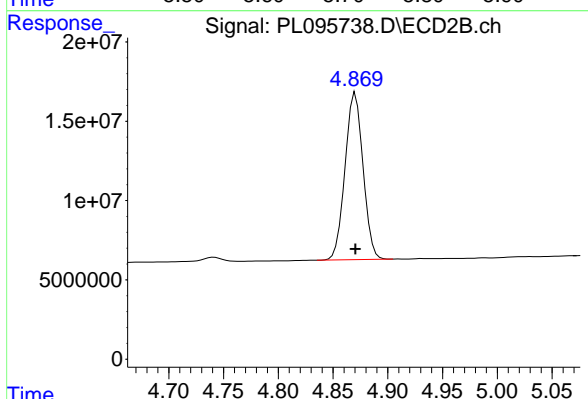
#7 delta-BHC

R.T.: 4.261 min
 Delta R.T.: 0.000 min
 Response: 135280168
 Conc: 23.73 ng/ml



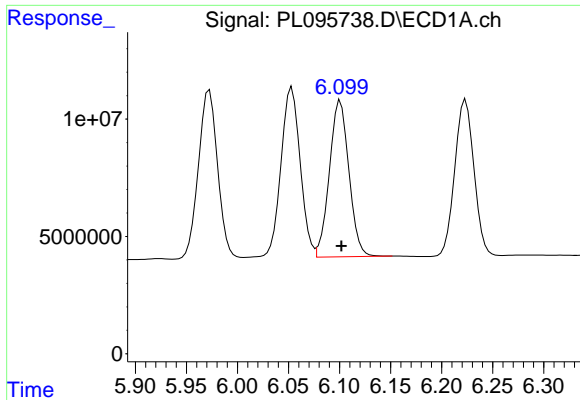
#8 Heptachlor epoxide

R.T.: 5.718 min
 Delta R.T.: 0.000 min
 Response: 92052683
 Conc: 24.67 ng/ml



#8 Heptachlor epoxide

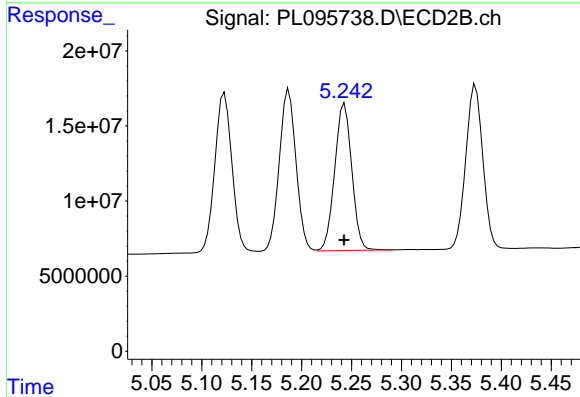
R.T.: 4.871 min
 Delta R.T.: 0.000 min
 Response: 120269114
 Conc: 24.33 ng/ml



#9 Endosulfan I

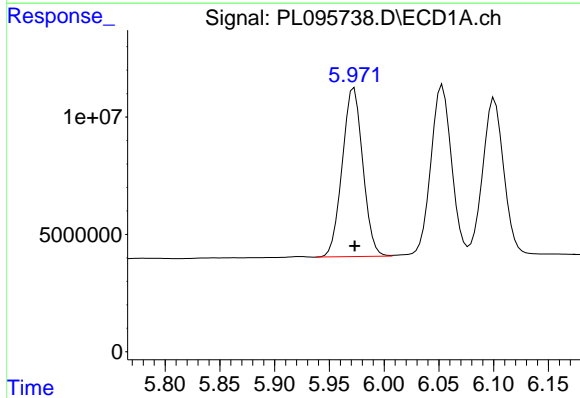
R.T.: 6.101 min
 Delta R.T.: 0.000 min
 Response: 88752148
 Conc: 24.69 ng/ml

Instrument :
 ECD_L
 ClientSampleId :
 PSTDICC025



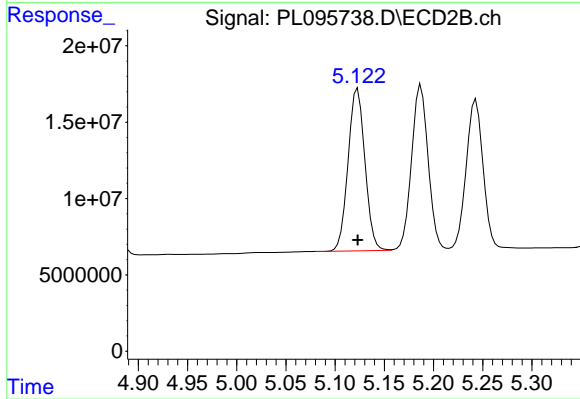
#9 Endosulfan I

R.T.: 5.243 min
 Delta R.T.: 0.000 min
 Response: 116711583
 Conc: 24.48 ng/ml



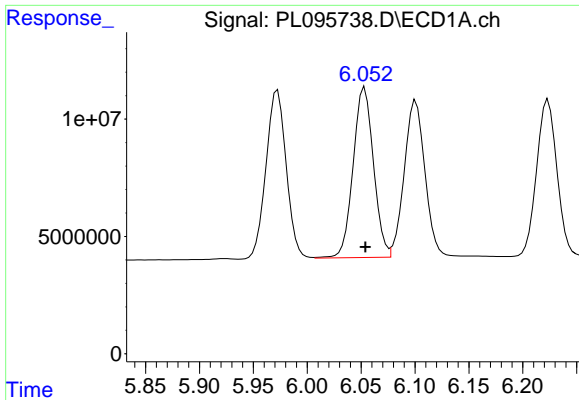
#10 gamma-Chlordane

R.T.: 5.973 min
 Delta R.T.: 0.000 min
 Response: 93872153
 Conc: 24.41 ng/ml



#10 gamma-Chlordane

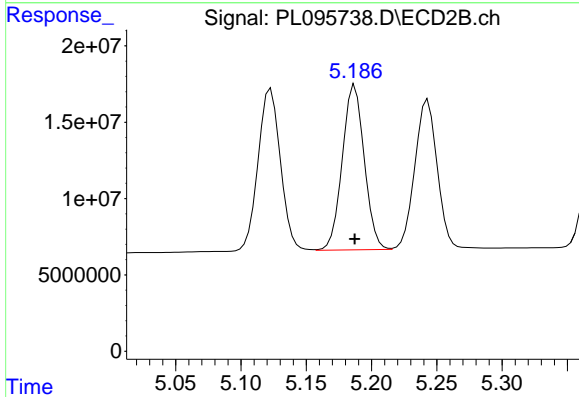
R.T.: 5.123 min
 Delta R.T.: 0.000 min
 Response: 126720112
 Conc: 24.22 ng/ml



#11 alpha-Chlordane

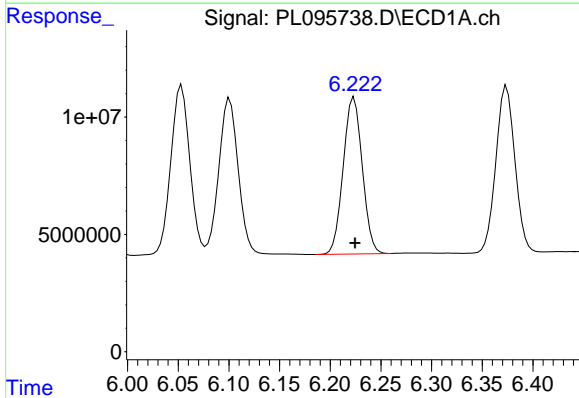
R.T.: 6.053 min
 Delta R.T.: 0.000 min
 Response: 95402335
 Conc: 24.65 ng/ml

Instrument :
 ECD_L
 ClientSampleId :
 PSTDICC025



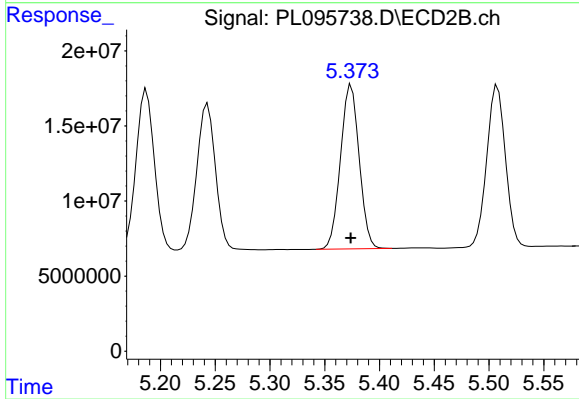
#11 alpha-Chlordane

R.T.: 5.187 min
 Delta R.T.: 0.000 min
 Response: 126478637
 Conc: 24.47 ng/ml



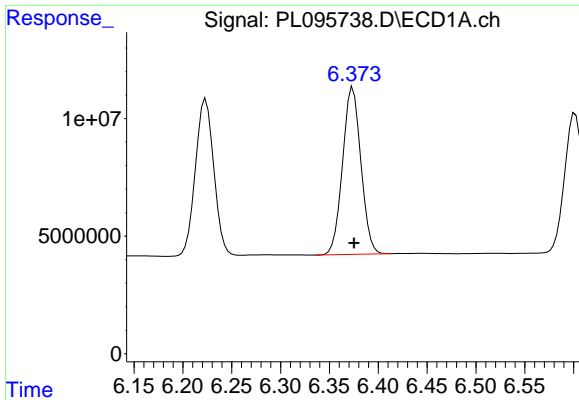
#12 4,4'-DDE

R.T.: 6.224 min
 Delta R.T.: 0.000 min
 Response: 87244934
 Conc: 24.02 ng/ml



#12 4,4'-DDE

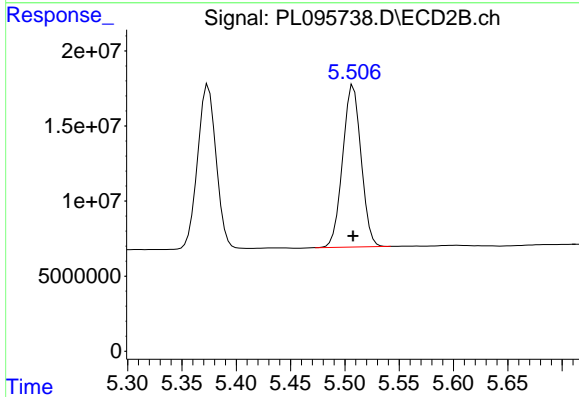
R.T.: 5.374 min
 Delta R.T.: 0.000 min
 Response: 129631725
 Conc: 24.26 ng/ml



#13 Dieldrin

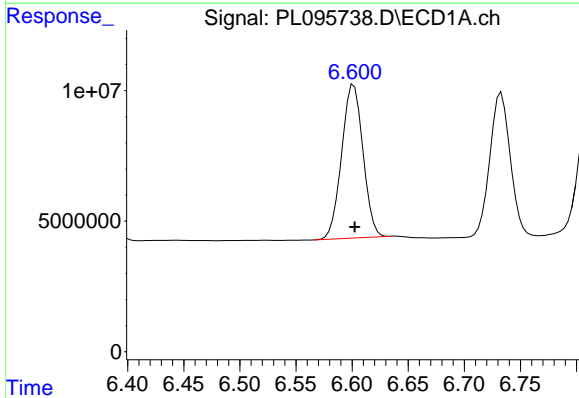
R.T.: 6.374 min
 Delta R.T.: -0.001 min
 Response: 92714141
 Conc: 24.31 ng/ml

Instrument :
 ECD_L
 ClientSampleId :
 PSTDICC025



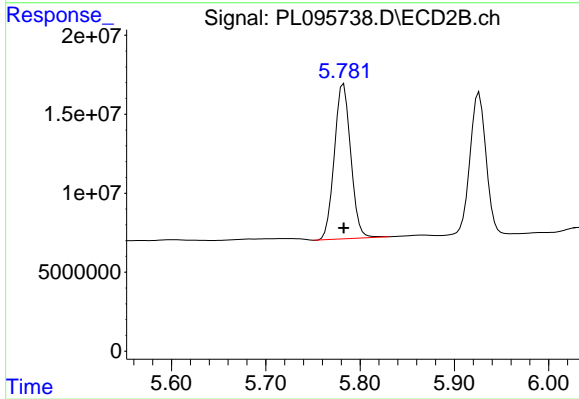
#13 Dieldrin

R.T.: 5.508 min
 Delta R.T.: 0.000 min
 Response: 127594881
 Conc: 24.09 ng/ml



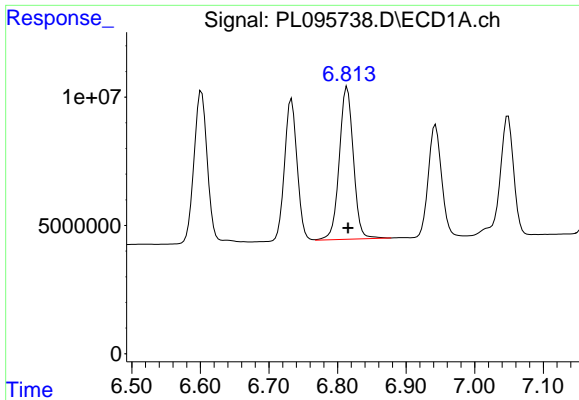
#14 Endrin

R.T.: 6.602 min
 Delta R.T.: 0.000 min
 Response: 77907657
 Conc: 24.46 ng/ml



#14 Endrin

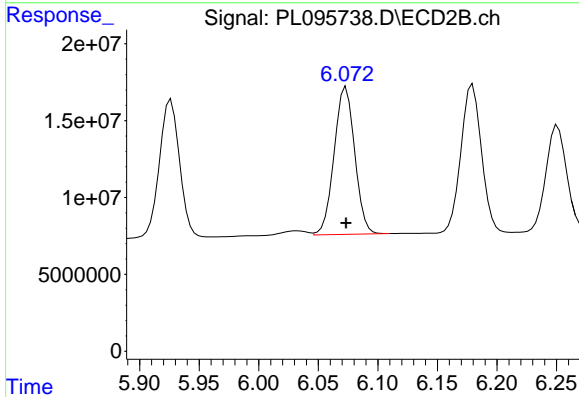
R.T.: 5.783 min
 Delta R.T.: 0.000 min
 Response: 118337806
 Conc: 24.44 ng/ml



#15 Endosulfan II

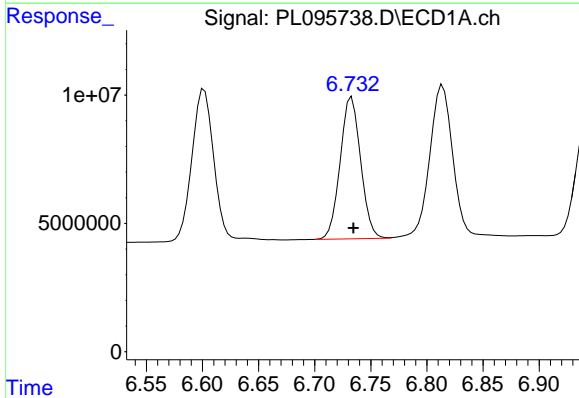
R.T.: 6.814 min
 Delta R.T.: -0.001 min
 Response: 84624751
 Conc: 25.45 ng/ml

Instrument :
 ECD_L
 ClientSampleId :
 PSTDICC025



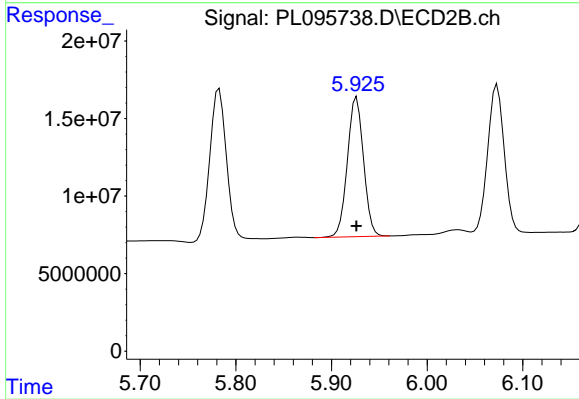
#15 Endosulfan II

R.T.: 6.073 min
 Delta R.T.: 0.000 min
 Response: 115251400
 Conc: 24.41 ng/ml



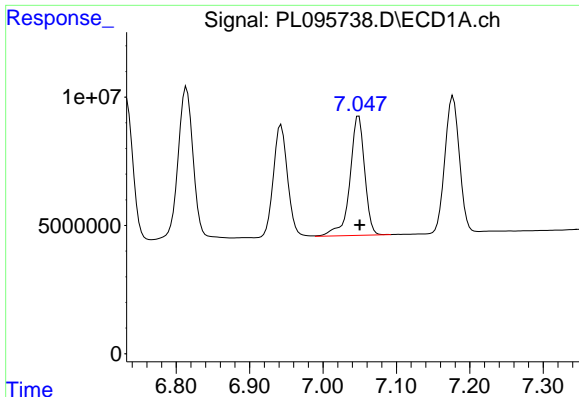
#16 4,4'-DDD

R.T.: 6.733 min
 Delta R.T.: -0.001 min
 Response: 70145317
 Conc: 24.27 ng/ml



#16 4,4'-DDD

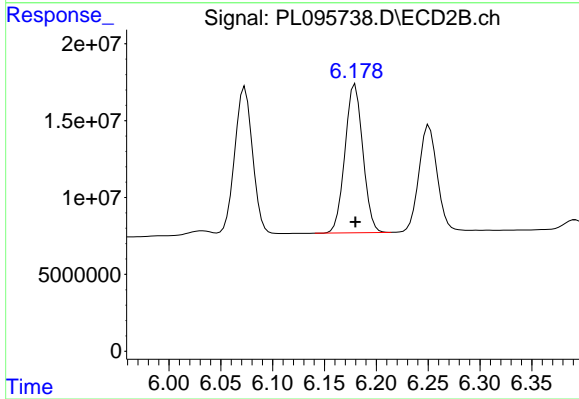
R.T.: 5.926 min
 Delta R.T.: 0.000 min
 Response: 105746062
 Conc: 24.01 ng/ml



#17 4,4'-DDT

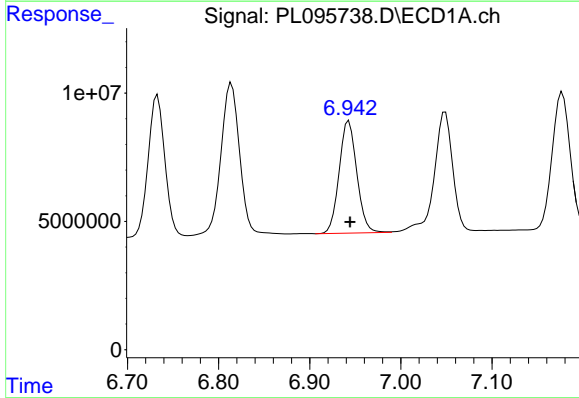
R.T.: 7.049 min
 Delta R.T.: -0.001 min
 Response: 64751863
 Conc: 24.43 ng/ml

Instrument :
 ECD_L
 ClientSampleId :
 PSTDICC025



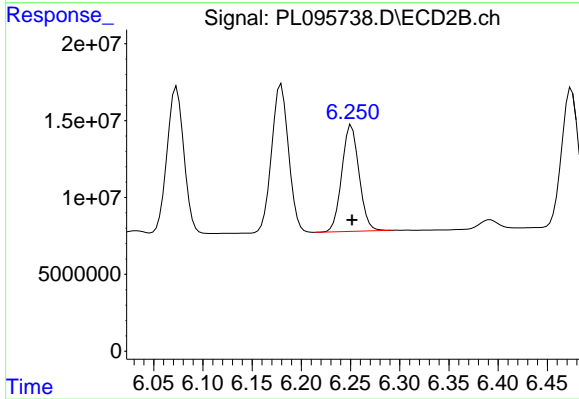
#17 4,4'-DDT

R.T.: 6.180 min
 Delta R.T.: 0.000 min
 Response: 115918284
 Conc: 24.12 ng/ml



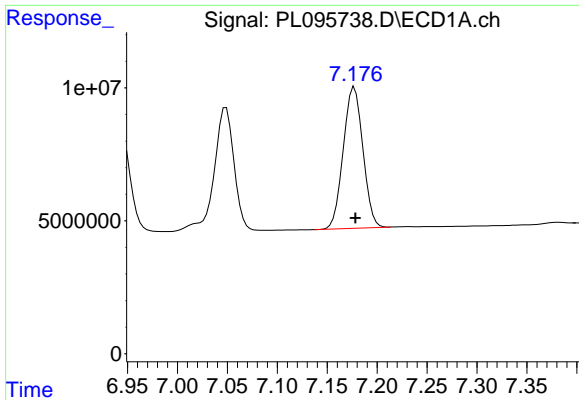
#18 Endrin aldehyde

R.T.: 6.943 min
 Delta R.T.: -0.001 min
 Response: 58843793
 Conc: 24.87 ng/ml



#18 Endrin aldehyde

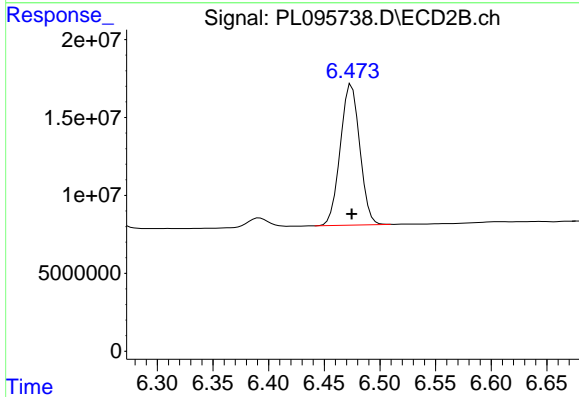
R.T.: 6.251 min
 Delta R.T.: 0.000 min
 Response: 84135949
 Conc: 24.61 ng/ml



#19 Endosulfan Sulfate

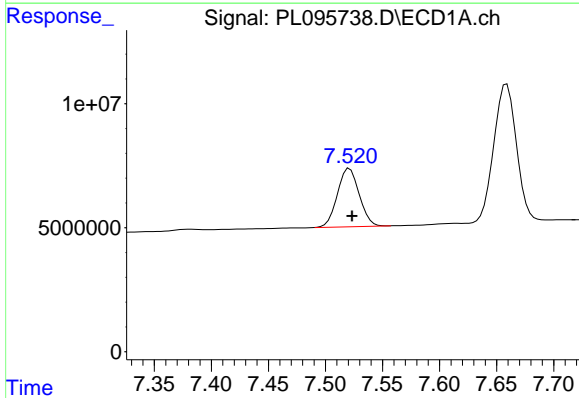
R.T.: 7.177 min
Delta R.T.: -0.001 min
Response: 72659491
Conc: 24.83 ng/ml

Instrument :
ECD_L
ClientSampleId :
PSTDICC025



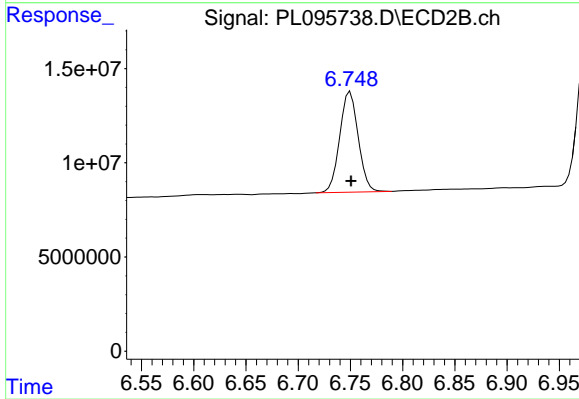
#19 Endosulfan Sulfate

R.T.: 6.475 min
Delta R.T.: 0.000 min
Response: 110256965
Conc: 24.64 ng/ml



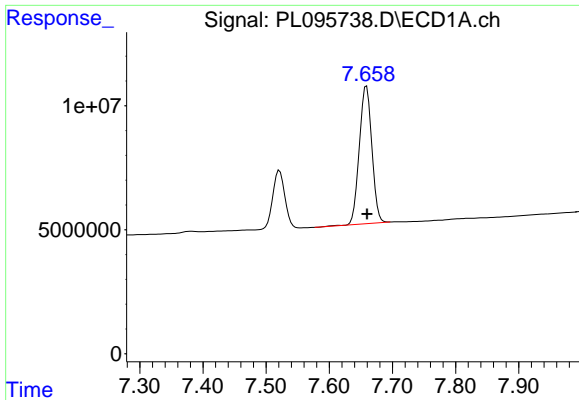
#20 Methoxychlor

R.T.: 7.521 min
Delta R.T.: -0.002 min
Response: 31284485
Conc: 24.80 ng/ml



#20 Methoxychlor

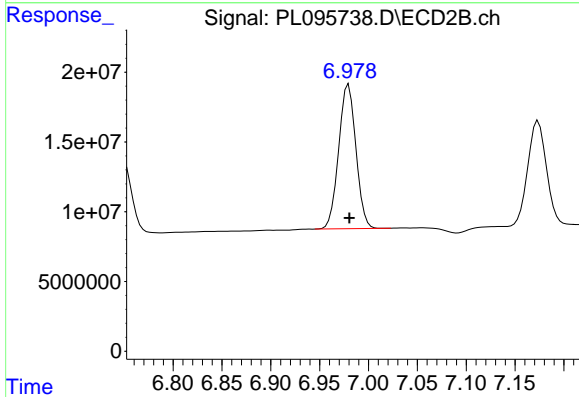
R.T.: 6.750 min
Delta R.T.: 0.000 min
Response: 65690870
Conc: 25.34 ng/ml



#21 Endrin ketone

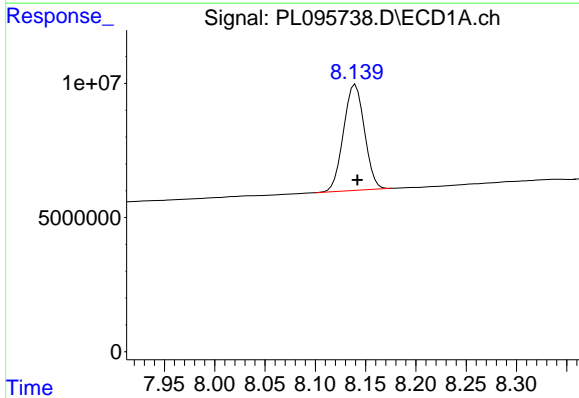
R.T.: 7.659 min
 Delta R.T.: 0.000 min
 Response: 76583035
 Conc: 24.42 ng/ml

Instrument :
 ECD_L
 ClientSampleId :
 PSTDICC025



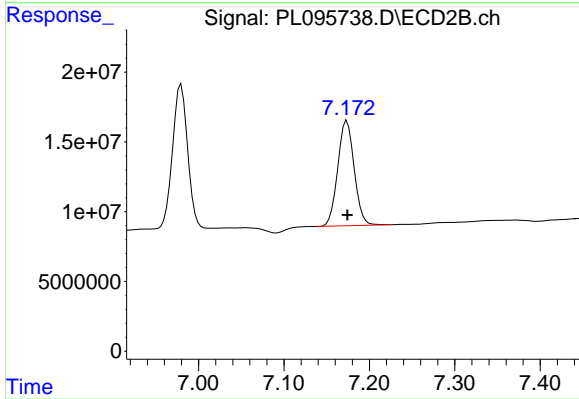
#21 Endrin ketone

R.T.: 6.980 min
 Delta R.T.: 0.000 min
 Response: 127401645
 Conc: 24.67 ng/ml



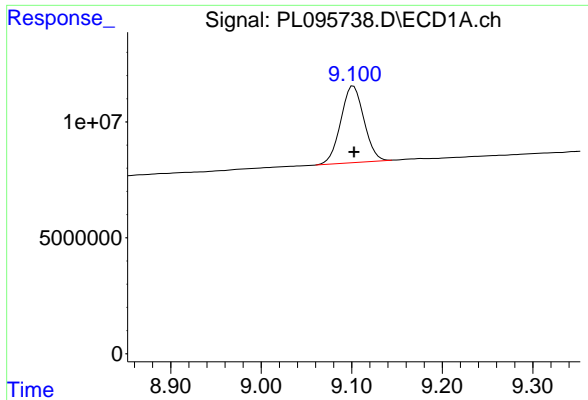
#22 Mirex

R.T.: 8.140 min
 Delta R.T.: -0.002 min
 Response: 57020908
 Conc: 25.09 ng/ml



#22 Mirex

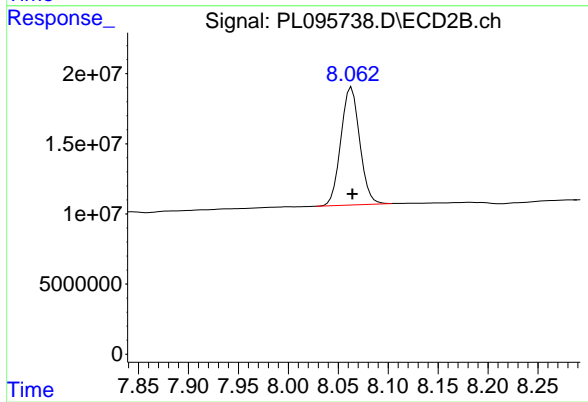
R.T.: 7.174 min
 Delta R.T.: 0.000 min
 Response: 100821592
 Conc: 25.27 ng/ml



#28 Decachlorobiphenyl

R.T.: 9.102 min
Delta R.T.: 0.000 min
Response: 58871383
Conc: 25.55 ng/ml

Instrument :
ECD_L
ClientSampleId :
PSTDICC025



#28 Decachlorobiphenyl

R.T.: 8.063 min
Delta R.T.: 0.000 min
Response: 110181832
Conc: 24.90 ng/ml