

Data Path : Z:\pestpcbsrv\HPCHEM1\ECD\_L\Data\PL052223\  
 Data File : PL082864.D  
 Signal(s) : Signal #1: ECD1A.ch Signal #2: ECD2B.ch  
 Acq On : 22 May 2023 10:54  
 Operator : AR\AJ  
 Sample : I.BLK  
 Misc :  
 ALS Vial : 2 Sample Multiplier: 1

Instrument :  
 ECD\_L  
 ClientSampleId :

Integration File signal 1: autoint1.e  
 Integration File signal 2: autoint2.e  
 Quant Time: May 22 12:21:26 2023  
 Quant Method : Z:\pestpcbsrv\HPCHEM1\ECD\_L\methods\PL051923.M  
 Quant Title : GC Extractables  
 QLast Update : Sat May 20 04:58:53 2023  
 Response via : Initial Calibration  
 Integrator: ChemStation

Volume Inj. : 1 µl  
 Signal #1 Phase : ZB-MR2 Signal #2 Phase: ZB-MR1  
 Signal #1 Info : 30M x 0.32mm x0.2 Signal #2 Info : 30M x 0.32mm x0.5µm

	Compound	RT#1	RT#2	Resp#1	Resp#2	ng/ml	ng/ml
-----							
System Monitoring Compounds							
1)	SA Tetrachlo...	3.326	2.639	54222959	45630917	18.449	17.577
28)	SA Decachlor...	8.745	7.749	41663829	47524966	19.865	19.113
Target Compounds							
2)	A alpha-BHC	0.000	3.120	0	88736	N.D.	0.024 #
3)	MA gamma-BHC...	0.000	3.479f	0	582861	N.D.	0.175 #
4)	MA Heptachlor	4.685	3.810f	141623	43987	0.037	0.012 #
5)	MB Aldrin	0.000	4.095f	0	181464	N.D.	0.056 #
6)	B beta-BHC	0.000	3.765	0	385787	N.D.	0.270 #
7)	B delta-BHC	4.529f	3.987	3486224	118320	1.014	0.036 #
8)	B Heptachlo...	5.447	4.569	161585	56914	0.051	0.019 #
10)	B gamma-Chl...	5.709	4.822	361925	504251	0.114	0.168 #
11)	B alpha-Chl...	5.764	4.880	220532	189784	0.069	0.063
12)	B 4,4'-DDE	0.000	5.076	0	145758	N.D.	0.060 #
17)	MA 4,4'-DDT	0.000	5.870	0	78245	N.D.	0.035 #
18)	B Endrin al...	0.000	5.981f	0	198985	N.D.	0.101 #
19)	B Endosulfa...	0.000	6.169	0	1156171	N.D.	0.472 #
20)	A Methoxychlor	0.000	6.458	0	22041	N.D.	0.017 #
22)	Mirex	0.000	6.844	0	14912	N.D.	0.006 #
23)	Chlordane-1	0.000	3.618	0	22428	N.D.	0.272 #
25)	Chlordane-3	5.679	4.822	654794	504251	1.578	1.892
26)	Chlordane-4	5.764	4.880	220532	189784	0.436	0.674 #

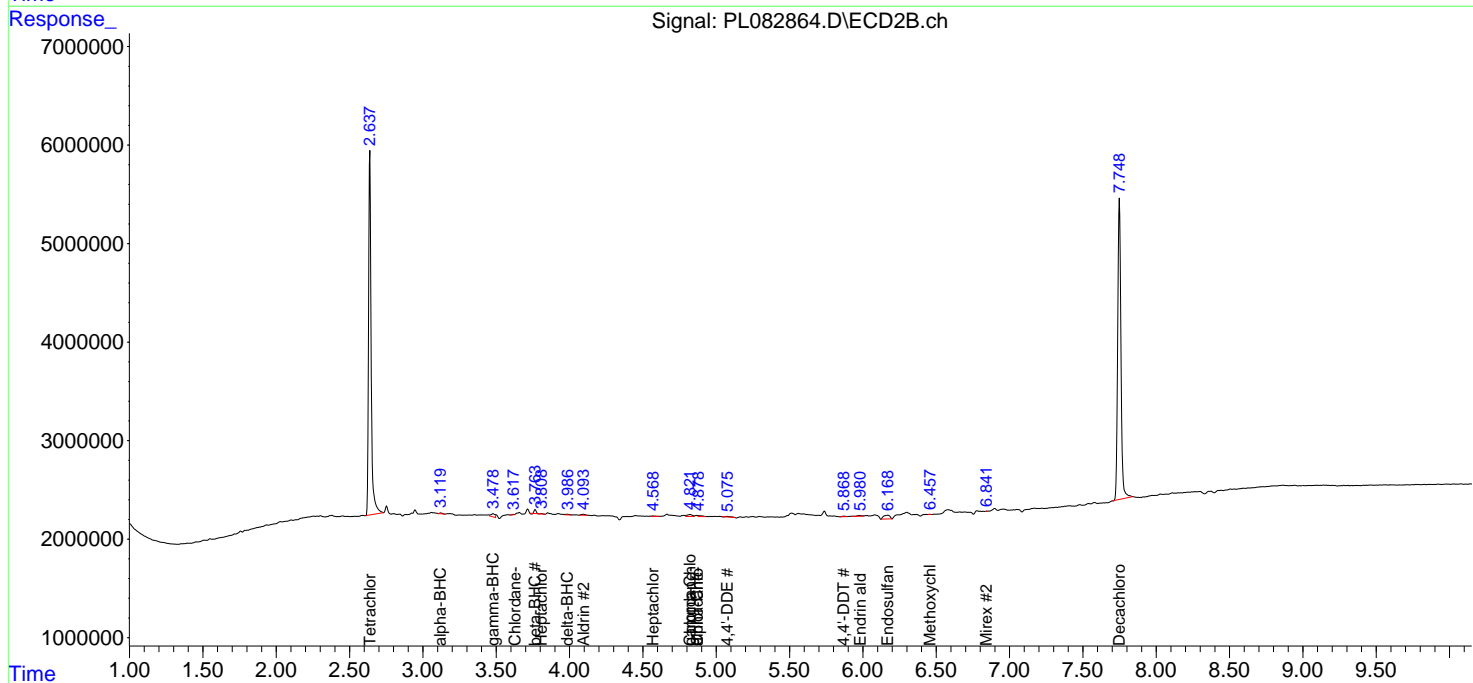
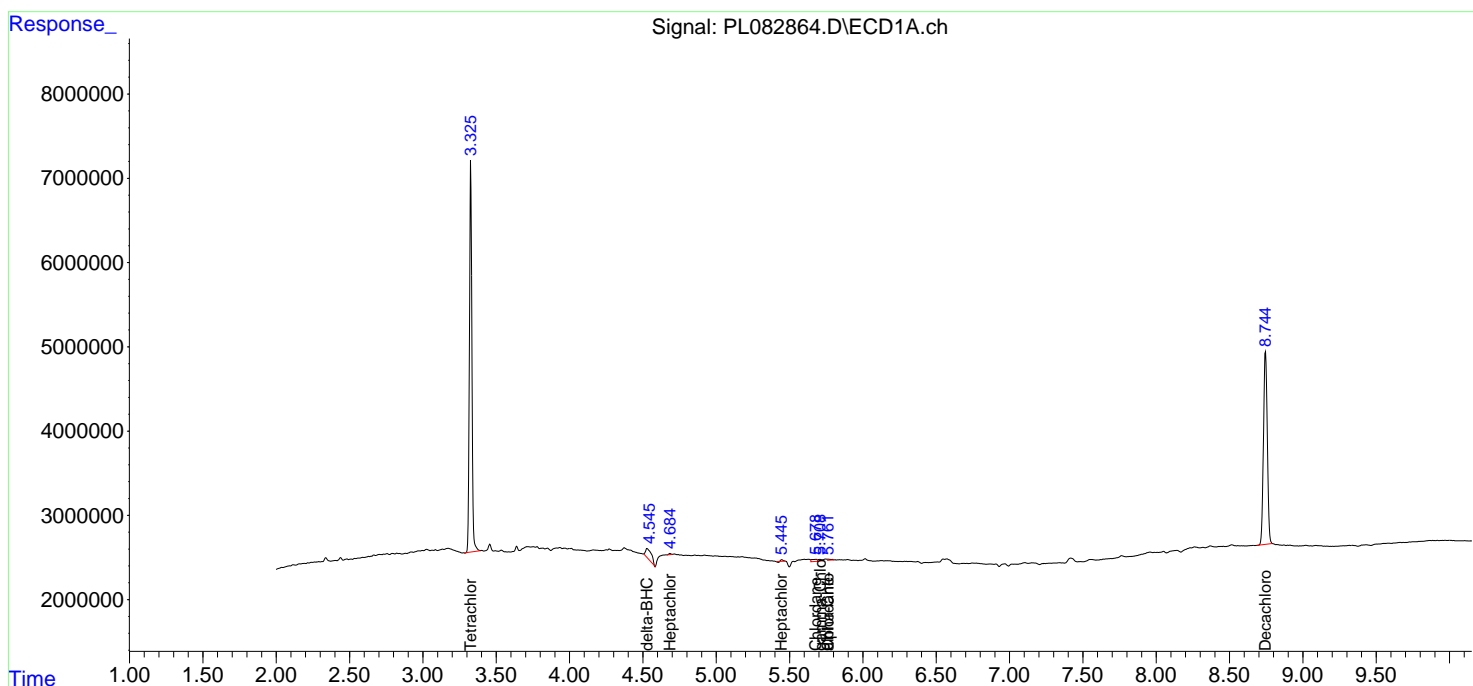
(f)=RT Delta > 1/2 Window (#)=Amounts differ by > 25% (m)=manual int.

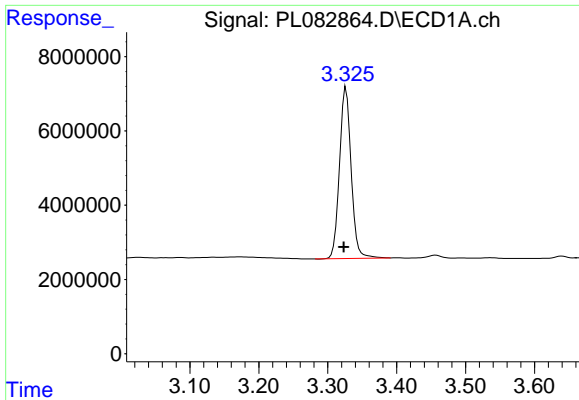
Data Path : Z:\pestpcbsrv\HPCHEM1\ECD\_L\Data\PL052223\  
 Data File : PL082864.D  
 Signal(s) : Signal #1: ECD1A.ch Signal #2: ECD2B.ch  
 Acq On : 22 May 2023 10:54  
 Operator : AR\AJ  
 Sample : I.BLK  
 Misc :  
 ALS Vial : 2 Sample Multiplier: 1

Instrument :  
 ECD\_L  
 ClientSampleId :

Integration File signal 1: autoint1.e  
 Integration File signal 2: autoint2.e  
 Quant Time: May 22 12:21:26 2023  
 Quant Method : Z:\pestpcbsrv\HPCHEM1\ECD\_L\methods\PL051923.M  
 Quant Title : GC Extractables  
 QLast Update : Sat May 20 04:58:53 2023  
 Response via : Initial Calibration  
 Integrator: ChemStation

Volume Inj. : 1 µl  
 Signal #1 Phase : ZB-MR2 Signal #2 Phase: ZB-MR1  
 Signal #1 Info : 30M x 0.32mm x0.2 Signal #2 Info : 30M x 0.32mm x0.5µm

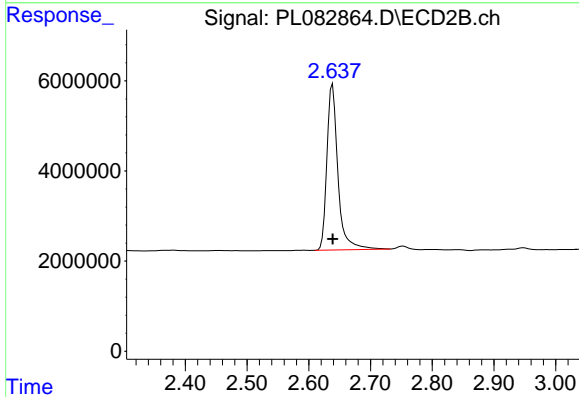




#1 Tetrachloro-m-xylene

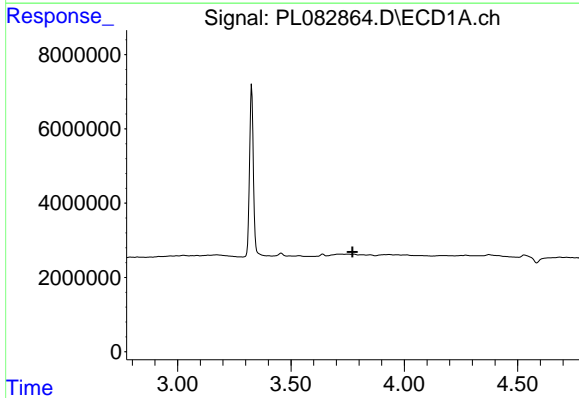
R.T.: 3.326 min  
 Delta R.T.: 0.003 min  
 Response: 54222959  
 Conc: 18.45 ng/ml

Instrument :  
 ECD\_L  
 ClientSampleId :



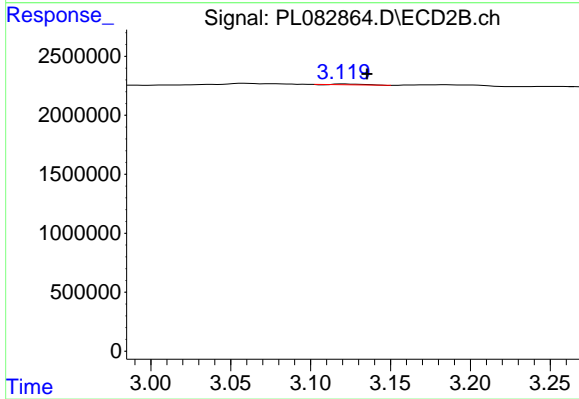
#1 Tetrachloro-m-xylene

R.T.: 2.639 min  
 Delta R.T.: 0.000 min  
 Response: 45630917  
 Conc: 17.58 ng/ml



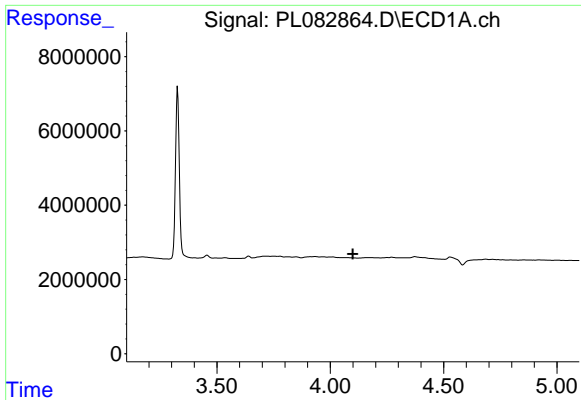
#2 alpha-BHC

R.T.: 0.000 min  
 Exp R.T. : 3.772 min  
 Response: 0  
 Conc: N.D.



#2 alpha-BHC

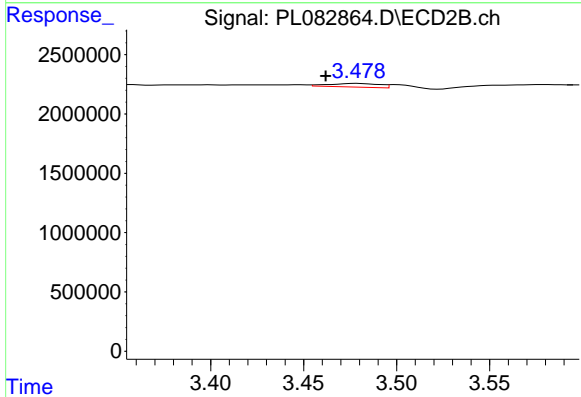
R.T.: 3.120 min  
 Delta R.T.: -0.015 min  
 Response: 88736  
 Conc: 0.02 ng/ml



#3 gamma-BHC (Lindane)

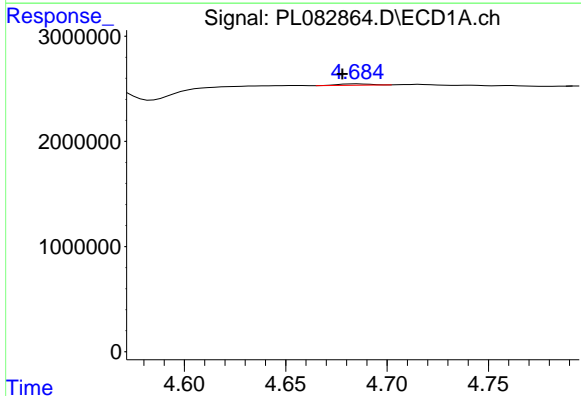
R.T.: 0.000 min  
 Exp R.T.: 4.099 min  
 Response: 0  
 Conc: N.D.

Instrument :  
 ECD\_L  
 ClientSampleId :



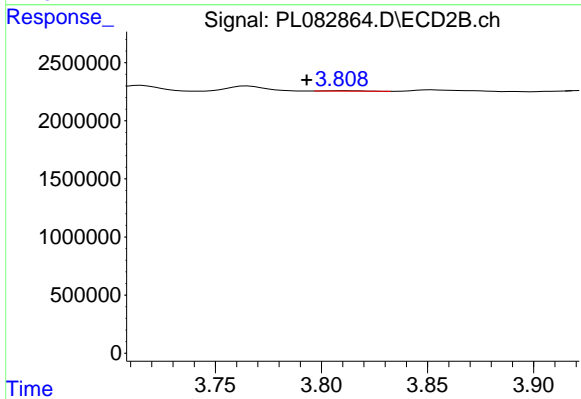
#3 gamma-BHC (Lindane)

R.T.: 3.479 min  
 Delta R.T.: 0.017 min  
 Response: 582861  
 Conc: 0.17 ng/ml



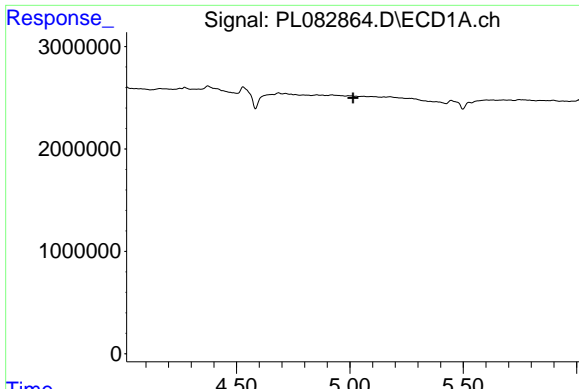
#4 Heptachlor

R.T.: 4.685 min  
 Delta R.T.: 0.007 min  
 Response: 141623  
 Conc: 0.04 ng/ml



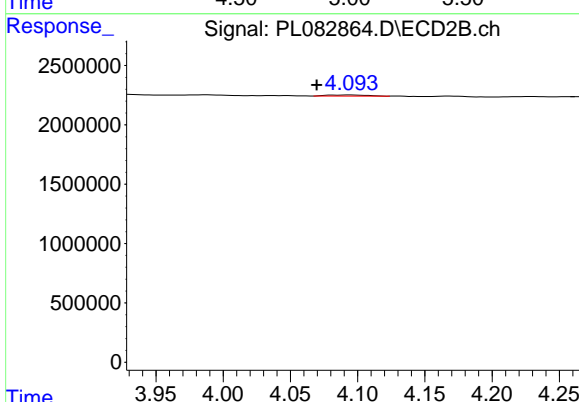
#4 Heptachlor

R.T.: 3.810 min  
 Delta R.T.: 0.016 min  
 Response: 43987  
 Conc: 0.01 ng/ml

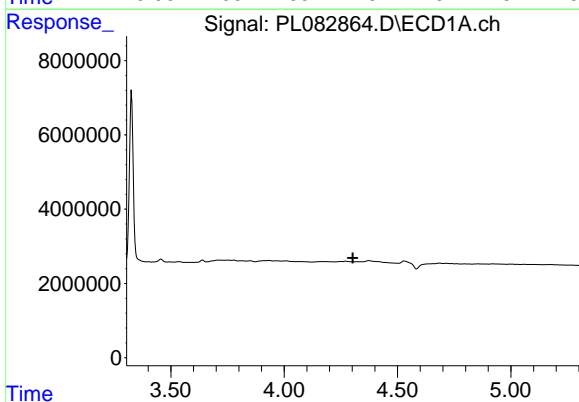


#5 Aldrin  
 R.T.: 0.000 min  
 Exp R.T.: 5.014 min  
 Response: 0  
 Conc: N.D.

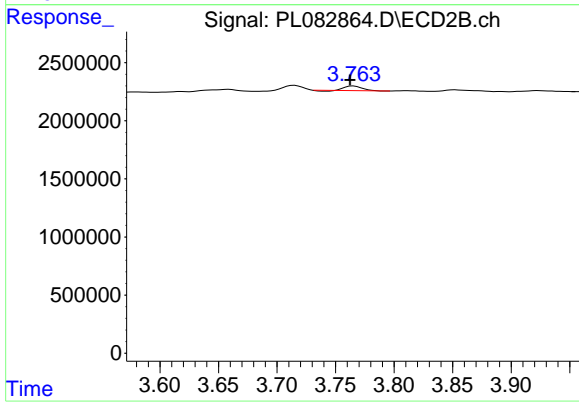
Instrument :  
 ECD\_L  
 ClientSampleId :



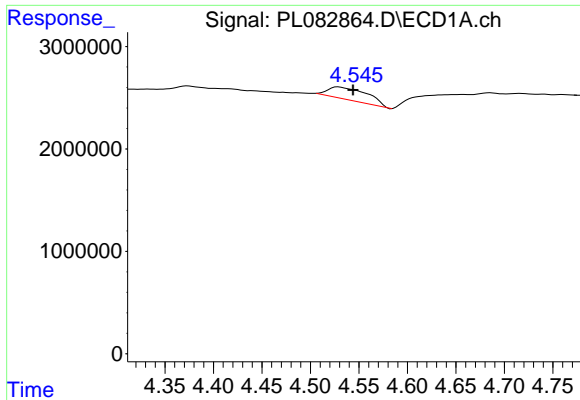
#5 Aldrin  
 R.T.: 4.095 min  
 Delta R.T.: 0.025 min  
 Response: 181464  
 Conc: 0.06 ng/ml



#6 beta-BHC  
 R.T.: 0.000 min  
 Exp R.T.: 4.303 min  
 Response: 0  
 Conc: N.D.



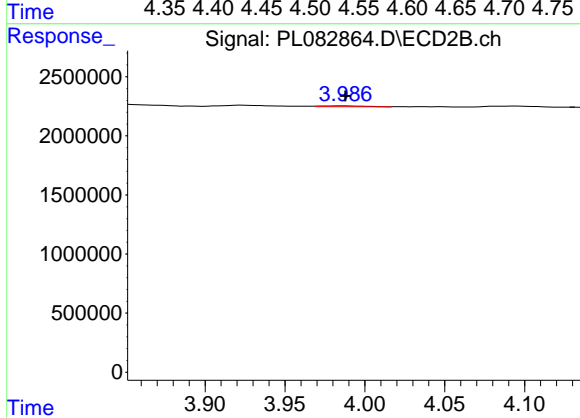
#6 beta-BHC  
 R.T.: 3.765 min  
 Delta R.T.: 0.003 min  
 Response: 385787  
 Conc: 0.27 ng/ml



#7 delta-BHC

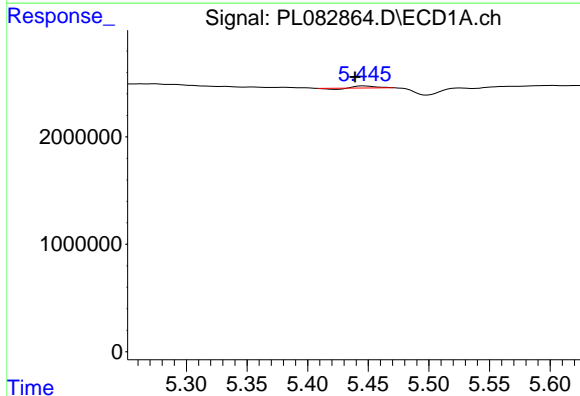
R.T.: 4.529 min  
 Delta R.T.: -0.015 min  
 Response: 3486224  
 Conc: 1.01 ng/ml

Instrument :  
 ECD\_L  
 ClientSampleId :



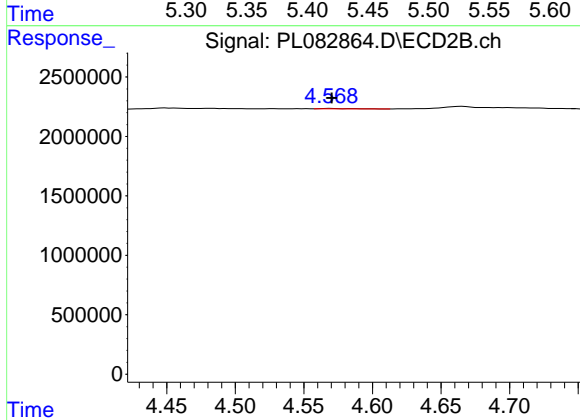
#7 delta-BHC

R.T.: 3.987 min  
 Delta R.T.: 0.000 min  
 Response: 118320  
 Conc: 0.04 ng/ml



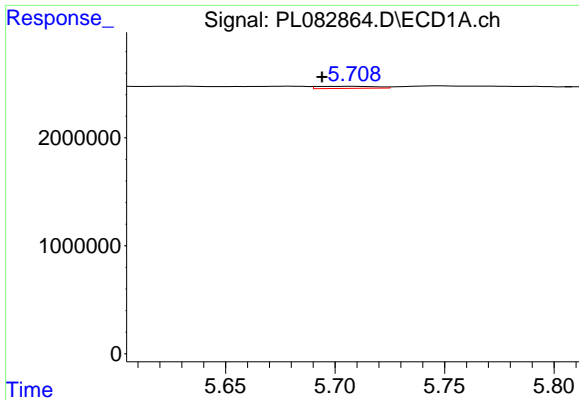
#8 Heptachlor epoxide

R.T.: 5.447 min  
 Delta R.T.: 0.008 min  
 Response: 161585  
 Conc: 0.05 ng/ml



#8 Heptachlor epoxide

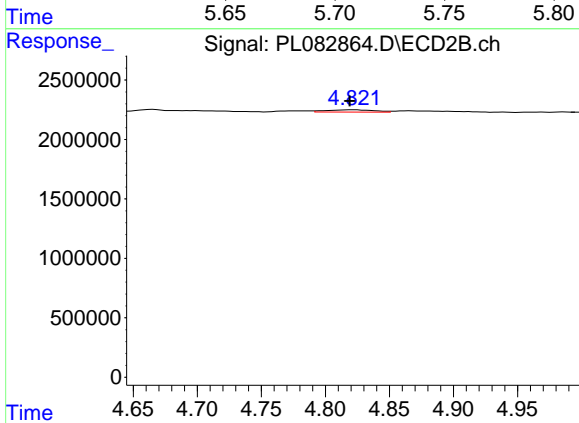
R.T.: 4.569 min  
 Delta R.T.: -0.001 min  
 Response: 56914  
 Conc: 0.02 ng/ml



#10 gamma-Chlordane

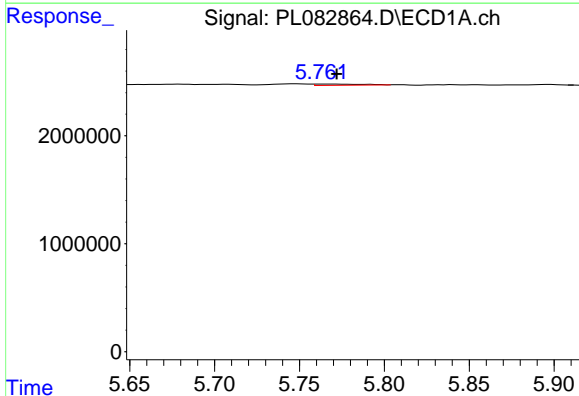
R.T.: 5.709 min  
 Delta R.T.: 0.015 min  
 Response: 361925  
 Conc: 0.11 ng/ml

Instrument :  
 ECD\_L  
 ClientSampleId :



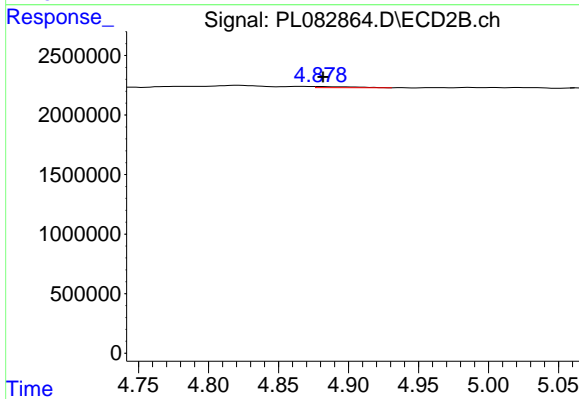
#10 gamma-Chlordane

R.T.: 4.822 min  
 Delta R.T.: 0.003 min  
 Response: 504251  
 Conc: 0.17 ng/ml



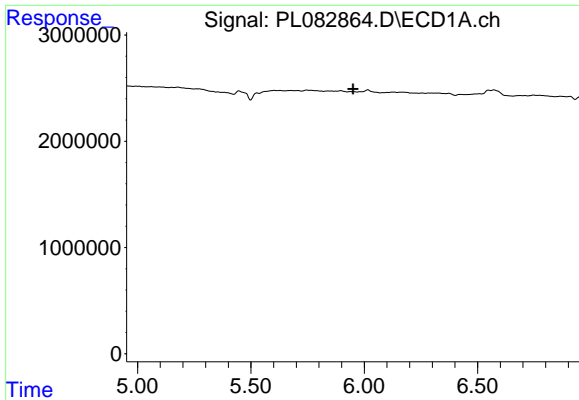
#11 alpha-Chlordane

R.T.: 5.764 min  
 Delta R.T.: -0.008 min  
 Response: 220532  
 Conc: 0.07 ng/ml



#11 alpha-Chlordane

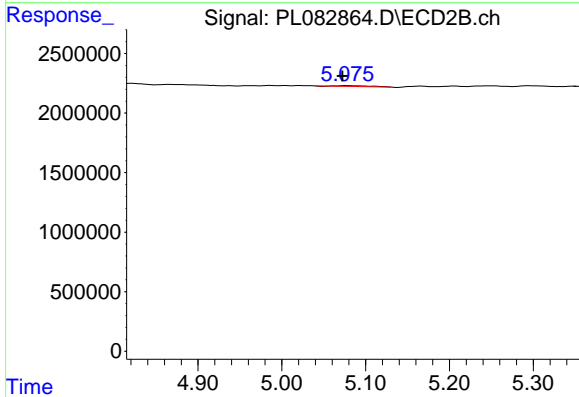
R.T.: 4.880 min  
 Delta R.T.: -0.002 min  
 Response: 189784  
 Conc: 0.06 ng/ml



#12 4,4'-DDE

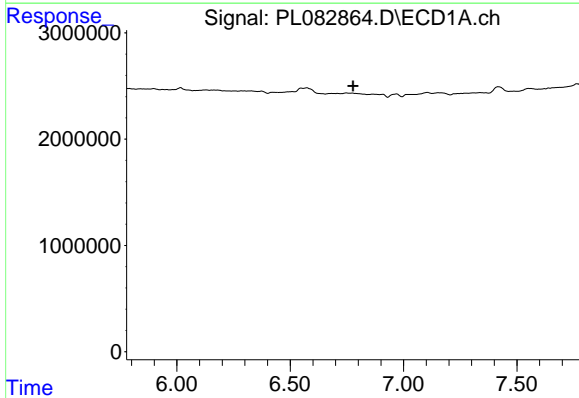
R.T.: 0.000 min  
 Exp R.T.: 5.951 min  
 Response: 0  
 Conc: N.D.

Instrument :  
 ECD\_L  
 ClientSampleId :



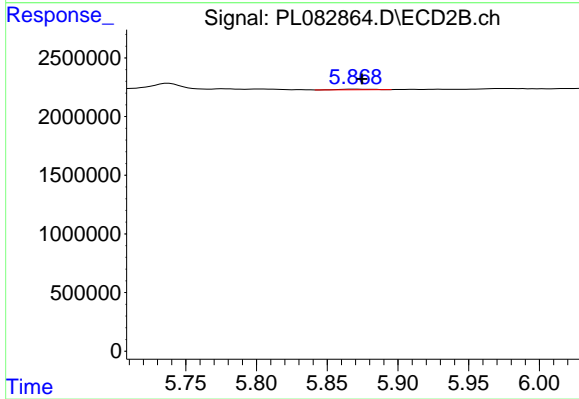
#12 4,4'-DDE

R.T.: 5.076 min  
 Delta R.T.: 0.004 min  
 Response: 145758  
 Conc: 0.06 ng/ml



#17 4,4'-DDT

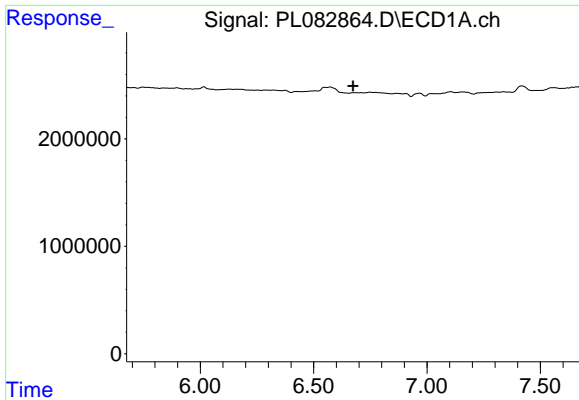
R.T.: 0.000 min  
 Exp R.T.: 6.778 min  
 Response: 0  
 Conc: N.D.



#17 4,4'-DDT

R.T.: 5.870 min  
 Delta R.T.: -0.005 min  
 Response: 78245  
 Conc: 0.04 ng/ml

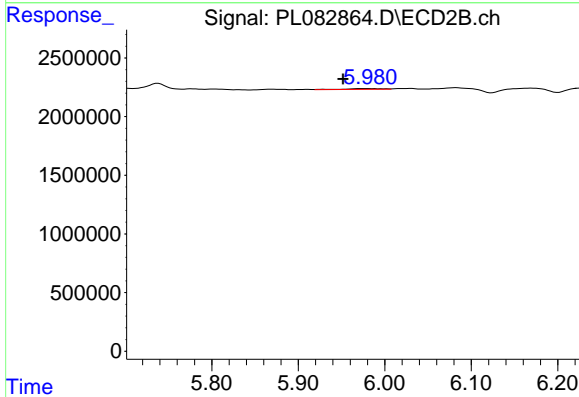




#18 Endrin aldehyde

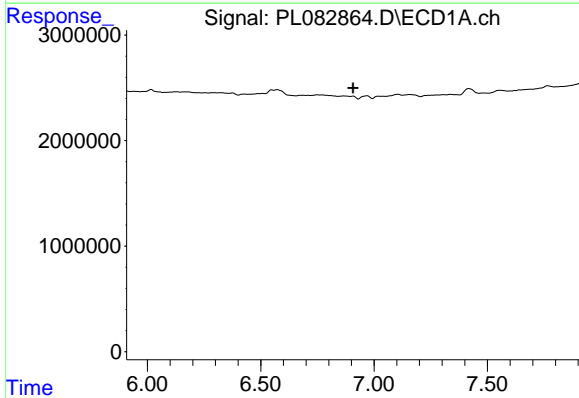
R.T.: 0.000 min  
 Exp R.T. : 6.674 min  
 Response: 0  
 Conc: N.D.

Instrument :  
 ECD\_L  
 ClientSampleId :



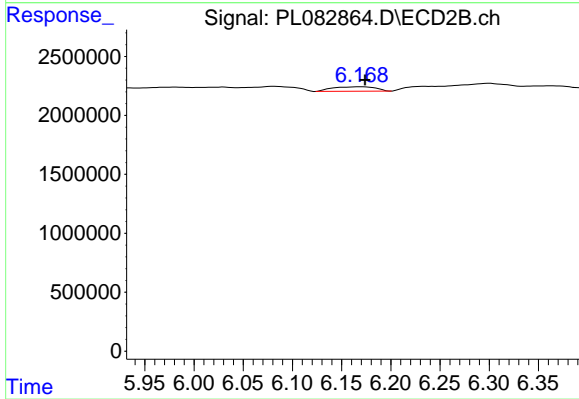
#18 Endrin aldehyde

R.T.: 5.981 min  
 Delta R.T.: 0.029 min  
 Response: 198985  
 Conc: 0.10 ng/ml



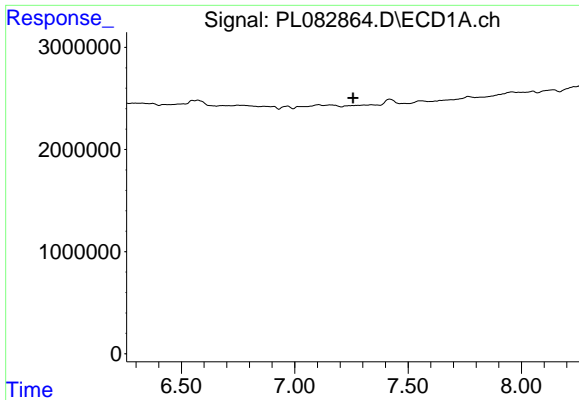
#19 Endosulfan Sulfate

R.T.: 0.000 min  
 Exp R.T. : 6.908 min  
 Response: 0  
 Conc: N.D.



#19 Endosulfan Sulfate

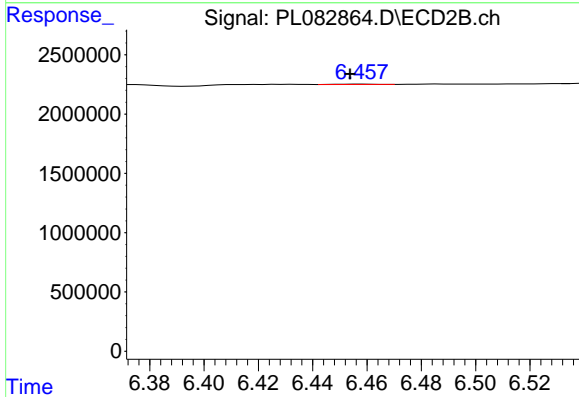
R.T.: 6.169 min  
 Delta R.T.: -0.005 min  
 Response: 1156171  
 Conc: 0.47 ng/ml



#20 Methoxychlor

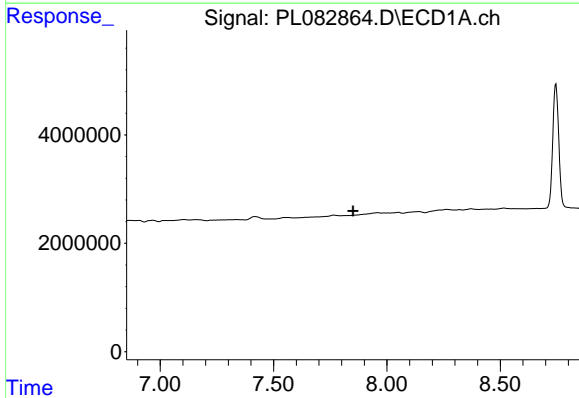
R.T.: 0.000 min  
 Exp R.T.: 7.258 min  
 Response: 0  
 Conc: N.D.

Instrument :  
 ECD\_L  
 ClientSampleId :



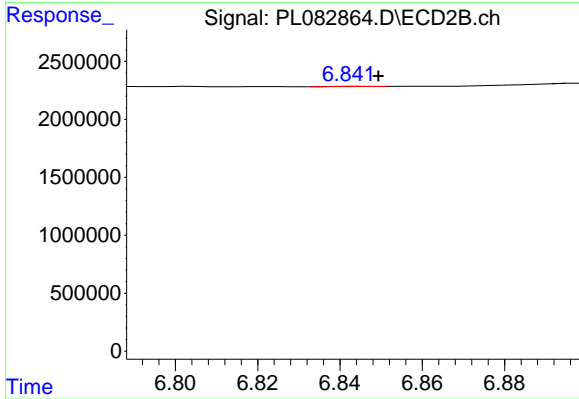
#20 Methoxychlor

R.T.: 6.458 min  
 Delta R.T.: 0.004 min  
 Response: 22041  
 Conc: 0.02 ng/ml



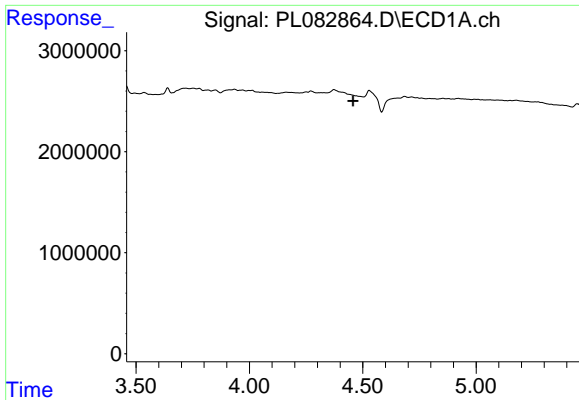
#22 Mirex

R.T.: 0.000 min  
 Exp R.T.: 7.851 min  
 Response: 0  
 Conc: N.D.



#22 Mirex

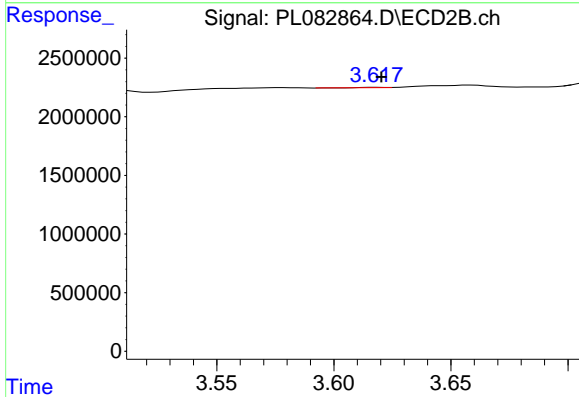
R.T.: 6.844 min  
 Delta R.T.: -0.006 min  
 Response: 14912  
 Conc: 0.01 ng/ml



#23 Chlordane-1

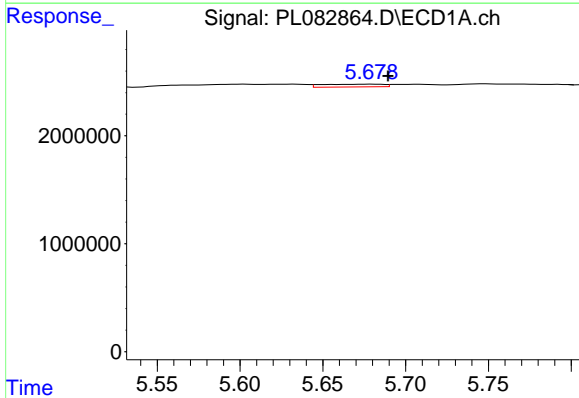
R.T.: 0.000 min  
 Exp R.T.: 4.458 min  
 Response: 0  
 Conc: N.D.

Instrument :  
 ECD\_L  
 ClientSampleId :



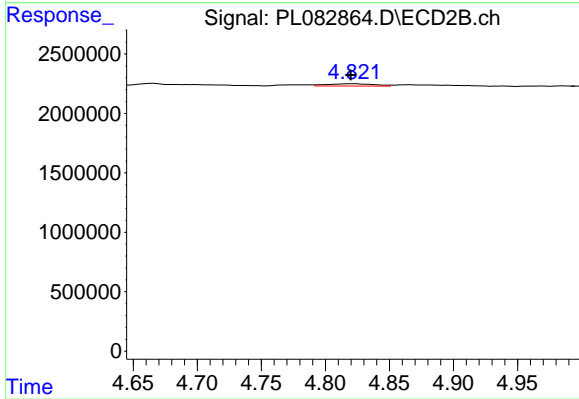
#23 Chlordane-1

R.T.: 3.618 min  
 Delta R.T.: -0.002 min  
 Response: 22428  
 Conc: 0.27 ng/ml



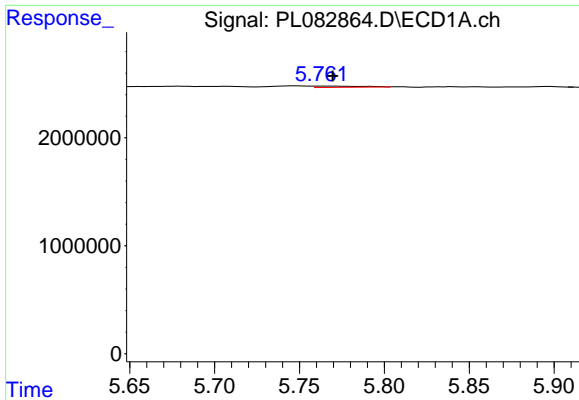
#25 Chlordane-3

R.T.: 5.679 min  
 Delta R.T.: -0.010 min  
 Response: 654794  
 Conc: 1.58 ng/ml



#25 Chlordane-3

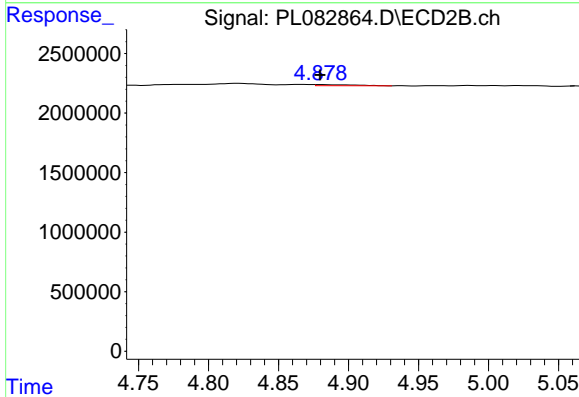
R.T.: 4.822 min  
 Delta R.T.: 0.002 min  
 Response: 504251  
 Conc: 1.89 ng/ml



#26 Chlordane-4

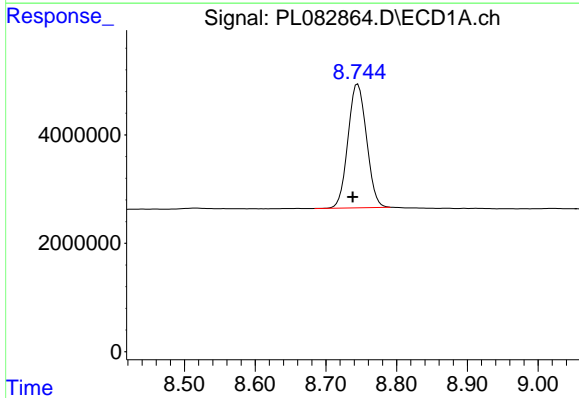
R.T.: 5.764 min  
 Delta R.T.: -0.005 min  
 Response: 220532  
 Conc: 0.44 ng/ml

Instrument :  
 ECD\_L  
 ClientSampleId :



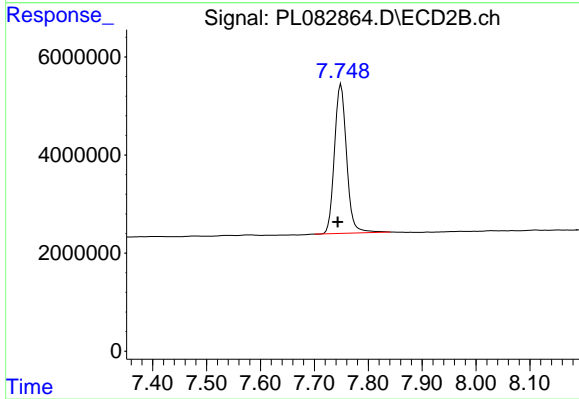
#26 Chlordane-4

R.T.: 4.880 min  
 Delta R.T.: 0.000 min  
 Response: 189784  
 Conc: 0.67 ng/ml



#28 Decachlorobiphenyl

R.T.: 8.745 min  
 Delta R.T.: 0.007 min  
 Response: 41663829  
 Conc: 19.87 ng/ml



#28 Decachlorobiphenyl

R.T.: 7.749 min  
 Delta R.T.: 0.006 min  
 Response: 47524966  
 Conc: 19.11 ng/ml