

Data Path : Z:\pestpcbsrv\HPCHEM1\ECD_L\Data\PL052319\
 Data File : PL048884.D
 Signal(s) : Signal #1: ECD1A.ch Signal #2: ECD2B.ch
 Acq On : 23 May 2019 16:59
 Operator : SM\AJ
 Sample : PEM
 Misc :
 ALS Vial : 3 Sample Multiplier: 1

Instrument :
 ECD_L
 ClientSampleId :
 PEM

Integration File signal 1: autoint1.e
 Integration File signal 2: autoint2.e
 Quant Time: May 24 01:04:14 2019
 Quant Method : Z:\pestpcbsrv\HPCHEM1\ECD_L\methods\PL050119.M
 Quant Title : GC Extractables
 QLast Update : Thu May 02 09:36:55 2019
 Response via : Initial Calibration
 Integrator: ChemStation

Volume Inj. : 1 µl
 Signal #1 Phase : ZB-MR2 Signal #2 Phase: ZB-MR1
 Signal #1 Info : 30M x 0.32mm x0.2 Signal #2 Info : 30M x 0.32mm x0.5µm

	Compound	RT#1	RT#2	Resp#1	Resp#2	ng/ml	ng/ml

System Monitoring Compounds							
1)	SA Tetrachlo...	3.326	3.938	218.3E6	57405473	22.532	23.046
28)	SA Decachlor...	7.994	8.973	196.1E6	60934396	19.502	22.957
Target Compounds							
2)	A alpha-BHC	3.754	4.326	160.1E6	35765639	10.348	10.184
3)	MA gamma-BHC...	4.030	4.609	156.9E6	34550762	11.039	10.578
6)	B beta-BHC	4.283	4.784	66684355	16830808	11.299	10.817
14)	MA Endrin	5.812	6.631	573.7E6	123.8E6	47.127	47.475
16)	A 4,4'-DDD	5.947	6.757	23419478	6219958	2.406	2.772
17)	MA 4,4'-DDT	6.181	7.055	1016.5E6	241.3E6	101.179	102.844
18)	B Endrin al...	6.253	0.000	11466040	0	1.180	N.D. #
20)	A Methoxychlor	6.727	7.515	1224.4E6	322.2E6	224.880	236.005
21)	B Endrin ke...	6.946	7.656	31285370	6791473	2.684	2.599

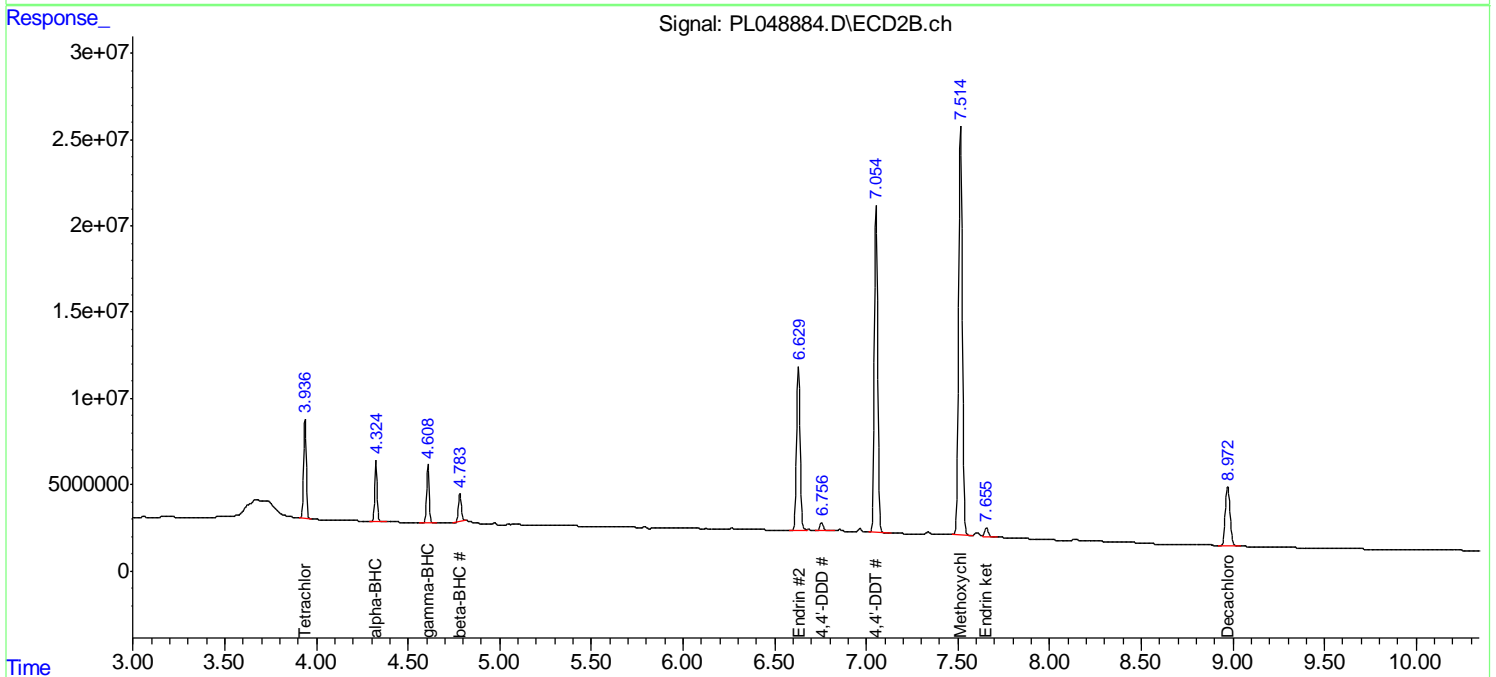
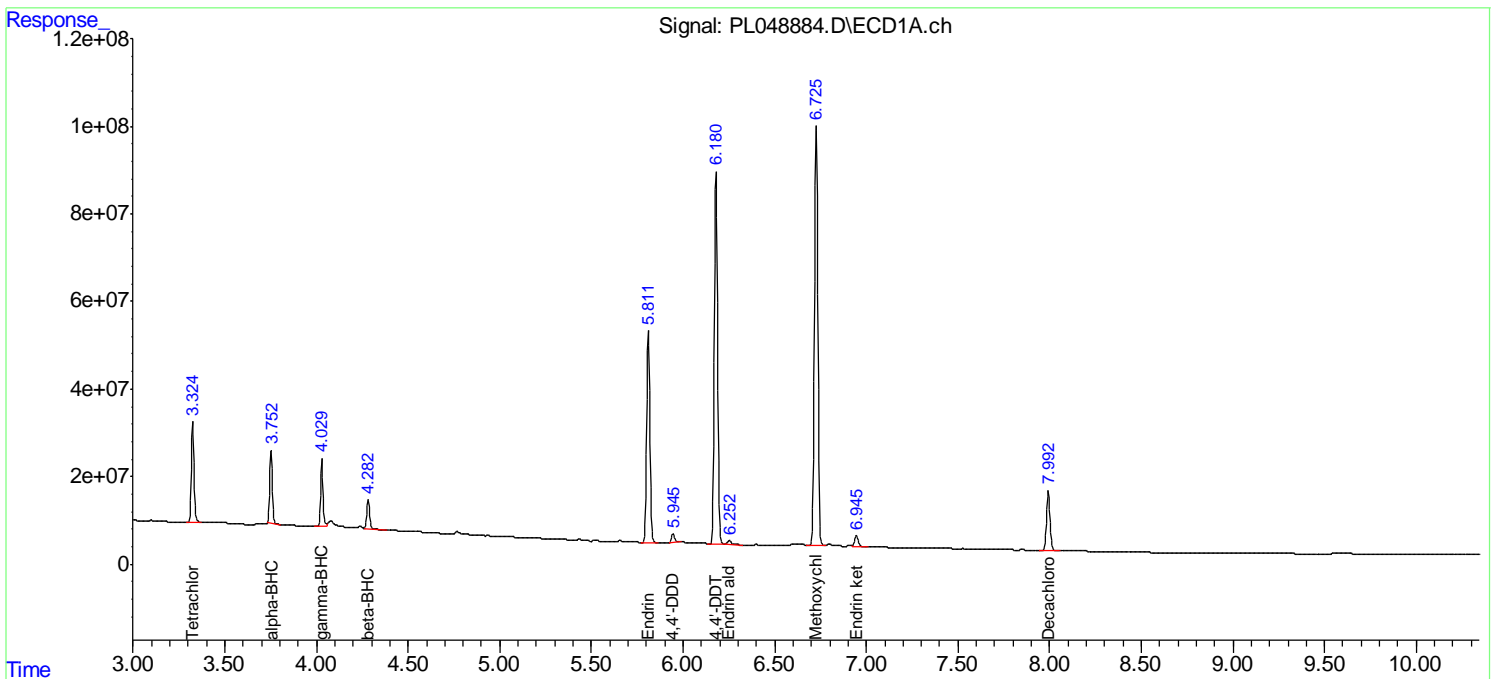
(f)=RT Delta > 1/2 Window (#)=Amounts differ by > 25% (m)=manual int.

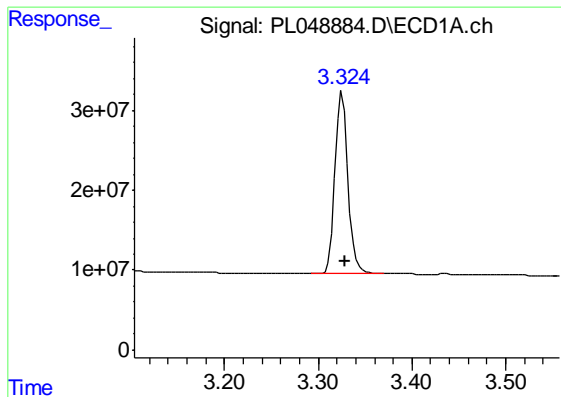
Data Path : Z:\pestpcbsrv\HPCHEM1\ECD_L\Data\PL052319\
 Data File : PL048884.D
 Signal(s) : Signal #1: ECD1A.ch Signal #2: ECD2B.ch
 Acq On : 23 May 2019 16:59
 Operator : SM\AJ
 Sample : PEM
 Misc :
 ALS Vial : 3 Sample Multiplier: 1

Instrument :
 ECD_L
 ClientSampled :
 PEM

Integration File signal 1: autoint1.e
 Integration File signal 2: autoint2.e
 Quant Time: May 24 01:04:14 2019
 Quant Method : Z:\pestpcbsrv\HPCHEM1\ECD_L\methods\PL050119.M
 Quant Title : GC Extractables
 QLast Update : Thu May 02 09:36:55 2019
 Response via : Initial Calibration
 Integrator: ChemStation

Volume Inj. : 1 µl
 Signal #1 Phase : ZB-MR2 Signal #2 Phase: ZB-MR1
 Signal #1 Info : 30M x 0.32mm x0.2 Signal #2 Info : 30M x 0.32mm x0.5µm

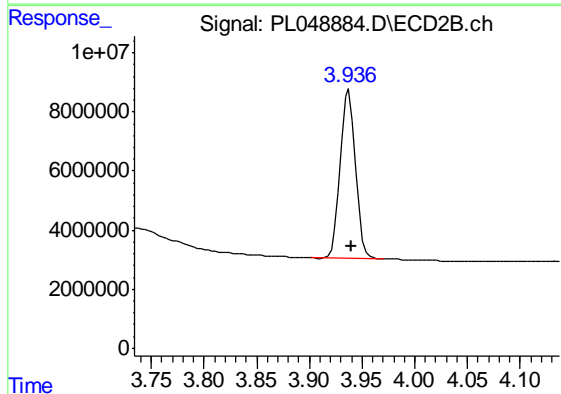




#1 Tetrachloro-m-xylene

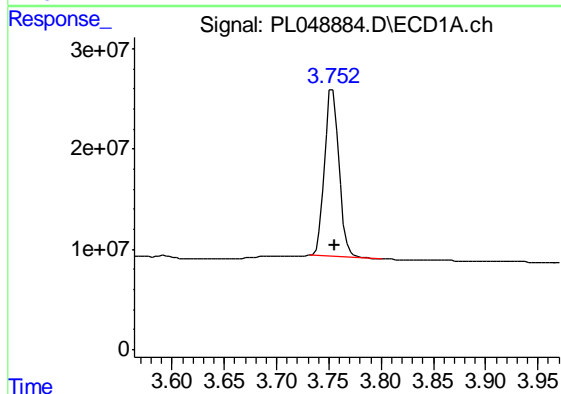
R.T.: 3.326 min
 Delta R.T.: -0.002 min
 Response: 218264202
 Conc: 22.53 ng/ml

Instrument :
 ECD_L
 ClientSampled :
 PEM



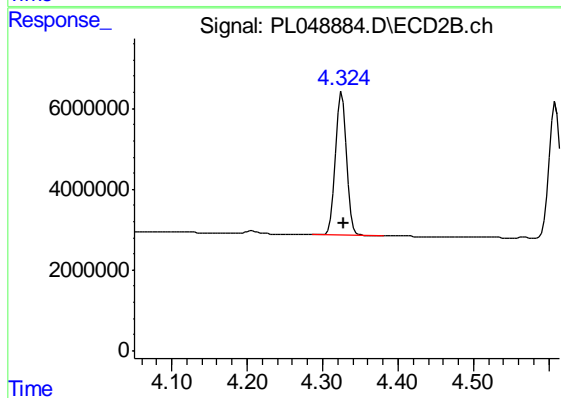
#1 Tetrachloro-m-xylene

R.T.: 3.938 min
 Delta R.T.: -0.002 min
 Response: 57405473
 Conc: 23.05 ng/ml



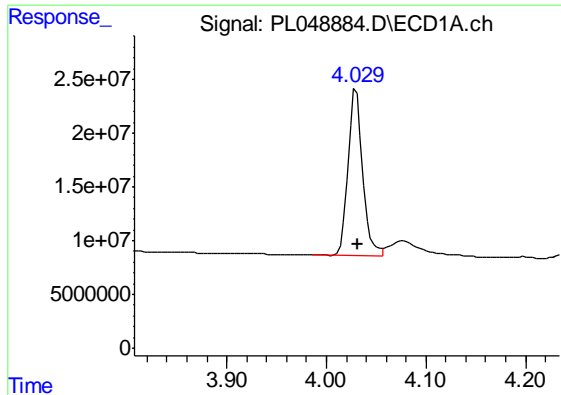
#2 alpha-BHC

R.T.: 3.754 min
 Delta R.T.: -0.002 min
 Response: 160063629
 Conc: 10.35 ng/ml



#2 alpha-BHC

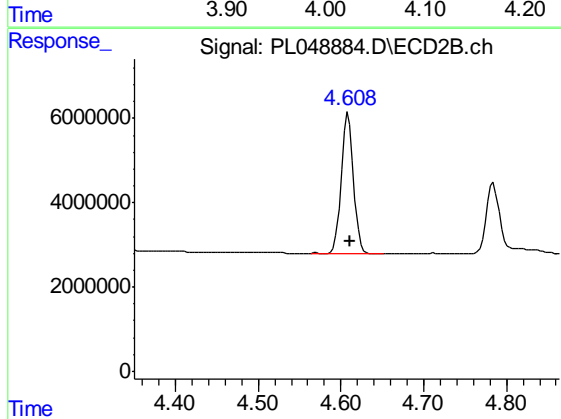
R.T.: 4.326 min
 Delta R.T.: -0.002 min
 Response: 35765639
 Conc: 10.18 ng/ml



#3 gamma-BHC (Lindane)

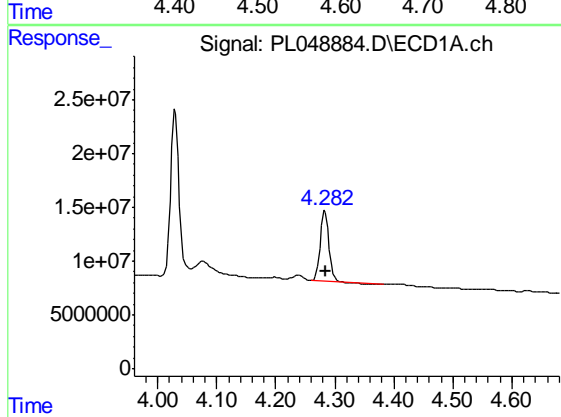
R.T.: 4.030 min
 Delta R.T.: -0.002 min
 Response: 156858953
 Conc: 11.04 ng/ml

Instrument :
 ECD_L
 ClientSampled :
 PEM



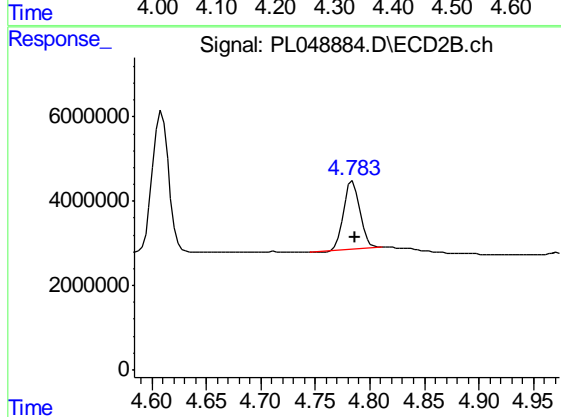
#3 gamma-BHC (Lindane)

R.T.: 4.609 min
 Delta R.T.: -0.003 min
 Response: 34550762
 Conc: 10.58 ng/ml



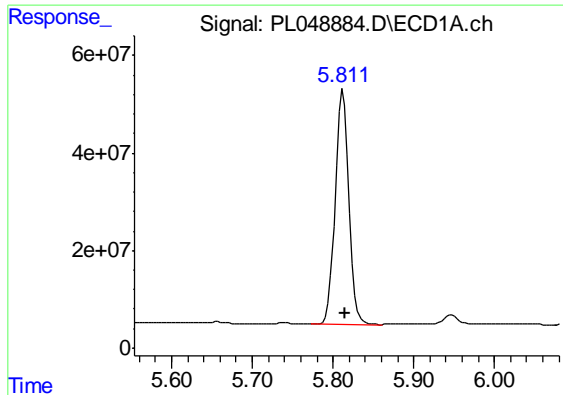
#6 beta-BHC

R.T.: 4.283 min
 Delta R.T.: -0.002 min
 Response: 66684355
 Conc: 11.30 ng/ml



#6 beta-BHC

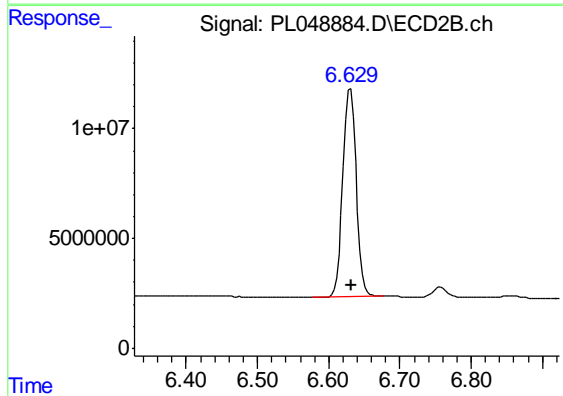
R.T.: 4.784 min
 Delta R.T.: -0.002 min
 Response: 16830808
 Conc: 10.82 ng/ml



#14 Endrin

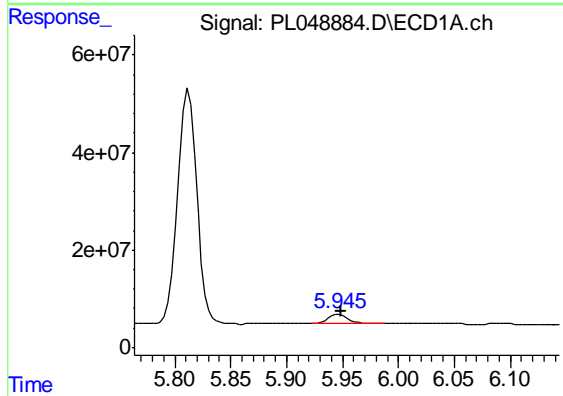
R.T.: 5.812 min
 Delta R.T.: -0.002 min
 Response: 573726274
 Conc: 47.13 ng/ml

Instrument :
 ECD_L
 ClientSampled :
 PEM



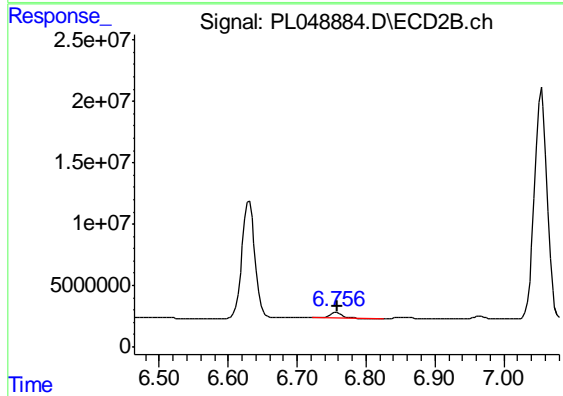
#14 Endrin

R.T.: 6.631 min
 Delta R.T.: -0.002 min
 Response: 123785975
 Conc: 47.47 ng/ml



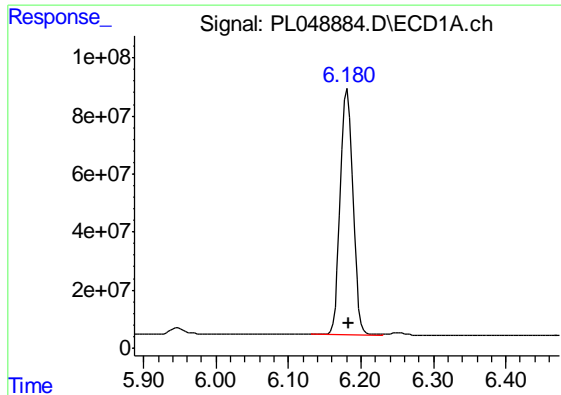
#16 4,4'-DDD

R.T.: 5.947 min
 Delta R.T.: -0.002 min
 Response: 23419478
 Conc: 2.41 ng/ml



#16 4,4'-DDD

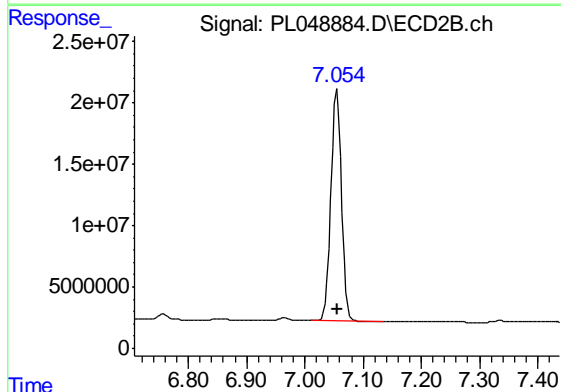
R.T.: 6.757 min
 Delta R.T.: -0.002 min
 Response: 6219958
 Conc: 2.77 ng/ml



#17 4,4'-DDT

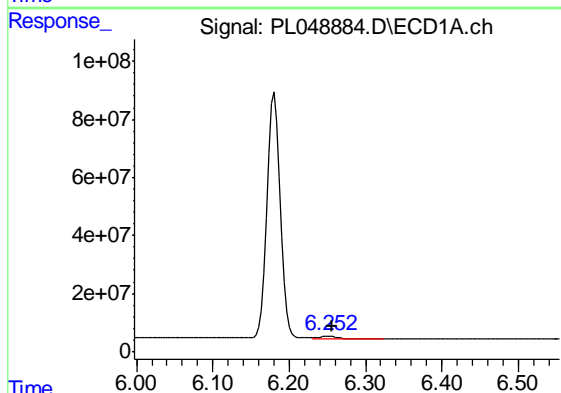
R.T.: 6.181 min
 Delta R.T.: -0.003 min
 Response: 1016492016
 Conc: 101.18 ng/ml

Instrument :
 ECD_L
 ClientSampled :
 PEM



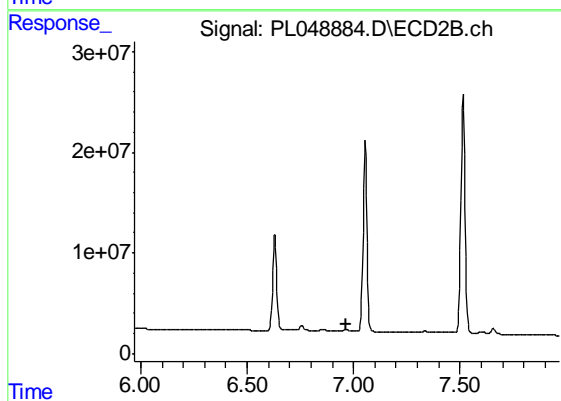
#17 4,4'-DDT

R.T.: 7.055 min
 Delta R.T.: -0.001 min
 Response: 241336042
 Conc: 102.84 ng/ml



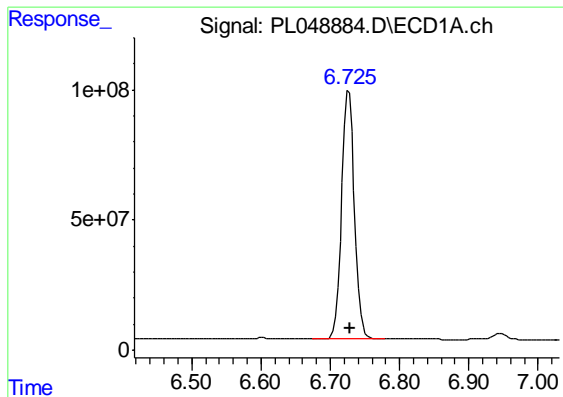
#18 Endrin aldehyde

R.T.: 6.253 min
 Delta R.T.: -0.003 min
 Response: 11466040
 Conc: 1.18 ng/ml



#18 Endrin aldehyde

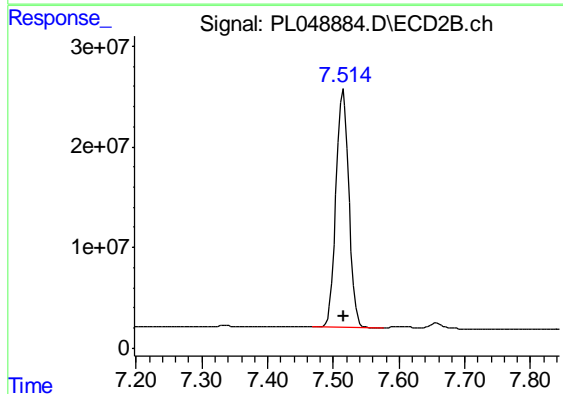
R.T.: 0.000 min
 Exp R.T. : 6.967 min
 Response: 0
 Conc: N.D.



#20 Methoxychlor

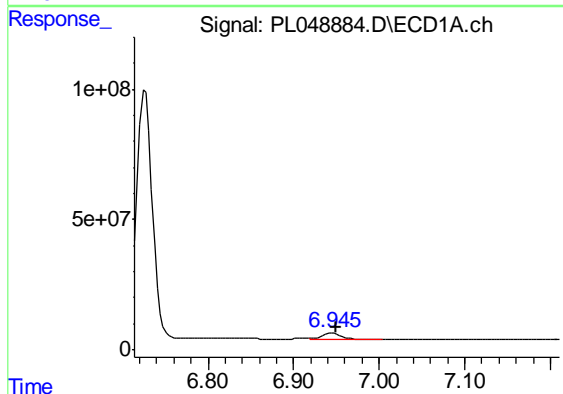
R.T.: 6.727 min
 Delta R.T.: -0.002 min
 Response: 1224411399
 Conc: 224.88 ng/ml

Instrument :
 ECD_L
 ClientSampled :
 PEM



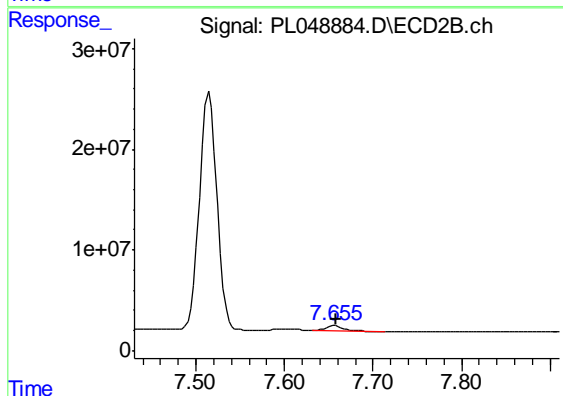
#20 Methoxychlor

R.T.: 7.515 min
 Delta R.T.: -0.001 min
 Response: 322188760
 Conc: 236.00 ng/ml



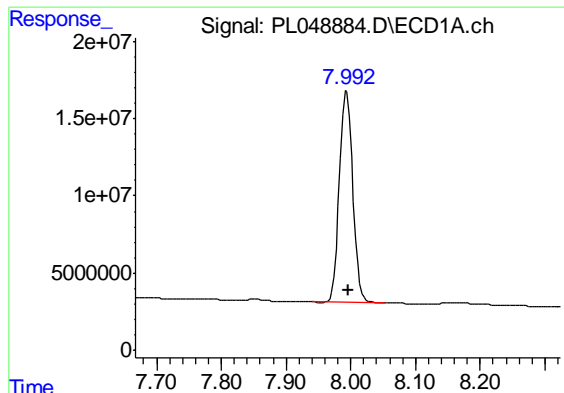
#21 Endrin ketone

R.T.: 6.946 min
 Delta R.T.: -0.004 min
 Response: 31285370
 Conc: 2.68 ng/ml



#21 Endrin ketone

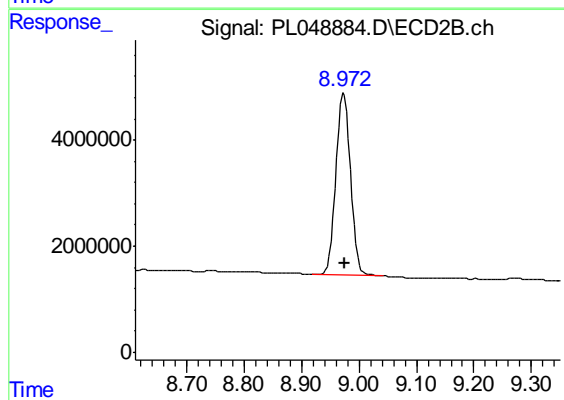
R.T.: 7.656 min
 Delta R.T.: -0.002 min
 Response: 6791473
 Conc: 2.60 ng/ml



#28 Decachlorobiphenyl

R.T.: 7.994 min
Delta R.T.: -0.002 min
Response: 196079888
Conc: 19.50 ng/ml

Instrument :
ECD_L
ClientSampleId :
PEM



#28 Decachlorobiphenyl

R.T.: 8.973 min
Delta R.T.: -0.002 min
Response: 60934396
Conc: 22.96 ng/ml