

Data Path : Z:\pestpcbsrv\HPCHEM1\ECD_L\Data\PL052319\
 Data File : PL048899.D
 Signal(s) : Signal #1: ECD1A.ch Signal #2: ECD2B.ch
 Acq On : 23 May 2019 20:38
 Operator : SM\AJ
 Sample : K2970-16
 Misc :
 ALS Vial : 30 Sample Multiplier: 1

Instrument :
 ECD_L
 ClientSampleId :
 TP-9-S

Integration File signal 1: autoint1.e
 Integration File signal 2: autoint2.e
 Quant Time: May 24 01:07:21 2019
 Quant Method : Z:\pestpcbsrv\HPCHEM1\ECD_L\methods\PL050119.M
 Quant Title : GC Extractables
 QLast Update : Thu May 02 09:36:55 2019
 Response via : Initial Calibration
 Integrator: ChemStation

Volume Inj. : 1 µl
 Signal #1 Phase : ZB-MR2 Signal #2 Phase: ZB-MR1
 Signal #1 Info : 30M x 0.32mm x0.2 Signal #2 Info : 30M x 0.32mm x0.5µm

Compound	RT#1	RT#2	Resp#1	Resp#2	ng/ml	ng/ml

System Monitoring Compounds						
1) SA Tetrachlo...	3.326	3.937	188.5E6	52319283	19.457	21.004
28) SA Decachlor...	7.994	8.973	178.8E6	51931541	17.782	19.565

Target Compounds

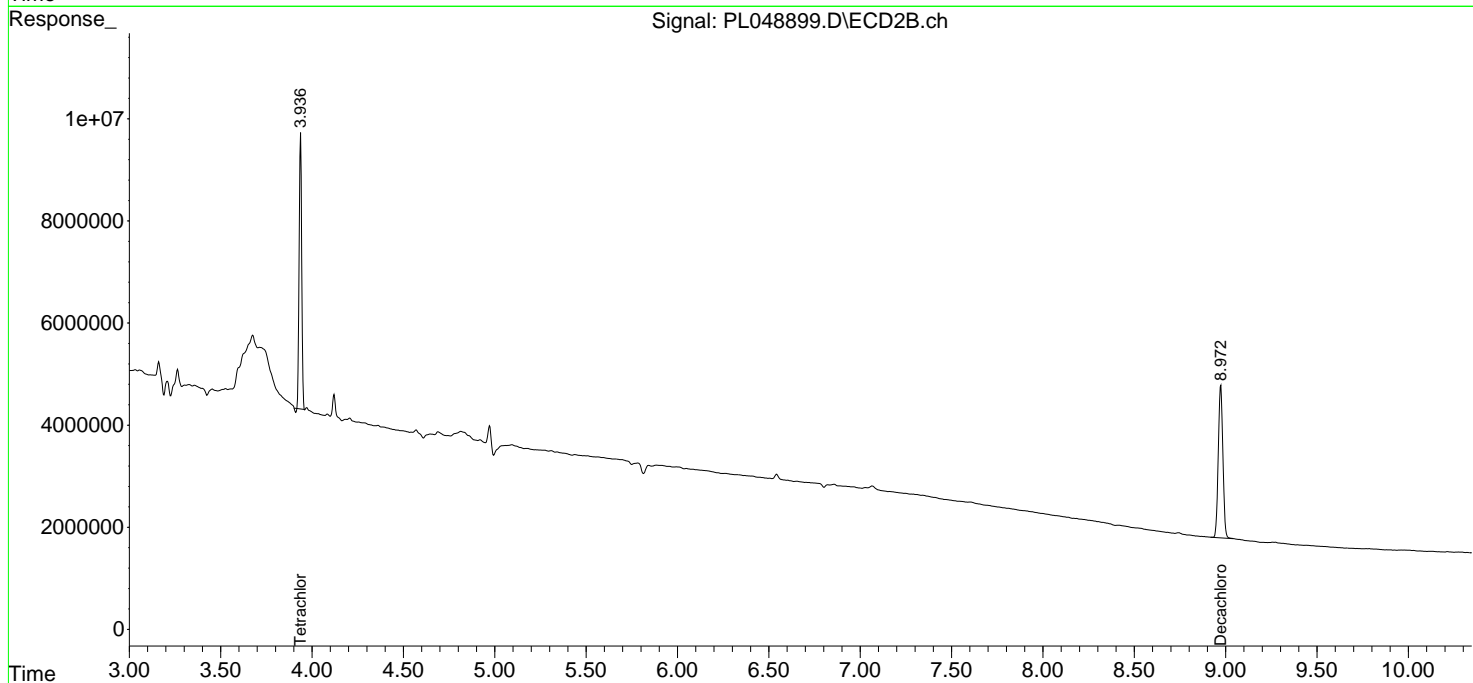
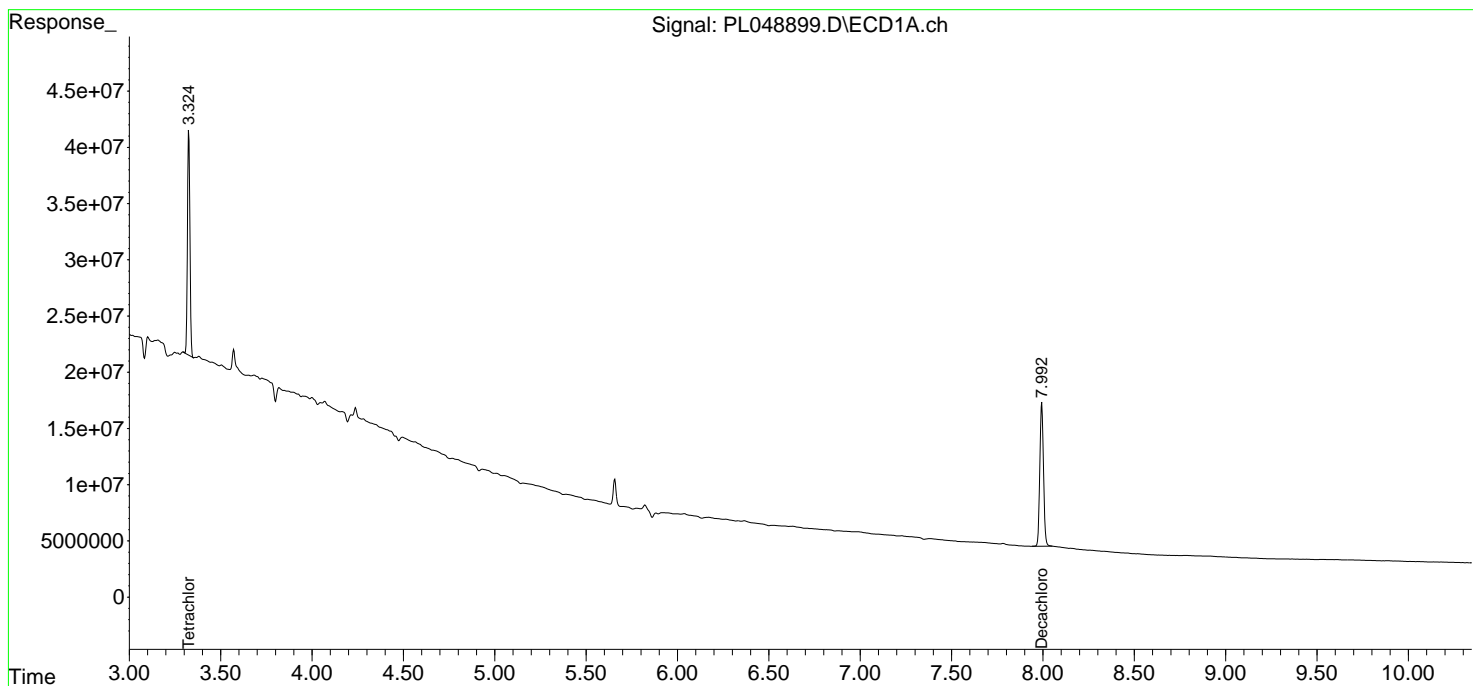
(f)=RT Delta > 1/2 Window (#)=Amounts differ by > 25% (m)=manual int.

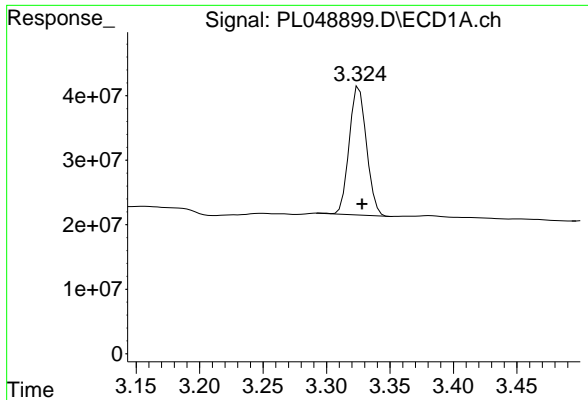
Data Path : Z:\pestpcbsrv\HPCHEM1\ECD_L\Data\PL052319\
 Data File : PL048899.D
 Signal(s) : Signal #1: ECD1A.ch Signal #2: ECD2B.ch
 Acq On : 23 May 2019 20:38
 Operator : SM\AJ
 Sample : K2970-16
 Misc :
 ALS Vial : 30 Sample Multiplier: 1

Instrument :
 ECD_L
 ClientSampled :
 TP-9-S

Integration File signal 1: autoint1.e
 Integration File signal 2: autoint2.e
 Quant Time: May 24 01:07:21 2019
 Quant Method : Z:\pestpcbsrv\HPCHEM1\ECD_L\methods\PL050119.M
 Quant Title : GC Extractables
 QLast Update : Thu May 02 09:36:55 2019
 Response via : Initial Calibration
 Integrator: ChemStation

Volume Inj. : 1 µl
 Signal #1 Phase : ZB-MR2 Signal #2 Phase: ZB-MR1
 Signal #1 Info : 30M x 0.32mm x0.2 Signal #2 Info : 30M x 0.32mm x0.5µm

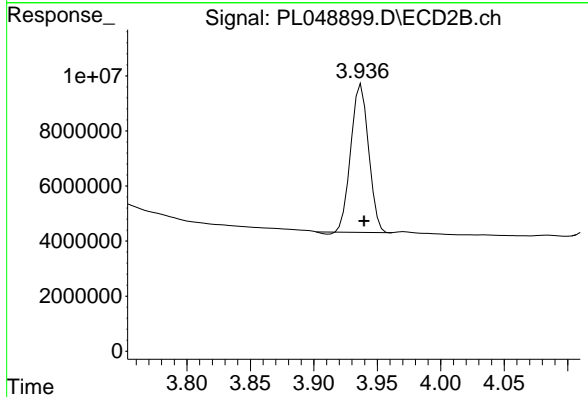




#1 Tetrachloro-m-xylene

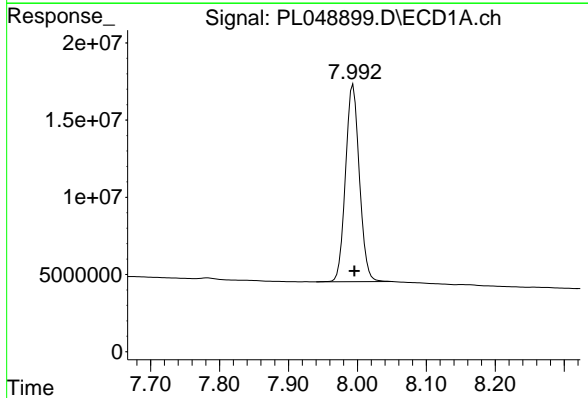
R.T.: 3.326 min
 Delta R.T.: -0.002 min
 Response: 188472683
 Conc: 19.46 ng/ml

Instrument :
 ECD_L
 ClientSampled :
 TP-9-S



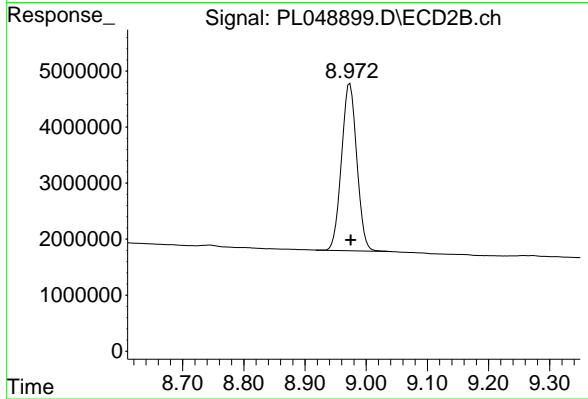
#1 Tetrachloro-m-xylene

R.T.: 3.937 min
 Delta R.T.: -0.002 min
 Response: 52319283
 Conc: 21.00 ng/ml



#28 Decachlorobiphenyl

R.T.: 7.994 min
 Delta R.T.: -0.002 min
 Response: 178787409
 Conc: 17.78 ng/ml



#28 Decachlorobiphenyl

R.T.: 8.973 min
 Delta R.T.: -0.002 min
 Response: 51931541
 Conc: 19.57 ng/ml