

Data Path : Z:\pestpcbsrv\HPCHEM1\ECD_L\Data\PL052419\
 Data File : PL048980.D
 Signal(s) : Signal #1: ECD1A.ch Signal #2: ECD2B.ch
 Acq On : 25 May 2019 05:27
 Operator : SM\AJ
 Sample : K2993-11
 Misc :
 ALS Vial : 64 Sample Multiplier: 1

Instrument :
 ECD_L
 ClientSampleId :
 SB-11_2.0-2.5

Integration File signal 1: autoint1.e
 Integration File signal 2: autoint2.e
 Quant Time: May 25 05:44:43 2019
 Quant Method : Z:\pestpcbsrv\HPCHEM1\ECD_L\methods\PL050119.M
 Quant Title : GC Extractables
 QLast Update : Thu May 02 09:36:55 2019
 Response via : Initial Calibration
 Integrator: ChemStation

Volume Inj. : 1 µl
 Signal #1 Phase : ZB-MR2 Signal #2 Phase: ZB-MR1
 Signal #1 Info : 30M x 0.32mm x0.2 Signal #2 Info : 30M x 0.32mm x0.5µm

Compound	RT#1	RT#2	Resp#1	Resp#2	ng/ml	ng/ml

System Monitoring Compounds						
1) SA Tetrachlo...	3.326	3.937	192.4E6	49803260	19.862	19.994
28) SA Decachlor...	7.991	8.972	168.0E6	47085715	16.713	17.739

Target Compounds

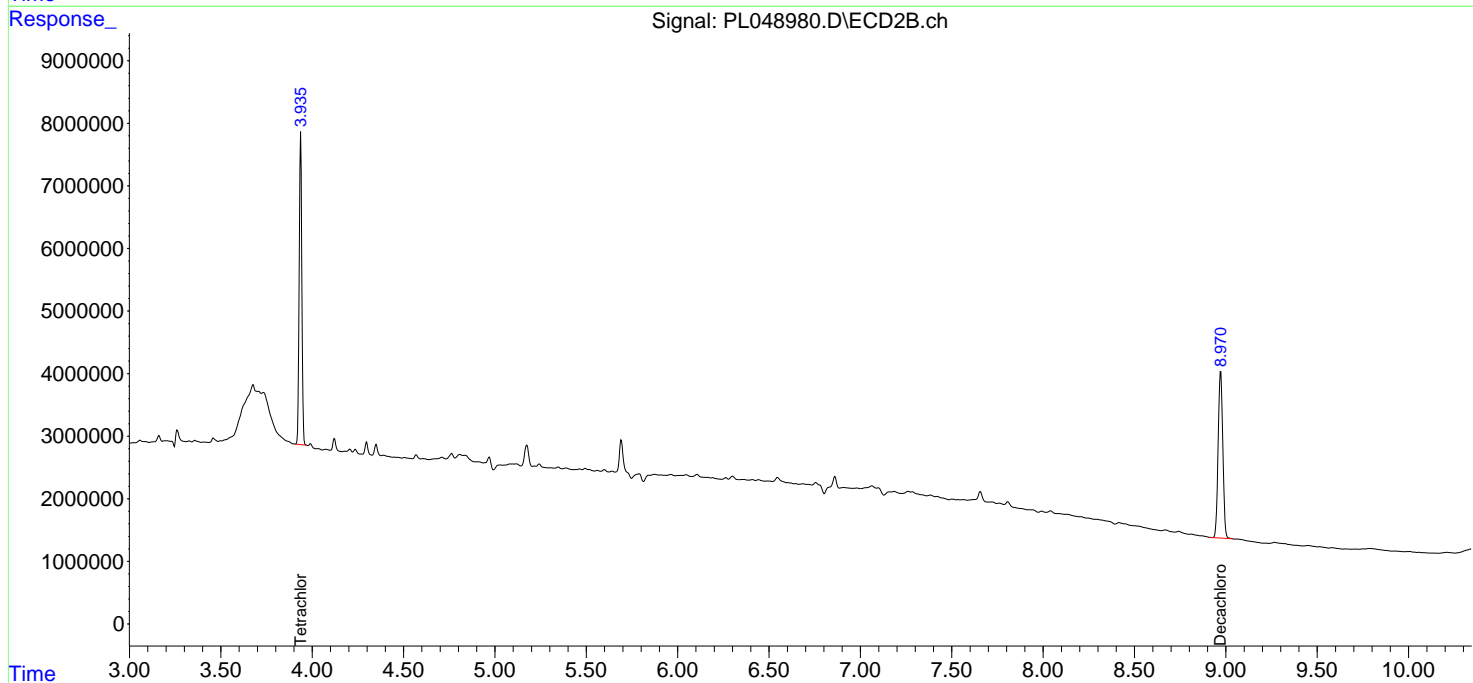
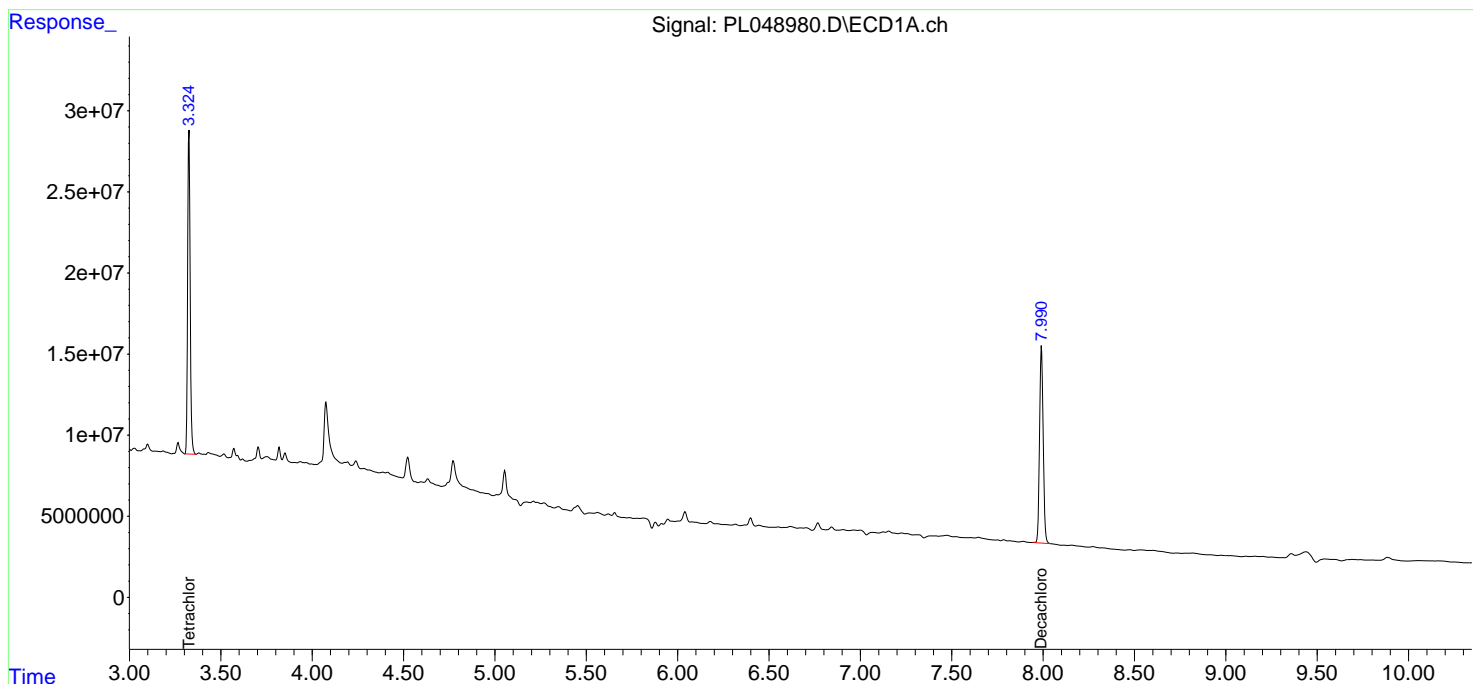
(f)=RT Delta > 1/2 Window (#)=Amounts differ by > 25% (m)=manual int.

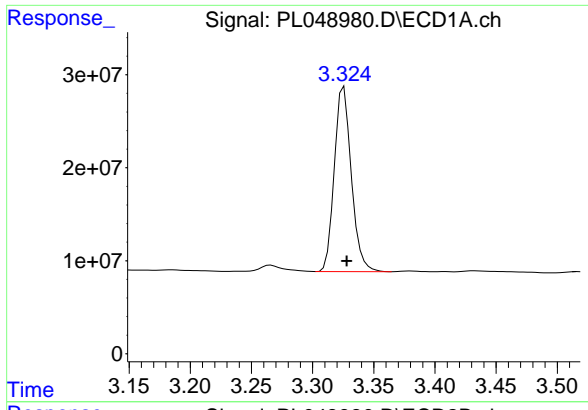
Data Path : Z:\pestpcbsrv\HPCHEM1\ECD_L\Data\PL052419\
 Data File : PL048980.D
 Signal(s) : Signal #1: ECD1A.ch Signal #2: ECD2B.ch
 Acq On : 25 May 2019 05:27
 Operator : SM\AJ
 Sample : K2993-11
 Misc :
 ALS Vial : 64 Sample Multiplier: 1

Instrument :
 ECD_L
 ClientSampleId :
 SB-11_2.0-2.5

Integration File signal 1: autoint1.e
 Integration File signal 2: autoint2.e
 Quant Time: May 25 05:44:43 2019
 Quant Method : Z:\pestpcbsrv\HPCHEM1\ECD_L\methods\PL050119.M
 Quant Title : GC Extractables
 QLast Update : Thu May 02 09:36:55 2019
 Response via : Initial Calibration
 Integrator: ChemStation

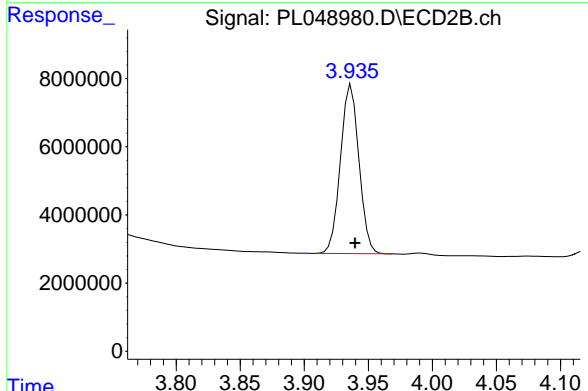
Volume Inj. : 1 µl
 Signal #1 Phase : ZB-MR2 Signal #2 Phase: ZB-MR1
 Signal #1 Info : 30M x 0.32mm x0.2 Signal #2 Info : 30M x 0.32mm x0.5µm



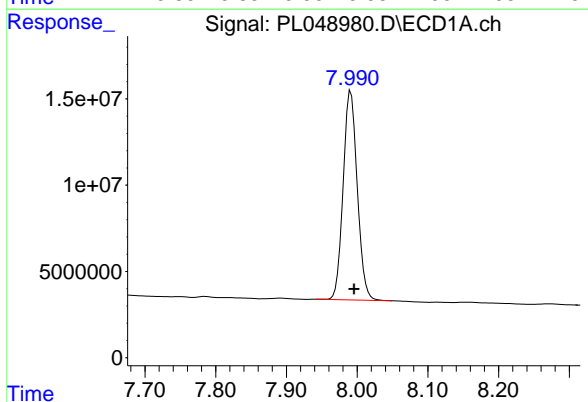


#1 Tetrachloro-m-xylene
 R.T.: 3.326 min
 Delta R.T.: -0.002 min
 Response: 192396299
 Conc: 19.86 ng/ml

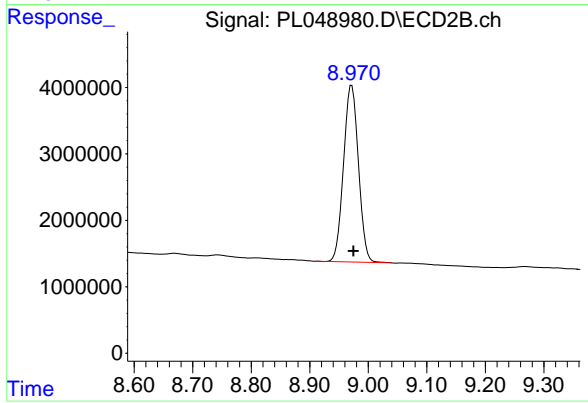
Instrument :
 ECD_L
 ClientSampled :
 SB-11_2.0-2.5



#1 Tetrachloro-m-xylene
 R.T.: 3.937 min
 Delta R.T.: -0.003 min
 Response: 49803260
 Conc: 19.99 ng/ml



#28 Decachlorobiphenyl
 R.T.: 7.991 min
 Delta R.T.: -0.005 min
 Response: 168038872
 Conc: 16.71 ng/ml



#28 Decachlorobiphenyl
 R.T.: 8.972 min
 Delta R.T.: -0.003 min
 Response: 47085715
 Conc: 17.74 ng/ml