

Data Path : Z:\pestpcbsrv\HPCHEM1\ECD_L\Data\PL052421\
 Data File : PL066847.D
 Signal(s) : Signal #1: ECD1A.ch Signal #2: ECD2B.ch
 Acq On : 24 May 2021 21:25
 Operator : AR\AJ
 Sample : PCHLORICC250
 Misc :
 ALS Vial : 13 Sample Multiplier: 1

Instrument :
 ECD_L
ClientSampleId :
 PCHLORICC250

Manual Integrations
APPROVED
 Ankita
 5/26/2021 4:04:03 PM

Integration File signal 1: autoint1.e
 Integration File signal 2: autoint2.e
 Quant Time: May 25 05:58:10 2021
 Quant Method : Z:\pestpcbsrv\HPCHEM1\ECD_L\methods\PL052421.M
 Quant Title : GC Extractables
 QLast Update : Tue May 25 05:57:00 2021
 Response via : Initial Calibration
 Integrator: ChemStation

Volume Inj. : 1 µl
 Signal #1 Phase : ZB-MR2 Signal #2 Phase: ZB-MR1
 Signal #1 Info : 30M x 0.32mm x0.2 Signal #2 Info : 30M x 0.32mm x0.5µm

Compound	RT#1	RT#2	Resp#1	Resp#2	ng/ml	ng/ml

System Monitoring Compounds						
1) SA Tetrachlo...	4.480	5.532	14503029	20861999	24.874m	24.914
28) SA Decachlor...	10.225	11.432	18897875	21889829	26.217	26.460
Target Compounds						
23) Chlordane-1	5.801	6.914	5145231	6946366	248.112	233.461
24) Chlordane-2	6.487	7.505	7336861	9334871	260.408	252.510
25) Chlordane-3	7.186	8.261	18876563	30849252	237.812	241.887
26) Chlordane-4	7.253	8.344	20216172	37571466	235.243	244.138
27) Chlordane-5	8.192	9.229	6902013	6682078	245.096	240.252

(f)=RT Delta > 1/2 Window (#)=Amounts differ by > 25% (m)=manual int.

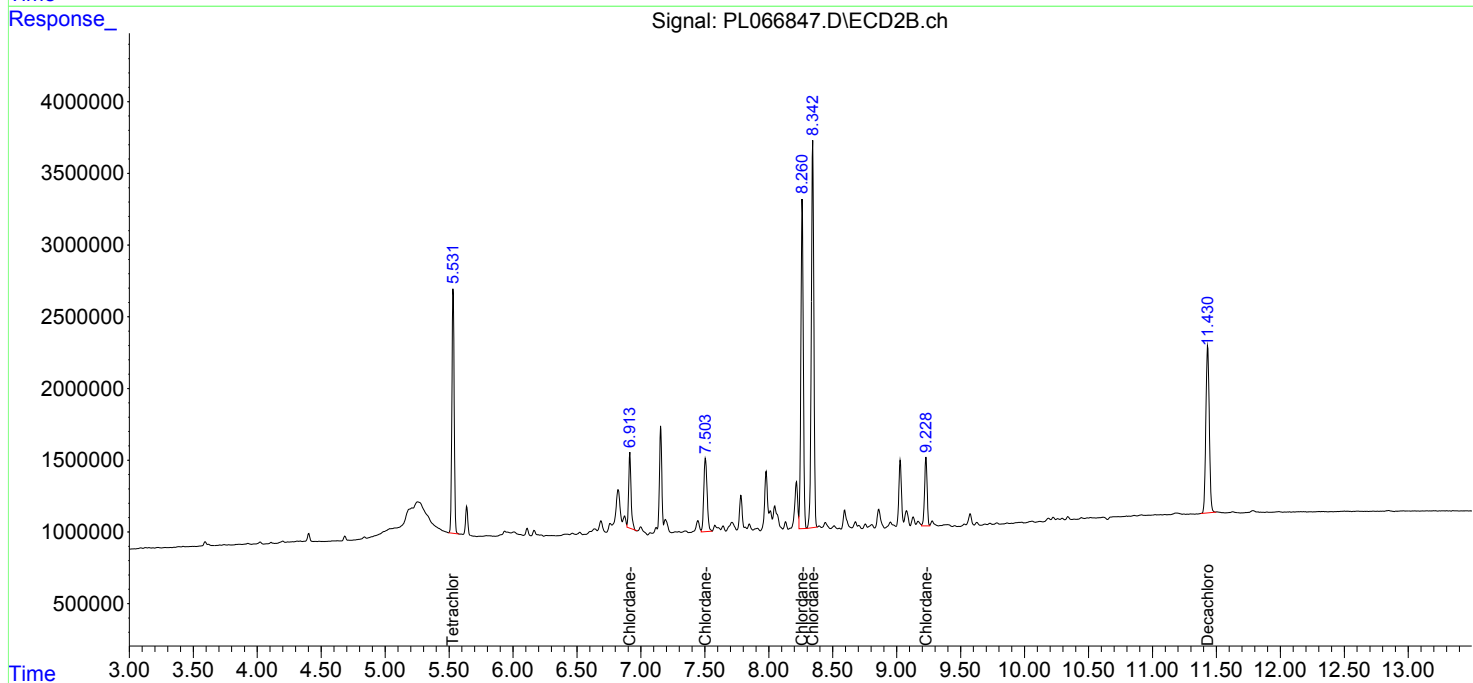
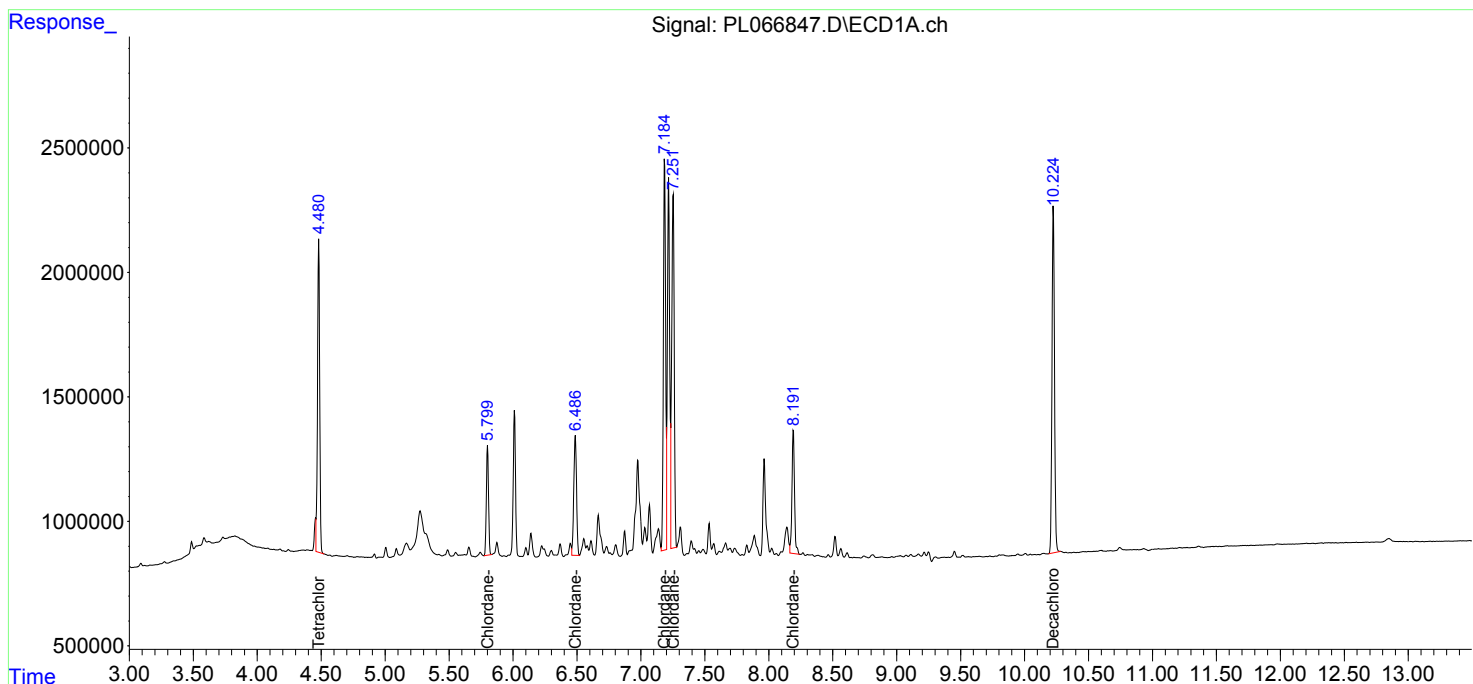
Data Path : Z:\pestpcbsrv\HPCHEM1\ECD_L\Data\PL052421\
 Data File : PL066847.D
 Signal(s) : Signal #1: ECD1A.ch Signal #2: ECD2B.ch
 Acq On : 24 May 2021 21:25
 Operator : AR\AJ
 Sample : PCHLORICC250
 Misc :
 ALS Vial : 13 Sample Multiplier: 1

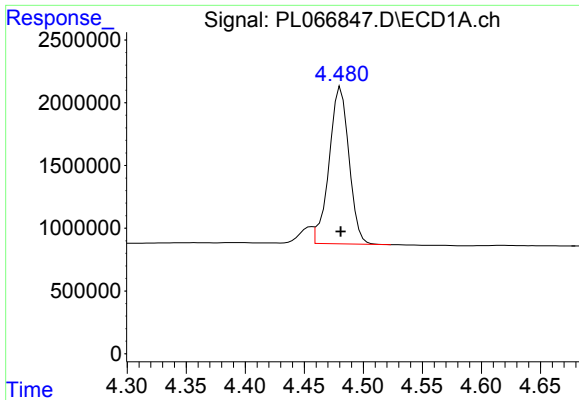
Instrument :
 ECD_L
Client Sampled :
 PCHLORICC250

Manual Integrations
APPROVED
 Ankita
 5/26/2021 4:04:03 PM

Integration File signal 1: autoint1.e
 Integration File signal 2: autoint2.e
 Quant Time: May 25 05:58:10 2021
 Quant Method : Z:\pestpcbsrv\HPCHEM1\ECD_L\methods\PL052421.M
 Quant Title : GC Extractables
 QLast Update : Tue May 25 05:57:00 2021
 Response via : Initial Calibration
 Integrator: ChemStation

Volume Inj. : 1 µl
 Signal #1 Phase : ZB-MR2 Signal #2 Phase: ZB-MR1
 Signal #1 Info : 30M x 0.32mm x0.2 Signal #2 Info : 30M x 0.32mm x0.5µm

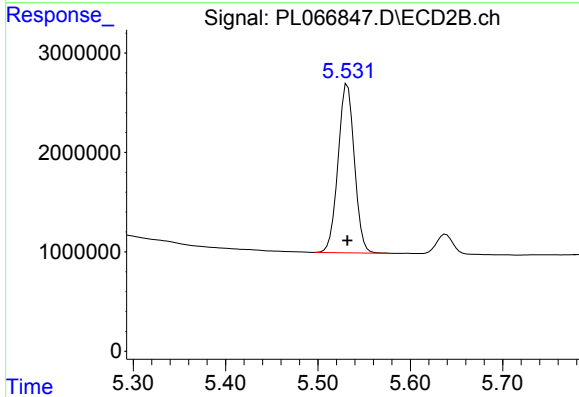




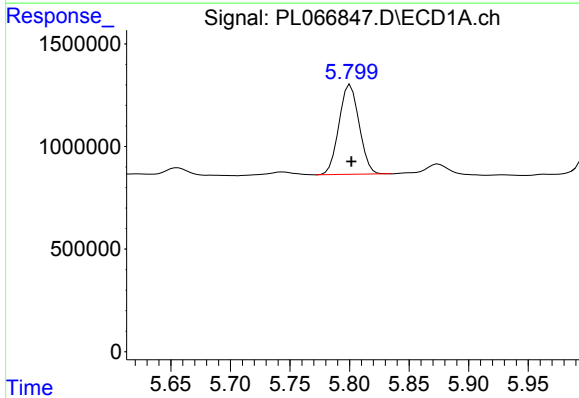
#1 Tetrachloro-m-xylene
 R.T.: 4.480 min
 Delta R.T.: -0.001 min
 Response: 14503029
 Conc: 24.87 ng/ml m

Instrument :
 ECD_L
 ClientSampleId :
 PCHLORICC250

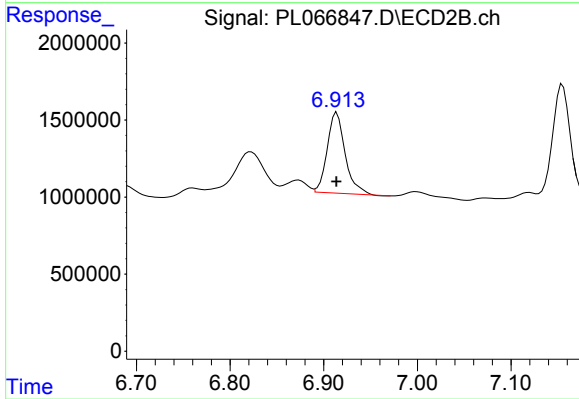
Manual Integrations
 APPROVED
 Ankita
 5/26/2021 4:04:03 PM



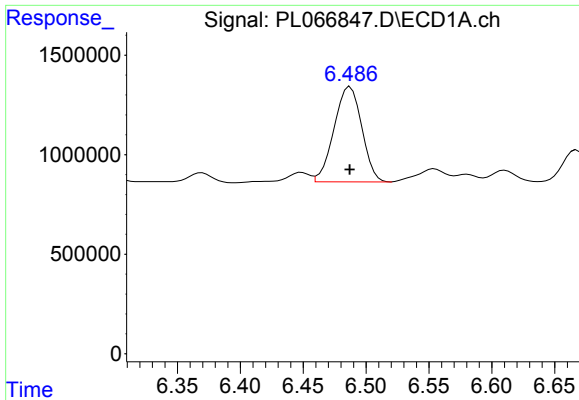
#1 Tetrachloro-m-xylene
 R.T.: 5.532 min
 Delta R.T.: 0.000 min
 Response: 20861999
 Conc: 24.91 ng/ml



#23 Chlordane-1
 R.T.: 5.801 min
 Delta R.T.: 0.000 min
 Response: 5145231
 Conc: 248.11 ng/ml



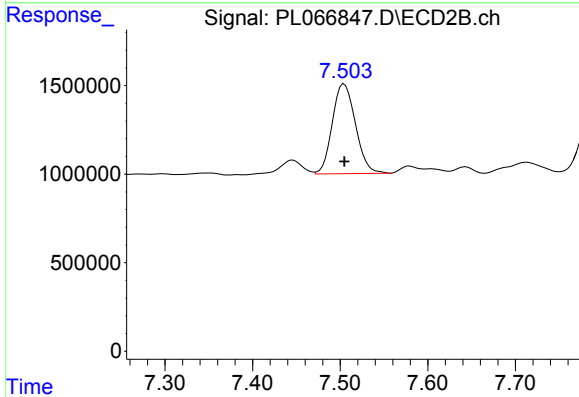
#23 Chlordane-1
 R.T.: 6.914 min
 Delta R.T.: 0.000 min
 Response: 6946366
 Conc: 233.46 ng/ml



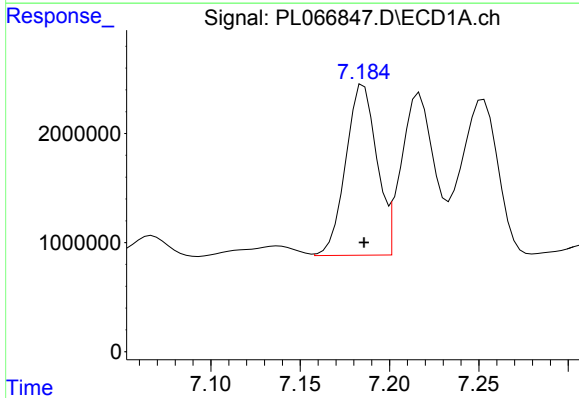
#24 Chlordane-2
 R.T.: 6.487 min
 Delta R.T.: 0.000 min
 Response: 7336861
 Conc: 260.41 ng/ml

Instrument :
 ECD_L
ClientSampled :
 PCHLORICC250

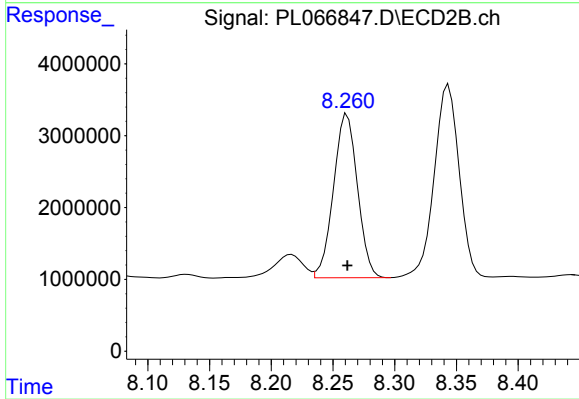
Manual Integrations
APPROVED
 Ankita
 5/26/2021 4:04:03 PM



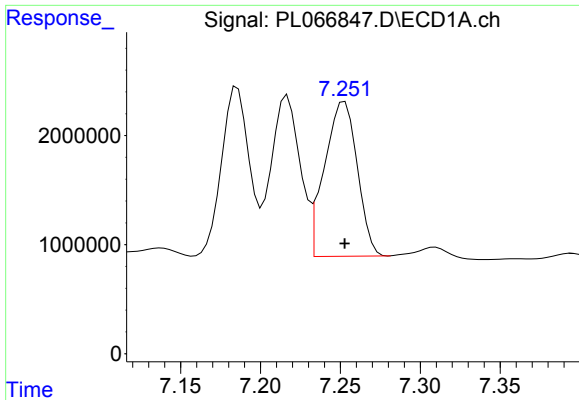
#24 Chlordane-2
 R.T.: 7.505 min
 Delta R.T.: 0.000 min
 Response: 9334871
 Conc: 252.51 ng/ml



#25 Chlordane-3
 R.T.: 7.186 min
 Delta R.T.: 0.000 min
 Response: 18876563
 Conc: 237.81 ng/ml



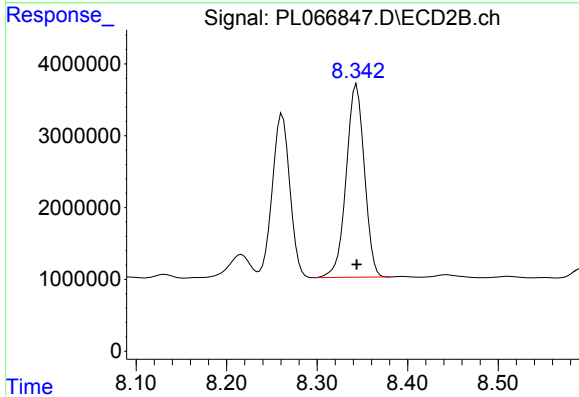
#25 Chlordane-3
 R.T.: 8.261 min
 Delta R.T.: 0.000 min
 Response: 30849252
 Conc: 241.89 ng/ml



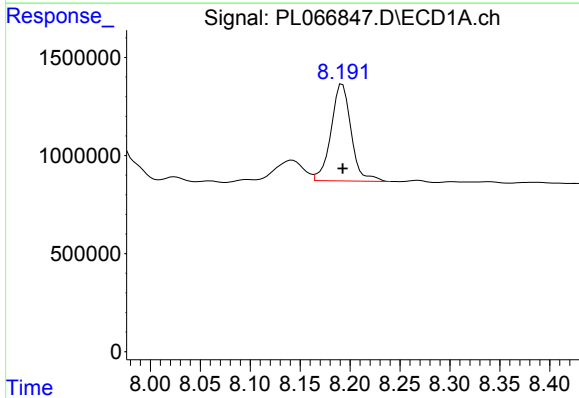
#26 Chlordane-4
 R.T.: 7.253 min
 Delta R.T.: 0.000 min
 Response: 20216172
 Conc: 235.24 ng/ml

Instrument :
 ECD_L
 ClientSampled :
 PCHLORICC250

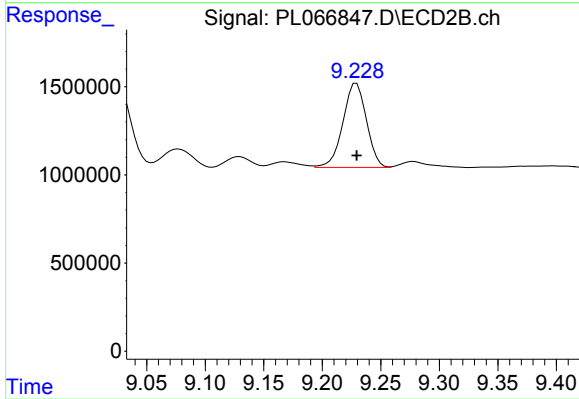
Manual Integrations
 APPROVED
 Ankita
 5/26/2021 4:04:03 PM



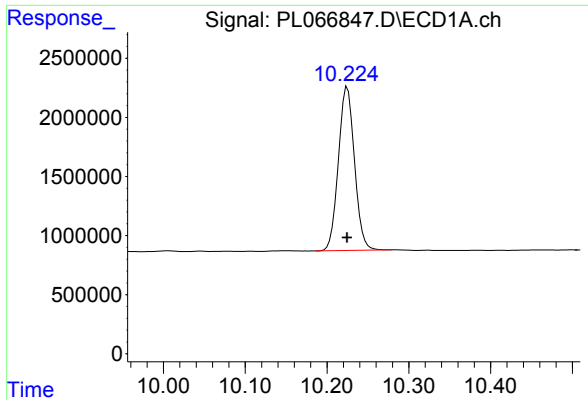
#26 Chlordane-4
 R.T.: 8.344 min
 Delta R.T.: 0.000 min
 Response: 37571466
 Conc: 244.14 ng/ml



#27 Chlordane-5
 R.T.: 8.192 min
 Delta R.T.: 0.000 min
 Response: 6902013
 Conc: 245.10 ng/ml



#27 Chlordane-5
 R.T.: 9.229 min
 Delta R.T.: 0.000 min
 Response: 6682078
 Conc: 240.25 ng/ml



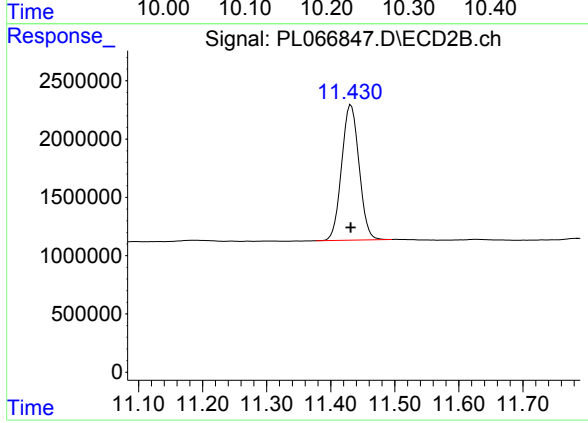
#28 Decachlorobiphenyl

R.T.: 10.225 min
Delta R.T.: 0.000 min
Response: 18897875
Conc: 26.22 ng/ml

Instrument :
ECD_L
ClientSampleId :
PCHLORICC250

Manual Integrations
APPROVED

Ankita
5/26/2021 4:04:03 PM



#28 Decachlorobiphenyl

R.T.: 11.432 min
Delta R.T.: 0.000 min
Response: 21889829
Conc: 26.46 ng/ml