

Data Path : Z:\pestpcbsrv\HPCHEM1\ECD_L\Data\PL052423\
 Data File : PL082970.D
 Signal(s) : Signal #1: ECD1A.ch Signal #2: ECD2B.ch
 Acq On : 24 May 2023 21:08
 Operator : AR\AJ
 Sample : PB153017BS
 Misc :
 ALS Vial : 12 Sample Multiplier: 1

Instrument :
 ECD_L
ClientSampleId :
 PB153017BS

Manual Integrations
APPROVED

Reviewed By :Abdul Mirza 05/25/2023
 Supervised By :Ankita Jodhani 05/26/2023

Integration File signal 1: autoint1.e
 Integration File signal 2: autoint2.e
 Quant Time: May 25 05:30:52 2023
 Quant Method : Z:\pestpcbsrv\HPCHEM1\ECD_L\methods\PL051923.M
 Quant Title : GC Extractables
 QLast Update : Sat May 20 04:58:53 2023
 Response via : Initial Calibration
 Integrator: ChemStation

Volume Inj. : 1 µl
 Signal #1 Phase : ZB-MR2 Signal #2 Phase: ZB-MR1
 Signal #1 Info : 30M x 0.32mm x0.2 Signal #2 Info : 30M x 0.32mm x0.5µm

Compound	RT#1	RT#2	Resp#1	Resp#2	ng/ml	ng/ml

System Monitoring Compounds						
1) SA Tetrachlo...	3.325	2.634	71743155	58578841	24.411	22.564
28) SA Decachlor...	8.745	7.745	54976043	60829085	26.212	24.463
Target Compounds						
2) A alpha-BHC	3.775	3.131	244.3E6	188.4E6	55.042	50.481
3) MA gamma-BHC...	4.103	3.458	213.6E6	175.0E6	51.552	52.510
4) MA Heptachlor	4.681	3.789	212.3E6	155.0E6	55.550	42.339
5) MB Aldrin	5.018	4.066	198.4E6	168.3E6	56.388	51.740
6) B beta-BHC	4.308	3.759	92788832	70512450	49.284	49.306
7) B delta-BHC	4.549	3.985	218.4E6	167.9E6	63.502	51.241
8) B Heptachlo...	5.445	4.568	175.4E6	152.4E6	54.830	51.342
9) A Endosulfan I	5.825	4.936	164.8E6	139.7E6	54.908	49.979
10) B gamma-Chl...	5.699	4.817	187.8E6	151.1E6	59.115	50.296
11) B alpha-Chl...	5.778	4.880	179.0E6	148.2E6	55.776	49.373
12) B 4,4'-DDE	5.956	5.071	156.8E6	130.1E6	56.881	53.554
13) MA Dieldrin	6.100	5.200	170.3E6	148.6E6	56.619	52.651
14) MA Endrin	6.326	5.475	151.7E6	135.3E6	56.466m	53.350
15) B Endosulfa...	6.550	5.772	140.3E6	121.8E6	53.356	49.225
16) A 4,4'-DDD	6.472	5.626	131.8E6	103.7E6	60.649	53.942
17) MA 4,4'-DDT	6.783	5.874	143.0E6	112.0E6	57.136	50.185
18) B Endrin al...	6.680	5.952	115.9E6	102.1E6	57.619	51.612
19) B Endosulfa...	6.914	6.174	145.0E6	126.0E6	56.576	51.460
20) A Methoxychlor	7.264	6.453	74131800	60441573	56.059	47.526
21) B Endrin ke...	7.393	6.678	148.1E6	135.3E6	58.050m	50.021
22) Mirex	7.857	6.850	113.0E6	118.7E6	53.914	50.714

(f)=RT Delta > 1/2 Window (#)=Amounts differ by > 25% (m)=manual int.

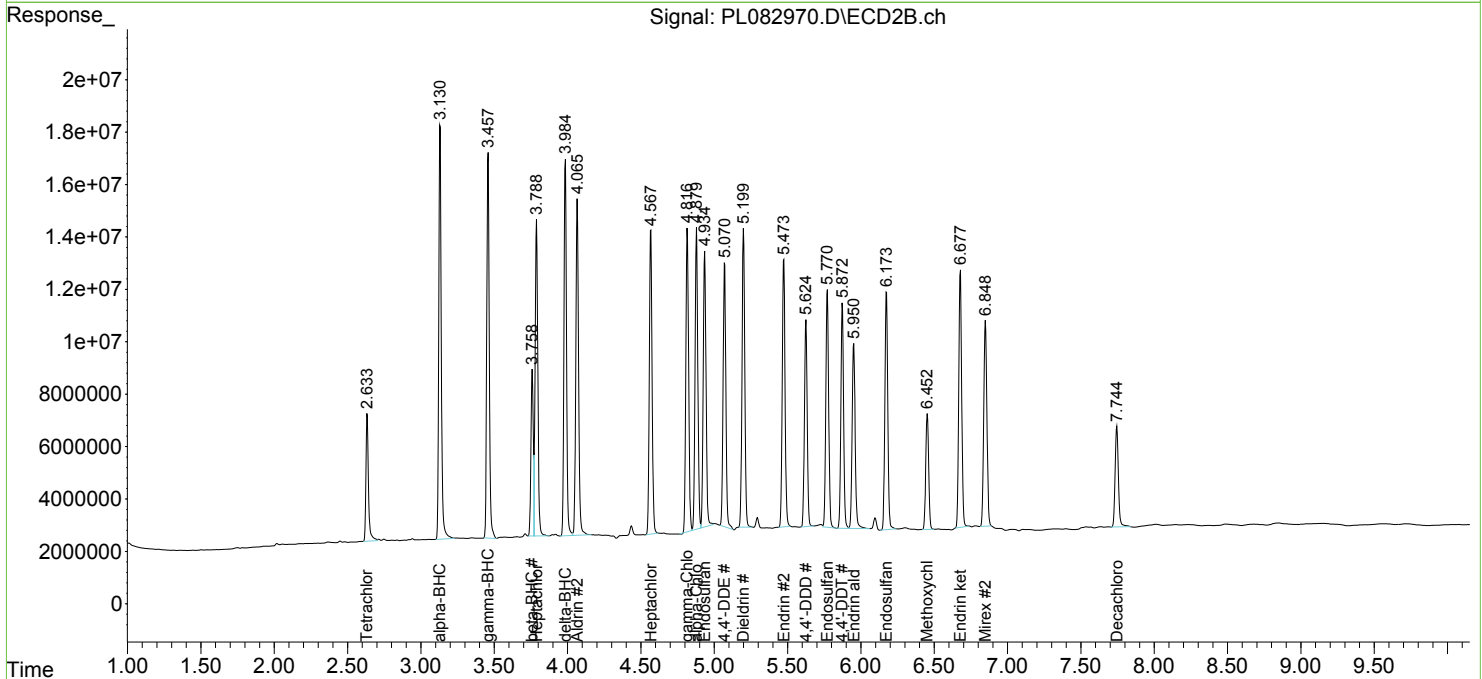
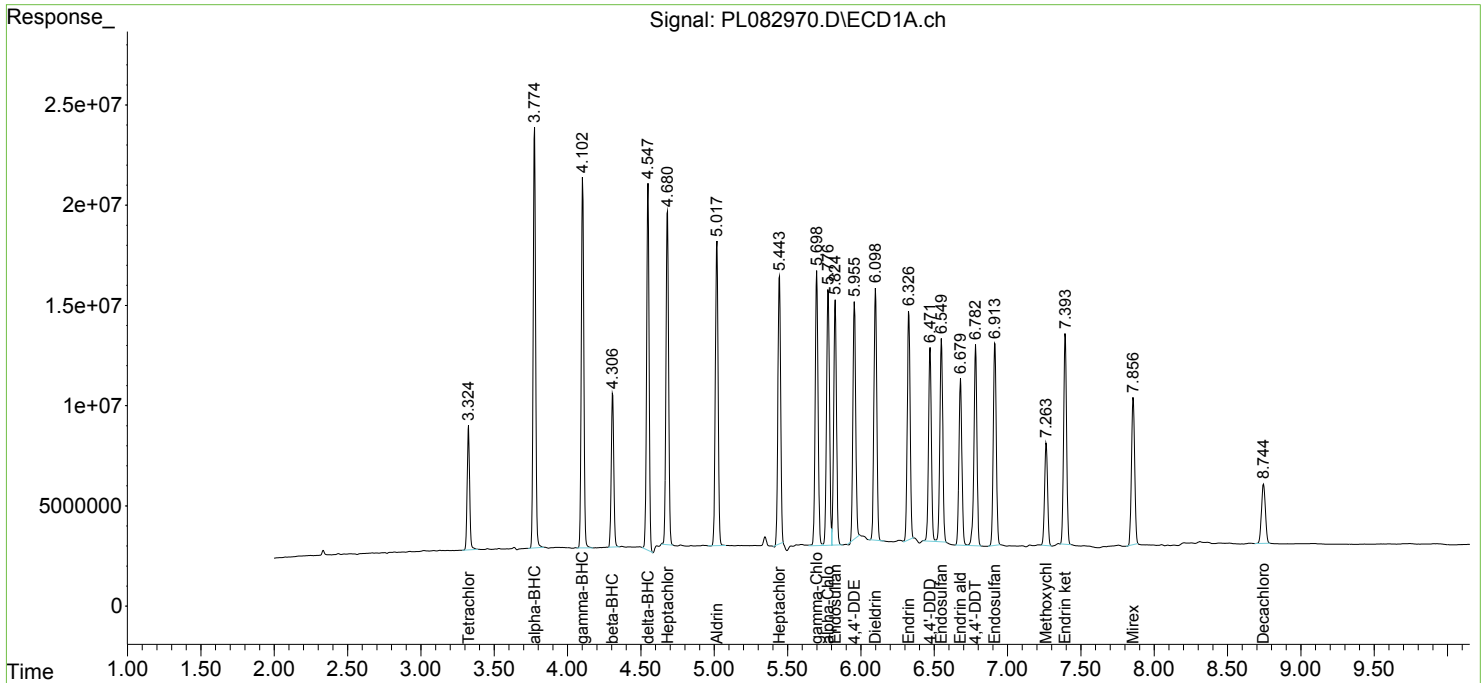
Data Path : Z:\pestpcbsrv\HPCHEM1\ECD_L\Data\PL052423\
 Data File : PL082970.D
 Signal(s) : Signal #1: ECD1A.ch Signal #2: ECD2B.ch
 Acq On : 24 May 2023 21:08
 Operator : AR\AJ
 Sample : PB153017BS
 Misc :
 ALS Vial : 12 Sample Multiplier: 1

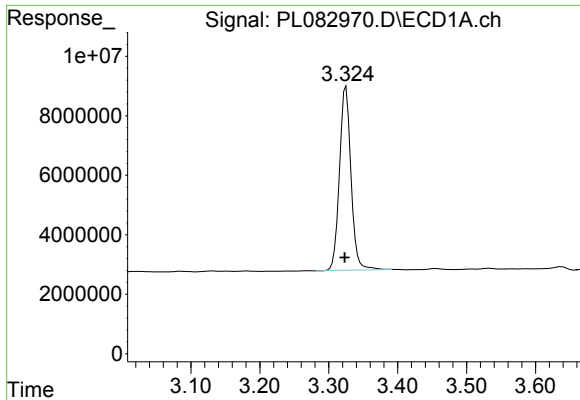
Instrument :
 ECD_L
ClientSampleId :
 PB153017BS

Manual Integrations
APPROVED
 Reviewed By :Abdul Mirza 05/25/2023
 Supervised By :Ankita Jodhani 05/26/2023

Integration File signal 1: autoint1.e
 Integration File signal 2: autoint2.e
 Quant Time: May 25 05:30:52 2023
 Quant Method : Z:\pestpcbsrv\HPCHEM1\ECD_L\methods\PL051923.M
 Quant Title : GC Extractables
 QLast Update : Sat May 20 04:58:53 2023
 Response via : Initial Calibration
 Integrator: ChemStation

Volume Inj. : 1 µl
 Signal #1 Phase : ZB-MR2 Signal #2 Phase: ZB-MR1
 Signal #1 Info : 30M x 0.32mm x0.2 Signal #2 Info : 30M x 0.32mm x0.5µm





#1 Tetrachloro-m-xylene

R.T.: 3.325 min
 Delta R.T.: 0.002 min
 Response: 71743155
 Conc: 24.41 ng/ml

Instrument :

ECD_L

ClientSampleId :

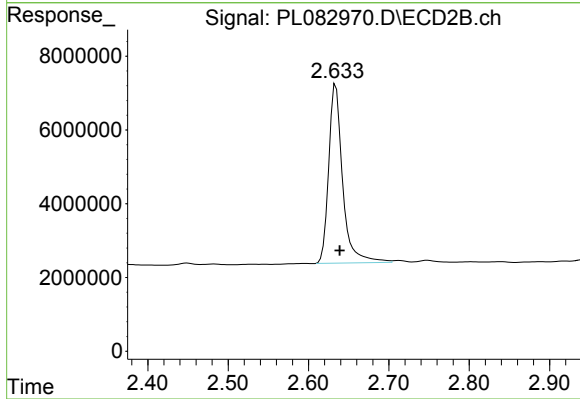
PB153017BS

Manual Integrations

APPROVED

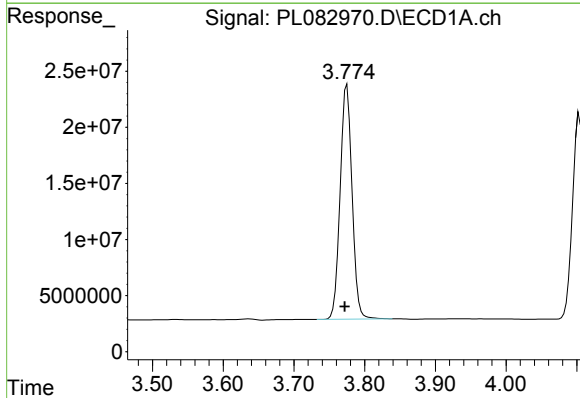
Reviewed By :Abdul Mirza 05/25/2023

Supervised By :Ankita Jodhani 05/26/2023



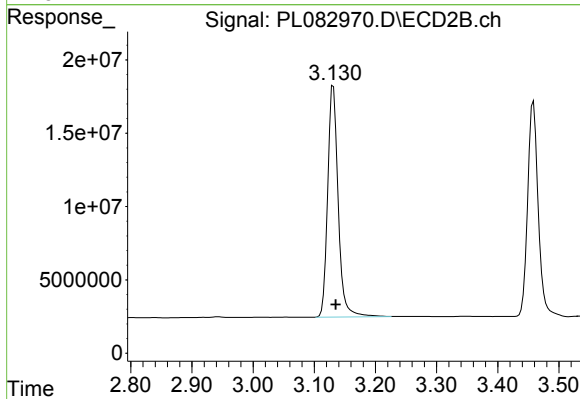
#1 Tetrachloro-m-xylene

R.T.: 2.634 min
 Delta R.T.: -0.005 min
 Response: 58578841
 Conc: 22.56 ng/ml



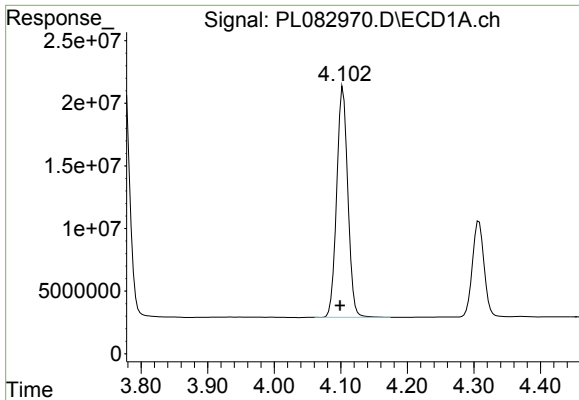
#2 alpha-BHC

R.T.: 3.775 min
 Delta R.T.: 0.003 min
 Response: 244346393
 Conc: 55.04 ng/ml



#2 alpha-BHC

R.T.: 3.131 min
 Delta R.T.: -0.004 min
 Response: 188366129
 Conc: 50.48 ng/ml



#3 gamma-BHC (Lindane)
 R.T.: 4.103 min
 Delta R.T.: 0.004 min
 Response: 213576561
 Conc: 51.55 ng/ml

Instrument :

ECD_L

Client Sample Id :

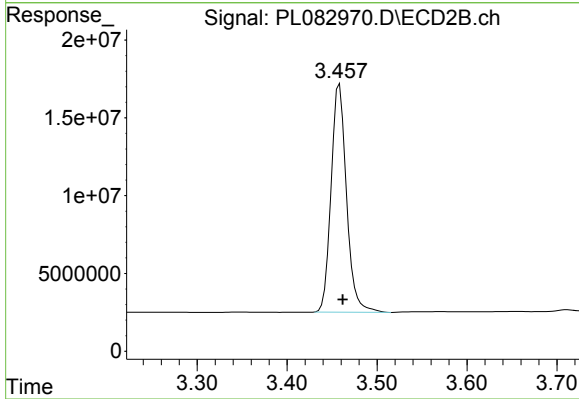
PB153017BS

Manual Integrations

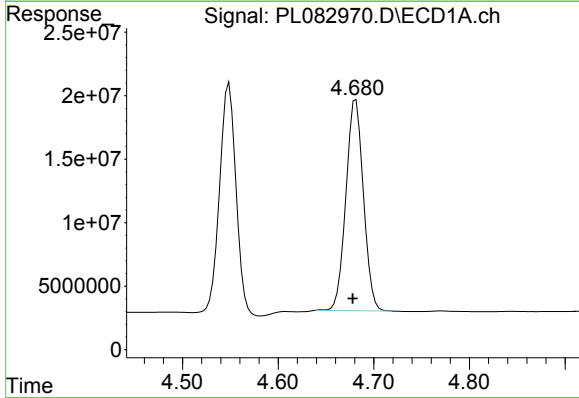
APPROVED

Reviewed By :Abdul Mirza 05/25/2023

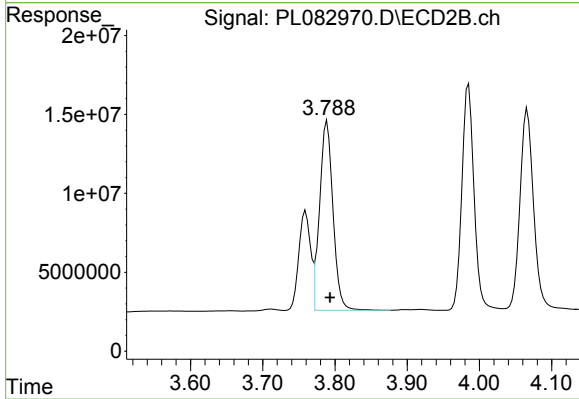
Supervised By :Ankita Jodhani 05/26/2023



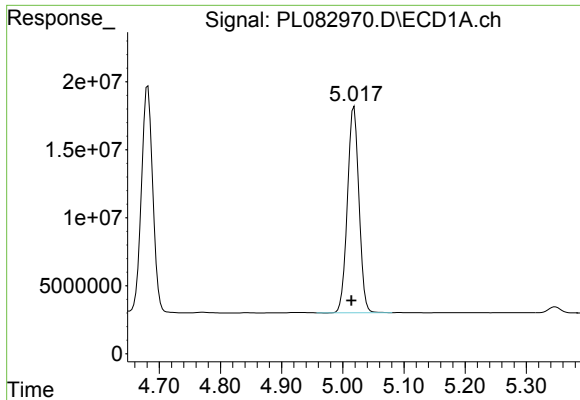
#3 gamma-BHC (Lindane)
 R.T.: 3.458 min
 Delta R.T.: -0.004 min
 Response: 175031134
 Conc: 52.51 ng/ml



#4 Heptachlor
 R.T.: 4.681 min
 Delta R.T.: 0.003 min
 Response: 212337118
 Conc: 55.55 ng/ml



#4 Heptachlor
 R.T.: 3.789 min
 Delta R.T.: -0.004 min
 Response: 155008038
 Conc: 42.34 ng/ml

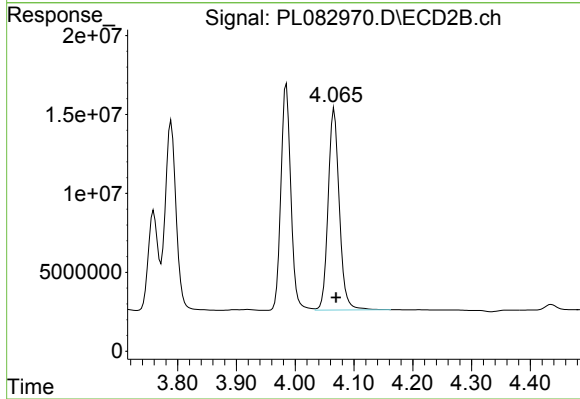


#5 Aldrin
 R.T.: 5.018 min
 Delta R.T.: 0.004 min
 Response: 198378125
 Conc: 56.39 ng/ml

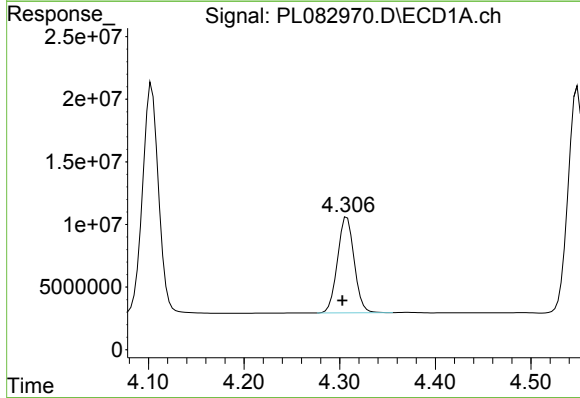
Instrument :
 ECD_L
 ClientSampleId :
 PB153017BS

Manual Integrations
 APPROVED

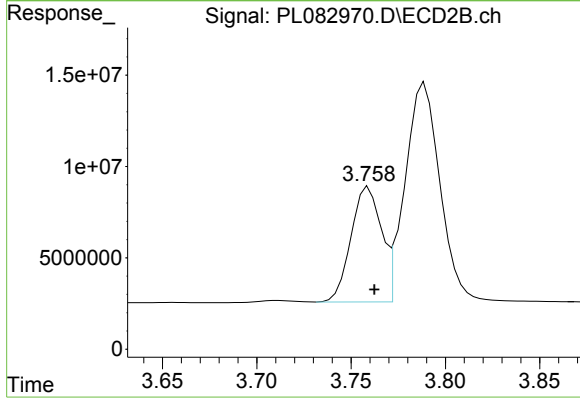
Reviewed By :Abdul Mirza 05/25/2023
 Supervised By :Ankita Jodhani 05/26/2023



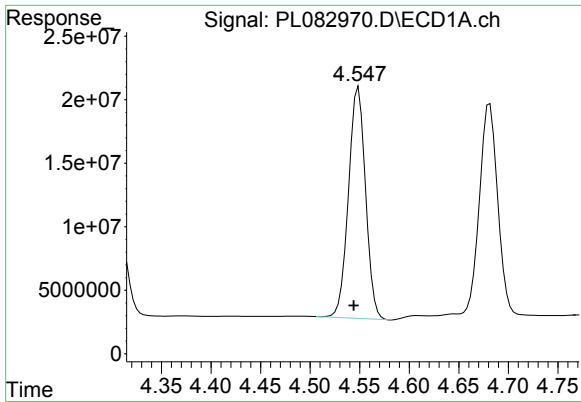
#5 Aldrin
 R.T.: 4.066 min
 Delta R.T.: -0.003 min
 Response: 168341120
 Conc: 51.74 ng/ml



#6 beta-BHC
 R.T.: 4.308 min
 Delta R.T.: 0.005 min
 Response: 92788832
 Conc: 49.28 ng/ml



#6 beta-BHC
 R.T.: 3.759 min
 Delta R.T.: -0.003 min
 Response: 70512450
 Conc: 49.31 ng/ml



#7 delta-BHC

R.T.: 4.549 min
 Delta R.T.: 0.005 min
 Response: 218378264
 Conc: 63.50 ng/ml

Instrument :

ECD_L

Client Sample Id :

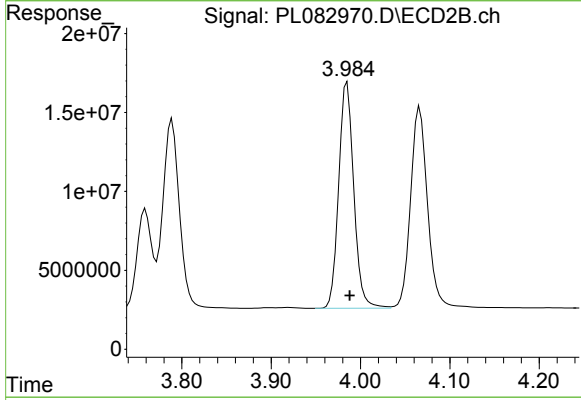
PB153017BS

Manual Integrations

APPROVED

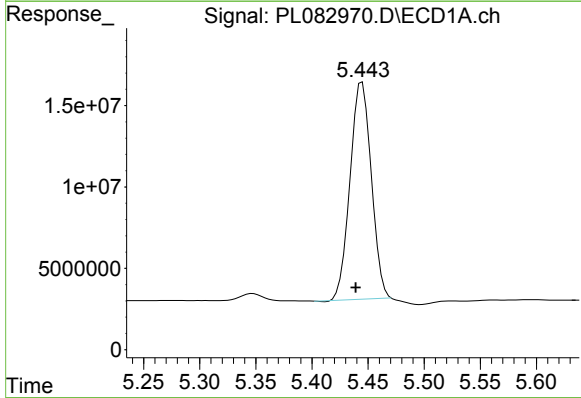
Reviewed By :Abdul Mirza 05/25/2023

Supervised By :Ankita Jodhani 05/26/2023



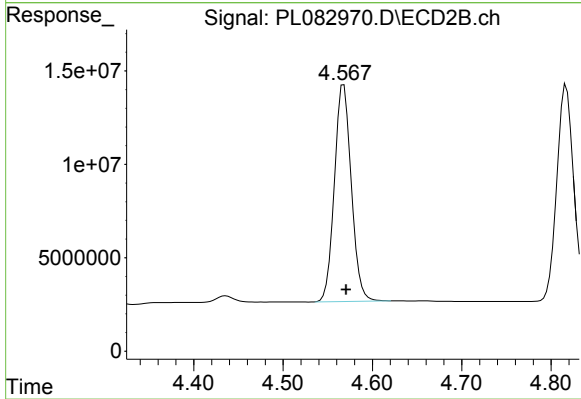
#7 delta-BHC

R.T.: 3.985 min
 Delta R.T.: -0.003 min
 Response: 167889325
 Conc: 51.24 ng/ml



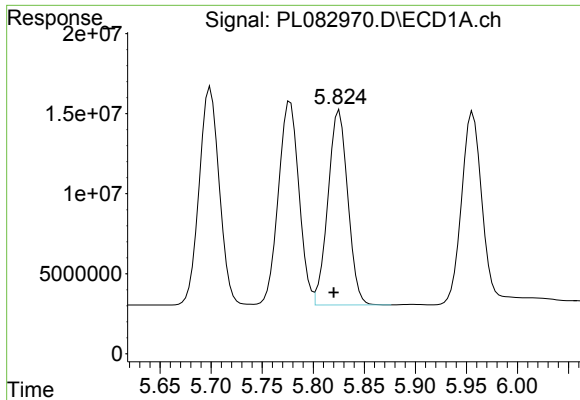
#8 Heptachlor epoxide

R.T.: 5.445 min
 Delta R.T.: 0.006 min
 Response: 175385719
 Conc: 54.83 ng/ml



#8 Heptachlor epoxide

R.T.: 4.568 min
 Delta R.T.: -0.002 min
 Response: 152377816
 Conc: 51.34 ng/ml



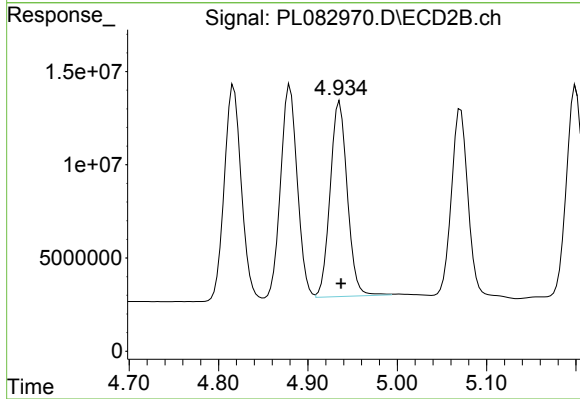
#9 Endosulfan I

R.T.: 5.825 min
 Delta R.T.: 0.005 min
 Response: 164757174
 Conc: 54.91 ng/ml

Instrument :
 ECD_L
 ClientSampleId :
 PB153017BS

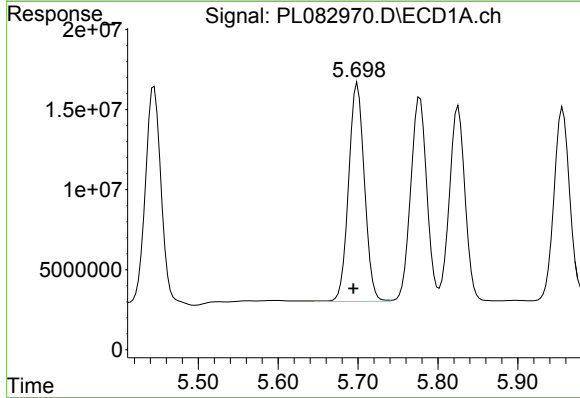
Manual Integrations
 APPROVED

Reviewed By :Abdul Mirza 05/25/2023
 Supervised By :Ankita Jodhani 05/26/2023



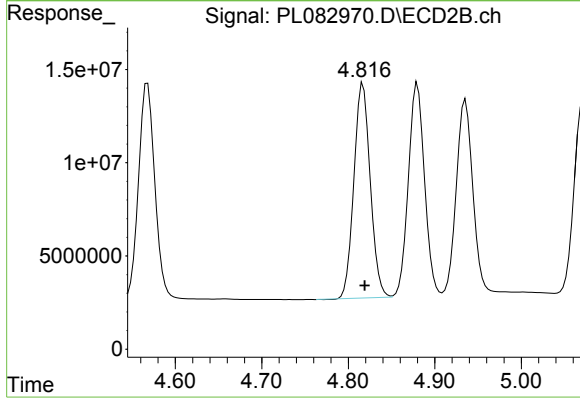
#9 Endosulfan I

R.T.: 4.936 min
 Delta R.T.: -0.002 min
 Response: 139658953
 Conc: 49.98 ng/ml



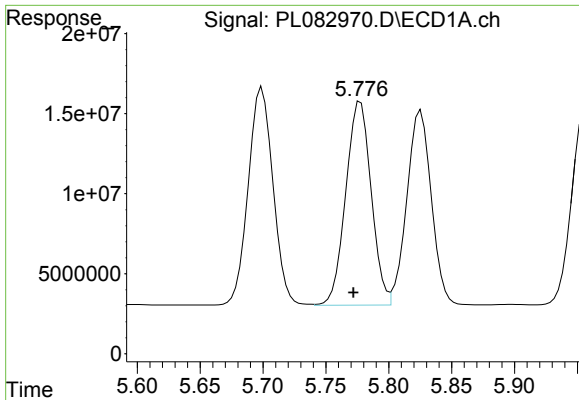
#10 gamma-Chlordane

R.T.: 5.699 min
 Delta R.T.: 0.005 min
 Response: 187806887
 Conc: 59.12 ng/ml



#10 gamma-Chlordane

R.T.: 4.817 min
 Delta R.T.: -0.002 min
 Response: 151058688
 Conc: 50.30 ng/ml



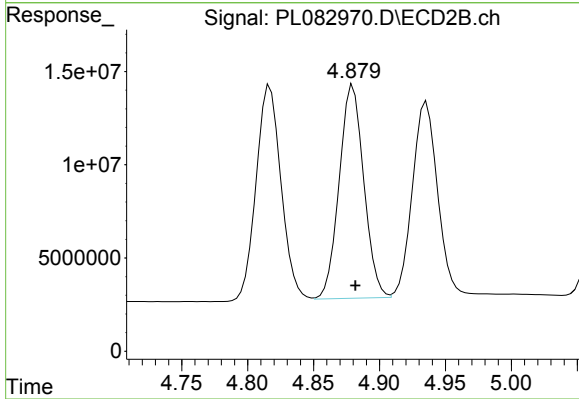
#11 alpha-Chlordane

R.T.: 5.778 min
 Delta R.T.: 0.006 min
 Response: 179001023
 Conc: 55.78 ng/ml

Instrument :
 ECD_L
 ClientSampleId :
 PB153017BS

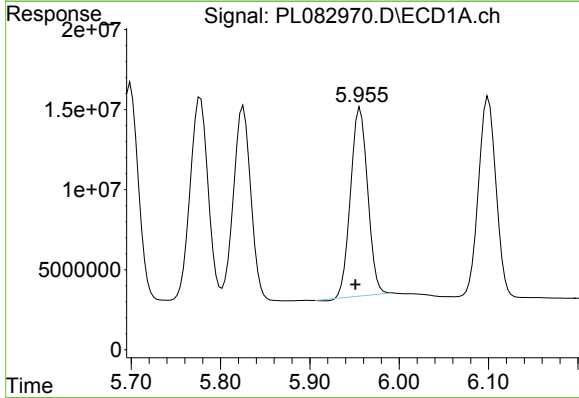
Manual Integrations
 APPROVED

Reviewed By :Abdul Mirza 05/25/2023
 Supervised By :Ankita Jodhani 05/26/2023



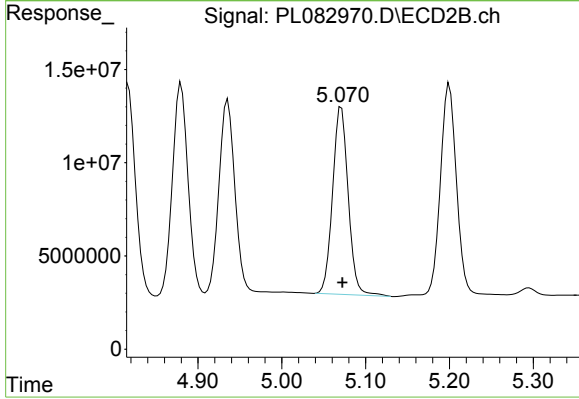
#11 alpha-Chlordane

R.T.: 4.880 min
 Delta R.T.: -0.002 min
 Response: 148218064
 Conc: 49.37 ng/ml



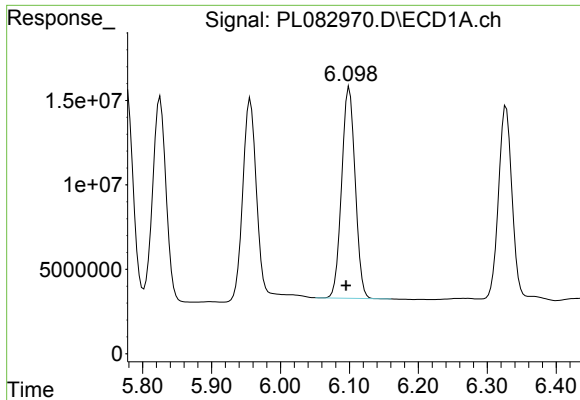
#12 4,4'-DDE

R.T.: 5.956 min
 Delta R.T.: 0.005 min
 Response: 156793981
 Conc: 56.88 ng/ml



#12 4,4'-DDE

R.T.: 5.071 min
 Delta R.T.: -0.001 min
 Response: 130069138
 Conc: 53.55 ng/ml



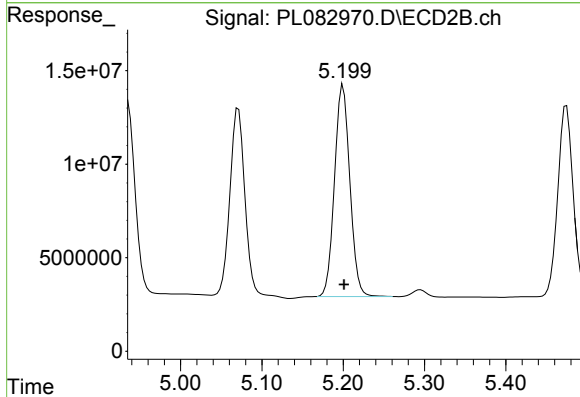
#13 Dieldrin

R.T.: 6.100 min
 Delta R.T.: 0.005 min
 Response: 170301400
 Conc: 56.62 ng/ml

Instrument :
 ECD_L
 ClientSampleId :
 PB153017BS

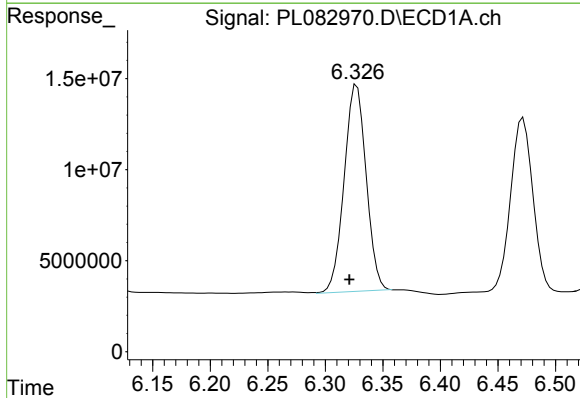
Manual Integrations
 APPROVED

Reviewed By :Abdul Mirza 05/25/2023
 Supervised By :Ankita Jodhani 05/26/2023



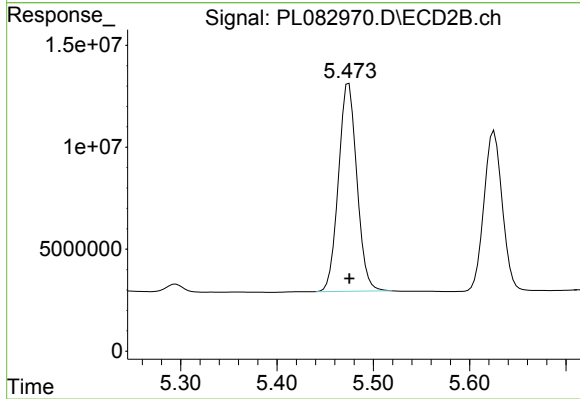
#13 Dieldrin

R.T.: 5.200 min
 Delta R.T.: -0.001 min
 Response: 148630221
 Conc: 52.65 ng/ml



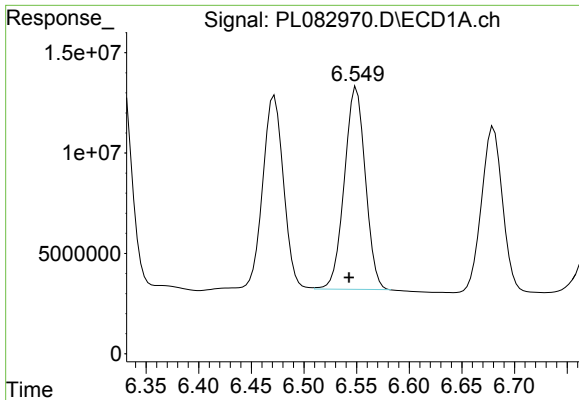
#14 Endrin

R.T.: 6.326 min
 Delta R.T.: 0.005 min
 Response: 151739568
 Conc: 56.47 ng/ml m



#14 Endrin

R.T.: 5.475 min
 Delta R.T.: 0.000 min
 Response: 135345243
 Conc: 53.35 ng/ml



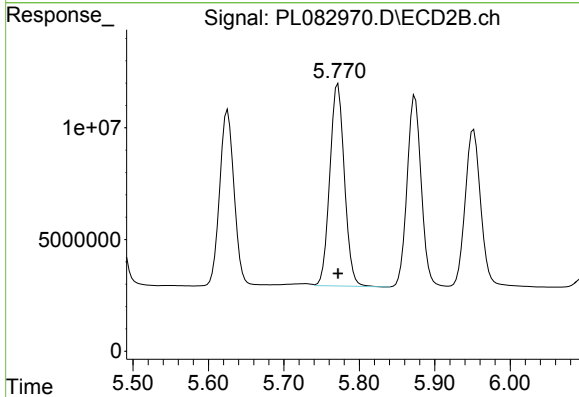
#15 Endosulfan II

R.T.: 6.550 min
 Delta R.T.: 0.007 min
 Response: 140336587
 Conc: 53.36 ng/ml

Instrument :
 ECD_L
 ClientSampleId :
 PB153017BS

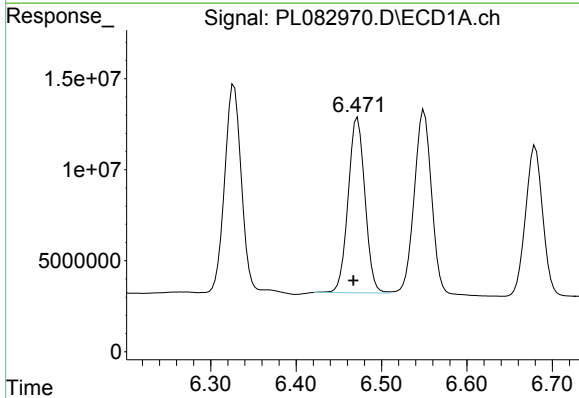
Manual Integrations
 APPROVED

Reviewed By :Abdul Mirza 05/25/2023
 Supervised By :Ankita Jodhani 05/26/2023



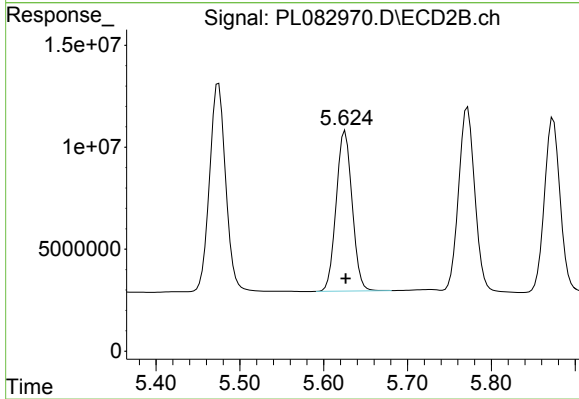
#15 Endosulfan II

R.T.: 5.772 min
 Delta R.T.: 0.000 min
 Response: 121791558
 Conc: 49.22 ng/ml



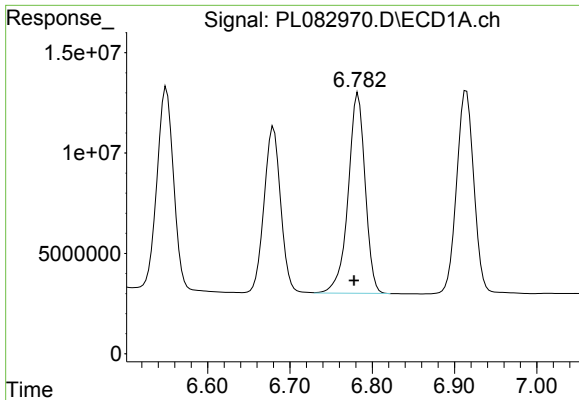
#16 4,4'-DDD

R.T.: 6.472 min
 Delta R.T.: 0.005 min
 Response: 131794440
 Conc: 60.65 ng/ml



#16 4,4'-DDD

R.T.: 5.626 min
 Delta R.T.: 0.000 min
 Response: 103743926
 Conc: 53.94 ng/ml



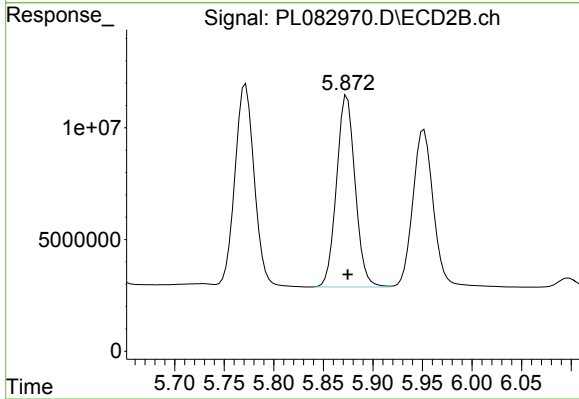
#17 4,4'-DDT

R.T.: 6.783 min
 Delta R.T.: 0.005 min
 Response: 143020931
 Conc: 57.14 ng/ml

Instrument :
 ECD_L
 ClientSampleId :
 PB153017BS

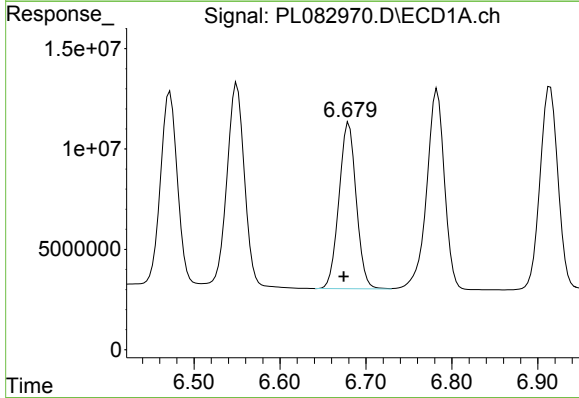
Manual Integrations
 APPROVED

Reviewed By :Abdul Mirza 05/25/2023
 Supervised By :Ankita Jodhani 05/26/2023



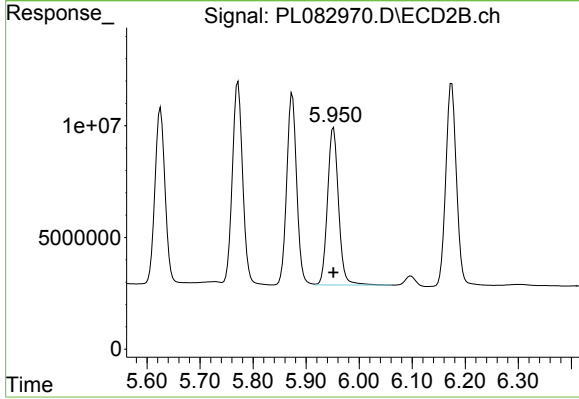
#17 4,4'-DDT

R.T.: 5.874 min
 Delta R.T.: 0.000 min
 Response: 111963476
 Conc: 50.18 ng/ml



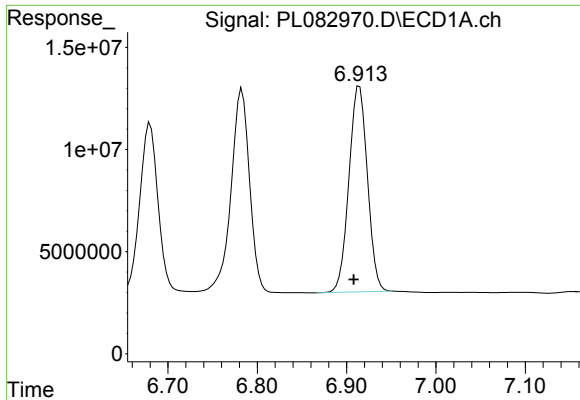
#18 Endrin aldehyde

R.T.: 6.680 min
 Delta R.T.: 0.006 min
 Response: 115851708
 Conc: 57.62 ng/ml



#18 Endrin aldehyde

R.T.: 5.952 min
 Delta R.T.: 0.000 min
 Response: 102060176
 Conc: 51.61 ng/ml

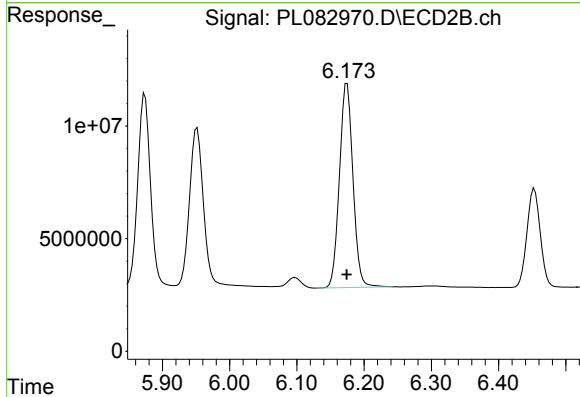


#19 Endosulfan Sulfate
 R.T.: 6.914 min
 Delta R.T.: 0.006 min
 Response: 145045332
 Conc: 56.58 ng/ml

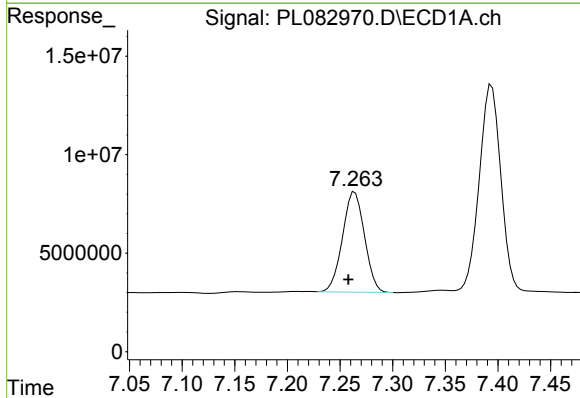
Instrument :
 ECD_L
 ClientSampleId :
 PB153017BS

Manual Integrations
 APPROVED

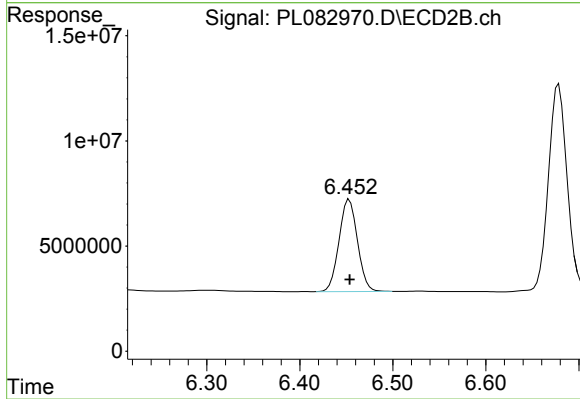
Reviewed By :Abdul Mirza 05/25/2023
 Supervised By :Ankita Jodhani 05/26/2023



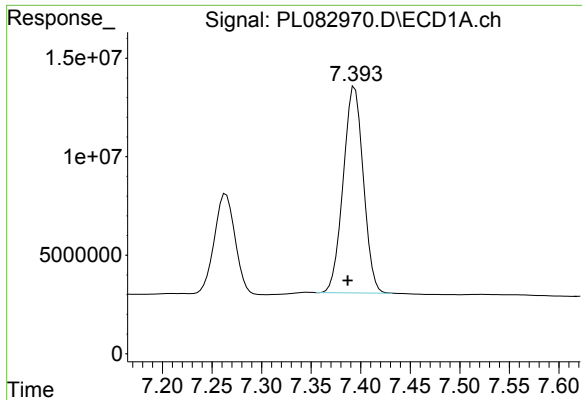
#19 Endosulfan Sulfate
 R.T.: 6.174 min
 Delta R.T.: 0.000 min
 Response: 126025647
 Conc: 51.46 ng/ml



#20 Methoxychlor
 R.T.: 7.264 min
 Delta R.T.: 0.006 min
 Response: 74131800
 Conc: 56.06 ng/ml



#20 Methoxychlor
 R.T.: 6.453 min
 Delta R.T.: 0.000 min
 Response: 60441573
 Conc: 47.53 ng/ml



#21 Endrin ketone

R.T.: 7.393 min
 Delta R.T.: 0.006 min
 Response: 148072477
 Conc: 58.05 ng/ml

Instrument :

ECD_L

ClientSampleId :

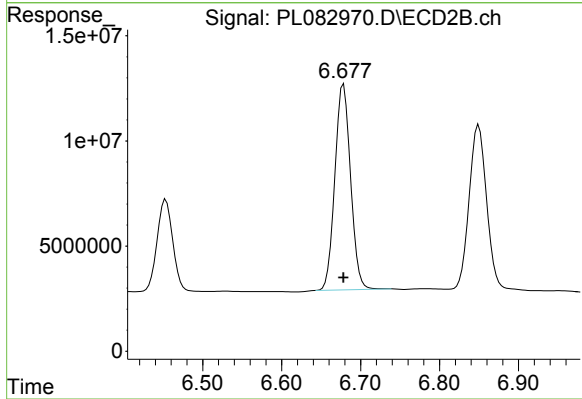
PB153017BS

Manual Integrations

APPROVED

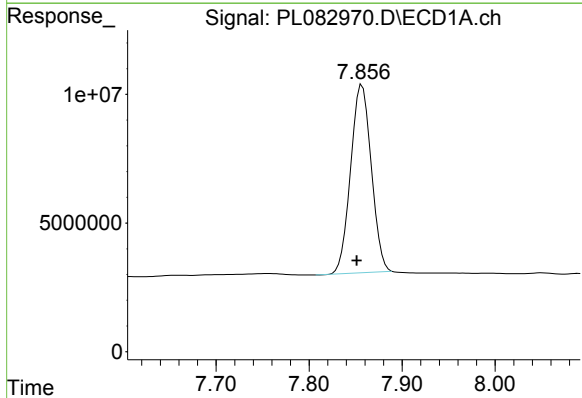
Reviewed By :Abdul Mirza 05/25/2023

Supervised By :Ankita Jodhani 05/26/2023



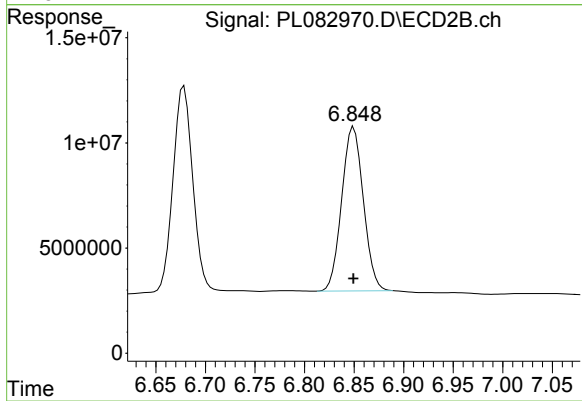
#21 Endrin ketone

R.T.: 6.678 min
 Delta R.T.: 0.000 min
 Response: 135250221
 Conc: 50.02 ng/ml



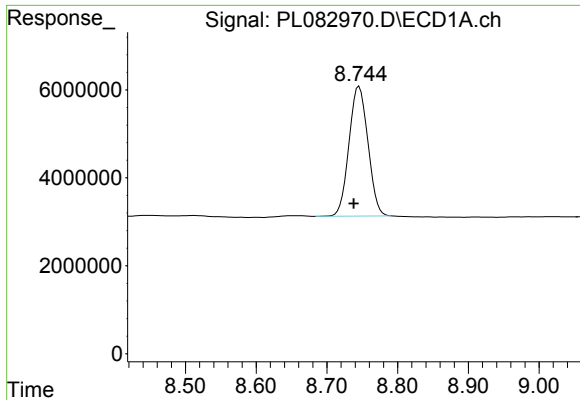
#22 Mirex

R.T.: 7.857 min
 Delta R.T.: 0.006 min
 Response: 113006409
 Conc: 53.91 ng/ml



#22 Mirex

R.T.: 6.850 min
 Delta R.T.: 0.000 min
 Response: 118661395
 Conc: 50.71 ng/ml



#28 Decachlorobiphenyl

R.T.: 8.745 min
Delta R.T.: 0.007 min
Response: 54976043
Conc: 26.21 ng/ml

Instrument :

ECD_L

ClientSampleId :

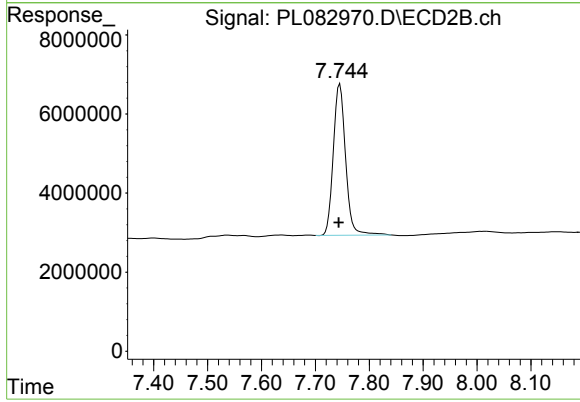
PB153017BS

Manual Integrations

APPROVED

Reviewed By :Abdul Mirza 05/25/2023

Supervised By :Ankita Jodhani 05/26/2023



#28 Decachlorobiphenyl

R.T.: 7.745 min
Delta R.T.: 0.002 min
Response: 60829085
Conc: 24.46 ng/ml