

Data Path : Z:\pestpcbsrv\HPCHEM1\ECD_L\Data\PL052522\
 Data File : PL075010.D
 Signal(s) : Signal #1: ECD1A.ch Signal #2: ECD2B.ch
 Acq On : 25 May 2022 09:40
 Operator : AR\AJ
 Sample : PEM
 Misc :
 ALS Vial : 3 Sample Multiplier: 1

Instrument :
 ECD_L
 ClientSampleId :

Integration File signal 1: autoint1.e
 Integration File signal 2: autoint2.e
 Quant Time: May 26 01:07:37 2022
 Quant Method : Z:\pestpcbsrv\HPCHEM1\ECD_L\methods\PL051122.M
 Quant Title : GC Extractables
 QLast Update : Sat May 14 02:37:15 2022
 Response via : Initial Calibration
 Integrator: ChemStation

Volume Inj. : 1 µl
 Signal #1 Phase : ZB-MR2 Signal #2 Phase: ZB-MR1
 Signal #1 Info : 30M x 0.32mm x0.2 Signal #2 Info : 30M x 0.32mm x0.5µm

Compound	RT#1	RT#2	Resp#1	Resp#2	ng/ml	ng/ml

System Monitoring Compounds						
1) SA Tetrachlo...	5.643	4.646	12975723	33991660	25.556	24.766
2) SA Decachlor...	11.635f	10.393	11965367	26863246	26.793	26.172
Target Compounds						
2) A alpha-BHC	6.226	5.348	8046338	19278789	11.761	11.456
3) MA gamma-BHC...	6.625	5.768	7827538	20016331	12.126	12.114
4) MA Heptachlor	7.308f	0.000	231418	0	0.359	N.D. #
5) MB Aldrin	0.000	6.526	0	176033	N.D.	0.117 #
6) B beta-BHC	6.876	6.146	3941783	10836953	13.207	13.649
7) B delta-BHC	0.000	6.418	0	269270	N.D.	0.172 #
8) B Heptachlo...	8.124	0.000	355950	0	0.626	N.D. #
10) B gamma-Chl...	8.386	0.000	462054	0	0.893	N.D. #
12) B 4,4'-DDE	0.000	7.633	0	137126	N.D.	0.117 #
13) MA Dieldrin	0.000	7.763	0	549926	N.D.	0.432 #
14) MA Endrin	9.059	8.053	25919670	71712901	62.811	67.890
15) B Endosulfa...	9.302	8.388	349510	315801	0.795	0.280 #
16) A 4,4'-DDD	9.199	8.216	2624173	6983370	5.804	7.089
17) MA 4,4'-DDT	9.519	8.478	52907182	127.4E6	115.108	127.340
18) B Endrin al...	9.429	8.552	527460	976345	1.490	1.222
20) A Methoxychlor	10.004	9.071	68453306	179.1E6	279.501	306.409
21) B Endrin ke...	10.169	9.297	2002032	3330208	3.904	2.987
22) Mirex	0.000	9.505	0	269341	N.D.	0.278 #
25) Chlordane-3	8.386	7.333f	462054	231769	6.749	1.786 #

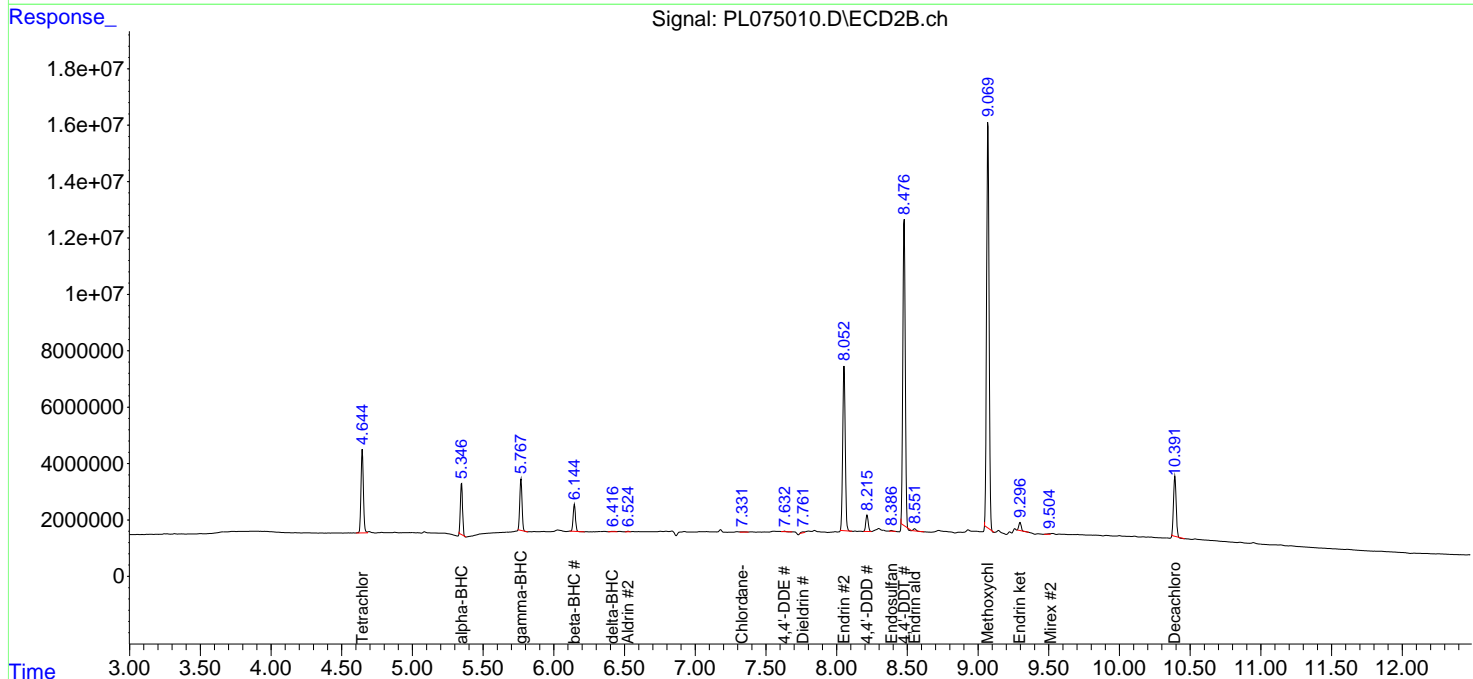
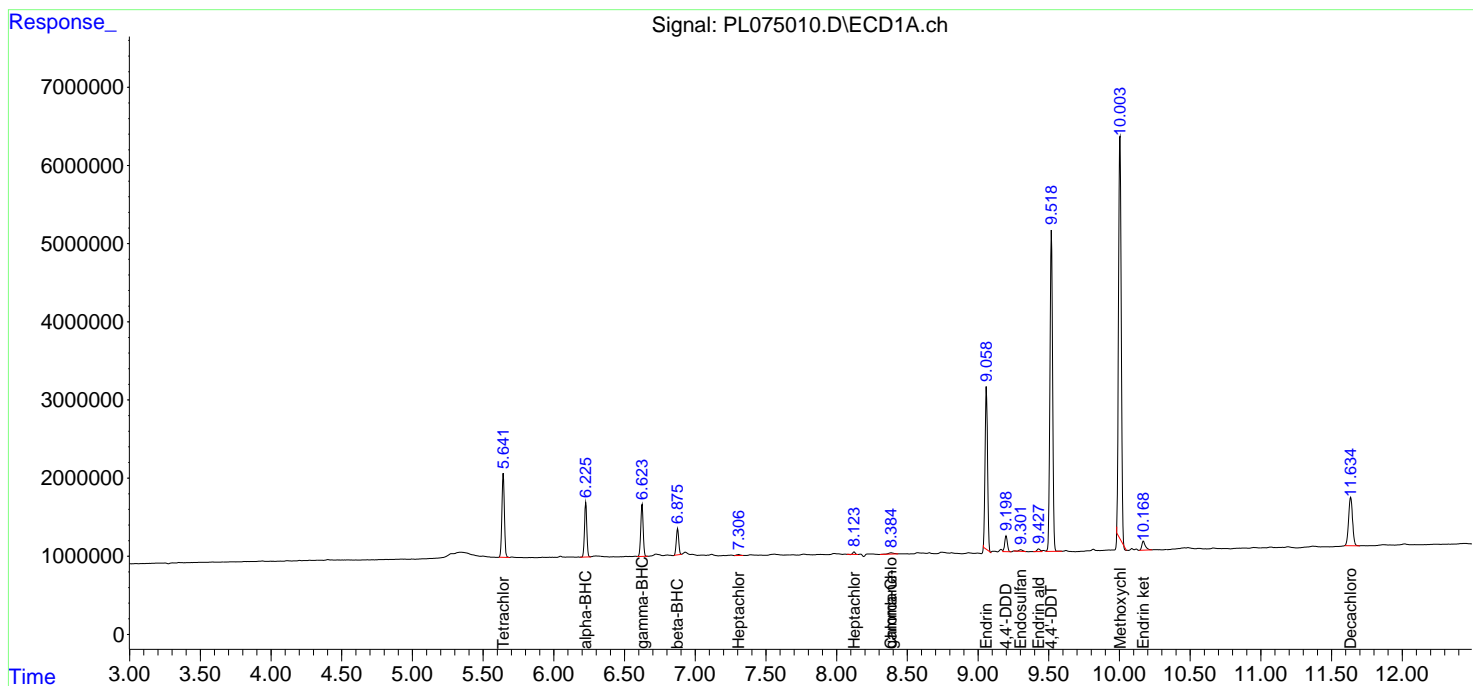
(f)=RT Delta > 1/2 Window (#)=Amounts differ by > 25% (m)=manual int.

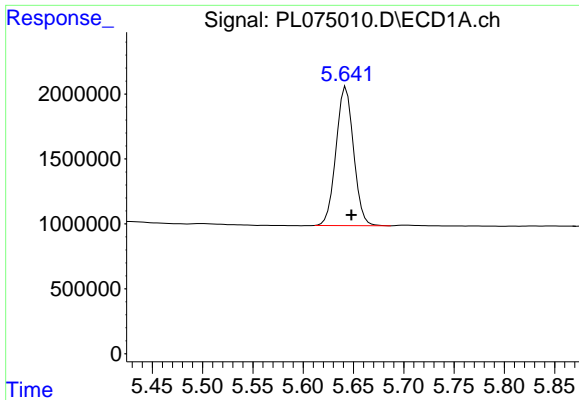
Data Path : Z:\pestpcbsrv\HPCHEM1\ECD_L\Data\PL052522\
 Data File : PL075010.D
 Signal(s) : Signal #1: ECD1A.ch Signal #2: ECD2B.ch
 Acq On : 25 May 2022 09:40
 Operator : AR\AJ
 Sample : PEM
 Misc :
 ALS Vial : 3 Sample Multiplier: 1

Instrument :
 ECD_L
 ClientSampleId :

Integration File signal 1: autoint1.e
 Integration File signal 2: autoint2.e
 Quant Time: May 26 01:07:37 2022
 Quant Method : Z:\pestpcbsrv\HPCHEM1\ECD_L\methods\PL051122.M
 Quant Title : GC Extractables
 QLast Update : Sat May 14 02:37:15 2022
 Response via : Initial Calibration
 Integrator: ChemStation

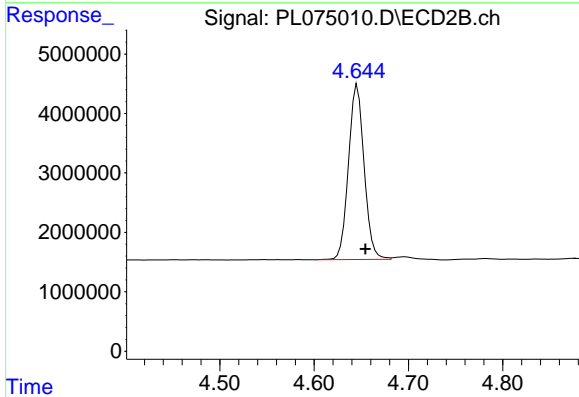
Volume Inj. : 1 µl
 Signal #1 Phase : ZB-MR2 Signal #2 Phase: ZB-MR1
 Signal #1 Info : 30M x 0.32mm x0.2 Signal #2 Info : 30M x 0.32mm x0.5µm



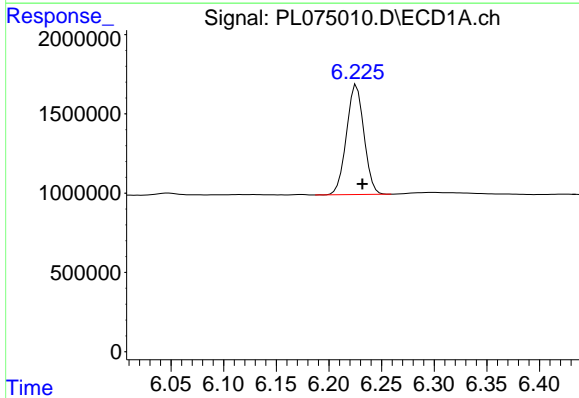


#1 Tetrachloro-m-xylene
 R.T.: 5.643 min
 Delta R.T.: -0.005 min
 Response: 12975723
 Conc: 25.56 ng/ml

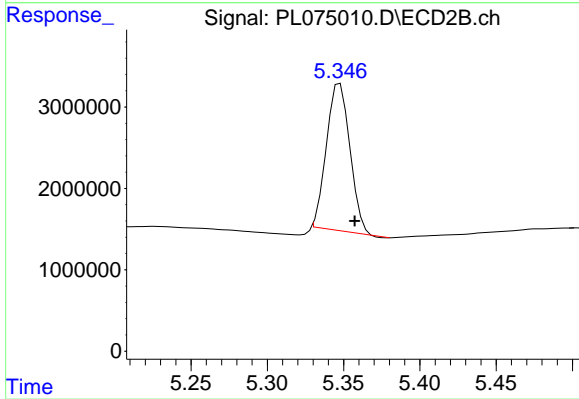
Instrument :
 ECD_L
 ClientSampleId :



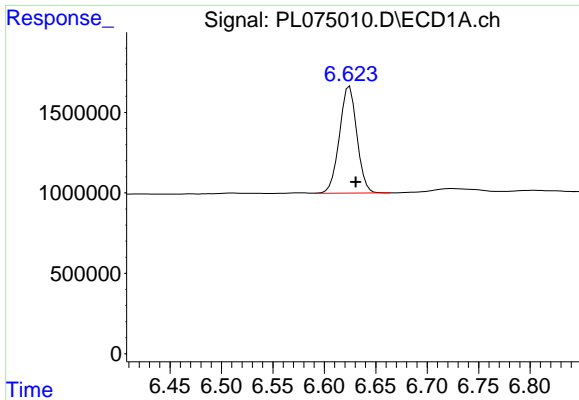
#1 Tetrachloro-m-xylene
 R.T.: 4.646 min
 Delta R.T.: -0.009 min
 Response: 33991660
 Conc: 24.77 ng/ml



#2 alpha-BHC
 R.T.: 6.226 min
 Delta R.T.: -0.006 min
 Response: 8046338
 Conc: 11.76 ng/ml



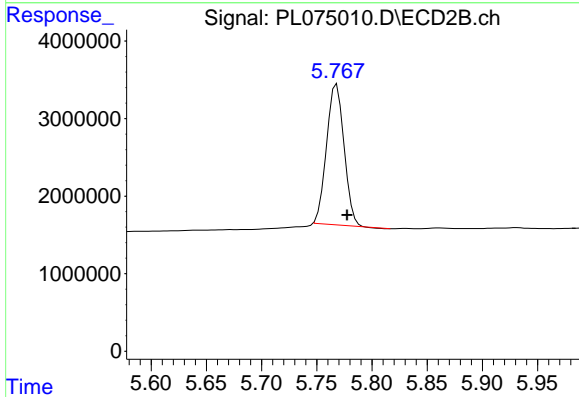
#2 alpha-BHC
 R.T.: 5.348 min
 Delta R.T.: -0.010 min
 Response: 19278789
 Conc: 11.46 ng/ml



#3 gamma-BHC (Lindane)

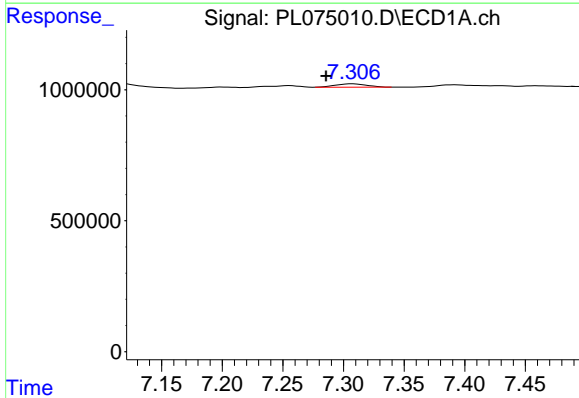
R.T.: 6.625 min
 Delta R.T.: -0.006 min
 Response: 7827538
 Conc: 12.13 ng/ml

Instrument :
 ECD_L
 ClientSampleId :



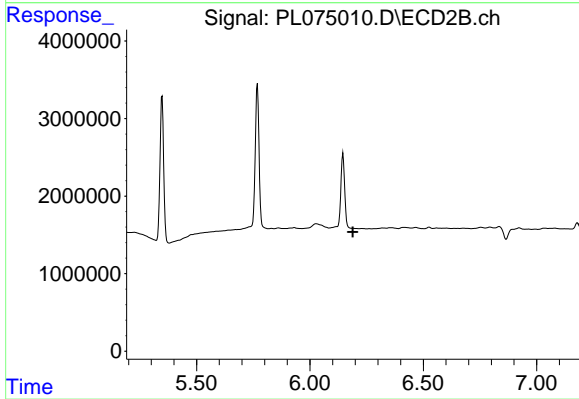
#3 gamma-BHC (Lindane)

R.T.: 5.768 min
 Delta R.T.: -0.009 min
 Response: 20016331
 Conc: 12.11 ng/ml



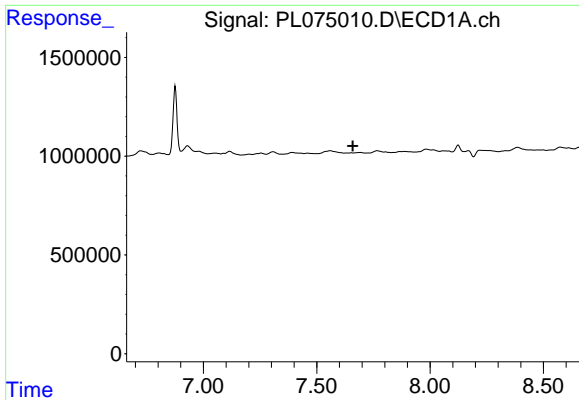
#4 Heptachlor

R.T.: 7.308 min
 Delta R.T.: 0.022 min
 Response: 231418
 Conc: 0.36 ng/ml



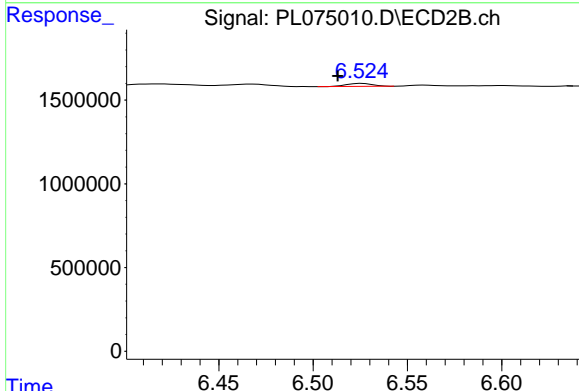
#4 Heptachlor

R.T.: 0.000 min
 Exp R.T. : 6.189 min
 Response: 0
 Conc: N.D.

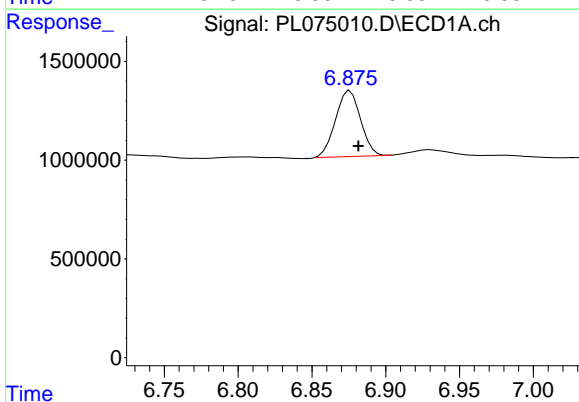


#5 Aldrin
 R.T.: 0.000 min
 Exp R.T.: 7.660 min
 Response: 0
 Conc: N.D.

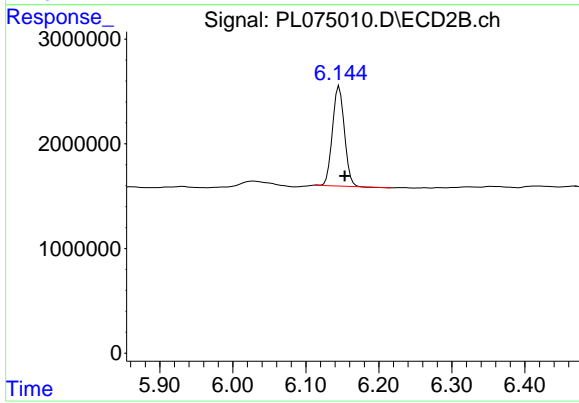
Instrument :
 ECD_L
 ClientSampleId :



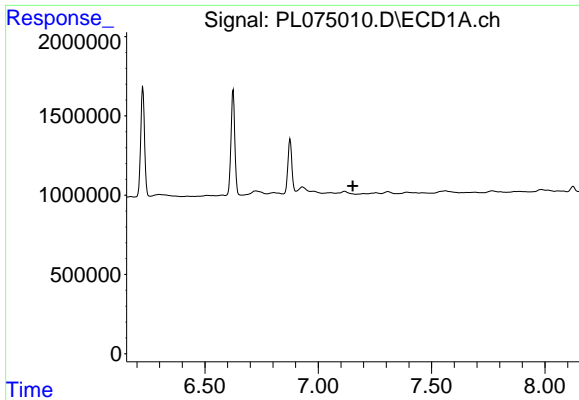
#5 Aldrin
 R.T.: 6.526 min
 Delta R.T.: 0.013 min
 Response: 176033
 Conc: 0.12 ng/ml



#6 beta-BHC
 R.T.: 6.876 min
 Delta R.T.: -0.006 min
 Response: 3941783
 Conc: 13.21 ng/ml



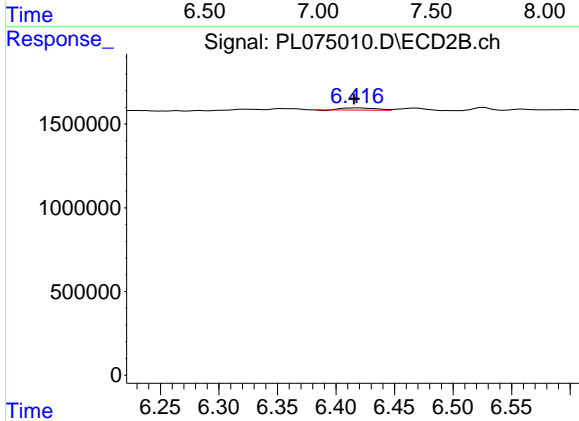
#6 beta-BHC
 R.T.: 6.146 min
 Delta R.T.: -0.008 min
 Response: 10836953
 Conc: 13.65 ng/ml



#7 delta-BHC

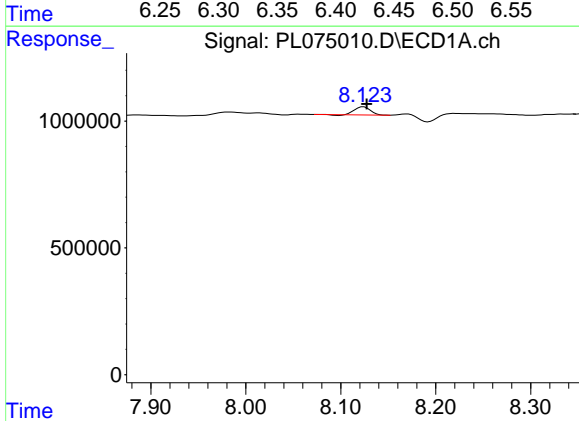
R.T.: 0.000 min
 Exp R.T.: 7.152 min
 Response: 0
 Conc: N.D.

Instrument :
 ECD_L
 ClientSampleId :



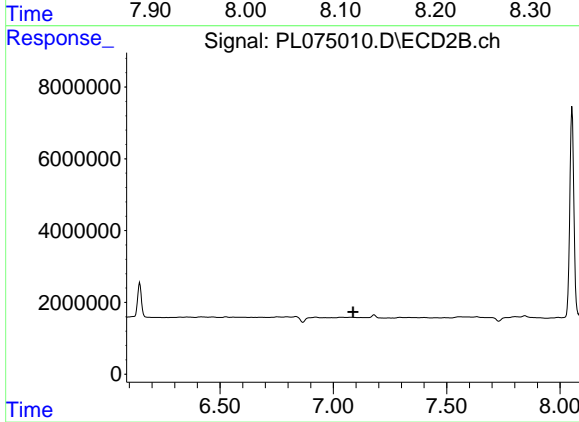
#7 delta-BHC

R.T.: 6.418 min
 Delta R.T.: 0.002 min
 Response: 269270
 Conc: 0.17 ng/ml



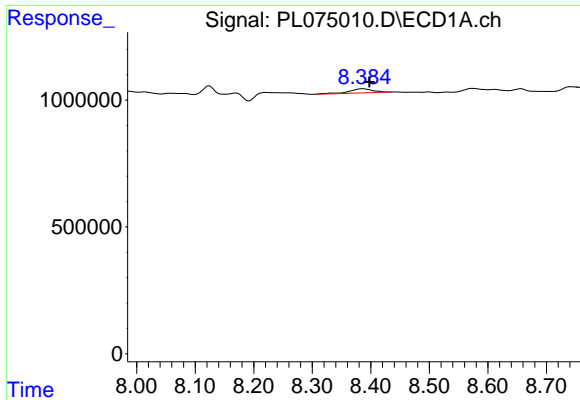
#8 Heptachlor epoxide

R.T.: 8.124 min
 Delta R.T.: -0.003 min
 Response: 355950
 Conc: 0.63 ng/ml



#8 Heptachlor epoxide

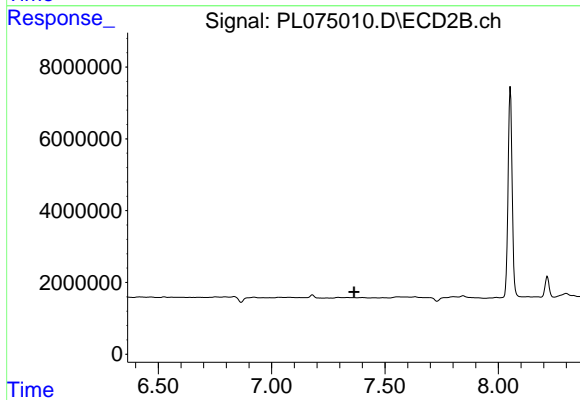
R.T.: 0.000 min
 Exp R.T.: 7.087 min
 Response: 0
 Conc: N.D.



#10 gamma-Chlordane

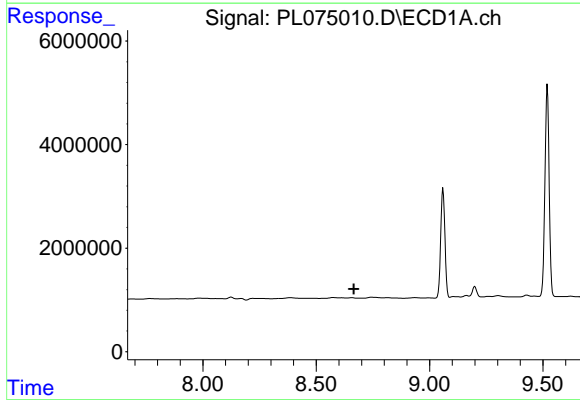
R.T.: 8.386 min
 Delta R.T.: -0.012 min
 Response: 462054
 Conc: 0.89 ng/ml

Instrument :
 ECD_L
 ClientSampleId :



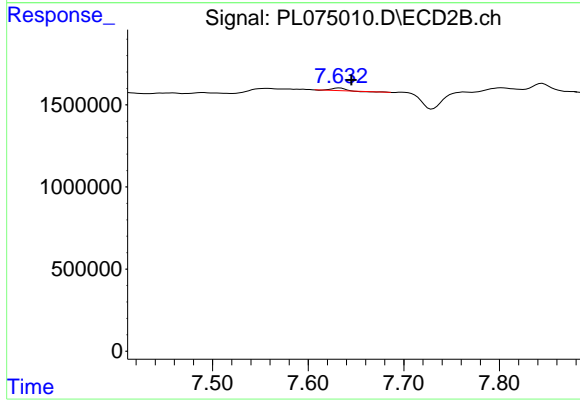
#10 gamma-Chlordane

R.T.: 0.000 min
 Exp R.T. : 7.363 min
 Response: 0
 Conc: N.D.



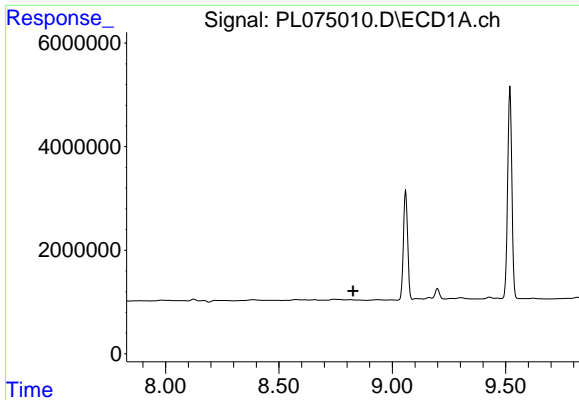
#12 4,4'-DDE

R.T.: 0.000 min
 Exp R.T. : 8.665 min
 Response: 0
 Conc: N.D.



#12 4,4'-DDE

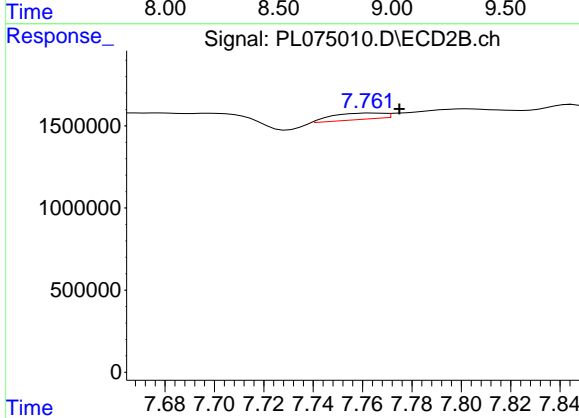
R.T.: 7.633 min
 Delta R.T.: -0.012 min
 Response: 137126
 Conc: 0.12 ng/ml



#13 Dieldrin

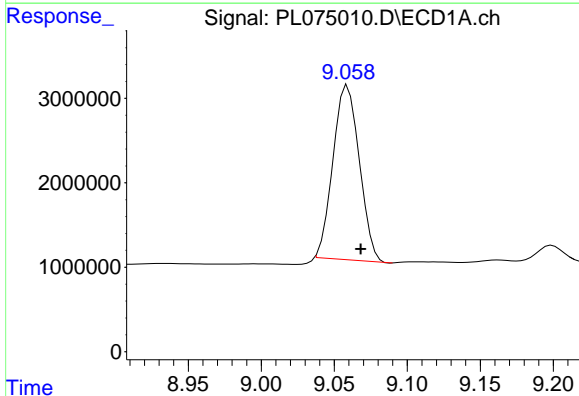
R.T.: 0.000 min
 Exp R.T.: 8.827 min
 Response: 0
 Conc: N.D.

Instrument :
 ECD_L
 ClientSampleId :



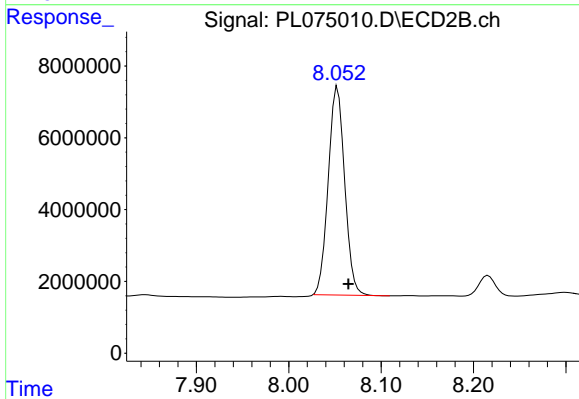
#13 Dieldrin

R.T.: 7.763 min
 Delta R.T.: -0.011 min
 Response: 549926
 Conc: 0.43 ng/ml



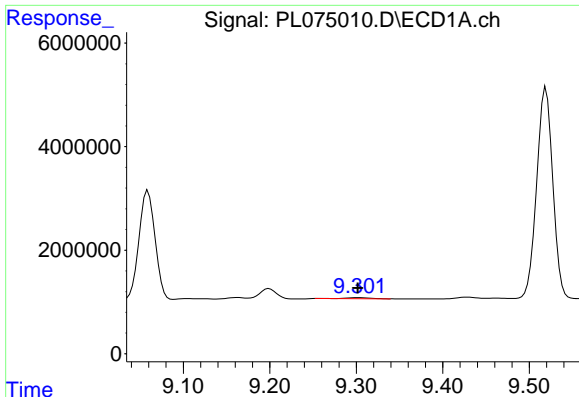
#14 Endrin

R.T.: 9.059 min
 Delta R.T.: -0.009 min
 Response: 25919670
 Conc: 62.81 ng/ml



#14 Endrin

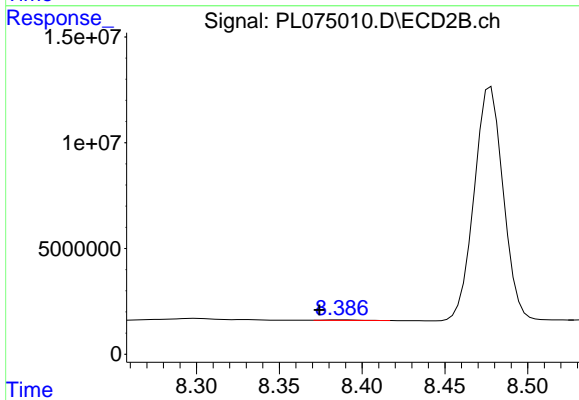
R.T.: 8.053 min
 Delta R.T.: -0.012 min
 Response: 71712901
 Conc: 67.89 ng/ml



#15 Endosulfan II

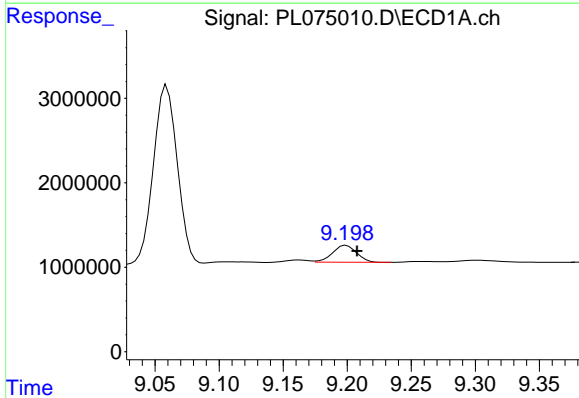
R.T.: 9.302 min
 Delta R.T.: 0.000 min
 Response: 349510
 Conc: 0.80 ng/ml

Instrument :
 ECD_L
 ClientSampleId :



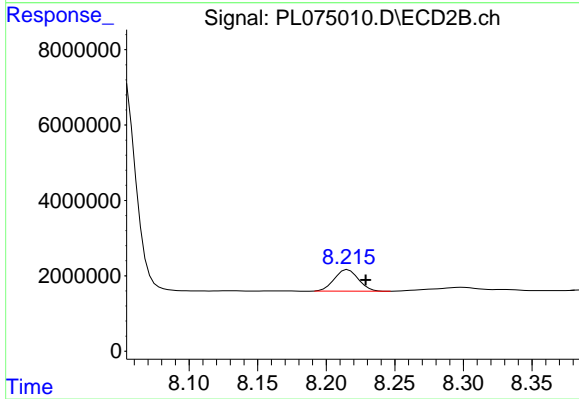
#15 Endosulfan II

R.T.: 8.388 min
 Delta R.T.: 0.013 min
 Response: 315801
 Conc: 0.28 ng/ml



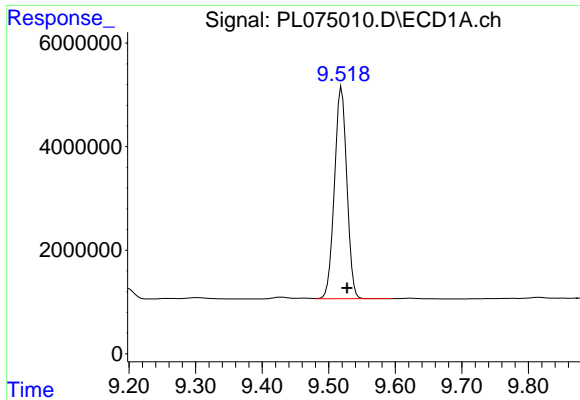
#16 4,4'-DDD

R.T.: 9.199 min
 Delta R.T.: -0.009 min
 Response: 2624173
 Conc: 5.80 ng/ml



#16 4,4'-DDD

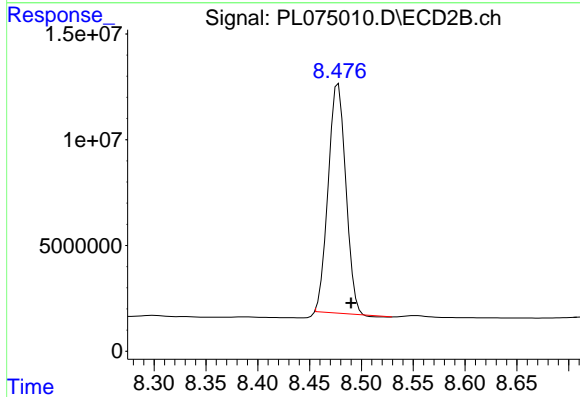
R.T.: 8.216 min
 Delta R.T.: -0.013 min
 Response: 6983370
 Conc: 7.09 ng/ml



#17 4,4'-DDT

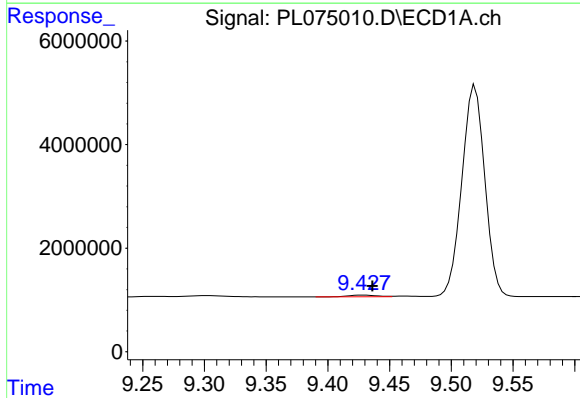
R.T.: 9.519 min
 Delta R.T.: -0.008 min
 Response: 52907182
 Conc: 115.11 ng/ml

Instrument :
 ECD_L
 ClientSampleId :



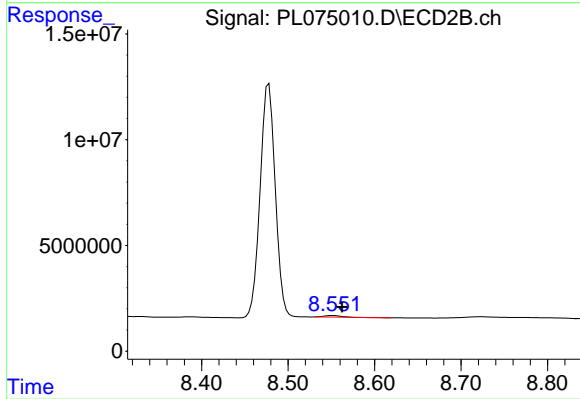
#17 4,4'-DDT

R.T.: 8.478 min
 Delta R.T.: -0.012 min
 Response: 127405279
 Conc: 127.34 ng/ml



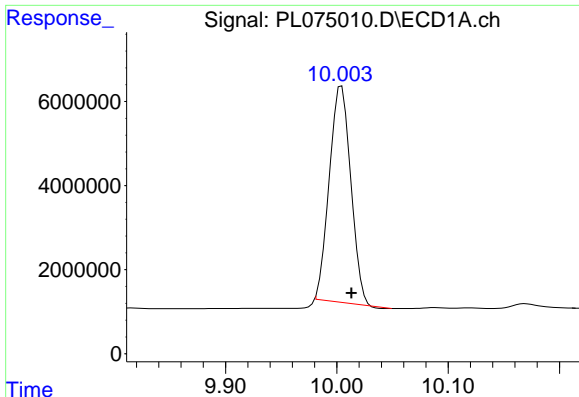
#18 Endrin aldehyde

R.T.: 9.429 min
 Delta R.T.: -0.007 min
 Response: 527460
 Conc: 1.49 ng/ml



#18 Endrin aldehyde

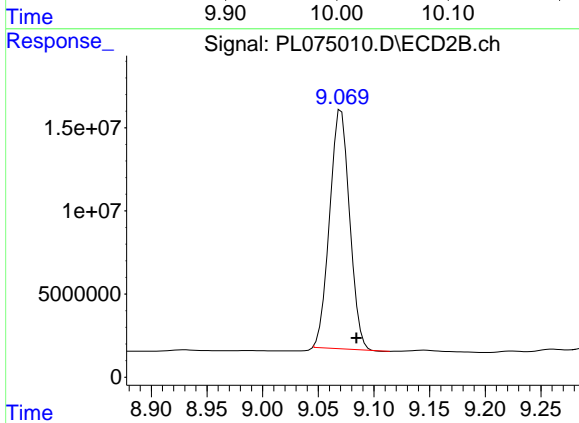
R.T.: 8.552 min
 Delta R.T.: -0.011 min
 Response: 976345
 Conc: 1.22 ng/ml



#20 Methoxychlor

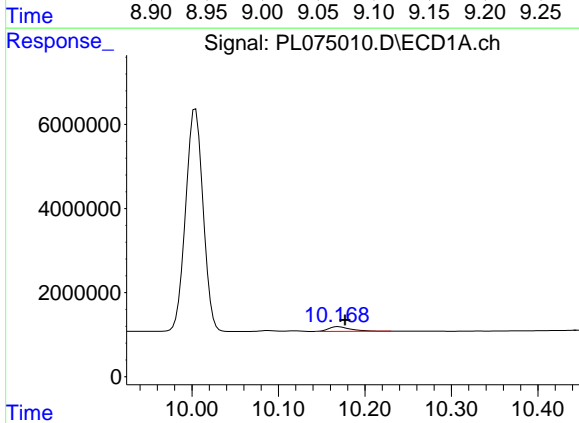
R.T.: 10.004 min
 Delta R.T.: -0.009 min
 Response: 68453306
 Conc: 279.50 ng/ml

Instrument :
 ECD_L
 ClientSampleId :



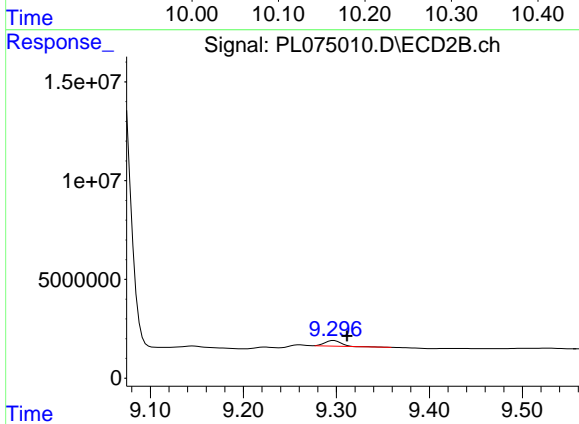
#20 Methoxychlor

R.T.: 9.071 min
 Delta R.T.: -0.014 min
 Response: 179062913
 Conc: 306.41 ng/ml



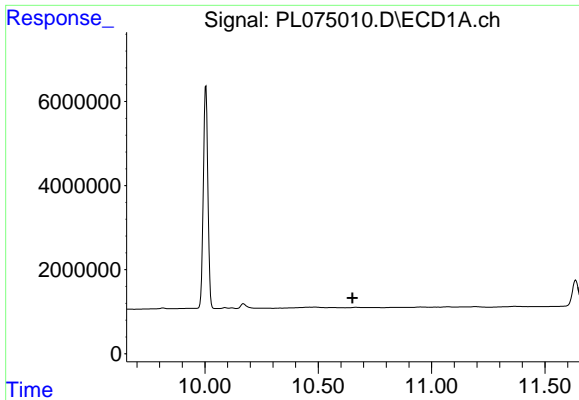
#21 Endrin ketone

R.T.: 10.169 min
 Delta R.T.: -0.008 min
 Response: 2002032
 Conc: 3.90 ng/ml



#21 Endrin ketone

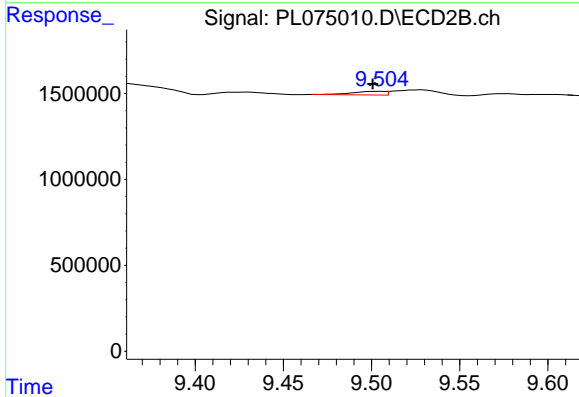
R.T.: 9.297 min
 Delta R.T.: -0.014 min
 Response: 3330208
 Conc: 2.99 ng/ml



#22 Mirex

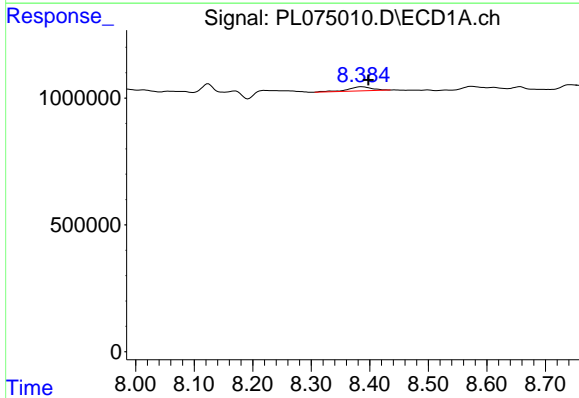
R.T.: 0.000 min
 Exp R.T.: 10.652 min
 Response: 0
 Conc: N.D.

Instrument :
 ECD_L
 ClientSampleId :



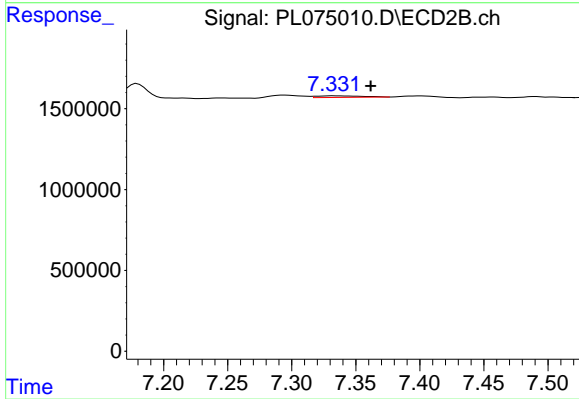
#22 Mirex

R.T.: 9.505 min
 Delta R.T.: 0.005 min
 Response: 269341
 Conc: 0.28 ng/ml



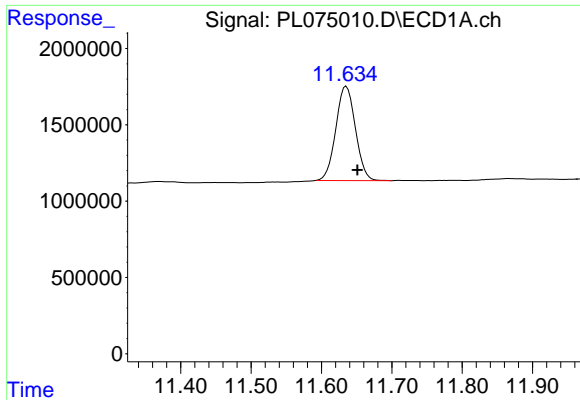
#25 Chlordane-3

R.T.: 8.386 min
 Delta R.T.: -0.012 min
 Response: 462054
 Conc: 6.75 ng/ml



#25 Chlordane-3

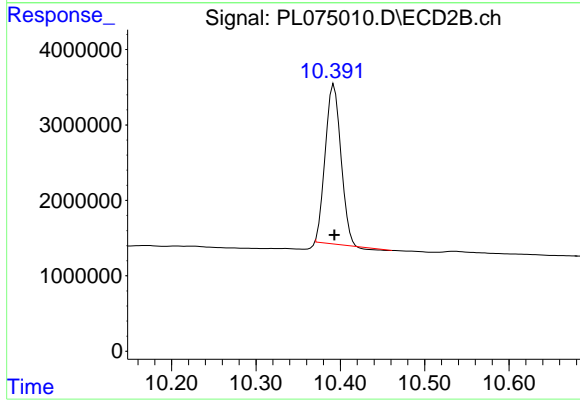
R.T.: 7.333 min
 Delta R.T.: -0.028 min
 Response: 231769
 Conc: 1.79 ng/ml



#28 Decachlorobiphenyl

R.T.: 11.635 min
Delta R.T.: -0.016 min
Response: 11965367
Conc: 26.79 ng/ml

Instrument :
ECD_L
ClientSampleId :



#28 Decachlorobiphenyl

R.T.: 10.393 min
Delta R.T.: 0.000 min
Response: 26863246
Conc: 26.17 ng/ml