

Data Path : Z:\pestpcbsrv\HPCHEM1\ECD_L\Data\PL052621\
 Data File : PL066884.D
 Signal(s) : Signal #1: ECD1A.ch Signal #2: ECD2B.ch
 Acq On : 25 May 2021 22:04
 Operator : AR\AJ
 Sample : HEXANE
 Misc :
 ALS Vial : 1 Sample Multiplier: 1

Instrument :
 ECD_L
 ClientSampleId :
 HEXANE

Integration File signal 1: autoint1.e
 Integration File signal 2: autoint2.e
 Quant Time: May 26 07:43:42 2021
 Quant Method : Z:\pestpcbsrv\HPCHEM1\ECD_L\methods\PL052421.M
 Quant Title : GC Extractables
 QLast Update : Tue May 25 06:06:45 2021
 Response via : Initial Calibration
 Integrator: ChemStation

Volume Inj. : 1 µl
 Signal #1 Phase : ZB-MR2 Signal #2 Phase: ZB-MR1
 Signal #1 Info : 30M x 0.32mm x0.2 Signal #2 Info : 30M x 0.32mm x0.5µm

Compound	RT#1	RT#2	Resp#1	Resp#2	ng/ml	ng/ml
----------	------	------	--------	--------	-------	-------

 System Monitoring Compounds

Target Compounds

8) B Heptachlo...	0.000	7.999	0	482956	N.D.	0.534 #
-------------------	-------	-------	---	--------	------	---------

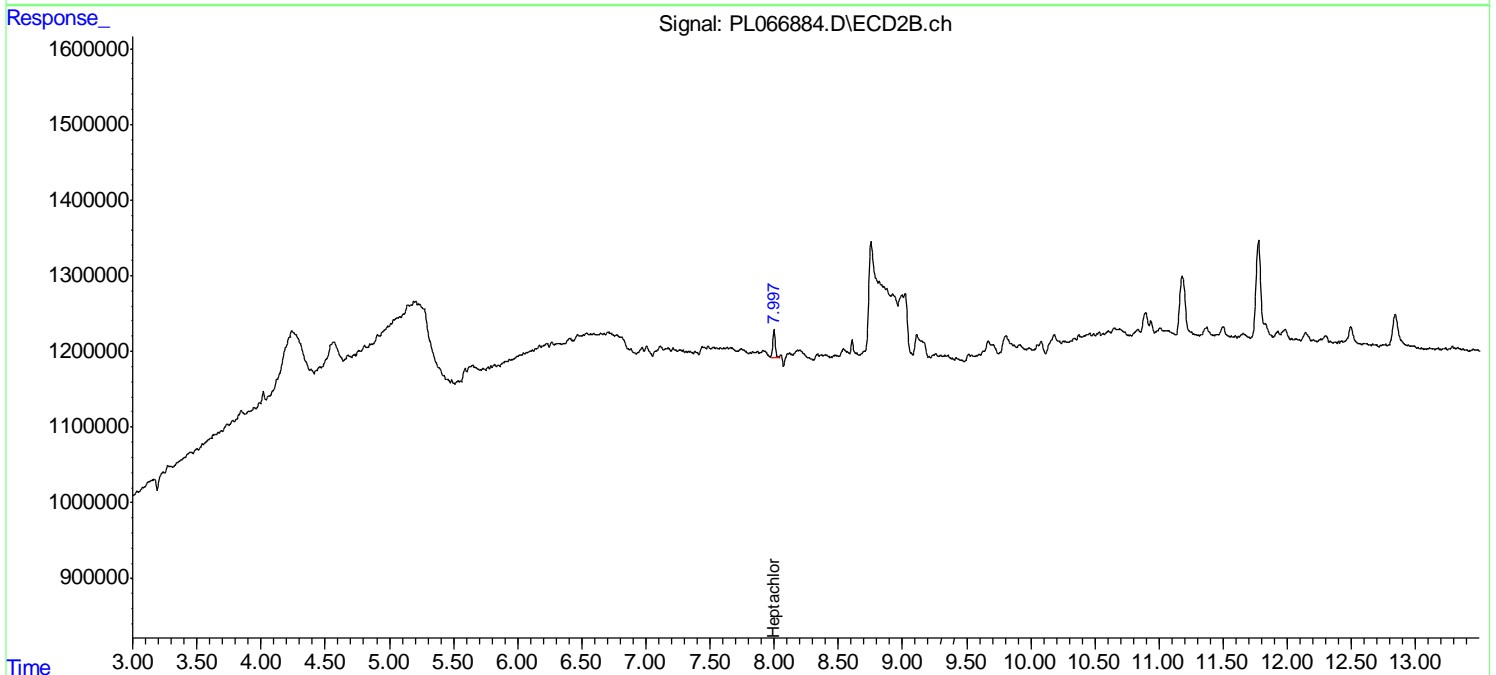
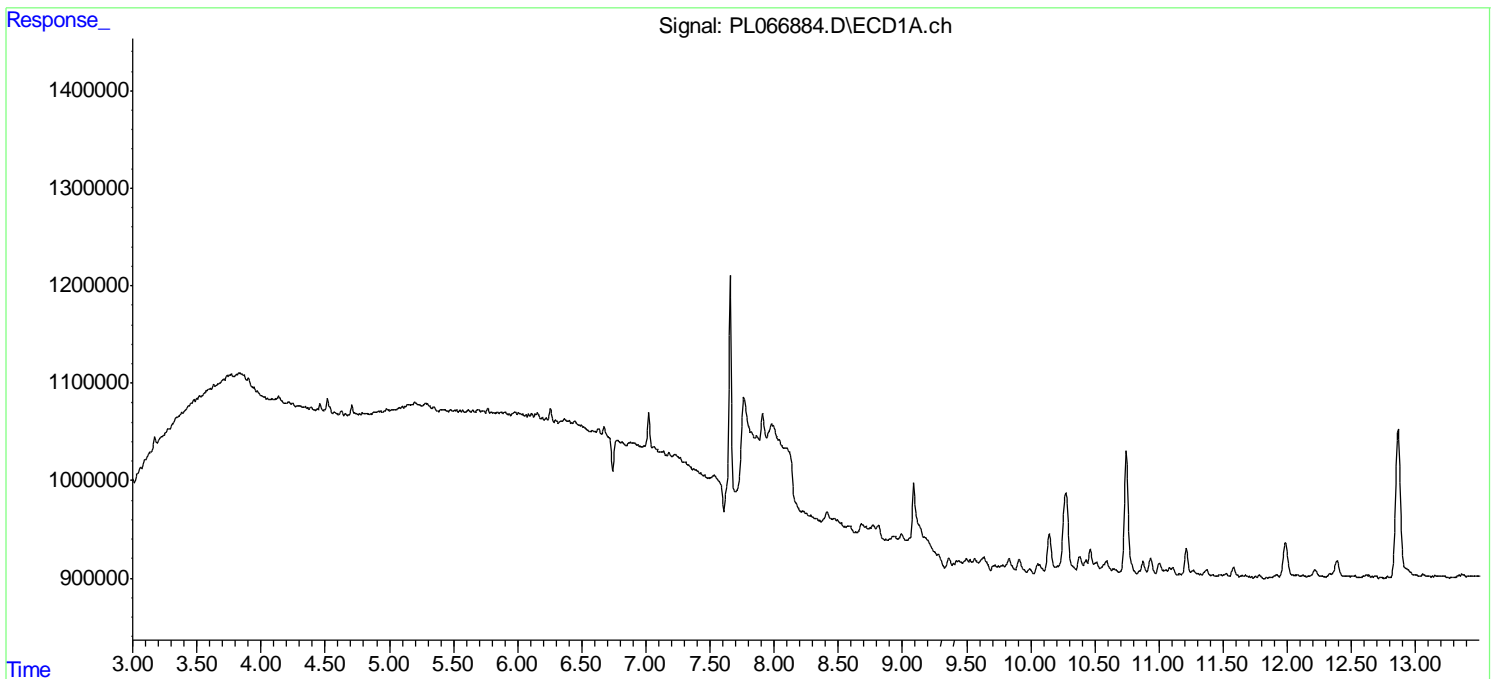
 (f)=RT Delta > 1/2 Window (#)=Amounts differ by > 25% (m)=manual int.

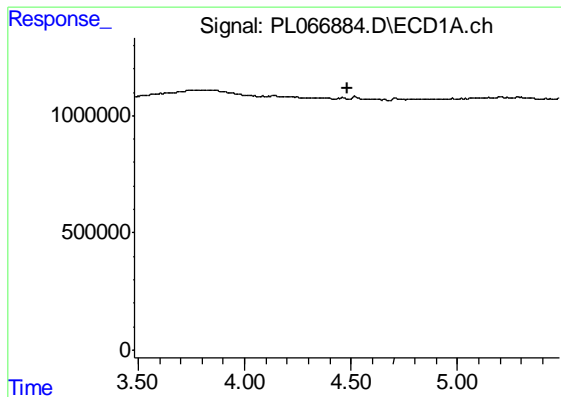
Data Path : Z:\pestpcbsrv\HPCHEM1\ECD_L\Data\PL052621\
 Data File : PL066884.D
 Signal(s) : Signal #1: ECD1A.ch Signal #2: ECD2B.ch
 Acq On : 25 May 2021 22:04
 Operator : AR\AJ
 Sample : HEXANE
 Misc :
 ALS Vial : 1 Sample Multiplier: 1

Instrument :
 ECD_L
 ClientSampleId :
 HEXANE

Integration File signal 1: autoint1.e
 Integration File signal 2: autoint2.e
 Quant Time: May 26 07:43:42 2021
 Quant Method : Z:\pestpcbsrv\HPCHEM1\ECD_L\methods\PL052421.M
 Quant Title : GC Extractables
 QLast Update : Tue May 25 06:06:45 2021
 Response via : Initial Calibration
 Integrator: ChemStation

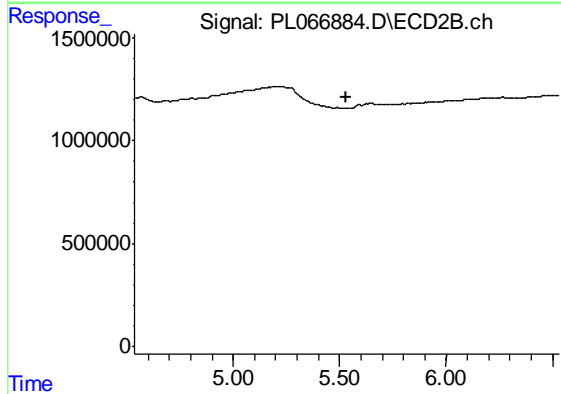
Volume Inj. : 1 µl
 Signal #1 Phase : ZB-MR2 Signal #2 Phase: ZB-MR1
 Signal #1 Info : 30M x 0.32mm x0.2 Signal #2 Info : 30M x 0.32mm x0.5µm



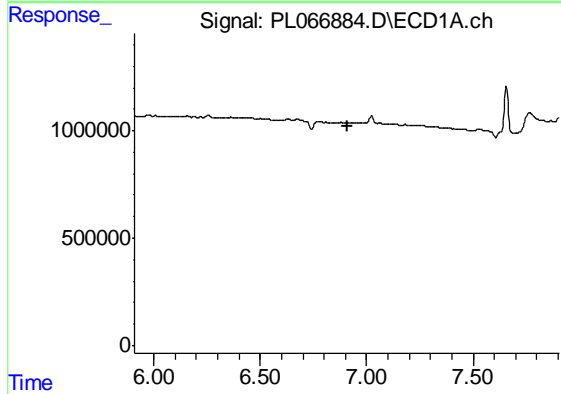


#1 Tetrachloro-m-xylene
 R.T.: 0.000 min
 Exp R.T. : 4.482 min
 Response: 0
 Conc: N.D.

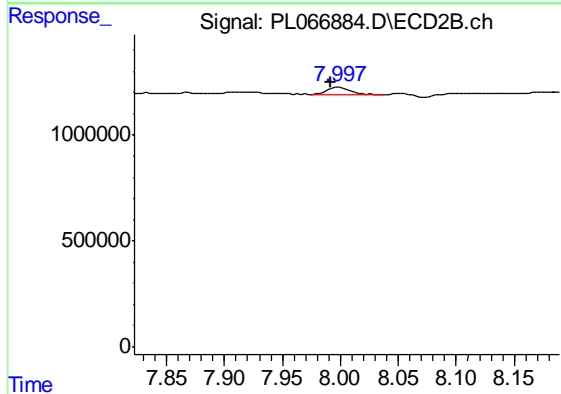
Instrument :
 ECD_L
 ClientSampled :
 HEXANE



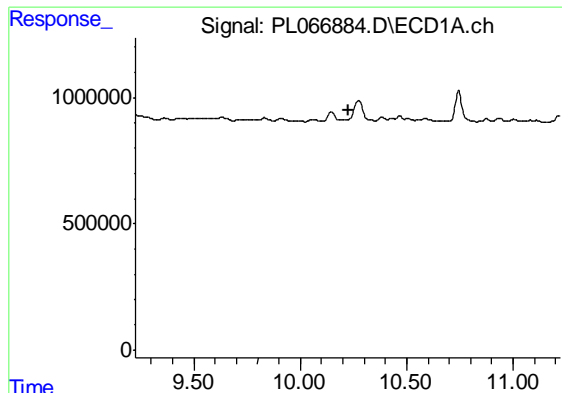
#1 Tetrachloro-m-xylene
 R.T.: 0.000 min
 Exp R.T. : 5.532 min
 Response: 0
 Conc: N.D.



#8 Heptachlor epoxide
 R.T.: 0.000 min
 Exp R.T. : 6.908 min
 Response: 0
 Conc: N.D.



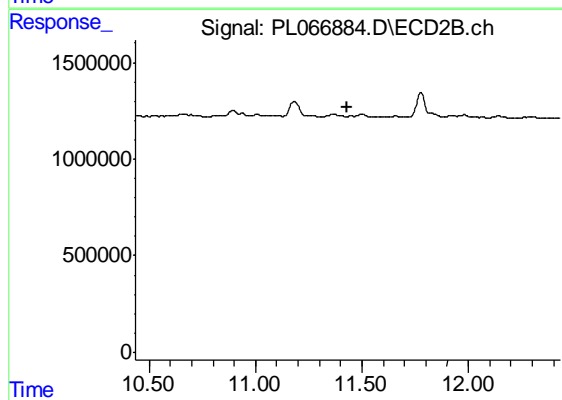
#8 Heptachlor epoxide
 R.T.: 7.999 min
 Delta R.T.: 0.007 min
 Response: 482956
 Conc: 0.53 ng/ml



#28 Decachlorobiphenyl

R.T.: 0.000 min
Exp R.T. : 10.225 min
Response: 0
Conc: N.D.

Instrument :
ECD_L
ClientSampleId :
HEXANE



#28 Decachlorobiphenyl

R.T.: 0.000 min
Exp R.T. : 11.433 min
Response: 0
Conc: N.D.