

Data Path : Z:\pestpcbsrv\HPCHEM1\ECD_L\Data\PL052621\
 Data File : PL066893.D
 Signal(s) : Signal #1: ECD1A.ch Signal #2: ECD2B.ch
 Acq On : 26 May 2021 01:00
 Operator : AR\AJ
 Sample : M2262-09
 Misc : PEST MDL 1 PPB
 ALS Vial : 26 Sample Multiplier: 1

Instrument :
 ECD_L
ClientSampleId :
 MDL-WATER-03-QT2-2021

Manual Integrations
APPROVED
 Ankita
 5/26/2021 4:08:09 PM

Integration File signal 1: autoint1.e
 Integration File signal 2: autoint2.e
 Quant Time: May 26 08:21:47 2021
 Quant Method : Z:\pestpcbsrv\HPCHEM1\ECD_L\methods\PL052421.M
 Quant Title : GC Extractables
 QLast Update : Tue May 25 06:06:45 2021
 Response via : Initial Calibration
 Integrator: ChemStation

Volume Inj. : 1 µl
 Signal #1 Phase : ZB-MR2 Signal #2 Phase: ZB-MR1
 Signal #1 Info : 30M x 0.32mm x0.2 Signal #2 Info : 30M x 0.32mm x0.5µm

Compound	RT#1	RT#2	Resp#1	Resp#2	ng/ml	ng/ml

System Monitoring Compounds						
1) SA Tetrachlo...	4.481	5.532	8603798	13190897	14.996	15.358
28) SA Decachlor...	10.224	11.431	12358959	14939435	16.620	17.337
Target Compounds						
2) A alpha-BHC	5.177	6.111	855668	878495	0.940m	0.780
3) MA gamma-BHC...	5.599	6.506	760586	872607	0.965	0.822
4) MA Heptachlor	6.011	7.154	682283	839432	0.923	0.894
5) MB Aldrin	6.333	7.525	707809	763623	0.876	0.781
6) B beta-BHC	5.982	6.760	487967	460430	1.245	0.876m#
7) B delta-BHC	6.239	7.026	718147	1285774	0.877	1.186 #
8) B Heptachlo...	6.906	7.989	783447	1041090	1.036	1.152m
9) A Endosulfan I	7.305	8.396	776474	799909	1.054	0.967
10) B gamma-Chl...	7.185	8.260	821043	1057267	1.028	1.133
11) B alpha-Chl...	7.253	8.341	866367	883231	1.078	0.961
12) B 4,4'-DDE	7.472	8.529	692400	706021	0.925	0.852
13) MA Dieldrin	7.589	8.685	710342	784286	0.924m	0.943
14) MA Endrin	7.878	8.923	698105	628525	1.021	0.933
15) B Endosulfa...	8.187	9.156	768065	795718	1.104	1.051m
16) A 4,4'-DDD	8.053	9.068	634519	836048	0.980	1.216
17) MA 4,4'-DDT	8.313	9.386	402744	476501	0.714	0.802
18) B Endrin al...	8.375	9.292	651631	684469	1.096	1.067
19) B Endosulfa...	8.606	9.530	743077	791432	1.052	1.036
20) A Methoxychlor	8.907	9.872	307873	316276	0.915	0.927m
21) B Endrin ke...	9.116	10.027	766893	847572	0.917	0.989
22) Mirex	9.304	10.494	842219	809798	1.205	1.122

(f)=RT Delta > 1/2 Window (#)=Amounts differ by > 25% (m)=manual int.

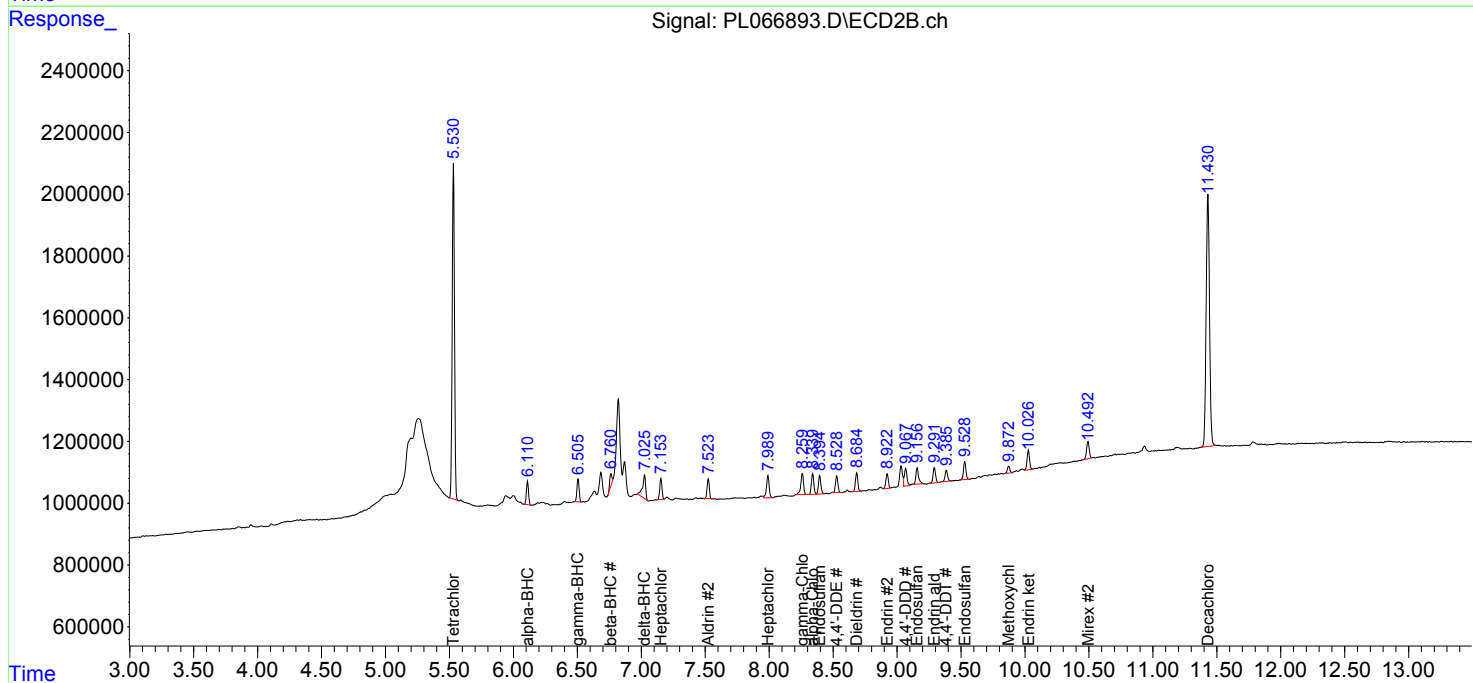
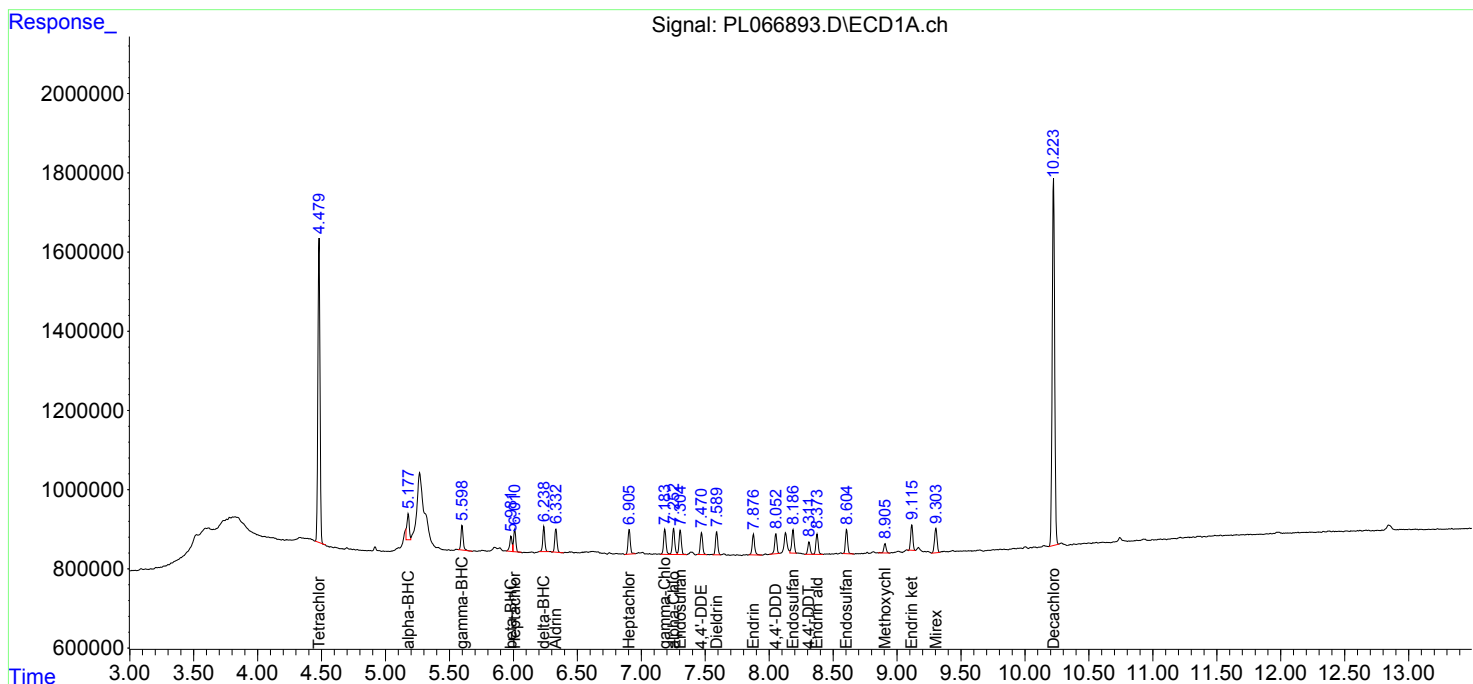
Data Path : Z:\pestpcbsrv\HPCHEM1\ECD_L\Data\PL052621\
 Data File : PL066893.D
 Signal(s) : Signal #1: ECD1A.ch Signal #2: ECD2B.ch
 Acq On : 26 May 2021 01:00
 Operator : AR\AJ
 Sample : M2262-09
 Misc : PEST MDL 1 PPB
 ALS Vial : 26 Sample Multiplier: 1

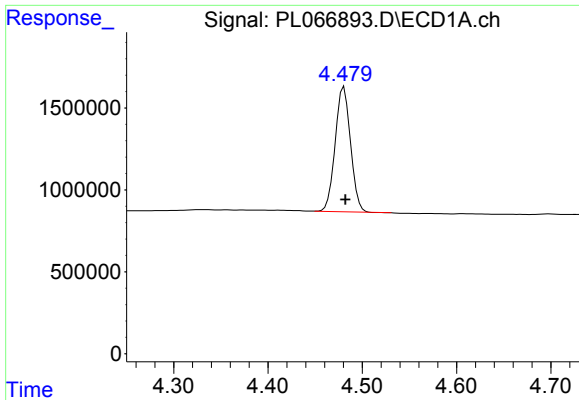
Instrument :
 ECD_L
Client Sampled :
 MDL-WATER-03-QT2-2021

Manual Integrations
APPROVED
 Ankita
 5/26/2021 4:08:09 PM

Integration File signal 1: autoint1.e
 Integration File signal 2: autoint2.e
 Quant Time: May 26 08:21:47 2021
 Quant Method : Z:\pestpcbsrv\HPCHEM1\ECD_L\methods\PL052421.M
 Quant Title : GC Extractables
 QLast Update : Tue May 25 06:06:45 2021
 Response via : Initial Calibration
 Integrator: ChemStation

Volume Inj. : 1 µl
 Signal #1 Phase : ZB-MR2 Signal #2 Phase: ZB-MR1
 Signal #1 Info : 30M x 0.32mm x0.2 Signal #2 Info : 30M x 0.32mm x0.5µm

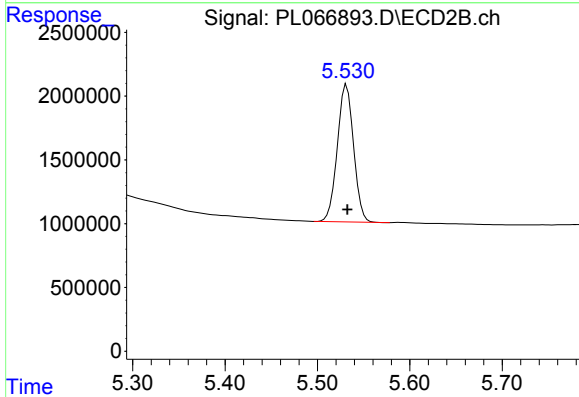




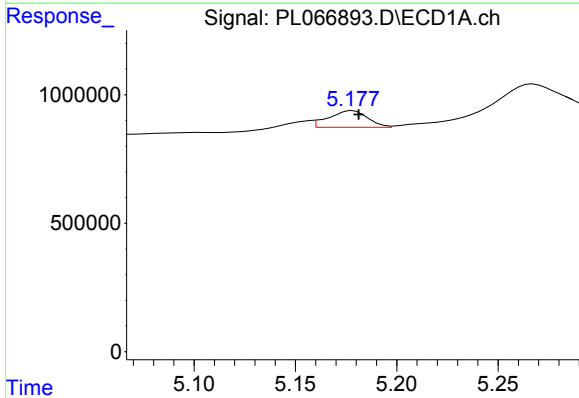
#1 Tetrachloro-m-xylene
 R.T.: 4.481 min
 Delta R.T.: -0.001 min
 Response: 8603798
 Conc: 15.00 ng/ml

Instrument :
 ECD_L
ClientSampled :
 MDL-WATER-03-QT2-2021

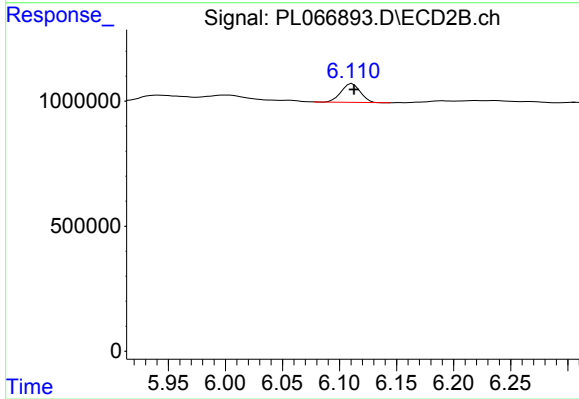
Manual Integrations
APPROVED
 Ankita
 5/26/2021 4:08:09 PM



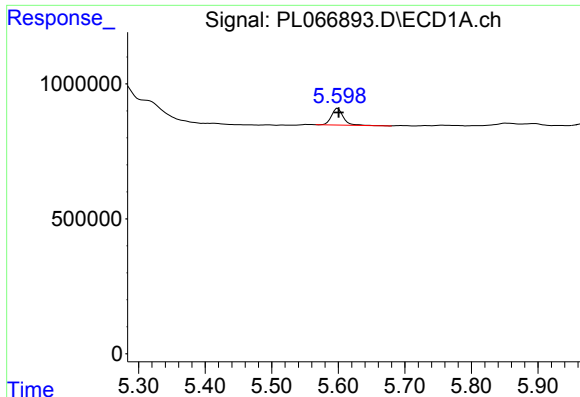
#1 Tetrachloro-m-xylene
 R.T.: 5.532 min
 Delta R.T.: 0.000 min
 Response: 13190897
 Conc: 15.36 ng/ml



#2 alpha-BHC
 R.T.: 5.177 min
 Delta R.T.: -0.004 min
 Response: 855668
 Conc: 0.94 ng/ml m



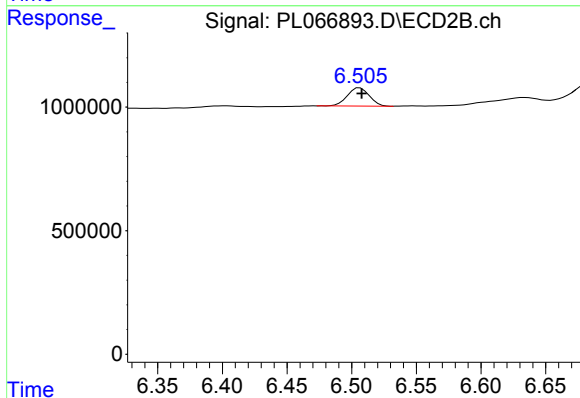
#2 alpha-BHC
 R.T.: 6.111 min
 Delta R.T.: -0.001 min
 Response: 878495
 Conc: 0.78 ng/ml



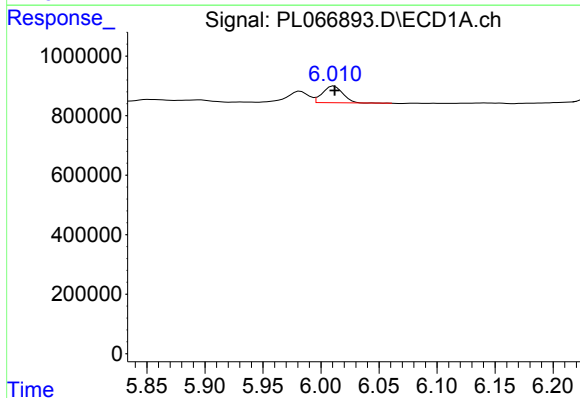
#3 gamma-BHC (Lindane)
 R.T.: 5.599 min
 Delta R.T.: -0.001 min
 Response: 760586
 Conc: 0.97 ng/ml

Instrument :
 ECD_L
 ClientSampleId :
 MDL-WATER-03-QT2-2021

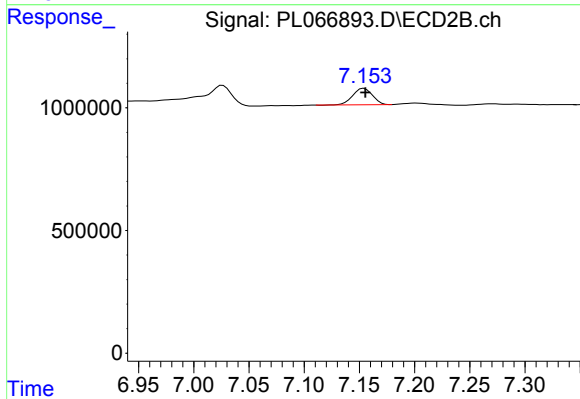
Manual Integrations
 APPROVED
 Ankita
 5/26/2021 4:08:09 PM



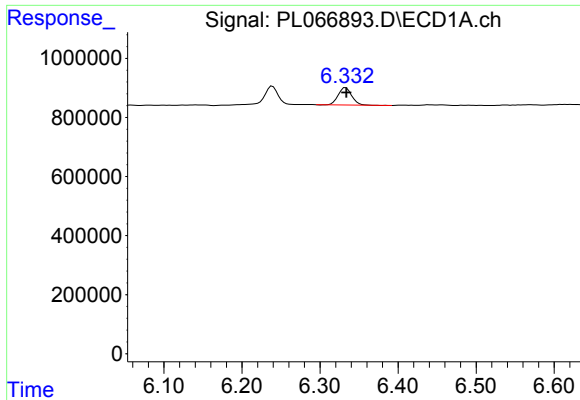
#3 gamma-BHC (Lindane)
 R.T.: 6.506 min
 Delta R.T.: -0.001 min
 Response: 872607
 Conc: 0.82 ng/ml



#4 Heptachlor
 R.T.: 6.011 min
 Delta R.T.: 0.000 min
 Response: 682283
 Conc: 0.92 ng/ml



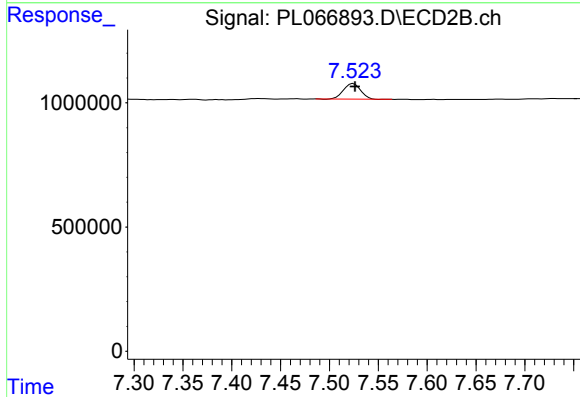
#4 Heptachlor
 R.T.: 7.154 min
 Delta R.T.: -0.001 min
 Response: 839432
 Conc: 0.89 ng/ml



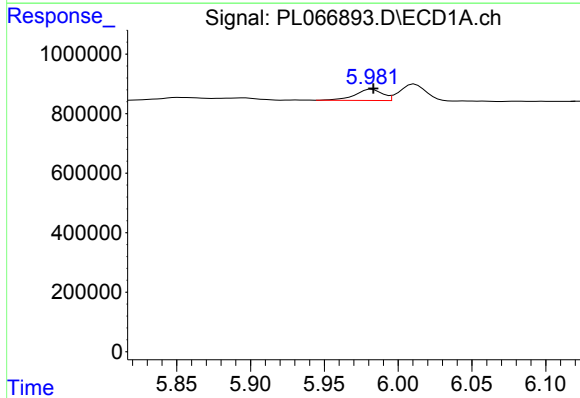
#5 Aldrin
 R.T.: 6.333 min
 Delta R.T.: -0.001 min
 Response: 707809
 Conc: 0.88 ng/ml

Instrument :
 ECD_L
ClientSampled :
 MDL-WATER-03-QT2-2021

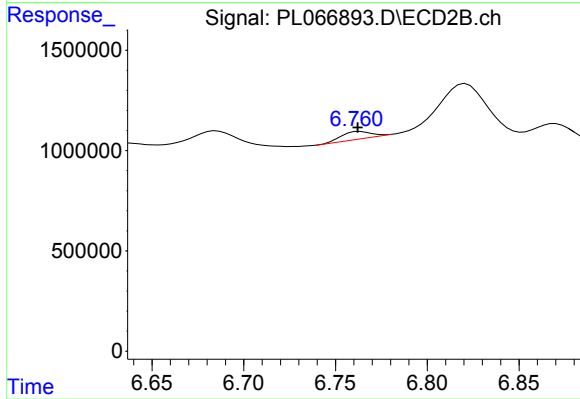
Manual Integrations
APPROVED
 Ankita
 5/26/2021 4:08:09 PM



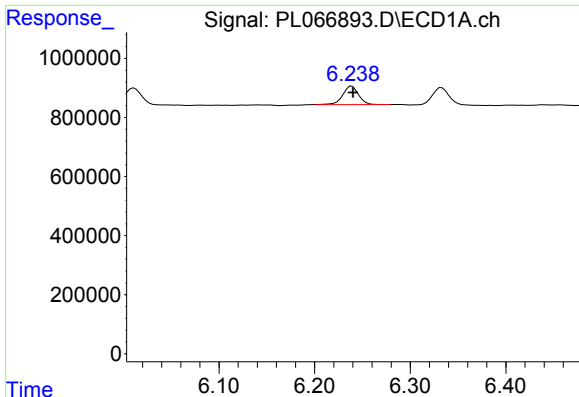
#5 Aldrin
 R.T.: 7.525 min
 Delta R.T.: -0.002 min
 Response: 763623
 Conc: 0.78 ng/ml



#6 beta-BHC
 R.T.: 5.982 min
 Delta R.T.: 0.000 min
 Response: 487967
 Conc: 1.24 ng/ml



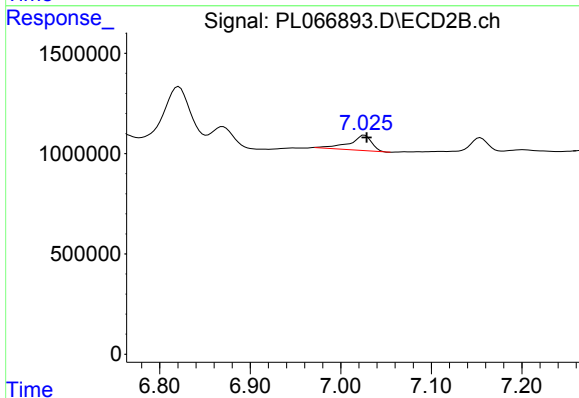
#6 beta-BHC
 R.T.: 6.760 min
 Delta R.T.: -0.002 min
 Response: 460430
 Conc: 0.88 ng/ml m



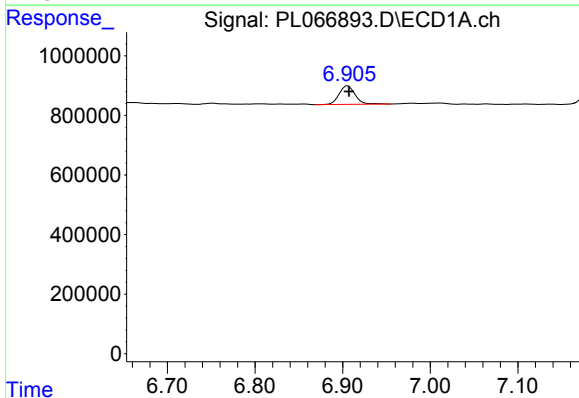
#7 delta-BHC
 R.T.: 6.239 min
 Delta R.T.: -0.001 min
 Response: 718147
 Conc: 0.88 ng/ml

Instrument :
 ECD_L
ClientSampled :
 MDL-WATER-03-QT2-2021

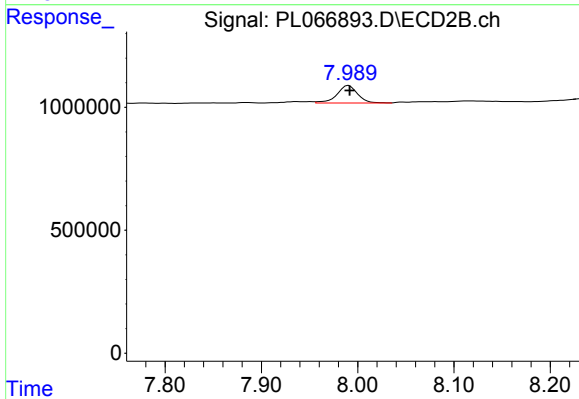
Manual Integrations
APPROVED
 Ankita
 5/26/2021 4:08:09 PM



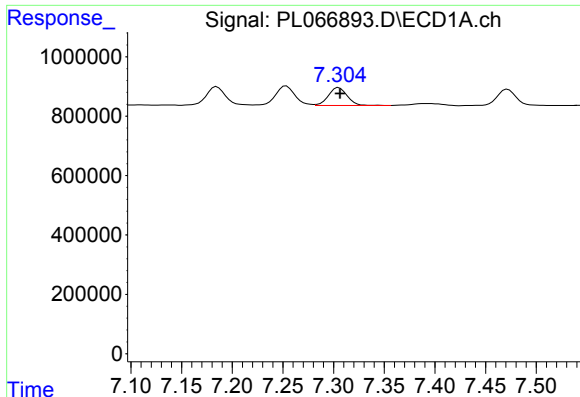
#7 delta-BHC
 R.T.: 7.026 min
 Delta R.T.: -0.002 min
 Response: 1285774
 Conc: 1.19 ng/ml



#8 Heptachlor epoxide
 R.T.: 6.906 min
 Delta R.T.: -0.001 min
 Response: 783447
 Conc: 1.04 ng/ml



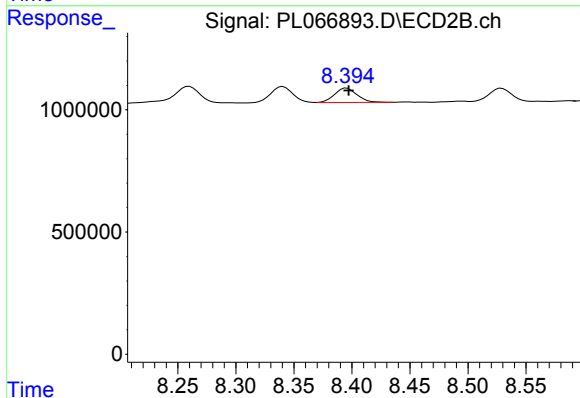
#8 Heptachlor epoxide
 R.T.: 7.989 min
 Delta R.T.: -0.002 min
 Response: 1041090
 Conc: 1.15 ng/ml m



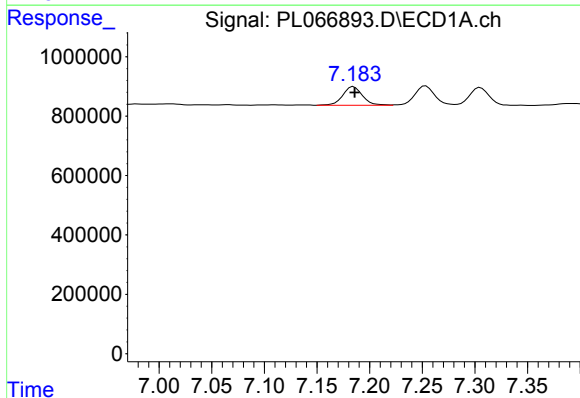
#9 Endosulfan I
 R.T.: 7.305 min
 Delta R.T.: -0.001 min
 Response: 776474
 Conc: 1.05 ng/ml

Instrument :
 ECD_L
 ClientSampleId :
 MDL-WATER-03-QT2-2021

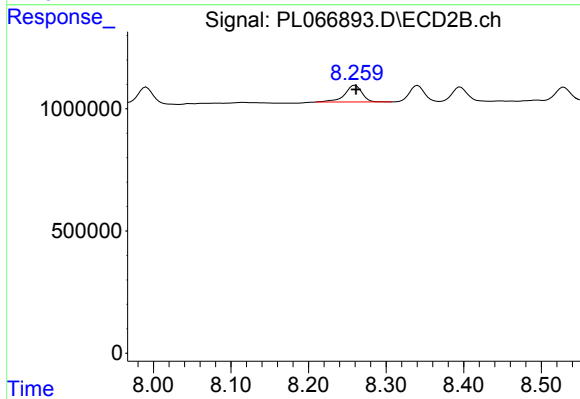
Manual Integrations
 APPROVED
 Ankita
 5/26/2021 4:08:09 PM



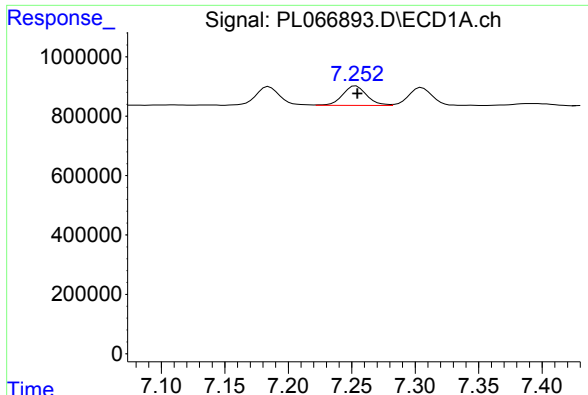
#9 Endosulfan I
 R.T.: 8.396 min
 Delta R.T.: -0.001 min
 Response: 799909
 Conc: 0.97 ng/ml



#10 gamma-Chlordane
 R.T.: 7.185 min
 Delta R.T.: 0.000 min
 Response: 821043
 Conc: 1.03 ng/ml



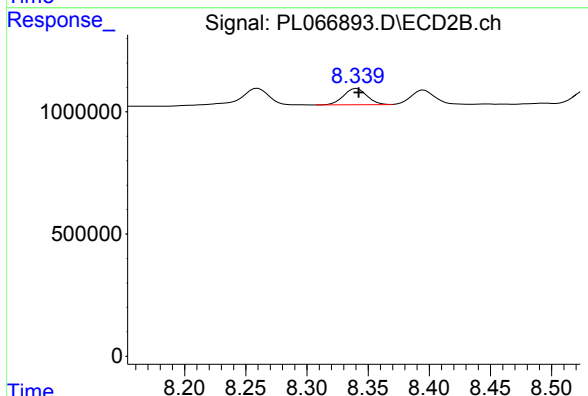
#10 gamma-Chlordane
 R.T.: 8.260 min
 Delta R.T.: -0.001 min
 Response: 1057267
 Conc: 1.13 ng/ml



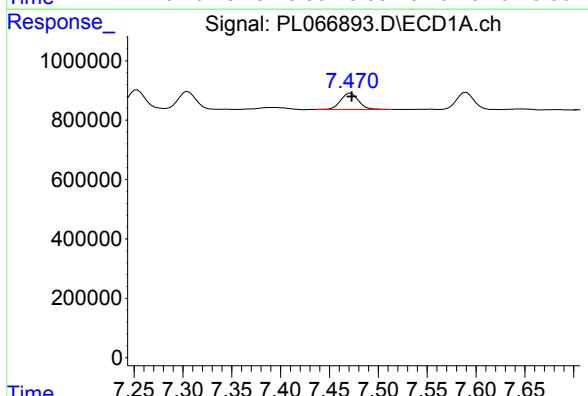
#11 alpha-Chlordane
 R.T.: 7.253 min
 Delta R.T.: -0.001 min
 Response: 866367
 Conc: 1.08 ng/ml

Instrument :
 ECD_L
 ClientSampleId :
 MDL-WATER-03-QT2-2021

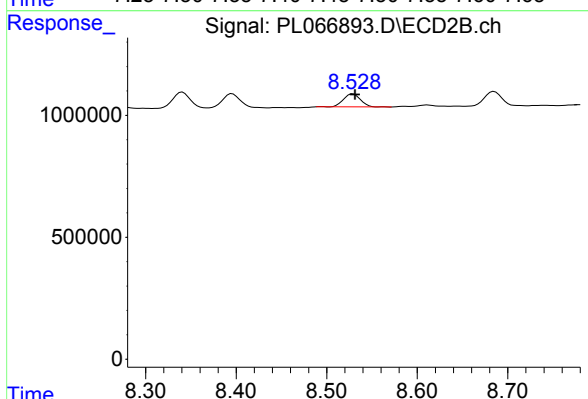
Manual Integrations
 APPROVED
 Ankita
 5/26/2021 4:08:09 PM



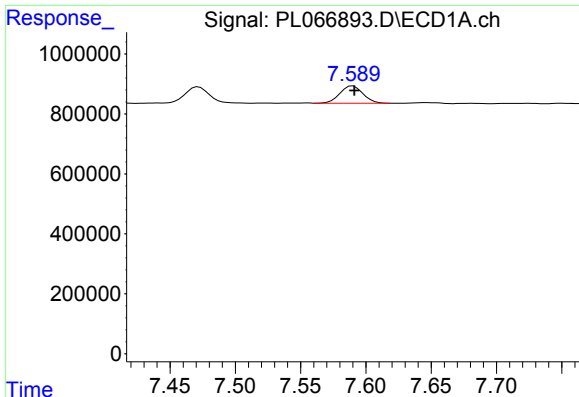
#11 alpha-Chlordane
 R.T.: 8.341 min
 Delta R.T.: -0.002 min
 Response: 883231
 Conc: 0.96 ng/ml



#12 4,4'-DDE
 R.T.: 7.472 min
 Delta R.T.: -0.001 min
 Response: 692400
 Conc: 0.92 ng/ml



#12 4,4'-DDE
 R.T.: 8.529 min
 Delta R.T.: -0.002 min
 Response: 706021
 Conc: 0.85 ng/ml



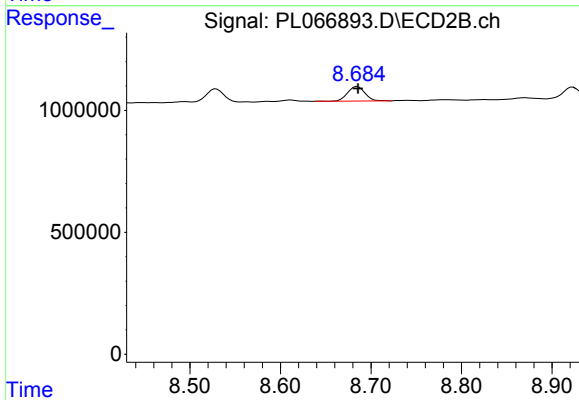
#13 Dieldrin

R.T.: 7.589 min
 Delta R.T.: -0.003 min
 Response: 710342
 Conc: 0.92 ng/ml m

Instrument :
 ECD_L
 ClientSampleId :
 MDL-WATER-03-QT2-2021

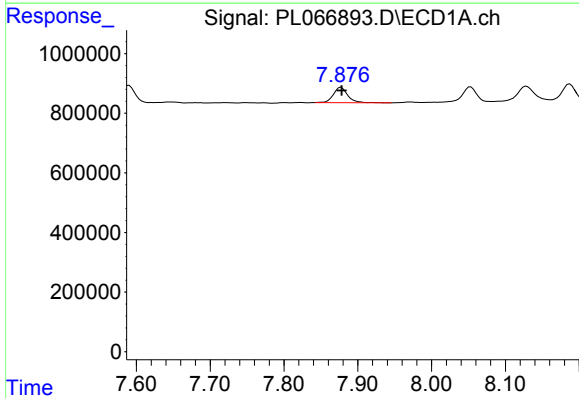
Manual Integrations
 APPROVED

Ankita
 5/26/2021 4:08:09 PM



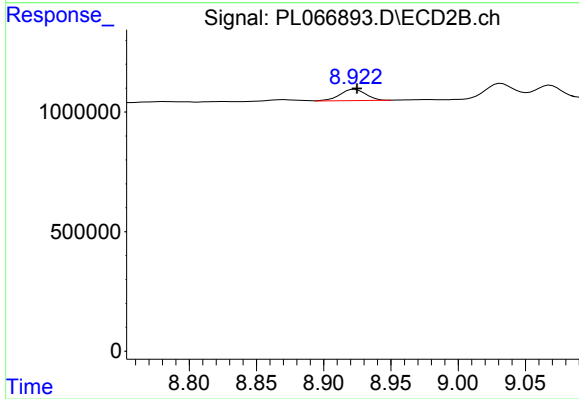
#13 Dieldrin

R.T.: 8.685 min
 Delta R.T.: 0.000 min
 Response: 784286
 Conc: 0.94 ng/ml



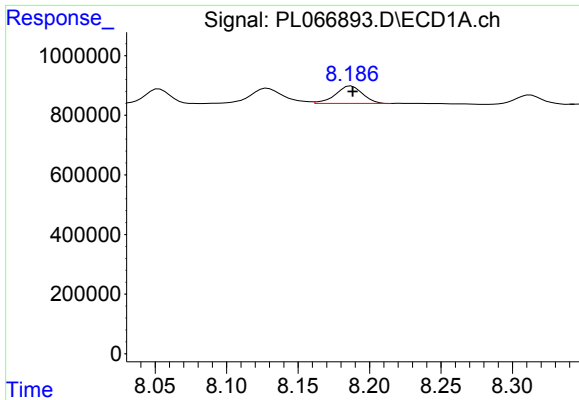
#14 Endrin

R.T.: 7.878 min
 Delta R.T.: 0.000 min
 Response: 698105
 Conc: 1.02 ng/ml



#14 Endrin

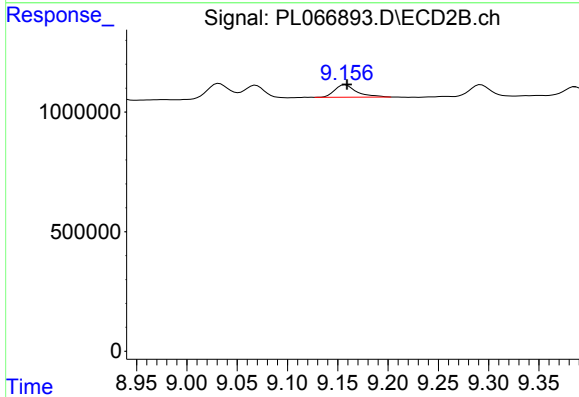
R.T.: 8.923 min
 Delta R.T.: -0.002 min
 Response: 628525
 Conc: 0.93 ng/ml



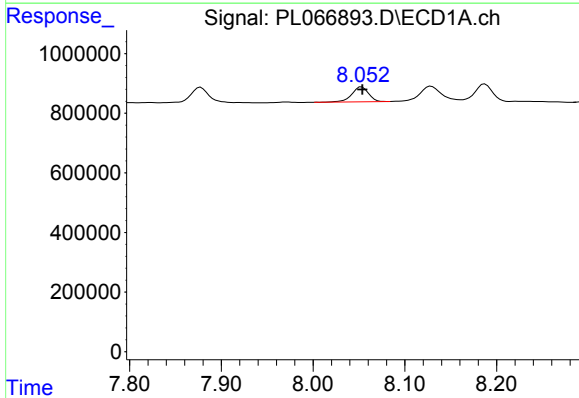
#15 Endosulfan II
 R.T.: 8.187 min
 Delta R.T.: 0.000 min
 Response: 768065
 Conc: 1.10 ng/ml

Instrument :
 ECD_L
ClientSampled :
 MDL-WATER-03-QT2-2021

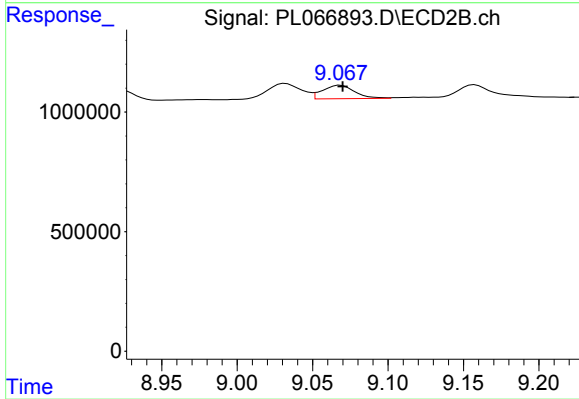
Manual Integrations
APPROVED
 Ankita
 5/26/2021 4:08:09 PM



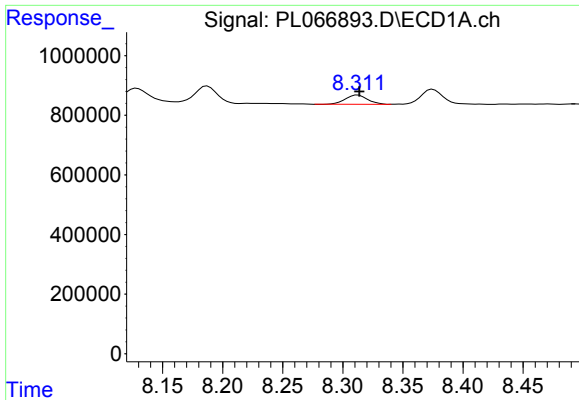
#15 Endosulfan II
 R.T.: 9.156 min
 Delta R.T.: -0.003 min
 Response: 795718
 Conc: 1.05 ng/ml m



#16 4,4'-DDD
 R.T.: 8.053 min
 Delta R.T.: 0.000 min
 Response: 634519
 Conc: 0.98 ng/ml



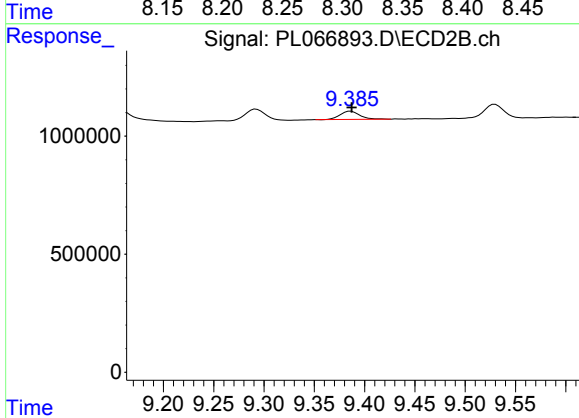
#16 4,4'-DDD
 R.T.: 9.068 min
 Delta R.T.: -0.001 min
 Response: 836048
 Conc: 1.22 ng/ml



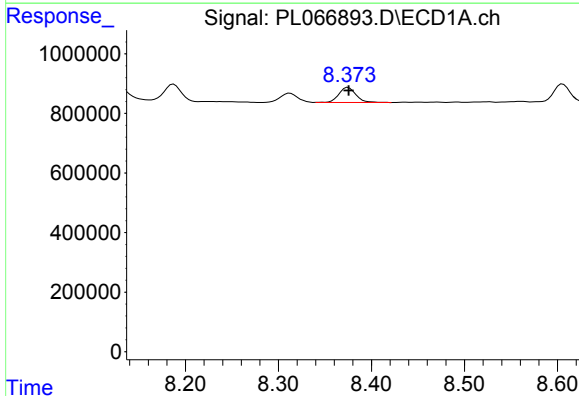
#17 4,4'-DDT
 R.T.: 8.313 min
 Delta R.T.: -0.001 min
 Response: 402744
 Conc: 0.71 ng/ml

Instrument :
 ECD_L
ClientSampled :
 MDL-WATER-03-QT2-2021

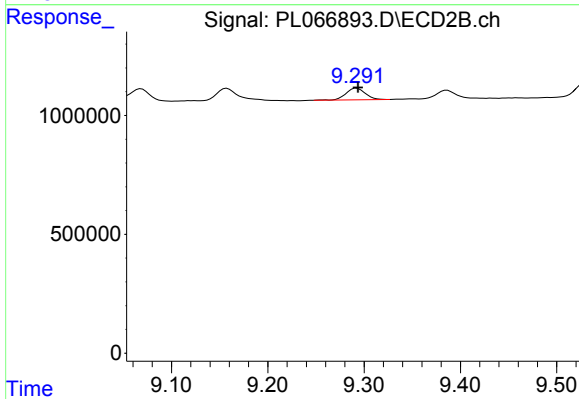
Manual Integrations
APPROVED
 Ankita
 5/26/2021 4:08:09 PM



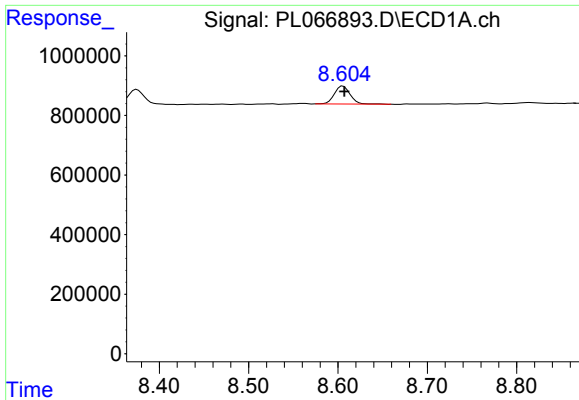
#17 4,4'-DDT
 R.T.: 9.386 min
 Delta R.T.: 0.000 min
 Response: 476501
 Conc: 0.80 ng/ml



#18 Endrin aldehyde
 R.T.: 8.375 min
 Delta R.T.: 0.000 min
 Response: 651631
 Conc: 1.10 ng/ml



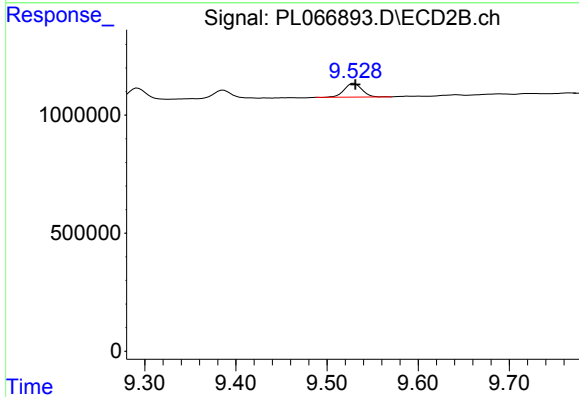
#18 Endrin aldehyde
 R.T.: 9.292 min
 Delta R.T.: -0.001 min
 Response: 684469
 Conc: 1.07 ng/ml



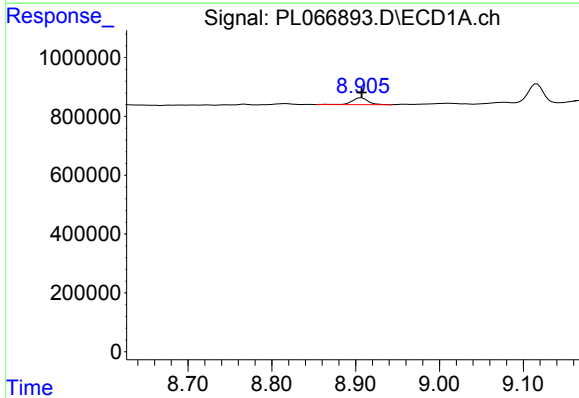
#19 Endosulfan Sulfate
 R.T.: 8.606 min
 Delta R.T.: -0.002 min
 Response: 743077
 Conc: 1.05 ng/ml

Instrument :
 ECD_L
ClientSampleId :
 MDL-WATER-03-QT2-2021

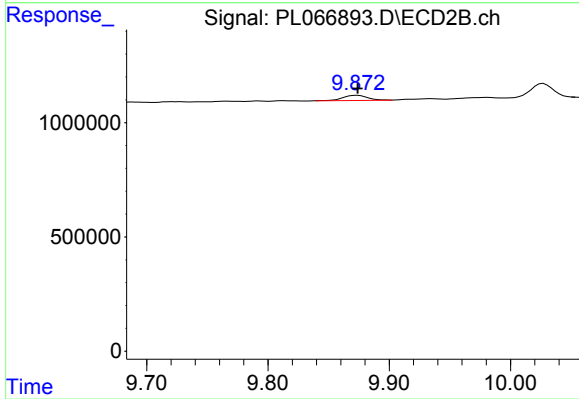
Manual Integrations
APPROVED
 Ankita
 5/26/2021 4:08:09 PM



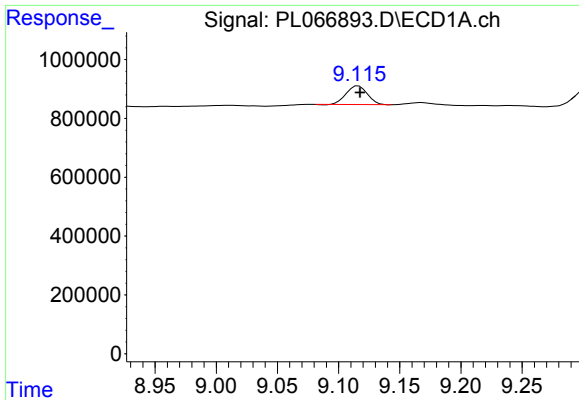
#19 Endosulfan Sulfate
 R.T.: 9.530 min
 Delta R.T.: -0.001 min
 Response: 791432
 Conc: 1.04 ng/ml



#20 Methoxychlor
 R.T.: 8.907 min
 Delta R.T.: 0.000 min
 Response: 307873
 Conc: 0.92 ng/ml



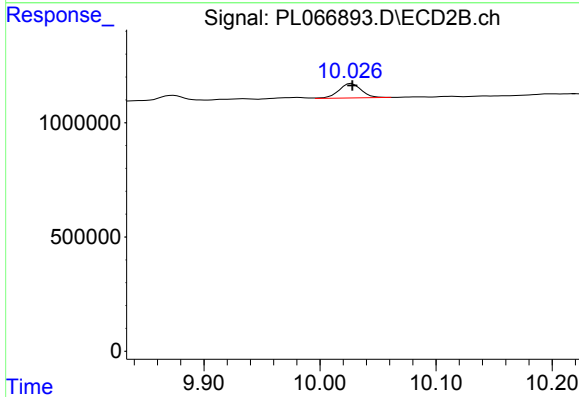
#20 Methoxychlor
 R.T.: 9.872 min
 Delta R.T.: -0.002 min
 Response: 316276
 Conc: 0.93 ng/ml m



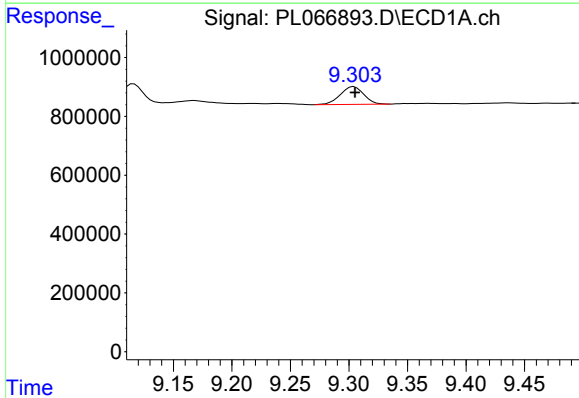
#21 Endrin ketone
 R.T.: 9.116 min
 Delta R.T.: -0.001 min
 Response: 766893
 Conc: 0.92 ng/ml

Instrument :
 ECD_L
ClientSampled :
 MDL-WATER-03-QT2-2021

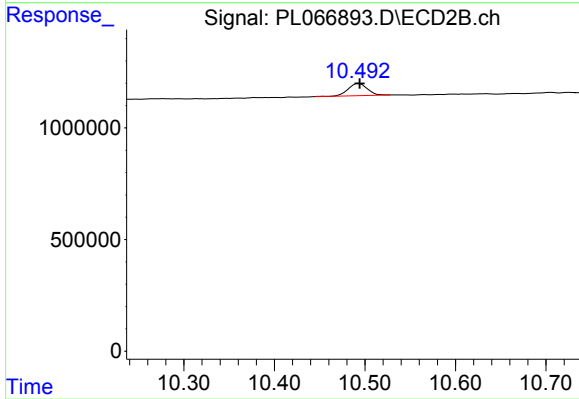
Manual Integrations
APPROVED
 Ankita
 5/26/2021 4:08:09 PM



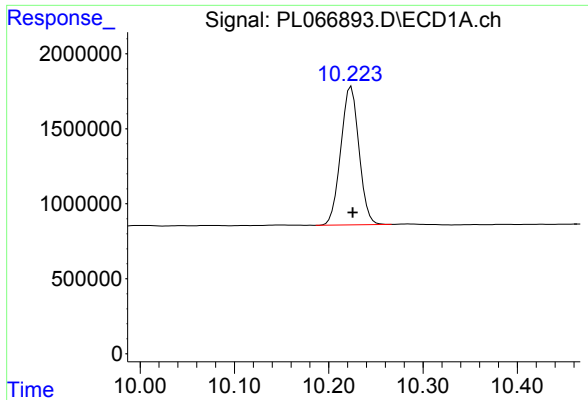
#21 Endrin ketone
 R.T.: 10.027 min
 Delta R.T.: 0.000 min
 Response: 847572
 Conc: 0.99 ng/ml



#22 Mirex
 R.T.: 9.304 min
 Delta R.T.: 0.000 min
 Response: 842219
 Conc: 1.21 ng/ml



#22 Mirex
 R.T.: 10.494 min
 Delta R.T.: 0.000 min
 Response: 809798
 Conc: 1.12 ng/ml



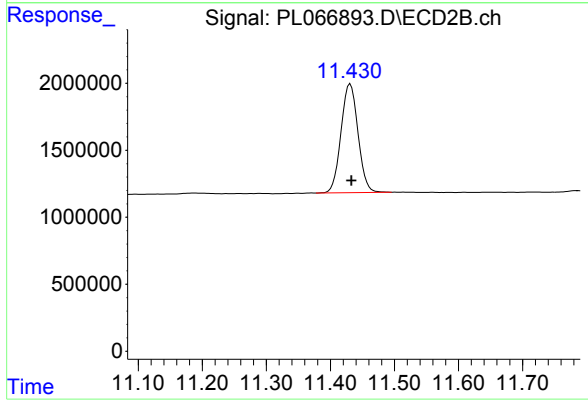
#28 Decachlorobiphenyl

R.T.: 10.224 min
Delta R.T.: -0.001 min
Response: 12358959
Conc: 16.62 ng/ml

Instrument :
ECD_L
ClientSampleId :
MDL-WATER-03-QT2-2021

Manual Integrations
APPROVED

Ankita
5/26/2021 4:08:09 PM



#28 Decachlorobiphenyl

R.T.: 11.431 min
Delta R.T.: -0.002 min
Response: 14939435
Conc: 17.34 ng/ml