

Data Path : Z:\pestpcbsrv\HPCHEM1\ECD_L\Data\PL052621\
 Data File : PL066896.D
 Signal(s) : Signal #1: ECD1A.ch Signal #2: ECD2B.ch
 Acq On : 26 May 2021 01:59
 Operator : AR\AJ
 Sample : M2262-03
 Misc : CHLOR MDL 25 PPB
 ALS Vial : 29 Sample Multiplier: 1

Instrument :
 ECD_L
ClientSampleId :
 MDL-SOIL-03-QT2-2021

Manual Integrations
APPROVED
 Ankita
 5/26/2021 4:08:15 PM

Integration File signal 1: autoint1.e
 Integration File signal 2: autoint2.e
 Quant Time: May 26 08:32:37 2021
 Quant Method : Z:\pestpcbsrv\HPCHEM1\ECD_L\methods\PL052421.M
 Quant Title : GC Extractables
 QLast Update : Tue May 25 06:06:45 2021
 Response via : Initial Calibration
 Integrator: ChemStation

Volume Inj. : 1 µl
 Signal #1 Phase : ZB-MR2 Signal #2 Phase: ZB-MR1
 Signal #1 Info : 30M x 0.32mm x0.2 Signal #2 Info : 30M x 0.32mm x0.5µm

Compound	RT#1	RT#2	Resp#1	Resp#2	ng/ml	ng/ml

System Monitoring Compounds						
1) SA Tetrachlo...	4.481	5.531	10739355	15799529	18.718	18.395
28) SA Decachlor...	10.224	11.430	14722679	17787684	19.799	20.642
Target Compounds						
23) Chlordane-1	5.800	6.911	453528	512519	20.710	17.017m
24) Chlordane-2	6.487	7.502	723027	829806	23.969	21.476m
25) Chlordane-3	7.185	8.259	1684935	2839887	20.910	21.547m
26) Chlordane-4	7.252	8.343	1847368	3381276	21.244	21.226
27) Chlordane-5	8.192	9.228	623077	498605	21.348	17.654m

(f)=RT Delta > 1/2 Window (#)=Amounts differ by > 25% (m)=manual int.

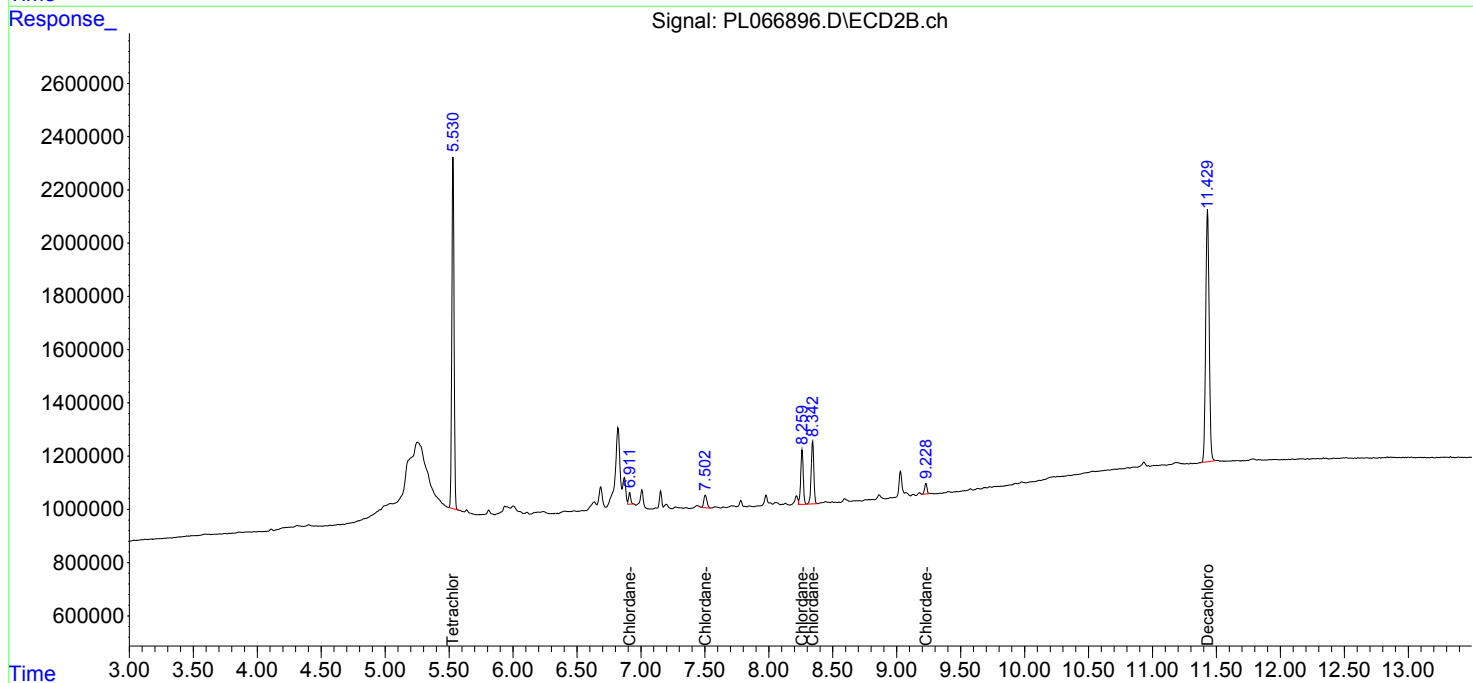
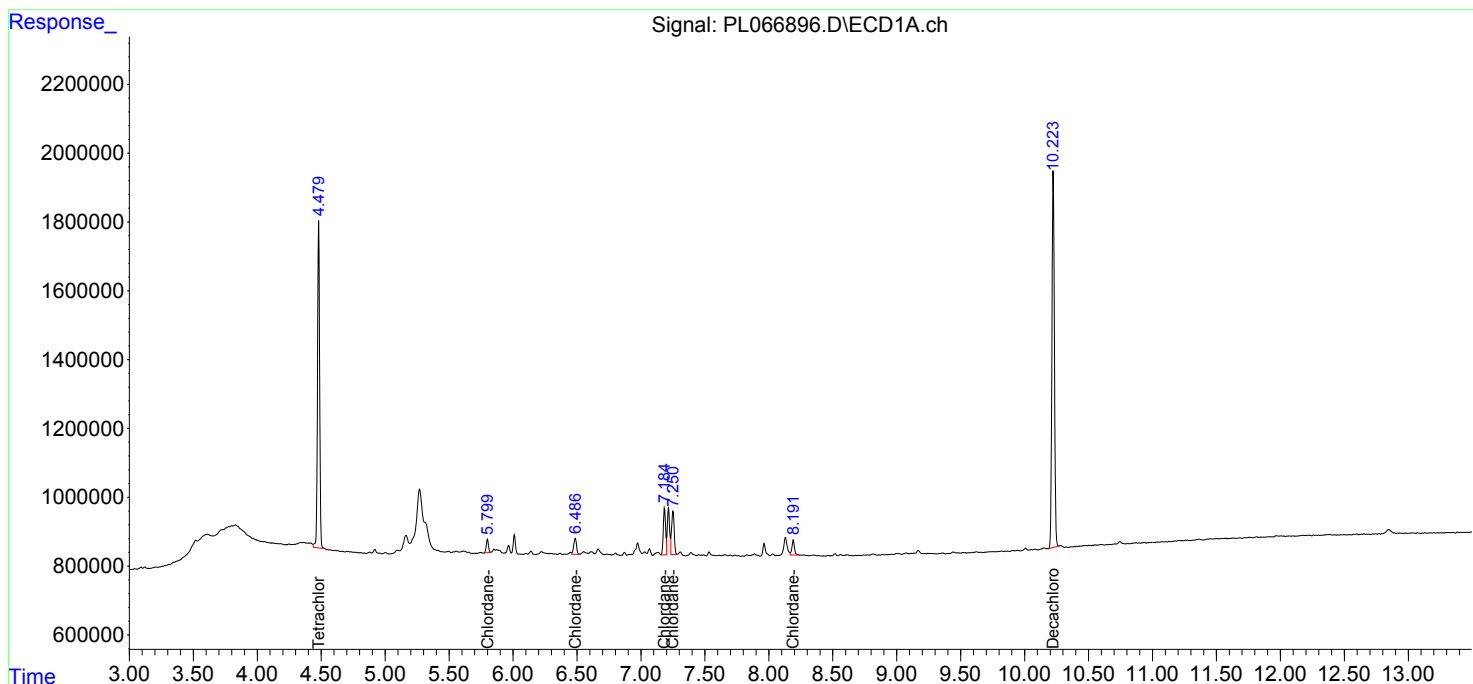
Data Path : Z:\pestpcbsrv\HPCHEM1\ECD_L\Data\PL052621\
 Data File : PL066896.D
 Signal(s) : Signal #1: ECD1A.ch Signal #2: ECD2B.ch
 Acq On : 26 May 2021 01:59
 Operator : AR\AJ
 Sample : M2262-03
 Misc : CHLOR MDL 25 PPB
 ALS Vial : 29 Sample Multiplier: 1

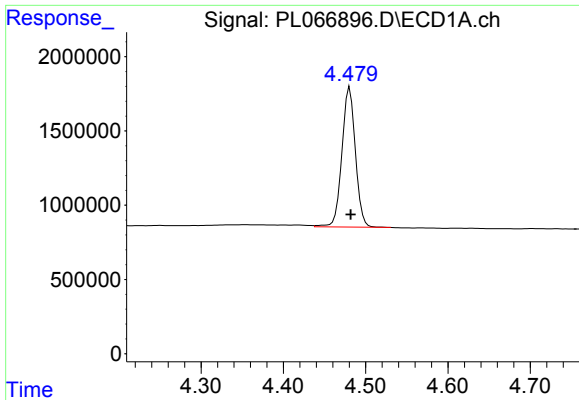
Instrument :
 ECD_L
Client Sampled :
 MDL-SOIL-03-QT2-2021

Manual Integrations
APPROVED
 Ankita
 5/26/2021 4:08:15 PM

Integration File signal 1: autoint1.e
 Integration File signal 2: autoint2.e
 Quant Time: May 26 08:32:37 2021
 Quant Method : Z:\pestpcbsrv\HPCHEM1\ECD_L\methods\PL052421.M
 Quant Title : GC Extractables
 QLast Update : Tue May 25 06:06:45 2021
 Response via : Initial Calibration
 Integrator: ChemStation

Volume Inj. : 1 µl
 Signal #1 Phase : ZB-MR2 Signal #2 Phase: ZB-MR1
 Signal #1 Info : 30M x 0.32mm x0.2 Signal #2 Info : 30M x 0.32mm x0.5µm

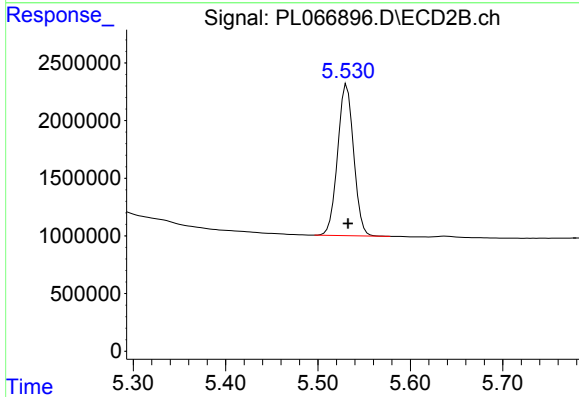




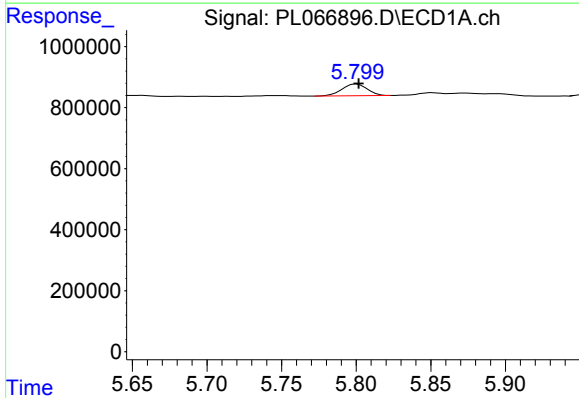
#1 Tetrachloro-m-xylene
 R.T.: 4.481 min
 Delta R.T.: -0.001 min
 Response: 10739355
 Conc: 18.72 ng/ml

Instrument :
 ECD_L
ClientSampled :
 MDL-SOIL-03-QT2-2021

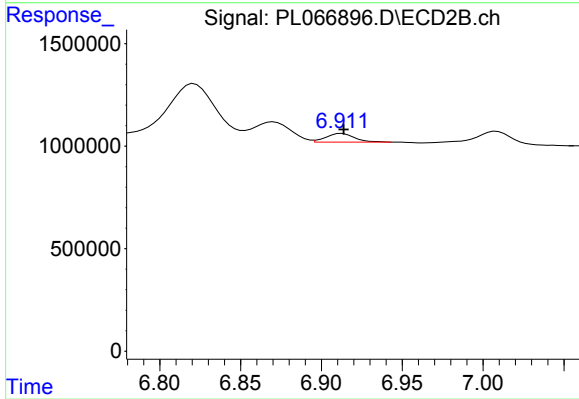
Manual Integrations
APPROVED
 Ankita
 5/26/2021 4:08:15 PM



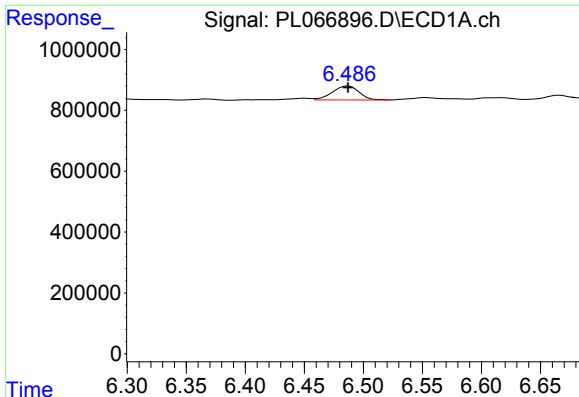
#1 Tetrachloro-m-xylene
 R.T.: 5.531 min
 Delta R.T.: -0.001 min
 Response: 15799529
 Conc: 18.39 ng/ml



#23 Chlordane-1
 R.T.: 5.800 min
 Delta R.T.: -0.001 min
 Response: 453528
 Conc: 20.71 ng/ml



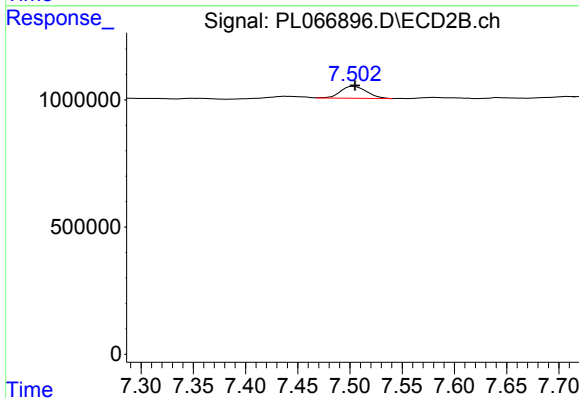
#23 Chlordane-1
 R.T.: 6.911 min
 Delta R.T.: -0.002 min
 Response: 512519
 Conc: 17.02 ng/ml m



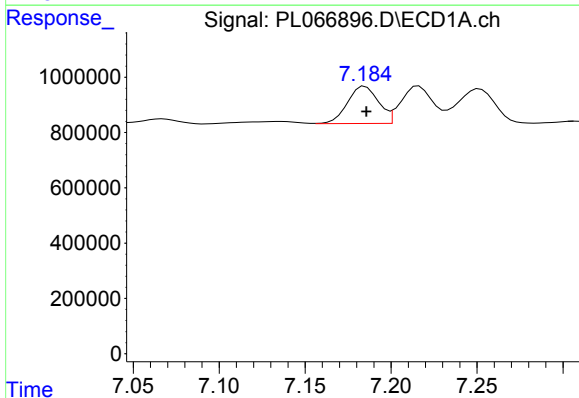
#24 Chlordane-2
 R.T.: 6.487 min
 Delta R.T.: 0.000 min
 Response: 723027
 Conc: 23.97 ng/ml

Instrument :
 ECD_L
ClientSampleId :
 MDL-SOIL-03-QT2-2021

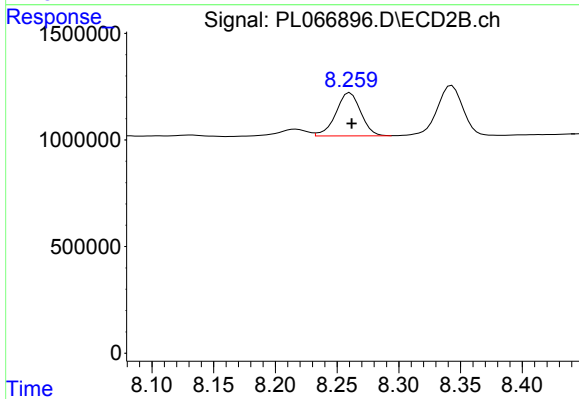
Manual Integrations
APPROVED
 Ankita
 5/26/2021 4:08:15 PM



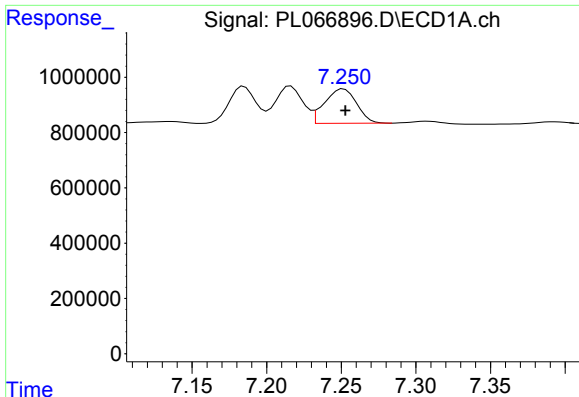
#24 Chlordane-2
 R.T.: 7.502 min
 Delta R.T.: -0.003 min
 Response: 829806
 Conc: 21.48 ng/ml m



#25 Chlordane-3
 R.T.: 7.185 min
 Delta R.T.: 0.000 min
 Response: 1684935
 Conc: 20.91 ng/ml



#25 Chlordane-3
 R.T.: 8.259 min
 Delta R.T.: -0.003 min
 Response: 2839887
 Conc: 21.55 ng/ml m



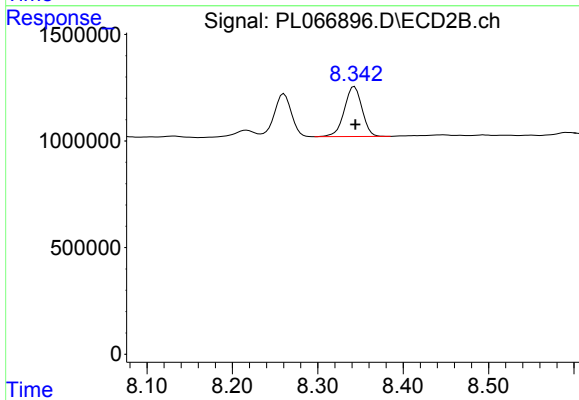
#26 Chlordane-4

R.T.: 7.252 min
 Delta R.T.: -0.001 min
 Response: 1847368
 Conc: 21.24 ng/ml

Instrument :
 ECD_L
 ClientSampleId :
 MDL-SOIL-03-QT2-2021

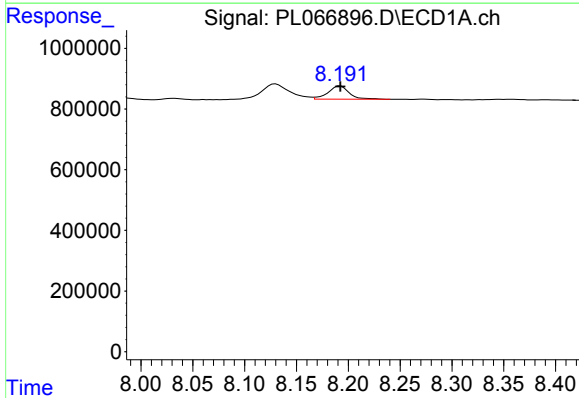
Manual Integrations
 APPROVED

Ankita
 5/26/2021 4:08:15 PM



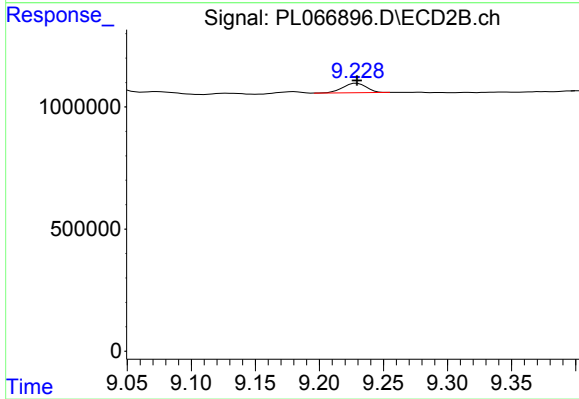
#26 Chlordane-4

R.T.: 8.343 min
 Delta R.T.: 0.000 min
 Response: 3381276
 Conc: 21.23 ng/ml



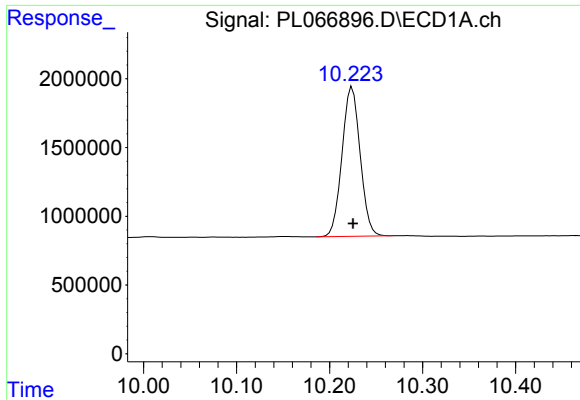
#27 Chlordane-5

R.T.: 8.192 min
 Delta R.T.: 0.000 min
 Response: 623077
 Conc: 21.35 ng/ml



#27 Chlordane-5

R.T.: 9.228 min
 Delta R.T.: -0.002 min
 Response: 498605
 Conc: 17.65 ng/ml m



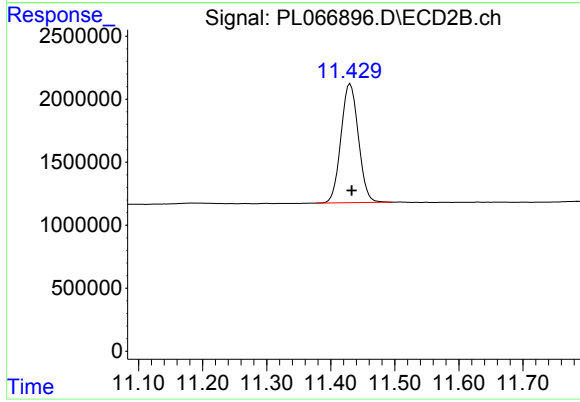
#28 Decachlorobiphenyl

R.T.: 10.224 min
Delta R.T.: 0.000 min
Response: 14722679
Conc: 19.80 ng/ml

Instrument :
ECD_L
ClientSampleId :
MDL-SOIL-03-QT2-2021

Manual Integrations
APPROVED

Ankita
5/26/2021 4:08:15 PM



#28 Decachlorobiphenyl

R.T.: 11.430 min
Delta R.T.: -0.002 min
Response: 17787684
Conc: 20.64 ng/ml