

Data Path : Z:\pestpcbsrv\HPCHEM1\ECD\_L\Data\PL052623\  
 Data File : PL083032.D  
 Signal(s) : Signal #1: ECD1A.ch Signal #2: ECD2B.ch  
 Acq On : 26 May 2023 08:24  
 Operator : AR\AJ  
 Sample : PEM  
 Misc :  
 ALS Vial : 3 Sample Multiplier: 1

Instrument :  
 ECD\_L  
 ClientSampleId :  
 PEM

Manual Integrations  
**APPROVED**

Reviewed By :Abdul Mirza 05/30/2023  
 Supervised By :Ankita Jodhani 05/30/2023

Integration File signal 1: autoint1.e  
 Integration File signal 2: autoint2.e  
 Quant Time: May 26 21:27:39 2023  
 Quant Method : Z:\pestpcbsrv\HPCHEM1\ECD\_L\methods\PL051923.M  
 Quant Title : GC Extractables  
 QLast Update : Sat May 20 04:58:53 2023  
 Response via : Initial Calibration  
 Integrator: ChemStation

Volume Inj. : 1 µl  
 Signal #1 Phase : ZB-MR2 Signal #2 Phase: ZB-MR1  
 Signal #1 Info : 30M x 0.32mm x0.2 Signal #2 Info : 30M x 0.32mm x0.5µm

| Compound                    | RT#1  | RT#2  | Resp#1   | Resp#2   | ng/ml   | ng/ml   |
|-----------------------------|-------|-------|----------|----------|---------|---------|
| -----                       |       |       |          |          |         |         |
| System Monitoring Compounds |       |       |          |          |         |         |
| 1) SA Tetrachlo...          | 3.319 | 2.638 | 57367864 | 46992922 | 19.519  | 18.101  |
| 28) SA Decachlor...         | 8.734 | 7.742 | 40384653 | 45539326 | 19.255  | 18.314  |
| Target Compounds            |       |       |          |          |         |         |
| 2) A alpha-BHC              | 3.768 | 3.133 | 39229672 | 29528539 | 8.837   | 7.913   |
| 3) MA gamma-BHC...          | 4.096 | 3.460 | 38274083 | 28299759 | 9.238   | 8.490   |
| 6) B beta-BHC               | 4.299 | 3.761 | 18701828 | 14866893 | 9.933   | 10.396  |
| 14) MA Endrin               | 6.318 | 5.473 | 112.5E6  | 103.7E6  | 41.848  | 40.858  |
| 16) A 4,4'-DDD              | 6.462 | 5.623 | 9390239  | 7142055  | 4.321   | 3.714   |
| 17) MA 4,4'-DDT             | 6.774 | 5.872 | 206.8E6  | 193.8E6  | 82.597  | 86.858  |
| 18) B Endrin al...          | 6.671 | 5.949 | 3731493  | 4035219  | 1.856   | 2.041   |
| 20) A Methoxychlor          | 7.255 | 6.451 | 279.3E6  | 261.7E6  | 211.239 | 205.749 |
| 21) B Endrin ke...          | 7.383 | 6.675 | 7593919  | 7807395  | 2.977m  | 2.888   |

(f)=RT Delta > 1/2 Window (#)=Amounts differ by > 25% (m)=manual int.

Data Path : Z:\pestpcbsrv\HPCHEM1\ECD\_L\Data\PL052623\  
 Data File : PL083032.D  
 Signal(s) : Signal #1: ECD1A.ch Signal #2: ECD2B.ch  
 Acq On : 26 May 2023 08:24  
 Operator : AR\AJ  
 Sample : PEM  
 Misc :  
 ALS Vial : 3 Sample Multiplier: 1

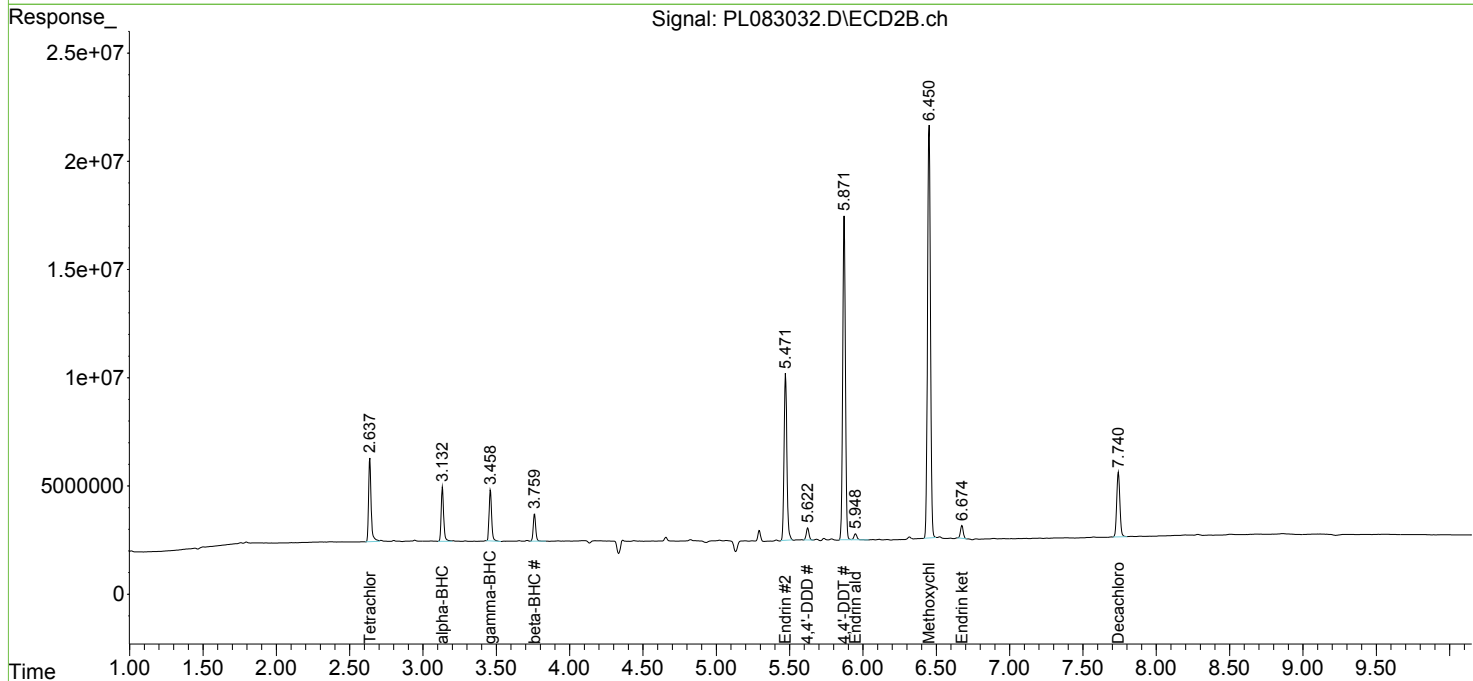
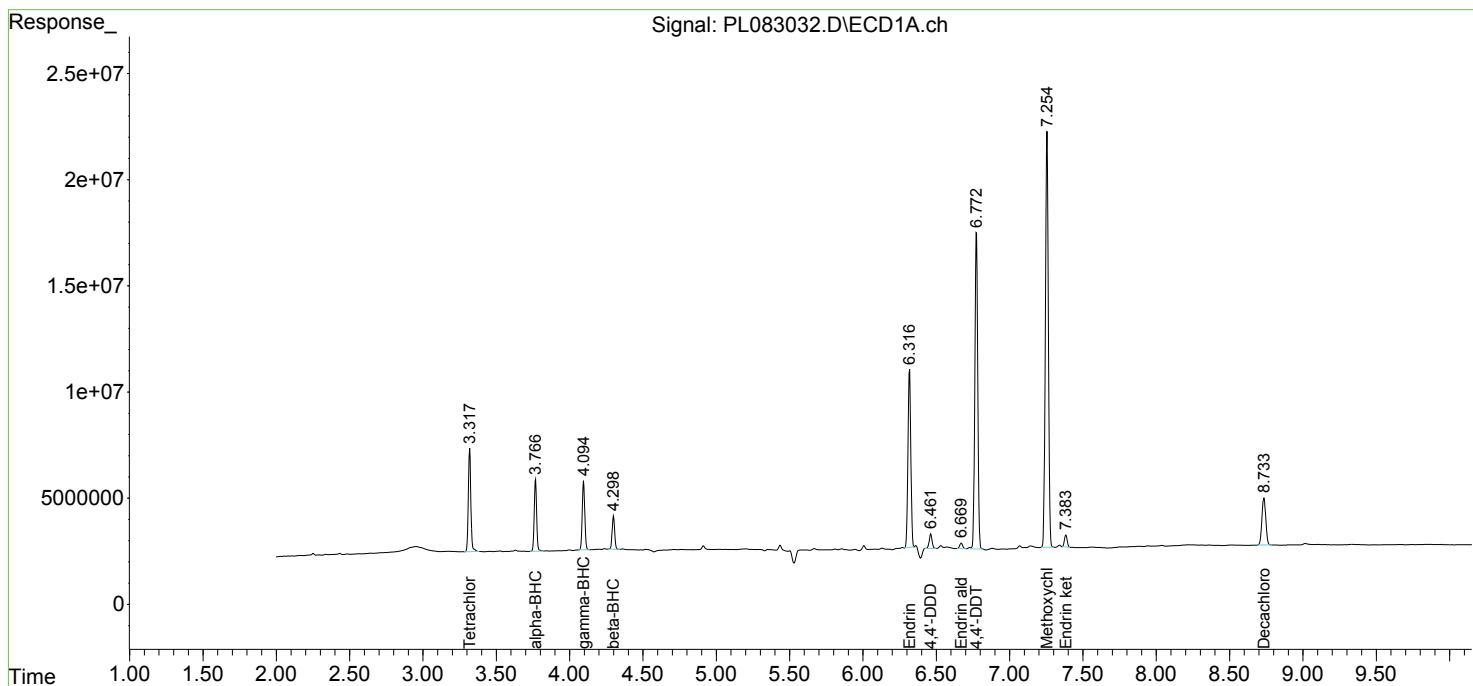
**Instrument :**  
 ECD\_L  
**ClientSampleId :**  
 PEM

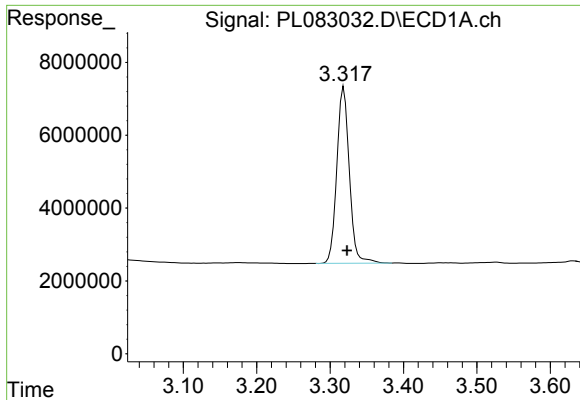
**Manual Integrations**  
**APPROVED**

Reviewed By :Abdul Mirza 05/30/2023  
 Supervised By :Ankita Jodhani 05/30/2023

Integration File signal 1: autoint1.e  
 Integration File signal 2: autoint2.e  
 Quant Time: May 26 21:27:39 2023  
 Quant Method : Z:\pestpcbsrv\HPCHEM1\ECD\_L\methods\PL051923.M  
 Quant Title : GC Extractables  
 QLast Update : Sat May 20 04:58:53 2023  
 Response via : Initial Calibration  
 Integrator: ChemStation

Volume Inj. : 1 µl  
 Signal #1 Phase : ZB-MR2 Signal #2 Phase: ZB-MR1  
 Signal #1 Info : 30M x 0.32mm x0.2 Signal #2 Info : 30M x 0.32mm x0.5µm



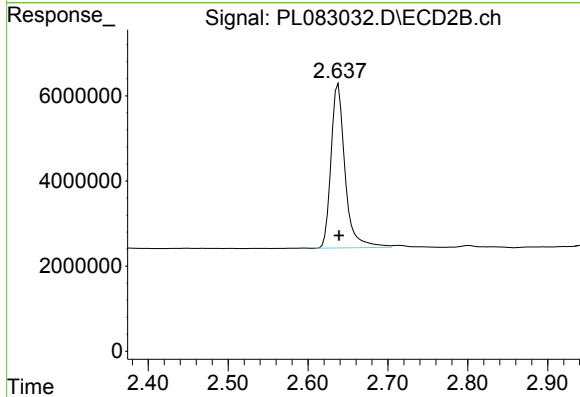


#1 Tetrachloro-m-xylene

R.T.: 3.319 min  
 Delta R.T.: -0.004 min  
 Response: 57367864  
 Conc: 19.52 ng/ml

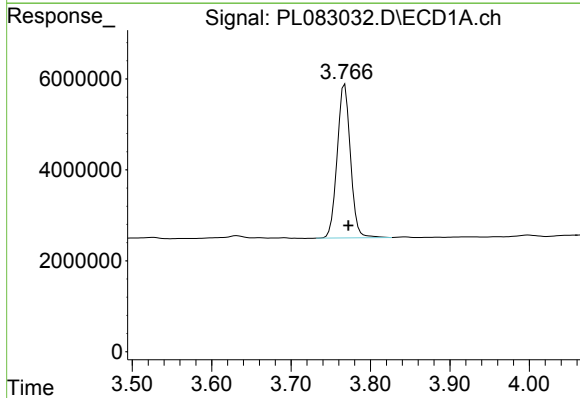
Instrument :  
 ECD\_L  
 ClientSampleId :  
 PEM

**Manual Integrations**  
**APPROVED**  
 Reviewed By :Abdul Mirza 05/30/2023  
 Supervised By :Ankita Jodhani 05/30/2023



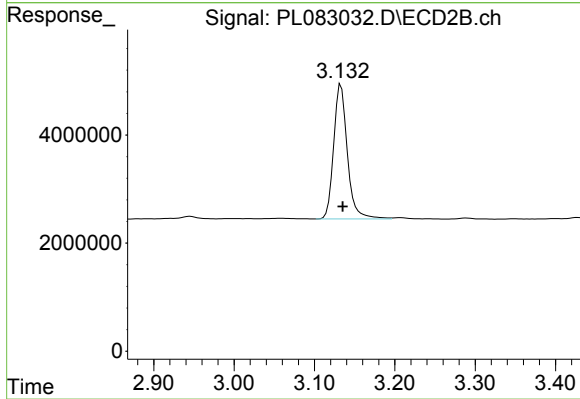
#1 Tetrachloro-m-xylene

R.T.: 2.638 min  
 Delta R.T.: -0.001 min  
 Response: 46992922  
 Conc: 18.10 ng/ml



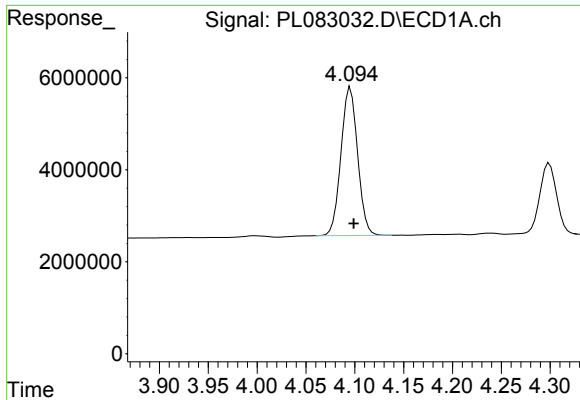
#2 alpha-BHC

R.T.: 3.768 min  
 Delta R.T.: -0.004 min  
 Response: 39229672  
 Conc: 8.84 ng/ml



#2 alpha-BHC

R.T.: 3.133 min  
 Delta R.T.: -0.002 min  
 Response: 29528539  
 Conc: 7.91 ng/ml

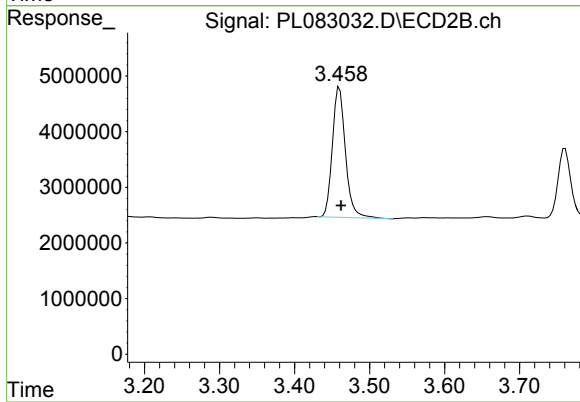


#3 gamma-BHC (Lindane)  
 R.T.: 4.096 min  
 Delta R.T.: -0.003 min  
 Response: 38274083  
 Conc: 9.24 ng/ml

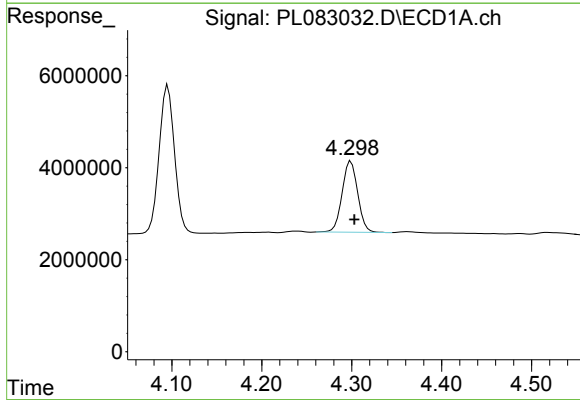
Instrument :  
 ECD\_L  
 ClientSampleId :  
 PEM

Manual Integrations  
 APPROVED

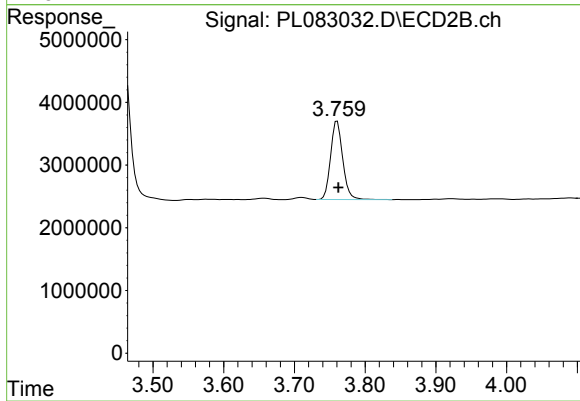
Reviewed By :Abdul Mirza 05/30/2023  
 Supervised By :Ankita Jodhani 05/30/2023



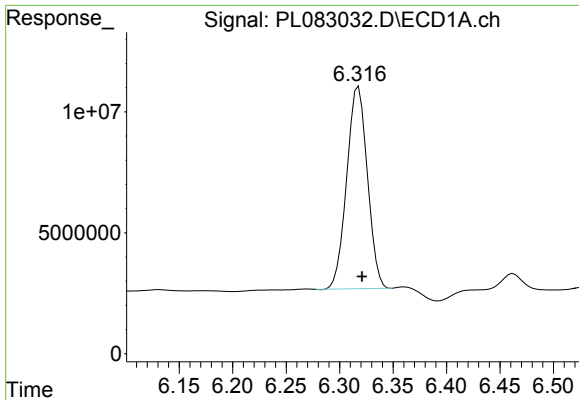
#3 gamma-BHC (Lindane)  
 R.T.: 3.460 min  
 Delta R.T.: -0.002 min  
 Response: 28299759  
 Conc: 8.49 ng/ml



#6 beta-BHC  
 R.T.: 4.299 min  
 Delta R.T.: -0.004 min  
 Response: 18701828  
 Conc: 9.93 ng/ml



#6 beta-BHC  
 R.T.: 3.761 min  
 Delta R.T.: -0.002 min  
 Response: 14866893  
 Conc: 10.40 ng/ml



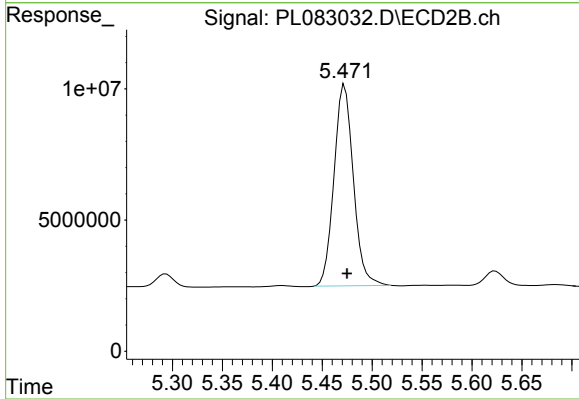
#14 Endrin

R.T.: 6.318 min  
 Delta R.T.: -0.003 min  
 Response: 112456749  
 Conc: 41.85 ng/ml

Instrument :  
 ECD\_L  
 ClientSampleId :  
 PEM

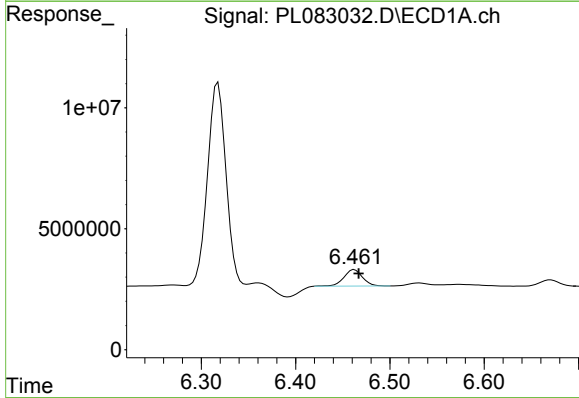
Manual Integrations  
 APPROVED

Reviewed By :Abdul Mirza 05/30/2023  
 Supervised By :Ankita Jodhani 05/30/2023



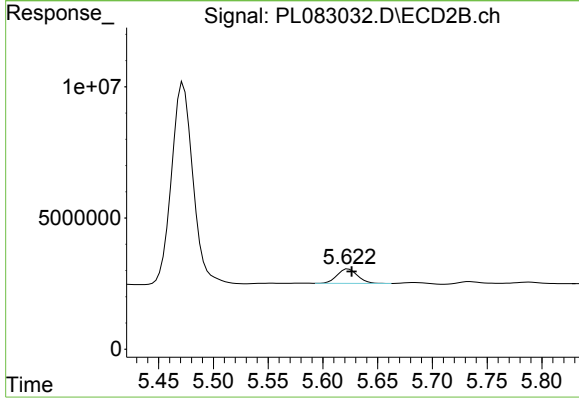
#14 Endrin

R.T.: 5.473 min  
 Delta R.T.: -0.002 min  
 Response: 103655773  
 Conc: 40.86 ng/ml



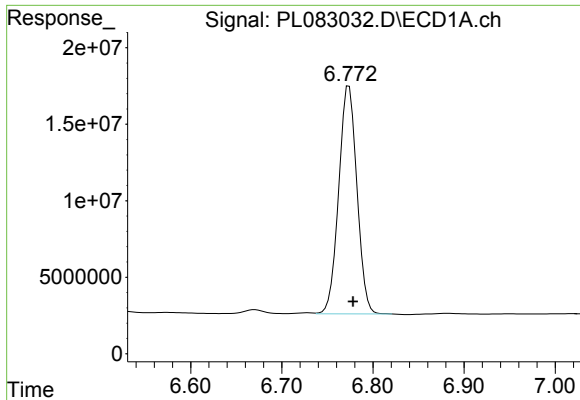
#16 4,4'-DDD

R.T.: 6.462 min  
 Delta R.T.: -0.005 min  
 Response: 9390239  
 Conc: 4.32 ng/ml



#16 4,4'-DDD

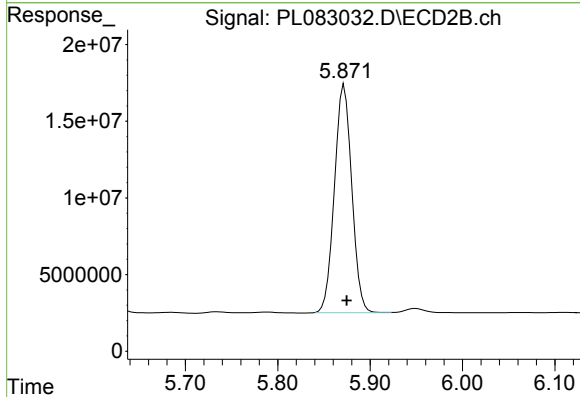
R.T.: 5.623 min  
 Delta R.T.: -0.003 min  
 Response: 7142055  
 Conc: 3.71 ng/ml



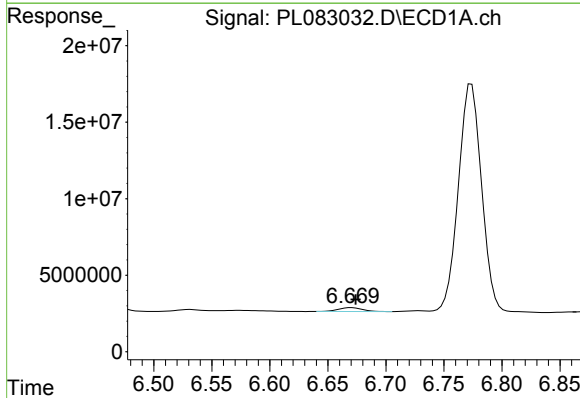
#17 4,4'-DDT  
 R.T.: 6.774 min  
 Delta R.T.: -0.004 min  
 Response: 206754119  
 Conc: 82.60 ng/ml

Instrument :  
 ECD\_L  
 ClientSampleId :  
 PEM

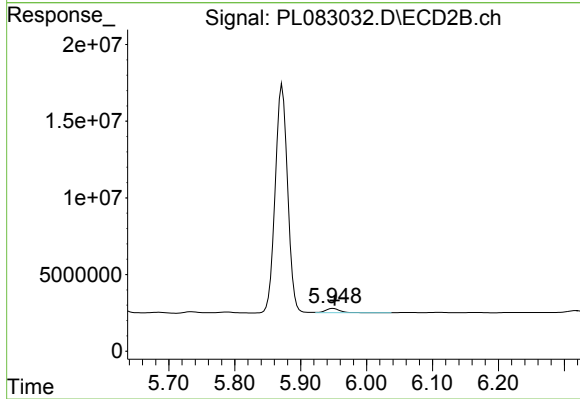
**Manual Integrations**  
**APPROVED**  
 Reviewed By :Abdul Mirza 05/30/2023  
 Supervised By :Ankita Jodhani 05/30/2023



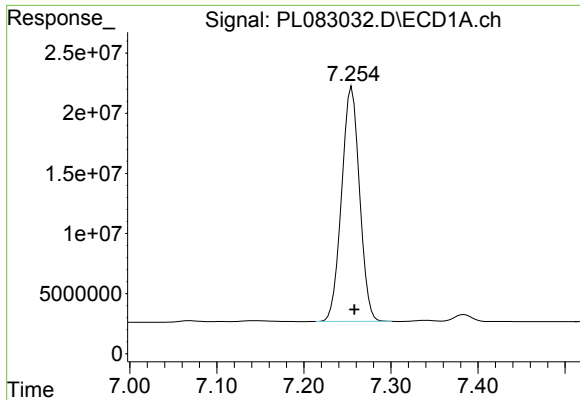
#17 4,4'-DDT  
 R.T.: 5.872 min  
 Delta R.T.: -0.003 min  
 Response: 193783172  
 Conc: 86.86 ng/ml



#18 Endrin aldehyde  
 R.T.: 6.671 min  
 Delta R.T.: -0.003 min  
 Response: 3731493  
 Conc: 1.86 ng/ml



#18 Endrin aldehyde  
 R.T.: 5.949 min  
 Delta R.T.: -0.002 min  
 Response: 4035219  
 Conc: 2.04 ng/ml



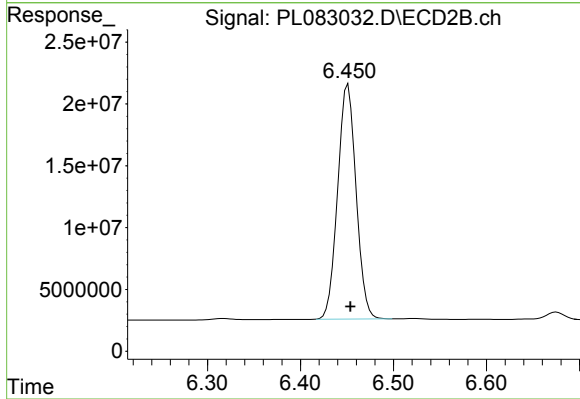
#20 Methoxychlor

R.T.: 7.255 min  
 Delta R.T.: -0.003 min  
 Response: 279337715  
 Conc: 211.24 ng/ml

Instrument :  
 ECD\_L  
 ClientSampleId :  
 PEM

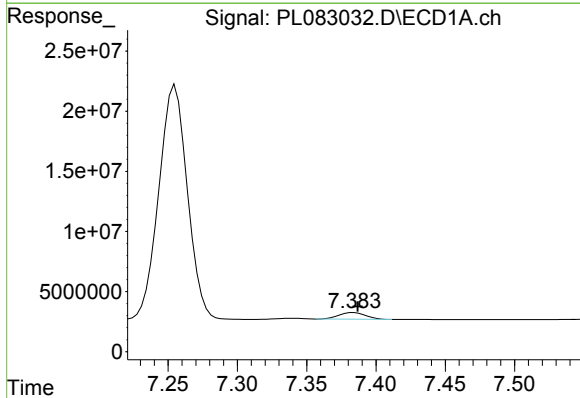
Manual Integrations  
 APPROVED

Reviewed By :Abdul Mirza 05/30/2023  
 Supervised By :Ankita Jodhani 05/30/2023



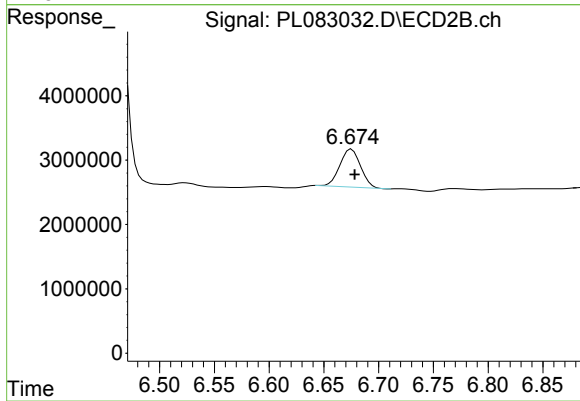
#20 Methoxychlor

R.T.: 6.451 min  
 Delta R.T.: -0.003 min  
 Response: 261660216  
 Conc: 205.75 ng/ml



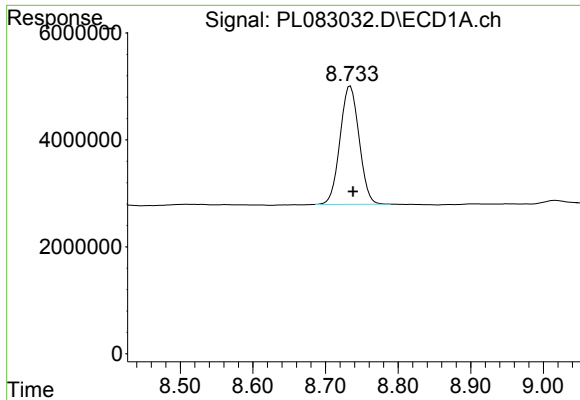
#21 Endrin ketone

R.T.: 7.383 min  
 Delta R.T.: -0.004 min  
 Response: 7593919  
 Conc: 2.98 ng/ml m



#21 Endrin ketone

R.T.: 6.675 min  
 Delta R.T.: -0.003 min  
 Response: 7807395  
 Conc: 2.89 ng/ml

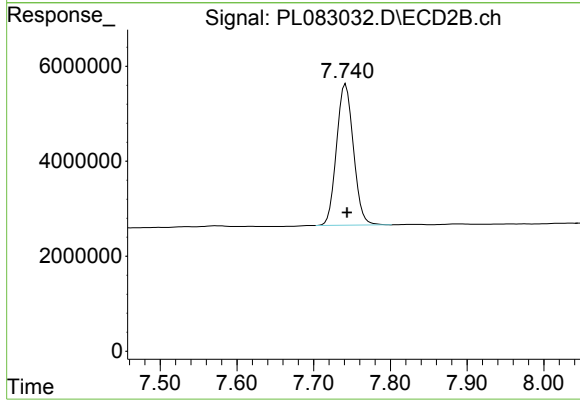


#28 Decachlorobiphenyl  
 R.T.: 8.734 min  
 Delta R.T.: -0.004 min  
 Response: 40384653  
 Conc: 19.26 ng/ml

Instrument :  
 ECD\_L  
 ClientSampleId :  
 PEM

Manual Integrations  
 APPROVED

Reviewed By :Abdul Mirza 05/30/2023  
 Supervised By :Ankita Jodhani 05/30/2023



#28 Decachlorobiphenyl  
 R.T.: 7.742 min  
 Delta R.T.: -0.002 min  
 Response: 45539326  
 Conc: 18.31 ng/ml