

Data Path : Z:\pestpcbsrv\HPCHEM1\ECD\_L\Data\PL052623\  
 Data File : PL083033.D  
 Signal(s) : Signal #1: ECD1A.ch Signal #2: ECD2B.ch  
 Acq On : 26 May 2023 08:45  
 Operator : AR\AJ  
 Sample : PSTDCCC050  
 Misc :  
 ALS Vial : 4 Sample Multiplier: 1

Instrument :  
 ECD\_L  
 ClientSampleId :  
 PSTDCCC050

Manual Integrations  
 APPROVED

Reviewed By :Abdul Mirza 05/30/2023  
 Supervised By :Ankita Jodhani 05/30/2023

Integration File signal 1: autoint1.e  
 Integration File signal 2: autoint2.e  
 Quant Time: May 26 21:28:54 2023  
 Quant Method : Z:\pestpcbsrv\HPCHEM1\ECD\_L\methods\PL051923.M  
 Quant Title : GC Extractables  
 QLast Update : Sat May 20 04:58:53 2023  
 Response via : Initial Calibration  
 Integrator: ChemStation

Volume Inj. : 1 µl  
 Signal #1 Phase : ZB-MR2 Signal #2 Phase: ZB-MR1  
 Signal #1 Info : 30M x 0.32mm x0.2 Signal #2 Info : 30M x 0.32mm x0.5µm

	Compound	RT#1	RT#2	Resp#1	Resp#2	ng/ml	ng/ml
-----							
System Monitoring Compounds							
1)	SA Tetrachlo...	3.322	2.635	142.0E6	119.1E6	48.319	45.895
28)	SA Decachlor...	8.738	7.742	100.8E6	118.0E6	48.048	47.438
Target Compounds							
2)	A alpha-BHC	3.771	3.131	219.2E6	170.7E6	49.387	45.739
3)	MA gamma-BHC...	4.099	3.458	202.6E6	159.8E6	48.892	47.928
4)	MA Heptachlor	4.677	3.789	182.4E6	158.7E6	47.730	43.357
5)	MB Aldrin	5.013	4.065	178.5E6	155.6E6	50.734	47.837
6)	B beta-BHC	4.303	3.758	86791436	68072256	46.099	47.600
7)	B delta-BHC	4.544	3.984	202.8E6	158.3E6	58.968	48.318
8)	B Heptachlo...	5.439	4.566	160.1E6	139.0E6	50.063	46.832
9)	A Endosulfan I	5.820	4.933	154.6E6	119.8E6	51.527	42.868
10)	B gamma-Chl...	5.692	4.815	161.3E6	141.4E6	50.760m	47.072
11)	B alpha-Chl...	5.770	4.877	166.1E6	139.9E6	51.766m	46.589
12)	B 4,4'-DDE	5.950	5.067	139.8E6	121.6E6	50.704	50.070m
13)	MA Dieldrin	6.094	5.197	151.4E6	132.6E6	50.351	46.978
14)	MA Endrin	6.322	5.472	127.9E6	117.1E6	47.607	46.155
15)	B Endosulfa...	6.544	5.767	124.4E6	110.0E6	46.751	44.478m
16)	A 4,4'-DDD	6.466	5.623	120.5E6	101.6E6	55.435	52.834
17)	MA 4,4'-DDT	6.777	5.871	111.9E6	97311244	44.708	43.617
18)	B Endrin al...	6.673	5.948	100.7E6	89669988	50.085	45.346
19)	B Endosulfa...	6.908	6.172	126.9E6	115.2E6	49.509	47.021
20)	A Methoxychlor	7.258	6.451	60356368	55251777	45.642	43.446
21)	B Endrin ke...	7.387	6.675	130.5E6	128.4E6	51.159	47.472
22)	Mirex	7.850	6.846	101.3E6	106.1E6	48.342	45.337

(f)=RT Delta > 1/2 Window (#)=Amounts differ by > 25% (m)=manual int.

Data Path : Z:\pestpcbsrv\HPCHEM1\ECD\_L\Data\PL052623\  
 Data File : PL083033.D  
 Signal(s) : Signal #1: ECD1A.ch Signal #2: ECD2B.ch  
 Acq On : 26 May 2023 08:45  
 Operator : AR\AJ  
 Sample : PSTDCCC050  
 Misc :  
 ALS Vial : 4 Sample Multiplier: 1

**Instrument :**

ECD\_L

**ClientSampleId :**

PSTDCCC050

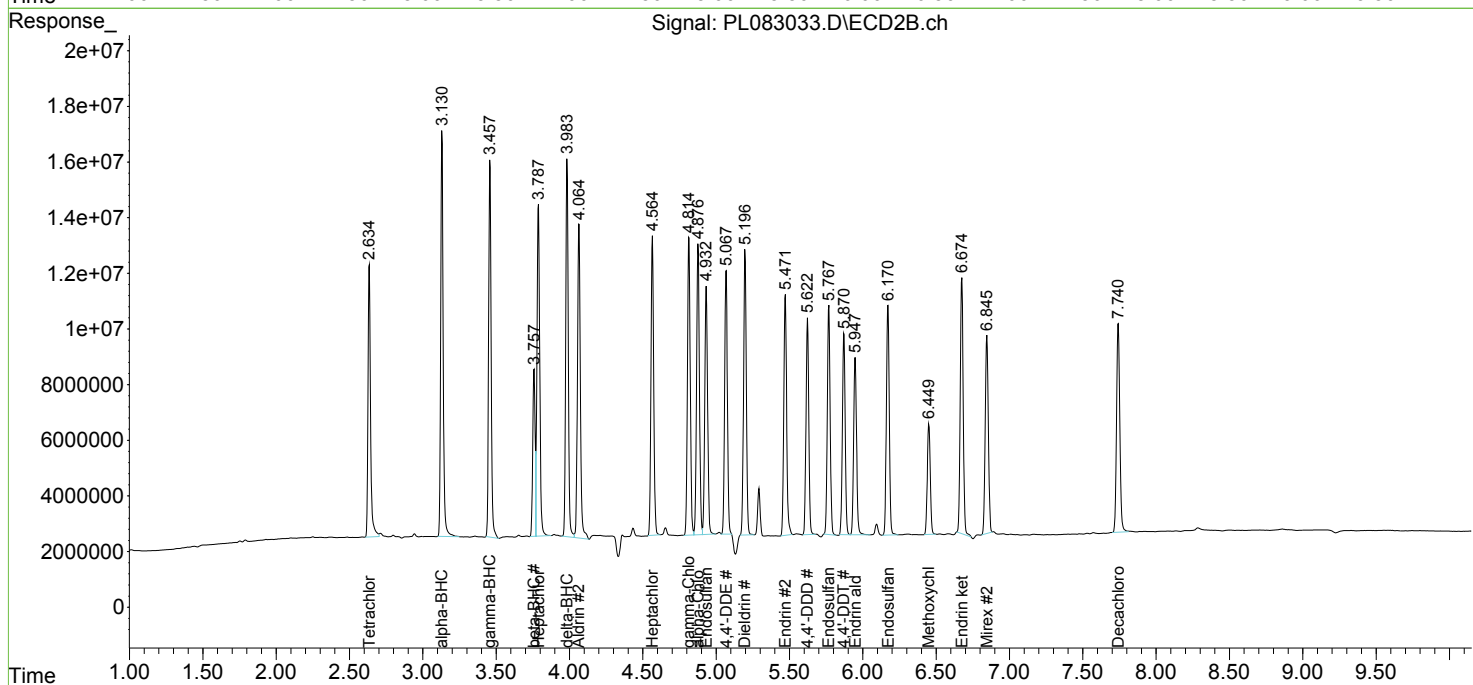
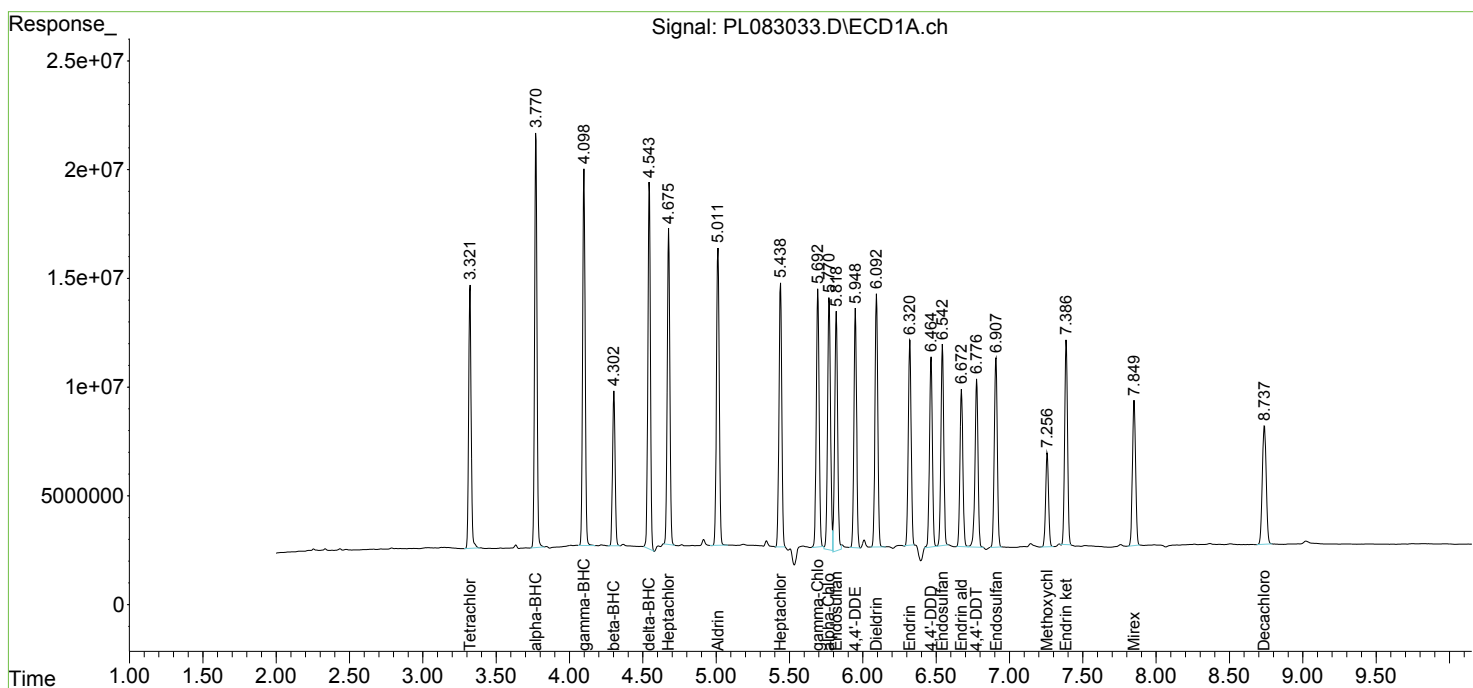
**Manual Integrations**

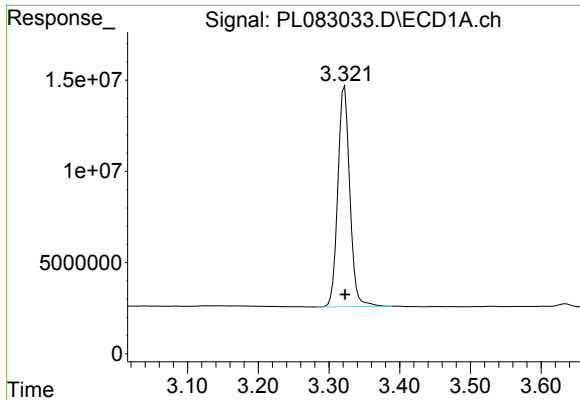
**APPROVED**

Reviewed By :Abdul Mirza 05/30/2023  
 Supervised By :Ankita Jodhani 05/30/2023

Integration File signal 1: autoint1.e  
 Integration File signal 2: autoint2.e  
 Quant Time: May 26 21:28:54 2023  
 Quant Method : Z:\pestpcbsrv\HPCHEM1\ECD\_L\methods\PL051923.M  
 Quant Title : GC Extractables  
 QLast Update : Sat May 20 04:58:53 2023  
 Response via : Initial Calibration  
 Integrator: ChemStation

Volume Inj. : 1 µl  
 Signal #1 Phase : ZB-MR2 Signal #2 Phase: ZB-MR1  
 Signal #1 Info : 30M x 0.32mm x0.2 Signal #2 Info : 30M x 0.32mm x0.5µm





#1 Tetrachloro-m-xylene

R.T.: 3.322 min  
 Delta R.T.: 0.000 min  
 Response: 142010047  
 Conc: 48.32 ng/ml

Instrument :

ECD\_L

ClientSampleId :

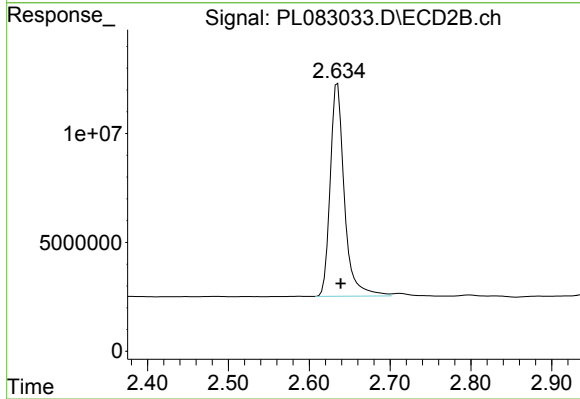
PSTDCCC050

Manual Integrations

APPROVED

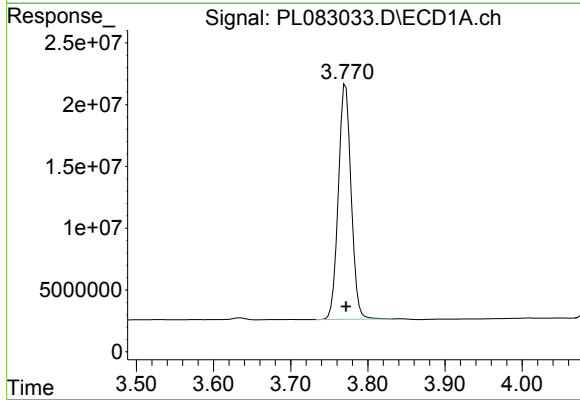
Reviewed By :Abdul Mirza 05/30/2023

Supervised By :Ankita Jodhani 05/30/2023



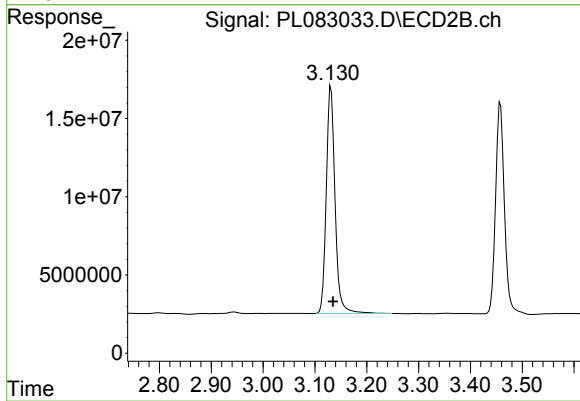
#1 Tetrachloro-m-xylene

R.T.: 2.635 min  
 Delta R.T.: -0.004 min  
 Response: 119146732  
 Conc: 45.89 ng/ml



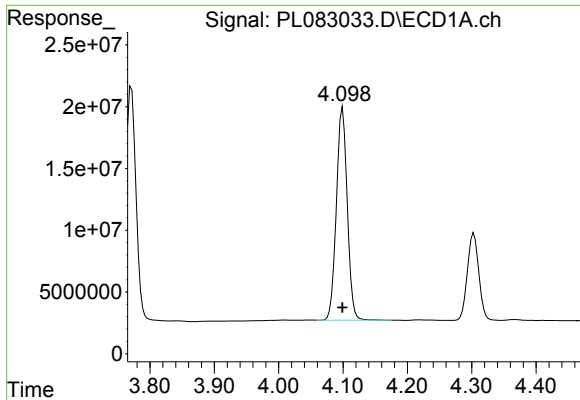
#2 alpha-BHC

R.T.: 3.771 min  
 Delta R.T.: 0.000 min  
 Response: 219241349  
 Conc: 49.39 ng/ml



#2 alpha-BHC

R.T.: 3.131 min  
 Delta R.T.: -0.004 min  
 Response: 170673710  
 Conc: 45.74 ng/ml

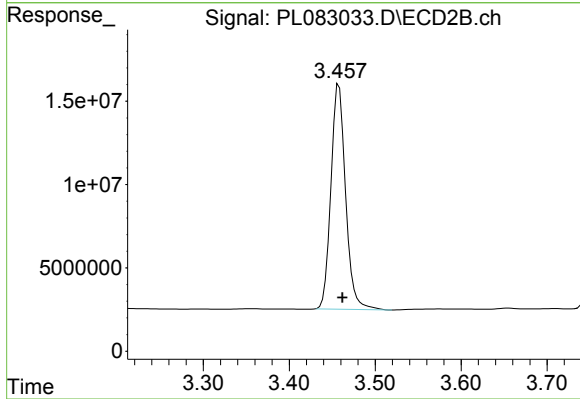


#3 gamma-BHC (Lindane)  
 R.T.: 4.099 min  
 Delta R.T.: 0.000 min  
 Response: 202555263  
 Conc: 48.89 ng/ml

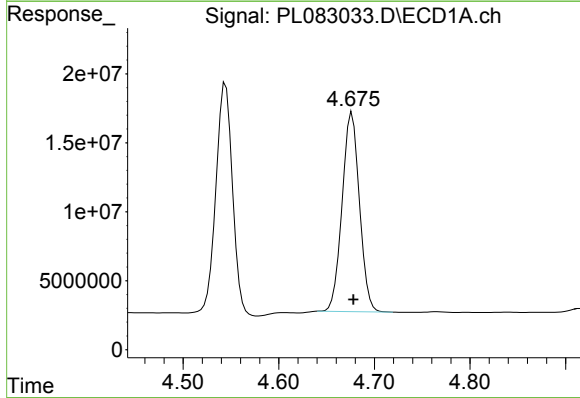
Instrument :  
 ECD\_L  
 ClientSampleId :  
 PSTDCCC050

Manual Integrations  
 APPROVED

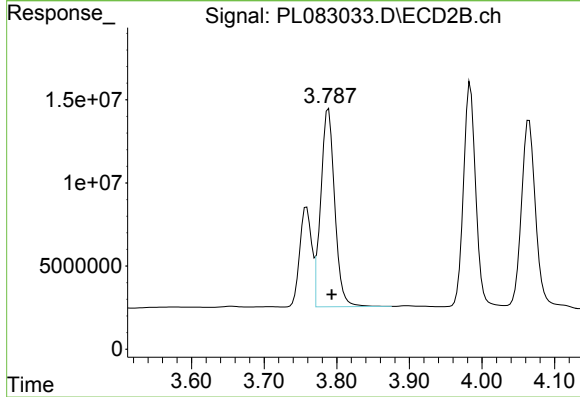
Reviewed By :Abdul Mirza 05/30/2023  
 Supervised By :Ankita Jodhani 05/30/2023



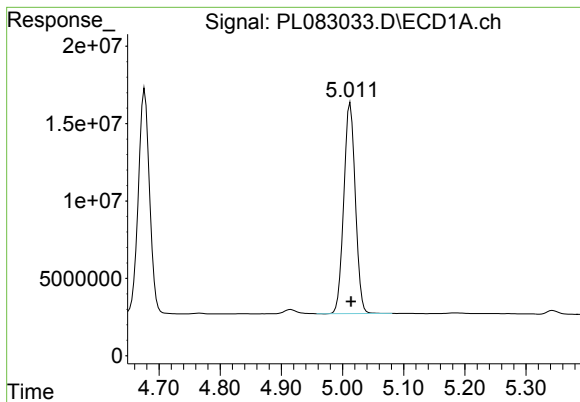
#3 gamma-BHC (Lindane)  
 R.T.: 3.458 min  
 Delta R.T.: -0.004 min  
 Response: 159758629  
 Conc: 47.93 ng/ml



#4 Heptachlor  
 R.T.: 4.677 min  
 Delta R.T.: -0.001 min  
 Response: 182444923  
 Conc: 47.73 ng/ml



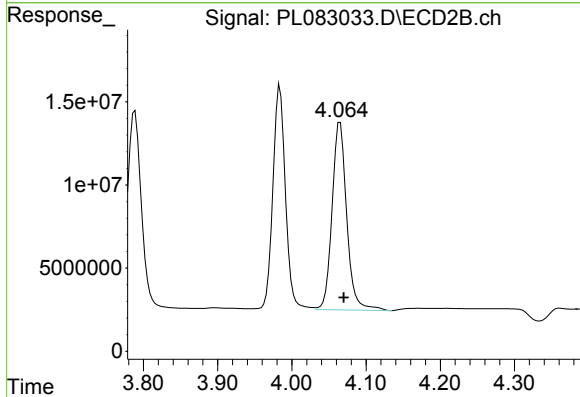
#4 Heptachlor  
 R.T.: 3.789 min  
 Delta R.T.: -0.004 min  
 Response: 158735056  
 Conc: 43.36 ng/ml



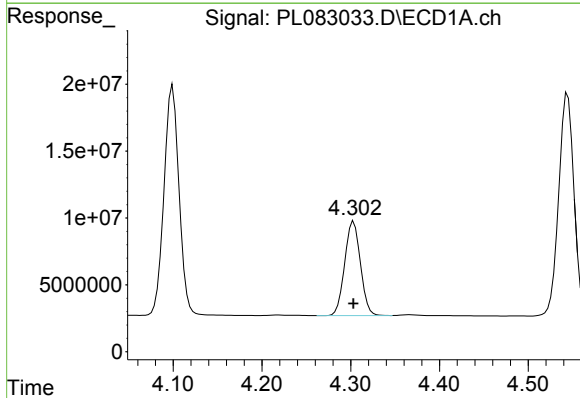
#5 Aldrin  
 R.T.: 5.013 min  
 Delta R.T.: -0.001 min  
 Response: 178489936  
 Conc: 50.73 ng/ml

Instrument : ECD\_L  
 Client Sample Id : PSTDCCC050

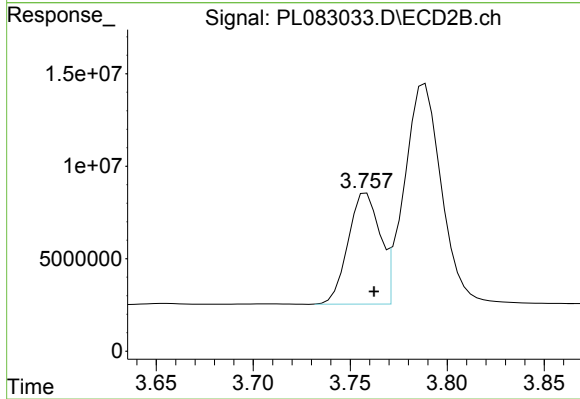
Manual Integrations  
**APPROVED**  
 Reviewed By :Abdul Mirza 05/30/2023  
 Supervised By :Ankita Jodhani 05/30/2023



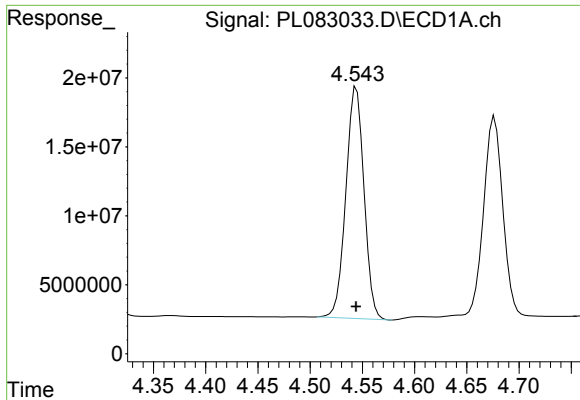
#5 Aldrin  
 R.T.: 4.065 min  
 Delta R.T.: -0.005 min  
 Response: 155643981  
 Conc: 47.84 ng/ml



#6 beta-BHC  
 R.T.: 4.303 min  
 Delta R.T.: 0.000 min  
 Response: 86791436  
 Conc: 46.10 ng/ml



#6 beta-BHC  
 R.T.: 3.758 min  
 Delta R.T.: -0.004 min  
 Response: 68072256  
 Conc: 47.60 ng/ml



#7 delta-BHC

R.T.: 4.544 min  
 Delta R.T.: 0.000 min  
 Response: 202785030  
 Conc: 58.97 ng/ml

Instrument :

ECD\_L

ClientSampleId :

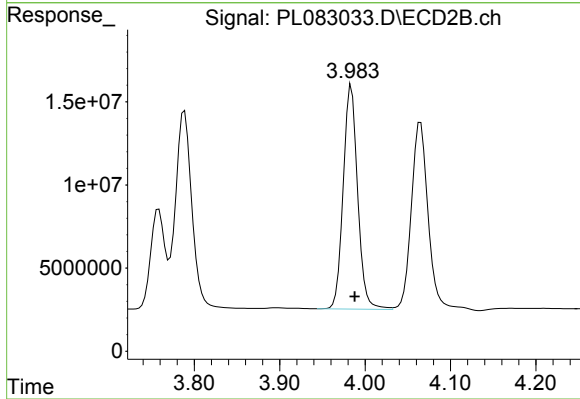
PSTDCCC050

Manual Integrations

APPROVED

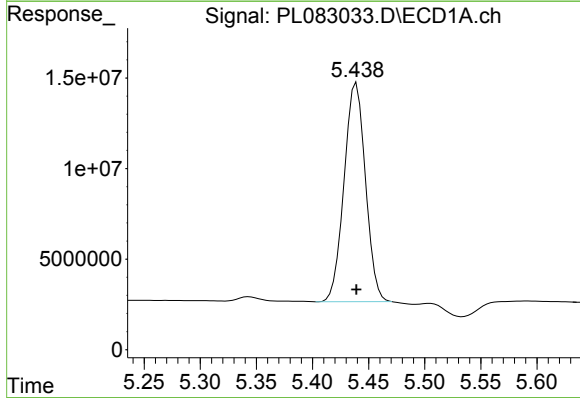
Reviewed By :Abdul Mirza 05/30/2023

Supervised By :Ankita Jodhani 05/30/2023



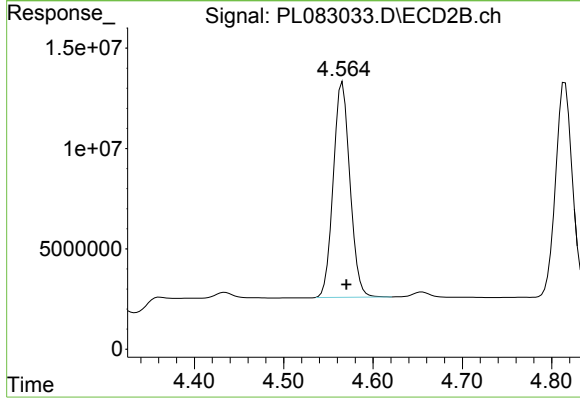
#7 delta-BHC

R.T.: 3.984 min  
 Delta R.T.: -0.004 min  
 Response: 158312412  
 Conc: 48.32 ng/ml



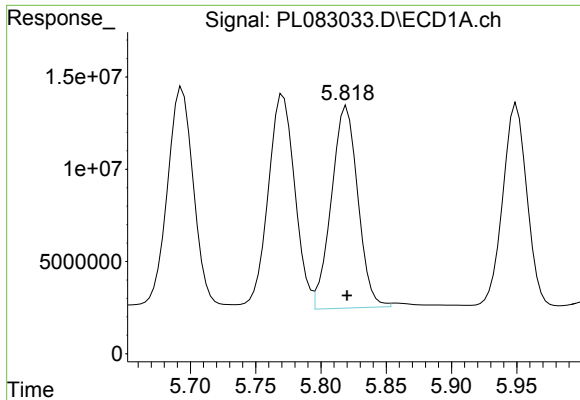
#8 Heptachlor epoxide

R.T.: 5.439 min  
 Delta R.T.: 0.000 min  
 Response: 160138009  
 Conc: 50.06 ng/ml



#8 Heptachlor epoxide

R.T.: 4.566 min  
 Delta R.T.: -0.004 min  
 Response: 138991568  
 Conc: 46.83 ng/ml



#9 Endosulfan I

R.T.: 5.820 min  
 Delta R.T.: 0.000 min  
 Response: 154610178  
 Conc: 51.53 ng/ml

Instrument :

ECD\_L

ClientSampleId :

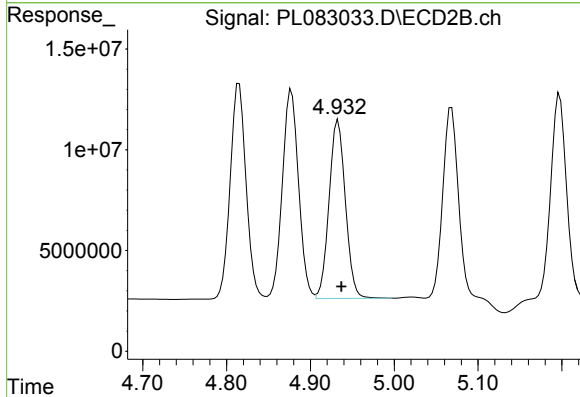
PSTDCCC050

Manual Integrations

APPROVED

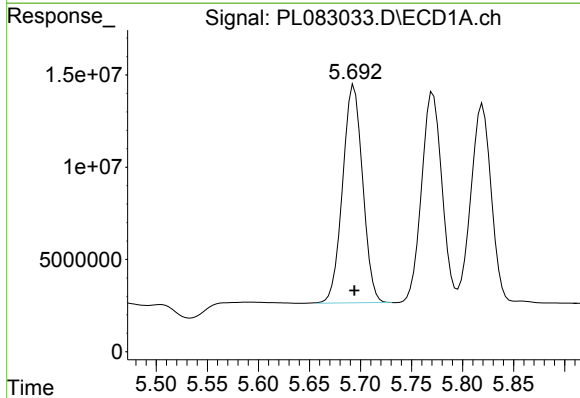
Reviewed By :Abdul Mirza 05/30/2023

Supervised By :Ankita Jodhani 05/30/2023



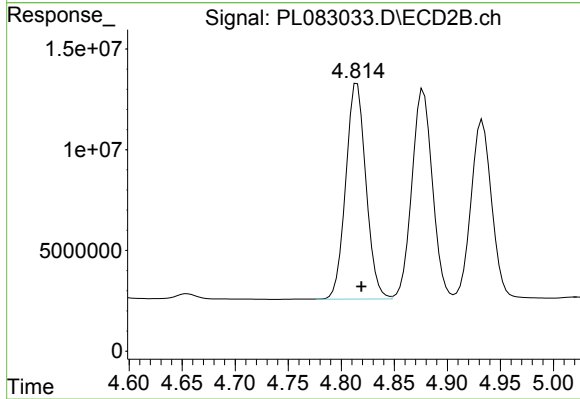
#9 Endosulfan I

R.T.: 4.933 min  
 Delta R.T.: -0.004 min  
 Response: 119788506  
 Conc: 42.87 ng/ml



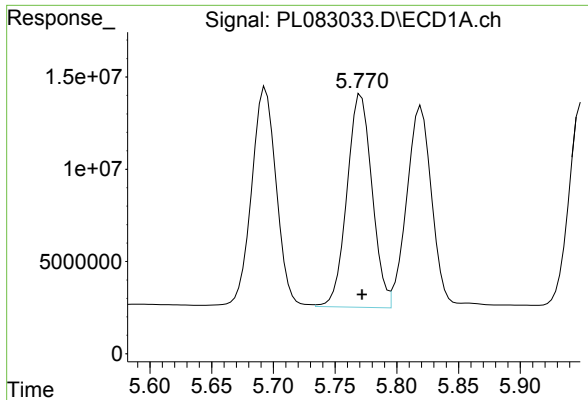
#10 gamma-Chlordane

R.T.: 5.692 min  
 Delta R.T.: -0.002 min  
 Response: 161262845  
 Conc: 50.76 ng/ml m



#10 gamma-Chlordane

R.T.: 4.815 min  
 Delta R.T.: -0.004 min  
 Response: 141374433  
 Conc: 47.07 ng/ml



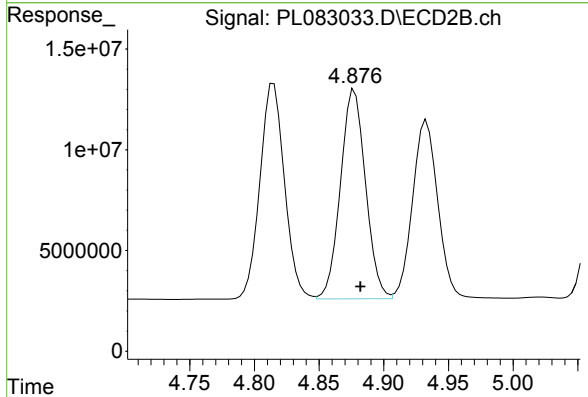
#11 alpha-Chlordane

R.T.: 5.770 min  
 Delta R.T.: -0.002 min  
 Response: 166133204  
 Conc: 51.77 ng/ml

Instrument :  
 ECD\_L  
 ClientSampleId :  
 PSTDCCC050

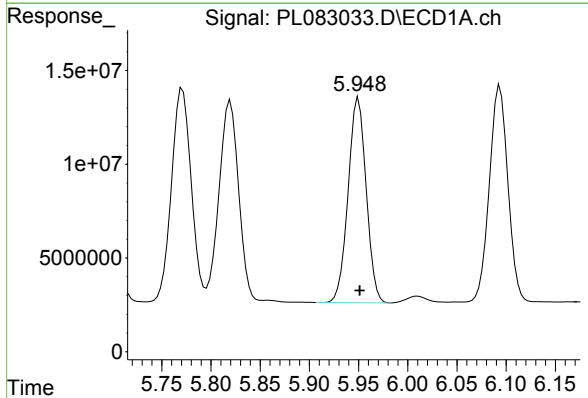
Manual Integrations  
 APPROVED

Reviewed By :Abdul Mirza 05/30/2023  
 Supervised By :Ankita Jodhani 05/30/2023



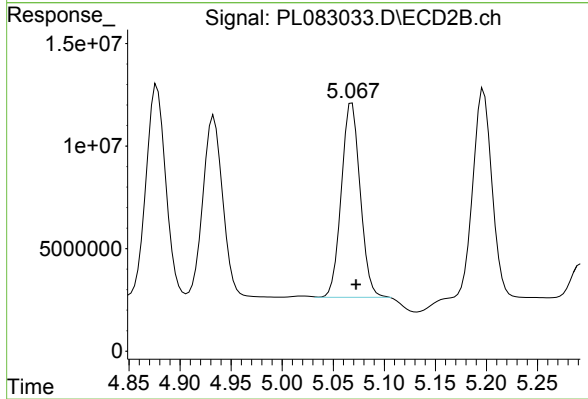
#11 alpha-Chlordane

R.T.: 4.877 min  
 Delta R.T.: -0.004 min  
 Response: 139858354  
 Conc: 46.59 ng/ml



#12 4,4'-DDE

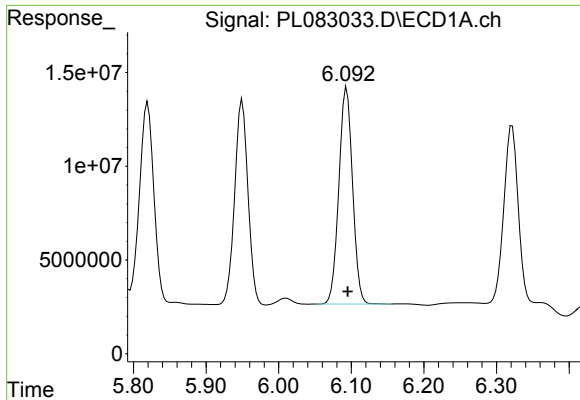
R.T.: 5.950 min  
 Delta R.T.: -0.001 min  
 Response: 139765515  
 Conc: 50.70 ng/ml



#12 4,4'-DDE

R.T.: 5.067 min  
 Delta R.T.: -0.006 min  
 Response: 121608468  
 Conc: 50.07 ng/ml m





#13 Dieldrin

R.T.: 6.094 min  
 Delta R.T.: -0.001 min  
 Response: 151449341  
 Conc: 50.35 ng/ml

Instrument :

ECD\_L

ClientSampleId :

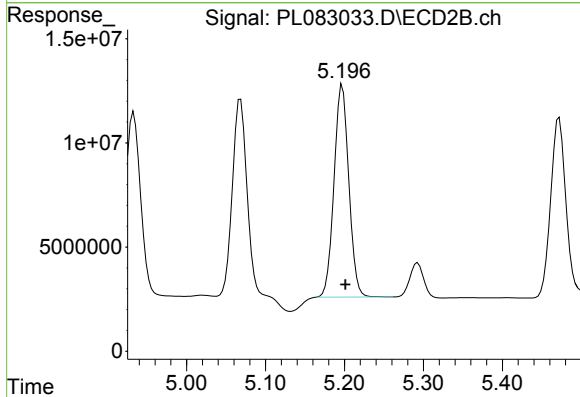
PSTDCCC050

Manual Integrations

APPROVED

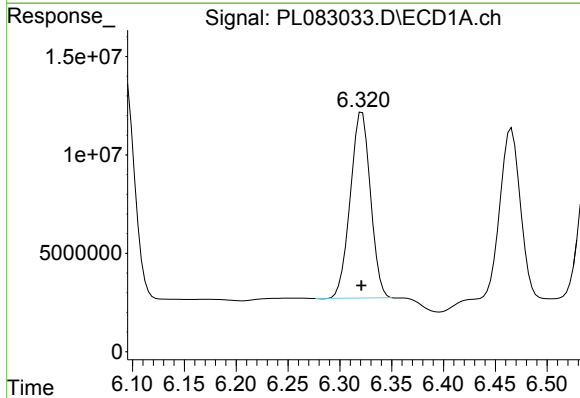
Reviewed By :Abdul Mirza 05/30/2023

Supervised By :Ankita Jodhani 05/30/2023



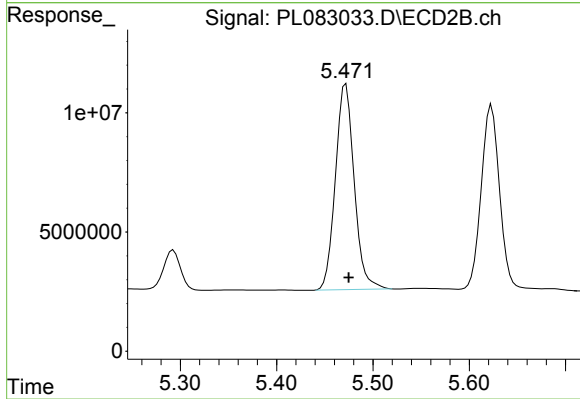
#13 Dieldrin

R.T.: 5.197 min  
 Delta R.T.: -0.004 min  
 Response: 132615572  
 Conc: 46.98 ng/ml



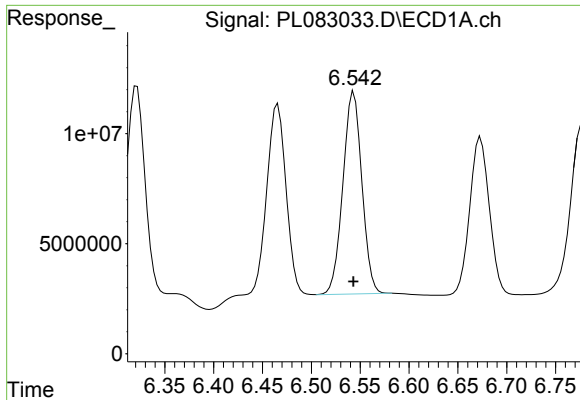
#14 Endrin

R.T.: 6.322 min  
 Delta R.T.: 0.000 min  
 Response: 127930750  
 Conc: 47.61 ng/ml



#14 Endrin

R.T.: 5.472 min  
 Delta R.T.: -0.003 min  
 Response: 117092510  
 Conc: 46.15 ng/ml



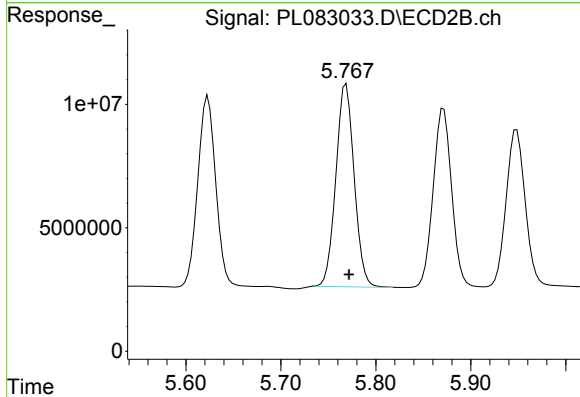
#15 Endosulfan II

R.T.: 6.544 min  
 Delta R.T.: 0.000 min  
 Response: 124359376  
 Conc: 46.75 ng/ml

Instrument :  
 ECD\_L  
 ClientSampleId :  
 PSTDCCC050

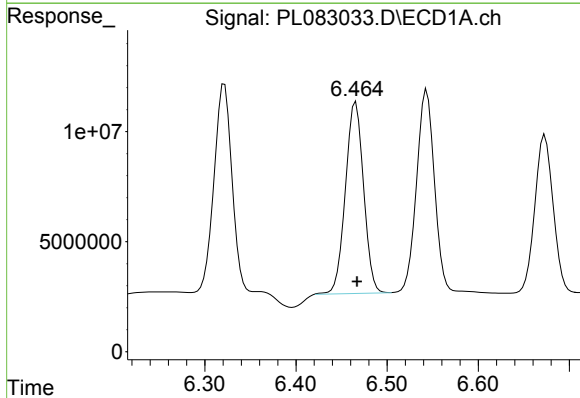
Manual Integrations  
 APPROVED

Reviewed By :Abdul Mirza 05/30/2023  
 Supervised By :Ankita Jodhani 05/30/2023



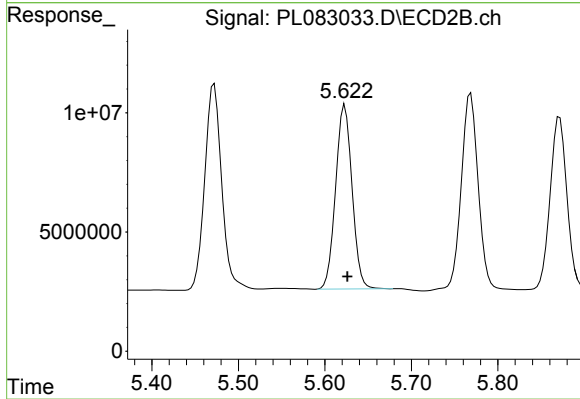
#15 Endosulfan II

R.T.: 5.767 min  
 Delta R.T.: -0.005 min  
 Response: 110047427  
 Conc: 44.48 ng/ml m



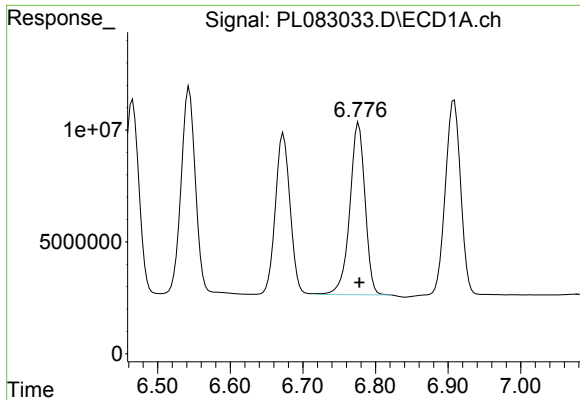
#16 4,4'-DDD

R.T.: 6.466 min  
 Delta R.T.: -0.001 min  
 Response: 120464301  
 Conc: 55.44 ng/ml



#16 4,4'-DDD

R.T.: 5.623 min  
 Delta R.T.: -0.003 min  
 Response: 101612702  
 Conc: 52.83 ng/ml



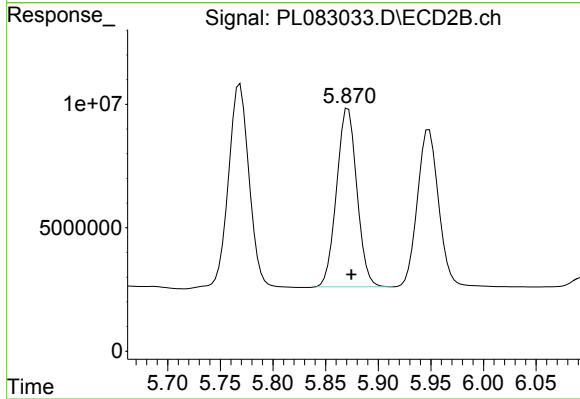
#17 4,4'-DDT

R.T.: 6.777 min  
 Delta R.T.: -0.001 min  
 Response: 111911036  
 Conc: 44.71 ng/ml

Instrument :  
 ECD\_L  
 ClientSampleId :  
 PSTDCCC050

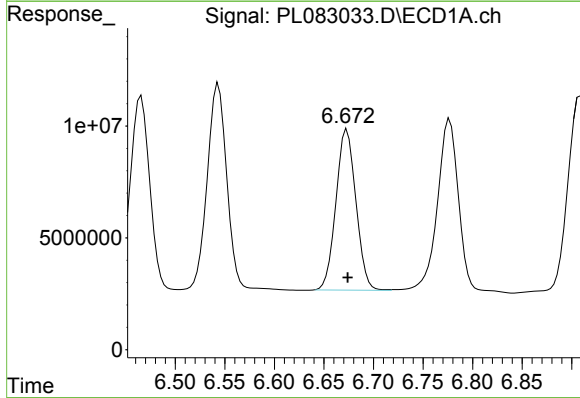
Manual Integrations  
 APPROVED

Reviewed By :Abdul Mirza 05/30/2023  
 Supervised By :Ankita Jodhani 05/30/2023



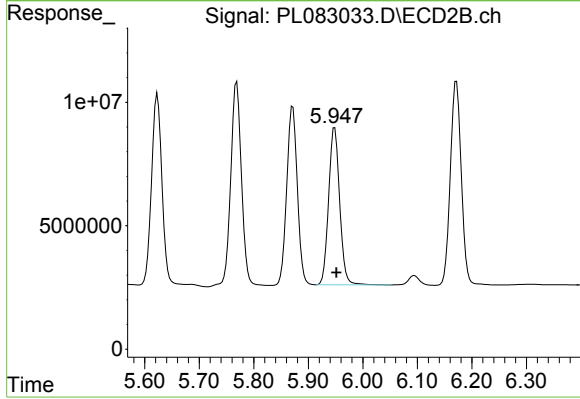
#17 4,4'-DDT

R.T.: 5.871 min  
 Delta R.T.: -0.003 min  
 Response: 97311244  
 Conc: 43.62 ng/ml



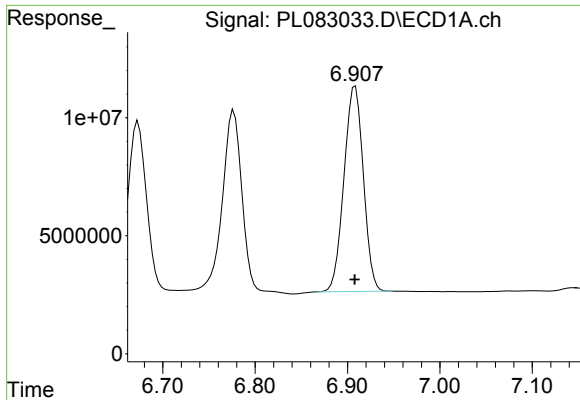
#18 Endrin aldehyde

R.T.: 6.673 min  
 Delta R.T.: 0.000 min  
 Response: 100704003  
 Conc: 50.09 ng/ml



#18 Endrin aldehyde

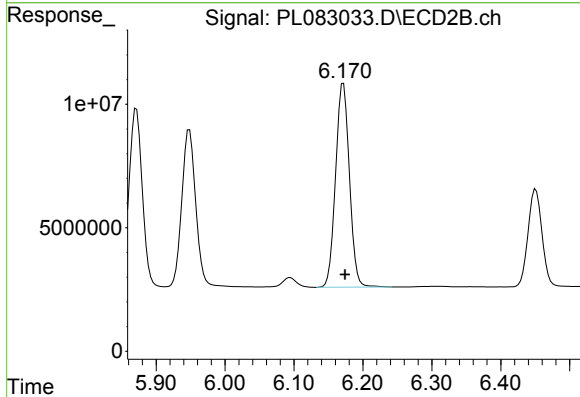
R.T.: 5.948 min  
 Delta R.T.: -0.003 min  
 Response: 89669988  
 Conc: 45.35 ng/ml



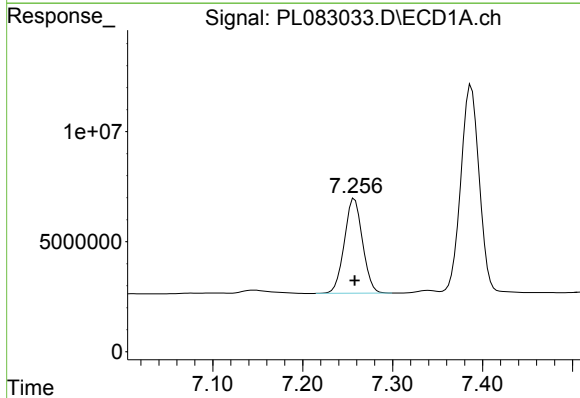
#19 Endosulfan Sulfate  
 R.T.: 6.908 min  
 Delta R.T.: 0.000 min  
 Response: 126926263  
 Conc: 49.51 ng/ml

Instrument :  
 ECD\_L  
 ClientSampleId :  
 PSTDCCC050

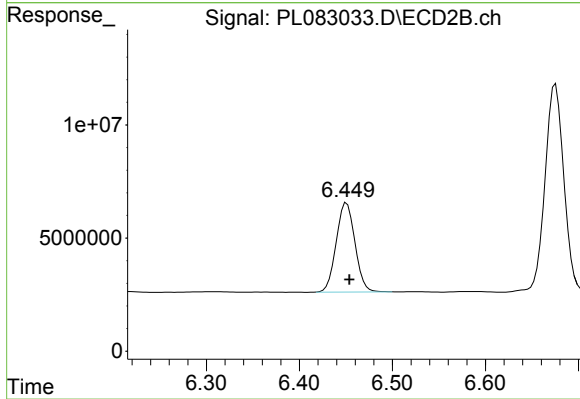
Manual Integrations  
**APPROVED**  
 Reviewed By :Abdul Mirza 05/30/2023  
 Supervised By :Ankita Jodhani 05/30/2023



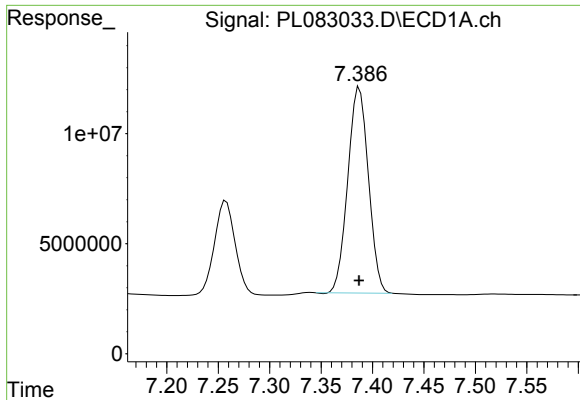
#19 Endosulfan Sulfate  
 R.T.: 6.172 min  
 Delta R.T.: -0.002 min  
 Response: 115153410  
 Conc: 47.02 ng/ml



#20 Methoxychlor  
 R.T.: 7.258 min  
 Delta R.T.: 0.000 min  
 Response: 60356368  
 Conc: 45.64 ng/ml



#20 Methoxychlor  
 R.T.: 6.451 min  
 Delta R.T.: -0.003 min  
 Response: 55251777  
 Conc: 43.45 ng/ml



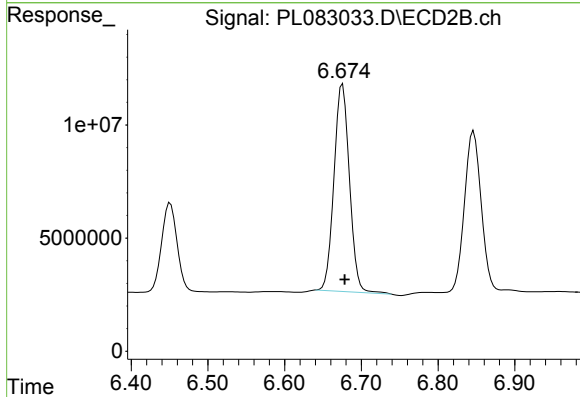
#21 Endrin ketone

R.T.: 7.387 min  
 Delta R.T.: 0.000 min  
 Response: 130495591  
 Conc: 51.16 ng/ml

Instrument :  
 ECD\_L  
 ClientSampleId :  
 PSTDCCC050

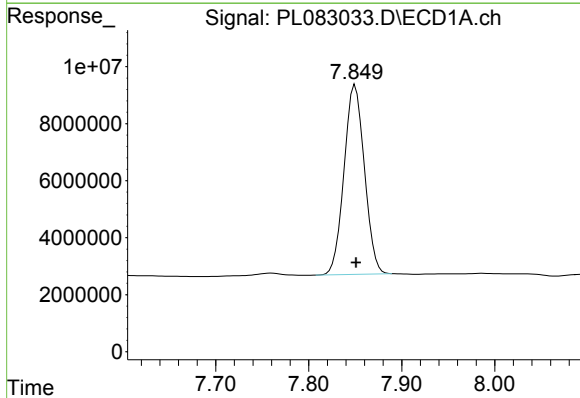
Manual Integrations  
 APPROVED

Reviewed By :Abdul Mirza 05/30/2023  
 Supervised By :Ankita Jodhani 05/30/2023



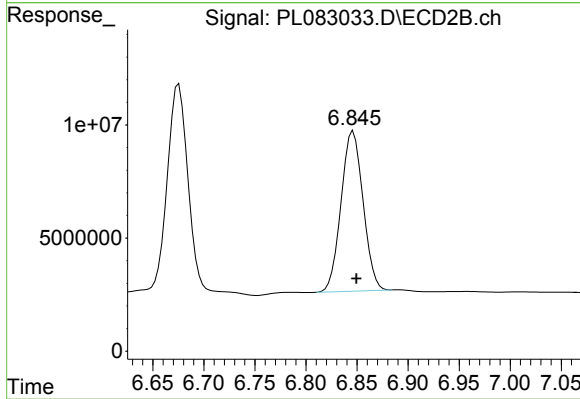
#21 Endrin ketone

R.T.: 6.675 min  
 Delta R.T.: -0.003 min  
 Response: 128358413  
 Conc: 47.47 ng/ml



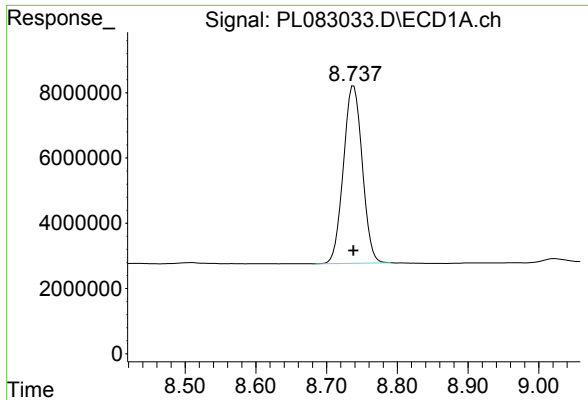
#22 Mirex

R.T.: 7.850 min  
 Delta R.T.: -0.001 min  
 Response: 101325359  
 Conc: 48.34 ng/ml



#22 Mirex

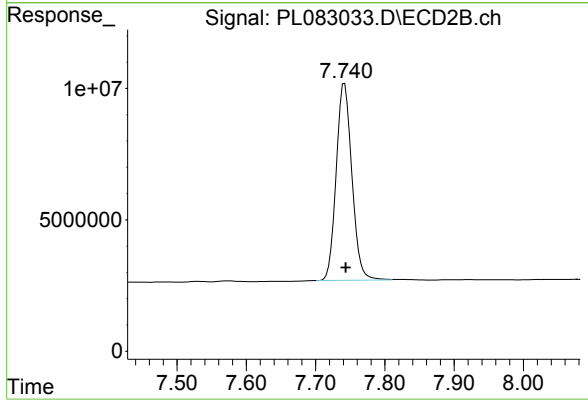
R.T.: 6.846 min  
 Delta R.T.: -0.003 min  
 Response: 106081672  
 Conc: 45.34 ng/ml



#28 Decachlorobiphenyl  
 R.T.: 8.738 min  
 Delta R.T.: 0.000 min  
 Response: 100772277  
 Conc: 48.05 ng/ml

Instrument : ECD\_L  
 ClientSampleId : PSTDCCC050

**Manual Integrations**  
**APPROVED**  
 Reviewed By :Abdul Mirza 05/30/2023  
 Supervised By :Ankita Jodhani 05/30/2023



#28 Decachlorobiphenyl  
 R.T.: 7.742 min  
 Delta R.T.: -0.002 min  
 Response: 117957088  
 Conc: 47.44 ng/ml