

Data Path : Z:\pestpcbsrv\HPCHEM1\ECD_L\Data\PL052623\
 Data File : PL083038.D
 Signal(s) : Signal #1: ECD1A.ch Signal #2: ECD2B.ch
 Acq On : 26 May 2023 10:30
 Operator : AR\AJ
 Sample : PSTDCCC050
 Misc :
 ALS Vial : 4 Sample Multiplier: 1

Instrument :

ECD_L

ClientSampleId :

PSTDCCC050

Manual Integrations

APPROVED

Reviewed By :Abdul Mirza 05/30/2023
 Supervised By :Ankita Jodhani 05/30/2023

Integration File signal 1: autoint1.e
 Integration File signal 2: autoint2.e
 Quant Time: May 26 21:36:26 2023
 Quant Method : Z:\pestpcbsrv\HPCHEM1\ECD_L\methods\PL051923.M
 Quant Title : GC Extractables
 QLast Update : Sat May 20 04:58:53 2023
 Response via : Initial Calibration
 Integrator: ChemStation

Volume Inj. : 1 µl
 Signal #1 Phase : ZB-MR2 Signal #2 Phase: ZB-MR1
 Signal #1 Info : 30M x 0.32mm x0.2 Signal #2 Info : 30M x 0.32mm x0.5µm

	Compound	RT#1	RT#2	Resp#1	Resp#2	ng/ml	ng/ml

System Monitoring Compounds							
1)	SA Tetrachlo...	3.319	2.638	137.4E6	114.5E6	46.743	44.101
28)	SA Decachlor...	8.736	7.743	97565737	115.8E6	46.519	46.571
Target Compounds							
2)	A alpha-BHC	3.768	3.134	210.6E6	165.3E6	47.436	44.289
3)	MA gamma-BHC...	4.096	3.460	195.5E6	155.1E6	47.195	46.525
4)	MA Heptachlor	4.673	3.791	174.6E6	151.8E6	45.685	41.461
5)	MB Aldrin	5.010	4.067	173.0E6	150.7E6	49.168	46.316
6)	B beta-BHC	4.300	3.761	84988506	66607861	45.141	46.576
7)	B delta-BHC	4.541	3.986	196.7E6	154.5E6	57.186	47.152
8)	B Heptachlo...	5.436	4.568	157.7E6	135.4E6	49.286	45.626
9)	A Endosulfan I	5.816	4.935	146.5E6	116.5E6	48.816m	41.674
10)	B gamma-Chl...	5.690	4.817	160.0E6	137.1E6	50.370m	45.662
11)	B alpha-Chl...	5.769	4.880	168.4E6	136.0E6	52.461	45.317
12)	B 4,4'-DDE	5.947	5.069	135.5E6	118.2E6	49.172	48.666m
13)	MA Dieldrin	6.092	5.200	144.6E6	129.4E6	48.086	45.854
14)	MA Endrin	6.319	5.474	122.4E6	114.1E6	45.565	44.964
15)	B Endosulfa...	6.541	5.771	120.5E6	111.1E6	45.164	44.914
16)	A 4,4'-DDD	6.463	5.625	115.4E6	100.3E6	53.123	52.171
17)	MA 4,4'-DDT	6.774	5.873	108.4E6	95418109	43.293	42.769
18)	B Endrin al...	6.671	5.951	96192240	87542362	47.841	44.270
19)	B Endosulfa...	6.906	6.173	124.6E6	111.7E6	48.608	45.596
20)	A Methoxychlor	7.256	6.452	58493791	54255622	44.234	42.662
21)	B Endrin ke...	7.385	6.678	127.8E6	127.4E6	50.099	47.115
22)	Mirex	7.850	6.849	98089759	104.7E6	46.798	44.762

(f)=RT Delta > 1/2 Window (#)=Amounts differ by > 25% (m)=manual int.

Data Path : Z:\pestpcbsrv\HPCHEM1\ECD_L\Data\PL052623\
 Data File : PL083038.D
 Signal(s) : Signal #1: ECD1A.ch Signal #2: ECD2B.ch
 Acq On : 26 May 2023 10:30
 Operator : AR\AJ
 Sample : PSTDCCC050
 Misc :
 ALS Vial : 4 Sample Multiplier: 1

Instrument :

ECD_L

ClientSampleId :

PSTDCCC050

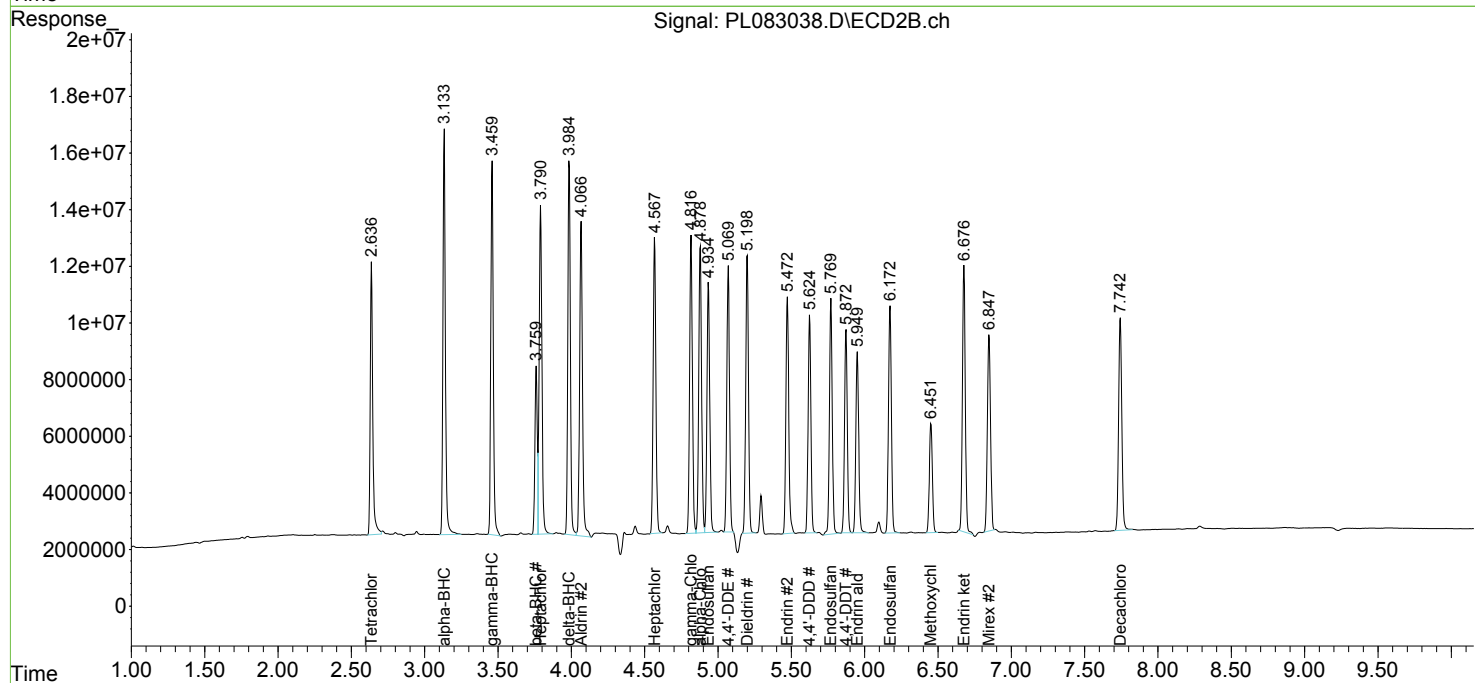
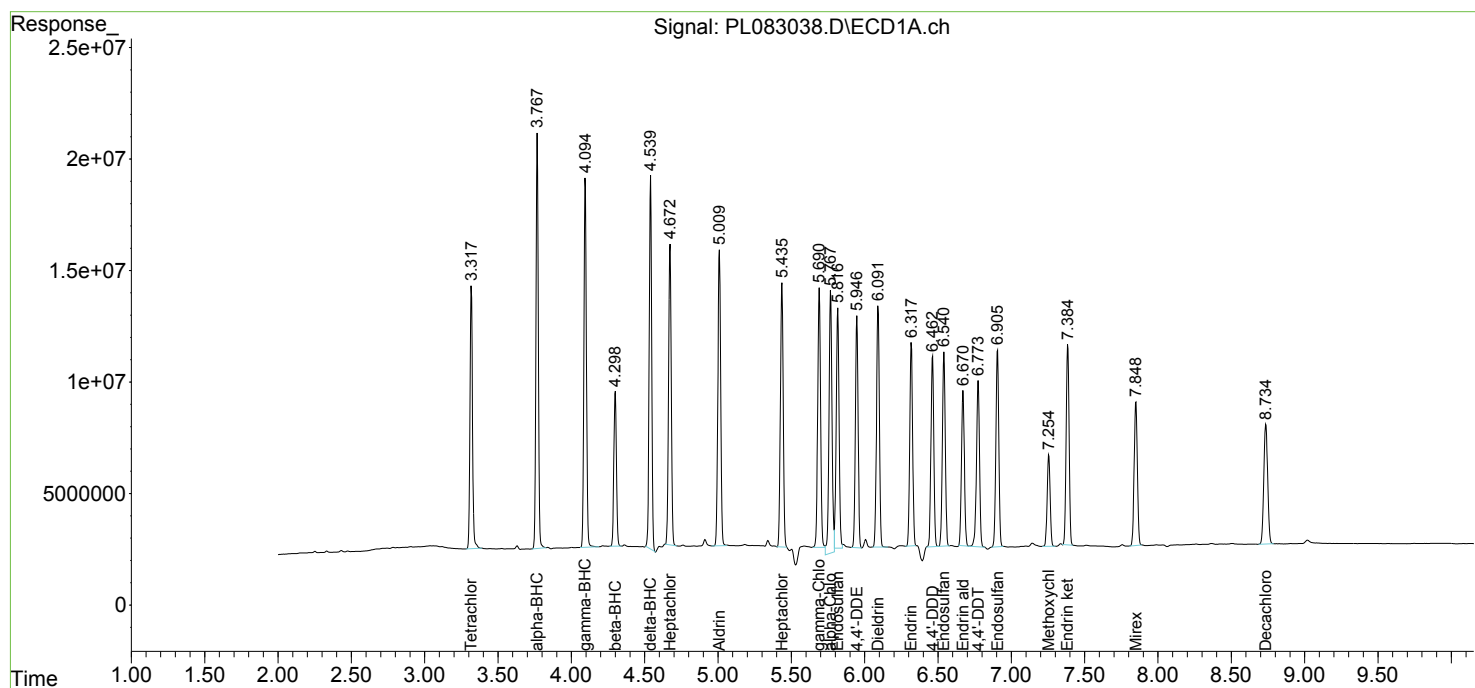
Manual Integrations

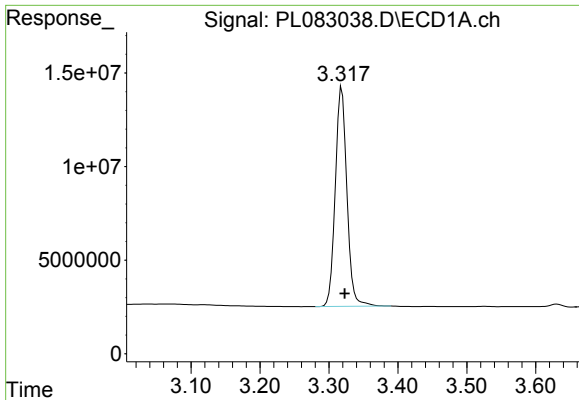
APPROVED

Reviewed By :Abdul Mirza 05/30/2023
 Supervised By :Ankita Jodhani 05/30/2023

Integration File signal 1: autoint1.e
 Integration File signal 2: autoint2.e
 Quant Time: May 26 21:36:26 2023
 Quant Method : Z:\pestpcbsrv\HPCHEM1\ECD_L\methods\PL051923.M
 Quant Title : GC Extractables
 QLast Update : Sat May 20 04:58:53 2023
 Response via : Initial Calibration
 Integrator: ChemStation

Volume Inj. : 1 µl
 Signal #1 Phase : ZB-MR2 Signal #2 Phase: ZB-MR1
 Signal #1 Info : 30M x 0.32mm x0.2 Signal #2 Info : 30M x 0.32mm x0.5µm





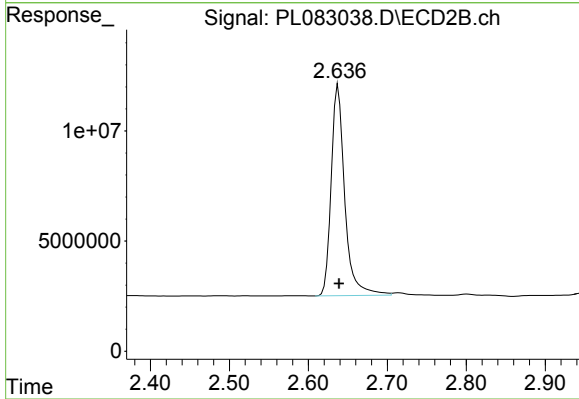
#1 Tetrachloro-m-xylene

R.T.: 3.319 min
 Delta R.T.: -0.004 min
 Response: 137379581
 Conc: 46.74 ng/ml

Instrument : ECD_L
 Client Sample Id : PSTDCCC050

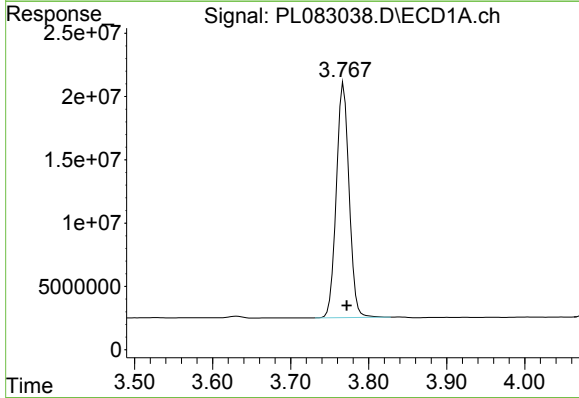
Manual Integrations
 APPROVED

Reviewed By :Abdul Mirza 05/30/2023
 Supervised By :Ankita Jodhani 05/30/2023



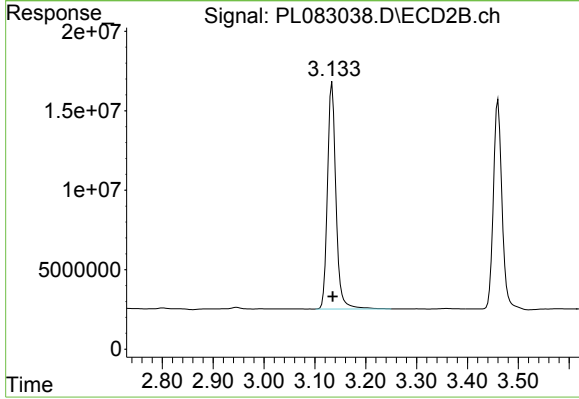
#1 Tetrachloro-m-xylene

R.T.: 2.638 min
 Delta R.T.: -0.001 min
 Response: 114488964
 Conc: 44.10 ng/ml



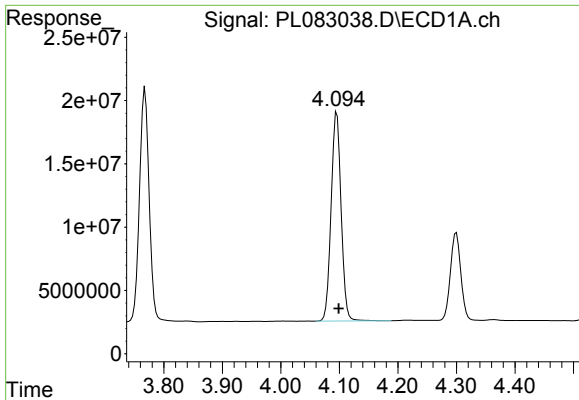
#2 alpha-BHC

R.T.: 3.768 min
 Delta R.T.: -0.004 min
 Response: 210581919
 Conc: 47.44 ng/ml



#2 alpha-BHC

R.T.: 3.134 min
 Delta R.T.: -0.001 min
 Response: 165260880
 Conc: 44.29 ng/ml



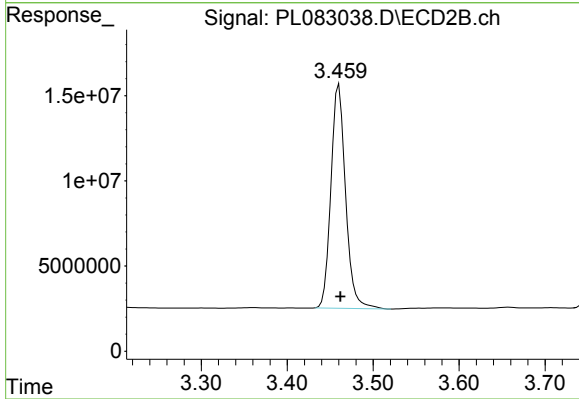
#3 gamma-BHC (Lindane)

R.T.: 4.096 min
Delta R.T.: -0.003 min
Response: 195525279
Conc: 47.20 ng/ml

Instrument :
ECD_L
Client Sample Id :
PSTDCCC050

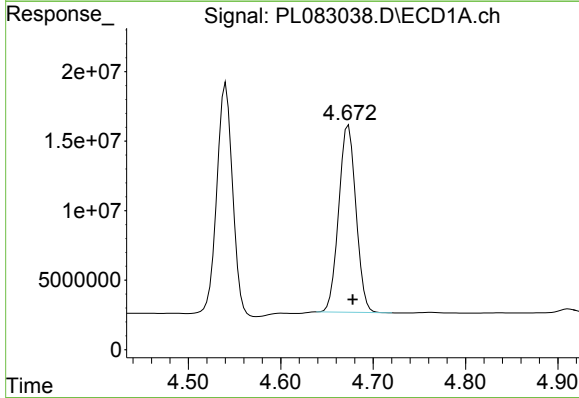
Manual Integrations
APPROVED

Reviewed By :Abdul Mirza 05/30/2023
Supervised By :Ankita Jodhani 05/30/2023



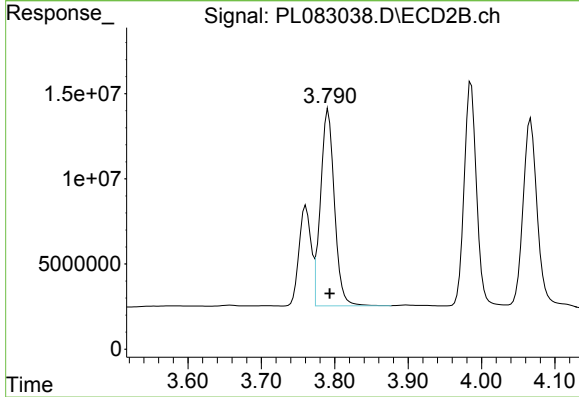
#3 gamma-BHC (Lindane)

R.T.: 3.460 min
Delta R.T.: -0.002 min
Response: 155082626
Conc: 46.53 ng/ml



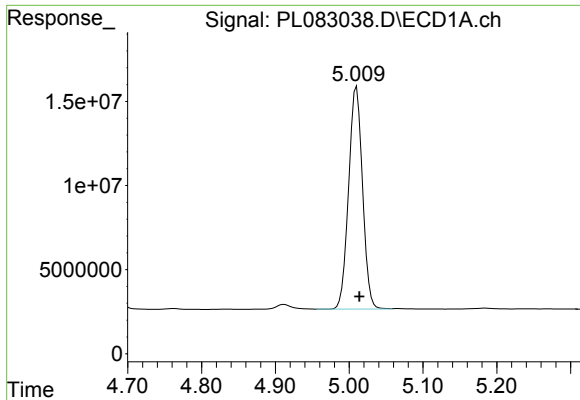
#4 Heptachlor

R.T.: 4.673 min
Delta R.T.: -0.005 min
Response: 174629688
Conc: 45.69 ng/ml



#4 Heptachlor

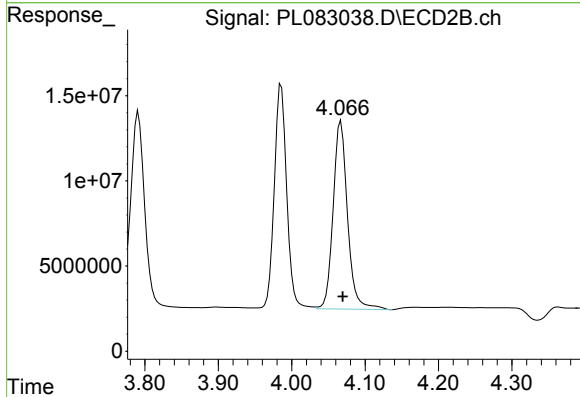
R.T.: 3.791 min
Delta R.T.: -0.002 min
Response: 151793308
Conc: 41.46 ng/ml



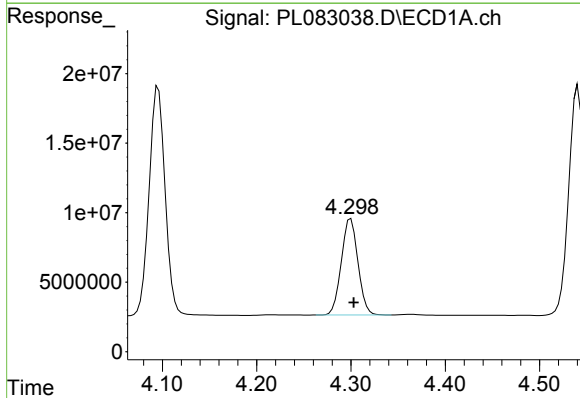
#5 Aldrin
 R.T.: 5.010 min
 Delta R.T.: -0.004 min
 Response: 172980260
 Conc: 49.17 ng/ml

Instrument :
 ECD_L
 ClientSampleId :
 PSTDCCC050

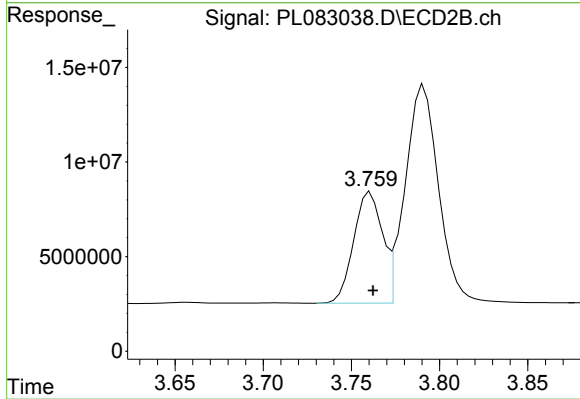
Manual Integrations
APPROVED
 Reviewed By :Abdul Mirza 05/30/2023
 Supervised By :Ankita Jodhani 05/30/2023



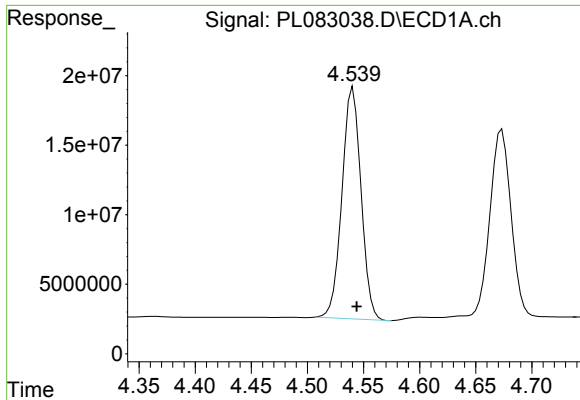
#5 Aldrin
 R.T.: 4.067 min
 Delta R.T.: -0.003 min
 Response: 150693395
 Conc: 46.32 ng/ml



#6 beta-BHC
 R.T.: 4.300 min
 Delta R.T.: -0.003 min
 Response: 84988506
 Conc: 45.14 ng/ml



#6 beta-BHC
 R.T.: 3.761 min
 Delta R.T.: -0.002 min
 Response: 66607861
 Conc: 46.58 ng/ml



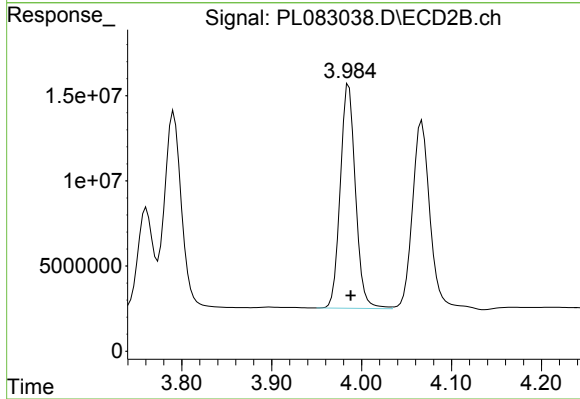
#7 delta-BHC

R.T.: 4.541 min
 Delta R.T.: -0.003 min
 Response: 196656211
 Conc: 57.19 ng/ml

Instrument :
 ECD_L
 ClientSampleId :
 PSTDCCC050

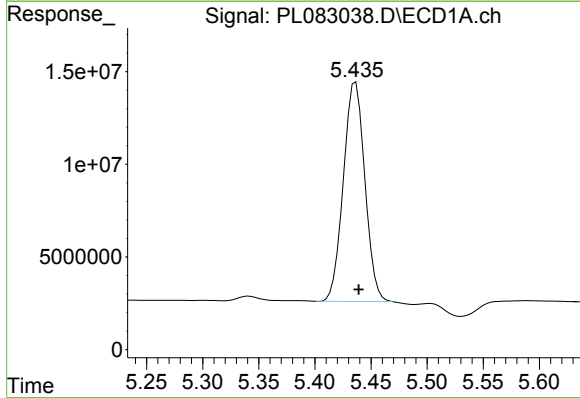
Manual Integrations
 APPROVED

Reviewed By :Abdul Mirza 05/30/2023
 Supervised By :Ankita Jodhani 05/30/2023



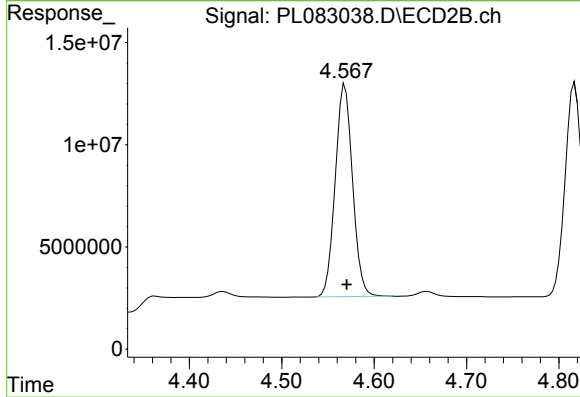
#7 delta-BHC

R.T.: 3.986 min
 Delta R.T.: -0.002 min
 Response: 154491625
 Conc: 47.15 ng/ml



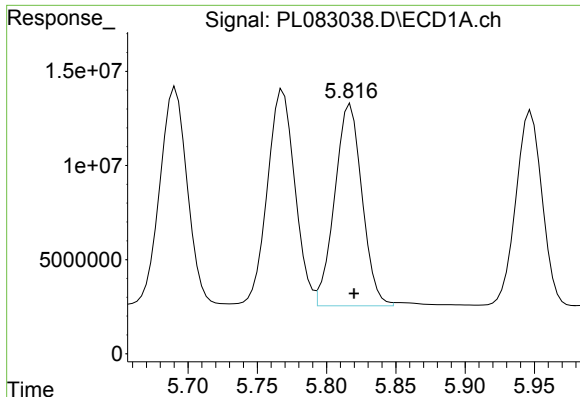
#8 Heptachlor epoxide

R.T.: 5.436 min
 Delta R.T.: -0.003 min
 Response: 157651056
 Conc: 49.29 ng/ml



#8 Heptachlor epoxide

R.T.: 4.568 min
 Delta R.T.: -0.002 min
 Response: 135414351
 Conc: 45.63 ng/ml



#9 Endosulfan I

R.T.: 5.816 min
 Delta R.T.: -0.004 min
 Response: 146477763
 Conc: 48.82 ng/ml

Instrument :

ECD_L

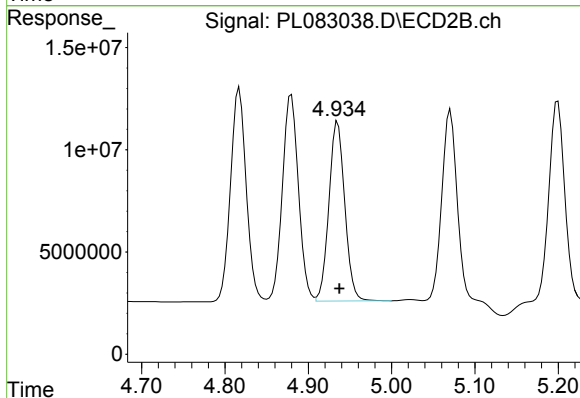
ClientSampleId :

PSTDCCC050

Manual Integrations

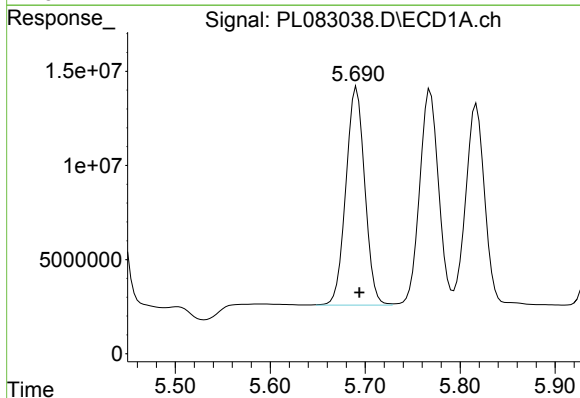
APPROVED

Reviewed By :Abdul Mirza 05/30/2023
 Supervised By :Ankita Jodhani 05/30/2023



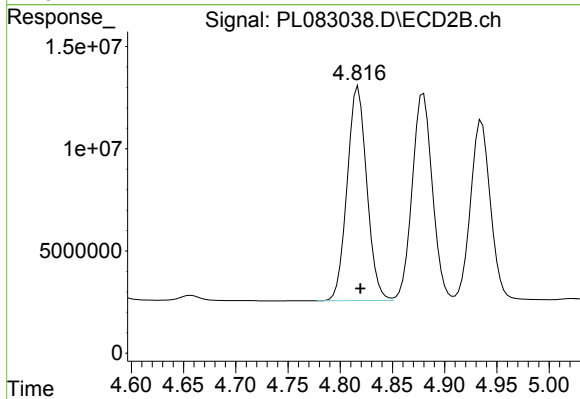
#9 Endosulfan I

R.T.: 4.935 min
 Delta R.T.: -0.002 min
 Response: 116452956
 Conc: 41.67 ng/ml



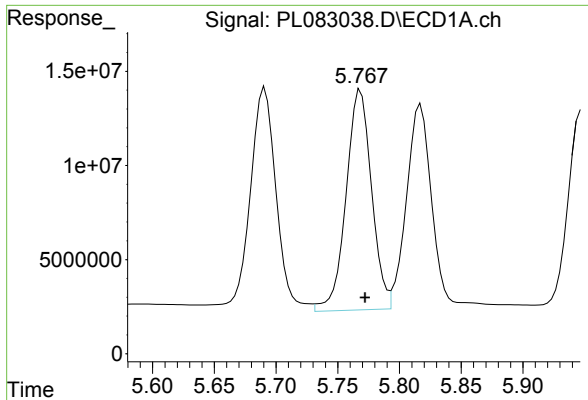
#10 gamma-Chlordane

R.T.: 5.690 min
 Delta R.T.: -0.004 min
 Response: 160022835
 Conc: 50.37 ng/ml m



#10 gamma-Chlordane

R.T.: 4.817 min
 Delta R.T.: -0.002 min
 Response: 137141276
 Conc: 45.66 ng/ml



#11 alpha-Chlordane

R.T.: 5.769 min
 Delta R.T.: -0.003 min
 Response: 168364538
 Conc: 52.46 ng/ml

Instrument :

ECD_L

ClientSampleId :

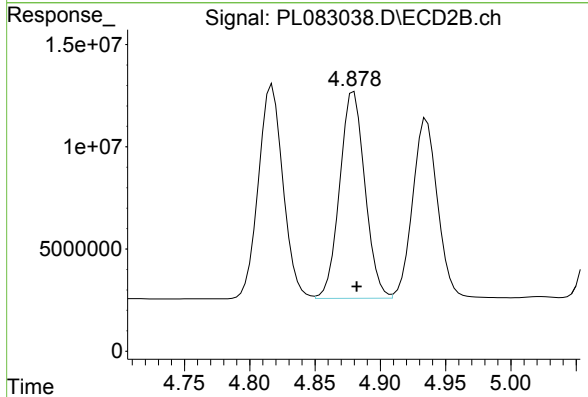
PSTDCCC050

Manual Integrations

APPROVED

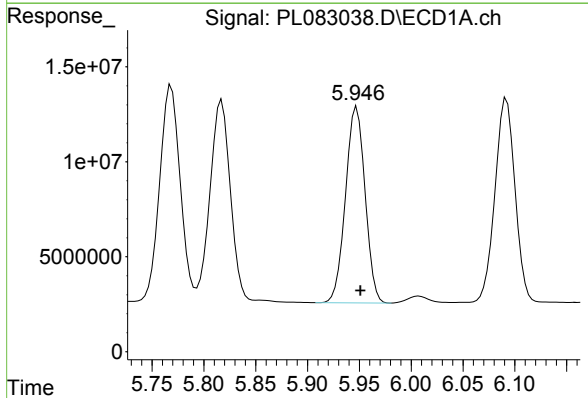
Reviewed By :Abdul Mirza 05/30/2023

Supervised By :Ankita Jodhani 05/30/2023



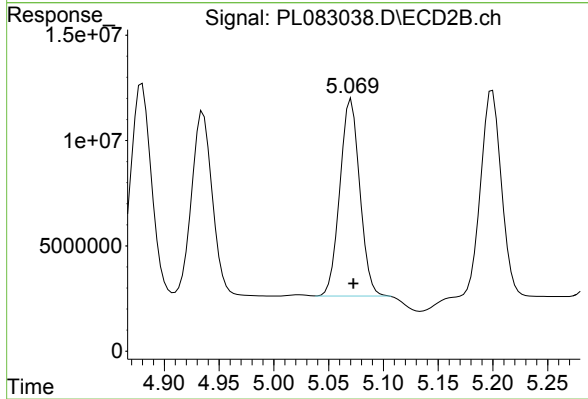
#11 alpha-Chlordane

R.T.: 4.880 min
 Delta R.T.: -0.002 min
 Response: 136040932
 Conc: 45.32 ng/ml



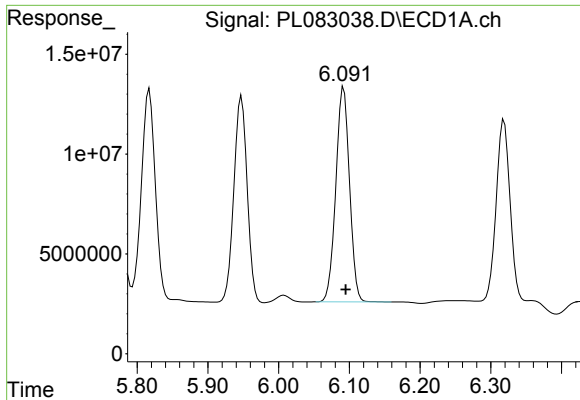
#12 4,4'-DDE

R.T.: 5.947 min
 Delta R.T.: -0.003 min
 Response: 135541869
 Conc: 49.17 ng/ml



#12 4,4'-DDE

R.T.: 5.069 min
 Delta R.T.: -0.003 min
 Response: 118198313
 Conc: 48.67 ng/ml m



#13 Dieldrin

R.T.: 6.092 min
 Delta R.T.: -0.003 min
 Response: 144635179
 Conc: 48.09 ng/ml

Instrument :

ECD_L

ClientSampleId :

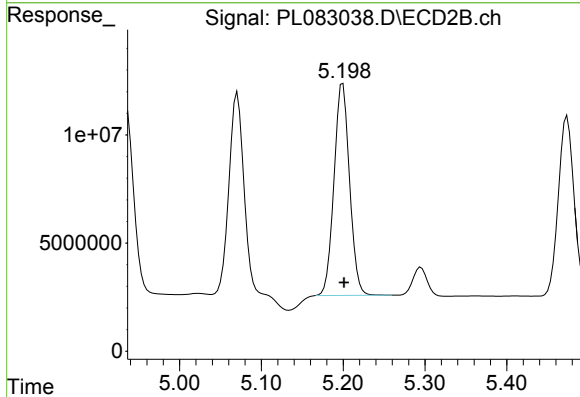
PSTDCCC050

Manual Integrations

APPROVED

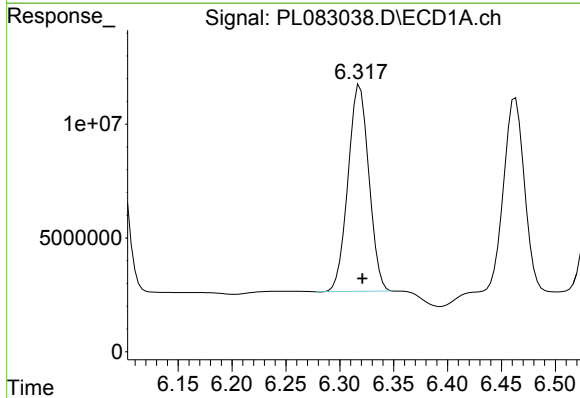
Reviewed By :Abdul Mirza 05/30/2023

Supervised By :Ankita Jodhani 05/30/2023



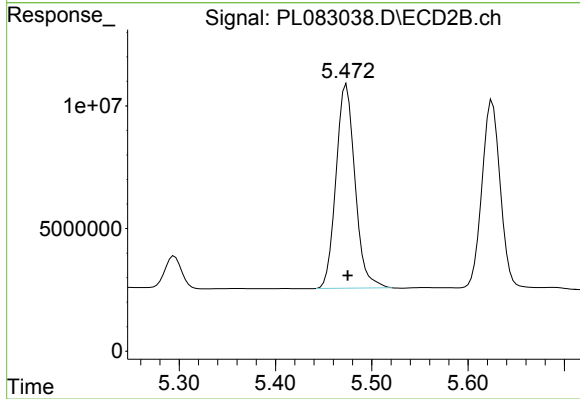
#13 Dieldrin

R.T.: 5.200 min
 Delta R.T.: -0.002 min
 Response: 129441162
 Conc: 45.85 ng/ml



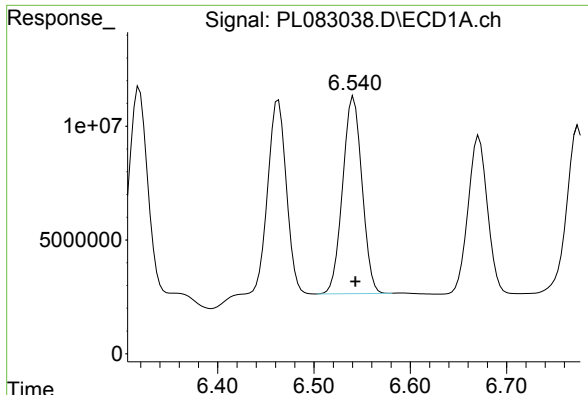
#14 Endrin

R.T.: 6.319 min
 Delta R.T.: -0.002 min
 Response: 122443911
 Conc: 45.56 ng/ml



#14 Endrin

R.T.: 5.474 min
 Delta R.T.: -0.001 min
 Response: 114071485
 Conc: 44.96 ng/ml



#15 Endosulfan II

R.T.: 6.541 min
 Delta R.T.: -0.002 min
 Response: 120521411
 Conc: 45.16 ng/ml

Instrument :

ECD_L

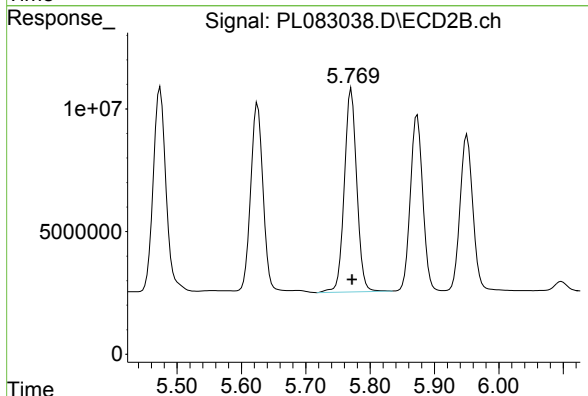
ClientSampleId :

PSTDCCC050

Manual Integrations

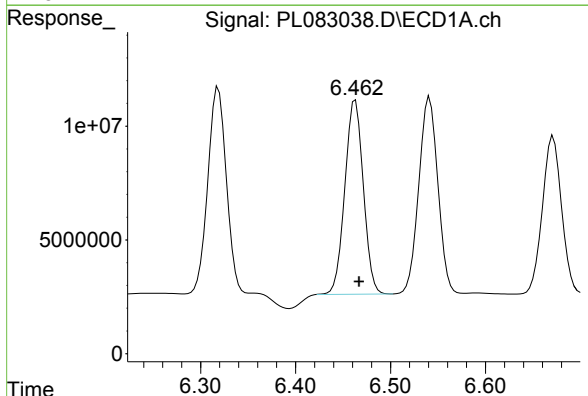
APPROVED

Reviewed By :Abdul Mirza 05/30/2023
 Supervised By :Ankita Jodhani 05/30/2023



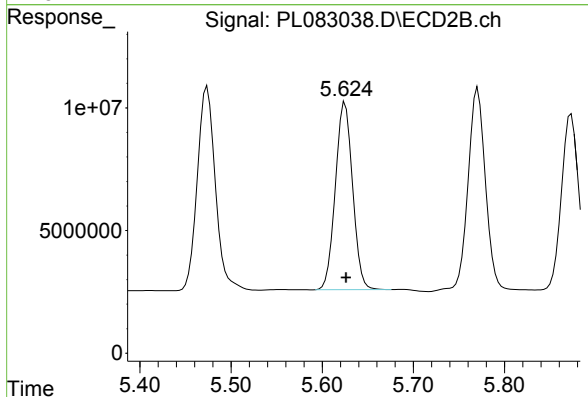
#15 Endosulfan II

R.T.: 5.771 min
 Delta R.T.: -0.001 min
 Response: 111125870
 Conc: 44.91 ng/ml



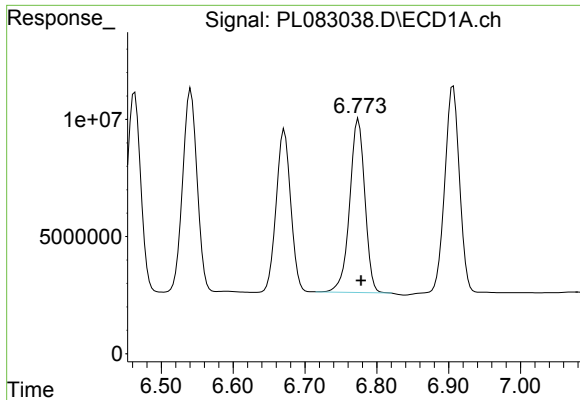
#16 4,4'-DDD

R.T.: 6.463 min
 Delta R.T.: -0.004 min
 Response: 115439137
 Conc: 53.12 ng/ml



#16 4,4'-DDD

R.T.: 5.625 min
 Delta R.T.: 0.000 min
 Response: 100338050
 Conc: 52.17 ng/ml



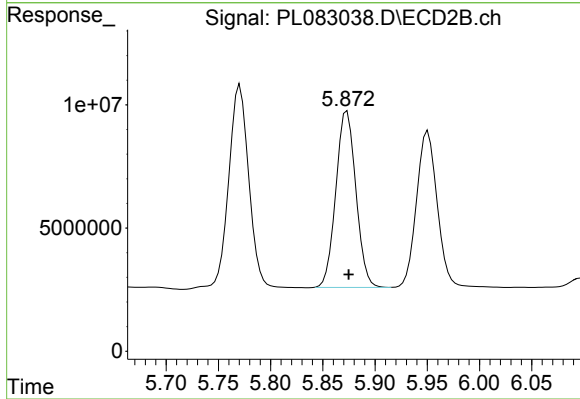
#17 4,4'-DDT

R.T.: 6.774 min
 Delta R.T.: -0.004 min
 Response: 108369854
 Conc: 43.29 ng/ml

Instrument :
 ECD_L
 ClientSampleId :
 PSTDCCC050

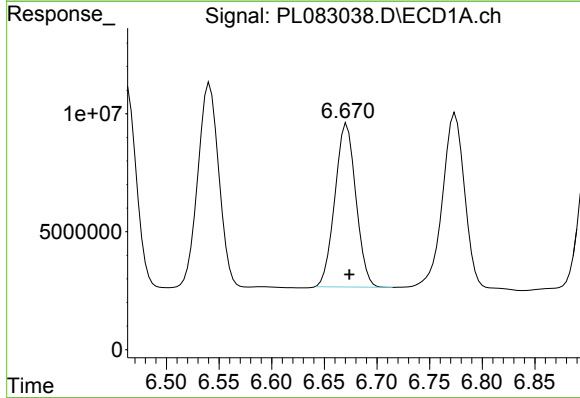
Manual Integrations
 APPROVED

Reviewed By :Abdul Mirza 05/30/2023
 Supervised By :Ankita Jodhani 05/30/2023



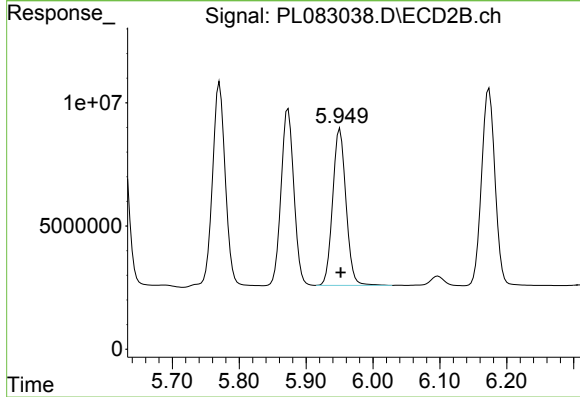
#17 4,4'-DDT

R.T.: 5.873 min
 Delta R.T.: -0.001 min
 Response: 95418109
 Conc: 42.77 ng/ml



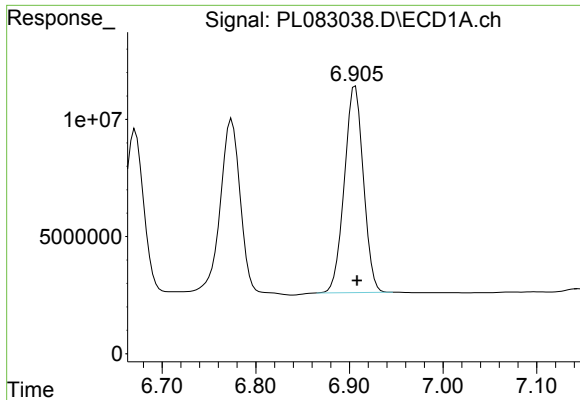
#18 Endrin aldehyde

R.T.: 6.671 min
 Delta R.T.: -0.003 min
 Response: 96192240
 Conc: 47.84 ng/ml



#18 Endrin aldehyde

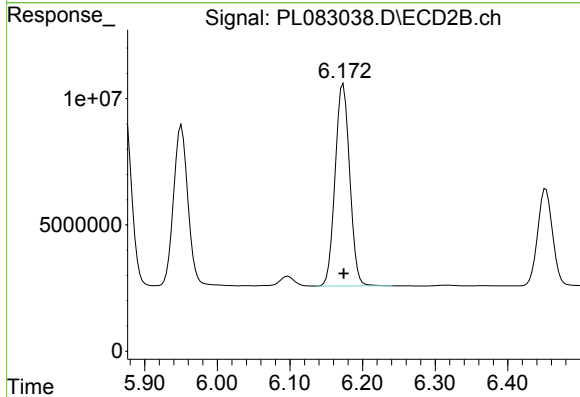
R.T.: 5.951 min
 Delta R.T.: -0.001 min
 Response: 87542362
 Conc: 44.27 ng/ml



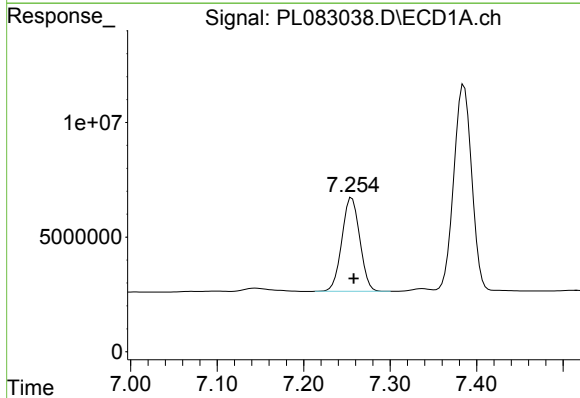
#19 Endosulfan Sulfate
 R.T.: 6.906 min
 Delta R.T.: -0.002 min
 Response: 124618307
 Conc: 48.61 ng/ml

Instrument :
 ECD_L
 ClientSampleId :
 PSTDCCC050

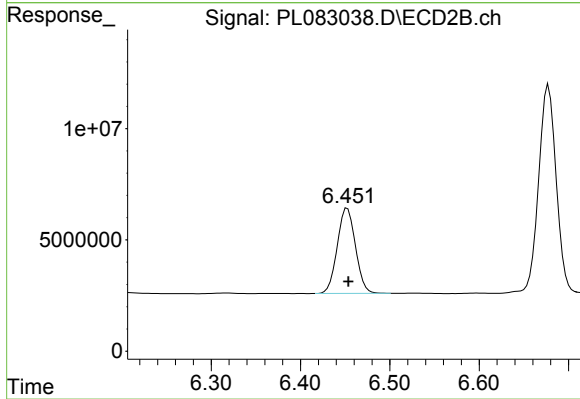
Manual Integrations
APPROVED
 Reviewed By :Abdul Mirza 05/30/2023
 Supervised By :Ankita Jodhani 05/30/2023



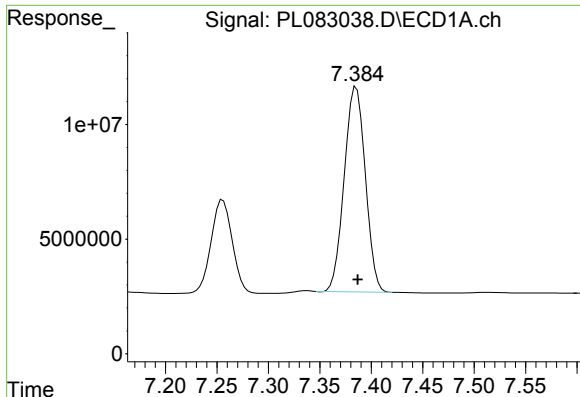
#19 Endosulfan Sulfate
 R.T.: 6.173 min
 Delta R.T.: 0.000 min
 Response: 111662918
 Conc: 45.60 ng/ml



#20 Methoxychlor
 R.T.: 7.256 min
 Delta R.T.: -0.002 min
 Response: 58493791
 Conc: 44.23 ng/ml



#20 Methoxychlor
 R.T.: 6.452 min
 Delta R.T.: -0.001 min
 Response: 54255622
 Conc: 42.66 ng/ml



#21 Endrin ketone

R.T.: 7.385 min
 Delta R.T.: -0.002 min
 Response: 127791569
 Conc: 50.10 ng/ml

Instrument :

ECD_L

ClientSampleId :

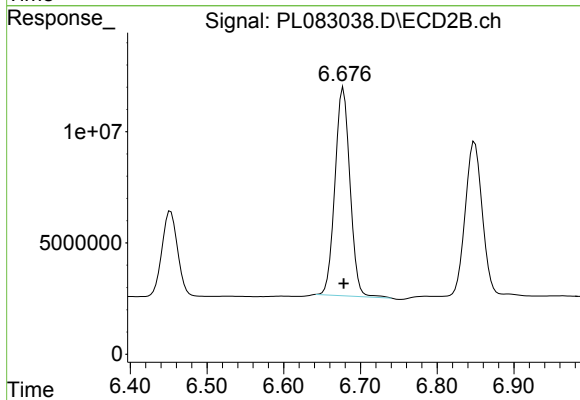
PSTDCCC050

Manual Integrations

APPROVED

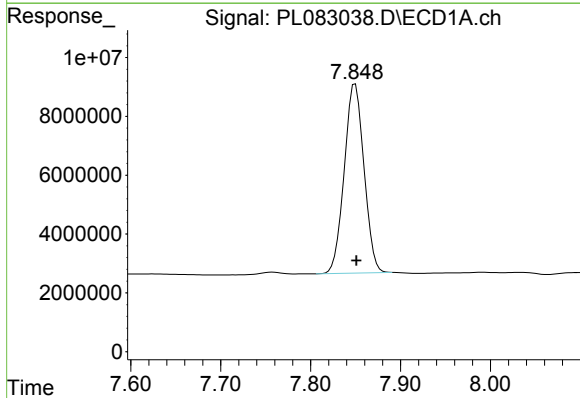
Reviewed By :Abdul Mirza 05/30/2023

Supervised By :Ankita Jodhani 05/30/2023



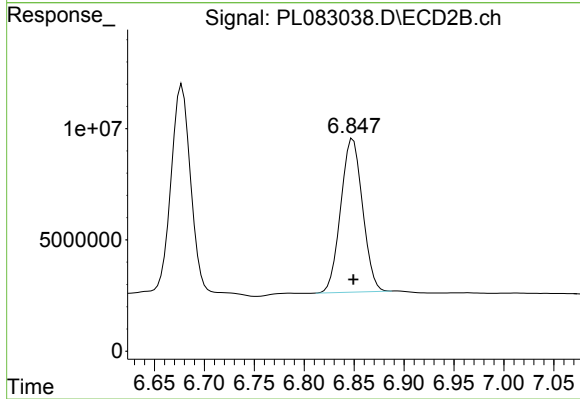
#21 Endrin ketone

R.T.: 6.678 min
 Delta R.T.: 0.000 min
 Response: 127391378
 Conc: 47.11 ng/ml



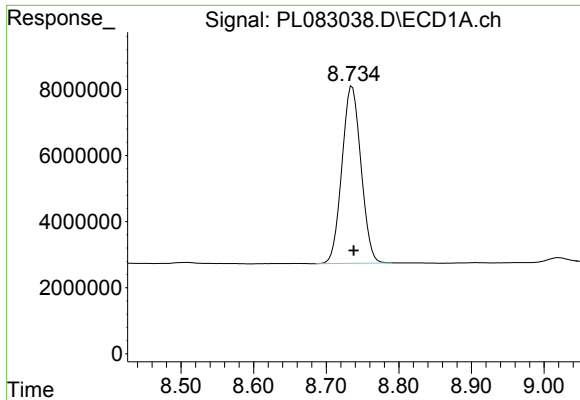
#22 Mirex

R.T.: 7.850 min
 Delta R.T.: -0.001 min
 Response: 98089759
 Conc: 46.80 ng/ml



#22 Mirex

R.T.: 6.849 min
 Delta R.T.: 0.000 min
 Response: 104735855
 Conc: 44.76 ng/ml

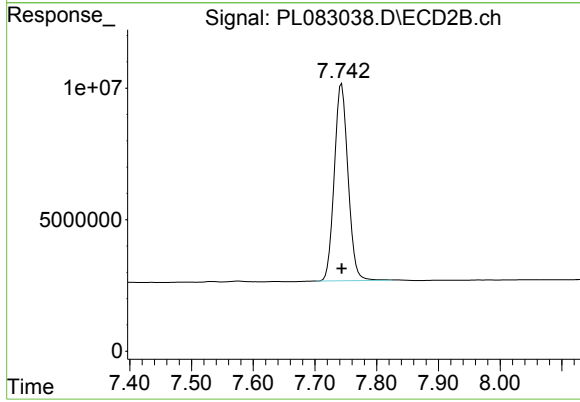


#28 Decachlorobiphenyl
R.T.: 8.736 min
Delta R.T.: -0.002 min
Response: 97565737
Conc: 46.52 ng/ml

Instrument :
ECD_L
ClientSampleId :
PSTDCCC050

Manual Integrations
APPROVED

Reviewed By :Abdul Mirza 05/30/2023
Supervised By :Ankita Jodhani 05/30/2023



#28 Decachlorobiphenyl
R.T.: 7.743 min
Delta R.T.: 0.000 min
Response: 115801689
Conc: 46.57 ng/ml