

Data Path : Z:\pestpcbsrv\HPCHEM1\ECD_L\Data\PL052623\
 Data File : PL083039.D
 Signal(s) : Signal #1: ECD1A.ch Signal #2: ECD2B.ch
 Acq On : 26 May 2023 10:47
 Operator : AR\AJ
 Sample : 02940-01DL 2X
 Misc :
 ALS Vial : 8 Sample Multiplier: 1

Instrument :
 ECD_L
 ClientSampleId :
 RBR-251671DL

Integration File signal 1: autoint1.e
 Integration File signal 2: autoint2.e
 Quant Time: May 26 21:37:12 2023
 Quant Method : Z:\pestpcbsrv\HPCHEM1\ECD_L\methods\PL051923.M
 Quant Title : GC Extractables
 QLast Update : Sat May 20 04:58:53 2023
 Response via : Initial Calibration
 Integrator: ChemStation

Volume Inj. : 1 µl
 Signal #1 Phase : ZB-MR2 Signal #2 Phase: ZB-MR1
 Signal #1 Info : 30M x 0.32mm x0.2 Signal #2 Info : 30M x 0.32mm x0.5µm

Compound	RT#1	RT#2	Resp#1	Resp#2	ng/ml	ng/ml

System Monitoring Compounds						
1) SA Tetrachlo...	3.324	2.638	15636792	13120257	5.320	5.054
28) SA Decachlor...	8.741	7.745	12716839	16675258	6.063	6.706
Target Compounds						
11) B alpha-Chl...	5.778	4.880	14740868	6914453	4.593	2.303 #
12) B 4,4'-DDE	5.954	5.071	7941336	7856861	2.881	3.235
16) A 4,4'-DDD	6.468	5.627	9830347	6945193	4.524	3.611
17) MA 4,4'-DDT	6.779	5.875	142.0E6	130.2E6	56.732	58.379

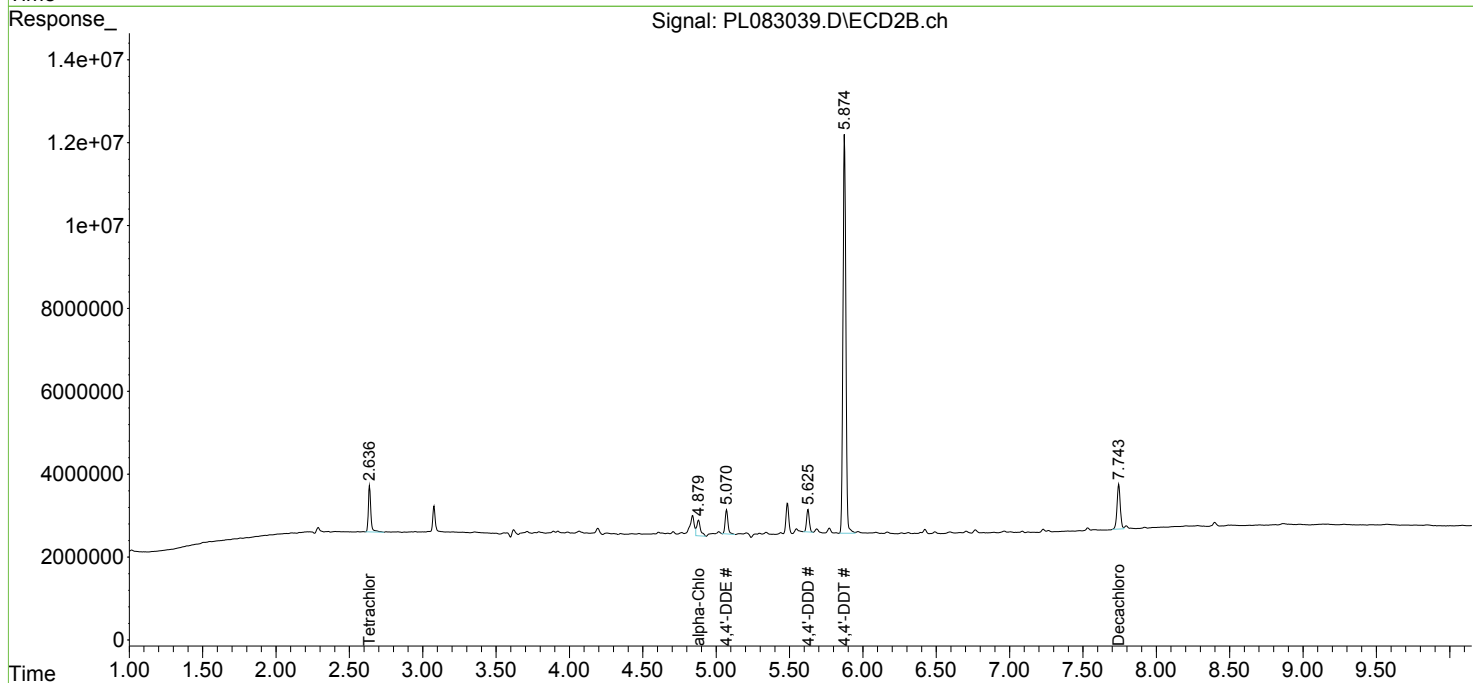
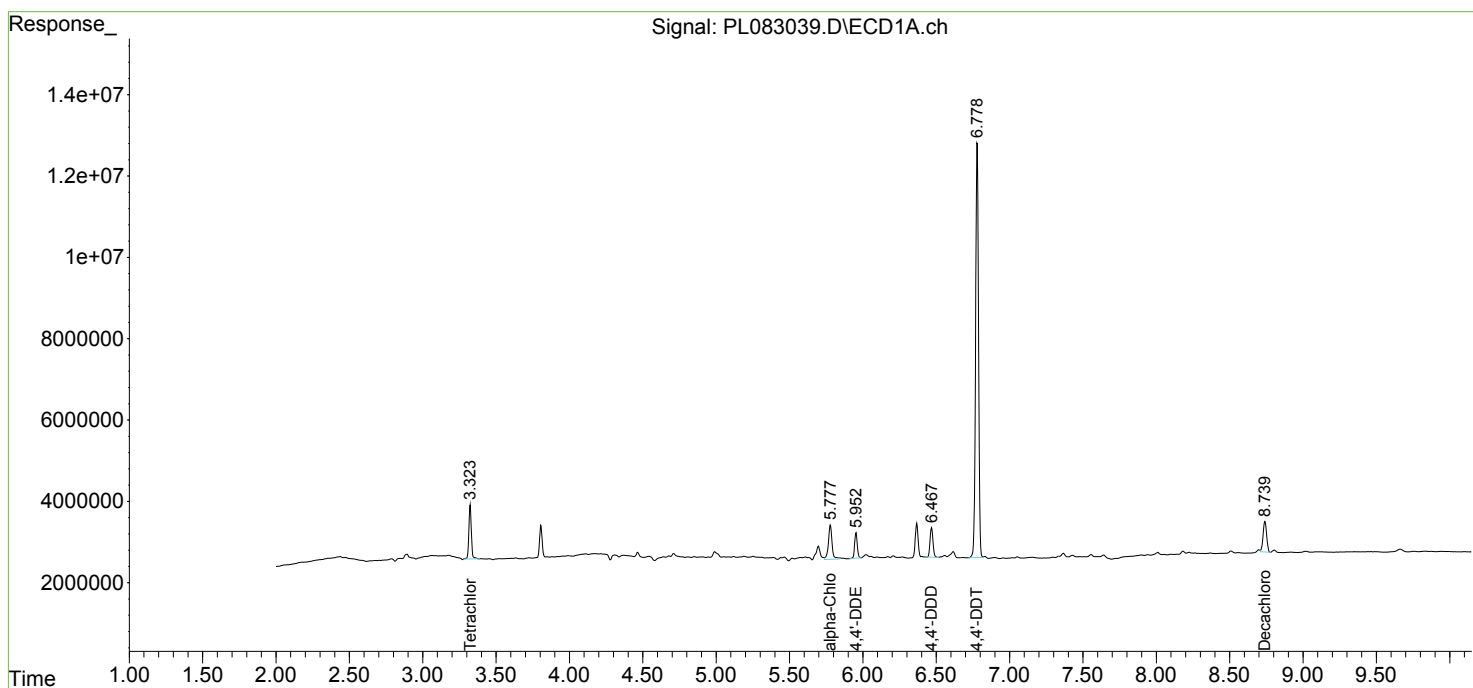
(f)=RT Delta > 1/2 Window (#)=Amounts differ by > 25% (m)=manual int.

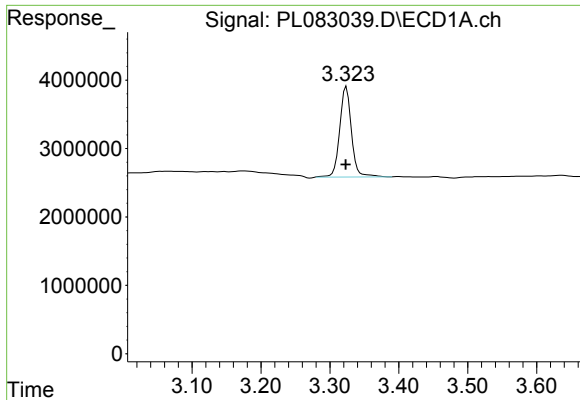
Data Path : Z:\pestpcbsrv\HPCHEM1\ECD_L\Data\PL052623\
 Data File : PL083039.D
 Signal(s) : Signal #1: ECD1A.ch Signal #2: ECD2B.ch
 Acq On : 26 May 2023 10:47
 Operator : AR\AJ
 Sample : 02940-01DL 2X
 Misc :
 ALS Vial : 8 Sample Multiplier: 1

Instrument :
 ECD_L
 ClientSampleId :
 RBR-251671DL

Integration File signal 1: autoint1.e
 Integration File signal 2: autoint2.e
 Quant Time: May 26 21:37:12 2023
 Quant Method : Z:\pestpcbsrv\HPCHEM1\ECD_L\methods\PL051923.M
 Quant Title : GC Extractables
 QLast Update : Sat May 20 04:58:53 2023
 Response via : Initial Calibration
 Integrator: ChemStation

Volume Inj. : 1 µl
 Signal #1 Phase : ZB-MR2 Signal #2 Phase: ZB-MR1
 Signal #1 Info : 30M x 0.32mm x0.2 Signal #2 Info : 30M x 0.32mm x0.5µm

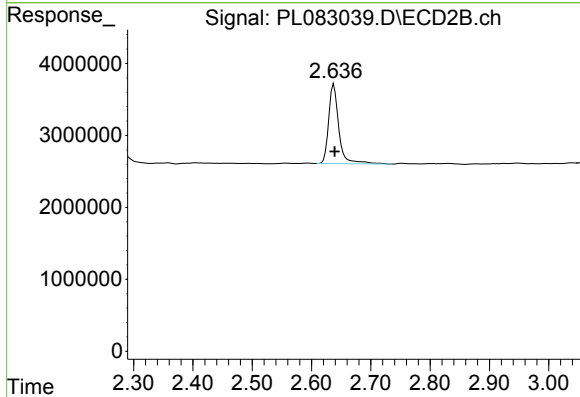




#1 Tetrachloro-m-xylene

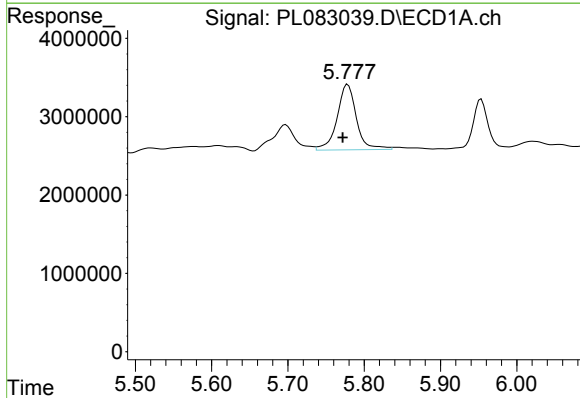
R.T.: 3.324 min
 Delta R.T.: 0.000 min
 Response: 15636792
 Conc: 5.32 ng/ml

Instrument :
 ECD_L
 ClientSampleId :
 RBR-251671DL



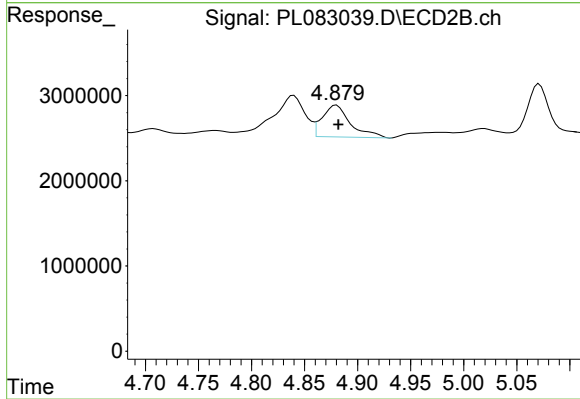
#1 Tetrachloro-m-xylene

R.T.: 2.638 min
 Delta R.T.: -0.001 min
 Response: 13120257
 Conc: 5.05 ng/ml



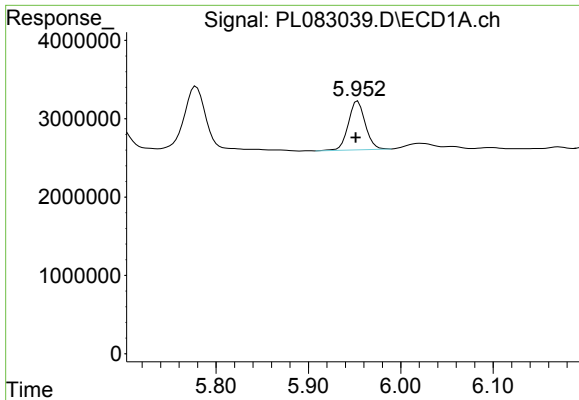
#11 alpha-Chlordane

R.T.: 5.778 min
 Delta R.T.: 0.006 min
 Response: 14740868
 Conc: 4.59 ng/ml



#11 alpha-Chlordane

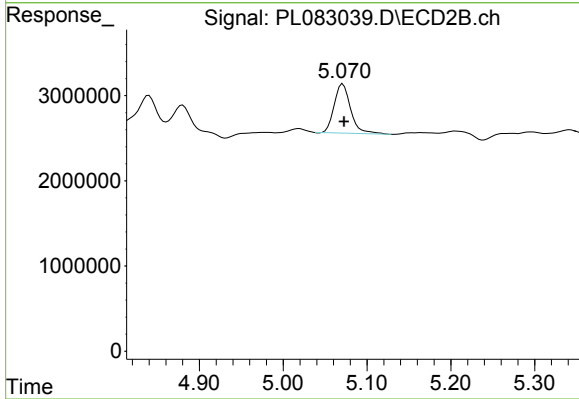
R.T.: 4.880 min
 Delta R.T.: -0.002 min
 Response: 6914453
 Conc: 2.30 ng/ml



#12 4,4'-DDE

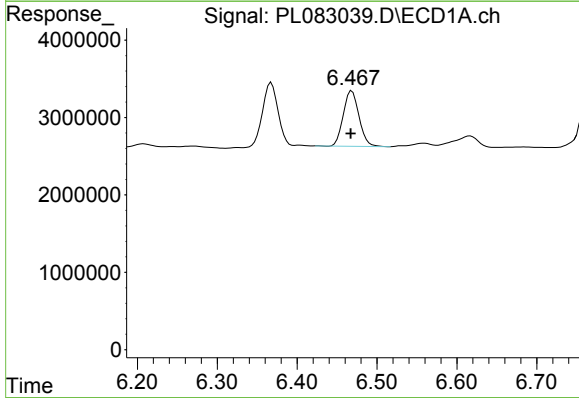
R.T.: 5.954 min
 Delta R.T.: 0.003 min
 Response: 7941336
 Conc: 2.88 ng/ml

Instrument :
 ECD_L
 ClientSampleId :
 RBR-251671DL



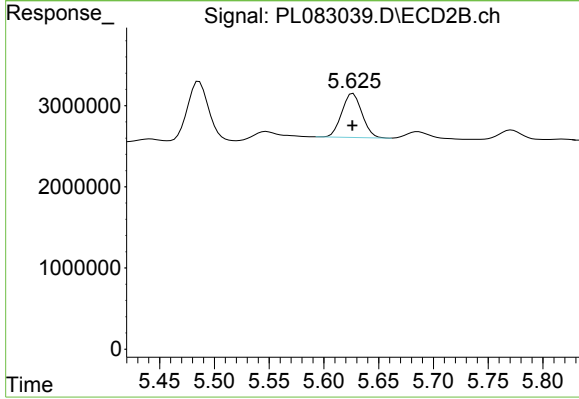
#12 4,4'-DDE

R.T.: 5.071 min
 Delta R.T.: -0.001 min
 Response: 7856861
 Conc: 3.23 ng/ml



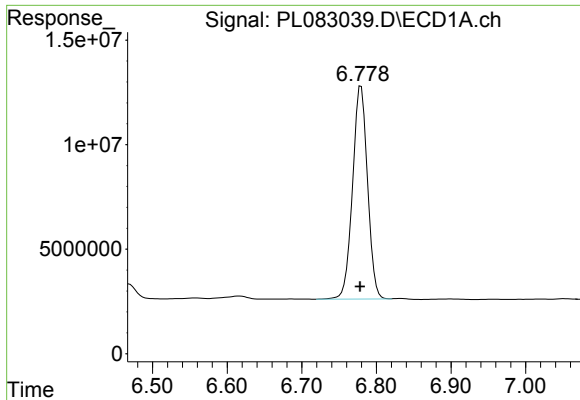
#16 4,4'-DDD

R.T.: 6.468 min
 Delta R.T.: 0.001 min
 Response: 9830347
 Conc: 4.52 ng/ml



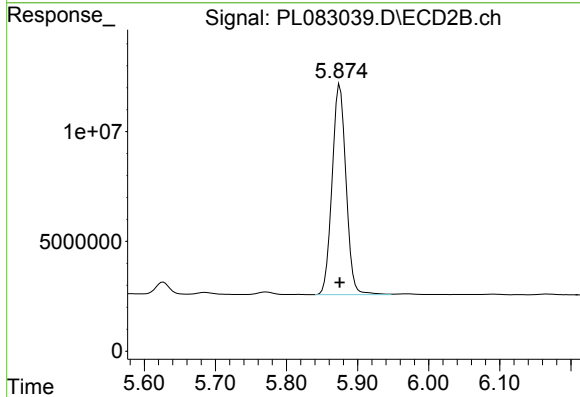
#16 4,4'-DDD

R.T.: 5.627 min
 Delta R.T.: 0.000 min
 Response: 6945193
 Conc: 3.61 ng/ml

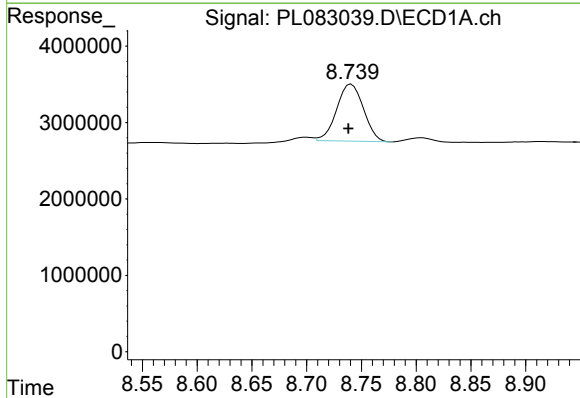


#17 4,4'-DDT
 R.T.: 6.779 min
 Delta R.T.: 0.002 min
 Response: 142008988
 Conc: 56.73 ng/ml

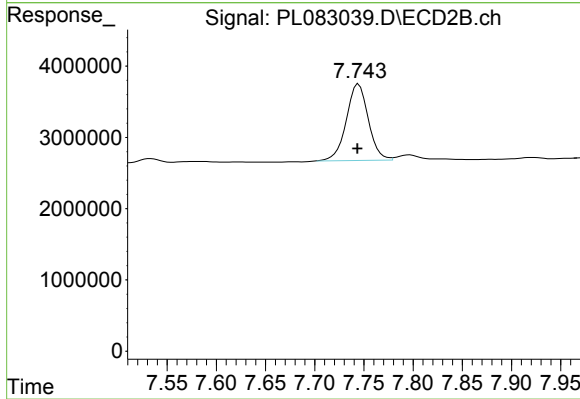
Instrument :
 ECD_L
 ClientSampleId :
 RBR-251671DL



#17 4,4'-DDT
 R.T.: 5.875 min
 Delta R.T.: 0.000 min
 Response: 130245044
 Conc: 58.38 ng/ml



#28 Decachlorobiphenyl
 R.T.: 8.741 min
 Delta R.T.: 0.003 min
 Response: 12716839
 Conc: 6.06 ng/ml



#28 Decachlorobiphenyl
 R.T.: 7.745 min
 Delta R.T.: 0.001 min
 Response: 16675258
 Conc: 6.71 ng/ml