

Data Path : Z:\pestpcbsrv\HPCHEM1\ECD\_L\Data\PL052623\  
 Data File : PL083060.D  
 Signal(s) : Signal #1: ECD1A.ch Signal #2: ECD2B.ch  
 Acq On : 26 May 2023 18:47  
 Operator : AR\AJ  
 Sample : 02945-04MSD  
 Misc :  
 ALS Vial : 26 Sample Multiplier: 1

Instrument :  
 ECD\_L  
 ClientSampleId :  
 SB17BMSD

Manual Integrations  
 APPROVED

Reviewed By :Abdul Mirza 05/30/2023  
 Supervised By :Ankita Jodhani 05/30/2023

Integration File signal 1: autoint1.e  
 Integration File signal 2: autoint2.e  
 Quant Time: May 26 21:59:56 2023  
 Quant Method : Z:\pestpcbsrv\HPCHEM1\ECD\_L\methods\PL051923.M  
 Quant Title : GC Extractables  
 QLast Update : Sat May 20 04:58:53 2023  
 Response via : Initial Calibration  
 Integrator: ChemStation

Volume Inj. : 1 µl  
 Signal #1 Phase : ZB-MR2 Signal #2 Phase: ZB-MR1  
 Signal #1 Info : 30M x 0.32mm x0.2 Signal #2 Info : 30M x 0.32mm x0.5µm

Compound	RT#1	RT#2	Resp#1	Resp#2	ng/ml	ng/ml
-----						
System Monitoring Compounds						
1) SA Tetrachlo...	3.316	2.636	47215853	41726513	16.065	16.073
28) SA Decachlor...	8.729	7.739	30457693	35509356	14.522	14.281
Target Compounds						
2) A alpha-BHC	3.765	3.132	171.9E6	145.2E6	38.727	38.923
3) MA gamma-BHC...	4.093	3.458	166.1E6	140.2E6	40.089	42.075
4) MA Heptachlor	4.670	3.789	148.8E6	139.2E6	38.920	38.033
5) MB Aldrin	5.006	4.065	148.1E6	133.4E6	42.094	40.996
6) B beta-BHC	4.297	3.759	73860426	57587277	39.230	40.268
7) B delta-BHC	4.537	3.984	156.9E6	135.2E6	45.633	41.267
8) Heptachlo...	5.432	4.566	133.3E6	122.2E6	41.683	41.172
9) A Endosulfan I	5.813	4.932	122.2E6	112.3E6	40.719	40.190
10) B gamma-Chl...	5.687	4.814	132.2E6	122.0E6	41.604	40.631
11) B alpha-Chl...	5.764	4.877	131.5E6	122.9E6	40.964	40.928
12) B 4,4'-DDE	5.943	5.068	114.5E6	103.9E6	41.522	42.786
13) MA Dieldrin	6.087	5.196	126.1E6	118.2E6	41.908	41.886
14) MA Endrin	6.314	5.470	110.2E6	103.4E6	41.021	40.738
15) B Endosulfa...	6.537	5.767	102.2E6	104.3E6	37.596	42.167
16) A 4,4'-DDD	6.459	5.622	93515891	81656558	43.034	42.458
17) MA 4,4'-DDT	6.770	5.869	97304938	90128992	38.873	40.398
18) B Endrin al...	6.665	5.947	89227727	84969151	44.378m	42.969
19) B Endosulfa...	6.901	6.170	106.6E6	100.5E6	41.594	41.027
20) A Methoxychlor	7.251	6.449	55683643	53721045	42.109	42.242
21) B Endrin ke...	7.380	6.674	110.3E6	114.7E6	43.254	42.412
22) Mirex	7.844	6.844	85126056	94753745	40.613	40.496
-----						

(f)=RT Delta > 1/2 Window (#)=Amounts differ by > 25% (m)=manual int.

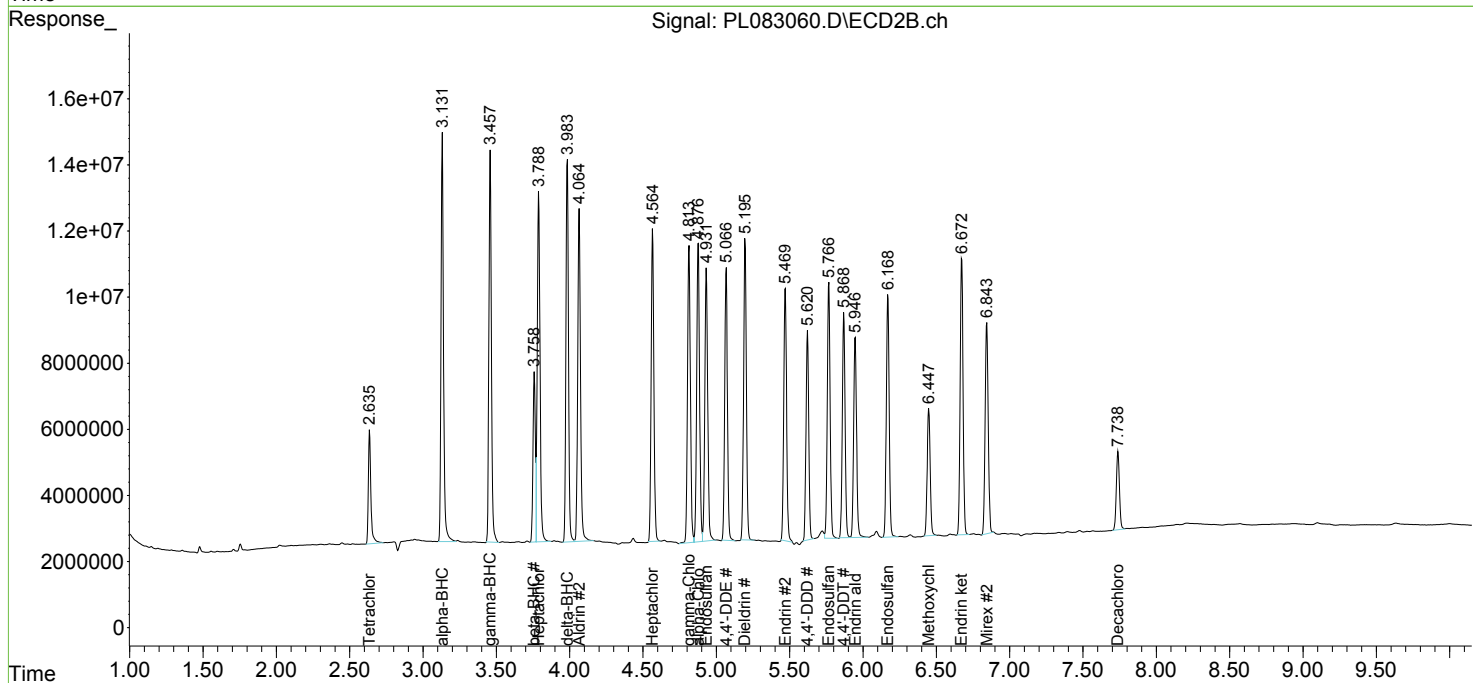
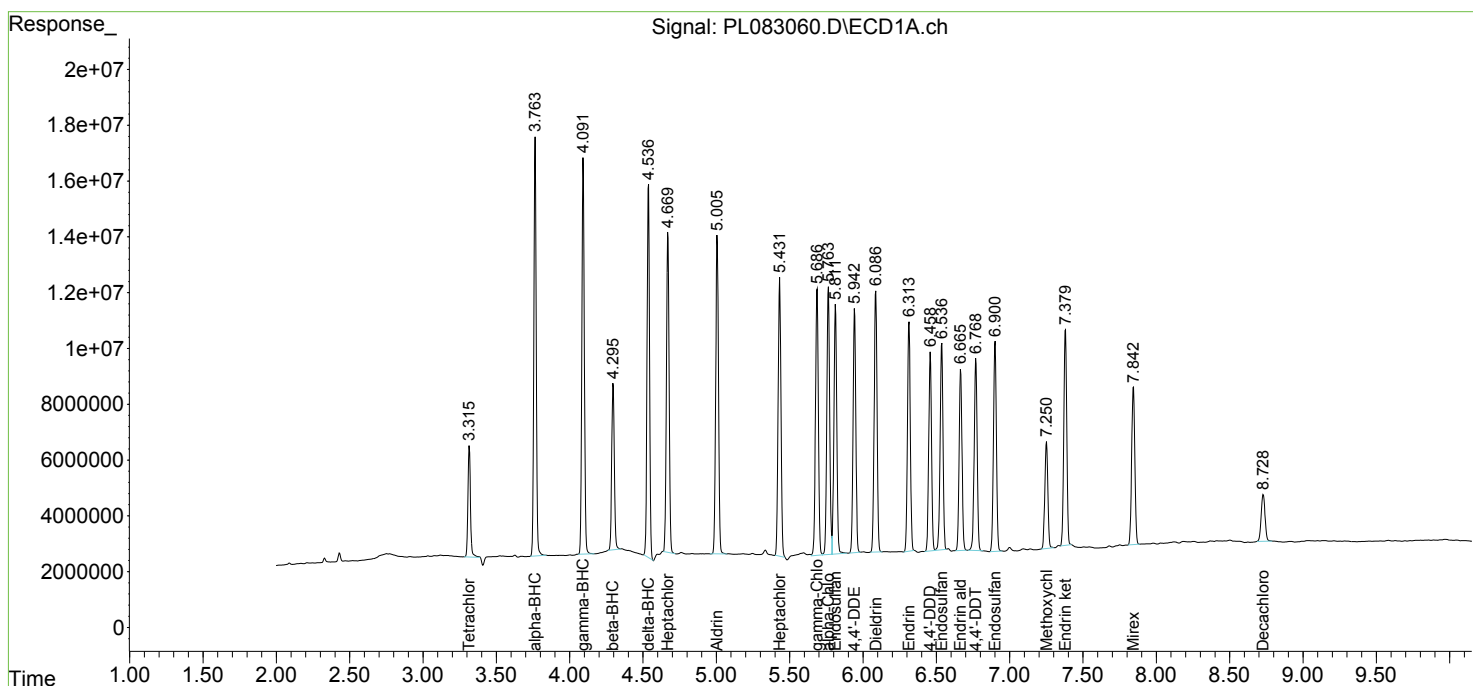
Data Path : Z:\pestpcbsrv\HPCHEM1\ECD\_L\Data\PL052623\  
 Data File : PL083060.D  
 Signal(s) : Signal #1: ECD1A.ch Signal #2: ECD2B.ch  
 Acq On : 26 May 2023 18:47  
 Operator : AR\AJ  
 Sample : 02945-04MSD  
 Misc :  
 ALS Vial : 26 Sample Multiplier: 1

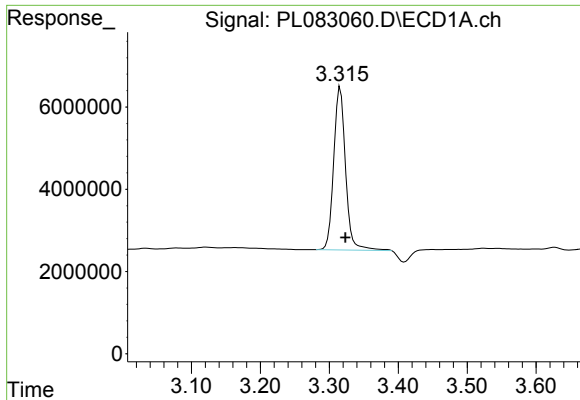
**Instrument :**  
 ECD\_L  
**ClientSampleId :**  
 SB17BMSD

**Manual Integrations**  
**APPROVED**  
 Reviewed By :Abdul Mirza 05/30/2023  
 Supervised By :Ankita Jodhani 05/30/2023

Integration File signal 1: autoint1.e  
 Integration File signal 2: autoint2.e  
 Quant Time: May 26 21:59:56 2023  
 Quant Method : Z:\pestpcbsrv\HPCHEM1\ECD\_L\methods\PL051923.M  
 Quant Title : GC Extractables  
 QLast Update : Sat May 20 04:58:53 2023  
 Response via : Initial Calibration  
 Integrator: ChemStation

Volume Inj. : 1 µl  
 Signal #1 Phase : ZB-MR2 Signal #2 Phase: ZB-MR1  
 Signal #1 Info : 30M x 0.32mm x0.2 Signal #2 Info : 30M x 0.32mm x0.5µm





#1 Tetrachloro-m-xylene

R.T.: 3.316 min  
 Delta R.T.: -0.007 min  
 Response: 47215853  
 Conc: 16.07 ng/ml

Instrument :

ECD\_L

ClientSampleId :

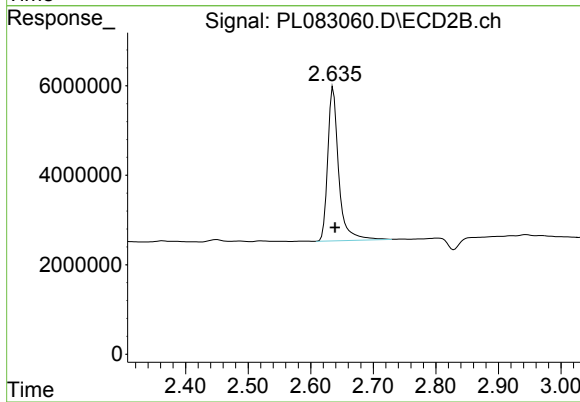
SB17BMSD

Manual Integrations

APPROVED

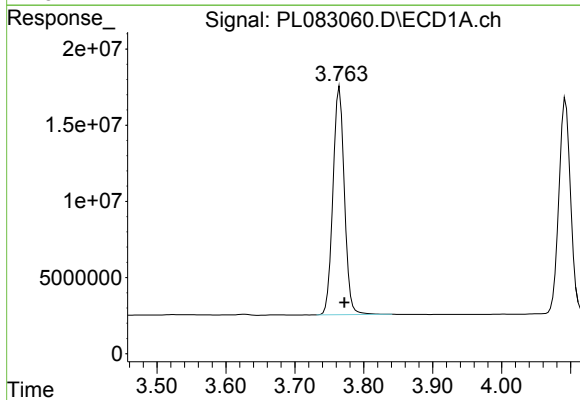
Reviewed By :Abdul Mirza 05/30/2023

Supervised By :Ankita Jodhani 05/30/2023



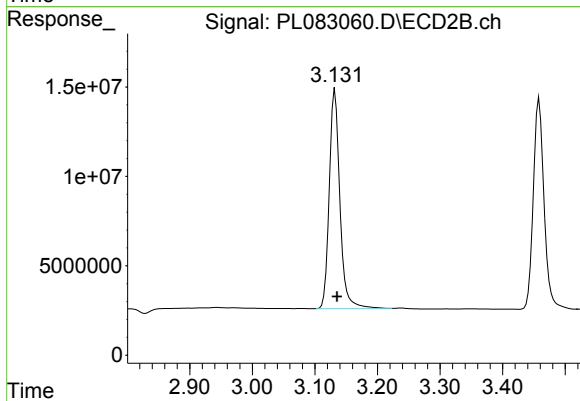
#1 Tetrachloro-m-xylene

R.T.: 2.636 min  
 Delta R.T.: -0.003 min  
 Response: 41726513  
 Conc: 16.07 ng/ml



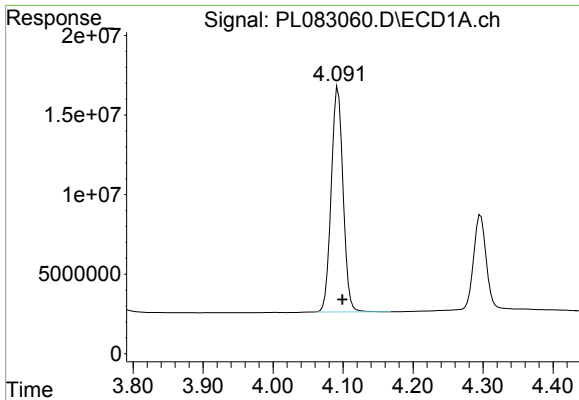
#2 alpha-BHC

R.T.: 3.765 min  
 Delta R.T.: -0.007 min  
 Response: 171918990  
 Conc: 38.73 ng/ml



#2 alpha-BHC

R.T.: 3.132 min  
 Delta R.T.: -0.003 min  
 Response: 145240415  
 Conc: 38.92 ng/ml

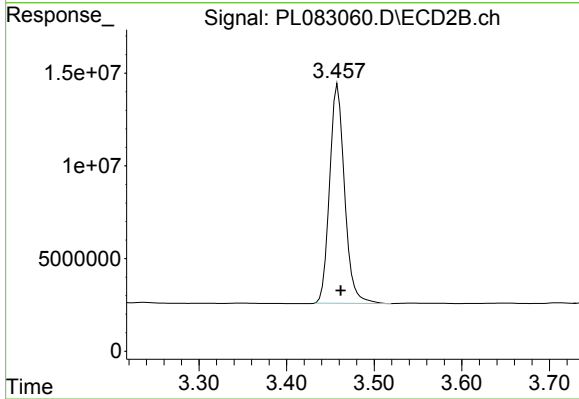


#3 gamma-BHC (Lindane)  
 R.T.: 4.093 min  
 Delta R.T.: -0.006 min  
 Response: 166087243  
 Conc: 40.09 ng/ml

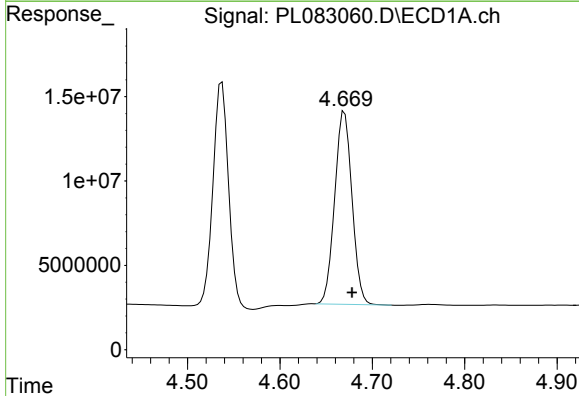
Instrument :  
 ECD\_L  
 ClientSampleId :  
 SB17BMSD

Manual Integrations  
 APPROVED

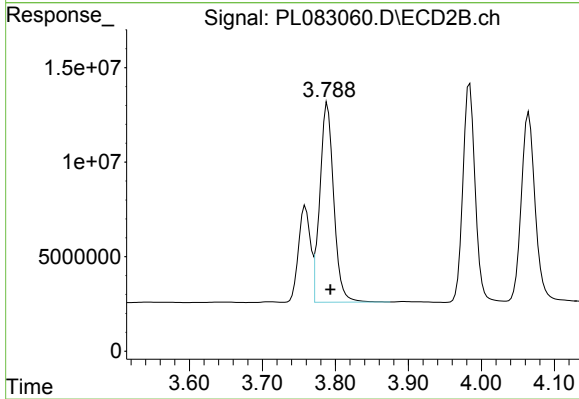
Reviewed By :Abdul Mirza 05/30/2023  
 Supervised By :Ankita Jodhani 05/30/2023



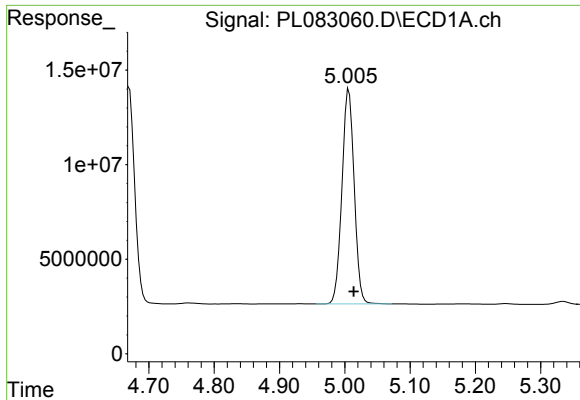
#3 gamma-BHC (Lindane)  
 R.T.: 3.458 min  
 Delta R.T.: -0.004 min  
 Response: 140247917  
 Conc: 42.07 ng/ml



#4 Heptachlor  
 R.T.: 4.670 min  
 Delta R.T.: -0.008 min  
 Response: 148770504  
 Conc: 38.92 ng/ml



#4 Heptachlor  
 R.T.: 3.789 min  
 Delta R.T.: -0.004 min  
 Response: 139241931  
 Conc: 38.03 ng/ml

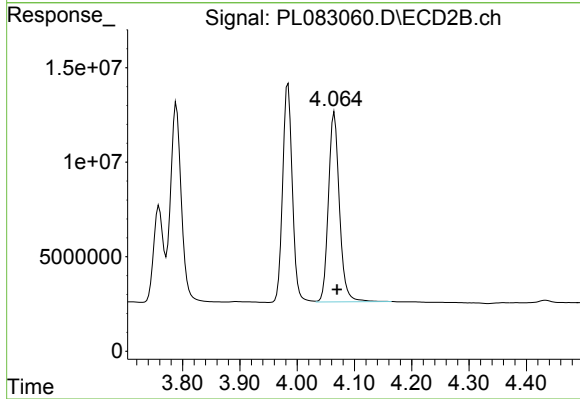


#5 Aldrin  
 R.T.: 5.006 min  
 Delta R.T.: -0.008 min  
 Response: 148090922  
 Conc: 42.09 ng/ml

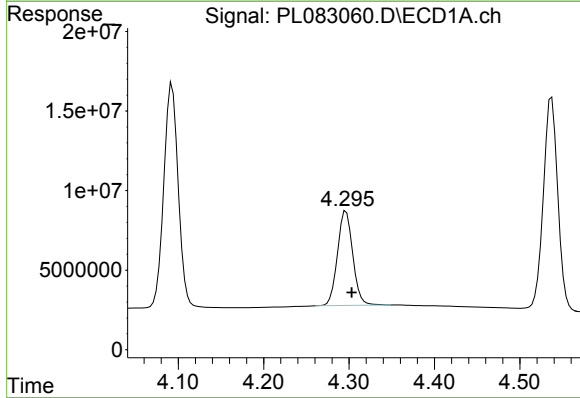
Instrument :  
 ECD\_L  
 ClientSampleId :  
 SB17BMSD

Manual Integrations  
 APPROVED

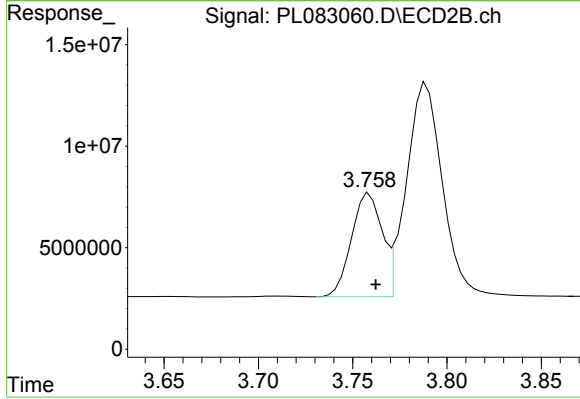
Reviewed By :Abdul Mirza 05/30/2023  
 Supervised By :Ankita Jodhani 05/30/2023



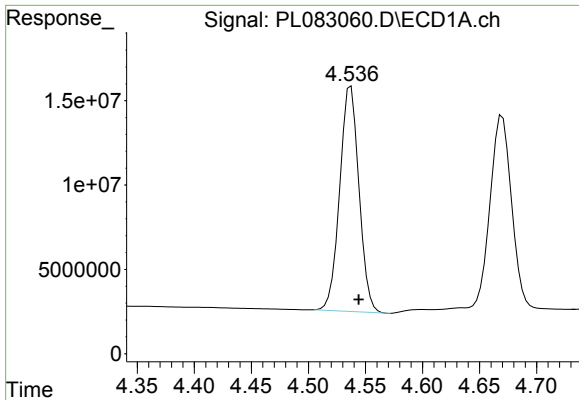
#5 Aldrin  
 R.T.: 4.065 min  
 Delta R.T.: -0.005 min  
 Response: 133384978  
 Conc: 41.00 ng/ml



#6 beta-BHC  
 R.T.: 4.297 min  
 Delta R.T.: -0.006 min  
 Response: 73860426  
 Conc: 39.23 ng/ml



#6 beta-BHC  
 R.T.: 3.759 min  
 Delta R.T.: -0.003 min  
 Response: 57587277  
 Conc: 40.27 ng/ml



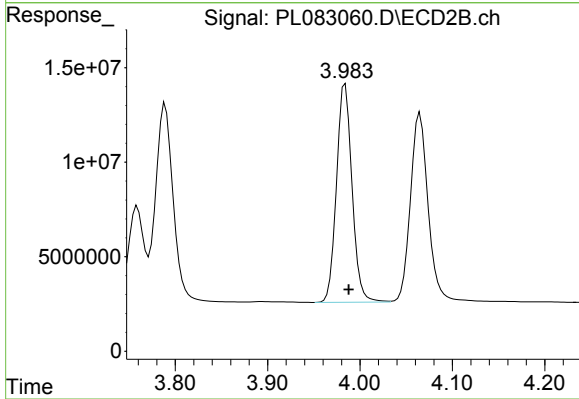
#7 delta-BHC

R.T.: 4.537 min  
 Delta R.T.: -0.007 min  
 Response: 156928101  
 Conc: 45.63 ng/ml

Instrument :  
 ECD\_L  
 ClientSampleId :  
 SB17BMSD

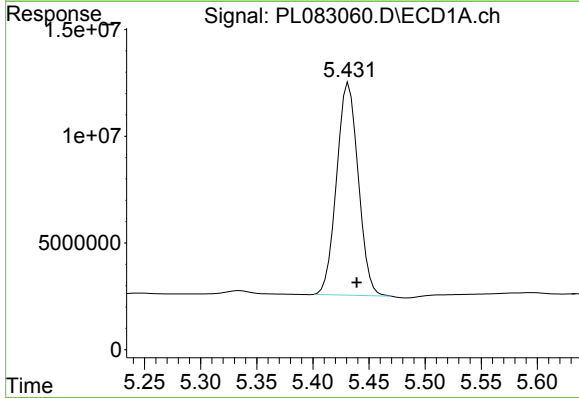
Manual Integrations  
 APPROVED

Reviewed By :Abdul Mirza 05/30/2023  
 Supervised By :Ankita Jodhani 05/30/2023



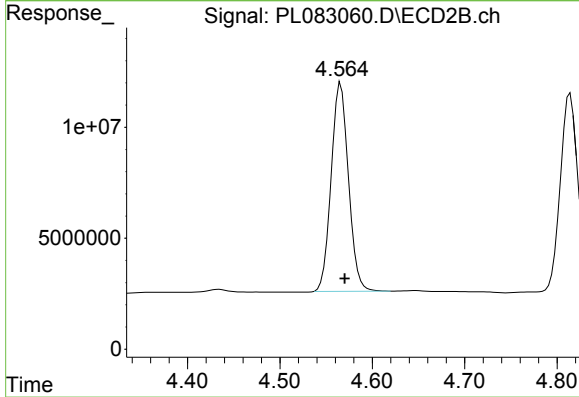
#7 delta-BHC

R.T.: 3.984 min  
 Delta R.T.: -0.004 min  
 Response: 135210920  
 Conc: 41.27 ng/ml



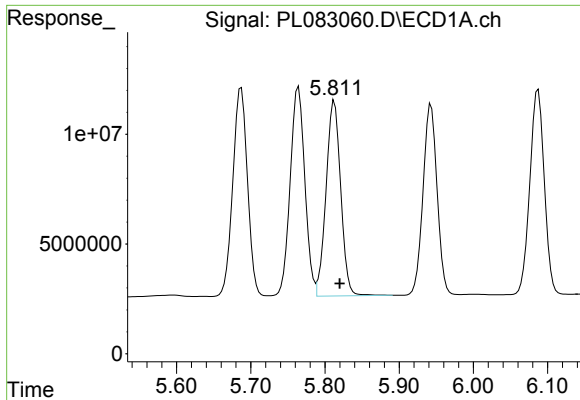
#8 Heptachlor epoxide

R.T.: 5.432 min  
 Delta R.T.: -0.007 min  
 Response: 133331311  
 Conc: 41.68 ng/ml



#8 Heptachlor epoxide

R.T.: 4.566 min  
 Delta R.T.: -0.004 min  
 Response: 122192835  
 Conc: 41.17 ng/ml



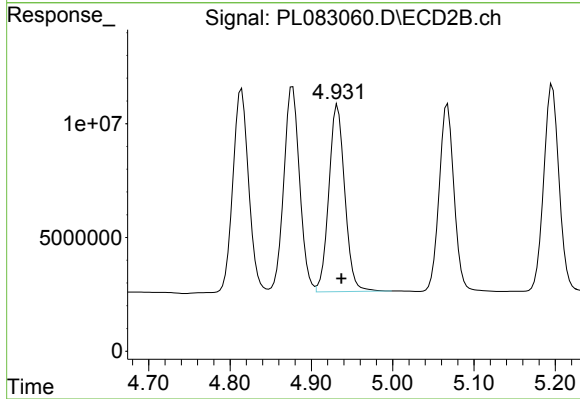
#9 Endosulfan I

R.T.: 5.813 min  
 Delta R.T.: -0.007 min  
 Response: 122181688  
 Conc: 40.72 ng/ml

Instrument :  
 ECD\_L  
 ClientSampleId :  
 SB17BMSD

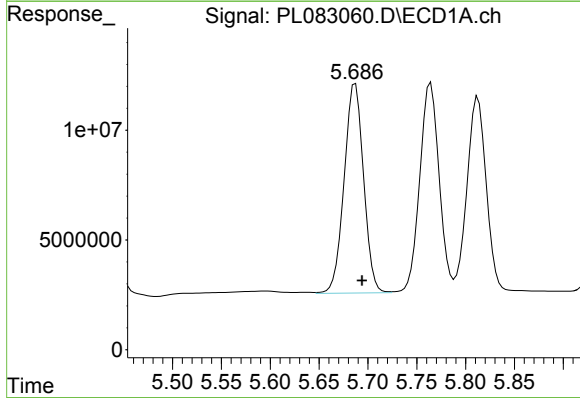
Manual Integrations  
 APPROVED

Reviewed By :Abdul Mirza 05/30/2023  
 Supervised By :Ankita Jodhani 05/30/2023



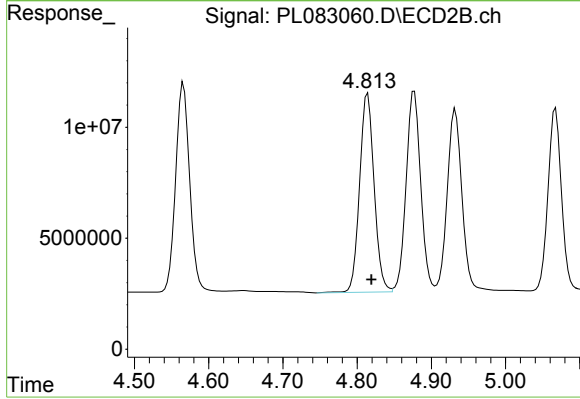
#9 Endosulfan I

R.T.: 4.932 min  
 Delta R.T.: -0.005 min  
 Response: 112305250  
 Conc: 40.19 ng/ml



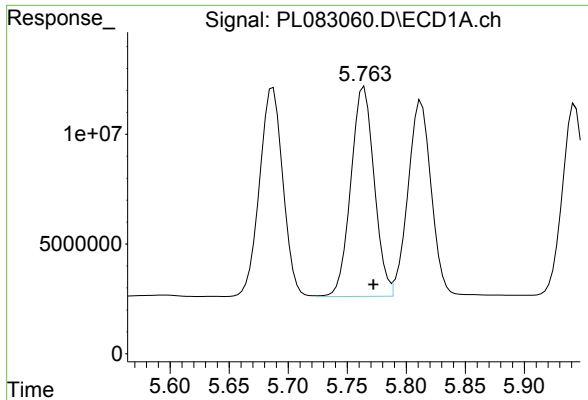
#10 gamma-Chlordane

R.T.: 5.687 min  
 Delta R.T.: -0.007 min  
 Response: 132174420  
 Conc: 41.60 ng/ml



#10 gamma-Chlordane

R.T.: 4.814 min  
 Delta R.T.: -0.005 min  
 Response: 122032067  
 Conc: 40.63 ng/ml



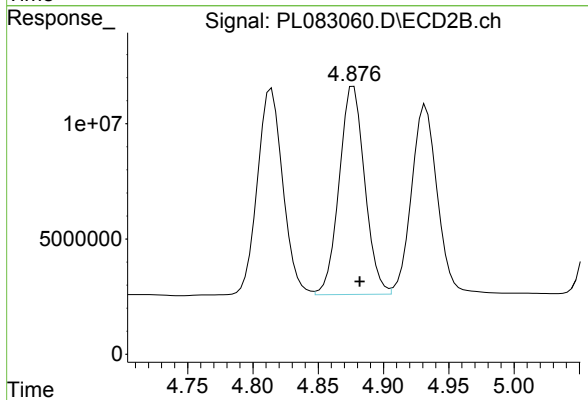
#11 alpha-Chlordane

R.T.: 5.764 min  
 Delta R.T.: -0.008 min  
 Response: 131465571  
 Conc: 40.96 ng/ml

Instrument :  
 ECD\_L  
 ClientSampleId :  
 SB17BMSD

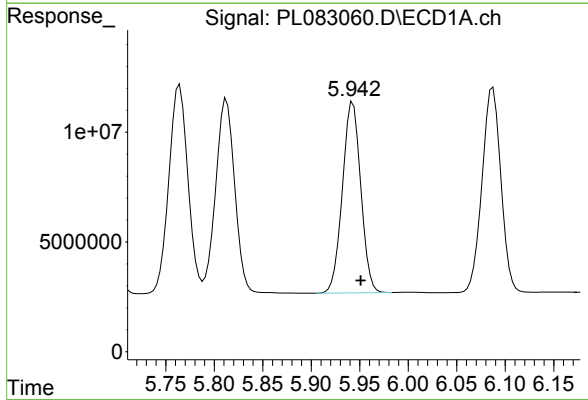
Manual Integrations  
 APPROVED

Reviewed By :Abdul Mirza 05/30/2023  
 Supervised By :Ankita Jodhani 05/30/2023



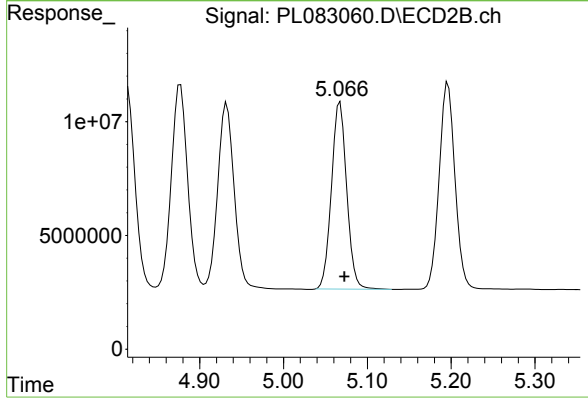
#11 alpha-Chlordane

R.T.: 4.877 min  
 Delta R.T.: -0.005 min  
 Response: 122863583  
 Conc: 40.93 ng/ml



#12 4,4'-DDE

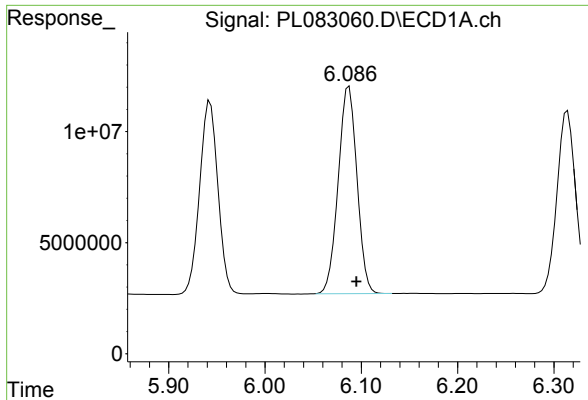
R.T.: 5.943 min  
 Delta R.T.: -0.008 min  
 Response: 114456124  
 Conc: 41.52 ng/ml



#12 4,4'-DDE

R.T.: 5.068 min  
 Delta R.T.: -0.005 min  
 Response: 103917279  
 Conc: 42.79 ng/ml





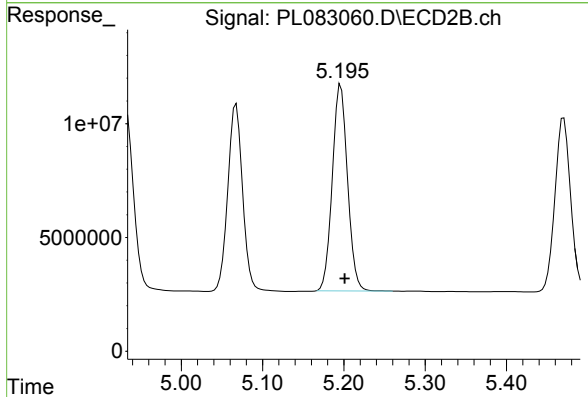
#13 Dieldrin

R.T.: 6.087 min  
 Delta R.T.: -0.008 min  
 Response: 126052744  
 Conc: 41.91 ng/ml

Instrument :  
 ECD\_L  
 ClientSampleId :  
 SB17BMSD

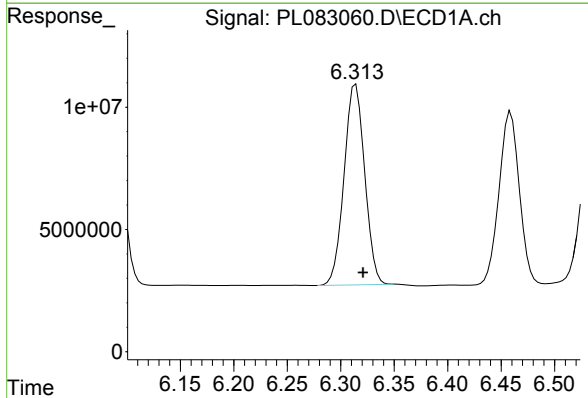
Manual Integrations  
 APPROVED

Reviewed By :Abdul Mirza 05/30/2023  
 Supervised By :Ankita Jodhani 05/30/2023



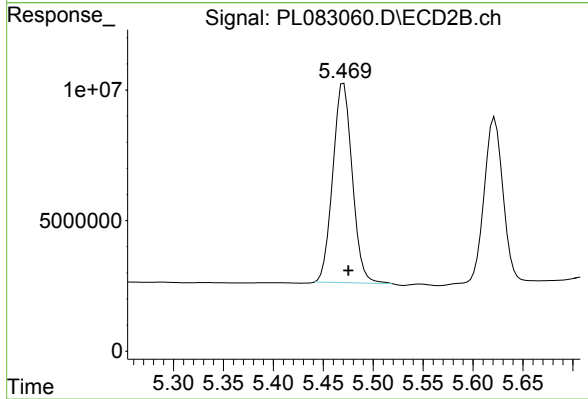
#13 Dieldrin

R.T.: 5.196 min  
 Delta R.T.: -0.005 min  
 Response: 118242176  
 Conc: 41.89 ng/ml



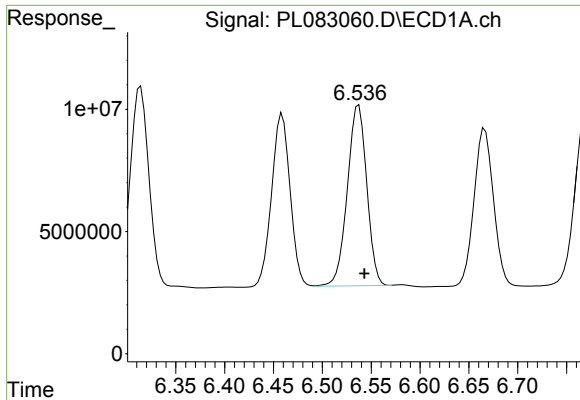
#14 Endrin

R.T.: 6.314 min  
 Delta R.T.: -0.007 min  
 Response: 110233277  
 Conc: 41.02 ng/ml



#14 Endrin

R.T.: 5.470 min  
 Delta R.T.: -0.005 min  
 Response: 103351072  
 Conc: 40.74 ng/ml



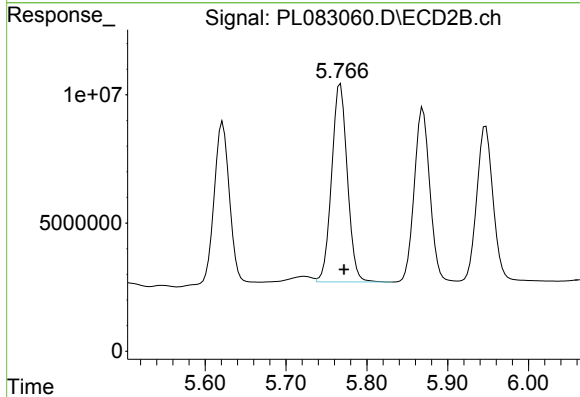
#15 Endosulfan II

R.T.: 6.537 min  
 Delta R.T.: -0.006 min  
 Response: 102216511  
 Conc: 37.60 ng/ml

Instrument :  
 ECD\_L  
 ClientSampleId :  
 SB17BMSD

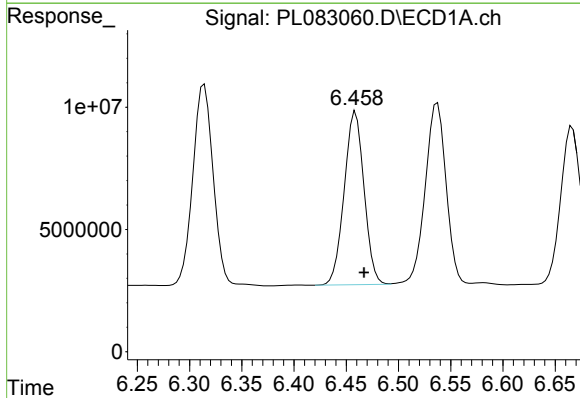
Manual Integrations  
 APPROVED

Reviewed By :Abdul Mirza 05/30/2023  
 Supervised By :Ankita Jodhani 05/30/2023



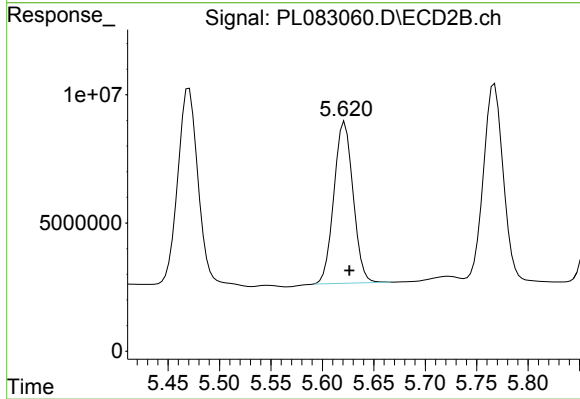
#15 Endosulfan II

R.T.: 5.767 min  
 Delta R.T.: -0.005 min  
 Response: 104329253  
 Conc: 42.17 ng/ml



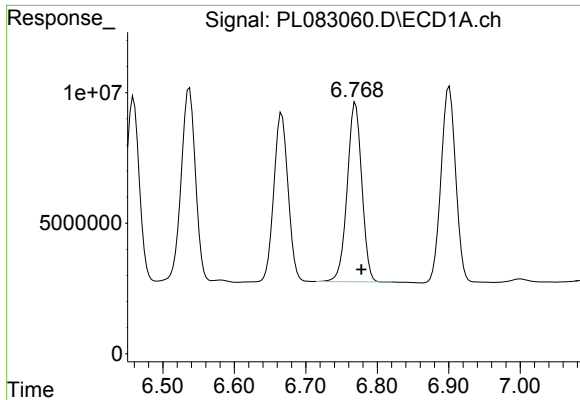
#16 4,4'-DDD

R.T.: 6.459 min  
 Delta R.T.: -0.008 min  
 Response: 93515891  
 Conc: 43.03 ng/ml



#16 4,4'-DDD

R.T.: 5.622 min  
 Delta R.T.: -0.004 min  
 Response: 81656558  
 Conc: 42.46 ng/ml



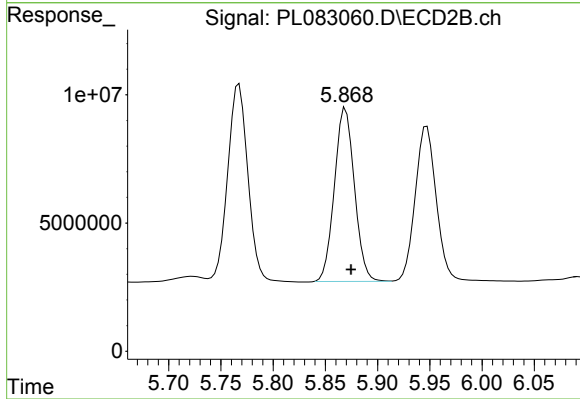
#17 4,4'-DDT

R.T.: 6.770 min  
 Delta R.T.: -0.008 min  
 Response: 97304938  
 Conc: 38.87 ng/ml

Instrument :  
 ECD\_L  
 ClientSampleId :  
 SB17BMSD

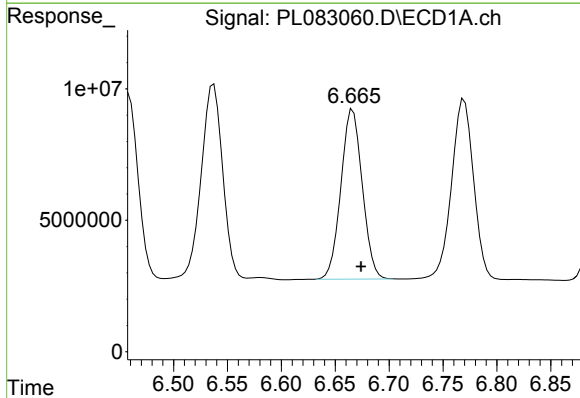
Manual Integrations  
 APPROVED

Reviewed By :Abdul Mirza 05/30/2023  
 Supervised By :Ankita Jodhani 05/30/2023



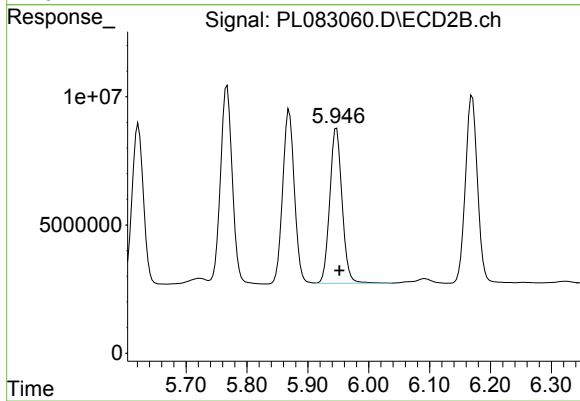
#17 4,4'-DDT

R.T.: 5.869 min  
 Delta R.T.: -0.005 min  
 Response: 90128992  
 Conc: 40.40 ng/ml



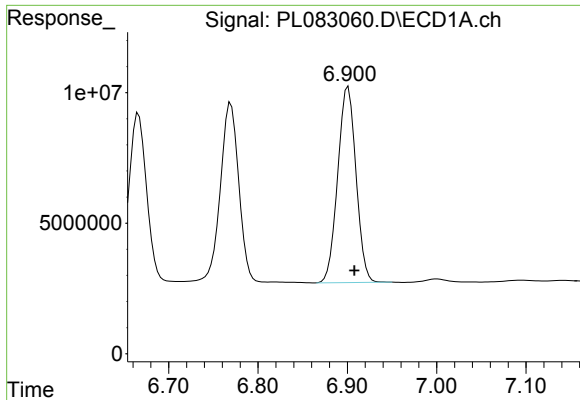
#18 Endrin aldehyde

R.T.: 6.665 min  
 Delta R.T.: -0.009 min  
 Response: 89227727  
 Conc: 44.38 ng/ml m



#18 Endrin aldehyde

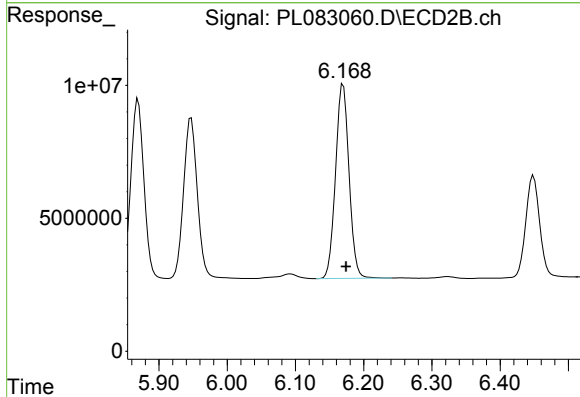
R.T.: 5.947 min  
 Delta R.T.: -0.005 min  
 Response: 84969151  
 Conc: 42.97 ng/ml



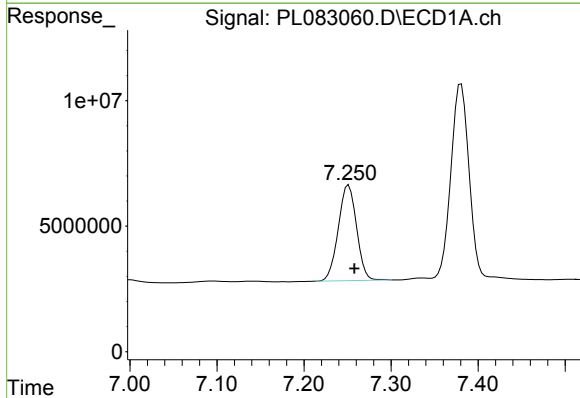
#19 Endosulfan Sulfate  
 R.T.: 6.901 min  
 Delta R.T.: -0.007 min  
 Response: 106634449  
 Conc: 41.59 ng/ml

Instrument :  
 ECD\_L  
 ClientSampleId :  
 SB17BMSD

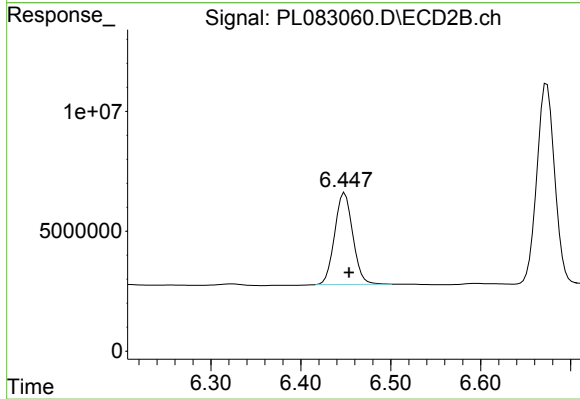
Manual Integrations  
**APPROVED**  
 Reviewed By :Abdul Mirza 05/30/2023  
 Supervised By :Ankita Jodhani 05/30/2023



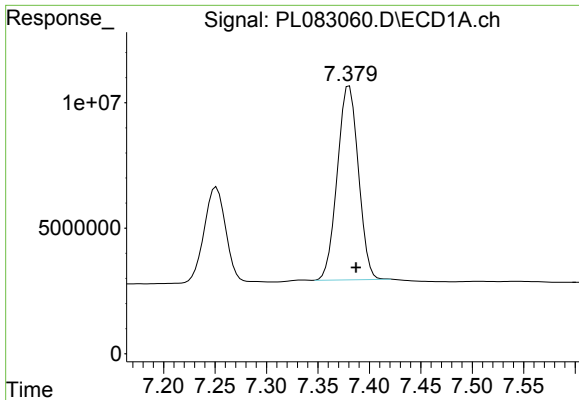
#19 Endosulfan Sulfate  
 R.T.: 6.170 min  
 Delta R.T.: -0.004 min  
 Response: 100474179  
 Conc: 41.03 ng/ml



#20 Methoxychlor  
 R.T.: 7.251 min  
 Delta R.T.: -0.007 min  
 Response: 55683643  
 Conc: 42.11 ng/ml



#20 Methoxychlor  
 R.T.: 6.449 min  
 Delta R.T.: -0.005 min  
 Response: 53721045  
 Conc: 42.24 ng/ml



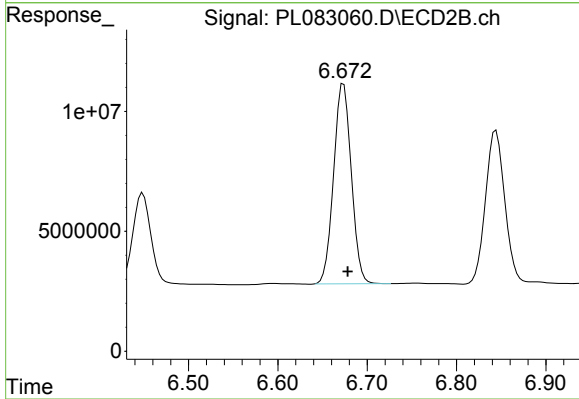
#21 Endrin ketone

R.T.: 7.380 min  
 Delta R.T.: -0.007 min  
 Response: 110332099  
 Conc: 43.25 ng/ml

Instrument :  
 ECD\_L  
 ClientSampleId :  
 SB17BMSD

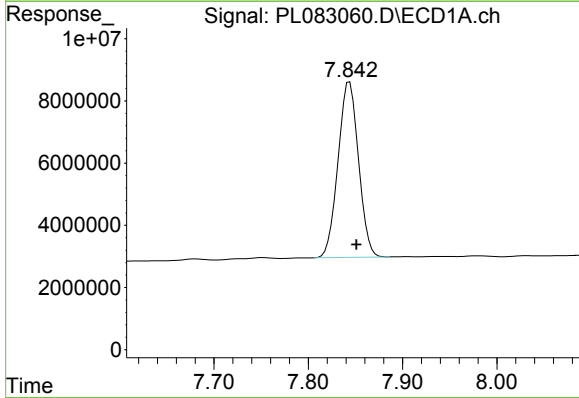
Manual Integrations  
 APPROVED

Reviewed By :Abdul Mirza 05/30/2023  
 Supervised By :Ankita Jodhani 05/30/2023



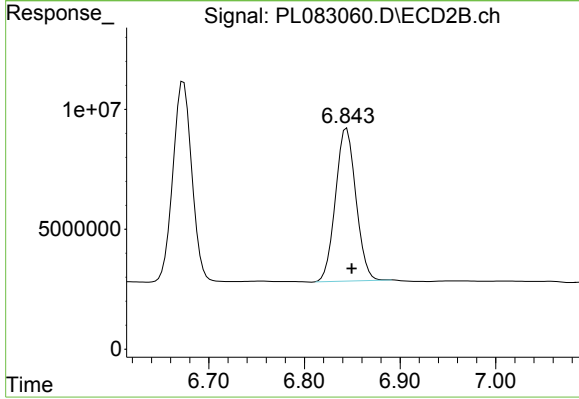
#21 Endrin ketone

R.T.: 6.674 min  
 Delta R.T.: -0.005 min  
 Response: 114676280  
 Conc: 42.41 ng/ml



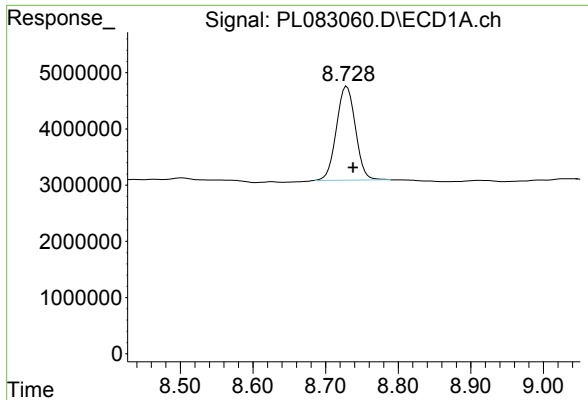
#22 Mirex

R.T.: 7.844 min  
 Delta R.T.: -0.007 min  
 Response: 85126056  
 Conc: 40.61 ng/ml



#22 Mirex

R.T.: 6.844 min  
 Delta R.T.: -0.005 min  
 Response: 94753745  
 Conc: 40.50 ng/ml

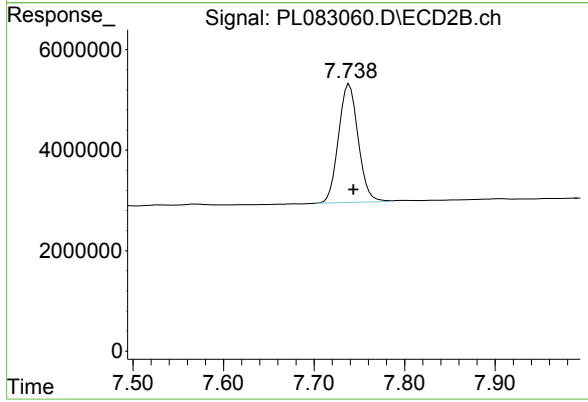


#28 Decachlorobiphenyl  
R.T.: 8.729 min  
Delta R.T.: -0.009 min  
Response: 30457693  
Conc: 14.52 ng/ml

Instrument :  
ECD\_L  
ClientSampleId :  
SB17BMSD

Manual Integrations  
APPROVED

Reviewed By :Abdul Mirza 05/30/2023  
Supervised By :Ankita Jodhani 05/30/2023



#28 Decachlorobiphenyl  
R.T.: 7.739 min  
Delta R.T.: -0.005 min  
Response: 35509356  
Conc: 14.28 ng/ml