

Data Path : Z:\pestpcbsrv\HPCHEM1\ECD\_L\Data\PL052623\  
 Data File : PL083062.D  
 Signal(s) : Signal #1: ECD1A.ch Signal #2: ECD2B.ch  
 Acq On : 26 May 2023 19:15  
 Operator : AR\AJ  
 Sample : I.BLK  
 Misc :  
 ALS Vial : 2 Sample Multiplier: 1

Instrument :  
 ECD\_L  
 ClientSampleId :  
 I.BLK

Integration File signal 1: autoint1.e  
 Integration File signal 2: autoint2.e  
 Quant Time: May 26 22:01:08 2023  
 Quant Method : Z:\pestpcbsrv\HPCHEM1\ECD\_L\methods\PL051923.M  
 Quant Title : GC Extractables  
 QLast Update : Sat May 20 04:58:53 2023  
 Response via : Initial Calibration  
 Integrator: ChemStation

Volume Inj. : 1 µl  
 Signal #1 Phase : ZB-MR2 Signal #2 Phase: ZB-MR1  
 Signal #1 Info : 30M x 0.32mm x0.2 Signal #2 Info : 30M x 0.32mm x0.5µm

Compound	RT#1	RT#2	Resp#1	Resp#2	ng/ml	ng/ml
-----						
System Monitoring Compounds						
1) SA Tetrachlo...	3.316	2.636	49829950	45227915	16.955	17.422
28) SA Decachlor...	8.730	7.738	40145067	49045250	19.141	19.724

Target Compounds

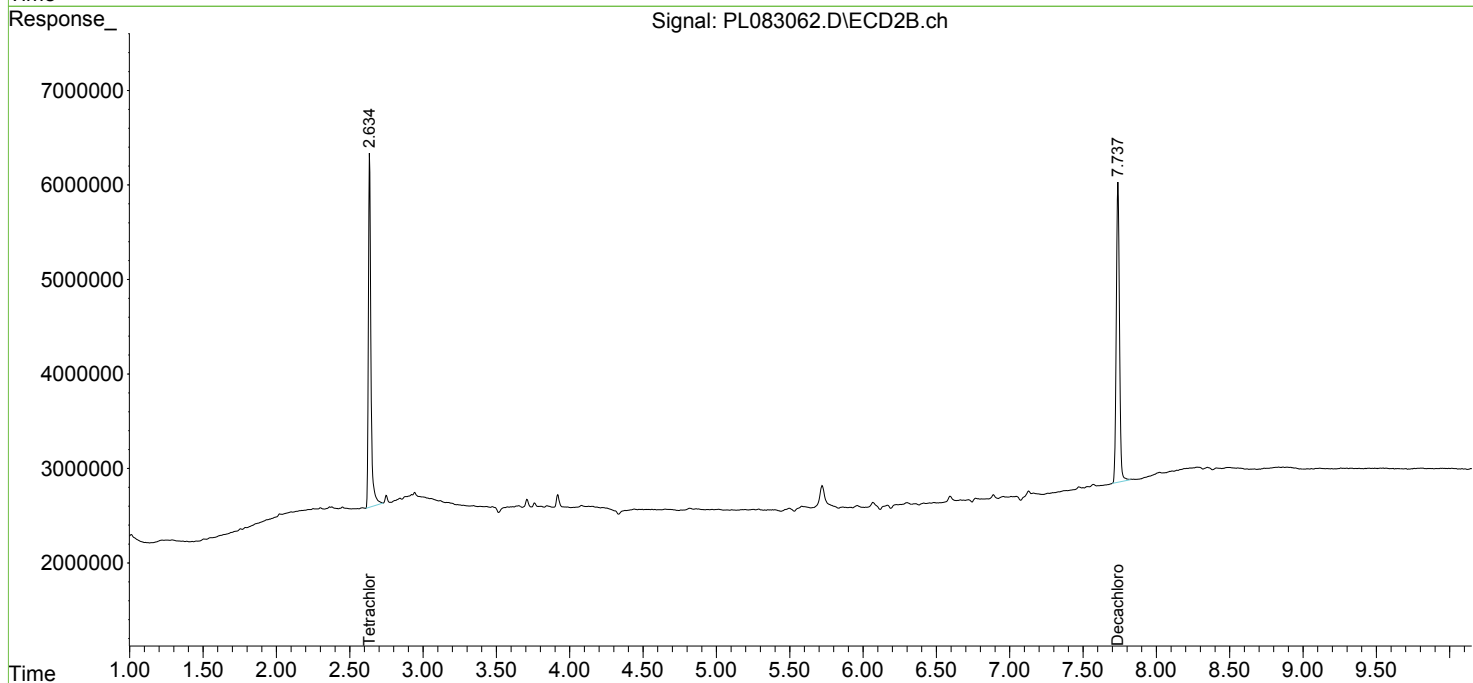
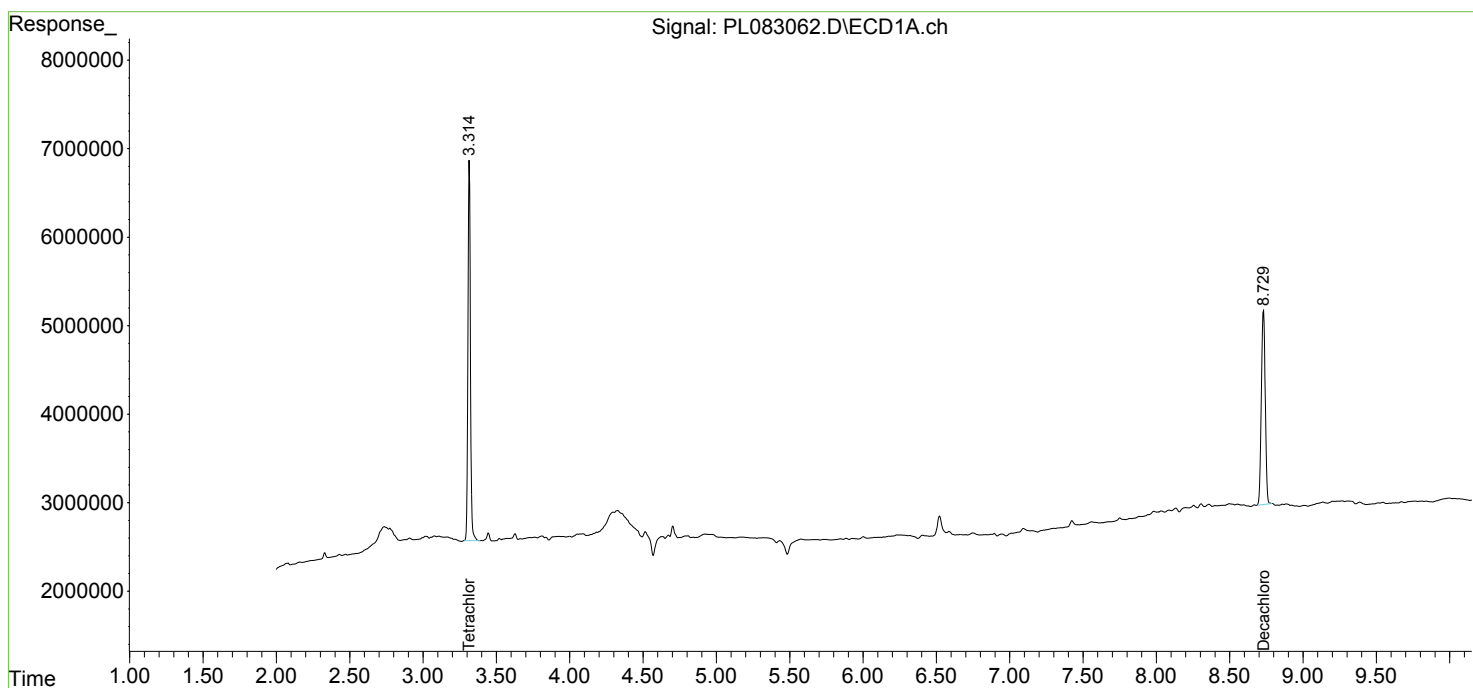
(f)=RT Delta > 1/2 Window (#)=Amounts differ by > 25% (m)=manual int.

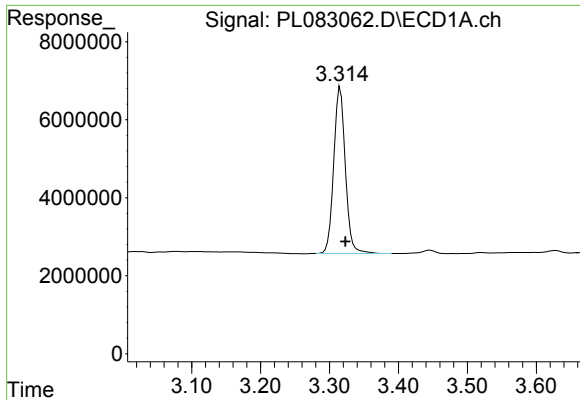
Data Path : Z:\pestpcbsrv\HPCHEM1\ECD\_L\Data\PL052623\  
 Data File : PL083062.D  
 Signal(s) : Signal #1: ECD1A.ch Signal #2: ECD2B.ch  
 Acq On : 26 May 2023 19:15  
 Operator : AR\AJ  
 Sample : I.BLK  
 Misc :  
 ALS Vial : 2 Sample Multiplier: 1

Instrument :  
 ECD\_L  
 ClientSampleId :  
 I.BLK

Integration File signal 1: autoint1.e  
 Integration File signal 2: autoint2.e  
 Quant Time: May 26 22:01:08 2023  
 Quant Method : Z:\pestpcbsrv\HPCHEM1\ECD\_L\methods\PL051923.M  
 Quant Title : GC Extractables  
 QLast Update : Sat May 20 04:58:53 2023  
 Response via : Initial Calibration  
 Integrator: ChemStation

Volume Inj. : 1 µl  
 Signal #1 Phase : ZB-MR2 Signal #2 Phase: ZB-MR1  
 Signal #1 Info : 30M x 0.32mm x0.2 Signal #2 Info : 30M x 0.32mm x0.5µm

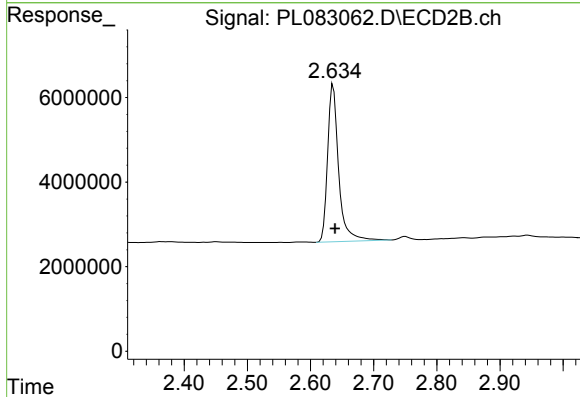




#1 Tetrachloro-m-xylene

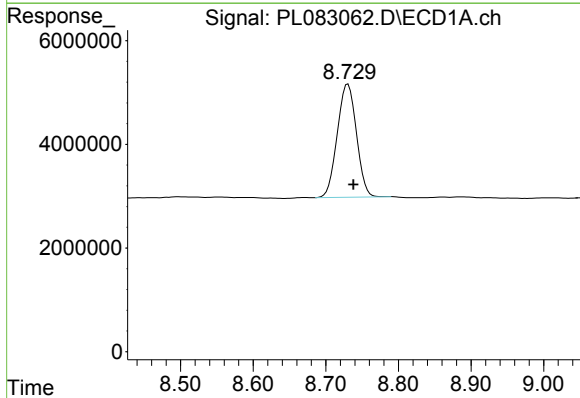
R.T.: 3.316 min  
Delta R.T.: -0.007 min  
Response: 49829950  
Conc: 16.95 ng/ml

Instrument :  
ECD\_L  
ClientSampleId :  
I.BLK



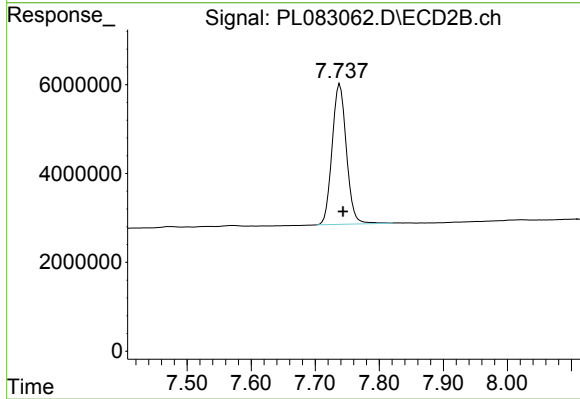
#1 Tetrachloro-m-xylene

R.T.: 2.636 min  
Delta R.T.: -0.003 min  
Response: 45227915  
Conc: 17.42 ng/ml



#28 Decachlorobiphenyl

R.T.: 8.730 min  
Delta R.T.: -0.008 min  
Response: 40145067  
Conc: 19.14 ng/ml



#28 Decachlorobiphenyl

R.T.: 7.738 min  
Delta R.T.: -0.005 min  
Response: 49045250  
Conc: 19.72 ng/ml