

Data Path : Z:\pestpcbsrv\HPCHEM1\ECD_L\Data\PL052623\
 Data File : PL083064.D
 Signal(s) : Signal #1: ECD1A.ch Signal #2: ECD2B.ch
 Acq On : 26 May 2023 20:25
 Operator : AR\AJ
 Sample : PB153077BL
 Misc :
 ALS Vial : 28 Sample Multiplier: 1

Instrument :
 ECD_L
 ClientSampleId :
 PB153077BL

Integration File signal 1: autoint1.e
 Integration File signal 2: autoint2.e
 Quant Time: May 26 22:01:42 2023
 Quant Method : Z:\pestpcbsrv\HPCHEM1\ECD_L\methods\PL051923.M
 Quant Title : GC Extractables
 QLast Update : Sat May 20 04:58:53 2023
 Response via : Initial Calibration
 Integrator: ChemStation

Volume Inj. : 1 µl
 Signal #1 Phase : ZB-MR2 Signal #2 Phase: ZB-MR1
 Signal #1 Info : 30M x 0.32mm x0.2 Signal #2 Info : 30M x 0.32mm x0.5µm

Compound	RT#1	RT#2	Resp#1	Resp#2	ng/ml	ng/ml

System Monitoring Compounds						
1) SA Tetrachlo...	3.316	2.636	58024014	51815095	19.743	19.959
28) SA Decachlor...	8.729	7.738	46917004	56252170	22.370	22.623

Target Compounds

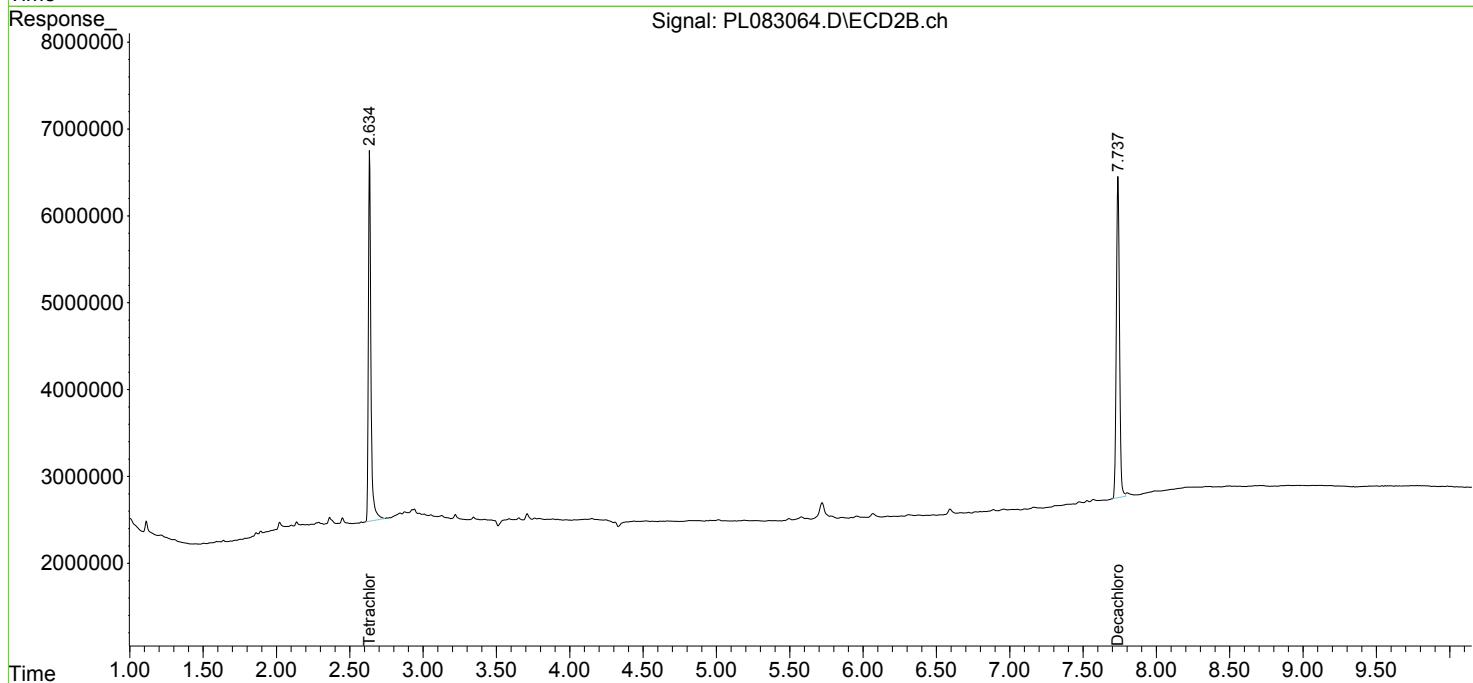
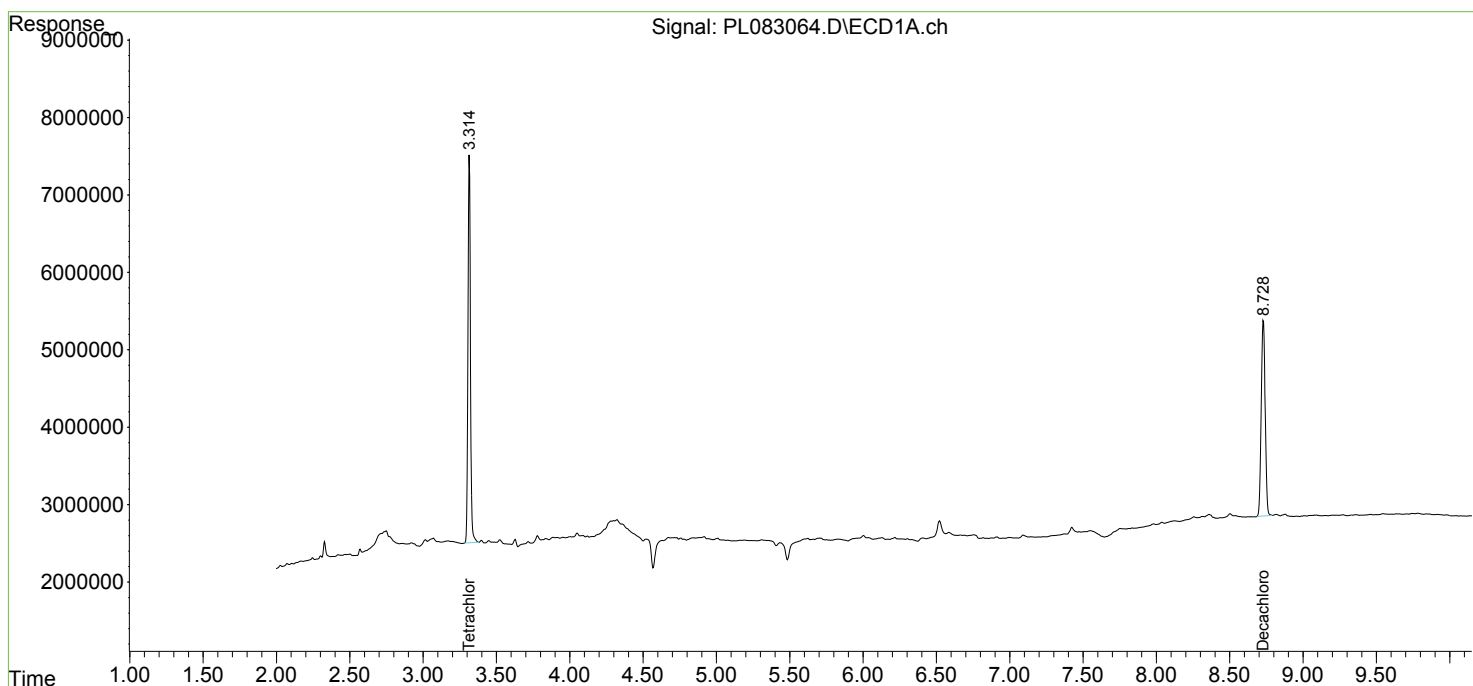
 (f)=RT Delta > 1/2 Window (#)=Amounts differ by > 25% (m)=manual int.

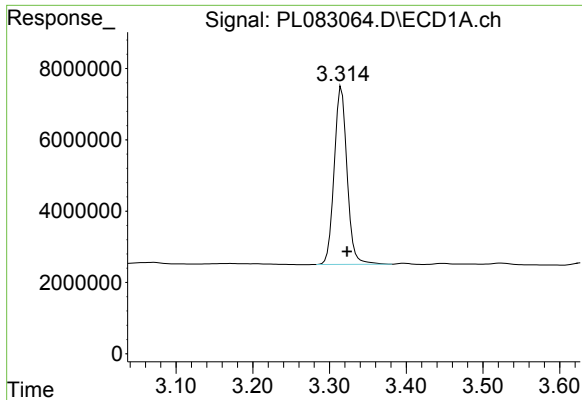
Data Path : Z:\pestpcbsrv\HPCHEM1\ECD_L\Data\PL052623\
 Data File : PL083064.D
 Signal(s) : Signal #1: ECD1A.ch Signal #2: ECD2B.ch
 Acq On : 26 May 2023 20:25
 Operator : AR\AJ
 Sample : PB153077BL
 Misc :
 ALS Vial : 28 Sample Multiplier: 1

Instrument :
 ECD_L
 ClientSampleId :
 PB153077BL

Integration File signal 1: autoint1.e
 Integration File signal 2: autoint2.e
 Quant Time: May 26 22:01:42 2023
 Quant Method : Z:\pestpcbsrv\HPCHEM1\ECD_L\methods\PL051923.M
 Quant Title : GC Extractables
 QLast Update : Sat May 20 04:58:53 2023
 Response via : Initial Calibration
 Integrator: ChemStation

Volume Inj. : 1 µl
 Signal #1 Phase : ZB-MR2 Signal #2 Phase: ZB-MR1
 Signal #1 Info : 30M x 0.32mm x0.2 Signal #2 Info : 30M x 0.32mm x0.5µm

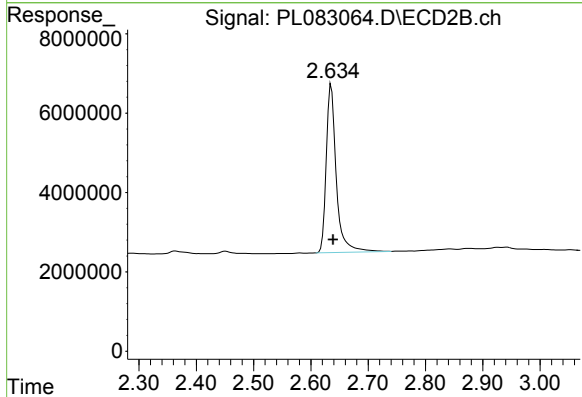




#1 Tetrachloro-m-xylene

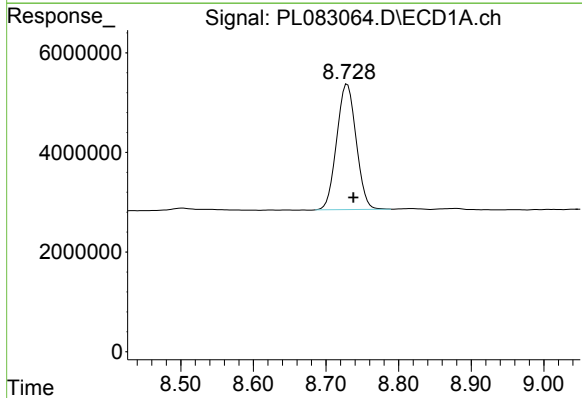
R.T.: 3.316 min
 Delta R.T.: -0.007 min
 Response: 58024014
 Conc: 19.74 ng/ml

Instrument :
 ECD_L
 ClientSampleId :
 PB153077BL



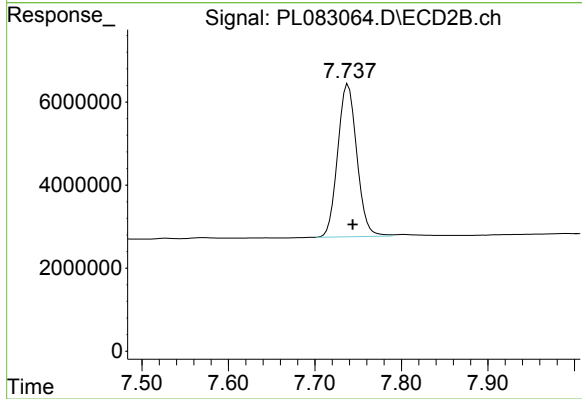
#1 Tetrachloro-m-xylene

R.T.: 2.636 min
 Delta R.T.: -0.003 min
 Response: 51815095
 Conc: 19.96 ng/ml



#28 Decachlorobiphenyl

R.T.: 8.729 min
 Delta R.T.: -0.009 min
 Response: 46917004
 Conc: 22.37 ng/ml



#28 Decachlorobiphenyl

R.T.: 7.738 min
 Delta R.T.: -0.005 min
 Response: 56252170
 Conc: 22.62 ng/ml