

Data Path : Z:\pestpcbsrv\HPCHEM1\ECD\_L\Data\PL052623\  
 Data File : PL083071.D  
 Signal(s) : Signal #1: ECD1A.ch Signal #2: ECD2B.ch  
 Acq On : 26 May 2023 22:03  
 Operator : AR\AJ  
 Sample : 02955-16  
 Misc :  
 ALS Vial : 35 Sample Multiplier: 1

Instrument :  
 ECD\_L  
 ClientSampleId :  
 DUP07

Integration File signal 1: autoint1.e  
 Integration File signal 2: autoint2.e  
 Quant Time: May 27 06:15:01 2023  
 Quant Method : Z:\pestpcbsrv\HPCHEM1\ECD\_L\methods\PL051923.M  
 Quant Title : GC Extractables  
 QLast Update : Sat May 20 04:58:53 2023  
 Response via : Initial Calibration  
 Integrator: ChemStation

Volume Inj. : 1 µl  
 Signal #1 Phase : ZB-MR2 Signal #2 Phase: ZB-MR1  
 Signal #1 Info : 30M x 0.32mm x0.2 Signal #2 Info : 30M x 0.32mm x0.5µm

Compound	RT#1	RT#2	Resp#1	Resp#2	ng/ml	ng/ml
-----						
System Monitoring Compounds						
1) SA Tetrachlo...	3.316	2.636	38719204	35597871	13.174	13.712
28) SA Decachlor...	8.729	7.738	31160685	37700872	14.857	15.162

Target Compounds

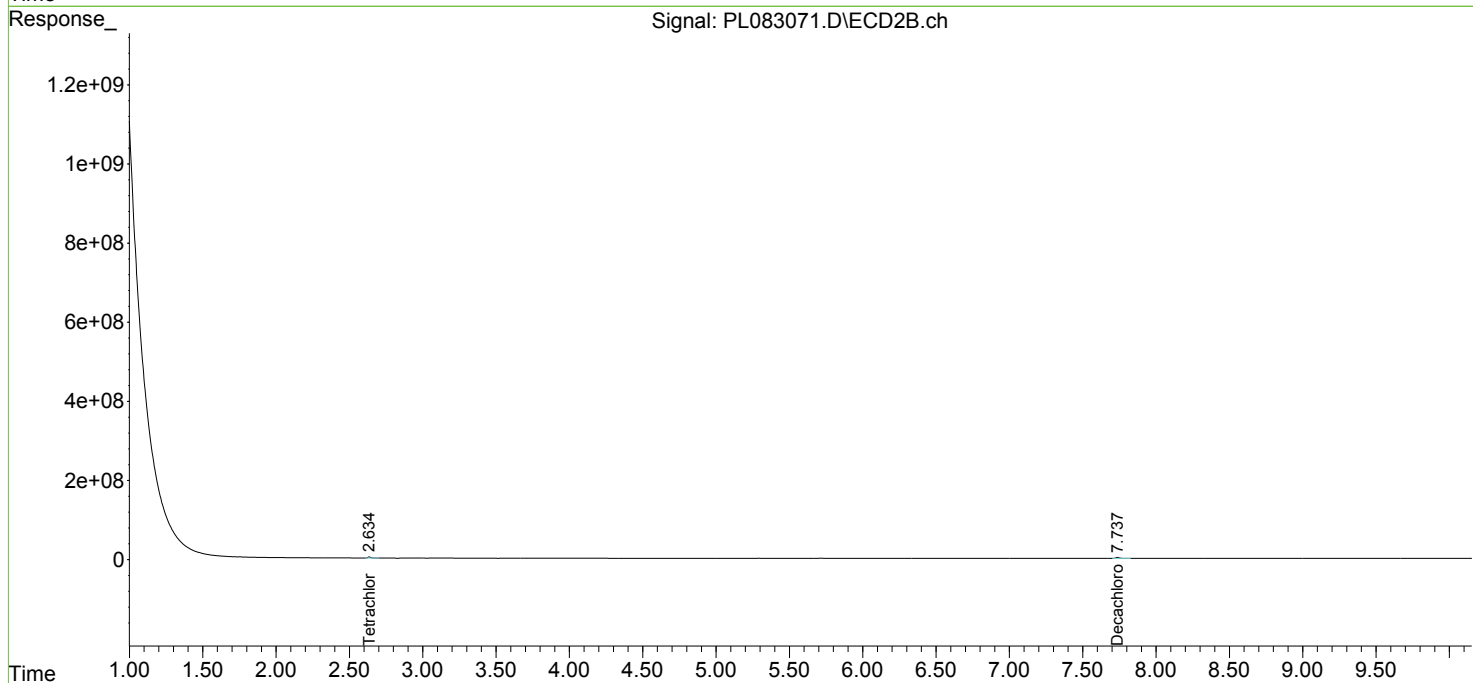
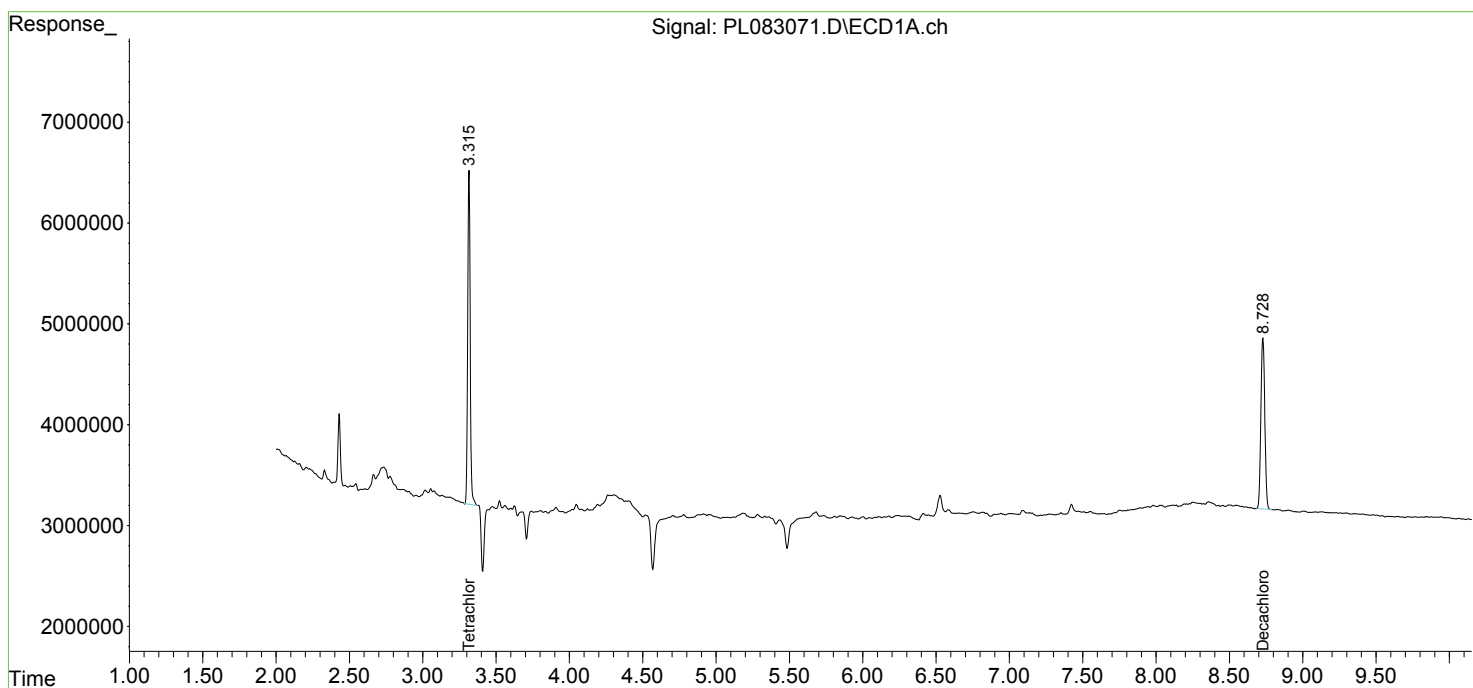
(f)=RT Delta > 1/2 Window (#)=Amounts differ by > 25% (m)=manual int.

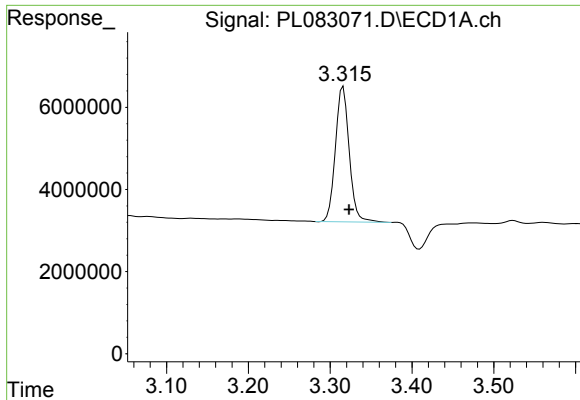
Data Path : Z:\pestpcbsrv\HPCHEM1\ECD\_L\Data\PL052623\  
 Data File : PL083071.D  
 Signal(s) : Signal #1: ECD1A.ch Signal #2: ECD2B.ch  
 Acq On : 26 May 2023 22:03  
 Operator : AR\AJ  
 Sample : 02955-16  
 Misc :  
 ALS Vial : 35 Sample Multiplier: 1

Instrument :  
 ECD\_L  
 ClientSampleId :  
 DUP07

Integration File signal 1: autoint1.e  
 Integration File signal 2: autoint2.e  
 Quant Time: May 27 06:15:01 2023  
 Quant Method : Z:\pestpcbsrv\HPCHEM1\ECD\_L\methods\PL051923.M  
 Quant Title : GC Extractables  
 QLast Update : Sat May 20 04:58:53 2023  
 Response via : Initial Calibration  
 Integrator: ChemStation

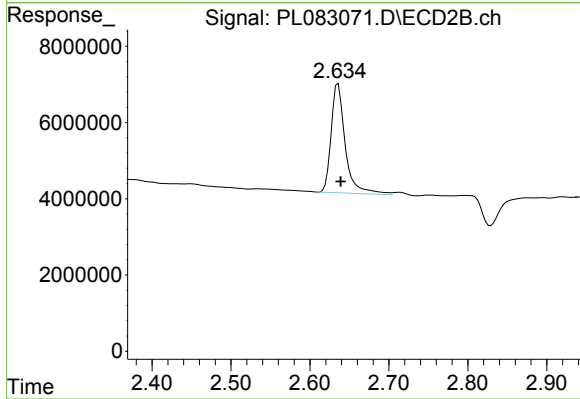
Volume Inj. : 1 µl  
 Signal #1 Phase : ZB-MR2 Signal #2 Phase: ZB-MR1  
 Signal #1 Info : 30M x 0.32mm x0.2 Signal #2 Info : 30M x 0.32mm x0.5µm



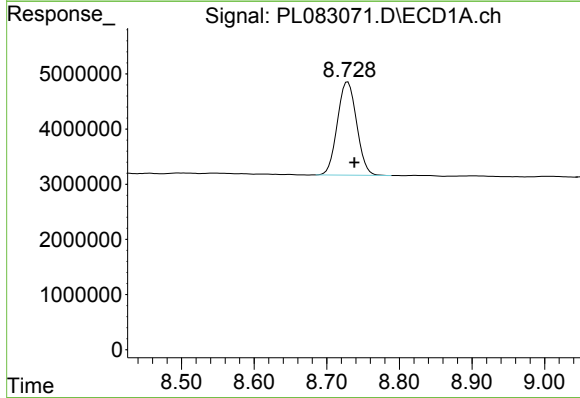


#1 Tetrachloro-m-xylene  
 R.T.: 3.316 min  
 Delta R.T.: -0.007 min  
 Response: 38719204  
 Conc: 13.17 ng/ml

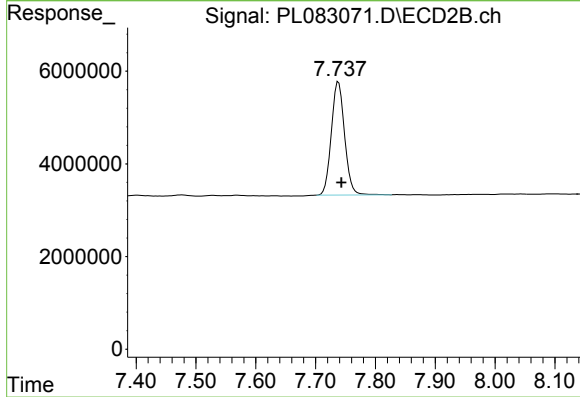
Instrument :  
 ECD\_L  
 ClientSampleId :  
 DUP07



#1 Tetrachloro-m-xylene  
 R.T.: 2.636 min  
 Delta R.T.: -0.003 min  
 Response: 35597871  
 Conc: 13.71 ng/ml



#28 Decachlorobiphenyl  
 R.T.: 8.729 min  
 Delta R.T.: -0.009 min  
 Response: 31160685  
 Conc: 14.86 ng/ml



#28 Decachlorobiphenyl  
 R.T.: 7.738 min  
 Delta R.T.: -0.005 min  
 Response: 37700872  
 Conc: 15.16 ng/ml