

Data Path : Z:\pestpcbsrv\HPCHEM1\ECD\_L\Data\PL052722\  
 Data File : PL075126.D  
 Signal(s) : Signal #1: ECD1A.ch Signal #2: ECD2B.ch  
 Acq On : 27 May 2022 17:27  
 Operator : AR\AJ  
 Sample : PB145085BL  
 Misc :  
 ALS Vial : 23 Sample Multiplier: 1

Instrument :  
 ECD\_L  
 ClientSampleId :

Integration File signal 1: autoint1.e  
 Integration File signal 2: autoint2.e  
 Quant Time: May 28 02:47:08 2022  
 Quant Method : Z:\pestpcbsrv\HPCHEM1\ECD\_L\methods\PL051122.M  
 Quant Title : GC Extractables  
 QLast Update : Sat May 14 02:37:15 2022  
 Response via : Initial Calibration  
 Integrator: ChemStation

Volume Inj. : 1 µl  
 Signal #1 Phase : ZB-MR2 Signal #2 Phase: ZB-MR1  
 Signal #1 Info : 30M x 0.32mm x0.2 Signal #2 Info : 30M x 0.32mm x0.5µm

	Compound	RT#1	RT#2	Resp#1	Resp#2	ng/ml	ng/ml
-----							
System Monitoring Compounds							
1)	SA Tetrachlo...	5.644	4.644	11491107	31915646	22.632	23.253
28)	SA Decachlor...	11.639	10.392	10539419	21790249	23.600	21.229
Target Compounds							
4)	MA Heptachlor	7.311f	0.000	272863	0	0.423	N.D. #
8)	B Heptachlo...	8.126	0.000	432624	0	0.761	N.D. #
10)	B gamma-Chl...	8.385	0.000	270817	0	0.524	N.D. #
13)	MA Dieldrin	0.000	7.761	0	471794	N.D.	0.370 #
14)	MA Endrin	0.000	8.073	0	1167957	N.D.	1.106 #
21)	B Endrin ke...	10.186	0.000	300185	0	0.585	N.D. #
25)	Chlordane-3	8.385	0.000	270817	0	3.956	N.D. #
26)	Chlordane-4	0.000	7.401f	0	222258	N.D.	1.621 #
-----							

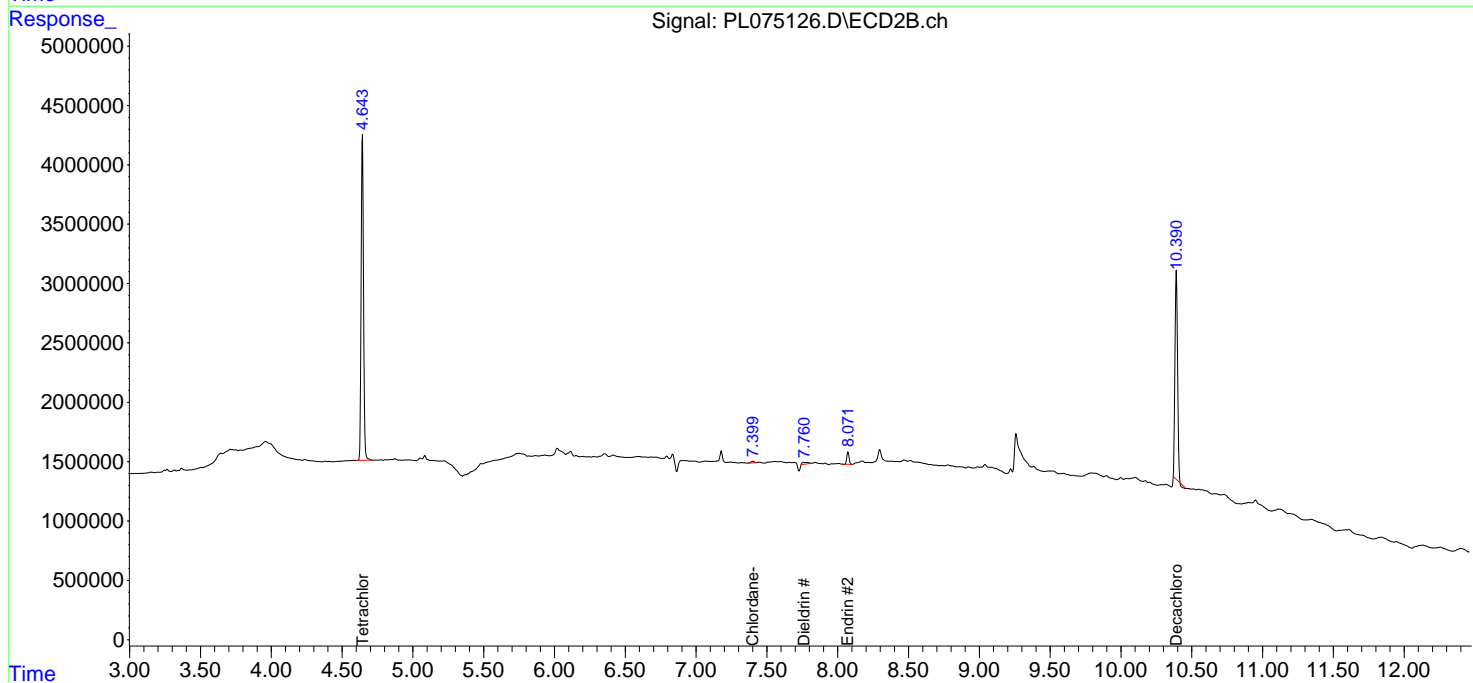
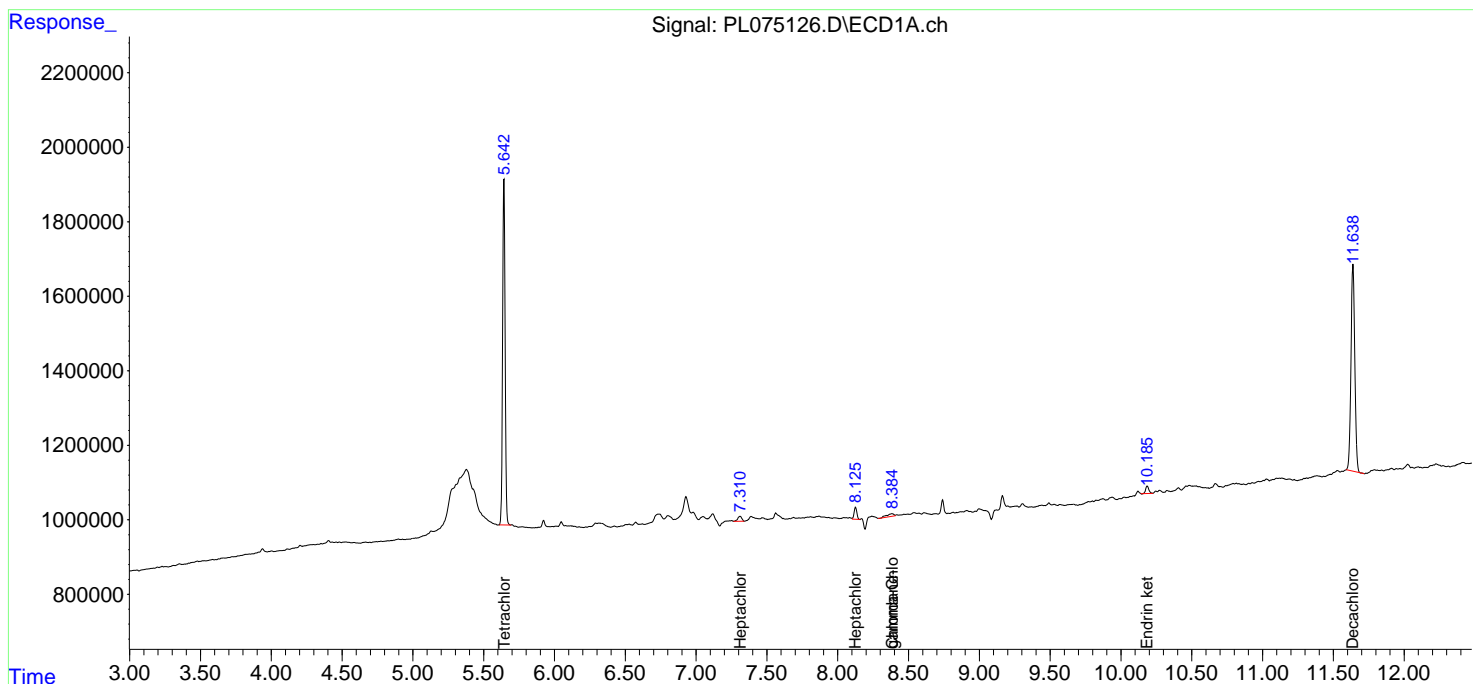
(f)=RT Delta > 1/2 Window (#)=Amounts differ by > 25% (m)=manual int.

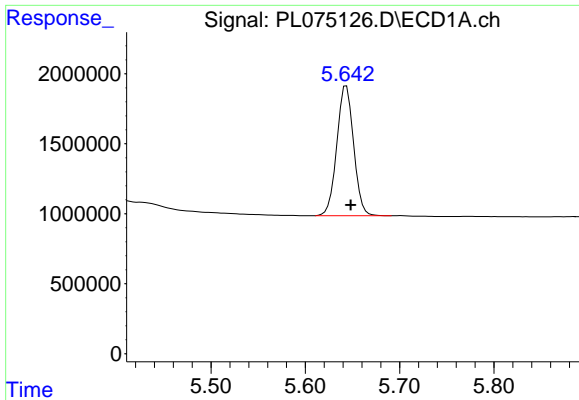
Data Path : Z:\pestpcbsrv\HPCHEM1\ECD\_L\Data\PL052722\  
 Data File : PL075126.D  
 Signal(s) : Signal #1: ECD1A.ch Signal #2: ECD2B.ch  
 Acq On : 27 May 2022 17:27  
 Operator : AR\AJ  
 Sample : PB145085BL  
 Misc :  
 ALS Vial : 23 Sample Multiplier: 1

Instrument :  
 ECD\_L  
 ClientSampleId :

Integration File signal 1: autoint1.e  
 Integration File signal 2: autoint2.e  
 Quant Time: May 28 02:47:08 2022  
 Quant Method : Z:\pestpcbsrv\HPCHEM1\ECD\_L\methods\PL051122.M  
 Quant Title : GC Extractables  
 QLast Update : Sat May 14 02:37:15 2022  
 Response via : Initial Calibration  
 Integrator: ChemStation

Volume Inj. : 1 µl  
 Signal #1 Phase : ZB-MR2 Signal #2 Phase: ZB-MR1  
 Signal #1 Info : 30M x 0.32mm x0.2 Signal #2 Info : 30M x 0.32mm x0.5µm

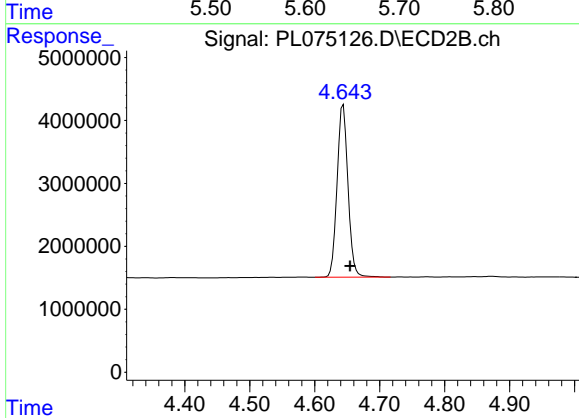




#1 Tetrachloro-m-xylene

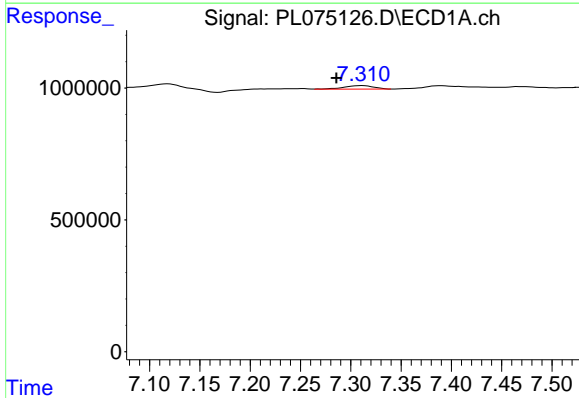
R.T.: 5.644 min  
 Delta R.T.: -0.004 min  
 Response: 11491107  
 Conc: 22.63 ng/ml

Instrument :  
 ECD\_L  
 ClientSampleId :



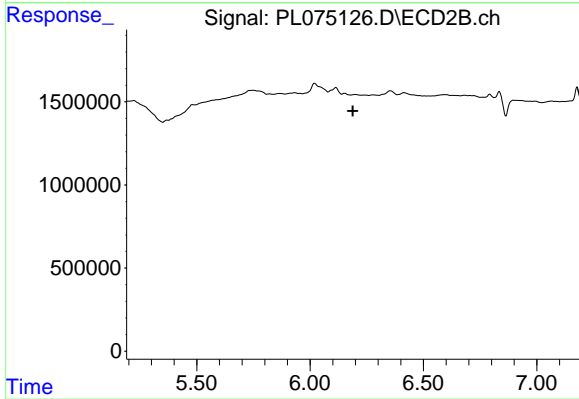
#1 Tetrachloro-m-xylene

R.T.: 4.644 min  
 Delta R.T.: -0.010 min  
 Response: 31915646  
 Conc: 23.25 ng/ml



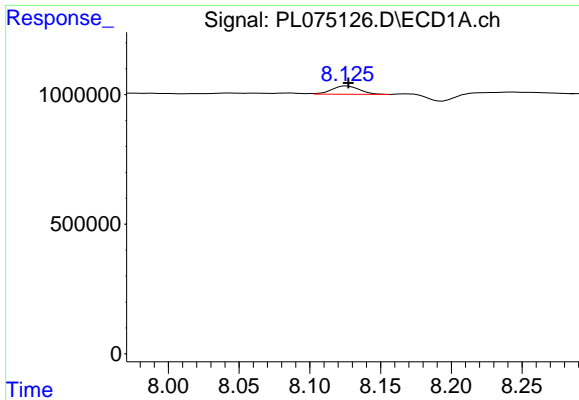
#4 Heptachlor

R.T.: 7.311 min  
 Delta R.T.: 0.026 min  
 Response: 272863  
 Conc: 0.42 ng/ml



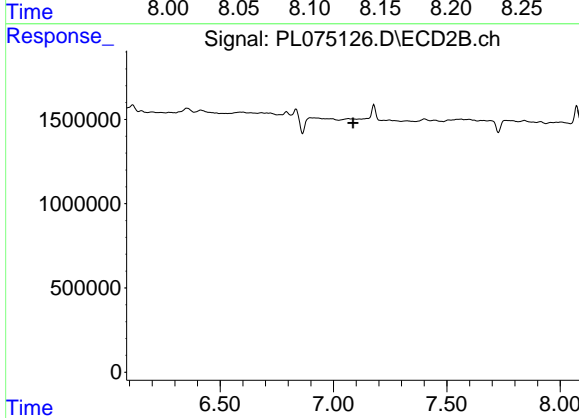
#4 Heptachlor

R.T.: 0.000 min  
 Exp R.T.: 6.189 min  
 Response: 0  
 Conc: N.D.

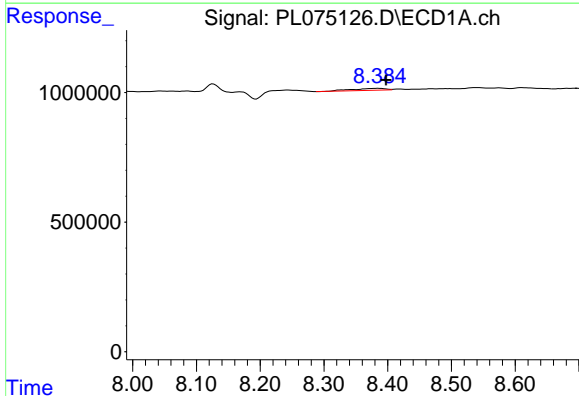


#8 Heptachlor epoxide  
 R.T.: 8.126 min  
 Delta R.T.: -0.001 min  
 Response: 432624  
 Conc: 0.76 ng/ml

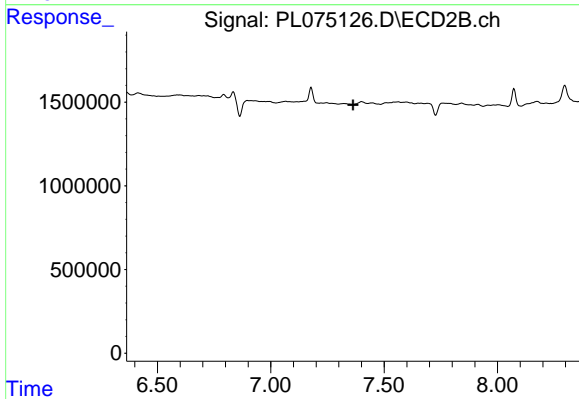
Instrument :  
 ECD\_L  
 ClientSampleId :



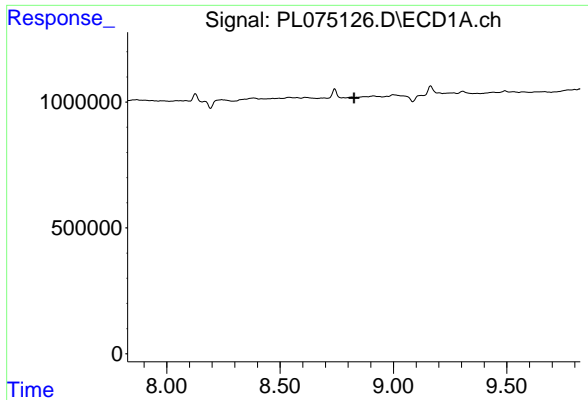
#8 Heptachlor epoxide  
 R.T.: 0.000 min  
 Exp R.T. : 7.087 min  
 Response: 0  
 Conc: N.D.



#10 gamma-Chlordane  
 R.T.: 8.385 min  
 Delta R.T.: -0.013 min  
 Response: 270817  
 Conc: 0.52 ng/ml

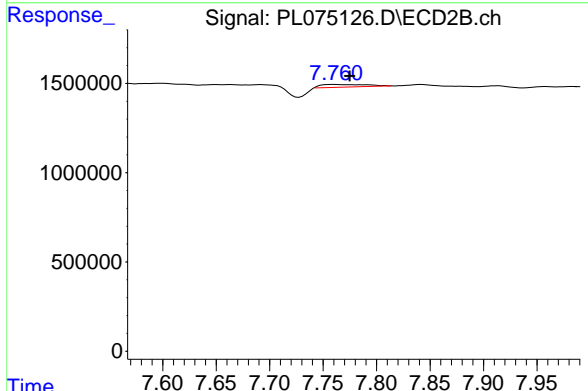


#10 gamma-Chlordane  
 R.T.: 0.000 min  
 Exp R.T. : 7.363 min  
 Response: 0  
 Conc: N.D.

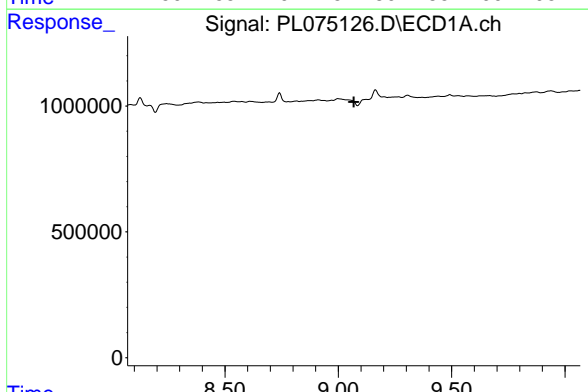


#13 Dieldrin  
 R.T.: 0.000 min  
 Exp R.T. : 8.827 min  
 Response: 0  
 Conc: N.D.

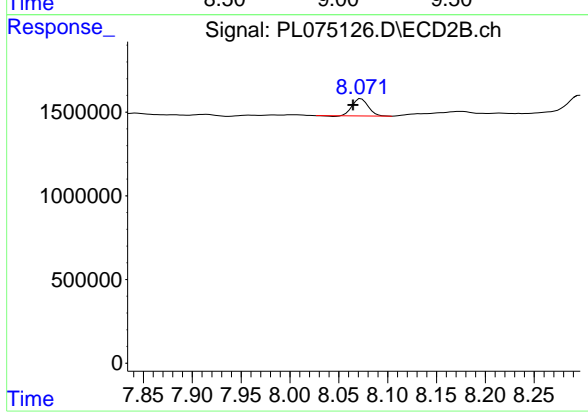
Instrument :  
 ECD\_L  
 ClientSampleId :



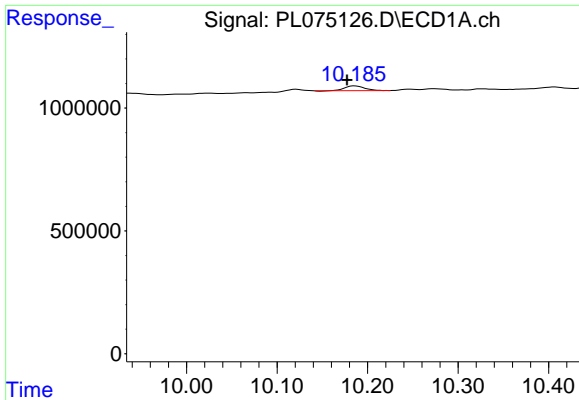
#13 Dieldrin  
 R.T.: 7.761 min  
 Delta R.T.: -0.014 min  
 Response: 471794  
 Conc: 0.37 ng/ml



#14 Endrin  
 R.T.: 0.000 min  
 Exp R.T. : 9.068 min  
 Response: 0  
 Conc: N.D.



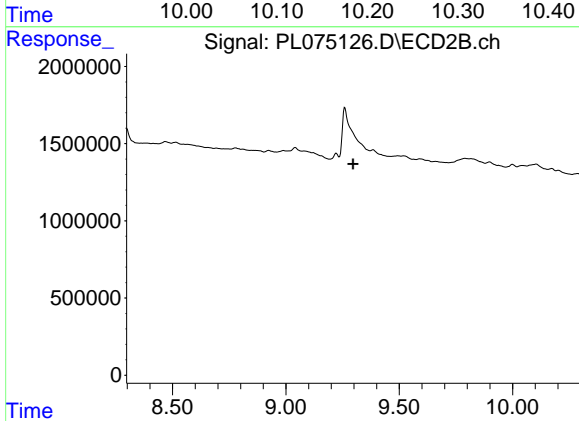
#14 Endrin  
 R.T.: 8.073 min  
 Delta R.T.: 0.008 min  
 Response: 1167957  
 Conc: 1.11 ng/ml



#21 Endrin ketone

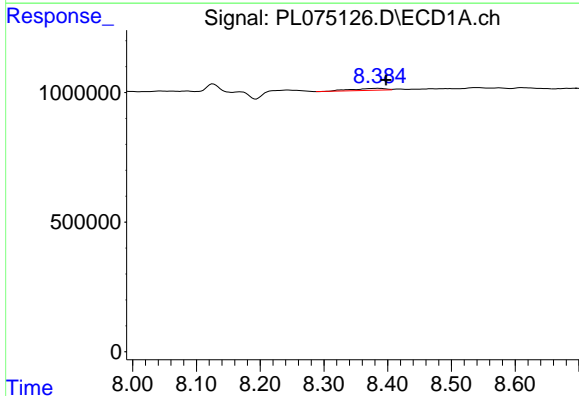
R.T.: 10.186 min  
 Delta R.T.: 0.009 min  
 Response: 300185  
 Conc: 0.59 ng/ml

Instrument :  
 ECD\_L  
 ClientSampleId :



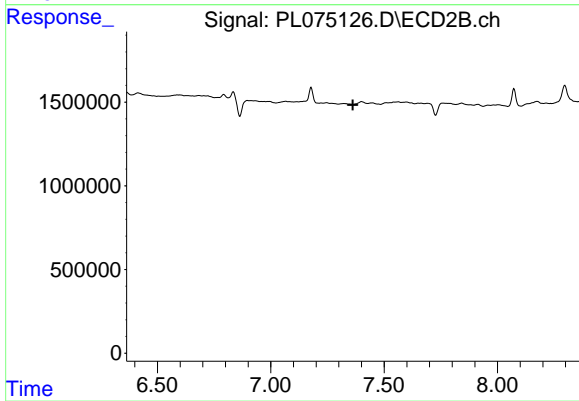
#21 Endrin ketone

R.T.: 0.000 min  
 Exp R.T. : 9.296 min  
 Response: 0  
 Conc: N.D.



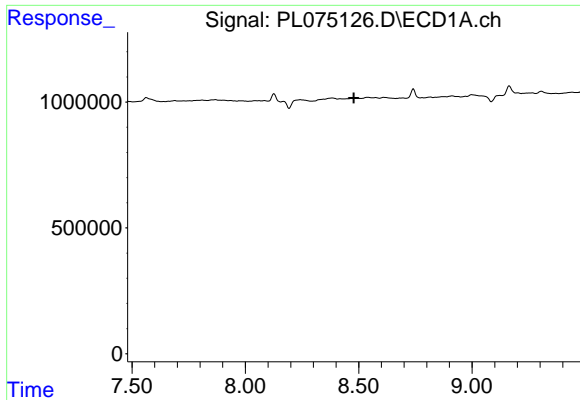
#25 Chlordane-3

R.T.: 8.385 min  
 Delta R.T.: -0.013 min  
 Response: 270817  
 Conc: 3.96 ng/ml



#25 Chlordane-3

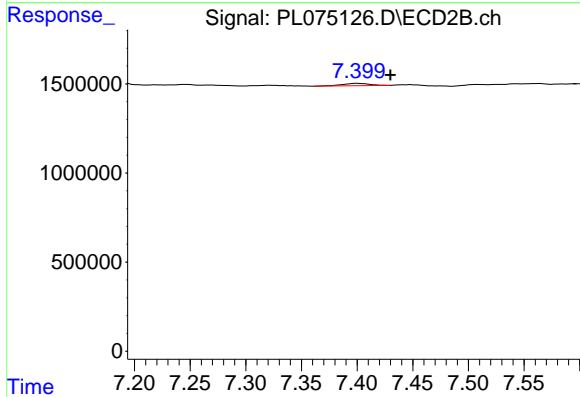
R.T.: 0.000 min  
 Exp R.T. : 7.362 min  
 Response: 0  
 Conc: N.D.



#26 Chlordane-4

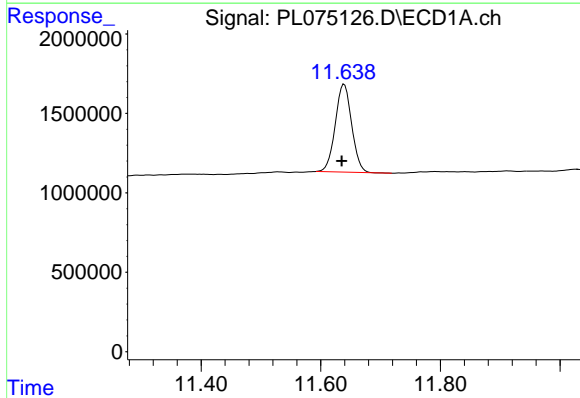
R.T.: 0.000 min  
 Exp R.T.: 8.479 min  
 Response: 0  
 Conc: N.D.

Instrument :  
 ECD\_L  
 ClientSampleId :



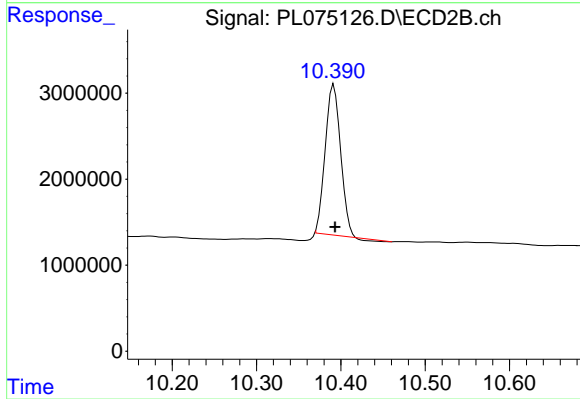
#26 Chlordane-4

R.T.: 7.401 min  
 Delta R.T.: -0.029 min  
 Response: 222258  
 Conc: 1.62 ng/ml



#28 Decachlorobiphenyl

R.T.: 11.639 min  
 Delta R.T.: 0.004 min  
 Response: 10539419  
 Conc: 23.60 ng/ml



#28 Decachlorobiphenyl

R.T.: 10.392 min  
 Delta R.T.: -0.001 min  
 Response: 21790249  
 Conc: 21.23 ng/ml