

Data Path : Z:\pestpcbsrv\HPCHEM1\ECD\_L\Data\PL052722\  
 Data File : PL075130.D  
 Signal(s) : Signal #1: ECD1A.ch Signal #2: ECD2B.ch  
 Acq On : 27 May 2022 18:51  
 Operator : AR\AJ  
 Sample : V N2896-05MS 10X  
 Misc :  
 ALS Vial : 25 Sample Multiplier: 1

Instrument :  
 ECD\_L  
 ClientSampleId :

Integration File signal 1: autoint1.e  
 Integration File signal 2: autoint2.e  
 Quant Time: May 28 02:48:03 2022  
 Quant Method : Z:\pestpcbsrv\HPCHEM1\ECD\_L\methods\PL051122.M  
 Quant Title : GC Extractables  
 QLast Update : Sat May 14 02:37:15 2022  
 Response via : Initial Calibration  
 Integrator: ChemStation

Volume Inj. : 1 µl  
 Signal #1 Phase : ZB-MR2 Signal #2 Phase: ZB-MR1  
 Signal #1 Info : 30M x 0.32mm x0.2 Signal #2 Info : 30M x 0.32mm x0.5µm

	Compound	RT#1	RT#2	Resp#1	Resp#2	ng/ml	ng/ml
-----							
System Monitoring Compounds							
1)	SA Tetrachlo...	5.643	4.644	1314892	3732900	2.590	2.720
28)	SA Decachlor...	11.640	10.392	1376741	2584551	3.083	2.518
Target Compounds							
2)	A alpha-BHC	6.227	5.346	3993614	10002066	5.837	5.943
3)	MA gamma-BHC...	6.625	5.766	3965056	10400540	6.143	6.294
4)	MA Heptachlor	7.280	6.176	4939625	11271035	7.654	7.426
5)	MB Aldrin	7.654	6.499	3925621	11077680	6.337	7.383
6)	B beta-BHC	6.877	6.144	1892635	5422438	6.341	6.830
7)	B delta-BHC	7.147	6.405	3663684	11069367	5.843	7.079
8)	Heptachlo...	8.122	7.073	3776537	10293453	6.640	7.396
9)	A Endosulfan I	8.531	7.475	3307383	9566030	5.737	7.646 #
10)	B gamma-Chl...	8.393	7.350	3980979	10706987	7.696	7.726
11)	B alpha-Chl...	8.474	7.419	3587540	10695378	5.876	7.912 #
12)	B 4,4'-DDE	8.660	7.631	2925435	8670265	6.319	7.368
13)	MA Dieldrin	8.821	7.761	3414655	8207357	6.497	6.443
14)	MA Endrin	9.062	8.051	2795281	8746809	6.774	8.281
15)	B Endosulfa...	9.296	8.361	3311859	8504641	7.534	7.529
16)	A 4,4'-DDD	9.201	8.215	2859521	7166135	6.325	7.274
17)	MA 4,4'-DDT	9.521	8.475f	2730053	6669626	5.940	6.666
18)	B Endrin al...	9.431	8.549	2651022	6003248	7.490	7.516
19)	B Endosulfa...	9.668	8.779	3481791	6980276	7.704	6.412
20)	A Methoxychlor	10.007	9.069	1572327	3141149	6.420	5.375
21)	B Endrin ke...	10.171	9.297	3315925	7798990	6.466	6.995
22)	Mirex	10.644	9.485f	2627775	6739289	6.512	6.958
24)	Chlordane-2	7.654f	0.000	3925621	0	177.117	N.D. #
25)	Chlordane-3	8.393	7.350	3980979	10706987	58.151	82.495 #
26)	Chlordane-4	8.474	7.419	3587540	10695378	37.238	78.019 #
27)	Chlordane-5	0.000	8.131	0	638255	N.D.	17.262 #

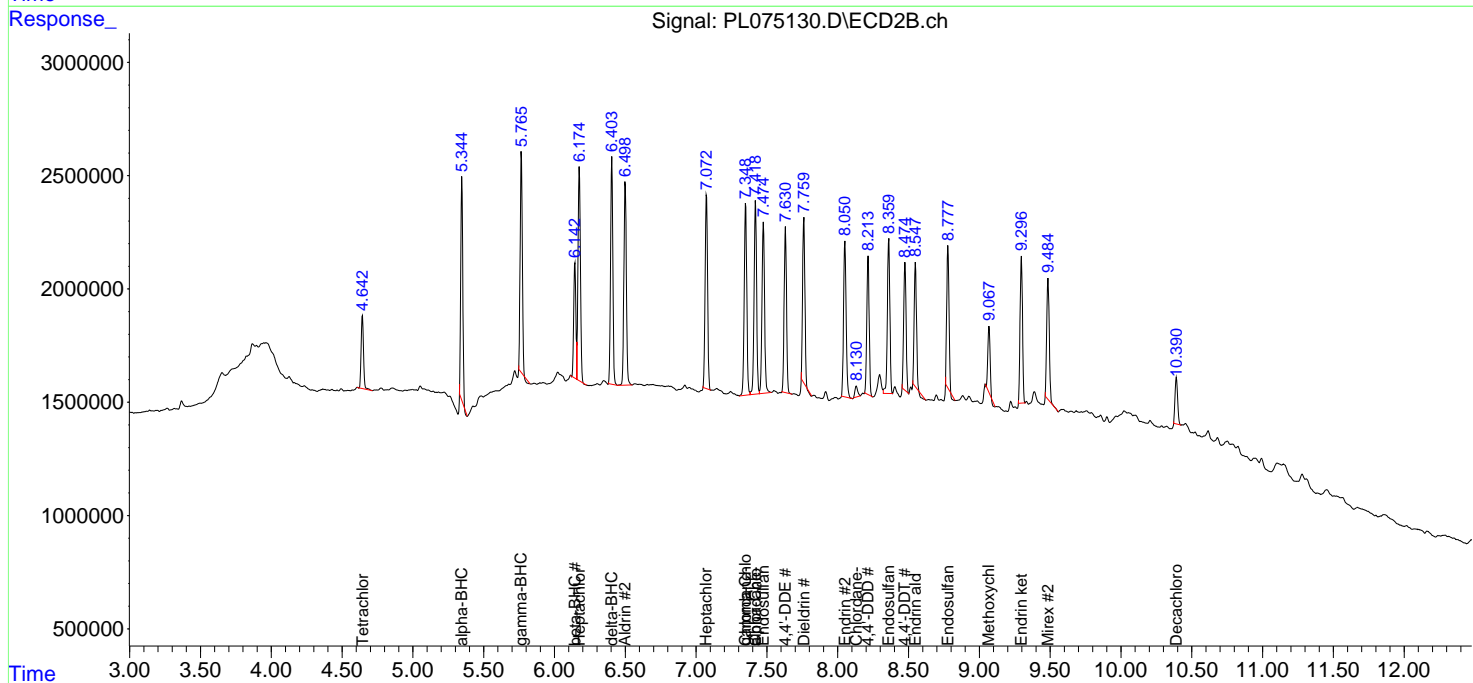
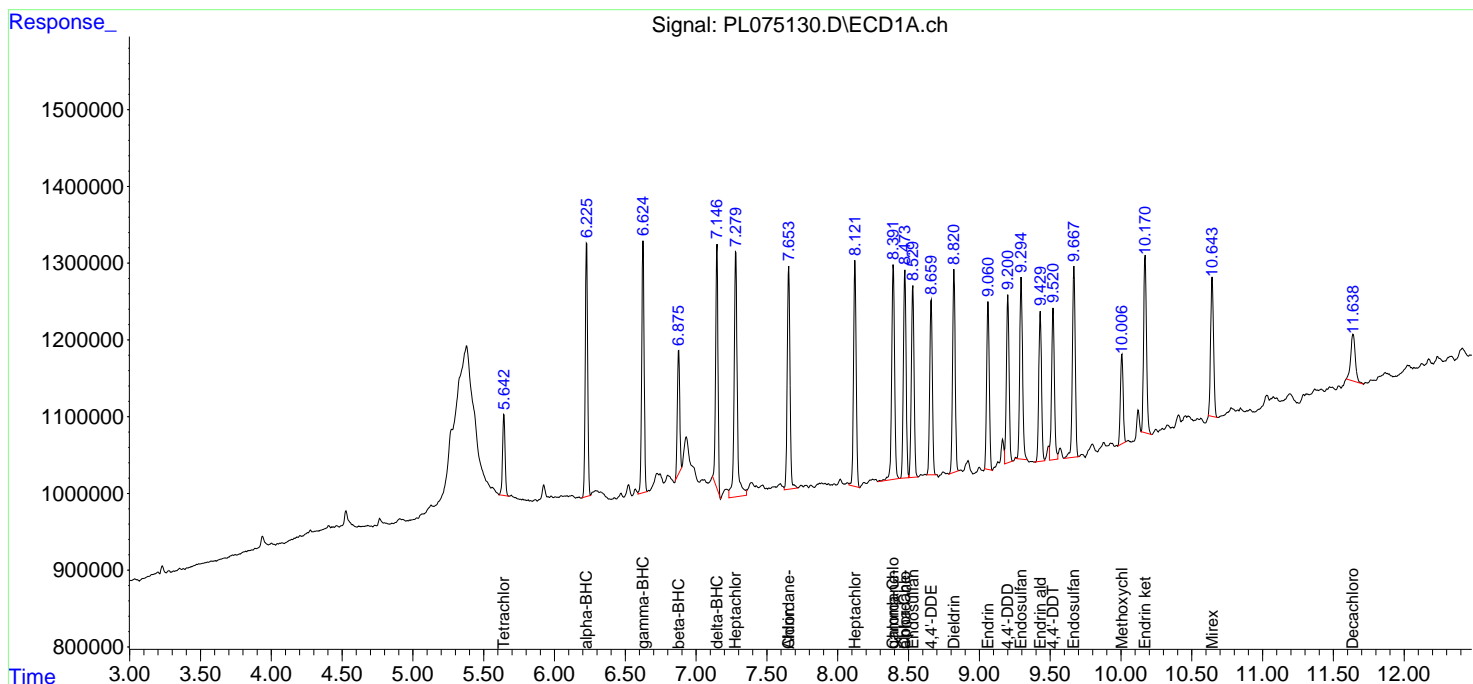
(f)=RT Delta > 1/2 Window (#)=Amounts differ by > 25% (m)=manual int.

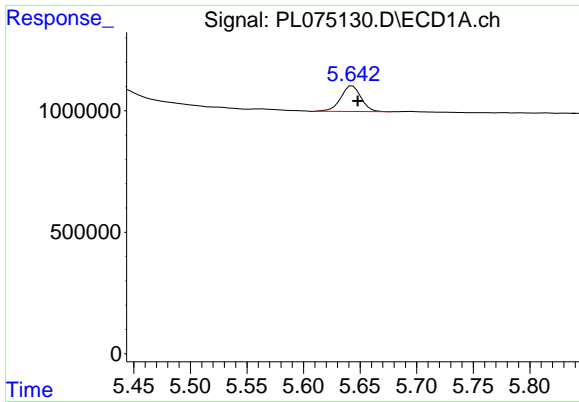
Data Path : Z:\pestpcbsrv\HPCHEM1\ECD\_L\Data\PL052722\  
 Data File : PL075130.D  
 Signal(s) : Signal #1: ECD1A.ch Signal #2: ECD2B.ch  
 Acq On : 27 May 2022 18:51  
 Operator : AR\AJ  
 Sample : V N2896-05MS 10X  
 Misc :  
 ALS Vial : 25 Sample Multiplier: 1

Instrument :  
 ECD\_L  
 ClientSampleId :

Integration File signal 1: autoint1.e  
 Integration File signal 2: autoint2.e  
 Quant Time: May 28 02:48:03 2022  
 Quant Method : Z:\pestpcbsrv\HPCHEM1\ECD\_L\methods\PL051122.M  
 Quant Title : GC Extractables  
 QLast Update : Sat May 14 02:37:15 2022  
 Response via : Initial Calibration  
 Integrator: ChemStation

Volume Inj. : 1 µl  
 Signal #1 Phase : ZB-MR2 Signal #2 Phase: ZB-MR1  
 Signal #1 Info : 30M x 0.32mm x0.2 Signal #2 Info : 30M x 0.32mm x0.5µm

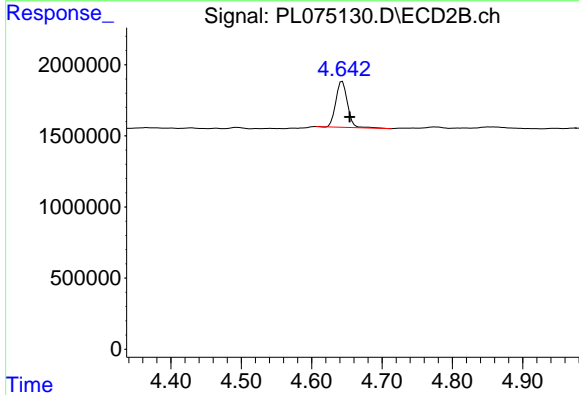




#1 Tetrachloro-m-xylene

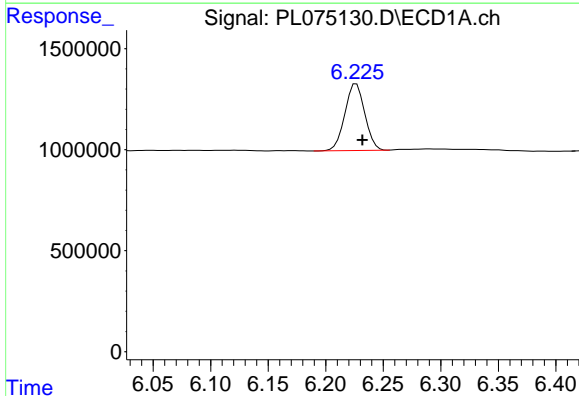
R.T.: 5.643 min  
 Delta R.T.: -0.005 min  
 Response: 1314892  
 Conc: 2.59 ng/ml

Instrument :  
 ECD\_L  
 ClientSampleId :



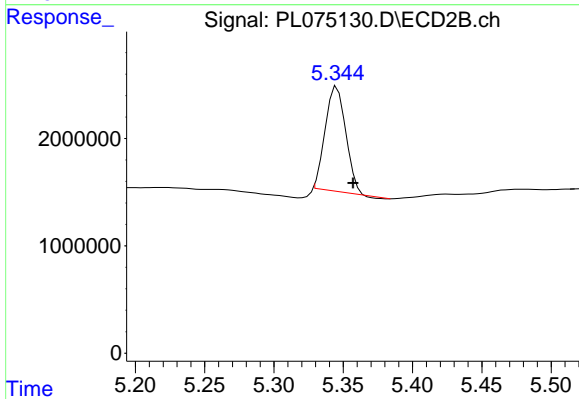
#1 Tetrachloro-m-xylene

R.T.: 4.644 min  
 Delta R.T.: -0.011 min  
 Response: 3732900  
 Conc: 2.72 ng/ml



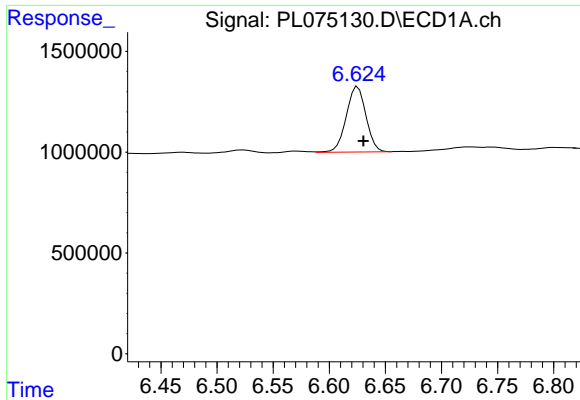
#2 alpha-BHC

R.T.: 6.227 min  
 Delta R.T.: -0.005 min  
 Response: 3993614  
 Conc: 5.84 ng/ml



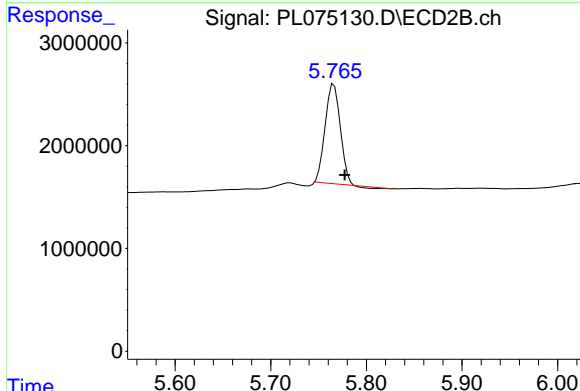
#2 alpha-BHC

R.T.: 5.346 min  
 Delta R.T.: -0.012 min  
 Response: 10002066  
 Conc: 5.94 ng/ml

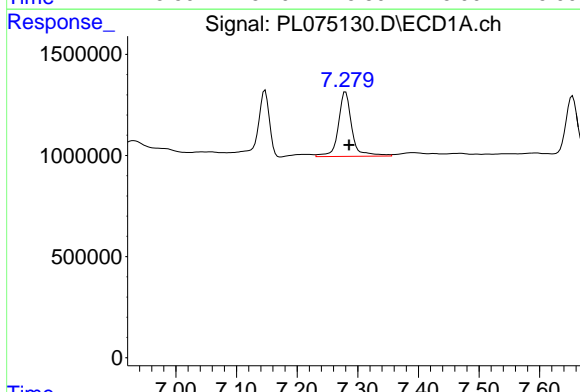


#3 gamma-BHC (Lindane)  
 R.T.: 6.625 min  
 Delta R.T.: -0.005 min  
 Response: 3965056  
 Conc: 6.14 ng/ml

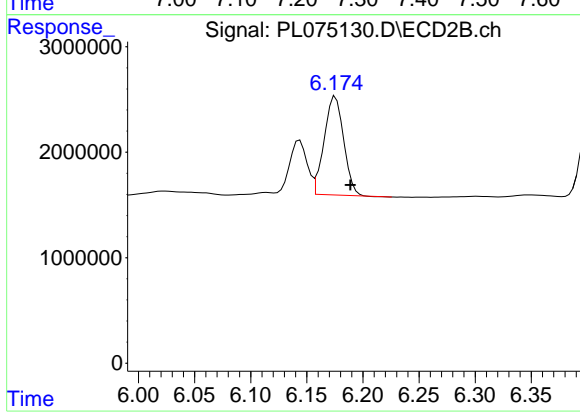
Instrument :  
 ECD\_L  
 ClientSampleId :



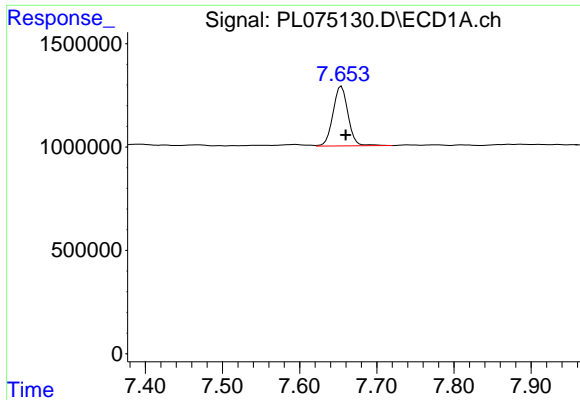
#3 gamma-BHC (Lindane)  
 R.T.: 5.766 min  
 Delta R.T.: -0.011 min  
 Response: 10400540  
 Conc: 6.29 ng/ml



#4 Heptachlor  
 R.T.: 7.280 min  
 Delta R.T.: -0.006 min  
 Response: 4939625  
 Conc: 7.65 ng/ml

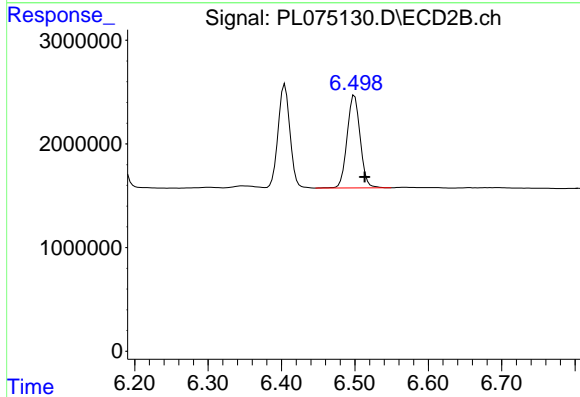


#4 Heptachlor  
 R.T.: 6.176 min  
 Delta R.T.: -0.013 min  
 Response: 11271035  
 Conc: 7.43 ng/ml

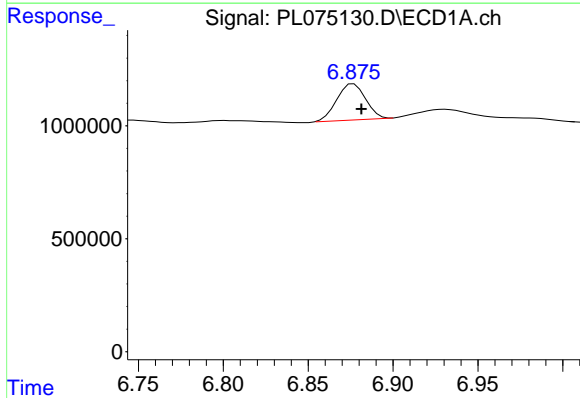


#5 Aldrin  
 R.T.: 7.654 min  
 Delta R.T.: -0.006 min  
 Response: 3925621  
 Conc: 6.34 ng/ml

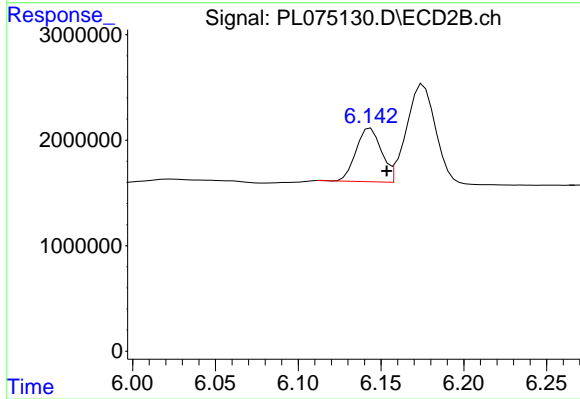
Instrument :  
 ECD\_L  
 ClientSampleId :



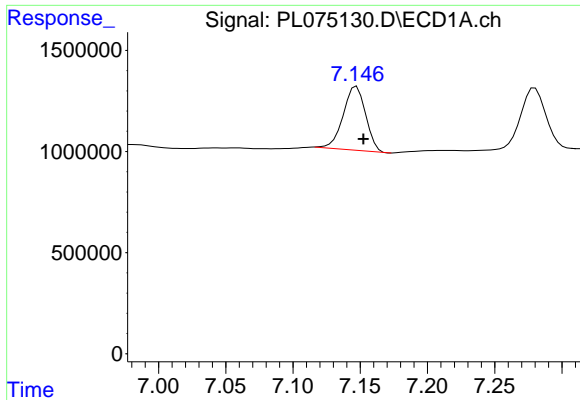
#5 Aldrin  
 R.T.: 6.499 min  
 Delta R.T.: -0.014 min  
 Response: 11077680  
 Conc: 7.38 ng/ml



#6 beta-BHC  
 R.T.: 6.877 min  
 Delta R.T.: -0.005 min  
 Response: 1892635  
 Conc: 6.34 ng/ml



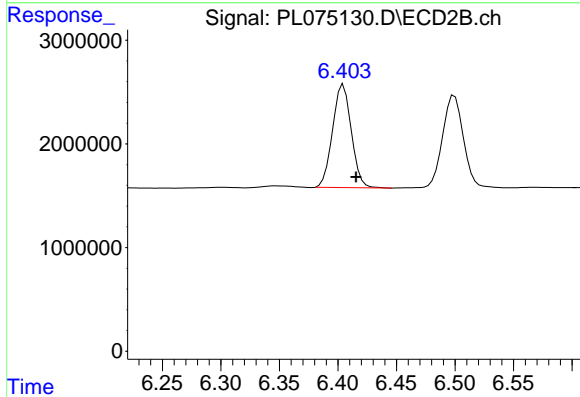
#6 beta-BHC  
 R.T.: 6.144 min  
 Delta R.T.: -0.010 min  
 Response: 5422438  
 Conc: 6.83 ng/ml



#7 delta-BHC

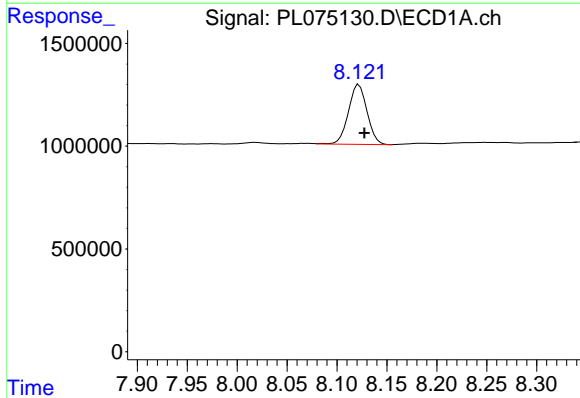
R.T.: 7.147 min  
 Delta R.T.: -0.005 min  
 Response: 3663684  
 Conc: 5.84 ng/ml

Instrument :  
 ECD\_L  
 ClientSampleId :



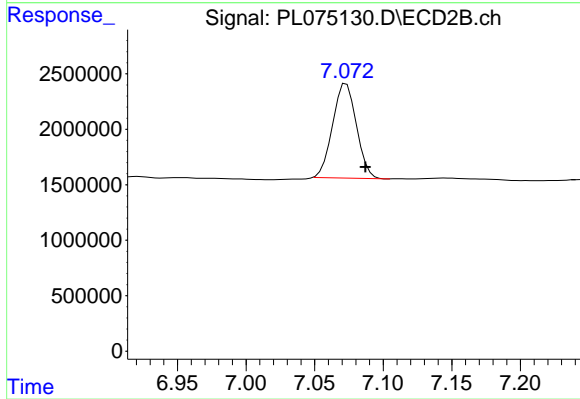
#7 delta-BHC

R.T.: 6.405 min  
 Delta R.T.: -0.011 min  
 Response: 11069367  
 Conc: 7.08 ng/ml



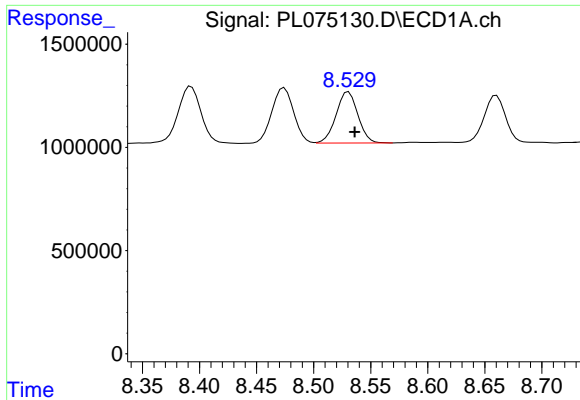
#8 Heptachlor epoxide

R.T.: 8.122 min  
 Delta R.T.: -0.005 min  
 Response: 3776537  
 Conc: 6.64 ng/ml



#8 Heptachlor epoxide

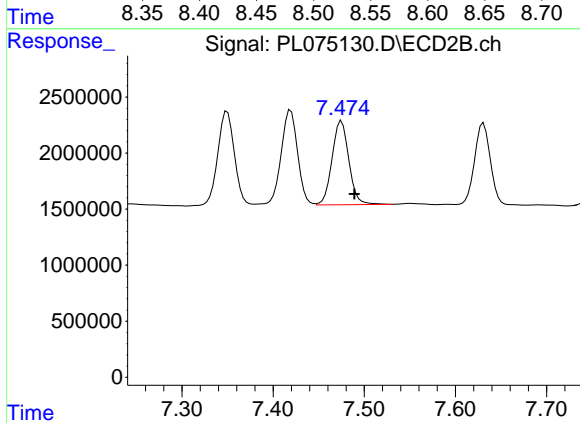
R.T.: 7.073 min  
 Delta R.T.: -0.014 min  
 Response: 10293453  
 Conc: 7.40 ng/ml



#9 Endosulfan I

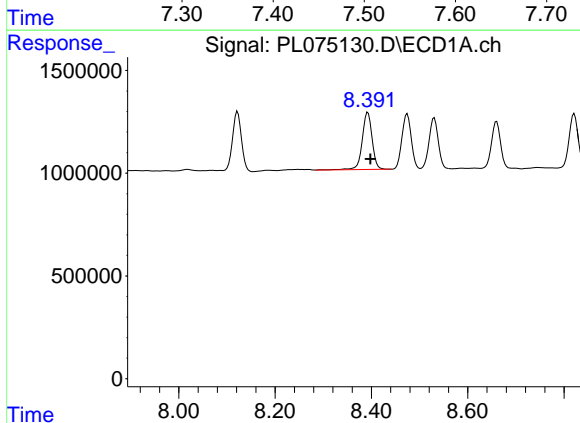
R.T.: 8.531 min  
 Delta R.T.: -0.005 min  
 Response: 3307383  
 Conc: 5.74 ng/ml

Instrument :  
 ECD\_L  
 ClientSampleId :



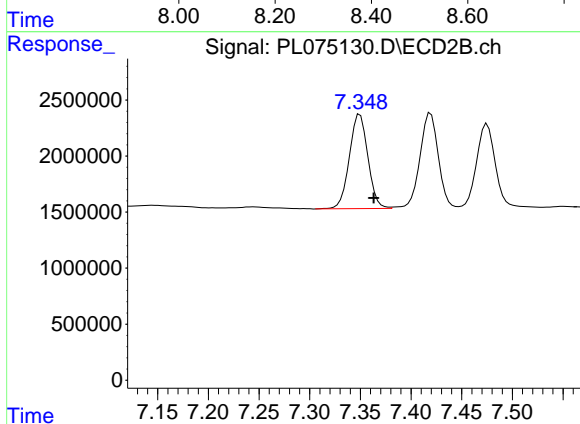
#9 Endosulfan I

R.T.: 7.475 min  
 Delta R.T.: -0.014 min  
 Response: 9566030  
 Conc: 7.65 ng/ml



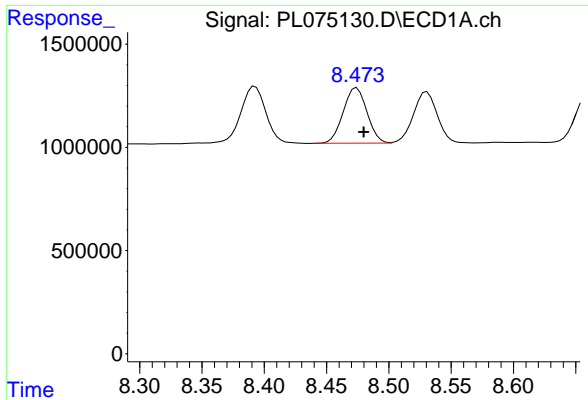
#10 gamma-Chlordane

R.T.: 8.393 min  
 Delta R.T.: -0.005 min  
 Response: 3980979  
 Conc: 7.70 ng/ml



#10 gamma-Chlordane

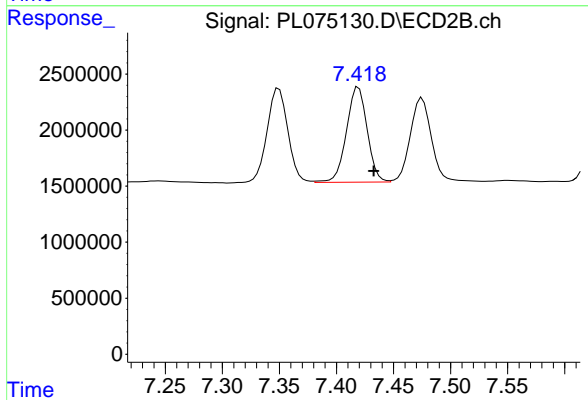
R.T.: 7.350 min  
 Delta R.T.: -0.014 min  
 Response: 10706987  
 Conc: 7.73 ng/ml



#11 alpha-Chlordane

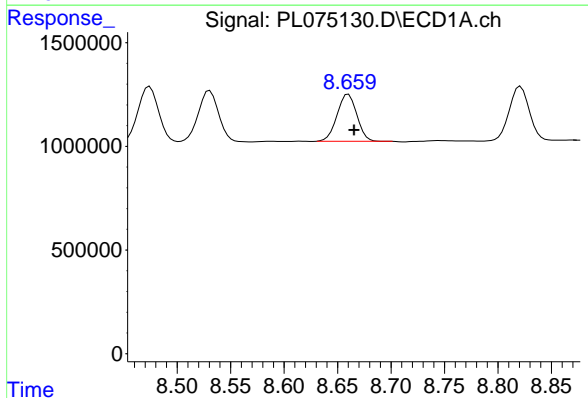
R.T.: 8.474 min  
 Delta R.T.: -0.006 min  
 Response: 3587540  
 Conc: 5.88 ng/ml

Instrument :  
 ECD\_L  
 ClientSampleId :



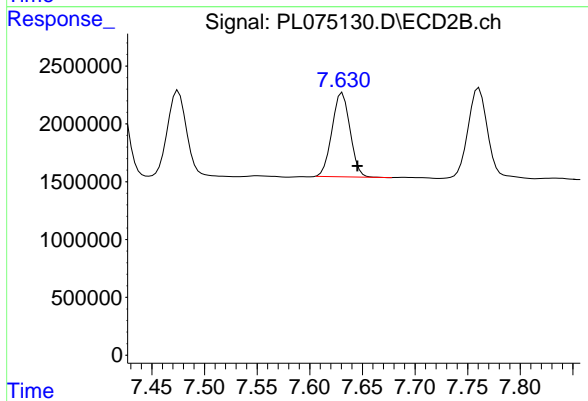
#11 alpha-Chlordane

R.T.: 7.419 min  
 Delta R.T.: -0.013 min  
 Response: 10695378  
 Conc: 7.91 ng/ml



#12 4,4'-DDE

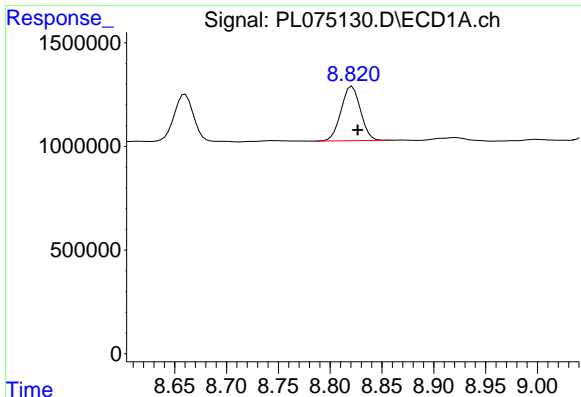
R.T.: 8.660 min  
 Delta R.T.: -0.005 min  
 Response: 2925435  
 Conc: 6.32 ng/ml



#12 4,4'-DDE

R.T.: 7.631 min  
 Delta R.T.: -0.014 min  
 Response: 8670265  
 Conc: 7.37 ng/ml

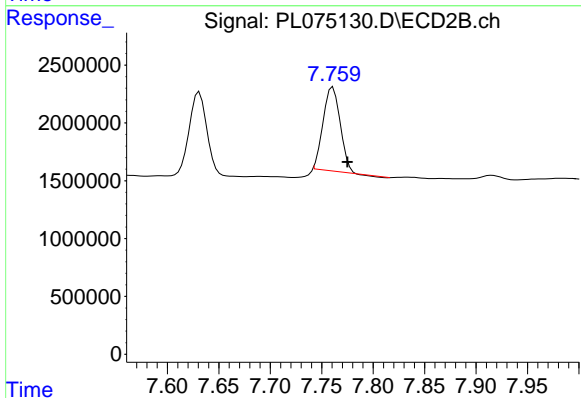




#13 Dieldrin

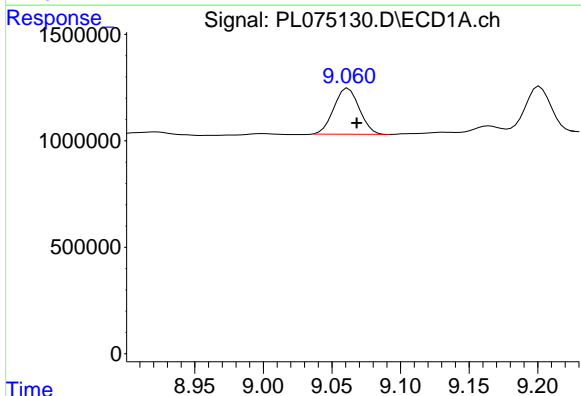
R.T.: 8.821 min  
 Delta R.T.: -0.005 min  
 Response: 3414655  
 Conc: 6.50 ng/ml

Instrument :  
 ECD\_L  
 ClientSampleId :



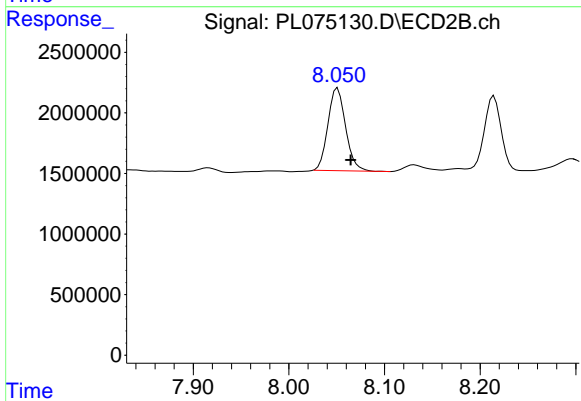
#13 Dieldrin

R.T.: 7.761 min  
 Delta R.T.: -0.014 min  
 Response: 8207357  
 Conc: 6.44 ng/ml



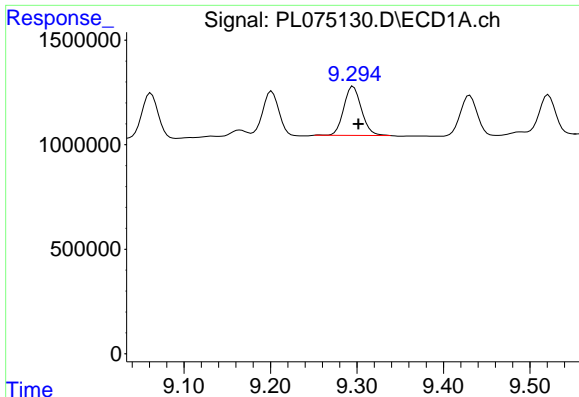
#14 Endrin

R.T.: 9.062 min  
 Delta R.T.: -0.006 min  
 Response: 2795281  
 Conc: 6.77 ng/ml



#14 Endrin

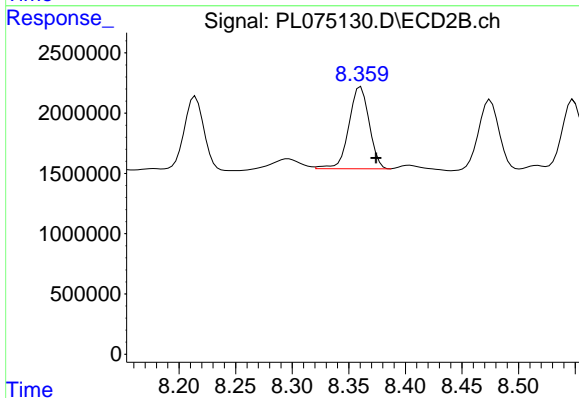
R.T.: 8.051 min  
 Delta R.T.: -0.014 min  
 Response: 8746809  
 Conc: 8.28 ng/ml



#15 Endosulfan II

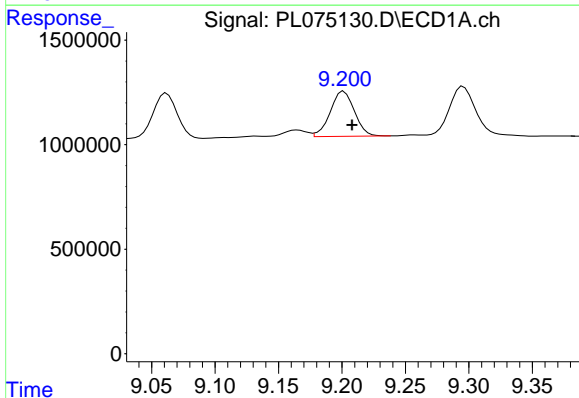
R.T.: 9.296 min  
 Delta R.T.: -0.006 min  
 Response: 3311859  
 Conc: 7.53 ng/ml

Instrument :  
 ECD\_L  
 ClientSampleId :



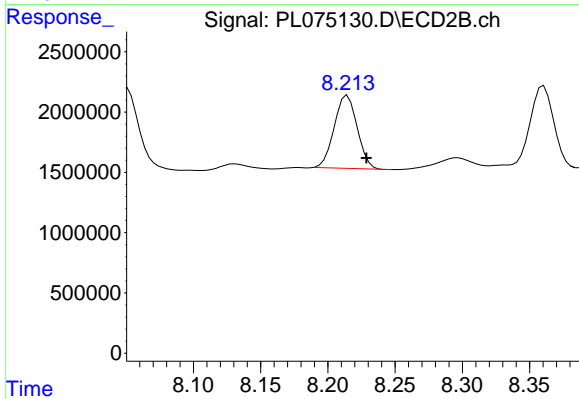
#15 Endosulfan II

R.T.: 8.361 min  
 Delta R.T.: -0.014 min  
 Response: 8504641  
 Conc: 7.53 ng/ml



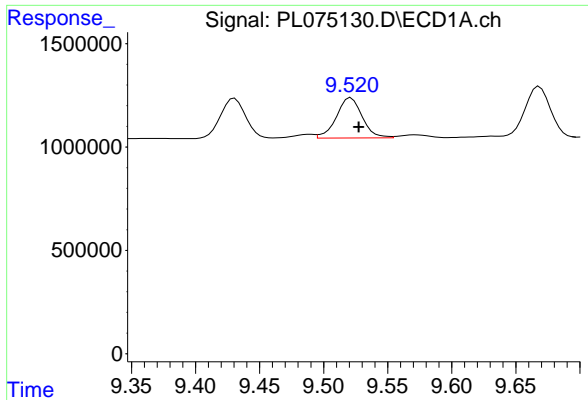
#16 4,4'-DDD

R.T.: 9.201 min  
 Delta R.T.: -0.006 min  
 Response: 2859521  
 Conc: 6.32 ng/ml



#16 4,4'-DDD

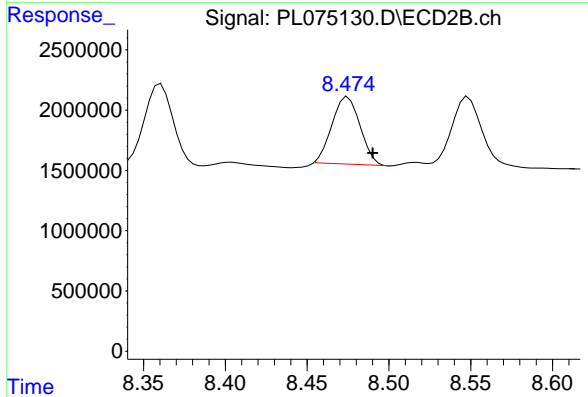
R.T.: 8.215 min  
 Delta R.T.: -0.014 min  
 Response: 7166135  
 Conc: 7.27 ng/ml



#17 4,4'-DDT

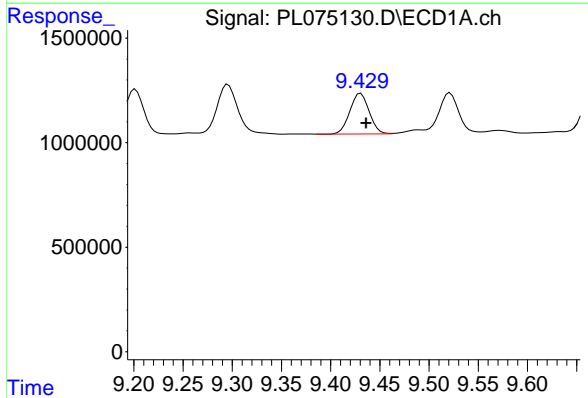
R.T.: 9.521 min  
 Delta R.T.: -0.006 min  
 Response: 2730053  
 Conc: 5.94 ng/ml

Instrument :  
 ECD\_L  
 ClientSampleId :



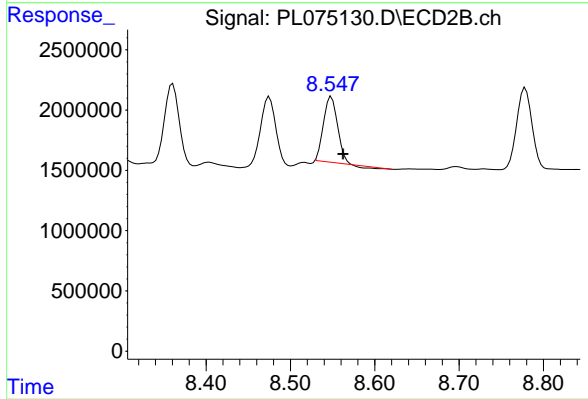
#17 4,4'-DDT

R.T.: 8.475 min  
 Delta R.T.: -0.015 min  
 Response: 6669626  
 Conc: 6.67 ng/ml



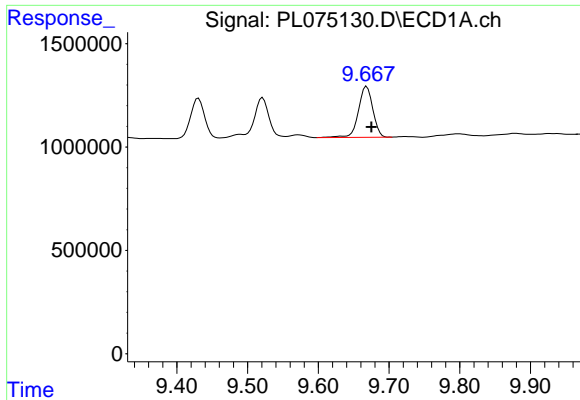
#18 Endrin aldehyde

R.T.: 9.431 min  
 Delta R.T.: -0.005 min  
 Response: 2651022  
 Conc: 7.49 ng/ml



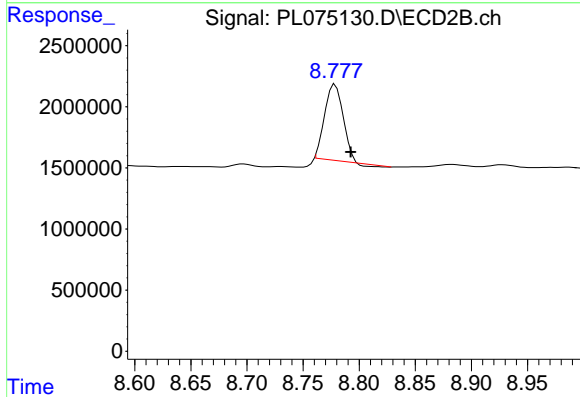
#18 Endrin aldehyde

R.T.: 8.549 min  
 Delta R.T.: -0.014 min  
 Response: 6003248  
 Conc: 7.52 ng/ml

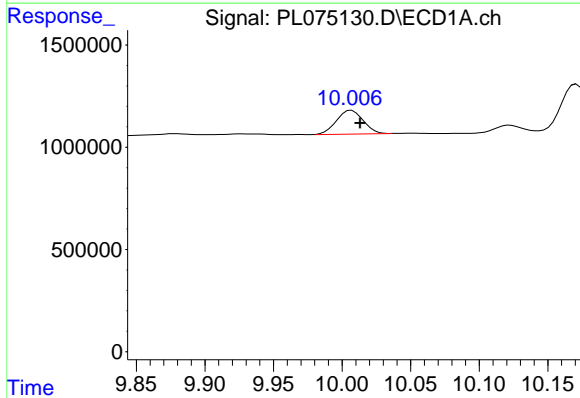


#19 Endosulfan Sulfate  
 R.T.: 9.668 min  
 Delta R.T.: -0.007 min  
 Response: 3481791  
 Conc: 7.70 ng/ml

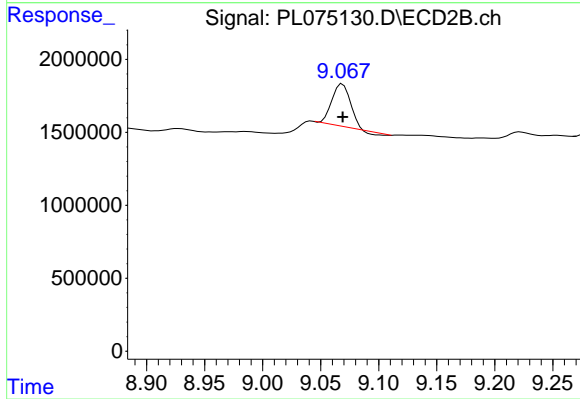
Instrument :  
 ECD\_L  
 ClientSampleId :



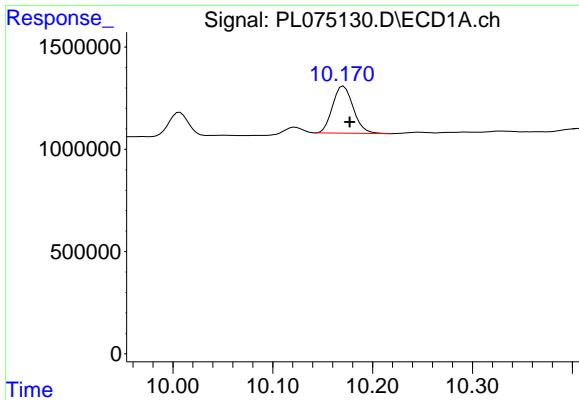
#19 Endosulfan Sulfate  
 R.T.: 8.779 min  
 Delta R.T.: -0.014 min  
 Response: 6980276  
 Conc: 6.41 ng/ml



#20 Methoxychlor  
 R.T.: 10.007 min  
 Delta R.T.: -0.006 min  
 Response: 1572327  
 Conc: 6.42 ng/ml



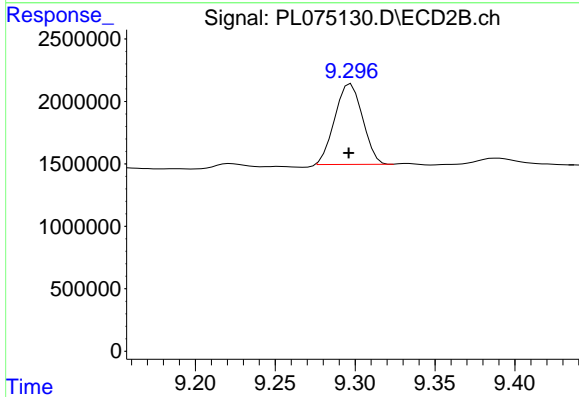
#20 Methoxychlor  
 R.T.: 9.069 min  
 Delta R.T.: 0.000 min  
 Response: 3141149  
 Conc: 5.38 ng/ml



#21 Endrin ketone

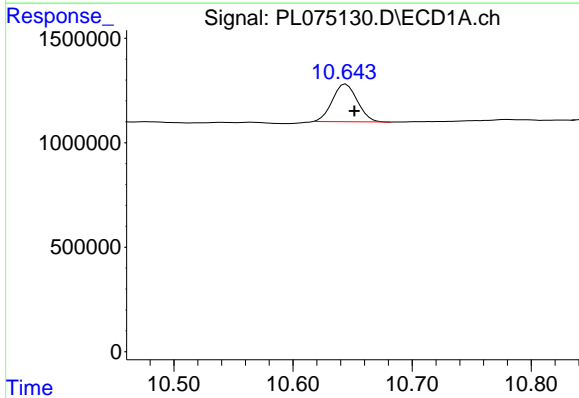
R.T.: 10.171 min  
 Delta R.T.: -0.006 min  
 Response: 3315925  
 Conc: 6.47 ng/ml

Instrument :  
 ECD\_L  
 ClientSampleId :



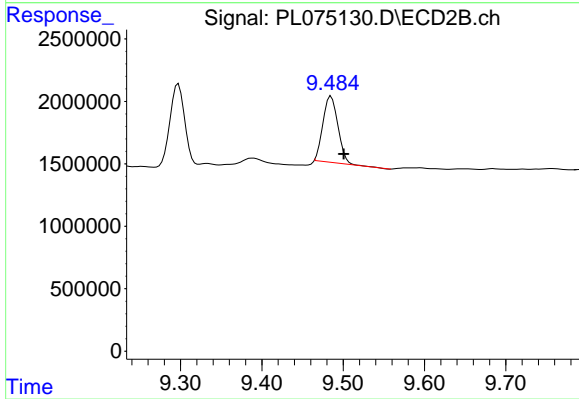
#21 Endrin ketone

R.T.: 9.297 min  
 Delta R.T.: 0.001 min  
 Response: 7798990  
 Conc: 7.00 ng/ml



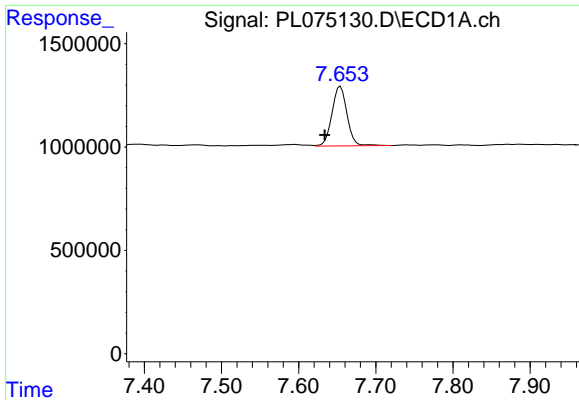
#22 Mirex

R.T.: 10.644 min  
 Delta R.T.: -0.007 min  
 Response: 2627775  
 Conc: 6.51 ng/ml



#22 Mirex

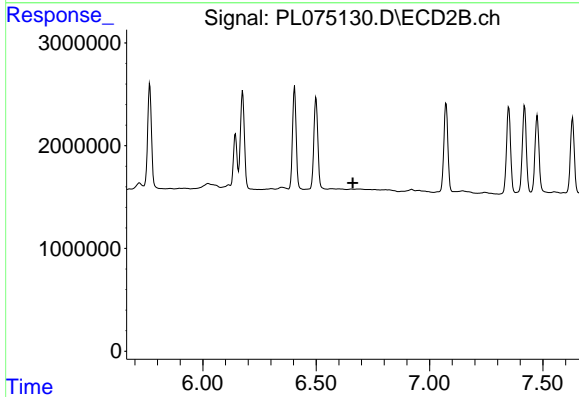
R.T.: 9.485 min  
 Delta R.T.: -0.016 min  
 Response: 6739289  
 Conc: 6.96 ng/ml



#24 Chlordane-2

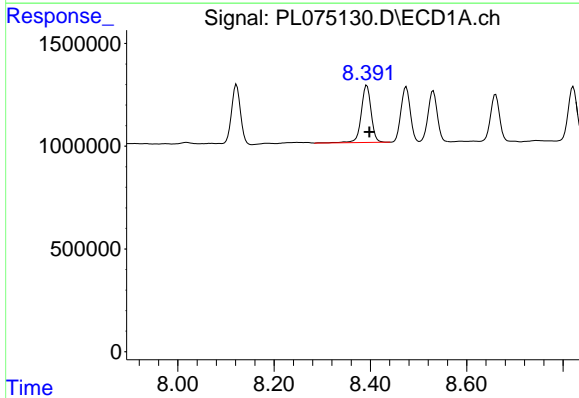
R.T.: 7.654 min  
 Delta R.T.: 0.020 min  
 Response: 3925621  
 Conc: 177.12 ng/ml

Instrument :  
 ECD\_L  
 ClientSampleId :



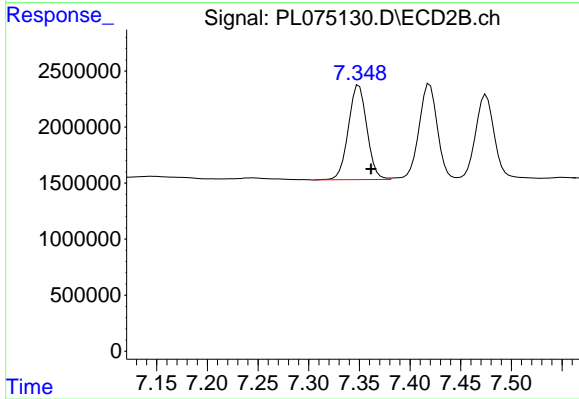
#24 Chlordane-2

R.T.: 0.000 min  
 Exp R.T. : 6.662 min  
 Response: 0  
 Conc: N.D.



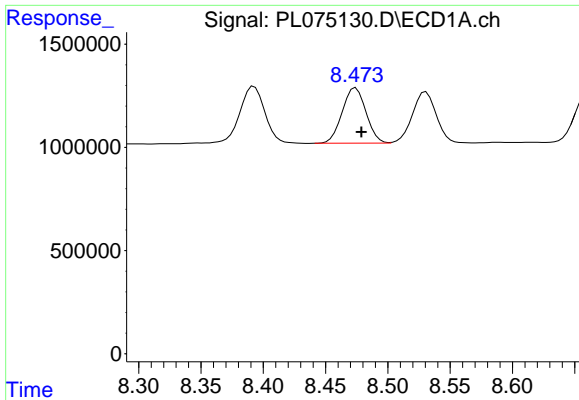
#25 Chlordane-3

R.T.: 8.393 min  
 Delta R.T.: -0.005 min  
 Response: 3980979  
 Conc: 58.15 ng/ml



#25 Chlordane-3

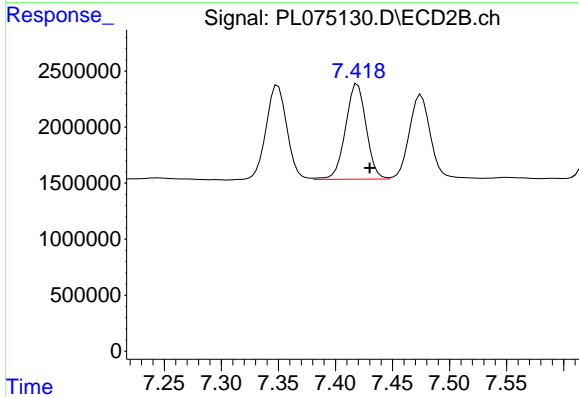
R.T.: 7.350 min  
 Delta R.T.: -0.012 min  
 Response: 10706987  
 Conc: 82.49 ng/ml



#26 Chlordane-4

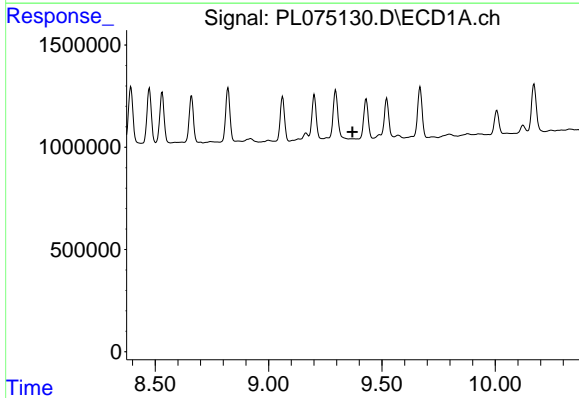
R.T.: 8.474 min  
 Delta R.T.: -0.005 min  
 Response: 3587540  
 Conc: 37.24 ng/ml

Instrument :  
 ECD\_L  
 ClientSampleId :



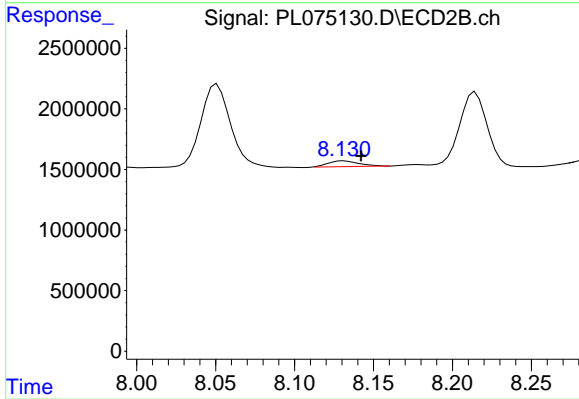
#26 Chlordane-4

R.T.: 7.419 min  
 Delta R.T.: -0.011 min  
 Response: 10695378  
 Conc: 78.02 ng/ml



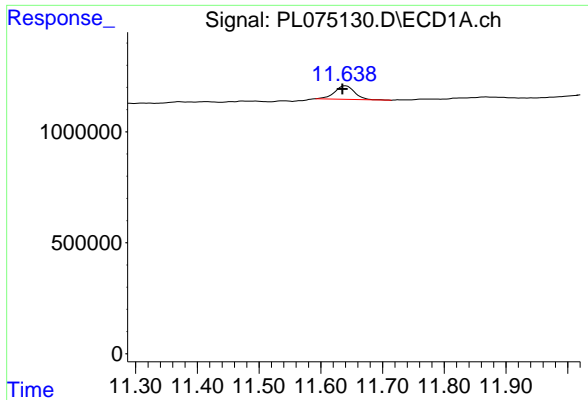
#27 Chlordane-5

R.T.: 0.000 min  
 Exp R.T. : 9.371 min  
 Response: 0  
 Conc: N.D.



#27 Chlordane-5

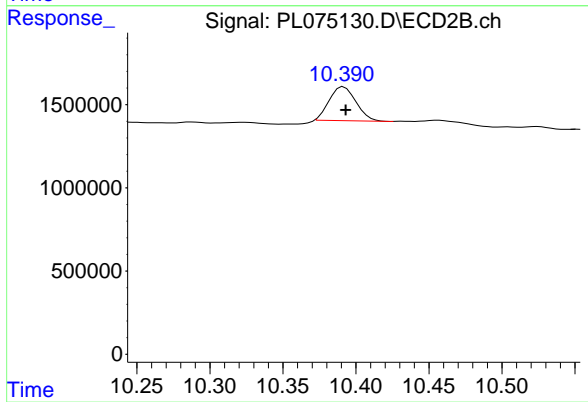
R.T.: 8.131 min  
 Delta R.T.: -0.011 min  
 Response: 638255  
 Conc: 17.26 ng/ml



#28 Decachlorobiphenyl

R.T.: 11.640 min  
Delta R.T.: 0.005 min  
Response: 1376741  
Conc: 3.08 ng/ml

Instrument :  
ECD\_L  
ClientSampleId :



#28 Decachlorobiphenyl

R.T.: 10.392 min  
Delta R.T.: -0.001 min  
Response: 2584551  
Conc: 2.52 ng/ml