

Data Path : Z:\pestpcbsrv\HPCHEM1\ECD_L\Data\PL052722\
 Data File : PL075115.D
 Signal(s) : Signal #1: ECD1A.ch Signal #2: ECD2B.ch
 Acq On : 27 May 2022 14:25
 Operator : AR\AJ
 Sample : N2924-01
 Misc :
 ALS Vial : 12 Sample Multiplier: 1

Instrument :
 ECD_L
ClientSampleId :
 P024-SS009-0006-01

Manual Integrations
APPROVED

Reviewed By :Abdul Mirza 05/31/2022
 Supervised By :Ankita Jodhani 05/31/2022

Integration File signal 1: autoint1.e
 Integration File signal 2: autoint2.e
 Quant Time: May 28 02:44:32 2022
 Quant Method : Z:\pestpcbsrv\HPCHEM1\ECD_L\methods\PL051122.M
 Quant Title : GC Extractables
 QLast Update : Sat May 14 02:37:15 2022
 Response via : Initial Calibration
 Integrator: ChemStation

Volume Inj. : 1 µl
 Signal #1 Phase : ZB-MR2 Signal #2 Phase: ZB-MR1
 Signal #1 Info : 30M x 0.32mm x0.2 Signal #2 Info : 30M x 0.32mm x0.5µm

Compound	RT#1	RT#2	Resp#1	Resp#2	ng/ml	ng/ml

System Monitoring Compounds						
1) SA Tetrachlo...	5.643	4.644	4028817	11457245	7.935	8.348
28) SA Decachlor...	11.638	10.390	5834639	13810876	13.065	13.455m

Target Compounds

(f)=RT Delta > 1/2 Window (#)=Amounts differ by > 25% (m)=manual int.

Data Path : Z:\pestpcbsrv\HPCHEM1\ECD_L\Data\PL052722\
Data File : PL075115.D
Signal(s) : Signal #1: ECD1A.ch Signal #2: ECD2B.ch
Acq On : 27 May 2022 14:25
Operator : AR\AJ
Sample : N2924-01
Misc :
ALS Vial : 12 Sample Multiplier: 1

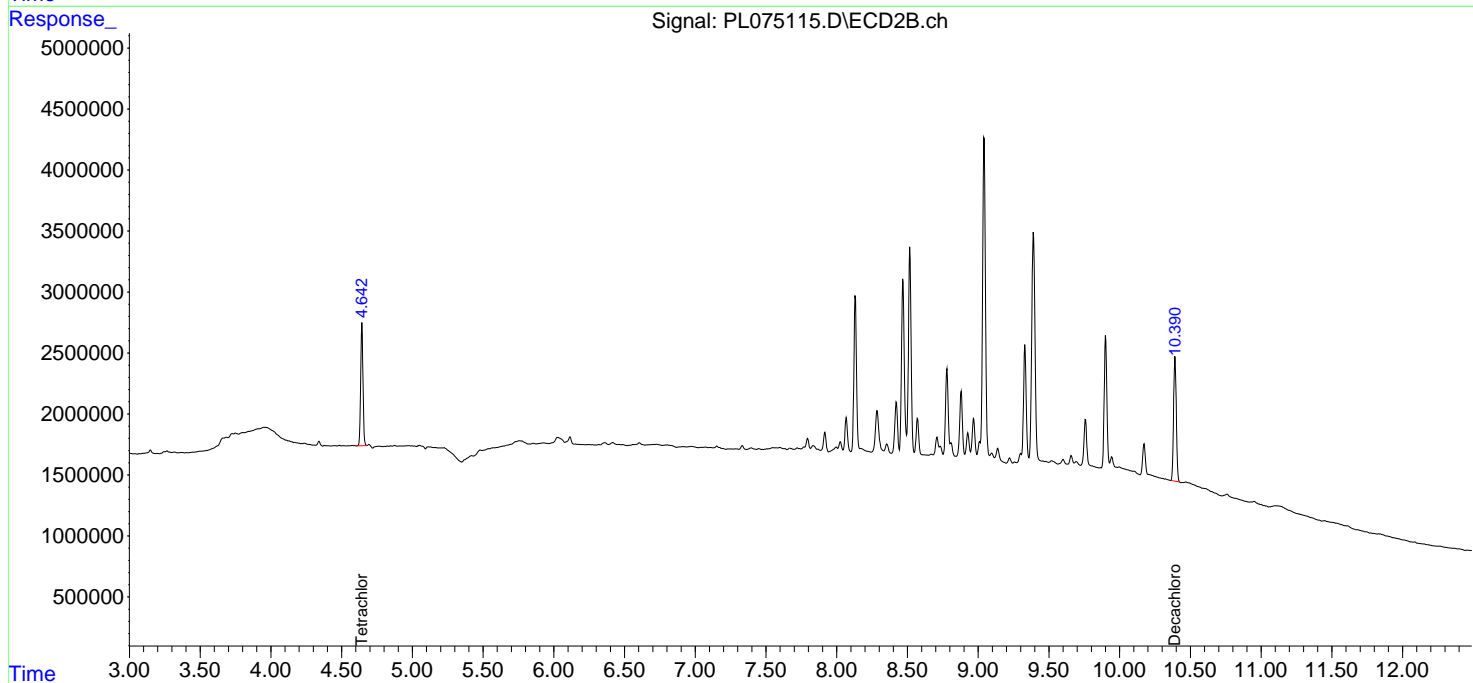
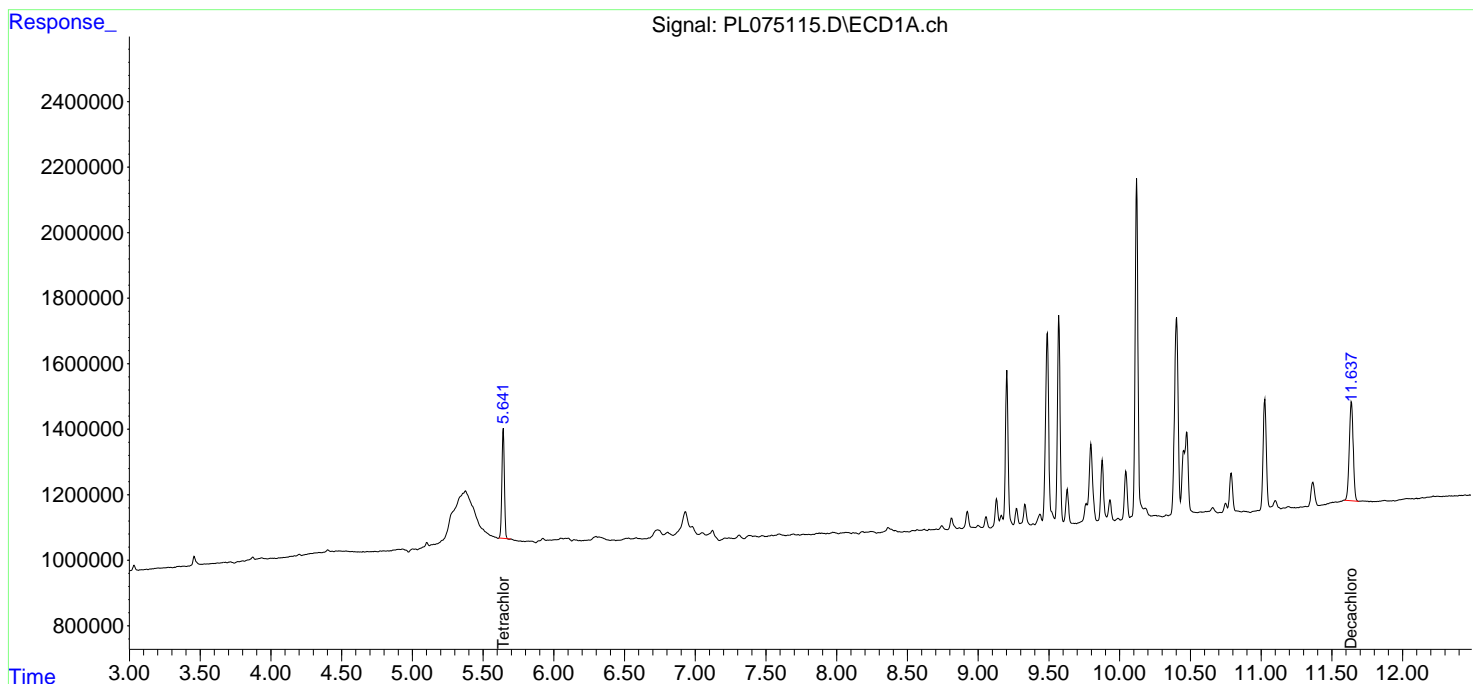
Instrument :
ECD_L
ClientSampleId :
P024-SS009-0006-01

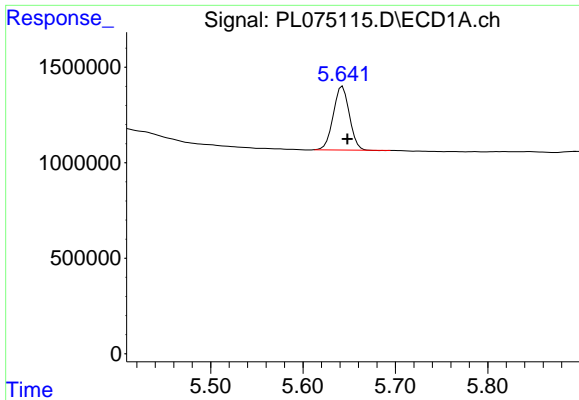
Manual Integrations
APPROVED

Reviewed By :Abdul Mirza 05/31/2022
Supervised By :Ankita Jodhani 05/31/2022

Integration File signal 1: autoint1.e
Integration File signal 2: autoint2.e
Quant Time: May 28 02:44:32 2022
Quant Method : Z:\pestpcbsrv\HPCHEM1\ECD_L\methods\PL051122.M
Quant Title : GC Extractables
QLast Update : Sat May 14 02:37:15 2022
Response via : Initial Calibration
Integrator: ChemStation

Volume Inj. : 1 µl
Signal #1 Phase : ZB-MR2 Signal #2 Phase: ZB-MR1
Signal #1 Info : 30M x 0.32mm x0.2 Signal #2 Info : 30M x 0.32mm x0.5µm



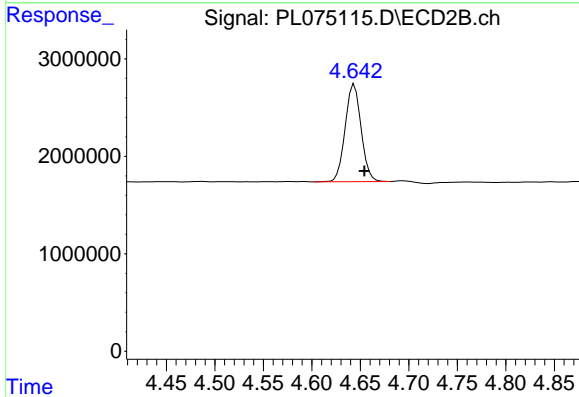


#1 Tetrachloro-m-xylene
 R.T.: 5.643 min
 Delta R.T.: -0.005 min
 Response: 4028817
 Conc: 7.93 ng/ml

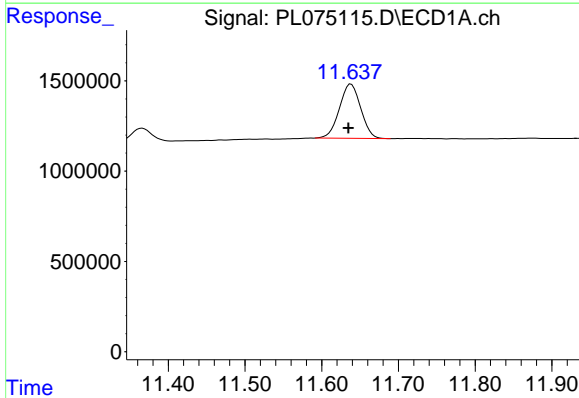
Instrument : ECD_L
 ClientSampleId : P024-SS009-0006-01

Manual Integrations
APPROVED

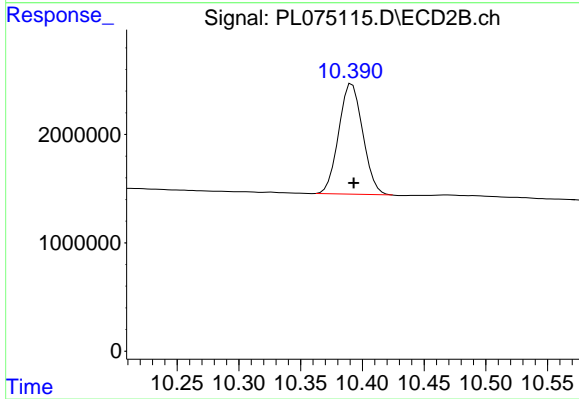
Reviewed By :Abdul Mirza 05/31/2022
 Supervised By :Ankita Jodhani 05/31/2022



#1 Tetrachloro-m-xylene
 R.T.: 4.644 min
 Delta R.T.: -0.011 min
 Response: 11457245
 Conc: 8.35 ng/ml



#28 Decachlorobiphenyl
 R.T.: 11.638 min
 Delta R.T.: 0.003 min
 Response: 5834639
 Conc: 13.07 ng/ml



#28 Decachlorobiphenyl
 R.T.: 10.390 min
 Delta R.T.: -0.003 min
 Response: 13810876
 Conc: 13.46 ng/ml m