

Data Path : Z:\pestpcbsrv\HPCHEM1\ECD_L\Data\PL052722\
 Data File : PL075119.D
 Signal(s) : Signal #1: ECD1A.ch Signal #2: ECD2B.ch
 Acq On : 27 May 2022 15:31
 Operator : AR\AJ
 Sample : N3059-01
 Misc :
 ALS Vial : 16 Sample Multiplier: 1

Instrument :
 ECD_L
ClientSampleId :
 4922A

Manual Integrations
APPROVED

Reviewed By :Abdul Mirza 05/31/2022
 Supervised By :Ankita Jodhani 05/31/2022

Integration File signal 1: autoint1.e
 Integration File signal 2: autoint2.e
 Quant Time: May 28 02:45:35 2022
 Quant Method : Z:\pestpcbsrv\HPCHEM1\ECD_L\methods\PL051122.M
 Quant Title : GC Extractables
 QLast Update : Sat May 14 02:37:15 2022
 Response via : Initial Calibration
 Integrator: ChemStation

Volume Inj. : 1 µl
 Signal #1 Phase : ZB-MR2 Signal #2 Phase: ZB-MR1
 Signal #1 Info : 30M x 0.32mm x0.2 Signal #2 Info : 30M x 0.32mm x0.5µm

Compound	RT#1	RT#2	Resp#1	Resp#2	ng/ml	ng/ml

System Monitoring Compounds						
1) SA Tetrachlo...	5.642	4.644	7011786	19786848	13.810	14.416
28) SA Decachlor...	11.641	10.390	6151295	12939296	13.774	12.606m

Target Compounds

(f)=RT Delta > 1/2 Window (#)=Amounts differ by > 25% (m)=manual int.

Data Path : Z:\pestpcbsrv\HPCHEM1\ECD_L\Data\PL052722\
 Data File : PL075119.D
 Signal(s) : Signal #1: ECD1A.ch Signal #2: ECD2B.ch
 Acq On : 27 May 2022 15:31
 Operator : AR\AJ
 Sample : N3059-01
 Misc :
 ALS Vial : 16 Sample Multiplier: 1

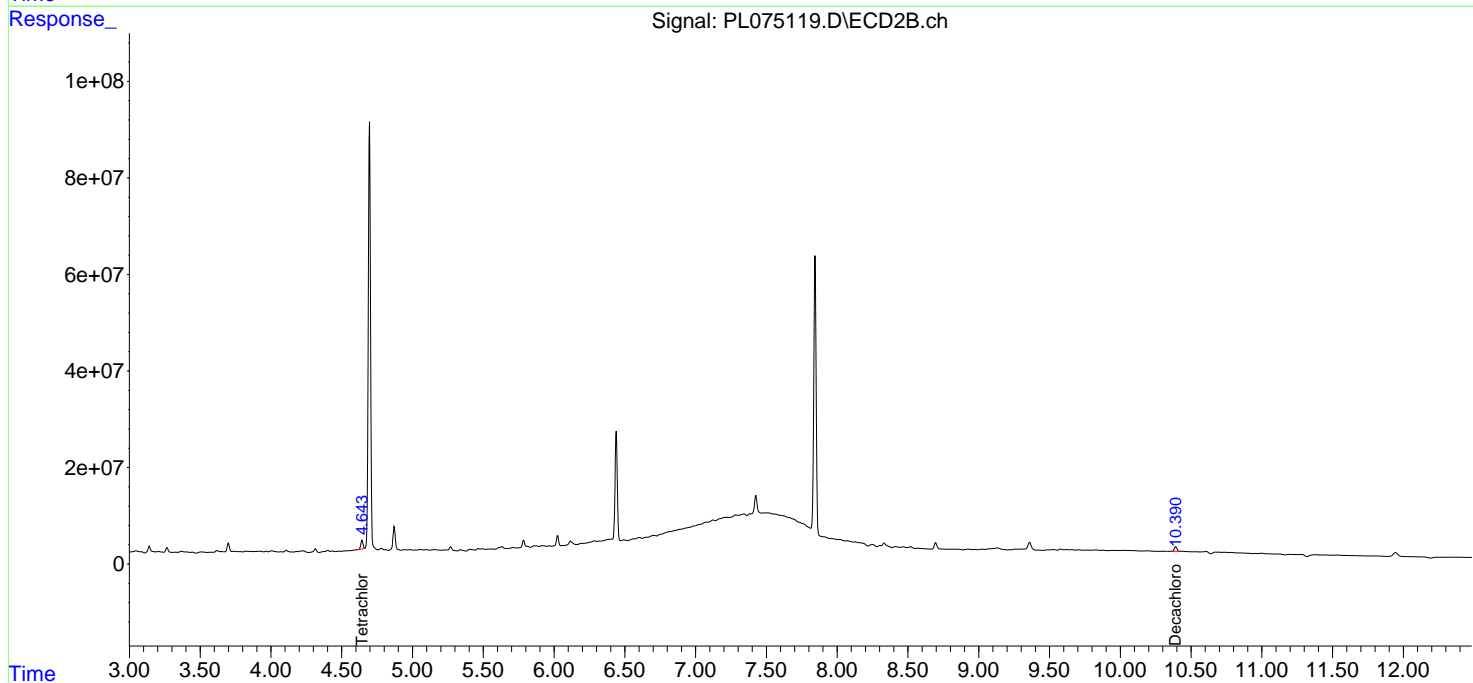
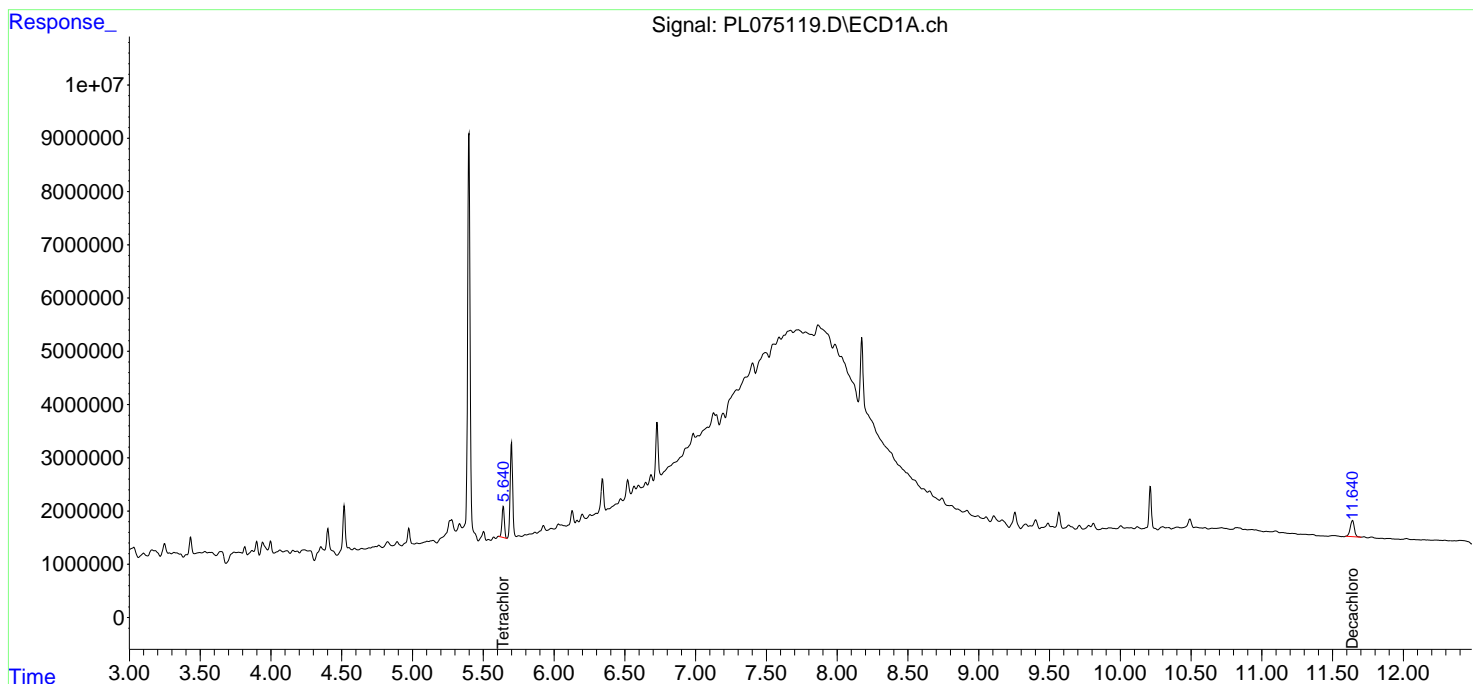
Instrument :
 ECD_L
 ClientSampleId :
 4922A

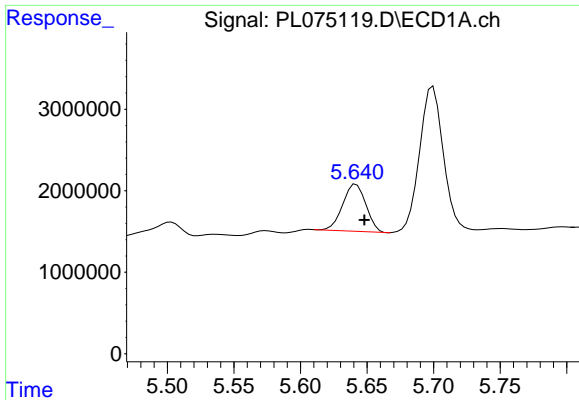
Manual Integrations
 APPROVED

Reviewed By :Abdul Mirza 05/31/2022
 Supervised By :Ankita Jodhani 05/31/2022

Integration File signal 1: autoint1.e
 Integration File signal 2: autoint2.e
 Quant Time: May 28 02:45:35 2022
 Quant Method : Z:\pestpcbsrv\HPCHEM1\ECD_L\methods\PL051122.M
 Quant Title : GC Extractables
 QLast Update : Sat May 14 02:37:15 2022
 Response via : Initial Calibration
 Integrator: ChemStation

Volume Inj. : 1 µl
 Signal #1 Phase : ZB-MR2 Signal #2 Phase: ZB-MR1
 Signal #1 Info : 30M x 0.32mm x0.2 Signal #2 Info : 30M x 0.32mm x0.5µm





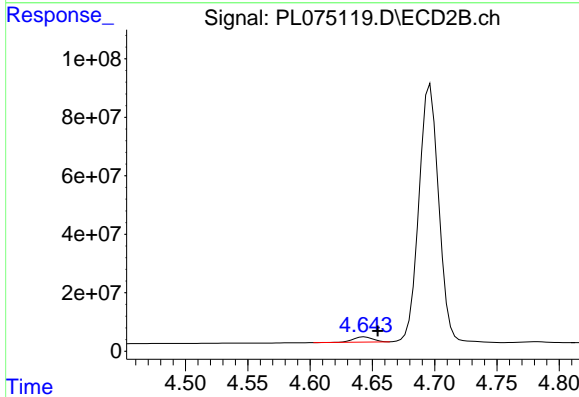
#1 Tetrachloro-m-xylene

R.T.: 5.642 min
 Delta R.T.: -0.006 min
 Response: 7011786
 Conc: 13.81 ng/ml

Instrument :
 ECD_L
 ClientSampleId :
 4922A

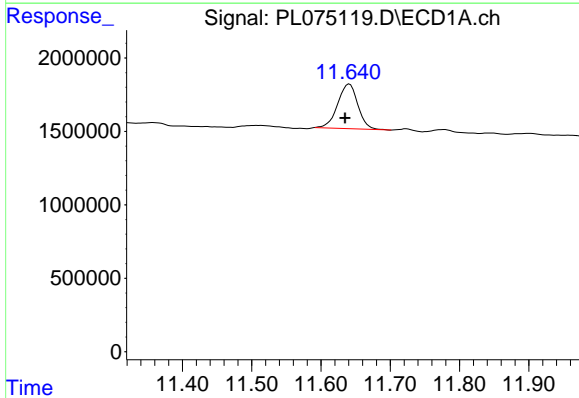
Manual Integrations
 APPROVED

Reviewed By :Abdul Mirza 05/31/2022
 Supervised By :Ankita Jodhani 05/31/2022



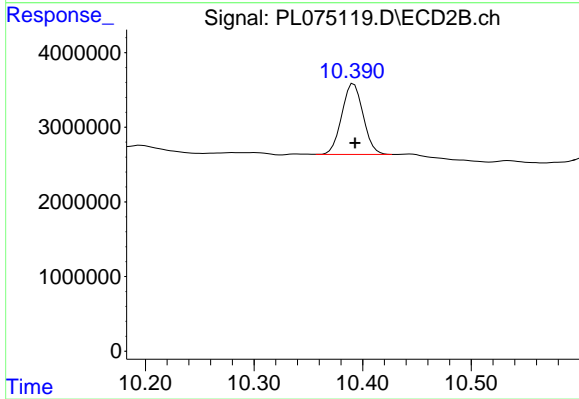
#1 Tetrachloro-m-xylene

R.T.: 4.644 min
 Delta R.T.: -0.010 min
 Response: 19786848
 Conc: 14.42 ng/ml



#28 Decachlorobiphenyl

R.T.: 11.641 min
 Delta R.T.: 0.006 min
 Response: 6151295
 Conc: 13.77 ng/ml



#28 Decachlorobiphenyl

R.T.: 10.390 min
 Delta R.T.: -0.003 min
 Response: 12939296
 Conc: 12.61 ng/ml m