

Data Path : Z:\pestpcbsrv\HPCHEM1\ECD_L\Data\PL052722\
 Data File : PL075137.D
 Signal(s) : Signal #1: ECD1A.ch Signal #2: ECD2B.ch
 Acq On : 27 May 2022 21:37
 Operator : AR\AJ
 Sample : I.BLK
 Misc :
 ALS Vial : 2 Sample Multiplier: 1

Instrument :
 ECD_L
ClientSampleId :
 I.BLK

Manual Integrations
APPROVED
 Reviewed By :Abdul Mirza 05/31/2022
 Supervised By :Ankita Jodhani 05/31/2022

Integration File signal 1: autoint1.e
 Integration File signal 2: autoint2.e
 Quant Time: May 28 02:49:58 2022
 Quant Method : Z:\pestpcbsrv\HPCHEM1\ECD_L\methods\PL051122.M
 Quant Title : GC Extractables
 QLast Update : Sat May 14 02:37:15 2022
 Response via : Initial Calibration
 Integrator: ChemStation

Volume Inj. : 1 µl
 Signal #1 Phase : ZB-MR2 Signal #2 Phase: ZB-MR1
 Signal #1 Info : 30M x 0.32mm x0.2 Signal #2 Info : 30M x 0.32mm x0.5µm

Compound	RT#1	RT#2	Resp#1	Resp#2	ng/ml	ng/ml

System Monitoring Compounds						
1) SA Tetrachlo...	5.643	4.643	12593773	34373683	24.804	25.044m
28) SA Decachlor...	11.641	10.391	11166024	24464708	25.003	23.835m

Target Compounds

(f)=RT Delta > 1/2 Window (#)=Amounts differ by > 25% (m)=manual int.

Data Path : Z:\pestpcbsrv\HPCHEM1\ECD_L\Data\PL052722\
 Data File : PL075137.D
 Signal(s) : Signal #1: ECD1A.ch Signal #2: ECD2B.ch
 Acq On : 27 May 2022 21:37
 Operator : AR\AJ
 Sample : I.BLK
 Misc :
 ALS Vial : 2 Sample Multiplier: 1

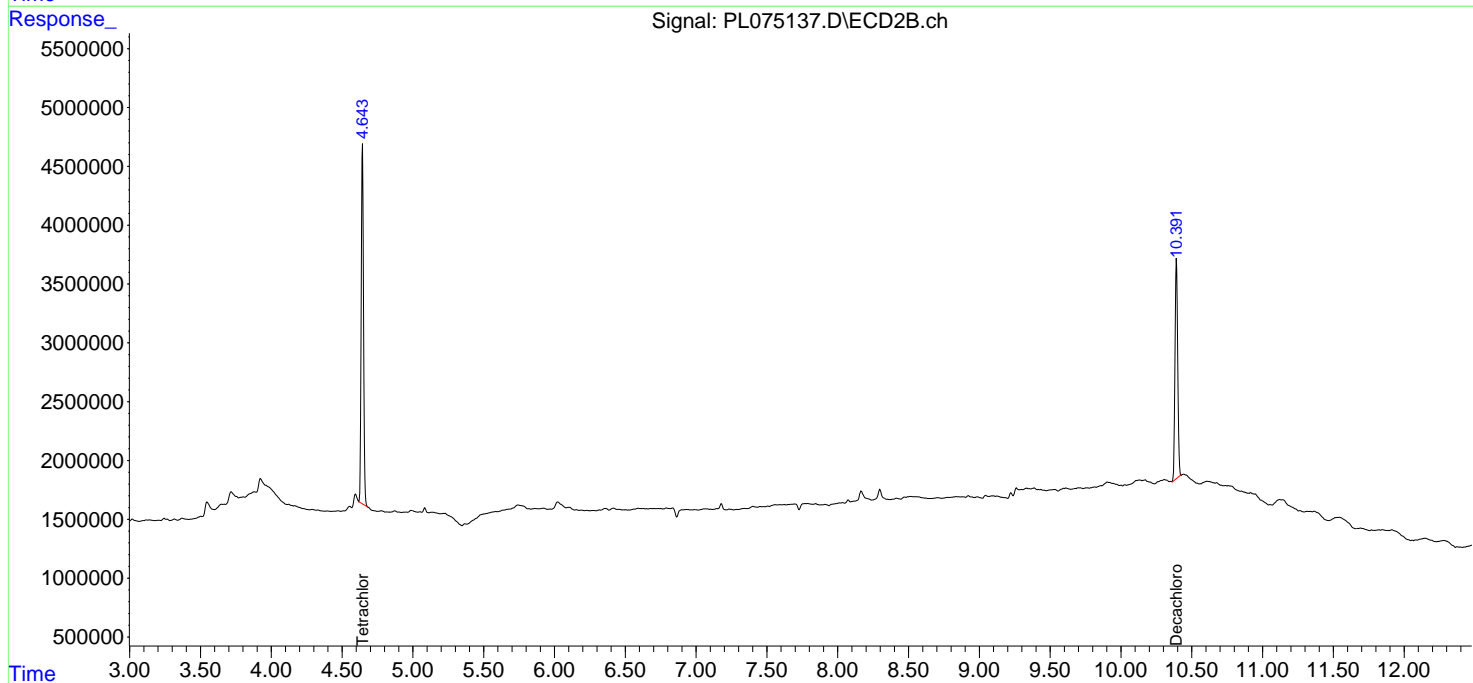
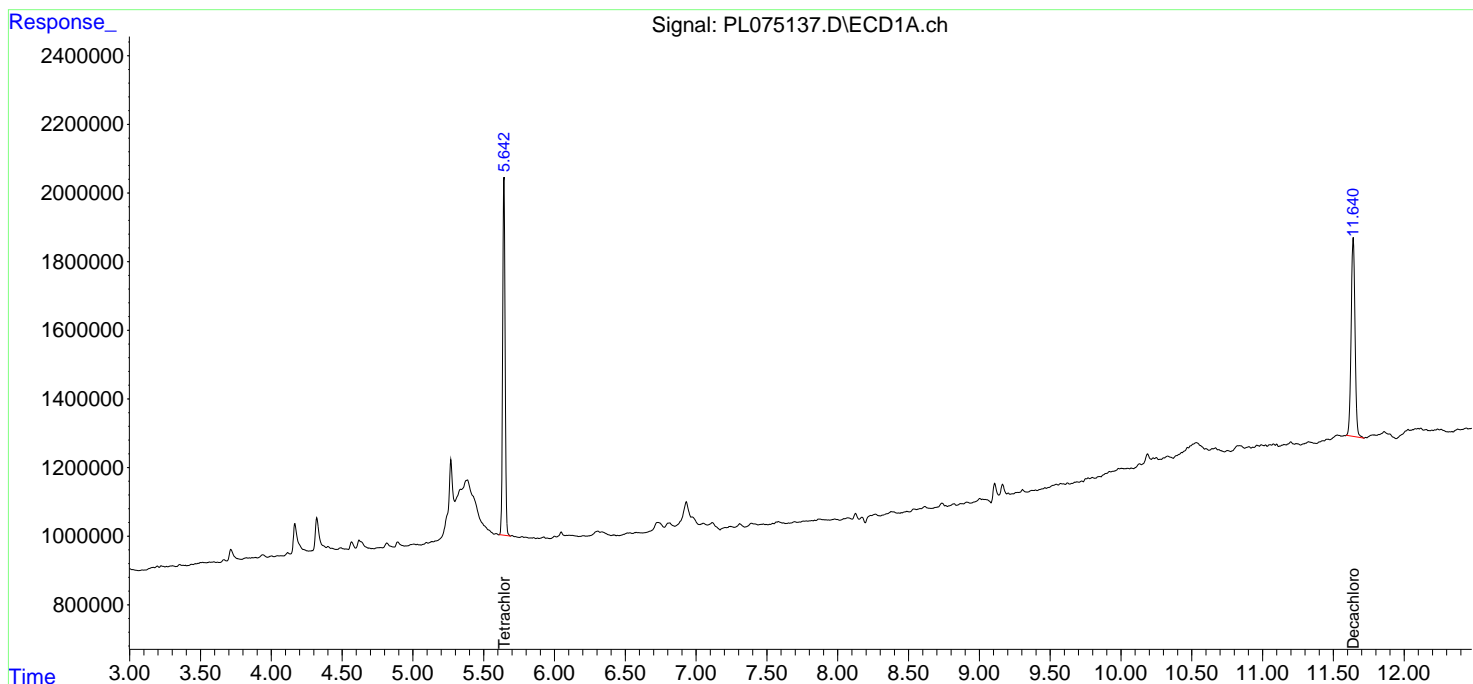
Instrument :
 ECD_L
ClientSampleId :
 I.BLK

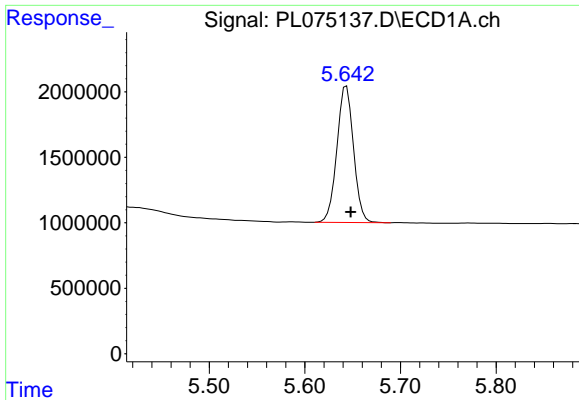
Manual Integrations
APPROVED

Reviewed By :Abdul Mirza 05/31/2022
 Supervised By :Ankita Jodhani 05/31/2022

Integration File signal 1: autoint1.e
 Integration File signal 2: autoint2.e
 Quant Time: May 28 02:49:58 2022
 Quant Method : Z:\pestpcbsrv\HPCHEM1\ECD_L\methods\PL051122.M
 Quant Title : GC Extractables
 QLast Update : Sat May 14 02:37:15 2022
 Response via : Initial Calibration
 Integrator: ChemStation

Volume Inj. : 1 µl
 Signal #1 Phase : ZB-MR2 Signal #2 Phase: ZB-MR1
 Signal #1 Info : 30M x 0.32mm x0.2 Signal #2 Info : 30M x 0.32mm x0.5µm





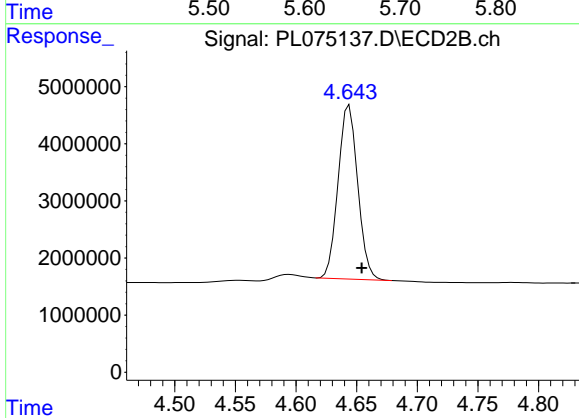
#1 Tetrachloro-m-xylene

R.T.: 5.643 min
 Delta R.T.: -0.005 min
 Response: 12593773
 Conc: 24.80 ng/ml

Instrument :
 ECD_L
 ClientSampleId :
 I.BLK

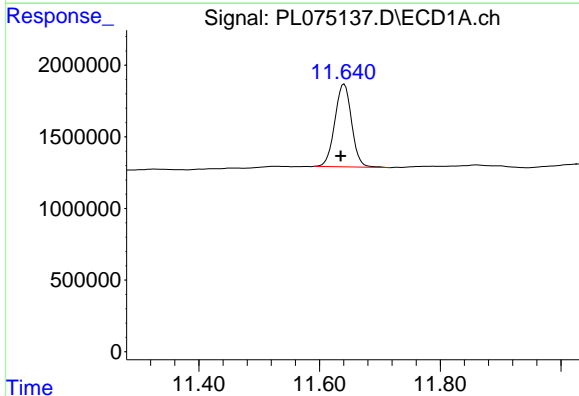
Manual Integrations
 APPROVED

Reviewed By :Abdul Mirza 05/31/2022
 Supervised By :Ankita Jodhani 05/31/2022



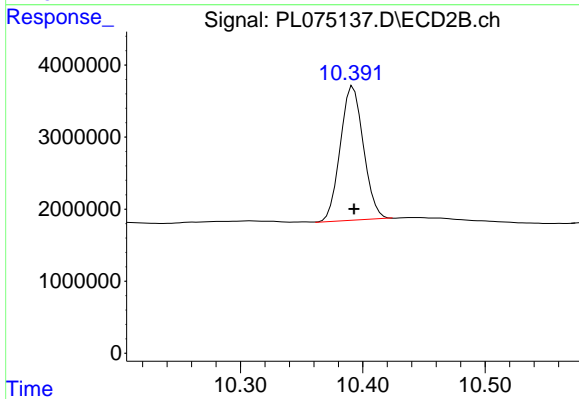
#1 Tetrachloro-m-xylene

R.T.: 4.643 min
 Delta R.T.: -0.012 min
 Response: 34373683
 Conc: 25.04 ng/ml m



#28 Decachlorobiphenyl

R.T.: 11.641 min
 Delta R.T.: 0.006 min
 Response: 11166024
 Conc: 25.00 ng/ml



#28 Decachlorobiphenyl

R.T.: 10.391 min
 Delta R.T.: -0.002 min
 Response: 24464708
 Conc: 23.84 ng/ml m