

Data Path : Z:\pestpcbsrv\HPCHEM1\ECD_L\Data\PL052725\
 Data File : PL095787.D
 Signal(s) : Signal #1: ECD1A.ch Signal #2: ECD2B.ch
 Acq On : 27 May 2025 11:31
 Operator : AR\AJ
 Sample : Q2112-01
 Misc :
 ALS Vial : 10 Sample Multiplier: 1

Instrument :
 ECD_L
 ClientSampleId :

Integration File signal 1: autoint1.e
 Integration File signal 2: autoint2.e
 Quant Time: May 27 13:28:07 2025
 Quant Method : Z:\pestpcbsrv\HPCHEM1\ECD_L\methods\PL052125.M
 Quant Title : GC Extractables
 QLast Update : Thu May 22 06:29:30 2025
 Response via : Initial Calibration
 Integrator: ChemStation

Volume Inj. : 1 µl
 Signal #1 Phase : ZB-MR1 Signal #2 Phase: ZB-MR2
 Signal #1 Info : 30M x 0.32mm x0.5 Signal #2 Info : 30M x 0.32mm x0.25µm

Compound	RT#1	RT#2	Resp#1	Resp#2	ng/ml	ng/ml

System Monitoring Compounds						
1) SA Tetrachlo...	3.571	2.883	32291072	41575563	10.234	10.622
28) SA Decachlor...	9.098	8.058	26350105	40112915	11.183	9.170
Target Compounds						
12) B 4,4'-DDE	6.224	5.370	3524913	9537259	0.961	1.779 #
13) MA Dieldrin	0.000	5.508	0	9286334	N.D.	1.752 #
21) B Endrin ke...	7.668	0.000	10128115	0	3.198	N.D. #
22) Mirex	8.150	7.201f	103.9E6	21773055	44.920	5.362 #

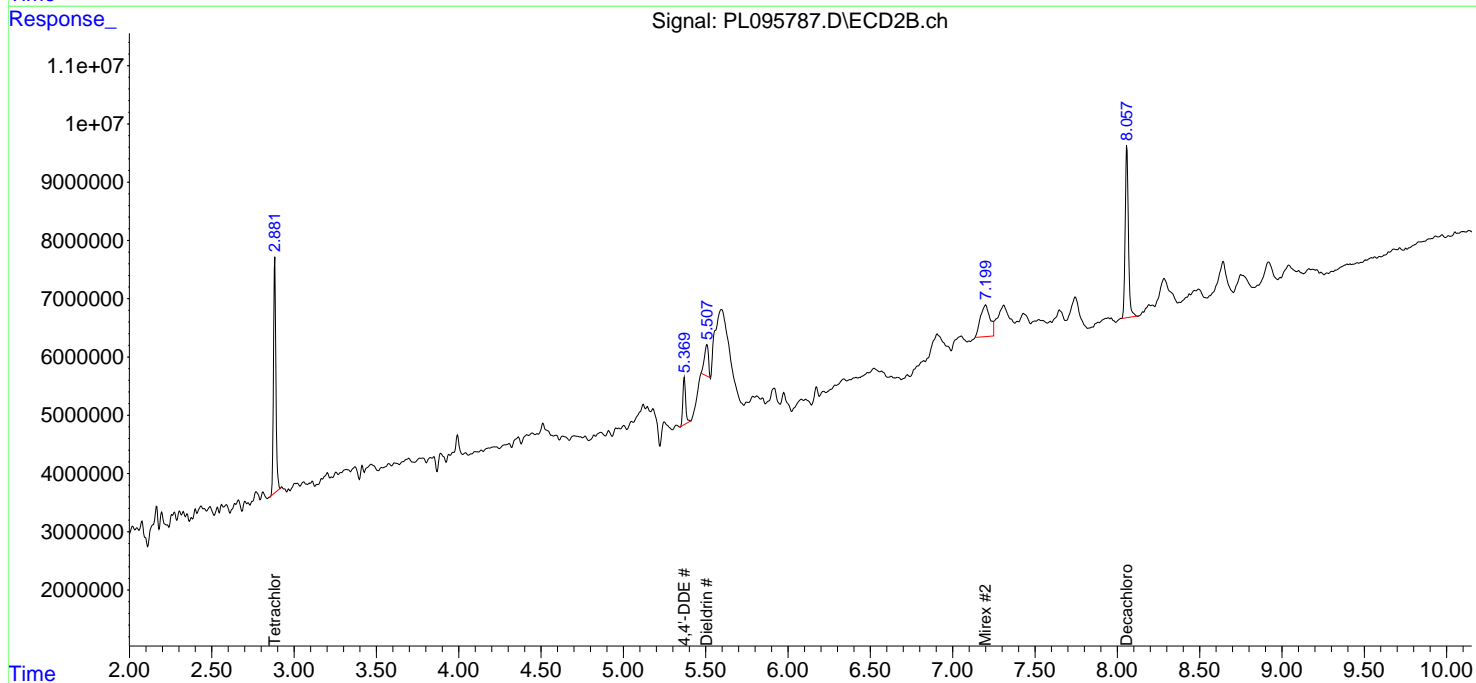
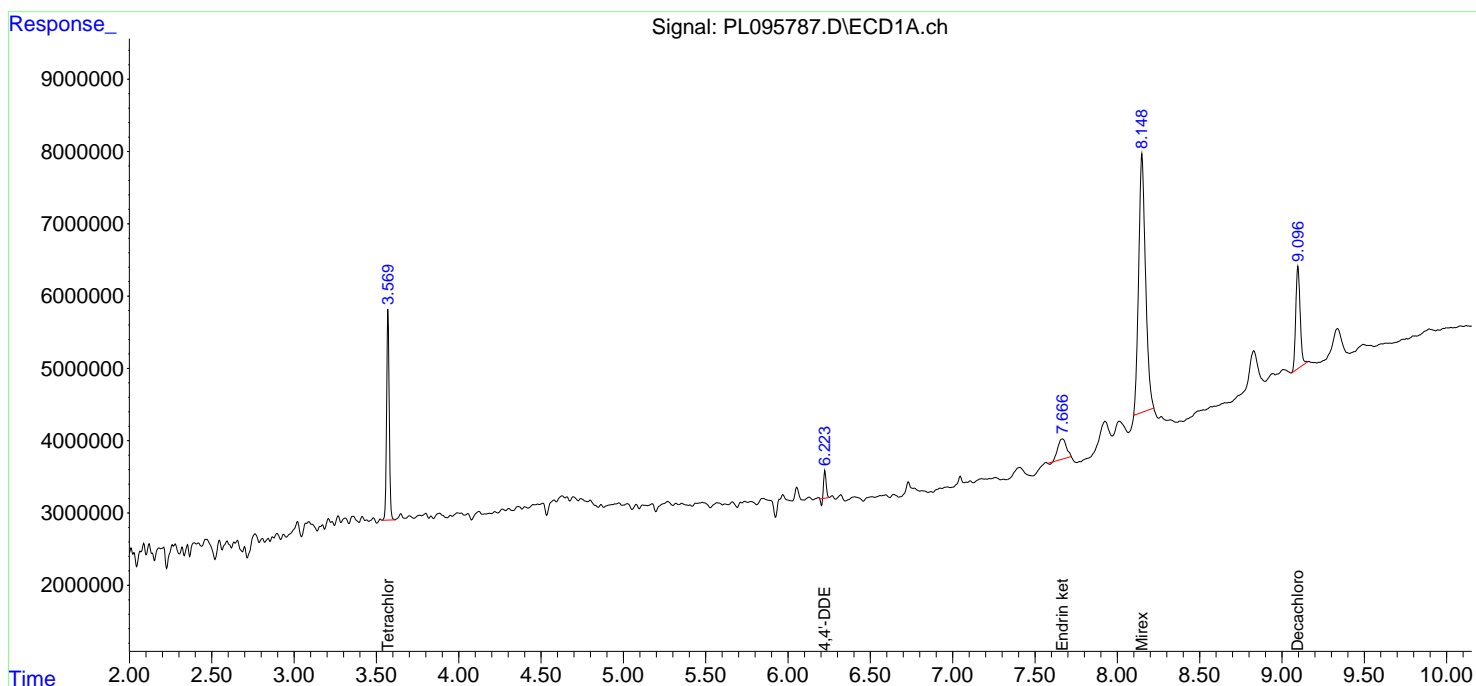
(f)=RT Delta > 1/2 Window (#)=Amounts differ by > 25% (m)=manual int.

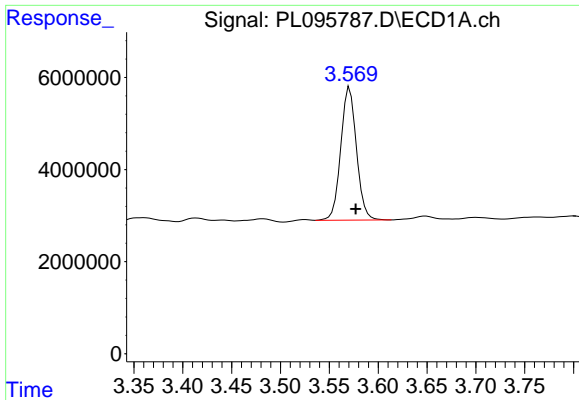
Data Path : Z:\pestpcbsrv\HPCHEM1\ECD_L\Data\PL052725\
 Data File : PL095787.D
 Signal(s) : Signal #1: ECD1A.ch Signal #2: ECD2B.ch
 Acq On : 27 May 2025 11:31
 Operator : AR\AJ
 Sample : Q2112-01
 Misc :
 ALS Vial : 10 Sample Multiplier: 1

Instrument :
 ECD_L
 ClientSampleId :

Integration File signal 1: autoint1.e
 Integration File signal 2: autoint2.e
 Quant Time: May 27 13:28:07 2025
 Quant Method : Z:\pestpcbsrv\HPCHEM1\ECD_L\methods\PL052125.M
 Quant Title : GC Extractables
 QLast Update : Thu May 22 06:29:30 2025
 Response via : Initial Calibration
 Integrator: ChemStation

Volume Inj. : 1 µl
 Signal #1 Phase : ZB-MR1 Signal #2 Phase: ZB-MR2
 Signal #1 Info : 30M x 0.32mm x0.5 Signal #2 Info : 30M x 0.32mm x0.25µm

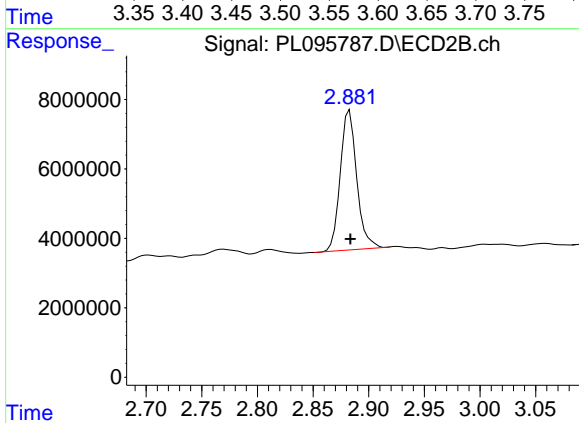




#1 Tetrachloro-m-xylene

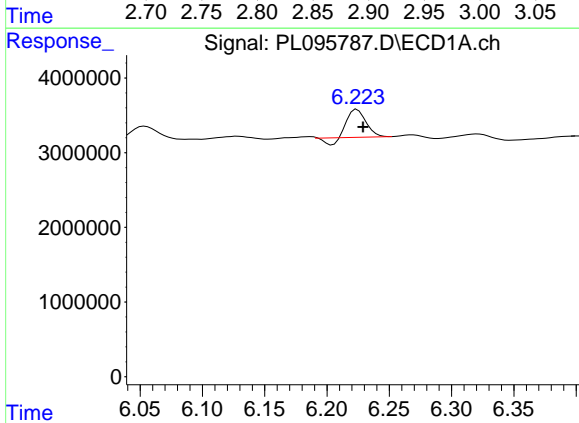
R.T.: 3.571 min
 Delta R.T.: -0.006 min
 Response: 32291072
 Conc: 10.23 ng/ml

Instrument :
 ECD_L
 ClientSampleId :



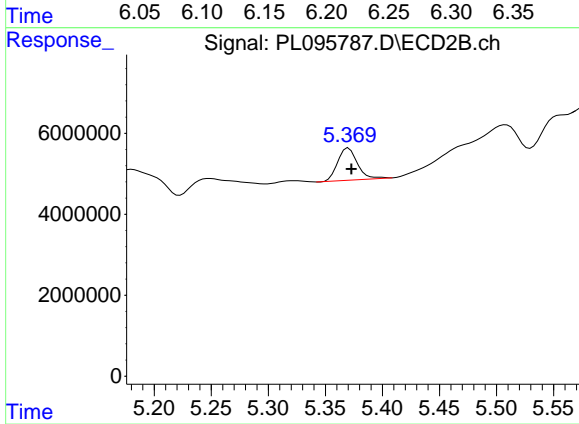
#1 Tetrachloro-m-xylene

R.T.: 2.883 min
 Delta R.T.: 0.000 min
 Response: 41575563
 Conc: 10.62 ng/ml



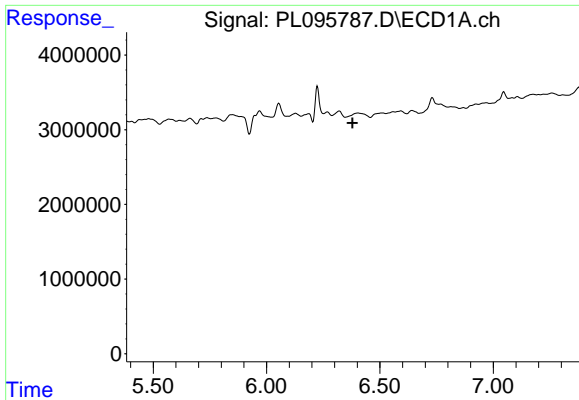
#12 4,4'-DDE

R.T.: 6.224 min
 Delta R.T.: -0.005 min
 Response: 3524913
 Conc: 0.96 ng/ml



#12 4,4'-DDE

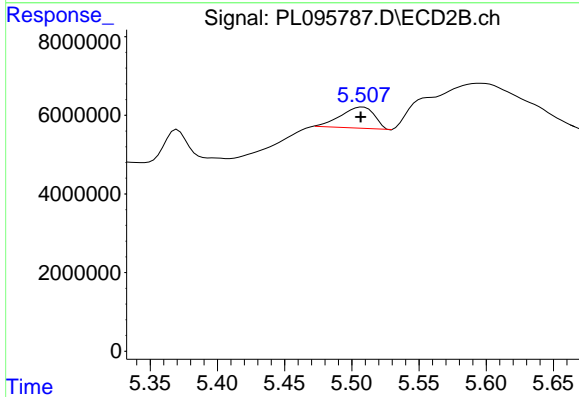
R.T.: 5.370 min
 Delta R.T.: -0.003 min
 Response: 9537259
 Conc: 1.78 ng/ml



#13 Dieldrin

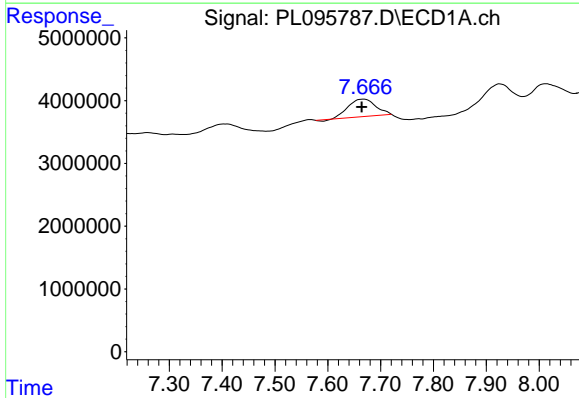
R.T.: 0.000 min
 Exp R.T.: 6.379 min
 Response: 0
 Conc: N.D.

Instrument :
 ECD_L
 ClientSampleId :



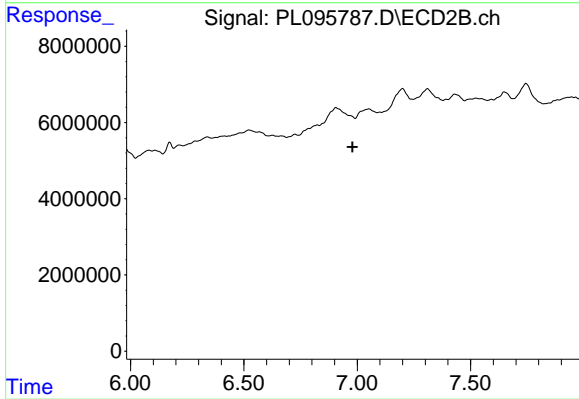
#13 Dieldrin

R.T.: 5.508 min
 Delta R.T.: 0.001 min
 Response: 9286334
 Conc: 1.75 ng/ml



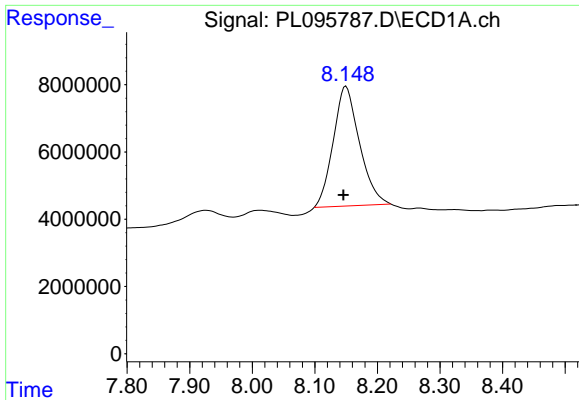
#21 Endrin ketone

R.T.: 7.668 min
 Delta R.T.: 0.004 min
 Response: 10128115
 Conc: 3.20 ng/ml



#21 Endrin ketone

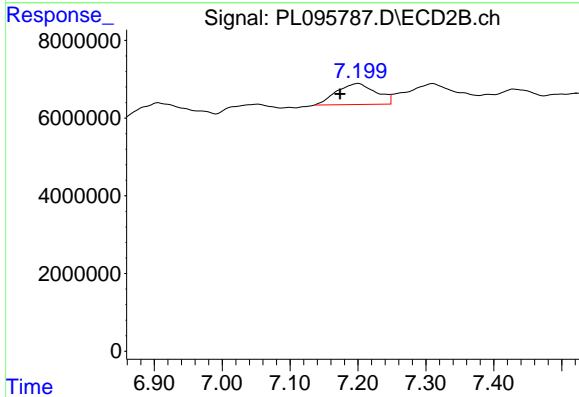
R.T.: 0.000 min
 Exp R.T.: 6.979 min
 Response: 0
 Conc: N.D.



#22 Mirex

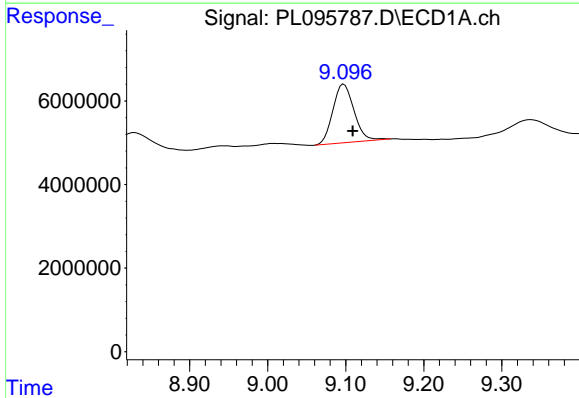
R.T.: 8.150 min
 Delta R.T.: 0.004 min
 Response: 103934229
 Conc: 44.92 ng/ml

Instrument :
 ECD_L
 ClientSampleId :



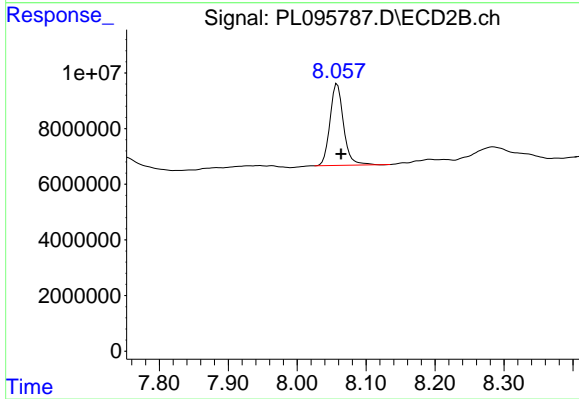
#22 Mirex

R.T.: 7.201 min
 Delta R.T.: 0.027 min
 Response: 21773055
 Conc: 5.36 ng/ml



#28 Decachlorobiphenyl

R.T.: 9.098 min
 Delta R.T.: -0.011 min
 Response: 26350105
 Conc: 11.18 ng/ml



#28 Decachlorobiphenyl

R.T.: 8.058 min
 Delta R.T.: -0.006 min
 Response: 40112915
 Conc: 9.17 ng/ml