

Data Path : Z:\pestpcbsrv\HPCHEM1\ECD\_L\Data\PL052725\  
 Data File : PL095792.D  
 Signal(s) : Signal #1: ECD1A.ch Signal #2: ECD2B.ch  
 Acq On : 27 May 2025 13:19  
 Operator : AR\AJ  
 Sample : PSTDCCC050  
 Misc :  
 ALS Vial : 4 Sample Multiplier: 1

Instrument :  
 ECD\_L  
 ClientSampleId :

Integration File signal 1: autoint1.e  
 Integration File signal 2: autoint2.e  
 Quant Time: May 27 13:56:08 2025  
 Quant Method : Z:\pestpcbsrv\HPCHEM1\ECD\_L\methods\PL052125.M  
 Quant Title : GC Extractables  
 QLast Update : Thu May 22 06:29:30 2025  
 Response via : Initial Calibration  
 Integrator: ChemStation

Volume Inj. : 1 µl  
 Signal #1 Phase : ZB-MR2 Signal #2 Phase: ZB-MR2  
 Signal #1 Info : 30M x 0.32mm x0.5 Signal #2 Info : 30M x 0.32mm x0.25µm

	Compound	RT#1	RT#2	Resp#1	Resp#2	ng/ml	ng/ml
-----							
System Monitoring Compounds							
1)	SA Tetrachlo...	3.576	2.881	168.1E6	208.6E6	53.264	53.308
28)	SA Decachlor...	9.104	8.058	109.5E6	187.1E6	46.456	42.768
Target Compounds							
2)	A alpha-BHC	4.029	3.391	259.1E6	321.4E6	53.439	54.879
3)	MA gamma-BHC...	4.360	3.725	235.5E6	300.9E6	52.663	53.726
4)	MA Heptachlor	4.957	4.078	191.0E6	292.8E6	50.457	52.208
5)	MB Aldrin	5.300	4.363	222.6E6	288.1E6	52.041	54.279
6)	B beta-BHC	4.547	4.021	101.7E6	133.4E6	51.590	53.825
7)	B delta-BHC	4.795	4.256	230.8E6	308.2E6	52.063	54.565
8)	B Heptachlo...	5.721	4.865	195.5E6	260.6E6	51.230	52.775
9)	A Endosulfan I	6.105	5.237	183.6E6	251.1E6	50.100	52.688
10)	B gamma-Chl...	5.976	5.118	200.3E6	278.4E6	51.458	53.001
11)	B alpha-Chl...	6.057	5.182	198.8E6	273.5E6	50.364	52.561
12)	B 4,4'-DDE	6.228	5.369	184.8E6	276.7E6	50.390	51.608
13)	MA Dieldrin	6.378	5.503	193.2E6	274.9E6	50.056	51.865
14)	MA Endrin	6.604	5.777	156.5E6	239.7E6	48.516	49.166
15)	B Endosulfa...	6.818	6.068	166.1E6	232.8E6	48.188	48.998
16)	A 4,4'-DDD	6.737	5.921	141.8E6	220.5E6	48.373	50.277
17)	MA 4,4'-DDT	7.052	6.175	125.7E6	225.2E6	46.468	47.090
18)	B Endrin al...	6.947	6.246	114.1E6	164.6E6	47.184	47.647
19)	B Endosulfa...	7.181	6.469	141.5E6	214.9E6	47.388	47.806
20)	A Methoxychlor	7.524	6.745	60354302	114.6E6	47.325	43.824
21)	B Endrin ke...	7.662	6.975	151.2E6	234.9E6	47.741	45.394
22)	Mirex	8.142	7.168	109.9E6	185.1E6	47.491	45.576
25)	Chlordane-3	5.976	5.118	200.3E6	278.4E6	271.002	422.517 #
26)	Chlordane-4	6.057	5.182	198.8E6	273.5E6	221.238	478.997 #
27)	Chlordane-5	0.000	6.068	0	232.8E6	N.D.	913.281 #

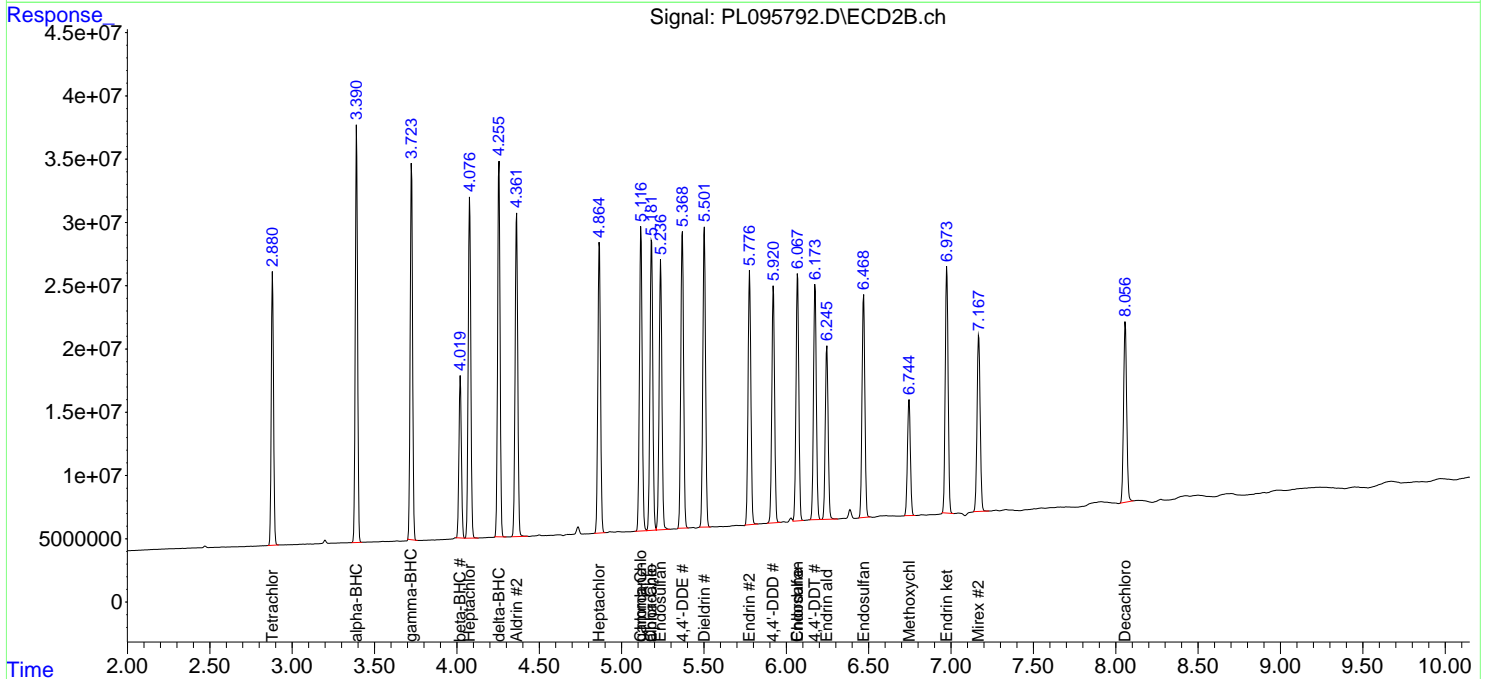
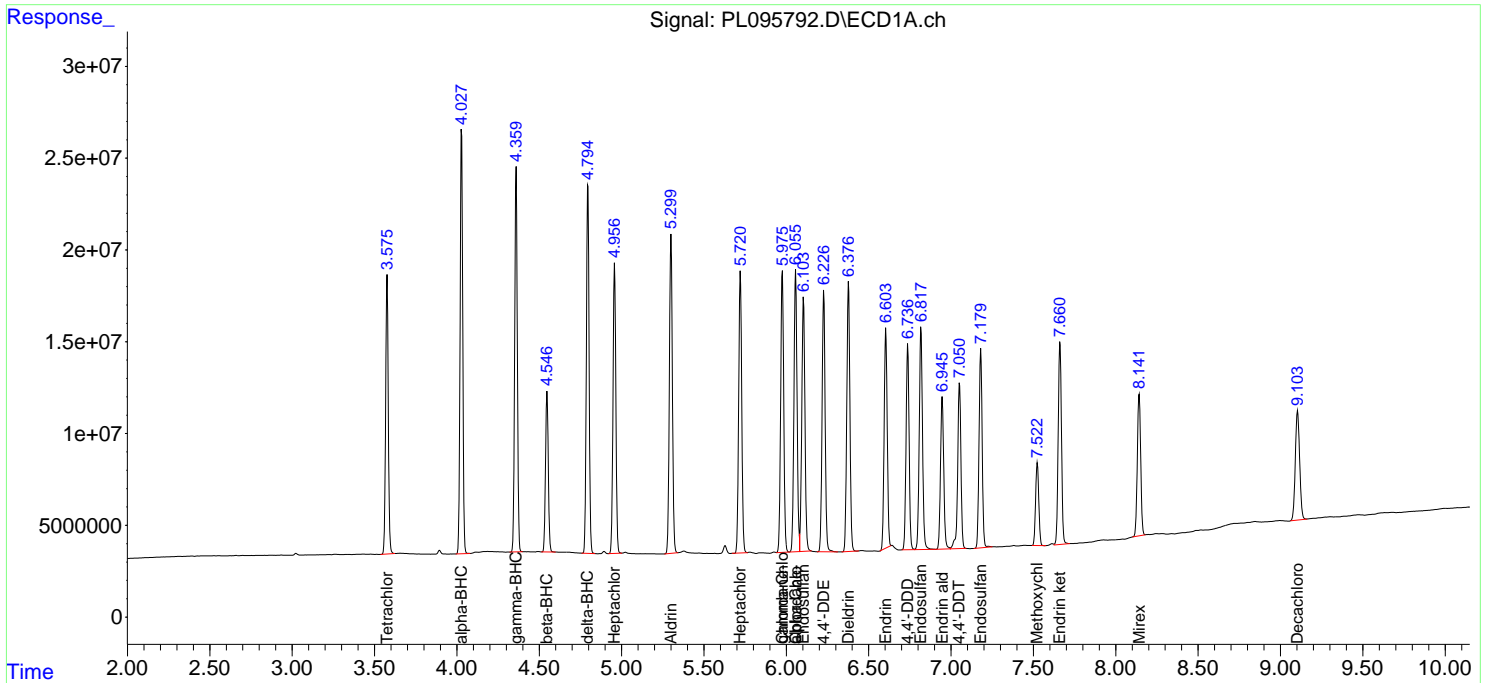
(f)=RT Delta > 1/2 Window (#)=Amounts differ by > 25% (m)=manual int.

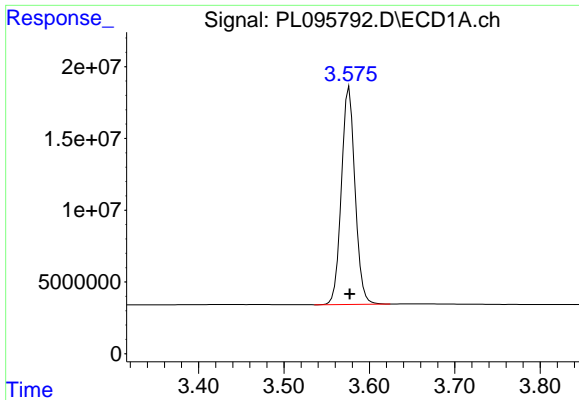
Data Path : Z:\pestpcbsrv\HPCHEM1\ECD\_L\Data\PL052725\  
 Data File : PL095792.D  
 Signal(s) : Signal #1: ECD1A.ch Signal #2: ECD2B.ch  
 Acq On : 27 May 2025 13:19  
 Operator : AR\AJ  
 Sample : PSTDCCC050  
 Misc :  
 ALS Vial : 4 Sample Multiplier: 1

Instrument :  
 ECD\_L  
 ClientSampleId :

Integration File signal 1: autoint1.e  
 Integration File signal 2: autoint2.e  
 Quant Time: May 27 13:56:08 2025  
 Quant Method : Z:\pestpcbsrv\HPCHEM1\ECD\_L\methods\PL052125.M  
 Quant Title : GC Extractables  
 QLast Update : Thu May 22 06:29:30 2025  
 Response via : Initial Calibration  
 Integrator: ChemStation

Volume Inj. : 1 µl  
 Signal #1 Phase : ZB-MR1 Signal #2 Phase: ZB-MR2  
 Signal #1 Info : 30M x 0.32mm x0.5 Signal #2 Info : 30M x 0.32mm x0.25µm

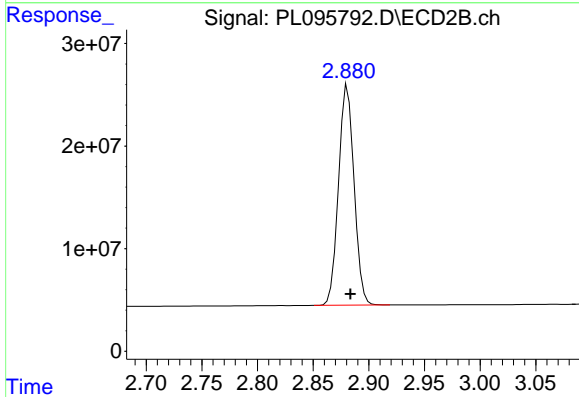




#1 Tetrachloro-m-xylene

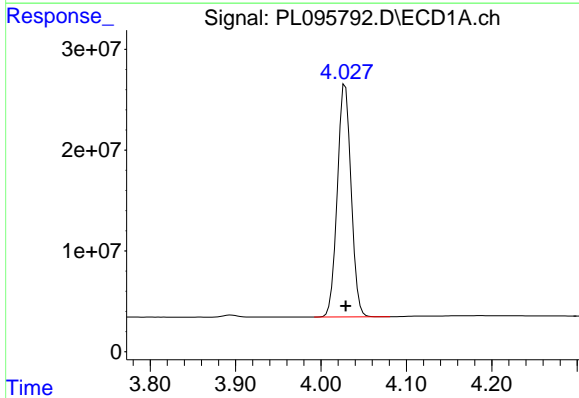
R.T.: 3.576 min  
 Delta R.T.: 0.000 min  
 Response: 168062859  
 Conc: 53.26 ng/ml

Instrument :  
 ECD\_L  
 ClientSampleId :



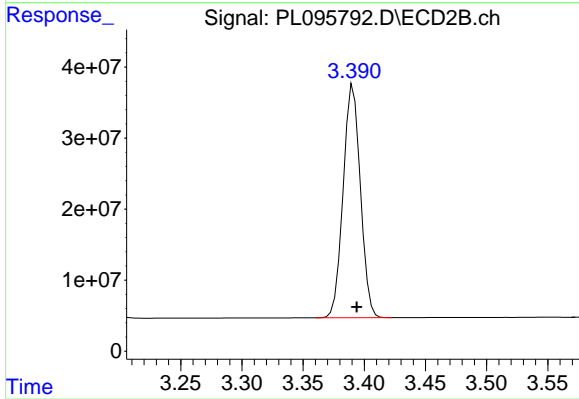
#1 Tetrachloro-m-xylene

R.T.: 2.881 min  
 Delta R.T.: -0.002 min  
 Response: 208644139  
 Conc: 53.31 ng/ml



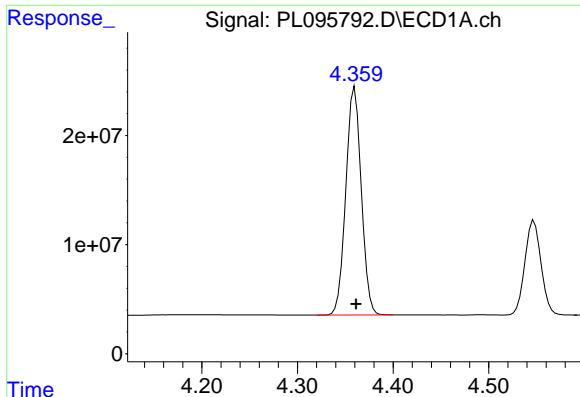
#2 alpha-BHC

R.T.: 4.029 min  
 Delta R.T.: 0.000 min  
 Response: 259069716  
 Conc: 53.44 ng/ml



#2 alpha-BHC

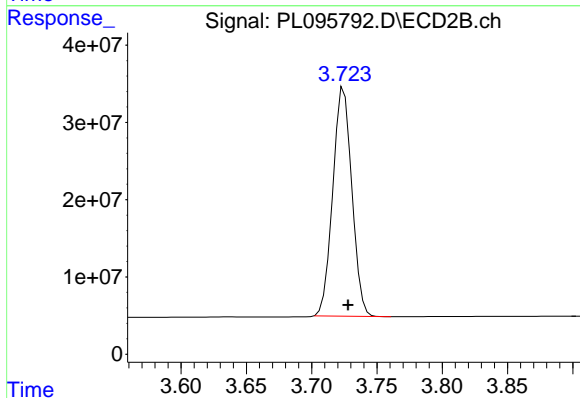
R.T.: 3.391 min  
 Delta R.T.: -0.003 min  
 Response: 321444797  
 Conc: 54.88 ng/ml



#3 gamma-BHC (Lindane)

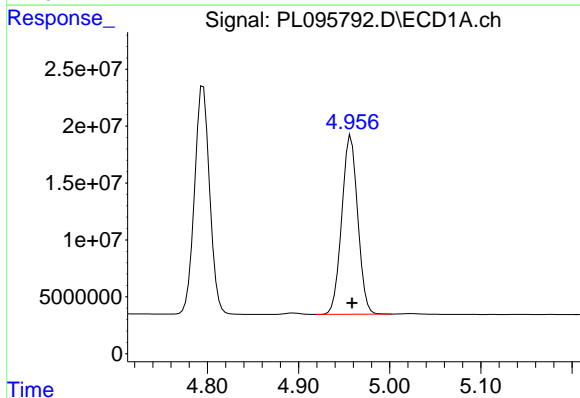
R.T.: 4.360 min  
 Delta R.T.: -0.001 min  
 Response: 235502871  
 Conc: 52.66 ng/ml

Instrument :  
 ECD\_L  
 ClientSampleId :



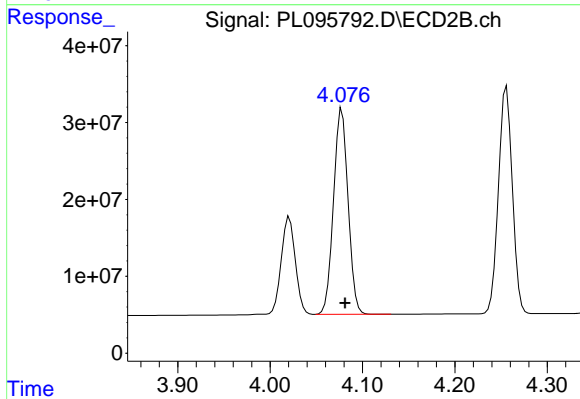
#3 gamma-BHC (Lindane)

R.T.: 3.725 min  
 Delta R.T.: -0.003 min  
 Response: 300930574  
 Conc: 53.73 ng/ml



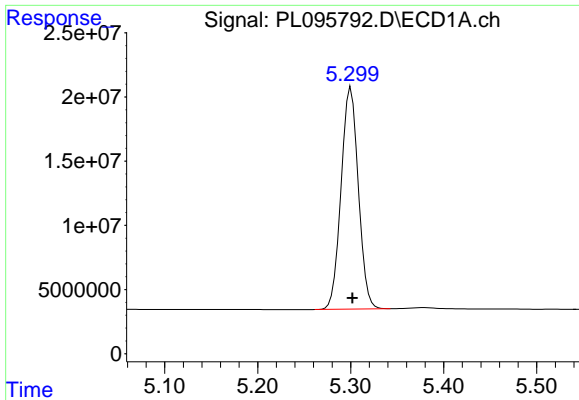
#4 Heptachlor

R.T.: 4.957 min  
 Delta R.T.: -0.001 min  
 Response: 190982579  
 Conc: 50.46 ng/ml



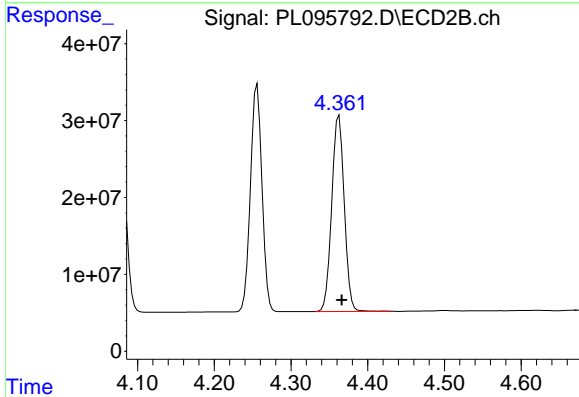
#4 Heptachlor

R.T.: 4.078 min  
 Delta R.T.: -0.003 min  
 Response: 292836625  
 Conc: 52.21 ng/ml

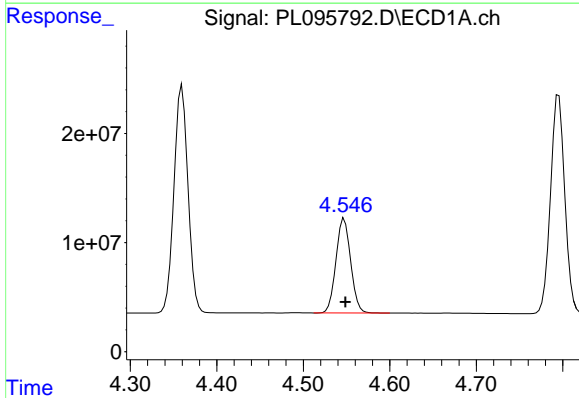


#5 Aldrin  
 R.T.: 5.300 min  
 Delta R.T.: -0.002 min  
 Response: 222616599  
 Conc: 52.04 ng/ml

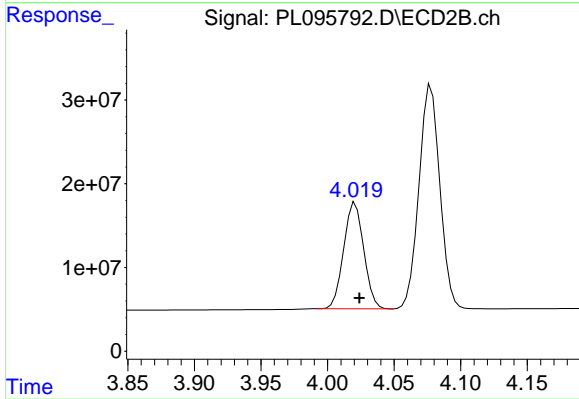
Instrument :  
 ECD\_L  
 ClientSampleId :



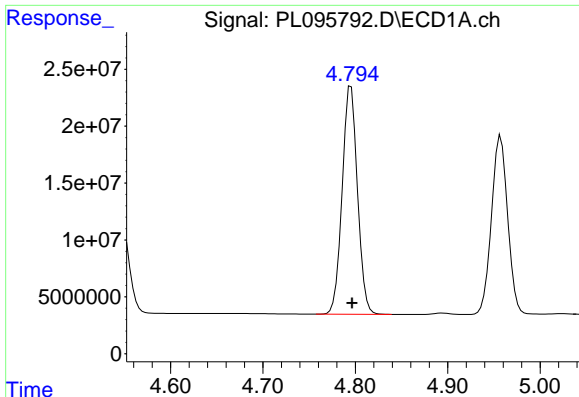
#5 Aldrin  
 R.T.: 4.363 min  
 Delta R.T.: -0.004 min  
 Response: 288066688  
 Conc: 54.28 ng/ml



#6 beta-BHC  
 R.T.: 4.547 min  
 Delta R.T.: -0.001 min  
 Response: 101703041  
 Conc: 51.59 ng/ml



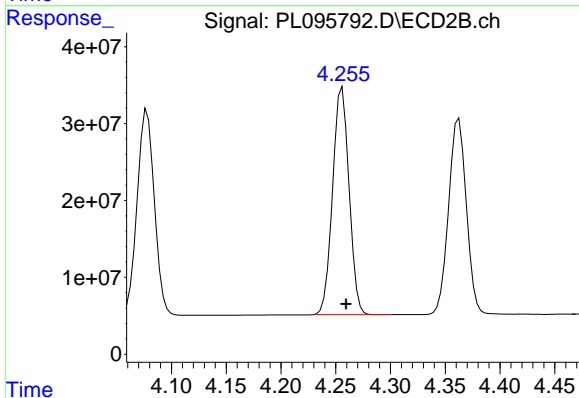
#6 beta-BHC  
 R.T.: 4.021 min  
 Delta R.T.: -0.003 min  
 Response: 133355259  
 Conc: 53.83 ng/ml



#7 delta-BHC

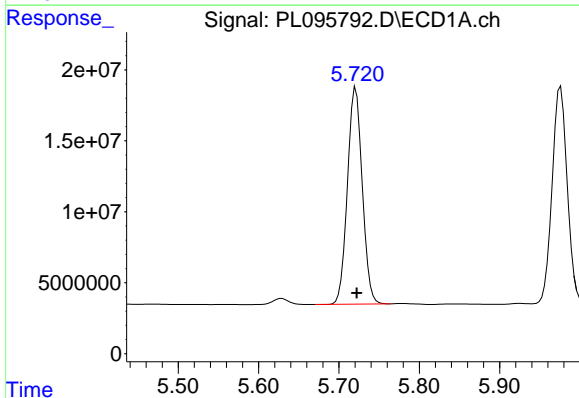
R.T.: 4.795 min  
 Delta R.T.: -0.001 min  
 Response: 230827898  
 Conc: 52.06 ng/ml

Instrument :  
 ECD\_L  
 ClientSampleId :



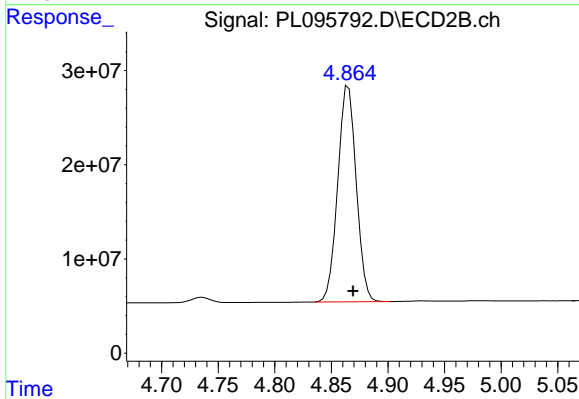
#7 delta-BHC

R.T.: 4.256 min  
 Delta R.T.: -0.004 min  
 Response: 308150413  
 Conc: 54.57 ng/ml



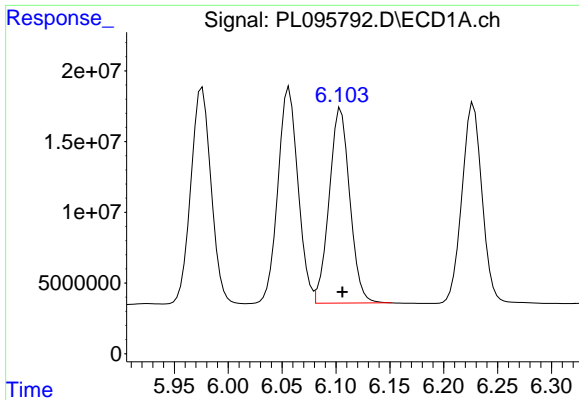
#8 Heptachlor epoxide

R.T.: 5.721 min  
 Delta R.T.: -0.001 min  
 Response: 195538340  
 Conc: 51.23 ng/ml



#8 Heptachlor epoxide

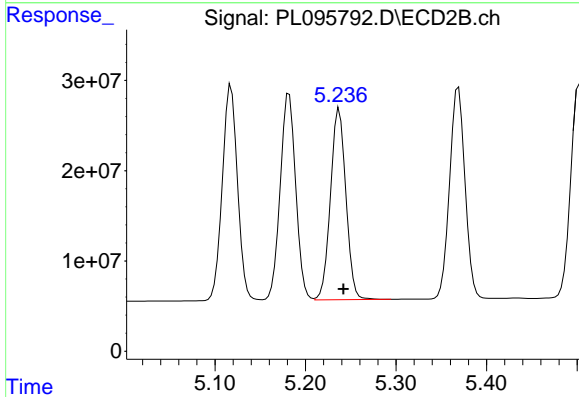
R.T.: 4.865 min  
 Delta R.T.: -0.004 min  
 Response: 260573438  
 Conc: 52.78 ng/ml



#9 Endosulfan I

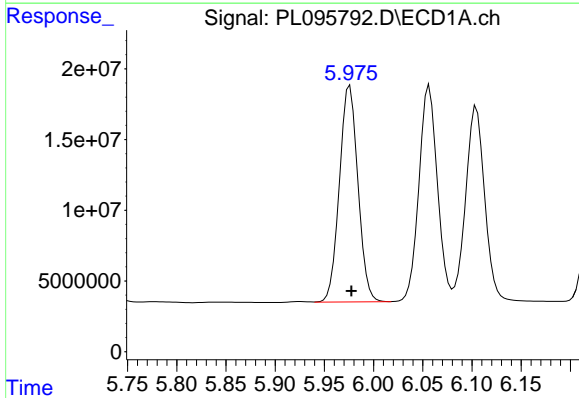
R.T.: 6.105 min  
 Delta R.T.: -0.002 min  
 Response: 183608313  
 Conc: 50.10 ng/ml

Instrument :  
 ECD\_L  
 ClientSampleId :



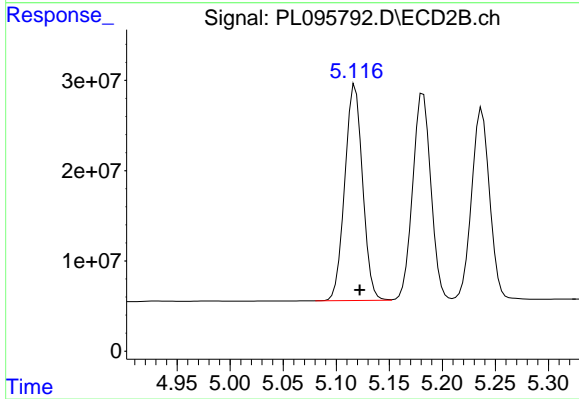
#9 Endosulfan I

R.T.: 5.237 min  
 Delta R.T.: -0.005 min  
 Response: 251054941  
 Conc: 52.69 ng/ml



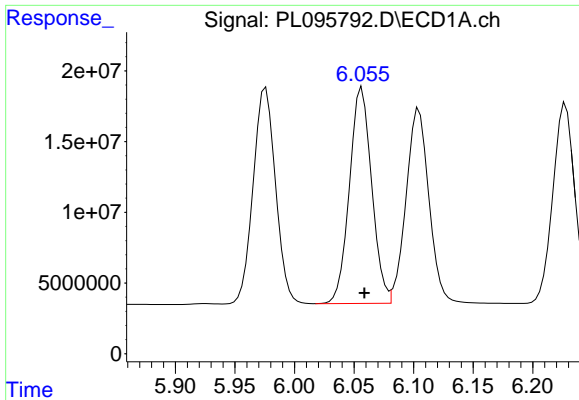
#10 gamma-Chlordane

R.T.: 5.976 min  
 Delta R.T.: -0.002 min  
 Response: 200277979  
 Conc: 51.46 ng/ml



#10 gamma-Chlordane

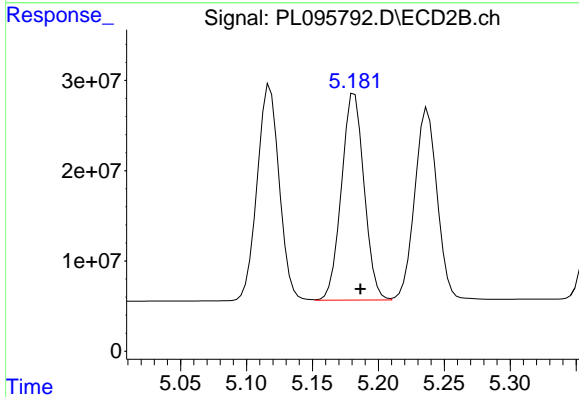
R.T.: 5.118 min  
 Delta R.T.: -0.004 min  
 Response: 278398145  
 Conc: 53.00 ng/ml



#11 alpha-Chlordane

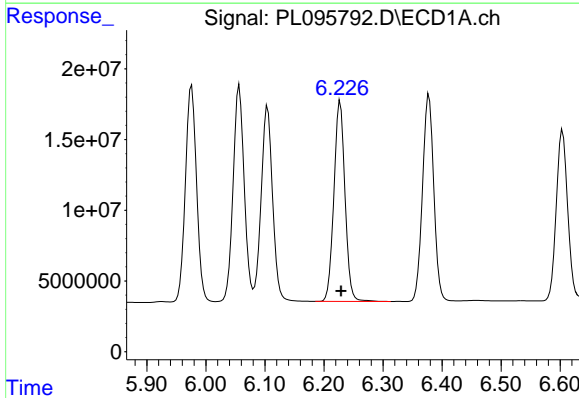
R.T.: 6.057 min  
 Delta R.T.: -0.002 min  
 Response: 198846044  
 Conc: 50.36 ng/ml

Instrument :  
 ECD\_L  
 ClientSampleId :



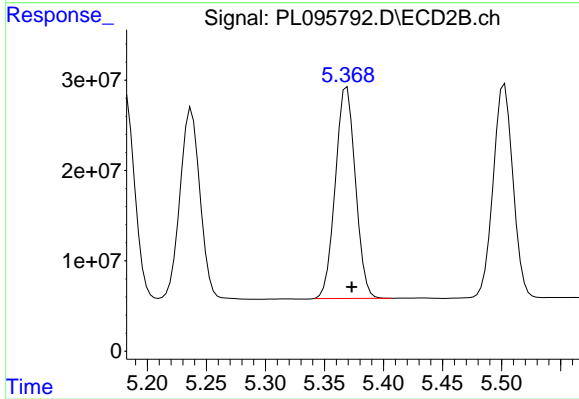
#11 alpha-Chlordane

R.T.: 5.182 min  
 Delta R.T.: -0.004 min  
 Response: 273463665  
 Conc: 52.56 ng/ml



#12 4,4'-DDE

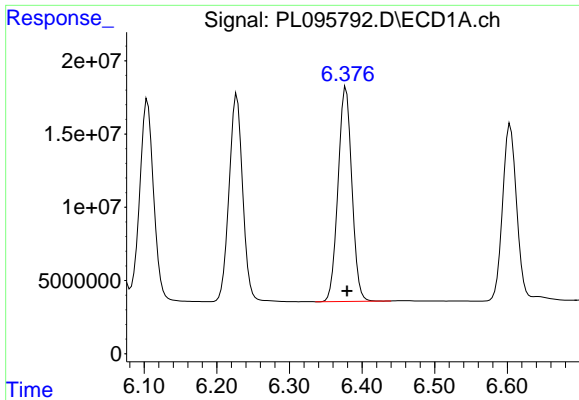
R.T.: 6.228 min  
 Delta R.T.: -0.001 min  
 Response: 184824204  
 Conc: 50.39 ng/ml



#12 4,4'-DDE

R.T.: 5.369 min  
 Delta R.T.: -0.004 min  
 Response: 276731696  
 Conc: 51.61 ng/ml

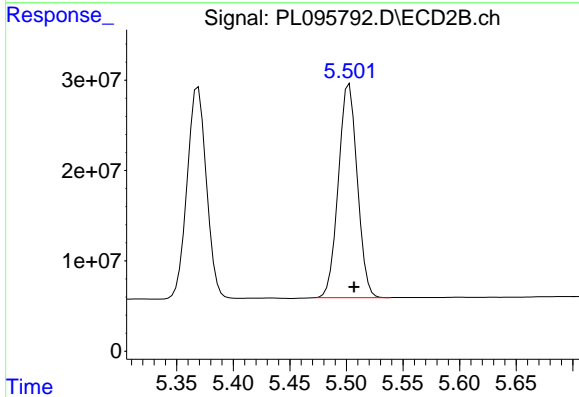




#13 Dieldrin

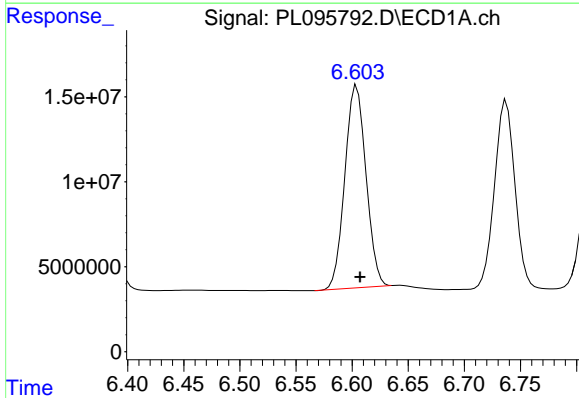
R.T.: 6.378 min  
 Delta R.T.: -0.002 min  
 Response: 193175374  
 Conc: 50.06 ng/ml

Instrument :  
 ECD\_L  
 ClientSampleId :



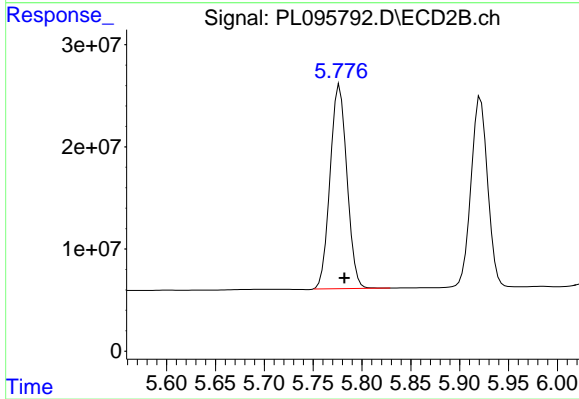
#13 Dieldrin

R.T.: 5.503 min  
 Delta R.T.: -0.004 min  
 Response: 274889937  
 Conc: 51.86 ng/ml



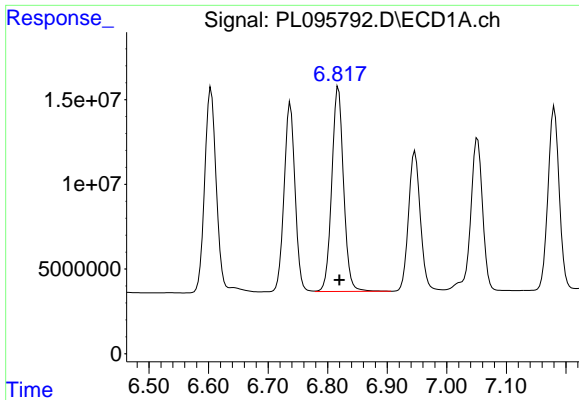
#14 Endrin

R.T.: 6.604 min  
 Delta R.T.: -0.003 min  
 Response: 156548422  
 Conc: 48.52 ng/ml



#14 Endrin

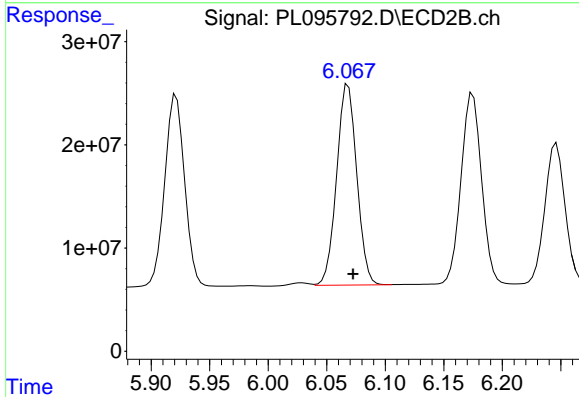
R.T.: 5.777 min  
 Delta R.T.: -0.005 min  
 Response: 239740002  
 Conc: 49.17 ng/ml



#15 Endosulfan II

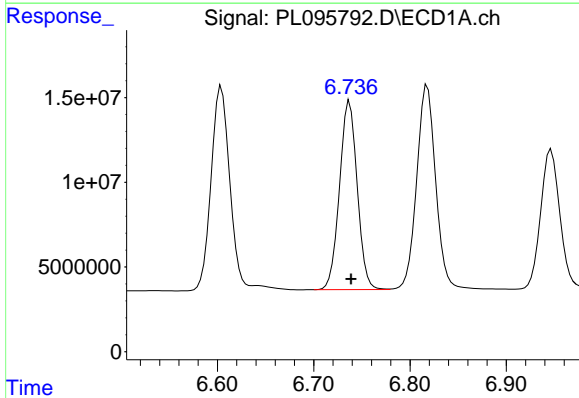
R.T.: 6.818 min  
Delta R.T.: -0.002 min  
Response: 166059876  
Conc: 48.19 ng/ml

Instrument :  
ECD\_L  
ClientSampleId :



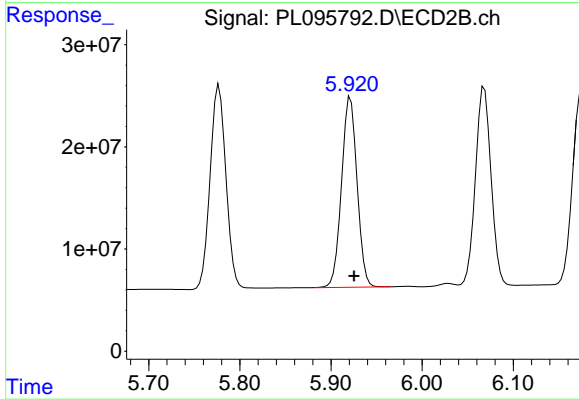
#15 Endosulfan II

R.T.: 6.068 min  
Delta R.T.: -0.004 min  
Response: 232826050  
Conc: 49.00 ng/ml



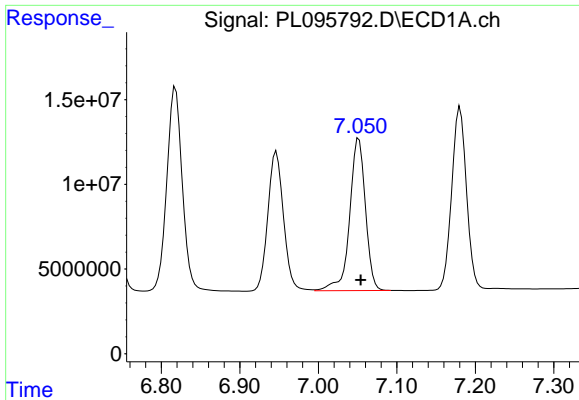
#16 4,4'-DDD

R.T.: 6.737 min  
Delta R.T.: -0.002 min  
Response: 141761087  
Conc: 48.37 ng/ml



#16 4,4'-DDD

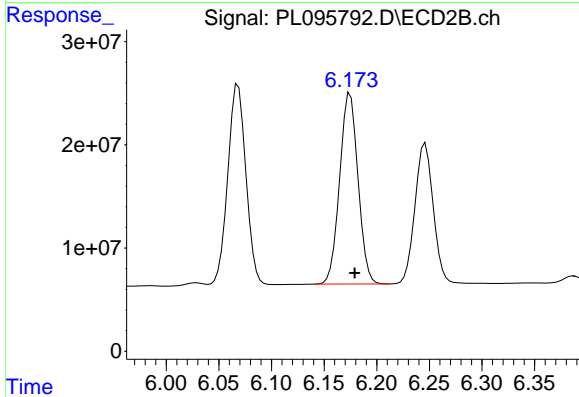
R.T.: 5.921 min  
Delta R.T.: -0.004 min  
Response: 220461868  
Conc: 50.28 ng/ml



#17 4,4'-DDT

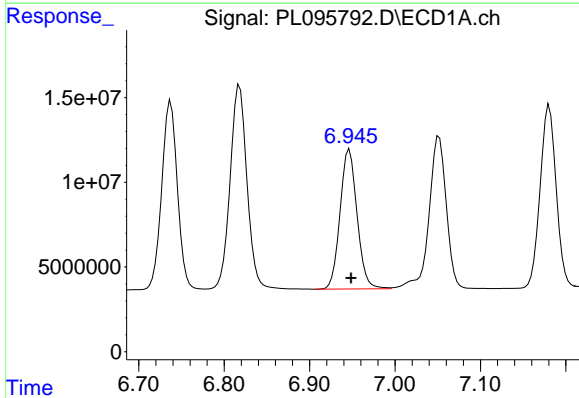
R.T.: 7.052 min  
 Delta R.T.: -0.002 min  
 Response: 125701499  
 Conc: 46.47 ng/ml

Instrument :  
 ECD\_L  
 ClientSampleId :



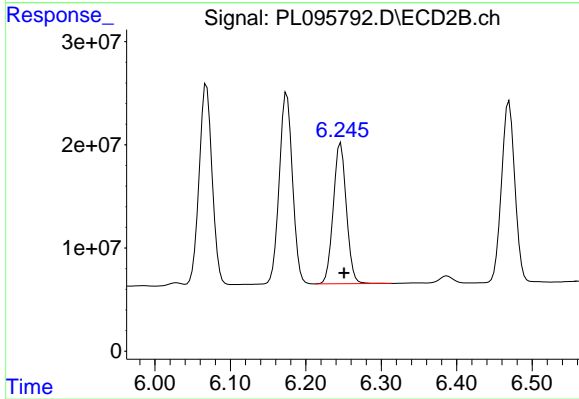
#17 4,4'-DDT

R.T.: 6.175 min  
 Delta R.T.: -0.004 min  
 Response: 225212013  
 Conc: 47.09 ng/ml



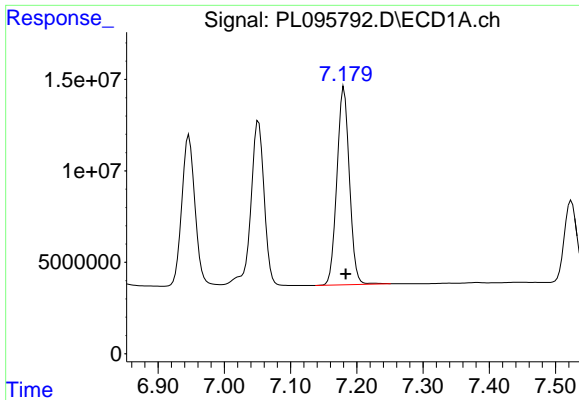
#18 Endrin aldehyde

R.T.: 6.947 min  
 Delta R.T.: -0.002 min  
 Response: 114072138  
 Conc: 47.18 ng/ml



#18 Endrin aldehyde

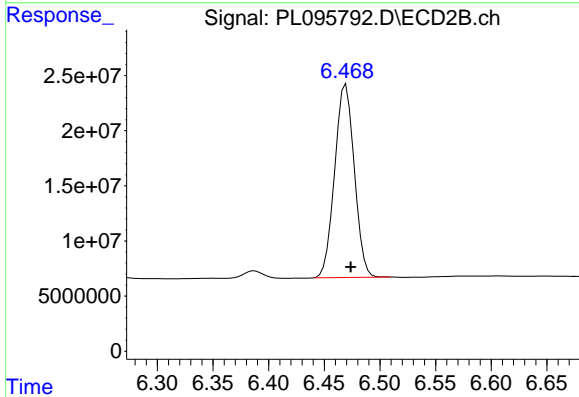
R.T.: 6.246 min  
 Delta R.T.: -0.004 min  
 Response: 164585482  
 Conc: 47.65 ng/ml



#19 Endosulfan Sulfate

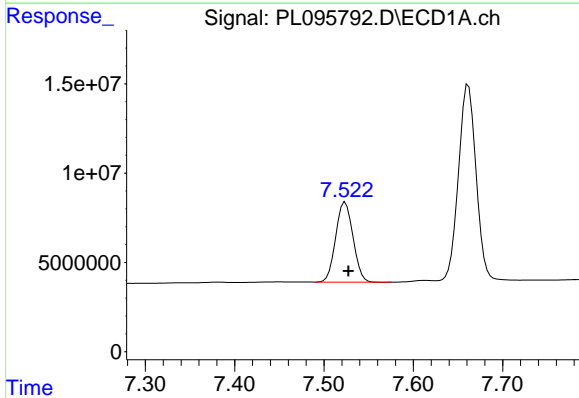
R.T.: 7.181 min  
 Delta R.T.: -0.003 min  
 Response: 141544511  
 Conc: 47.39 ng/ml

Instrument :  
 ECD\_L  
 ClientSampleId :



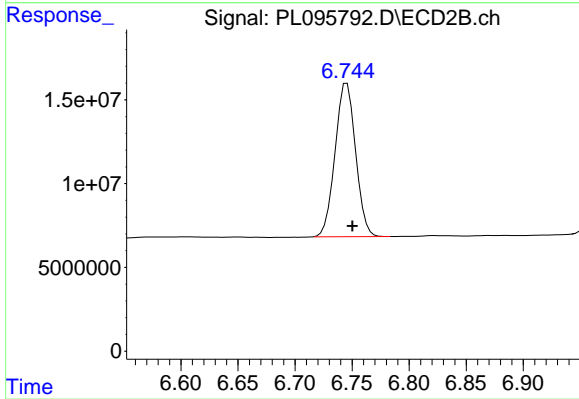
#19 Endosulfan Sulfate

R.T.: 6.469 min  
 Delta R.T.: -0.004 min  
 Response: 214877210  
 Conc: 47.81 ng/ml



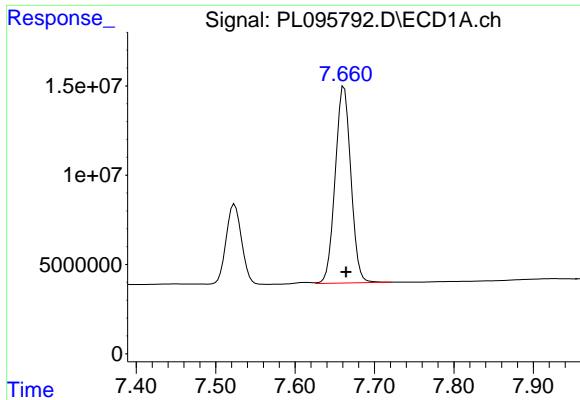
#20 Methoxychlor

R.T.: 7.524 min  
 Delta R.T.: -0.004 min  
 Response: 60354302  
 Conc: 47.32 ng/ml



#20 Methoxychlor

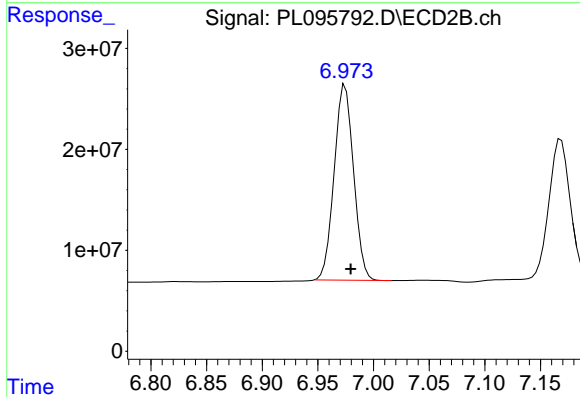
R.T.: 6.745 min  
 Delta R.T.: -0.005 min  
 Response: 114647852  
 Conc: 43.82 ng/ml



#21 Endrin ketone

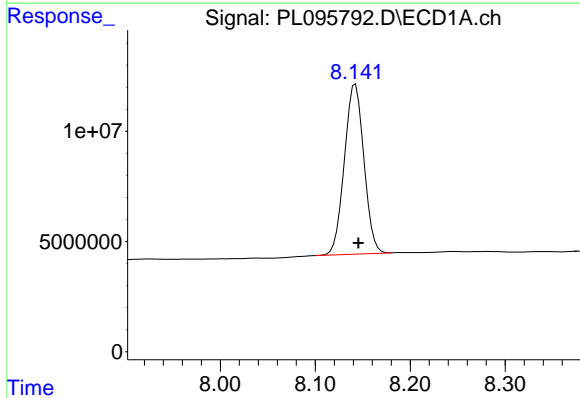
R.T.: 7.662 min  
 Delta R.T.: -0.003 min  
 Response: 151192624  
 Conc: 47.74 ng/ml

Instrument :  
 ECD\_L  
 ClientSampleId :



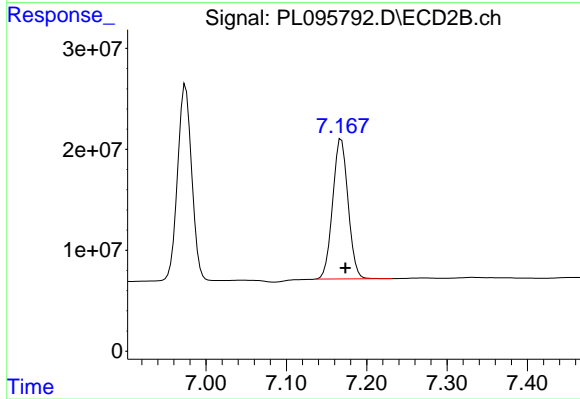
#21 Endrin ketone

R.T.: 6.975 min  
 Delta R.T.: -0.005 min  
 Response: 234861908  
 Conc: 45.39 ng/ml



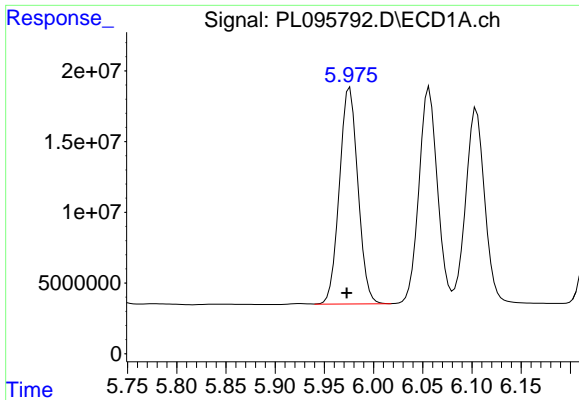
#22 Mirex

R.T.: 8.142 min  
 Delta R.T.: -0.003 min  
 Response: 109884177  
 Conc: 47.49 ng/ml



#22 Mirex

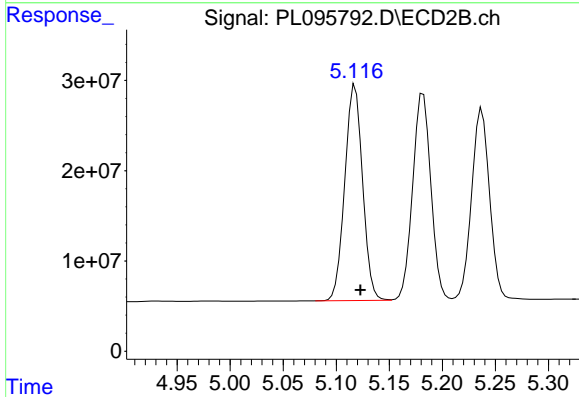
R.T.: 7.168 min  
 Delta R.T.: -0.005 min  
 Response: 185062258  
 Conc: 45.58 ng/ml



#25 Chlordane-3

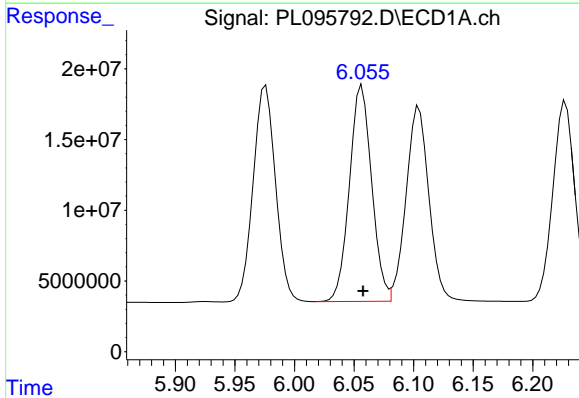
R.T.: 5.976 min  
 Delta R.T.: 0.003 min  
 Response: 200277979  
 Conc: 271.00 ng/ml

Instrument :  
 ECD\_L  
 ClientSampleId :



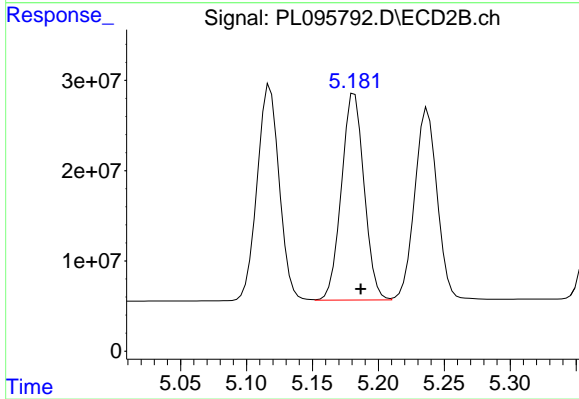
#25 Chlordane-3

R.T.: 5.118 min  
 Delta R.T.: -0.005 min  
 Response: 278398145  
 Conc: 422.52 ng/ml



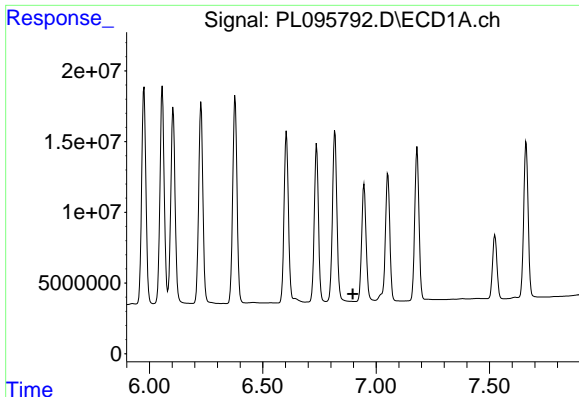
#26 Chlordane-4

R.T.: 6.057 min  
 Delta R.T.: 0.000 min  
 Response: 198846044  
 Conc: 221.24 ng/ml



#26 Chlordane-4

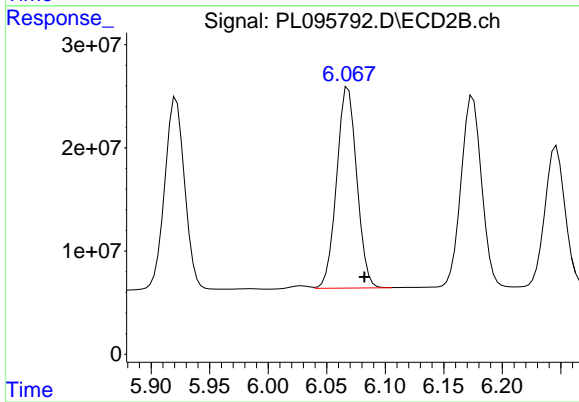
R.T.: 5.182 min  
 Delta R.T.: -0.005 min  
 Response: 273463665  
 Conc: 479.00 ng/ml



#27 Chlordane-5

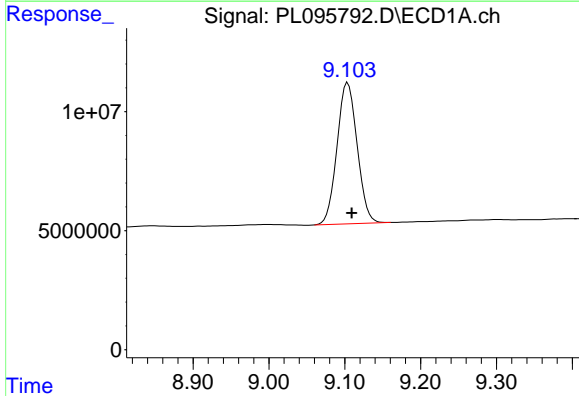
R.T.: 0.000 min  
 Exp R.T.: 6.897 min  
 Response: 0  
 Conc: N.D.

Instrument :  
 ECD\_L  
 ClientSampleId :



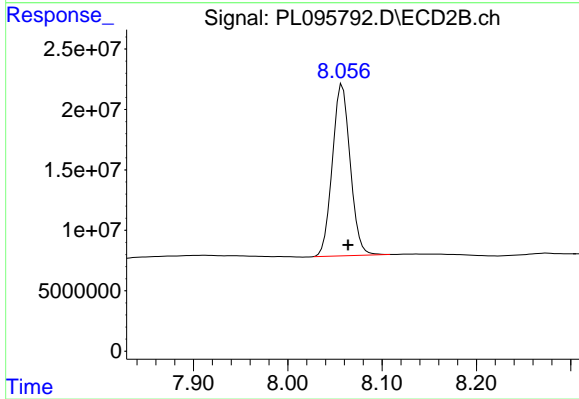
#27 Chlordane-5

R.T.: 6.068 min  
 Delta R.T.: -0.014 min  
 Response: 232826050  
 Conc: 913.28 ng/ml



#28 Decachlorobiphenyl

R.T.: 9.104 min  
 Delta R.T.: -0.005 min  
 Response: 109466403  
 Conc: 46.46 ng/ml



#28 Decachlorobiphenyl

R.T.: 8.058 min  
 Delta R.T.: -0.006 min  
 Response: 187087909  
 Conc: 42.77 ng/ml