

Data Path : Z:\pestpcbsrv\HPCHEM1\ECD_L\Data\PL052820\
 Data File : PL058951.D
 Signal(s) : Signal #1: ECD1A.ch Signal #2: ECD2B.ch
 Acq On : 28 May 2020 15:09
 Operator : AJ\MA
 Sample : L2773-14
 Misc :
 ALS Vial : 18 Sample Multiplier: 1

Instrument :
 ECD_L
 ClientSampleId :
 NM25-COMP-2020-0-6

Integration File signal 1: autoint1.e
 Integration File signal 2: autoint2.e
 Quant Time: May 28 18:15:36 2020
 Quant Method : Z:\pestpcbsrv\HPCHEM1\ECD_L\methods\PL052020.M
 Quant Title : GC Extractables
 QLast Update : Wed May 20 11:27:53 2020
 Response via : Initial Calibration
 Integrator: ChemStation

Volume Inj. : 1 µl
 Signal #1 Phase : ZB-MR2 Signal #2 Phase: ZB-MR1
 Signal #1 Info : 30M x 0.32mm x0.2 Signal #2 Info : 30M x 0.32mm x0.5µm

Compound	RT#1	RT#2	Resp#1	Resp#2	ng/ml	ng/ml

System Monitoring Compounds						
1) SA Tetrachlo...	3.528	4.075	23162876	32890212	12.632	12.144
28) SA Decachlor...	8.307	9.186	18131478	24520694	10.731	9.302
Target Compounds						
2) A alpha-BHC	3.971	4.468	1905287	45749	0.701	0.011 #
4) MA Heptachlor	4.565	5.270	1082044	974550	0.481	0.254 #
5) MB Aldrin	0.000	5.596f	0	365178	N.D.	0.107 #
7) B delta-BHC	0.000	5.149	0	394181	N.D.	0.108 #
8) B Heptachlo...	0.000	5.953	0	1211791	N.D.	0.367 #
10) B gamma-Chl...	5.510f	6.200	10121457	5692115	5.521	1.719 #
11) B alpha-Chl...	5.545	6.276	2864188	18458852	1.565	5.683 #
12) B 4,4'-DDE	5.708	6.427	2522459	5557928	1.536	1.947 #
13) MA Dieldrin	5.835	6.563f	2466734	2895721	1.405	0.956 #
14) MA Endrin	6.101	6.789	1583874	696302	1.011	0.279 #
15) B Endosulfa...	0.000	7.009	0	1945102	N.D.	0.694 #
16) A 4,4'-DDD	0.000	6.925	0	3794783	N.D.	1.591 #
17) MA 4,4'-DDT	6.465	7.218	4016235	2250720	2.761	0.946 #
18) B Endrin al...	0.000	7.144	0	498520	N.D.	0.211 #
19) B Endosulfa...	6.753	0.000	601992	0	0.369	N.D. #
20) A Methoxychlor	6.997f	0.000	1179902	0	1.383	N.D. #
22) Mirex	0.000	8.307f	0	362102	N.D.	0.165 #
23) Chlordane-1	4.409	5.078	2368369	3730429	45.266	38.894
24) Chlordane-2	4.915	5.548	1293879	2195039	22.237	21.515
25) Chlordane-3	5.510f	6.200	10121457	5692115	67.487	14.953 #
26) Chlordane-4	5.545	6.276	2864188	18458852	23.317	40.537 #
27) Chlordane-5	0.000	7.081	0	1106435	N.D.	13.966 #

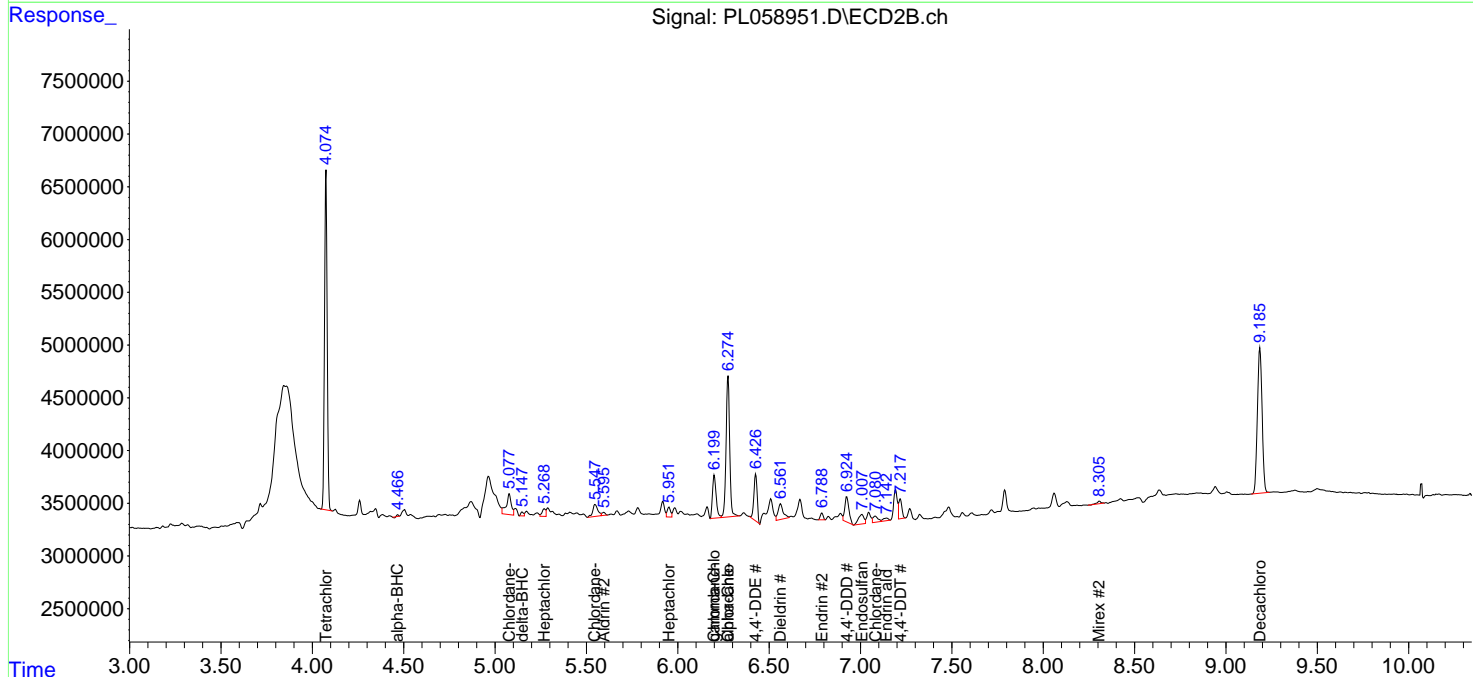
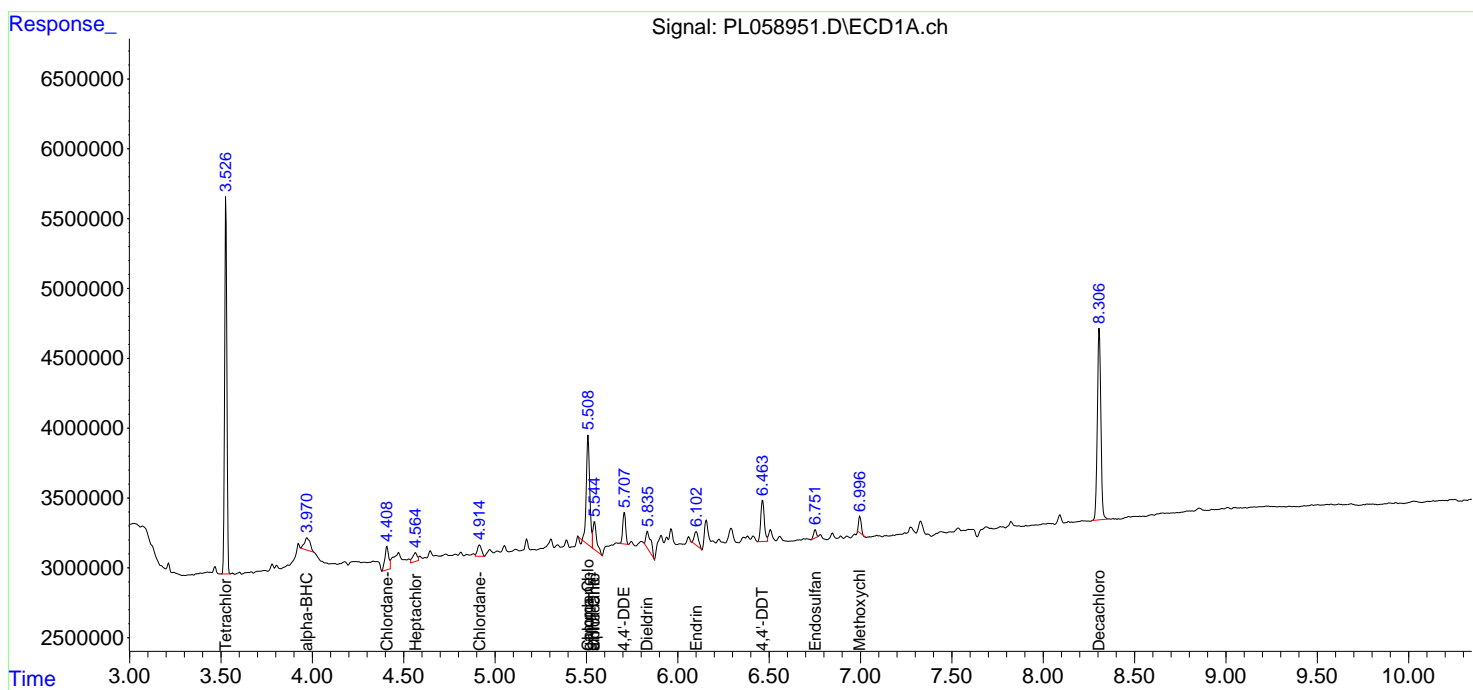
(f)=RT Delta > 1/2 Window (#)=Amounts differ by > 25% (m)=manual int.

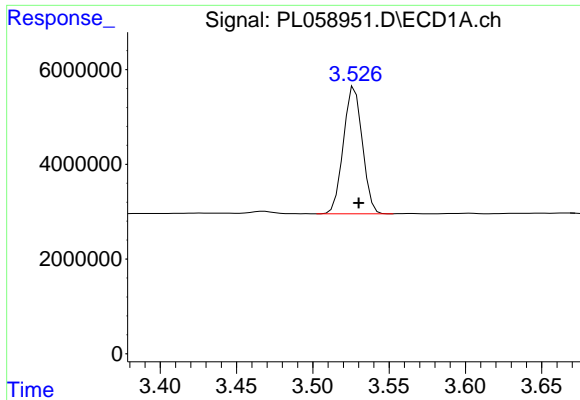
Data Path : Z:\pestpcbsrv\HPCHEM1\ECD_L\Data\PL052820\
 Data File : PL058951.D
 Signal(s) : Signal #1: ECD1A.ch Signal #2: ECD2B.ch
 Acq On : 28 May 2020 15:09
 Operator : AJ\MA
 Sample : L2773-14
 Misc :
 ALS Vial : 18 Sample Multiplier: 1

Instrument :
 ECD_L
 Client Sampled :
 NM25-COMP-2020-0-6

Integration File signal 1: autoint1.e
 Integration File signal 2: autoint2.e
 Quant Time: May 28 18:15:36 2020
 Quant Method : Z:\pestpcbsrv\HPCHEM1\ECD_L\methods\PL052020.M
 Quant Title : GC Extractables
 QLast Update : Wed May 20 11:27:53 2020
 Response via : Initial Calibration
 Integrator: ChemStation

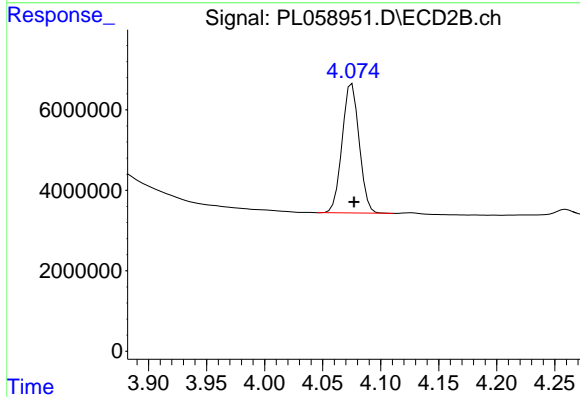
Volume Inj. : 1 µl
 Signal #1 Phase : ZB-MR2 Signal #2 Phase: ZB-MR1
 Signal #1 Info : 30M x 0.32mm x0.2 Signal #2 Info : 30M x 0.32mm x0.5µm



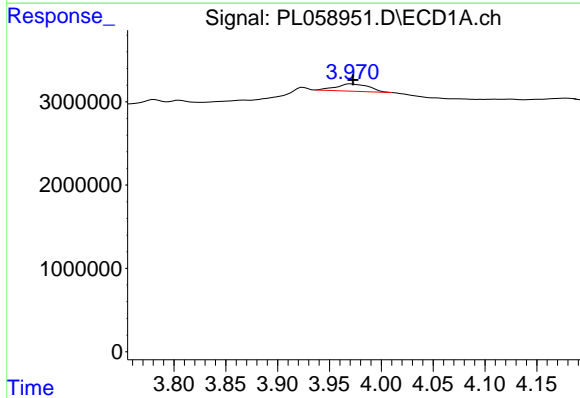


#1 Tetrachloro-m-xylene
 R.T.: 3.528 min
 Delta R.T.: -0.002 min
 Response: 23162876
 Conc: 12.63 ng/ml

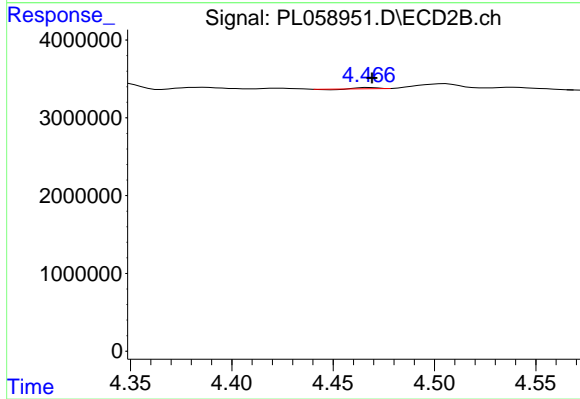
Instrument :
 ECD_L
 ClientSampleId :
 NM25-COMP-2020-0-6



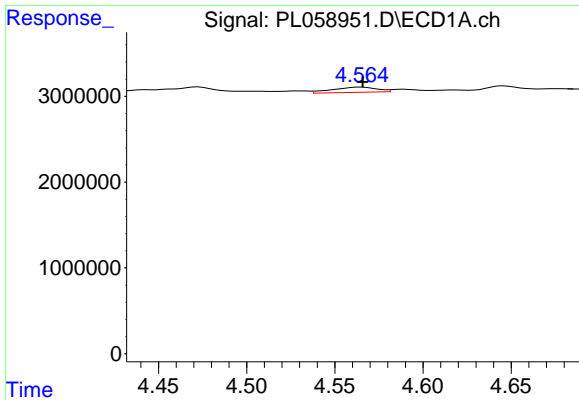
#1 Tetrachloro-m-xylene
 R.T.: 4.075 min
 Delta R.T.: -0.002 min
 Response: 32890212
 Conc: 12.14 ng/ml



#2 alpha-BHC
 R.T.: 3.971 min
 Delta R.T.: -0.002 min
 Response: 1905287
 Conc: 0.70 ng/ml

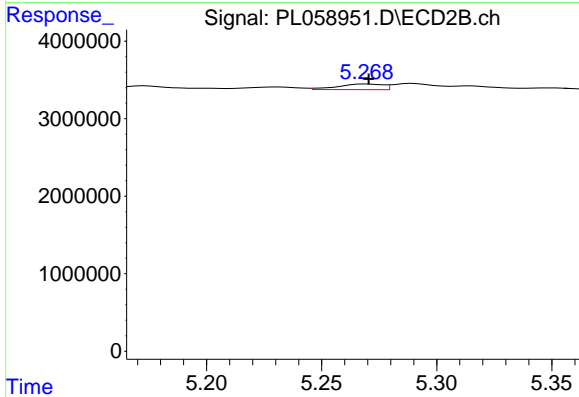


#2 alpha-BHC
 R.T.: 4.468 min
 Delta R.T.: -0.001 min
 Response: 45749
 Conc: 0.01 ng/ml

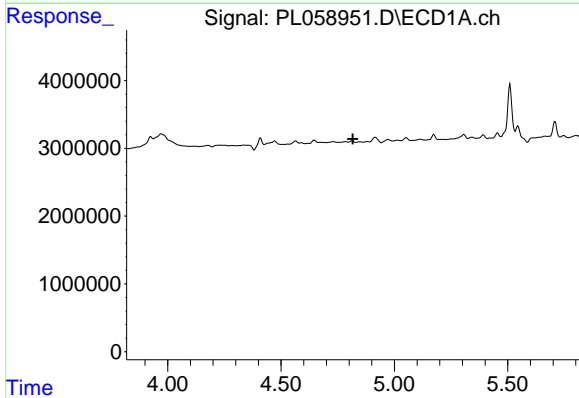


#4 Heptachlor
 R.T.: 4.565 min
 Delta R.T.: 0.000 min
 Response: 1082044
 Conc: 0.48 ng/ml

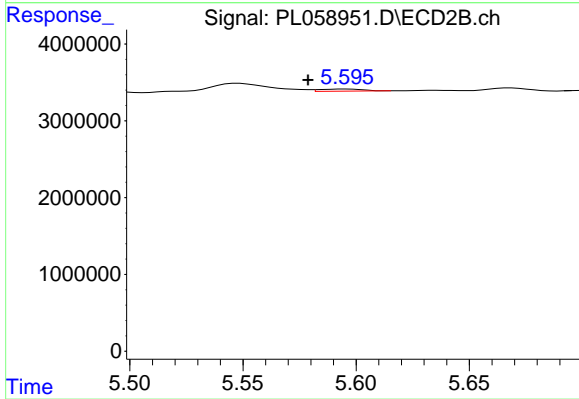
Instrument :
 ECD_L
 ClientSampleId :
 NM25-COMP-2020-0-6



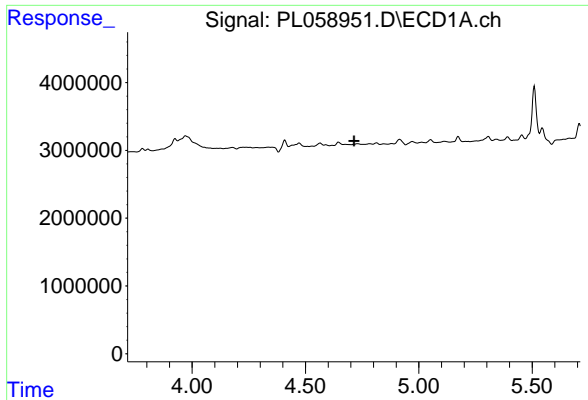
#4 Heptachlor
 R.T.: 5.270 min
 Delta R.T.: 0.000 min
 Response: 974550
 Conc: 0.25 ng/ml



#5 Aldrin
 R.T.: 0.000 min
 Exp R.T. : 4.816 min
 Response: 0
 Conc: N.D.

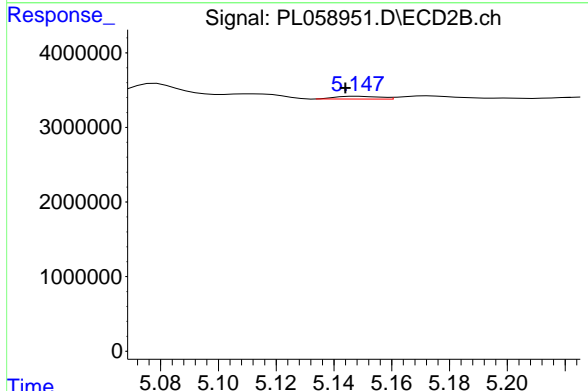


#5 Aldrin
 R.T.: 5.596 min
 Delta R.T.: 0.017 min
 Response: 365178
 Conc: 0.11 ng/ml

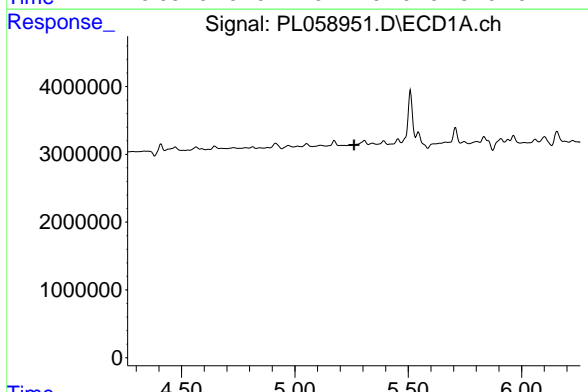


#7 delta-BHC
 R.T.: 0.000 min
 Exp R.T. : 4.715 min
 Response: 0
 Conc: N.D.

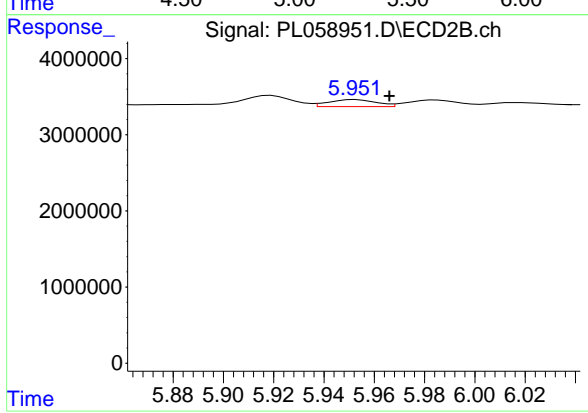
Instrument :
 ECD_L
 ClientSampleId :
 NM25-COMP-2020-0-6



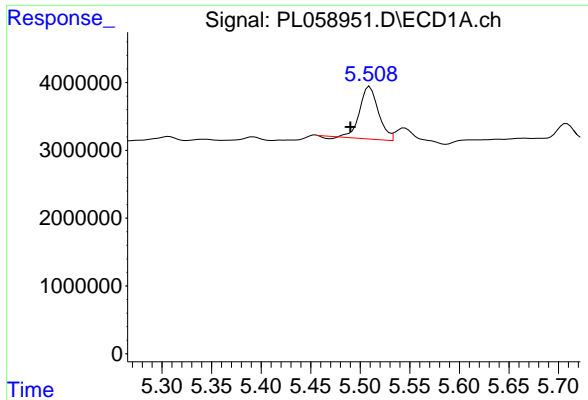
#7 delta-BHC
 R.T.: 5.149 min
 Delta R.T.: 0.005 min
 Response: 394181
 Conc: 0.11 ng/ml



#8 Heptachlor epoxide
 R.T.: 0.000 min
 Exp R.T. : 5.261 min
 Response: 0
 Conc: N.D.

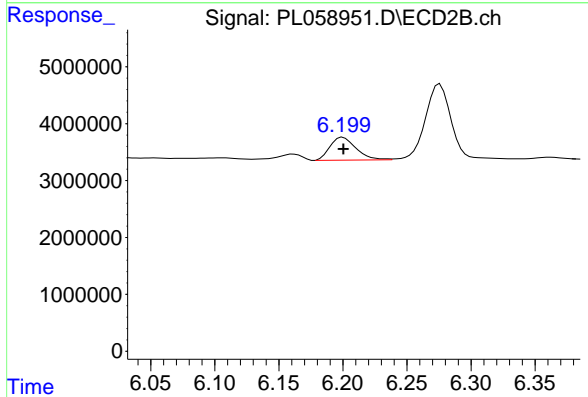


#8 Heptachlor epoxide
 R.T.: 5.953 min
 Delta R.T.: -0.013 min
 Response: 1211791
 Conc: 0.37 ng/ml

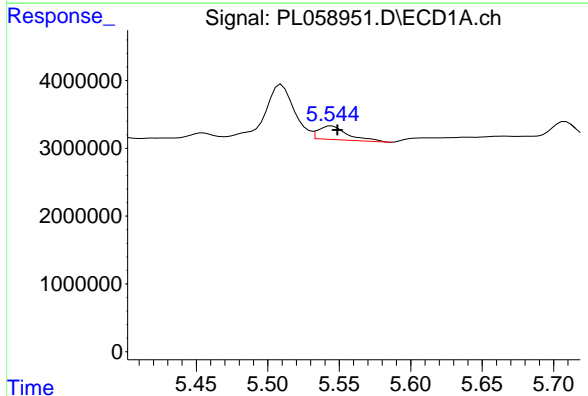


#10 gamma-Chlordane
 R.T.: 5.510 min
 Delta R.T.: 0.019 min
 Response: 10121457
 Conc: 5.52 ng/ml

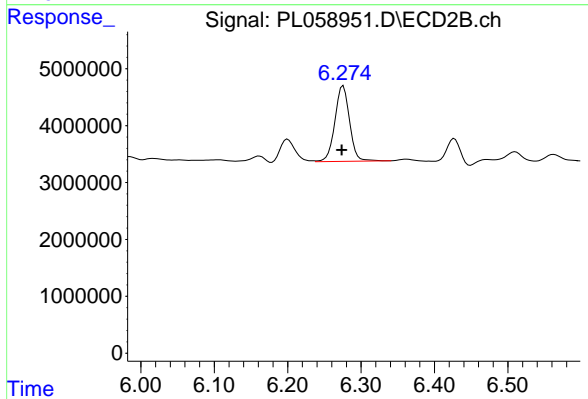
Instrument :
 ECD_L
 ClientSampleId :
 NM25-COMP-2020-0-6



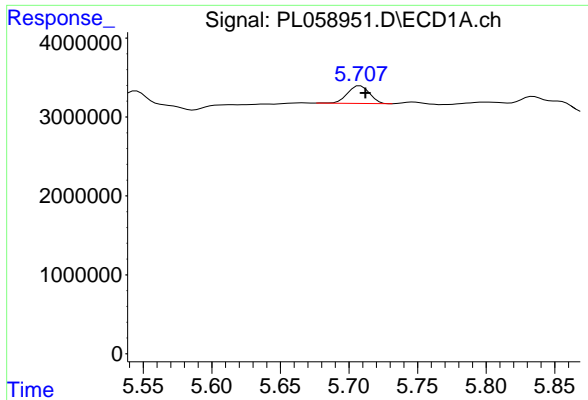
#10 gamma-Chlordane
 R.T.: 6.200 min
 Delta R.T.: 0.000 min
 Response: 5692115
 Conc: 1.72 ng/ml



#11 alpha-Chlordane
 R.T.: 5.545 min
 Delta R.T.: -0.004 min
 Response: 2864188
 Conc: 1.57 ng/ml

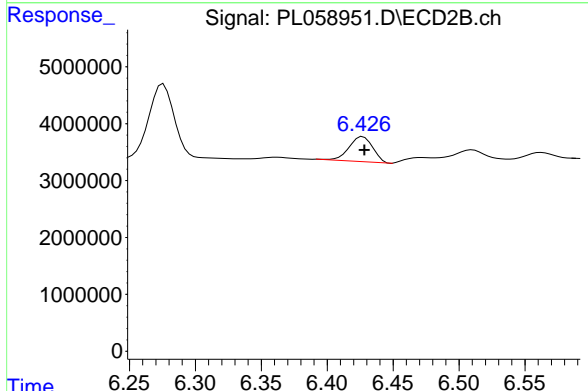


#11 alpha-Chlordane
 R.T.: 6.276 min
 Delta R.T.: 0.002 min
 Response: 18458852
 Conc: 5.68 ng/ml

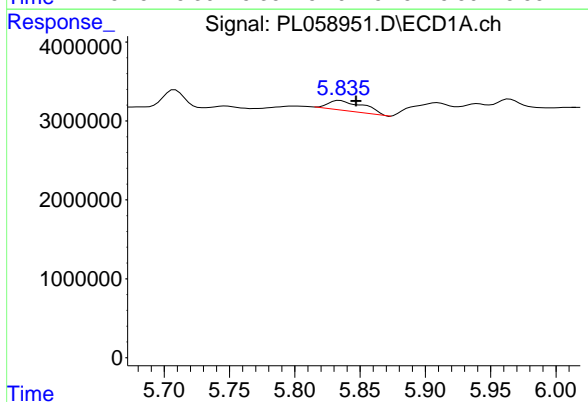


#12 4,4'-DDE
 R.T.: 5.708 min
 Delta R.T.: -0.004 min
 Response: 2522459
 Conc: 1.54 ng/ml

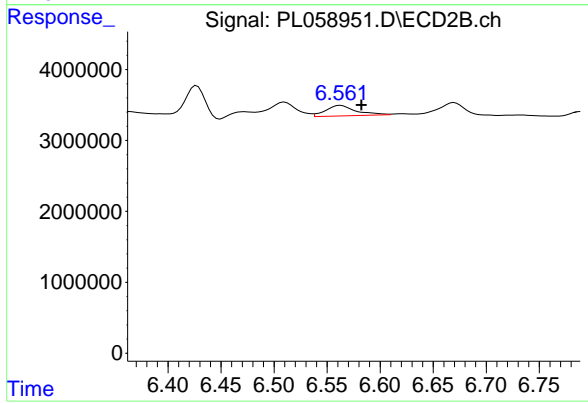
Instrument :
 ECD_L
 ClientSampleId :
 NM25-COMP-2020-0-6



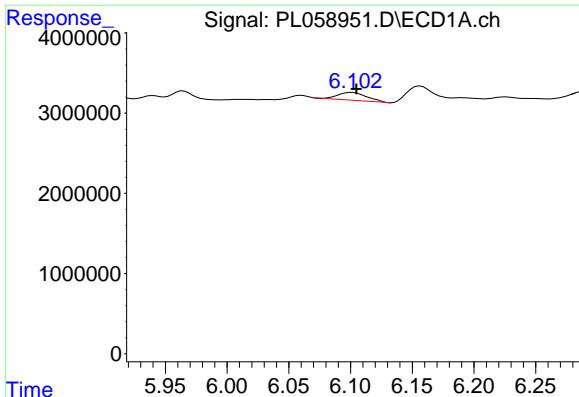
#12 4,4'-DDE
 R.T.: 6.427 min
 Delta R.T.: 0.000 min
 Response: 5557928
 Conc: 1.95 ng/ml



#13 Dieldrin
 R.T.: 5.835 min
 Delta R.T.: -0.012 min
 Response: 2466734
 Conc: 1.41 ng/ml



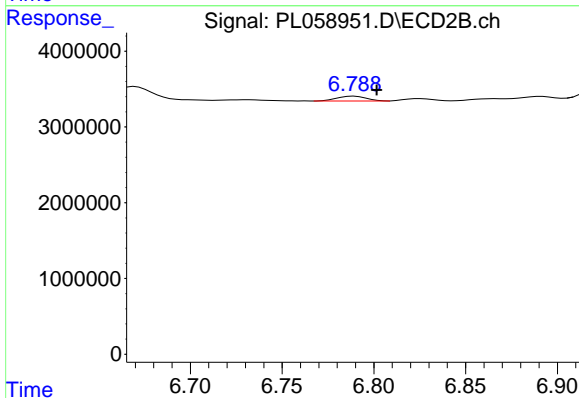
#13 Dieldrin
 R.T.: 6.563 min
 Delta R.T.: -0.020 min
 Response: 2895721
 Conc: 0.96 ng/ml



#14 Endrin

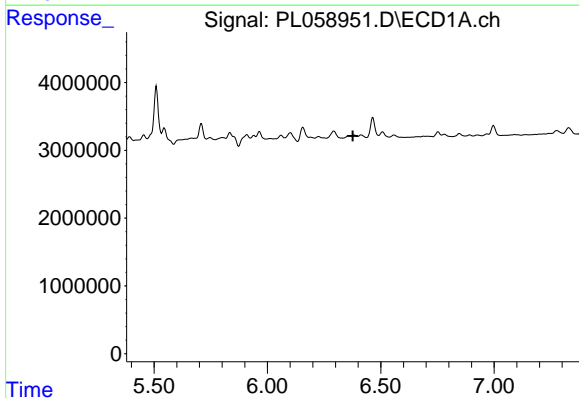
R.T.: 6.101 min
 Delta R.T.: -0.003 min
 Response: 1583874
 Conc: 1.01 ng/ml

Instrument :
 ECD_L
 ClientSampleId :
 NM25-COMP-2020-0-6



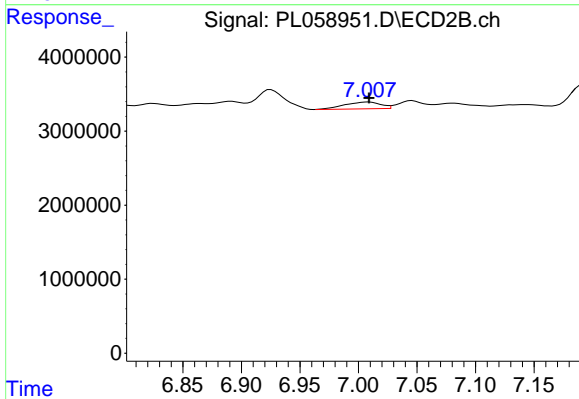
#14 Endrin

R.T.: 6.789 min
 Delta R.T.: -0.012 min
 Response: 696302
 Conc: 0.28 ng/ml



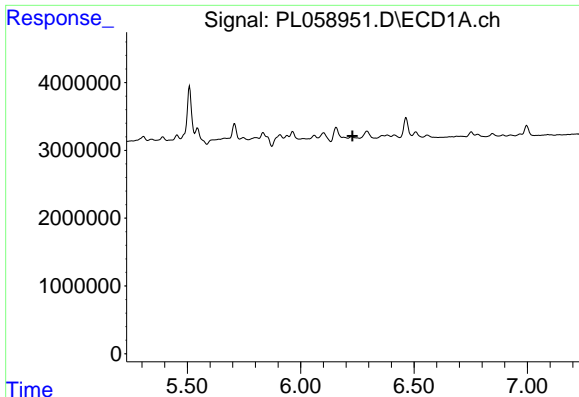
#15 Endosulfan II

R.T.: 0.000 min
 Exp R.T. : 6.377 min
 Response: 0
 Conc: N.D.



#15 Endosulfan II

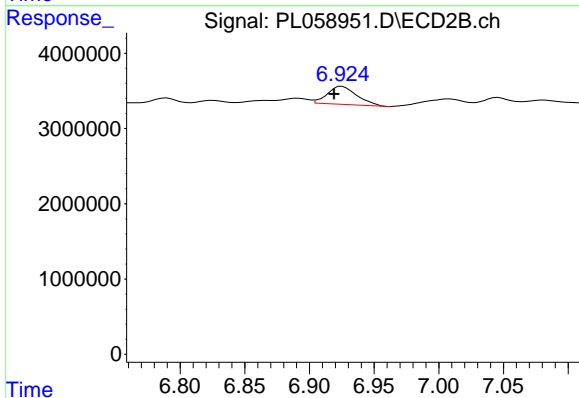
R.T.: 7.009 min
 Delta R.T.: 0.000 min
 Response: 1945102
 Conc: 0.69 ng/ml



#16 4,4'-DDD

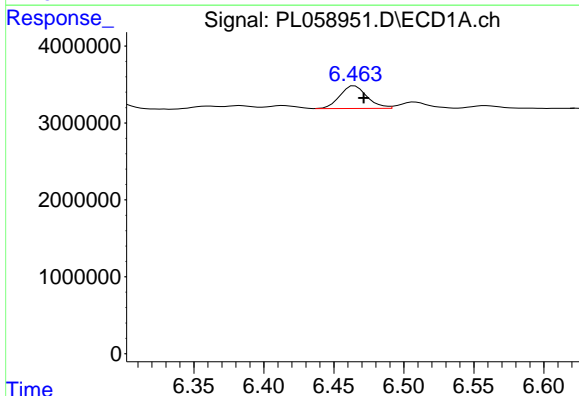
R.T.: 0.000 min
Exp R.T.: 6.229 min
Response: 0
Conc: N.D.

Instrument :
ECD_L
ClientSampleId :
NM25-COMP-2020-0-6



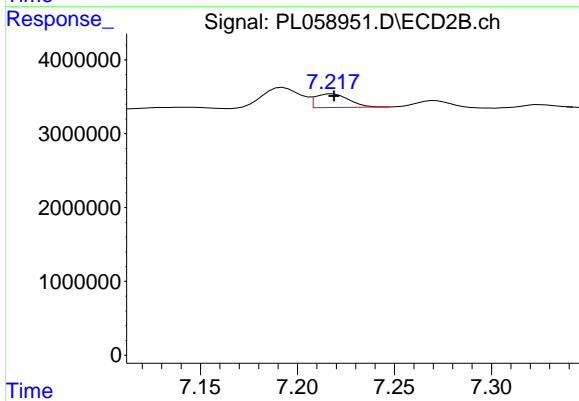
#16 4,4'-DDD

R.T.: 6.925 min
Delta R.T.: 0.006 min
Response: 3794783
Conc: 1.59 ng/ml



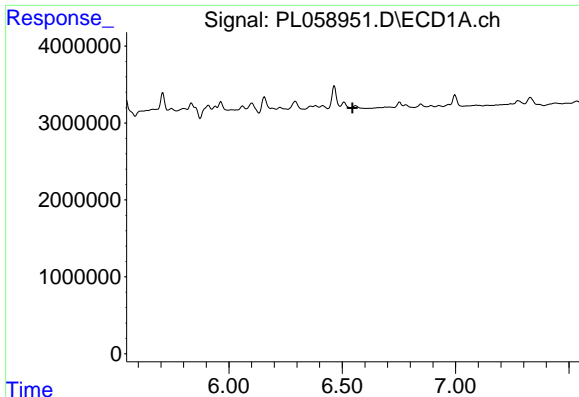
#17 4,4'-DDT

R.T.: 6.465 min
Delta R.T.: -0.006 min
Response: 4016235
Conc: 2.76 ng/ml



#17 4,4'-DDT

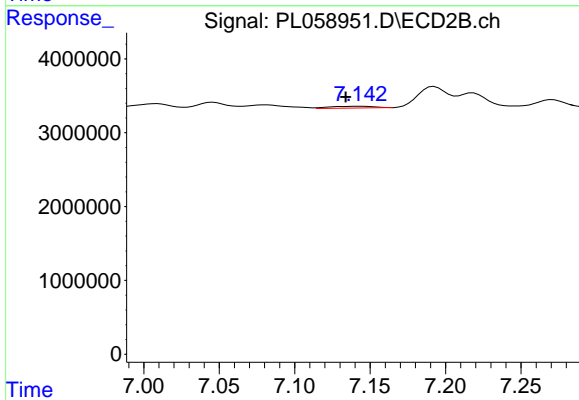
R.T.: 7.218 min
Delta R.T.: 0.000 min
Response: 2250720
Conc: 0.95 ng/ml



#18 Endrin aldehyde

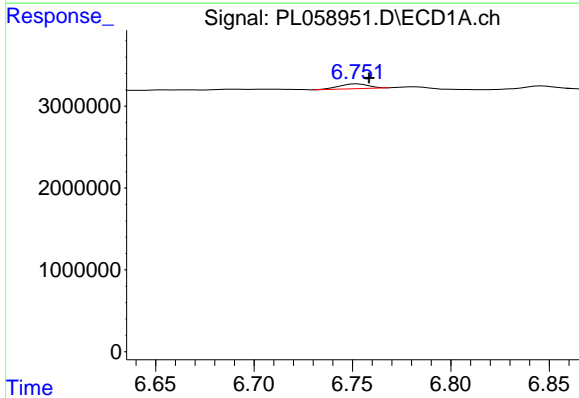
R.T.: 0.000 min
 Exp R.T.: 6.545 min
 Response: 0
 Conc: N.D.

Instrument :
 ECD_L
 ClientSampleId :
 NM25-COMP-2020-0-6



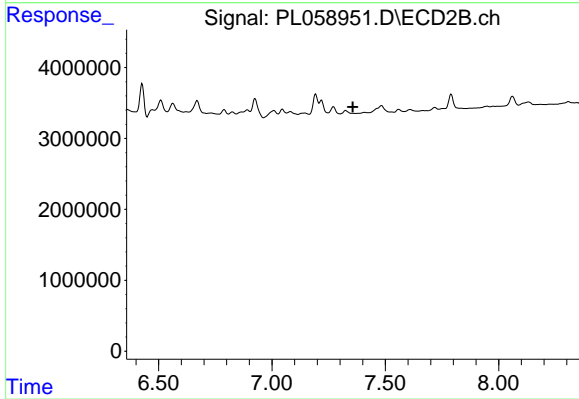
#18 Endrin aldehyde

R.T.: 7.144 min
 Delta R.T.: 0.010 min
 Response: 498520
 Conc: 0.21 ng/ml



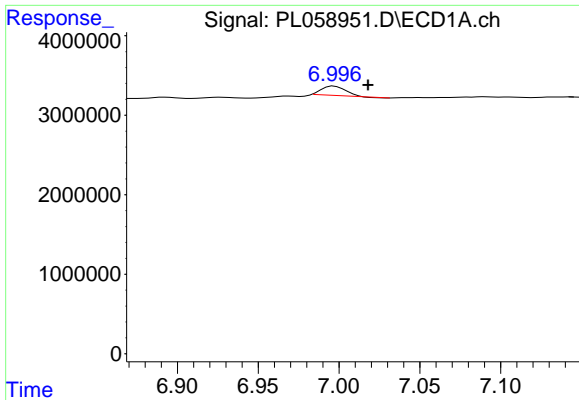
#19 Endosulfan Sulfate

R.T.: 6.753 min
 Delta R.T.: -0.006 min
 Response: 601992
 Conc: 0.37 ng/ml



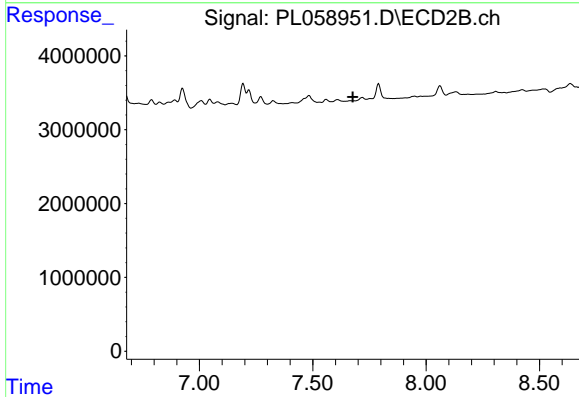
#19 Endosulfan Sulfate

R.T.: 0.000 min
 Exp R.T.: 7.356 min
 Response: 0
 Conc: N.D.

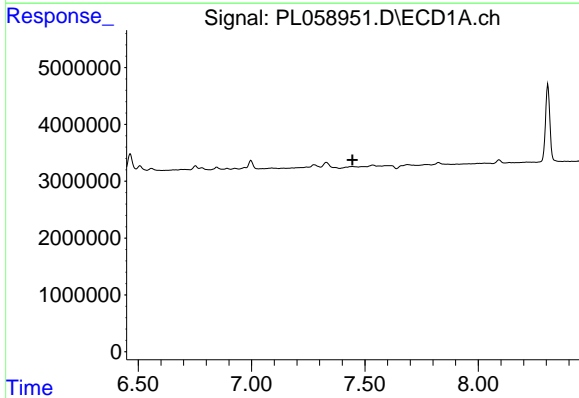


#20 Methoxychlor
 R.T.: 6.997 min
 Delta R.T.: -0.021 min
 Response: 1179902
 Conc: 1.38 ng/ml

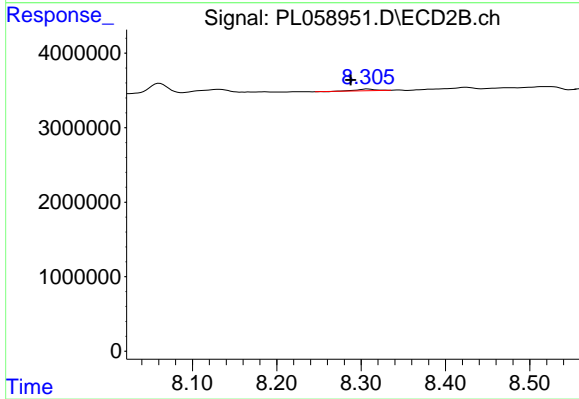
Instrument :
 ECD_L
 ClientSampleId :
 NM25-COMP-2020-0-6



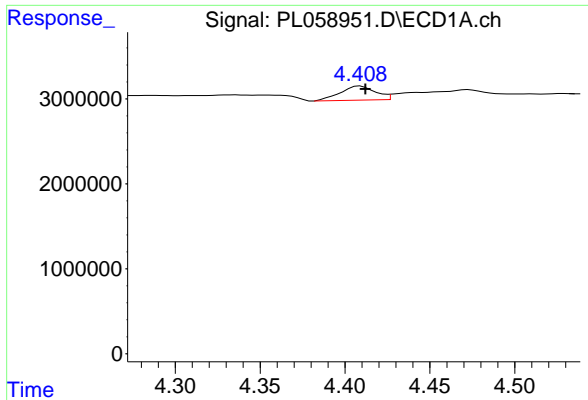
#20 Methoxychlor
 R.T.: 0.000 min
 Exp R.T. : 7.676 min
 Response: 0
 Conc: N.D.



#22 Mirex
 R.T.: 0.000 min
 Exp R.T. : 7.446 min
 Response: 0
 Conc: N.D.

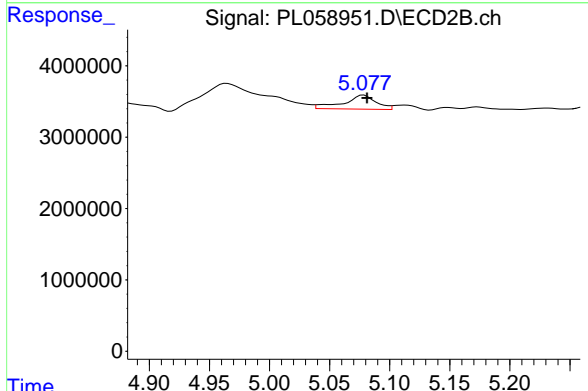


#22 Mirex
 R.T.: 8.307 min
 Delta R.T.: 0.020 min
 Response: 362102
 Conc: 0.17 ng/ml

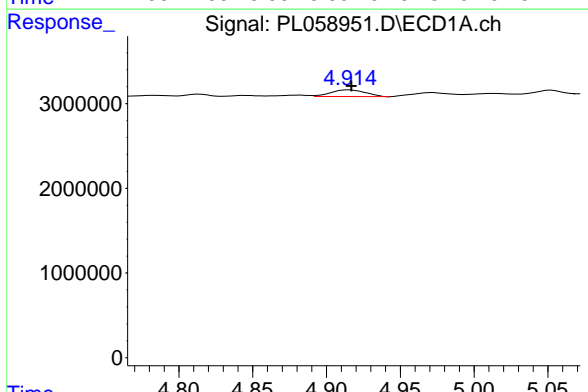


#23 Chlordane-1
 R.T.: 4.409 min
 Delta R.T.: -0.003 min
 Response: 2368369
 Conc: 45.27 ng/ml

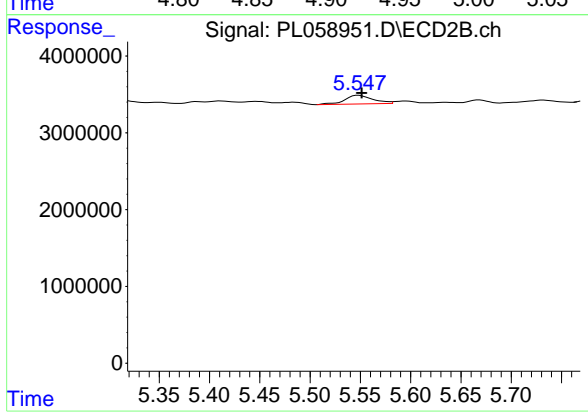
Instrument :
 ECD_L
 ClientSampleId :
 NM25-COMP-2020-0-6



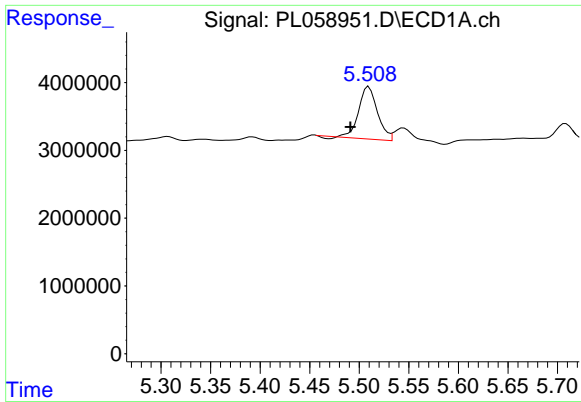
#23 Chlordane-1
 R.T.: 5.078 min
 Delta R.T.: -0.003 min
 Response: 3730429
 Conc: 38.89 ng/ml



#24 Chlordane-2
 R.T.: 4.915 min
 Delta R.T.: -0.001 min
 Response: 1293879
 Conc: 22.24 ng/ml



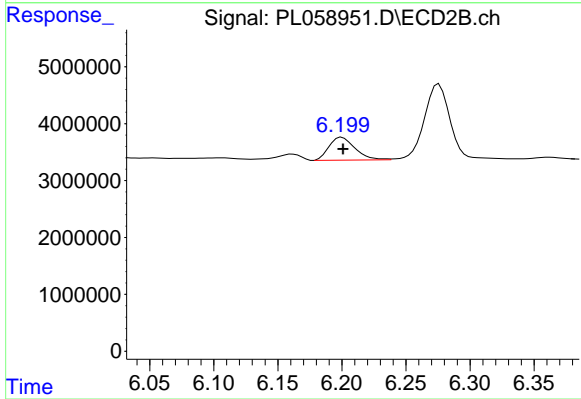
#24 Chlordane-2
 R.T.: 5.548 min
 Delta R.T.: -0.003 min
 Response: 2195039
 Conc: 21.52 ng/ml



#25 Chlordane-3

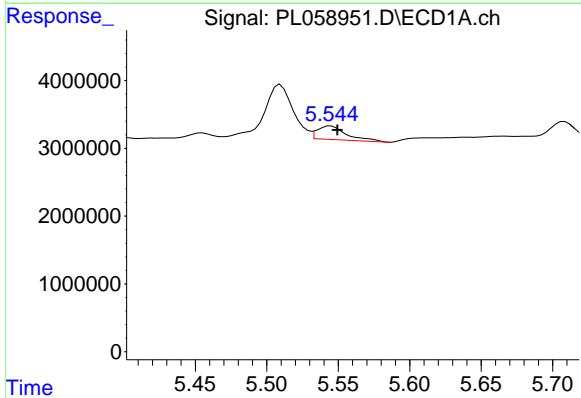
R.T.: 5.510 min
 Delta R.T.: 0.019 min
 Response: 10121457
 Conc: 67.49 ng/ml

Instrument :
 ECD_L
 ClientSampleId :
 NM25-COMP-2020-0-6



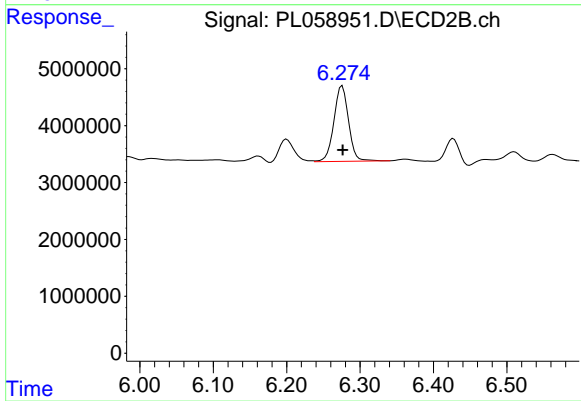
#25 Chlordane-3

R.T.: 6.200 min
 Delta R.T.: 0.000 min
 Response: 5692115
 Conc: 14.95 ng/ml



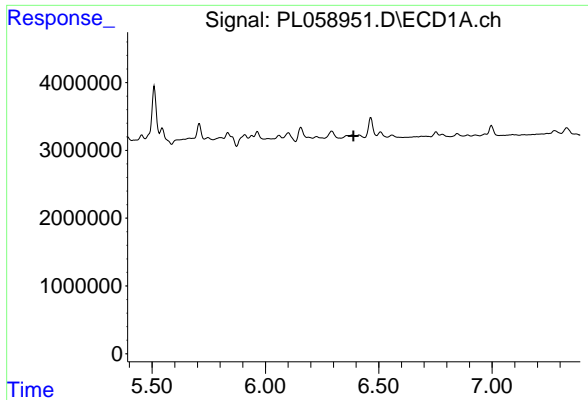
#26 Chlordane-4

R.T.: 5.545 min
 Delta R.T.: -0.005 min
 Response: 2864188
 Conc: 23.32 ng/ml



#26 Chlordane-4

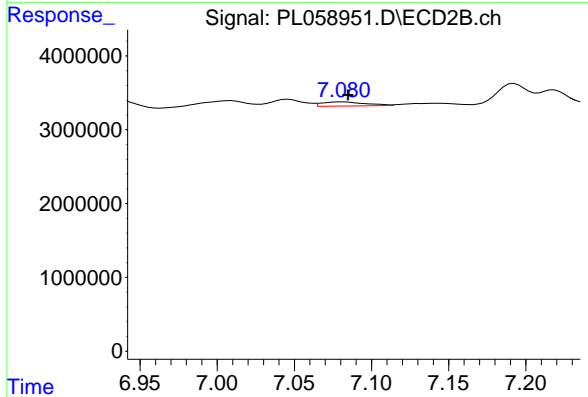
R.T.: 6.276 min
 Delta R.T.: 0.000 min
 Response: 18458852
 Conc: 40.54 ng/ml



#27 Chlordane-5

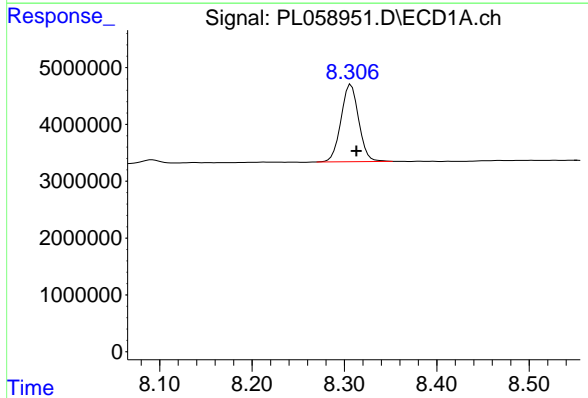
R.T.: 0.000 min
 Exp R.T.: 6.389 min
 Response: 0
 Conc: N.D.

Instrument :
 ECD_L
 ClientSampleId :
 NM25-COMP-2020-0-6



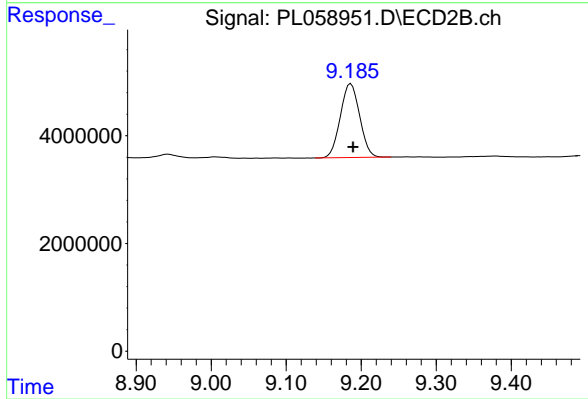
#27 Chlordane-5

R.T.: 7.081 min
 Delta R.T.: -0.003 min
 Response: 1106435
 Conc: 13.97 ng/ml



#28 Decachlorobiphenyl

R.T.: 8.307 min
 Delta R.T.: -0.006 min
 Response: 18131478
 Conc: 10.73 ng/ml



#28 Decachlorobiphenyl

R.T.: 9.186 min
 Delta R.T.: -0.003 min
 Response: 24520694
 Conc: 9.30 ng/ml