

Data Path : Z:\pestpcbsrv\HPCHEM1\ECD_L\Data\PL052821\
 Data File : PL066930.D
 Signal(s) : Signal #1: ECD1A.ch Signal #2: ECD2B.ch
 Acq On : 27 May 2021 11:24
 Operator : AR\AJ
 Sample : M2250-03
 Misc : PEST MDL 1 PPB
 ALS Vial : 9 Sample Multiplier: 1

Instrument :
 ECD_L
 ClientSampled :

Integration File signal 1: autoint1.e
 Integration File signal 2: autoint2.e
 Quant Time: May 28 05:35:29 2021
 Quant Method : Z:\pestpcbsrv\HPCHEM1\ECD_L\methods\PL052721CLP.M
 Quant Title : GC Extractables
 QLast Update : Thu May 27 02:30:58 2021
 Response via : Initial Calibration
 Integrator: ChemStation

Volume Inj. : 1 µl
 Signal #1 Phase : ZB-MR2 Signal #2 Phase: ZB-MR1
 Signal #1 Info : 30M x 0.32mm x0.2 Signal #2 Info : 30M x 0.32mm x 0.50µm

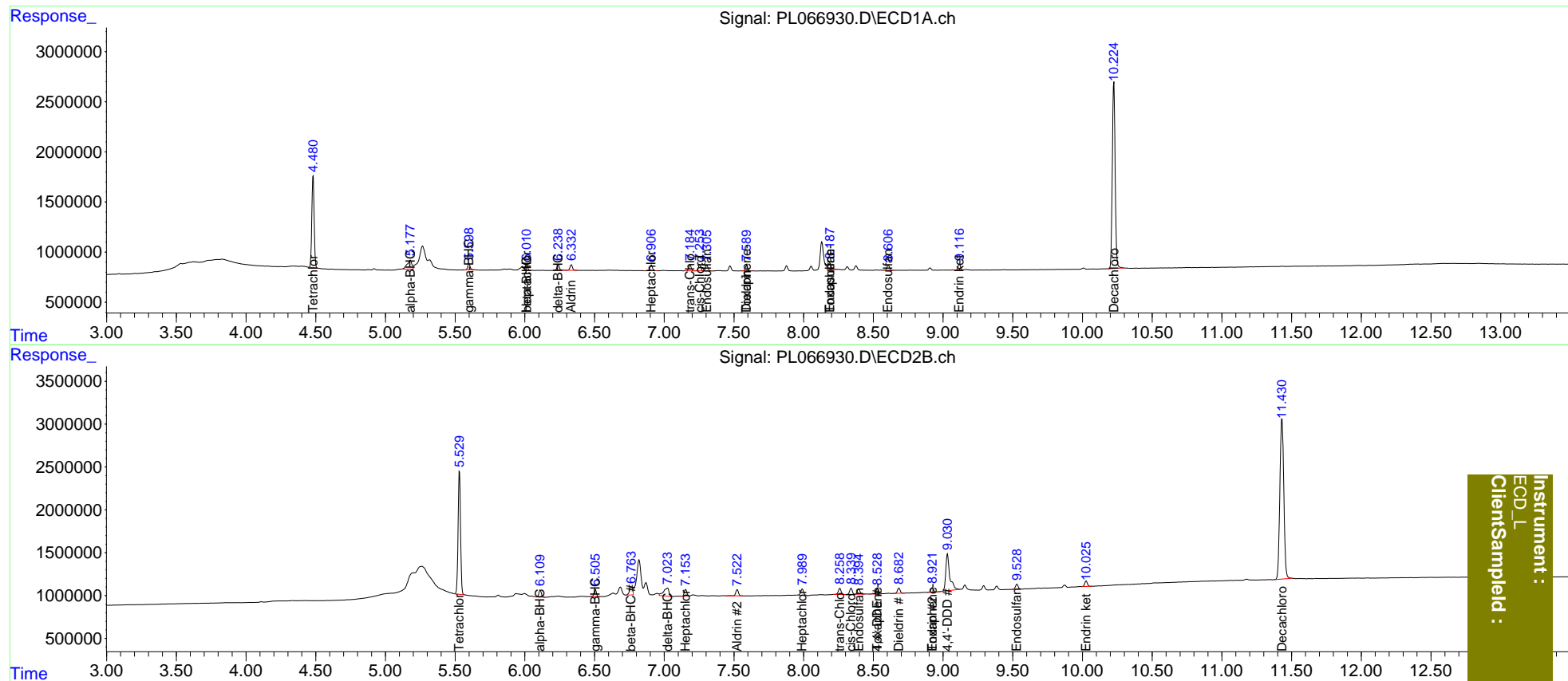
| Compound | RT#1 | RT#2 | Resp#1 | Resp#2 | ng/ml | ng/ml |
|-----------------------------|--------|--------|----------|----------|---------|-----------|
| System Monitoring Compounds | | | | | | |
| 1) SA Tetrachlo... | 4.481 | 5.531 | 10463501 | 17610817 | 19.607 | 19.916 |
| 27) SA Decachlor... | 10.225 | 11.431 | 26467452 | 36457626 | 39.471 | 39.933 |
| Target Compounds | | | | | | |
| 2) A alpha-BHC | 5.178 | 6.110 | 2037423 | 938670 | 2.519 | 0.853 # |
| 3) MA gamma-BHC... | 5.600 | 6.506 | 760420 | 963518 | 1.076 | 0.905 |
| 4) MA Heptachlor | 6.012 | 7.154 | 706375 | 985657 | 1.046 | 0.994 |
| 5) MB Aldrin | 6.334 | 7.524 | 723081 | 996839 | 1.061 | 1.046 |
| 6) B beta-BHC | 6.012f | 6.764 | 706375 | 1435080 | 1.921 | 2.244 |
| 7) B delta-BHC | 6.240 | 7.024 | 720222 | 2535209 | 1.031 | 2.294 # |
| 8) B Heptachlo... | 6.907 | 7.990 | 716863 | 1115947 | 1.105 | 1.213 |
| 9) A Endosulfan I | 7.306 | 8.395 | 700135 | 820315 | 1.108 | 0.997 |
| 10) B trans-Chl... | 7.186 | 8.260 | 733178 | 1004095 | 1.070 | 1.087 |
| 11) B cis-Chlor... | 7.254 | 8.341 | 795416 | 957010 | 1.163 | 1.052 |
| 12) B 4,4'-DDE | 0.000 | 8.529 | 0 | 798676 | N.D. | 0.951 |
| 13) MA Dieldrin | 7.591 | 8.684 | 674513 | 809896 | 0.994 | 0.924 |
| 14) MA Endrin | 0.000 | 8.923 | 0 | 658058 | N.D. | 0.908 |
| 15) B Endosulfa... | 8.188 | 0.000 | 1130058 | 0 | 1.882 | N.D. # |
| 16) A 4,4'-DDD | 0.000 | 9.032f | 0 | 8554505 | N.D. | 11.545 |
| 19) B Endosulfa... | 8.607 | 9.530 | 649300 | 796675 | 1.136 | 1.082 |
| 21) B Endrin ke... | 9.117 | 10.027 | 699164 | 848450 | 1.033 | 1.029 |
| 22) Toxaphene-1 | 7.591 | 8.529 | 674513 | 798676 | 239.212 | 152.659 # |
| 23) Toxaphene-2 | 0.000 | 8.923 | 0 | 658058 | N.D. | 119.599 |
| 24) Toxaphene-3 | 8.188 | 0.000 | 1130058 | 0 | 102.154 | N.D. # |

(f)=RT Delta > 1/2 Window (#)=Amounts differ by > 25% (m)=manual int.

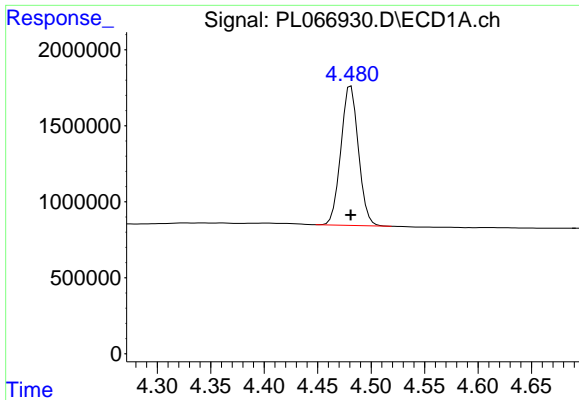
Data Path : Z:\pestpcbsrv\HPCHEM1\ECD_L\Data\PL052821\
 Data File : PL066930.D
 Signal(s) : Signal #1: ECD1A.ch Signal #2: ECD2B.ch
 Acq On : 27 May 2021 11:24
 Operator : AR\AJ
 Sample : M2250-03
 Misc : PEST MDL 1 PPB
 ALS Vial : 9 Sample Multiplier: 1

Integration File signal 1: autoint1.e
 Integration File signal 2: autoint2.e
 Quant Time: May 28 05:35:29 2021
 Quant Method : Z:\pestpcbsrv\HPCHEM1\ECD_L\methods\PL052721CLP.M
 Quant Title : GC Extractables
 QLast Update : Thu May 27 02:30:58 2021
 Response via : Initial Calibration
 Integrator: ChemStation

Volume Inj. : 1 µl
 Signal #1 Phase : ZB-MR2 Signal #2 Phase: ZB-MR1
 Signal #1 Info : 30M x 0.32mm x0.2 Signal #2 Info : 30M x 0.32mm x 0.50µm

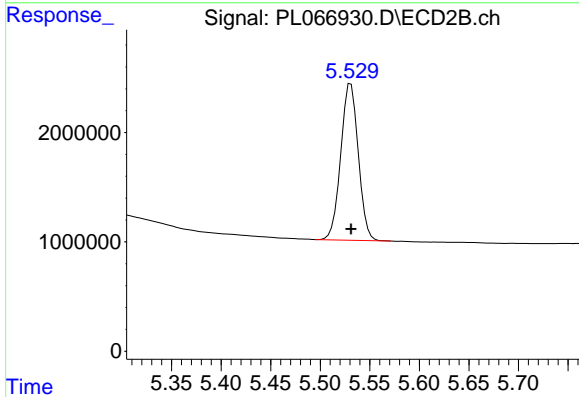


Instrument :
 ECD_L
 ClientSampleId :

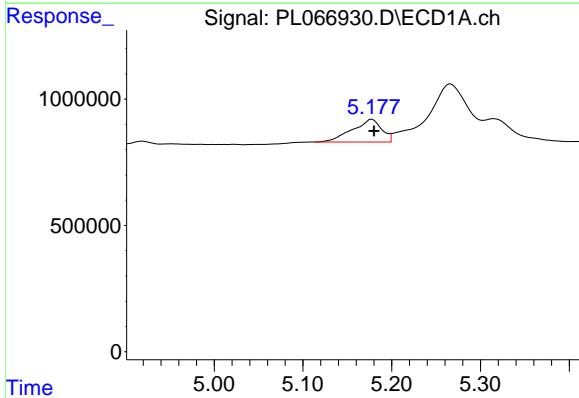


#1 Tetrachloro-m-xylene
 R.T.: 4.481 min
 Delta R.T.: 0.000 min
 Response: 10463501
 Conc: 19.61 ng/ml

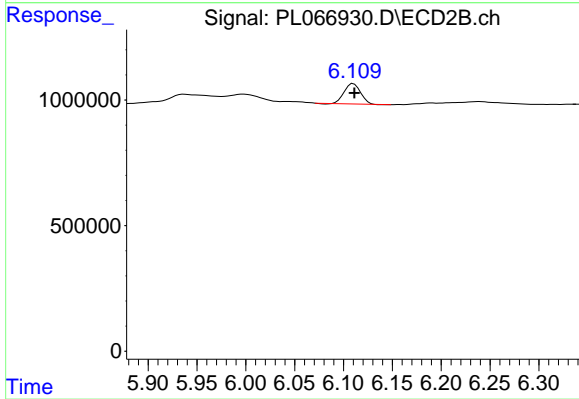
Instrument :
 ECD_L
 ClientSampled :



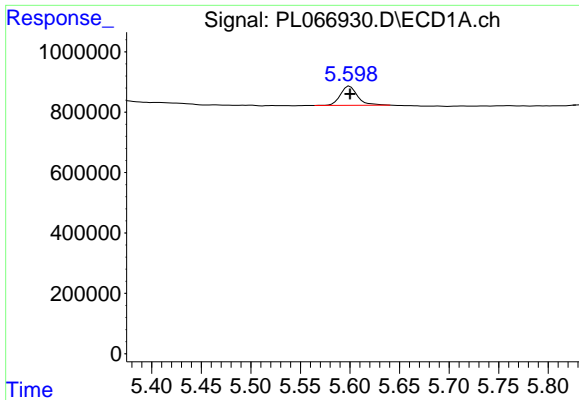
#1 Tetrachloro-m-xylene
 R.T.: 5.531 min
 Delta R.T.: 0.000 min
 Response: 17610817
 Conc: 19.92 ng/ml



#2 alpha-BHC
 R.T.: 5.178 min
 Delta R.T.: -0.002 min
 Response: 2037423
 Conc: 2.52 ng/ml

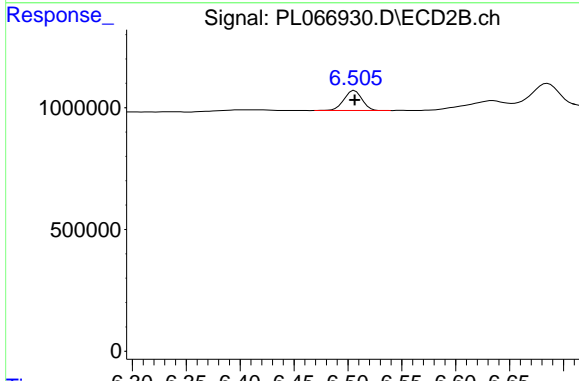


#2 alpha-BHC
 R.T.: 6.110 min
 Delta R.T.: 0.000 min
 Response: 938670
 Conc: 0.85 ng/ml

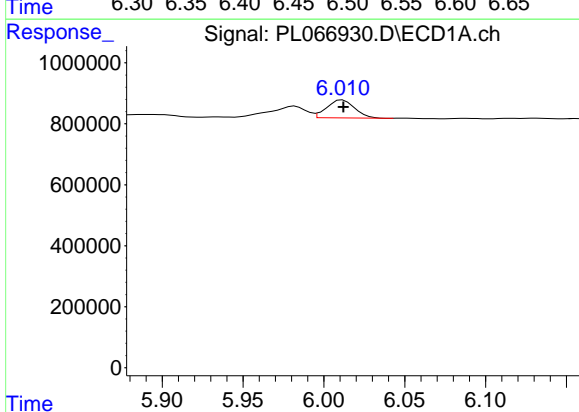


#3 gamma-BHC (Lindane)
 R.T.: 5.600 min
 Delta R.T.: 0.000 min
 Response: 760420
 Conc: 1.08 ng/ml

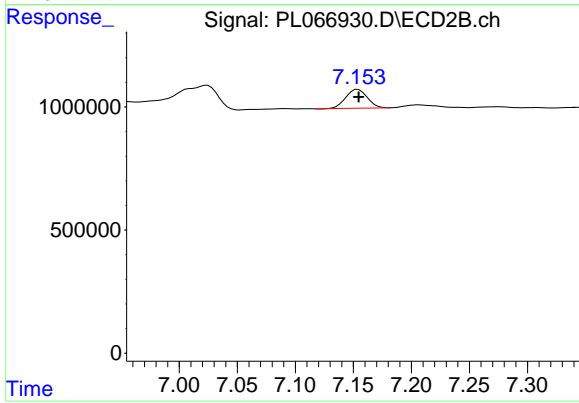
Instrument :
 ECD_L
 ClientSampleId :



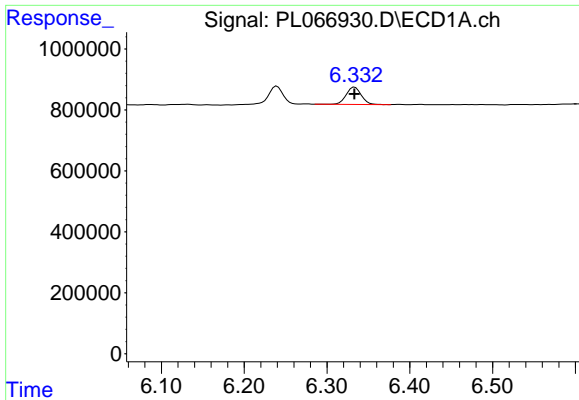
#3 gamma-BHC (Lindane)
 R.T.: 6.506 min
 Delta R.T.: 0.000 min
 Response: 963518
 Conc: 0.90 ng/ml



#4 Heptachlor
 R.T.: 6.012 min
 Delta R.T.: 0.000 min
 Response: 706375
 Conc: 1.05 ng/ml

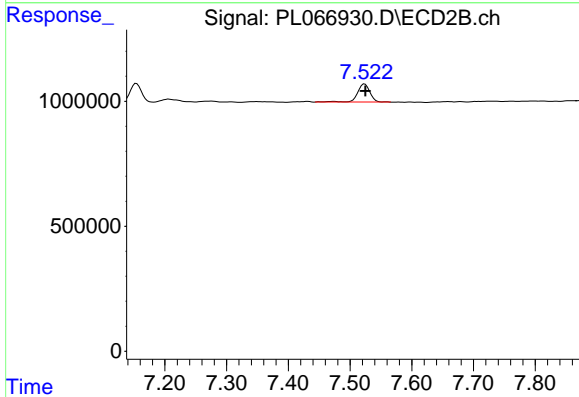


#4 Heptachlor
 R.T.: 7.154 min
 Delta R.T.: 0.000 min
 Response: 985657
 Conc: 0.99 ng/ml

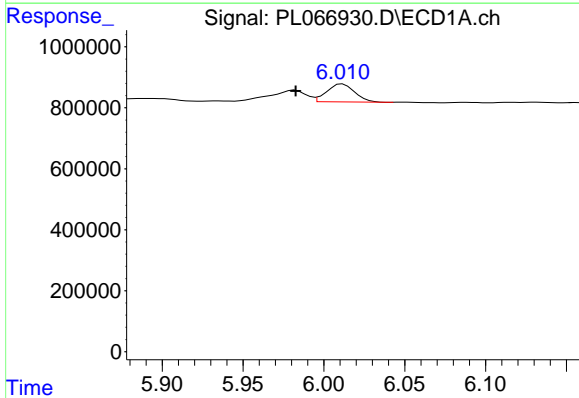


#5 Aldrin
 R.T.: 6.334 min
 Delta R.T.: 0.000 min
 Response: 723081
 Conc: 1.06 ng/ml

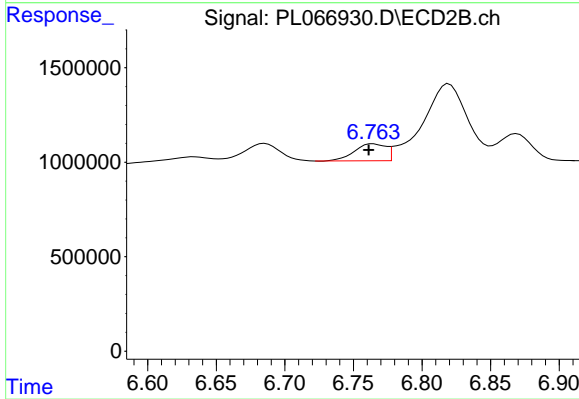
Instrument :
 ECD_L
 ClientSampleId :



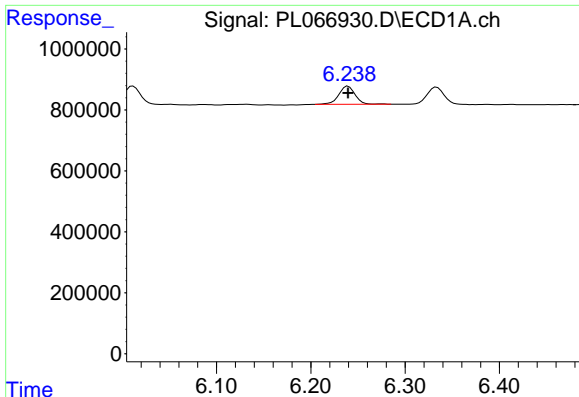
#5 Aldrin
 R.T.: 7.524 min
 Delta R.T.: -0.001 min
 Response: 996839
 Conc: 1.05 ng/ml



#6 beta-BHC
 R.T.: 6.012 min
 Delta R.T.: 0.029 min
 Response: 706375
 Conc: 1.92 ng/ml



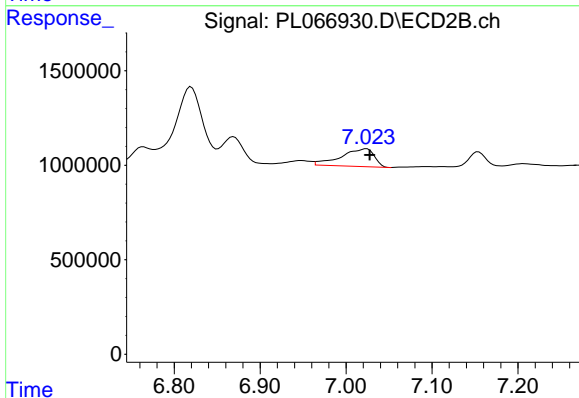
#6 beta-BHC
 R.T.: 6.764 min
 Delta R.T.: 0.003 min
 Response: 1435080
 Conc: 2.24 ng/ml



#7 delta-BHC

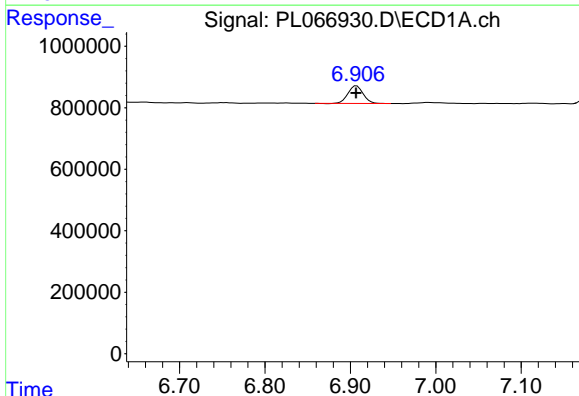
R.T.: 6.240 min
 Delta R.T.: 0.000 min
 Response: 720222
 Conc: 1.03 ng/ml

Instrument :
 ECD_L
 ClientSampleId :



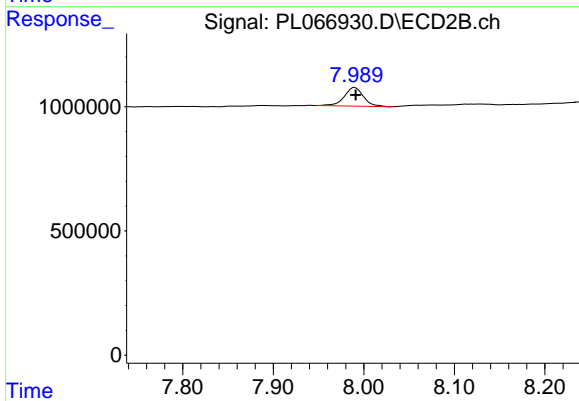
#7 delta-BHC

R.T.: 7.024 min
 Delta R.T.: -0.003 min
 Response: 2535209
 Conc: 2.29 ng/ml



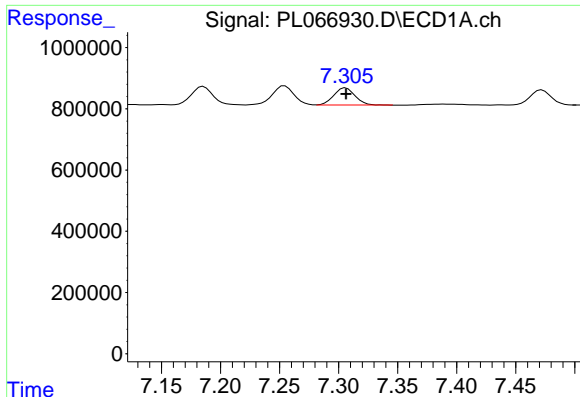
#8 Heptachlor epoxide

R.T.: 6.907 min
 Delta R.T.: 0.000 min
 Response: 716863
 Conc: 1.10 ng/ml



#8 Heptachlor epoxide

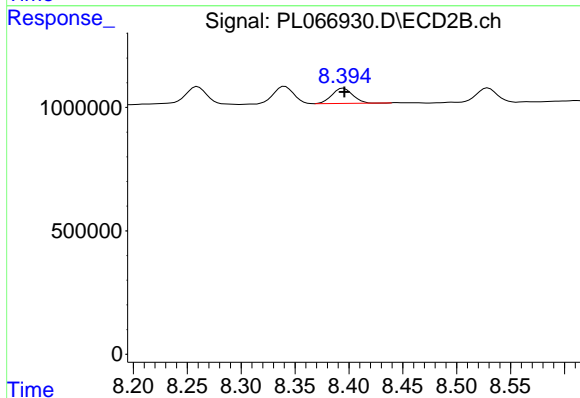
R.T.: 7.990 min
 Delta R.T.: 0.000 min
 Response: 1115947
 Conc: 1.21 ng/ml



#9 Endosulfan I

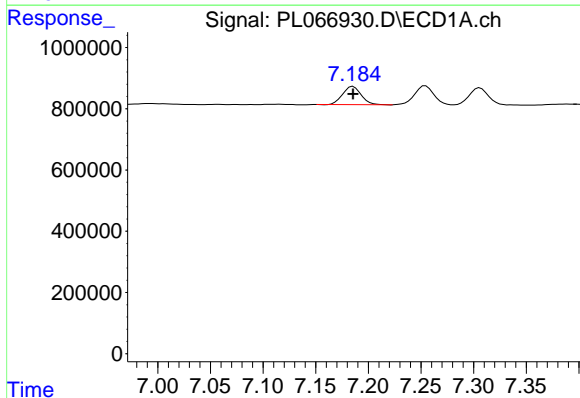
R.T.: 7.306 min
 Delta R.T.: 0.000 min
 Response: 700135
 Conc: 1.11 ng/ml

Instrument :
 ECD_L
 ClientSampled :



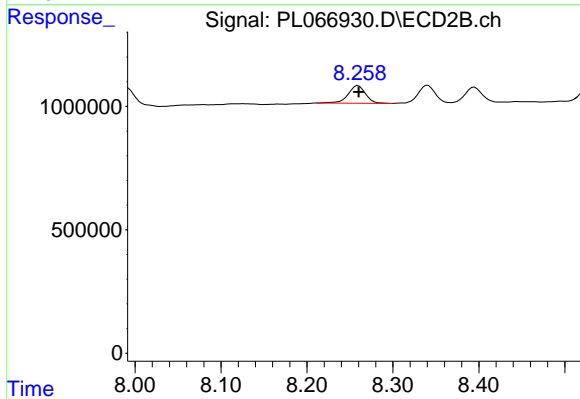
#9 Endosulfan I

R.T.: 8.395 min
 Delta R.T.: 0.000 min
 Response: 820315
 Conc: 1.00 ng/ml



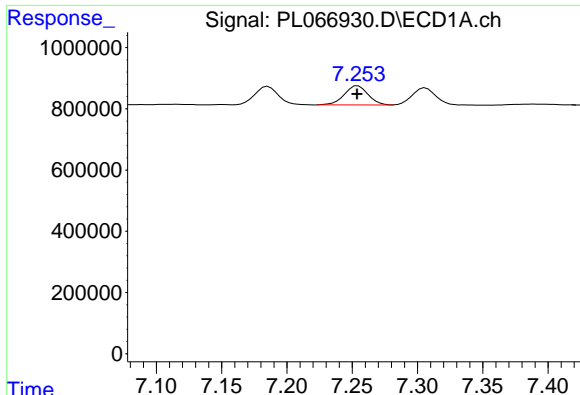
#10 trans-Chlordane

R.T.: 7.186 min
 Delta R.T.: 0.000 min
 Response: 733178
 Conc: 1.07 ng/ml



#10 trans-Chlordane

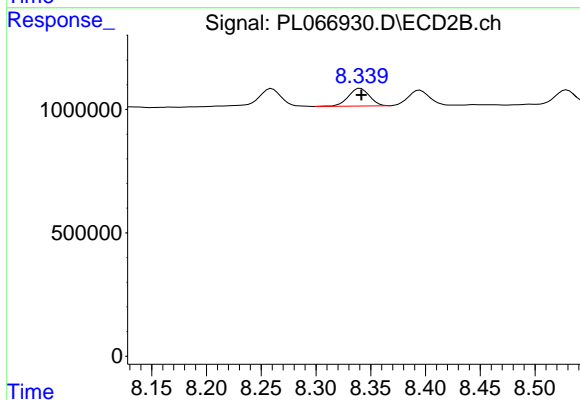
R.T.: 8.260 min
 Delta R.T.: 0.000 min
 Response: 1004095
 Conc: 1.09 ng/ml



#11 cis-Chlordane

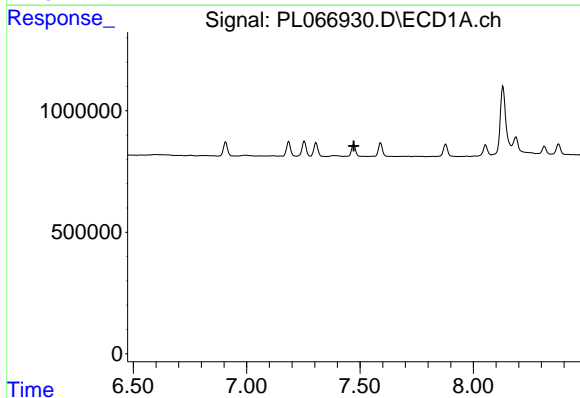
R.T.: 7.254 min
 Delta R.T.: 0.000 min
 Response: 795416
 Conc: 1.16 ng/ml

Instrument :
 ECD_L
 ClientSampleId :



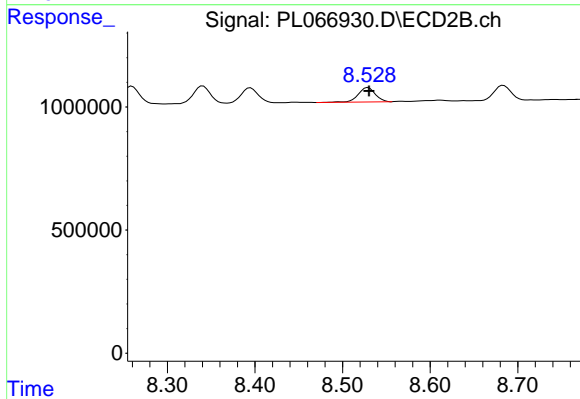
#11 cis-Chlordane

R.T.: 8.341 min
 Delta R.T.: 0.000 min
 Response: 957010
 Conc: 1.05 ng/ml



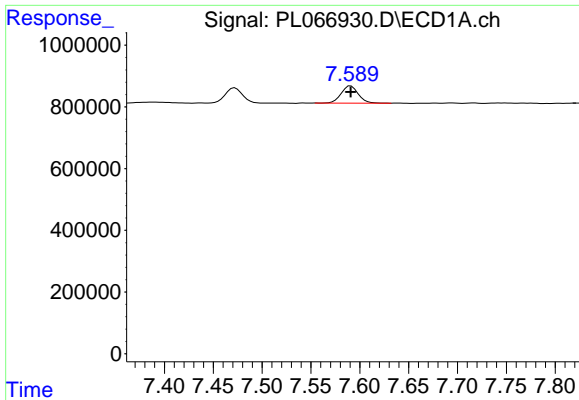
#12 4,4'-DDE

R.T.: 0.000 min
 Exp R.T. : 7.472 min
 Response: 0
 Conc: N.D.



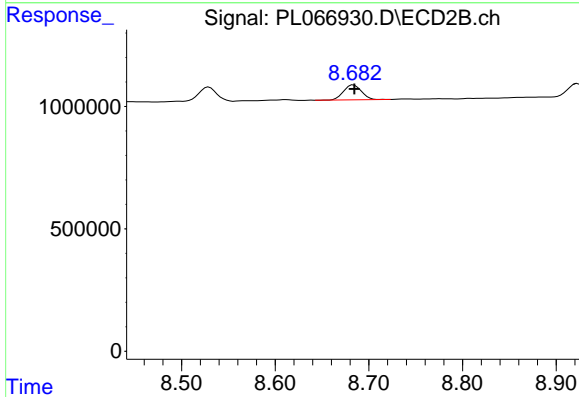
#12 4,4'-DDE

R.T.: 8.529 min
 Delta R.T.: 0.000 min
 Response: 798676
 Conc: 0.95 ng/ml

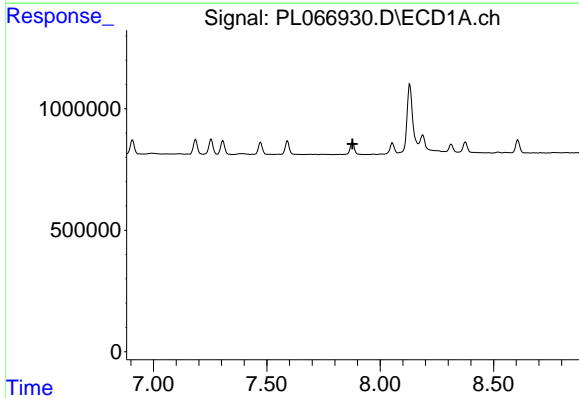


#13 Dieldrin
 R.T.: 7.591 min
 Delta R.T.: 0.000 min
 Response: 674513
 Conc: 0.99 ng/ml

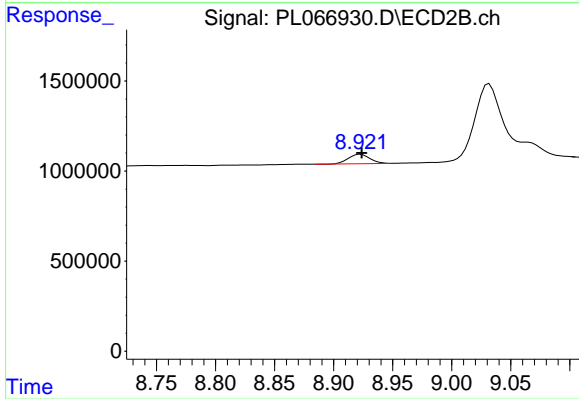
Instrument :
 ECD_L
 ClientSampled :



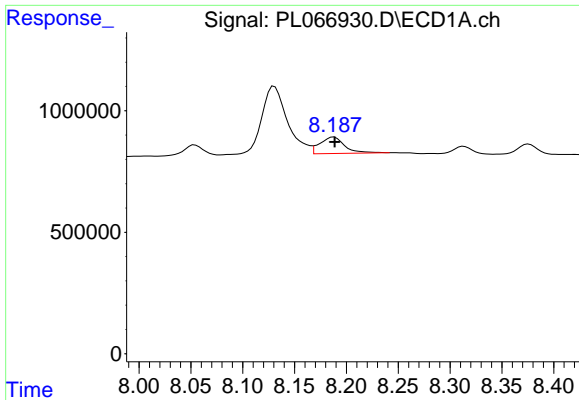
#13 Dieldrin
 R.T.: 8.684 min
 Delta R.T.: -0.001 min
 Response: 809896
 Conc: 0.92 ng/ml



#14 Endrin
 R.T.: 0.000 min
 Exp R.T. : 7.878 min
 Response: 0
 Conc: N.D.



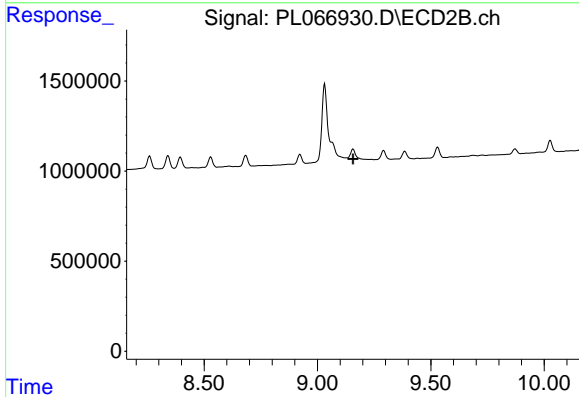
#14 Endrin
 R.T.: 8.923 min
 Delta R.T.: 0.000 min
 Response: 658058
 Conc: 0.91 ng/ml



#15 Endosulfan II

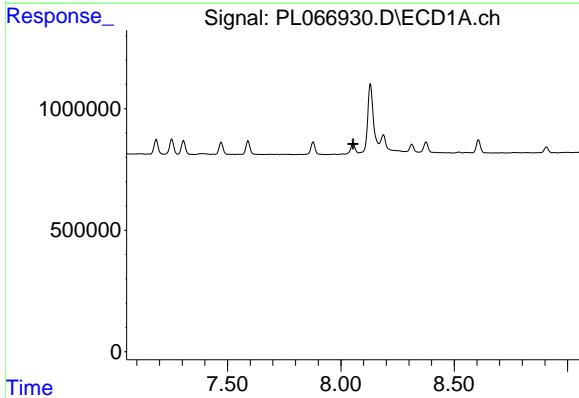
R.T.: 8.188 min
 Delta R.T.: 0.000 min
 Response: 1130058
 Conc: 1.88 ng/ml

Instrument :
 ECD_L
 ClientSampled :



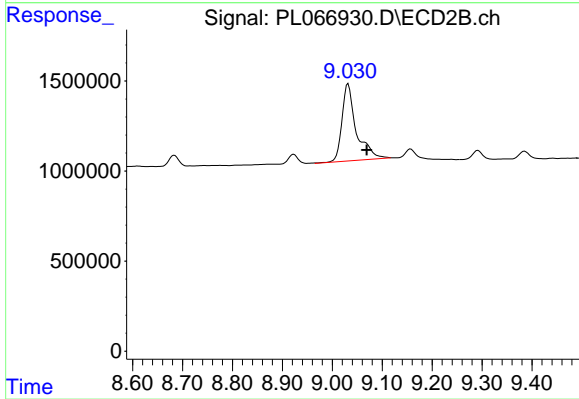
#15 Endosulfan II

R.T.: 0.000 min
 Exp R.T. : 9.158 min
 Response: 0
 Conc: N.D.



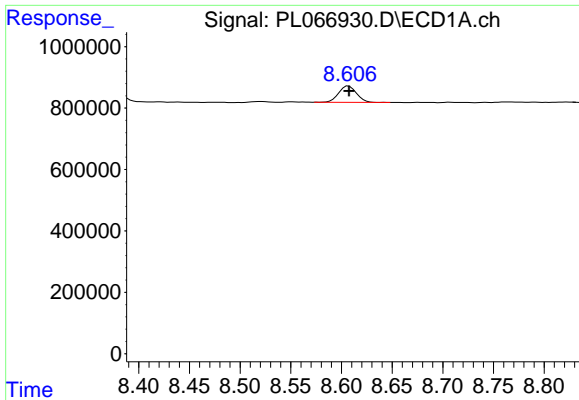
#16 4,4'-DDD

R.T.: 0.000 min
 Exp R.T. : 8.053 min
 Response: 0
 Conc: N.D.



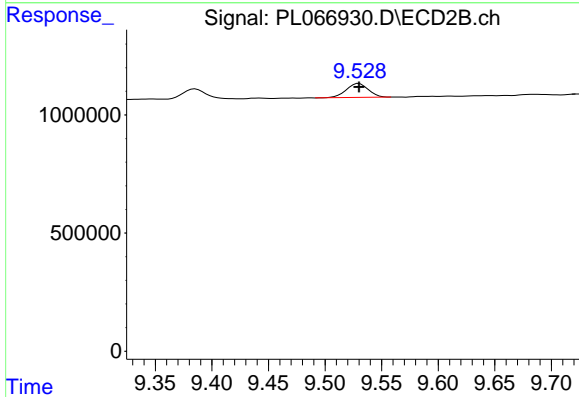
#16 4,4'-DDD

R.T.: 9.032 min
 Delta R.T.: -0.037 min
 Response: 8554505
 Conc: 11.54 ng/ml

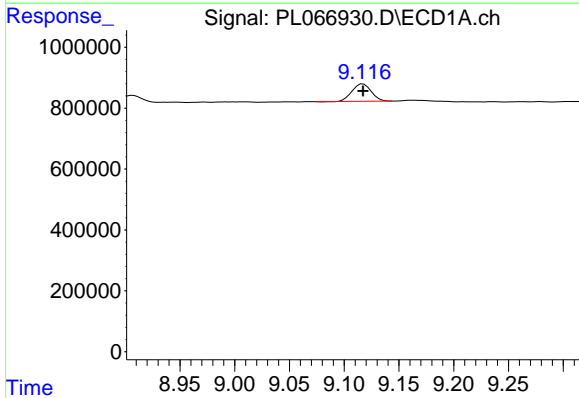


#19 Endosulfan Sulfate
 R.T.: 8.607 min
 Delta R.T.: 0.000 min
 Response: 649300
 Conc: 1.14 ng/ml

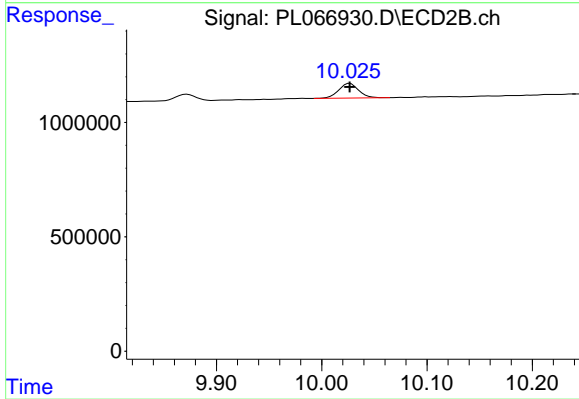
Instrument :
 ECD_L
 ClientSampleId :



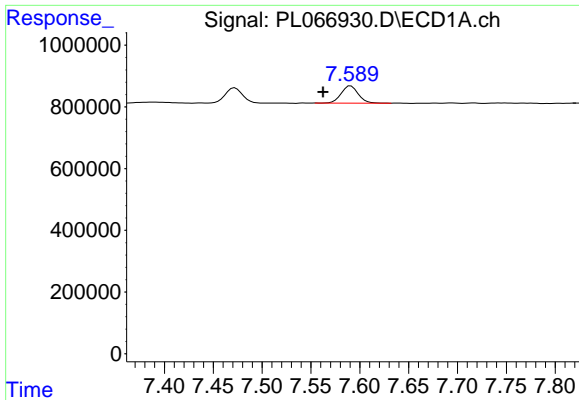
#19 Endosulfan Sulfate
 R.T.: 9.530 min
 Delta R.T.: 0.000 min
 Response: 796675
 Conc: 1.08 ng/ml



#21 Endrin ketone
 R.T.: 9.117 min
 Delta R.T.: 0.000 min
 Response: 699164
 Conc: 1.03 ng/ml

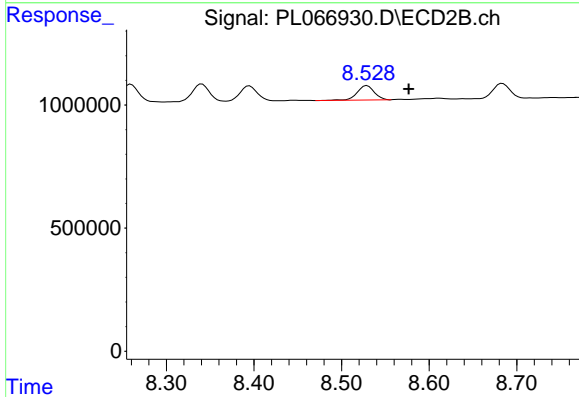


#21 Endrin ketone
 R.T.: 10.027 min
 Delta R.T.: 0.000 min
 Response: 848450
 Conc: 1.03 ng/ml

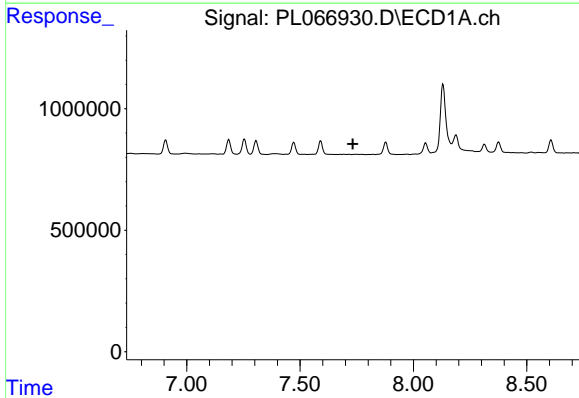


#22 Toxaphene-1
 R.T.: 7.591 min
 Delta R.T.: 0.028 min
 Response: 674513
 Conc: 239.21 ng/ml

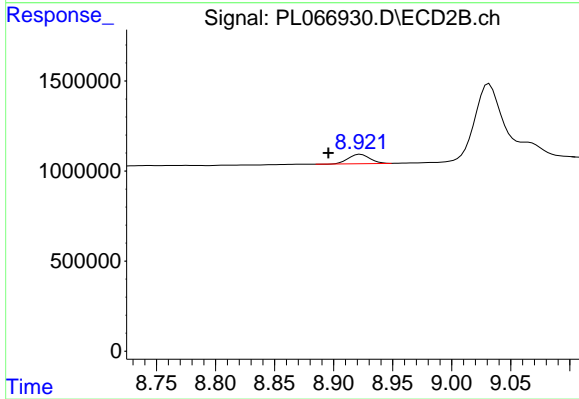
Instrument :
 ECD_L
 ClientSampleId :



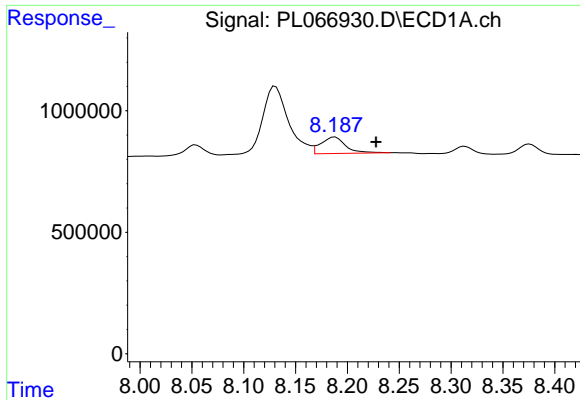
#22 Toxaphene-1
 R.T.: 8.529 min
 Delta R.T.: -0.048 min
 Response: 798676
 Conc: 152.66 ng/ml



#23 Toxaphene-2
 R.T.: 0.000 min
 Exp R.T. : 7.732 min
 Response: 0
 Conc: N.D.

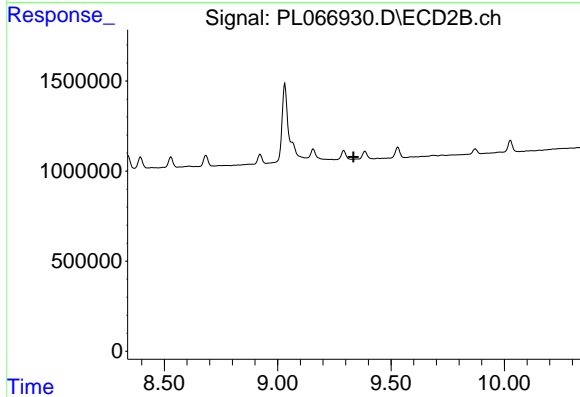


#23 Toxaphene-2
 R.T.: 8.923 min
 Delta R.T.: 0.027 min
 Response: 658058
 Conc: 119.60 ng/ml

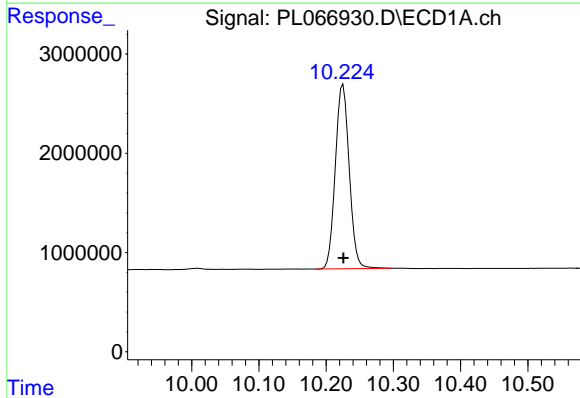


#24 Toxaphene-3
 R.T.: 8.188 min
 Delta R.T.: -0.040 min
 Response: 1130058
 Conc: 102.15 ng/ml

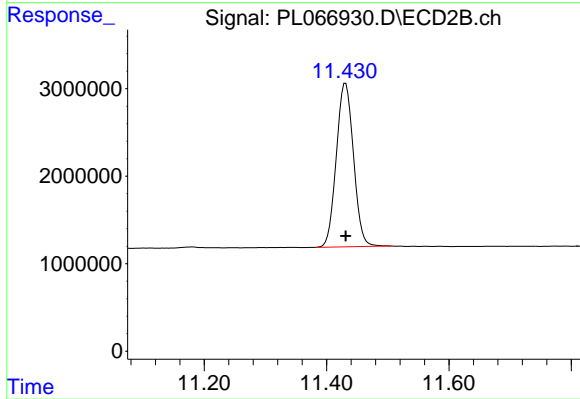
Instrument :
 ECD_L
 ClientSampleId :



#24 Toxaphene-3
 R.T.: 0.000 min
 Exp R.T. : 9.335 min
 Response: 0
 Conc: N.D.



#27 Decachlorobiphenyl
 R.T.: 10.225 min
 Delta R.T.: 0.000 min
 Response: 26467452
 Conc: 39.47 ng/ml



#27 Decachlorobiphenyl
 R.T.: 11.431 min
 Delta R.T.: 0.000 min
 Response: 36457626
 Conc: 39.93 ng/ml