

Data Path : Z:\pestpcbsrv\HPCHEM1\ECD_L\Data\PL052822\
 Data File : PL075177.D
 Signal(s) : Signal #1: ECD1A.ch Signal #2: ECD2B.ch
 Acq On : 28 May 2022 17:57
 Operator : AR\AJ
 Sample : PTOXICC1000
 Misc :
 ALS Vial : 15 Sample Multiplier: 1

Instrument :
 ECD_L
 ClientSampleId :

Integration File signal 1: autoint1.e
 Integration File signal 2: autoint2.e
 Quant Time: May 31 14:12:43 2022
 Quant Method : Z:\pestpcbsrv\HPCHEM1\ECD_L\methods\LTX052822.M
 Quant Title : GC Extractables
 QLast Update : Tue May 31 14:12:07 2022
 Response via : Initial Calibration
 Integrator: ChemStation

Volume Inj. : 2 µl
 Signal #1 Phase : Rtx-CLPesticide 1 Signal #2 Phase: Rtx-CLPesticide 1
 Signal #1 Info : 30M x 0.32mm x0.3 Signal #2 Info : 30M x 0.32mm x 0.25µm

Compound	RT#1	RT#2	Resp#1	Resp#2	ng/ml	ng/ml

System Monitoring Compounds						
1) SA Tetrachlo...	5.641	4.641	63225464	166.5E6	96.092	95.592
7) SA Decachlor...	11.642	10.392	52680135	136.7E6	88.984	88.926
Target Compounds						
2) Toxaphene-1	8.710	7.726	3644680	8934601	917.858	927.407
3) Toxaphene-2	9.032	8.398	5331632	29427284	1274.548	935.451 #
4) Toxaphene-3	9.474	8.816	5643363	13913459	929.772	893.594
5) Toxaphene-4	9.557	9.045	10429993	22792012	964.412	906.967
6) Toxaphene-5	10.092	9.184	7852535	33059006	902.525	924.475

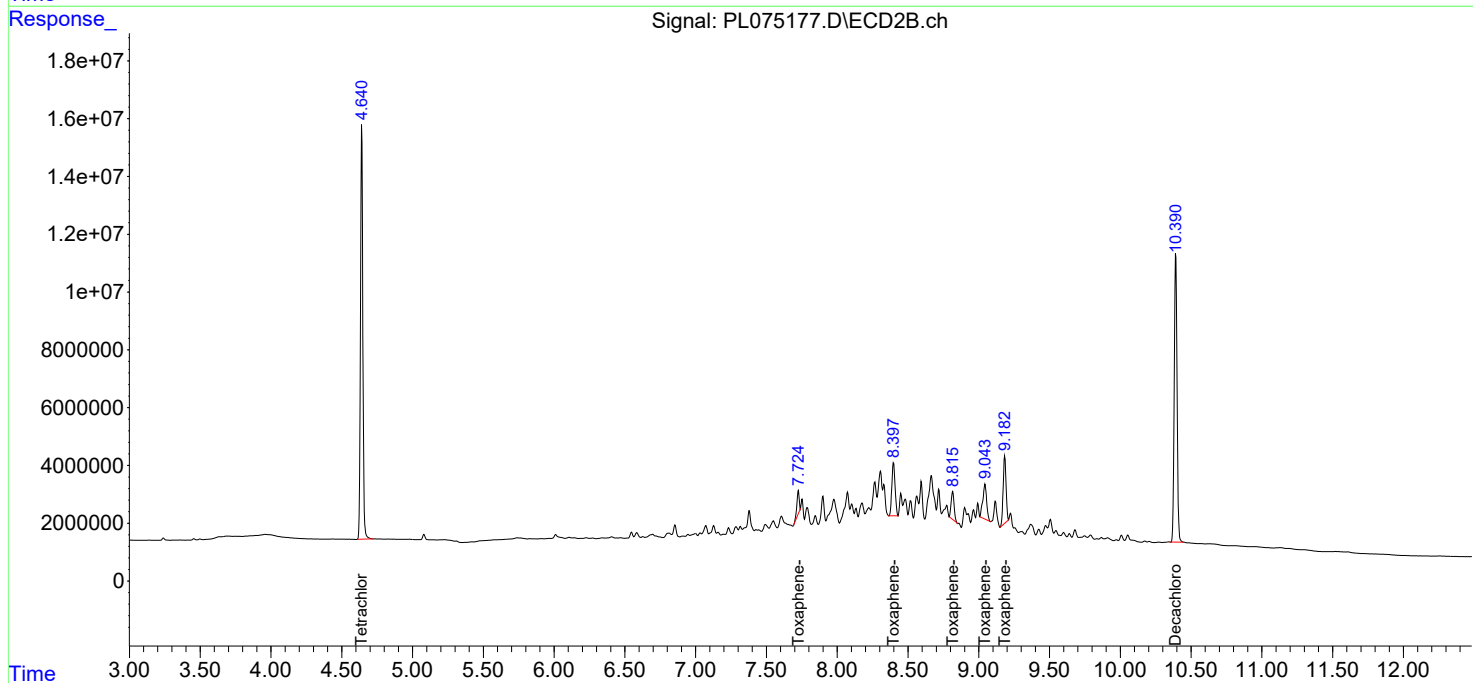
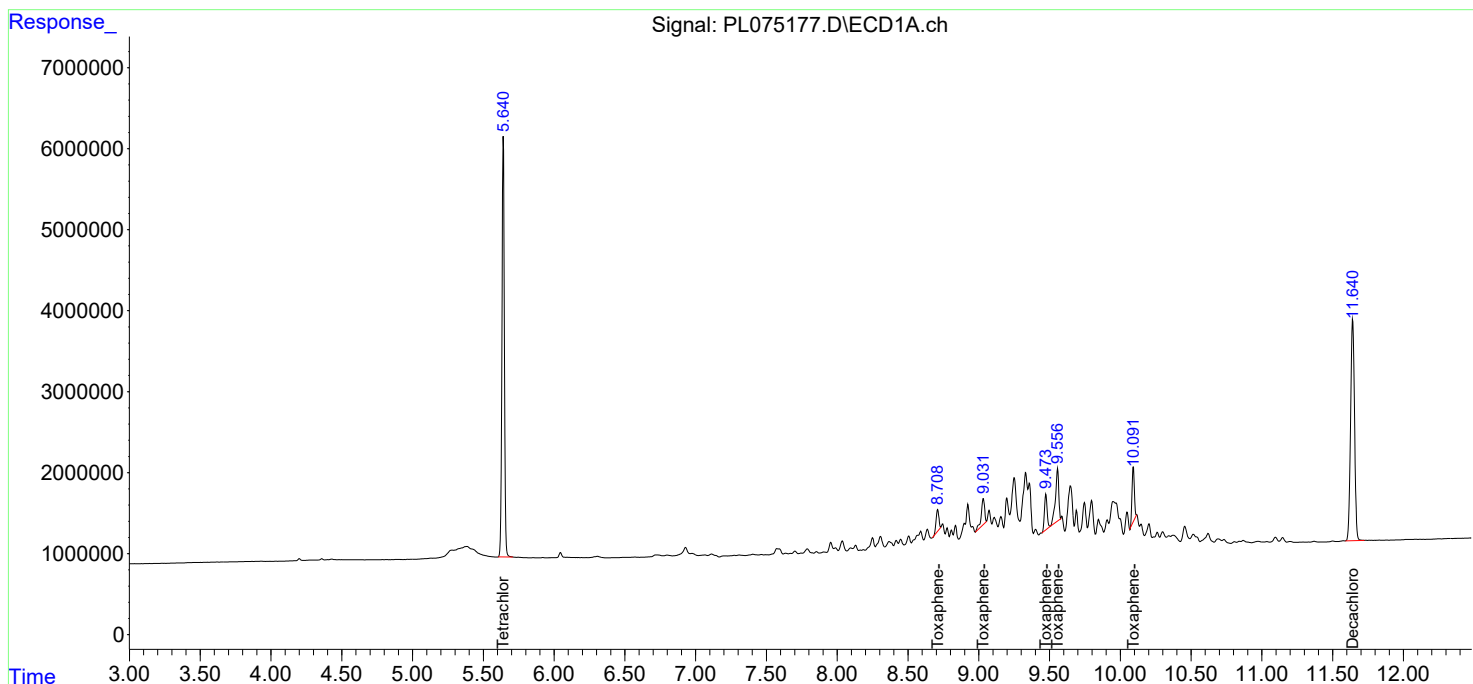
(f)=RT Delta > 1/2 Window (#)=Amounts differ by > 25% (m)=manual int.

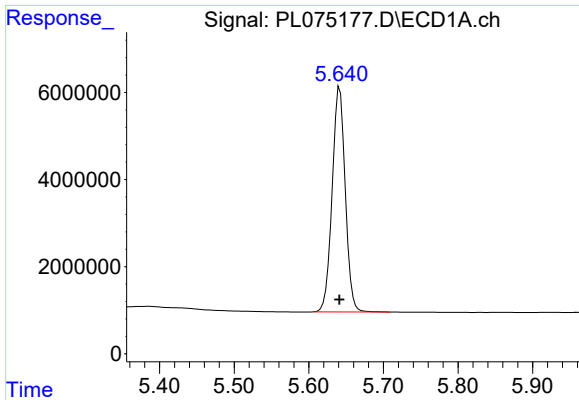
Data Path : Z:\pestpcbsrv\HPCHEM1\ECD_L\Data\PL052822\
 Data File : PL075177.D
 Signal(s) : Signal #1: ECD1A.ch Signal #2: ECD2B.ch
 Acq On : 28 May 2022 17:57
 Operator : AR\AJ
 Sample : PTOXICC1000
 Misc :
 ALS Vial : 15 Sample Multiplier: 1

Instrument :
 ECD_L
 ClientSampleId :

Integration File signal 1: autoint1.e
 Integration File signal 2: autoint2.e
 Quant Time: May 31 14:12:43 2022
 Quant Method : Z:\pestpcbsrv\HPCHEM1\ECD_L\methods\LTX052822.M
 Quant Title : GC Extractables
 QLast Update : Tue May 31 14:12:07 2022
 Response via : Initial Calibration
 Integrator: ChemStation

Volume Inj. : 2 µl
 Signal #1 Phase : Rtx-CLPesticide 1 Signal #2 Phase: Rtx-CLPesticide 1
 Signal #1 Info : 30M x 0.32mm x0.3 Signal #2 Info : 30M x 0.32mm x 0.25µm

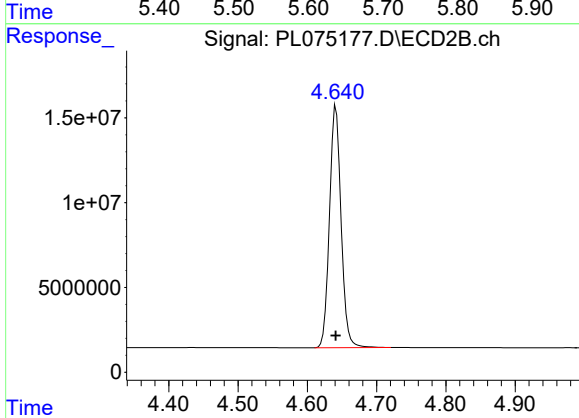




#1 Tetrachloro-m-xylene

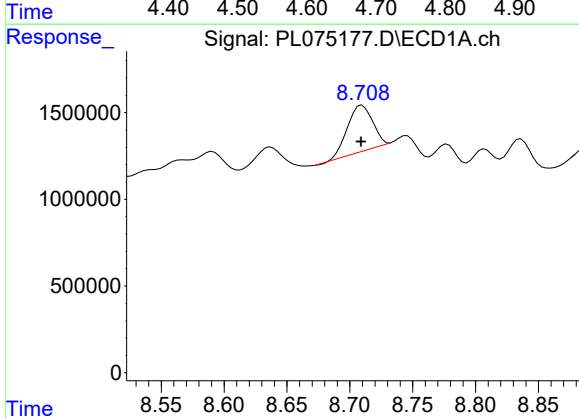
R.T.: 5.641 min
 Delta R.T.: 0.000 min
 Response: 63225464
 Conc: 96.09 ng/ml

Instrument :
 ECD_L
 ClientSampleId :



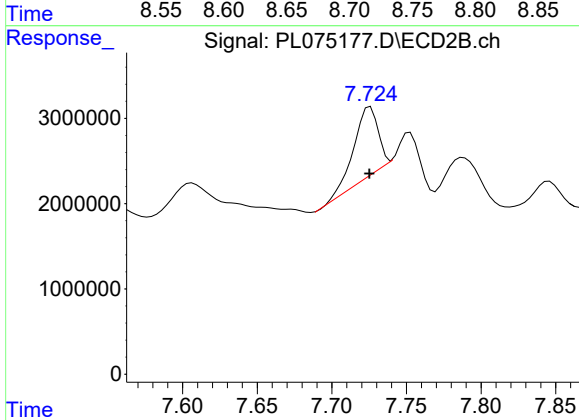
#1 Tetrachloro-m-xylene

R.T.: 4.641 min
 Delta R.T.: 0.000 min
 Response: 166525283
 Conc: 95.59 ng/ml



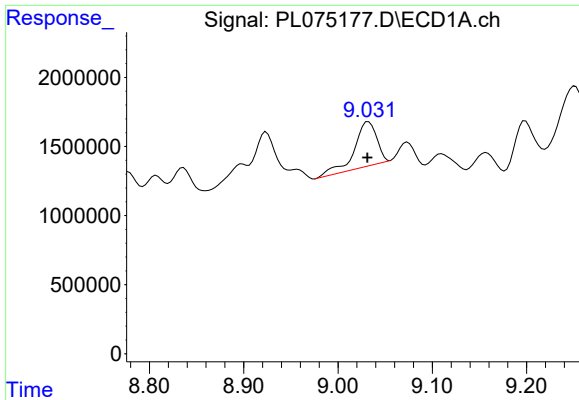
#2 Toxaphene-1

R.T.: 8.710 min
 Delta R.T.: 0.000 min
 Response: 3644680
 Conc: 917.86 ng/ml



#2 Toxaphene-1

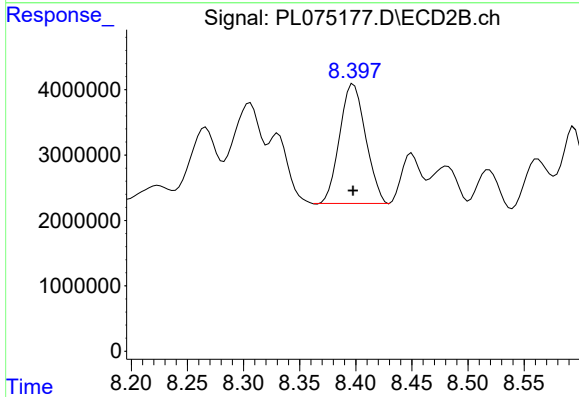
R.T.: 7.726 min
 Delta R.T.: 0.000 min
 Response: 8934601
 Conc: 927.41 ng/ml



#3 Toxaphene-2

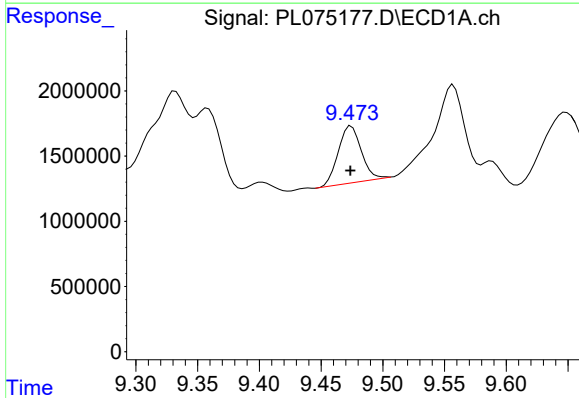
R.T.: 9.032 min
 Delta R.T.: 0.001 min
 Response: 5331632
 Conc: 1274.55 ng/ml

Instrument :
 ECD_L
 ClientSampleId :



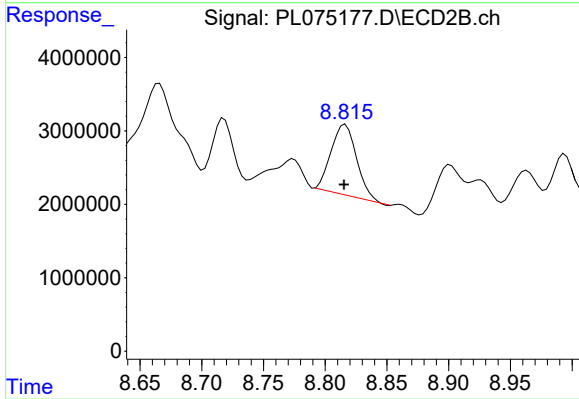
#3 Toxaphene-2

R.T.: 8.398 min
 Delta R.T.: 0.000 min
 Response: 29427284
 Conc: 935.45 ng/ml



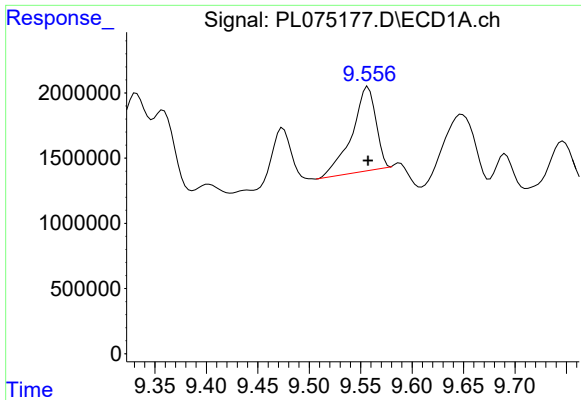
#4 Toxaphene-3

R.T.: 9.474 min
 Delta R.T.: 0.000 min
 Response: 5643363
 Conc: 929.77 ng/ml



#4 Toxaphene-3

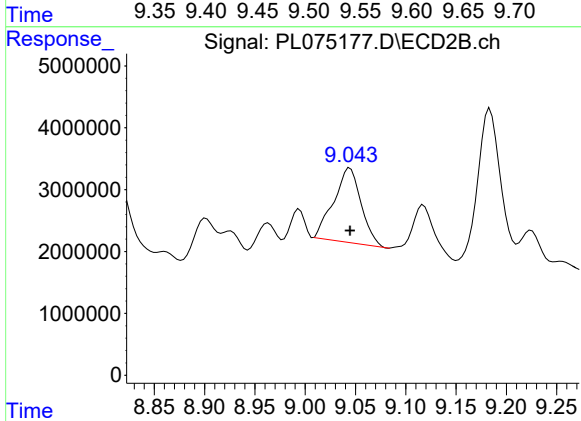
R.T.: 8.816 min
 Delta R.T.: 0.001 min
 Response: 13913459
 Conc: 893.59 ng/ml



#5 Toxaphene-4

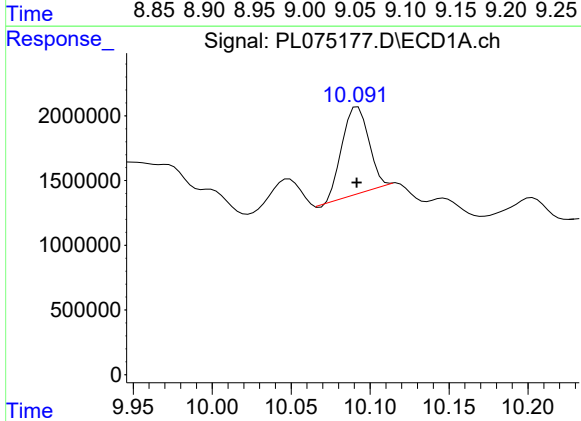
R.T.: 9.557 min
 Delta R.T.: 0.000 min
 Response: 10429993
 Conc: 964.41 ng/ml

Instrument :
 ECD_L
 ClientSampleId :



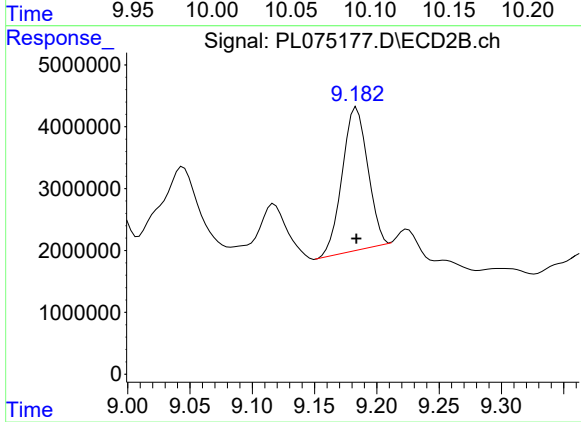
#5 Toxaphene-4

R.T.: 9.045 min
 Delta R.T.: 0.000 min
 Response: 22792012
 Conc: 906.97 ng/ml



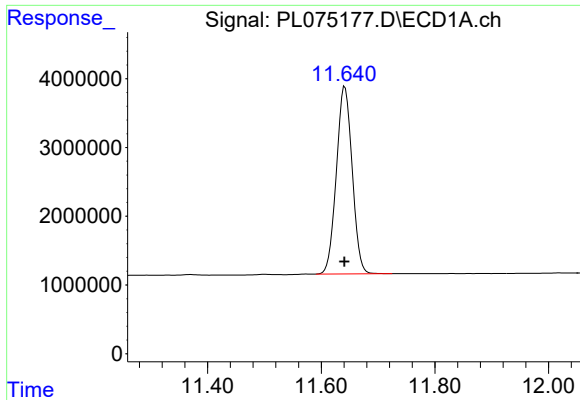
#6 Toxaphene-5

R.T.: 10.092 min
 Delta R.T.: 0.000 min
 Response: 7852535
 Conc: 902.53 ng/ml



#6 Toxaphene-5

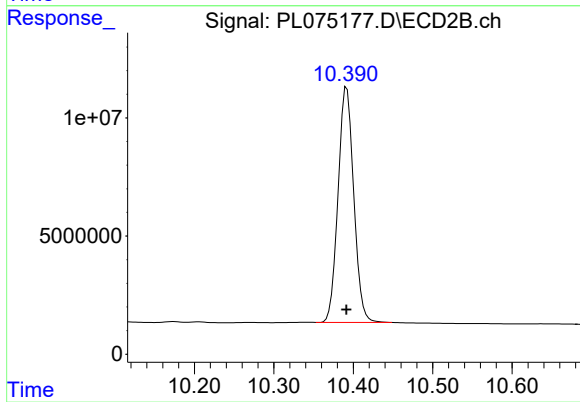
R.T.: 9.184 min
 Delta R.T.: 0.000 min
 Response: 33059006
 Conc: 924.47 ng/ml



#7 Decachlorobiphenyl

R.T.: 11.642 min
Delta R.T.: 0.000 min
Response: 52680135
Conc: 88.98 ng/ml

Instrument :
ECD_L
ClientSampleId :



#7 Decachlorobiphenyl

R.T.: 10.392 min
Delta R.T.: 0.000 min
Response: 136740839
Conc: 88.93 ng/ml