

Data Path : Z:\pestpcbsrv\HPCHEM1\ECD_L\Data\PL052824\
 Data File : PL089786.D
 Signal(s) : Signal #1: ECD1A.ch Signal #2: ECD2B.ch
 Acq On : 29 May 2024 02:54
 Operator : AR\AJ
 Sample : P2570-21
 Misc :
 ALS Vial : 28 Sample Multiplier: 1

Instrument :
 ECD_L
 ClientSampleId :
 BH653

Manual Integrations
 APPROVED

Reviewed By :Abdul Mirza 06/03/2024
 Supervised By :Ankita Jodhani 06/03/2024

Integration File signal 1: autoint1.e
 Integration File signal 2: autoint2.e
 Quant Time: May 29 07:46:45 2024
 Quant Method : Z:\pestpcbsrv\HPCHEM1\ECD_L\methods\PL051724CLP.M
 Quant Title : GC Extractables
 QLast Update : Fri May 17 15:59:18 2024
 Response via : Initial Calibration
 Integrator: ChemStation

Volume Inj. : 1 µl
 Signal #1 Phase : ZB-MR2 Signal #2 Phase: ZB-MR1
 Signal #1 Info : 30M x 0.32mm x0.2 Signal #2 Info : 30M x 0.32mm x 0.50µm

	Compound	RT#1	RT#2	Resp#1	Resp#2	ng/ml	ng/ml

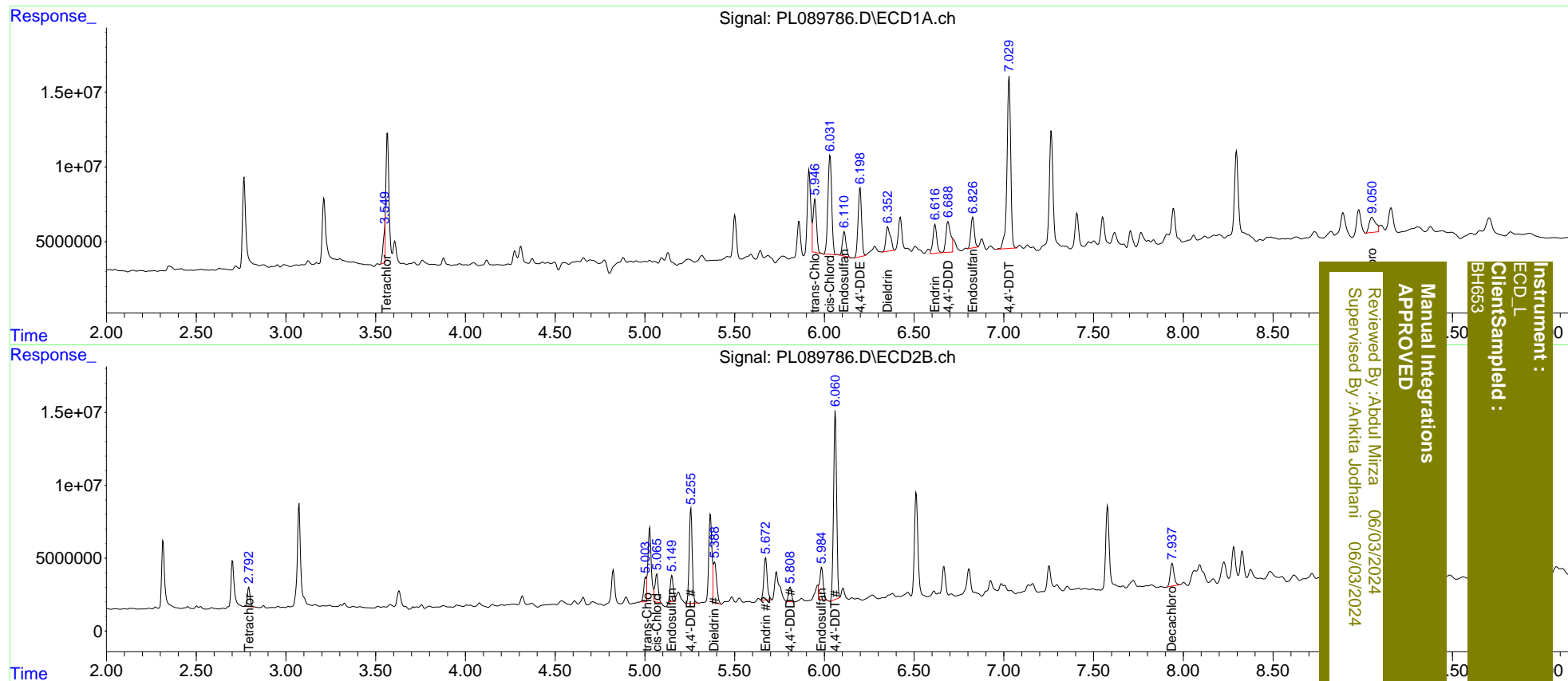
System Monitoring Compounds							
1)	SA Tetrachlo...	3.549	2.792	13155293	14077948	6.765m	10.971m#
27)	SA Decachlor...	9.050	7.939	25440926	23146818	20.716m	19.293
Target Compounds							
9)	A Endosulfan I	6.110	5.149	22603147	20570449	11.261m	14.809m#
10)	B trans-Chl...	5.946	5.003	47714620	19911930	21.974m	12.901m#
11)	B cis-Chlor...	6.032	5.065	97437406	23493263	44.576	14.774m#
12)	B 4,4'-DDE	6.199	5.257	62295149	75537380	34.031	53.798 #
13)	MA Dieldrin	6.354	5.388	28866122	36812766	14.239	24.071m#
14)	MA Endrin	6.616	5.672	28698147	37628340	16.847m	27.324m#
15)	B Endosulfa...	6.826	5.984	27834165	30568241	15.400m	22.441m#
16)	A 4,4'-DDD	6.688	5.808	37688100	11977018	25.582m	10.484m#
17)	MA 4,4'-DDT	7.030	6.060	166.3E6	152.9E6	118.447	127.359m

(f)=RT Delta > 1/2 Window (#)=Amounts differ by > 25% (m)=manual int.

Data Path : Z:\pestpcbsrv\HPCHEM1\ECD_L\Data\PL052824\
 Data File : PL089786.D
 Signal(s) : Signal #1: ECD1A.ch Signal #2: ECD2B.ch
 Acq On : 29 May 2024 02:54
 Operator : AR\AJ
 Sample : P2570-21
 Misc :
 ALS Vial : 28 Sample Multiplier: 1

Integration File signal 1: autoint1.e
 Integration File signal 2: autoint2.e
 Quant Time: May 29 07:46:45 2024
 Quant Method : Z:\pestpcbsrv\HPCHEM1\ECD_L\methods\PL051724CLP.M
 Quant Title : GC Extractables
 QLast Update : Fri May 17 15:59:18 2024
 Response via : Initial Calibration
 Integrator: ChemStation

Volume Inj. : 1 µl
 Signal #1 Phase : ZB-MR2 Signal #2 Phase: ZB-MR1
 Signal #1 Info : 30M x 0.32mm x0.2 Signal #2 Info : 30M x 0.32mm x 0.50µm



Instrument : ECD_L
 Client/Sampled : BH653
 Manual Integrations APPROVED
 Reviewed By : Abul Mirza 06/03/2024
 Supervised By : Ankita Jodhani 06/03/2024