

Data Path : Z:\pestpcbsrv\HPCHEM1\ECD_L\Data\PL052921\
 Data File : PL066951.D
 Signal(s) : Signal #1: ECD1A.ch Signal #2: ECD2B.ch
 Acq On : 28 May 2021 13:38
 Operator : AR\AJ
 Sample : TOXAPHENE358
 Misc :
 ALS Vial : 4 Sample Multiplier: 1

Instrument :
 ECD_L
 ClientSampled :

Integration File signal 1: autoint1.e
 Integration File signal 2: autoint2.e
 Quant Time: May 31 06:09:58 2021
 Quant Method : Z:\pestpcbsrv\HPCHEM1\ECD_L\methods\PL052721CLP.M
 Quant Title : GC Extractables
 QLast Update : Thu May 27 02:30:58 2021
 Response via : Initial Calibration
 Integrator: ChemStation

Volume Inj. : 1 µl
 Signal #1 Phase : ZB-MR2 Signal #2 Phase: ZB-MR1
 Signal #1 Info : 30M x 0.32mm x0.2 Signal #2 Info : 30M x 0.32mm x 0.50µm

Compound	RT#1	RT#2	Resp#1	Resp#2	ng/ml	ng/ml

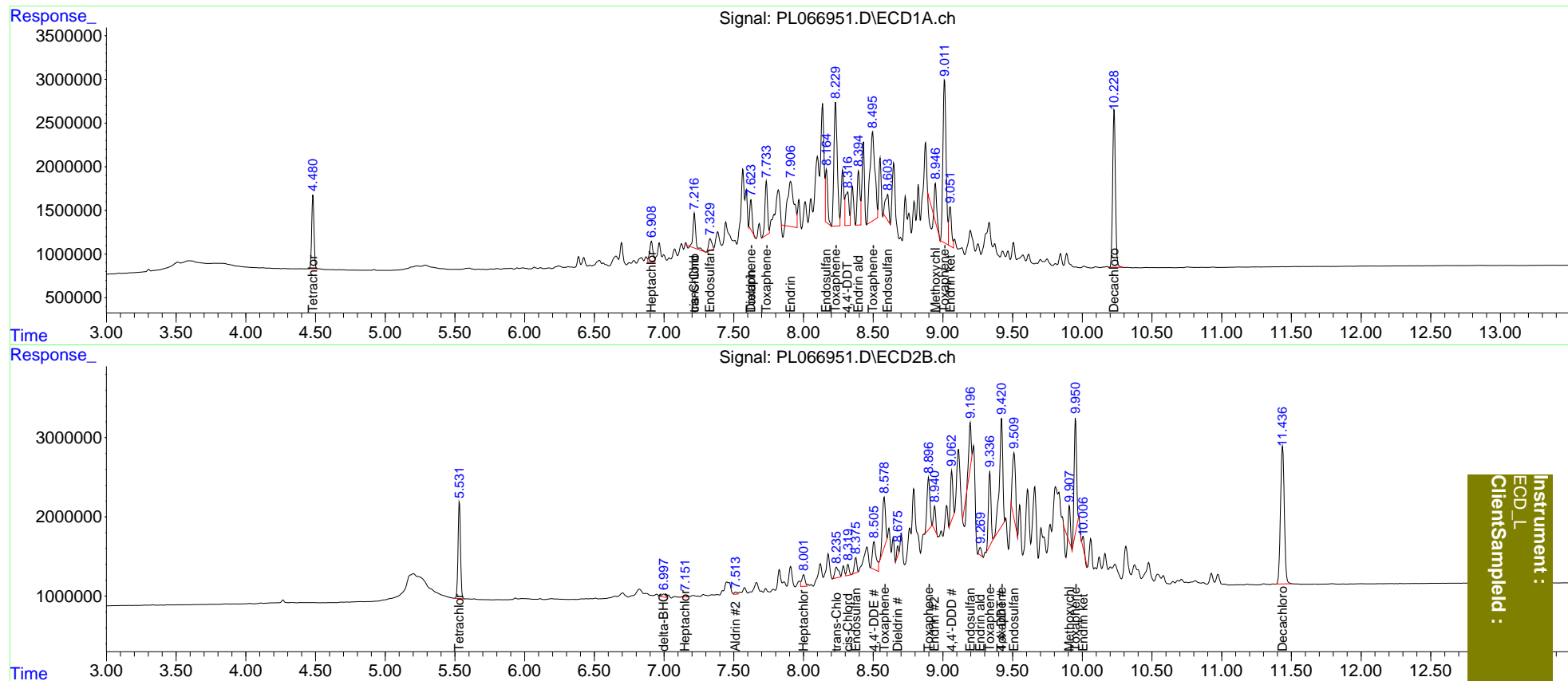
System Monitoring Compounds						
1) SA Tetrachlo...	4.482	5.532	9493737	14956389	17.790	16.914
27) SA Decachlor...	10.229	11.437	25120240	32717689	37.462	35.836
Target Compounds						
4) MA Heptachlor	0.000	7.152	0	405966	N.D.	0.409
5) MB Aldrin	0.000	7.514	0	390498	N.D.	0.410
7) B delta-BHC	0.000	6.998f	0	715205	N.D.	0.647
8) B Heptachlo...	6.910	8.002	3855881	2411261	5.942	2.620 #
9) A Endosulfan I	7.331	8.376	2133088	2337161	3.377	2.839
10) B trans-Chl...	7.218	8.237	5319446	2537732	7.761	2.748 #
11) B cis-Chlor...	7.218f	8.320	5319446	1643311	7.779	1.807 #
12) B 4,4'-DDE	0.000	8.506	0	6462771	N.D.	7.694
13) MA Dieldrin	7.623	8.677	3911629	932148	5.762	1.063 #
14) MA Endrin	7.908	8.942	14997872	3236582	24.372	4.464 #
15) B Endosulfa...	8.165	9.197f	6881625	5238745	11.459	7.189 #
16) A 4,4'-DDD	8.053	9.064	-575333	7145856	N.D.	9.644
17) MA 4,4'-DDT	8.317	9.421	7078350	23105246	13.590	35.139 #
18) B Endrin al...	8.395	9.268	8326147	1183529	16.396	1.806 #
19) B Endosulfa...	8.604	9.511	5108076	13109061	8.936	17.810 #
20) A Methoxychlor	8.946f	9.908f	2574502	1665259	8.720	4.478 #
21) B Endrin ke...	9.052f	10.006	6073748	1390578	8.972	1.686 #
22) Toxaphene-1	7.623	8.580	3911629	9424838	1387.234	1801.461 #
23) Toxaphene-2	7.734	8.898	7891230	9586571	2069.687	1742.322
24) Toxaphene-3	8.230	9.337	23413156	11873571	2116.484	1813.906
25) Toxaphene-4	8.496	9.421	25234626	23105246	2182.547	1763.565
26) Toxaphene-5	9.012	9.952	29967176	18101251	2304.730	1716.858 #

(f)=RT Delta > 1/2 Window (#)=Amounts differ by > 25% (m)=manual int.

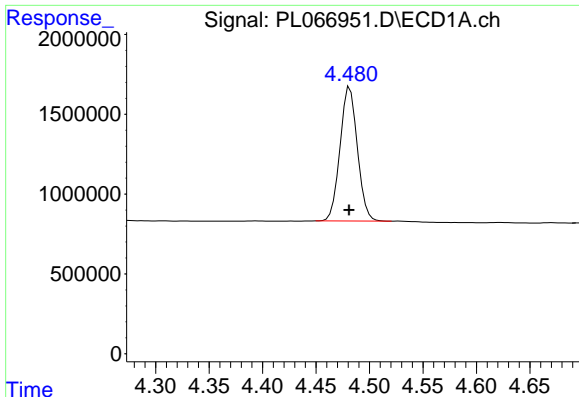
Data Path : Z:\pestpcbsrv\HPCHEM1\ECD_L\Data\PL052921\
 Data File : PL066951.D
 Signal(s) : Signal #1: ECD1A.ch Signal #2: ECD2B.ch
 Acq On : 28 May 2021 13:38
 Operator : AR\AJ
 Sample : TOXAPHENE358
 Misc :
 ALS Vial : 4 Sample Multiplier: 1

Integration File signal 1: autoint1.e
 Integration File signal 2: autoint2.e
 Quant Time: May 31 06:09:58 2021
 Quant Method : Z:\pestpcbsrv\HPCHEM1\ECD_L\methods\PL052721CLP.M
 Quant Title : GC Extractables
 QLast Update : Thu May 27 02:30:58 2021
 Response via : Initial Calibration
 Integrator: ChemStation

Volume Inj. : 1 µl
 Signal #1 Phase : ZB-MR2 Signal #2 Phase: ZB-MR1
 Signal #1 Info : 30M x 0.32mm x0.2 Signal #2 Info : 30M x 0.32mm x 0.50µm

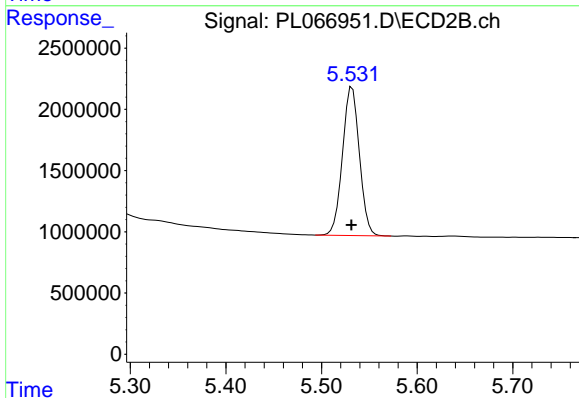


Instrument :
 ECD_L
 ClientSampleId :

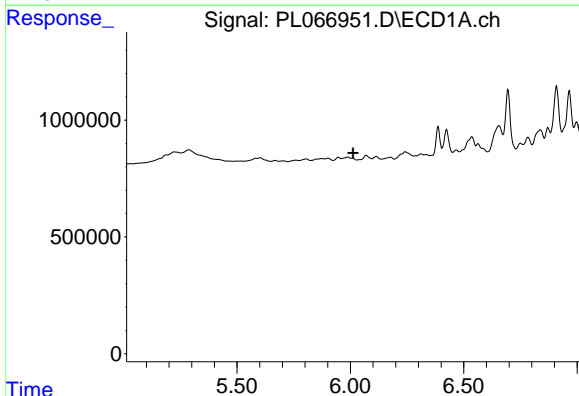


#1 Tetrachloro-m-xylene
 R.T.: 4.482 min
 Delta R.T.: 0.000 min
 Response: 9493737
 Conc: 17.79 ng/ml

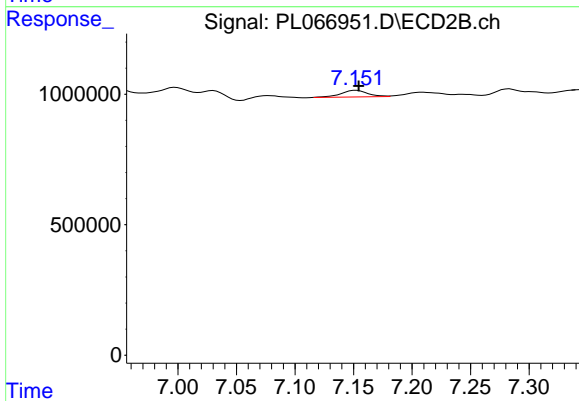
Instrument :
 ECD_L
 ClientSampled :



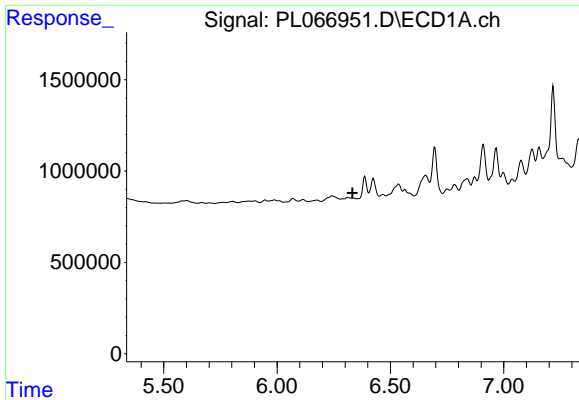
#1 Tetrachloro-m-xylene
 R.T.: 5.532 min
 Delta R.T.: 0.000 min
 Response: 14956389
 Conc: 16.91 ng/ml



#4 Heptachlor
 R.T.: 0.000 min
 Exp R.T. : 6.012 min
 Response: 0
 Conc: N.D.

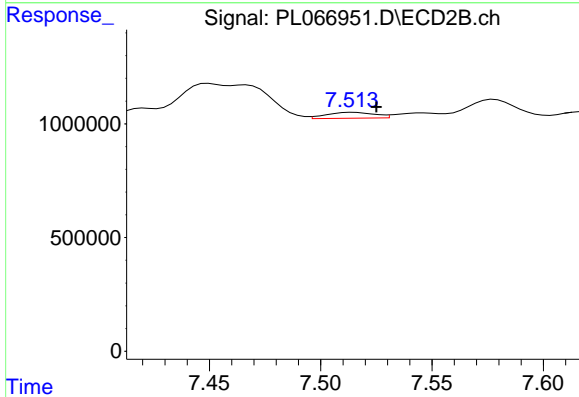


#4 Heptachlor
 R.T.: 7.152 min
 Delta R.T.: -0.002 min
 Response: 405966
 Conc: 0.41 ng/ml

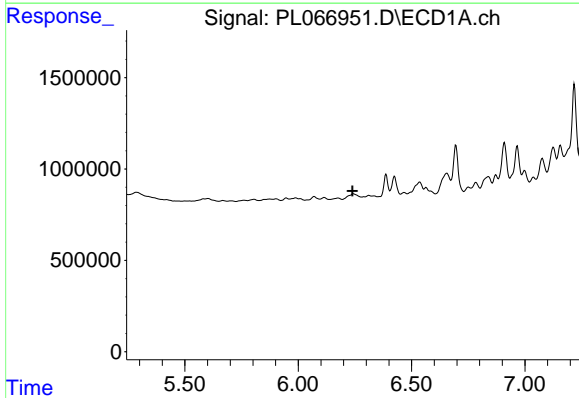


#5 Aldrin
 R.T.: 0.000 min
 Exp R.T.: 6.333 min
 Response: 0
 Conc: N.D.

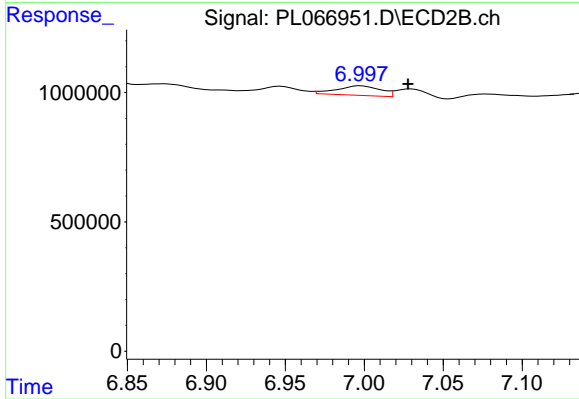
Instrument :
 ECD_L
 ClientSampled :



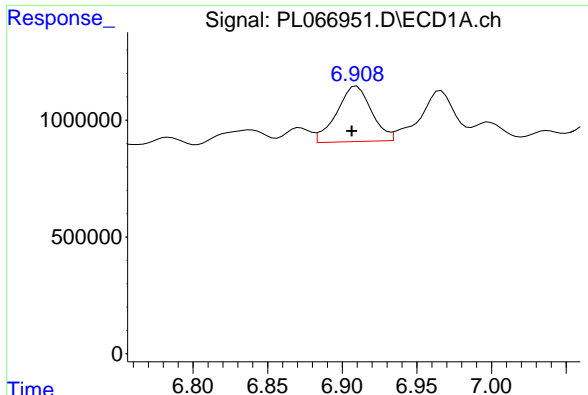
#5 Aldrin
 R.T.: 7.514 min
 Delta R.T.: -0.011 min
 Response: 390498
 Conc: 0.41 ng/ml



#7 delta-BHC
 R.T.: 0.000 min
 Exp R.T.: 6.240 min
 Response: 0
 Conc: N.D.



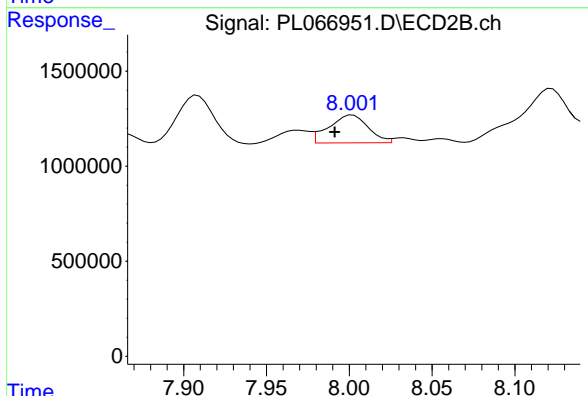
#7 delta-BHC
 R.T.: 6.998 min
 Delta R.T.: -0.030 min
 Response: 715205
 Conc: 0.65 ng/ml



#8 Heptachlor epoxide

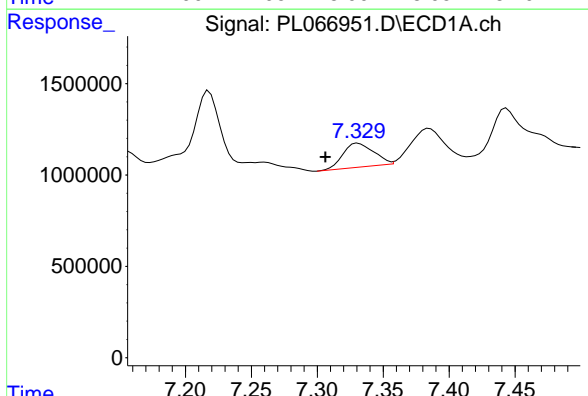
R.T.: 6.910 min
 Delta R.T.: 0.003 min
 Response: 3855881
 Conc: 5.94 ng/ml

Instrument :
 ECD_L
 ClientSampled :



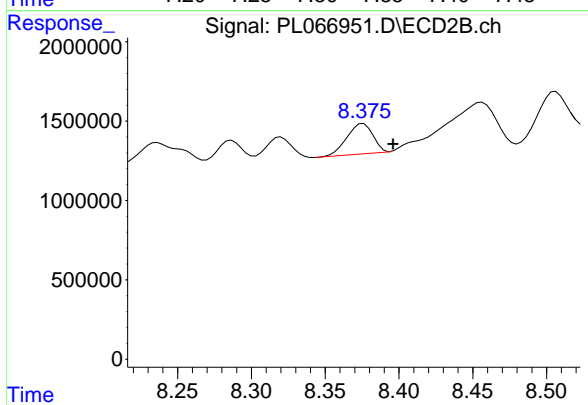
#8 Heptachlor epoxide

R.T.: 8.002 min
 Delta R.T.: 0.011 min
 Response: 2411261
 Conc: 2.62 ng/ml



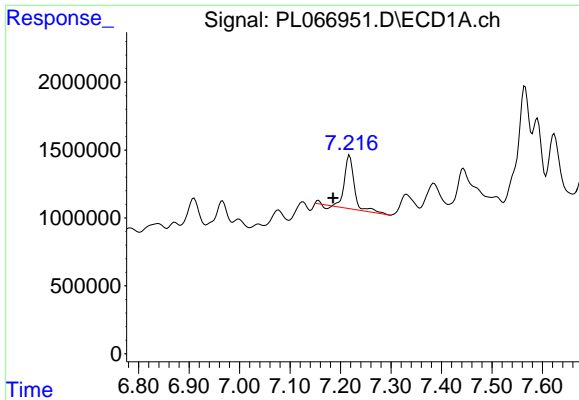
#9 Endosulfan I

R.T.: 7.331 min
 Delta R.T.: 0.025 min
 Response: 2133088
 Conc: 3.38 ng/ml



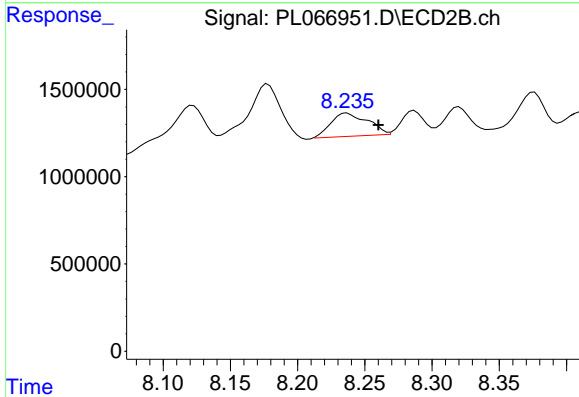
#9 Endosulfan I

R.T.: 8.376 min
 Delta R.T.: -0.020 min
 Response: 2337161
 Conc: 2.84 ng/ml

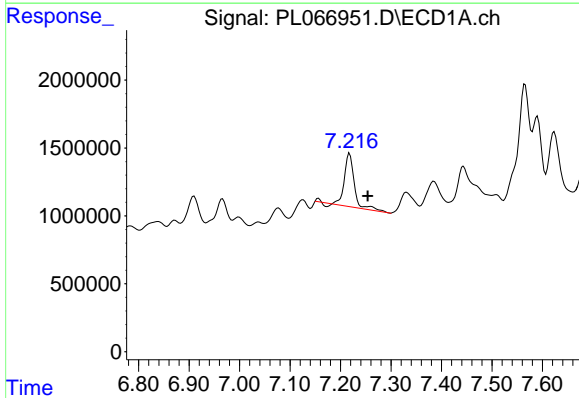


#10 trans-Chlordane
 R.T.: 7.218 min
 Delta R.T.: 0.032 min
 Response: 5319446
 Conc: 7.76 ng/ml

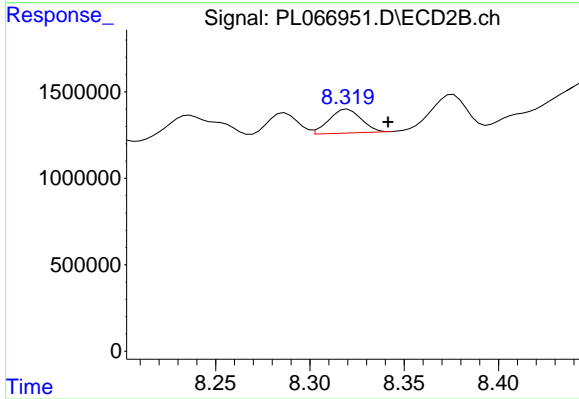
Instrument :
 ECD_L
 ClientSampled :



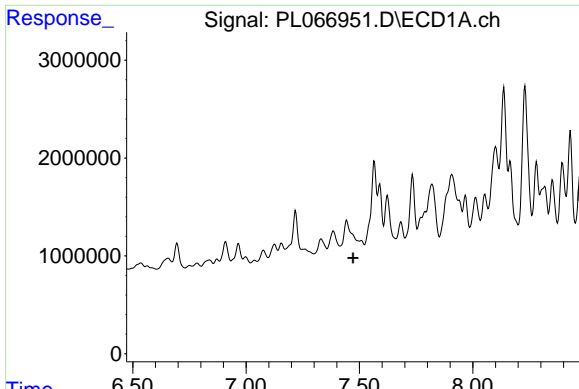
#10 trans-Chlordane
 R.T.: 8.237 min
 Delta R.T.: -0.024 min
 Response: 2537732
 Conc: 2.75 ng/ml



#11 cis-Chlordane
 R.T.: 7.218 min
 Delta R.T.: -0.036 min
 Response: 5319446
 Conc: 7.78 ng/ml

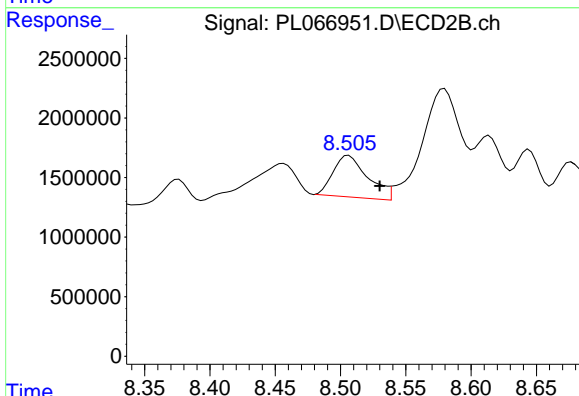


#11 cis-Chlordane
 R.T.: 8.320 min
 Delta R.T.: -0.021 min
 Response: 1643311
 Conc: 1.81 ng/ml

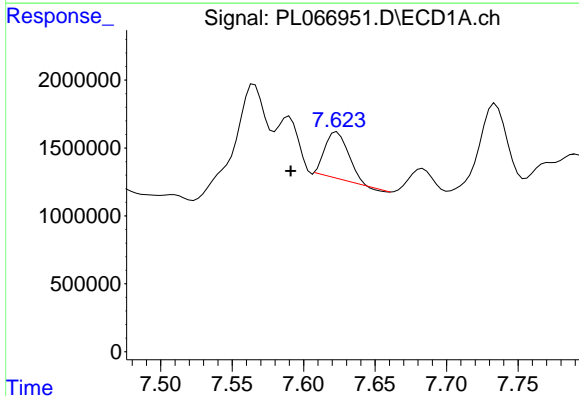


#12 4,4'-DDE
 R.T.: 0.000 min
 Exp R.T.: 7.472 min
 Response: 0
 Conc: N.D.

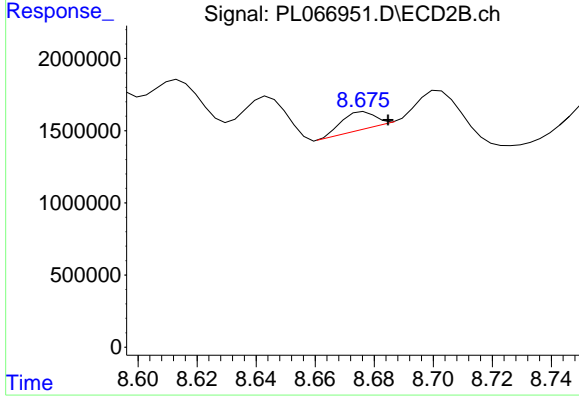
Instrument :
 ECD_L
 ClientSampled :



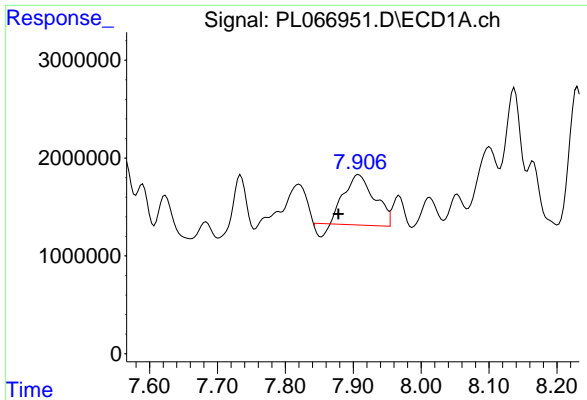
#12 4,4'-DDE
 R.T.: 8.506 min
 Delta R.T.: -0.024 min
 Response: 6462771
 Conc: 7.69 ng/ml



#13 Dieldrin
 R.T.: 7.623 min
 Delta R.T.: 0.033 min
 Response: 3911629
 Conc: 5.76 ng/ml

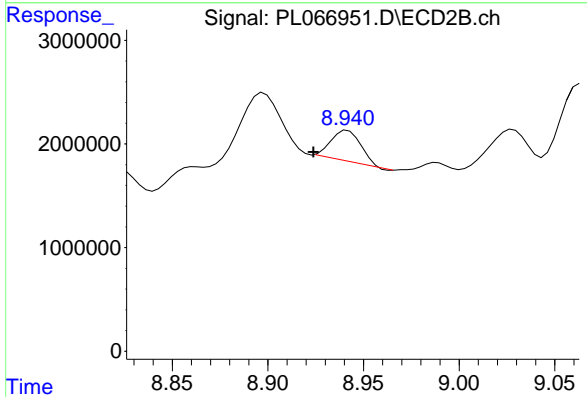


#13 Dieldrin
 R.T.: 8.677 min
 Delta R.T.: -0.008 min
 Response: 932148
 Conc: 1.06 ng/ml

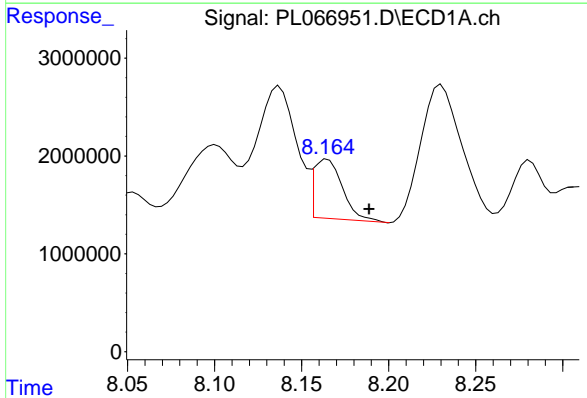


#14 Endrin
 R.T.: 7.908 min
 Delta R.T.: 0.030 min
 Response: 14997872
 Conc: 24.37 ng/ml

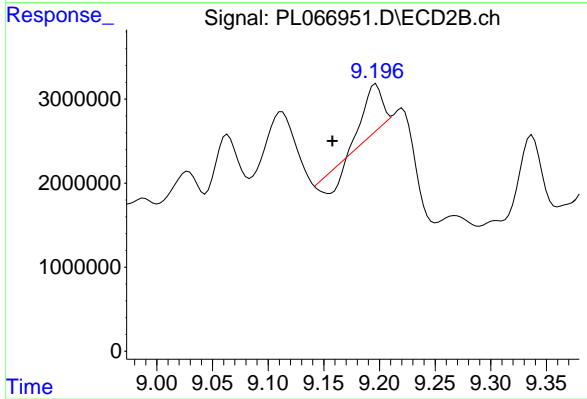
Instrument :
 ECD_L
 ClientSampleId :



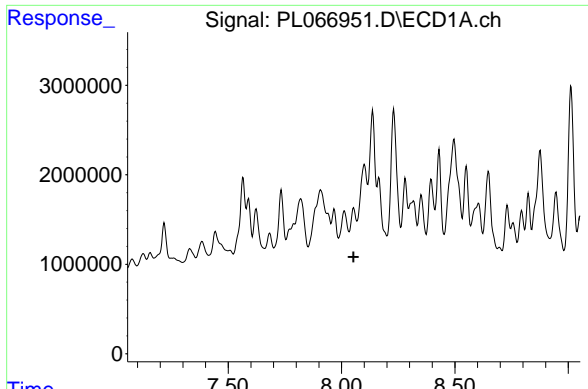
#14 Endrin
 R.T.: 8.942 min
 Delta R.T.: 0.018 min
 Response: 3236582
 Conc: 4.46 ng/ml



#15 Endosulfan II
 R.T.: 8.165 min
 Delta R.T.: -0.024 min
 Response: 6881625
 Conc: 11.46 ng/ml

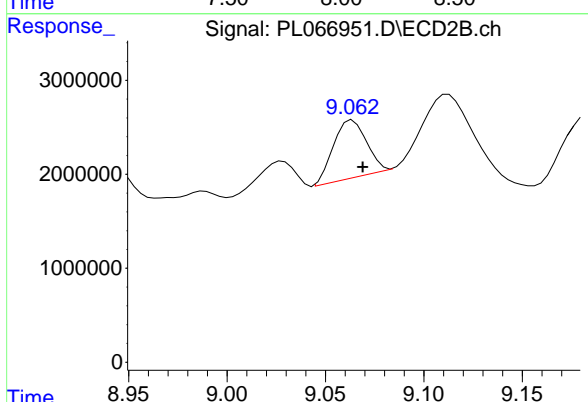


#15 Endosulfan II
 R.T.: 9.197 min
 Delta R.T.: 0.039 min
 Response: 5238745
 Conc: 7.19 ng/ml

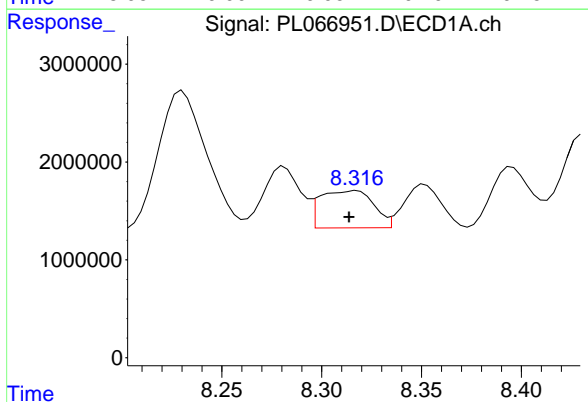


#16 4,4'-DDD
 R.T.: 8.053 min
 Delta R.T.: 0.000 min
 Response: -575333
 Conc: N.D.

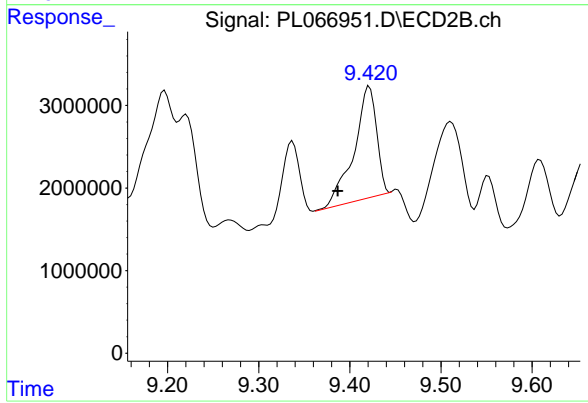
Instrument :
 ECD_L
 ClientSampled :



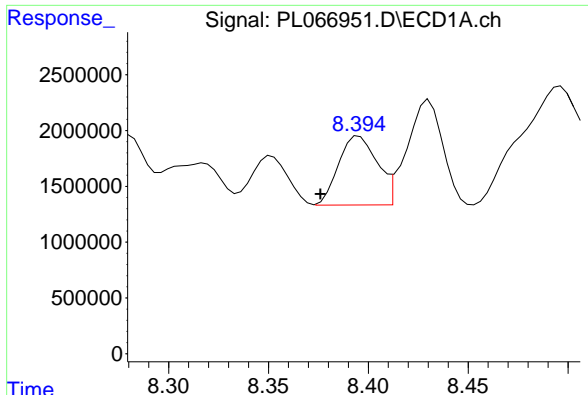
#16 4,4'-DDD
 R.T.: 9.064 min
 Delta R.T.: -0.005 min
 Response: 7145856
 Conc: 9.64 ng/ml



#17 4,4'-DDT
 R.T.: 8.317 min
 Delta R.T.: 0.003 min
 Response: 7078350
 Conc: 13.59 ng/ml



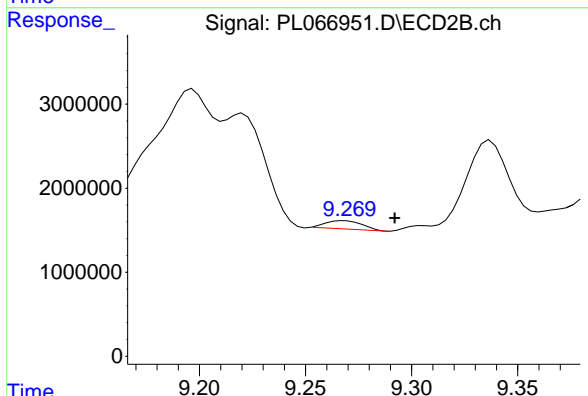
#17 4,4'-DDT
 R.T.: 9.421 min
 Delta R.T.: 0.035 min
 Response: 23105246
 Conc: 35.14 ng/ml



#18 Endrin aldehyde

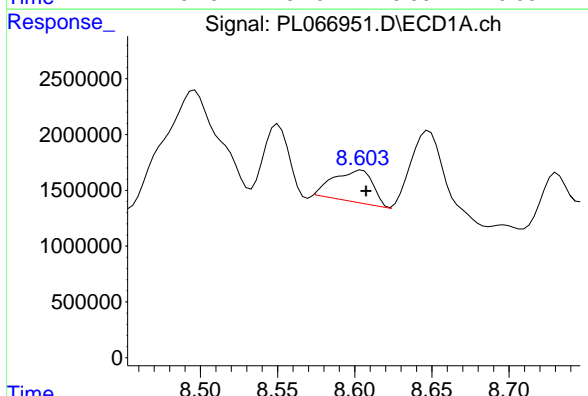
R.T.: 8.395 min
 Delta R.T.: 0.020 min
 Response: 8326147
 Conc: 16.40 ng/ml

Instrument :
 ECD_L
 ClientSampled :



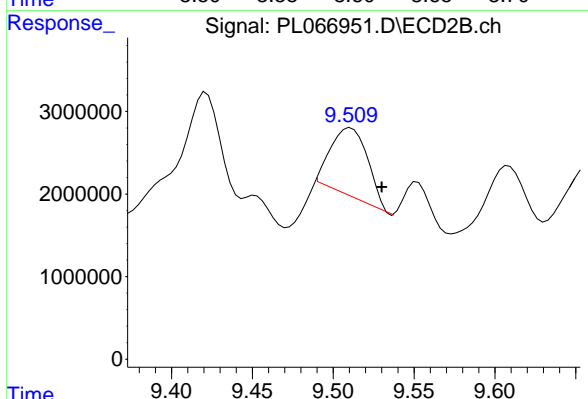
#18 Endrin aldehyde

R.T.: 9.268 min
 Delta R.T.: -0.024 min
 Response: 1183529
 Conc: 1.81 ng/ml



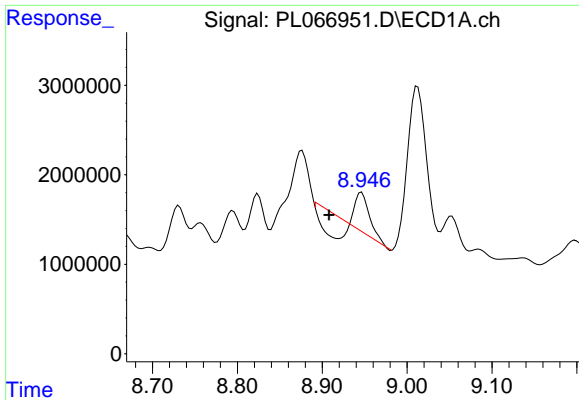
#19 Endosulfan Sulfate

R.T.: 8.604 min
 Delta R.T.: -0.003 min
 Response: 5108076
 Conc: 8.94 ng/ml



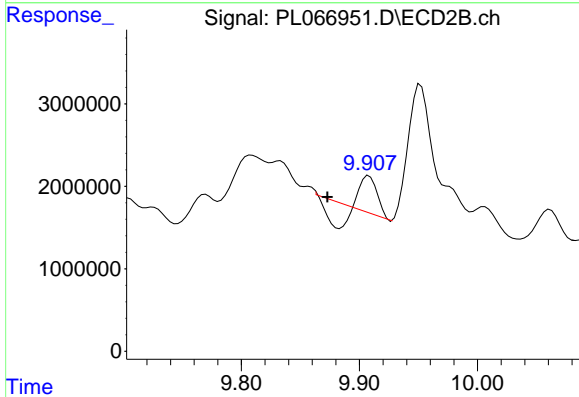
#19 Endosulfan Sulfate

R.T.: 9.511 min
 Delta R.T.: -0.019 min
 Response: 13109061
 Conc: 17.81 ng/ml

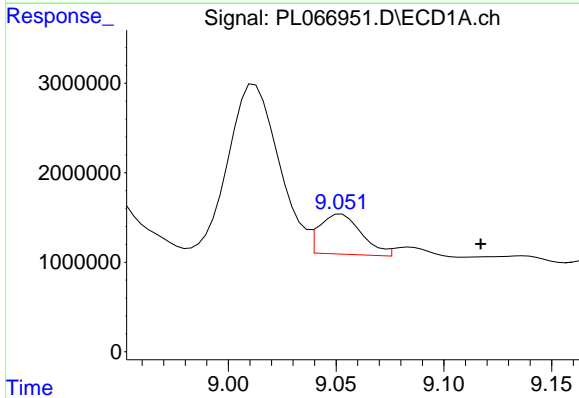


#20 Methoxychlor
 R.T.: 8.946 min
 Delta R.T.: 0.038 min
 Response: 2574502
 Conc: 8.72 ng/ml

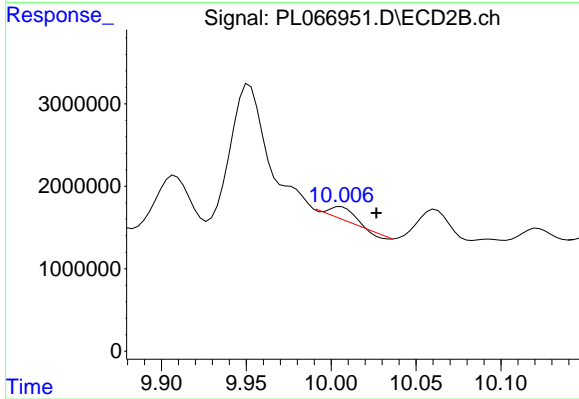
Instrument :
 ECD_L
 ClientSampled :



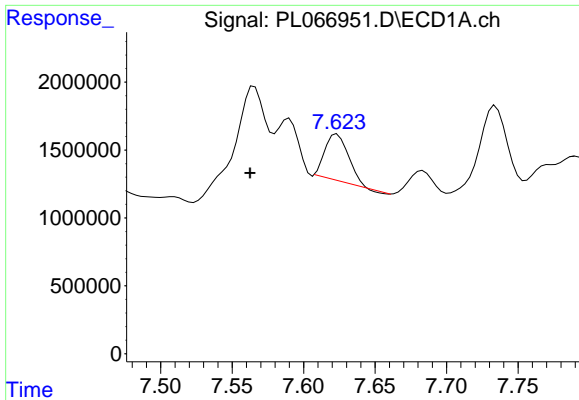
#20 Methoxychlor
 R.T.: 9.908 min
 Delta R.T.: 0.035 min
 Response: 1665259
 Conc: 4.48 ng/ml



#21 Endrin ketone
 R.T.: 9.052 min
 Delta R.T.: -0.065 min
 Response: 6073748
 Conc: 8.97 ng/ml

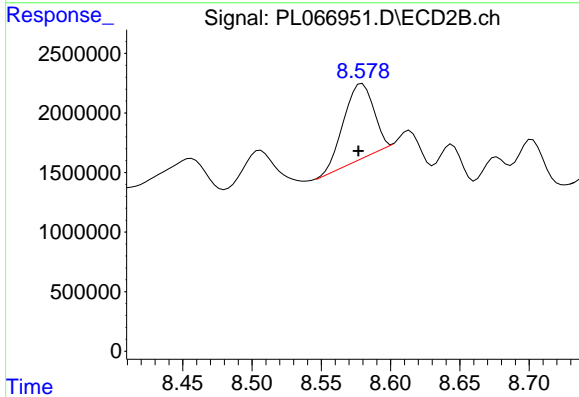


#21 Endrin ketone
 R.T.: 10.006 min
 Delta R.T.: -0.021 min
 Response: 1390578
 Conc: 1.69 ng/ml

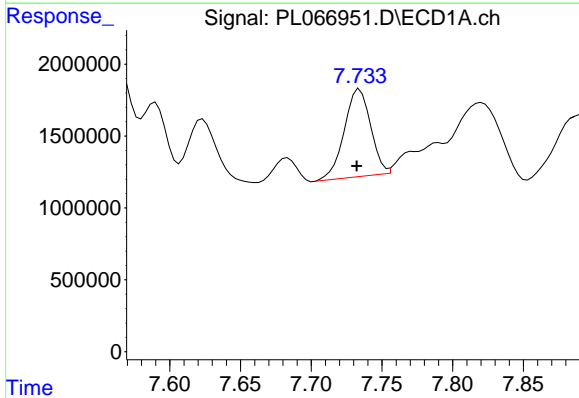


#22 Toxaphene-1
 R.T.: 7.623 min
 Delta R.T.: 0.061 min
 Response: 3911629
 Conc: 1387.23 ng/ml

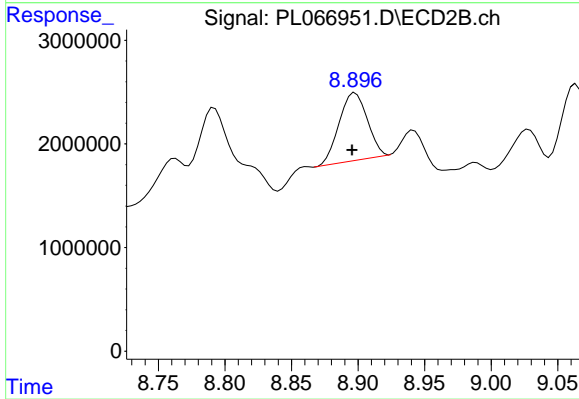
Instrument :
 ECD_L
 ClientSampleId :



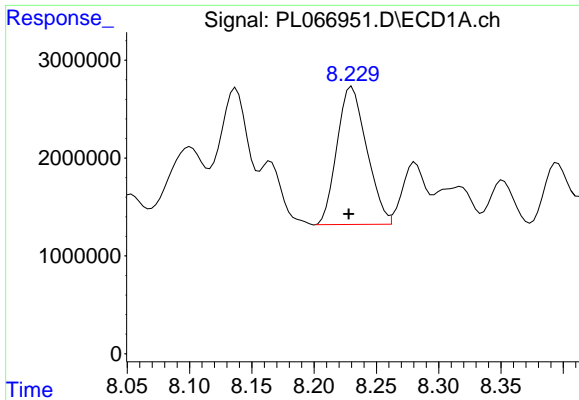
#22 Toxaphene-1
 R.T.: 8.580 min
 Delta R.T.: 0.003 min
 Response: 9424838
 Conc: 1801.46 ng/ml



#23 Toxaphene-2
 R.T.: 7.734 min
 Delta R.T.: 0.002 min
 Response: 7891230
 Conc: 2069.69 ng/ml



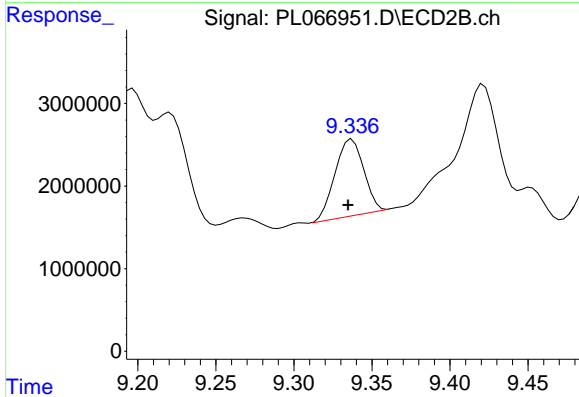
#23 Toxaphene-2
 R.T.: 8.898 min
 Delta R.T.: 0.002 min
 Response: 9586571
 Conc: 1742.32 ng/ml



#24 Toxaphene-3

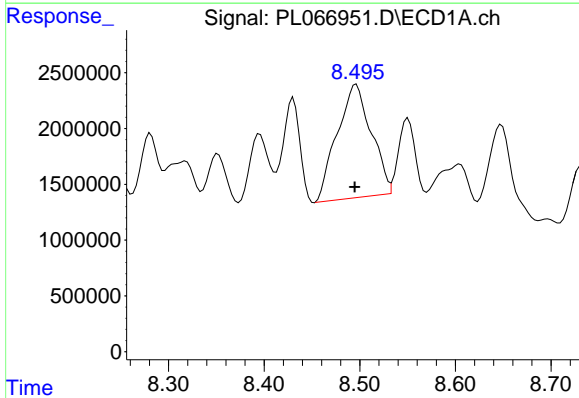
R.T.: 8.230 min
Delta R.T.: 0.003 min
Response: 23413156
Conc: 2116.48 ng/ml

Instrument :
ECD_L
ClientSampleId :



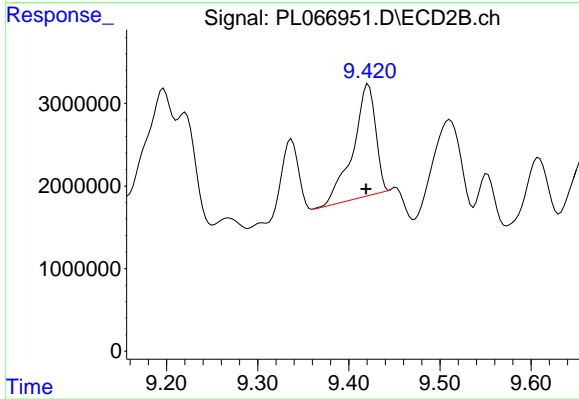
#24 Toxaphene-3

R.T.: 9.337 min
Delta R.T.: 0.003 min
Response: 11873571
Conc: 1813.91 ng/ml



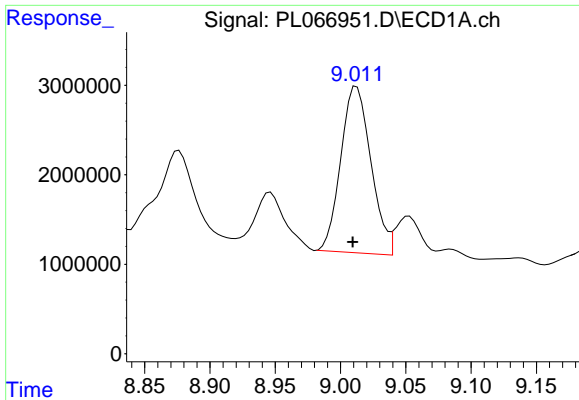
#25 Toxaphene-4

R.T.: 8.496 min
Delta R.T.: 0.001 min
Response: 25234626
Conc: 2182.55 ng/ml



#25 Toxaphene-4

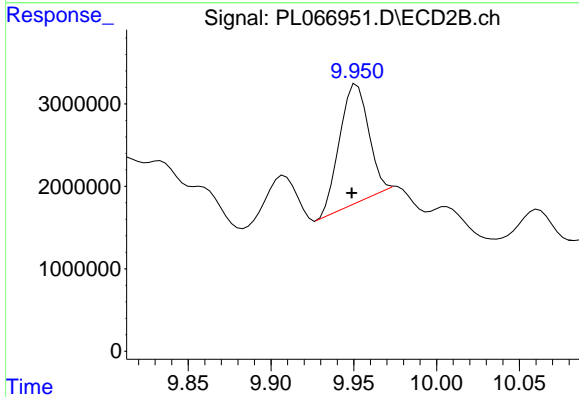
R.T.: 9.421 min
Delta R.T.: 0.003 min
Response: 23105246
Conc: 1763.57 ng/ml



#26 Toxaphene-5

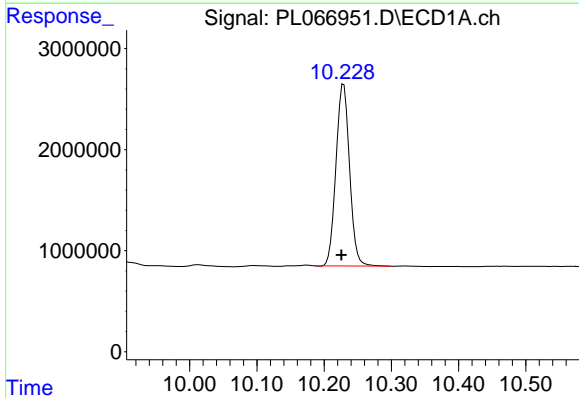
R.T.: 9.012 min
 Delta R.T.: 0.003 min
 Response: 29967176
 Conc: 2304.73 ng/ml

Instrument :
 ECD_L
 ClientSampleId :



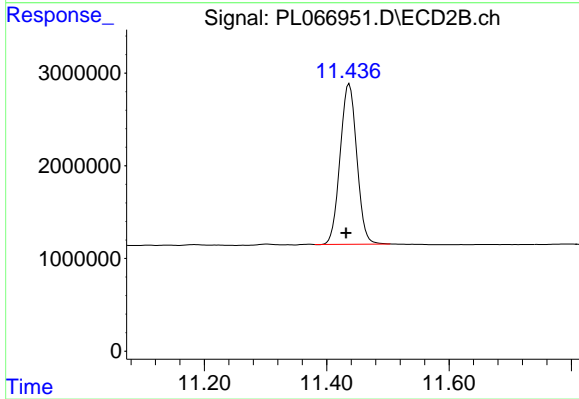
#26 Toxaphene-5

R.T.: 9.952 min
 Delta R.T.: 0.003 min
 Response: 18101251
 Conc: 1716.86 ng/ml



#27 Decachlorobiphenyl

R.T.: 10.229 min
 Delta R.T.: 0.003 min
 Response: 25120240
 Conc: 37.46 ng/ml



#27 Decachlorobiphenyl

R.T.: 11.437 min
 Delta R.T.: 0.005 min
 Response: 32717689
 Conc: 35.84 ng/ml