

Data Path : Z:\pestpcbsrv\HPCHEM1\ECD_L\Data\PL052921\
 Data File : PL066940.D
 Signal(s) : Signal #1: ECD1A.ch Signal #2: ECD2B.ch
 Acq On : 28 May 2021 09:55
 Operator : AR\AJ
 Sample : PEM64
 Misc :
 ALS Vial : 3 Sample Multiplier: 1

Instrument :
 ECD_L
 ClientSampled :
 PEM064

Manual Integrations
 APPROVED

Ankita
 6/1/2021 1:43:46 PM

Integration File signal 1: autoint1.e
 Integration File signal 2: autoint2.e
 Quant Time: May 31 06:06:46 2021
 Quant Method : Z:\pestpcbsrv\HPCHEM1\ECD_L\methods\PL052721CLP.M
 Quant Title : GC Extractables
 QLast Update : Thu May 27 02:30:58 2021
 Response via : Initial Calibration
 Integrator: ChemStation

Volume Inj. : 1 µl
 Signal #1 Phase : ZB-MR2 Signal #2 Phase: ZB-MR1
 Signal #1 Info : 30M x 0.32mm x0.2 Signal #2 Info : 30M x 0.32mm x 0.50µm

Compound	RT#1	RT#2	Resp#1	Resp#2	ng/ml	ng/ml

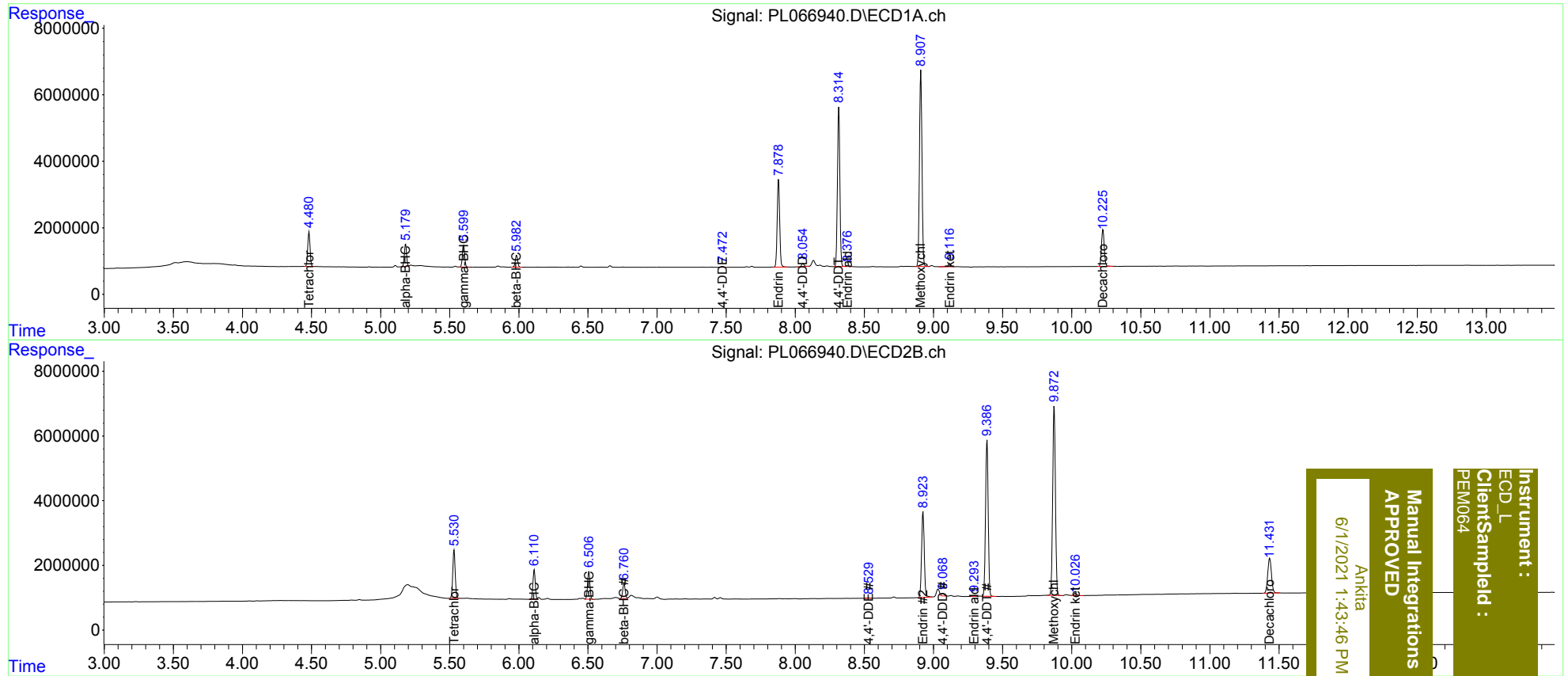
System Monitoring Compounds						
1) SA Tetrachlo...	4.482	5.531	11807741	18304697	22.126	20.701
27) SA Decachlor...	10.226	11.433	15458394	20016087	23.053	21.924
Target Compounds						
2) A alpha-BHC	5.179	6.111	7371477	10692985	9.112m	9.719
3) MA gamma-BHC...	5.601	6.506	7601793	10255667	10.759	9.632m
6) B beta-BHC	5.984	6.760	4380498	5671866	11.910	8.869m#
12) B 4,4'-DDE	7.472	8.529	208248	200209	0.334m	0.238m#
14) MA Endrin	7.879	8.925	32814900	35278714	53.324	48.663
16) A 4,4'-DDD	8.055	9.068	1157048	1152147	2.150	1.555m#
17) MA 4,4'-DDT	8.315	9.387	57854724	63928839	111.081	97.226
18) B Endrin al...	8.376	9.295	319907	244534	0.630m	0.373 #
20) A Methoxychlor	8.909	9.873	74906513	80827489	253.704	217.341
21) B Endrin ke...	9.118	10.028	1302357	875402	1.924	1.061 #

(f)=RT Delta > 1/2 Window (#)=Amounts differ by > 25% (m)=manual int.

Data Path : Z:\pestpcbsrv\HPCHEM1\ECD_L\Data\PL052921\
 Data File : PL066940.D
 Signal(s) : Signal #1: ECD1A.ch Signal #2: ECD2B.ch
 Acq On : 28 May 2021 09:55
 Operator : AR\AJ
 Sample : PEM64
 Misc :
 ALS Vial : 3 Sample Multiplier: 1

Integration File signal 1: autoint1.e
 Integration File signal 2: autoint2.e
 Quant Time: May 31 06:06:46 2021
 Quant Method : Z:\pestpcbsrv\HPCHEM1\ECD_L\methods\PL052721CLP.M
 Quant Title : GC Extractables
 QLast Update : Thu May 27 02:30:58 2021
 Response via : Initial Calibration
 Integrator: ChemStation

Volume Inj. : 1 µl
 Signal #1 Phase : ZB-MR2 Signal #2 Phase: ZB-MR1
 Signal #1 Info : 30M x 0.32mm x0.2 Signal #2 Info : 30M x 0.32mm x 0.50µm



Instrument : ECD_L
 Client Sample Id : PEM064
 Manual Integrations APPROVED
 Ankitia
 6/1/2021 1:43:46 PM