

Data Path : Z:\pestpcbsrv\HPCHEM1\ECD\_L\Data\PL053019\  
 Data File : PL049079.D  
 Signal(s) : Signal #1: ECD1A.ch Signal #2: ECD2B.ch  
 Acq On : 30 May 2019 10:39  
 Operator : SM\AJ  
 Sample : I.BLK  
 Misc :  
 ALS Vial : 2 Sample Multiplier: 1

Instrument :  
 ECD\_L  
 ClientSampleId :  
 I.BLK

Integration File signal 1: autoint1.e  
 Integration File signal 2: autoint2.e  
 Quant Time: May 31 05:02:31 2019  
 Quant Method : Z:\pestpcbsrv\HPCHEM1\ECD\_L\methods\PL053019.M  
 Quant Title : GC Extractables  
 QLast Update : Fri May 31 01:35:35 2019  
 Response via : Initial Calibration  
 Integrator: ChemStation

Volume Inj. : 1 µl  
 Signal #1 Phase : ZB-MR2 Signal #2 Phase: ZB-MR1  
 Signal #1 Info : 30M x 0.32mm x0.2 Signal #2 Info : 30M x 0.32mm x0.5µm

Compound	RT#1	RT#2	Resp#1	Resp#2	ng/ml	ng/ml
----------	------	------	--------	--------	-------	-------

-----  
 System Monitoring Compounds

1) SA Tetrachlo...	3.324	3.937	186.1E6	48859459	16.890	16.912
28) SA Decachlor...	7.993	8.973	220.1E6	59737369	17.313	17.887

Target Compounds  
 -----

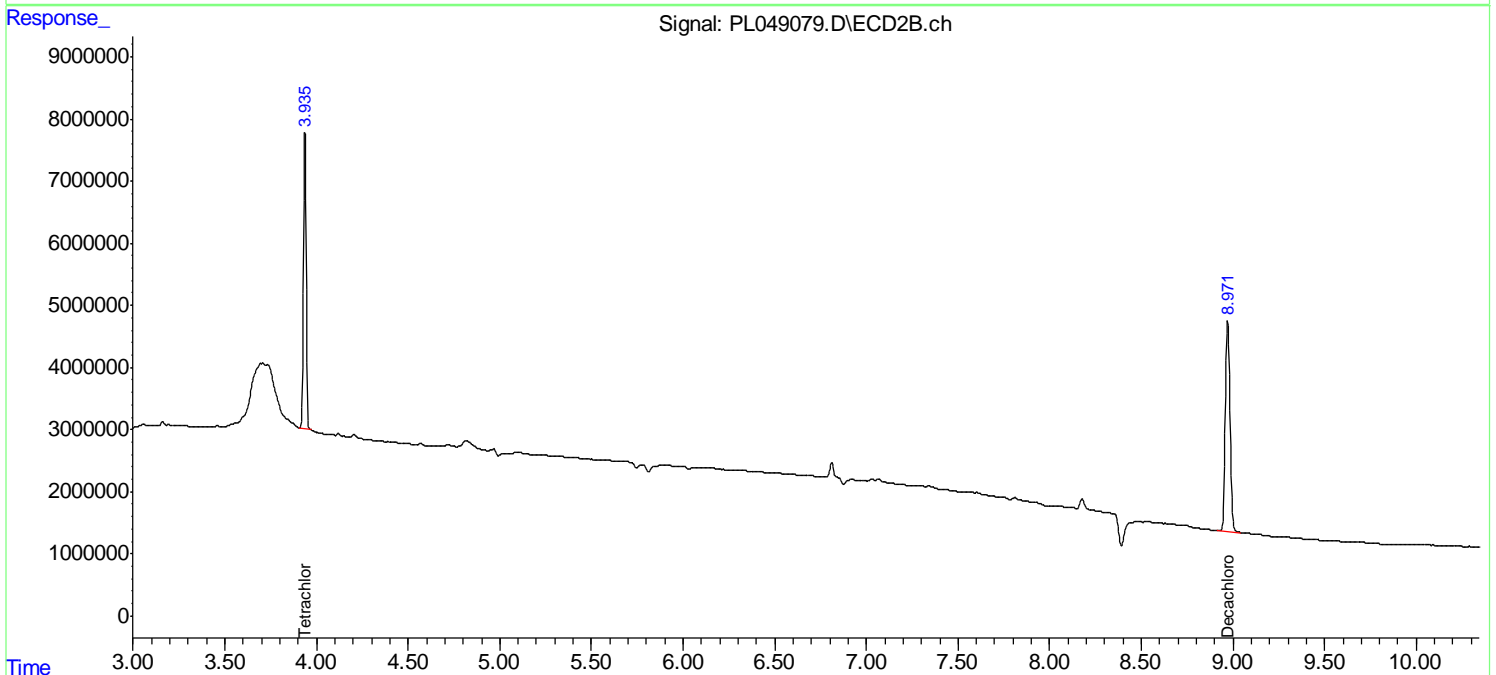
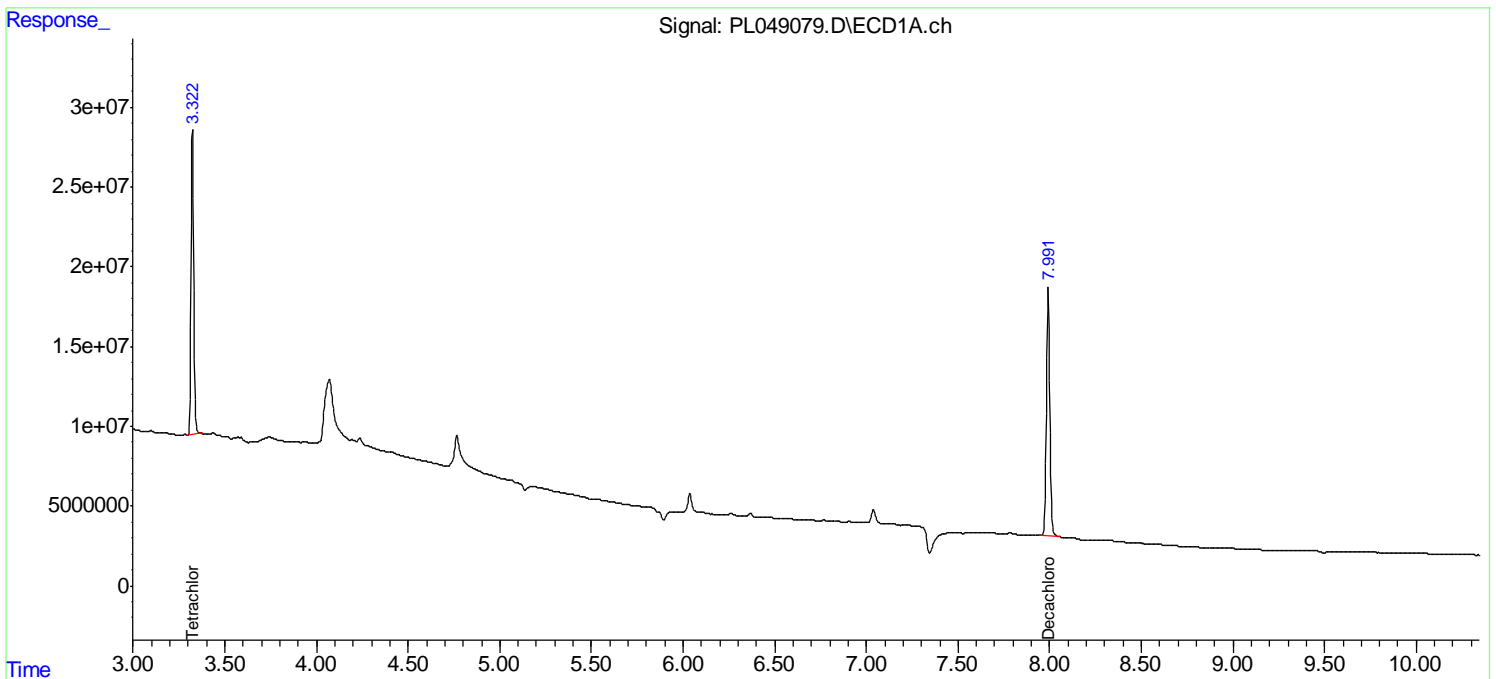
(f)=RT Delta > 1/2 Window (#)=Amounts differ by > 25% (m)=manual int.

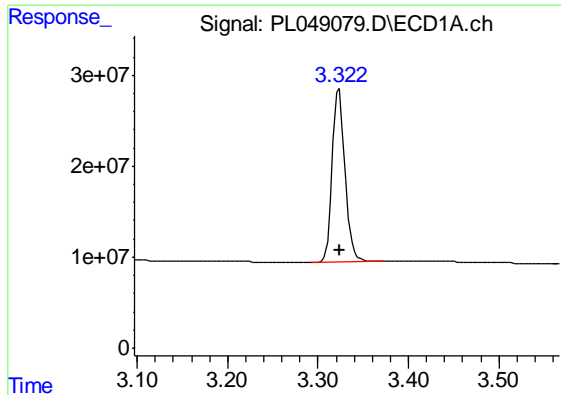
Data Path : Z:\pestpcbsrv\HPCHEM1\ECD\_L\Data\PL053019\  
 Data File : PL049079.D  
 Signal(s) : Signal #1: ECD1A.ch Signal #2: ECD2B.ch  
 Acq On : 30 May 2019 10:39  
 Operator : SM\AJ  
 Sample : I.BLK  
 Misc :  
 ALS Vial : 2 Sample Multiplier: 1

Instrument :  
 ECD\_L  
 ClientSampleId :  
 I.BLK

Integration File signal 1: autoint1.e  
 Integration File signal 2: autoint2.e  
 Quant Time: May 31 05:02:31 2019  
 Quant Method : Z:\pestpcbsrv\HPCHEM1\ECD\_L\methods\PL053019.M  
 Quant Title : GC Extractables  
 QLast Update : Fri May 31 01:35:35 2019  
 Response via : Initial Calibration  
 Integrator: ChemStation

Volume Inj. : 1 µl  
 Signal #1 Phase : ZB-MR2 Signal #2 Phase: ZB-MR1  
 Signal #1 Info : 30M x 0.32mm x0.2 Signal #2 Info : 30M x 0.32mm x0.5µm

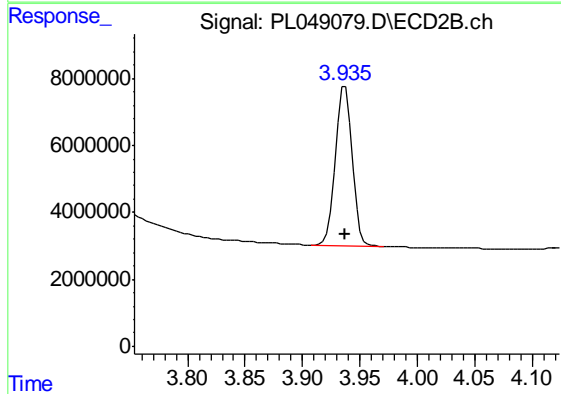




#1 Tetrachloro-m-xylene

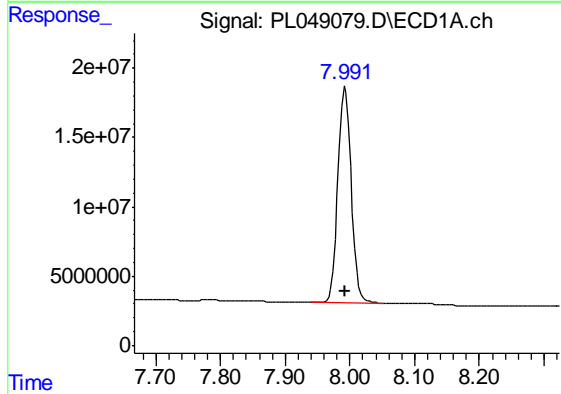
R.T.: 3.324 min  
 Delta R.T.: 0.000 min  
 Response: 186107198  
 Conc: 16.89 ng/ml

Instrument :  
 ECD\_L  
 ClientSampled :  
 I.BLK



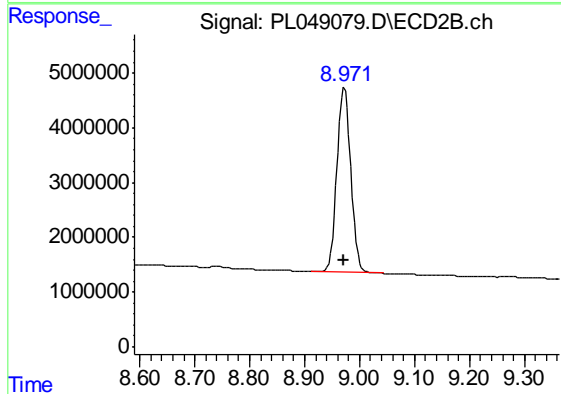
#1 Tetrachloro-m-xylene

R.T.: 3.937 min  
 Delta R.T.: 0.000 min  
 Response: 48859459  
 Conc: 16.91 ng/ml



#28 Decachlorobiphenyl

R.T.: 7.993 min  
 Delta R.T.: 0.000 min  
 Response: 220147949  
 Conc: 17.31 ng/ml



#28 Decachlorobiphenyl

R.T.: 8.973 min  
 Delta R.T.: 0.000 min  
 Response: 59737369  
 Conc: 17.89 ng/ml