

Data Path : Z:\pestpcbsrv\HPCHEM1\ECD_L\Data\PL053019\
 Data File : PL049089.D
 Signal(s) : Signal #1: ECD1A.ch Signal #2: ECD2B.ch
 Acq On : 30 May 2019 13:03
 Operator : SM\AJ
 Sample : PSTDICV050
 Misc :
 ALS Vial : 12 Sample Multiplier: 1

Instrument :
 ECD_L
 ClientSampleId :
 ICVPL053019

Integration File signal 1: autoint1.e
 Integration File signal 2: autoint2.e
 Quant Time: May 31 01:40:48 2019
 Quant Method : Z:\pestpcbsrv\HPCHEM1\ECD_L\methods\PL053019.M
 Quant Title : GC Extractables
 QLast Update : Fri May 31 01:35:35 2019
 Response via : Initial Calibration
 Integrator: ChemStation

Volume Inj. : 1 µl
 Signal #1 Phase : ZB-MR2 Signal #2 Phase: ZB-MR1
 Signal #1 Info : 30M x 0.32mm x0.2 Signal #2 Info : 30M x 0.32mm x0.5µm

	Compound	RT#1	RT#2	Resp#1	Resp#2	ng/ml	ng/ml

System Monitoring Compounds							
1)	SA Tetrachlo...	3.324	3.937	551.4E6	143.5E6	50.041	49.667
28)	SA Decachlor...	7.993	8.974	620.0E6	162.7E6	48.761	48.713
Target Compounds							
2)	A alpha-BHC	3.752	4.325	916.7E6	204.9E6	50.881	51.123
3)	MA gamma-BHC...	4.028	4.609	856.4E6	190.0E6	50.531	50.746
4)	MA Heptachlor	4.313	5.112	906.1E6	200.2E6	51.169	49.826
5)	MB Aldrin	4.552	5.415	876.3E6	185.7E6	51.322	50.473
6)	B beta-BHC	4.282	4.784	347.9E6	86113334	50.063	49.995
7)	B delta-BHC	4.476	4.998	833.8E6	162.7E6	51.595	53.034
8)	B Heptachlo...	4.988	5.801	781.8E6	165.4E6	52.716	50.600
9)	A Endosulfan I	5.319	6.157	738.6E6	160.2E6	50.468	49.734
10)	B gamma-Chl...	5.211	6.035	809.6E6	173.6E6	50.713	50.184
11)	B alpha-Chl...	5.267	6.108	785.1E6	172.7E6	50.257	49.782
12)	B 4,4'-DDE	5.435	6.267	788.7E6	165.1E6	50.422	50.283
13)	MA Dieldrin	5.558	6.413	789.3E6	168.2E6	51.617	50.145
14)	MA Endrin	5.811	6.631	726.9E6	148.2E6	50.394	49.668
15)	B Endosulfa...	6.086	6.842	663.2E6	146.9E6	50.225	48.417
16)	A 4,4'-DDD	5.946	6.757	609.0E6	131.6E6	51.174	50.021
17)	MA 4,4'-DDT	6.180	7.055	641.0E6	140.2E6	52.057	49.991
18)	B Endrin al...	6.253	6.965	546.3E6	127.0E6	49.919	49.233
19)	B Endosulfa...	6.465	7.188	652.4E6	149.9E6	50.250	49.301
20)	A Methoxychlor	6.725	7.515	325.4E6	81686491	50.732	49.273
21)	B Endrin ke...	6.946	7.657	702.2E6	152.2E6	51.280	47.834
22)	Mirex	7.120	8.107	517.3E6	125.2E6	49.094	48.213

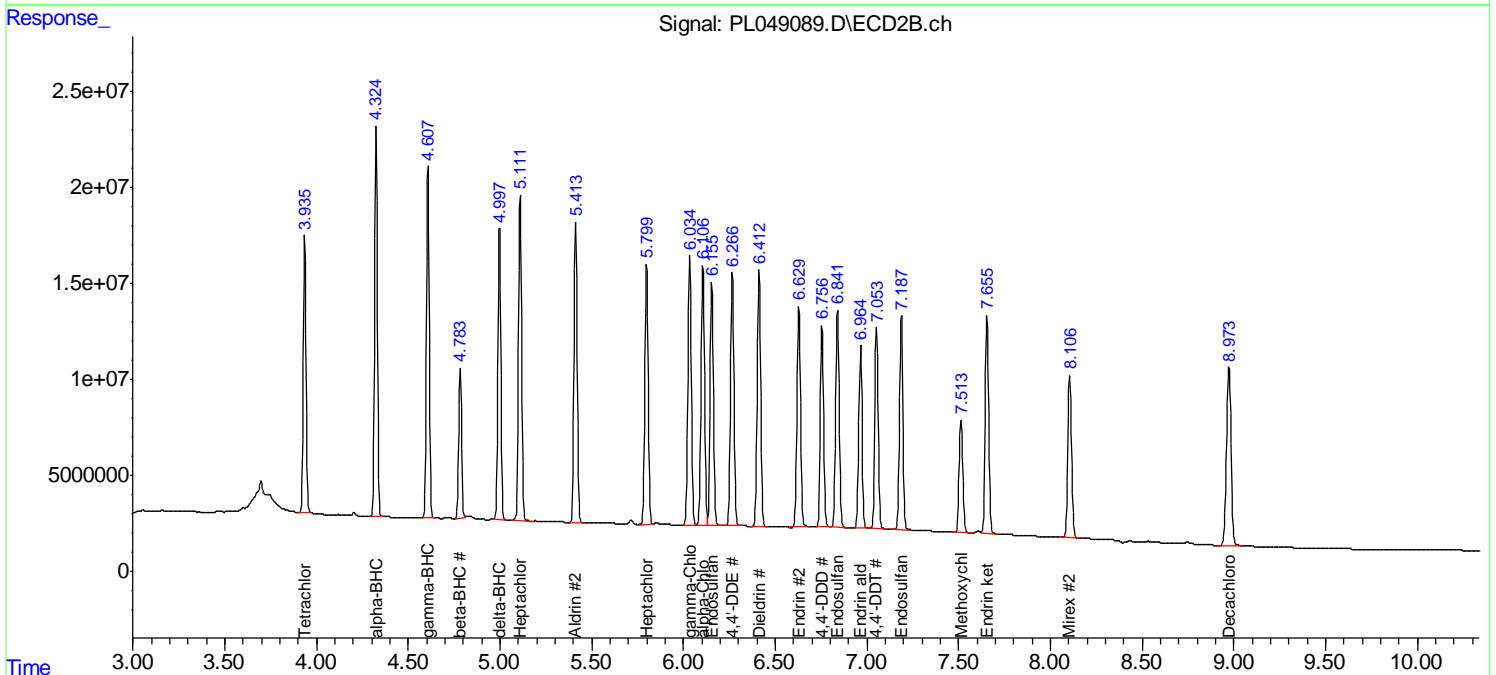
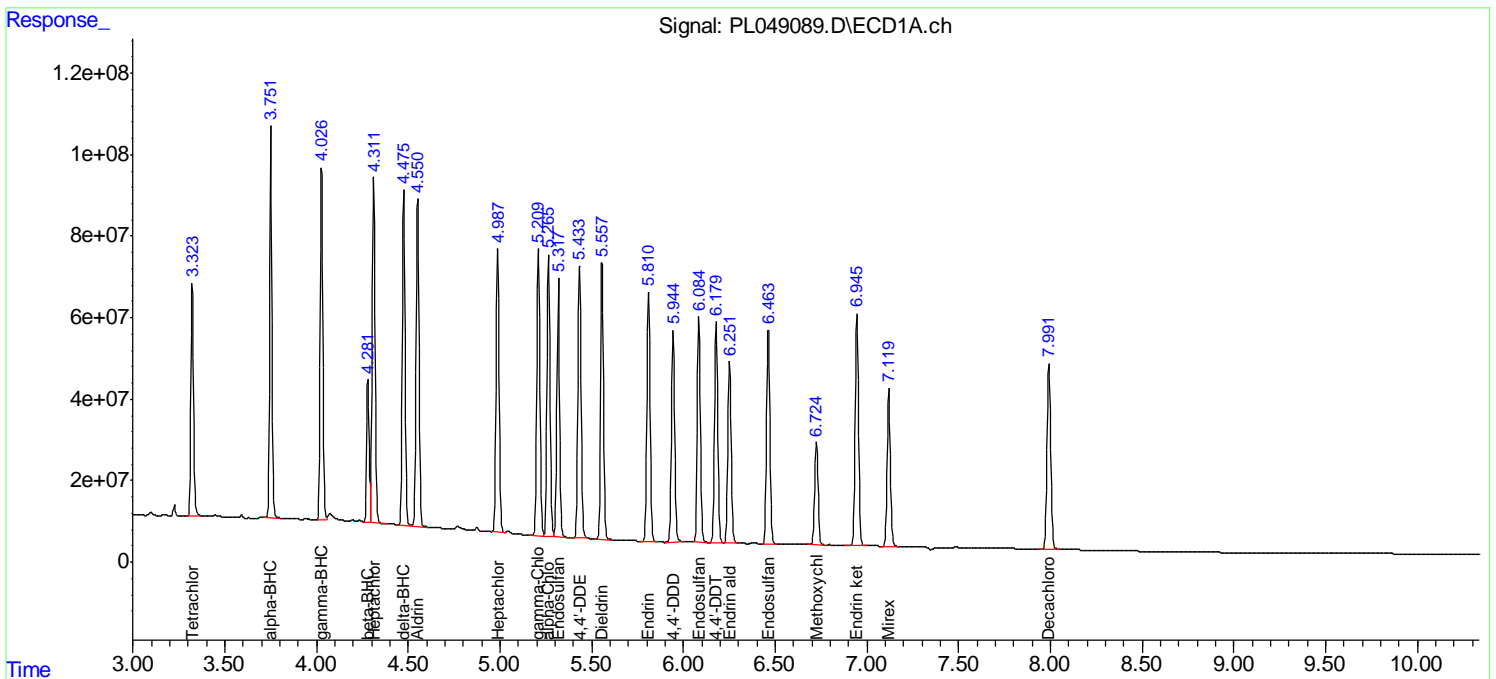
(f)=RT Delta > 1/2 Window (#)=Amounts differ by > 25% (m)=manual int.

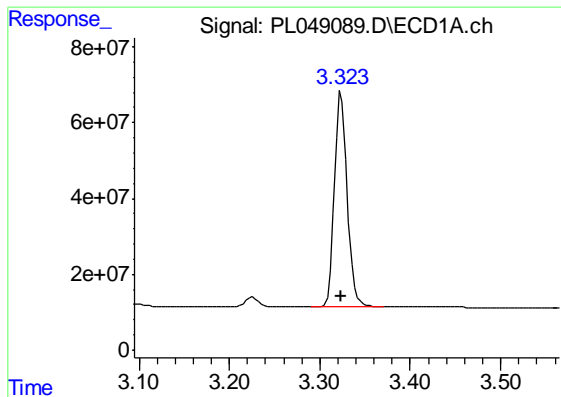
Data Path : Z:\pestpcbsrv\HPCHEM1\ECD_L\Data\PL053019\
 Data File : PL049089.D
 Signal(s) : Signal #1: ECD1A.ch Signal #2: ECD2B.ch
 Acq On : 30 May 2019 13:03
 Operator : SM\AJ
 Sample : PSTDICV050
 Misc :
 ALS Vial : 12 Sample Multiplier: 1

Instrument :
 ECD_L
 Client Sampled :
 ICVPL053019

Integration File signal 1: autoint1.e
 Integration File signal 2: autoint2.e
 Quant Time: May 31 01:40:48 2019
 Quant Method : Z:\pestpcbsrv\HPCHEM1\ECD_L\methods\PL053019.M
 Quant Title : GC Extractables
 QLast Update : Fri May 31 01:35:35 2019
 Response via : Initial Calibration
 Integrator: ChemStation

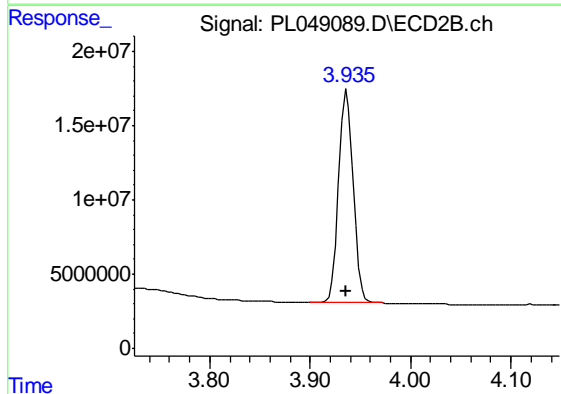
Volume Inj. : 1 µl
 Signal #1 Phase : ZB-MR2 Signal #2 Phase: ZB-MR1
 Signal #1 Info : 30M x 0.32mm x0.2 Signal #2 Info : 30M x 0.32mm x0.5µm



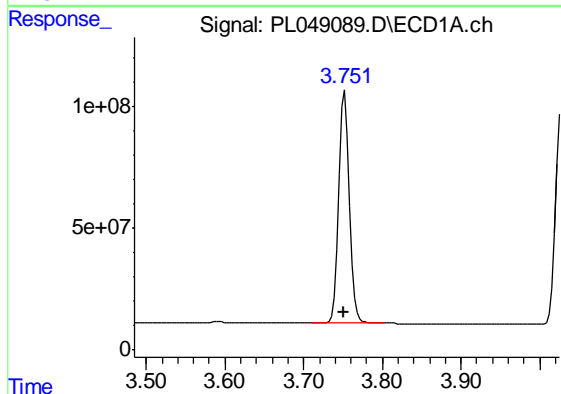


#1 Tetrachloro-m-xylene
 R.T.: 3.324 min
 Delta R.T.: 0.000 min
 Response: 551392017
 Conc: 50.04 ng/ml

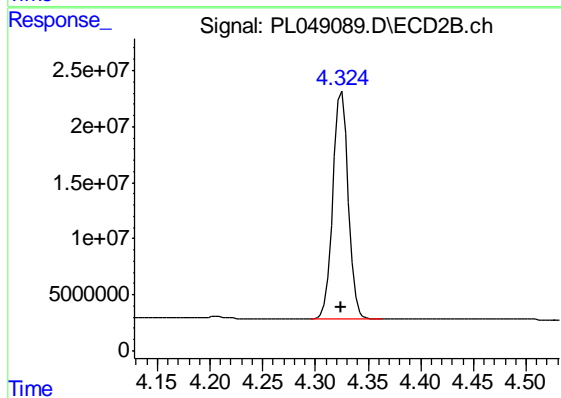
Instrument :
 ECD_L
 ClientSampleId :
 ICVPL053019



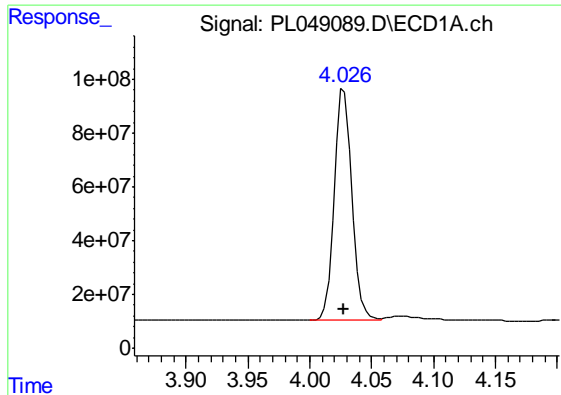
#1 Tetrachloro-m-xylene
 R.T.: 3.937 min
 Delta R.T.: 0.000 min
 Response: 143491118
 Conc: 49.67 ng/ml



#2 alpha-BHC
 R.T.: 3.752 min
 Delta R.T.: 0.000 min
 Response: 916700865
 Conc: 50.88 ng/ml



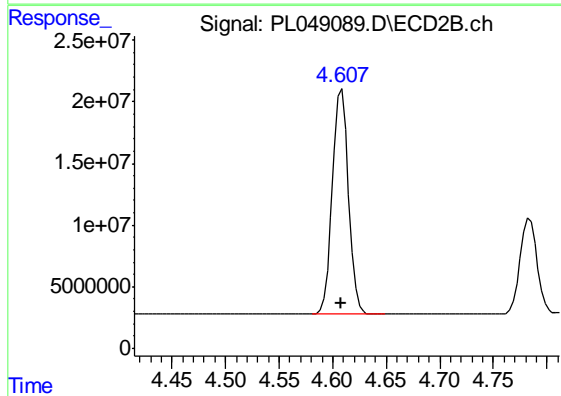
#2 alpha-BHC
 R.T.: 4.325 min
 Delta R.T.: 0.000 min
 Response: 204914373
 Conc: 51.12 ng/ml



#3 gamma-BHC (Lindane)

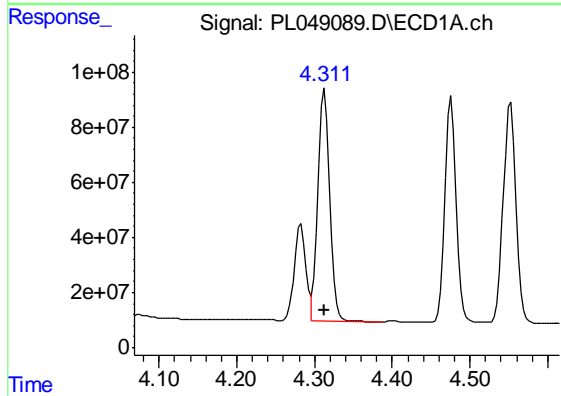
R.T.: 4.028 min
Delta R.T.: 0.000 min
Response: 856437196
Conc: 50.53 ng/ml

Instrument :
ECD_L
ClientSampleId :
ICVPL053019



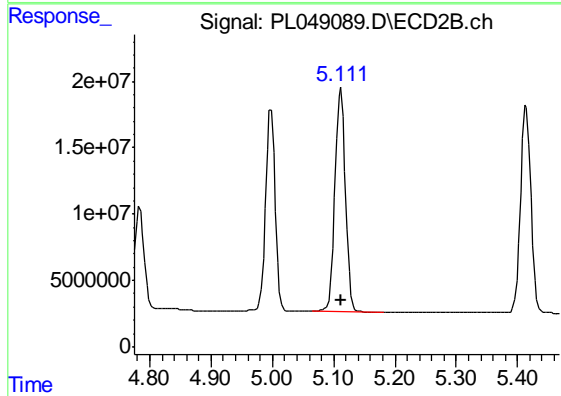
#3 gamma-BHC (Lindane)

R.T.: 4.609 min
Delta R.T.: 0.000 min
Response: 189973722
Conc: 50.75 ng/ml



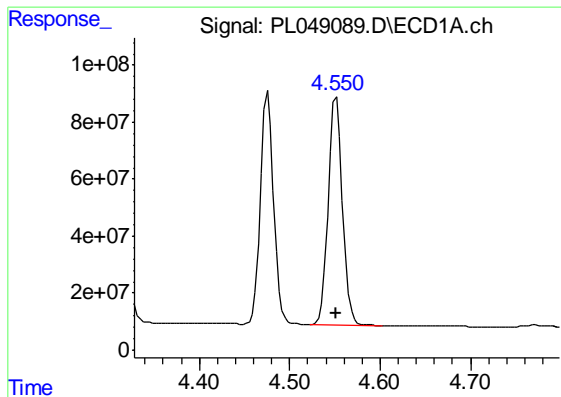
#4 Heptachlor

R.T.: 4.313 min
Delta R.T.: 0.000 min
Response: 906103345
Conc: 51.17 ng/ml



#4 Heptachlor

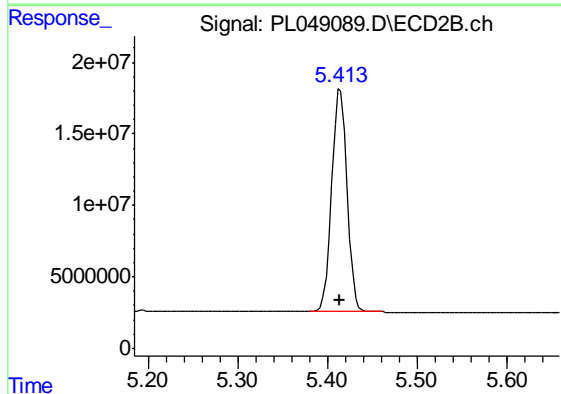
R.T.: 5.112 min
Delta R.T.: 0.000 min
Response: 200228453
Conc: 49.83 ng/ml



#5 Aldrin

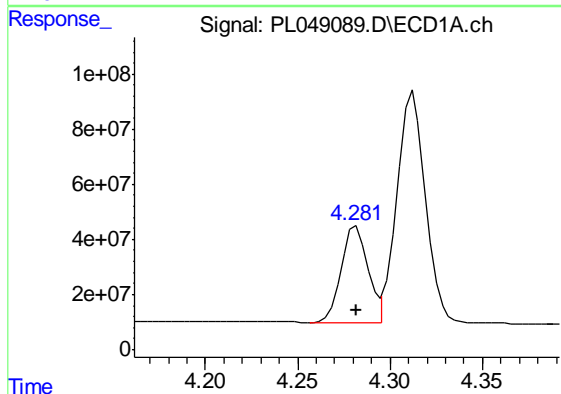
R.T.: 4.552 min
 Delta R.T.: 0.000 min
 Response: 876284096
 Conc: 51.32 ng/ml

Instrument :
 ECD_L
 ClientSampled :
 ICVPL053019



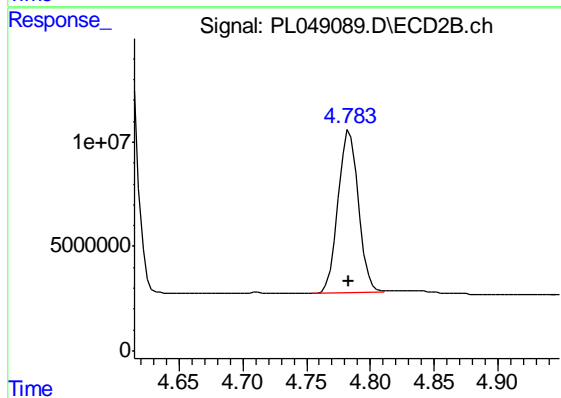
#5 Aldrin

R.T.: 5.415 min
 Delta R.T.: 0.000 min
 Response: 185700771
 Conc: 50.47 ng/ml



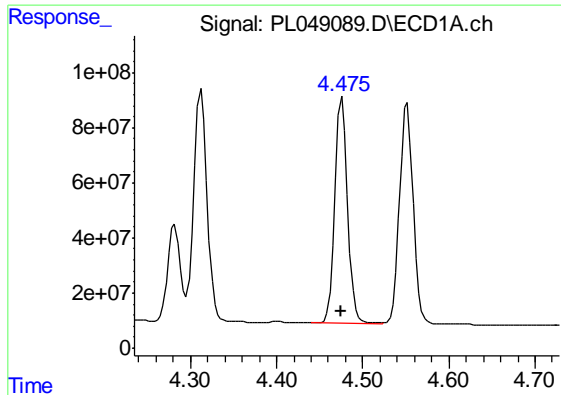
#6 beta-BHC

R.T.: 4.282 min
 Delta R.T.: 0.000 min
 Response: 347874152
 Conc: 50.06 ng/ml



#6 beta-BHC

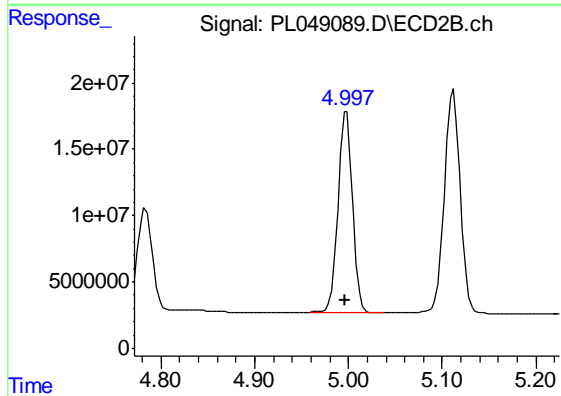
R.T.: 4.784 min
 Delta R.T.: 0.001 min
 Response: 86113334
 Conc: 49.99 ng/ml



#7 delta-BHC

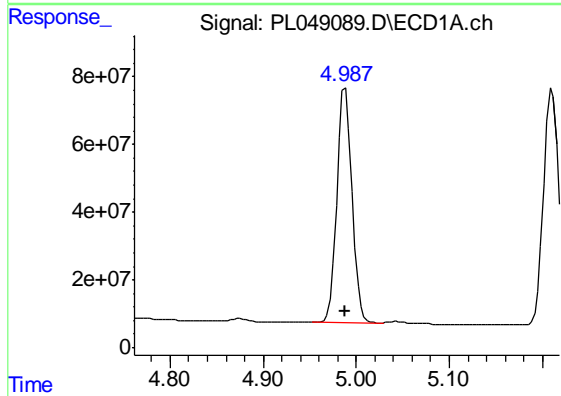
R.T.: 4.476 min
Delta R.T.: 0.000 min
Response: 833809218
Conc: 51.60 ng/ml

Instrument :
ECD_L
ClientSampleId :
ICVPL053019



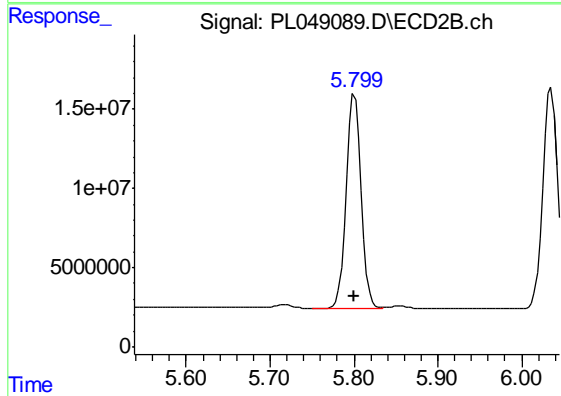
#7 delta-BHC

R.T.: 4.998 min
Delta R.T.: 0.001 min
Response: 162664493
Conc: 53.03 ng/ml



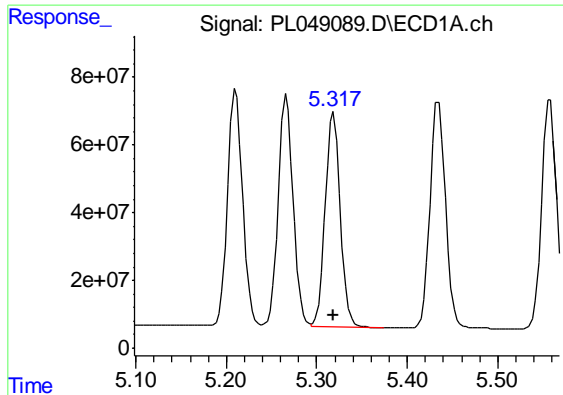
#8 Heptachlor epoxide

R.T.: 4.988 min
Delta R.T.: 0.000 min
Response: 781795688
Conc: 52.72 ng/ml



#8 Heptachlor epoxide

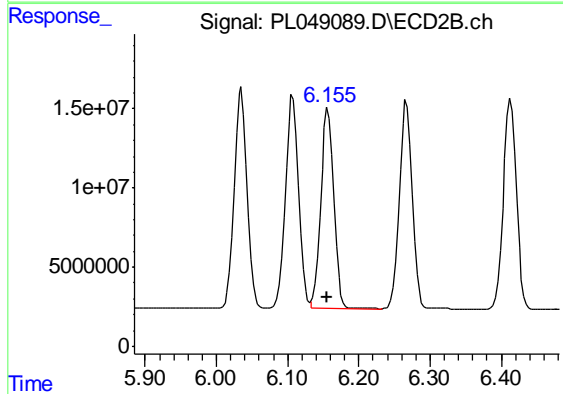
R.T.: 5.801 min
Delta R.T.: 0.000 min
Response: 165401761
Conc: 50.60 ng/ml



#9 Endosulfan I

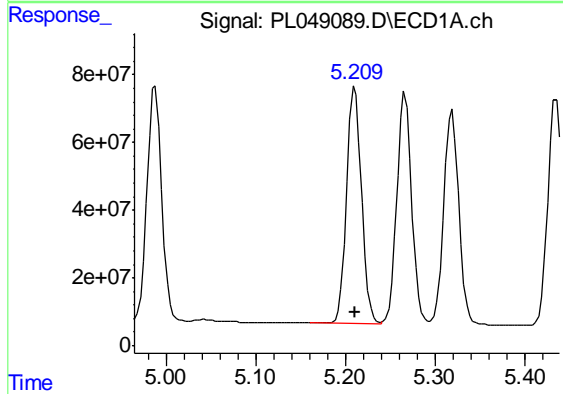
R.T.: 5.319 min
 Delta R.T.: 0.000 min
 Response: 738579228
 Conc: 50.47 ng/ml

Instrument :
 ECD_L
 ClientSampleId :
 ICVPL053019



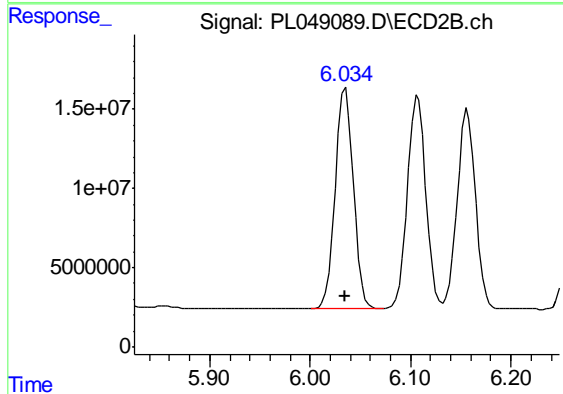
#9 Endosulfan I

R.T.: 6.157 min
 Delta R.T.: 0.000 min
 Response: 160183533
 Conc: 49.73 ng/ml



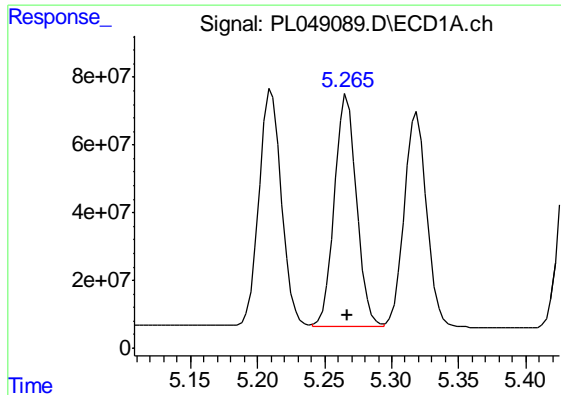
#10 gamma-Chlordane

R.T.: 5.211 min
 Delta R.T.: 0.000 min
 Response: 809577340
 Conc: 50.71 ng/ml



#10 gamma-Chlordane

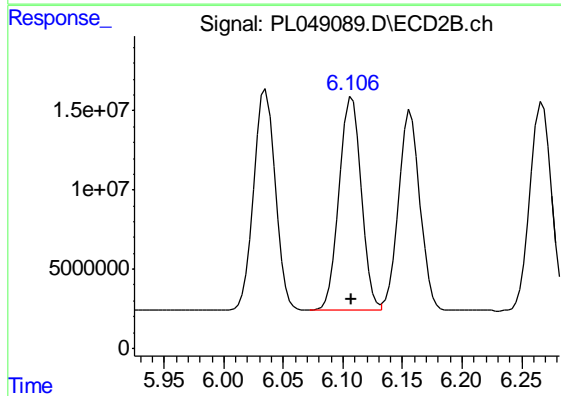
R.T.: 6.035 min
 Delta R.T.: 0.000 min
 Response: 173595982
 Conc: 50.18 ng/ml



#11 alpha-Chlordane

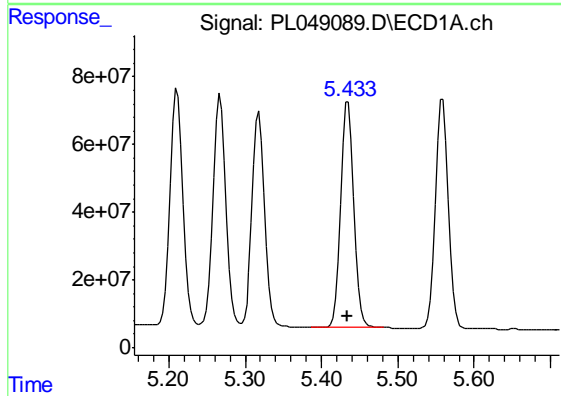
R.T.: 5.267 min
 Delta R.T.: 0.000 min
 Response: 785118555
 Conc: 50.26 ng/ml

Instrument :
 ECD_L
 ClientSampleId :
 ICVPL053019



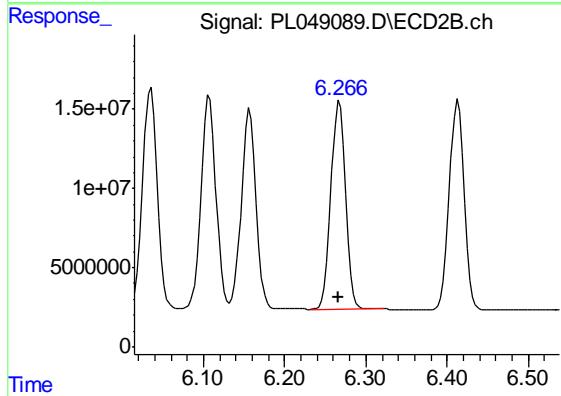
#11 alpha-Chlordane

R.T.: 6.108 min
 Delta R.T.: 0.000 min
 Response: 172700466
 Conc: 49.78 ng/ml



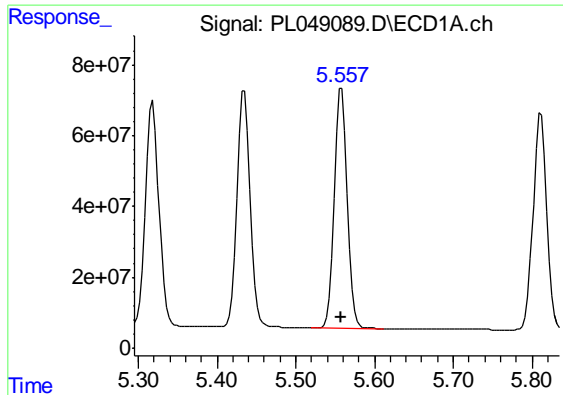
#12 4,4'-DDE

R.T.: 5.435 min
 Delta R.T.: 0.000 min
 Response: 788688641
 Conc: 50.42 ng/ml



#12 4,4'-DDE

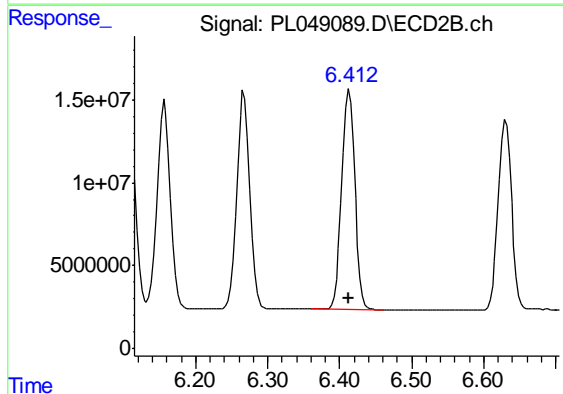
R.T.: 6.267 min
 Delta R.T.: 0.000 min
 Response: 165065718
 Conc: 50.28 ng/ml



#13 Dieldrin

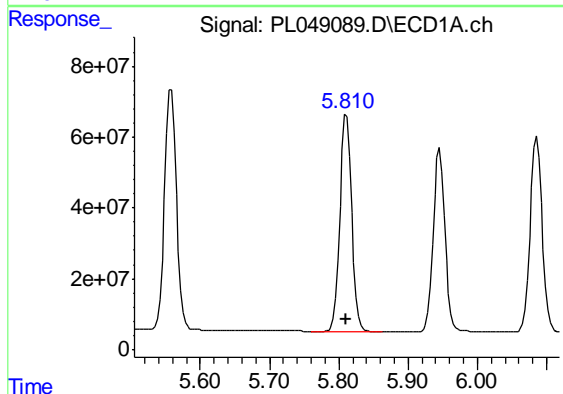
R.T.: 5.558 min
Delta R.T.: 0.000 min
Response: 789259000
Conc: 51.62 ng/ml

Instrument :
ECD_L
ClientSampled :
ICVPL053019



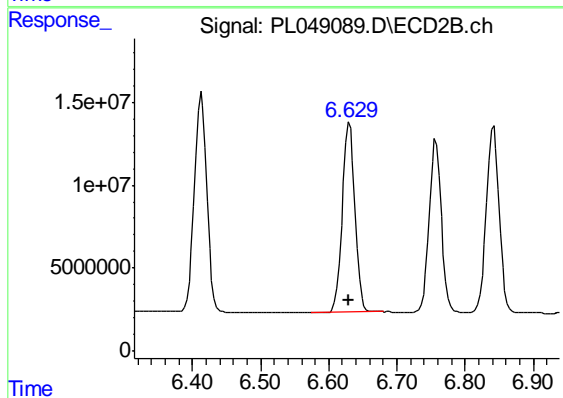
#13 Dieldrin

R.T.: 6.413 min
Delta R.T.: 0.000 min
Response: 168177255
Conc: 50.15 ng/ml



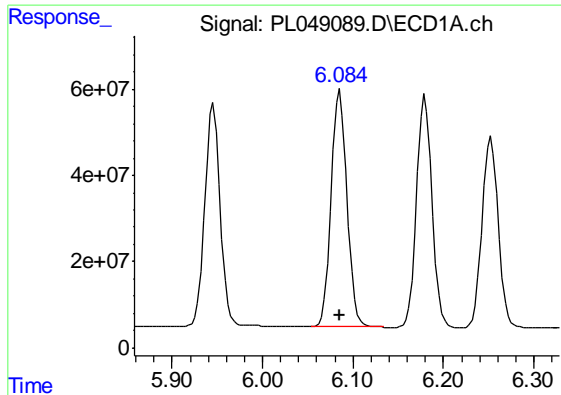
#14 Endrin

R.T.: 5.811 min
Delta R.T.: 0.000 min
Response: 726850024
Conc: 50.39 ng/ml



#14 Endrin

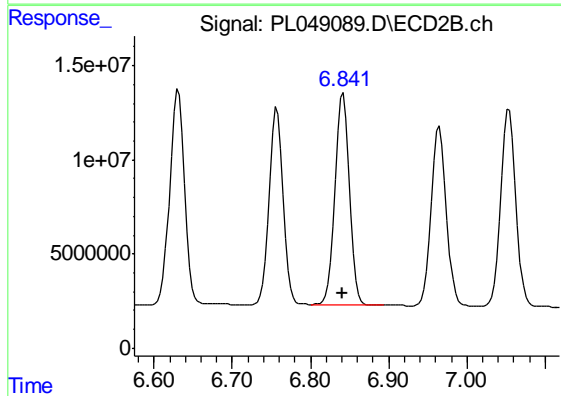
R.T.: 6.631 min
Delta R.T.: 0.000 min
Response: 148221432
Conc: 49.67 ng/ml



#15 Endosulfan II

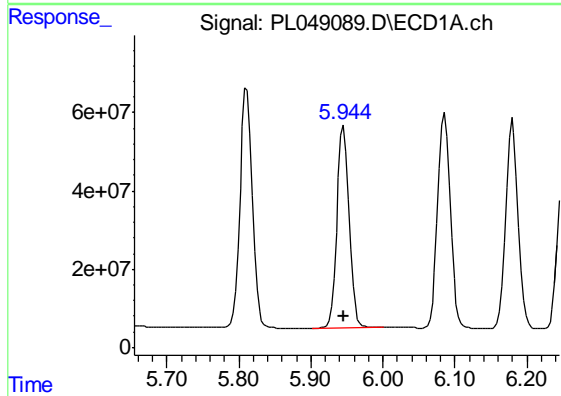
R.T.: 6.086 min
 Delta R.T.: 0.000 min
 Response: 663243840
 Conc: 50.23 ng/ml

Instrument :
 ECD_L
 ClientSampleId :
 ICVPL053019



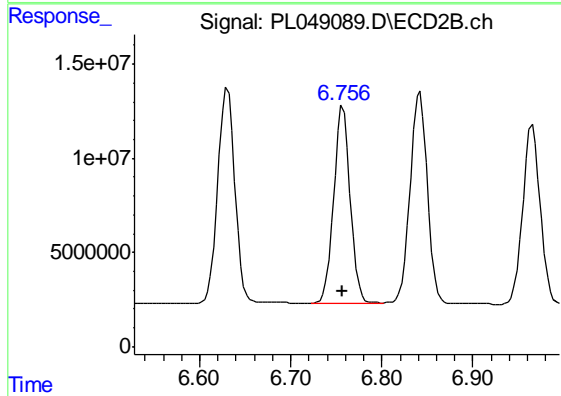
#15 Endosulfan II

R.T.: 6.842 min
 Delta R.T.: 0.001 min
 Response: 146855559
 Conc: 48.42 ng/ml



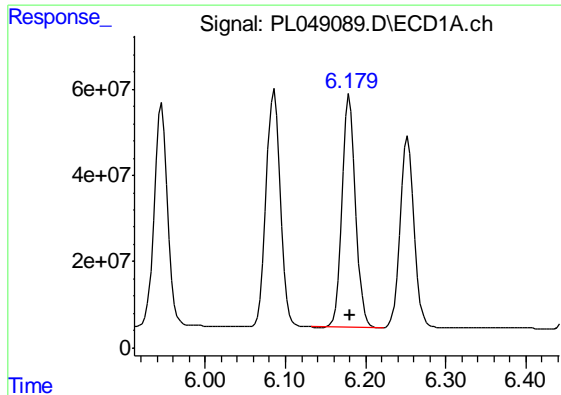
#16 4,4'-DDD

R.T.: 5.946 min
 Delta R.T.: 0.000 min
 Response: 609016352
 Conc: 51.17 ng/ml



#16 4,4'-DDD

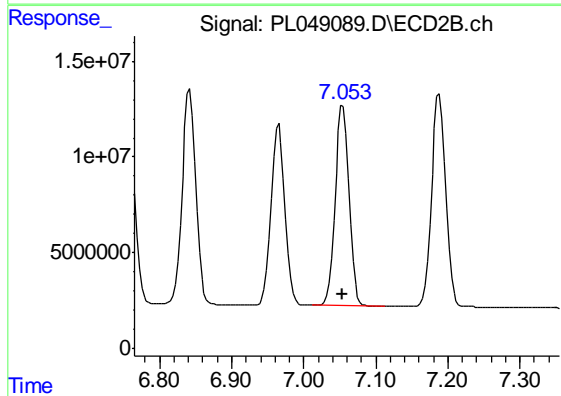
R.T.: 6.757 min
 Delta R.T.: 0.001 min
 Response: 131571318
 Conc: 50.02 ng/ml



#17 4,4'-DDT

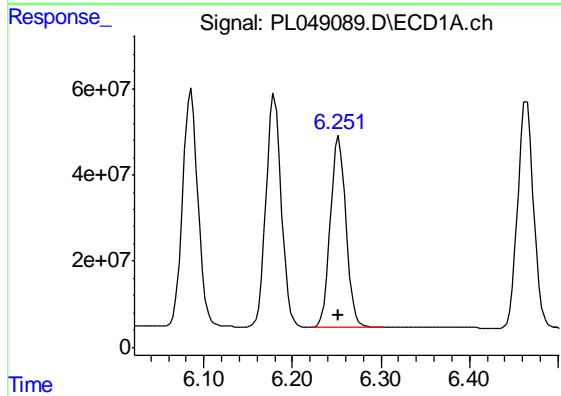
R.T.: 6.180 min
 Delta R.T.: 0.000 min
 Response: 640956087
 Conc: 52.06 ng/ml

Instrument :
 ECD_L
 ClientSampleId :
 ICVPL053019



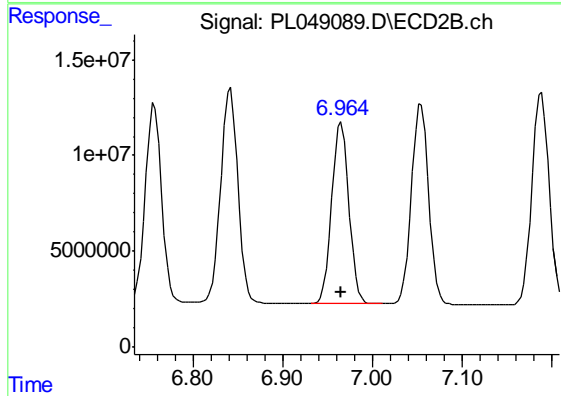
#17 4,4'-DDT

R.T.: 7.055 min
 Delta R.T.: 0.000 min
 Response: 140156065
 Conc: 49.99 ng/ml



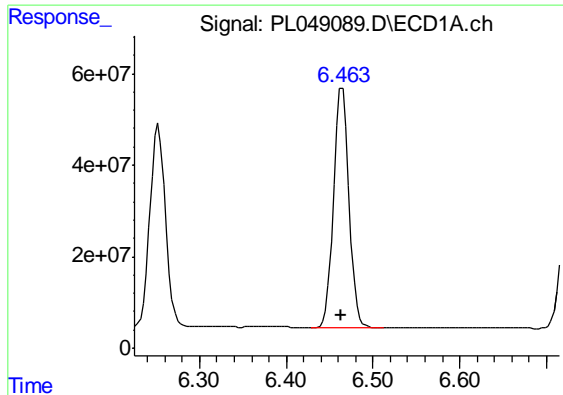
#18 Endrin aldehyde

R.T.: 6.253 min
 Delta R.T.: 0.000 min
 Response: 546319792
 Conc: 49.92 ng/ml



#18 Endrin aldehyde

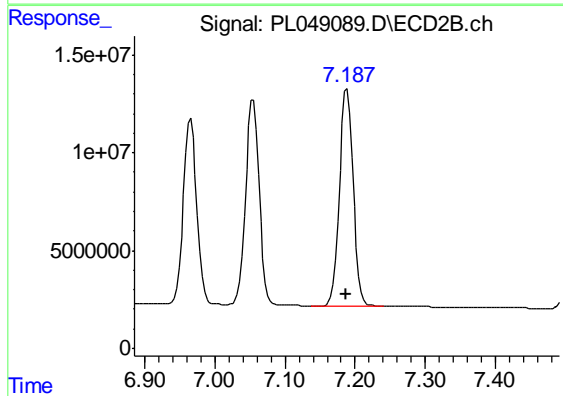
R.T.: 6.965 min
 Delta R.T.: 0.000 min
 Response: 126983908
 Conc: 49.23 ng/ml



#19 Endosulfan Sulfate

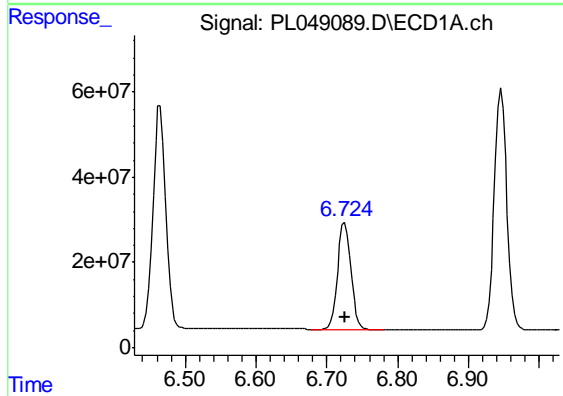
R.T.: 6.465 min
 Delta R.T.: 0.000 min
 Response: 652429105
 Conc: 50.25 ng/ml

Instrument :
 ECD_L
 ClientSampleId :
 ICVPL053019



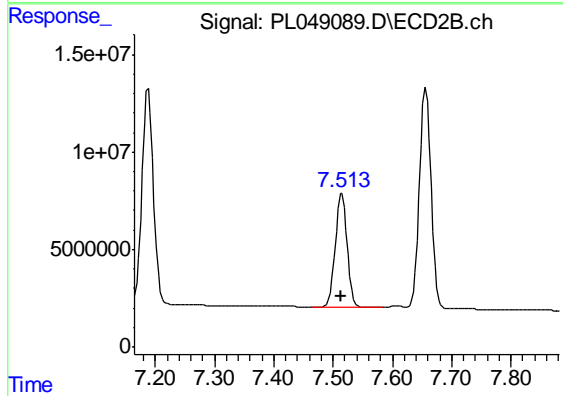
#19 Endosulfan Sulfate

R.T.: 7.188 min
 Delta R.T.: 0.000 min
 Response: 149918019
 Conc: 49.30 ng/ml



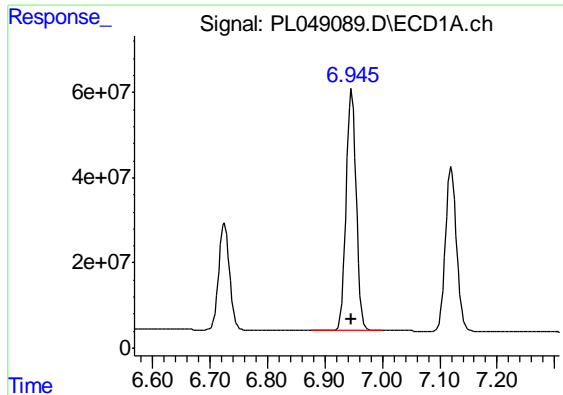
#20 Methoxychlor

R.T.: 6.725 min
 Delta R.T.: 0.000 min
 Response: 325382218
 Conc: 50.73 ng/ml



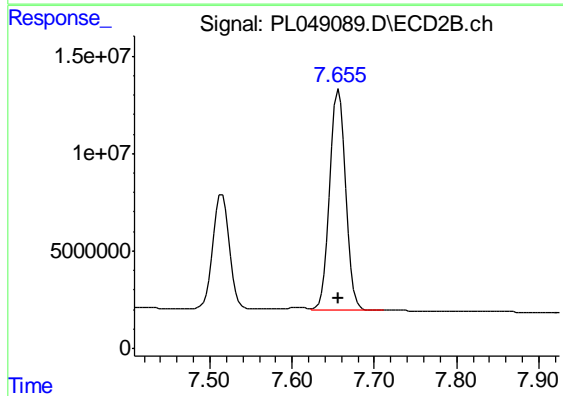
#20 Methoxychlor

R.T.: 7.515 min
 Delta R.T.: 0.000 min
 Response: 81686491
 Conc: 49.27 ng/ml

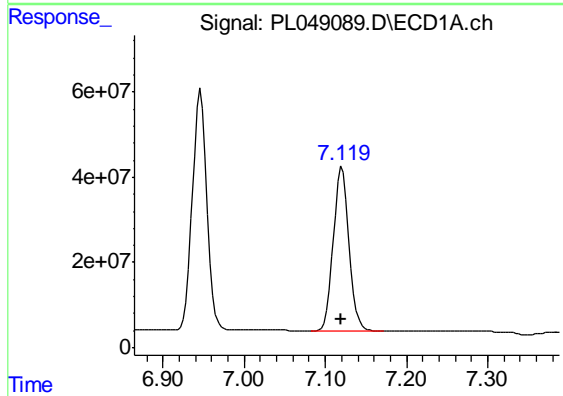


#21 Endrin ketone
 R.T.: 6.946 min
 Delta R.T.: 0.000 min
 Response: 702204186
 Conc: 51.28 ng/ml

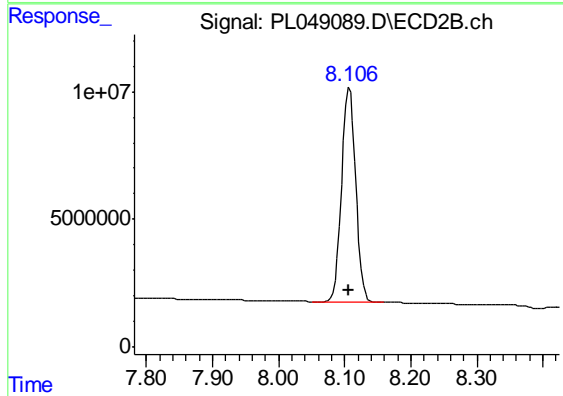
Instrument :
 ECD_L
 ClientSampleId :
 ICVPL053019



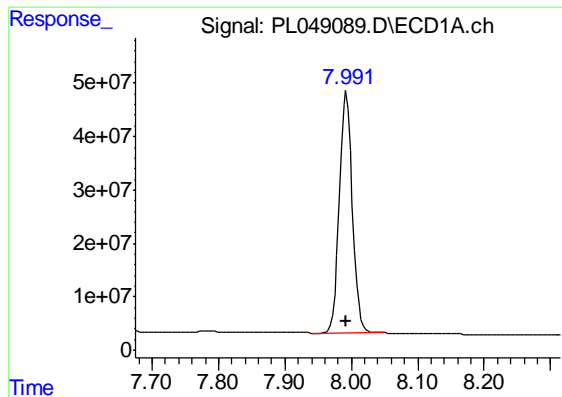
#21 Endrin ketone
 R.T.: 7.657 min
 Delta R.T.: 0.000 min
 Response: 152155129
 Conc: 47.83 ng/ml



#22 Mirex
 R.T.: 7.120 min
 Delta R.T.: 0.000 min
 Response: 517295909
 Conc: 49.09 ng/ml



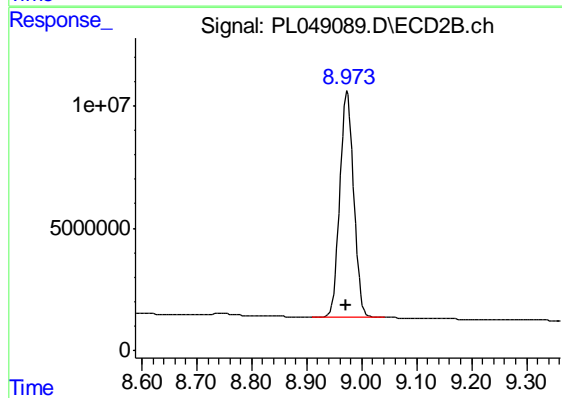
#22 Mirex
 R.T.: 8.107 min
 Delta R.T.: 0.000 min
 Response: 125234837
 Conc: 48.21 ng/ml



#28 Decachlorobiphenyl

R.T.: 7.993 min
Delta R.T.: 0.000 min
Response: 620013928
Conc: 48.76 ng/ml

Instrument :
ECD_L
ClientSampleId :
ICVPL053019



#28 Decachlorobiphenyl

R.T.: 8.974 min
Delta R.T.: 0.002 min
Response: 162686925
Conc: 48.71 ng/ml