

Data Path : Z:\pestpcbsrv\HPCHEM1\ECD_L\Data\PL053019\
 Data File : PL049120.D
 Signal(s) : Signal #1: ECD1A.ch Signal #2: ECD2B.ch
 Acq On : 30 May 2019 20:53
 Operator : SM\AJ
 Sample : K3084-01
 Misc :
 ALS Vial : 27 Sample Multiplier: 1

Instrument :
 ECD_L
 ClientSampleId :
 TEST-PIT-6

Integration File signal 1: autoint1.e
 Integration File signal 2: autoint2.e
 Quant Time: May 31 05:11:01 2019
 Quant Method : Z:\pestpcbsrv\HPCHEM1\ECD_L\methods\PL053019.M
 Quant Title : GC Extractables
 QLast Update : Fri May 31 01:35:35 2019
 Response via : Initial Calibration
 Integrator: ChemStation

Volume Inj. : 1 µl
 Signal #1 Phase : ZB-MR2 Signal #2 Phase: ZB-MR1
 Signal #1 Info : 30M x 0.32mm x0.2 Signal #2 Info : 30M x 0.32mm x0.5µm

Compound	RT#1	RT#2	Resp#1	Resp#2	ng/ml	ng/ml
----------	------	------	--------	--------	-------	-------

 System Monitoring Compounds

1) SA Tetrachlo...	3.324	3.937	240.3E6	62173846	21.804	21.521
28) SA Decachlor...	7.993	8.974	190.5E6	58425006	14.978	17.494

Target Compounds

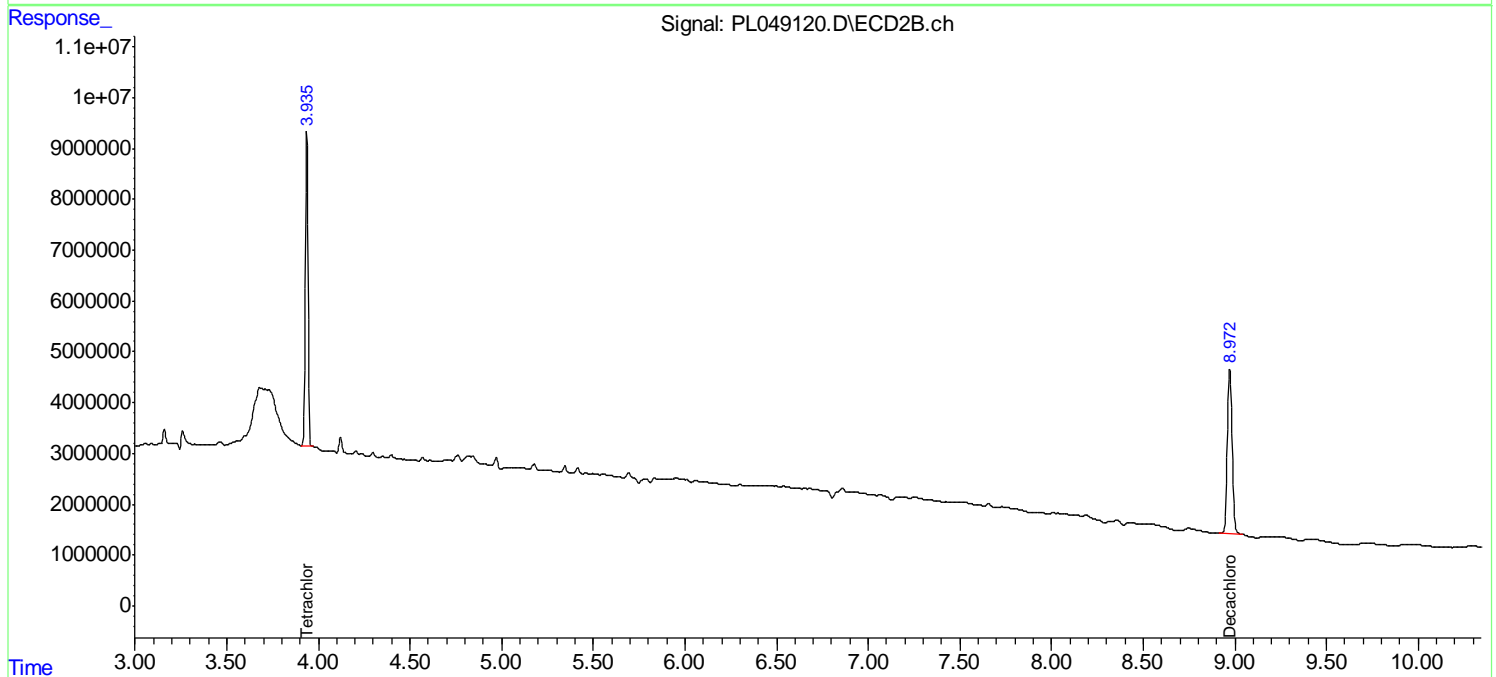
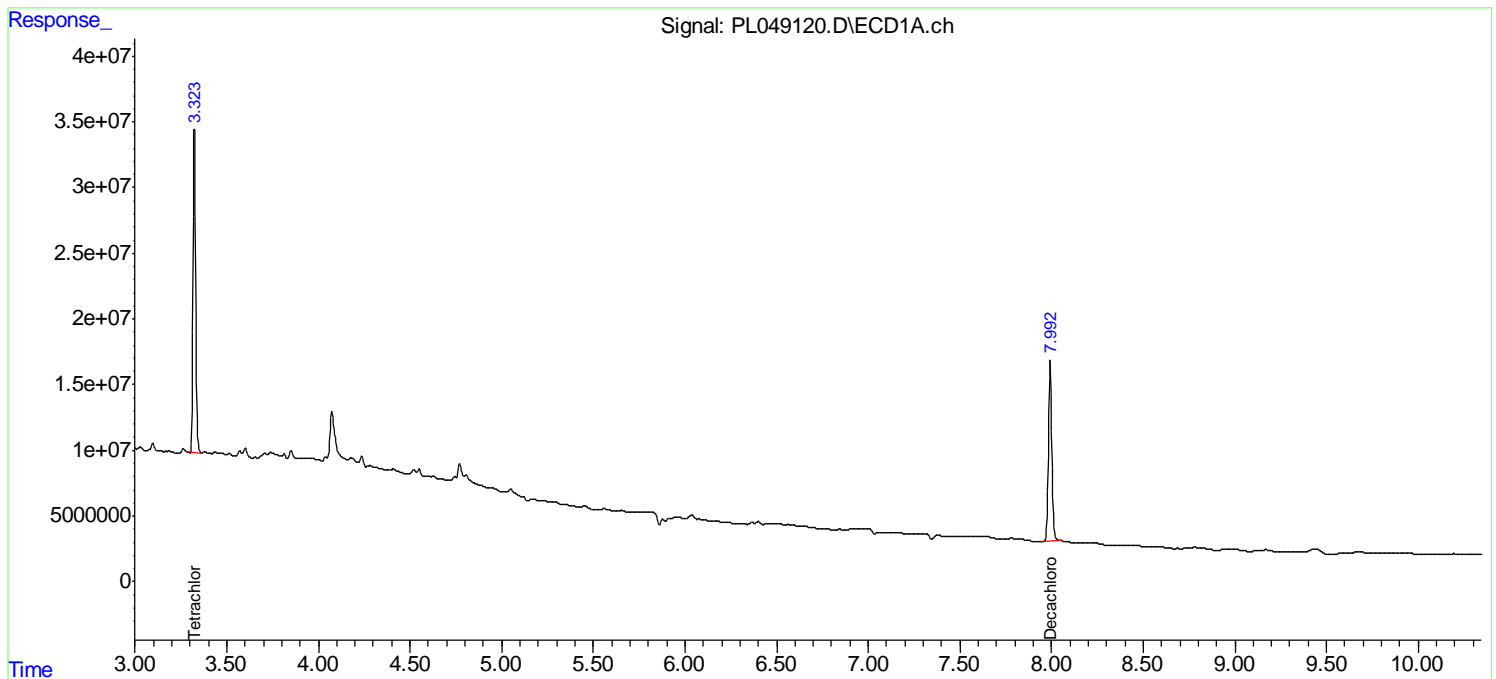
(f)=RT Delta > 1/2 Window (#)=Amounts differ by > 25% (m)=manual int.

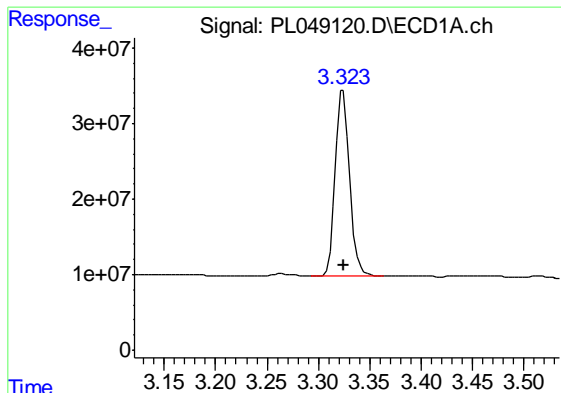
Data Path : Z:\pestpcbsrv\HPCHEM1\ECD_L\Data\PL053019\
Data File : PL049120.D
Signal(s) : Signal #1: ECD1A.ch Signal #2: ECD2B.ch
Acq On : 30 May 2019 20:53
Operator : SM\AJ
Sample : K3084-01
Misc :
ALS Vial : 27 Sample Multiplier: 1

Instrument :
ECD_L
ClientSampleId :
TEST-PIT-6

Integration File signal 1: autoint1.e
Integration File signal 2: autoint2.e
Quant Time: May 31 05:11:01 2019
Quant Method : Z:\pestpcbsrv\HPCHEM1\ECD_L\methods\PL053019.M
Quant Title : GC Extractables
QLast Update : Fri May 31 01:35:35 2019
Response via : Initial Calibration
Integrator: ChemStation

Volume Inj. : 1 µl
Signal #1 Phase : ZB-MR2 Signal #2 Phase: ZB-MR1
Signal #1 Info : 30M x 0.32mm x0.2 Signal #2 Info : 30M x 0.32mm x0.5µm

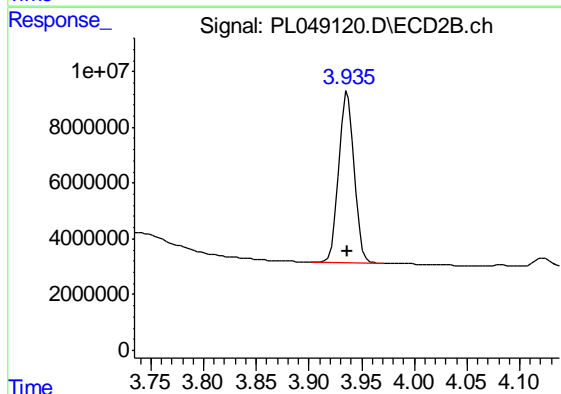




#1 Tetrachloro-m-xylene

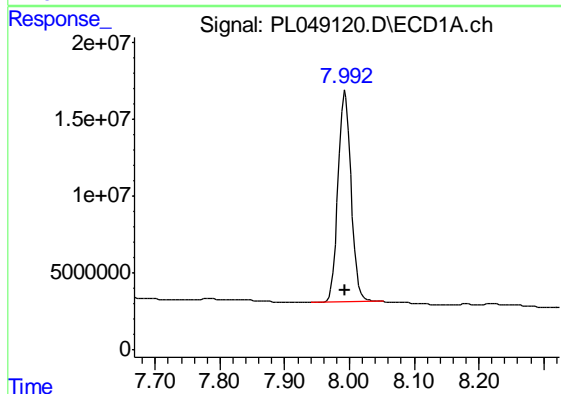
R.T.: 3.324 min
 Delta R.T.: 0.000 min
 Response: 240253548
 Conc: 21.80 ng/ml

Instrument :
 ECD_L
 ClientSampleId :
 TEST-PIT-6



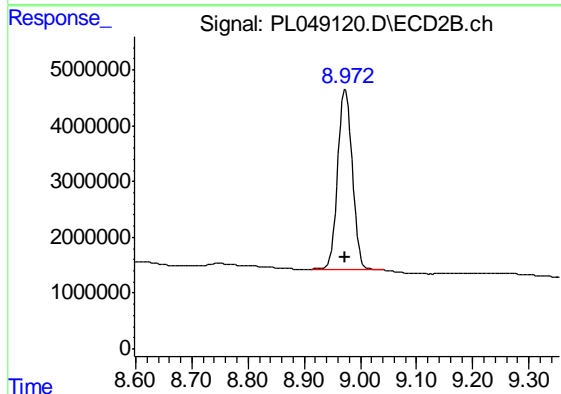
#1 Tetrachloro-m-xylene

R.T.: 3.937 min
 Delta R.T.: 0.000 min
 Response: 62173846
 Conc: 21.52 ng/ml



#28 Decachlorobiphenyl

R.T.: 7.993 min
 Delta R.T.: 0.000 min
 Response: 190457575
 Conc: 14.98 ng/ml



#28 Decachlorobiphenyl

R.T.: 8.974 min
 Delta R.T.: 0.001 min
 Response: 58425006
 Conc: 17.49 ng/ml