

Data Path : Z:\pestpcbsrv\HPCHEM1\ECD_L\Data\PL053023\
 Data File : PL083076.D
 Signal(s) : Signal #1: ECD1A.ch Signal #2: ECD2B.ch
 Acq On : 30 May 2023 09:37
 Operator : AR\AJ
 Sample : PEM
 Misc :
 ALS Vial : 3 Sample Multiplier: 1

Instrument :
 ECD_L
 ClientSampleId :

Integration File signal 1: autoint1.e
 Integration File signal 2: autoint2.e
 Quant Time: May 30 20:38:17 2023
 Quant Method : Z:\pestpcbsrv\HPCHEM1\ECD_L\methods\PL051923.M
 Quant Title : GC Extractables
 QLast Update : Sat May 20 04:58:53 2023
 Response via : Initial Calibration
 Integrator: ChemStation

Volume Inj. : 1 µl
 Signal #1 Phase : ZB-MR2 Signal #2 Phase: ZB-MR1
 Signal #1 Info : 30M x 0.32mm x0.2 Signal #2 Info : 30M x 0.32mm x0.5µm

Compound	RT#1	RT#2	Resp#1	Resp#2	ng/ml	ng/ml

System Monitoring Compounds						
1) SA Tetrachlo...	3.317	2.636	49809268	42334519	16.948	16.307
28) SA Decachlor...	8.736	7.743	37016345	42884979	17.649	17.247
Target Compounds						
2) A alpha-BHC	3.766	3.132	33815086	26315742	7.617	7.052
3) MA gamma-BHC...	4.095	3.458	33249155	25143743	8.026	7.543
5) MB Aldrin	0.000	4.056	0	43047	N.D.	0.013 #
6) B beta-BHC	4.298	3.759	16329720	13327140	8.673	9.319
7) B delta-BHC	4.518f	3.980	1396463	61945	0.406	0.019 #
8) B Heptachlo...	5.435	0.000	369894	0	0.116	N.D. #
9) A Endosulfan I	0.000	4.932	0	163870	N.D.	0.059 #
10) B gamma-Chl...	5.692	4.828	225956	415342	0.071	0.138 #
11) B alpha-Chl...	5.752f	4.866f	196157	249913	0.061	0.083 #
12) B 4,4'-DDE	0.000	5.072	0	104010	N.D.	0.043 #
13) MA Dieldrin	0.000	5.195	0	116859	N.D.	0.041 #
14) MA Endrin	6.319	5.472	104.0E6	93757590	38.697	36.957
16) A 4,4'-DDD	6.464	5.624	2524319	2123327	1.162	1.104
17) MA 4,4'-DDT	6.774	5.872	203.5E6	184.4E6	81.311	82.647
18) B Endrin al...	6.671	5.950	2628681	3181469	1.307	1.609
19) B Endosulfa...	0.000	6.166	0	322379	N.D.	0.132 #
20) A Methoxychlor	7.255	6.452	275.6E6	246.1E6	208.416	193.498
21) B Endrin ke...	7.385	6.676	4161008	5831419	1.631	2.157 #
25) Chlordane-3	5.692	4.828	225956	415342	0.545	1.558 #
26) Chlordane-4	5.752f	4.866	196157	249913	0.387	0.887 #
27) Chlordane-5	0.000	5.790f	0	408150	N.D.	4.201 #

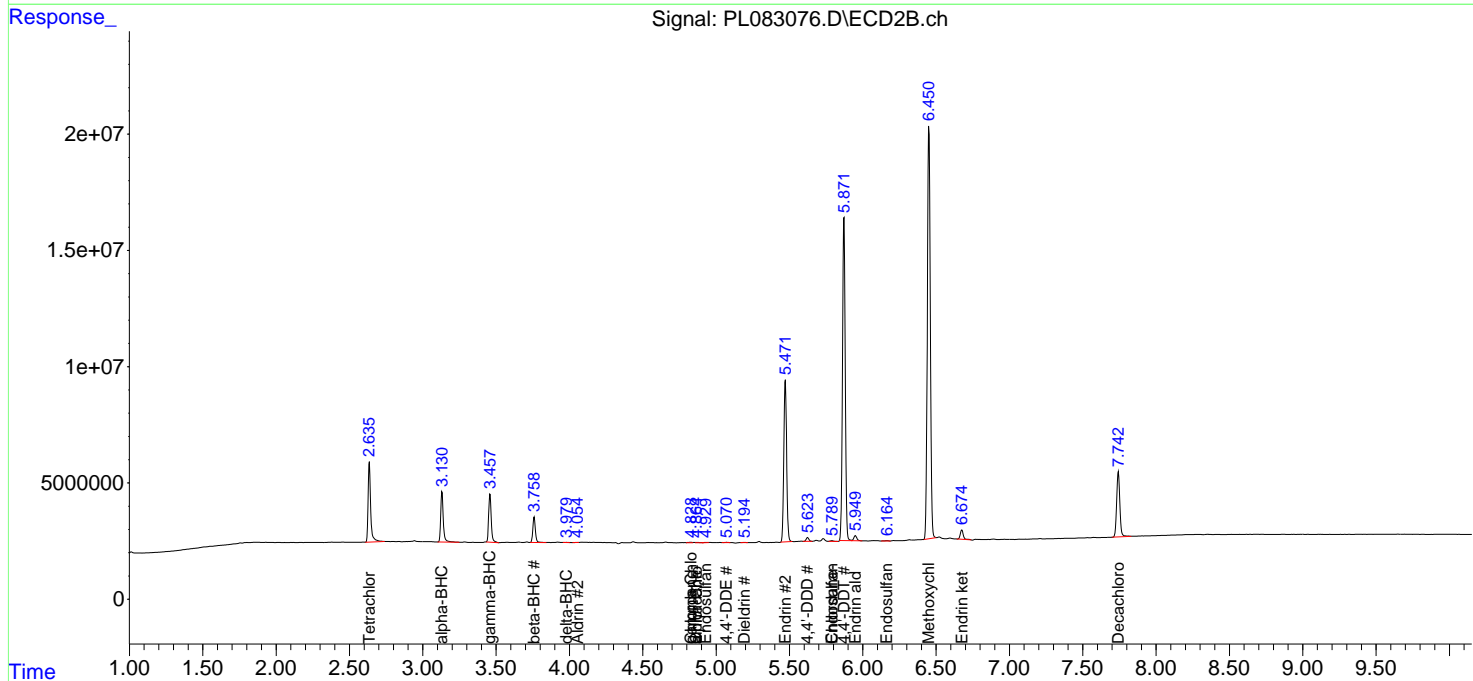
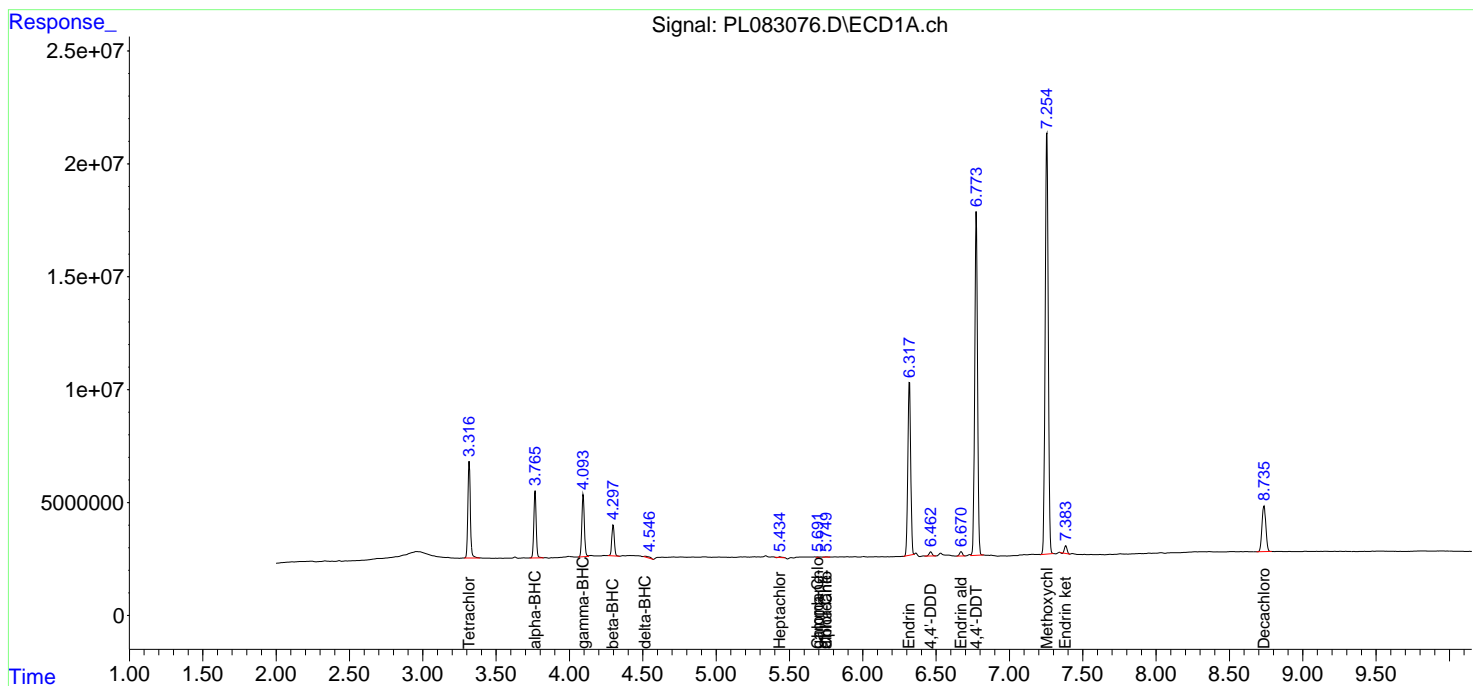
(f)=RT Delta > 1/2 Window (#)=Amounts differ by > 25% (m)=manual int.

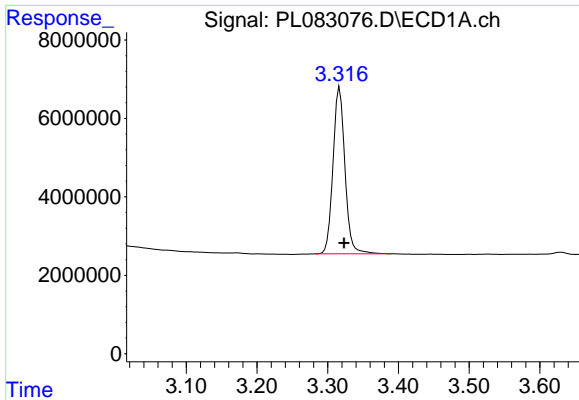
Data Path : Z:\pestpcbsrv\HPCHEM1\ECD_L\Data\PL053023\
 Data File : PL083076.D
 Signal(s) : Signal #1: ECD1A.ch Signal #2: ECD2B.ch
 Acq On : 30 May 2023 09:37
 Operator : AR\AJ
 Sample : PEM
 Misc :
 ALS Vial : 3 Sample Multiplier: 1

Instrument :
 ECD_L
 ClientSampleId :

Integration File signal 1: autoint1.e
 Integration File signal 2: autoint2.e
 Quant Time: May 30 20:38:17 2023
 Quant Method : Z:\pestpcbsrv\HPCHEM1\ECD_L\methods\PL051923.M
 Quant Title : GC Extractables
 QLast Update : Sat May 20 04:58:53 2023
 Response via : Initial Calibration
 Integrator: ChemStation

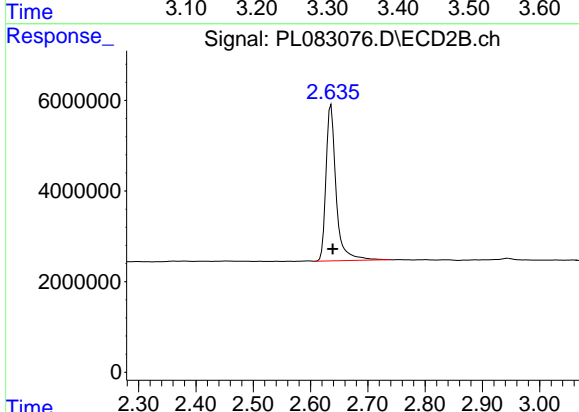
Volume Inj. : 1 µl
 Signal #1 Phase : ZB-MR2 Signal #2 Phase: ZB-MR1
 Signal #1 Info : 30M x 0.32mm x0.2 Signal #2 Info : 30M x 0.32mm x0.5µm



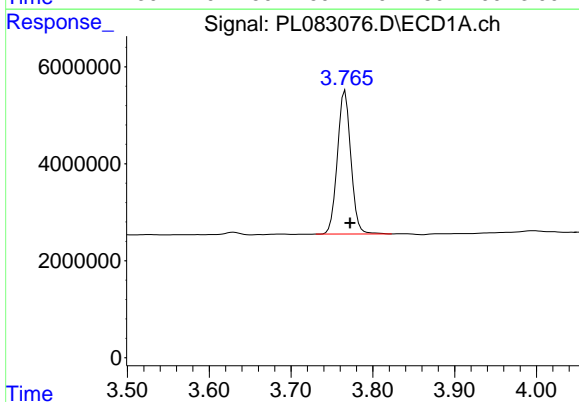


#1 Tetrachloro-m-xylene
 R.T.: 3.317 min
 Delta R.T.: -0.006 min
 Response: 49809268
 Conc: 16.95 ng/ml

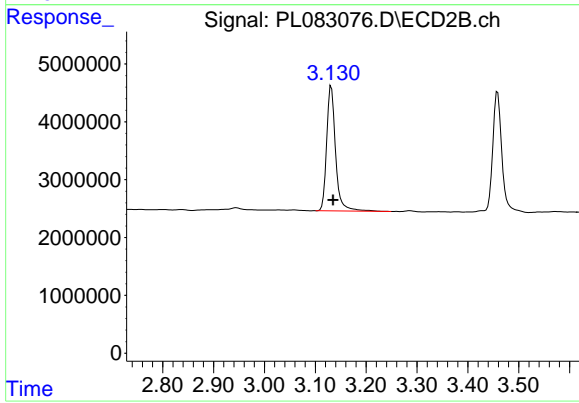
Instrument :
 ECD_L
 ClientSampleId :



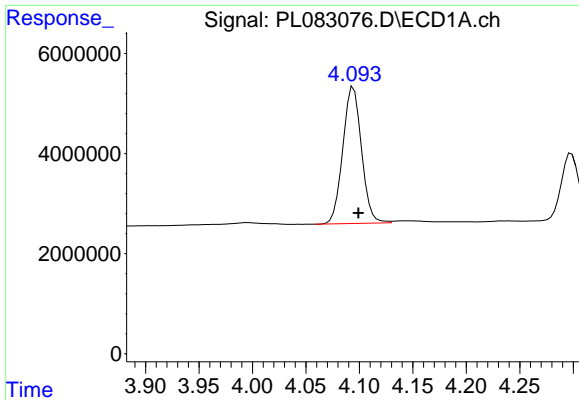
#1 Tetrachloro-m-xylene
 R.T.: 2.636 min
 Delta R.T.: -0.003 min
 Response: 42334519
 Conc: 16.31 ng/ml



#2 alpha-BHC
 R.T.: 3.766 min
 Delta R.T.: -0.006 min
 Response: 33815086
 Conc: 7.62 ng/ml

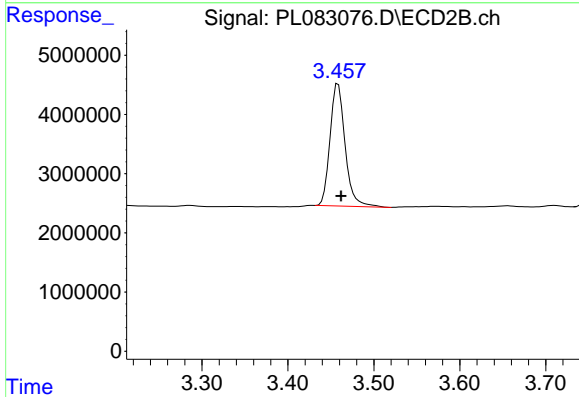


#2 alpha-BHC
 R.T.: 3.132 min
 Delta R.T.: -0.004 min
 Response: 26315742
 Conc: 7.05 ng/ml

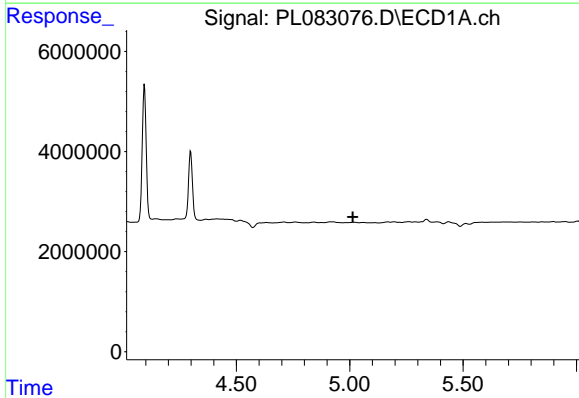


#3 gamma-BHC (Lindane)
 R.T.: 4.095 min
 Delta R.T.: -0.004 min
 Response: 33249155
 Conc: 8.03 ng/ml

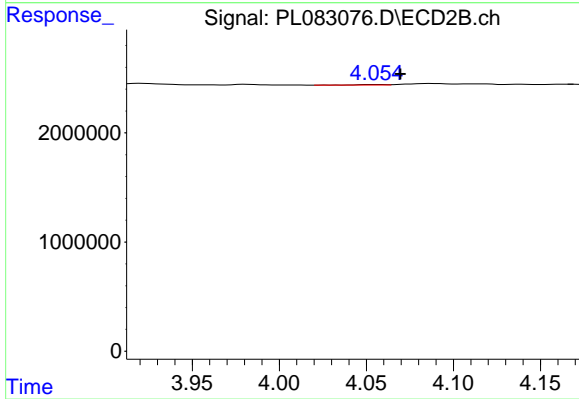
Instrument :
 ECD_L
 ClientSampleId :



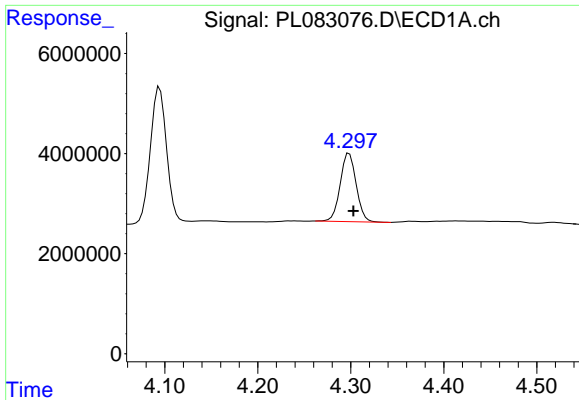
#3 gamma-BHC (Lindane)
 R.T.: 3.458 min
 Delta R.T.: -0.003 min
 Response: 25143743
 Conc: 7.54 ng/ml



#5 Aldrin
 R.T.: 0.000 min
 Exp R.T. : 5.014 min
 Response: 0
 Conc: N.D.



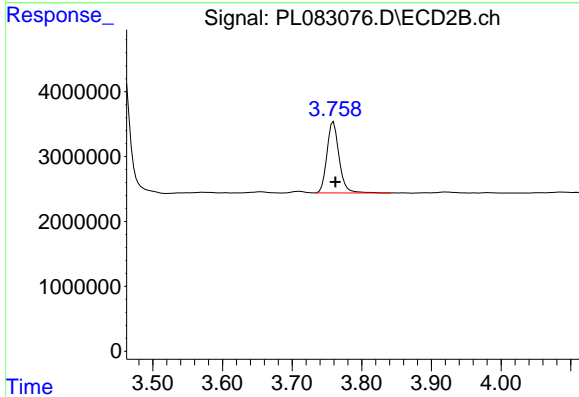
#5 Aldrin
 R.T.: 4.056 min
 Delta R.T.: -0.014 min
 Response: 43047
 Conc: 0.01 ng/ml



#6 beta-BHC

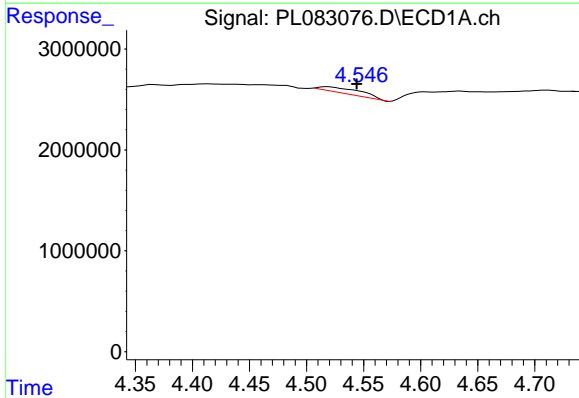
R.T.: 4.298 min
 Delta R.T.: -0.005 min
 Response: 16329720
 Conc: 8.67 ng/ml

Instrument :
 ECD_L
 ClientSampleId :



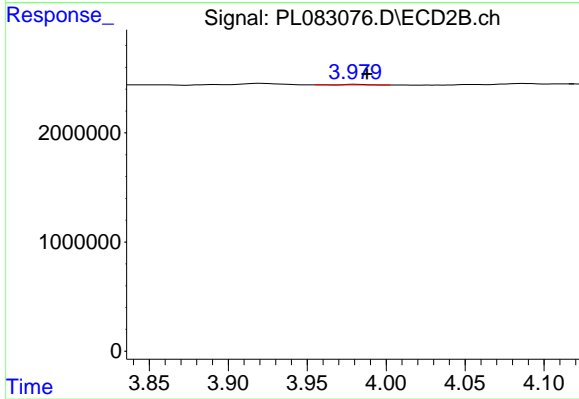
#6 beta-BHC

R.T.: 3.759 min
 Delta R.T.: -0.003 min
 Response: 13327140
 Conc: 9.32 ng/ml



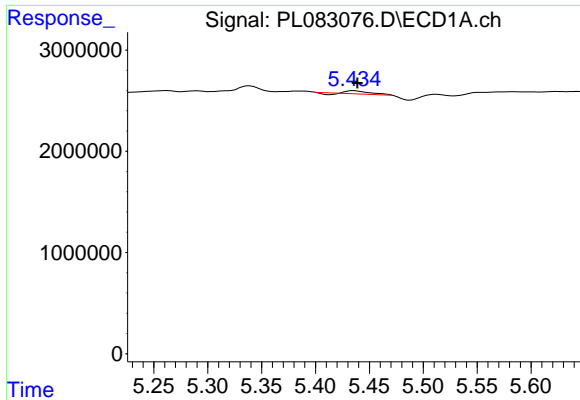
#7 delta-BHC

R.T.: 4.518 min
 Delta R.T.: -0.026 min
 Response: 1396463
 Conc: 0.41 ng/ml



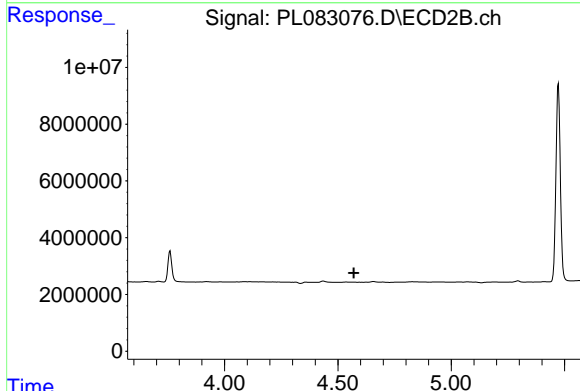
#7 delta-BHC

R.T.: 3.980 min
 Delta R.T.: -0.008 min
 Response: 61945
 Conc: 0.02 ng/ml

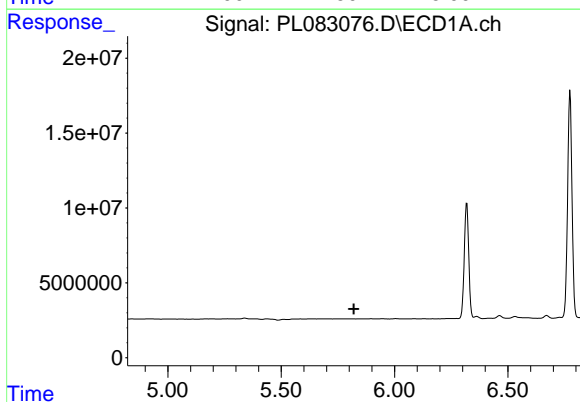


#8 Heptachlor epoxide
 R.T.: 5.435 min
 Delta R.T.: -0.004 min
 Response: 369894
 Conc: 0.12 ng/ml

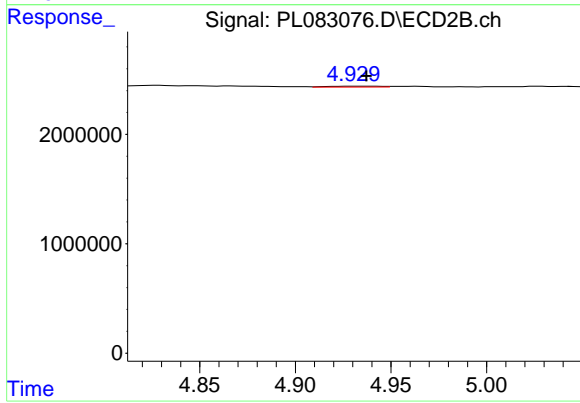
Instrument :
 ECD_L
 ClientSampleId :



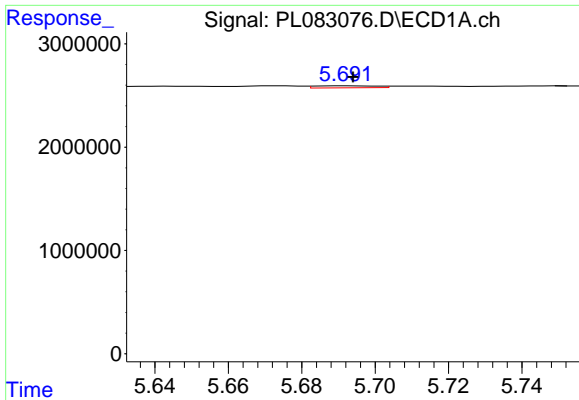
#8 Heptachlor epoxide
 R.T.: 0.000 min
 Exp R.T. : 4.570 min
 Response: 0
 Conc: N.D.



#9 Endosulfan I
 R.T.: 0.000 min
 Exp R.T. : 5.820 min
 Response: 0
 Conc: N.D.

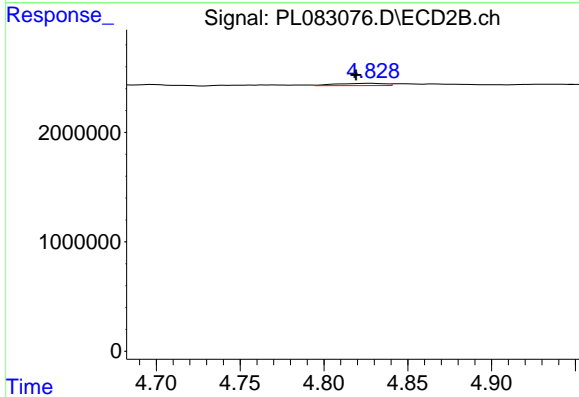


#9 Endosulfan I
 R.T.: 4.932 min
 Delta R.T.: -0.005 min
 Response: 163870
 Conc: 0.06 ng/ml

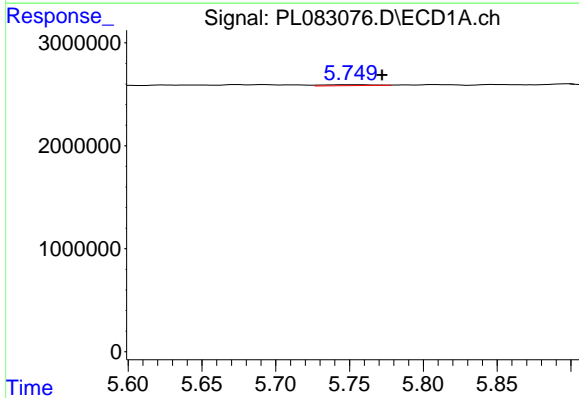


#10 gamma-Chlordane
 R.T.: 5.692 min
 Delta R.T.: -0.002 min
 Response: 225956
 Conc: 0.07 ng/ml

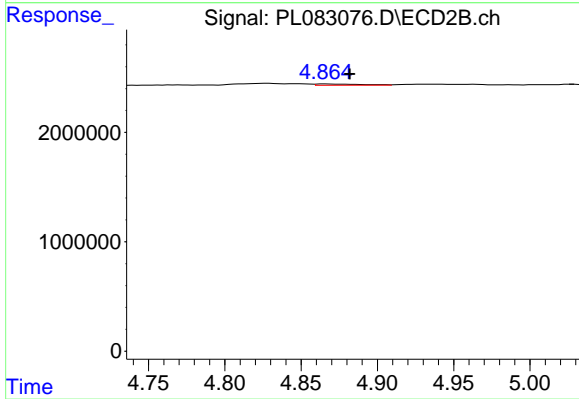
Instrument :
 ECD_L
 ClientSampleId :



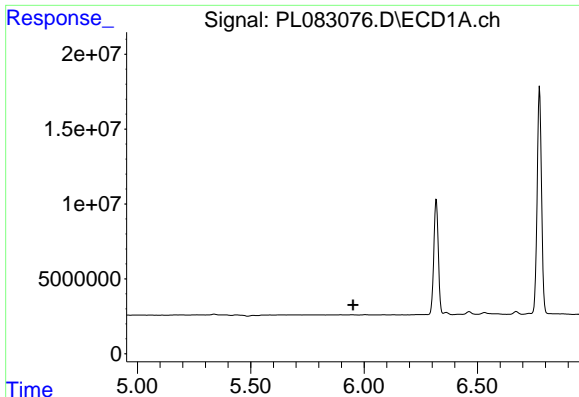
#10 gamma-Chlordane
 R.T.: 4.828 min
 Delta R.T.: 0.009 min
 Response: 415342
 Conc: 0.14 ng/ml



#11 alpha-Chlordane
 R.T.: 5.752 min
 Delta R.T.: -0.020 min
 Response: 196157
 Conc: 0.06 ng/ml



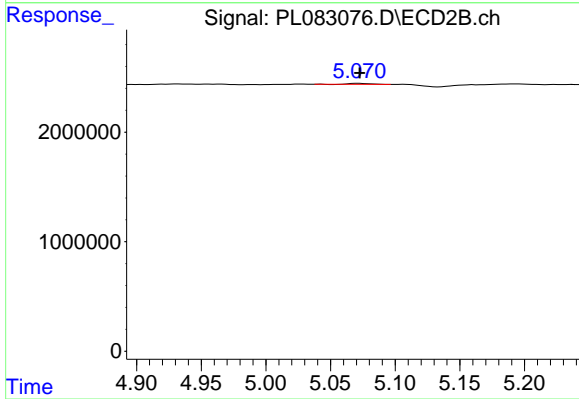
#11 alpha-Chlordane
 R.T.: 4.866 min
 Delta R.T.: -0.016 min
 Response: 249913
 Conc: 0.08 ng/ml



#12 4,4'-DDE

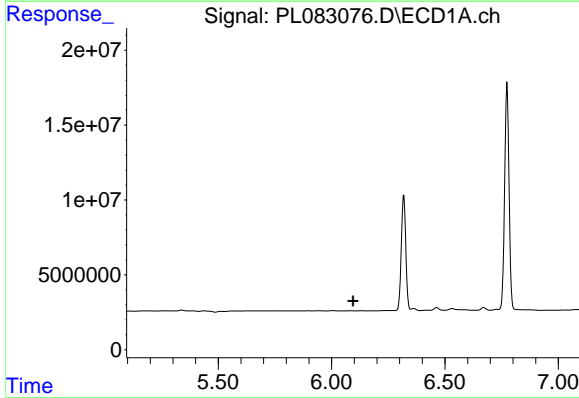
R.T.: 0.000 min
 Exp R.T.: 5.951 min
 Response: 0
 Conc: N.D.

Instrument :
 ECD_L
 ClientSampleId :



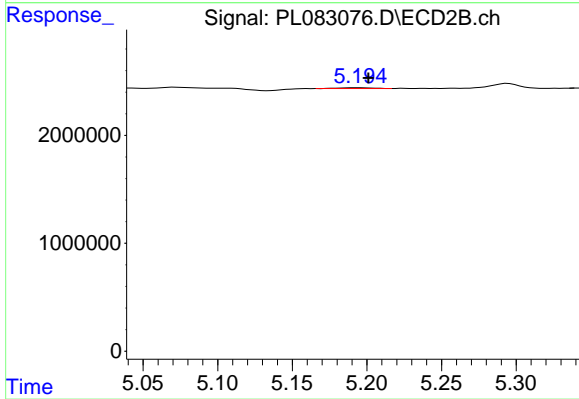
#12 4,4'-DDE

R.T.: 5.072 min
 Delta R.T.: 0.000 min
 Response: 104010
 Conc: 0.04 ng/ml



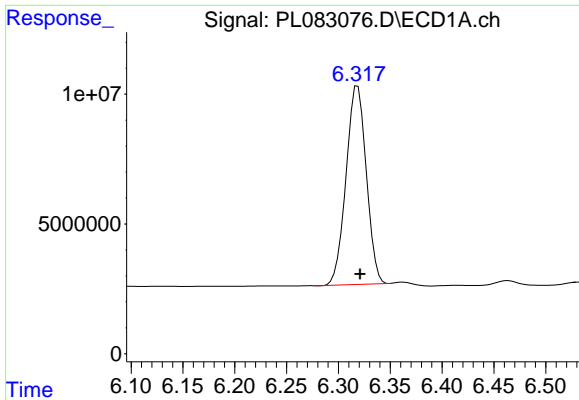
#13 Dieldrin

R.T.: 0.000 min
 Exp R.T.: 6.095 min
 Response: 0
 Conc: N.D.



#13 Dieldrin

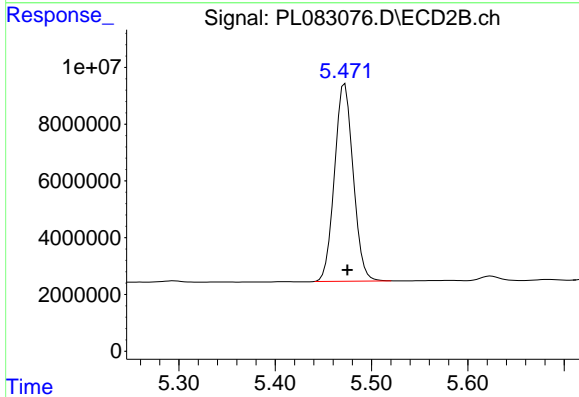
R.T.: 5.195 min
 Delta R.T.: -0.006 min
 Response: 116859
 Conc: 0.04 ng/ml



#14 Endrin

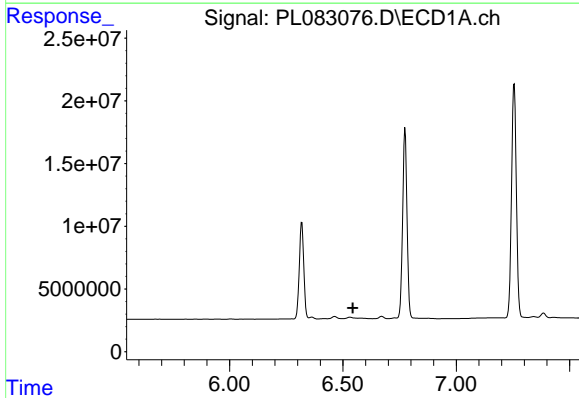
R.T.: 6.319 min
 Delta R.T.: -0.002 min
 Response: 103989852
 Conc: 38.70 ng/ml

Instrument :
 ECD_L
 ClientSampleId :



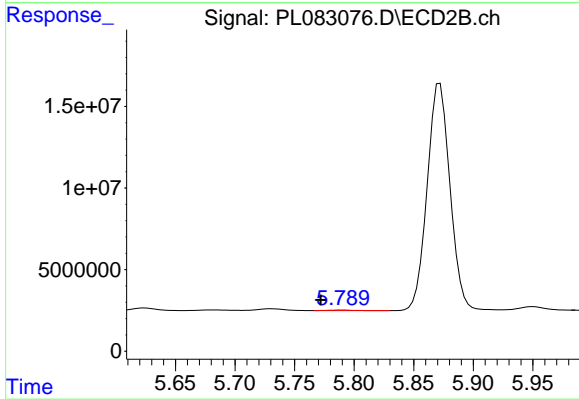
#14 Endrin

R.T.: 5.472 min
 Delta R.T.: -0.003 min
 Response: 93757590
 Conc: 36.96 ng/ml



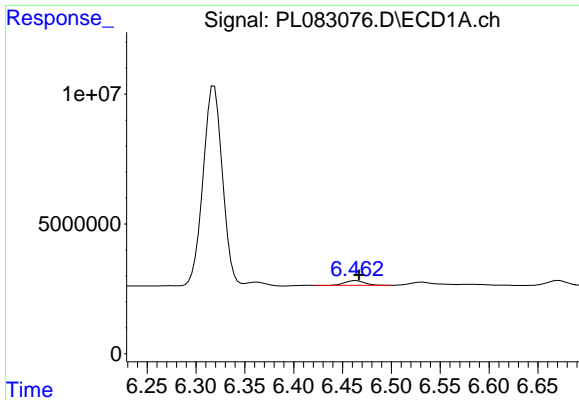
#15 Endosulfan II

R.T.: 6.532 min
 Delta R.T.: -0.011 min
 Response: 1585185
 Conc: N.D.



#15 Endosulfan II

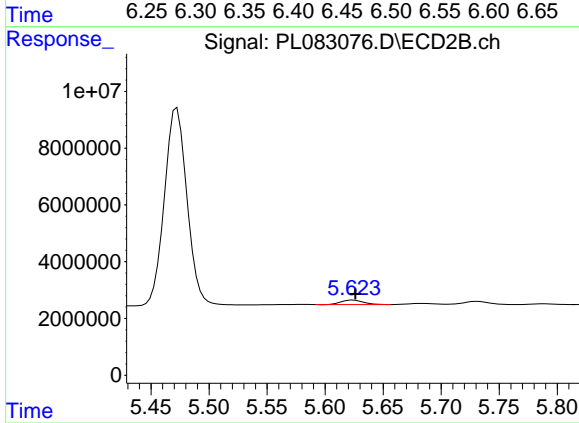
R.T.: 5.790 min
 Delta R.T.: 0.018 min
 Response: 408150
 Conc: 0.16 ng/ml



#16 4,4'-DDD

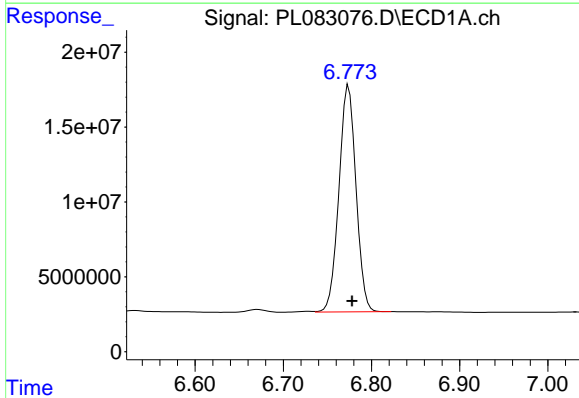
R.T.: 6.464 min
 Delta R.T.: -0.003 min
 Response: 2524319
 Conc: 1.16 ng/ml

Instrument :
 ECD_L
 ClientSampleId :



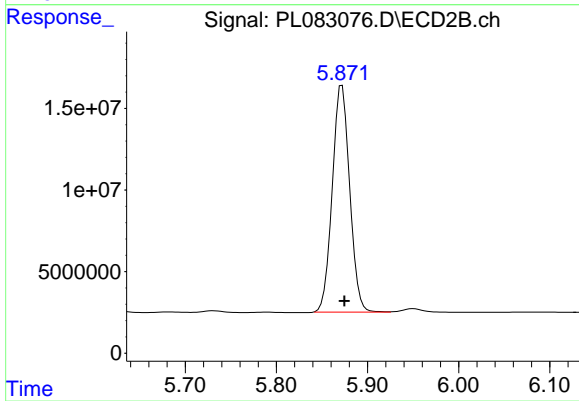
#16 4,4'-DDD

R.T.: 5.624 min
 Delta R.T.: -0.002 min
 Response: 2123327
 Conc: 1.10 ng/ml



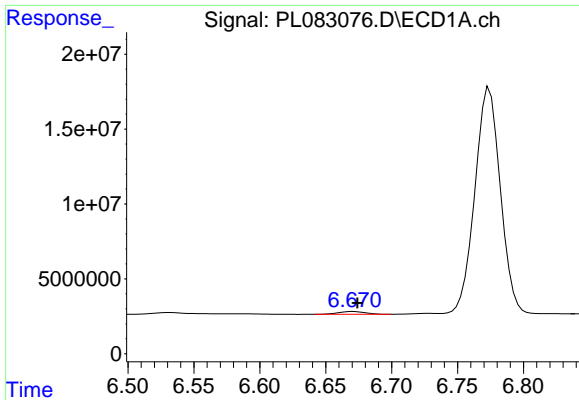
#17 4,4'-DDT

R.T.: 6.774 min
 Delta R.T.: -0.004 min
 Response: 203534566
 Conc: 81.31 ng/ml



#17 4,4'-DDT

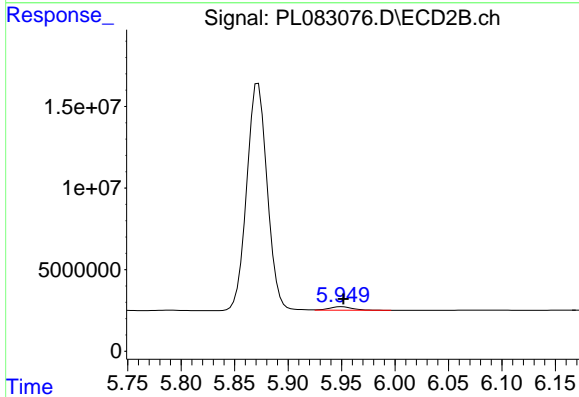
R.T.: 5.872 min
 Delta R.T.: -0.003 min
 Response: 184387009
 Conc: 82.65 ng/ml



#18 Endrin aldehyde

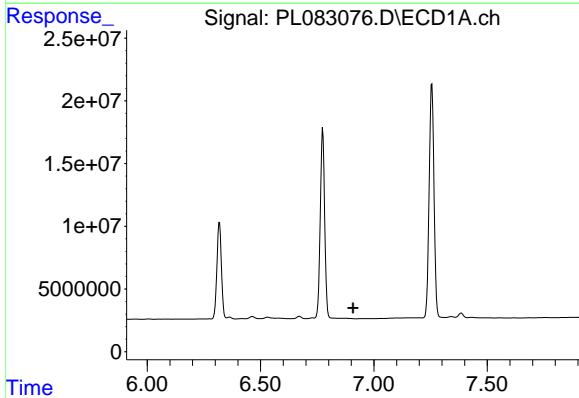
R.T.: 6.671 min
 Delta R.T.: -0.003 min
 Response: 2628681
 Conc: 1.31 ng/ml

Instrument :
 ECD_L
 ClientSampleId :



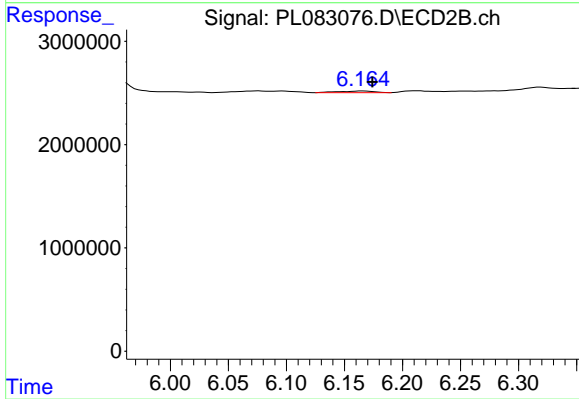
#18 Endrin aldehyde

R.T.: 5.950 min
 Delta R.T.: -0.001 min
 Response: 3181469
 Conc: 1.61 ng/ml



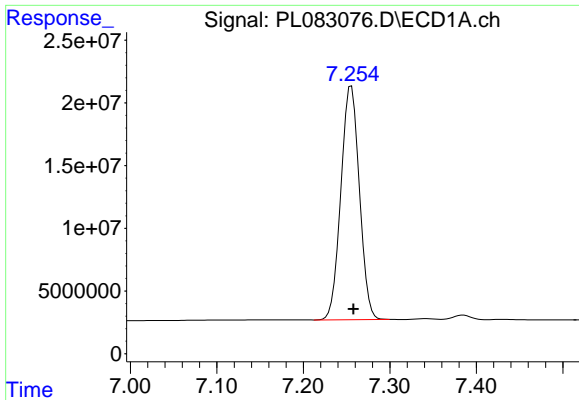
#19 Endosulfan Sulfate

R.T.: 0.000 min
 Exp R.T. : 6.908 min
 Response: 0
 Conc: N.D.



#19 Endosulfan Sulfate

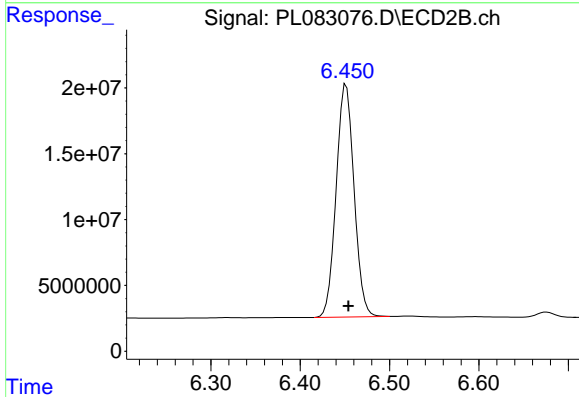
R.T.: 6.166 min
 Delta R.T.: -0.008 min
 Response: 322379
 Conc: 0.13 ng/ml



#20 Methoxychlor

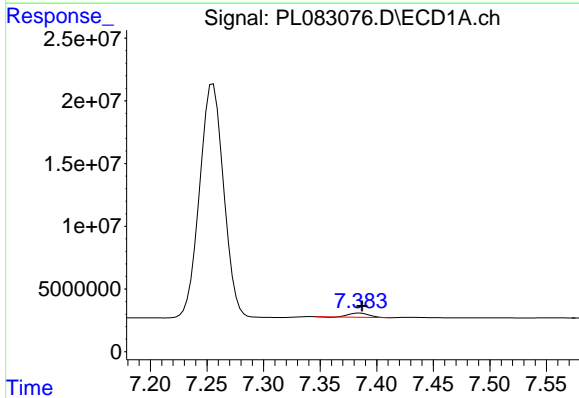
R.T.: 7.255 min
 Delta R.T.: -0.003 min
 Response: 275604871
 Conc: 208.42 ng/ml

Instrument :
 ECD_L
 ClientSampleId :



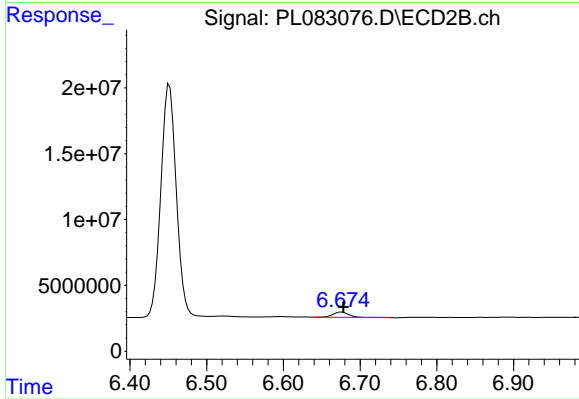
#20 Methoxychlor

R.T.: 6.452 min
 Delta R.T.: -0.002 min
 Response: 246080385
 Conc: 193.50 ng/ml



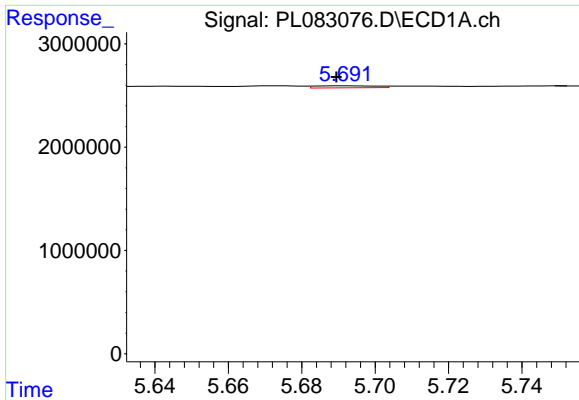
#21 Endrin ketone

R.T.: 7.385 min
 Delta R.T.: -0.002 min
 Response: 4161008
 Conc: 1.63 ng/ml



#21 Endrin ketone

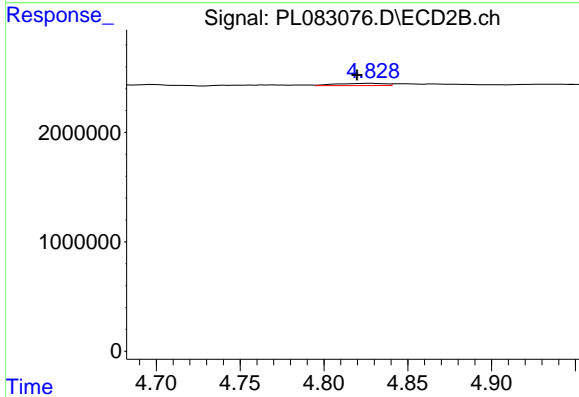
R.T.: 6.676 min
 Delta R.T.: -0.002 min
 Response: 5831419
 Conc: 2.16 ng/ml



#25 Chlordane-3

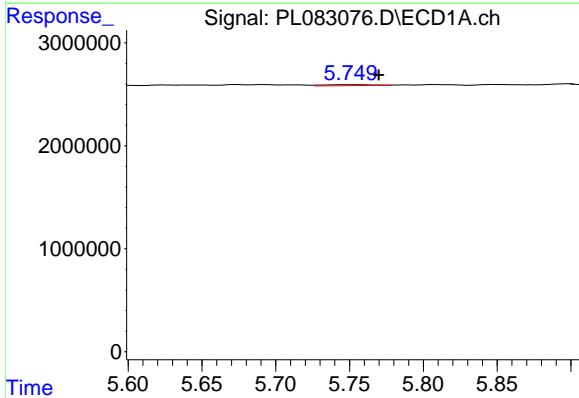
R.T.: 5.692 min
 Delta R.T.: 0.003 min
 Response: 225956
 Conc: 0.54 ng/ml

Instrument :
 ECD_L
 ClientSampleId :



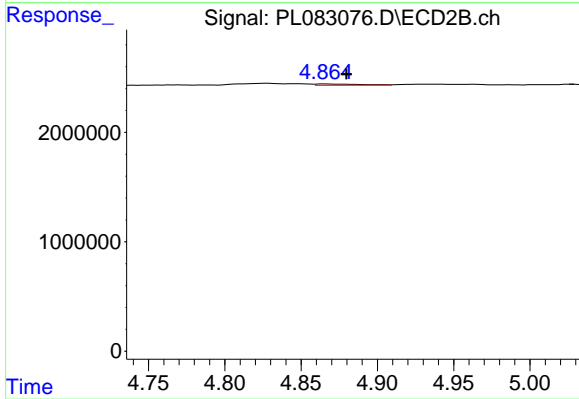
#25 Chlordane-3

R.T.: 4.828 min
 Delta R.T.: 0.009 min
 Response: 415342
 Conc: 1.56 ng/ml



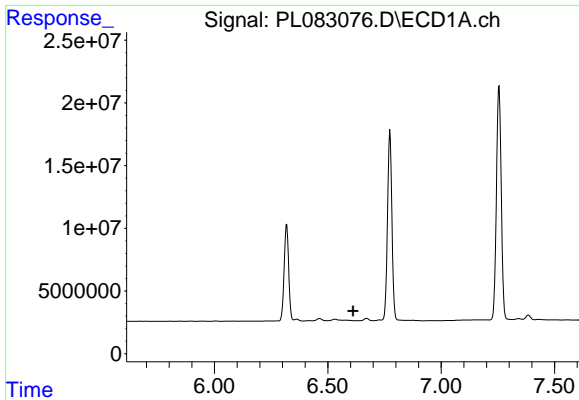
#26 Chlordane-4

R.T.: 5.752 min
 Delta R.T.: -0.018 min
 Response: 196157
 Conc: 0.39 ng/ml



#26 Chlordane-4

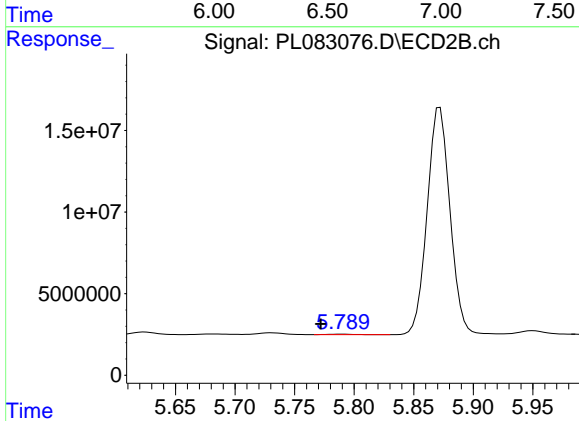
R.T.: 4.866 min
 Delta R.T.: -0.014 min
 Response: 249913
 Conc: 0.89 ng/ml



#27 Chlordane-5

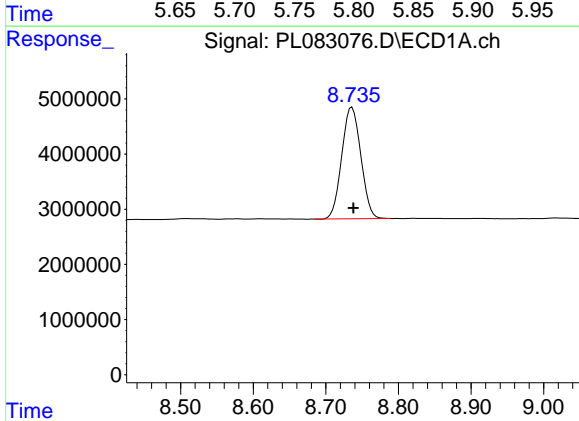
R.T.: 0.000 min
 Exp R.T.: 6.612 min
 Response: 0
 Conc: N.D.

Instrument :
 ECD_L
 ClientSampleId :



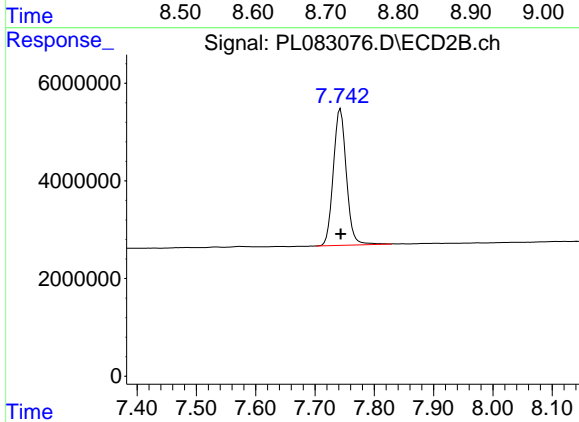
#27 Chlordane-5

R.T.: 5.790 min
 Delta R.T.: 0.018 min
 Response: 408150
 Conc: 4.20 ng/ml



#28 Decachlorobiphenyl

R.T.: 8.736 min
 Delta R.T.: -0.002 min
 Response: 37016345
 Conc: 17.65 ng/ml



#28 Decachlorobiphenyl

R.T.: 7.743 min
 Delta R.T.: 0.000 min
 Response: 42884979
 Conc: 17.25 ng/ml