

Data Path : Z:\pestpcbsrv\HPCHEM1\ECD_L\Data\PL053119\
 Data File : PL049153.D
 Signal(s) : Signal #1: ECD1A.ch Signal #2: ECD2B.ch
 Acq On : 31 May 2019 18:03
 Operator : SM\AJ
 Sample : K3111-01
 Misc :
 ALS Vial : 21 Sample Multiplier: 1

Instrument :
 ECD_L
 ClientSampleId :
 FK-BPM-01-D1-D2-D1A-D2A

Integration File signal 1: autoint1.e
 Integration File signal 2: autoint2.e
 Quant Time: May 31 23:15:12 2019
 Quant Method : Z:\pestpcbsrv\HPCHEM1\ECD_L\methods\PL053019.M
 Quant Title : GC Extractables
 QLast Update : Fri May 31 01:35:35 2019
 Response via : Initial Calibration
 Integrator: ChemStation

Volume Inj. : 1 µl
 Signal #1 Phase : ZB-MR2 Signal #2 Phase: ZB-MR1
 Signal #1 Info : 30M x 0.32mm x0.2 Signal #2 Info : 30M x 0.32mm x0.5µm

Compound	RT#1	RT#2	Resp#1	Resp#2	ng/ml	ng/ml

System Monitoring Compounds						
1) SA Tetrachlo...	3.324	3.937	236.4E6	62029494	21.451	21.471
28) SA Decachlor...	7.992	8.974	215.9E6	65495128	16.976	19.611

Target Compounds

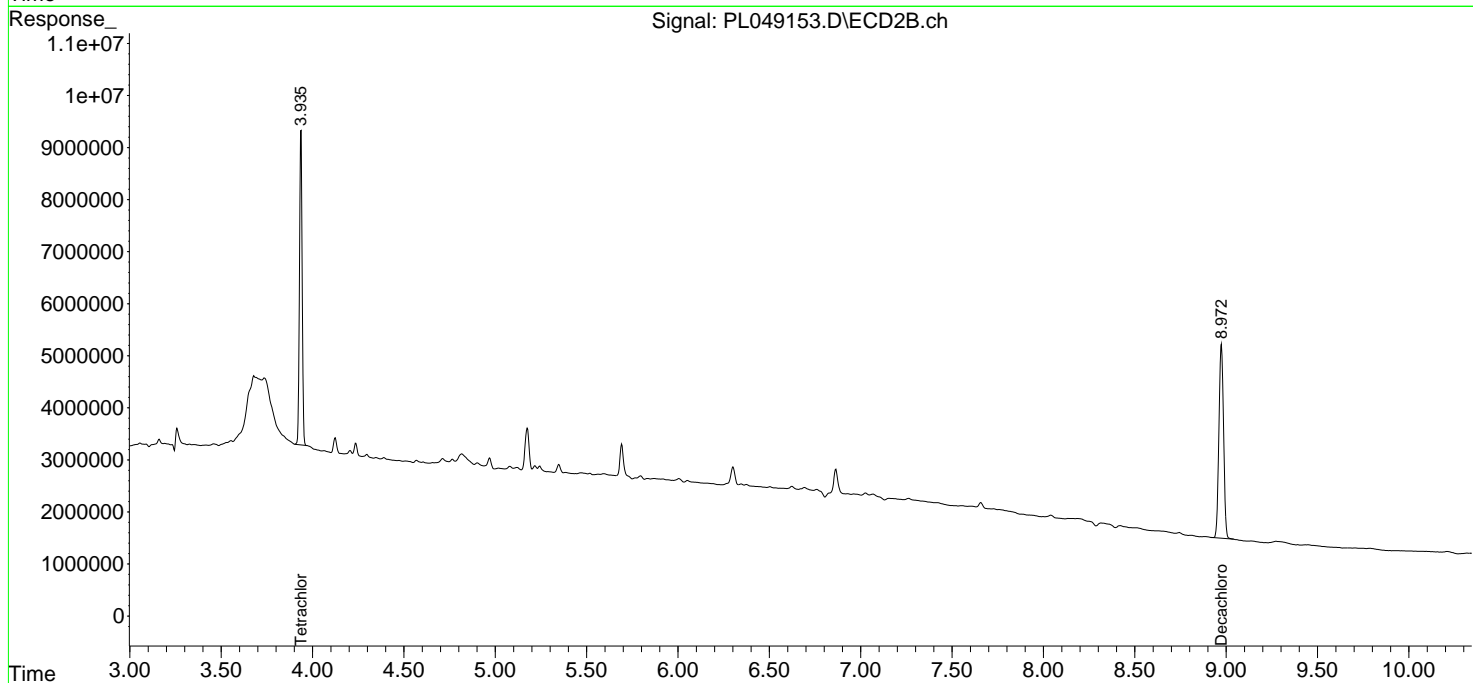
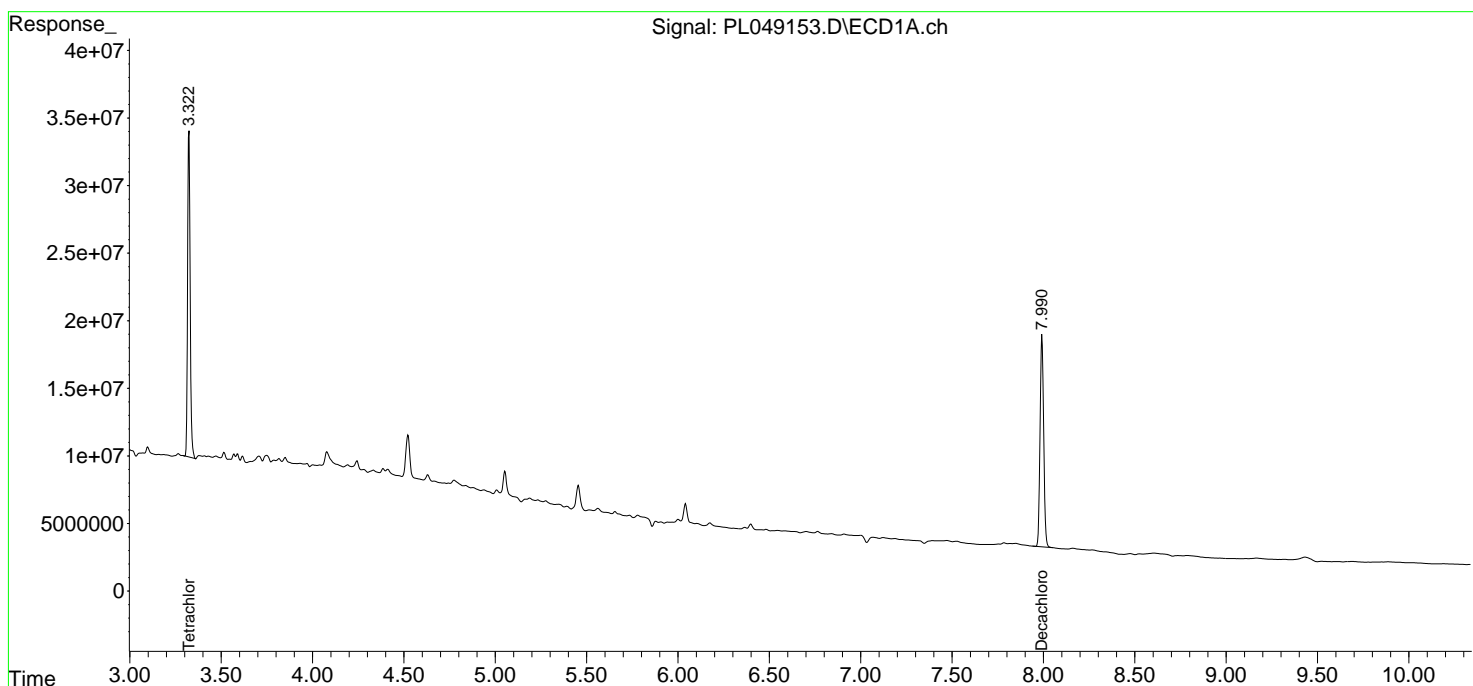
(f)=RT Delta > 1/2 Window (#)=Amounts differ by > 25% (m)=manual int.

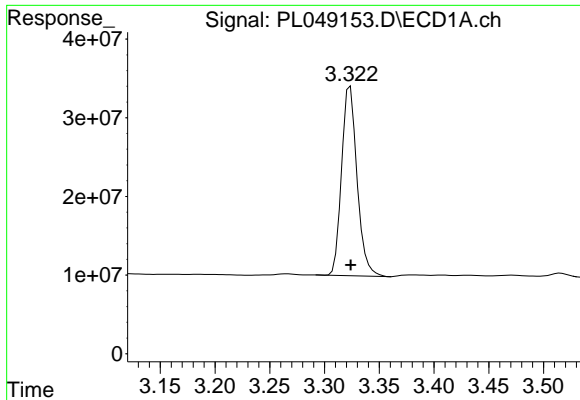
Data Path : Z:\pestpcbsrv\HPCHEM1\ECD_L\Data\PL053119\
 Data File : PL049153.D
 Signal(s) : Signal #1: ECD1A.ch Signal #2: ECD2B.ch
 Acq On : 31 May 2019 18:03
 Operator : SM\AJ
 Sample : K3111-01
 Misc :
 ALS Vial : 21 Sample Multiplier: 1

Instrument :
 ECD_L
ClientSampleId :
 FK-BPM-01-D1-D2-D1A-D2A

Integration File signal 1: autoint1.e
 Integration File signal 2: autoint2.e
 Quant Time: May 31 23:15:12 2019
 Quant Method : Z:\pestpcbsrv\HPCHEM1\ECD_L\methods\PL053019.M
 Quant Title : GC Extractables
 QLast Update : Fri May 31 01:35:35 2019
 Response via : Initial Calibration
 Integrator: ChemStation

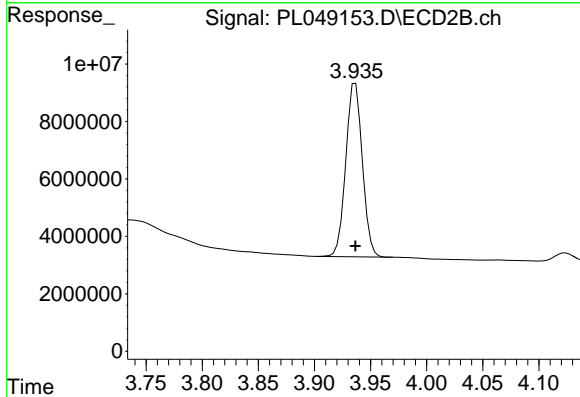
Volume Inj. : 1 µl
 Signal #1 Phase : ZB-MR2 Signal #2 Phase: ZB-MR1
 Signal #1 Info : 30M x 0.32mm x0.2 Signal #2 Info : 30M x 0.32mm x0.5µm



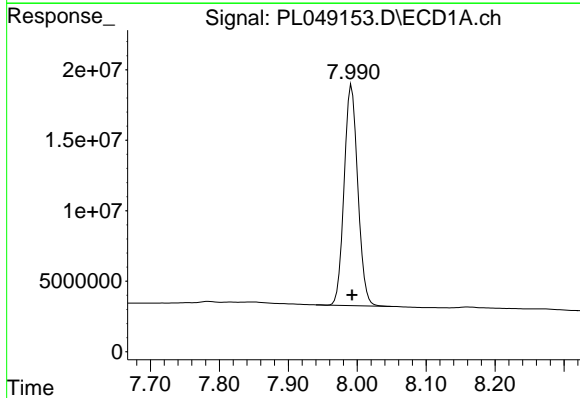


#1 Tetrachloro-m-xylene
 R.T.: 3.324 min
 Delta R.T.: 0.000 min
 Response: 236367111
 Conc: 21.45 ng/ml

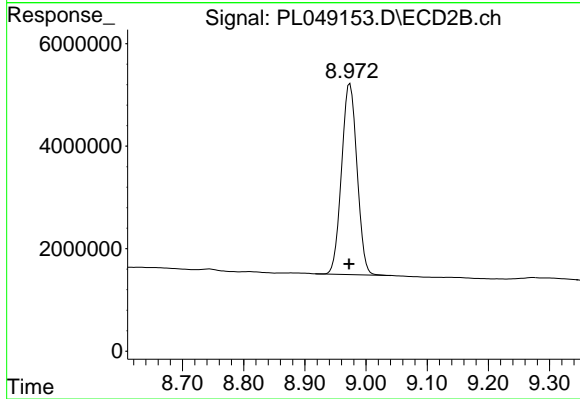
Instrument :
 ECD_L
ClientSampleId :
 FK-BPM-01-D1-D2-D1A-D2A



#1 Tetrachloro-m-xylene
 R.T.: 3.937 min
 Delta R.T.: 0.000 min
 Response: 62029494
 Conc: 21.47 ng/ml



#28 Decachlorobiphenyl
 R.T.: 7.992 min
 Delta R.T.: 0.000 min
 Response: 215863588
 Conc: 16.98 ng/ml



#28 Decachlorobiphenyl
 R.T.: 8.974 min
 Delta R.T.: 0.001 min
 Response: 65495128
 Conc: 19.61 ng/ml