

Data Path : Z:\pestpcbsrv\HPCHEM1\ECD_L\Data\PL053122\
 Data File : PL075303.D
 Signal(s) : Signal #1: ECD1A.ch Signal #2: ECD2B.ch
 Acq On : 31 May 2022 21:11
 Operator : AR\AJ
 Sample : N3070-02MSD
 Misc :
 ALS Vial : 19 Sample Multiplier: 1

Instrument :
 ECD_L
 ClientSampleId :
 SC1MSD

Integration File signal 1: autoint1.e
 Integration File signal 2: autoint2.e
 Quant Time: Jun 01 07:44:37 2022
 Quant Method : Z:\pestpcbsrv\HPCHEM1\ECD_L\methods\PL052822.M
 Quant Title : GC Extractables
 QLast Update : Tue May 31 02:52:42 2022
 Response via : Initial Calibration
 Integrator: ChemStation

Volume Inj. : 1 µl
 Signal #1 Phase : ZB-MR2 Signal #2 Phase: ZB-MR1
 Signal #1 Info : 30M x 0.32mm x0.2 Signal #2 Info : 30M x 0.32mm x0.5µm

	Compound	RT#1	RT#2	Resp#1	Resp#2	ng/ml	ng/ml

System Monitoring Compounds							
1)	SA Tetrachlo...	5.641	4.640	12493119	33052291	21.256	20.864
28)	SA Decachlor...	11.638	10.387	12428168	29302510	23.179	21.353
Target Compounds							
2)	A alpha-BHC	6.225	5.342	50136258	131.8E6	60.751	60.893
3)	MA gamma-BHC...	6.624	5.762	47147905	122.9E6	60.240	58.525
4)	MA Heptachlor	7.279	6.171	46676342	116.9E6	58.279	57.338
5)	MB Aldrin	7.652	6.495	45604762	116.2E6	62.540	60.218
6)	B beta-BHC	6.875	6.140	20758182	51139381	55.756	52.689
7)	B delta-BHC	7.146	6.401	44600981	117.7E6	58.083	54.880
8)	B Heptachlo...	8.120	7.069	41363118	104.7E6	60.587	57.273
9)	A Endosulfan I	8.529	7.472	37177490	95750327	59.193	56.661
10)	B gamma-Chl...	8.391	7.346	40972665	106.3E6	60.752	57.820
11)	B alpha-Chl...	8.473	7.415	40849910	104.9E6	60.288	57.407
12)	B 4,4'-DDE	8.659	7.627	36361506	94992942	62.504	58.324
13)	MA Dieldrin	8.820	7.757	40339695	103.8E6	63.657	59.801
14)	MA Endrin	9.061	8.047	31957880	85932555	60.181	55.202
15)	B Endosulfa...	9.294	8.357	34850126	87537415	61.743	55.602
16)	A 4,4'-DDD	9.200	8.211	30774539	79147482	62.225	59.211
17)	MA 4,4'-DDT	9.521	8.471	31457981	77795931	54.008	54.397
18)	B Endrin al...	9.429	8.544	29602489	71310334	67.358	59.151
19)	B Endosulfa...	9.668	8.775	33503806	83202063	60.231	55.587
20)	A Methoxychlor	10.006	9.065	18121747	43634049	59.166	53.733
21)	B Endrin ke...	10.170	9.293	38292258	93024409	62.370	58.171
22)	Mirex	10.643	9.481	28020849	68210214	57.805	53.641

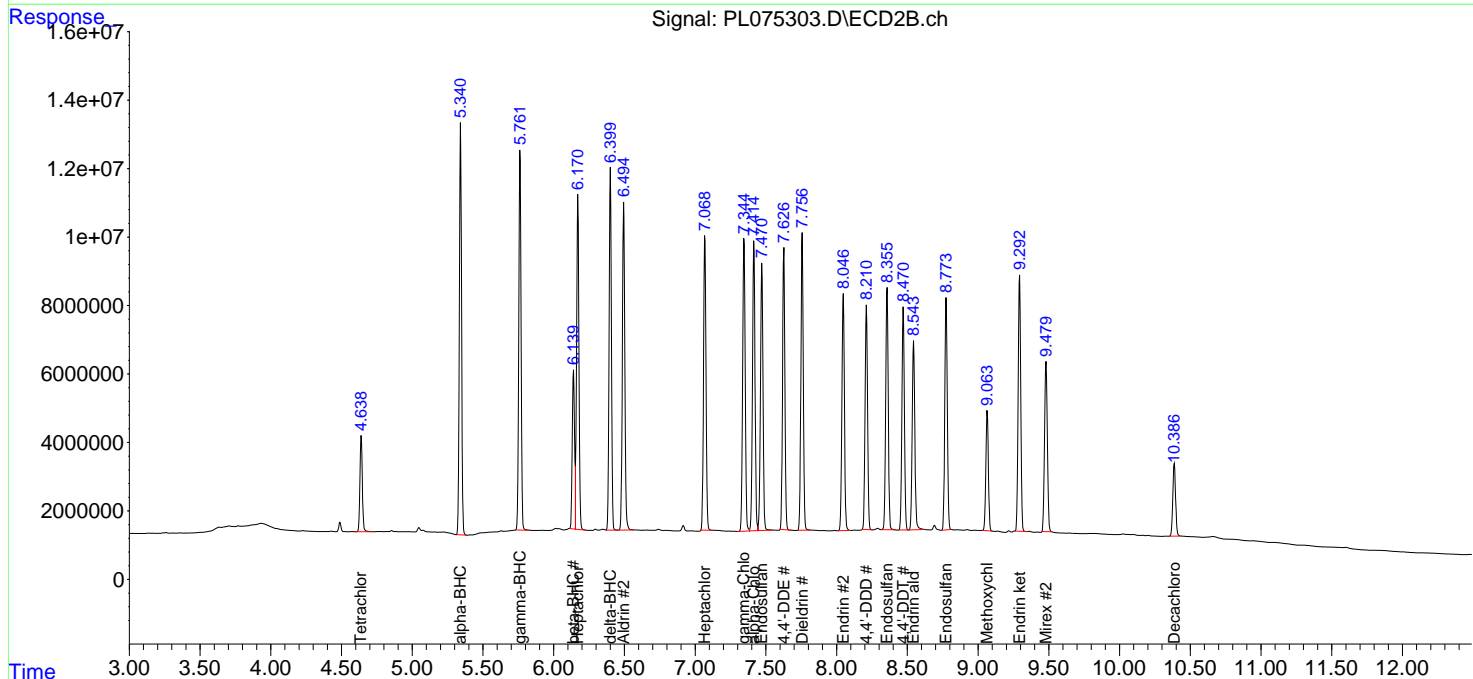
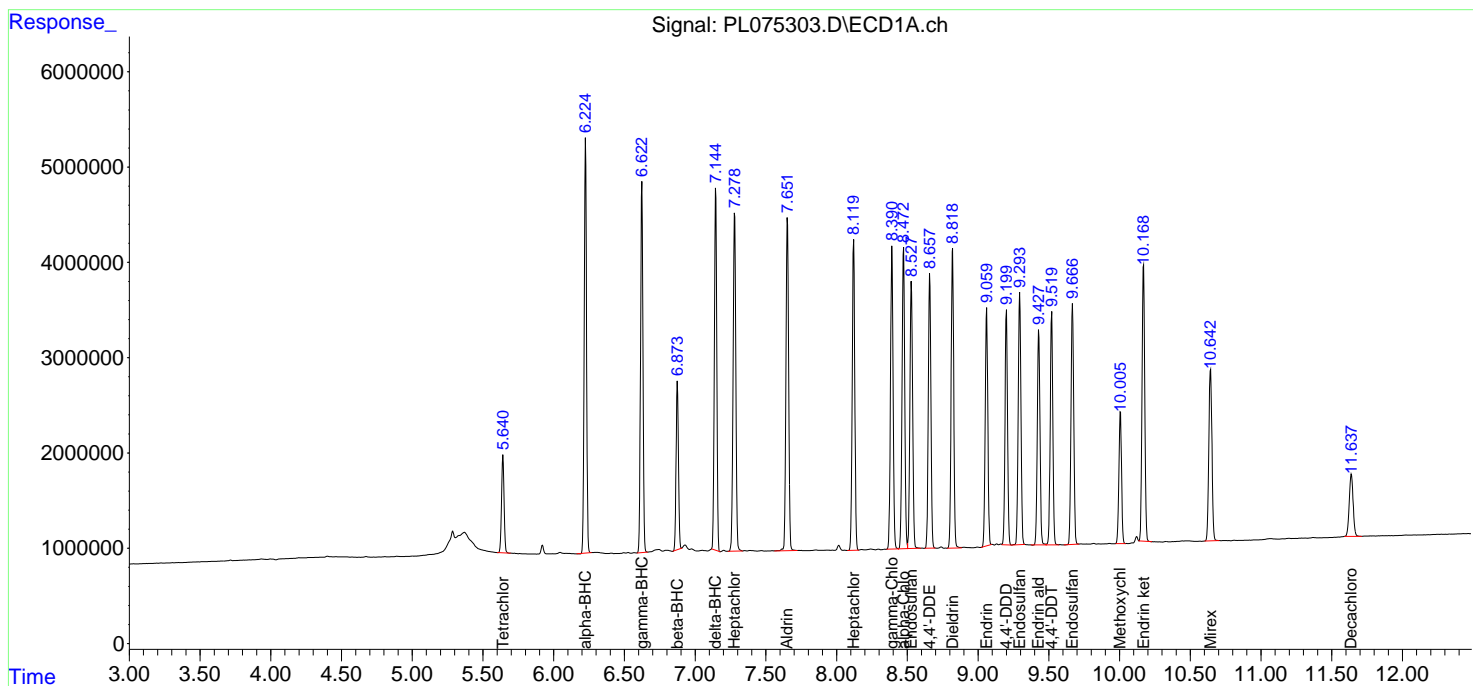
(f)=RT Delta > 1/2 Window (#)=Amounts differ by > 25% (m)=manual int.

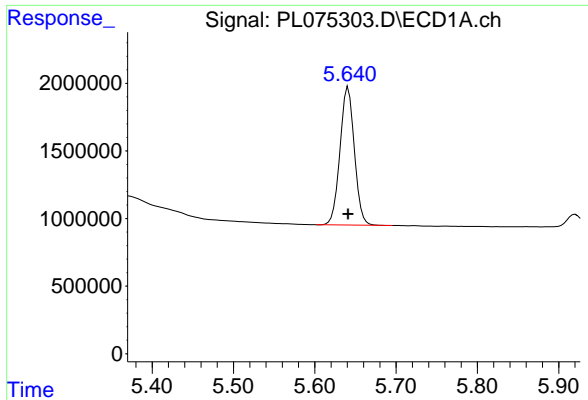
Data Path : Z:\pestpcbsrv\HPCHEM1\ECD_L\Data\PL053122\
 Data File : PL075303.D
 Signal(s) : Signal #1: ECD1A.ch Signal #2: ECD2B.ch
 Acq On : 31 May 2022 21:11
 Operator : AR\AJ
 Sample : N3070-02MSD
 Misc :
 ALS Vial : 19 Sample Multiplier: 1

Instrument :
 ECD_L
 ClientSampleId :
 SC1MSD

Integration File signal 1: autoint1.e
 Integration File signal 2: autoint2.e
 Quant Time: Jun 01 07:44:37 2022
 Quant Method : Z:\pestpcbsrv\HPCHEM1\ECD_L\methods\PL052822.M
 Quant Title : GC Extractables
 QLast Update : Tue May 31 02:52:42 2022
 Response via : Initial Calibration
 Integrator: ChemStation

Volume Inj. : 1 µl
 Signal #1 Phase : ZB-MR2 Signal #2 Phase: ZB-MR1
 Signal #1 Info : 30M x 0.32mm x0.2 Signal #2 Info : 30M x 0.32mm x0.5µm

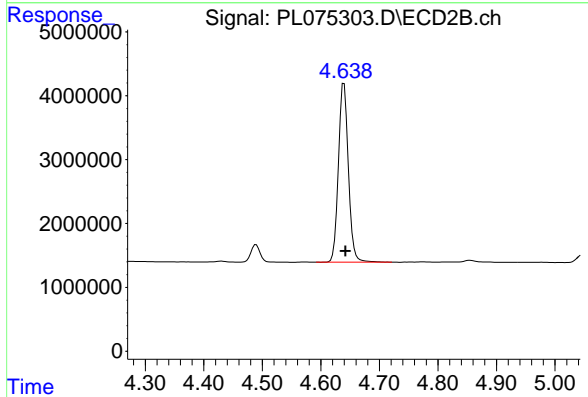




#1 Tetrachloro-m-xylene

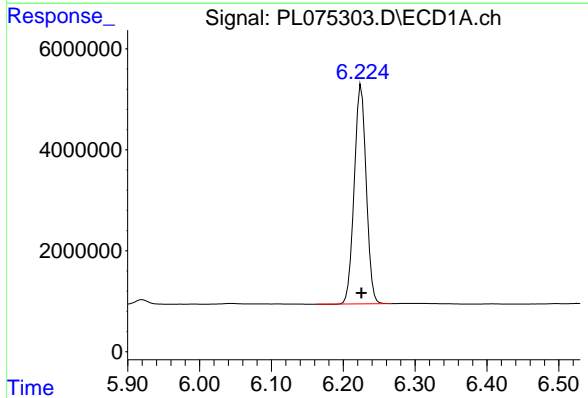
R.T.: 5.641 min
 Delta R.T.: 0.000 min
 Response: 12493119
 Conc: 21.26 ng/ml

Instrument :
 ECD_L
 ClientSampleId :
 SC1MSD



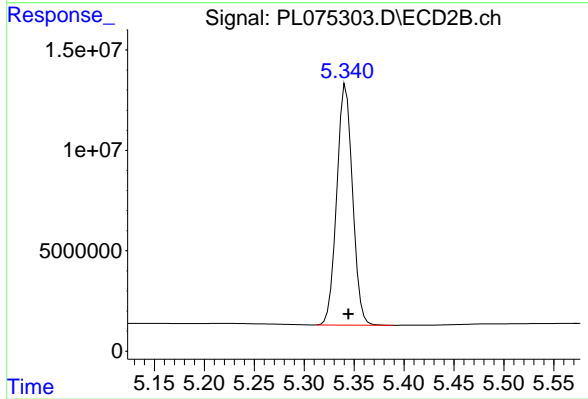
#1 Tetrachloro-m-xylene

R.T.: 4.640 min
 Delta R.T.: -0.002 min
 Response: 33052291
 Conc: 20.86 ng/ml



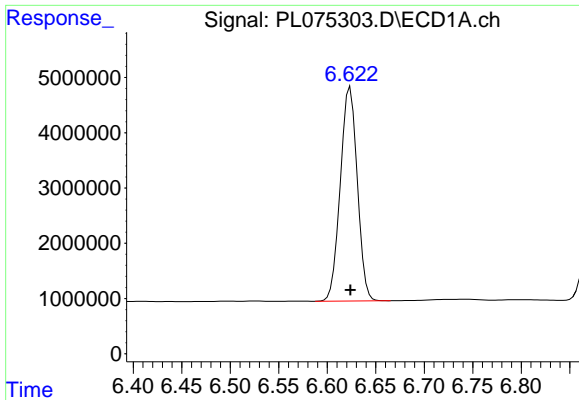
#2 alpha-BHC

R.T.: 6.225 min
 Delta R.T.: 0.000 min
 Response: 50136258
 Conc: 60.75 ng/ml



#2 alpha-BHC

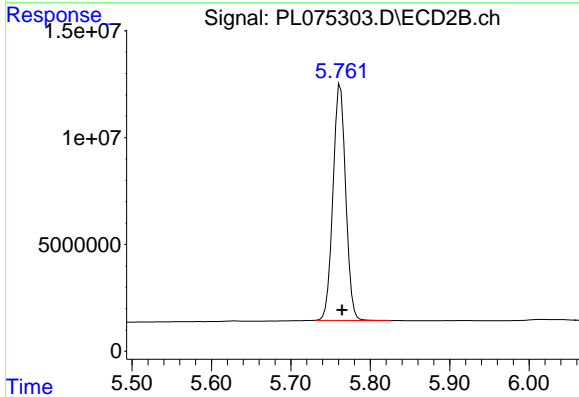
R.T.: 5.342 min
 Delta R.T.: -0.002 min
 Response: 131789910
 Conc: 60.89 ng/ml



#3 gamma-BHC (Lindane)

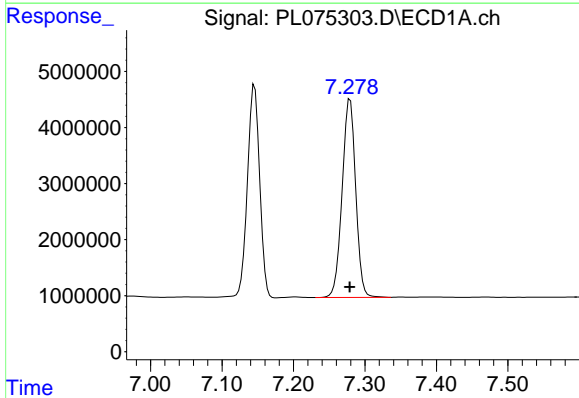
R.T.: 6.624 min
 Delta R.T.: 0.000 min
 Response: 47147905
 Conc: 60.24 ng/ml

Instrument :
 ECD_L
 ClientSampleId :
 SC1MSD



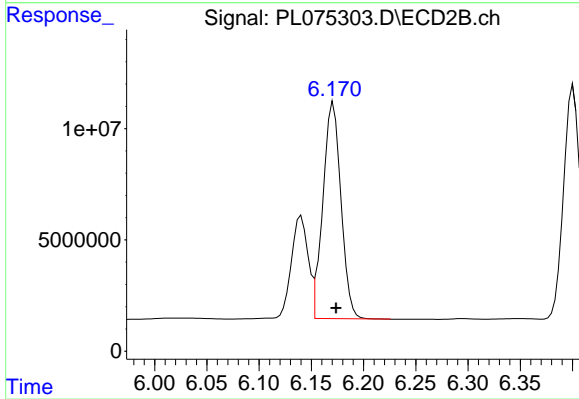
#3 gamma-BHC (Lindane)

R.T.: 5.762 min
 Delta R.T.: -0.002 min
 Response: 122911542
 Conc: 58.52 ng/ml



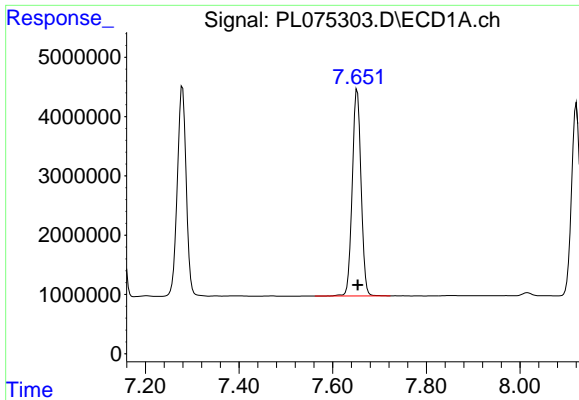
#4 Heptachlor

R.T.: 7.279 min
 Delta R.T.: 0.000 min
 Response: 46676342
 Conc: 58.28 ng/ml



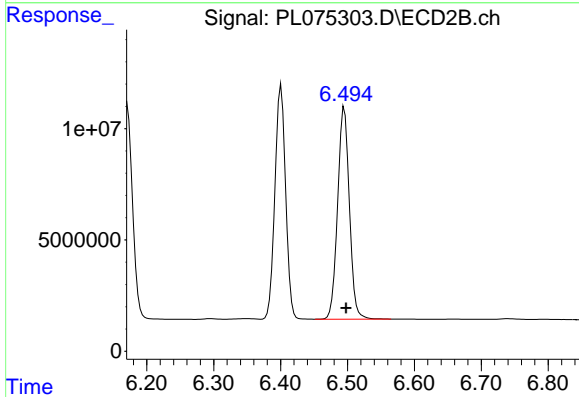
#4 Heptachlor

R.T.: 6.171 min
 Delta R.T.: -0.003 min
 Response: 116886551
 Conc: 57.34 ng/ml

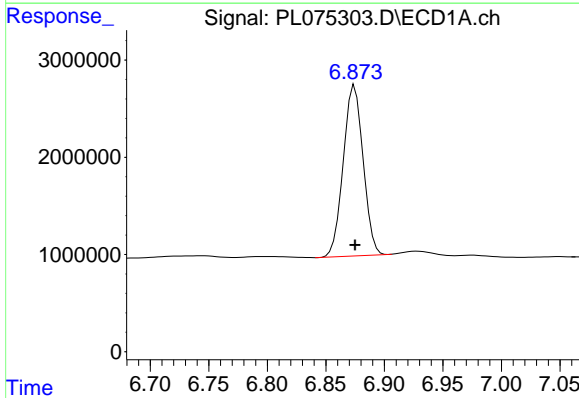


#5 Aldrin
 R.T.: 7.652 min
 Delta R.T.: -0.001 min
 Response: 45604762
 Conc: 62.54 ng/ml

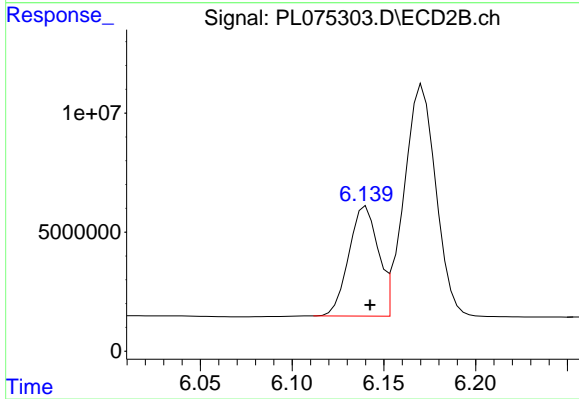
Instrument :
 ECD_L
 ClientSampleId :
 SC1MSD



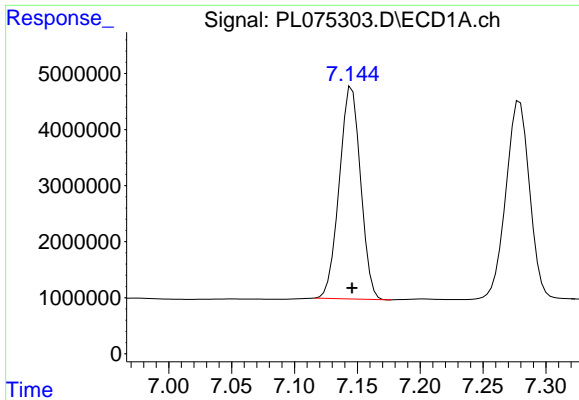
#5 Aldrin
 R.T.: 6.495 min
 Delta R.T.: -0.003 min
 Response: 116216024
 Conc: 60.22 ng/ml



#6 beta-BHC
 R.T.: 6.875 min
 Delta R.T.: 0.000 min
 Response: 20758182
 Conc: 55.76 ng/ml



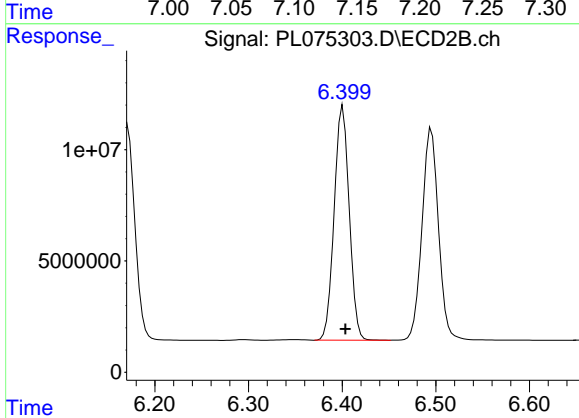
#6 beta-BHC
 R.T.: 6.140 min
 Delta R.T.: -0.002 min
 Response: 51139381
 Conc: 52.69 ng/ml



#7 delta-BHC

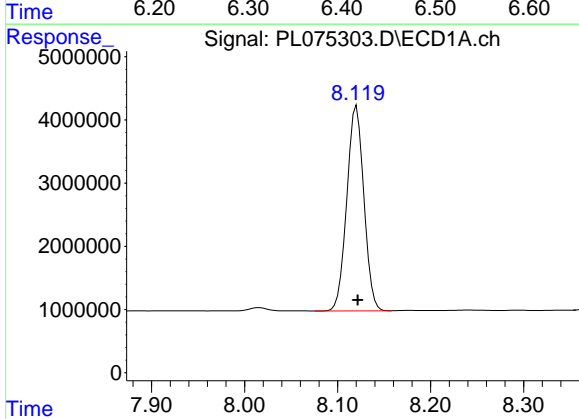
R.T.: 7.146 min
 Delta R.T.: 0.000 min
 Response: 44600981
 Conc: 58.08 ng/ml

Instrument :
 ECD_L
 ClientSampleId :
 SC1MSD



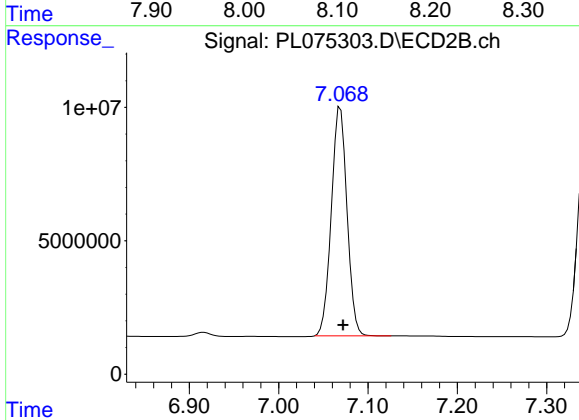
#7 delta-BHC

R.T.: 6.401 min
 Delta R.T.: -0.003 min
 Response: 117729439
 Conc: 54.88 ng/ml



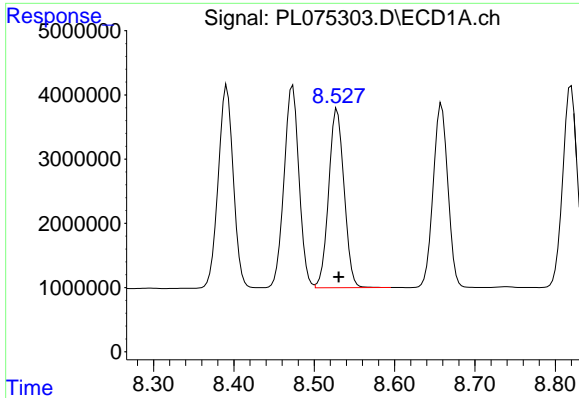
#8 Heptachlor epoxide

R.T.: 8.120 min
 Delta R.T.: -0.001 min
 Response: 41363118
 Conc: 60.59 ng/ml



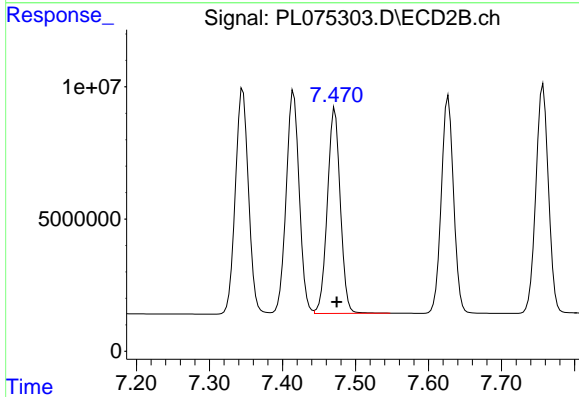
#8 Heptachlor epoxide

R.T.: 7.069 min
 Delta R.T.: -0.003 min
 Response: 104657477
 Conc: 57.27 ng/ml

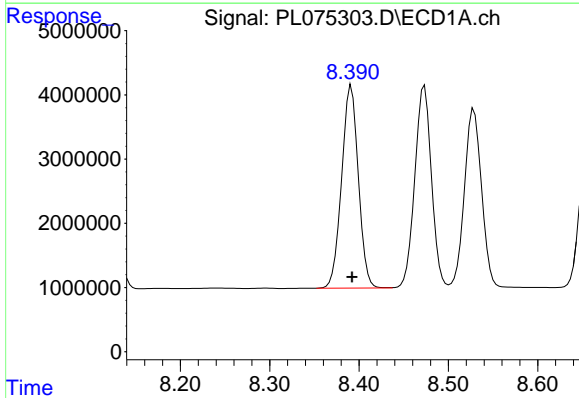


#9 Endosulfan I
 R.T.: 8.529 min
 Delta R.T.: -0.002 min
 Response: 37177490
 Conc: 59.19 ng/ml

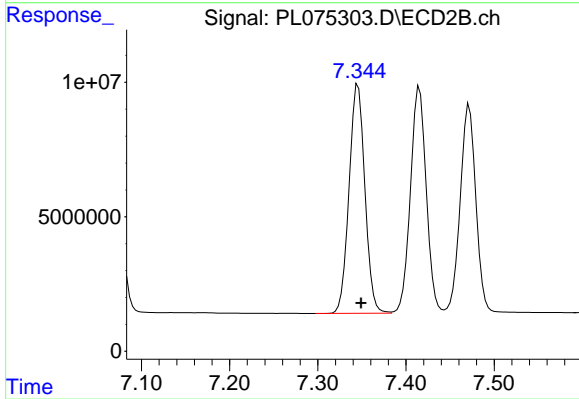
Instrument :
 ECD_L
 ClientSampleId :
 SC1MSD



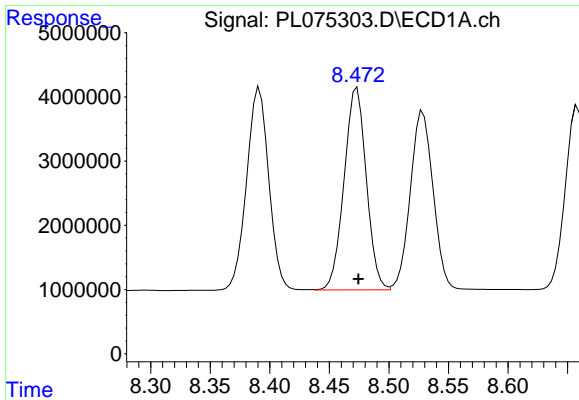
#9 Endosulfan I
 R.T.: 7.472 min
 Delta R.T.: -0.003 min
 Response: 95750327
 Conc: 56.66 ng/ml



#10 gamma-Chlordane
 R.T.: 8.391 min
 Delta R.T.: 0.000 min
 Response: 40972665
 Conc: 60.75 ng/ml



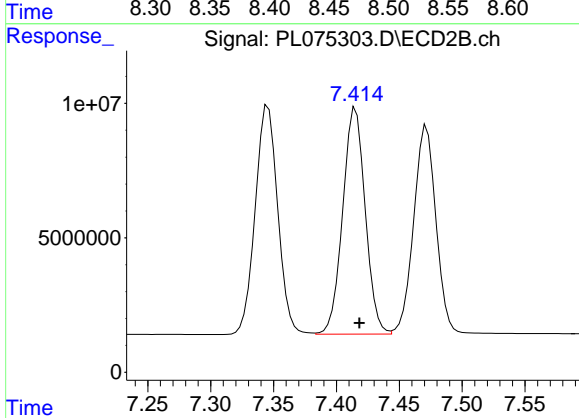
#10 gamma-Chlordane
 R.T.: 7.346 min
 Delta R.T.: -0.004 min
 Response: 106337468
 Conc: 57.82 ng/ml



#11 alpha-Chlordane

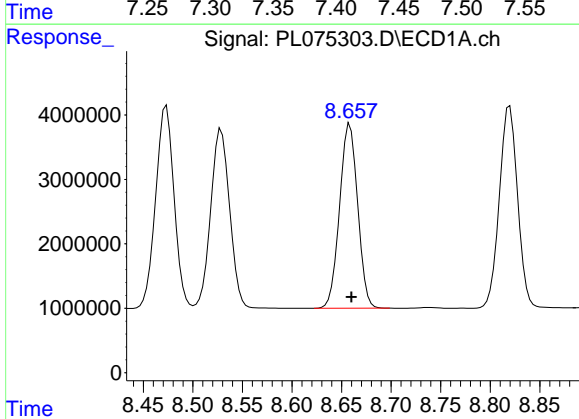
R.T.: 8.473 min
 Delta R.T.: -0.001 min
 Response: 40849910
 Conc: 60.29 ng/ml

Instrument :
 ECD_L
 ClientSampleId :
 SC1MSD



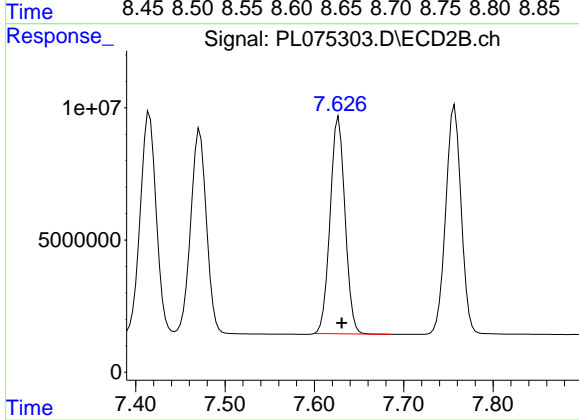
#11 alpha-Chlordane

R.T.: 7.415 min
 Delta R.T.: -0.003 min
 Response: 104898241
 Conc: 57.41 ng/ml



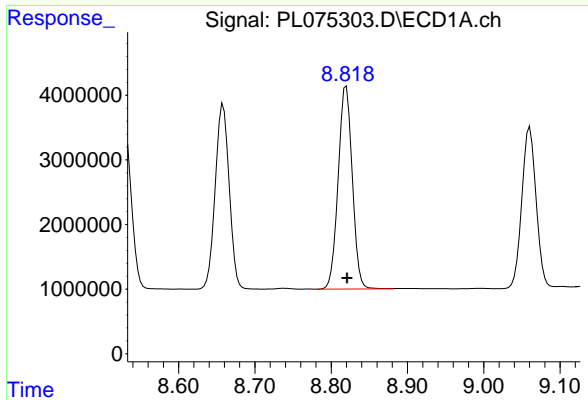
#12 4,4'-DDE

R.T.: 8.659 min
 Delta R.T.: -0.001 min
 Response: 36361506
 Conc: 62.50 ng/ml



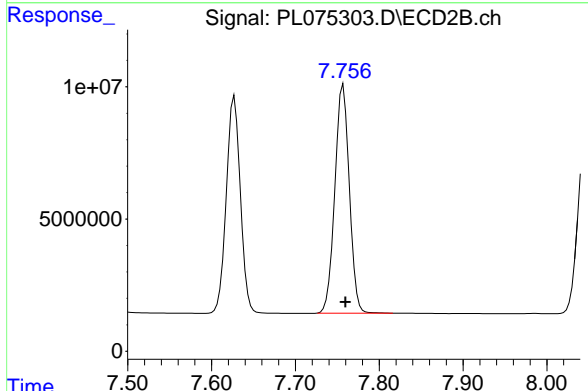
#12 4,4'-DDE

R.T.: 7.627 min
 Delta R.T.: -0.003 min
 Response: 94992942
 Conc: 58.32 ng/ml

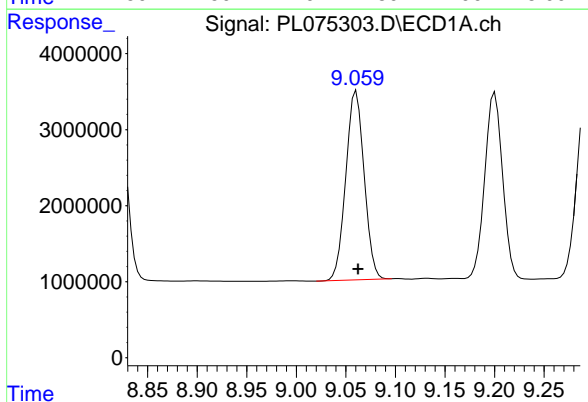


#13 Dieldrin
 R.T.: 8.820 min
 Delta R.T.: -0.001 min
 Response: 40339695
 Conc: 63.66 ng/ml

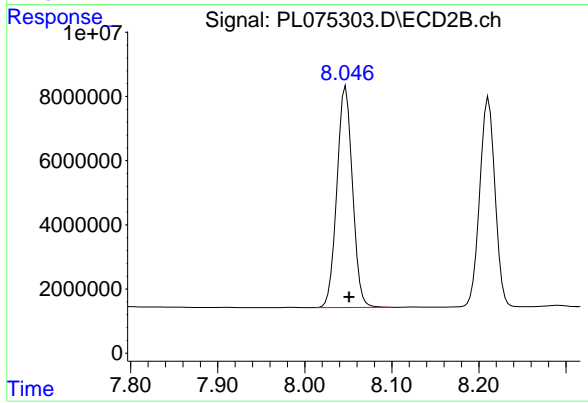
Instrument :
 ECD_L
 ClientSampleId :
 SC1MSD



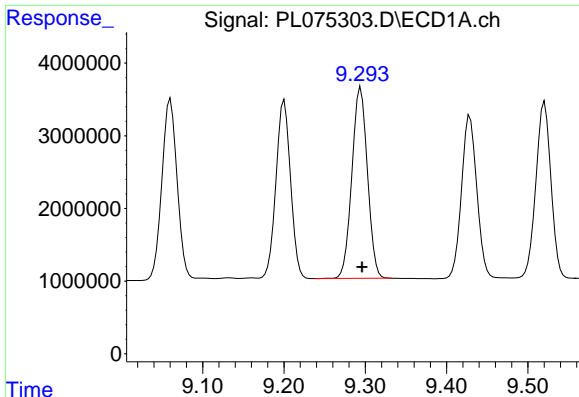
#13 Dieldrin
 R.T.: 7.757 min
 Delta R.T.: -0.003 min
 Response: 103761932
 Conc: 59.80 ng/ml



#14 Endrin
 R.T.: 9.061 min
 Delta R.T.: -0.002 min
 Response: 31957880
 Conc: 60.18 ng/ml



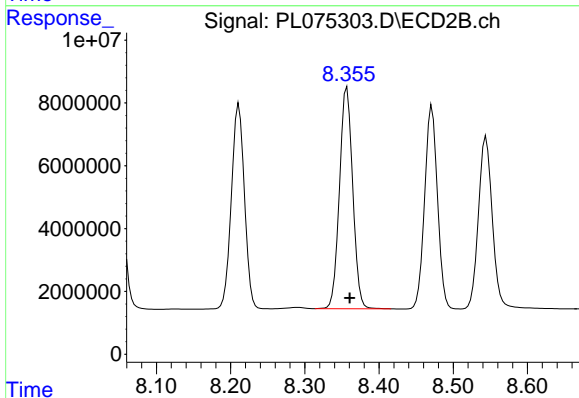
#14 Endrin
 R.T.: 8.047 min
 Delta R.T.: -0.004 min
 Response: 85932555
 Conc: 55.20 ng/ml



#15 Endosulfan II

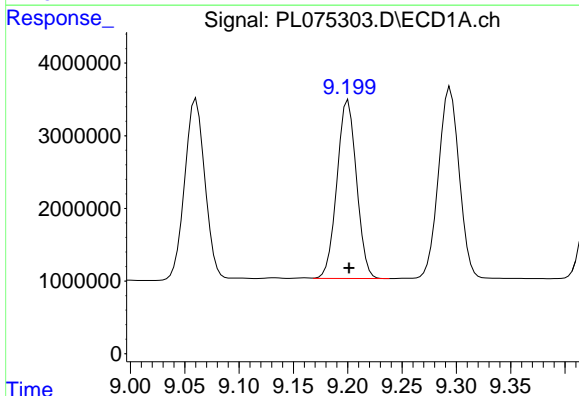
R.T.: 9.294 min
 Delta R.T.: -0.002 min
 Response: 34850126
 Conc: 61.74 ng/ml

Instrument :
 ECD_L
 ClientSampleId :
 SC1MSD



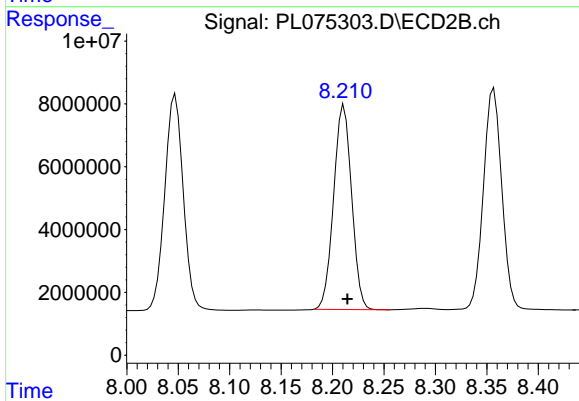
#15 Endosulfan II

R.T.: 8.357 min
 Delta R.T.: -0.004 min
 Response: 87537415
 Conc: 55.60 ng/ml



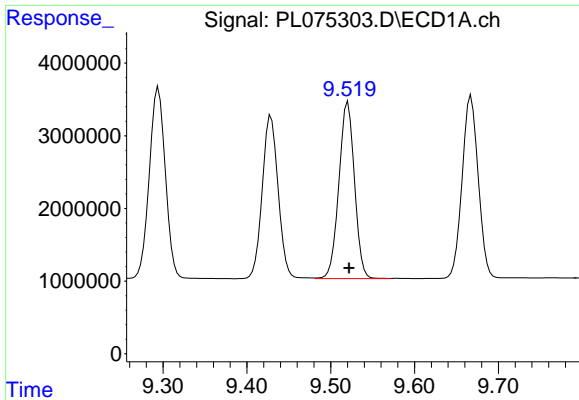
#16 4,4'-DDD

R.T.: 9.200 min
 Delta R.T.: 0.000 min
 Response: 30774539
 Conc: 62.22 ng/ml



#16 4,4'-DDD

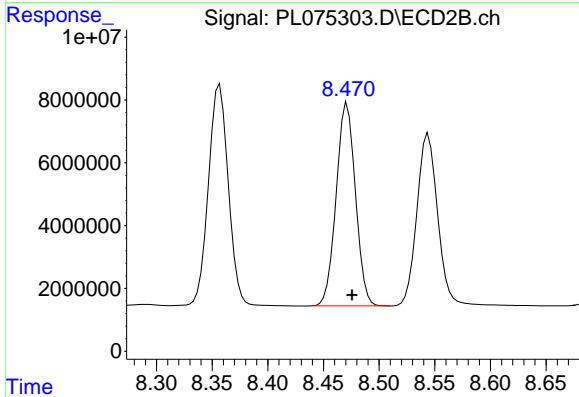
R.T.: 8.211 min
 Delta R.T.: -0.003 min
 Response: 79147482
 Conc: 59.21 ng/ml



#17 4,4'-DDT

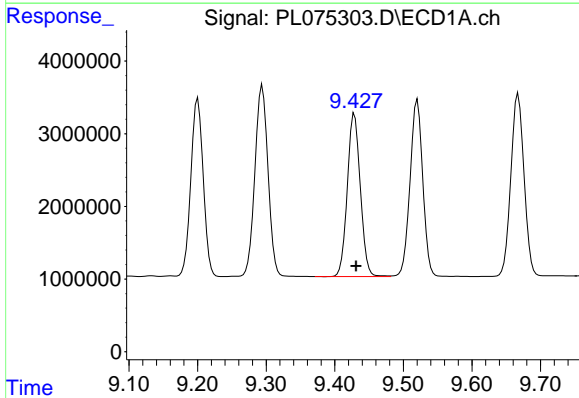
R.T.: 9.521 min
 Delta R.T.: -0.001 min
 Response: 31457981
 Conc: 54.01 ng/ml

Instrument :
 ECD_L
 ClientSampleId :
 SC1MSD



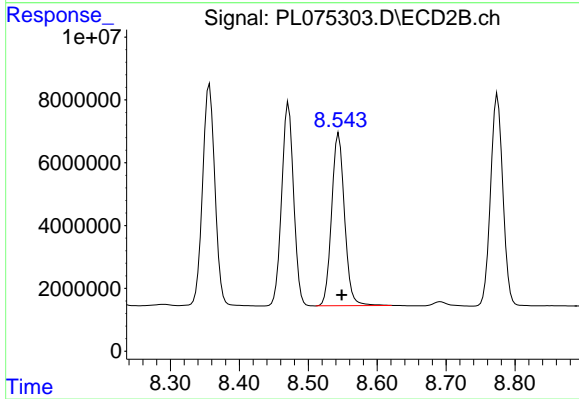
#17 4,4'-DDT

R.T.: 8.471 min
 Delta R.T.: -0.004 min
 Response: 77795931
 Conc: 54.40 ng/ml



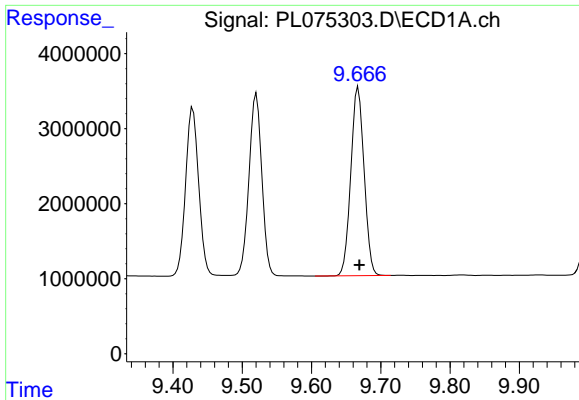
#18 Endrin aldehyde

R.T.: 9.429 min
 Delta R.T.: -0.002 min
 Response: 29602489
 Conc: 67.36 ng/ml



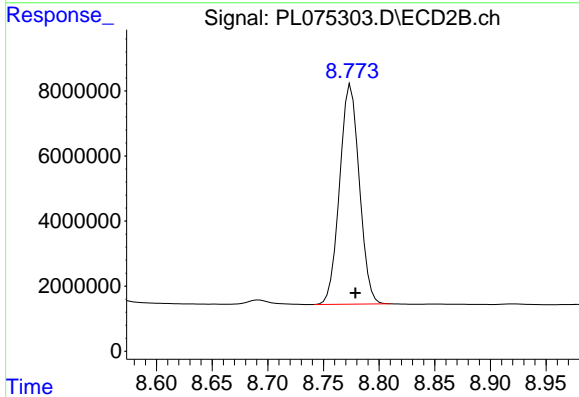
#18 Endrin aldehyde

R.T.: 8.544 min
 Delta R.T.: -0.004 min
 Response: 71310334
 Conc: 59.15 ng/ml

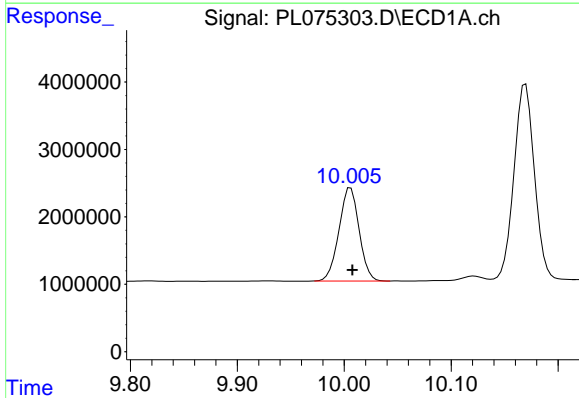


#19 Endosulfan Sulfate
 R.T.: 9.668 min
 Delta R.T.: -0.002 min
 Response: 33503806
 Conc: 60.23 ng/ml

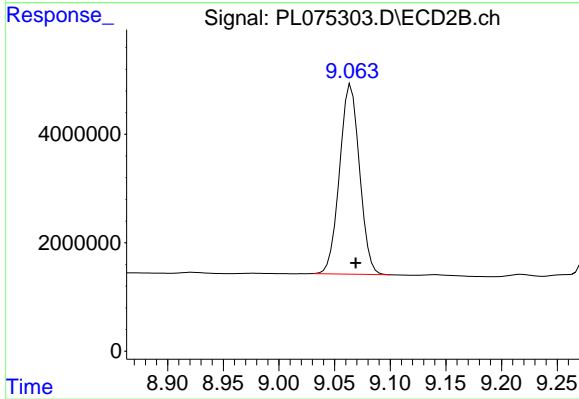
Instrument :
 ECD_L
 ClientSampleId :
 SC1MSD



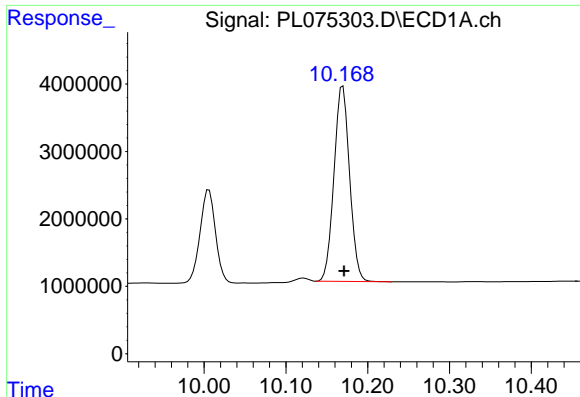
#19 Endosulfan Sulfate
 R.T.: 8.775 min
 Delta R.T.: -0.004 min
 Response: 83202063
 Conc: 55.59 ng/ml



#20 Methoxychlor
 R.T.: 10.006 min
 Delta R.T.: -0.001 min
 Response: 18121747
 Conc: 59.17 ng/ml



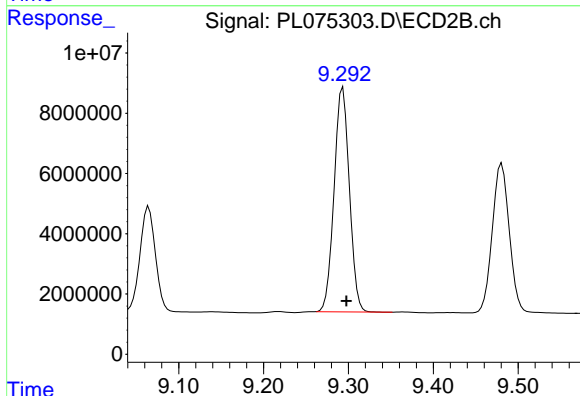
#20 Methoxychlor
 R.T.: 9.065 min
 Delta R.T.: -0.004 min
 Response: 43634049
 Conc: 53.73 ng/ml



#21 Endrin ketone

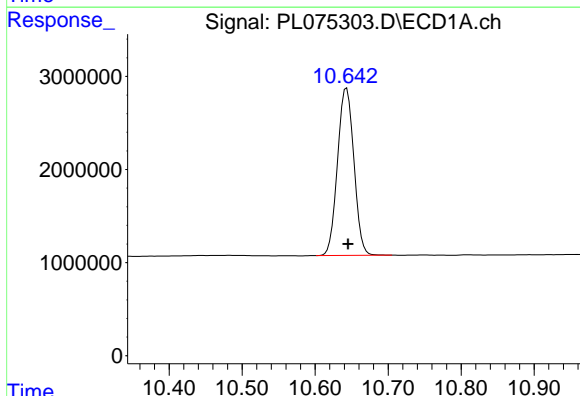
R.T.: 10.170 min
 Delta R.T.: -0.002 min
 Response: 38292258
 Conc: 62.37 ng/ml

Instrument :
 ECD_L
 ClientSampleId :
 SC1MSD



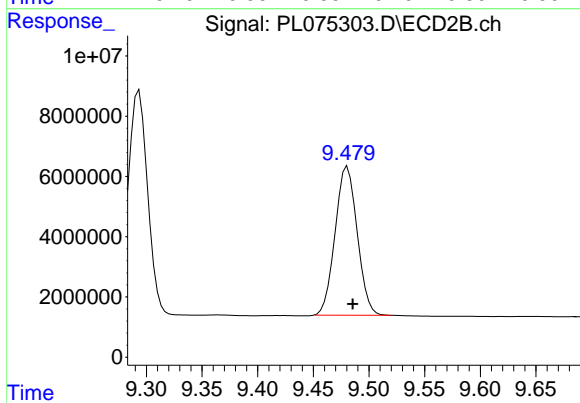
#21 Endrin ketone

R.T.: 9.293 min
 Delta R.T.: -0.004 min
 Response: 93024409
 Conc: 58.17 ng/ml



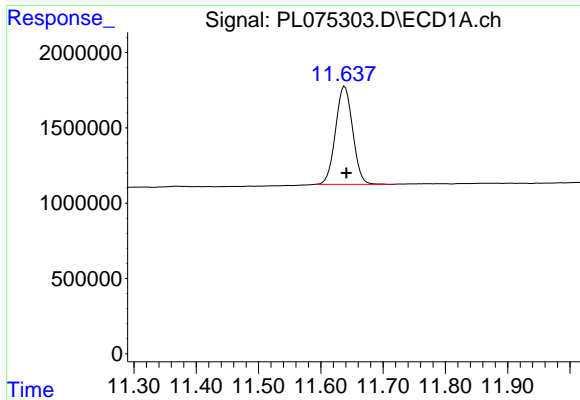
#22 Mirex

R.T.: 10.643 min
 Delta R.T.: -0.002 min
 Response: 28020849
 Conc: 57.80 ng/ml



#22 Mirex

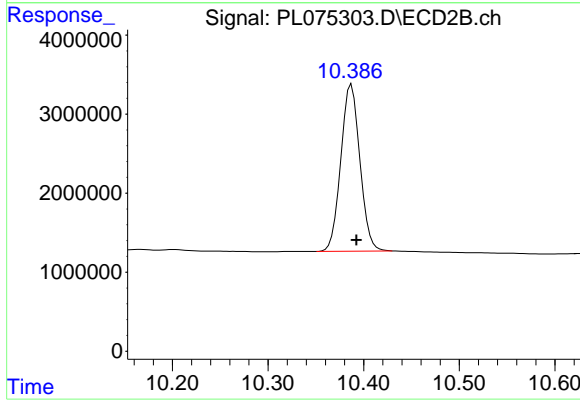
R.T.: 9.481 min
 Delta R.T.: -0.005 min
 Response: 68210214
 Conc: 53.64 ng/ml



#28 Decachlorobiphenyl

R.T.: 11.638 min
Delta R.T.: -0.003 min
Response: 12428168
Conc: 23.18 ng/ml

Instrument :
ECD_L
ClientSampleId :
SC1MSD



#28 Decachlorobiphenyl

R.T.: 10.387 min
Delta R.T.: -0.005 min
Response: 29302510
Conc: 21.35 ng/ml