

Data Path : Z:\pestpcbsrv\HPCHEM1\ECD_L\Data\PL053123\
 Data File : PL083105.D
 Signal(s) : Signal #1: ECD1A.ch Signal #2: ECD2B.ch
 Acq On : 31 May 2023 08:00
 Operator : AR\AJ
 Sample : HEXANE
 Misc :
 ALS Vial : 1 Sample Multiplier: 1

Instrument :
 ECD_L
 ClientSampleId :

Integration File signal 1: autoint1.e
 Integration File signal 2: autoint2.e
 Quant Time: Jun 01 05:03:51 2023
 Quant Method : Z:\pestpcbsrv\HPCHEM1\ECD_L\methods\PL051923.M
 Quant Title : GC Extractables
 QLast Update : Sat May 20 04:58:53 2023
 Response via : Initial Calibration
 Integrator: ChemStation

Volume Inj. : 1 µl
 Signal #1 Phase : ZB-MR2 Signal #2 Phase: ZB-MR1
 Signal #1 Info : 30M x 0.32mm x0.2 Signal #2 Info : 30M x 0.32mm x0.5µm

Compound	RT#1	RT#2	Resp#1	Resp#2	ng/ml	ng/ml

System Monitoring Compounds						
1) SA Tetrachlo...	0.000	2.642	0	237939	N.D.	0.092 #
2) SA Decachlor...	0.000	7.728	0	33288	N.D.	0.013 #
Target Compounds						
3) MA gamma-BHC...	4.091	0.000	327953	0	0.079	N.D. #
4) MA Heptachlor	4.660f	3.764f	203028	135566	0.053	0.037 #
6) B beta-BHC	0.000	3.764	0	135566	N.D.	0.095 #
7) B delta-BHC	4.541	3.982	1318624	40696	0.383	0.012 #
8) B Heptachlo...	5.437	4.573	1643614	48289	0.514	0.016 #
9) A Endosulfan I	5.813	4.961f	1467511	183814	0.489	0.066 #
10) B gamma-Chl...	0.000	4.812	0	274246	N.D.	0.091 #
11) B alpha-Chl...	5.776	4.887	1533085	347140	0.478	0.116 #
13) MA Dieldrin	0.000	5.195	0	64278	N.D.	0.023 #
14) MA Endrin	0.000	5.500f	0	452191	N.D.	0.178 #
17) MA 4,4'-DDT	6.794f	5.872	101858	57722	0.041	0.026 #
18) B Endrin al...	0.000	5.950	0	163075	N.D.	0.082 #
19) B Endosulfa...	0.000	6.172	0	17780	N.D.	0.007 #
21) B Endrin ke...	7.383	6.691	74214	81210	0.029	0.030
22) Mirex	7.866	6.855	176549	7711	0.084	0.003 #
23) Chlordane-1	4.431f	3.634	332477	52967	3.039	0.642 #
25) Chlordane-3	0.000	4.812	0	274246	N.D.	1.029 #
26) Chlordane-4	5.776	4.887	1533085	347140	3.028	1.232 #
27) Chlordane-5	0.000	5.774	0	224668	N.D.	2.313 #

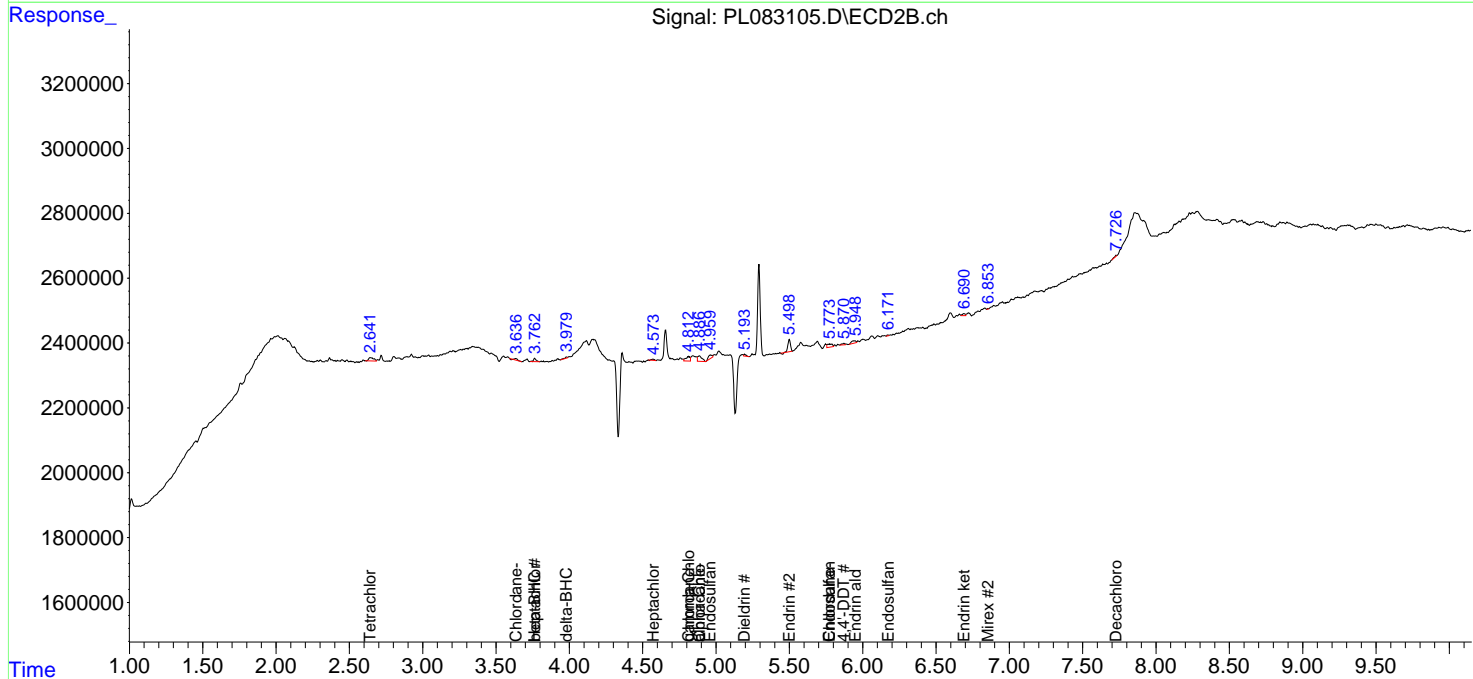
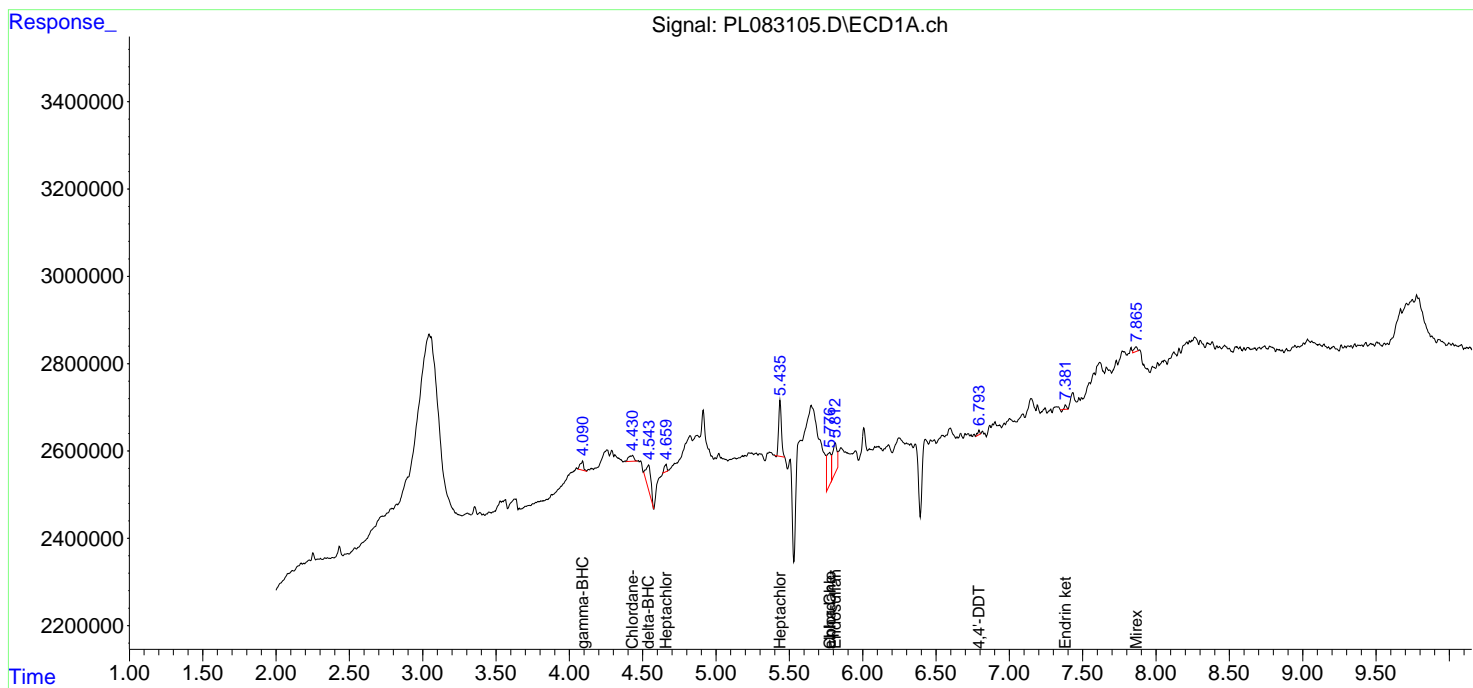
(f)=RT Delta > 1/2 Window (#)=Amounts differ by > 25% (m)=manual int.

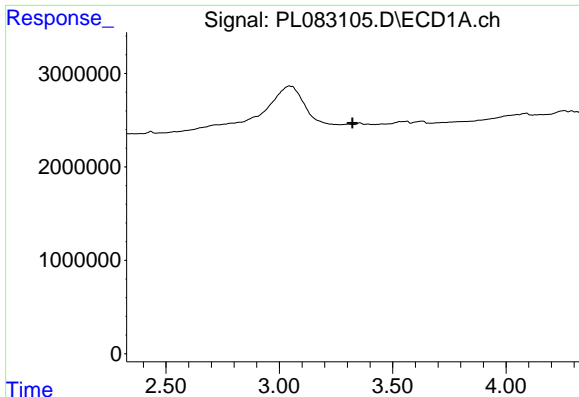
Data Path : Z:\pestpcbsrv\HPCHEM1\ECD_L\Data\PL053123\
 Data File : PL083105.D
 Signal(s) : Signal #1: ECD1A.ch Signal #2: ECD2B.ch
 Acq On : 31 May 2023 08:00
 Operator : AR\AJ
 Sample : HEXANE
 Misc :
 ALS Vial : 1 Sample Multiplier: 1

Instrument :
 ECD_L
 ClientSampleId :

Integration File signal 1: autoint1.e
 Integration File signal 2: autoint2.e
 Quant Time: Jun 01 05:03:51 2023
 Quant Method : Z:\pestpcbsrv\HPCHEM1\ECD_L\methods\PL051923.M
 Quant Title : GC Extractables
 QLast Update : Sat May 20 04:58:53 2023
 Response via : Initial Calibration
 Integrator: ChemStation

Volume Inj. : 1 µl
 Signal #1 Phase : ZB-MR2 Signal #2 Phase: ZB-MR1
 Signal #1 Info : 30M x 0.32mm x0.2 Signal #2 Info : 30M x 0.32mm x0.5µm

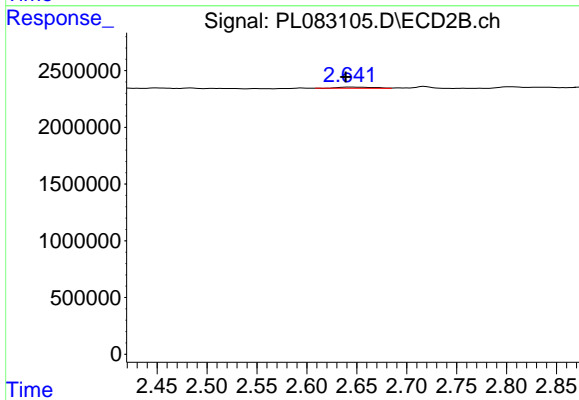




#1 Tetrachloro-m-xylene

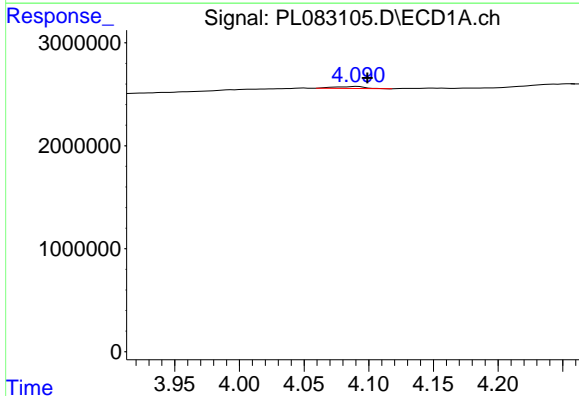
R.T.: 0.000 min
 Exp R.T.: 3.323 min
 Response: 0
 Conc: N.D.

Instrument :
 ECD_L
 ClientSampleId :



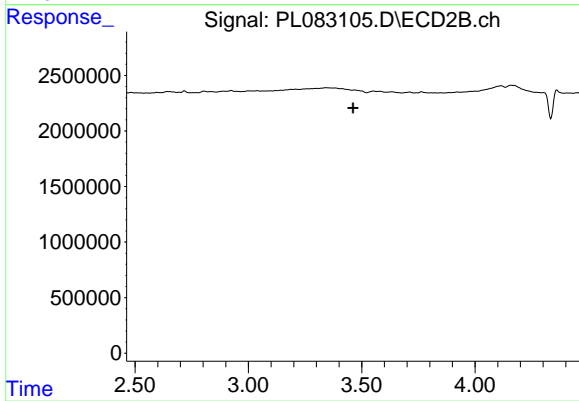
#1 Tetrachloro-m-xylene

R.T.: 2.642 min
 Delta R.T.: 0.003 min
 Response: 237939
 Conc: 0.09 ng/ml



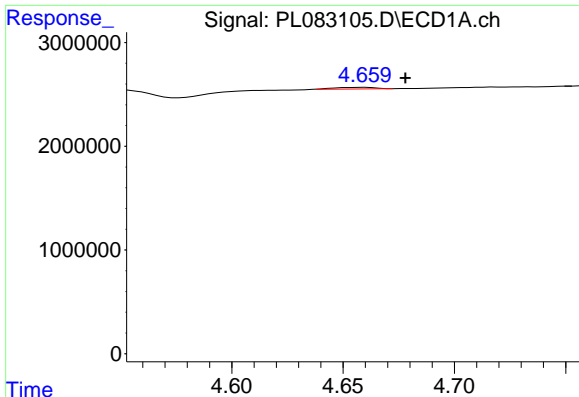
#3 gamma-BHC (Lindane)

R.T.: 4.091 min
 Delta R.T.: -0.008 min
 Response: 327953
 Conc: 0.08 ng/ml



#3 gamma-BHC (Lindane)

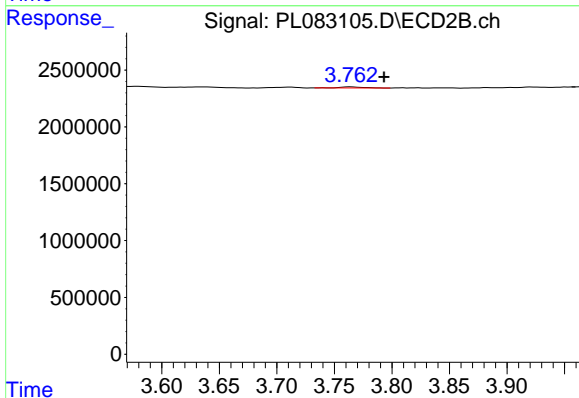
R.T.: 0.000 min
 Exp R.T.: 3.462 min
 Response: 0
 Conc: N.D.



#4 Heptachlor

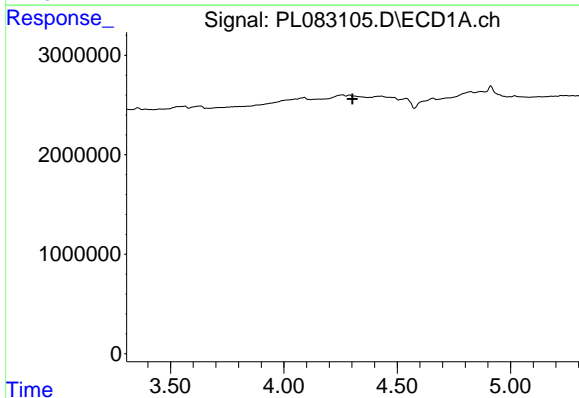
R.T.: 4.660 min
 Delta R.T.: -0.018 min
 Response: 203028
 Conc: 0.05 ng/ml

Instrument :
 ECD_L
 ClientSampleId :



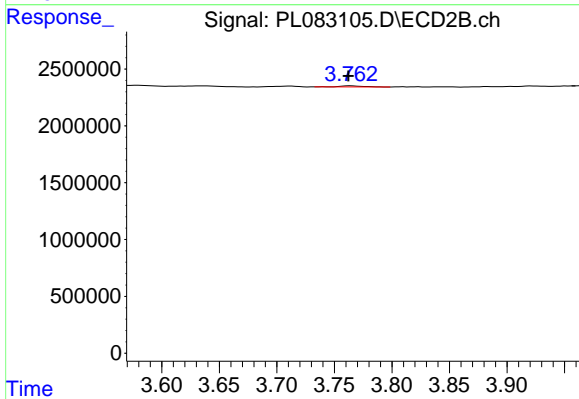
#4 Heptachlor

R.T.: 3.764 min
 Delta R.T.: -0.030 min
 Response: 135566
 Conc: 0.04 ng/ml



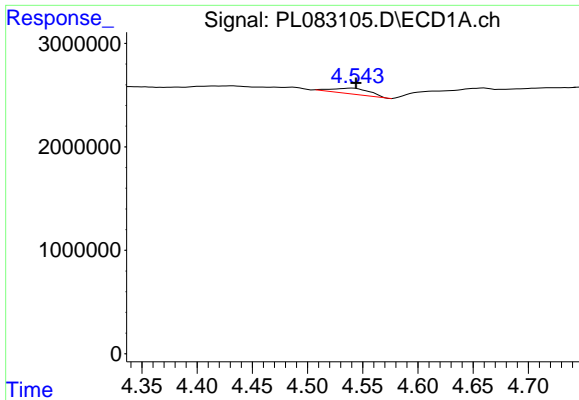
#6 beta-BHC

R.T.: 0.000 min
 Exp R.T. : 4.303 min
 Response: 0
 Conc: N.D.



#6 beta-BHC

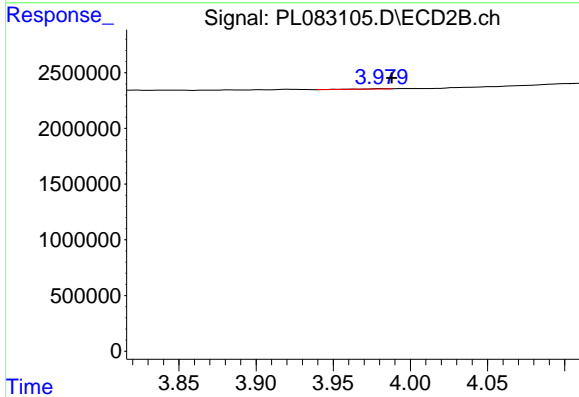
R.T.: 3.764 min
 Delta R.T.: 0.001 min
 Response: 135566
 Conc: 0.09 ng/ml



#7 delta-BHC

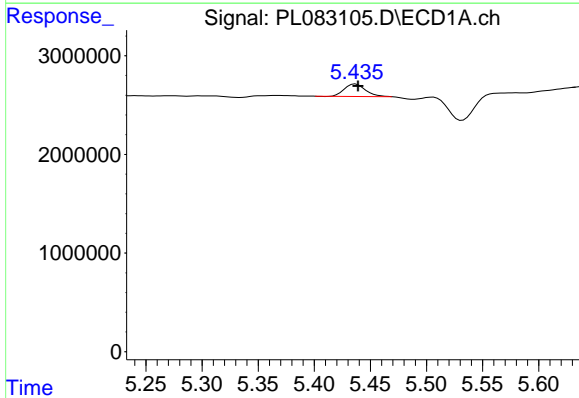
R.T.: 4.541 min
 Delta R.T.: -0.003 min
 Response: 1318624
 Conc: 0.38 ng/ml

Instrument :
 ECD_L
 ClientSampleId :



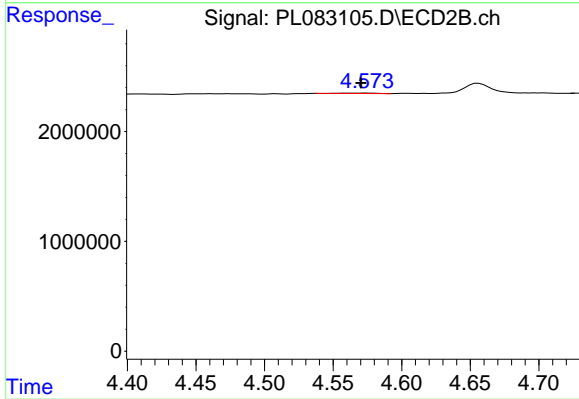
#7 delta-BHC

R.T.: 3.982 min
 Delta R.T.: -0.006 min
 Response: 40696
 Conc: 0.01 ng/ml



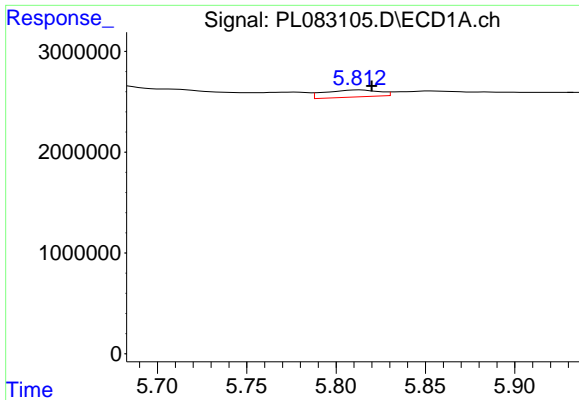
#8 Heptachlor epoxide

R.T.: 5.437 min
 Delta R.T.: -0.002 min
 Response: 1643614
 Conc: 0.51 ng/ml



#8 Heptachlor epoxide

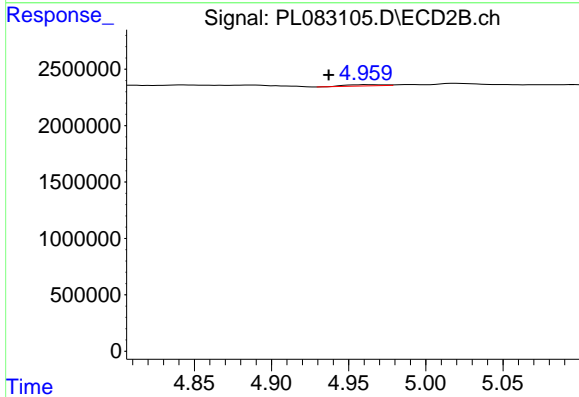
R.T.: 4.573 min
 Delta R.T.: 0.003 min
 Response: 48289
 Conc: 0.02 ng/ml



#9 Endosulfan I

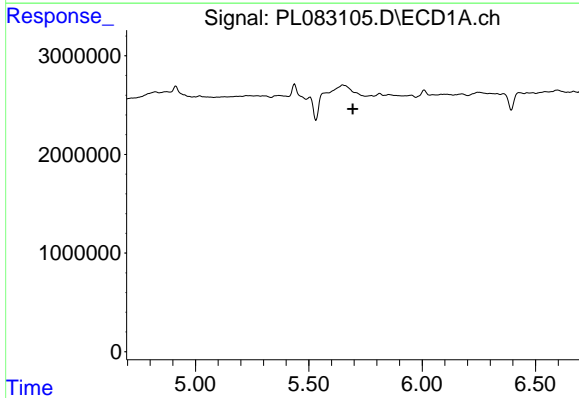
R.T.: 5.813 min
 Delta R.T.: -0.007 min
 Response: 1467511
 Conc: 0.49 ng/ml

Instrument :
 ECD_L
 ClientSampleId :



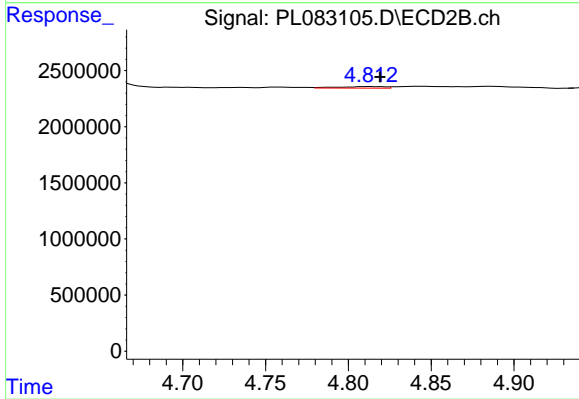
#9 Endosulfan I

R.T.: 4.961 min
 Delta R.T.: 0.024 min
 Response: 183814
 Conc: 0.07 ng/ml



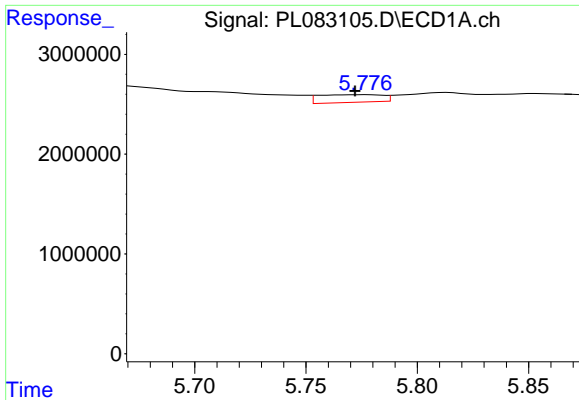
#10 gamma-Chlordane

R.T.: 0.000 min
 Exp R.T. : 5.694 min
 Response: 0
 Conc: N.D.



#10 gamma-Chlordane

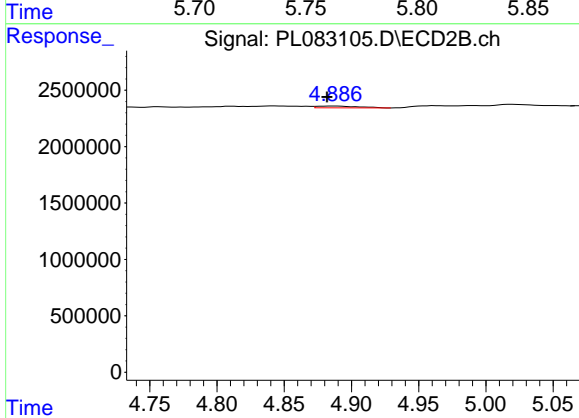
R.T.: 4.812 min
 Delta R.T.: -0.007 min
 Response: 274246
 Conc: 0.09 ng/ml



#11 alpha-Chlordane

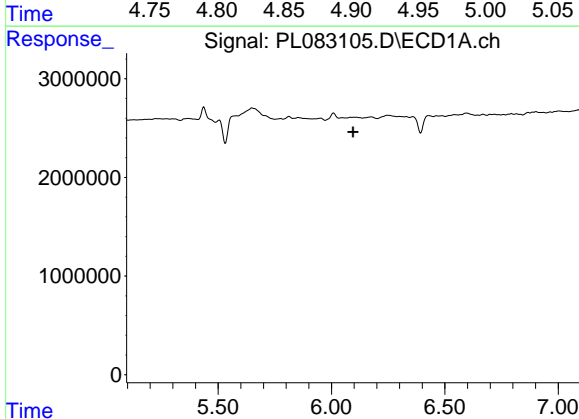
R.T.: 5.776 min
 Delta R.T.: 0.004 min
 Response: 1533085
 Conc: 0.48 ng/ml

Instrument :
 ECD_L
 ClientSampleId :



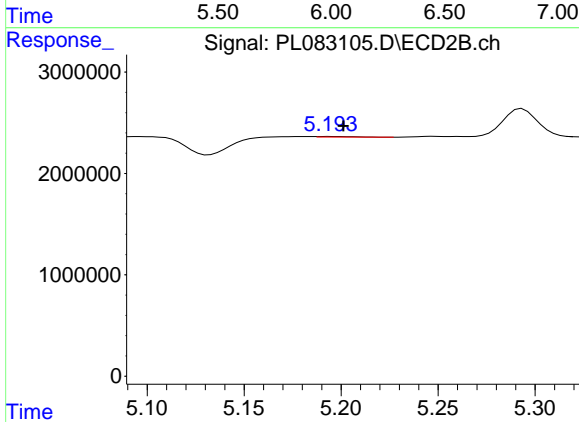
#11 alpha-Chlordane

R.T.: 4.887 min
 Delta R.T.: 0.005 min
 Response: 347140
 Conc: 0.12 ng/ml



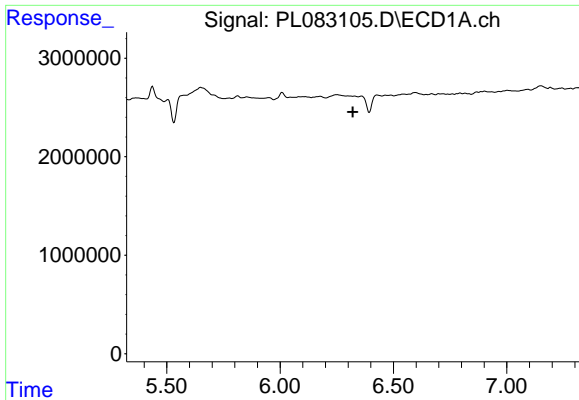
#13 Dieldrin

R.T.: 0.000 min
 Exp R.T. : 6.095 min
 Response: 0
 Conc: N.D.



#13 Dieldrin

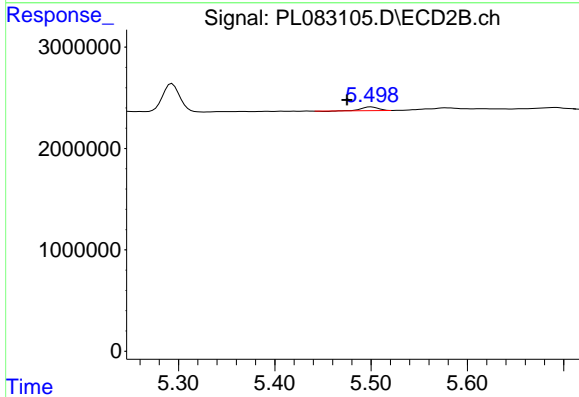
R.T.: 5.195 min
 Delta R.T.: -0.007 min
 Response: 64278
 Conc: 0.02 ng/ml



#14 Endrin

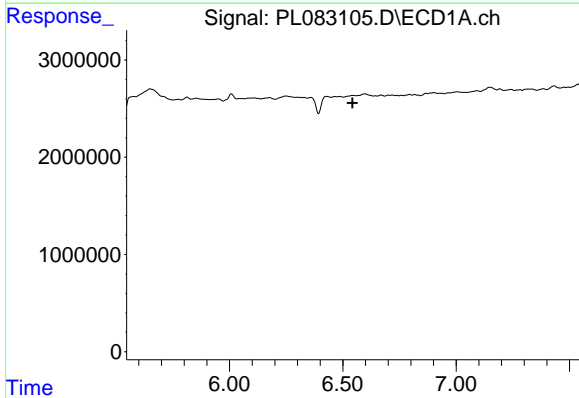
R.T.: 0.000 min
 Exp R.T.: 6.321 min
 Response: 0
 Conc: N.D.

Instrument :
 ECD_L
 ClientSampleId :



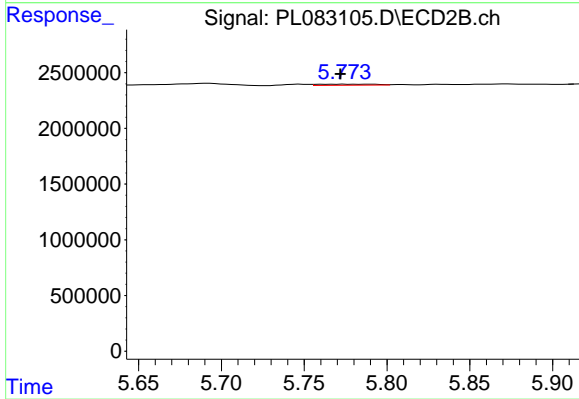
#14 Endrin

R.T.: 5.500 min
 Delta R.T.: 0.025 min
 Response: 452191
 Conc: 0.18 ng/ml



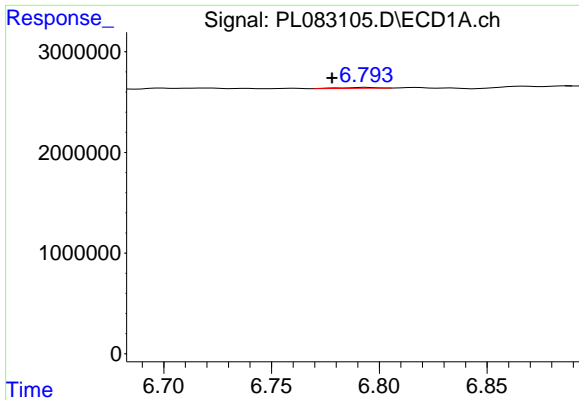
#15 Endosulfan II

R.T.: 6.543 min
 Delta R.T.: 0.000 min
 Response: 152906
 Conc: N.D.



#15 Endosulfan II

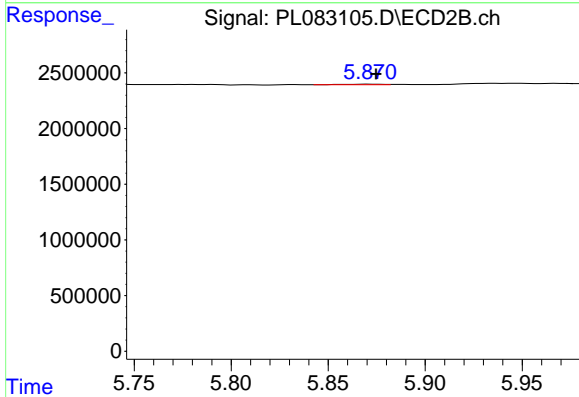
R.T.: 5.774 min
 Delta R.T.: 0.002 min
 Response: 224668
 Conc: 0.09 ng/ml



#17 4,4'-DDT

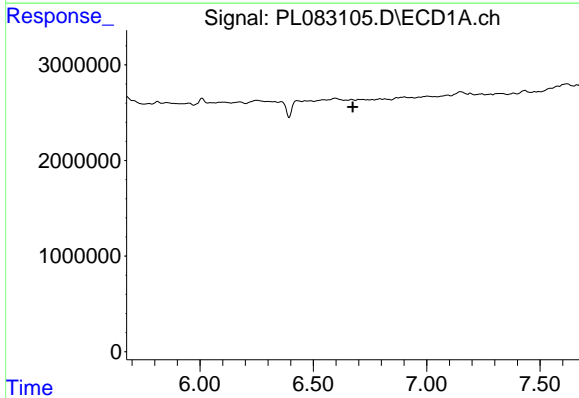
R.T.: 6.794 min
 Delta R.T.: 0.016 min
 Response: 101858
 Conc: 0.04 ng/ml

Instrument :
 ECD_L
 ClientSampleId :



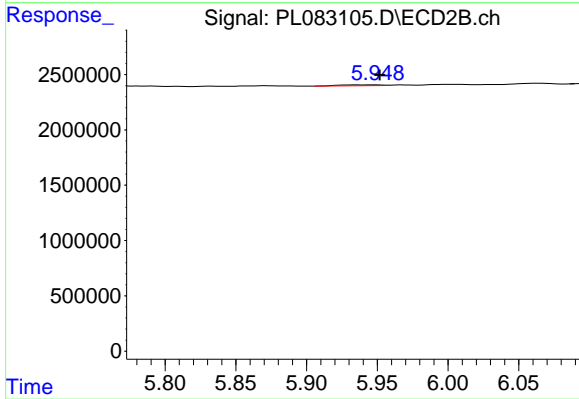
#17 4,4'-DDT

R.T.: 5.872 min
 Delta R.T.: -0.003 min
 Response: 57722
 Conc: 0.03 ng/ml



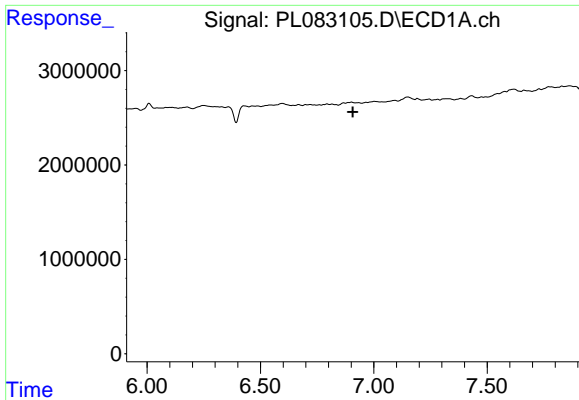
#18 Endrin aldehyde

R.T.: 0.000 min
 Exp R.T. : 6.674 min
 Response: 0
 Conc: N.D.



#18 Endrin aldehyde

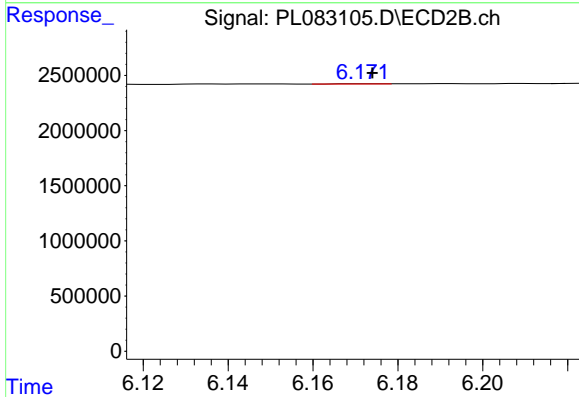
R.T.: 5.950 min
 Delta R.T.: -0.002 min
 Response: 163075
 Conc: 0.08 ng/ml



#19 Endosulfan Sulfate

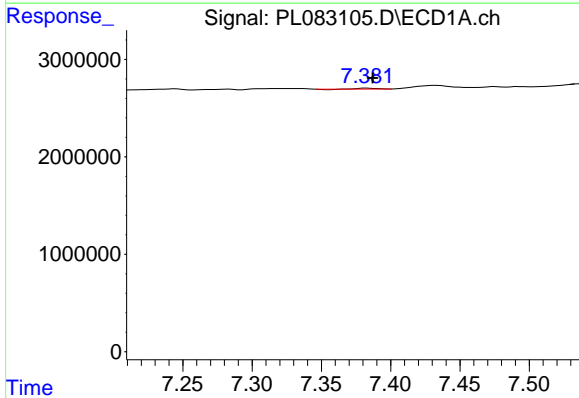
R.T.: 0.000 min
 Exp R.T.: 6.908 min
 Response: 0
 Conc: N.D.

Instrument :
 ECD_L
 ClientSampleId :



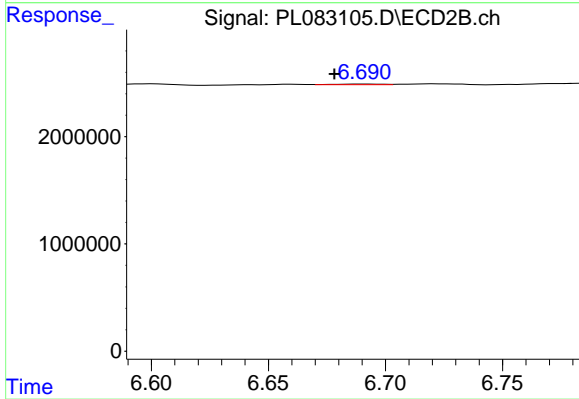
#19 Endosulfan Sulfate

R.T.: 6.172 min
 Delta R.T.: -0.002 min
 Response: 17780
 Conc: 0.01 ng/ml



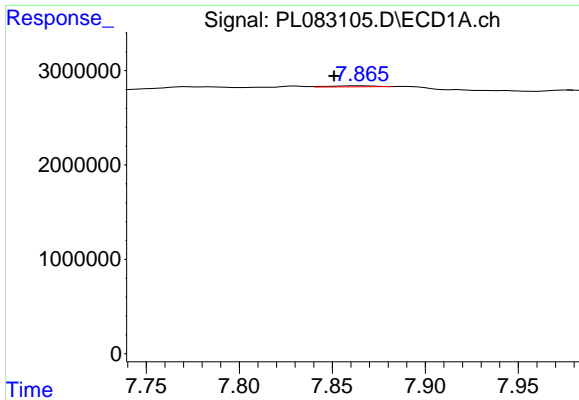
#21 Endrin ketone

R.T.: 7.383 min
 Delta R.T.: -0.004 min
 Response: 74214
 Conc: 0.03 ng/ml



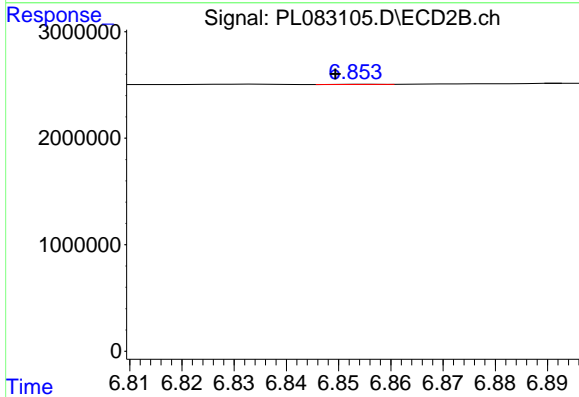
#21 Endrin ketone

R.T.: 6.691 min
 Delta R.T.: 0.013 min
 Response: 81210
 Conc: 0.03 ng/ml

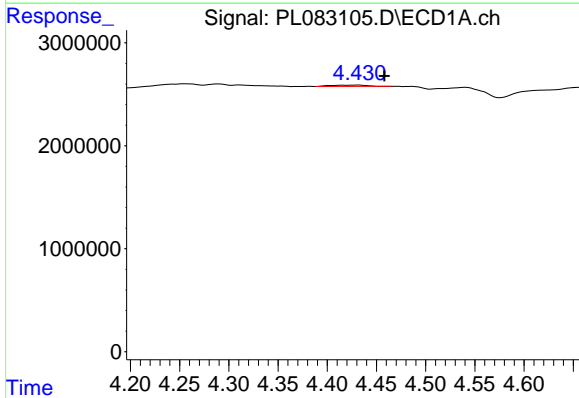


#22 Mirex
 R.T.: 7.866 min
 Delta R.T.: 0.015 min
 Response: 176549
 Conc: 0.08 ng/ml

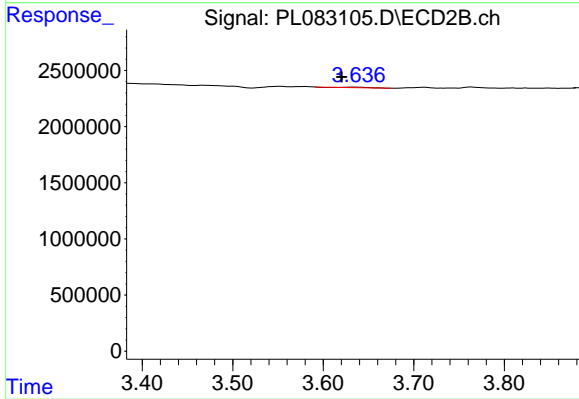
Instrument :
 ECD_L
 ClientSampleId :



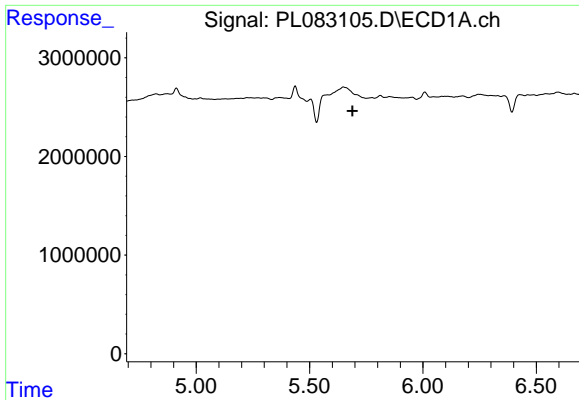
#22 Mirex
 R.T.: 6.855 min
 Delta R.T.: 0.006 min
 Response: 7711
 Conc: 0.00 ng/ml



#23 Chlordane-1
 R.T.: 4.431 min
 Delta R.T.: -0.027 min
 Response: 332477
 Conc: 3.04 ng/ml



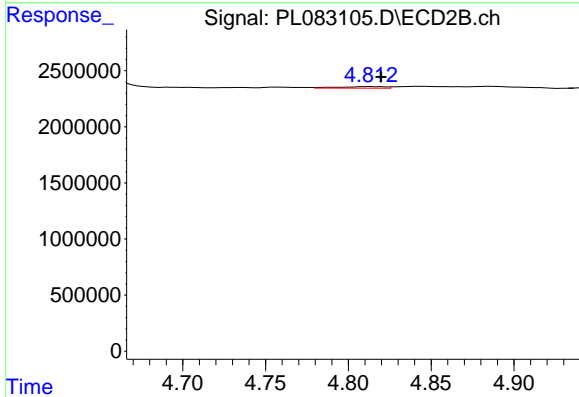
#23 Chlordane-1
 R.T.: 3.634 min
 Delta R.T.: 0.014 min
 Response: 52967
 Conc: 0.64 ng/ml



#25 Chlordane-3

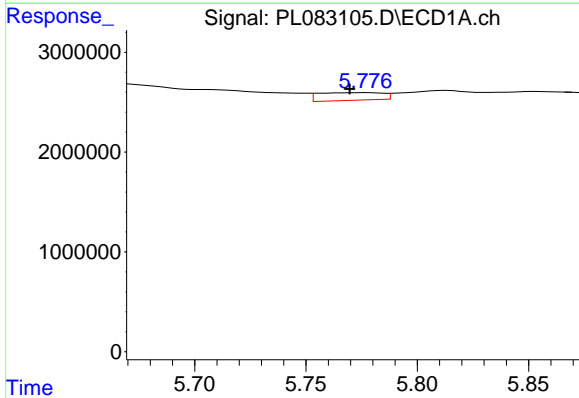
R.T.: 0.000 min
 Exp R.T.: 5.689 min
 Response: 0
 Conc: N.D.

Instrument :
 ECD_L
 ClientSampleId :



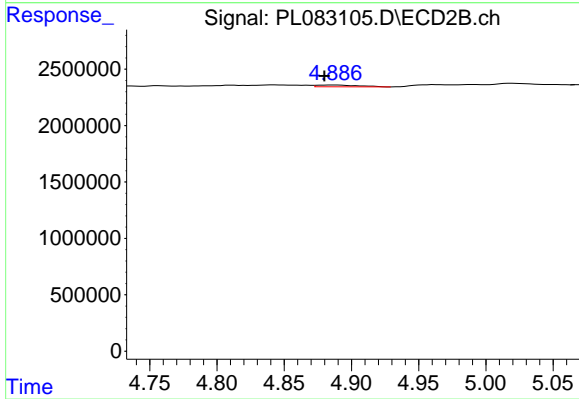
#25 Chlordane-3

R.T.: 4.812 min
 Delta R.T.: -0.007 min
 Response: 274246
 Conc: 1.03 ng/ml



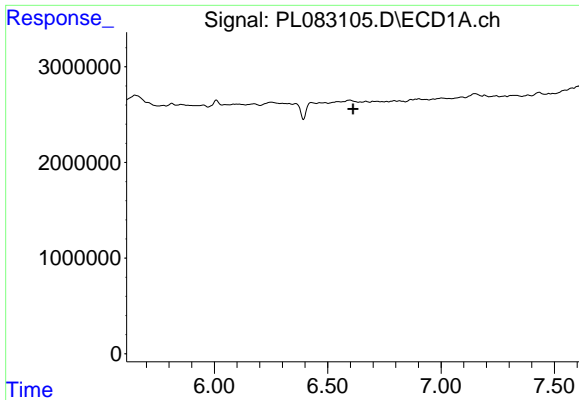
#26 Chlordane-4

R.T.: 5.776 min
 Delta R.T.: 0.007 min
 Response: 1533085
 Conc: 3.03 ng/ml



#26 Chlordane-4

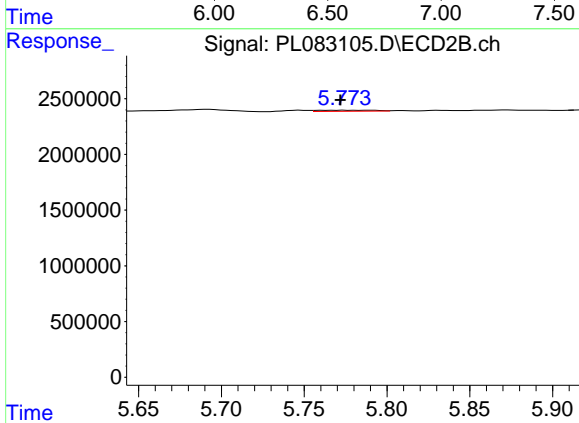
R.T.: 4.887 min
 Delta R.T.: 0.007 min
 Response: 347140
 Conc: 1.23 ng/ml



#27 Chlordane-5

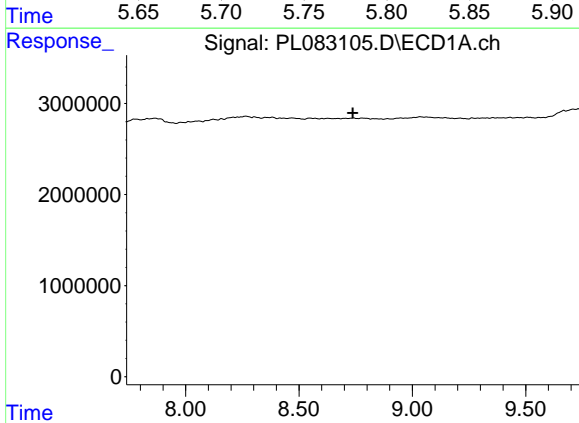
R.T.: 0.000 min
 Exp R.T.: 6.612 min
 Response: 0
 Conc: N.D.

Instrument :
 ECD_L
 ClientSampleId :



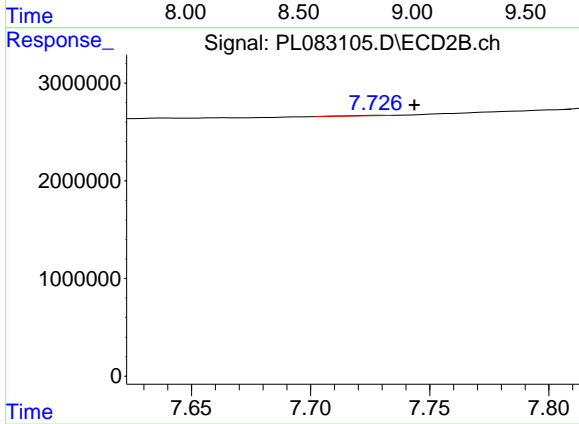
#27 Chlordane-5

R.T.: 5.774 min
 Delta R.T.: 0.002 min
 Response: 224668
 Conc: 2.31 ng/ml



#28 Decachlorobiphenyl

R.T.: 0.000 min
 Exp R.T.: 8.738 min
 Response: 0
 Conc: N.D.



#28 Decachlorobiphenyl

R.T.: 7.728 min
 Delta R.T.: -0.015 min
 Response: 33288
 Conc: 0.01 ng/ml