

Data Path : Z:\pestpcbsrv\HPCHEM1\ECD\_L\Data\PL060121\  
 Data File : PL066962.D  
 Signal(s) : Signal #1: ECD1A.ch Signal #2: ECD2B.ch  
 Acq On : 01 Jun 2021 14:35  
 Operator : AR\AJ  
 Sample : PEM  
 Misc :  
 ALS Vial : 3 Sample Multiplier: 1

Instrument :  
 ECD\_L  
 ClientSampleId :  
 PEM

Integration File signal 1: autoint1.e  
 Integration File signal 2: autoint2.e  
 Quant Time: Jun 02 02:50:18 2021  
 Quant Method : Z:\pestpcbsrv\HPCHEM1\ECD\_L\methods\PL060121.M  
 Quant Title : GC Extractables  
 QLast Update : Wed Jun 02 02:45:26 2021  
 Response via : Initial Calibration  
 Integrator: ChemStation

Volume Inj. : 1 µl  
 Signal #1 Phase : ZB-MR2 Signal #2 Phase: ZB-MR1  
 Signal #1 Info : 30M x 0.32mm x0.2 Signal #2 Info : 30M x 0.32mm x0.5µm

	Compound	RT#1	RT#2	Resp#1	Resp#2	ng/ml	ng/ml
-----							
System Monitoring Compounds							
1)	SA Tetrachlo...	4.481	5.533	8584165	12945378	20.962	20.011
28)	SA Decachlor...	10.226	11.435	13267005	17395441	20.517	20.849
Target Compounds							
2)	A alpha-BHC	5.181	6.113	5044334	6934208	9.538	8.784
3)	MA gamma-BHC...	5.601	6.508	5305882	6981098	9.526	9.215
4)	MA Heptachlor	5.984f	0.000	3184830	0	6.063	N.D. #
5)	MB Aldrin	0.000	7.519	0	245358	N.D.	0.336 #
6)	B beta-BHC	5.984	6.763	3184830	3653664	11.957	9.793
12)	B 4,4'-DDE	7.474	0.000	182962	0	0.343	N.D. #
14)	MA Endrin	7.879	8.927	26367110	28577807	50.913	50.599
16)	A 4,4'-DDD	8.057	9.073	463209	434066	1.022	0.803
17)	MA 4,4'-DDT	8.315	9.389	49039480	54223663	106.379	103.984
18)	B Endrin al...	8.378	0.000	397898	0	0.864	N.D. #
20)	A Methoxychlor	8.909	9.875	66809153	72437086	224.107	228.059
21)	B Endrin ke...	9.119	10.031	517619	458762	0.809	0.633
22)	Mirex	9.330f	0.000	441007	0	0.746	N.D. #
24)	Chlordane-2	0.000	7.519f	0	245358	N.D.	8.332 #
-----							

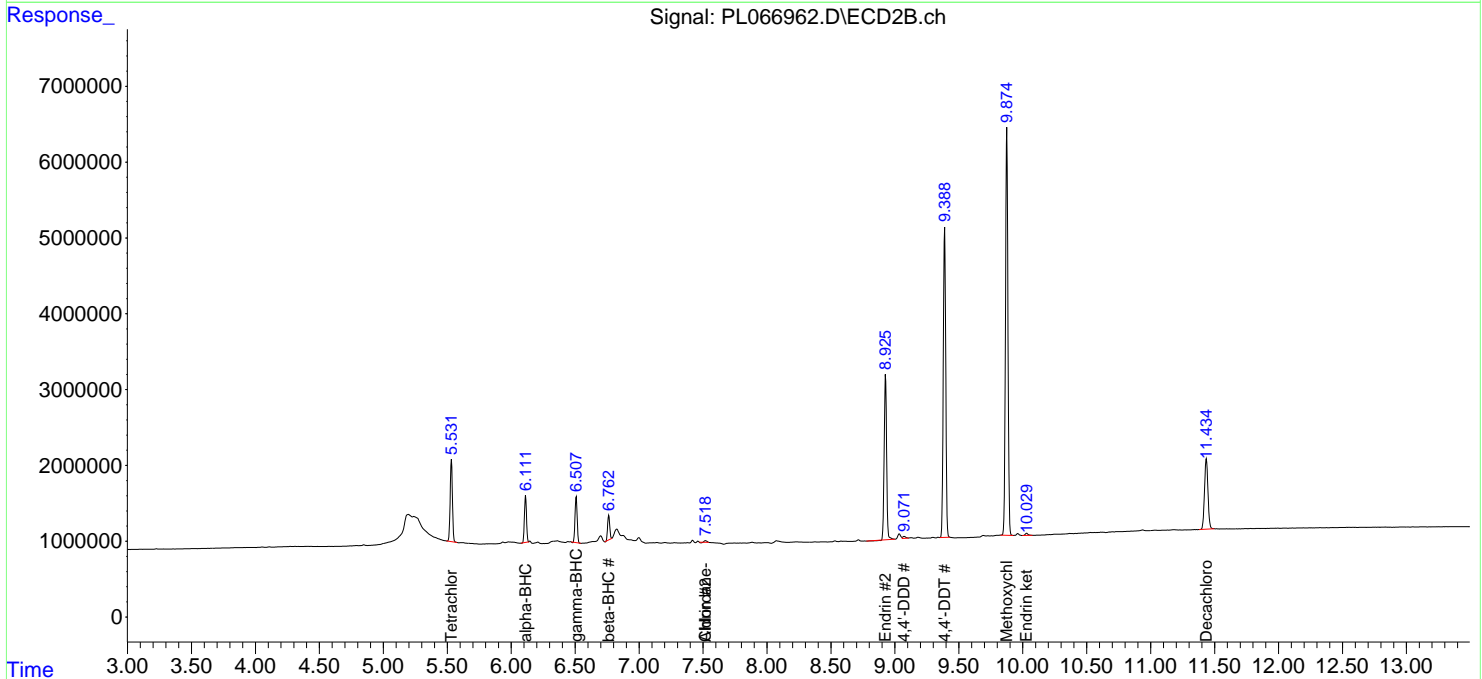
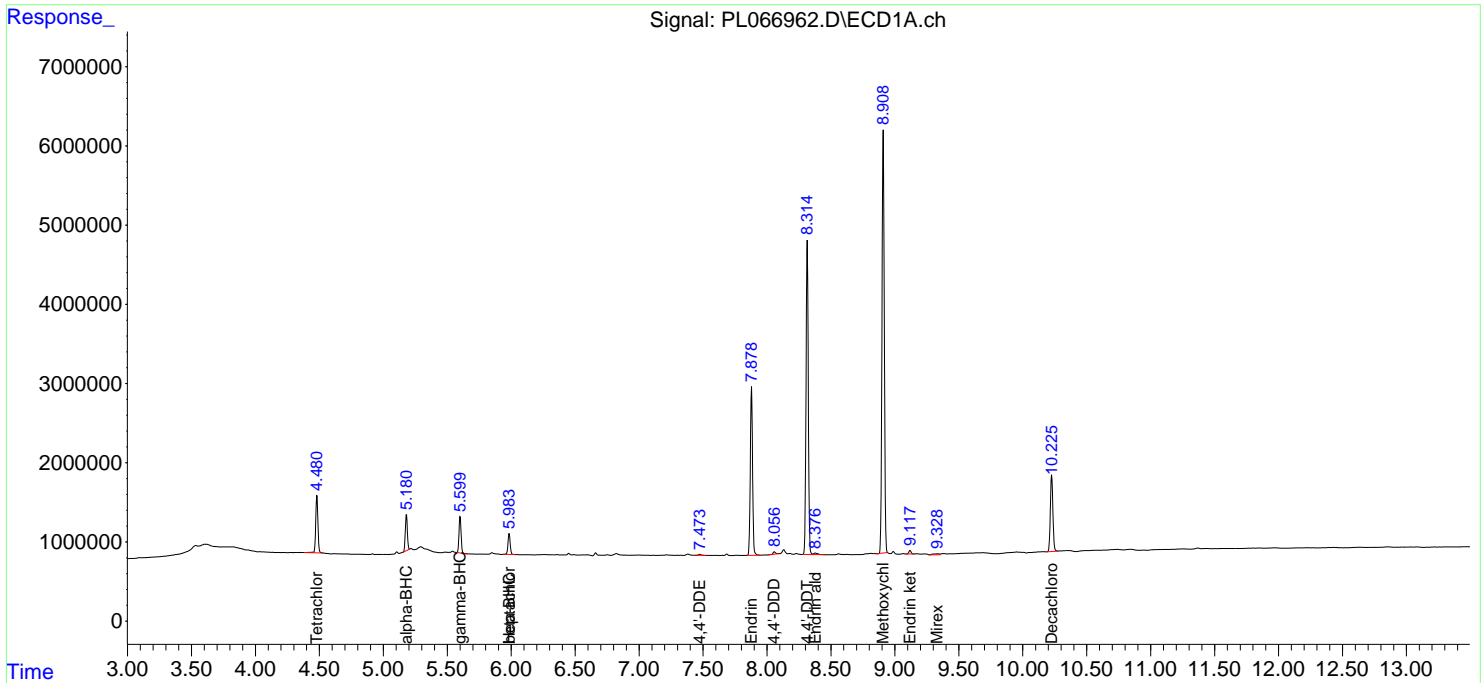
(f)=RT Delta > 1/2 Window (#)=Amounts differ by > 25% (m)=manual int.

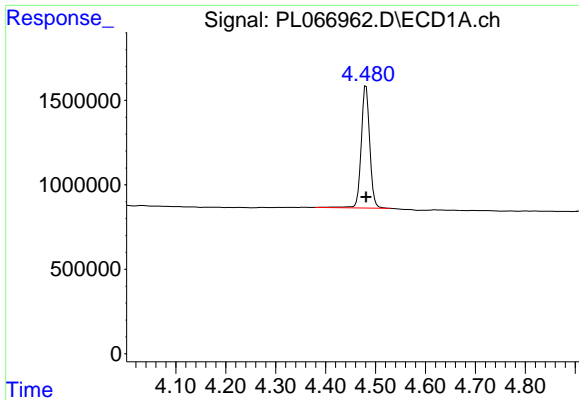
Data Path : Z:\pestpcbsrv\HPCHEM1\ECD\_L\Data\PL060121\  
 Data File : PL066962.D  
 Signal(s) : Signal #1: ECD1A.ch Signal #2: ECD2B.ch  
 Acq On : 01 Jun 2021 14:35  
 Operator : AR\AJ  
 Sample : PEM  
 Misc :  
 ALS Vial : 3 Sample Multiplier: 1

Instrument :  
 ECD\_L  
 Client Sampled :  
 PEM

Integration File signal 1: autoint1.e  
 Integration File signal 2: autoint2.e  
 Quant Time: Jun 02 02:50:18 2021  
 Quant Method : Z:\pestpcbsrv\HPCHEM1\ECD\_L\methods\PL060121.M  
 Quant Title : GC Extractables  
 QLast Update : Wed Jun 02 02:45:26 2021  
 Response via : Initial Calibration  
 Integrator: ChemStation

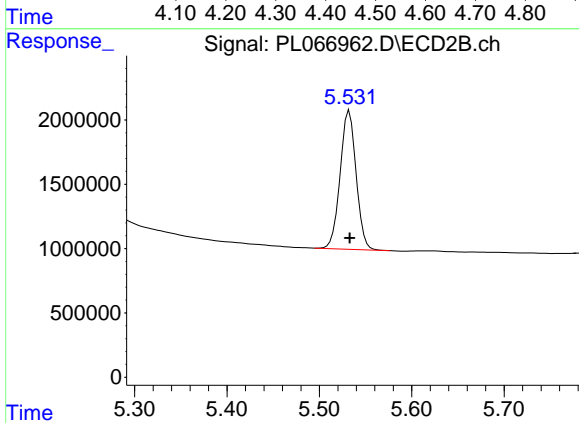
Volume Inj. : 1 µl  
 Signal #1 Phase : ZB-MR2 Signal #2 Phase: ZB-MR1  
 Signal #1 Info : 30M x 0.32mm x0.2 Signal #2 Info : 30M x 0.32mm x0.5µm



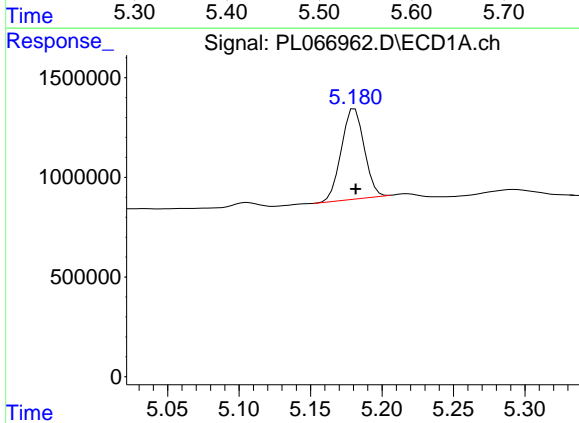


#1 Tetrachloro-m-xylene  
 R.T.: 4.481 min  
 Delta R.T.: 0.000 min  
 Response: 8584165  
 Conc: 20.96 ng/ml

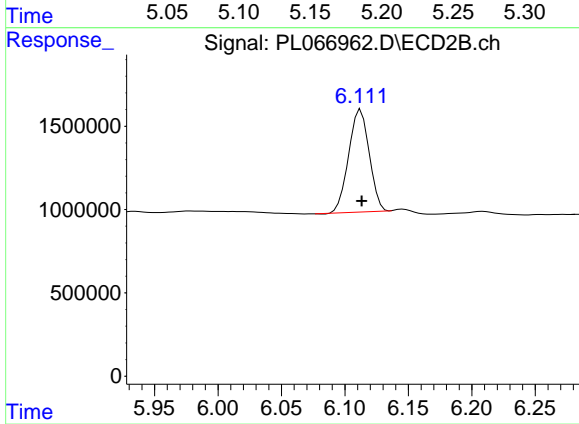
Instrument :  
 ECD\_L  
 ClientSampleId :  
 PEM



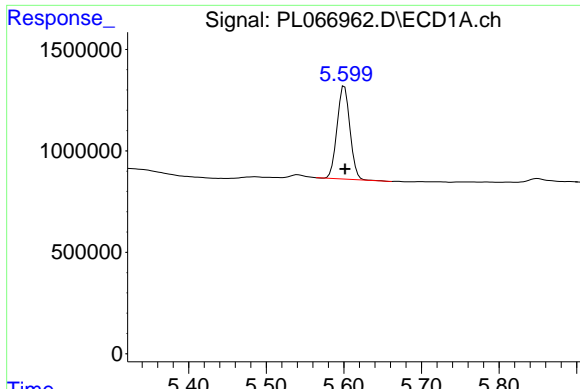
#1 Tetrachloro-m-xylene  
 R.T.: 5.533 min  
 Delta R.T.: 0.000 min  
 Response: 12945378  
 Conc: 20.01 ng/ml



#2 alpha-BHC  
 R.T.: 5.181 min  
 Delta R.T.: 0.000 min  
 Response: 5044334  
 Conc: 9.54 ng/ml

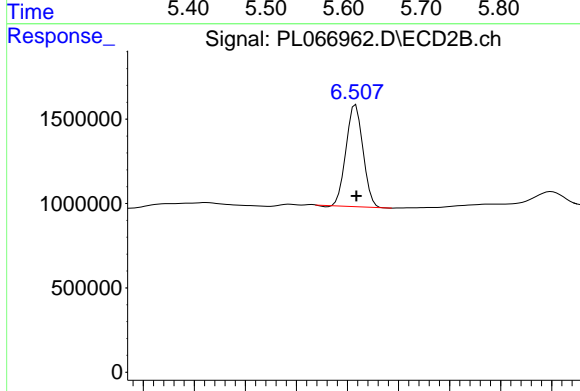


#2 alpha-BHC  
 R.T.: 6.113 min  
 Delta R.T.: 0.000 min  
 Response: 6934208  
 Conc: 8.78 ng/ml

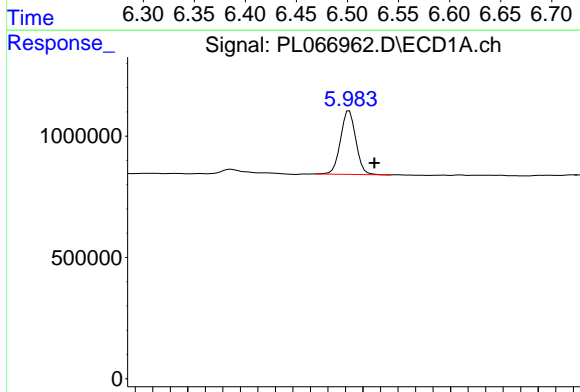


#3 gamma-BHC (Lindane)  
 R.T.: 5.601 min  
 Delta R.T.: 0.000 min  
 Response: 5305882  
 Conc: 9.53 ng/ml

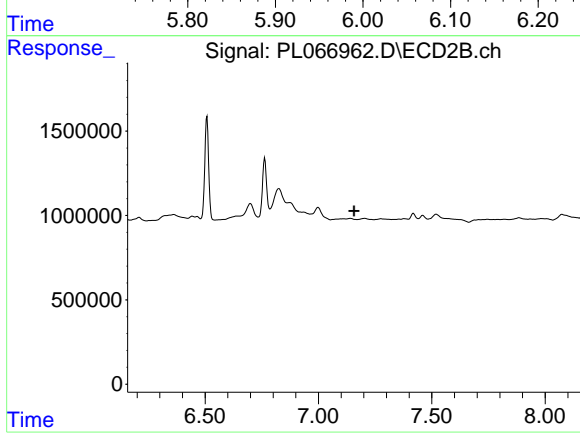
Instrument :  
 ECD\_L  
 ClientSampleId :  
 PEM



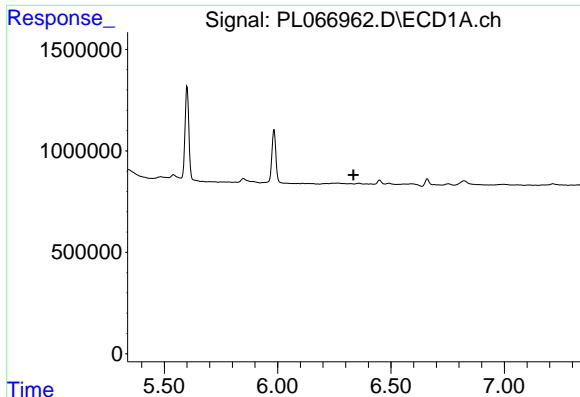
#3 gamma-BHC (Lindane)  
 R.T.: 6.508 min  
 Delta R.T.: 0.000 min  
 Response: 6981098  
 Conc: 9.21 ng/ml



#4 Heptachlor  
 R.T.: 5.984 min  
 Delta R.T.: -0.029 min  
 Response: 3184830  
 Conc: 6.06 ng/ml

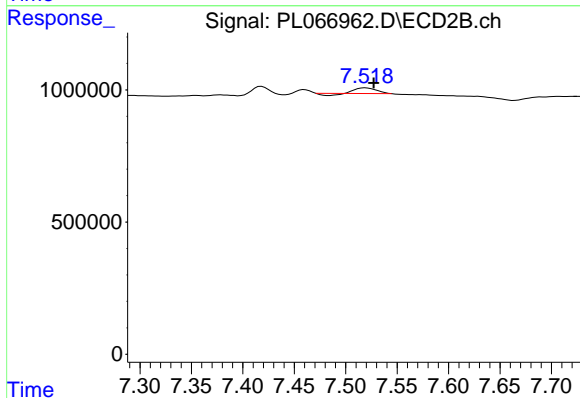


#4 Heptachlor  
 R.T.: 0.000 min  
 Exp R.T. : 7.157 min  
 Response: 0  
 Conc: N.D.

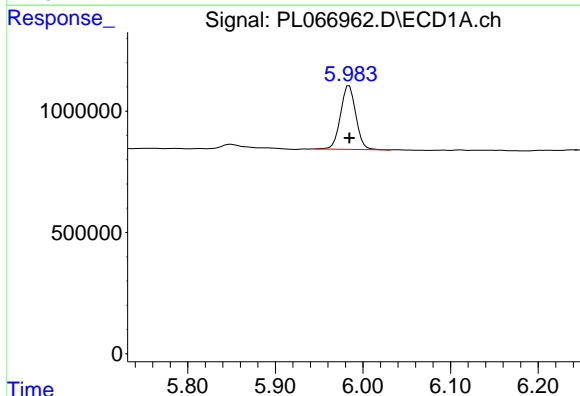


#5 Aldrin  
 R.T.: 0.000 min  
 Exp R.T.: 6.335 min  
 Response: 0  
 Conc: N.D.

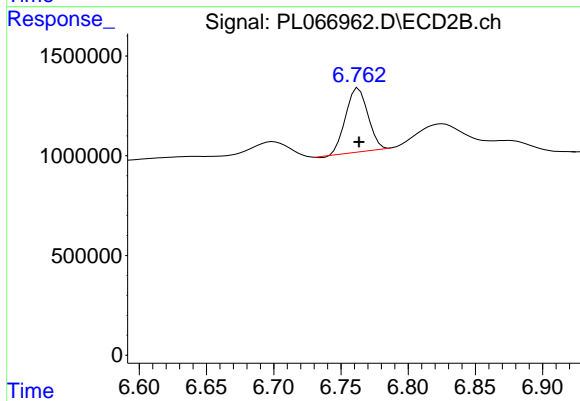
Instrument :  
 ECD\_L  
 ClientSampleId :  
 PEM



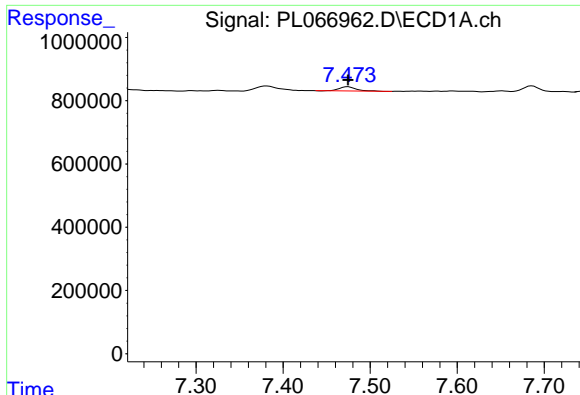
#5 Aldrin  
 R.T.: 7.519 min  
 Delta R.T.: -0.008 min  
 Response: 245358  
 Conc: 0.34 ng/ml



#6 beta-BHC  
 R.T.: 5.984 min  
 Delta R.T.: 0.000 min  
 Response: 3184830  
 Conc: 11.96 ng/ml



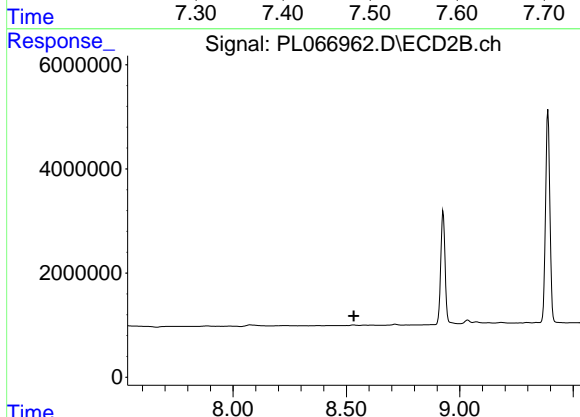
#6 beta-BHC  
 R.T.: 6.763 min  
 Delta R.T.: 0.000 min  
 Response: 3653664  
 Conc: 9.79 ng/ml



#12 4,4'-DDE

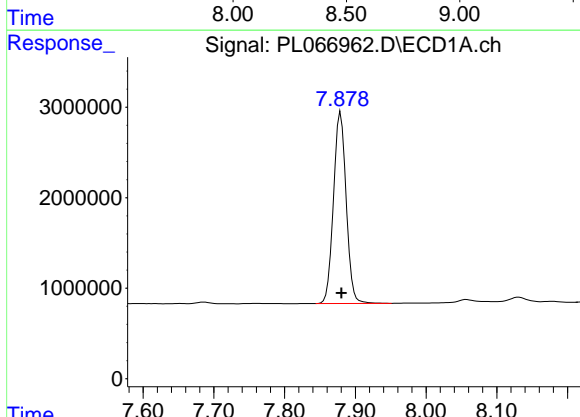
R.T.: 7.474 min  
 Delta R.T.: 0.000 min  
 Response: 182962  
 Conc: 0.34 ng/ml

Instrument :  
 ECD\_L  
 ClientSampleId :  
 PEM



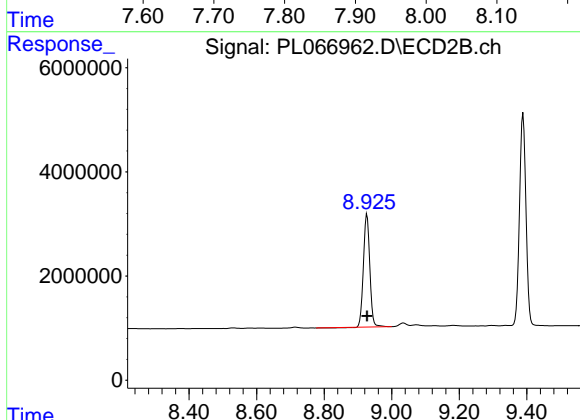
#12 4,4'-DDE

R.T.: 0.000 min  
 Exp R.T. : 8.533 min  
 Response: 0  
 Conc: N.D.



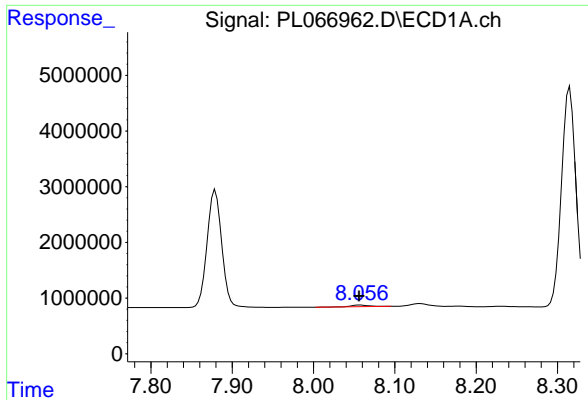
#14 Endrin

R.T.: 7.879 min  
 Delta R.T.: -0.001 min  
 Response: 26367110  
 Conc: 50.91 ng/ml



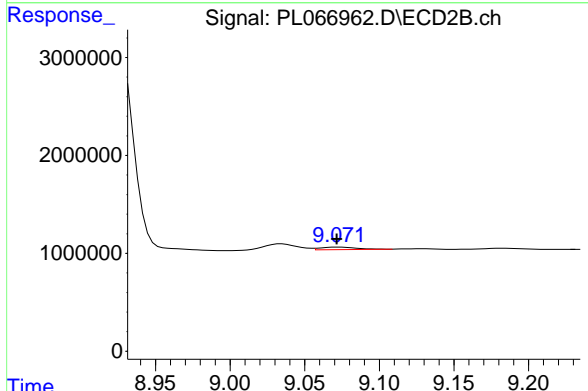
#14 Endrin

R.T.: 8.927 min  
 Delta R.T.: 0.000 min  
 Response: 28577807  
 Conc: 50.60 ng/ml

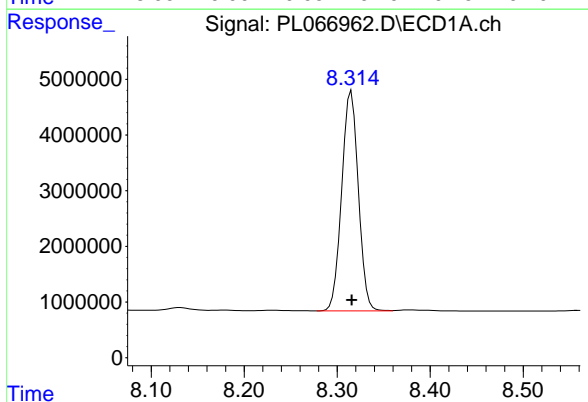


#16 4,4'-DDD  
 R.T.: 8.057 min  
 Delta R.T.: 0.001 min  
 Response: 463209  
 Conc: 1.02 ng/ml

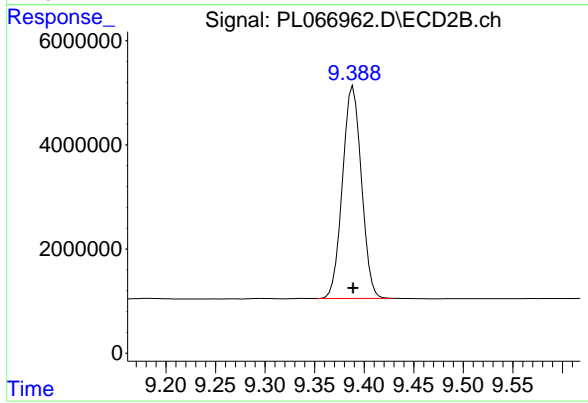
Instrument :  
 ECD\_L  
 ClientSampled :  
 PEM



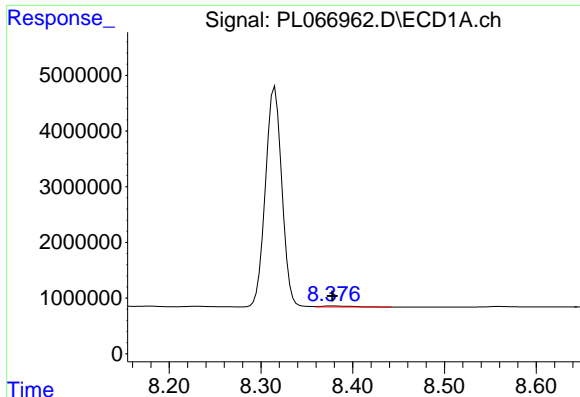
#16 4,4'-DDD  
 R.T.: 9.073 min  
 Delta R.T.: 0.002 min  
 Response: 434066  
 Conc: 0.80 ng/ml



#17 4,4'-DDT  
 R.T.: 8.315 min  
 Delta R.T.: 0.000 min  
 Response: 49039480  
 Conc: 106.38 ng/ml



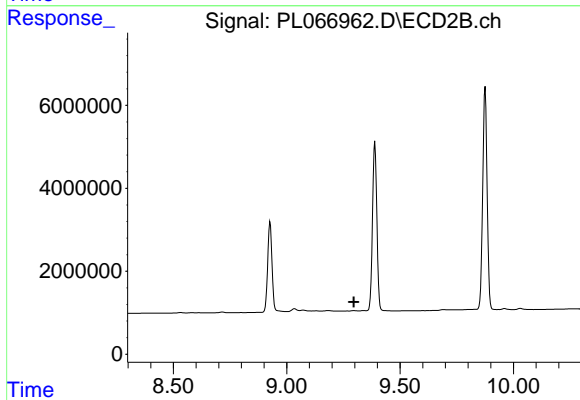
#17 4,4'-DDT  
 R.T.: 9.389 min  
 Delta R.T.: 0.000 min  
 Response: 54223663  
 Conc: 103.98 ng/ml



#18 Endrin aldehyde

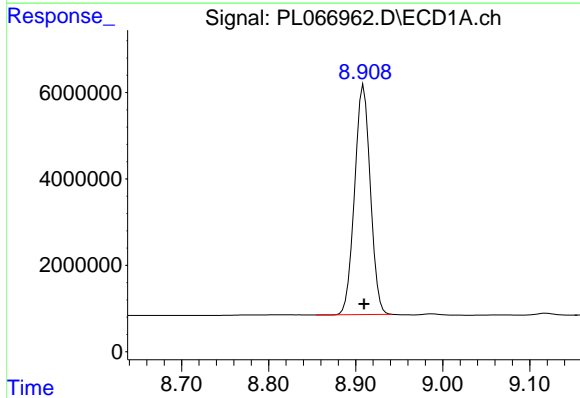
R.T.: 8.378 min  
 Delta R.T.: 0.000 min  
 Response: 397898  
 Conc: 0.86 ng/ml

Instrument :  
 ECD\_L  
 ClientSampleId :  
 PEM



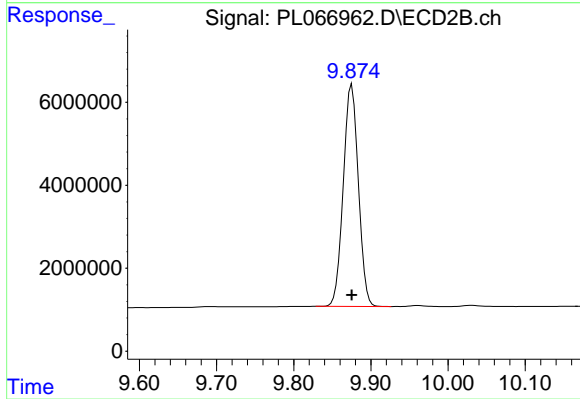
#18 Endrin aldehyde

R.T.: 0.000 min  
 Exp R.T. : 9.295 min  
 Response: 0  
 Conc: N.D.



#20 Methoxychlor

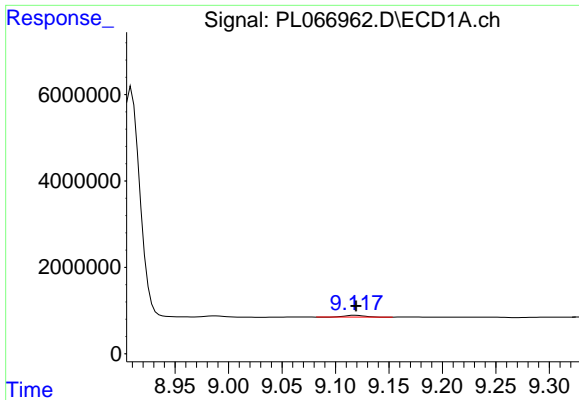
R.T.: 8.909 min  
 Delta R.T.: 0.000 min  
 Response: 66809153  
 Conc: 224.11 ng/ml



#20 Methoxychlor

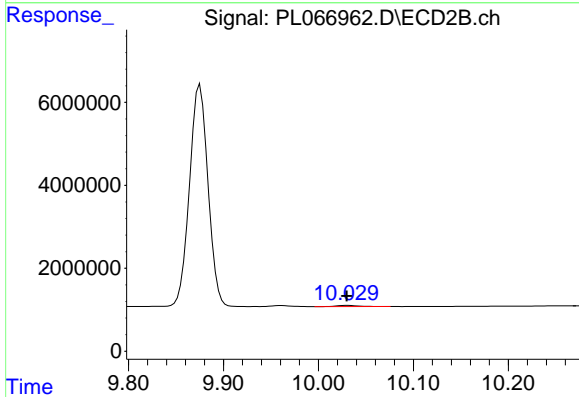
R.T.: 9.875 min  
 Delta R.T.: 0.000 min  
 Response: 72437086  
 Conc: 228.06 ng/ml



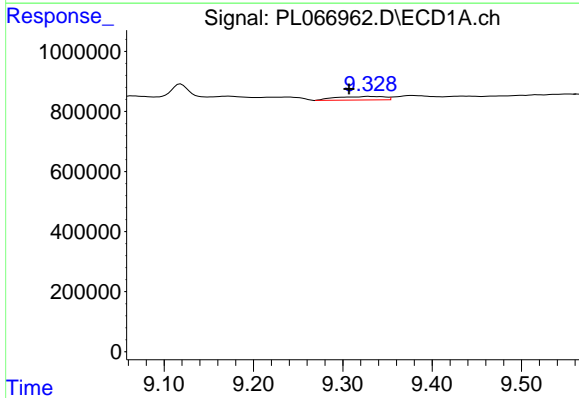


#21 Endrin ketone  
 R.T.: 9.119 min  
 Delta R.T.: 0.000 min  
 Response: 517619  
 Conc: 0.81 ng/ml

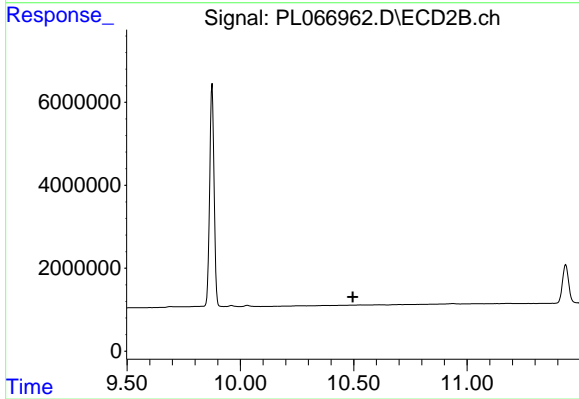
Instrument :  
 ECD\_L  
 ClientSampleId :  
 PEM



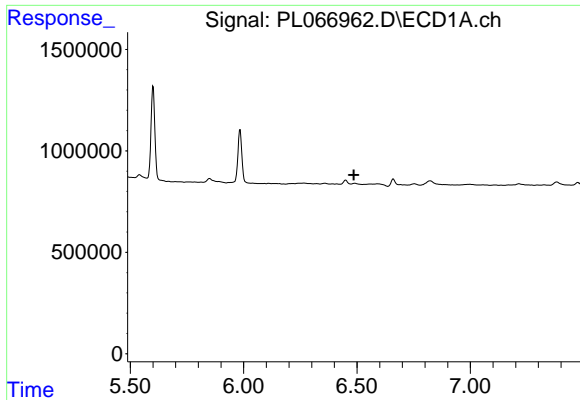
#21 Endrin ketone  
 R.T.: 10.031 min  
 Delta R.T.: 0.001 min  
 Response: 458762  
 Conc: 0.63 ng/ml



#22 Mirex  
 R.T.: 9.330 min  
 Delta R.T.: 0.022 min  
 Response: 441007  
 Conc: 0.75 ng/ml

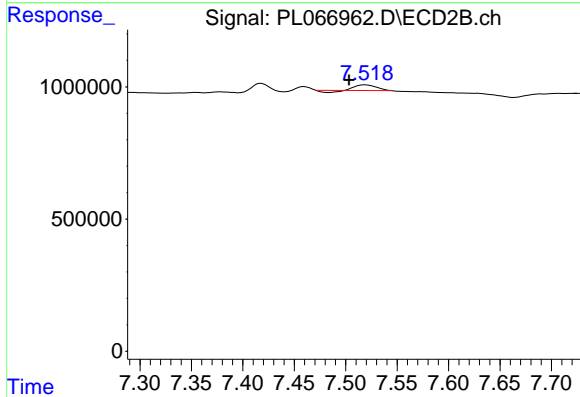


#22 Mirex  
 R.T.: 0.000 min  
 Exp R.T. : 10.496 min  
 Response: 0  
 Conc: N.D.

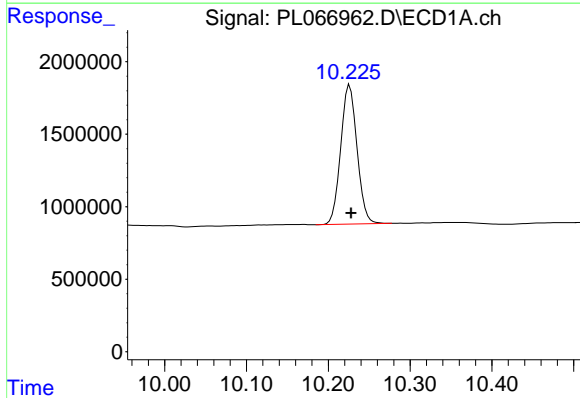


#24 Chlordane-2  
 R.T.: 0.000 min  
 Exp R.T.: 6.486 min  
 Response: 0  
 Conc: N.D.

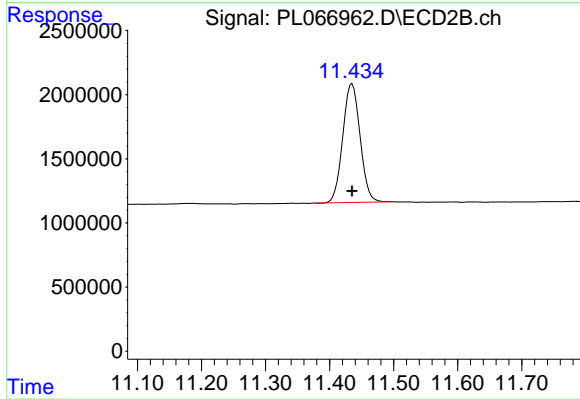
Instrument :  
 ECD\_L  
 ClientSampleId :  
 PEM



#24 Chlordane-2  
 R.T.: 7.519 min  
 Delta R.T.: 0.016 min  
 Response: 245358  
 Conc: 8.33 ng/ml



#28 Decachlorobiphenyl  
 R.T.: 10.226 min  
 Delta R.T.: -0.002 min  
 Response: 13267005  
 Conc: 20.52 ng/ml



#28 Decachlorobiphenyl  
 R.T.: 11.435 min  
 Delta R.T.: 0.000 min  
 Response: 17395441  
 Conc: 20.85 ng/ml