

Data Path : Z:\pestpcbsrv\HPCHEM1\ECD_L\Data\PL060122\
 Data File : PL075349.D
 Signal(s) : Signal #1: ECD1A.ch Signal #2: ECD2B.ch
 Acq On : 01 Jun 2022 12:15
 Operator : AR\AJ
 Sample : N3042-05
 Misc :
 ALS Vial : 10 Sample Multiplier: 1

Instrument :
 ECD_L
 ClientSampleId :

Integration File signal 1: autoint1.e
 Integration File signal 2: autoint2.e
 Quant Time: Jun 02 06:00:48 2022
 Quant Method : Z:\pestpcbsrv\HPCHEM1\ECD_L\methods\PL052822.M
 Quant Title : GC Extractables
 QLast Update : Wed Jun 01 10:19:11 2022
 Response via : Initial Calibration
 Integrator: ChemStation

Volume Inj. : 1 µl
 Signal #1 Phase : ZB-MR2 Signal #2 Phase: ZB-MR1
 Signal #1 Info : 30M x 0.32mm x0.2 Signal #2 Info : 30M x 0.32mm x0.5µm

	Compound	RT#1	RT#2	Resp#1	Resp#2	ng/ml	ng/ml

System Monitoring Compounds							
1)	SA Tetrachlo...	5.640	4.639	3335915	8351377	5.676	5.272
28)	SA Decachlor...	11.637	10.387	2019043	5125736	3.766	3.735
Target Compounds							
8)	B Heptachlo...	8.131	0.000	45393	0	0.066	N.D. #
14)	MA Endrin	0.000	8.069f	0	253787	N.D.	0.163 #
15)	B Endosulfa...	9.302	0.000	87333	0	0.155	N.D. #
16)	A 4,4'-DDD	9.202	0.000	177363	0	0.359	N.D. #
17)	MA 4,4'-DDT	9.539f	8.466	68786	358923	0.118	0.251 #
19)	B Endosulfa...	9.676	8.775	102804	200441	0.185	0.134 #
21)	B Endrin ke...	10.186f	9.295	184235	1409	0.300	0.001 #
27)	Chlordane-5	0.000	8.129	0	282772	N.D.	5.667 #

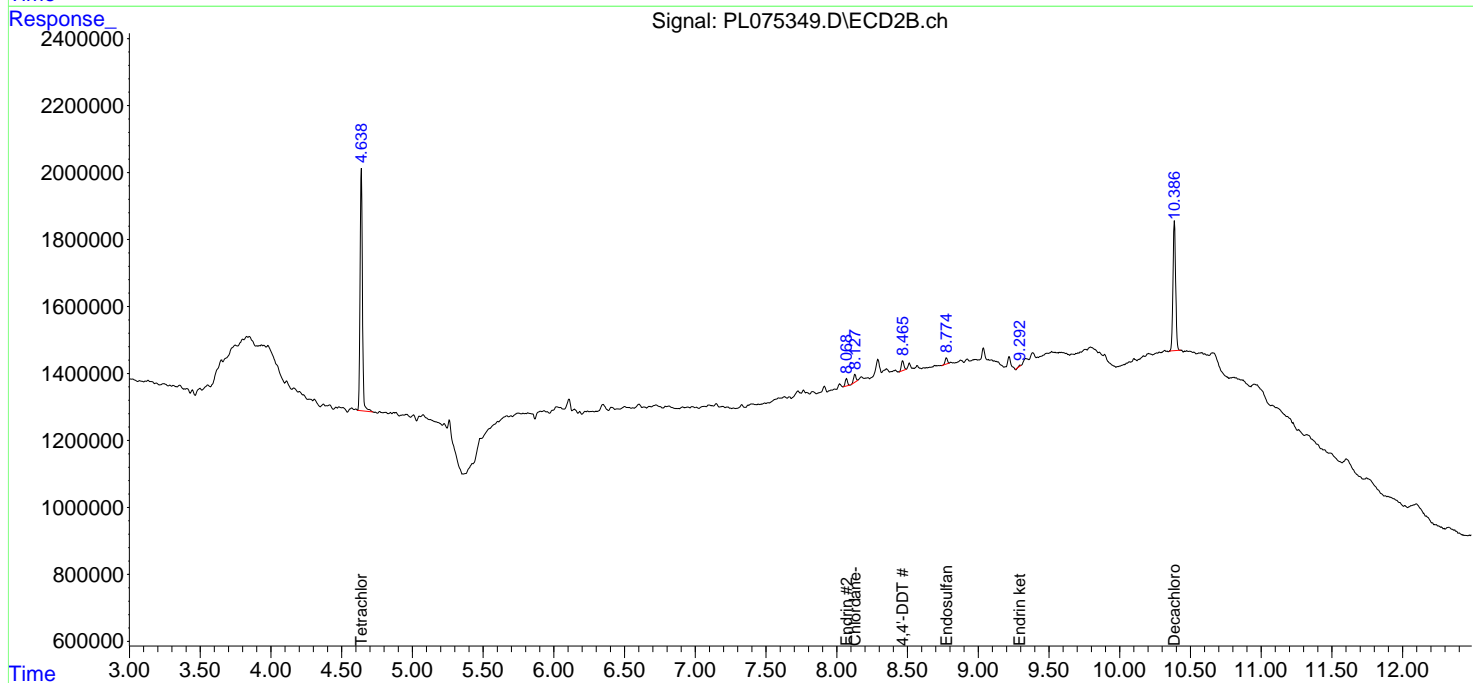
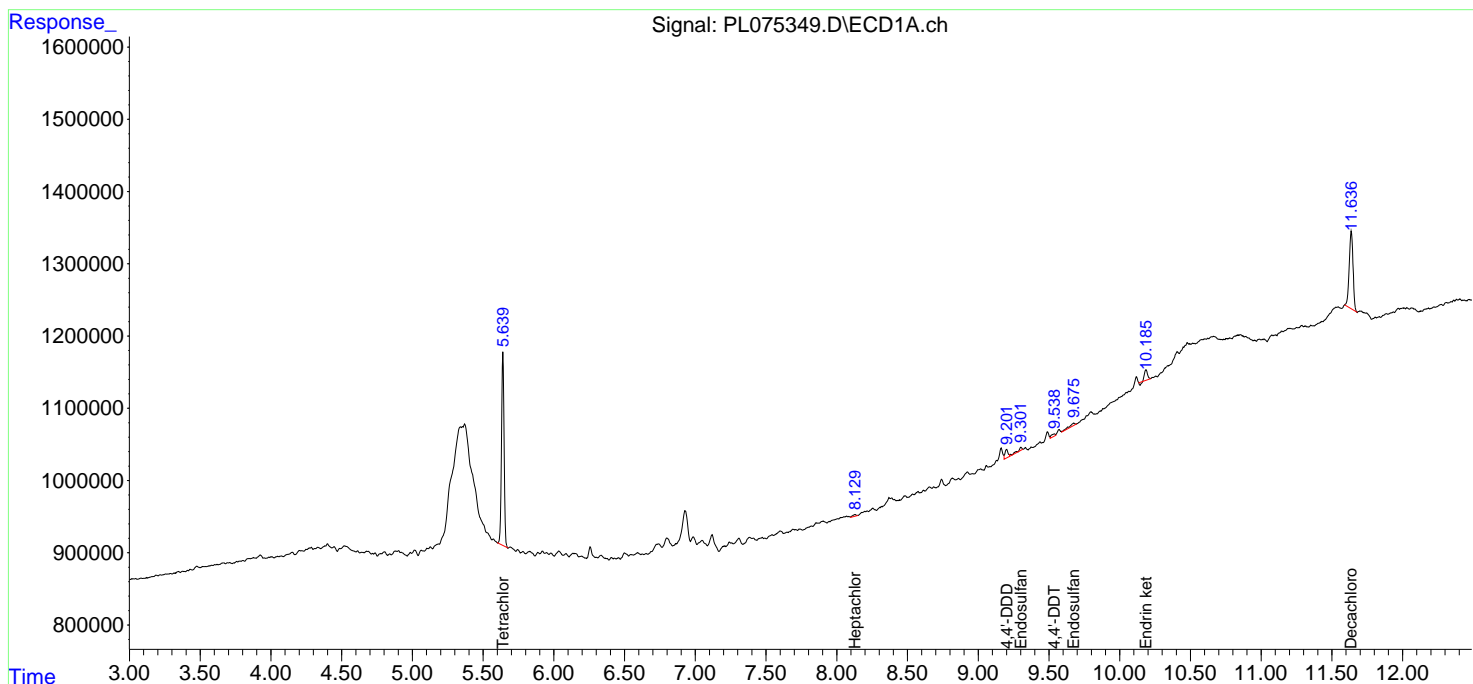
(f)=RT Delta > 1/2 Window (#)=Amounts differ by > 25% (m)=manual int.

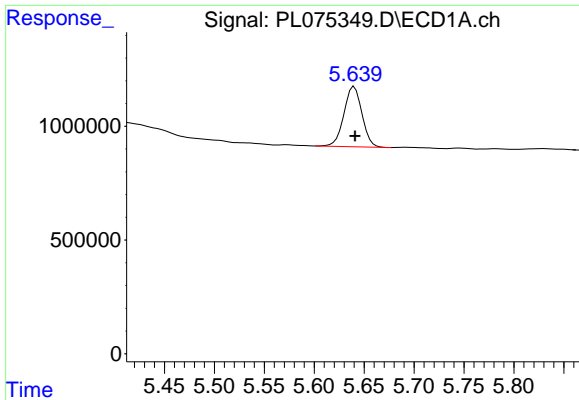
Data Path : Z:\pestpcbsrv\HPCHEM1\ECD_L\Data\PL060122\
 Data File : PL075349.D
 Signal(s) : Signal #1: ECD1A.ch Signal #2: ECD2B.ch
 Acq On : 01 Jun 2022 12:15
 Operator : AR\AJ
 Sample : N3042-05
 Misc :
 ALS Vial : 10 Sample Multiplier: 1

Instrument :
 ECD_L
 ClientSampleId :

Integration File signal 1: autoint1.e
 Integration File signal 2: autoint2.e
 Quant Time: Jun 02 06:00:48 2022
 Quant Method : Z:\pestpcbsrv\HPCHEM1\ECD_L\methods\PL052822.M
 Quant Title : GC Extractables
 QLast Update : Wed Jun 01 10:19:11 2022
 Response via : Initial Calibration
 Integrator: ChemStation

Volume Inj. : 1 µl
 Signal #1 Phase : ZB-MR2 Signal #2 Phase: ZB-MR1
 Signal #1 Info : 30M x 0.32mm x0.2 Signal #2 Info : 30M x 0.32mm x0.5µm

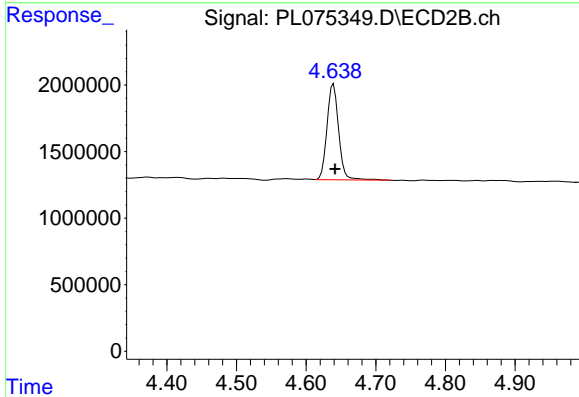




#1 Tetrachloro-m-xylene

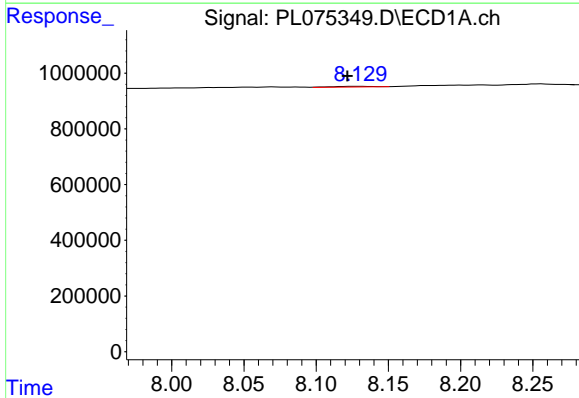
R.T.: 5.640 min
 Delta R.T.: 0.000 min
 Response: 3335915
 Conc: 5.68 ng/ml

Instrument :
 ECD_L
 ClientSampleId :



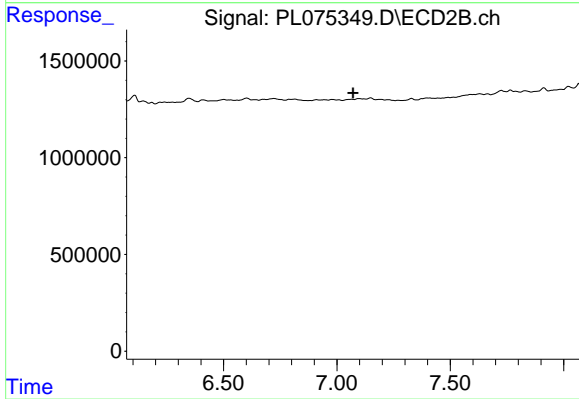
#1 Tetrachloro-m-xylene

R.T.: 4.639 min
 Delta R.T.: -0.002 min
 Response: 8351377
 Conc: 5.27 ng/ml



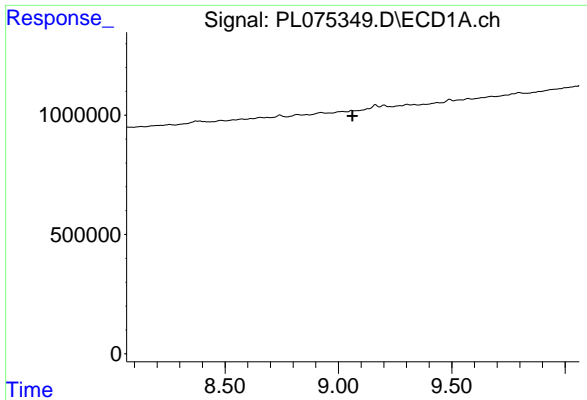
#8 Heptachlor epoxide

R.T.: 8.131 min
 Delta R.T.: 0.009 min
 Response: 45393
 Conc: 0.07 ng/ml



#8 Heptachlor epoxide

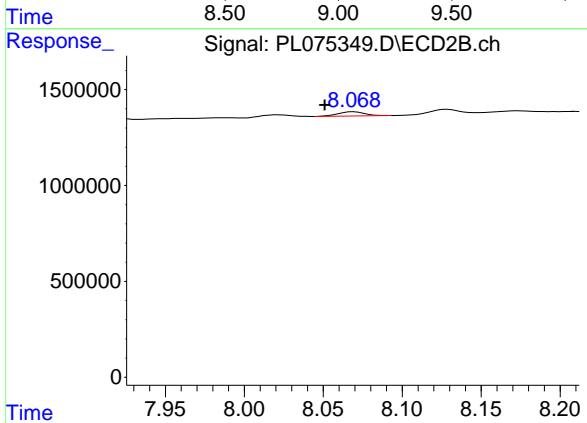
R.T.: 0.000 min
 Exp R.T.: 7.072 min
 Response: 0
 Conc: N.D.



#14 Endrin

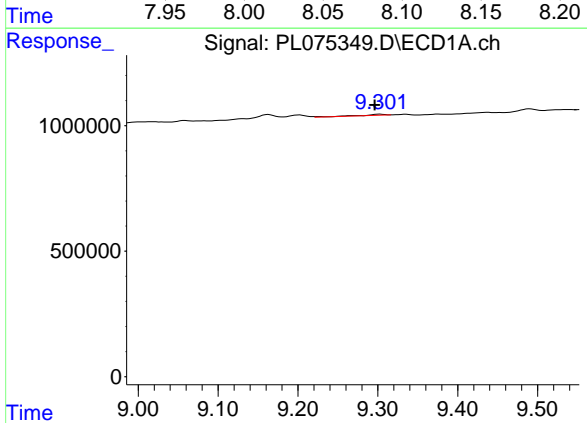
R.T.: 0.000 min
 Exp R.T.: 9.062 min
 Response: 0
 Conc: N.D.

Instrument :
 ECD_L
 ClientSampleId :



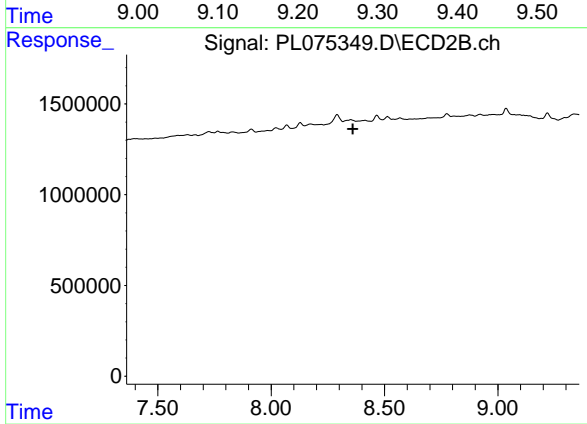
#14 Endrin

R.T.: 8.069 min
 Delta R.T.: 0.018 min
 Response: 253787
 Conc: 0.16 ng/ml



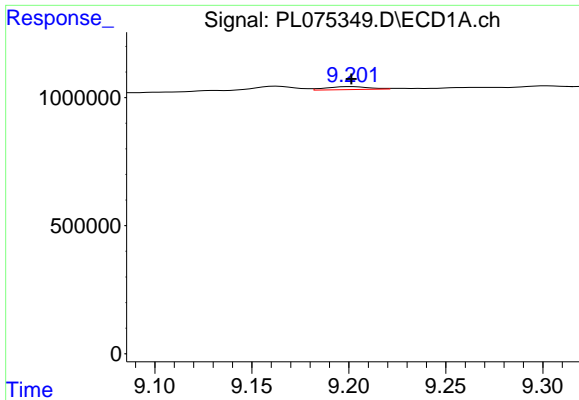
#15 Endosulfan II

R.T.: 9.302 min
 Delta R.T.: 0.006 min
 Response: 87333
 Conc: 0.15 ng/ml



#15 Endosulfan II

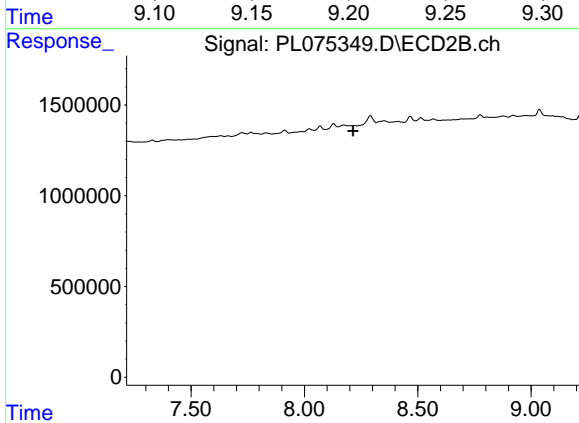
R.T.: 0.000 min
 Exp R.T.: 8.361 min
 Response: 0
 Conc: N.D.



#16 4,4'-DDD

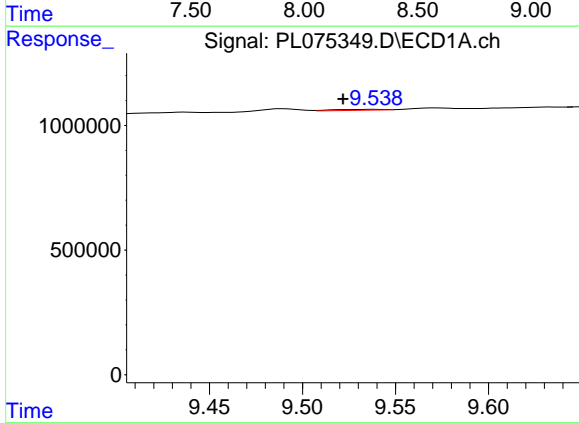
R.T.: 9.202 min
 Delta R.T.: 0.000 min
 Response: 177363
 Conc: 0.36 ng/ml

Instrument :
 ECD_L
 ClientSampleId :



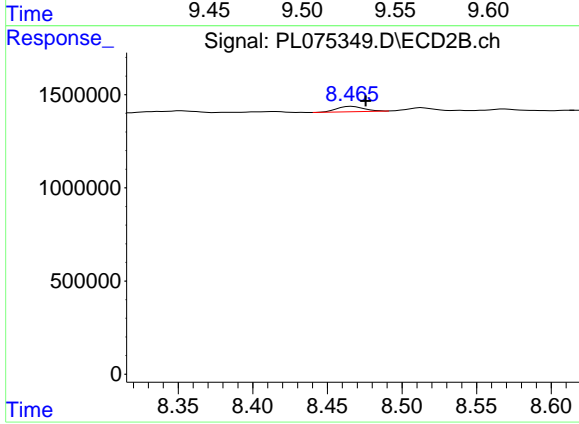
#16 4,4'-DDD

R.T.: 0.000 min
 Exp R.T. : 8.215 min
 Response: 0
 Conc: N.D.



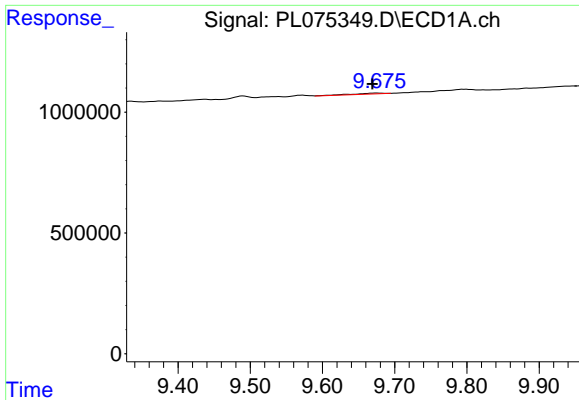
#17 4,4'-DDT

R.T.: 9.539 min
 Delta R.T.: 0.018 min
 Response: 68786
 Conc: 0.12 ng/ml



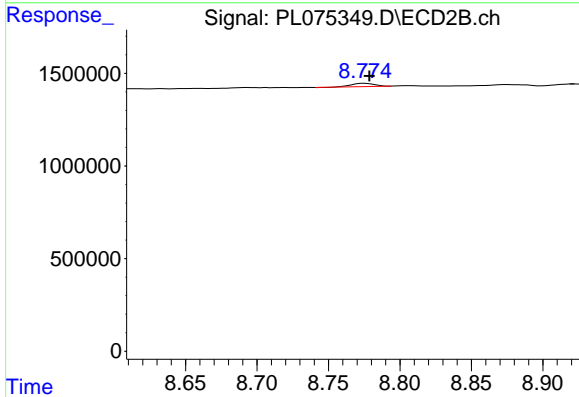
#17 4,4'-DDT

R.T.: 8.466 min
 Delta R.T.: -0.010 min
 Response: 358923
 Conc: 0.25 ng/ml

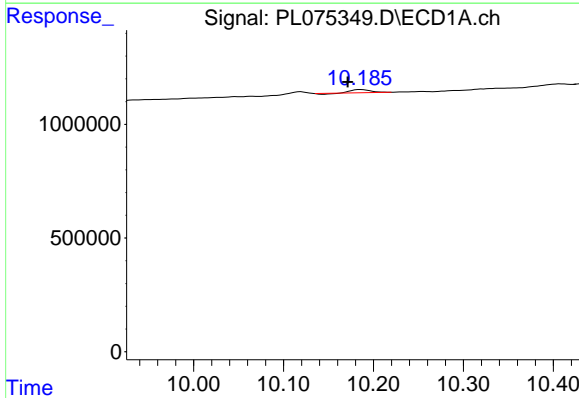


#19 Endosulfan Sulfate
 R.T.: 9.676 min
 Delta R.T.: 0.007 min
 Response: 102804
 Conc: 0.18 ng/ml

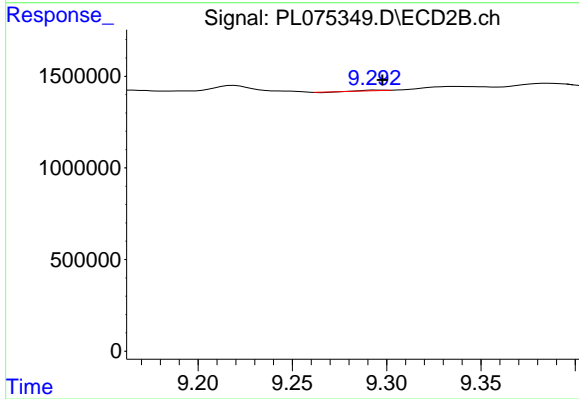
Instrument :
 ECD_L
 ClientSampleId :



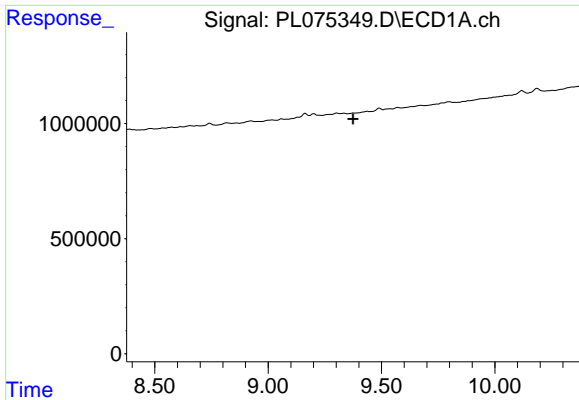
#19 Endosulfan Sulfate
 R.T.: 8.775 min
 Delta R.T.: -0.003 min
 Response: 200441
 Conc: 0.13 ng/ml



#21 Endrin ketone
 R.T.: 10.186 min
 Delta R.T.: 0.015 min
 Response: 184235
 Conc: 0.30 ng/ml



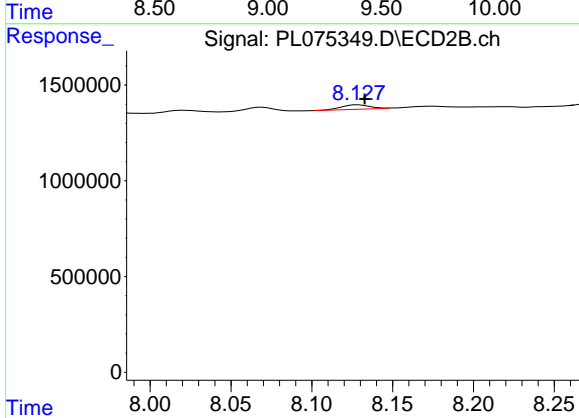
#21 Endrin ketone
 R.T.: 9.295 min
 Delta R.T.: -0.002 min
 Response: 1409
 Conc: 0.00 ng/ml



#27 Chlordane-5

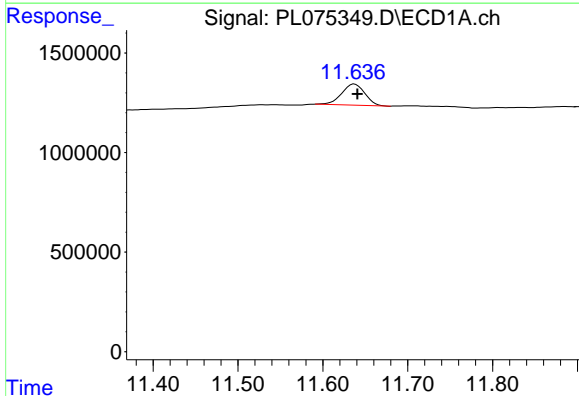
R.T.: 0.000 min
 Exp R.T.: 9.375 min
 Response: 0
 Conc: N.D.

Instrument :
 ECD_L
 ClientSampleId :



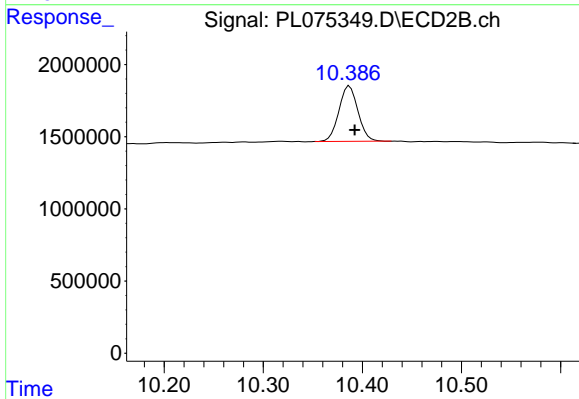
#27 Chlordane-5

R.T.: 8.129 min
 Delta R.T.: -0.004 min
 Response: 282772
 Conc: 5.67 ng/ml



#28 Decachlorobiphenyl

R.T.: 11.637 min
 Delta R.T.: -0.004 min
 Response: 2019043
 Conc: 3.77 ng/ml



#28 Decachlorobiphenyl

R.T.: 10.387 min
 Delta R.T.: -0.005 min
 Response: 5125736
 Conc: 3.74 ng/ml