

Data Path : Z:\pestpcbsrv\HPCHEM1\ECD_L\Data\PL060122\
 Data File : PL075353.D
 Signal(s) : Signal #1: ECD1A.ch Signal #2: ECD2B.ch
 Acq On : 01 Jun 2022 16:25
 Operator : AR\AJ
 Sample : N3107-03
 Misc :
 ALS Vial : 15 Sample Multiplier: 1

Instrument :
 ECD_L
 ClientSampleId :

Integration File signal 1: autoint1.e
 Integration File signal 2: autoint2.e
 Quant Time: Jun 02 09:18:41 2022
 Quant Method : Z:\pestpcbsrv\HPCHEM1\ECD_L\methods\PL052822.M
 Quant Title : GC Extractables
 QLast Update : Wed Jun 01 10:19:11 2022
 Response via : Initial Calibration
 Integrator: ChemStation

Volume Inj. : 1 µl
 Signal #1 Phase : ZB-MR2 Signal #2 Phase: ZB-MR1
 Signal #1 Info : 30M x 0.32mm x0.2 Signal #2 Info : 30M x 0.32mm x0.5µm

	Compound	RT#1	RT#2	Resp#1	Resp#2	ng/ml	ng/ml

System Monitoring Compounds							
1)	SA Tetrachlo...	5.643	4.642	6417524	17695486	10.919	11.170
28)	SA Decachlor...	11.639	10.387	6325478	16362431	11.797	11.924
Target Compounds							
5)	MB Aldrin	7.629f	6.490	519016	736187	0.712	0.381 #
7)	B delta-BHC	0.000	6.411	0	511750	N.D.	0.239 #
8)	B Heptachlo...	8.117	7.072	1480601	135595	2.169	0.074 #
10)	B gamma-Chl...	8.415f	7.330f	203768	1897872	0.302	1.032 #
11)	B alpha-Chl...	8.477	7.440f	273593	310422	0.404	0.170 #
12)	B 4,4'-DDE	8.660	7.627	1301460	3071285	2.237	1.886
13)	MA Dieldrin	8.813	7.765	274887	1869185	0.434	1.077 #
14)	MA Endrin	9.056	8.066f	447883	694752	0.843	0.446 #
16)	A 4,4'-DDD	9.203	0.000	685801	0	1.387	N.D. #
17)	MA 4,4'-DDT	9.519	8.466	485576	3159566	0.834	2.209 #
18)	B Endrin al...	0.000	8.572f	0	1070564	N.D.	0.888 #
19)	B Endosulfa...	0.000	8.775	0	978924	N.D.	0.654 #
21)	B Endrin ke...	10.186	9.327f	24735	1233956	0.040	0.772 #
23)	Chlordane-1	7.040	5.962	228760	562880	9.989	10.109
24)	Chlordane-2	7.629	6.649	519016	483152	18.225	7.072 #
25)	Chlordane-3	8.415f	7.330f	203768	1897872	2.190	10.752 #
26)	Chlordane-4	8.477	7.440f	273593	310422	2.411	1.643 #
27)	Chlordane-5	0.000	8.127	0	2522910	N.D.	50.558 #

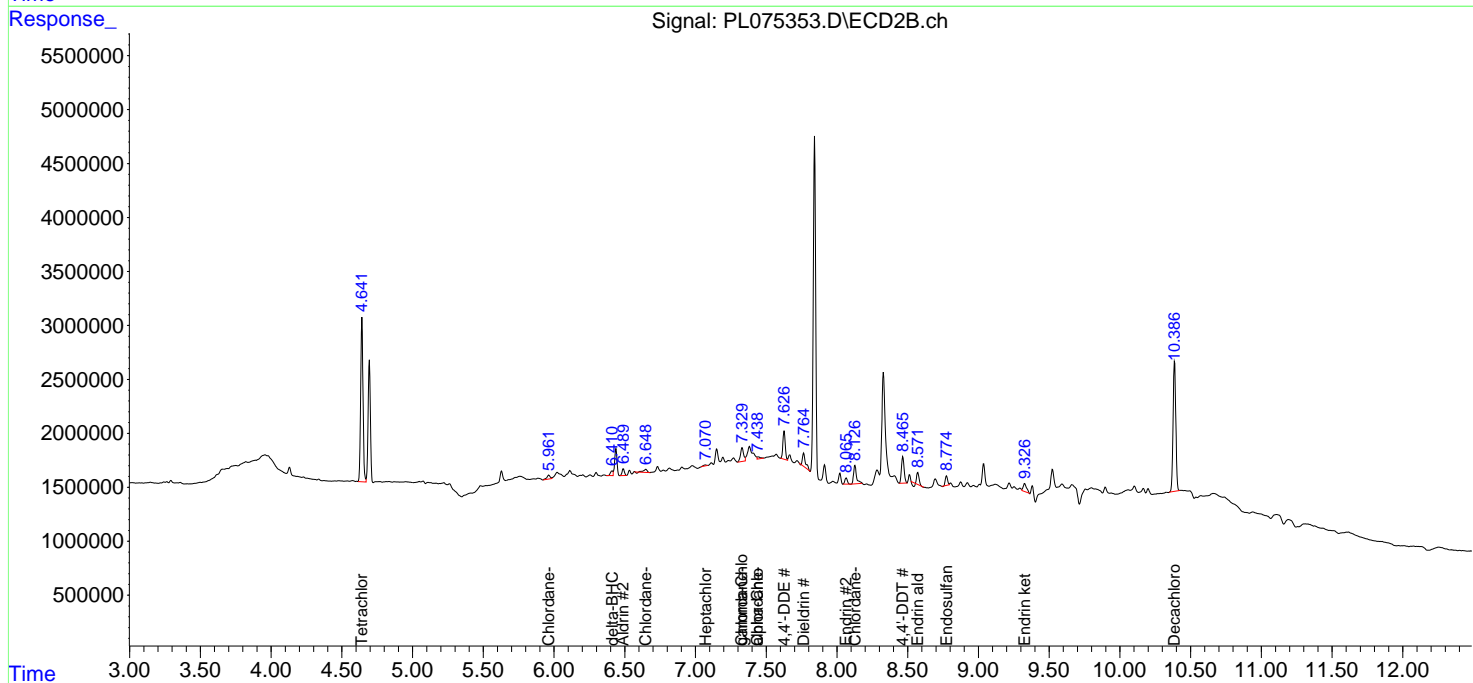
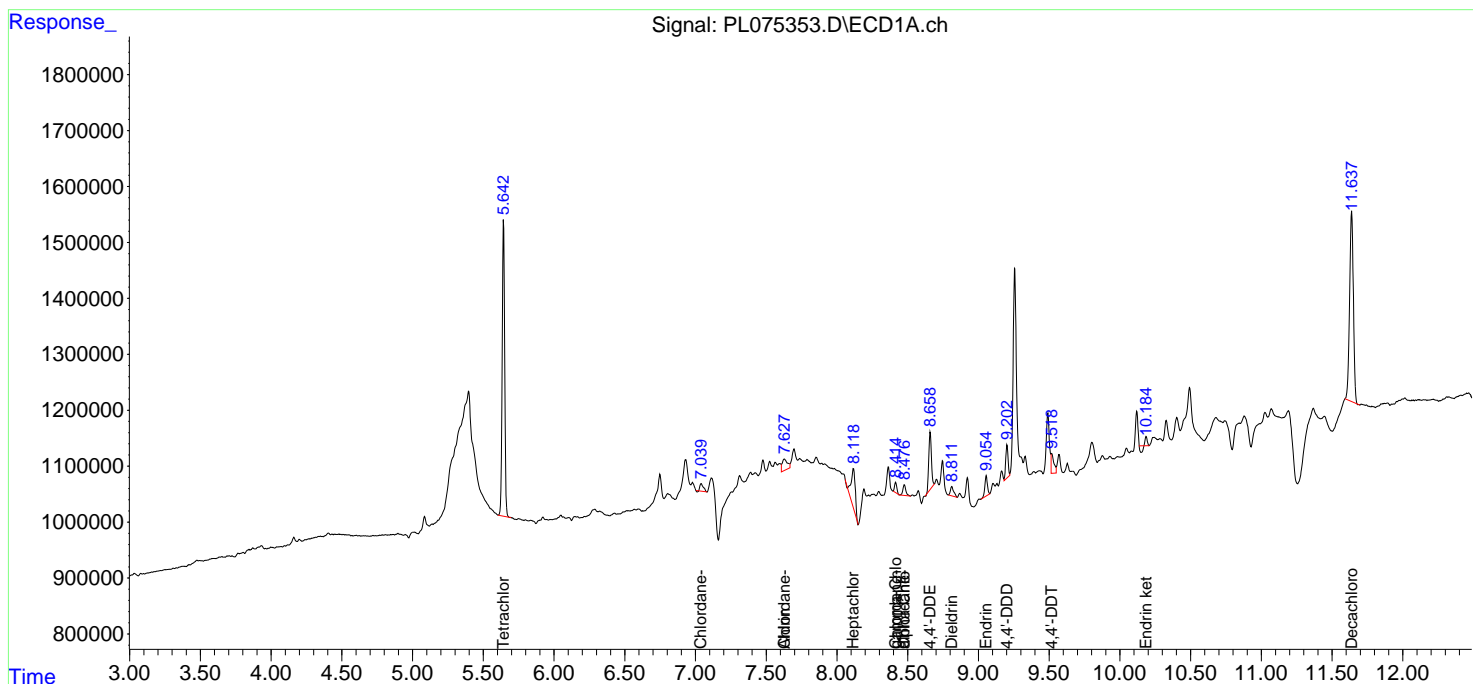
(f)=RT Delta > 1/2 Window (#)=Amounts differ by > 25% (m)=manual int.

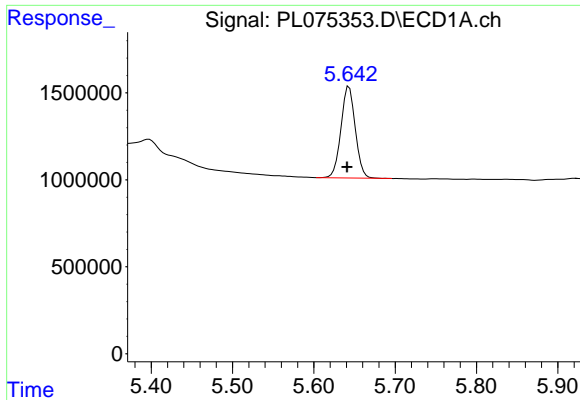
Data Path : Z:\pestpcbsrv\HPCHEM1\ECD_L\Data\PL060122\
 Data File : PL075353.D
 Signal(s) : Signal #1: ECD1A.ch Signal #2: ECD2B.ch
 Acq On : 01 Jun 2022 16:25
 Operator : AR\AJ
 Sample : N3107-03
 Misc :
 ALS Vial : 15 Sample Multiplier: 1

Instrument :
 ECD_L
 ClientSampleId :

Integration File signal 1: autoint1.e
 Integration File signal 2: autoint2.e
 Quant Time: Jun 02 09:18:41 2022
 Quant Method : Z:\pestpcbsrv\HPCHEM1\ECD_L\methods\PL052822.M
 Quant Title : GC Extractables
 QLast Update : Wed Jun 01 10:19:11 2022
 Response via : Initial Calibration
 Integrator: ChemStation

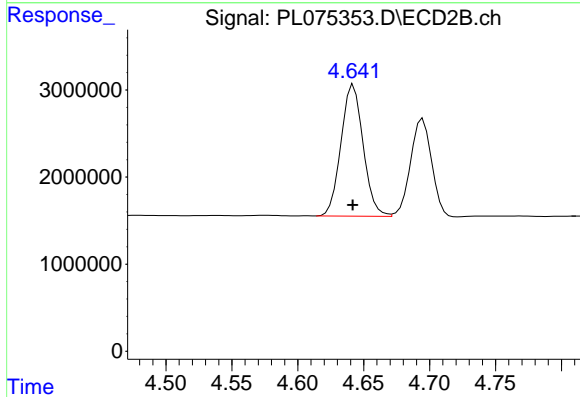
Volume Inj. : 1 µl
 Signal #1 Phase : ZB-MR2 Signal #2 Phase: ZB-MR1
 Signal #1 Info : 30M x 0.32mm x0.2 Signal #2 Info : 30M x 0.32mm x0.5µm



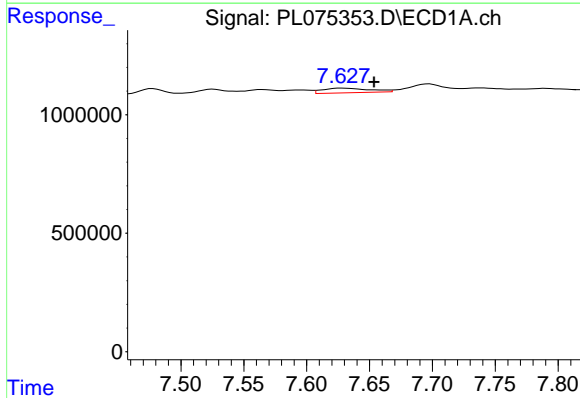


#1 Tetrachloro-m-xylene
 R.T.: 5.643 min
 Delta R.T.: 0.002 min
 Response: 6417524
 Conc: 10.92 ng/ml

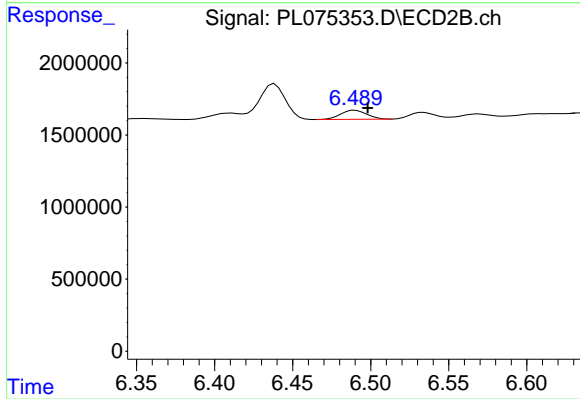
Instrument :
 ECD_L
 ClientSampleId :



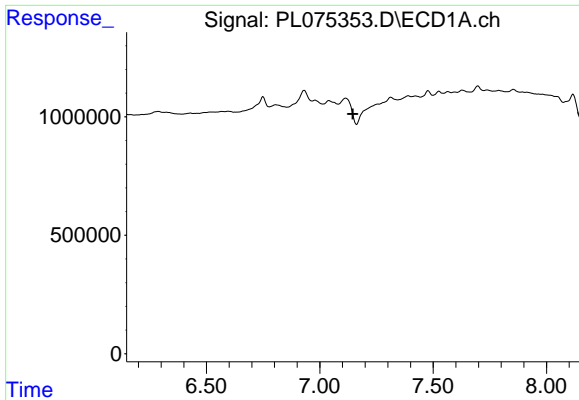
#1 Tetrachloro-m-xylene
 R.T.: 4.642 min
 Delta R.T.: 0.000 min
 Response: 17695486
 Conc: 11.17 ng/ml



#5 Aldrin
 R.T.: 7.629 min
 Delta R.T.: -0.025 min
 Response: 519016
 Conc: 0.71 ng/ml



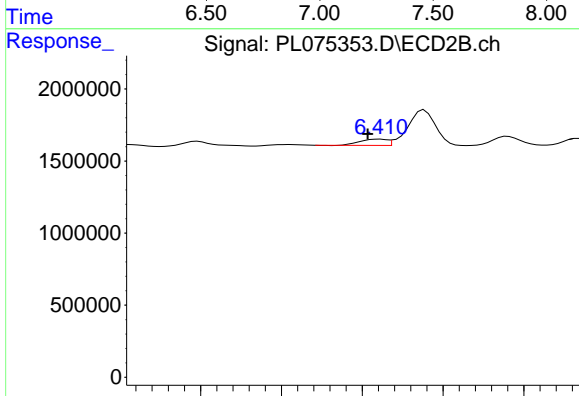
#5 Aldrin
 R.T.: 6.490 min
 Delta R.T.: -0.008 min
 Response: 736187
 Conc: 0.38 ng/ml



#7 delta-BHC

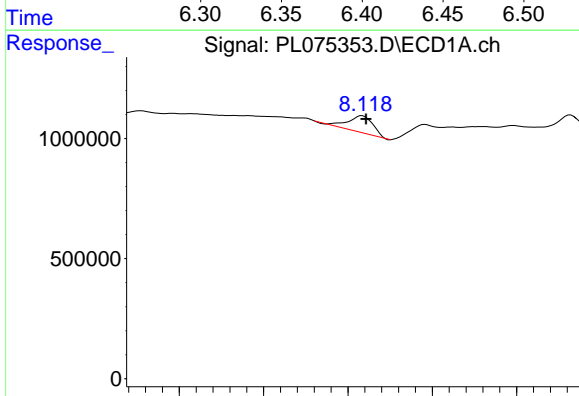
R.T.: 0.000 min
 Exp R.T.: 7.146 min
 Response: 0
 Conc: N.D.

Instrument :
 ECD_L
 ClientSampleId :



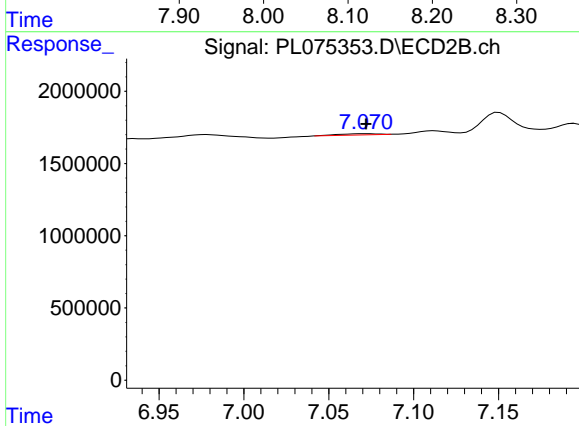
#7 delta-BHC

R.T.: 6.411 min
 Delta R.T.: 0.008 min
 Response: 511750
 Conc: 0.24 ng/ml



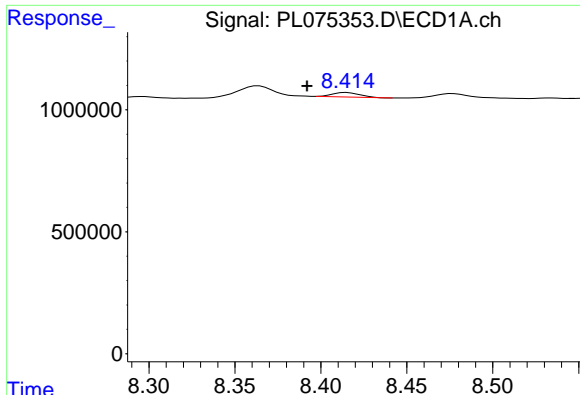
#8 Heptachlor epoxide

R.T.: 8.117 min
 Delta R.T.: -0.005 min
 Response: 1480601
 Conc: 2.17 ng/ml



#8 Heptachlor epoxide

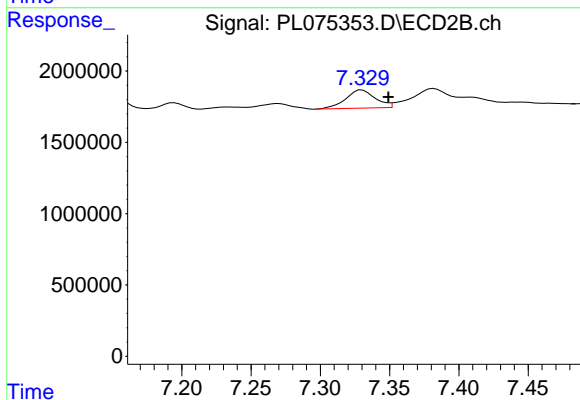
R.T.: 7.072 min
 Delta R.T.: 0.000 min
 Response: 135595
 Conc: 0.07 ng/ml



#10 gamma-Chlordane

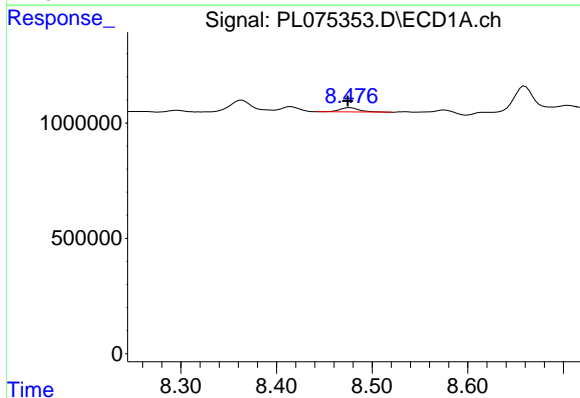
R.T.: 8.415 min
 Delta R.T.: 0.023 min
 Response: 203768
 Conc: 0.30 ng/ml

Instrument :
 ECD_L
 ClientSampleId :



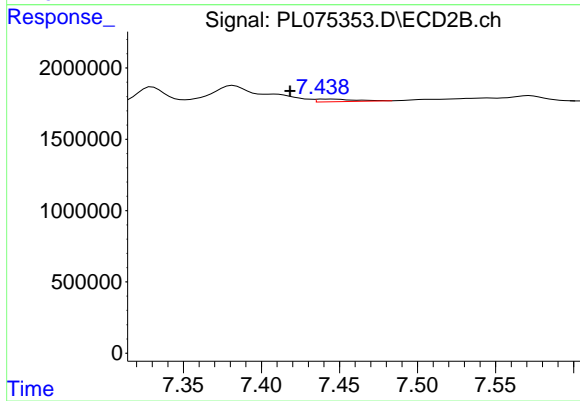
#10 gamma-Chlordane

R.T.: 7.330 min
 Delta R.T.: -0.019 min
 Response: 1897872
 Conc: 1.03 ng/ml



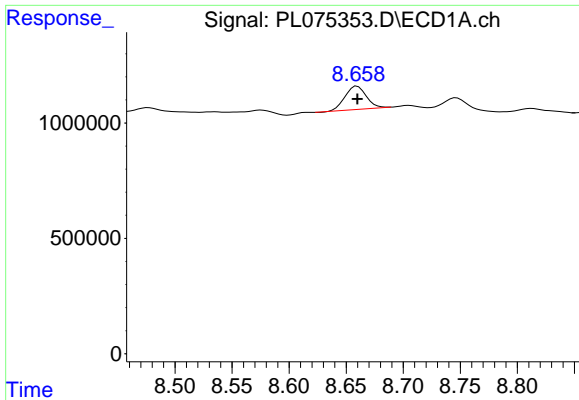
#11 alpha-Chlordane

R.T.: 8.477 min
 Delta R.T.: 0.002 min
 Response: 273593
 Conc: 0.40 ng/ml



#11 alpha-Chlordane

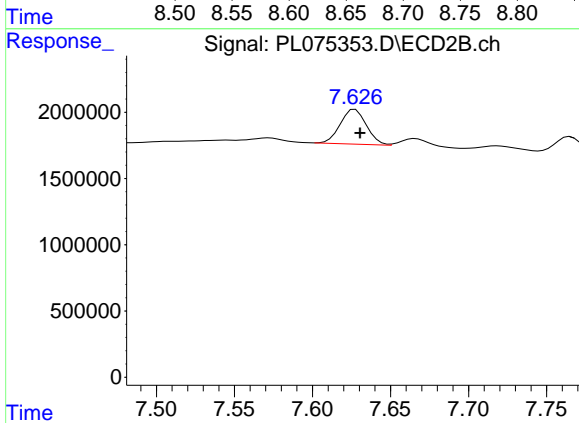
R.T.: 7.440 min
 Delta R.T.: 0.022 min
 Response: 310422
 Conc: 0.17 ng/ml



#12 4,4'-DDE

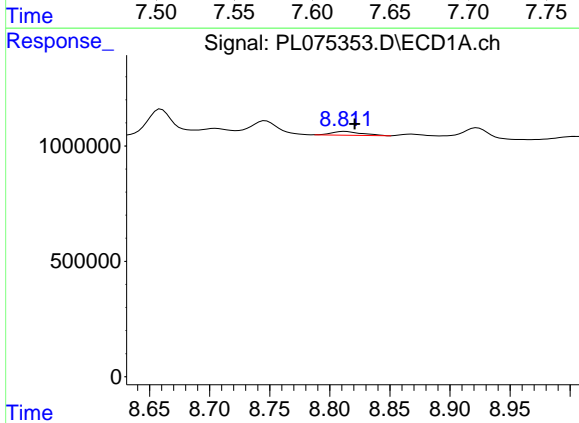
R.T.: 8.660 min
 Delta R.T.: 0.000 min
 Response: 1301460
 Conc: 2.24 ng/ml

Instrument :
 ECD_L
 ClientSampleId :



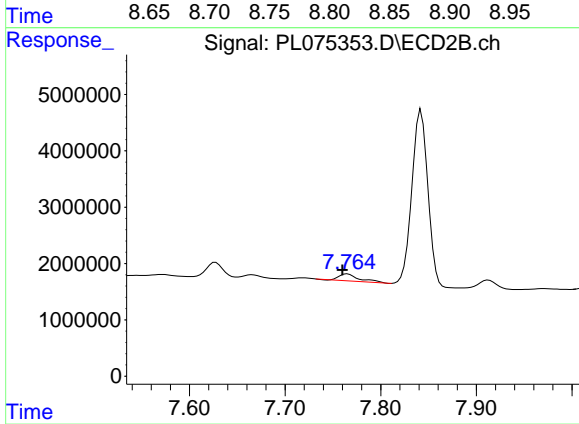
#12 4,4'-DDE

R.T.: 7.627 min
 Delta R.T.: -0.003 min
 Response: 3071285
 Conc: 1.89 ng/ml



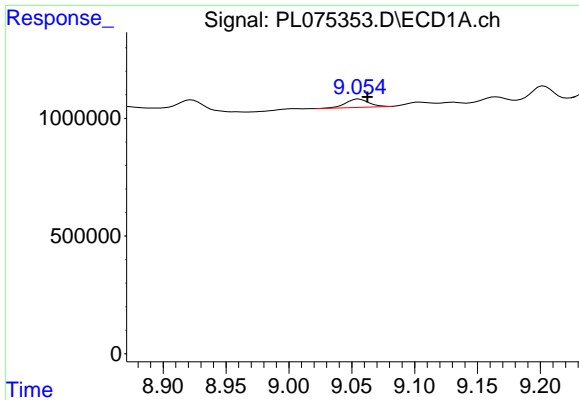
#13 Dieldrin

R.T.: 8.813 min
 Delta R.T.: -0.008 min
 Response: 274887
 Conc: 0.43 ng/ml



#13 Dieldrin

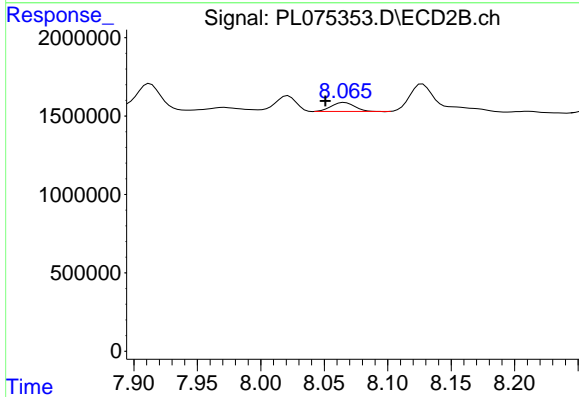
R.T.: 7.765 min
 Delta R.T.: 0.005 min
 Response: 1869185
 Conc: 1.08 ng/ml



#14 Endrin

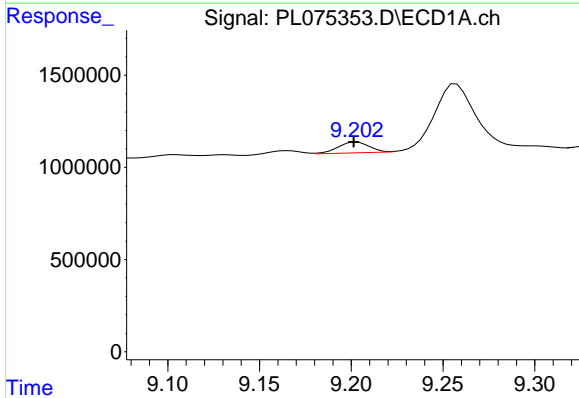
R.T.: 9.056 min
 Delta R.T.: -0.007 min
 Response: 447883
 Conc: 0.84 ng/ml

Instrument :
 ECD_L
 ClientSampleId :



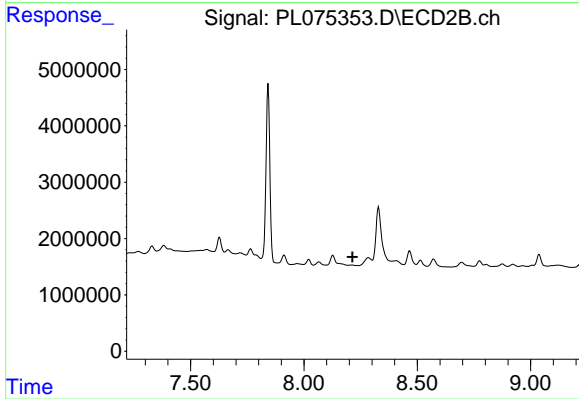
#14 Endrin

R.T.: 8.066 min
 Delta R.T.: 0.015 min
 Response: 694752
 Conc: 0.45 ng/ml



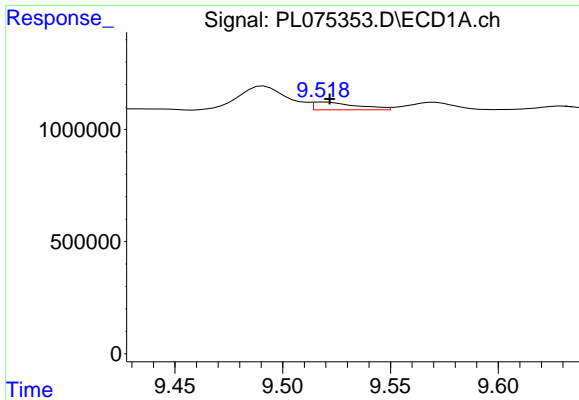
#16 4,4'-DDD

R.T.: 9.203 min
 Delta R.T.: 0.002 min
 Response: 685801
 Conc: 1.39 ng/ml



#16 4,4'-DDD

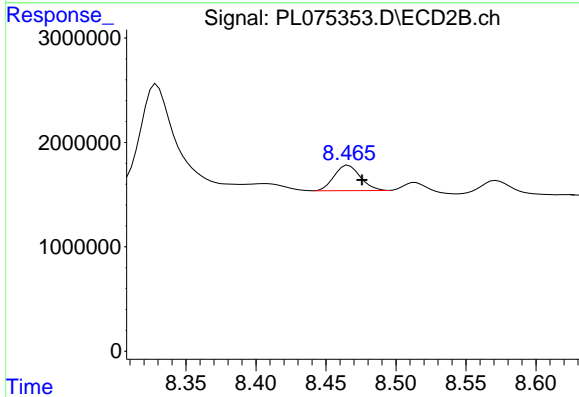
R.T.: 0.000 min
 Exp R.T. : 8.215 min
 Response: 0
 Conc: N.D.



#17 4,4'-DDT

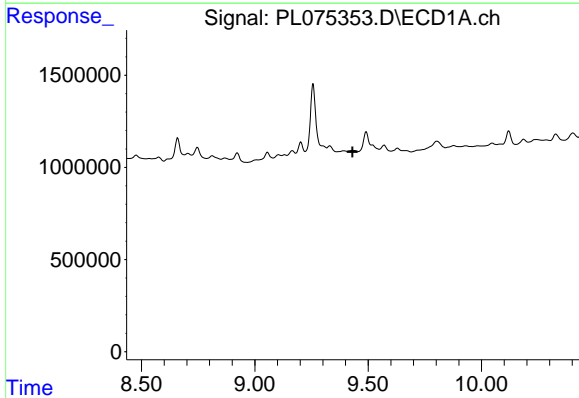
R.T.: 9.519 min
 Delta R.T.: -0.003 min
 Response: 485576
 Conc: 0.83 ng/ml

Instrument :
 ECD_L
 ClientSampleId :



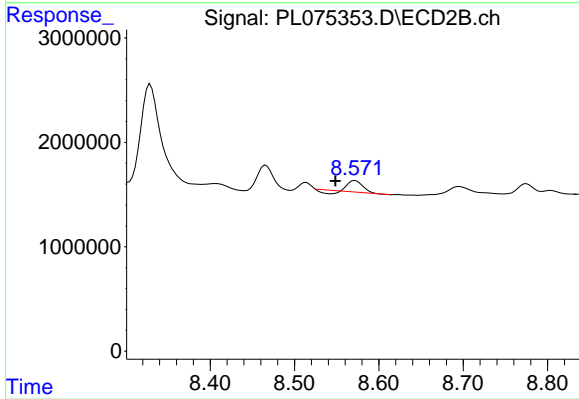
#17 4,4'-DDT

R.T.: 8.466 min
 Delta R.T.: -0.010 min
 Response: 3159566
 Conc: 2.21 ng/ml



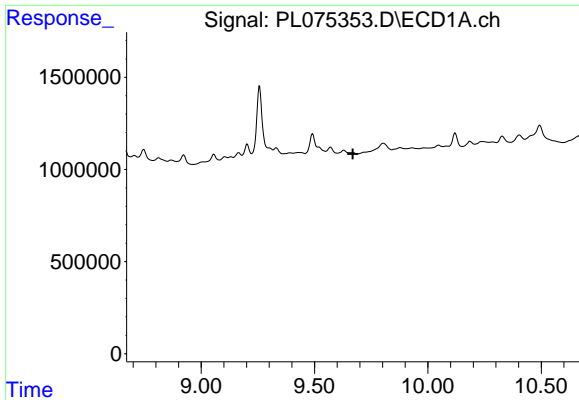
#18 Endrin aldehyde

R.T.: 0.000 min
 Exp R.T. : 9.431 min
 Response: 0
 Conc: N.D.



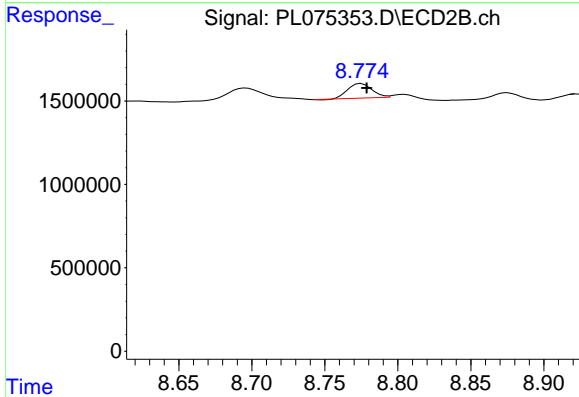
#18 Endrin aldehyde

R.T.: 8.572 min
 Delta R.T.: 0.023 min
 Response: 1070564
 Conc: 0.89 ng/ml

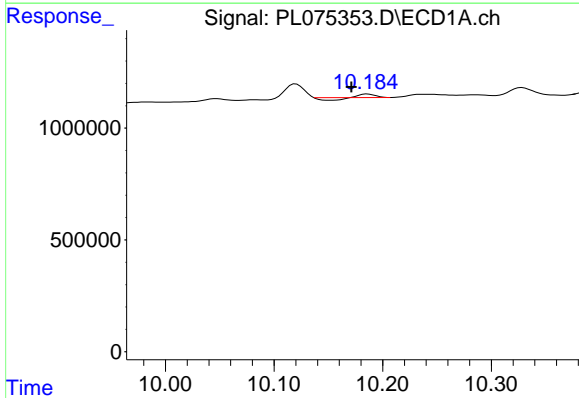


#19 Endosulfan Sulfate
 R.T.: 0.000 min
 Exp R.T.: 9.669 min
 Response: 0
 Conc: N.D.

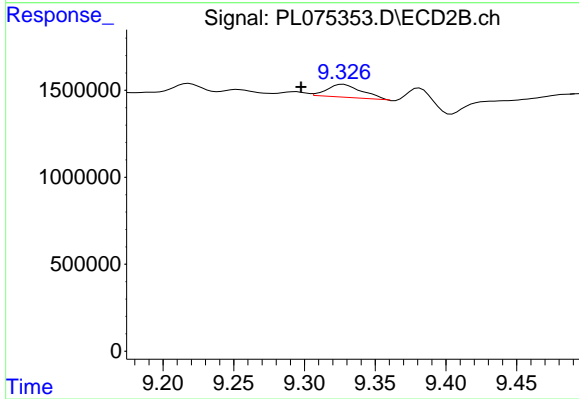
Instrument :
 ECD_L
 ClientSampleId :



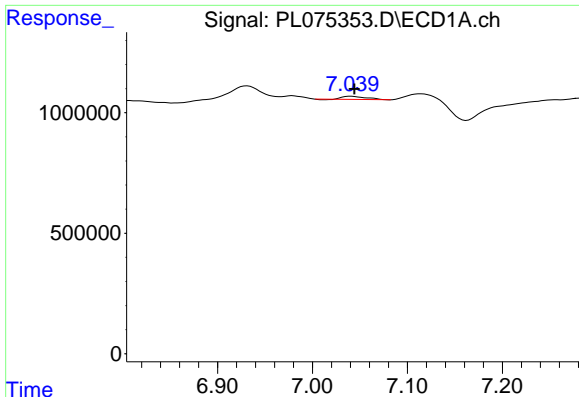
#19 Endosulfan Sulfate
 R.T.: 8.775 min
 Delta R.T.: -0.004 min
 Response: 978924
 Conc: 0.65 ng/ml



#21 Endrin ketone
 R.T.: 10.186 min
 Delta R.T.: 0.015 min
 Response: 24735
 Conc: 0.04 ng/ml



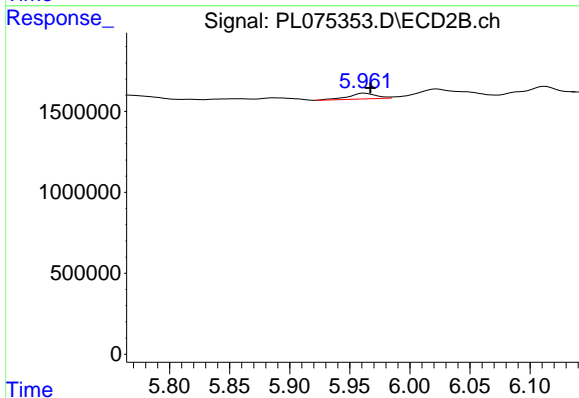
#21 Endrin ketone
 R.T.: 9.327 min
 Delta R.T.: 0.030 min
 Response: 1233956
 Conc: 0.77 ng/ml



#23 Chlordane-1

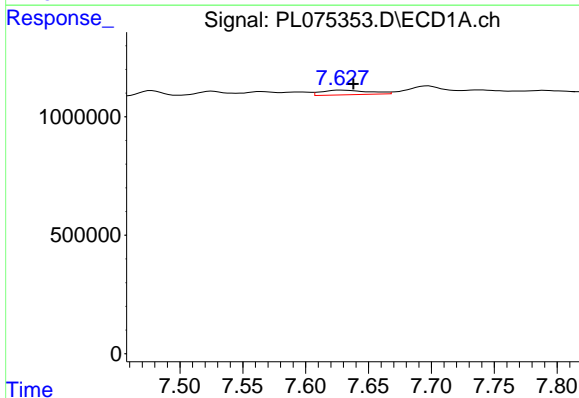
R.T.: 7.040 min
 Delta R.T.: -0.004 min
 Response: 228760
 Conc: 9.99 ng/ml

Instrument :
 ECD_L
 ClientSampleId :



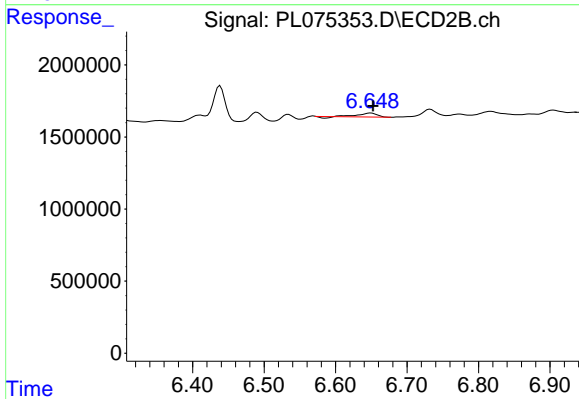
#23 Chlordane-1

R.T.: 5.962 min
 Delta R.T.: -0.005 min
 Response: 562880
 Conc: 10.11 ng/ml



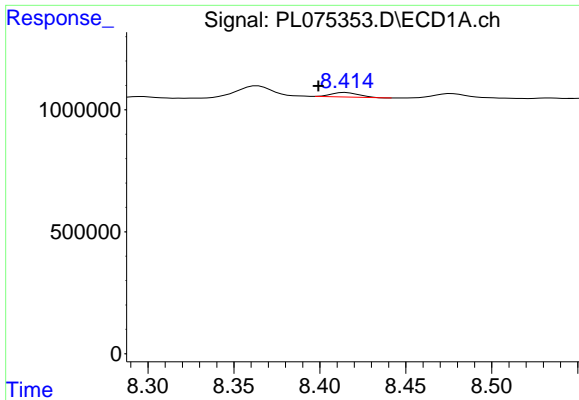
#24 Chlordane-2

R.T.: 7.629 min
 Delta R.T.: -0.009 min
 Response: 519016
 Conc: 18.22 ng/ml



#24 Chlordane-2

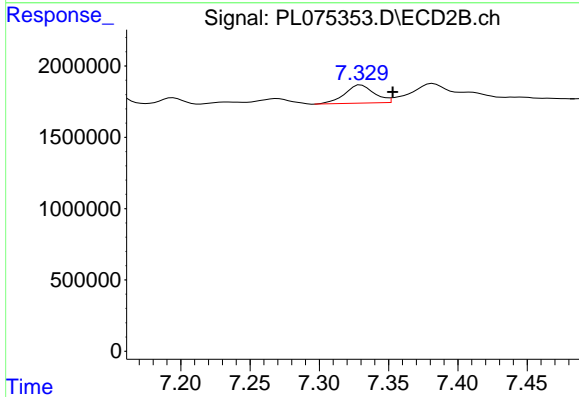
R.T.: 6.649 min
 Delta R.T.: -0.003 min
 Response: 483152
 Conc: 7.07 ng/ml



#25 Chlordane-3

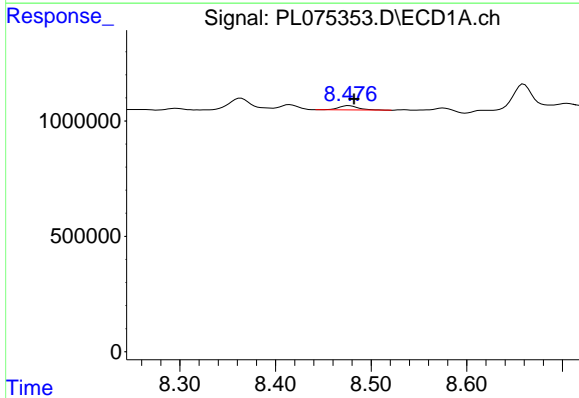
R.T.: 8.415 min
 Delta R.T.: 0.016 min
 Response: 203768
 Conc: 2.19 ng/ml

Instrument :
 ECD_L
 ClientSampleId :



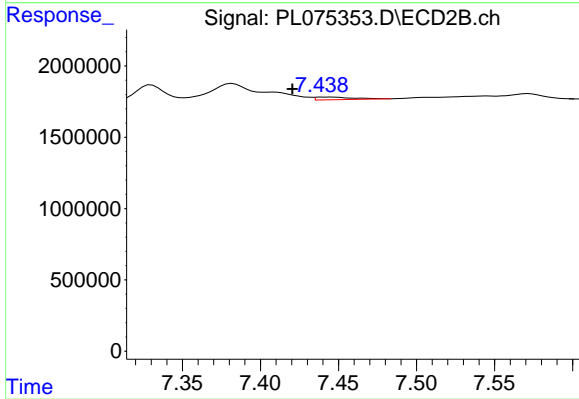
#25 Chlordane-3

R.T.: 7.330 min
 Delta R.T.: -0.023 min
 Response: 1897872
 Conc: 10.75 ng/ml



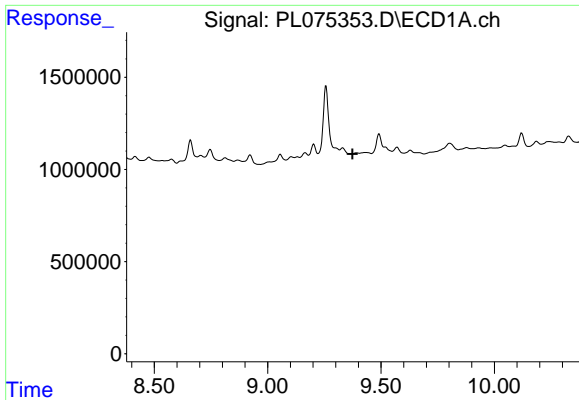
#26 Chlordane-4

R.T.: 8.477 min
 Delta R.T.: -0.005 min
 Response: 273593
 Conc: 2.41 ng/ml



#26 Chlordane-4

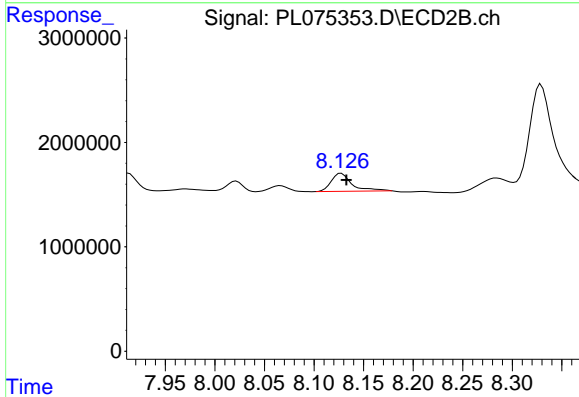
R.T.: 7.440 min
 Delta R.T.: 0.020 min
 Response: 310422
 Conc: 1.64 ng/ml



#27 Chlordane-5

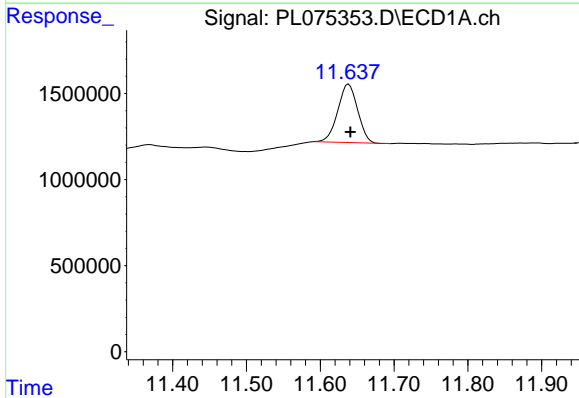
R.T.: 0.000 min
 Exp R.T.: 9.375 min
 Response: 0
 Conc: N.D.

Instrument :
 ECD_L
 ClientSampleId :



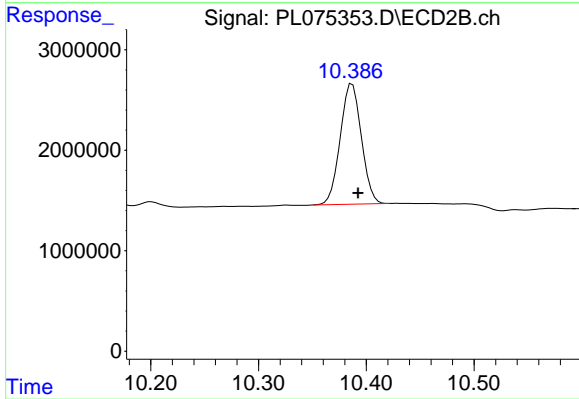
#27 Chlordane-5

R.T.: 8.127 min
 Delta R.T.: -0.005 min
 Response: 2522910
 Conc: 50.56 ng/ml



#28 Decachlorobiphenyl

R.T.: 11.639 min
 Delta R.T.: -0.002 min
 Response: 6325478
 Conc: 11.80 ng/ml



#28 Decachlorobiphenyl

R.T.: 10.387 min
 Delta R.T.: -0.005 min
 Response: 16362431
 Conc: 11.92 ng/ml