

Data Path : Z:\pestpcbsrv\HPCHEM1\ECD_L\Data\PL060222\
 Data File : PL075398.D
 Signal(s) : Signal #1: ECD1A.ch Signal #2: ECD2B.ch
 Acq On : 02 Jun 2022 18:12
 Operator : AR\AJ
 Sample : PB145179BL
 Misc :
 ALS Vial : 29 Sample Multiplier: 1

Integration File signal 1: autoint1.e
 Integration File signal 2: autoint2.e
 Quant Time: Jun 03 06:06:56 2022
 Quant Method : Z:\pestpcbsrv\HPCHEM1\ECD_L\methods\PL052822.M
 Quant Title : GC Extractables
 QLast Update : Wed Jun 01 10:19:11 2022
 Response via : Initial Calibration
 Integrator: ChemStation

Volume Inj. : 1 µl
 Signal #1 Phase : ZB-MR2 Signal #2 Phase: ZB-MR1
 Signal #1 Info : 30M x 0.32mm x0.2 Signal #2 Info : 30M x 0.32mm x0.5µm

Compound	RT#1	RT#2	Resp#1	Resp#2	ng/ml	ng/ml

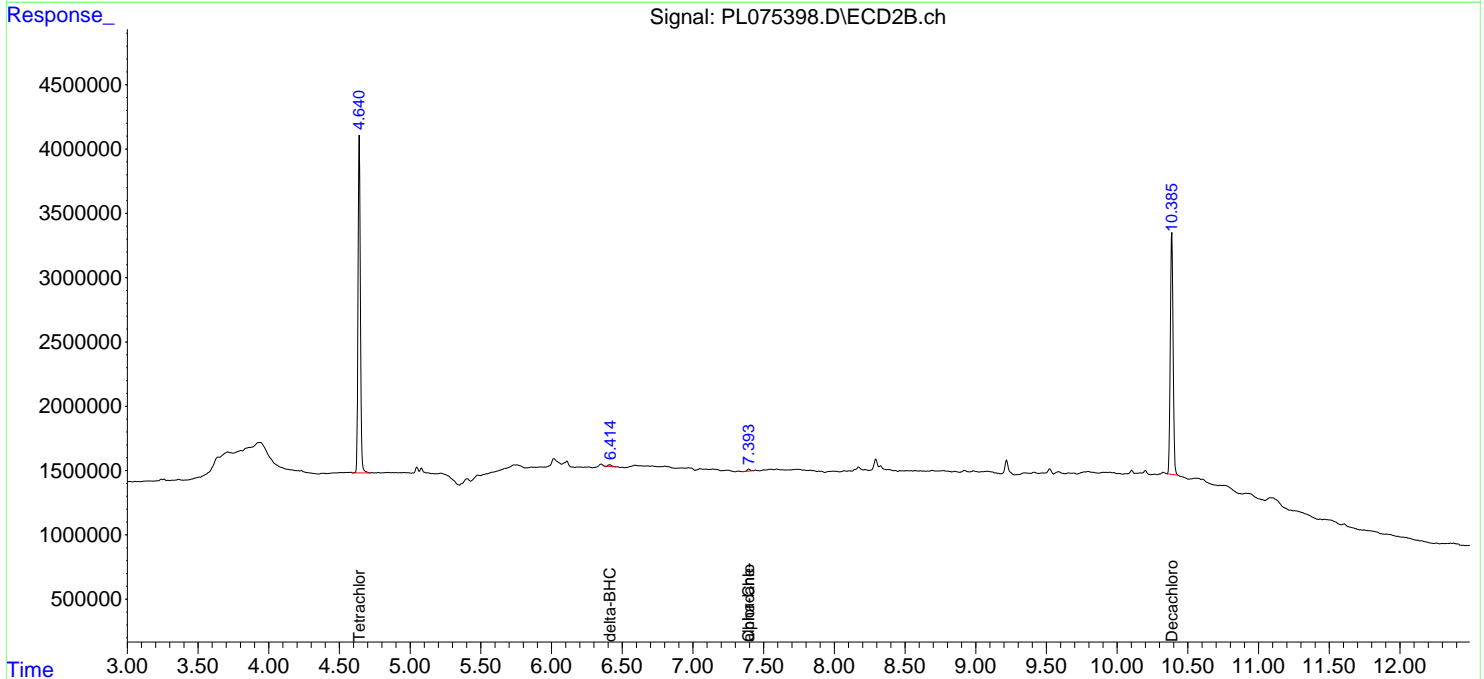
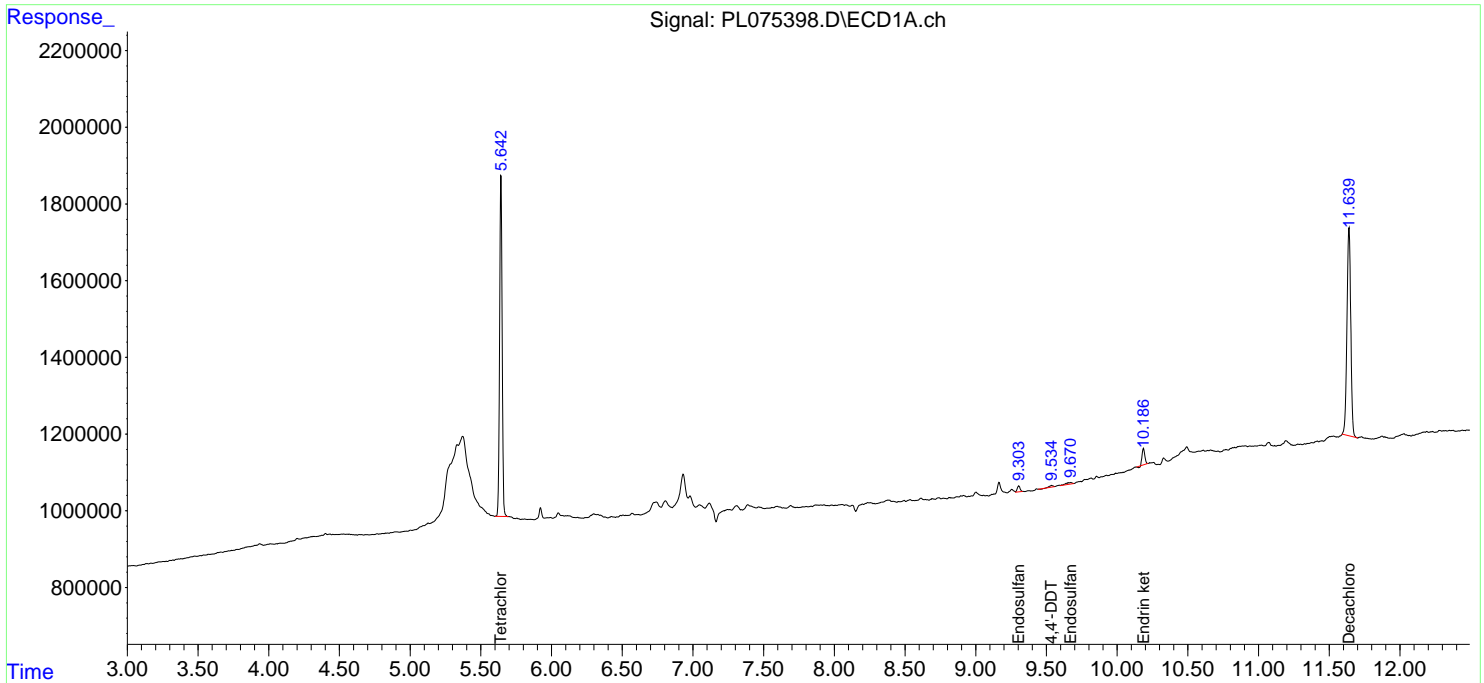
System Monitoring Compounds						
1) SA Tetrachlo...	5.643	4.641	10984552	30246558	18.690	19.093
28) SA Decachlor...	11.640	10.387	10191479	25464078	19.007	18.556
Target Compounds						
7) B delta-BHC	0.000	6.416	0	208165	N.D.	0.097 #
11) B alpha-Chl...	0.000	7.395f	0	215095	N.D.	0.118 #
15) B Endosulfa...	9.304	0.000	227498	0	0.403	N.D. #
17) MA 4,4'-DDT	9.536	0.000	68859	0	0.118	N.D. #
19) B Endosulfa...	9.673	0.000	134131	0	0.241	N.D. #
21) B Endrin ke...	10.187f	0.000	543570	0	0.885	N.D. #
26) Chlordane-4	0.000	7.395f	0	215095	N.D.	1.139 #

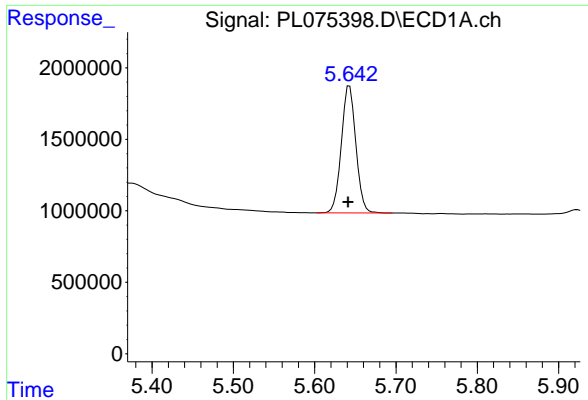
(f)=RT Delta > 1/2 Window (#)=Amounts differ by > 25% (m)=manual int.

Data Path : Z:\pestpcbsrv\HPCHEM1\ECD_L\Data\PL060222\
 Data File : PL075398.D
 Signal(s) : Signal #1: ECD1A.ch Signal #2: ECD2B.ch
 Acq On : 02 Jun 2022 18:12
 Operator : AR\AJ
 Sample : PB145179BL
 Misc :
 ALS Vial : 29 Sample Multiplier: 1

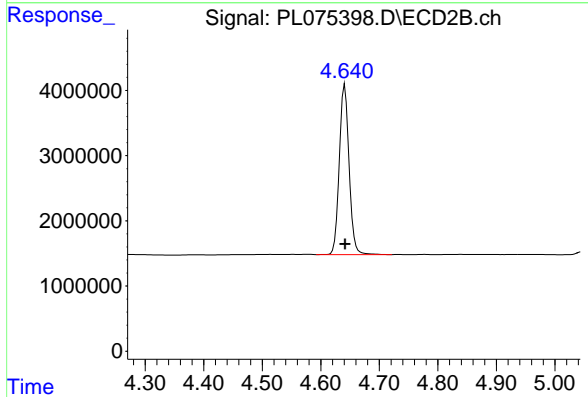
Integration File signal 1: autoint1.e
 Integration File signal 2: autoint2.e
 Quant Time: Jun 03 06:06:56 2022
 Quant Method : Z:\pestpcbsrv\HPCHEM1\ECD_L\methods\PL052822.M
 Quant Title : GC Extractables
 QLast Update : Wed Jun 01 10:19:11 2022
 Response via : Initial Calibration
 Integrator: ChemStation

Volume Inj. : 1 µl
 Signal #1 Phase : ZB-MR2 Signal #2 Phase: ZB-MR1
 Signal #1 Info : 30M x 0.32mm x0.2 Signal #2 Info : 30M x 0.32mm x0.5µm

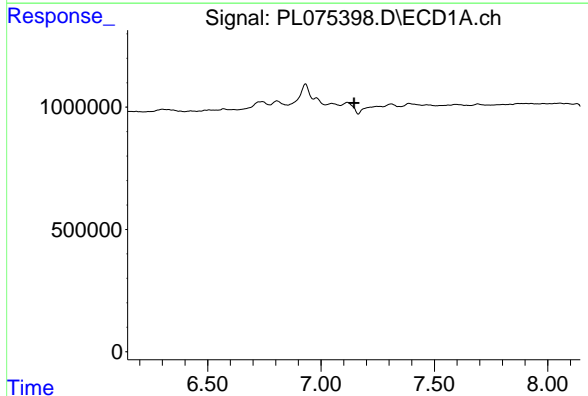




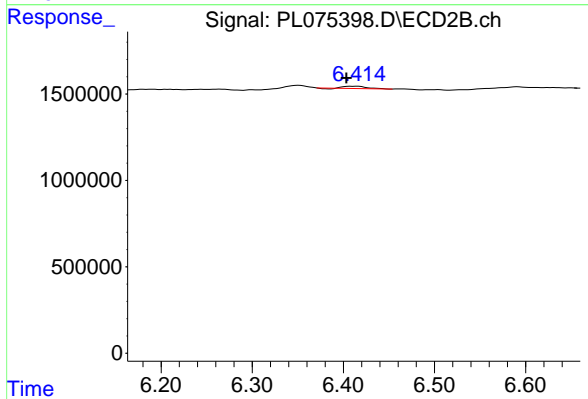
#1 Tetrachloro-m-xylene
 R.T.: 5.643 min
 Delta R.T.: 0.002 min
 Response: 10984552
 Conc: 18.69 ng/ml



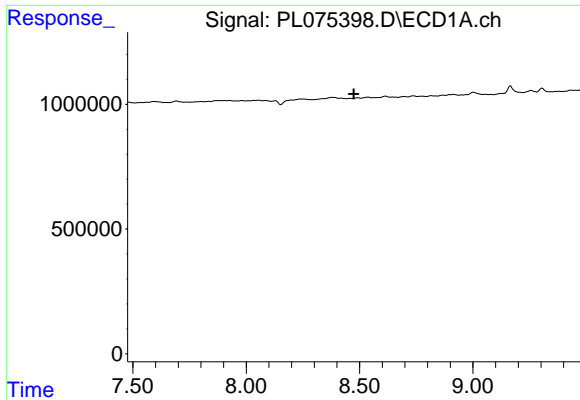
#1 Tetrachloro-m-xylene
 R.T.: 4.641 min
 Delta R.T.: 0.000 min
 Response: 30246558
 Conc: 19.09 ng/ml



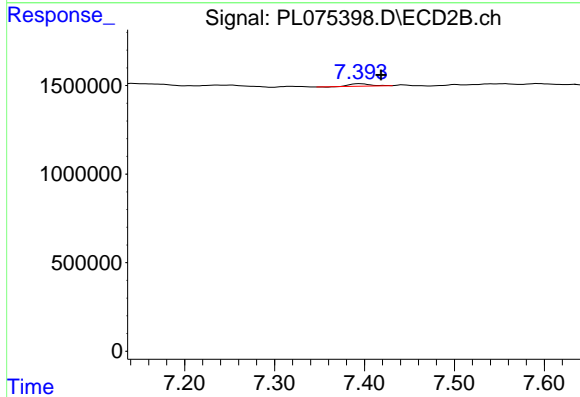
#7 delta-BHC
 R.T.: 0.000 min
 Exp R.T. : 7.146 min
 Response: 0
 Conc: N.D.



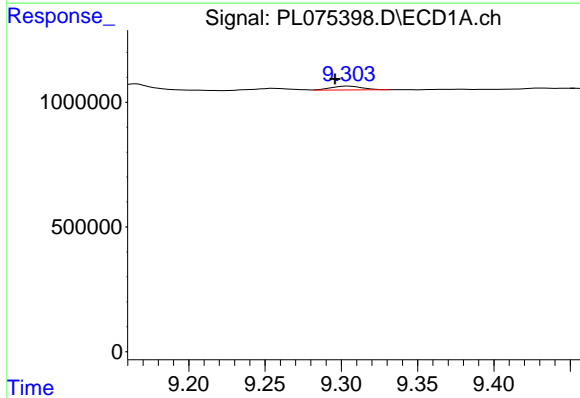
#7 delta-BHC
 R.T.: 6.416 min
 Delta R.T.: 0.012 min
 Response: 208165
 Conc: 0.10 ng/ml



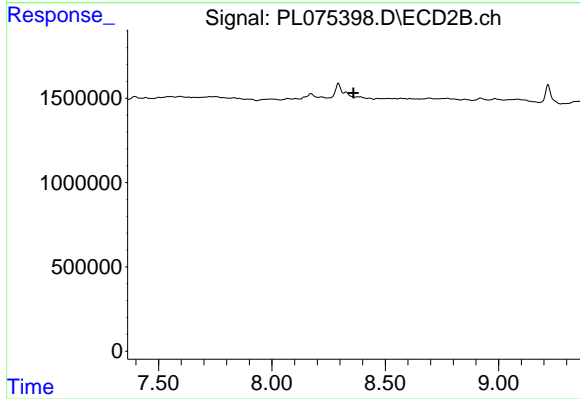
#11 alpha-Chlordane
 R.T.: 0.000 min
 Exp R.T. : 8.474 min
 Response: 0
 Conc: N.D.



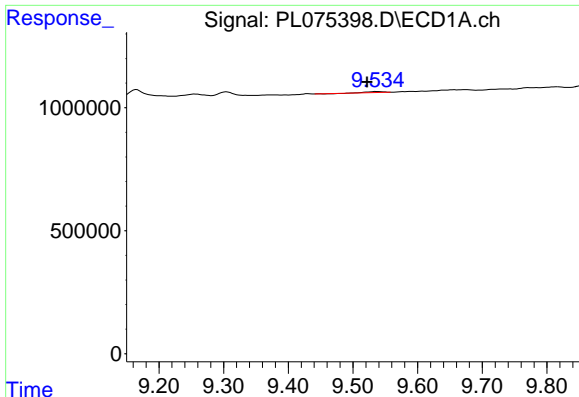
#11 alpha-Chlordane
 R.T.: 7.395 min
 Delta R.T.: -0.024 min
 Response: 215095
 Conc: 0.12 ng/ml



#15 Endosulfan II
 R.T.: 9.304 min
 Delta R.T.: 0.008 min
 Response: 227498
 Conc: 0.40 ng/ml

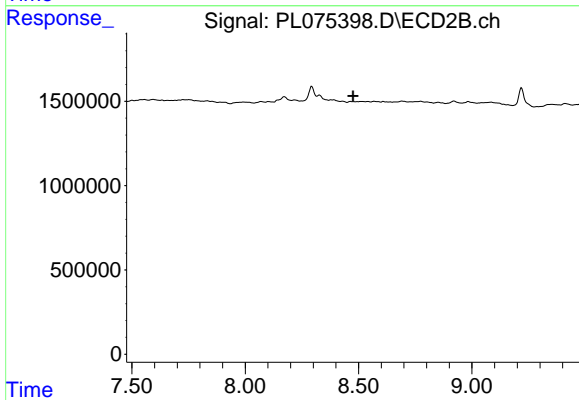


#15 Endosulfan II
 R.T.: 0.000 min
 Exp R.T. : 8.361 min
 Response: 0
 Conc: N.D.



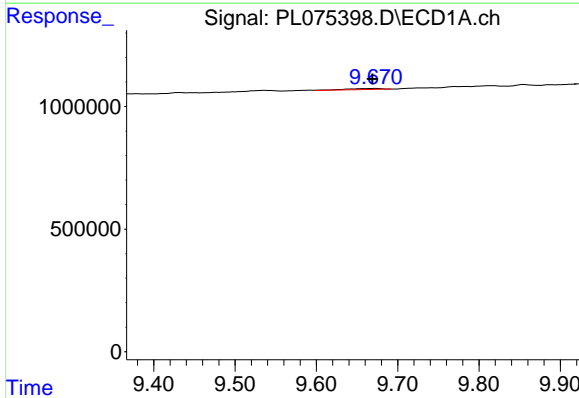
#17 4,4'-DDT

R.T.: 9.536 min
Delta R.T.: 0.014 min
Response: 68859
Conc: 0.12 ng/ml



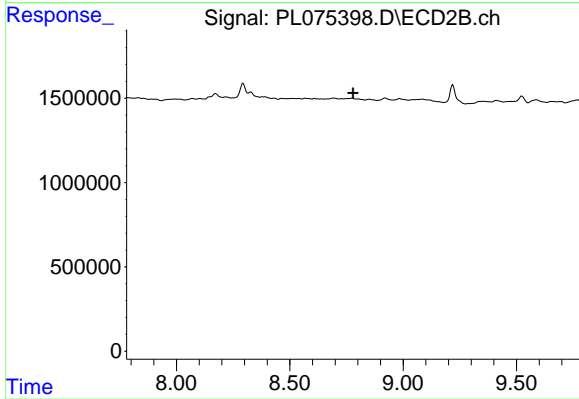
#17 4,4'-DDT

R.T.: 0.000 min
Exp R.T. : 8.476 min
Response: 0
Conc: N.D.



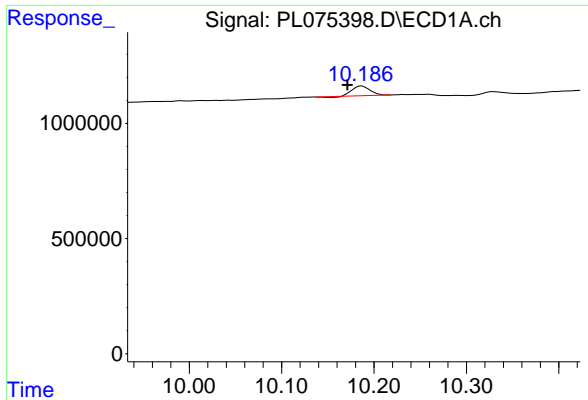
#19 Endosulfan Sulfate

R.T.: 9.673 min
Delta R.T.: 0.003 min
Response: 134131
Conc: 0.24 ng/ml

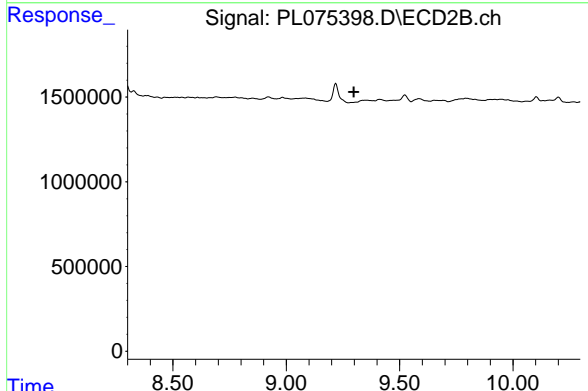


#19 Endosulfan Sulfate

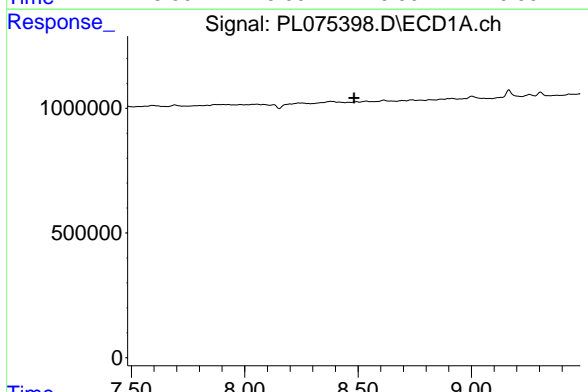
R.T.: 0.000 min
Exp R.T. : 8.779 min
Response: 0
Conc: N.D.



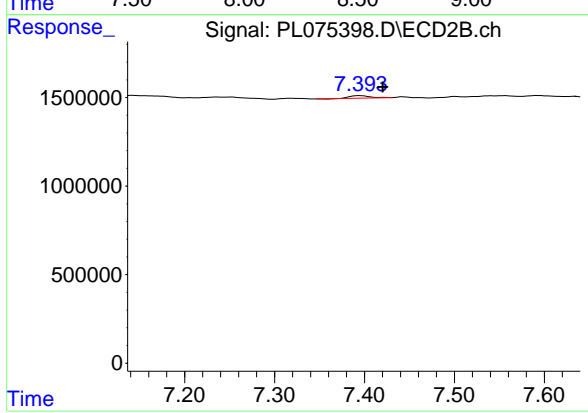
#21 Endrin ketone
 R.T.: 10.187 min
 Delta R.T.: 0.016 min
 Response: 543570
 Conc: 0.89 ng/ml



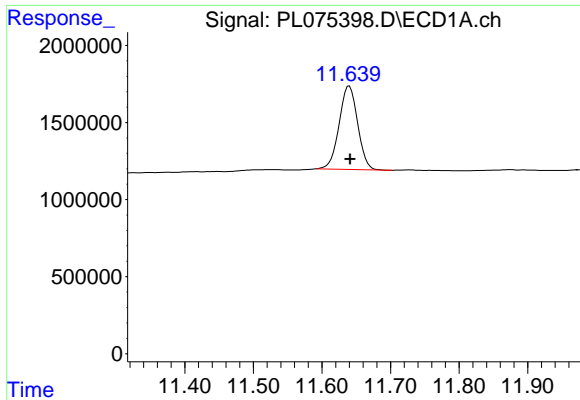
#21 Endrin ketone
 R.T.: 0.000 min
 Exp R.T. : 9.298 min
 Response: 0
 Conc: N.D.



#26 Chlordane-4
 R.T.: 0.000 min
 Exp R.T. : 8.482 min
 Response: 0
 Conc: N.D.

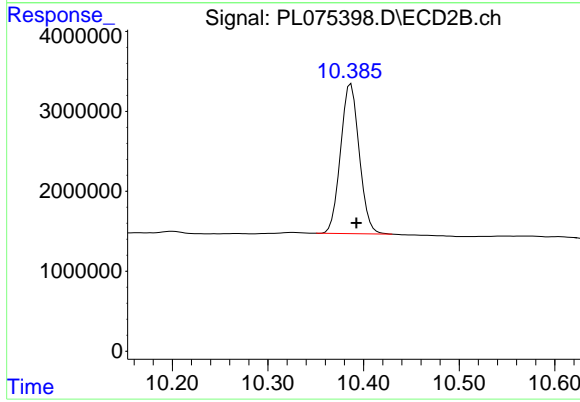


#26 Chlordane-4
 R.T.: 7.395 min
 Delta R.T.: -0.026 min
 Response: 215095
 Conc: 1.14 ng/ml



#28 Decachlorobiphenyl

R.T.: 11.640 min
Delta R.T.: -0.001 min
Response: 10191479
Conc: 19.01 ng/ml



#28 Decachlorobiphenyl

R.T.: 10.387 min
Delta R.T.: -0.006 min
Response: 25464078
Conc: 18.56 ng/ml